



October 12, 2018

Materials Licensing Branch
United States Nuclear Regulatory Commission, Region III
2443 Warrenville Road, Suite 210
Lisle, IL 60532-4352

Eli Lilly and Company

Lilly Corporate Center
Indianapolis, Indiana 46285
U.S.A.
+1.317.276.2000
www.lilly.com

RADIOACTIVE MATERIALS LICENSE NUMBER: 13-01133-02

RE: Request to remove location of use

Eli Lilly and Company (Lilly) recently announced that its animal health division, Elanco Animal Health (Elanco), is separating under an IPO from Lilly. As this separation has been staged over the next several months to assure a comprehensive and compliant transition, Lilly plans to submit amendments to remove locations associated with the Elanco business functions as each phase is completed.

In this regard, Lilly is submitting this amendment to remove Elanco World Headquarters (Line item 10D) as a location of use from its license. At this time, there is no known plan for Elanco to resume licensed activities at this site, and all appropriate surveys have been conducted to deem the site releasable for unrestricted use in accordance with NRC regulations and license conditions.

Sincerely,

Trenton L. Mays, M.S., CHP
Radiation Safety Officer
Telephone: 317-276-2747
Email: t.mays@lilly.com

enclosure

RECEIVED OCT 23 2018

ATTACHMENT

License Condition #10: Request to **remove** 2500 Innovation Way, Greenfield, Indiana as an address of use as identified below:

10. Licensed material may be used or stored only at the licensee's facilities located at:

- A. Materials Center, 1249 White River Parkway, Indianapolis, Indiana, 46221
- B. Clinton Laboratories, State Road 63, Clinton, Indiana, 47842
- C. Evonik Corporation, Tippecanoe Laboratories, 1650 Lilly Road, Lafayette, Indiana, 47909
- ~~D. Elanco Animal Health, World Headquarters, 2500 Innovation Way, Greenfield, Indiana 46140~~
- E. Eli Lilly and Company's main research campus, Lilly Corporate Center, 893 South Delaware Street, Indianapolis, Indiana, 46285
- F. Lilly Technology Center, 1555 South Harding Street, Indianapolis, Indiana, 46221

Elanco Animal Health, World Headquarters: Activities conducted at this location involved laboratory procedures handling carbon-14 labeled compounds. There were no specific designated special use areas for this location listed on Broad Scope license 13-01133-02. All appropriate surveys have been conducted to deem the site releasable for unrestricted use in accordance with NRC regulations and license conditions.

Given the current separation of Eli Lilly and Elanco, Elanco has no current plans to use radioactive material at this location so will not be submitting a license request for the 2500 Innovation Way address at this time.

Lilly

Research Laboratories

of Eli Lilly and Company

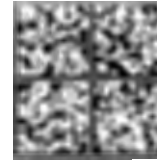
RAISON SAFETY

ly Corporate Center
napolis, Indiana 46285

CERTIFIED MAIL™



7004 2510 0004 9529 4855



U.S. POSTAGE >> PITNEY BOWES



ZIP 46225 \$ 006.67⁰
02 4W
0000355019 OCT 17 2018

RECEIVED OCT 23 2018

Materials Licensing Branch
United States Nuclear Regulatory Commission, Region III
2443 Warrenville Road, Suite 210
Lisle, IL 60532-4352

6053284352 0021

