



Lidstone and Associates - A Wenck Company

August 3, 2018

Mr. Dominick Orlando


Senior Project Manager
Materials Decommissioning Branch
Division of Decommissioning, Uranium Recovery, and Waste Programs
Mail Stop T-8F5
Washington, D.C. 20555-0001

RE: American Nuclear Corporation Tailings Pond #1 Interim Site Stabilization

Dear Mr. Orlando:

Enclosed for your information and file are two copies of the Record Drawings for the American Nuclear Corporation Tailings Pond #1 Interim Site Stabilization Project. Please let me know if you have any questions or concerns- or if you need additional copies. It has been and continues to be a pleasure working with you and the NRC.

Sincerely,
Lidstone & Associates, Wenck Company



Christopher D. Lidstone P.G.
Principal and Regional Manager

CDL:rce

Enclosures

Copy w/o enclosure: Muthu Kuchanur, DEQ/LQD
Sent via: Priority Mail

Z:\WPFinal\OPEN\WYDEQ104 - B4921-0104 ANC Tailings\TASK ORDER 4\Record Drawings to NRC.docx

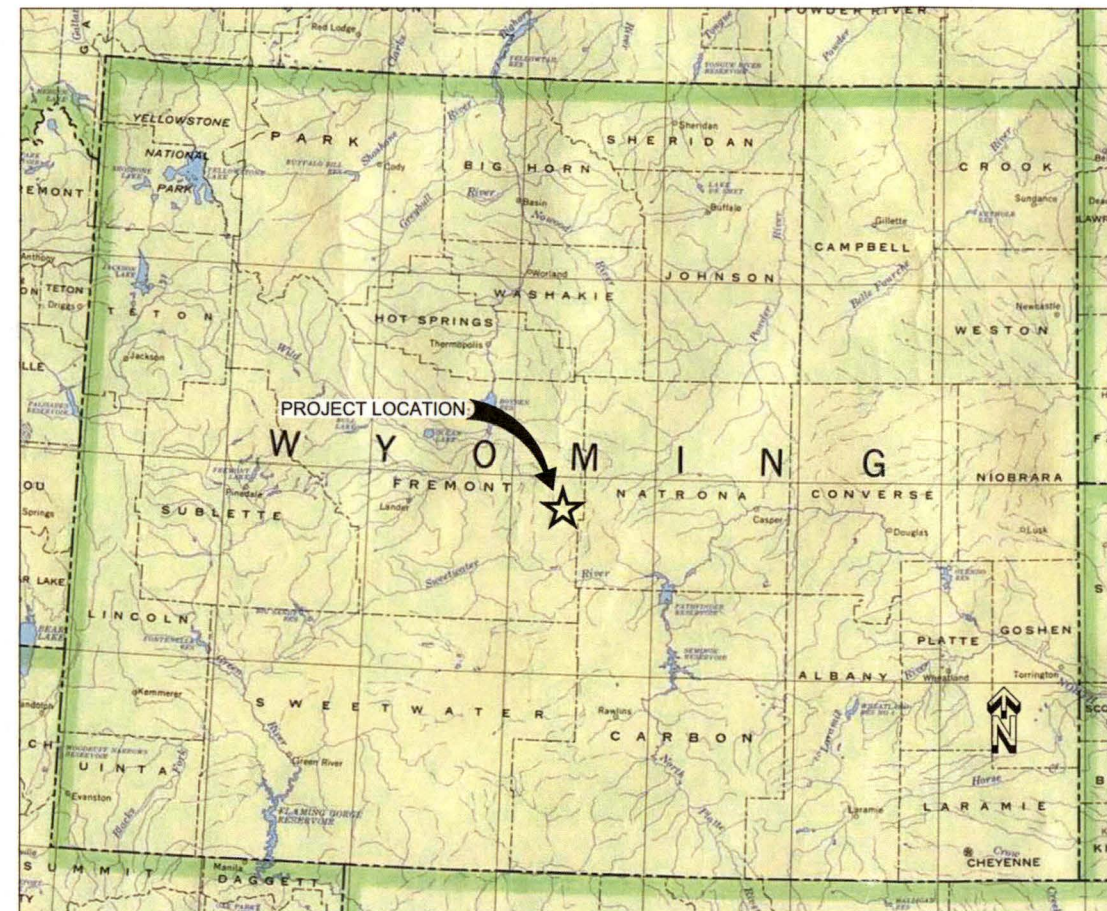
RECORD DRAWINGS FOR **Wyoming Department of Environmental Quality** **Land Quality Division** **American Nuclear Corporation (ANC) Tailings Pond #1** **Interim Site Stabilization Plan**

CLIENT:

WYOMING DEPARTMENT OF
 ENVIRONMENTAL QUALITY
 LAND QUALITY DIVISION
 200 WEST 17TH ST., SUITE 10
 CHEYENNE, WY 82002

ENGINEER:

LIDSTONE AND ASSOCIATES - A WENCK COMPANY
 4025 AUTOMATION WAY, BLDG. E
 FORT COLLINS, COLORADO 80525



INDEX MAP



Lidstone and Associates - A Wenck Company

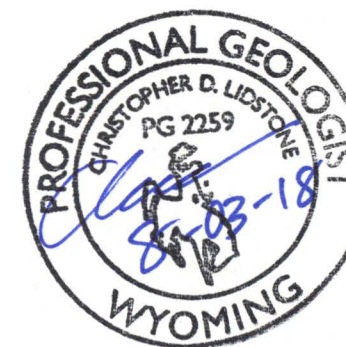
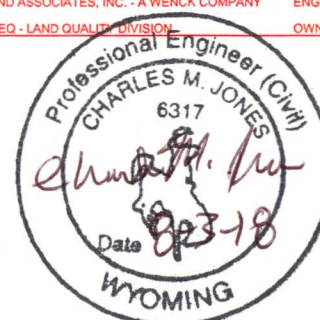
RECORD DRAWING

THIS RECORD DRAWING HAS BEEN PREPARED IN PART, BASED UPON
 INFORMATION FURNISHED BY OTHERS. WHILE THIS INFORMATION IS
 BELIEVED TO BE RELIABLE, LIDSTONE AND ASSOCIATES - A WENCK
 COMPANY, CANNOT ASSURE ITS ACCURACY, AND THIS IS NOT RESPONSIBLE
 FOR THE ACCURACY OF THIS RECORD DRAWING OR ANY ERRORS OR
 OMISSIONS WHICH MAY HAVE BEEN INCORPORATED INTO IT AS A RESULT.
 THOSE RELYING ON THIS RECORD DOCUMENT ARE ADVISED TO OBTAIN
 INDEPENDENT VERIFICATION OF ITS ACCURACY BEFORE APPLYING IT FOR
 ANY PURPOSE.

PREPARED BY: *CM* DATE: *8-3-18*

PROJECT CONSTRUCTION TEAM

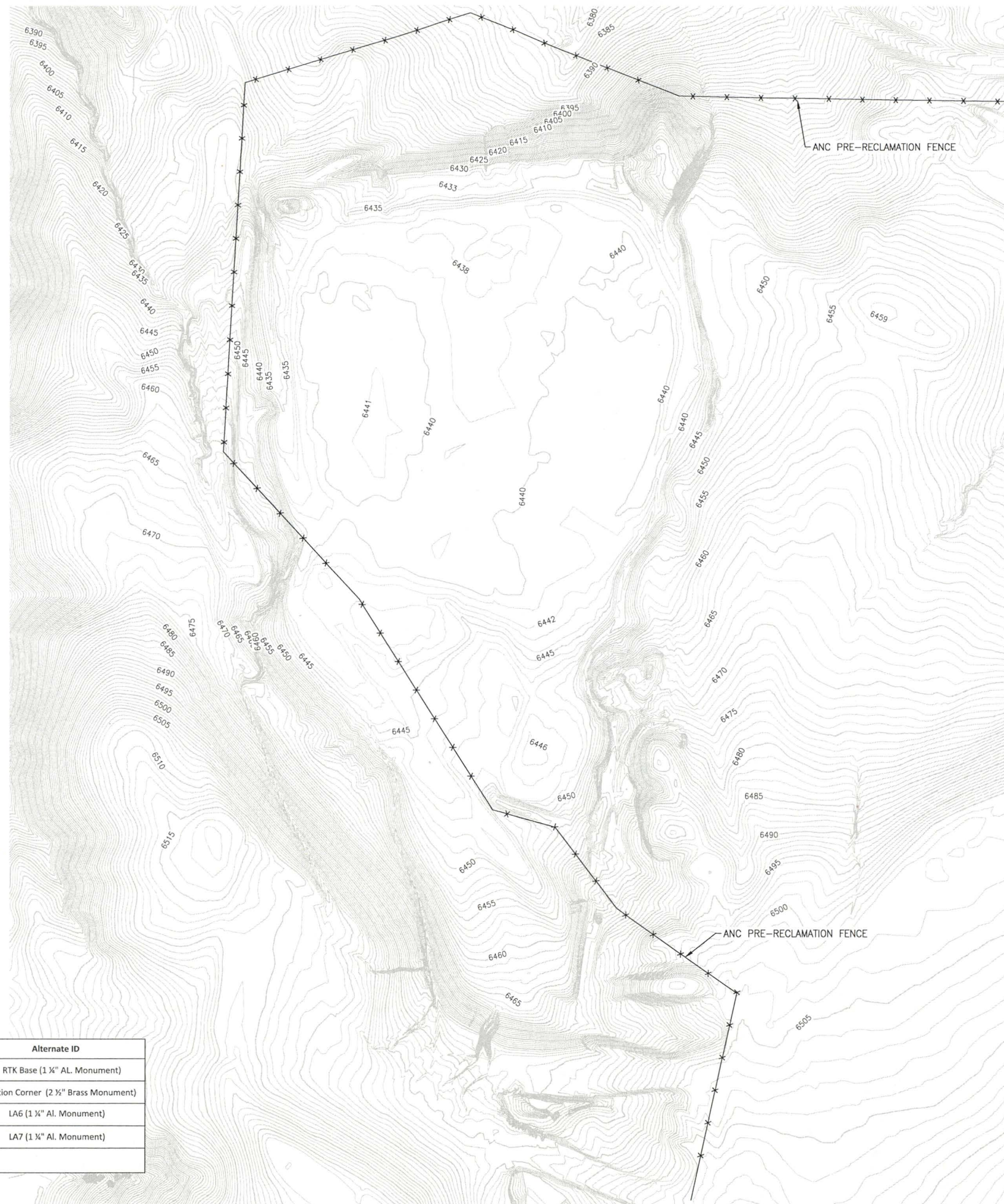
M. K. WEEDEN CONSTRUCTION, INC. GENERAL CONTRACTOR
 LIDSTONE AND ASSOCIATES, INC. - A WENCK COMPANY ENGINEER
 WYOMING DEQ - LAND QUALITY DIVISION OWNER / FUNDING AGENCY



RECORD DRAWINGS

SHEET INDEX

SHEET NO.	SHEET TITLE
G-001	COVER SHEET
G-002	PRE-RECLAMATION TOPOGRAPHY
G-003	SURFACE READINGS (UR)
C-101	PLAN VIEW (AERIAL)
C-102	PLAN VIEW (CONTOURS)
C-201	DRAINAGE CHANNEL PROFILES AND SECTION VIEWS
C-202	CROSS-SECTIONS



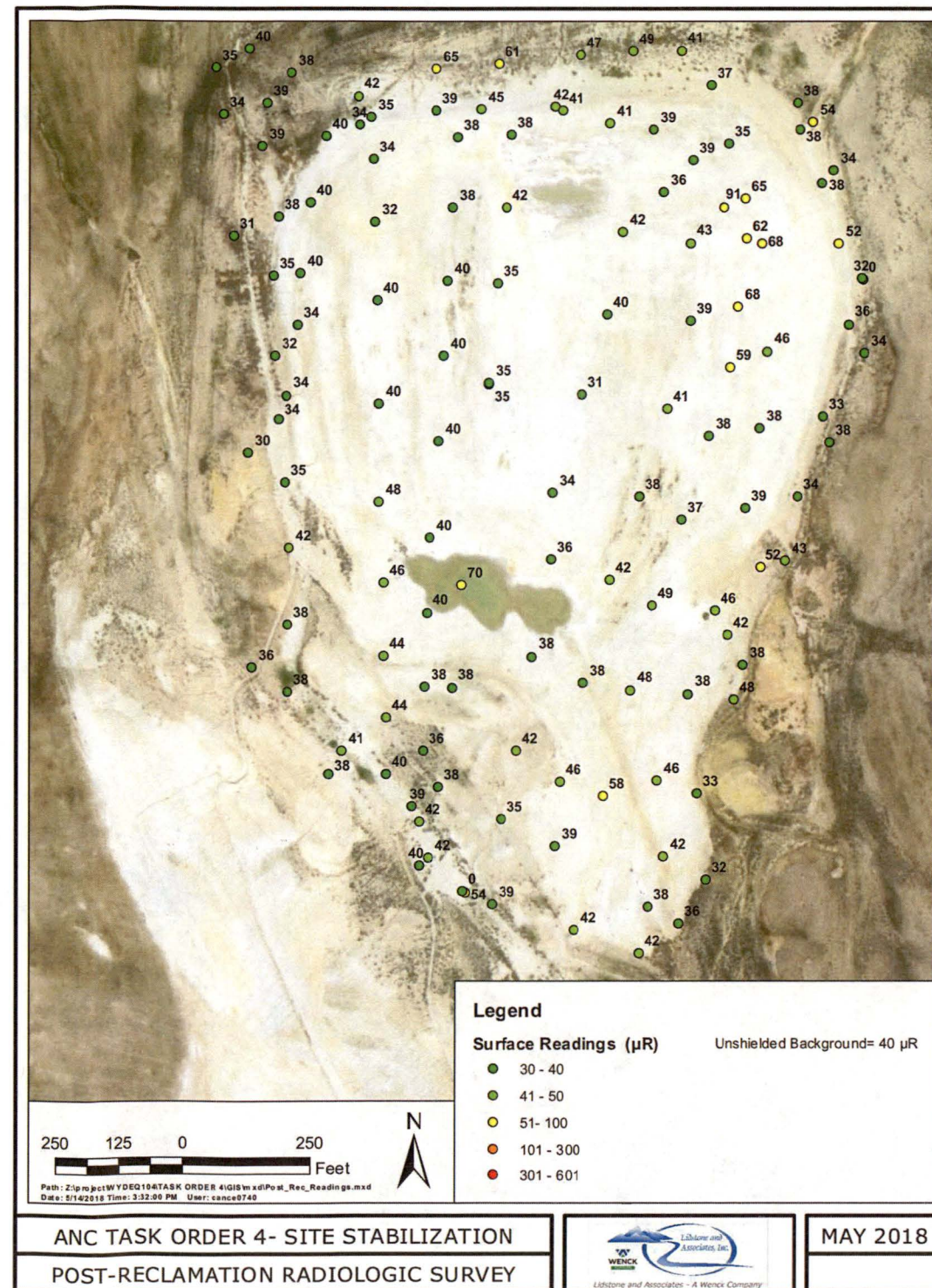
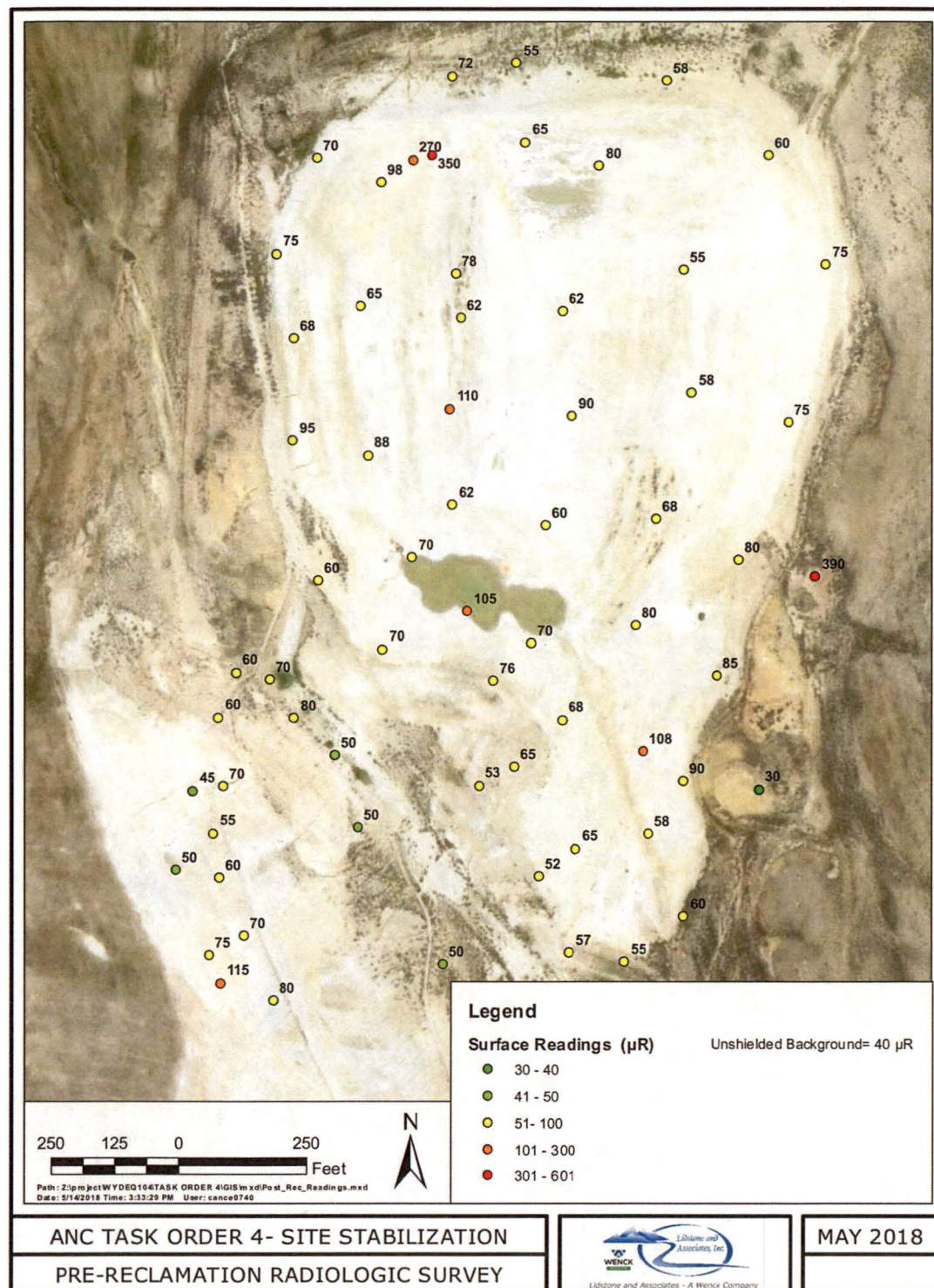
Control Point	Northing (ft.)	Easting (ft.)	Elevation (ft.)	Alternate ID
100	842337.62	2267049.72	6,440.42	RTK Base (1 ¼" AL. Monument)
4	838892.82	2267472.38	6,503.57	Section Corner (2 ½" Brass Monument)
6	843872.93	2267073.75	6,387.96	LA6 (1 ¼" AL. Monument)
7	843080.18	2263245.55	6,435.19	LA7 (1 ¼" AL. Monument)
PROJECTION: NONE (LOCAL TVA)				

TOPOGRAPHY FROM AERIAL FLIGHT BY:
DATA MAP DIGITAL SERVICES
DATE: AUGUST 20, 2015
CONTROL SET BY AVI P.C., CHEYENNE, WY

THIS RECORD DRAWING HAS BEEN PREPARED IN PART, BASED UPON INFORMATION FURNISHED BY OTHERS, WHILE THIS INFORMATION IS BELIEVED TO BE RELIABLE. LIDSTONE AND ASSOCIATES - A WENCK COMPANY, CANNOT ASSURE ITS ACCURACY, AND THUS IS NOT RESPONSIBLE FOR THE ACCURACY OF THIS RECORD DRAWING OR ANY ERRORS OR OMISSIONS WHICH MAY HAVE BEEN INCORPORATED INTO IT AS A RESULT. THOSE RELYING ON THIS RECORD DOCUMENT ARE ADVISED TO OBTAIN INDEPENDENT VERIFICATION OF ITS ACCURACY BEFORE APPLYING IT FOR ANY PURPOSE.

DATE: _____

[illegible]

[illegible]



0 250' 500'

CONTOUR INTERVAL: 1 FT

THIS RECORD DRAWING HAS BEEN PREPARED IN PART, BASED UPON INFORMATION FURNISHED BY OTHERS. WHILE THIS INFORMATION IS BELIEVED TO BE RELIABLE, LIDSTONE AND ASSOCIATES - A WENCK COMPANY, CANNOT ASSURE ITS ACCURACY, AND THUS IS NOT RESPONSIBLE FOR THE ACCURACY OF THIS RECORD DRAWING OR ANY ERRORS OR OMISSIONS WHICH MAY HAVE BEEN INCORPORATED IN IT AS A RESULT. THE USER RELYING ON THIS RECORD DOCUMENT ARE ADVISED TO OBTAIN INDEPENDENT VERIFICATION OF ITS ACCURACY BEFORE APPLYING IT FOR ANY PURPOSE.

[illegible]



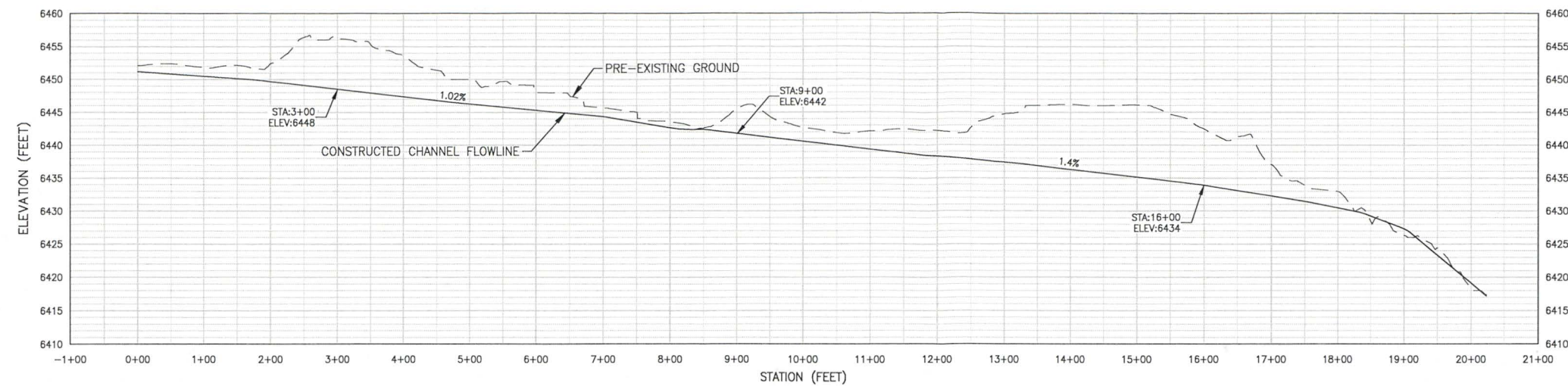
0 150' 300'

CONTOUR INTERVAL: 1 FT

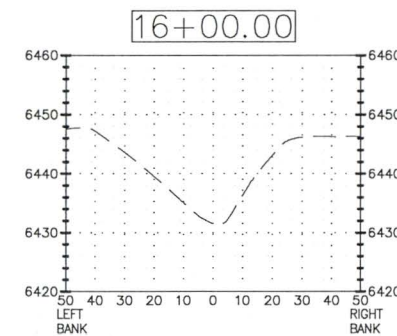
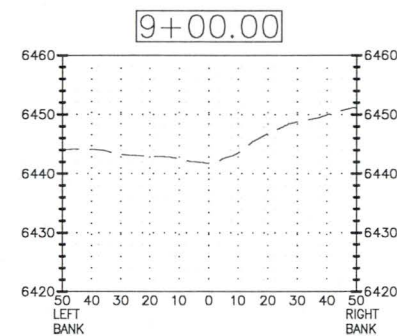
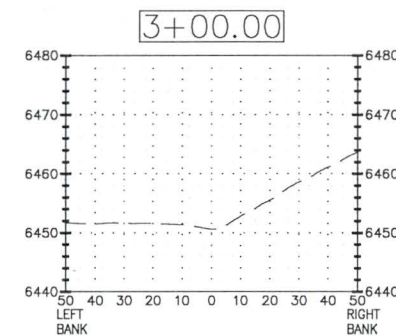
THIS RECORD DRAWING HAS BEEN PREPARED IN PART, BASED UPON INFORMATION FURNISHED BY OTHERS. WHILE THIS INFORMATION IS BELIEVED TO BE RELIABLE, LIDSTONE AND ASSOCIATES - A WENCK COMPANY, CANNOT ASSURE ITS ACCURACY, AND THUS IS NOT RESPONSIBLE FOR THE ACCURACY OF THIS RECORD DRAWING OR ANY ERRORS OR OMISSIONS WHICH MAY HAVE BEEN INCORPORATED INTO IT AS A RESULT. RELYING ON THIS RECORD DRAWING DOCUMENT ARE ADVISED TO OBTAIN INDEPENDENT VERIFICATION OF ITS ACCURACY BEFORE APPLYING IT FOR ANY PURPOSE.

DATE: _____

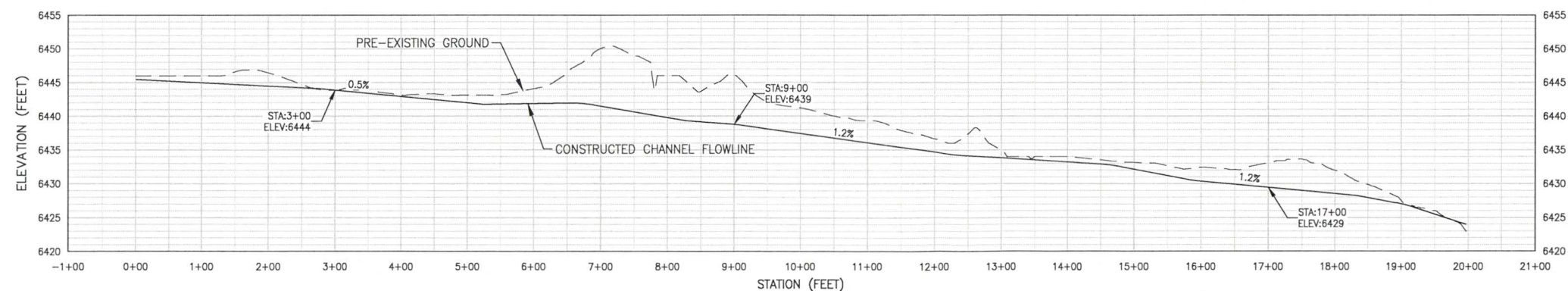
[illegible]



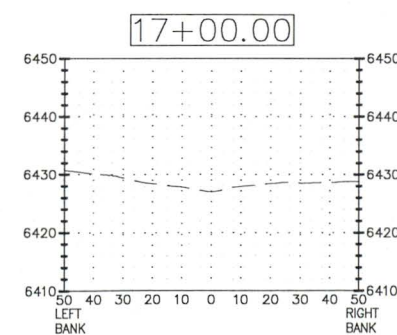
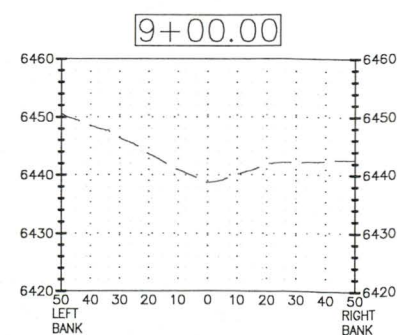
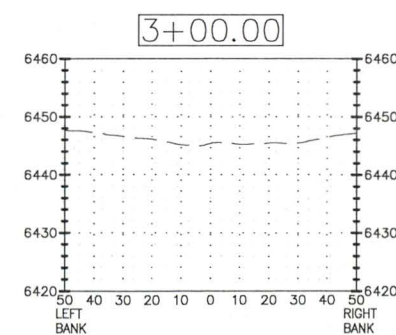
TP-1 EAST DIVERSION CHANNEL PROFILE
1"=100'H & 1"=10V



TP-1 EAST DIVERSION CHANNEL SECTION VIEWS
1"=30'H & 1"=15'V



TP-1 WEST DIVERSION CHANNEL PROFILE
1"=100'H & 1"=10'V



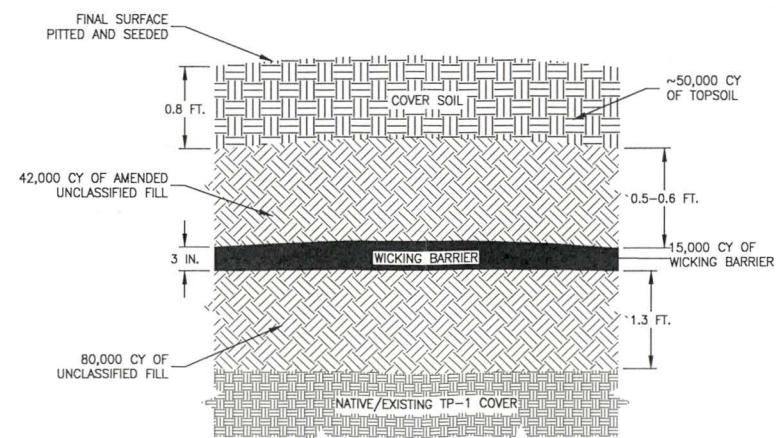
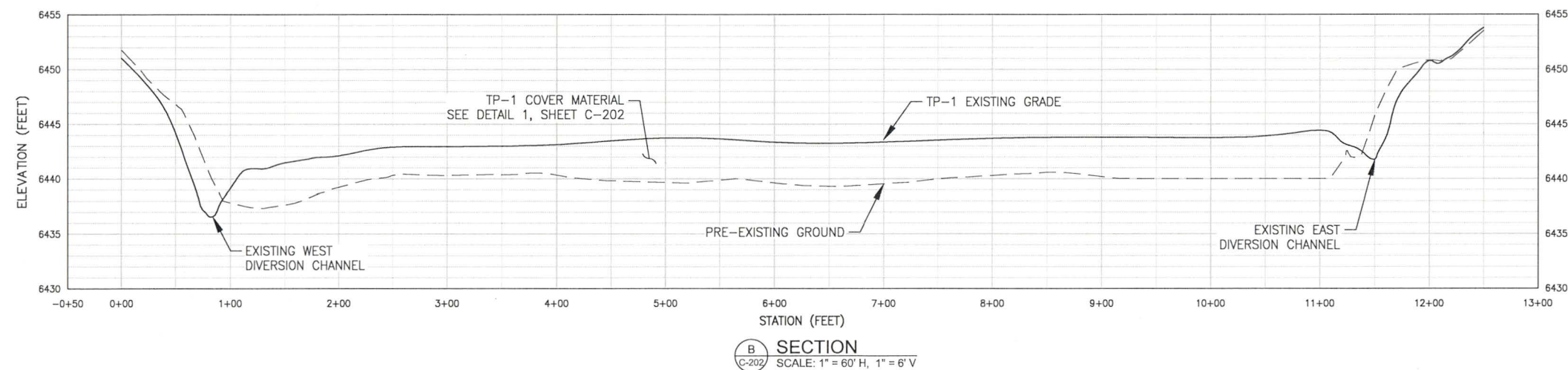
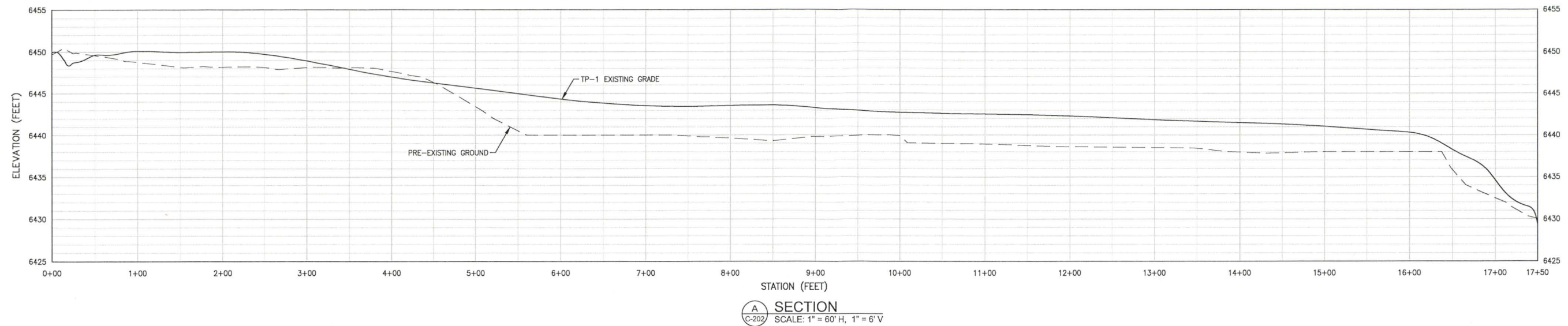
TP-1 WEST DIVERSION CHANNEL SECTION VIEWS
1"=30'H & 1"=15'V

RECORD DRAWING

THIS RECORD DRAWING HAS BEEN PREPARED IN PART, BASED UPON INFORMATION FURNISHED BY OTHERS. WHILE THIS INFORMATION IS BELIEVED TO BE RELIABLE, LIDSTONE AND ASSOCIATES - A WENCK COMPANY, CANNOT ASSURE ITS ACCURACY, AND THUS IS NOT RESPONSIBLE FOR THE ACCURACY OF THIS RECORD DRAWING OR ANY ERRORS OR OMISSIONS WHICH MAY HAVE BEEN INCORPORATED IN IT. AS A RESULT, THOSE RELYING ON THIS RECORD DOCUMENT ARE ADVISED TO OBTAIN INDEPENDENT VERIFICATION OF ITS ACCURACY BEFORE APPLYING IT FOR ANY PURPOSE.

PREPARED BY: _____ DATE: _____

[illegible]



NOTE: MEASUREMENTS WERE FIELD VERIFIED

1 TP-1 COVER MATERIAL
C-202 NOT TO SCALE

RECORD DRAWING

THIS RECORD DRAWING HAS BEEN PREPARED IN PART, BASED UPON INFORMATION FURNISHED BY OTHERS, WHILE THIS INFORMATION IS BELIEVED TO BE RELIABLE, LIDSTONE AND ASSOCIATES - A WENCK COMPANY, CANNOT ASSURE ITS ACCURACY, AND THUS IS NOT RESPONSIBLE FOR THE ACCURACY OF THIS RECORD DRAWING OR ANY ERRORS OR OMISSIONS WHICH MAY HAVE BEEN INCORPORATED INTO IT AS A RESULT. THOSE RELYING ON THIS RECORD DOCUMENT ARE ADVISED TO OBTAIN INDEPENDENT VERIFICATION OF ITS ACCURACY BEFORE APPLYING IT FOR ANY PURPOSE.

PREPARED BY: _____ DATE: _____

[illegible]