



UNITED STATES OF AMERICA  
NUCLEAR REGULATORY COMMISSION  
ATOMIC SAFETY AND LICENSING BOARD

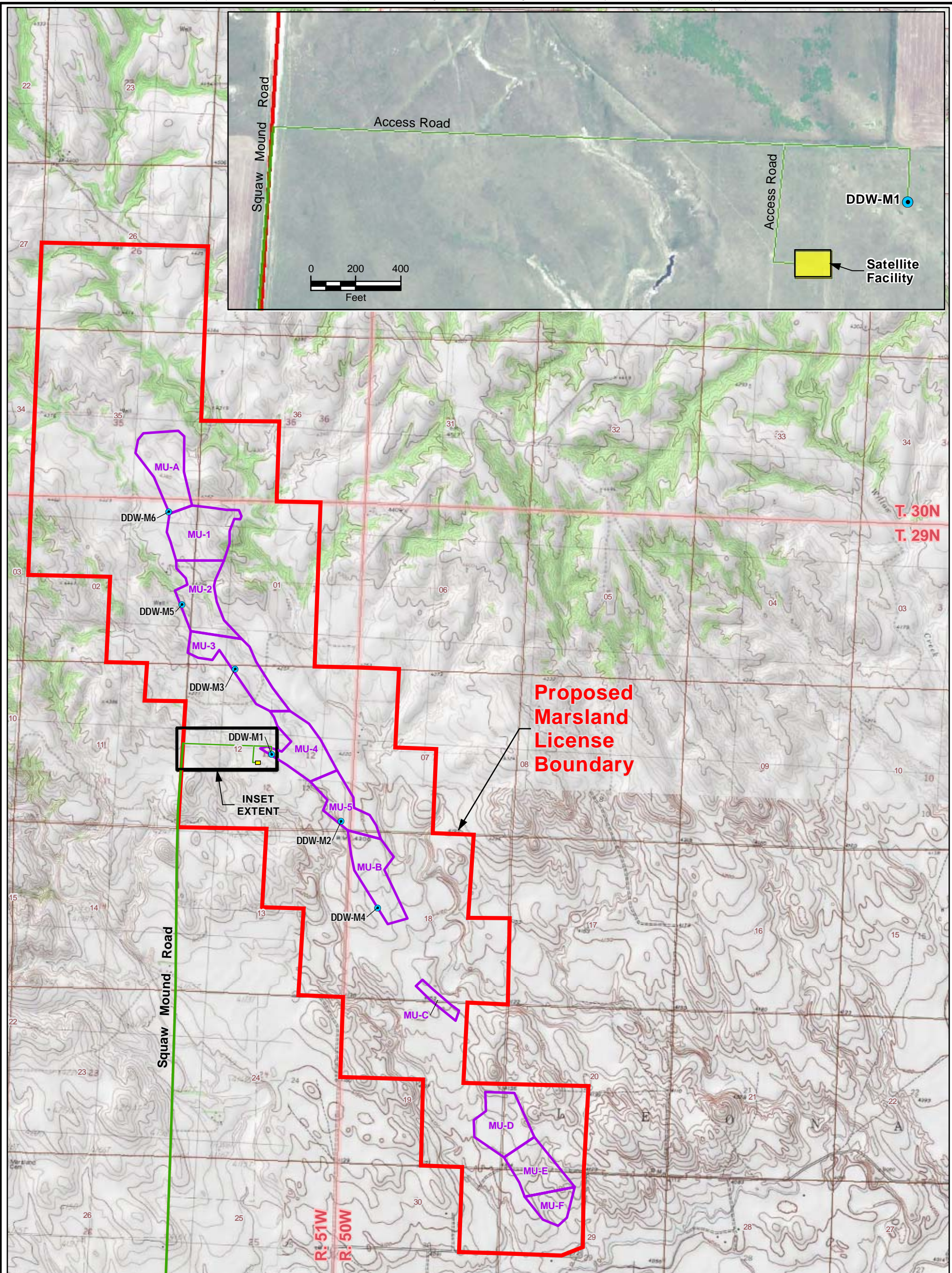
In the Matter of  
  
CROW BUTTE RESOURCES, INC.  
  
(Marsland Expansion Area)

Docket No. 40-8943-MLA-2  
  
ASLBP No. 13-926-01-MLA-BD01

Hearing Exhibit

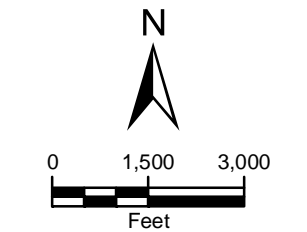
Exhibit Number:

Exhibit Title:



LEGEND

- Proposed Deep Disposal Well
- Squaw Mound Road
- Access Road
- Satellite Facility (Restricted Area)
- Mine Unit
- Proposed Marsland License Boundary



PROJECTION: NAD 1983, STATE PLANE  
NEBRASKA NORTH, FIPS 2600  
SOURCES: US TOPO MAPS, SERVICED  
BY ESRI ARCGIS ONLINE



CROW BUTTE  
RESOURCES, INC.

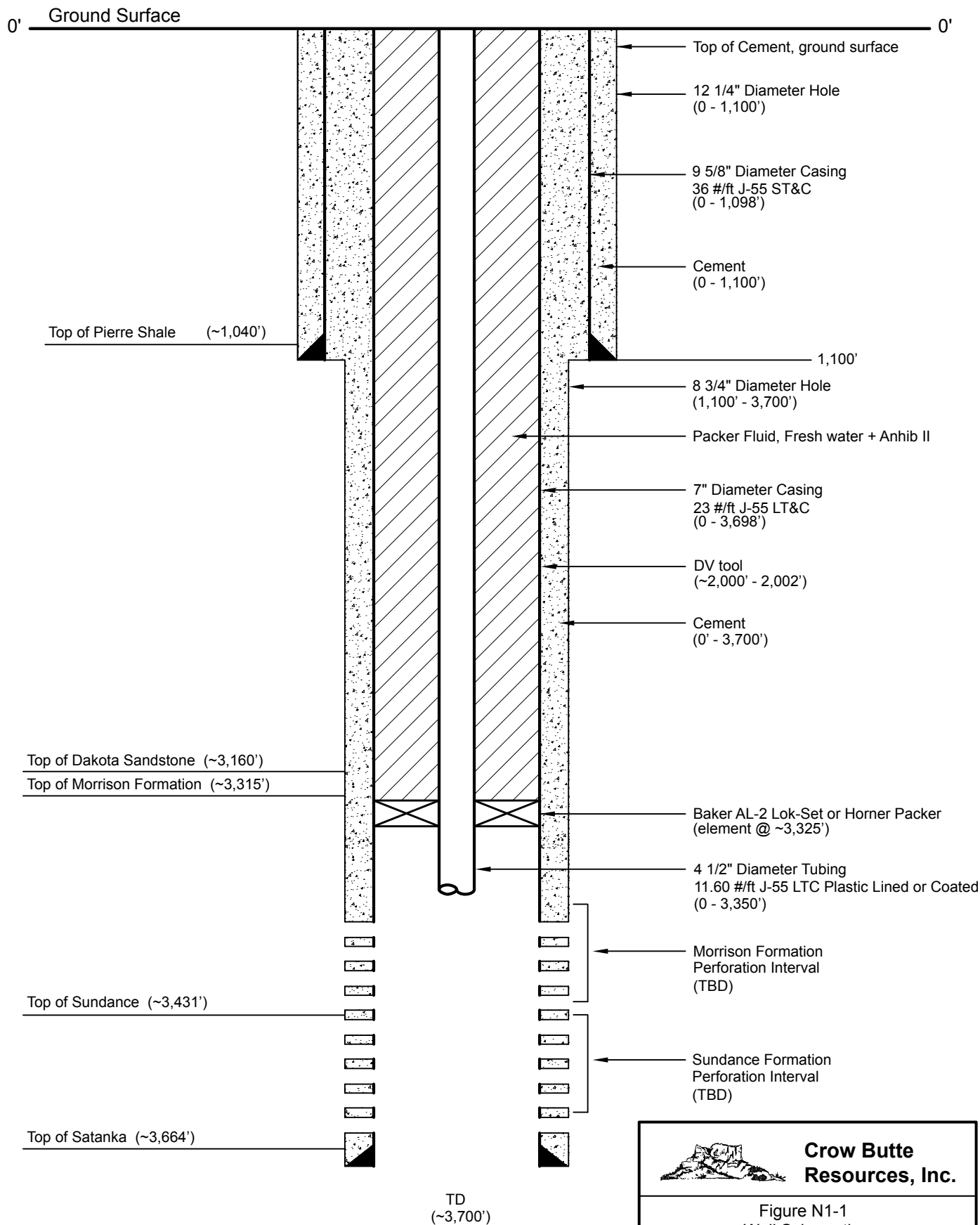
FIGURE 1.7-5  
GENERAL ARRANGEMENT  
SATELLITE FACILITY VIEW

PROJECT: CO001636 MAPPED BY: JC CHECKED BY: JEC



630 Plaza Drive, Ste. 100  
Highlands Ranch, CO 80129  
P: 720-344-3500 F: 720-344-3535  
www.arcadis-us.com





Note:

Approximate depths in feet below ground surface based on estimated geologic tops at proposed well DDW-M1.

NOT TO SCALE



**Crow Butte  
Resources, Inc.**

**Figure N1-1  
Well Schematic  
Proposed MEA Class 1 Well**

Marsland Expansion Area - Class I UIC Area Permit Application

Scale: NTS	Date: September 2014
_MEA_CIA_Figure N1-1.pdf	By: KRS Checked: HD

**Petrotek**

5935 South Zang Street, Suite 200  
Littleton, Colorado 80127 USA  
303-290-9414  
[www.petrotek.com](http://www.petrotek.com)