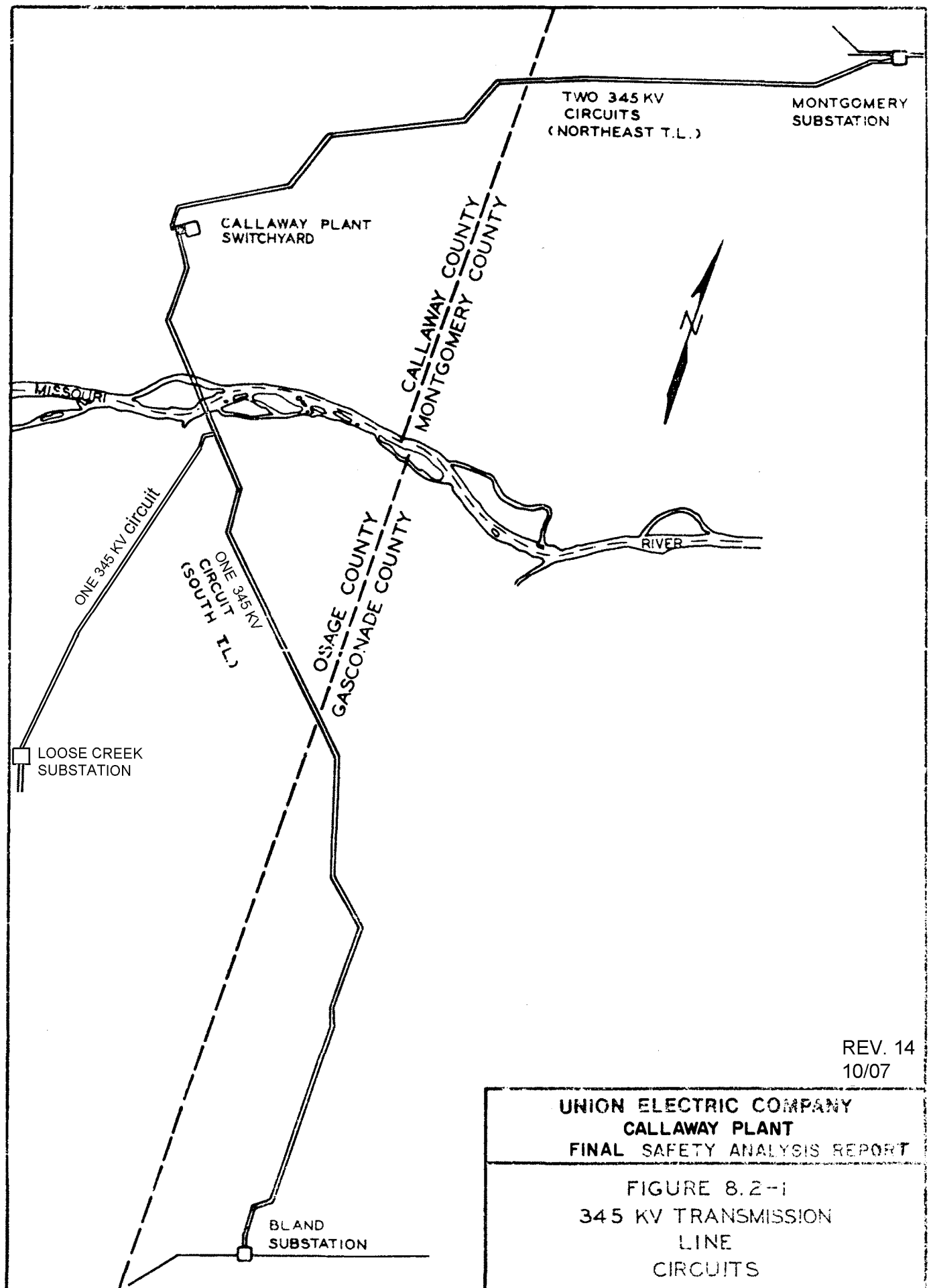


C.I.P.S.	CENTRAL ILLINOIS PUBLIC SERVICE COMPANY
E.E.I.	ELECTRIC ENERGY INC.
I.P.C.	ILLINOIS POWER COMPANY
K.C.P.&L.	KANSAS CITY POWER & LIGHT COMPANY
I.I.G.&E.	IOWA-ILLINOIS GAS & ELECTRIC COMPANY
I.S.U.	IOWA SOUTHERN UTILITIES
M.P.S.	MISSOURI PUBLIC SERVICE COMPANY
A.E.C.I.	ASSOCIATED ELEC. COOP. INC.
ARK.-MO.	A KANSAS-MISSOURI POWER COMPANY
T.V.A.	TENNESSEE VALLEY AUTHORITY
S.P.A.	SOUTHWESTERN POWER ADMINISTRATION
C.E.C.	CITIZENS ELECTRIC CORP.
P.S.O.	PUBLIC SERVICE COMPANY OF OKLAHOMA
K.G.&E.	KANSAS GAS & ELECTRIC COMPANY

HISTORICAL INFORMATION

**UNION ELECTRIC COMPANY
CALLAWAY PLANT
FINAL SAFETY ANALYSIS REPORT**

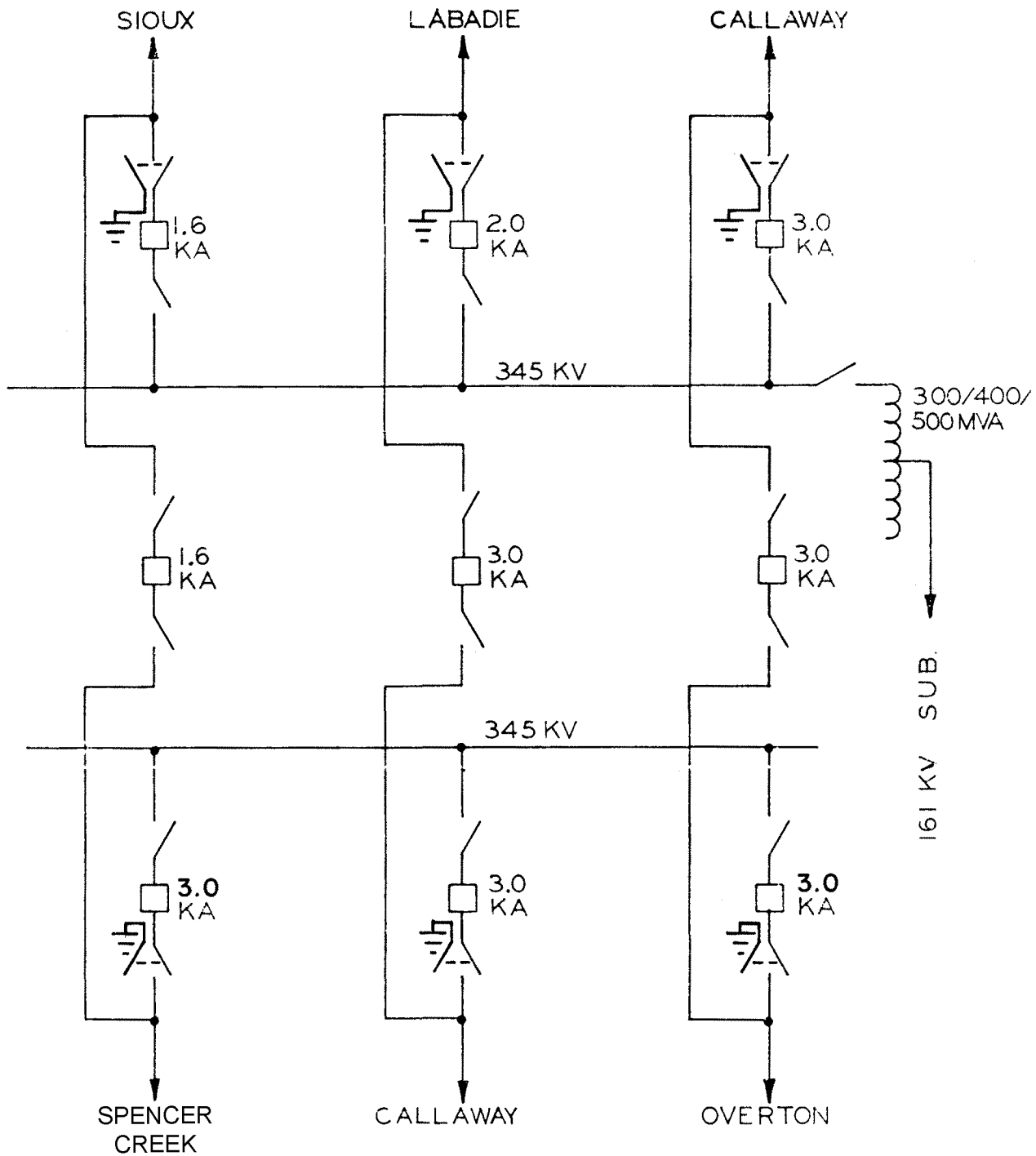
**FIGURE 8.1-1
SYSTEM MAP**



REV. 14
10/07

UNION ELECTRIC COMPANY
CALLAWAY PLANT
FINAL SAFETY ANALYSIS REPORT

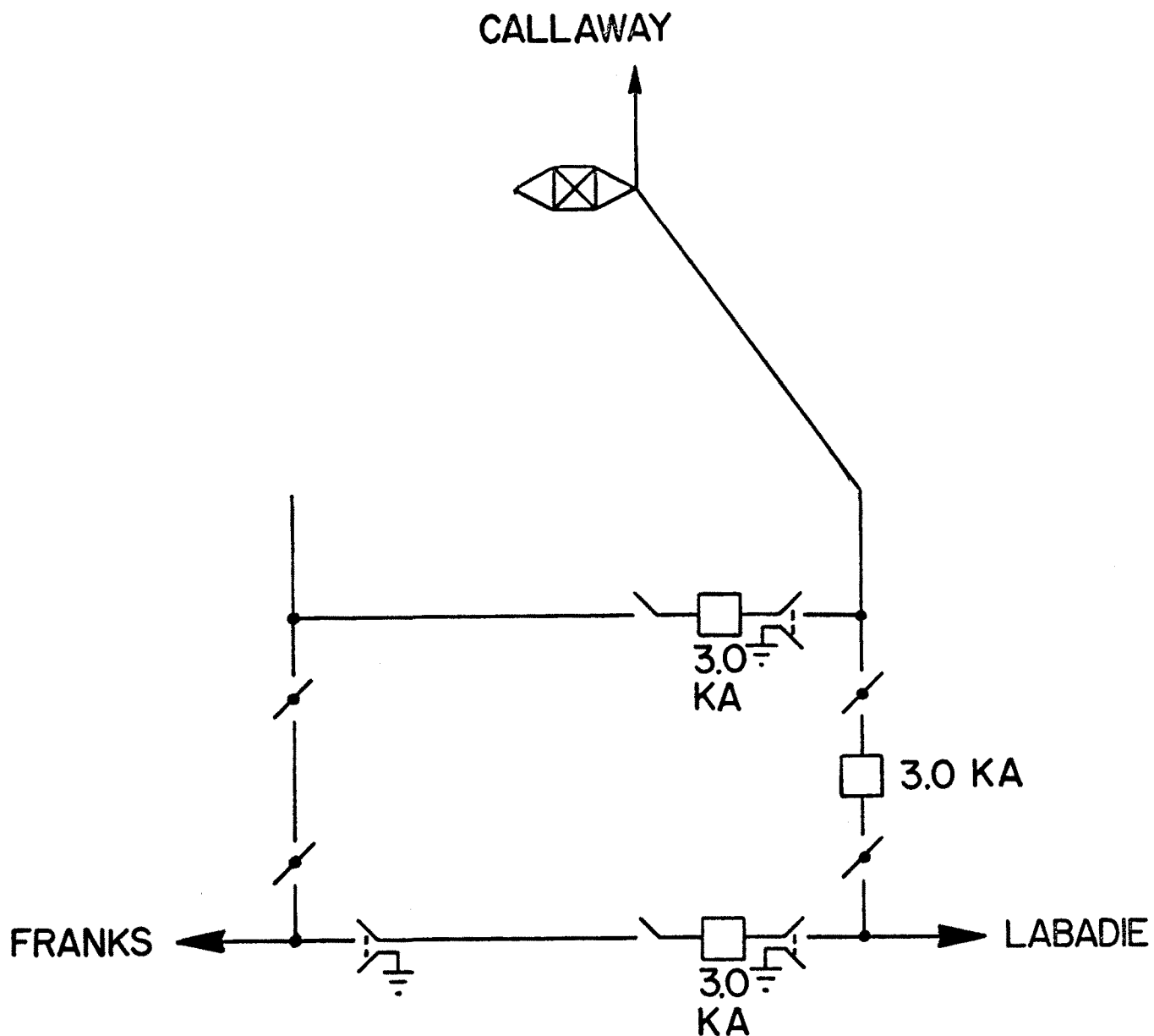
FIGURE 8.2-1
345 KV TRANSMISSION
LINE
CIRCUITS



REV. 1
10/07

**UNION ELECTRIC COMPANY
CALLAWAY PLANT
FINAL SAFETY ANALYSIS REPORT**

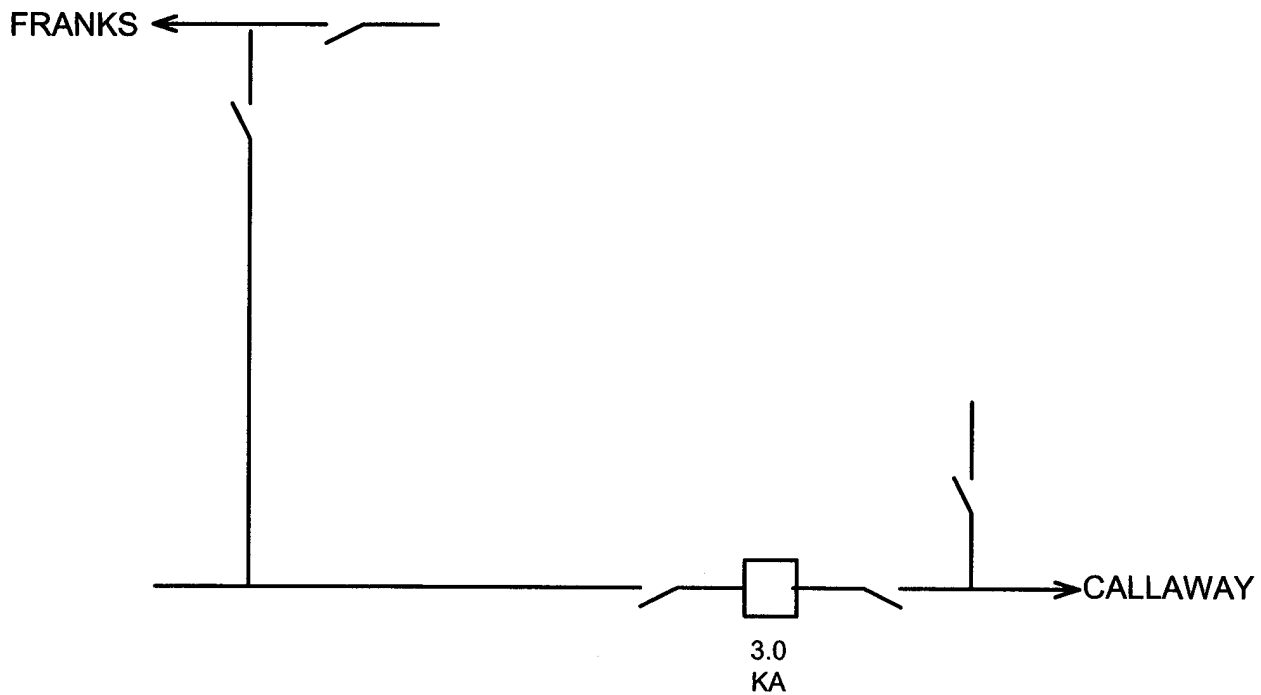
FIGURE 8.2-2
MONTGOMERY 345 KV
SUBSTATION
1981



REV OL-13
05/03

UNION ELECTRIC COMPANY
CALLAWAY PLANT
FINAL SAFETY ANALYSIS REPORT

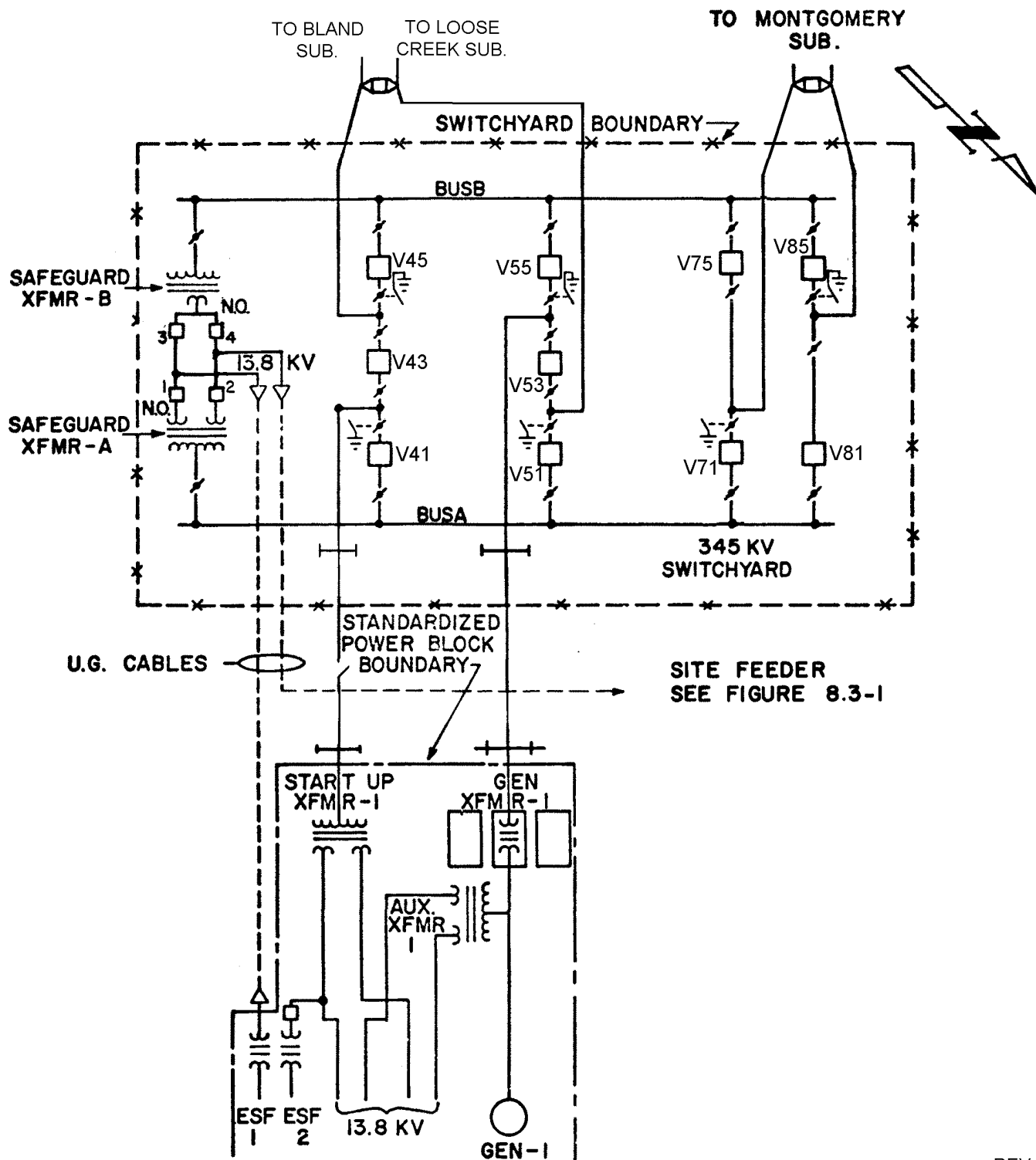
FIGURE 8.2-3
345KV ONE LINE
BLAND SUBSTATION



Rev. 0
10/07

**UNION ELECTRIC COMPANY
CALLAWAY PLANT
FINAL SAFETY ANALYSIS REPORT**

FIGURE 8.2-4
345 KV ONE LINE
LOOSE CREEK SUBSTATION

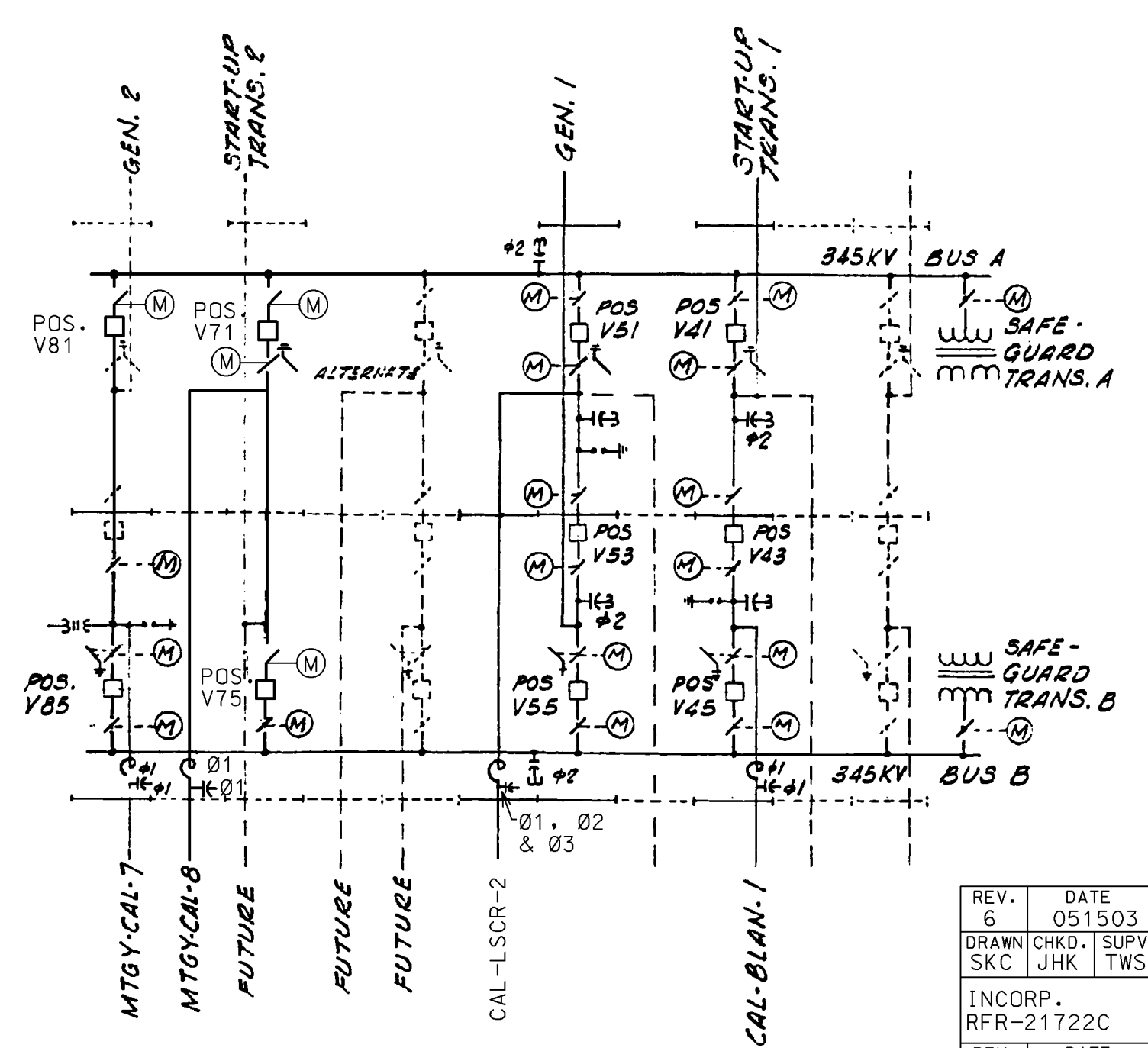
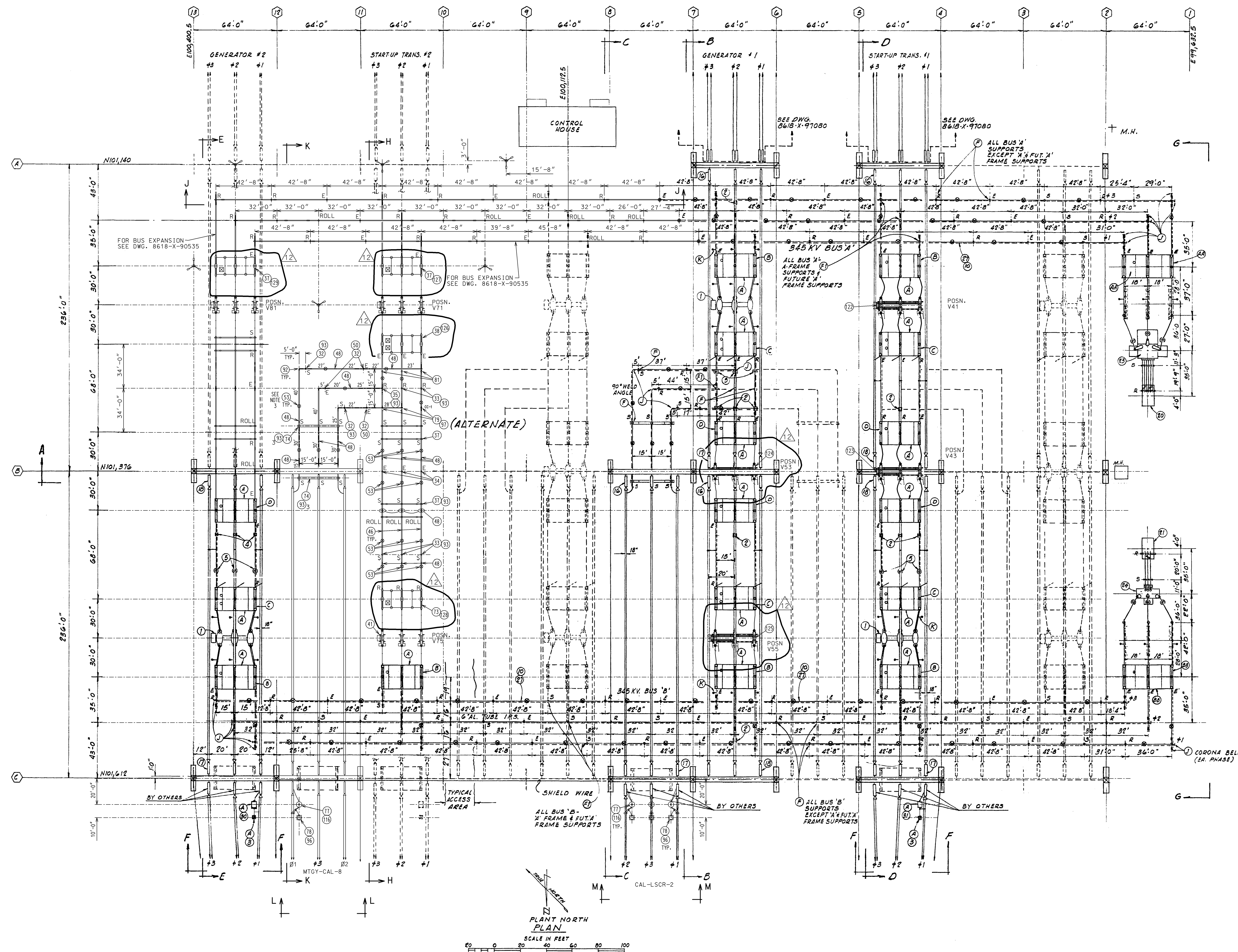


REV. 15
10/07

UNION ELECTRIC COMPANY
CALLAWAY PLANT
FINAL SAFETY ANALYSIS REPORT

FIGURE 8.2-5
345 KV ONE LINE AND
GENERAL ARRANGEMENT
CALLAWAY PLANT

Figure 8.2-6 has been deleted



ONE LINE DIAGRAM

E = EXPANSION BUS SUPPORT
 S = SLIP FIT BUS SUPPORT
 R = FIX (RIGID) FIT BUS SUPPORT
 ROLL = ROLLER BUS SUPPORT

NOTES:

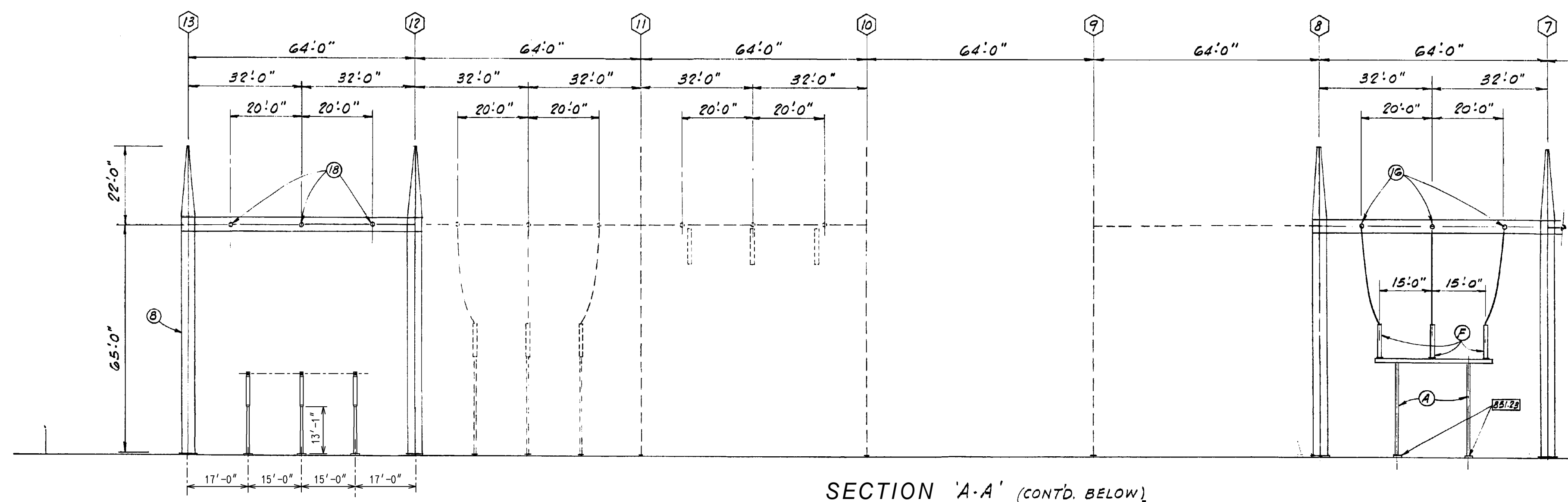
1. --- INDICATES DAMPER CABLE. 55G KCMIL A.A. (BY CUSTOMER) TO BE INSTALLED INSIDE ALL BUS TUBING. SEE NOTE 3.
2. IF VERTICAL BREAK SWITCHES ARE USED, HINGED END TO BE ON PCB SIDE.
3. 8 INDICATES BUS VIBRATION DAMPER LOCATED AT THE 1/3 POINT OF THE SPAN PLUS 2 FEET FROM THE MOST RIGID BUS SUPPORT. (EXAMPLE - 1/3 OF SPAN 44'-0" = 14'-8" PLUS 2'-0" = 16'-8") DAMPERS ARE ALCOA CAT NO 1706-D13 EHV
4. DENOTES EQUIPMENT PERMANENTLY REMOVED FROM SERVICE AND MAY NOT BE LOCATED AS SHOWN.

REFERENCE DWGS.:

EQUIPT. BILL OF MATERIAL --- 8618-G-95170
 EQPT. BILL OF MATERIAL, CONTINUED --- 8618-Z-90563
 EQPT. BILL OF MATERIAL, CONTINUED --- 8618-Z-90538
 EQPT. ARRMNT. PLAN POSN. V81/BUS 'A' EXP. --- 8618-X-90535
 EQPT. ARRMNT. SECTS. SH. 1 --- 8618-Y-95167
 EQPT. ARRMNT. SECTS. SH. 2 --- 8618-Y-95168
 EQPT. ARRMNT. SECTS. SH. 3 --- 8618-X-90536
 EQPT. ARRMNT. SECTS. SH. 4 --- 8618-X-90537
 EQPT. ARRMNT. SECTS. SH. 5 --- 8618-Y-90562
 EQUIPT. DET. MISCELLANEOUS --- 8618-Y-95169
 DIS-TRAN EQUIPT. ARRANGEMENTS 345KV --- DWGS. 103005 TO 103012
 DIS-TRAN EQUIPT. ARRANGEMENTS 13.8KV --- DWGS. 103084 & 103085

AS-BUILT

DRAWN/R-2-77 G. FULLER CHKD 12/20/77 NRT CHKD SUPV	CALLAWAY LOCATION S15 UNION ELECTRIC COMPANY ST. LOUIS, MO.	EQUIPMENT ARRANGEMENT PLAN 345KV SWITCHYARD FSAR FIGURE 8.2-7 8618-X-95166 12	CLASS 67020 REV 12
--	--	---	-----------------------------





B



B



B



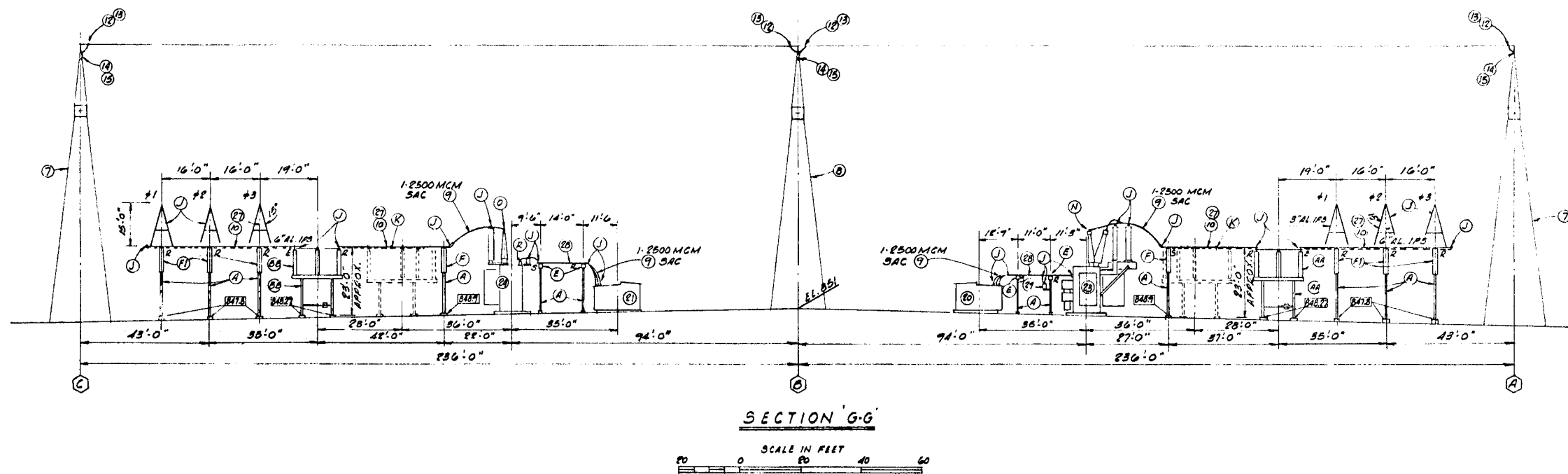
B

B

B

B

B



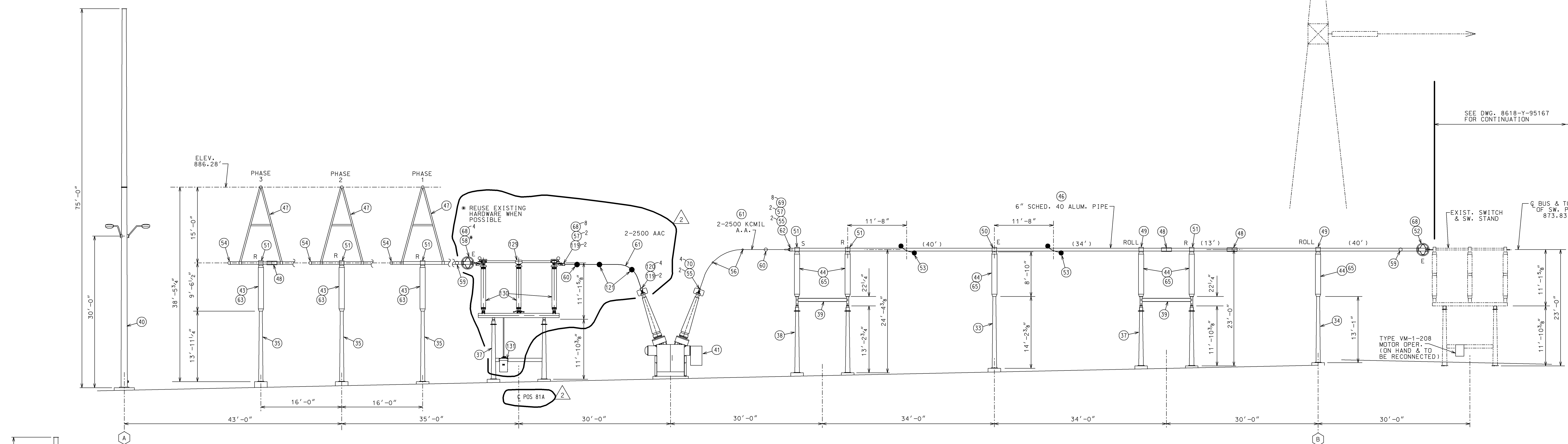
Rev. OL-0
6/86

UNION ELECTRIC COMPANY
CALLAWAY PLANT
FINAL SAFETY ANALYSIS REPORT

EQUIPMENT ARRANGEMENT

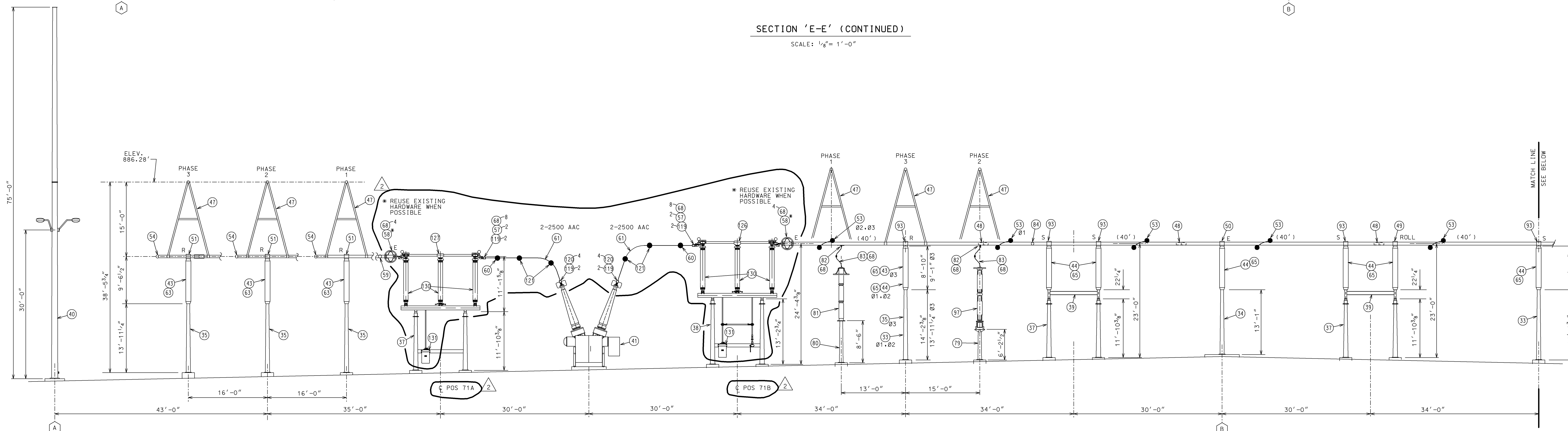
345 KV SWITCHYARD

FIGURE 8.2-10



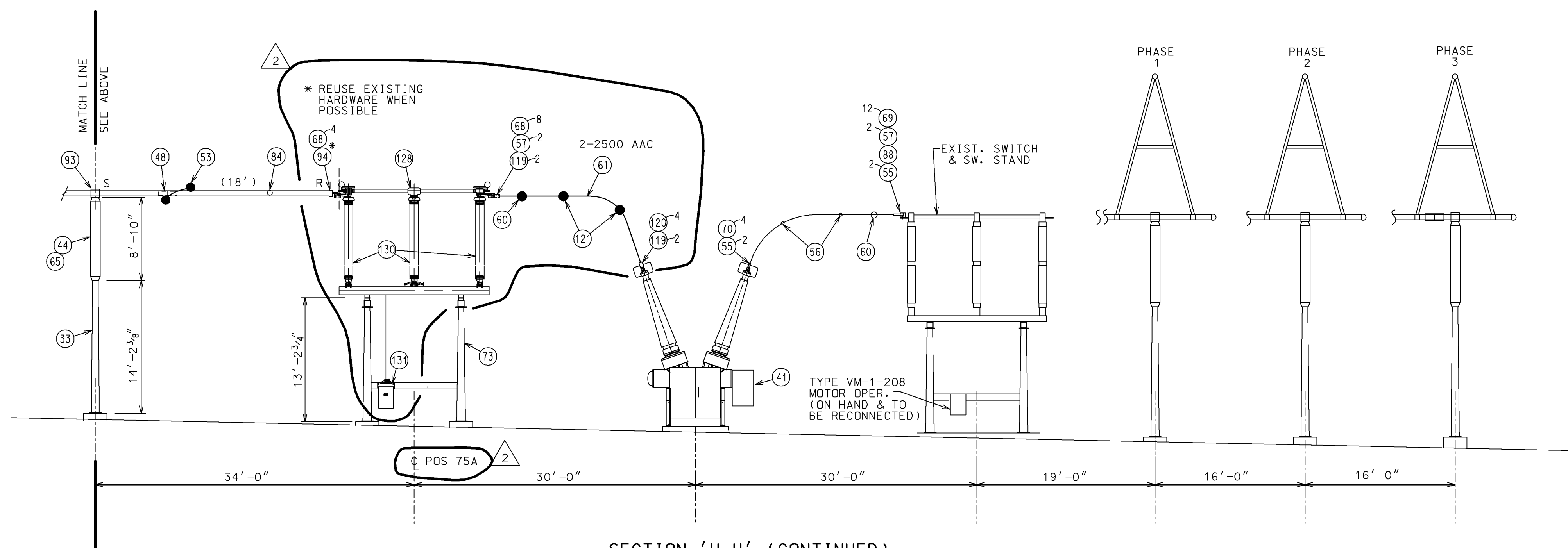
SECTION 'E-E' (CONTINUED)

SCALE: 1/8" = 1'-0"



SECTION 'H-H'

SCALE: 1/8" = 1'-0"



SECTION 'H-H' (CONTINUED)

REFERENCE DWGS.:

EQUIPMENT ARRANGMT. PLAN	8618-X-95166
EQUIPMENT ARRANGEMENT SECTS. SH. 1	8618-Y-95167
EQUIPMENT ARRANGEMENT SECTS. SH. 2	8618-Y-95168
EQUIPMENT ARRANGEMENT SECTS. SH. 3	8618-X-90537
EQUIPMENT ARRANGEMENT SECTS. SH. 4	8618-Y-90562
EQUIPMENT ARRANGEMENT SECTS. SH. 5	8618-X-90535
EQUIPMENT ARRANGMT. PLAN-POSN. V81/BUS "A" EXP.	8618-X-90535
EQUIPMENT B.O.M.	8618-X-95170
EQUIPMENT B.O.M., CONTINUED	8618-Z-90538
EQUIPMENT B.O.M., CONTINUED	8618-Z-90563
EQUIPMENT DETAILS, MISCELLANEOUS	8618-Y-95169

AS-BUILT

DRAWN 011602 J. SHELTON	EQUIPMENT ARRANGEMENT SECTIONS	
CHKD.	SHEET 3	
NOT CHKD.	345 KV SWITCHYARD	
SUPV. 6-12-02	FSAR FIGURE 8.2-11	
S.A. HELD	CALLAWAY SWITCHYARD	
APPRO. 6-13-02	LOCATION 819	CLASS 07020
B. LYNCH	ST. LOUIS, MO.	REV. 2
UNION ELECTRIC COMPANY	8618-X-90536	

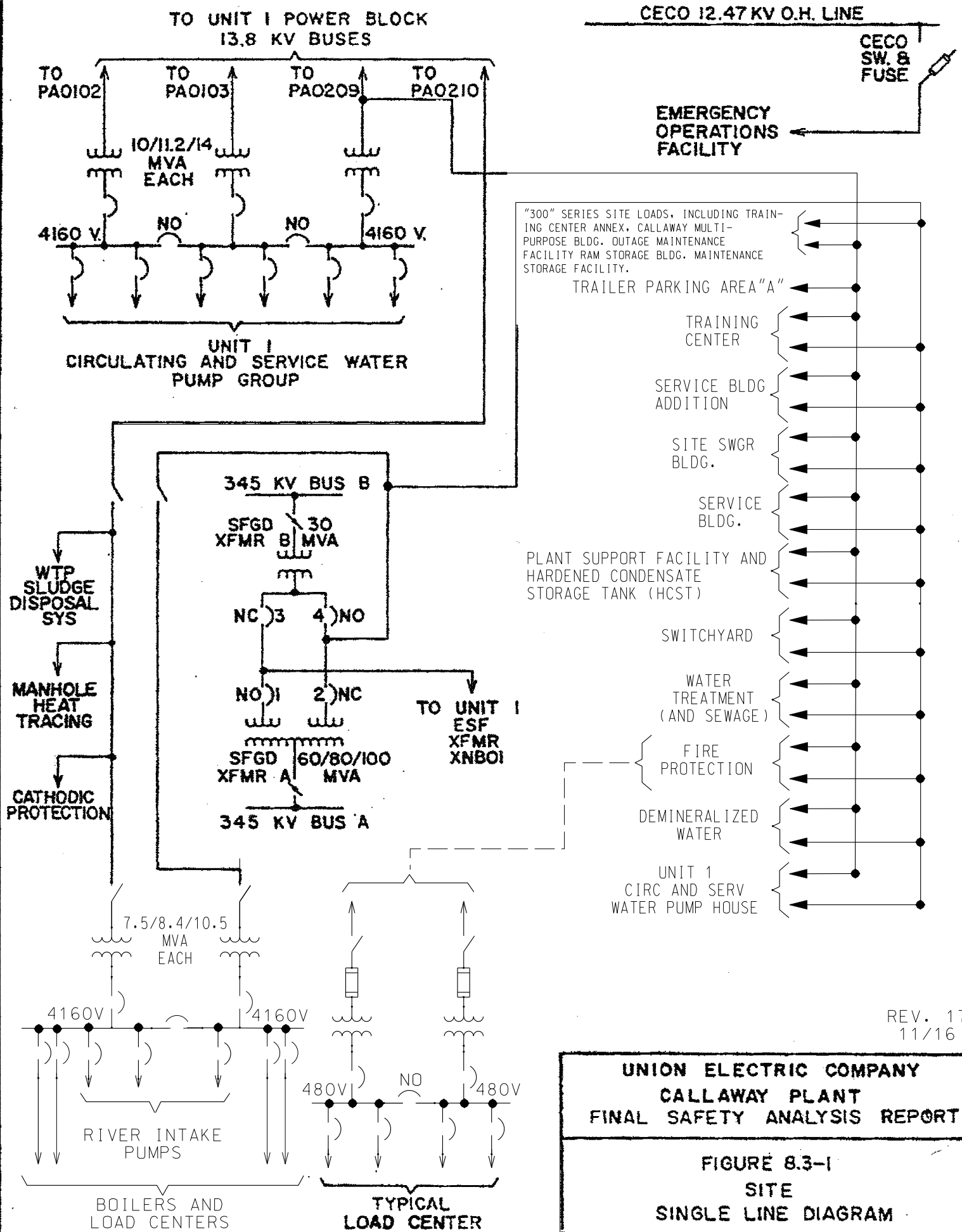


Figure 8.3-1B has been deleted