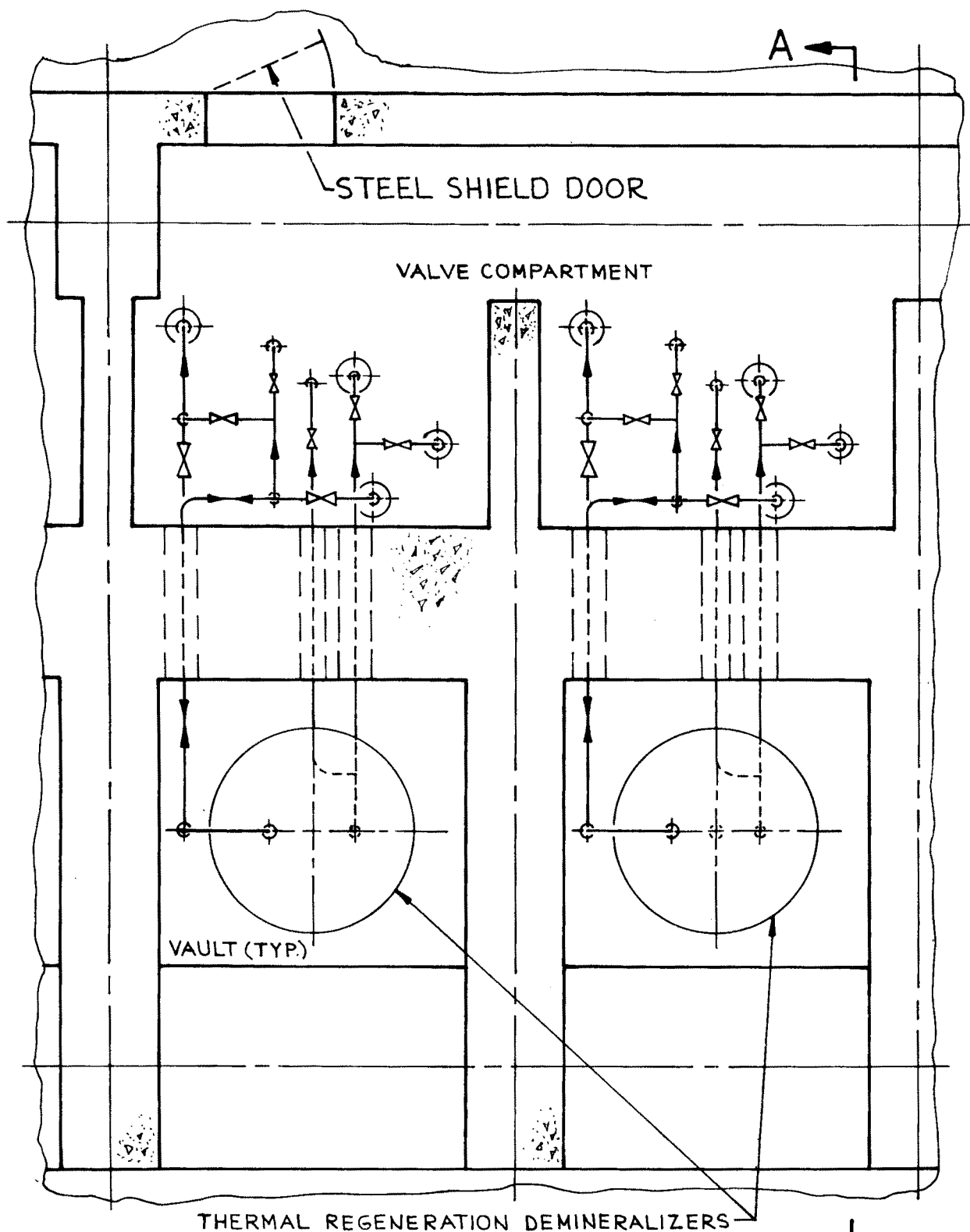


CALLAWAY PLANT

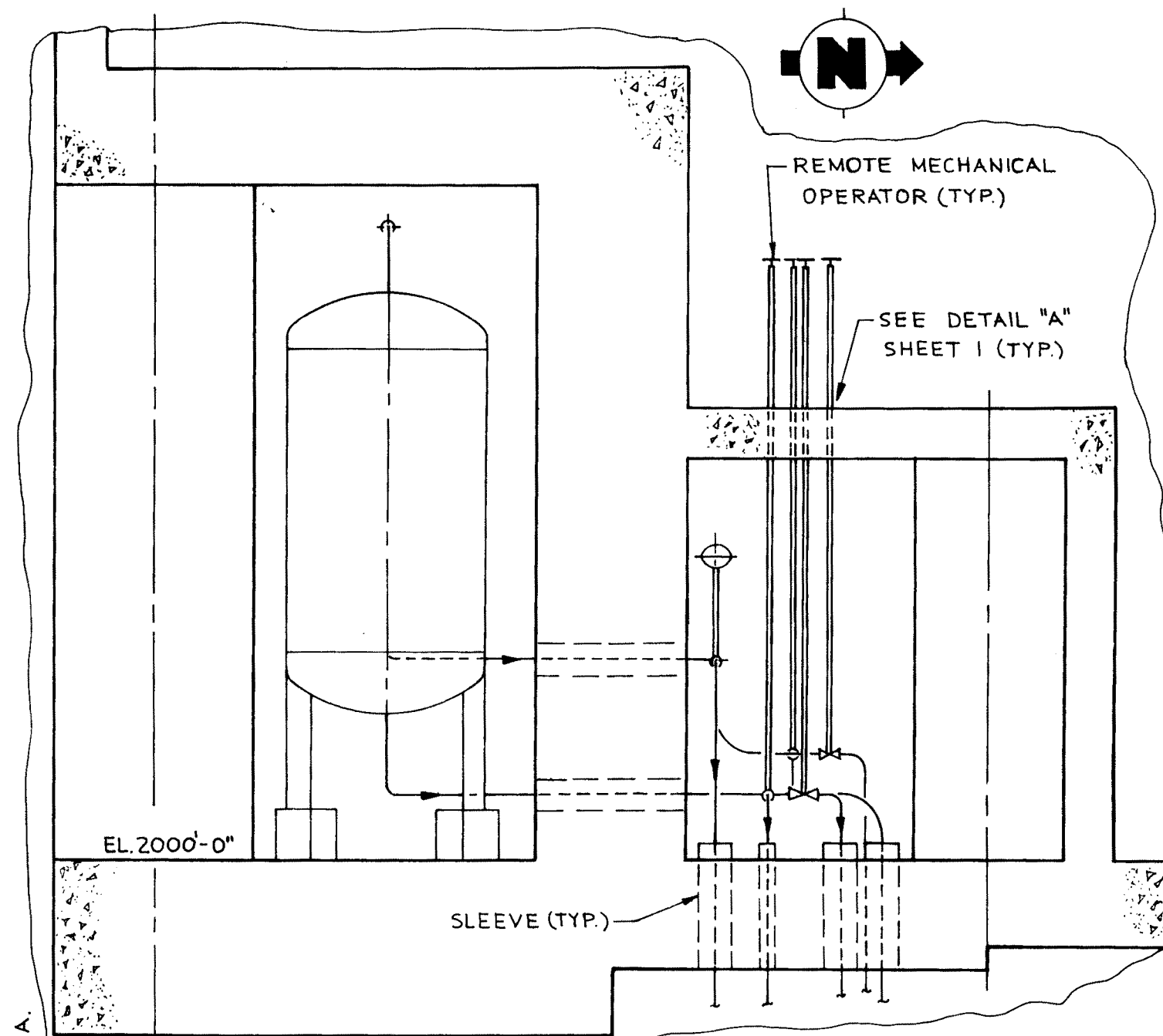
FIGURE 12.2-1

**OLD STEAM GENERATOR STORAGE FACILITY
GENERAL LAYOUT**

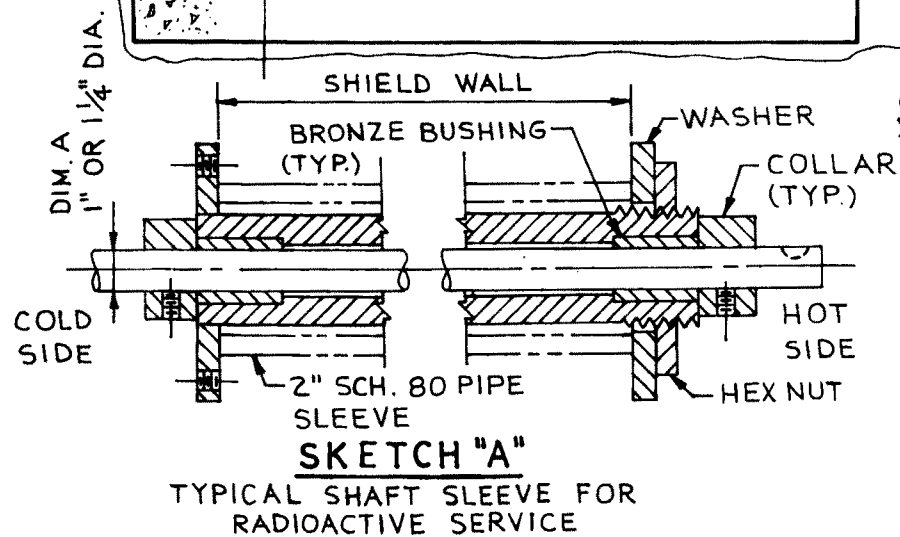
REV. 0 9/14



PLAN VIEW AUX. BLDG.
DEMINERALIZER AREA EL. 2000'-0"



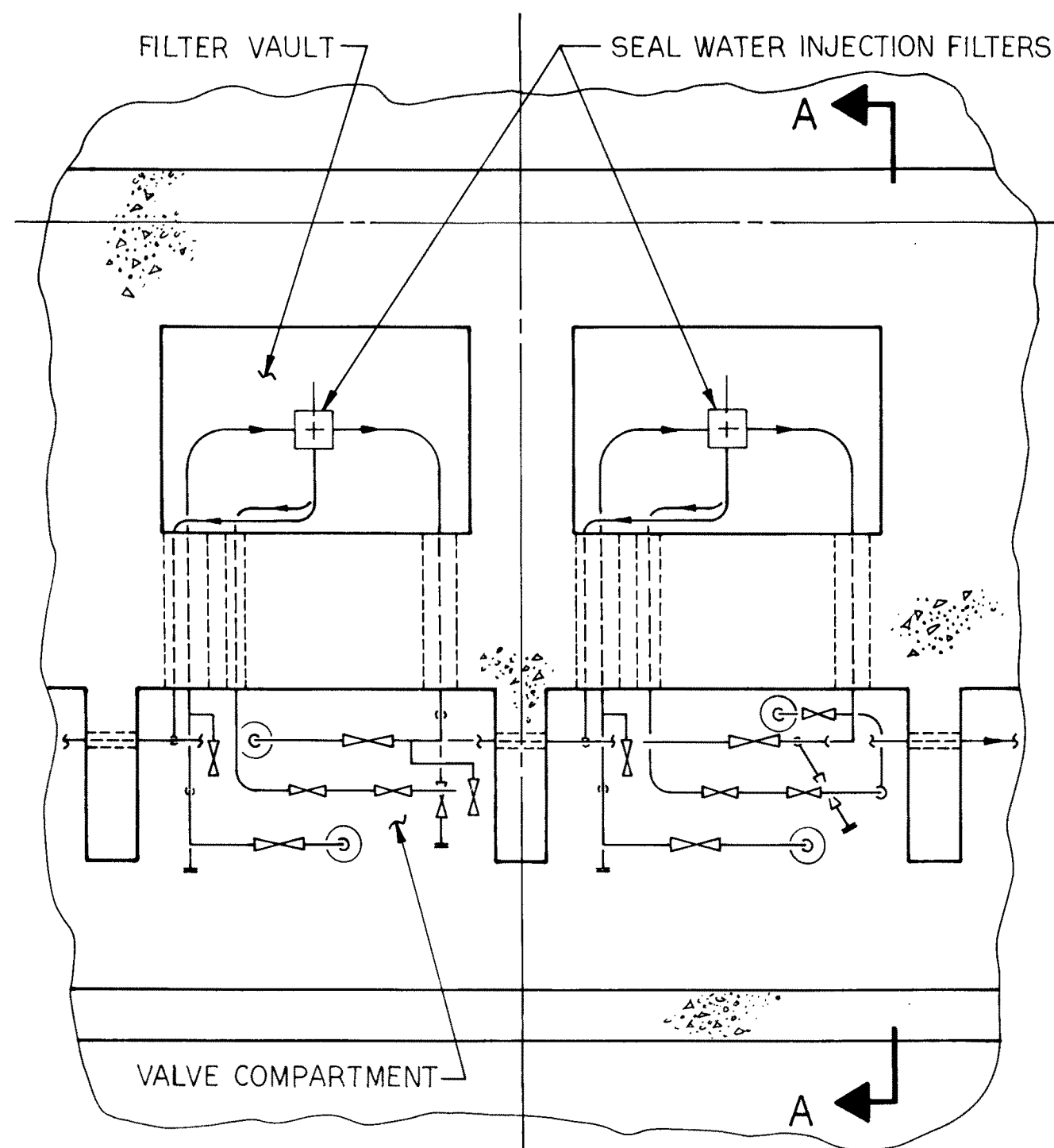
SECTION "A-A"



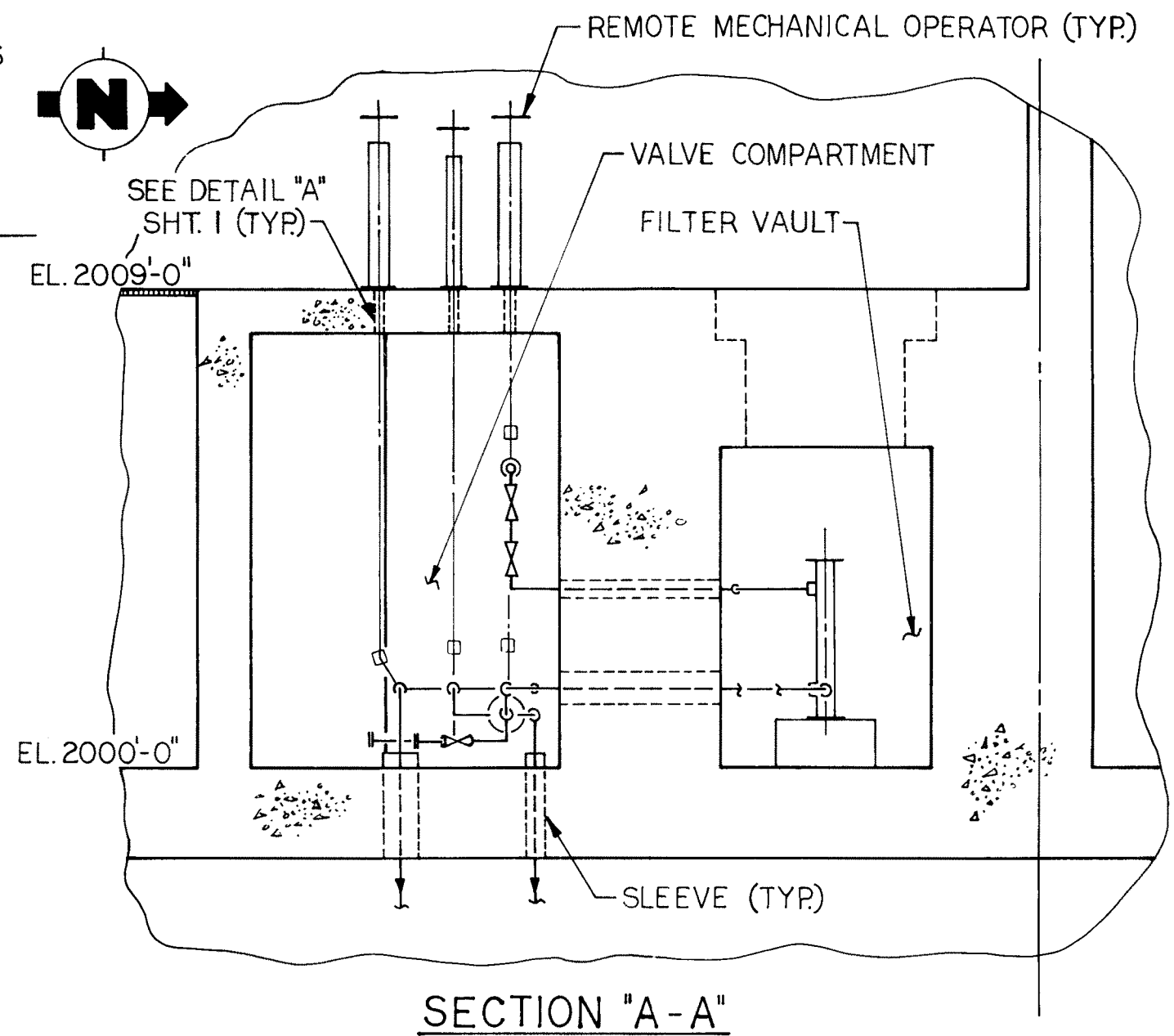
SKETCH "A"
TYPICAL SHAFT SLEEVE FOR
RADIOACTIVE SERVICE

Rev. OL-0
6/86

| CALLAWAY PLANT |
|--|
| FIGURE 12.3-1 |
| TYPICAL VALVE COMPARTMENT ARRANGEMENT |
| SHEET 1 |

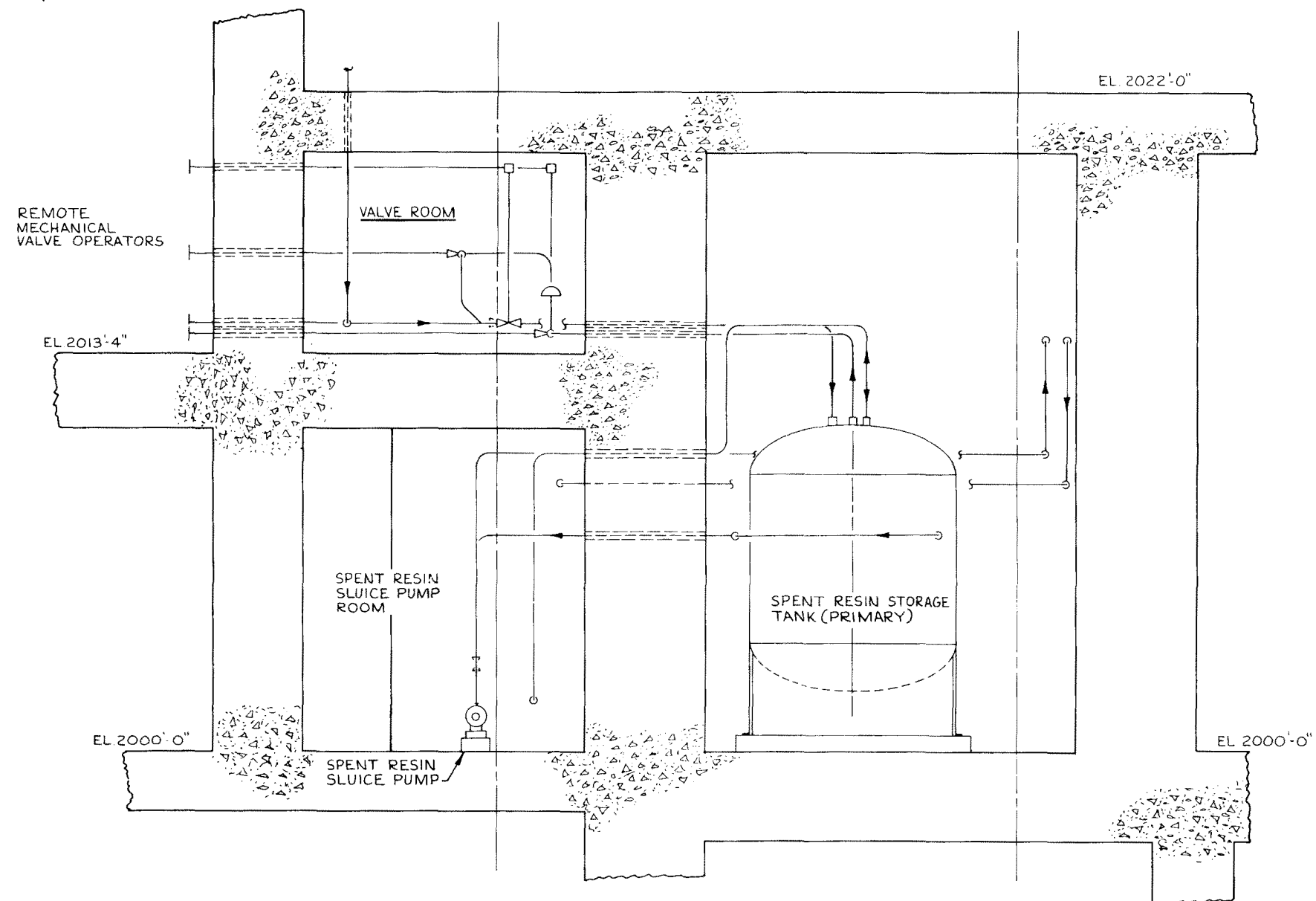
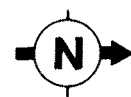
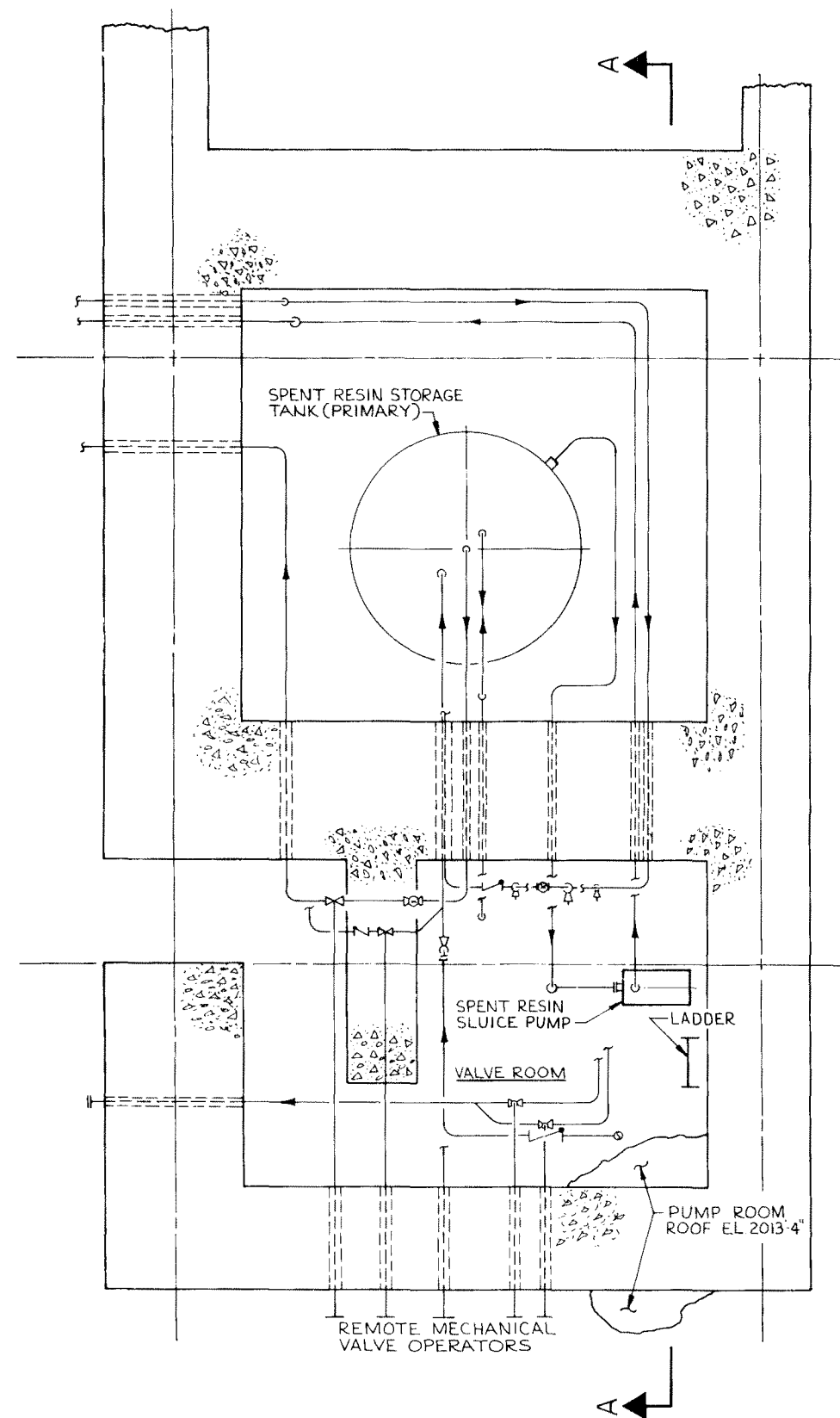


PLAN VIEW AUX. BLDG.
FILTER AREA EL. 2000'-0"

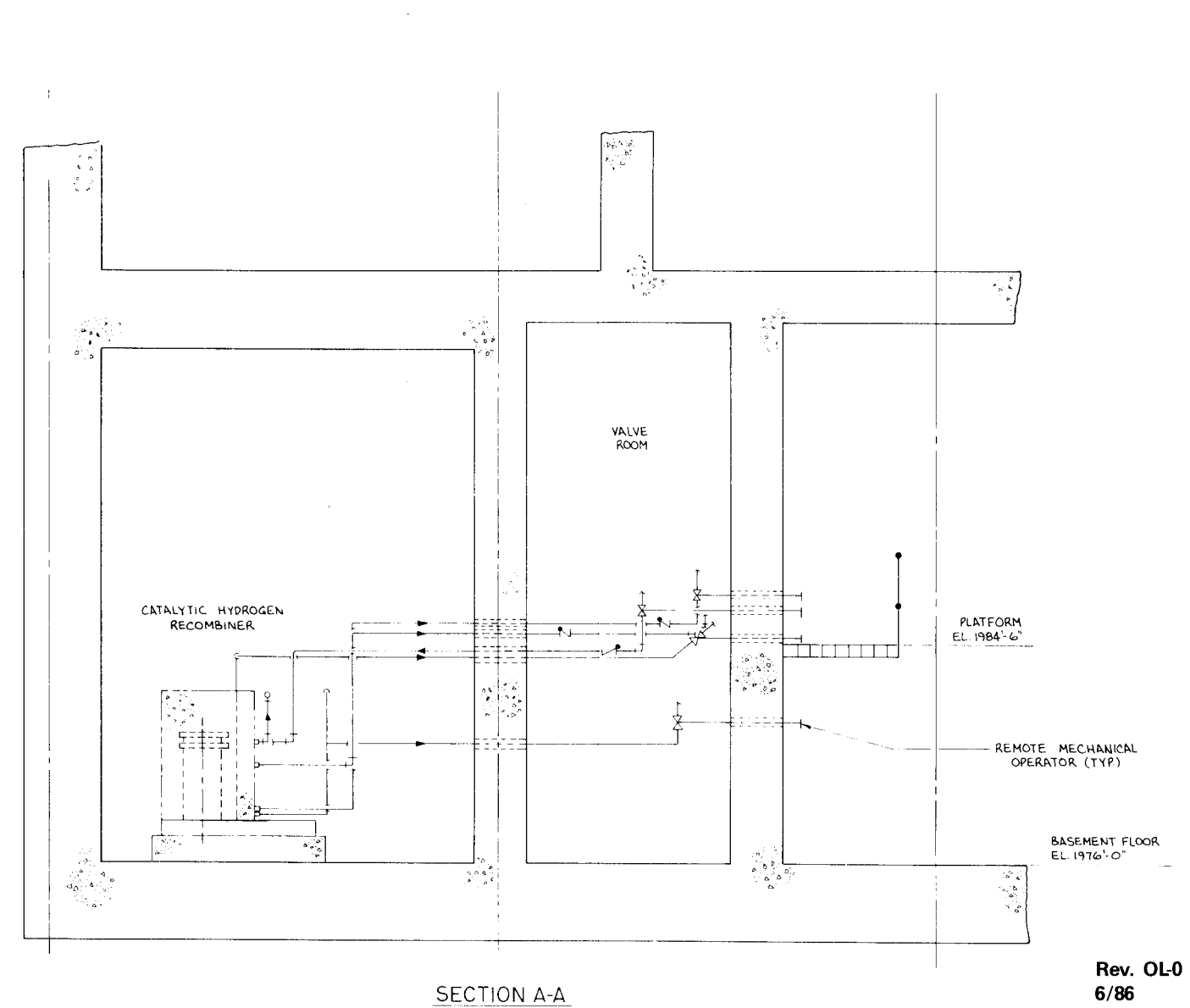
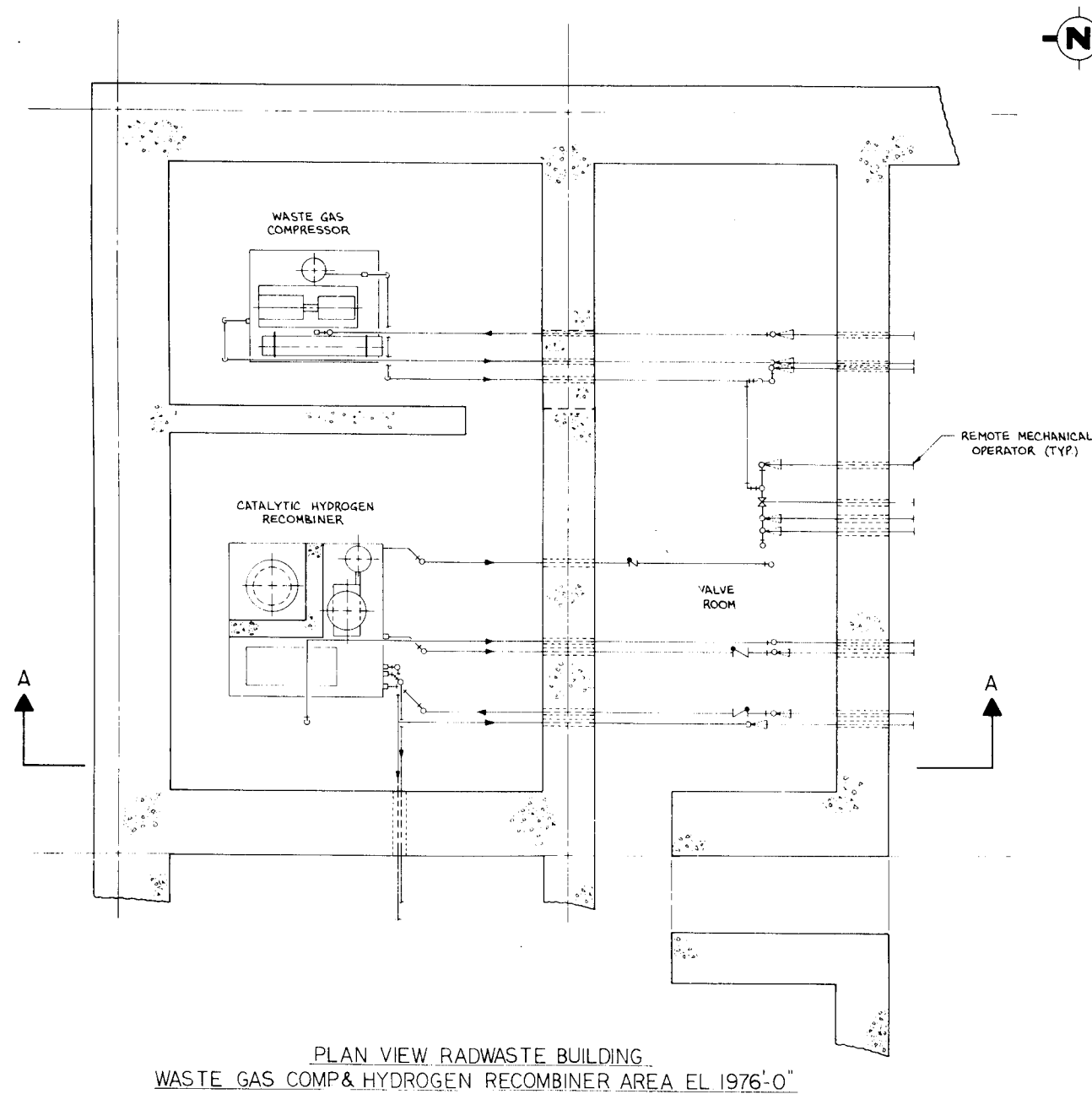


Rev. OL0
6/86

| CALLAWAY PLANT |
|--|
| FIGURE 12.3-1 |
| TYPICAL VALVE COMPARTMENT ARRANGEMENT |
| SHEET 2 |

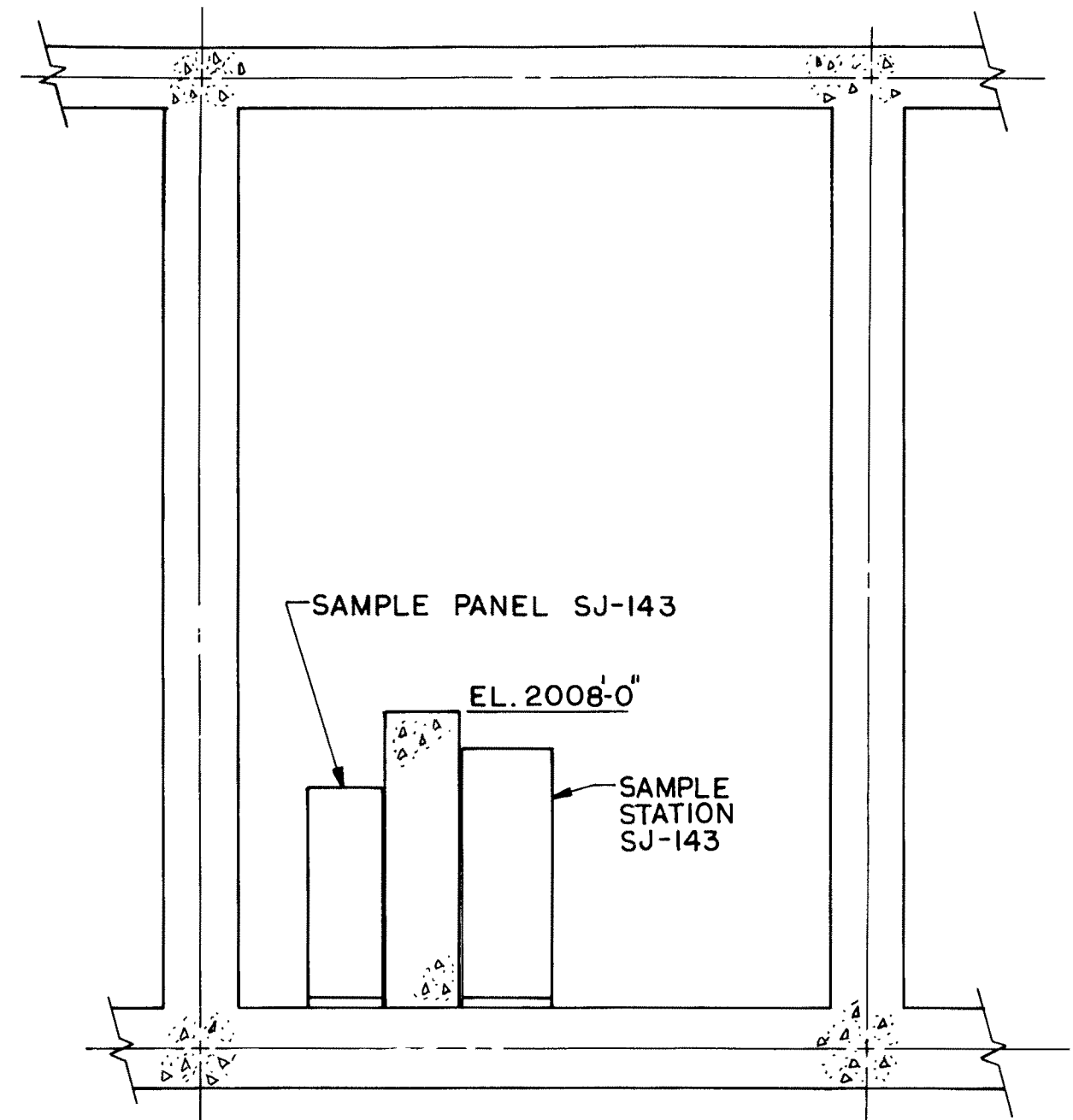
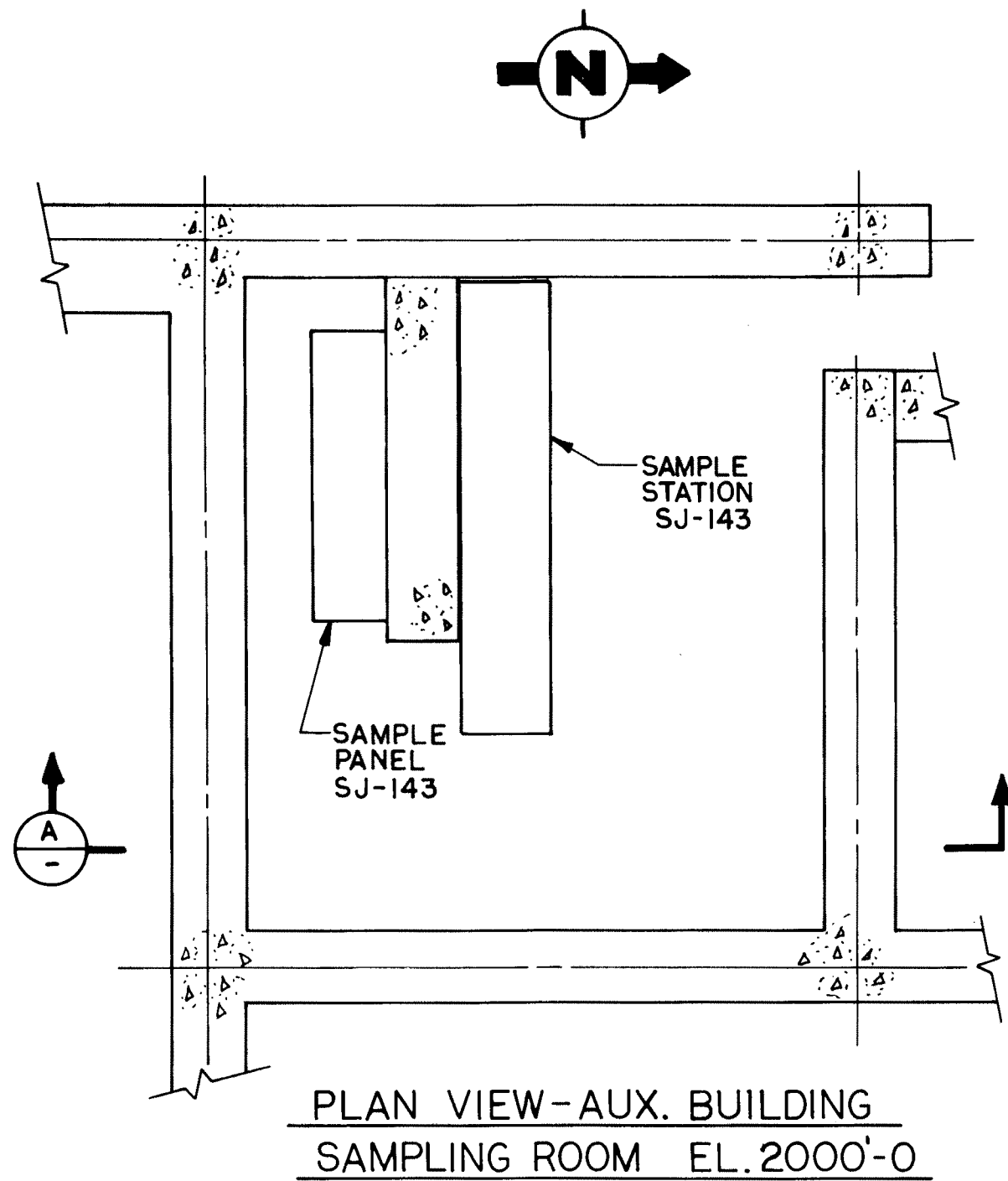


| |
|--|
| Rev. OL-0 6/86 |
| CALLAWAY PLANT |
| FIGURE 12.3-1 |
| TYPICAL VALVE COMPARTMENT ARRANGEMENT |
| SHEET 3 |



Rev. OL-0
6/86

| |
|--|
| CALLAWAY PLANT |
| FIGURE 12.3-1 |
| TYPICAL VALVE COMPARTMENT ARRANGEMENT |
| SHEET 4 |



SECTION A

Rev. OL-0
6/86

| CALLAWAY PLANT |
|--|
| FIGURE 12.3-1 |
| TYPICAL VALVE COMPARTMENT ARRANGEMENT |
| SHEET 5 |

FSAR Figure 12.3-2 is withheld per RIS 2015-17

H

G

F


E

D

M

B

A

| | | | | | |
|---|---------|---|---------------------|-----|----------------|
| 10 | 020410 | INCRP. MP 07-0066, FCN-24. REMOVE ROOM 3203 FROM LEGEND. | MAL | TJC | TWS |
| 9 | 041905 | INCRP. RFR 22941A. | MAL | RLW | TWS |
| 8 | 082201 | INCRP. MP 00-1007 FCN-15. | JHK | MAL | AMR |
| 7 | 051101 | INCRP. MP 00-1007 FCN-07 | RLW | MAL | AMR |
| REV DATE | | REVISIONS | DRAWNCHKDAPPD | | |
| BECHTEL | | | | | |
| GAITHERSBURG, MARYLAND | | | | | |
| SNUPPS | | | | | |
| RADIATION ZONES-NORMAL OPERATION | | | | | |
| EL. 1974'-0" | | | | | |
| FSAR FIGURE 12.3.2 SHEET 1 | | | | | |
| AS-BUILT | | | UTILITY DRAWING NO. | | REV |
| | | | | | |
|  | JOB NO. | | BECHTEL DRAWING NO. | | REV |
| | 10466 | | A-2701 | | 10 |
| DRAWING APPLICABLE TO UNITS | | | 2 | 1 | 94x44 72" SIZE |

FSAR Figure 12.3-2 is withheld per RIS 2015-17

A-2701

8

7

6

5

4

3

2

1

FSAR Figure 12.3-2 is withheld per RIS 2015-17

| | | | | | | |
|--|---------------------|--|-----------|-------|------|------|
| | 011116 | INCORPORATE CAR 201405515. | CNS | RLW | N/A | DME |
| | 110904 | INCCRP. RFR-22941A | TJC | MAL | N/A | TWS |
| | 11/22/22 | INITIAL ISSUE; SUPERCEDES A-0702 REV. 1; REFLECTS TURNOVER TO U.E. | S | B | HP | HP |
| NO. | DATE | REVISIONS | BY | CHK | DES | ENGR |
| SCALE 1/16" | | DATE 11-19-75 | DESIGNED: | DRAWN | CHKD | ENGR |
| BECHTEL GAITHERSBURG, MARYLAND | | | | | | |
| SNUPPS | | | | | | |
| RADIATION ZONES-NORMAL OPERATION EL. 2000'-0" | | | | | | |
| FSAR FIGURE 12.3-2 SHEET 2 | | | | | | |
| AS-BUILT | | | | | | |
| | BECHTEL DRAWING NO. | | REV | | | |
| DRAWING APPLICABLE TO UNITS | | A-2702 | | 8 | | |

FSAR Figure 12.3-2 is withheld per RIS 2015-17

FSAR Figure 12.3-2 is withheld per RIS 2015-17

H

G

F

E

D

C

B

A

| | | | | | | |
|----------------------------------|-----------|---|----------|---------------------|----------|----------|
| 4 | 041905 | INCORP. RFR 22941A. | MAL | RLW | N/A | TWS |
| 3 | 051100 | INCORP. MP 97-1006 FCN-10. | JHK | MAL | N/A | AMR |
| 2 | 101399 | INCORP. MP 97-1016A. | MAL | EWM | N/A | AMR |
| 1 | 112897 | INCORPORATES MP 93-2031 | RAM | HLP | N/A | AMR |
| 0 | 081997 | INITIAL ISSUE ISSUE PER EDP-ZZ-04024 REFLECTS TURNOVER SUPERCEDES A-0703 REV 1 | RAM | HLP | N/A | AMR |
| NO. DATE | REVISIONS | | BY | CHK | DESIGNED | APPROVED |
| SCALE 1/8" = 1'-0" | | DATE 11-15-15 | DESIGNED | DRAWN JAM/HIS | | |
| BECHTEL | | | | | | |
| GATHERSBURG, MARYLAND | | | | | | |
| SNUPPS | | | | | | |
| RADIATION ZONES-NORMAL OPERATION | | | | | | |
| EL. 2026'-0" | | | | | | |
| FSAR FIGURE 12.3-2 SHEET 3 | | | | | | |
| AS-BUILT | | | | UTILITY DRAWING NO. | | REV |
| JOB NO. | | | | BECHTEL DRAWING NO. | | REV |
| 10466 | | | | A-2703 | | 4 |
| REVISIONS APPLICABLE TO SHEET | | | | | | |

FSAR Figure 12.3-2 is withheld per RIS 2015-17

8

7

6

5

4

3

2

1

FSAR Figure 12.3-2 is withheld per RIS 2015-17

H

G

F

E

D

C

B

A

| | | | | | | |
|---------------------|----------------|---|---------------|-------|-------------|-------------|
| 3 | 120117 | INCORP. CR 201704661 ACTION 1. | TJC | MAL | N/A | DME |
| 2 | 110904 | INCORPORATE RFR-22941A | TJC | MAL | N/A | TWS |
| 1 | 031004 | INCORPORATE MINOR CHANGE ZAR 200306834 | RLW | MAL | N/A | TWS |
| 0 | 021501 | INCORP. MP 00-2010A. | JHK | MAL | N/A | AMR |
| 9 | 051100 | INCORP. MP 97-1006 FCN-10. | JHK | MAL | N/A | AMR |
| 8 | 101399 | INCORP. MP 97-1016A. | MAL | ENM | N/A | AMR |
| 7 | 040898 | INCORP. CMP 96-1012A | DJB | RLW | N/A | JHK |
| NO. | DATE | REVISIONS | BY | CHK | DES ENGR | PRO ENGR |
| SCALE: 1/8" = 1'-0" | DATE: 11/19/75 | DESIGNED: | DRAWN: KCH/MS | CHKD: | ENGR: | APPD: |

| | | | |
|--|--|---------------------|--|
| BECHTEL GAITHERSBURG, MARYLAND | | | |
| SNUPPS | | | |
| RADIATION ZONES - NORMAL OPERATION EL. 2047'-6" | | | |
| FSAR FIGURE 12.3-2 SHEET 4 | | | |
| AS-BUILT | | UTILITY DRAWING NO. | |
| JOB NO. | | BECHTEL DRAWING NO. | |
| 10466 | | A-2704 | |
| REV. | | 13 | |
| DRAWING APPLICABLE TO UNITS | | | |

FSAR Figure 12.3-2 is withheld per RIS 2015-17

A-2705

FSAR Figure 12.3-2 is withheld per RIS 2015-17

| | | | | | | |
|---|----------------|--|--------------------|-------|------|------|
| | 110904 | INCORPORATE RFR-22941A | TJC | MAL | N/A | TWS |
| | 040101 | INITIAL ISSUE; REFLECTS TURNOVER TO UE, SUPERCEDES A-0705, REV.1. INCCRP. RFR 17358A. | MAL | RLW | N/A | RAM |
| NO. | DATE | REVISIONS | BY | CHK | DES | PROJ |
| | | | | | SUPV | ENGR |
| SCALE: 1/8"=1'-0" | DATE: 11/19/75 | DESIGNED: | DRAWN: | CHIEF | | |
| BECHTEL | | | | | | |
| GAITHERSBURG, MARYLAND | | | | | | |
| SNUPPS | | | | | | |
| RADIATION ZONES FOR NORMAL OPERATION TURBINE BUILDING EL 1983'-0" & EL 2000'-0" | | | | | | |
| FSAR FIGURE 12.3-2 SHEET 5 | | | | | | |
| AS-BUILT | | | UTILITY DRAWING-NO | | REV | |
| JOB NO | | | BECHTEL DRAWING NO | | REV | |
| 10466 | | | A-2705 | | 1 | |
| DRAWING APPLICABLE TO UNITS | | | | | | |

FSAR Figure 12.3-2 is withheld per RIS 2015-17

FSAR Figure 12.3-2 is withheld per RIS 2015-17

H

G

F

E

D

C

B

A

| | | | | | |
|--------------------------------------|--------|--|---------------------|-------|-------|
| 3 | 021215 | INCORPORATE MP 10-0035 FCN-09 | RLW | TJC | DME |
| 2 | 071105 | INCORPORATE MP 03-1017C | EWM | JHK | TWS |
| 1 | 110904 | INCORPORATE RFR-22941A | TJC | MAL | TWS |
| 0 | 060804 | INITIAL ISSUE, REFLECTS TURNOVER TO U.S. SUPERCEDES A-0706 REV. 1. | EWM | JHK | TWS |
| NO. | DATE | REVISION | BY | CHKD | APPR |
| SCALE: 1/8"=1'-0" | DATE | DESIGNED | DRAWN: | CHIEF | ENGR. |
| BECHTEL | | | | | |
| GAITHERSBURG, MARYLAND | | | | | |
| SNUPPS | | | | | |
| RADIATION ZONES FOR NORMAL OPERATION | | | | | |
| TURBINE BUILDING | | | | | |
| EL 2033'-0" & EL 2065'-0" | | | | | |
| FSAR FIGURE 12.3-2 SHEET 6 | | | | | |
| AS-BUILT | | | UTILITY DRAWING NO. | REV | |
| JOB NO. | | | BECHTEL DRAWING NO. | REV | |
| 10466 | | | A-2706 | 3 | |
| DRAWING APPLICABLE TO UNITS | | | 2 | X | X |
| | | | 1 | X | X |

FSAR Figure 12.3-2 is withheld per RIS 2015-17

8

7

6

5

4

3

2

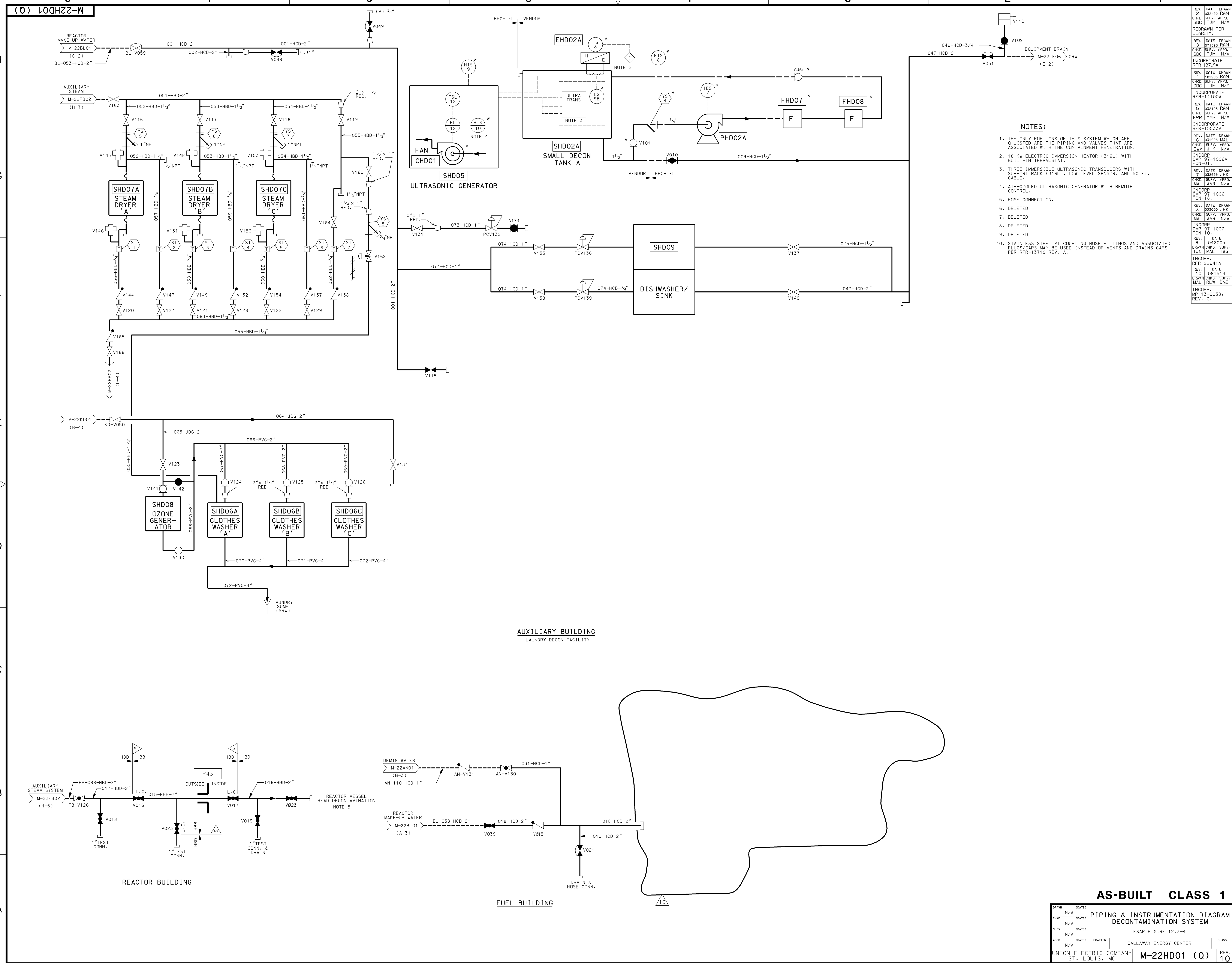
1

FSAR Figure 12.3-3 is withheld per RIS 2015-17

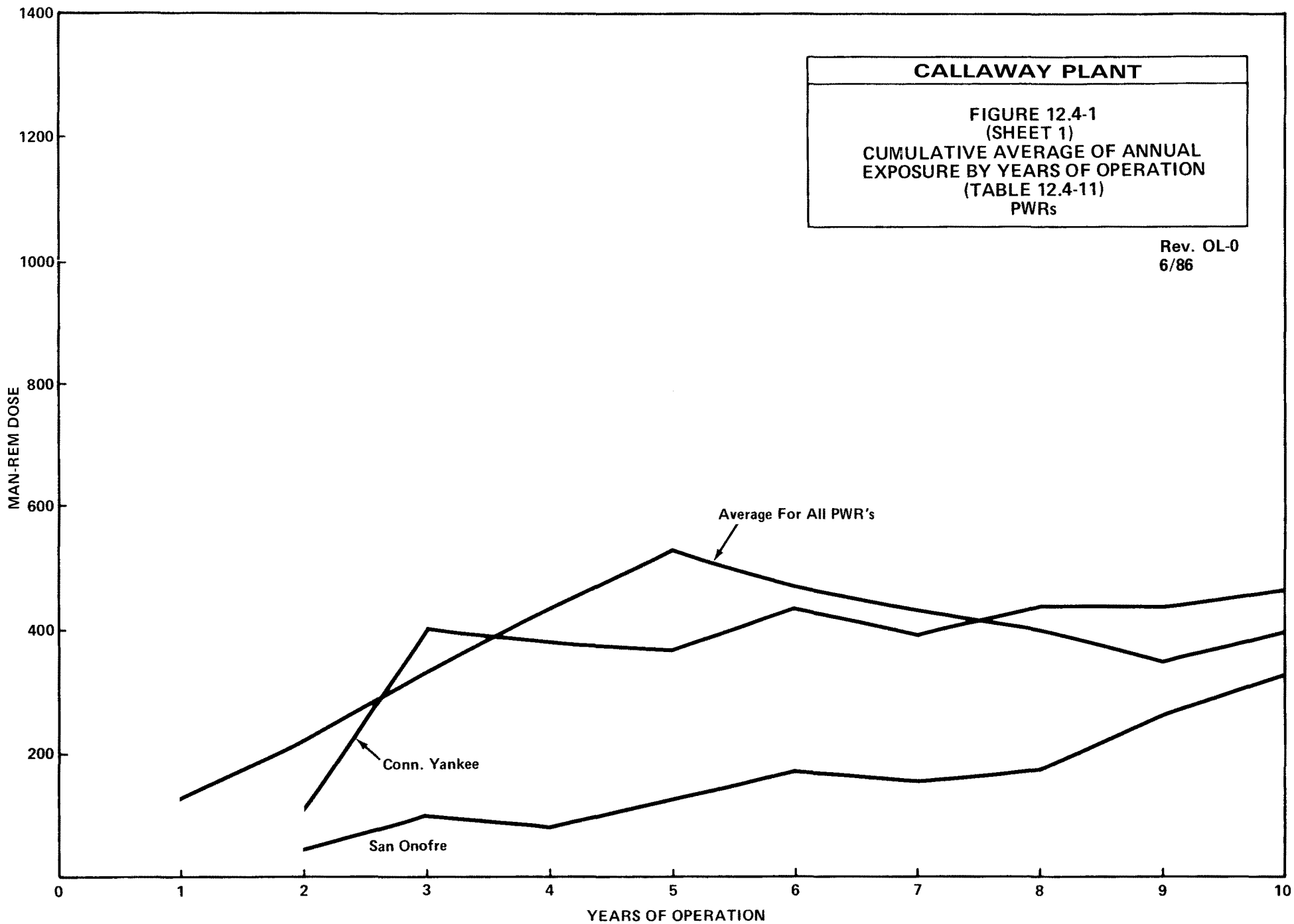
Rev. OL-0
6/86

| CALLAWAY PLANT |
|---|
| FIGURE 12.3-3 CONTROL ROOM ISOMETRIC |

FSAR Figure 12.3-3 is withheld per RIS 2015-17



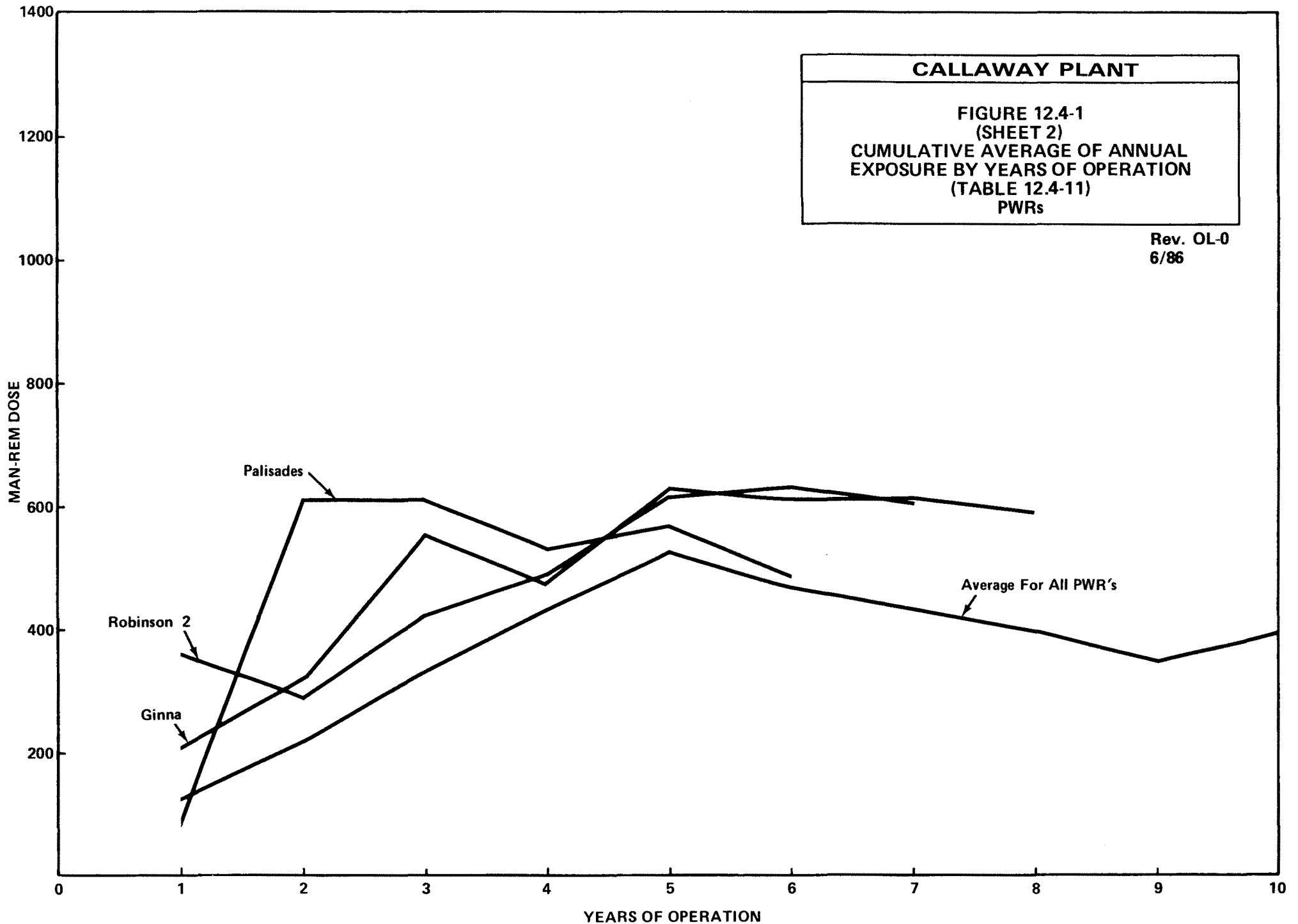
- NOTES:**
1. THE ONLY PORTIONS OF THIS SYSTEM WHICH ARE LISTED ARE THE PIPING AND VALVES THAT ARE ASSOCIATED WITH THE CONTAINMENT PENETRATION.
 2. 18 KW ELECTRIC IMMERSION HEATER (316L) WITH BUILT-IN THERMOSTAT.
 3. THREE IMMERSIBLE ULTRASONIC TRANSDUCERS WITH SUPPORT RACK (316L), LOW LEVEL SENSOR, AND 50 FT. CABLE.
 4. AIR-COOLED ULTRASONIC GENERATOR WITH REMOTE CONTROL.
 5. HOSE CONNECTION.
 6. DELETED
 7. DELETED
 8. DELETED
 9. DELETED
 10. STAINLESS STEEL PT COUPLING HOSE FITTINGS AND ASSOCIATED PLUGS/CAPS MAY BE USED INSTEAD OF VENTS AND DRAINS CAPS PER RFR-13719 REV. A.

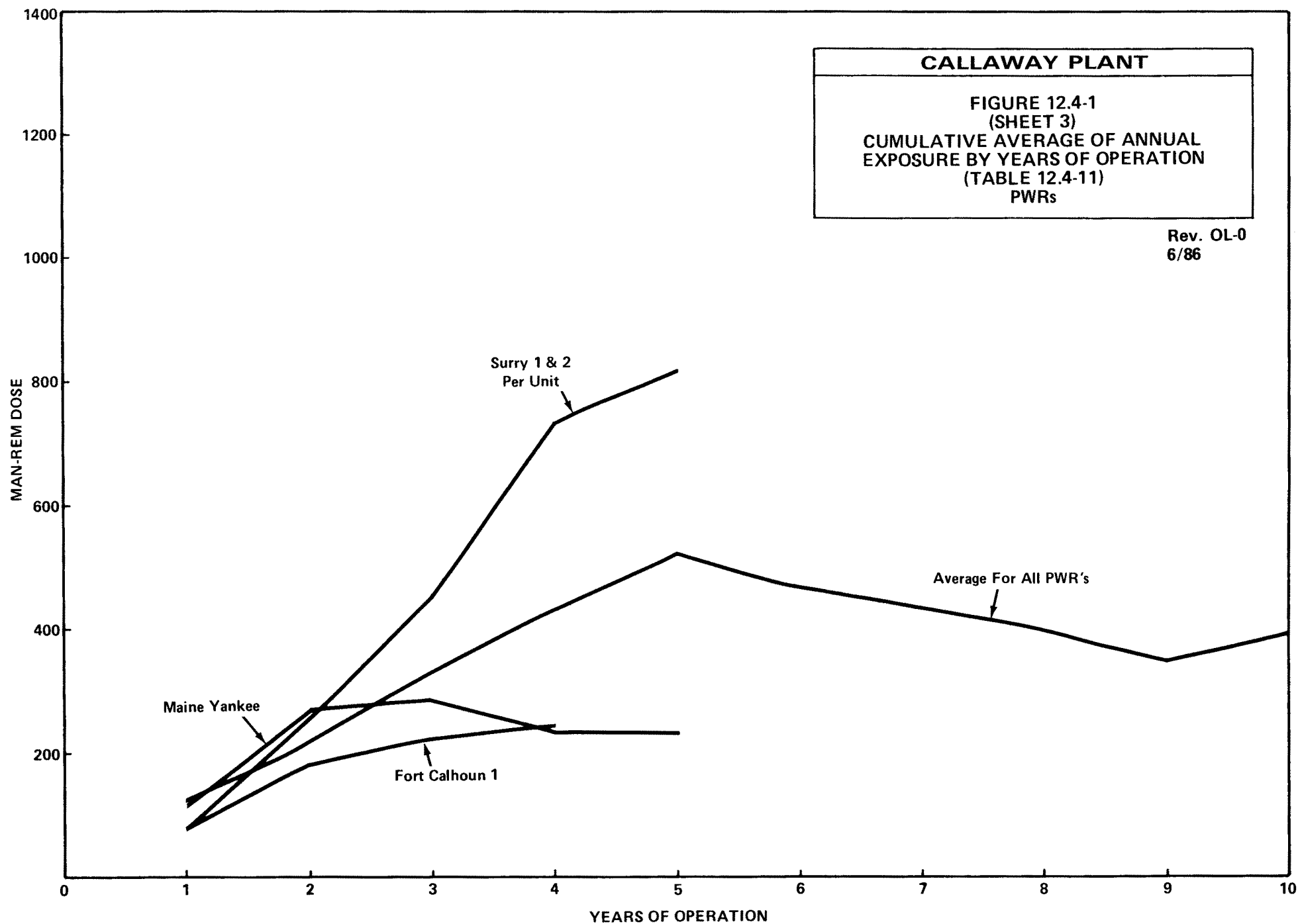


CALLAWAY PLANT

**FIGURE 12.4-1
(SHEET 2)
CUMULATIVE AVERAGE OF ANNUAL
EXPOSURE BY YEARS OF OPERATION
(TABLE 12.4-11)
PWRs**

Rev. OL-0
6/86





CALLAWAY PLANT

**FIGURE 12.4-1
(SHEET 4)
CUMULATIVE AVERAGE OF ANNUAL
EXPOSURE BY YEARS OF OPERATION
(TABLE 12.4-11)
PWRs**

Rev. OL-0
6/86

MAN-REM DOSE

