

ENCLOSURE 2
COLD SHUTDOWN COMPONENTS PROVIDED WITH
DISCONNECT SWITCHES

<u>EQUIPMENT NUMBER</u>	<u>DESCRIPTION</u>	<u>DRAWING NUMBER</u>
M-SIB-P01	LP SAFETY INJECTION PUMP	13-E-SIB-002
J-SIB-UV-615	SHUTDOWN COOLING VALVE	13-E-SIB-007
J-SIB-UV-625	SHUTDOWN COOLING VALVE	13-E-SIB-007
J-SIB-UV-652	SHUTDOWN COOLING VALVE	13-E-SIB-013
J-SIB-UV-654	SHUTDOWN COOLING VALVE	13-E-SIB-014
J-SIB-UV-656	SHUTDOWN COOLING VALVE	13-E-SIB-015
J-SIB-UV-668	SHUTDOWN COOLING VALVE	13-E-SIB-019
J-SIB-HV-307	SHUTDOWN COOLING VALVE	13-E-SIB-023
J-SIB-HV-695	SHUTDOWN COOLING VALVE	13-E-SIB-024
J-SIB-HV-689	SHUTDOWN COOLING VALVE	13-E-SIB-025
J-SIB-HV-692	SHUTDOWN COOLING VALVE	13-E-SIB-026
J-SIB-HV-658	SHUTDOWN COOLING VALVE	13-E-SIB-027
J-SIB-HV-690	SHUTDOWN COOLING VALVE	13-E-SIB-028
J-SIB-HV-693	SHUTDOWN COOLING VALVE	13-E-SIB-029
J-SIB-HV-694	SHUTDOWN COOLING VALVE	13-E-SIB-030
J-SIB-HV-696	SHUTDOWN COOLING VALVE	13-E-SIB-031
J-SIB-HV-613	SIT VENT VALVE	13-E-SIB-052
J-SIB-HV-623	SIT VENT VALVE	13-E-SIB-052
J-SIB-HV-633	SIT VENT VALVE	13-E-SIB-053
J-SIB-HV-643	SIT VENT VALVE	13-E-SIB-053
J-CHN-UV-501	VCT SUPPLY VALVE	13-E-CHB-002
J-CHN-HV-536 (V-141)	RWT GRAVITY FEED VALVE	13-E-CHB-072
J-SIB-HS-18A	SIT VENT VALVES PWR SUPPLY	13-E-SIB-054

ENCLOSURE 1
HOT SHUTDOWN COMPONENTS PROVIDED WITH
DISCONNECT SWITCHES

EQUIPMENT NUMBER	DESCRIPTION	DRAWING NUMBER
J-SGB-HV-185	STEAM GEN 2 LINE 1 ATM DUMP VALVE	13-E-SGB-020
J-SGB-HV-178	STEAM GEN 1 LINE 2 ATM DUMP VALVE	13-E-SGB-022
J-AFB-HV-30	AUX FW REG VALVE PUMP B TO SG1	13-E-AFB-003
J-AFB-HV-31	AUX FW REG VALVE PUMP TO SG2	13-E-AFB-003
J-AFB-UV-34	AUX FW ISO VALVE PUMP B TO SG1	13-E-AFB-005
J-AFB-UV-35	AUX FW ISO VALVE PUMP B TO SG2	13-E-AFB-005
M-AFB-P01	AUX FW PUMP MOTOR DRIVEN	13-E-AFB-001
M-DGB-H01	DIESEL ENGINE CONTROL	13-E-DGB-007
M-DGB-H01	DIESEL GEN METERING & RELAYING	13-E-PEB-002
M-DGB-H01	DIESEL GEN TRIPPING & VOLT REG	13-E-PEB-003
M-SPB-P01	ESSENTIAL SPRAY POND PUMP	13-E-SPB-001
M-EWB-001	ESSENTIAL COOLING WATER PUMP	13-E-EWB-001
M-ECB-E01	ESSENTIAL CHILLER	13-E-ECB-001
E-PBB-S04K	4.16KV BUS NORMAL SOURCE	13-E-PBB-001
E-PBB-S04L	4.16KV BUS ALTERNATE SOURCE	13-E-PBB-002
E-PEB-G02	DIESEL GENERATOR BREAKER	13-E-PEB-001
E-PGB-L32	4.16KV SUPPLY BREAKER	13-E-PGB-001
E-PGB-L32	480V MAIN BREAKER	13-E-PGB-006
E-PGB-L34	4.16KV SUPPLY BREAKER	13-E-PGB-002
E-PGB-L34	480V MAIN BREAKER	13-E-PGB-007
E-PGB-L36	4.16KV SUPPLY BREAKER	13-E-PGB-003
E-PGB-L36	480V MAIN BREAKER	13-E-PGB-008
M-RCE-B18, B10, A05	PRESSURIZER BACKUP HEATERS	13-E-RCB-010
M-CHB-P01	CHARGING PUMP	13-E-CHB-025
J-CHB-HV-203	PRESSURIZER AUX SPRAY VALVE	13-E-CHB-039
J-CHB-UV-515	LETDOWN ISOLATION VALVE	13-E-CHB-031
J-CHB-UV-505	RCP SEAL BLEED-OFF ISO VALVE	13-E-CHB-015
M-HJB-Z03	ESF SWGR RM ESS AHU	13-E-HJB-006
M-HJB-J01A, B	BAT ROOMS ESS EXH FANS	13-E-HJB-023
M-HDB-J01	DG ESS EXH FAN	13-E-HDB-001
M-DFB-P01	DG FUEL OIL TRANSFER PUMP	13-E-DFB-001
E-PKB-F12	BATTERY B BREAKER	13-E-PKB-001
E-PKD-F14	BATTERY D BREAKER	13-E-PKB-002
E-PKB-H12	BATTERY CHARGER B	13-E-PKB-004
E-PKD-H14	BATTERY CHARGER D	13-E-PKB-004
E-PKB-H16	BATTERY CHARGER BD	13-E-PKB-004

DocId: 50-528/529/530
 Control: 8204190292
 Date: 82/04/12
 REGULATION DOCUMENT
 REGULATION DOCUMENT



PALO VERDE NUCLEAR GENERATING STATION UNITS 1, 2 & 3
DRAWING CHANGE NOTICE (DCN)
JOB NO. 10407

UNIT	ASSIGNEE *			
A	C	S	O	
1	C	S	O	
2	C	S	O	
3	C	S	O	

CIRCLE APPLICABLE UNIT(S) AND ASSIGNEE
* C - CONSTRUCTION, S - STARTUP, O - OWNER

DRAWING NO.	SHEET NO.	REV.	DCN NO.
13-E-CHB-026		4	7

JOB NO. 10407 PAGE 1 OF 1

DATE: 02/17/82 BY: G. KLEYMAN

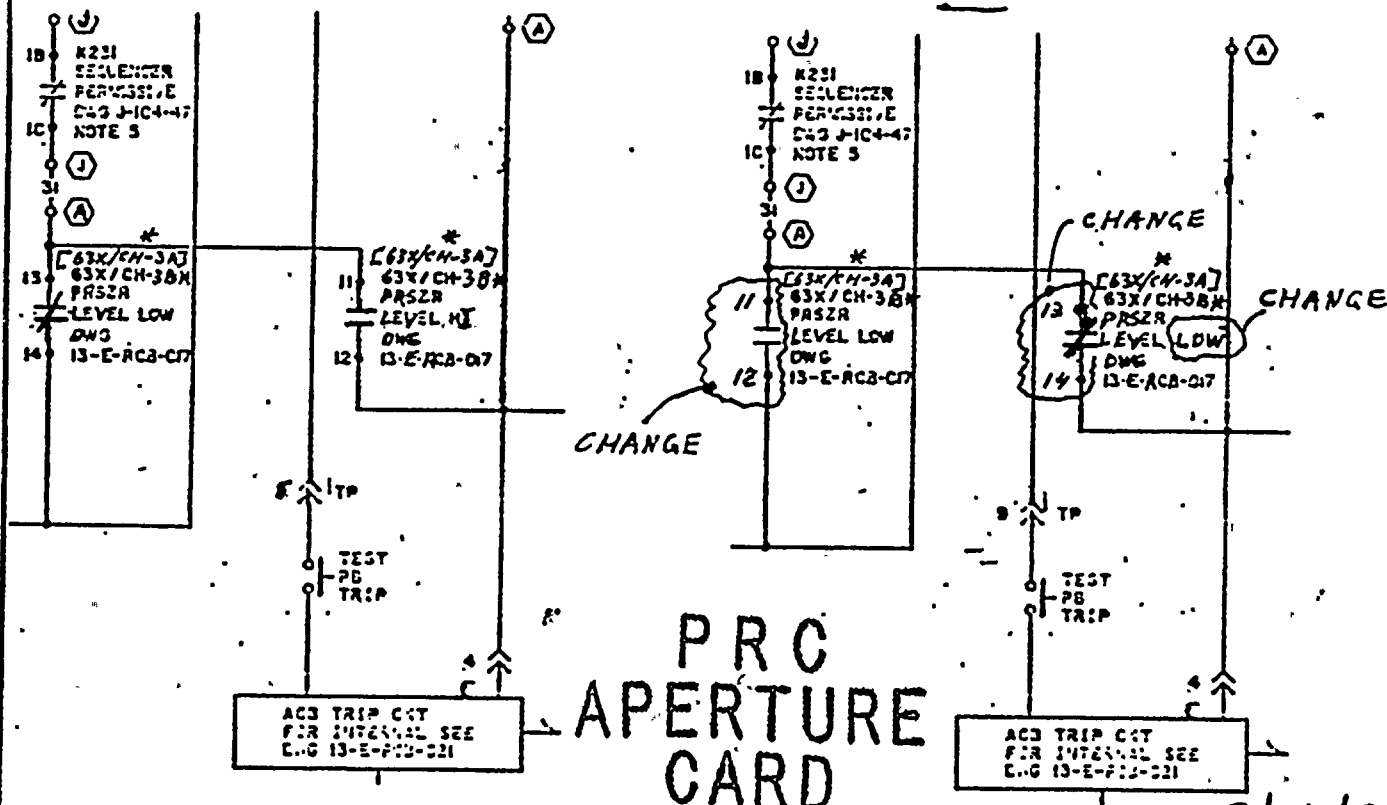
CHANGE REQUESTED BY: ☐ CLIENT ☒ ENGINEERING ☐ FIELD ☒ SUPPLIER/CONTRACTOR

REASON FOR CHANGE: PER VENDOR CHANGE REQUEST (REF: C-E LETTER V-CE-15887, FEB. 1, 1982)

DESCRIPTION OF CHANGE AT LOCATIONS: F-5 & F-6 CHANGE DIAG-
RAM AS INDICATED BY:

WAS:

IS:



PRC
APERTURE
CARD

2/26/82

MATERIAL PROCUREMENT RESPONSIBILITY

☐ BECHTEL OFFICE ☐ SUPPLIER/CONTRACTOR
☐ BECHTEL FIELD ☒ NONE REQUIRED

AFFECTED
PURCHASE ORDERS

NONE

PM OR MR PREPARED
FOR DCN CHANGE

YES NO

✓

GROUP SUPERVISOR: [Signature] DATE: 2/24/82
PROJECT ENGINEER: [Signature] DATE: 2/24/82
NUCLEAR GROUP SUPERVISOR (IF REQUIRED): N/A
FOAE (O-LISTED PAID'S AND SINGLE LINE DWGS): N/A

REMARKS: NO ADDITIONAL CIRCUITS, EE-580 TERMINATIONS
NEED REWORK, SUSS-1CH04; T/O-09/02/81

ADDITIONAL DISTRIBUTION: ☐ PROJECT PROCUREMENT MANAGER ☐ COST TREND ENGINEER

PROC
APERTURE
CARD



PALO VERDE NUCLEAR GENERATING STATION UNITS 1, 2 & 3
DRAWING CHANGE NOTICE (DCN)
JOB NO. 10407

UNIT	ASSIGNEE *			
A 1 2 3	C C C	S S S	O O O	

CIRCLE APPLICABLE UNIT(S) AND ASSIGNEE
* C - CONSTRUCTION, S - STARTUP, O - OWNER

DRAWING NO.	SHEET NO.	REV.	DCN NO.
13-E-CHB-025		4	7

JOB NO. 10407 PAGE 1 OF 1

DATE: 02/17/82 BY: E. KLEYMAN

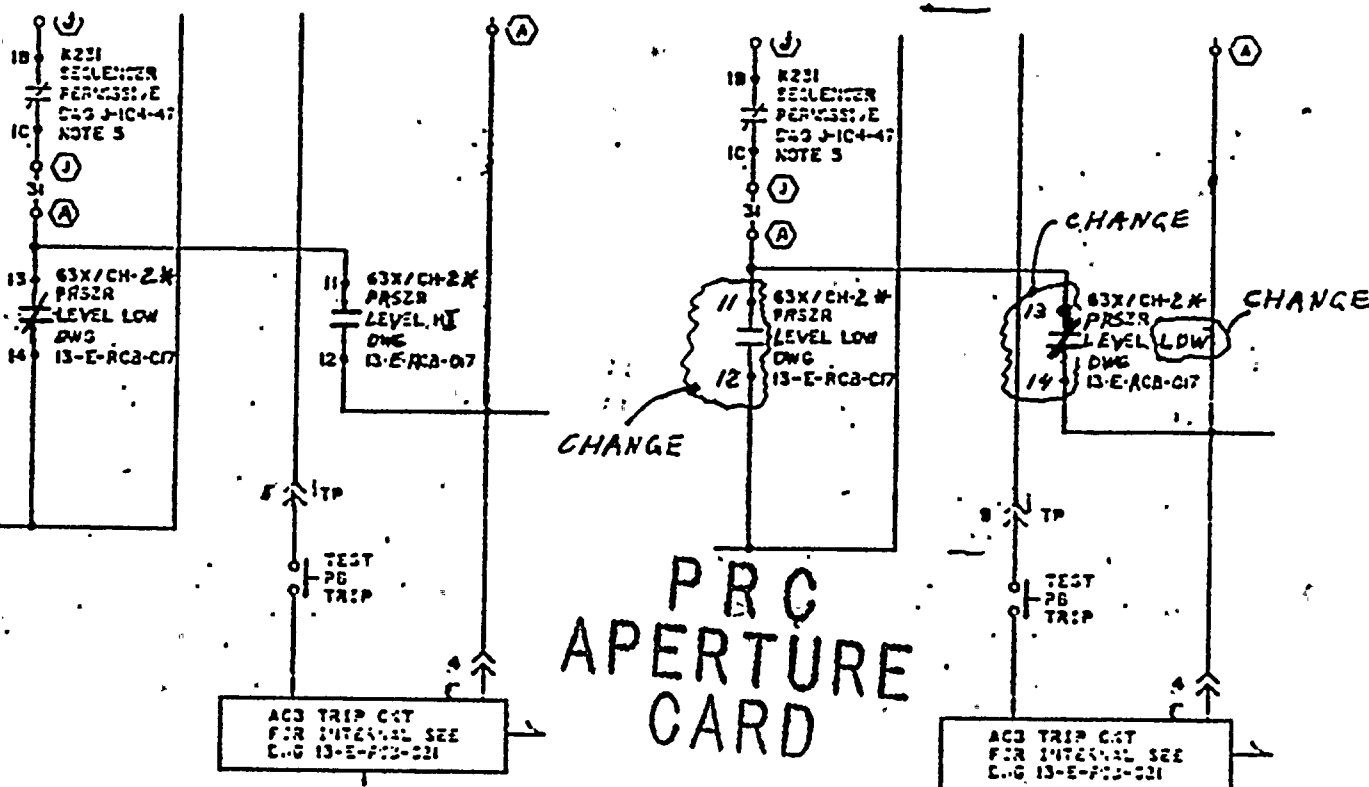
CHANGE REQUESTED BY: ☐ CLIENT ☒ ENGINEERING ☐ FIELD ☒ SUPPLIER/CONTRACTOR

REASON FOR CHANGE: PER VENDOR CHANGE REQUEST (REF: C-E LETTER V-CE-15887, FEB. 1, 1982)

DESCRIPTION OF CHANGE AT LOCATIONS: F-5 & F-6 CHANGE DIAG-
RAM AS INDICATED BY:

WAS:

IS:



MATERIAL PROCUREMENT RESPONSIBILITY

- ☐ BECHTEL OFFICE ☐ SUPPLIER/CONTRACTOR
☐ BECHTEL FIELD ☒ NONE REQUIRED

AFFECTED PURCHASE ORDERS

NONE

PM OR MR PREPARED FOR DCN CHANGE

YES NO

V

GROUP SUPERVISOR

DATE

PROJECT ENGINEER

DATE

NUCLEAR GROUP SUPERVISOR (IF REQUIRED)

DATE

PQAE (Q-LISTED PRD'S AND SINGLE LINE DWGS)

DATE

REMARKS NO ADDITIONAL CIRCUITS, EE-580 TERMINATIONS

NEED REWORK, SUSS-1CH04; T/O - 09/02/81; DCP-15J-CH-088

ADDITIONAL DISTRIBUTION:

☐ PROJECT PROCUREMENT MANAGER

☐ COST TREND ENGINEER

REV. 0

8204190324-01

2011
2011
2011



PALO VERDE NUCLEAR GENERATING STATION UNITS 1, 2 & 3

DRAWING CHANGE NOTICE (DCN)

JOB NO. 10407

UNIT	ASSIGNEE *			
A	C	S	O	
1	C	S	O	
2	C	S	O	
3	C	S	O	

CIRCLE APPLICABLE UNIT(S) AND ASSIGNEE
* C - CONSTRUCTION, S - STARTUP, O - OWNER

DRAWING NO.	SHEET NO.	REV.	DCN NO.
13-E-CHB-024		4	6

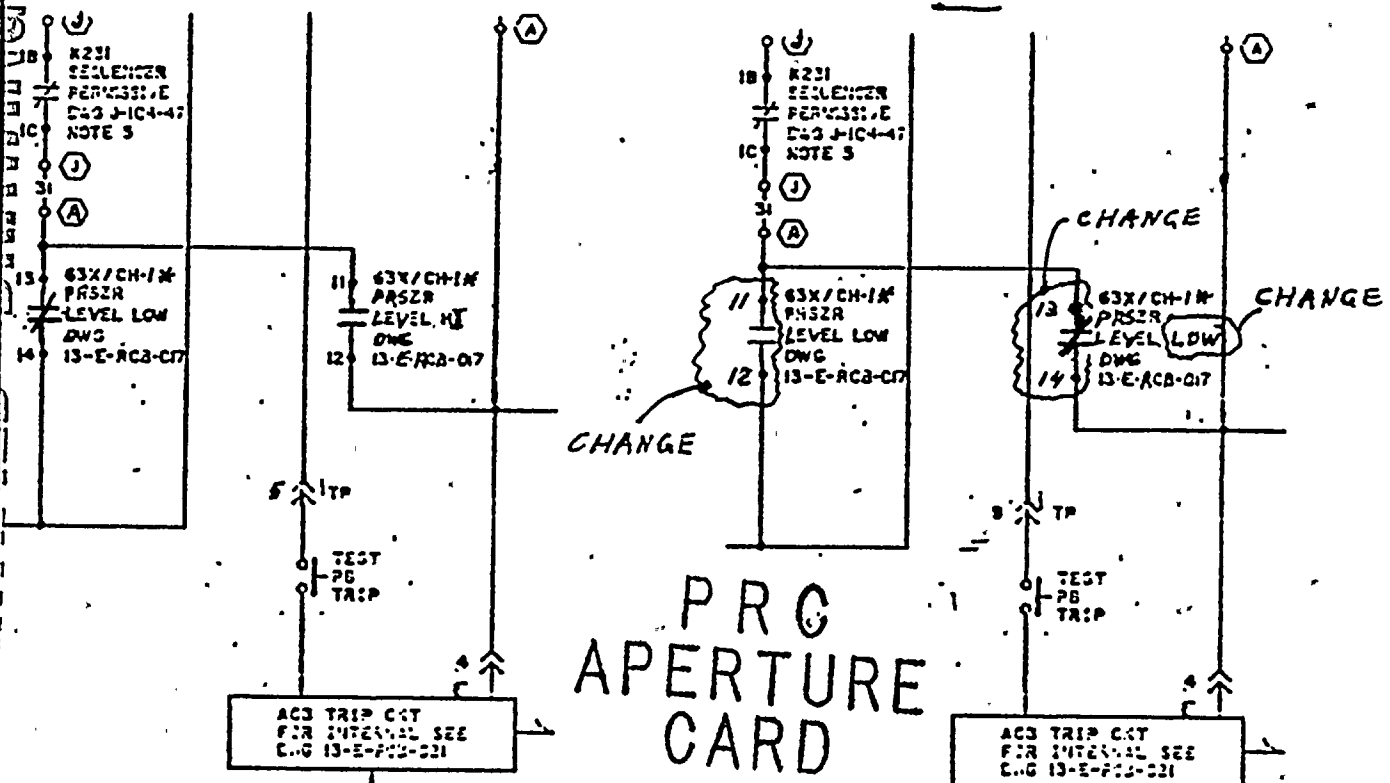
JOB NO. 10407 PAGE 1 OF 1

DATE: 02/17/82 BY: G. KLEYMAN

CHANGE REQUESTED BY: ☐ CLIENT ☒ ENGINEERING ☐ FIELD ☒ SUPPLIER/CONTRACTORREASON FOR CHANGE: PER VENDOR CHANGE REQUEST (REF: C-E LETTER
V-CE-15887, FEB. 1, 1982)DESCRIPTION OF CHANGE AT LOCATIONS: F-5 & F-6 CHANGE DIAG-
RAM AS INDICATED BY:

WAS:

IS:



2/26/82

MATERIAL PROCUREMENT RESPONSIBILITY

☐ BECHTEL OFFICE ☐ SUPPLIER/CONTRACTOR
☐ BECHTEL FIELD ☒ NONE REQUIRED

AFFECTED PURCHASE ORDERS

NONE

PM OR MR PREPARED FOR DCN CHANGE

YES

NO

✓

GROUP SUPERVISOR 2/24/82 N/A
PROJECT ENGINEER 2/24/82 N/A
REMARKS NO ADDITIONAL CIRCUITS; EE-580 TERMINATIONS

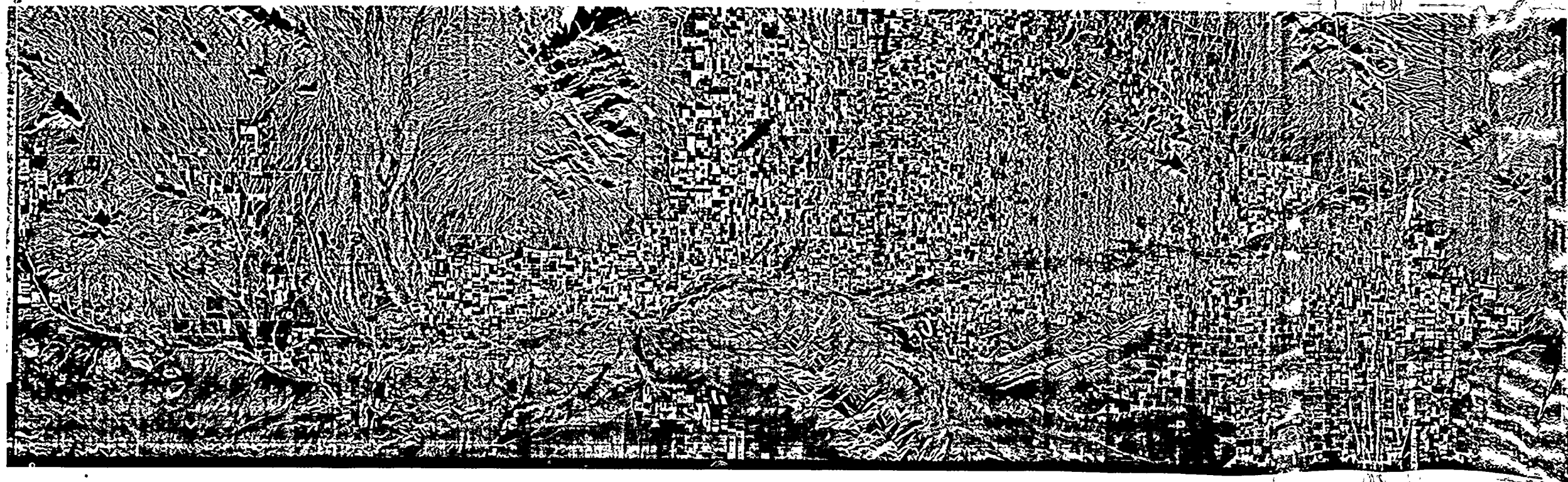
NEED REWORK. SUSS-1CH04; T/O-09/02/81; DCP-15J-CH-088

ADDITIONAL DISTRIBUTION: ☐ PROJECT PROCUREMENT MANAGER ☐ COST TREND ENGINEER

REV.0

8204190322-01

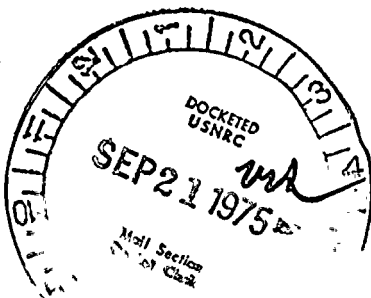
OFFICE
OF THE
ATTORNEY GENERAL
STATE OF NEW YORK



Flight 665-087 Pass 02 Scale 1:480,000

DO NOT REMOVE

Regulatory Docket File



50-528/529/530
control 10297

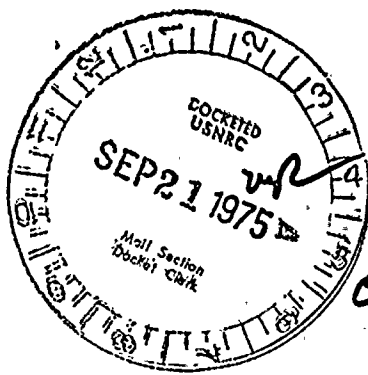
Flight 2-90-111 Pass 03 Scale 1:200,000



00

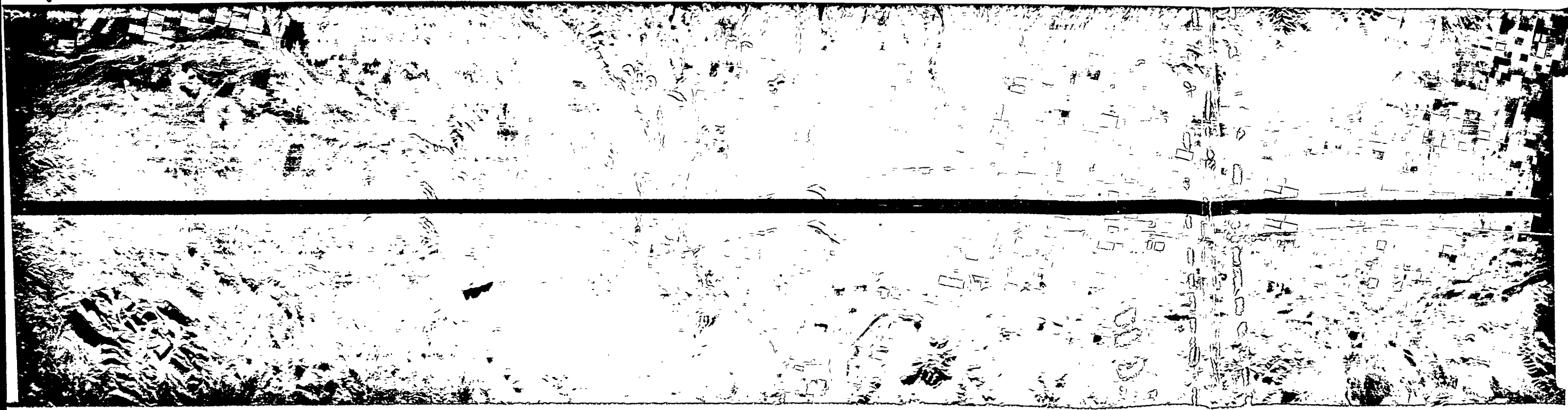



DO NOT REMOVE
Regulatory Docket File



50-528/529/530

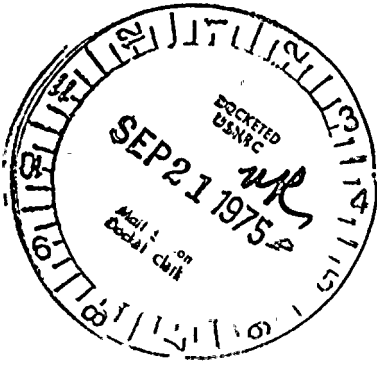
Control 10297



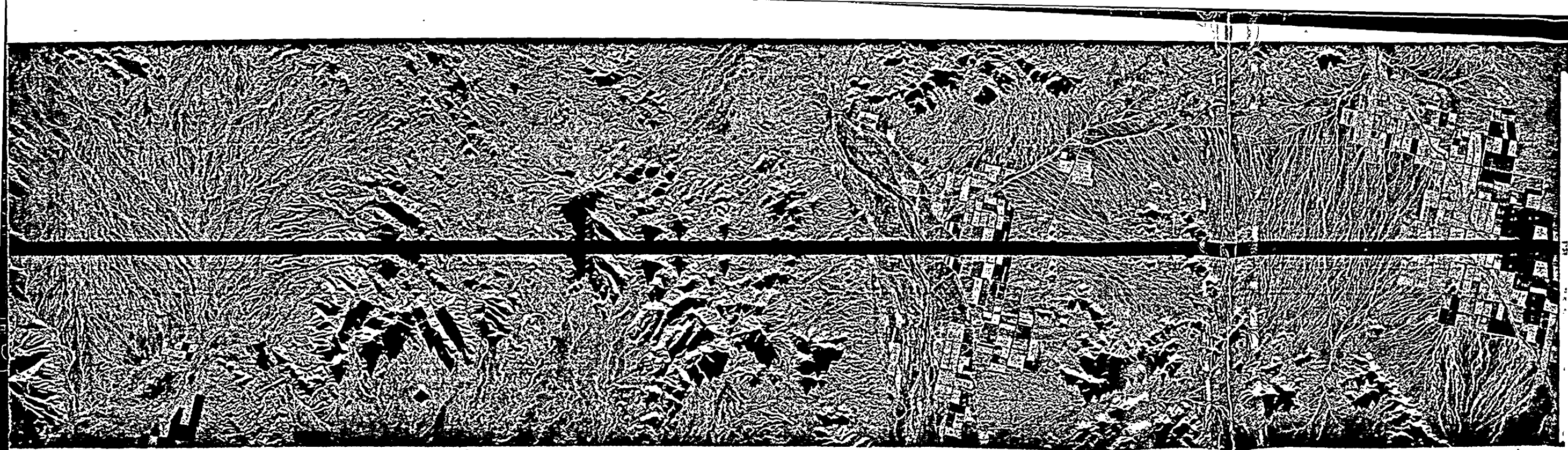
Flight 2-89-110 Pass 01 Scale 1:200,000 

DO NOT REMOVE

Regulatory Docket File



52 528/529/530
control 10297



Flight 2-76-94 Pass 01 Scale 1:200,000 A

DO NOT REMOVE

Regulatory Docket File

50-528/529/530
Control 10297

