

S Sand

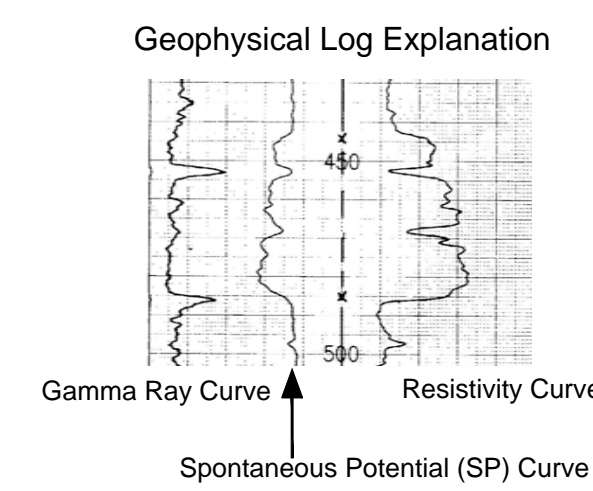
Q Sand

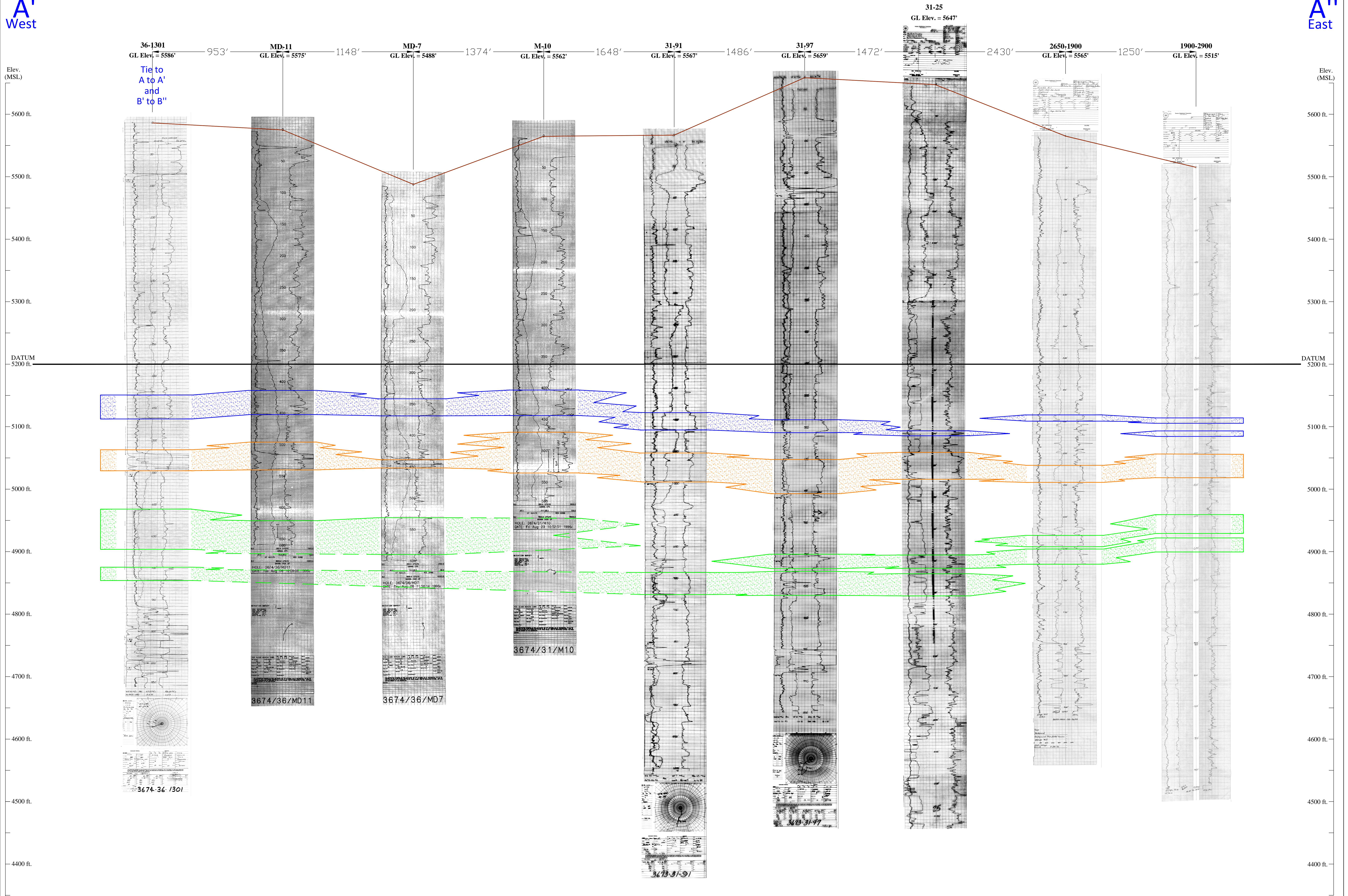
O Sand

Distance between Holes/Wells (ft)

Ground Level
5200 ft. Elev. (MSL)

M-22 Hole/Well Number





S Sand

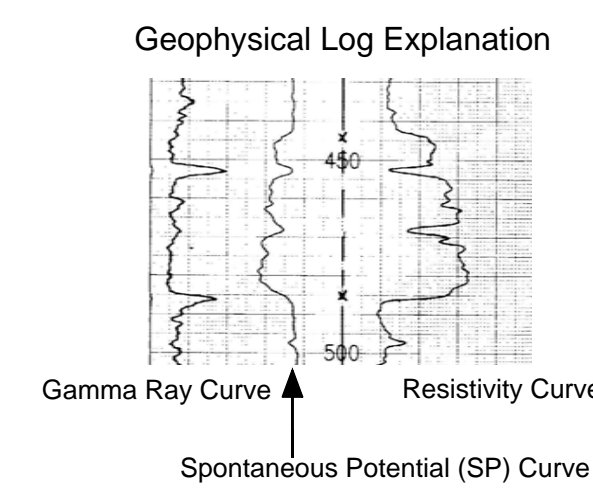
Q Sand

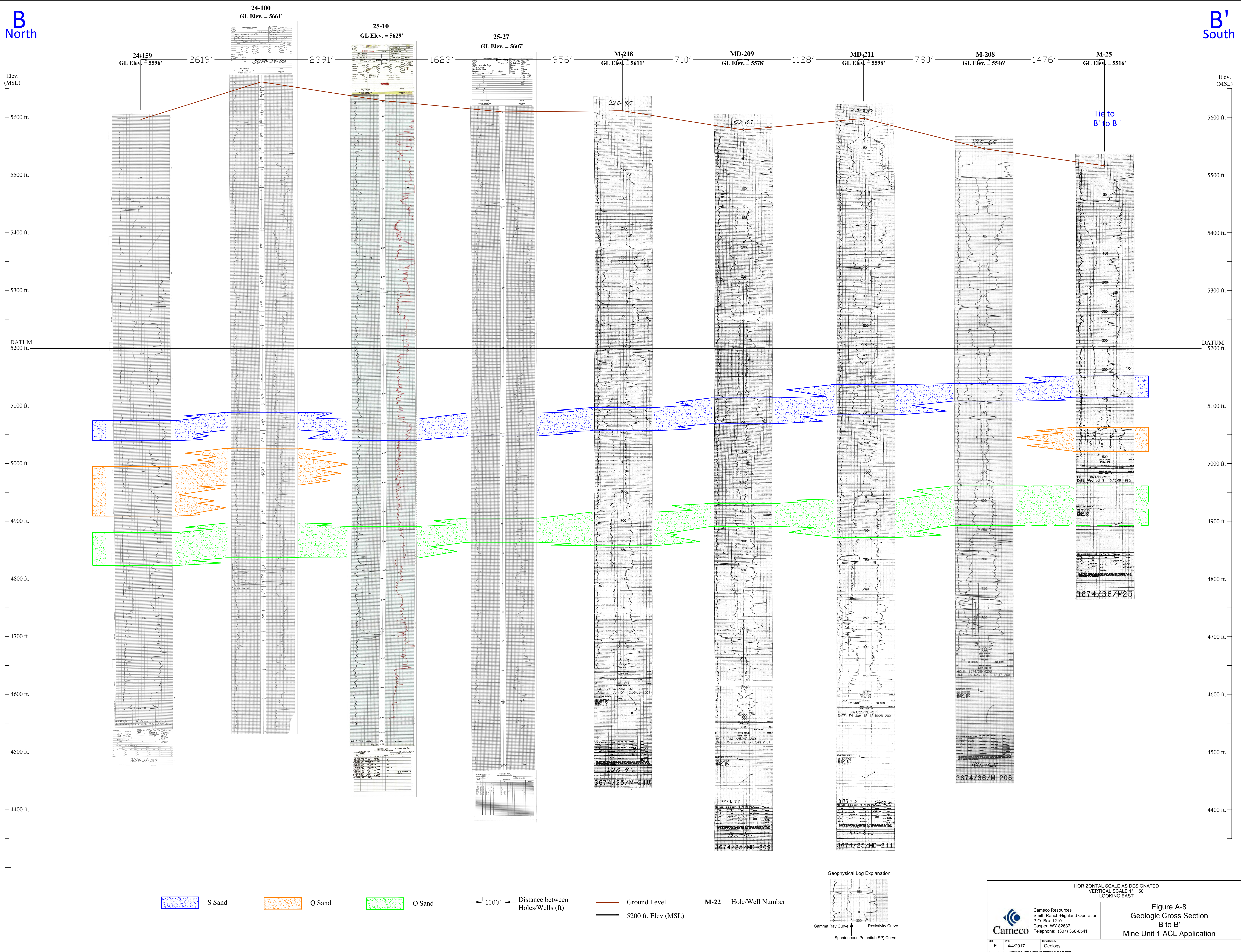
O Sand

1000' Distance between Holes/Wells (ft)

Ground Level
5200 ft. Elev. (MSL)

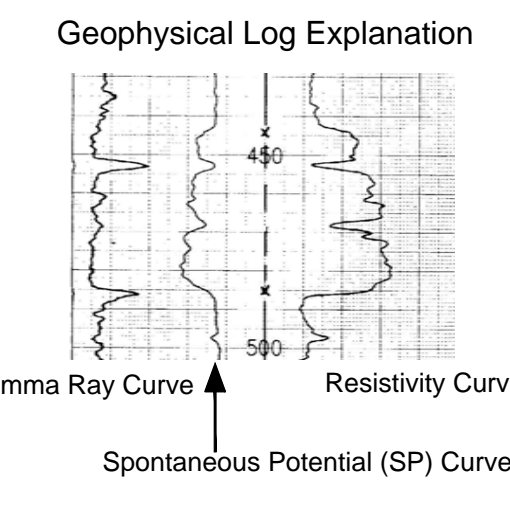
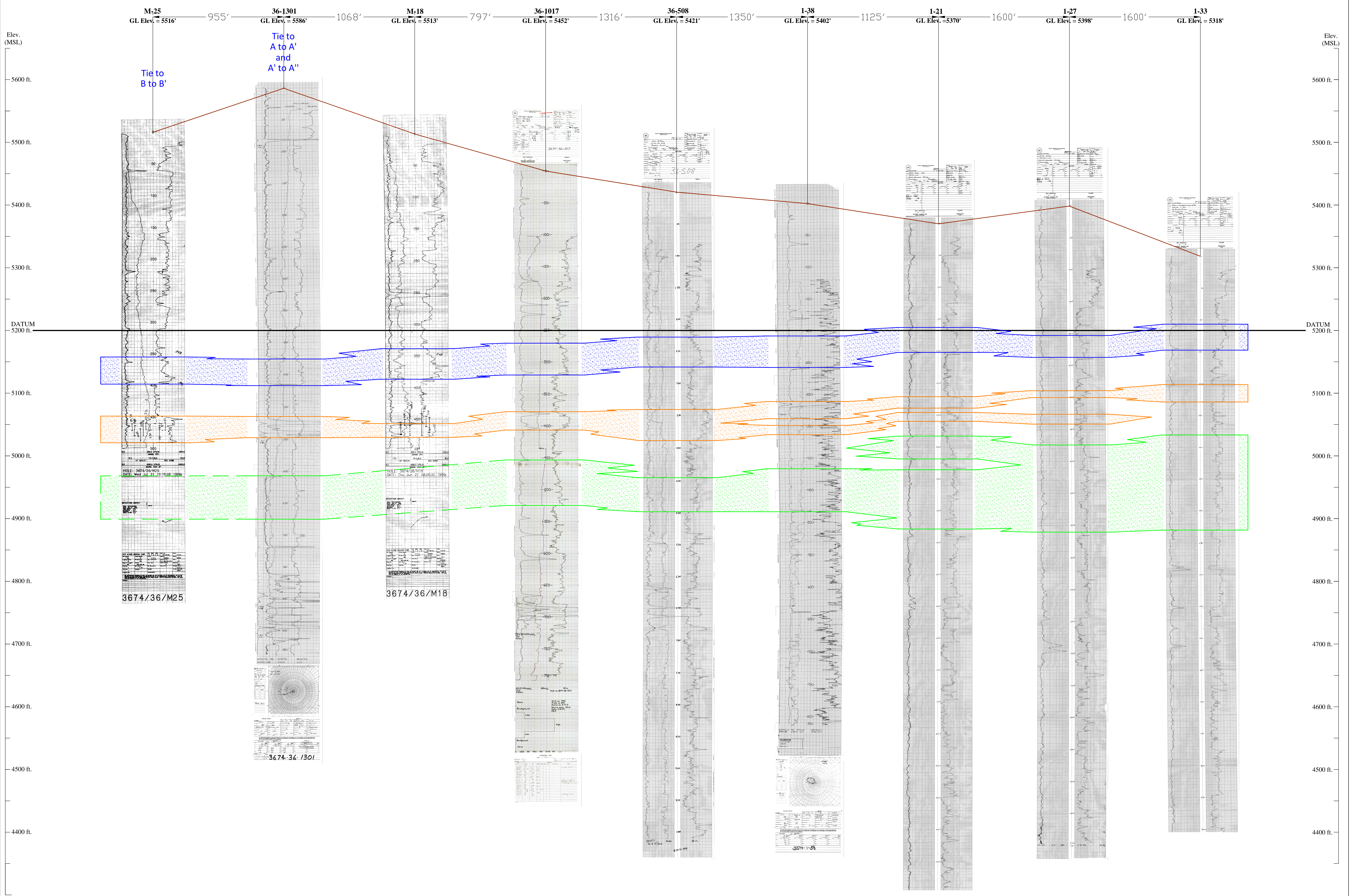
M-22 Hole/Well Number





B'
North

B''
South



Cameco Resources
Smith Ranch-Highland Operation
P.O. Box 1210
Casper, WY 82637
Telephone: (307) 358-6541

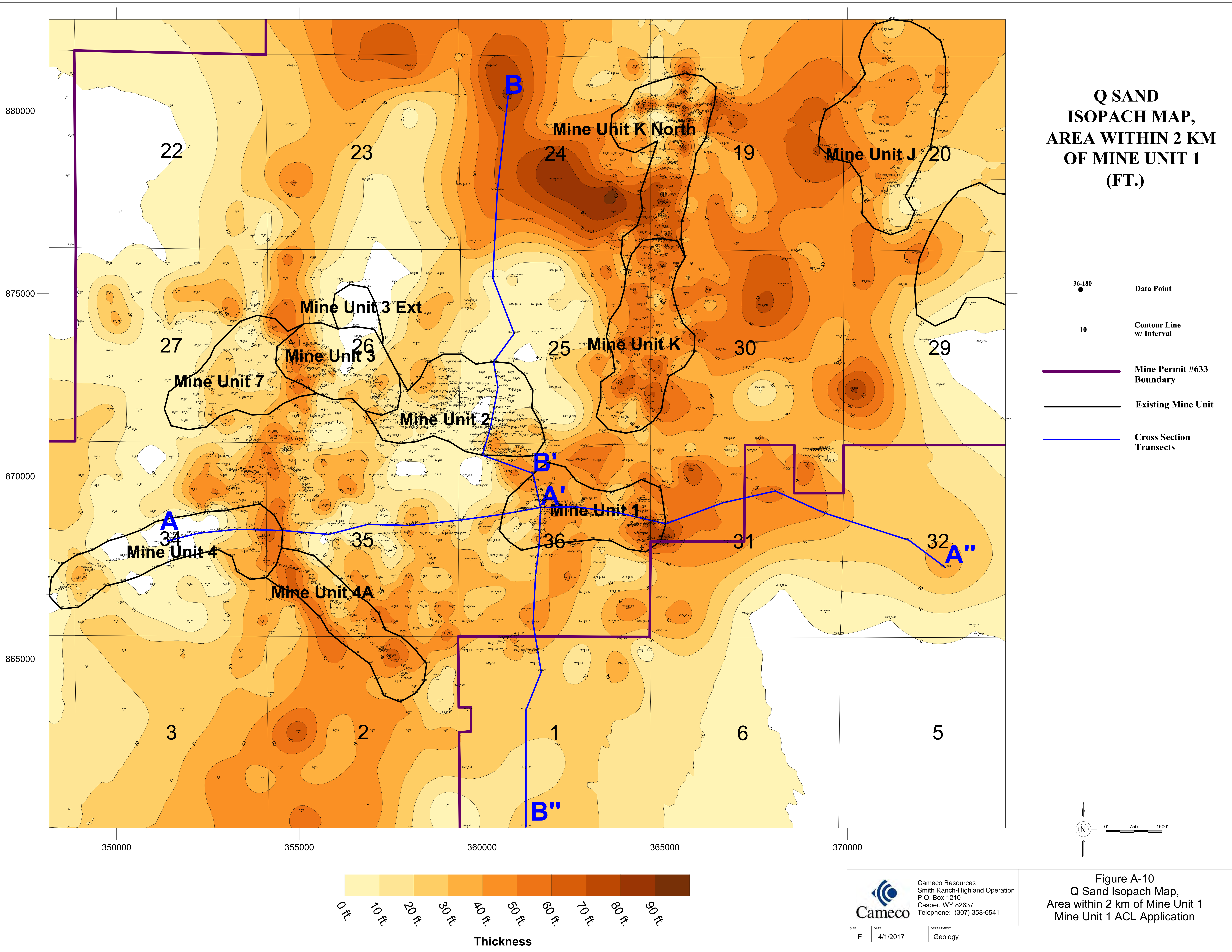
Horizontal Scale as Designated
Vertical Scale 1" = 50'
Looking East

Figure A-9
Geologic Cross Section
B' to B''
Mine Unit 1 ACL Application

REV: E

DATE: 4/4/2017

DRAWN BY: Geology



880000

875000

870000

865000

350000

355000

360000

365000

370000

**Q SAND
STRUCTURE MAP,
AREA WITHIN 2 KM
OF MINE UNIT 1
(ELEVATION TO
TOP OF SAND)**

36-180

Data Point

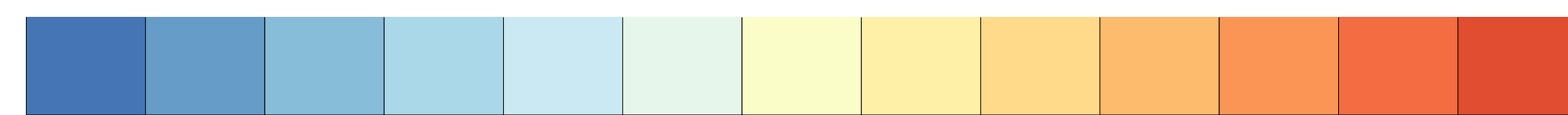
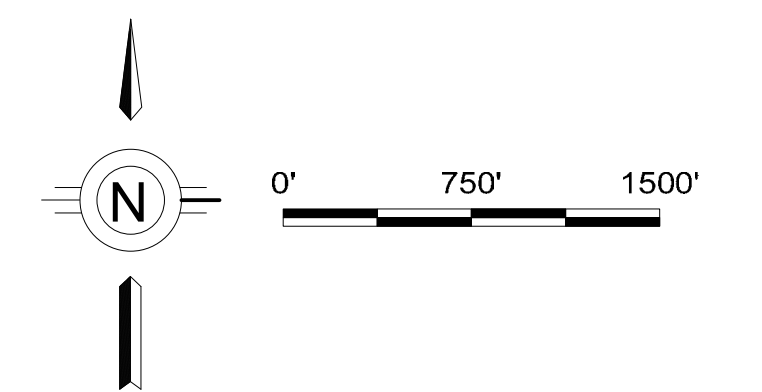
10

Contour Line
w/ Interval

Mine Permit #633
Boundary

Existing Mine Unit

Cross Section
Transects



4910 ft. 4930 ft. 4950 ft. 4970 ft. 4990 ft. 5010 ft. 5030 ft. 5050 ft. 5070 ft. 5090 ft. 5110 ft. 5130 ft. 5150 ft.

Elevation in MSL



Cameco Resources
Smith Ranch-Highland Operation
P.O. Box 1210
Casper, WY 82637
Telephone: (307) 358-6541

SIZE	DATE	DEPARTMENT
E	4/1/2017	Geology

**Figure A-11
Q Sand Structure Map,
Area within 2 km of Mine Unit 1
Mine Unit 1 ACL Application**