

Central File

SEP 4 1979

Vepco

VIRGINIA ELECTRIC AND POWER COMPANY, RICHMOND, VIRGINIA 23261

August 31, 1979

Mr. James P. O'Reilly, Director
Office of Inspection & Enforcement
U. S. Nuclear Regulatory Commission
Region II
101 Marietta Street, Suite 3100
Atlanta, Georgia 30303

Serial No. 552B/070279
PSE&C/RKM:mac:wang

Docket Nos. 50-280
50-281

License Nos. DPR-32
DPR-37

Dear Mr. O'Reilly:

The 60-day response required by your letter of July 2, 1979, concerning I.E. Bulletin No. 79-14 "Seismic Analyses for As-Built Safety-Related Piping Systems", its Revision 1 dated July 18, 1979 and its Supplement dated August 15, 1979, is provided herein for Surry Power Station Units 1 and 2.

As requested in I.E. Bulletin 79-14, we are verifying that the design criteria and documents that were used as input to the seismic analysis adequately conform to the as-built configuration of safety-related piping systems. Considerable progress has already been and is being made towards full compliance with this Bulletin due to the work completed on the Show Cause Order of March 13, 1979. Surry Power Station Unit 1 has completed 100% of its piping system as-built verification and approximately 50% of its support as-built verification called for in the Show Cause Order, while Surry Power Station Unit 2 has completed 100% of its piping system as-built verification and approximately 85% of its support as-built verification required by the Show Cause Order. The requirements of I.E. Bulletin No. 79-14 for a large percentage of the affected piping systems have therefore been handled by the Show Cause Order.

As-built verification is being accomplished on the remaining systems by the use of Inspection Documents, which are being developed based on a review of existing Surry Power Station Units 1 and 2 system documentation. These Inspection Documents are the controlling documents in verifying as-built system configurations.

Attachment 1 illustrates the inspection and evaluation program for Surry Power Station Units 1 and 2. The Inspection Document, a detailed isometric drawing, is as-built verified and then checked by Quality Control (QC) personnel to assure a high degree of accuracy in the as-built documentation. The QC approved Inspection Document is then issued to a stress analyst. The stress analyst will use current chart method analysis to quickly determine a very conservative status of the piping system's stress levels. The piping system lines will be accepted if no overstressed conditions exist, but if a more detailed analysis is required, they will be coded for NUPIPE analysis. The outcome of the NUPIPE analysis will determine the ultimate conformance or nonconformance of the piping system line, with overstress as the determining decision factor. If a nonconformance exists, a two-day evaluation is made of the nonconformance to determine its significance, and Vepco will respond according to the Surry Power Station Technical Specification requirements. Finally, a fully analytical engineering evaluation of the nonconformance will rectify any overstressed condition.

ACT

7910020 552

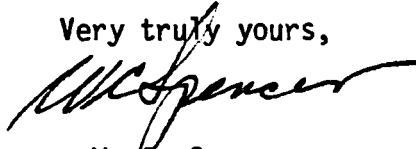
Q

In Surry Power Station Unit 1, 35 of the approximately 100 Inspection Documents have been field verified. This initial effort has shown that the piping geometry and dimensions have not changed on approximately 70% of the Inspection Documents, have slightly changed on approximately 15% of the other Inspection Documents, and have significant differences for the remaining Inspection Documents. The tentative completion date for the field verification of the piping geometry and dimensions, support and restraint location, clearance and function, pipe attachment, and valve and valve operator location is September 15, 1979. The as-built verification effort for Surry Power Station Unit 2 will begin this coming week.

Tables 1 and 2 provide a revised listing of those systems or portions of systems that are being inspected to verify the "as-built" configuration for Surry Power Station Units 1 and 2, respectively. These Tables are an update of the Tables provided in our 30-day response on August 7, 1979 for I.E. Bulletin No. 79-14. In addition, the priority list added to these Tables gives the order of inspection for both Units. This order reverses the Bulletin's priority system, but the non-operating status of both Surry Power Station Units encourages this method of inspection.

We believe that this letter details the present status and direction of our inspection and evaluation program for Surry Power Station Units 1 and 2 and therefore, it complies with the intent of I.E. Bulletin No. 79-14 and its required 60-day response. If you have any additional questions, please contact us.

Very truly yours,



W. E. Spencer
Vice President - Power Station
Engineering and Construction Services

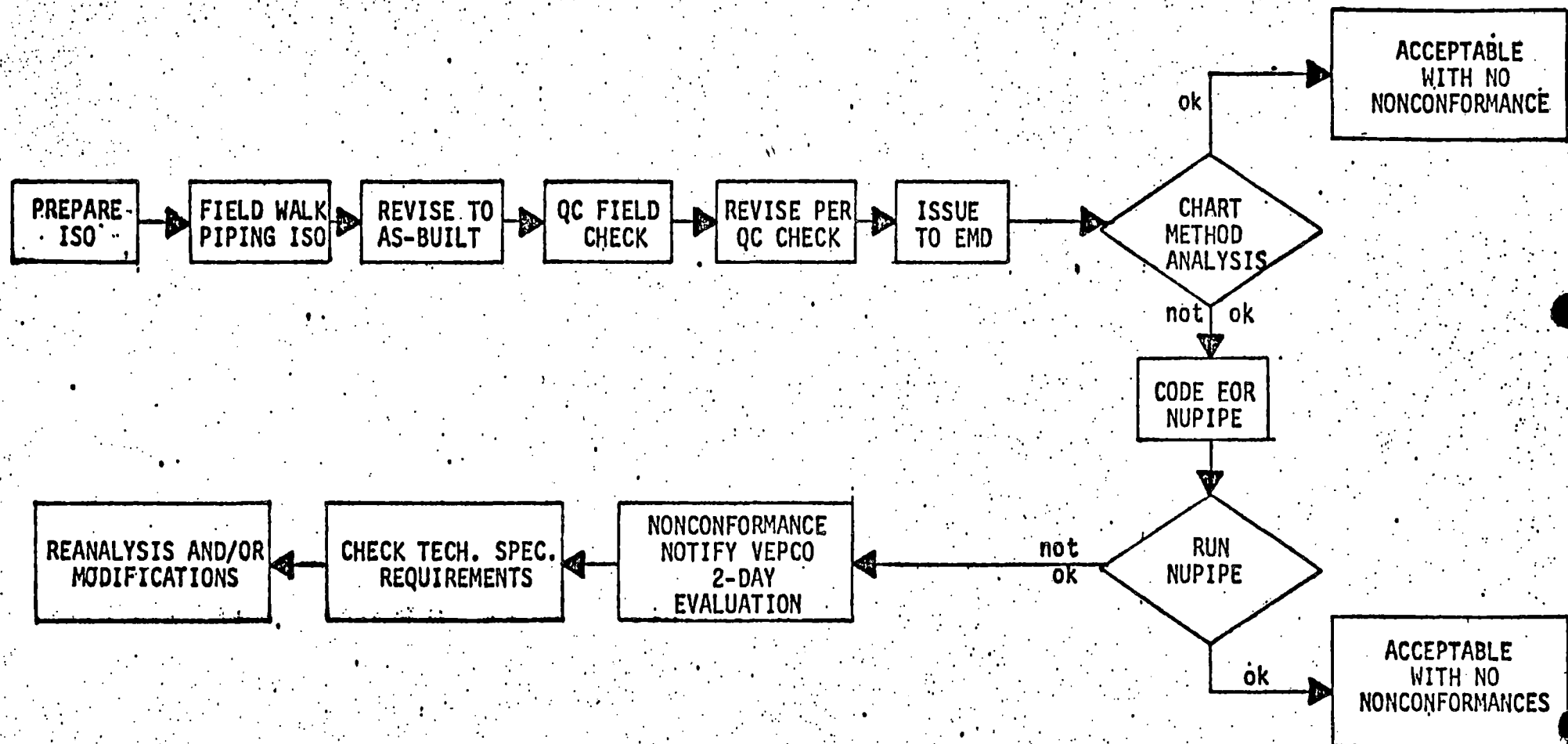
Attachment (1)
Tables (2)

cc: Mr. Victor Stello, Director
Office of Inspection & Enforcement

Mr. Harold R. Denton, Director
Office of Nuclear Reactor Regulation

ATTACHMENT 1
IE BULLETIN NO. 79-14

Design Tree for the Evaluation Process
of all Nonconformances



SURRY POWER STATION
UNIT 1

1.10
1.11

QA CATEGORY I PIPING
LINE TABLE

1.13
1.14

NOTES AND LEGEND

1.16

All Category I Piping is listed by system name and flow diagram (FM). 1.19
1.20

PRIORITY IDENTIFICATION

1. Q1 INSIDE CONTAINMENT
2. Q1 OUTSIDE CONTAINMENT
3. Q2 INSIDE CONTAINMENT
4. Q2 OUTSIDE CONTAINMENT
5. Q3 INSIDE CONTAINMENT
6. Q3 OUTSIDE CONTAINMENT

AUG 20 1979

Lines which are in more than one category are indicated by the higher priority.

The Verification Category identified in the line table is in response to as-built inspection requirements of safety related piping addressed in IE Bulletin No. 79-14 (7-2-79) 1.34
1.35

- A. Piping verification completed as part of the "Show Cause" Pipe Stress Reanalysis Effort. 1.38
- B. Piping to be inspected as described in Item 2 of IE Bulletin No. 79-14. 1.41
- C. Piping to be inspected as described in Item 3 of IE Bulletin No. 79-14. 1.44
- D. Piping 2 inch and less which does not require as-built inspection (IE Bulletin No. 79-14 Rev. 1) 1.47
- E. Piping buried in concrete or underground. 1.49

Revision 1
8-3-79
Page 1

SURREY POWER STATION, UNIT 1

QA CATEGORY I PIPING
LINE TABLE

System/TM	Line Number	Verification					Notes
		A	B	C	D	E	
Main Steam/TM-18A	30-SHP-1-601	X					1.18
	30-SHP-2-601	X					1.19
	30-SHP-3-601	X					1.20
	30-SHP-22-601	X					1.21
	30-SHP-23-601	X					1.22
	30-SHP-24-601	X					1.23
	4-SHP-25-601	X					1.24
	4-SHP-26-601	X					1.25
	4-SHP-27-601	X					1.26
	3-SHP-28-601	X					1.27
	3-SHP-29-601	X					1.28
	3-SHP-30-601	X					1.29
	3-SHP-31-601	X					1.30
	3-SHP-32-601	X					1.31
	4-SHP-37-601	X					1.32
	4-SHP-38-601	X					1.33
	4-SHP-39-601	X					1.34
	3-SHP-57-601	X					1.35
	6-SHP-45-601		X				1.36
	6-SHP-46-601		X				1.37
	6-SHP-47-601		X				1.38
High Pressure Steam Drains/TM-18A	3-SHPD-5-601	X					From 1 1/2"-SHPD-7 to and including TV-MS-109
	1 1/2-SHPD-6-601		X				1.40
	1 1/2-SHPD-7-601		X				1.41
	1 1/2-SHPD-8-601		X				1.42
	2-SHPD-16-601		X				1.43
Feedwater/TM-18A	14-WFPD-9-601	X					From 1-RC-E-1C to and including Second Check Valve
	14-WFPD-13-601	X					From 1-RC-E-1B to Second Check Valve
	14-WFPD-17-601	X					From 1RC-E-1A to Second Check Valve
							1.44
							1.45

Revision 1
8-3-79
Page 2

SURREY POWER STATION, UNIT 1

QA CATEGORY I PIPING
LINE TABLE

System/TM	Line Number	Verification					Notes
		A	B	C	D	E	
Auxiliary Feedwater/TM-18A	6-WAPD-1-601	X5					1.56
	6-WAPD-2-601	X5					1.57
	6-WAPD-3-601	X6					1.58
	6-WAPD-4-601	X6					2.1
	4-WAPD-5-601	X6					2.2
	4-WAPD-6-601	X6					2.3
	4-WAPD-7-601	X6					2.4
	4-WAPD-8-601	X6					2.5
	3-WAPD-9-601	X5					2.6
	3-WAPD-10-601	X5					2.7
	3-WAPD-11-601	X5					2.8
	3-WAPD-12-601	X5					2.9
	3-WAPD-13-601	X5					2.10
	3-WAPD-14-601	X5					2.11
	1-WAPD-15-601				X		2.12
	1-WAPD-16-601				X		2.13
	1-WAPD-17-601				X		2.14
	1-WAPD-18-601				X		2.15
	2-WAPD-19-601				X		2.16
	1-WAPD-20-601				X		2.17
	1-WAPD-21-601				X		2.18
	6-WCMU-4-151		X6				2.19
	8-WCMU-5-151	X6					2.20
	6-WCMU-6-151	X6					2.21
	6-WCMU-7-151	X6					2.22
	6-WCMU-8-151	X6					2.23
	4-WCMU-9-151	X6					2.24
	4-WCMU-10-151	X6					2.25
	6-WCMU-11-151	X6					2.26
	6-WCMU-39-151		X6				2.27
	6-WCMU-50-151		X6				2.28
	6-WCMU-51-151		X6				2.29
	6-WCMU-52-151		X6				2.30
	6-WCMU-53-151		X6				2.31
	6-WCMU-54-151	X6					2.32
	6-WCMU-55-151		X6				2.33
	6-WCMU-56-151	X6					2.34
	6-WCMU-60-151		X6				2.35
	2-WCMU-61-151				X		2.36
	2-WCMU-62-151				X		2.37

SURREY POWER STATION, UNIT 1

QA CATEGORY I PIPING
LINE TABLE

<u>System/TM</u>	<u>Line Number</u>	<u>Verification</u>					<u>Notes</u>	
		A	B	C	D	E		
	6-WCMU-50-151	X5	X5				From 6" WAPD-2 to MOV-FW-160A	2.38
	6-WAPD-51-151	X5						2.39
	6-WAPD-52-151		X5				From 6" WAPD-50 to MOV-FW-160B	2.40
	6-WAPD-150-151	X6					From 6" WAPD-1 to MOV-FW-260A	2.41
	6-WAPD-152-151	X6					From 6" WAPD-2 to MOV-FW-260B	2.42
Service Water/TM-21A	48-WS-1-10	X6						2.44
	48-WS-2-10	X6						2.45
	42-WS-12-10	X6					From MOV-SW-102B to	2.46
							42"-WS-13	2.47
	42-WS-13-10	X6					From MOV-SW-102A to	2.48
							42"-WS-14	2.49
								2.50
	30-WS-14-10	X6						2.51
	30-WS-15-10	X6						2.52
	30-WS-16-10	X6						2.53
	30-WS-17-10	X6						2.54
	30-WS-18-10	X6						2.55
	30-WS-19-10	X6						2.56
	42-WS-20-10	X6						2.57
	30,36-WS-21-10	X5						2.58
	30-WS-22-10	X6						3.1
	30,36-WS-23-10	X6						3.2
	30-WS-24-10	X6						3.3
	24-WS-26-10	X5 X6						3.4
	24-WS-28-10	X5 X6						3.5
	24-WS-30-10	X5 X6						3.6
	24-WS-32-10	X5 X6						3.7
	24-WS-33-10	X5 X6						3.8
	24-WS-34-10	X5 X6						3.9
	24-WS-35-10	X5 X6						3.10
	24-WS-36-10	X5 X6						3.11
	30-WS-37-10	X6						3.12
	30-WS-38-10	X6						3.13
	24-WS-39-10						X	3.14
	30-WS-40-10	X6						3.15
	30-WS-41-10	X6						3.16
	10-WS-43-10	X6						3.17
								3.18
	24-WS-51-10						X	
							From 42"-WS-13-10 to and	
							including VVP-12A	

SURREY POWER STATION, UNIT 1

QA CATEGORY 1 PIPING
LINE TABLESystem/FM

	<u>Line Number</u>	<u>Verification</u>					<u>Notes</u>
		A	B	C	D	E	
	24-WS-52-10					X	3.19
	3-WS-53-136	X6					3.20
	3-WS-54-136	X6					3.21
	3-WS-55-136	X6					3.22
	3-WS-56-136	X6					3.23
	3-WS-57-136	X6					3.24
	3-WS-58-136	X6					3.25
	96-WC-1-10					X	3.26
	96-WC-2-10					X	3.27
	96-WC-3-10					X	3.28
	96-WC-4-10					X	3.29
Service Water/FM-21B	2-WS-70-136				X		3.31
	2-WS-71-136				X		3.32
	2-WS-72-136				X		3.33
	2-WS-73-136				X		3.34
	2-WS-74-21B				X		3.35
	2-WS-75-21B				X		3.36
	2-WS-76-21B				X		3.37
	2-WS-77-21B				X		3.38
	2-WS-78-21B				X		3.39
	2-WS-79-21B				X		3.40
	2-WS-80-21B				X		3.41
	1 1/2-WS-81-21B				X		3.42
	1 1/2-WS-82-21B				X		3.43
	2-WS-83-21B				X		3.44
	1 1/2-WS-84-21B				X		3.45
	1 1/2-WS-85-21B				X		3.46
	1 1/2-WS-86-21B				X		3.47
	1 1/2-WS-87-21B				X		3.48
	2-WS-88-21B				X		3.49
	3-WS-89-136	X6					3.50
	2-WS-90-136				X		3.51
Component Cooling/ FM-22							3.53
	18,24-CC-1-121	X6					3.54
	18-CC-2-121	X6					3.55
	18,24-CC-3-121	X6					3.56

SURRY POWER STATION, UNIT 1

**QA CATEGORY I PIPING
LINE TABLE**

<u>System/FM</u>	<u>Line Number</u>	<u>Verification</u>	<u>Notes</u>
	A	B	C D E
	18-CC-4-121	X6	3.57
	18-CC-5-121	X6	3.58
	18-CC-6-121	X6	4.1
	18-CC-8-121	X5	4.2
	18-CC-10-121	X5	4.3
	18-CC-16-121	X5	4.4
	18-CC-17-121	X5	4.5
	18-CC-19-121	X6	4.6
	6-CC-20-151	X6	4.7
	6-CC-21-151	X6	4.8
	6-CC-22-151	X6	4.9
	12-CC-27-121	X6	4.10
	12-CC-34-121	X6	4.11
	1-CC-55-151		X 4.12
	8-CC-61-151	X6	4.13
	6-CC-62-151	X6	4.14
	6-CC-64-151	X6	4.15
	2-CC-65-121		X From 10"-CC-67 to VGT-20E 4.16
	4,8-CC-66-151	X6	4.17
	4,10-CC-67-121	X6	4.18
	8-CC-67-151	X6	4.19
	2-CC-68-121		X From VGT-20E to 8"-CC-70 4.20
	8-CC-69-151	X6	4.21
	10,14-CC-70-121	X6	4.22
	8-CC-71-151	X6	4.23
	3-CC-73-151	X6	From VGW-15A to 18"-CC-10 4.24
	3-CC-74-151	X6	From VGW-15A to 18"-CC-17 4.25
	6,4-CC-75-151	*4	At penetration from VGW-15A 4.26
			to inside cont. *See MKS-112T 4.27
	8-CC-75-151	X6	From 10"-CC-81 to HCV-CC-101A 4.28
	6,4-CC-76-151	*4	At penetration from VGW-15A 4.29
			to inside cont. 4.30
	6,4-CC-77-151	*4	At penetration from VGW-15A 4.31
			to inside cont. 4.32
	6,4-CC-78-151	*4	At penetration from TV-CC-110A 4.33
			to inside cont. *See MKS-112L 4.34
	8-CC-78-151	X6	From 18"-CC-17 to HCV-CC-101B 4.35
	6,4-CC-79-151	*4	At penetration from TV-CC-110B 4.36
			to inside cont. 4.37
	6,4-CC-80-151	*4	At penetration from TV-CC-110C 4.38

SURREY POWER STATION, UNIT 1

QA CATEGORY I PIPING
LINE TABLESystem/PM

<u>Line Number</u>	<u>Verification</u>					<u>Notes</u>
	A	B	C	D	E	
10-CC-81-121	X6					to inside cont.
6,2 1/2-CC-81-151	X6		X5			See MKS-112T2
3-CC-82-151			X5			
3-CC-83-151			X5			
1-CC-84-151				X		
3,6-CC-85-151	X6		X5			
3-CC-86-151			X5			
2 1/2-CC-88-151			X5			
1-CC-87-151				X		
6,2 1/2-CC-89	X6		X5			See MKS-112G3
10-CC-89-121	X6					
3-CC-90-151			X5			
3-CC-91-151			X5			
1-CC-92-151				X		
3,6-CC-93-151	X6		X5			See MSK-112L1
3-CC-94-151			X5			
1-CC-95-151				X		
2 1/2-CC-96-151			X5			
6,2 1/2-CC-97-151	X6		X5			See MKS-112G3
3-CC-98-151			X5			
3-CC-99-151			X5			
1-CC-100-151				X		
3,6-CC-101-151	X6		X5			See MKS-112L1
10-CC-101-121	X6					
3-CC-102-151			X5			
1-CC-103-151				X		
2 1/2-CC-104-151	X6		X5			See MKS-112L2
1 1/2, 1-CC-105-151				X		
6,4-CC-105-151	X5					
3-CC-107-151	X5					
4-CC-108-151	X5					
1-CC-109-151				X		
3-CC-112-151	X5					
4-CC-113-151	X5					
3-CC-200-151			X5			
3-CC-201-151			X5			
3-CC-202-151			X5			
3-CC-203-151			X5			
3-CC-204-151			X5			

4.39

4.40

4.41

4.42

4.43

4.44

4.45

4.46

4.47

4.48

4.49

4.50

4.51

4.52

4.53

4.54

4.55

4.56

4.57

4.58

5.1

5.2

5.3

5.4

5.5

5.6

5.7

5.8

5.9

5.10

5.11

5.12

5.13

5.14

5.15

5.16

5.17

5.18

5.19

5.20

SURREY POWER STATION, UNIT 1

QA CATEGORY I PIPING
LINE TABLE

System/PM	Line Number	Verification					Notes
		A	B	C	D	E	
	3-CC-205-151			X5			5.21
	3-CC-206-151			X5			5.22
	3,6-CC-207-151	X5					5.23
	18-CC-220-121	X6					5.24
	6-CC-222-151	X6					5.25
	18-CC-223-121	X6					5.26
	18-CC-224-121	X6					5.27
	18-CC-225-121	X6					5.28
	18,24-CC-226-121	X6					5.29
	18-CC-227-121	X6					5.30
	18-CC-228-121	X6					5.31
	18-CC-229-121	X6					5.32
	18-CC-230-121	X6					5.33
	18-CC-231-121	X6					5.34
	18-CC-232-121	X6					5.35
	18-CC-233-121	X6					5.36
	18-CC-234-121	X6					5.37
	18,24-CC-235-121	X6					5.38
	18-CC-236-121	X6					5.39
	18-CC-237-121	X6					5.40
	1 1/2-CC-246-151			X			5.41
	1 1/2-CC-247-151			X			5.42
	3,1,3/4-CC-248-151	X5					5.43
	3,1,3/4-CC-249-151	X5					5.44
	1 1/2-CC-261-151			X			5.45
	3/4-CC-262-151			X			5.46
	3-CC-285-151	X6					5.47
	1 1/2-CC-295-151			X			5.48
	2,1-CC-296-151			X			5.49
	1-CC-301-151			X			5.50
	3/4-CC-302-151			X			5.51
	3/4-CC-303-151			X			5.52
	3/4-CC-304-151			X			5.53
	1-CC-305-151			X			5.54
	1 1/2-CC-306-151			X			5.55
	1-CC-307-151			X			5.56
	1 1/2-CC-308-151			X			5.57
	8-CC-314-151	X6					5.58
	2-CC-335-151			X			6.1
	2-CC-336-151			X			6.2

From LCV-CC-100 to 6"-CC-20

SURREY POWER STATION, UNIT 1

QA CATEGORY I PIPING
LINE TABLESystem/TM

<u>Line Number</u>	<u>Verification</u>					<u>Notes</u>
	A	B	C	D	E	
2-CC-337-151				X		6.3
1-CC-338-151				X		6.4
1-CC-339-151				X		6.5
2-CC-340-151				X		6.6
2-CC-341-151				X		6.7
2-CC-342-151				X		6.8
1 1/2-CC-343-151				X		6.9
1 1/2-CC-344-151				X		6.10
1 1/2-CC-345-151				X		6.11
1 1/2-CC-346-151				X		6.12
1 1/2-CC-347-151				X		6.13
1 1/2-CC-348-151				X		6.14
2-CC-349-151				X		6.15
2-CC-350-151				X		6.16
2-CC-351-151				X		6.17
1-CC-364-151				X		6.18
1-CC-382-151				X		6.19
1-CC-383-121				X		6.20
1-CC-385-121				X		6.21
1-CC-386-151				X		6.22
1-CC-387-151				X		6.23
1-CC-410-152				X		6.24
1 1/2-CC-411-152				X		6.25
1-CC-412-152				X		6.26
1-CC-413-152				X		6.27
1 1/2-CC-414-152				X		6.28
1-CC-416-152				X		6.29
1 1/2-CC-417-152				X		6.30
1-CC-418-152				X		6.31
1-CC-419-152				X		6.32
1 1/2-CC-420-152				X		6.33
1-CC-421-152				X		6.34
1-CC-422-152				X		6.35
1 1/2-CC-423-152				X		6.36
1-CC-424-152				X		6.37
1-CC-424-152				X		6.38
1 1/2-CC-426-152				X		6.39
1-CC-427-152				X		6.40
1-CC-428-152				X		6.41
1 1/2-CC-429-152				X		6.42

From 8"-CC-61 to VGS-60B

SURRY POWER STATION, UNIT 1

QA CATEGORY I PIPING
LINE TABLE

<u>System/TM</u>	<u>Line Number</u>	<u>Verification</u>	<u>Notes</u>
		A B C D E	
	1-CC-430-152	X	6.43
	1-CC-431-152	X	6.44
	1 1/2-CC-432-152	X	6.45
	1-CC-433-152	X	6.46
	1-CC-434-152	X	6.47
	1 1/2-CC-435-152	X	6.48
	1-CC-436-152	X	6.49
	1-CC-437-152	X	6.50
	1 1/2-CC-438-152	X	6.51
	1-CC-439-152	X	6.52
	1-CC-440-152	X	6.53
	1 1/2-CC-441-152	X	6.54
	1-CC-442-152	X	6.55
	1-CC-443-152	X	6.56
	1 1/2-CC-444-152	X	6.57
	1-CC-445-152	X	6.58
	1-CC-446-153	X	7.1
	1-CC-447-153	X	7.2
	1-CC-448-153	X	7.3
	1-CC-449-153	X	7.4
	1-CC-450-153	X	7.5
	1-CC-451-153	X	7.6
	1-CC-452-153	X	7.7
	1-CC-453-153	X	7.8
	1-CC-454-153	X	7.9
	1-CC-455-153	X	7.10
	1-CC-456-153	X	7.11
	1-CC-457-153	X	7.12
	1-CC-458-153	X	7.13
	1-CC-459-153	X	7.14
	1-CC-460-153	X	7.15
	1/4-CC-473-153	X	7.16
	1/4-CC-474-153	X	7.17
Instrument Air/TM-25A	2-ACC-9-21B	X	From second VGM-20S outside containment to VGM-20S inside Containment
			7.19
			7.20
			7.21
			7.22
	2-ACC-40-21B	X	From second VGM-20S
			7.23

SURREY POWER STATION, UNIT 1

QA CATEGORY I PIPING
LINE TABLESystem/TMLine NumberVerification
A B C D ENotes

Boron Recovery/TM-29A&B

4-BR-1-152	X6	From 1-BR-TK-3 to VDS-15Y	7.28
4-BR-2-152	X6	From 4"-BR-1 to VDS-15Y	7.29
1-BR-5-152	X	From VDS-15Y to 1DR-TK-3	7.30
2-BR-10-152	X	From VDS-15Y to 1-BR-EV-2	7.31
4-BR-11-152	X6	From 1-BR-EV-2 to VDF-15Y	7.32
4-BR-12-152	X6	From 4"-BR-11 to VDF-15Y	7.33
4-BR-17-152	X6		7.34
1 1/2-BR-18-152	X		7.35
3/4-BR-28-152	X		7.36
3/4-BR-31-152	X		7.37
2-BR-37-152	X	From 4"-BR-110 to VDS-15Y	7.38
2-BR-40-152	X	From 4"-BR-155 to VDS-15Y	7.39
2-BR-41-152	X	From 4"-BR-169 to VDS-15Y	7.40
1 1/2-BR-57-152	X	From HVC-BR-101Cto	7.41
		1-BR-EV-2	7.42
2-BR-77-152	X	From VBS-15Y to 1-BR-EV-2	7.43
3/4-BR-85-152	X		7.44
2-BR-86-152	X		7.45
3/4-BR-87-152	X		7.46
1 1/2-BR-88-152	X		7.47
2-BR-89-152	X		7.48
2-BR-97-152	X		7.49
1-BR-99-152	X		7.50
1-BR-101-152	X		7.51
4-BR-102-152	X6		7.52
4-BR-110-152	X6		7.53
4-BR-114-152	X6		7.54
2-BR-143-152	X		7.55
3/4-BR-144-152	X		7.56
3/4-BR-146-152	X		7.57
3/4-BR-147-152	X		7.58
4-BR-149-152	X6		8.1
4-BR-155-152	X6		8.2

outside containment
to VGM-20S inside cont.

SURRY POWER STATION, UNIT 1

QA CATEGORY I PIPING
LINE TABLESystem/TM

	<u>Line Number</u>	<u>Verification</u>					<u>Notes</u>
		A	B	C	D	E	
	1-BR-164-152				X		8.4
	4-BR-168-153			X6			8.5
	4-BR-169-153			X6			8.6
	3/4-BR-170-152				X		8.7
Fuel Pit Systems/TM-31A	12-FP-1-152	X6					8.9
	12-FP-2-152	X6					8.10
	12-FP-3-152	X6					8.11
	12-FP-4-152	X6					8.12
	12-FP-5-152	X6					8.13
	12-FP-7-152	X6					8.14
	2 1/2-FP-8-152	X6	X6				8.15
	16-FP-18-152	X6					8.16
	2-FP-19-152				X		8.17
	2-FP-20-152				X		8.18
	2-FP-21-152				X		8.19
	2-FP-22-152				X		8.20
	1-FP-23-152				X		8.21
	1-FP-24-152				X		8.22
	1-FP-25-152				X		8.23
	2 1/2-FP-26-152		X6				8.24
	2-FP-28-152				X		8.25
	2-FP-29-152				X		8.26
	12-FP-32-152	X6					8.27
	12-FP-33-152	X6					8.28
Sampling System/TM32A,B,C	3/8-SS-1-N9				X		8.30
	3/8-SS-2-N9				X		8.31
	3/8-SS-3-N9				X		8.32
	3/8-SS-4-N9				X		8.33
	3/8-SS-5-N9				X		8.34
	3/8-SS-6-N9				X		8.35
	3/8-SS-7-N9				X		8.36
	3/8-SS-99-N9				X		8.37
	3/8-SS-100-N9				X		8.38
	3/8-SS-102-N9				X		8.39
	3/8-SS-103-N9				X		8.40

SURREY POWER STATION, UNIT 1

QA CATEGORY I PIPING
LINE TABLESystem/TMLine NumberVerificationNotes

A B C D E

Drains/TM-100A&B

3/4-DG-1-152				X	8.42
2-DG-2-152				X	8.43
3/4-DG-3-152				X	8.44
1/2-DG-4-152				X	8.45
3/4-DG-5-152				X	8.46
3/4-DG-6-152				X	8.47
3/4-DG-7-152				X	8.48
1/2-DG-9-152				X	8.49
1/2-DG-10-152				X	8.50
3/4-DG-11-152				X	8.51
2-DG-12-152				X	8.52
2-DG-13-152				X	8.53
2-DG-14-152				X	8.54
1/2-DG-15-152				X	8.55
1/2-DG-16-152				X	8.56
1/2-DH-17-152				X	8.57
2-DG-18-152				X	8.58
1/2-DG-20-152				X	9.1
3/4-DG-21-152				X	9.2
3-DG-24-152			X5		9.3
1/2-DG-25-152			X		9.4
2-DG-33-152			X		9.5
2-DG-37-152			X		9.6
3-DG-40-152			X5		9.7
3-DG-41-152		X6			9.8
2-DG-42-152			X		9.9
2-DG-43-152			X		9.10
3/4-DG-44-152			X		9.11
1 1/2-DG-47-152			X		9.12
1/2-DG-50-152			X		9.13
1/2-IX-51-152			X		9.14
1/2-IX-52-152			X		9.15
1/2-IX-53-152			X		9.16
1/2-DG-54-152			X		9.17
1/2-DG-55-152			X		9.18
1/2-DG-56-152			X		9.19
1/2-DG-57-152			X		9.20
1/2-DG-58-152			X		9.21
1/2-DG-59-152			X		9.22
1/2-DG-60-152			X		9.23

SURREY POWER STATION, UNIT 1

QA CATEGORY I PIPING
LINE TABLE

System/FM	Line Number	Verification					Notes	
		A	B	C	D	E		
	1/2-DG-61-152				X			9.24
	1/2-DG-62-152				X			9.25
	1/2-DG-63-152				X			9.26
	3/4-DG-65-152				X			9.27
	3/4-DG-66-152				X			9.28
	3/4-DG-67-152				X			9.29
	3/4-DG-68-152				X			9.30
	3/4-DG-69-152				X			9.31
	3/4-DG-70-152				X			9.32
	1/2-DG-71-152				X			9.33
	1/2-DG-72-152				X			9.34
	1 1/2-DG-73-152				X			9.35
	1/2-DG-107-152				X			9.36
	1/2-DG-116-152				X			9.37
	1/2-DG-117-152				X			9.38
	1/2-DG-118-152				X			9.39
	3-DG-150-302		X5				From 1-DG-TK-1 to VDS-15Y	9.40
	3-DG-151-302		X5				From 1-DG-TK-1 to VDS-15Y	9.41
	2-DA-21-152				X		From TV-DA-100B	9.42
Vents/FM-100ASB	2-VA-13-154				X		To Valve VGS-60B	9.44
	1-VA-15-154				X		To Valve VDS-152	9.45
	1-VG-1-152				X		From VDS-15Y to 1 1/2"-VG3	9.46
	2-VG-2-152				X			9.47
	1 1/2-VG-3-152				X			9.48
	3/4-VG-17-152				X			9.49
Recirculation Spray/ FM-101A	10-RS-1-153	X3						9.51
	10-RS-2-153	X3						9.52
	10-RS-3-153	X3						9.53
	10-RS-4-153	X3						9.54
	12-RS-7-153				X			9.55
	12-RS-8-153				X			9.56
	10-RS-9-153	X3						9.57
	10-RS-10-153	X3						9.58
	10-RS-11-153	X3						10.1
	10-RS-12-153	X3						10.2
	1/2-RS-13-153				X		QAI from Valves VGS-15A	10.3

SURREY POWER STATION, UNIT 1

QA CATEGORY I PIPING
LINE TABLESystem/TMLine NumberVerification
A B C D ENotesContainment Spray/
TM-10 1A

						to lines 10-RS-10 and 10-RS-9, valve included	10.4 10.5 10.6 10.7 10.8 10.9 10.10 10.11 10.12
	4-RS-14-153	X4					
	4-RS-15-153	X4					
	8-RS-20-153	X3					
	8-RS-21-153	X3					
	8-RS-22-153	X3					
	8-RS-23-153	X3					
	12-RS-24-153			X			
	12-CS-1-153	X4		X			10.15 10.16 10.17 10.18 10.20 10.21 10.22 10.23 10.24 10.25 10.26 10.27 10.28 10.29 10.30 10.31 10.32 10.33 10.34 10.35 10.36 10.37 10.38 10.39 10.40 10.41 10.42 10.43 10.44
	12-CS-2-153	X4		X			
	10-CS-3-153	X3					
	10-CS-4-153	X3					
	4-CS-5-152	*6				*See MKS-123K1 Det. A	
	4-CS-6-152	*6					
	1 1/2-CS-7-152			X			
	1/2-CS-8-153			X			
	6-CS-9-152	X6				QAI from 1-CS-TK-1 to valve VDW-15Y, valve included	
						QAI from valve VDW-15Y to tank 1-CS-TK-1, valve included	
	6-CS-14-152	X6					
	8-CS-22-153	X3					
	8-CS-23-153	X3					
	1/2-CS-24-ICN1			X			
	1/2-CS-25-ICN1			X			
	6-CS-28-153	X6				QAI from valve MOV-CS102A to line 6-CS-29-153	
						QAI from valve MOV-CS102B to tank 1-CS-TK-1	
	6-CS-29-153	X6					
	8-CS-33-153	X3					
	8-CS-34-153	X3					
	4-CS-35-153	*6					
	4-CS-36-153	*6					
	1-CS-65-153			X		QAI to valve 1-VS-15A, valve included	

SURREY POWER STATION, UNIT 1

QA CATEGORY I PIPING
LINE TABLESystem/FMLine NumberVerification
A B C D ENotes

	3/4-CS-77-152		X			10.45
Containment Vacuum FM-102A	3/8-LM-1-N6		X			10.47
	3/8-LM-2-N6		X			10.48
	3/8-LM-3-N6		X			10.49
	1/4-NA-11-N7		X			10.50
	1/4-LM-12-N7		X			10.51
	1/4-LM-13-N7		X			10.52
	3/8-LM-14-N7		X			10.53
	3/8-LM-15-N7		X			10.54
	1/4-LM-16-N7		X			10.55
	3/8-LM-17-N6		X			10.56
	2-CV-1-154		X			10.57
	2-CV-2-154		X			10.58
	8-CV-8-151	X 3				11.1
	4-CV-20-152		X 5			11.2
Reactor Coolant/FM-103 ASB	29-RC-1-2501R		*			*Piping reanalysis completed as part of 11.6 steam generator replacement project 11.7
	31-RC-2-2501R		*			11.8
	27 1/2-RC-3-2501R		*			11.10
	29-RC-4-1501R		*			11.11
	31-RC-5-2501R		*			11.12
	27 1/2-RC-6-2501R		*			11.13
	29-RC-7-2501R		*			11.14
	31-RC-8-1501R		*			11.15
	27 1/2-RC-9-2501R		*			11.16
	12-RC-10-2501R		X			11.17
	8-RC-11-2501R		X			11.18
	8-RC-12-2501R		X			11.19
	8-RC-13-2501R					11.20
	4-RC-14-1502	X				11.21
	4-RC-15-1502	X				11.22
	6-RC-16-1502	X				11.23
	6-RC-17-1502	X				11.24
	6-RC-18-1502	X				11.25
	6-RC-19-1502	X				11.26

SURREY POWER STATION, UNIT 1

QA CATEGORY I PIPING
LINE TABLESystem/IN

<u>Line Number</u>	<u>Verification</u>					<u>Notes</u>
	A	B	C	D	E	
6-RC-20-602	X					11.27
6-RC-21-1502	X					11.28
12-RC-22-1502	X					11.29
12-RC-23-1502	X					11.30
12-RC-24-1502	X					11.31
3/8-RC-32-1CN9				X		11.32
3/8-RC-33-1CN9				X		11.33
4-RC-34-1502	X					11.34
3-RC-35-1502	X					11.35
12-RC-36-602	X					11.36
6-RC-37-1502	X					11.37
6-RC-38-1502	X					11.38
6-RC-39-1502	X					11.39
6-RC-40-602	X					11.40
6-RC-41-602	X					11.41
6-RC-42-602	X					11.42
2-RC-44-1502				X		11.43
2-RC-45-1502				X		11.44
2-RC-46-1502				X		11.45
3/4-RC-47-1502				X		11.46
3/4-RC-48-1502				X		11.47
3/4-RC-49-1502				X		11.48
3/4-RC-50-1502				X		11.49
3/4-RC-51-1502				X		11.50
2-RC-53-1502				X		11.51
2-RC-55-1502				X		11.52
2-RC-56-1502				X		11.53
2-RC-57-1502				X		11.54
2-RC-58-1502				X		11.55
2-RC-59-1502				X		11.56
1 1/2-RC-60-1502				X		11.57
3-RC-61-1502	X					11.58
6-RC-62-602	X					12.1
3/4-RC-63-1502				X		12.2
3/4-RC-64-1502				X		12.3
3/4-RC-65-1502				X		12.4
3/4-RC-66-1502				X		12.5
3/4-RC-67-1502				X		12.6
3/4-RC-92-1502				X		12.7
3/4-RC-93-1502				X		12.8

SURREY POWER STATION, UNIT 1

QA CATEGORY I PIPING
LINE TABLE

System/PM	Line Number	Verification					Notes
		A	B	C	D	E	
	3/4-RC-94-1502				X		12.9
	3/4-RC-95-1502				X		12.10
	3/4-RC-96-1502				X		12.11
	3/4-RC-97-1502				X		12.12
	3/4-RC-98-1502				X		12.13
	3/4-RC-99-1502				X		12.14
	3/4-RC-100-1502				X		12.15
	3/4-RC-101-1502				X		12.16
	3/4-RC-102-1502				X		12.17
	3/4-RC-103-1502				X		12.18
	1 1/2-RC-104-1502				X		12.19
	1 1/2-RC-105-1502				X		12.20
	3/4-RC-106-1502				X		12.21
	3/8-RC-107-1CN9				X		12.22
	3/8-RC-108-1CN9				X		12.23
	2-RC-112-1502				X		12.24
	2-RC-113-2501R				X		12.25
	3/4-RC-114-1502				X		12.26
	2-RC-115-1502				X		12.27
	3-RC-116-1502		X				12.28
	2-RC-117-1502		X				12.29
	3/4-RC-118-1502		X				12.30
	2-RC-119-2501R		X				12.31
	3/4-RC-120-1502		X				12.32
	2-RC-121-1502		X				12.33
	1-RC-122-1502		X				12.34
	1-RC-123-1502		X				12.35
	1-RC-124-1502		X				12.36
	1 1/2-RC-125-1502		X				12.37
	2-RC-126-1502		X				12.38
	3/4-RC-127-1502		X				12.39
	2-RC-128-2501R		X				12.40
	2-RC-129-1502		X				12.41
	3/4-RC-130-1502		X				12.42
	3-RC-131-1502		X				12.43
	2-RC-132-1502		X				12.44
	2-RC-133-2501R		X				12.45
	3/4-RC-134-1502		X				12.46
	3/4-RC-135-1502		X				12.47
	1-RC-136-1502		X				12.48

SURRY POWER STATION, UNIT 1

QA CATEGORY I PIPING
LINE TABLESystem/TM

<u>Line Number</u>	<u>Verification</u>					<u>Notes</u>
	A	B	C	D	E	
1-RC-137-1502				X		12.49
1-RC-138-1502				X		12.50
2-RC-139-1502				X		12.51
3/4-RC-140-1502				X		12.52
1 1/2-RC-141-1502				X		12.53
2-RC-142-1502				X		12.54
3/4-RC-143-1502				X		12.55
2-RC-144-2501R				X		12.56
3/4-RC-145-1502				X		12.57
2-RC-146-1502				X		12.58
3-RC-147-1502			X			13.1
2-RC-148-1502				X		13.2
3/4-RC-149-1502				X		13.3
2-RC-151-1502				X		13.4
3/4-RC-152-1502				X		13.5
2-RC-153-1502				X		13.6
1-RC-154-1502				X		13.7
1-RC-155-1502				X		13.8
1-RC-156-1502				X		13.9
2-RC-159-152				X		13.10
3/4-RC-161-1502				X		13.11
3/4-RC-162-1502				X		13.12
3/4-RC-163-1502				X		13.13
3/4-RC-165-1502				X		13.14
3/4-RC-166-1502				X		13.15
3/4-RC-167-152				X		13.16
3/4-RC-168-602				X		13.17
3/4-RC-169-152				X		13.18
3/4-RC-170-152				X		13.19
3/4-RC-171-152				X		13.20
3/4-RC-172-1502				X		13.21
3/4-RC-173-1502				X		13.22
3/4-RC-174-1502				X		13.23
1-RC-192-1502				X		13.24
2-RC-198-1502				X		13.25
2-RC-199-1502				X		13.26
2-RC-200-1502				X		13.27
3/4-RC-201-151				X		13.28
3/4-RC-225-1502				X		13.29
3/4-RC-226-1502				X		13.30

SURREY POWER STATION, UNIT 1

QA CATEGORY I PIPING
LINE TABLE

System/PM	Line Number	Verification					Notes
		A	B	C	D	E	
	3/4-RC-227-1502				X		13.31
	3/4-RC-228-1502				X		13.32
	3/4-RC-229-1502				X		13.33
	3/4-RC-230-1502				X		13.34
Residual Heat Removal/ PM-104A	14-RH-1-1502	X	1				13.37
	14-RH-2-602	X	3				13.38
	2-RH-3-602				X		13.39
	10-RH-4-602	X	3				13.40
	10-RH-5-602	X	3				13.41
	12-RH-6-602	X	3				13.43
	10-RH-7-602	X	3				13.44
	10-RH-8-602	X	3				13.45
	10-RH-9-602	X	3				13.46
	10-RH-10-602	X	3				13.47
	1-RH-11-602				X		13.48
	12-RH-12-602	X	3				13.49
	3-RH-13-602	X	3				13.50
	6-RH-14-602	X	3				13.51
	4-RH-15-152	X	5				13.52
	10-RH-16-1502	X	1				13.53
	10-RH-17-1502	X	1				13.54
	14-RH-18-602	X	3				13.55
	12-RH-19-602	X	3				13.56
	6-RH-20-152	X	5				13.57
	3/4-RH-21-602				X		13.58
	3/4-RH-22-602				X		14.1
							From 12"-RH-19-602 to 3/4"-T58
	10-RH-23-602	X	3				14.2
	3/4-RH-24-602				X		14.3
	3/4-RH-25-602				X		14.4
	3/8-RH-51-602				X		14.5
	3/8-RH-52-602				X		14.6
Chemical Volume and Control/PM-105A,B&C	3-CH-1-1502				X	1	14.7
	3-CH-2-1503	X	4				14.8
	3-CH-3-1503	X	4				14.9

SURRY POWER STATION, UNIT 1

QA CATEGORY I PIPING
LINE TABLESystem/TK

<u>Line Number</u>	<u>Verification</u>					<u>Notes</u>
	A	B	C	D	E	
2-CH-5-1502				X		14.13
2-CH-6-602				X		14.14
2-CH-7-602				X		14.15
2-CH-8-1503				X		14.16
2-CH-9-1503				X		14.17
2-CH-10-1503				X		14.18
3-CH-11-1503		X4				14.19
2-CII-12-1503				X		14.20
2-CII-13-1503				X		14.21
2-CII-14-1502				X		14.22
2-CH-15-1502				X		14.23
2-CH-16-1502				X		14.24
8-CH-17-152		X4				14.25
6-CII-18-152		X4				14.26
6-CII-19-152		X4				14.27
3/4-CII-20-1503				X		14.28
2-CII-21-1503				X		14.29
2-CII-22-1503				X		14.30
3-CH-23-152		X4				14.31
3-CH-24-152		X4				14.32
3-CII-25-152		X4				14.33
2-CH-26-152				X		14.34
2-CH-27-152				X		14.35
2-CII-28-152				X		14.36
2-CII-29-152				X		14.37
3-CII-30-152		X4				14.38
2-CII-31-152				X		14.39
2-CII-32-152				X		14.40
2-CII-33-152				X		14.41
2-CII-34-152				X		14.42
2-CH-35-152				X		14.43
2-CH-36-152				X		14.44
2-CH-37-152				X		14.45
2-CII-38-152				X		14.46
2-CII-39-152				X		14.47
2-CII-40-152				X		14.48
2-CII-41-152				X		14.49
						QA I from 3-CH-44-152 to valve VDS-15Y 14.50
2-CH-42-152				X		QA I from 3-CH-45-152 to valve VDS-15Y 14.51
						14.52

SURRY POWER STATION, UNIT 1

QA CATEGORY I PIPING
LINE TABLESystem/PM

<u>Line Number</u>	<u>Verification</u>					<u>Notes</u>	
	A	B	C	D	E		
2-CH-43-152				X		QA I from 3-CH-46-152 to valve VDS-15Y	14.53 14.54
3-CH-44-152		X5				QA I from tank 1-CH-TK-1A to loop seal	14.55 14.56
3-CH-45-152		X6				QA I from tank 1-CH-TK-1B to loop seal	14.57 14.58
3-CH-46-152		X6				QA from tank 1-CH-TK-1C loop seal	15.1 15.2
3-CH-47-152		X4					15.3
3-CH-48-152		X4					15.4
3-CH-49-152		X4					15.5
3-CH-50-152		X4					15.6
3-CH-51-152		X4					15.7
2-CH-52-152				X			15.8
2-CH-53-152				X			15.9
1 1/2-CH-55-152				X			15.10
1-CH-56-152				X			15.11
1-CH-57-152				X			15.12
2-CH-58-152				X			15.13
2-CH-59-152				X			15.14
1-CH-60-152				X		QA I from 8"-CH-17 to valve 1-X42D	15.15 15.16
2-CH-61-152				X			15.17
2-CH-62-152				X			15.18
3-CH-63-152		X4					15.19
2-CH-64-152				X			15.20
3-CH-65-152			X5				15.21
3-CH-66-153			X5				15.22
3/4-CH-67-152				X			15.23
2-CH-68-1502				X			15.24
3-CH-69-1503		X4					15.25
3-CH-70-1503			X4				15.26
3-CH-71-1503			X4				15.27
6-CH-72-152	X4						15.28
3-CH-73-152		X4					15.29
2-CH-74-1503				X			15.30
2-CH-75-1503				X			15.31
2-CH-76-1503				X			15.32
2-CH-77-1503				X			15.33
2-CH-78-152				X			15.34

SURREY POWER

QA CATEGORY I PIPING
LINE TABLESystem/TM

<u>Line Number</u>	<u>Verification</u>					<u>Notes</u>
	A	B	C	D	E	
3-CII-79-1503			X			15.35
4-CII-80-1503	X	4				15.36
3-CII-81-1503	X	4				15.37
2-CII-82-1502			X			15.38
2-CII-83-1502			X			15.39
2-CII-84-1502			X			15.40
2-CII-85-602			X			15.41
2-CII-86-602			X			15.42
3-CII-87-152	X	4				15.43
2-CII-88-152			X			15.44
4-CII-89-1503	X	4				15.45
2-CII-90-1503			X			15.46
2-CII-91-1503			X			15.47
2-CII-92-1503			X			15.48
2-CII-93-1502			X			15.49
2-CII-94-1503			X			15.50
2-CII-95-1502			X			15.51
2-CII-96-1503			X			15.52
2-CII-97-1502			X			15.53
3/4-CII-98-1503			X			15.54
3-CII-99-152			X			15.55
3-CII-100-152	X	4				15.56
3/4-CII-101-1502			X			15.57
3/4-CII-102-1502			X			15.58
3/4-CII-103-1502			X			16.1
3/4-CII-105-1502			X			16.2
3/4-CII-106-1502			X			16.3
3/4-CII-108-1502			X			16.4
3/4-CII-109-1502			X			16.5
3/4-CII-111-1502			X			16.6
4-CII-112-152	X	4				16.7
3-CII-113-1503	X	4				16.8
2-CII-114-1503			X			16.9
3/4-CII-115-1503			X			16.10
3/4-CII-116-1503			X			16.11
2-CII-117-152			X			16.12
3-CII-118-152	X	4				16.13
3-CII-119-152	X	4				16.14
2-CII-120-152			X			16.15
3-CII-121-152	X	4				16.16

SURREY POWER STATION, UNIT 1

QA CATEGORY I PIPING
LINE TABLESystem/TM

<u>Line Number</u>	<u>Verification</u>					<u>Notes</u>
	A	B	C	D	E	
2-CH-122-152				X		16.17
3/4-CH-123-1502				X		16.18
3/4-CH-124-152				X		16.19
2-CH-125-602				X		16.20
2-CH-126-152				X		16.21
2-CH-127-152				X		16.22
2-CH-128-152				X		16.23
3-CH-129-152	X4					16.24
2-CH-130-152				X		16.25
3-CH-131-152	X4					16.26
2-CH-132-152				X		16.27
3-CH-133-152	X4					16.28
2-CH-134-152				X		16.29
3-CH-135-152	X4					16.30
3-CH-136-152	X4					16.31
2-CH-137-152				X		16.32
2-CH-138-152				X		16.33
1-CH-139-152				X		16.34
1-CH-140-152				X		16.35
2-CH-141-152				X		16.36
2-CH-142-152				X		16.37
2-CH-143-152				X		16.38
2-CH-143-152				X		16.39
3/4-CH-145-152				X		16.40
3/4-CH-146-152				X		16.41
3/4-CH-147-152				X		16.42
2-CH-148-152				X		16.43
2-CH-149-152				X		16.44
2-CH-150-152				X		16.45
1-CH-152-152				X		16.46
1-CG-153-152				X		16.47
1-CH-154-152				X		16.48
2-CH-155-152				X		16.49
2-CH-156-152				X		16.50
2-CH-158-152				X		16.51
2-CH-159-152				X		16.52
2-CH-160-151				X		16.53
2-CH-162-151				X		16.54
1-CH-163-152				X		16.55
3/4-CH-164-152				X		16.56

SURREY POWER STATION, UNIT 1

QA CATEGORY I PIPING
LINE TABLESystem/TM

<u>Line Number</u>	<u>Verification</u>					<u>Notes</u>	
	A	B	C	D	E		
1-CH-165-152				X			16.57
3/4-CH-166-1503				X			16.58
3/4-CH-167-1503				X			17.1
2-CH-168-152				X			17.2
2-CH-169-152				X			17.3
2-CH-170-152				X			17.4
2-CH-171-152				X			17.5
3/4-CH-172-152				X			17.6
2-CH-173-152				X			17.7
3/4-CH-174-152				X			17.8
2-CH-175-152				X			17.9
3/4-CH-176-152				X			17.10
2-CH-177-152				X		QA I from line 2-CH-167-152 to valve	17.11
						2-X42D	17.12
3/4-CH-178-152				X		QA I from tank 1-CH-TK-5 to valve	17.13
						1-X42D	17.14
3/4-CH-179-152				X		QA I from line 2-CH-34-152 to valve	17.15
						3/4-X42D	17.16
3/4-CH-180-152				X			17.17
3/4-CH-181-152				X		QA I from line 2-CH-34-152 to valve	17.18
						3/4-X42D	17.19
3/4-CH-182-152				X			17.20
3/4-CH-183-152				X			17.21
3/4-CH-184-152				X			17.22
3/4-CH-185-152				X			17.23
3/4-CH-186-152				X			17.24
3/4-CH-187-152				X			17.25
3/4-CH-188-1503				X			17.26
3/4-CH-189-1503				X			17.27
3/4-CH-190-152				X			17.28
3-CH-191-152		X4					17.29
3-CH-192-152		X4					17.30
3-CH-193-152		X4					17.31
4-CH-194-152		X4					17.32
2-CH-195-152				X		QA I from 1-CH-BL-1 to valve 2-X42D	17.33
							17.34
							17.35
							17.36
							17.37
							17.38

SURREY POWER STATION, UNIT 1

QA CATEGORY I PIPING
LINE TABLESystem/TM

<u>Line Number</u>	<u>Verification</u>					<u>Notes</u>	
	A	B	C	D	E		
2-CH-196-152				X			17.39
3/4-CH-197-152				X		QA I from 2-CH-196-152 to valve 3/4-X42D	17.40
2-CH-199-152				X			17.41
3-CH-200-152			X4				17.42
6-CH-201-152	X4						17.43
6-CH-202-152	X4						17.44
6-CH-203-152	X4						17.45
8-CH-204-152	X4						17.46
8-CH-205-152	X4						17.47
8-CH-206-152	X4						17.48
3/4-CH-207-152				X			17.49
3/4-CH-208-152				X			17.50
3/4-CH-209-152				X			17.51
2-CH-210-152				X			17.52
2-CH-211-152				X			17.53
2-CH-212-152				X			17.54
2-CH-213-152				X			17.55
2-CH-214-152				X			17.56
2-CH-215-152				X			17.57
2-CH-216-152				X			17.58
3/4-CH-217-152				X			18.1
3/4-CH-218-152				X			18.2
3/4-CH-219-152				X			18.3
1-CH-220-152				X			18.4
1-CH-221-152				X			18.5
3/4-CH-223-1502				X			18.6
3/4-CH-224-152				X			18.7
3/4-CH-225-152				X			18.8
3/4-CH-226-152				X			18.9
1-CH-229-152				X			19.10
1-CH-230-152				X			18.11
2-CH-231-1503				X			18.12
2-CH-232-602				X			18.13
2-CH-233-602				X			18.14
3/4-CH-234-152				X			18.15
1/2-CH-236-152				X			18.16
1-CH-237-152				X			18.17
3-CH-238-152			X4				18.18
1/2-CH-239-152				X			18.19
							18.20

SURREY POWER STATION, UNIT 1

QA CATEGORY I PIPING
LINE TABLESystem/TM

<u>Line Number</u>	<u>Verification</u>					<u>Notes</u>
	A	B	C	D	E	
3/4-CH-240-1502				X		18.21
2-CH-241-152				X		18.22
1-CH-242-152				X		18.23
1-CH-243-152				X		18.24
1-CH-244-152				X		18.25
1-CH-245-152				X		18.26
1-CH-246-152				X		18.27
2-CH-247-152				X		18.28
2-CH-248-152				X		18.29
3-CH-251-152			X4			18.30
3-CH-252-152			X4			18.31
3/4-CH-260-1503				X		18.32
1-CH-261-1502				X		18.33
1-CH-262-1502				X		18.34
1-CH-263-1502				X		18.35
1-CH-264-1502				X		18.36
1-CH-265-1502				X		18.37
1-CH-266-1502				X		18.38
3/4-CH-276-1503				X		18.39
Safety Injection 1FM-106A&B			*4			18.41
			*4			18.42
						18.43
			*6			18.44
		X6				18.45
		X6				18.46
				X		18.47
				X		18.48
				X		18.49
				X		18.50
		X4				18.51
		X4				18.52
		X4				18.53
		X4				18.54
		X4				18.55
		X4				18.56
				X		18.57
				X		18.58
				X		19.1

*See MSK-127A&B

SURRY POWER STATION, UNIT 1

QA CATEGORY 1 PIPING
LINE TABLESystem/TN

<u>Line Number</u>	<u>Verification</u>					<u>Notes</u>	
	A	B	C	D	E		
3/4-SI-27-602				X			19.2
3/4-SI-28-602				X			19.3
3/4-SI-29-602				X			19.4
3/4-SI-30-152				X			19.5
3/4-SI-33-1502				X			19.6
3/4-SI-34-1502				X			19.7
3/4-SI-35-1502				X			19.8
3/4-SI-36-602				X		From 2"-SI-63-602 to 3/4"-T58	19.9
3/4-SI-37-602				X		From 2"-SI-65-602 to 3/4"-T58	19.10
3/4-SI-38-602				X		From 2"-SI-67-602 to 3/4"-T58	19.11
3/4-SI-39-1502				X			19.12
3/4-SI-40-1502				X			19.13
3/4-SI-41-1502				X			19.14
3/4-SI-42-602				X			19.15
3/4-SI-43-602				X			19.16
3/4-SI-44-602				X			19.17
12-SI-45-1502	X						19.18
12-SI-46-1502	X						19.19
12-SI-47-1502	X						19.20
6-SI-48-1502	X						19.21
6-SI-49-1502	X						19.22
6-SI-50-1502	X						19.23
3/4-SI-55-153				X			19.24
3/4-SI-56-153				X			19.25
3-SI-57-1503		X4					19.26
3-SI-58-1503		X4					19.27
3/4-SI-59-1503				X			19.28
1-SI-60-1503				X			19.29
1-SI-61-602				X			19.30
1-SI-62-152				X			19.31
2-SI-63-602				X			19.32
1-SI-64-152				X			19.33
2-SI-65-602				X			19.34
1-SI-66-152				X			19.35
2-SI-67-602				X			19.36
3/4-SI-68-1503				X			19.37
2,3-SI-70-1503			X3				19.38
2-SI-71-1503				X			19.39
2,3-SI-72-1503			X3				19.40
2-SI-73-1503				X			19.41

SURRY POWER STATION, UNIT 1

QA CATEGORY I PIPING
LINE TABLESystem/PM

<u>Line Number</u>	<u>Verification</u>					<u>Notes</u>
	A	B	C	D	E	
2-SI-74-1502				X		19.42
2-SI-75-1502				X		19.43
2-SI-76-1503				X		19.44
2-SI-77-1503				X		19.45
6-SI-78-152	X4					19.46
2-SI-79-1502				X		19.47
2-SI-80-1502				X		19.48
2-SI-81-1502				X		19.49
1-SI-82-1503				X		19.50
10-SI-83-152	X4					19.51
10-SI-84-152	X4					19.52
2-SI-85-1502				X		19.53
1-SI-86-152				X		19.54
1-SI-87-1503				X		19.55
3-SI-90-1503		X4				19.56
8-SI-92-153	X4					19.57
3-SI-93-1503				X		19.58
1-SI-95-601				X		20.1
1-SI-96-601				X		20.2
1-SI-97-602				X		20.3
1-SI-98-601				X		20.4
1-SI-99-602				X		20.5
1-SI-100-602				X		20.6
1-SI-101-601				X		20.7
8-SI-102-152	X6					20.8
1-SI-103-152			X			20.9
1-SI-105-601				X		20.10
10-SI-106-153		*4				20.11
10-SI-107-153		*4				20.12
4-SI-130-152		X4				20.13
2-SI-131-152				X		20.14
3/4-SI-132-153				X		20.15
1/2-SI-133-N9				X		20.16
1/2-SI-134-N9				X		20.17
1/2-SI-135-N9				X		20.18
1/2-SI-136-N9				X		20.19
3/4-SI-137-153				X		20.20
1/2-SI-138-N9				X		20.21
1/2-SI-139-N9				X		20.22
1/2-SI-140-N9				X		20.23

*See MRS-127A

SURREY POWER STATION, UNIT 1

QA CATEGORY I PIPING
LINE TABLE

System/TH	Line Number	Verification					Notes	
		A	B	C	D	E		
	1/2-SI-141-N9				X			20.24
	6-SI-143-1502	X	1					20.25
	6-SI-144-1502	X	1					20.26
	6-SI-145-1502	X	1					20.27
	3-SI-146-1503			X	3			20.28
	3-SI-147-1503			X	3			20.29
	10-SI-148-153	X	4					20.30
	10-SI-149-153	X	4					20.31
	10-SI-150-153	X	4					20.32
	10-SI-151-153	X	4					20.33
	10-SI-152-1502	X	2					20.34
	6-SI-153-1502	X	1					20.35
	3/4-SI-154-1502				X			20.36
	3/4-SI-155-1502				X			20.37
	3/4-SI-156-1502				X			20.38
	3/4-SI-157-1502				X			20.39
	3/4-SI-158-1502				X			20.40
	3/4-SI-159-1502				X			20.41
	3/4-SI-160-153				X			20.42
	1-SI-161-1503				X			20.43
	3/4-SI-162-153				X			20.44
	8-SI-170-153	X	6					20.45
	8-SI-171-153	X	6					20.46
Reactor Cavity Purification /TH-110A	3-RL-1-152			X	3		At Cont. Penetration Between Both VDS-15Y	20.48 20.49
	3-RL-6-152			X	3		At Cont. Penetration Between Both VDS-15Y	20.50 20.51
Chemical Feed /TH-121A	3/4-CFPD-1-601				X		From 14-WFPD-17 to turb. bldg. wall	20.53
	3/4-CFPD-2-601				X		From 14-WFPD-13 to turb. bldg. wall	20.54
	3/4-CFPD-3-601				X		From 14-WFPD-9 to turb. bldg. wall	20.55
Steam Generator Blowdown /TH-122A	3-WGCB-1-601			X	3		To and Including TV-BD-100B	20.57
	3-WGCB-2-601			X	3		To and Including TV-DD-100D	20.58
	3-WGCB-3-601			X	3		To and Including TV-DD-100F	21.1

SURRY POWER STATION, UNIT 1

QA CATEGORY I PIPING
LINE TABLE

System/FM	Line Number	Verification					Notes
		A	B	C	D	E	
Gaseous Waste Disposal /FM-107A6B	3/4-GW-1-152				X		21.3
	3/4-GW-4-152				X		21.4
	3/4-GW-5-152				X		21.5
	3/4-GW-6-152				X		21.6
	3/4-GW-7-152				X		21.7
	3/4-GW-8-152				X		21.8
	3/4-GW-9-152				X		21.9
	3/4-GW-10-152				X		21.10
	3/4-GW-11-152				X		21.11
	6-GW-14-154		X6				21.12
	6-GW-15-154		X6				21.13
	6-GW-16-154		X6				21.14
	6-GW-18-154		X6				21.15
	6-GW-19-154		X6				21.16
	6-GW-20-154		X6				21.17
	3-GW-21-154		X6				21.18
	2-GW-22-154				X		21.19
	1 1/2-GW-23-154				X		21.20
	2-GW-24-154				X		21.21
	2-GW-25-154				X		21.22
	2-GW-26-154				X		21.23
	2-GW-27-154				X		21.24
	2-GW-28-154				X		21.25
	4-GW-30-154		X6				21.26
	6-GW-33-154		X6				21.27
	3-GW-34-154		X6				21.28
	3-GW-35-154		X6				21.29
	3-GW-36-154		X6				21.30
	3-GW-37-154		X6				21.31
	3-GW-38-153		X6				21.32
	3-GW-39-153		X6				21.33
	3-GW-40-153		X6				21.34
	3-GW-41-153		X6				21.35
	4-GW-50-154		X6				21.36
	3-GW-51-154		X6				21.37
	3-GW-52-154		X6				21.38
	3-GW-55-154		X6				21.39
	4-GW-56-154				X		21.40
	1-GW-57-154				X		21.41
	1 1/2-GW-58-154				X		21.42

SURREY POWER STATION, UNIT 1

QA CATEGORY 1 PIPING
LINE TABLESystem/TM

<u>Line Number</u>	<u>Verification</u>					<u>Notes</u>	
	A	B	C	D	E		
1-GW-59-152				X			21.43
1 1/2-GW-60-152				X			21.44
3/4-GW-61-152				X		From 1 st -DA-54-152 to VDS-15Y	21.45
1 1/2-GW-62-152				X			21.46
3/4-GW-63-152				X			21.47
3/4-GW-64-152				X			21.48
3/4-GW-66-152				X			21.49
1-GW-67-152				X			21.50
1-GW-68-154				X			21.51
1-GW-69-154				X			21.52
1-GW-70-154				X			21.53
3/4-GW-71-152				X			21.54
2-GW-72-152				X			21.55
2-GW-73-152				X			21.56
1 1/2-GW-76-152				X			21.57
3-GW-78-154		X6					21.58
1-GW-79-152				X			22.1
1 1/2-GW-80-152				X			22.2
1 1/2-GW-81-N8				X			22.3
1-GW-82-152				X		From 1-GW-TK-1B to PCV-GW-104B	22.4
6-GW-83-154		X6					22.5
1-GW-84-152				X		From 1-GW-TK-1A to PCV-GW-104A	22.6
2-GW-88-154				X			22.7
3-GW-90-154		X6					22.8
4-GW-91-154		X6					22.9
2-GW-92-154				X			22.10
2-GW-93-154				X			22.11
2-GW-203-154				X			22.12
2-GW-204-154				X			22.13
2-GW-204-154				X			22.14
2-GW-205-154				X			22.15
2-GW-206-154				X			22.16
2-GW-207-154				X			22.17
2-GW-208-154				X			22.18
2-GW-209-154				X			22.19
2-GW-210-154				X			22.20
2-GW-211-154				X			22.21
3/4-GW-213-154				X			22.22
3/4-GW-214-154				X			22.23
3/4-GW-215-154				X			22.24

SURREY POWER STATION, UNIT 1

QA CATEGORY I PIPING
LINE TABLESystem/TM

<u>Line Number</u>	<u>Verification</u>					<u>Notes</u>
	A	B	C	D	E	
3/4-GW-216-154				X		22.25
2-GW-217-154				X		22.26
2-GW-218-154				X		22.27
2-GW-219-154				X		22.28
2-GW-220-154				X		22.29
2-GW-221-154				X		22.30
2-GW-222-154				X		22.31
2-GW-224-154				X		22.32
2-GW-225-154				X		22.33
2-GW-226-154				X		22.34
3/4-GW-227-154				X		22.35
3/4-GW-228-154				X		22.36
3/4-GW-229-154				X		22.37
3/4-GW-230-154				X		22.38
1/2-GW-231-N8				X		22.39
1/2-GW-232-N8				X		22.40
1/2-GW-233-N8				X		22.41
1/2-GW-234-N8				X		22.42
1/2-GW-235-N8				X		22.43
1/2-GW-236-N8				X		22.44
1/2-GW-237-N8				X		22.45
1/2-GW-238-N8				X		22.46

SURRY POWER STATION
UNIT 2

QA CATEGORY I PIPING
LINE TABLE

NOTES AND LEGEND

All Category I Piping is listed by system name and flow diagram (FM).

PRIORITY IDENTIFICATION

AUG 16 1979

1. Q1 INSIDE CONTAINMENT
2. Q1 OUTSIDE CONTAINMENT
3. Q2 INSIDE CONTAINMENT
4. Q2 OUTSIDE CONTAINMENT
5. Q3 INSIDE CONTAINMENT
6. Q3 OUTSIDE CONTAINMENT

Lines which are in more than one category are indicated by the higher priority.

The Verification Category identified in the line table is in response to as-built inspection requirements of safety related piping addressed in IE Bulletin No. 79-14 (7-2-79)

- A. Piping verification completed as part of the "Show Cause" Pipe Stress Reanalysis Effort.
- B. Piping to be inspected as described in Item 2 of IE Bulletin No. 79-14.
- C. Piping to be inspected as described in Item 3 of IE Bulletin No. 79-14.
- D. Piping 2 inch and less which does not require as-built inspection (IE Bulletin No. 79-14 Rev. 1)
- E. Piping buried in concrete or underground.

▲ Indicates lines shown on Unit 1 drawings and under Unit 1 scope.

SURREY POWER STATION, UNIT 2

QA CATEGORY I PIPING
LINE TABLE

System/FM	Line Number	Verification					Notes	Rev.	
		A	B	C	D	E			
Main Steam/FM-14A	30-SHP-101-601	X	3						1.18
	30-SHP-102-601	X	3						1.19
	30-SHP-103-601	X	3						1.20
	30-SHP-122-601	X	4						1.21
	30-SHP-123-601	X	4						1.22
	4-SHP-124-601	X	4						1.23
	4-SHP-125-601	X	6						1.24
	4-SHP-126-601	X	6						1.25
	4-SHP-127-601	X	6						1.26
	3-SHP-128-601	X	6						1.27
	3-SHP-129-601	X	6						1.28
	3-SHP-130-601	X	6						1.29
	3-SHP-131-601	X	6						1.30
	3-SHP-132-601	X	6						1.31
	4-SHP-137-601	X	4						1.32
	4-SHP-138-601	X	4						1.33
	4-SHP-139-601	X	4						1.34
	3-SHP-157-601	X	6						1.35
	6-SHP-145-601		X	4					1.36
	6-SHP-146-601		X	4					1.37
	6-SHP-147-601		X	4					1.38
High Pressure Steam Drains/ FM-14A	3"-SHPD-105-601	X	6				To and including TV-MS-209	1	1.40
									1.41
	1 1/2"-SHPD-106-601		X					1	1.42
	1 1/2"-SHPD-107-601		X					1	1.43
	1 1/2"-SHPD-108-601		X					1	1.44
	2-SHPD-116-601		X						1.45
Feedwater/FM-18A	14-WFPD-109-601	X	3				From 2-RC-E-1C to and including second check valve		1.47
									1.48
	14-WFPD-113-601	X	3				From 2-RC-E-1B to and including second check valve		1.49
									1.50
	14-WFPD-117-601	X	3				From 2-RC-E-1A to and including second check valve		1.51
									1.52
Auxiliary Feedwater/FM-18A	6-WAPD-101-601	X	5					1	1.54

Revision 1
8-10-79
Page 2

SURREY POWER STATION, UNIT 2

QA CATEGORY I PIPING
LINE TABLESystem/FMLine NumberVerification

A B C D E

NotesRev.

6-WAPD-102-601	X5						1.55
6-WAPD-103-601	X6						1.56
4-WAPD-104-601	X5						1.57
4-WAPD-105-601	X6						1.58
4-WAPD-106-601	X6						2.1
4-WAPD-107-601	X6						2.2
4-WAPD-108-601	X6						2.3
3-WAPD-109-601	X5						2.4
3-WAPD-110-601	X5						2.5
3-WAPD-111-601	X5						2.6
3-WAPD-112-601	X5						2.7
3-WAPD-113-601	X5					1	2.8
3-WAPD-114-601	X5						2.9
1-WAPD-115-601				X			2.10
1-WAPD-116-601				X			2.11
1-WAPD-117-601				X			2.12
1-WAPD-118-601				X			2.13
2-WAPD-119-601				X			2.14
1-WAPD-120-601				X			2.15
1-WAPD-121-601				X			2.16
6-WCMU-104-151	X6					1	2.18
8-WCMU-105-151	X6						2.19
6-WCMU-106-151	X6						2.20
6-WCMU-107-151	X6						2.21
6-WCMU-108-151	X6						2.22
4-WCMU-109-151	X6						2.23
4-WCMU-110-151	X6						2.24
6-WCMU-111-151	X5						2.25
6-WCMU-139-151	X6						2.26
6-WCMU-150-151	X6						2.27
6-WCMU-151-151	X6						2.28
6-WCMU-152-151	X6						2.29
6-WCMU-153-151	X6					1	2.30
6-WCMU-154-151	X6						2.31
6-WCMU-155-151	X6						2.32
6-WCMU-156-151	X6						2.33
6-WCMU-160-151	X6					1	2.34
2-WCMU-161-151				X			2.35

SURREY POWER STATION, UNIT 2

QA CATEGORY I PIPING
LINE TABLE

<u>System/FM</u>	<u>Line Number</u>	<u>Verification</u>					<u>Notes</u>	<u>Rev.</u>	
		A	B	C	D	E			
	2-WCMU-162-151				X				2.36
	6-WAPD-150-151	X5	X5				From 6"-WAPD-102 to MOV-FW-260A	1	2.38
	6-WAPD-151-151	X5						1	2.39
	6-WAPD-152-151		X5				From 6"-WAPD-150 to MOV-FW-260B	1	2.40
	6-WAPD-50-151	X6					From 6"-WAPD-101 to MOV-FW-160A	1	2.41
	6-WAPD-52-151	X5					From 6"-WAPD-102 to MOV-FW-160B	1	2.42
Service Water/FM-21A	48-WS-101-10	X6						1	2.44
	48-WS-102-10	X6						1	2.45
	30-WS-121-10	X6							2.46
	30-WS-122-10	X6							2.47
	30-WS-123-10	X6							2.48
	30-WS-124-10	X6							2.49
	24-WS-126-10	X6	X6						2.50
	24-WS-128-10	X6	X6						2.51
	24-WS-130-10	X6	X6						2.52
	24-WS-132-10	X6	X6						2.53
	24-WS-133-10	X6	X6						2.54
	24-WS-134-10	X6	X6						2.55
	24-WS-135-10	X6	X6						2.56
	24-WS-136-10	X6	X6						2.57
	30-WS-137-10	X6							2.58
	30-WS-138-10	X6							3.1
	96-WC-101-10				X				3.2
	96-WC-102-10				X				3.3
	96-WC-103-10				X				3.4
	96-WC-104-10				X				3.5
Service Water/FM-21B	2-WS-170-136				X				3.7
	2-WS-171-136				X				3.8
	2-WS-172-136				X				3.9
	2-WS-173-136				X				3.10
	2-WS-174-21B				X				3.11
	2-WS-175-21B				X				3.12
	2-WS-176-21B				X				3.13
	2-WS-177-21B				X				3.14

SURRY POWER STATION, UNIT 2

QA CATEGORY I PIPING
LINE TABLE

System/FM	Line Number	Verification					Notes	Rev.
		A	B	C	D	E		
	2-WS-178-136				X			3.15
	2-WS-179-21B				X			3.16
	2-WS-180-21B				X			3.17
	1 1/2-WS-181-21B				X			3.18
	1 1/2-WS-182-21B				X			3.19
	2-WS-183-21B				X			3.20
	1 1/2-WS-184-21B				X			3.21
	1 1/2-WS-185-21B				X			3.22
	1 1/2-WS-186-21B				X			3.23
	1 1/2-WS-187-21B				X			3.24
	2-WS-188-21B				X			3.25
	2-WS-190-136				X			3.26
Component Cooling/ FM-22A&B (also see 11448-FM-22)	18-CC-7-121	X5						3.28
	18-CC-9-121	X5						3.29
	18-CC-14-121	X5						3.30
	18-CC-15-121	X5						3.31
	▲ 10,14-CC-72-121	X0						3.32
	▲ 3-CC-127-151	X1					From 8"-CC-143 to VGW-15A	1 3.33
	▲ 3-CC-131-151	X1						1 3.34
	▲ 10,14-CC-143-121	X0						3.35
	▲ 8,4-CC-144-151	X0						3.36
	▲ 6-CC-145-151	X0						3.37
	▲ 6-CC-146-151	X0						3.38
	▲ 4-8-CC-148-151	X6						3.39
	▲ 3-CC-151-151	X1					From 18"-CC-7 to VGW-15A	1 3.40
	▲ 3-CC-152-151	X6					From 18"-CC-14 to VGW-15A	1 3.41
	▲ 6,4-CC-153-151	X4					From cont. penetration to VGW-15A	1 3.42
	▲ 8-CC-153-151	X6					From 10"-CC-161 to HCV-CC-201A	1 3.43
	▲ 6,4-CC-154-151	X4					From cont. penetration to VGW-15A	1 3.44
	▲ 6-CC-155-151	X4					From cont. penetration to VGW-15A	1 3.45
	▲ 6,4-CC-156-151	X4					From cont. penetration to TV-CC-210A	1 3.46
	▲ 8-CC-156-151	X6					From 18"-CC-14 to HCV-CC-201B	1 3.47
	▲ 6-CC-159-151	X4					From cont. penetration to TV-CC-210B	1 3.48
	▲ 6-CC-160-151	X4					From Cont. penetration to TV-CC-210C	1 3.49
	6,2 1/2-CC-161-121	X5					Inside Containment	1 3.50
	▲ 10,6-CC-161-121	X6					Outside Containment	1 3.51
	3-CC-162-151	X5						3.52
	3-CC-163-151	X5						3.53

Revision 1
8-10-79
Page 5

SURRY POWER STATION, UNIT 2

QA CATEGORY I PIPING
LINE TABLE

<u>System/TM</u>	<u>Line Number</u>	<u>Verification</u>	<u>Notes</u>	<u>Rev.</u>
		A B C D E		
	1-CC-164-151		X	
	3,6-CC-165-151		X5	
	▲ 6-CC-165-151	X6		Inside Containment Outside Containment
	3-CC-166-151		X5	
	1-CC-167-151		X	
	2 1/2-CC-168-151		X5	
	6,2 1/2-CC-169-151		X5	Inside Containment Outside Containment
	▲ 10,6-CC-169-121	X6		
	3-CC-170-151		X5	
	3-CC-171-151		X5	
	1-CC-172-151		X	
	3,6-CC-173-151		X5	Inside Containment Outside Containment
	▲ 6-CC-173-151	X6		
	3-CC-174-1151		X5	
	1-CC-175-151		X	
	2 1/2-CC-176-151		X5	
	▲ 6-CC-177-151	X6		Outside Cont. Inside Cont.
	6,2 1/2-CC-177-151		X5	
	3-CC-178-151		X5	
	3-CC-179-151		X5	
	1-CC-180-151		X	
	▲ 6-CC-181-151	X6		Outside Cont.. Inside Cont.
	3,6,10-CC-181-151		X5	
	3-CC-182-151		X5	
	1-CC-183-151		X	
	▲ 2 1/2-CC-184-151	X6		Outside Cont. Inside Cont.
	2 1/2-CC-184-151		X5	
	6,4,1 1/2-CC-185-151	X5		
	1-CC-185-151		X	
	2-CC-186-151		X	
	3-CC-187-151	X5		
	3-CC-188-151	X5		
	1-CC-189-151		X	
	1-CC-190-151		X	
	3-CC-192-151	X5		
	4-CC-193-151	X5		
	1-CC-194-151		X	
	3-CC-208-151		X5	
	3-CC-209-151		X6	

Revision 1
8-10-79
Page 6

SURREY POWER STATION, UNIT 2

QA CATEGORY I PIPING
LINE TABLE

<u>System/FM</u>	<u>Line Number</u>	<u>Verification</u>					<u>Notes</u>	<u>Rev.</u>
		A	B	C	D	E		
	3-CC-210-151			X5				4.36
	3-CC-211-151			X5				4.37
	3-CC-212-151			X5				4.38
	3-CC-213-151			X5				4.39
	3-CC-214-151			X5				4.40
	1 1/2, 3/4-CC-215-151				X			4.41
	1 1/2, 1-CC-216-151				X			4.42
	2, 3/4-CC-217-151				X			4.43
	2, 1-CC-218-151				X			4.44
	6, 3-CC-219-151	X5						4.45
	3, 1-CC-251-151			X5				4.46
	3, 1-CC-252-151			X5				4.47
	1 1/2-CC-253-151				X			4.48
	1 1/2-CC-254-151				X			4.49
	1-CC-272-151				X			4.50
	2, 1-CC-275-151				X			4.51
	1-CC-410-903				X			4.52
	1 1/2-CC-411-903				X			4.53
	1-CC-412-903				X			4.54
	1-CC-413-903				X			4.55
	1 1/2-CC-414-903				X			4.56
	1-CC-415-903				X			4.57
	1-CC-416-903				X			4.58
	1 1/2-CC-417-903				X			5.1
	1-CC-418-903				X			5.2
	1-CC-419-903				X			5.3
	1 1/2-CC-420-903				X			5.4
	1-CC-421-903				X			5.5
	1-CC-422-903				X			5.6
	1 1/2-CC-423-903				X			5.7
	1-CC-424-903				X			5.8
	1-CC-425-903				X			5.9
	1-CC-426-903				X			5.10
	1-CC-427-903				X			5.11
	1-CC-428-903				X			5.12
	1 1/2-CC-429-903				X			5.13
	1-CC-430-903				X			5.14
	1-CC-431-903				X			5.15
	1 1/2-CC-432-903				X			5.16
	1-CC-433-903				X			5.17

SURRY POWER STATION, UNIT 2

QA CATEGORY I PIPING
LINE TABLE

System/FM	Line Number	Verification					Notes	Rev.
		A	B	C	D	E		
	1-CC-434-903				X			5.18
	1 1/2-CC-435-903				X			5.19
	1-CC-436-903				X			5.20
	1-CC-437-903				X			5.21
	1 1/2-CC-438-903				X			5.22
	1-CC-439-903				X			5.23
	1-CC-440-903				X			5.24
	1 1/2-CC-441-903				X			5.25
	1-CC-442-903				X			5.26
	1-CC-443-903				X			5.27
	1 1/2-CC-444-903				X			5.28
	1-CC-445-903				X			5.29
	1-CC-446-153				X			5.30
	1-CC-447-153				X			5.31
	1-CC-448-152				X			5.32
	1-CC-449-153				X			5.33
	1-CC-450-153				X			5.34
	1-CC-451-153				X			5.35
	1-CC-452-153				X			5.36
	1-CC-453-153				X			5.37
	1-CC-454-153				X			5.38
	1-CC-455-153				X			5.39
	1-CC-456-153				X			5.40
	1-CC-457-153				X			5.41
	1-CC-458-153				X			5.42
	1-CC-459-153				X			5.43
	1-CC-460-153				X			5.44
Instrument Air/FM-25B	2-ACC-109-21B				X		From the first VGM-20S outside containment to first VGM-20S inside containment	5.46
								5.47
	2-ACC-140-21B				X		From the first VGM-20S outside containment to first VGM-20S inside containment	5.48
								5.49
								5.50
								5.51
Sampling System FM-32A	2/8-SS-301-ICN9				X			5.53
	3/8-SS-302-ICN-9				X			5.54
	3/8-SS-303-ICN9				X			5.55

SURRY POWER STATION, UNIT 2

QA CATEGORY I PIPING
LINE TABLE

System/TM	Line Number	Verification					Notes	Rev.
		A	B	C	D	E		
	3/8-SS-304-ICN9				X			5.56
	3/8-SS-305-ICN9				X			5.57
	3/8-SS-306-1CN9				X			5.58
	3/8-SS-307-1CN9				X			6.1
	3/8-SS-399-ICN9				X		Between inside and outside containment isolation valves	6.2
								6.3
								6.4
	3/8-SS-400-ICN9				X			6.5
	3/8-SS-401-1CN9				X			6.6
	3/8-SS-402-1CN9				X			6.7
	3/8-SS-403-ICN9				X			
								6.9
Drains/TM-100A&B	3-DG-226-152		X6					6.10
	1-DG-227-152			X				6.11
	3-DG-241-152		X6					6.12
	3/4-DG-346-152							6.13
	3/4-DG-201-152				X			6.14
	2-DG-212-152				X			6.15
	2-DG-213-152				X			6.16
	2-DG-233-152				X			6.17
	3-DG-240-152		X5					6.18
	3-DG-224-152		X5					6.19
	2-DG-242-152				X			6.20
	2-DG-243-152				X			6.21
	1 1/2-DG-273-152				X			6.22
	3/4-DG-265-152				X			6.23
	3/4-DG-266-152				X			6.24
	3/4-DG-267-152				X			6.25
	3/4-DG-268-152				X			6.26
	3/4-DG-269-152				X			6.27
	3/4-SG-270-152				X			6.28
	2-DG-218-152				X		From check valve VCS-15X to 2"-DG-213-152	6.29
							From check valve VCS-15X to 2"-DG-213-152	6.30
	1 1/2-DG-247-152				X			6.31
								6.32
	2"-DG-343-152				X			6.33
	3/4-DG-321-152				X		From VDS-15Y to 3/4"- DG-323-152	6.34
							From VDS-15Y to 3/4"- DG-323-152	6.35
	3/4-DG-322-152				X			6.36

SURRY POWER STATION, UNIT 2

QA CATEGORY I PIPING
LINE TABLE

<u>System/FM</u>	<u>Line Number</u>	<u>Verification</u> A B C D E	<u>Notes</u>	<u>Rev.</u>
	3/4-DG-323-152	X	From VDS-15Y to 3"- DG-240-152	6.37 6.38 6.39
	2"-DA-121-152	X	From trip valve TV-DA200A	
Recirculation Spray/ FM-101A	10-RS-101-152	X3		6.41
	10-RS-102-153	X3		6.42
	10-RS-103-153	X3		6.43
	10-RS-104-153	X3		6.44
	12-RS-107-153		X	1 6.45
	12-RS-108-153		X	1 6.46
	10-RS-109-153	X3		6.47
	10-RS-110-153	X3		6.48
	10-RS-111-153	X3		6.49
	10-RS-112-153	X3		6.50
	1/2-RS-113-153		X From VGS-15A to 10"-RS-110 and 10"-RS-109	6.51 6.52 6.53
	4-RS-114-153	X4		6.54
	4-RS-115-153	X4		6.55
	8-RS-120-153	X3		6.56
	8-RS-121-153	X3		6.57
	8-RS-122-153	X3		1 6.58
	8-RS-123-153	X3		
	12-RS-124-153		X	1 7.2
Containment Spray/ FM-101A	12-CS-101-153	X4	X	7.4
	12-CS-102-153	X4	X	7.5
	10-CS-103-153	X3		7.6
	10-CS-104-153	X3		7.7
	4-CS-105-152	*G		1 7.8
	4-CS-106-152	*G		1 7.9
	1 1/2-CS-107-152		X	7.10
	1/2-CS-108-152		X	7.11
	6-CS-109-152	X3		7.12
			From 2-CS-TK-1 to	VDW-15Y 1 7.13
			From VDW-15Y to 2-CS-TK-1	1 7.14
	6-CS-114-152	X3		7.15
	8-CS-122-153	X3		7.16
	8-CS-123-153	X3		

SURREY POWER STATION, UNIT 2

QA CATEGORY I PIPING
LINE TABLE

<u>System/TM</u>	<u>Line Number</u>	<u>Verification</u> A B C D E	<u>Notes</u>	<u>Rev.</u>
	1/2-CS-124-N1	X		7.17
	1/2-CS-125-N1	X		7.18
	6-CS-128-153	X 6	From MOV-CS-202A to 6-CS-129-153	7.19
	6-CS-129-153	X 6	From MOV-CS-202B to 2-CS-TK-1	7.20
	8-CS-133-153	X 3		7.21
	8-CS-134-153	X 3		7.22
	4-CS-135-153	*G		7.23
	4-CS-136-153	*C		7.24
				7.25
				7.26
Containment Vacuum/ FM-102	3/8-LM-101-N6	X	From 3/8"-LM-112-N7 to TV-LM-200C	7.28
	3/8-LM-102-N6	X	From 3/8"-LM-113-N7 to TV-LM-200B	7.29
	3/8-LM-103-N6	X	From 3/8"-LM-111-N7 to TV-LM-200E	7.30
	1/4-LM-111-N7	X		7.31
	1/4-LM-112-N7	X		7.32
	1/4-LM-113-N7	X		7.33
	3/8-LM-114-N7	X	From sealed pres. sys. to TV-LM-201A	7.34
	3/8-LM-115-N7	X	From sealed pres. sys. to TV-LM-201B	7.35
	1/4-LM-116-N7	X		7.36
	3/8-LM-117-N6	X	From 3/8-LM-116-N7 to TV-LM-200G	7.37
	2-CV-101-154	X	Outside cont. to TV-CV-250B	7.38
	2-CV-102-154	X	Outside cont. to TV-CV-250D	7.39
	8-CV-108-151	X 3	Outside cont. to second VGW-15A	7.40
	4-CV-120-152	X 5		7.41
				7.42
				7.43
				7.44
				7.45
				7.46
				7.47
Reactor Coolant/ FM-103A&B	29-RC-301-2501R	*	*Piping reanalysis completed as part of steam generator replacement project	7.50
	31-RC-302-2501R	*		7.51
	27 1/2-RC-303-2501R	*		7.52
	29-RC-304-2501R	*		7.53
	31-RC-305-2501R	*		7.54

Revision 1
8-10-79
Page 11

SURREY POWER STATION, UNIT 2

QA CATEGORY I PIPING
LINE TABLE

System/PM	Line Number	Verification					Notes	Rev.	
		A	B	C	D	E			
	27 1/2-RC-306-2501R	*						1	7.55
	29-RC-307-2501R	*						1	7.56
	31-RC-308-2501R	*						1	7.57
	27 1/2-RC-308-2501R	*						1	7.58
	12-RC-310-2501R	*						1	8.1
	8-RC-311-2501R	X						1	8.2
	8-RC-312-2501R	X						1	8.3
	8-RC-313-2501R	X						1	8.4
	4-RC-314-1502	X							8.5
	4-RC-315-1502	X							8.6
	6-RC-316-1502	X							8.7
	6-RC-317-1502	X							8.8
	6-RC-318-1502	X							8.9
	6-RC-319-1502	X							8.10
	6-RC-320-602	X							8.11
	6-RC-321-1502	X							8.12
	12-RC-322-1502	X							8.13
	12-RC-323-1502	X							8.14
	12-RC-324-1502	X							8.15
	3/8-RC-322-ICN9				X				8.16
	3/8-RC-333-ICN9				X				8.17
	4-RC-334-1502	X							8.18
	3-RC-335-1502	X							8.19
	12-RC-336-602	X							8.20
	6-RC-337-1502	X							8.21
	6-RC-338-1502	X							8.22
	6-RC-339-1502	X							8.23
	6-RC-340-602	X							8.24
	6-RC-341-602	X							8.25
	6-RC-342-602	X							8.26
	2-RC-344-1502				X				8.27
	2-RC-345-1502				X				8.28
	2-RC-346-1502				X				8.29
	3/4-RC-347-1502								8.30
	3/4-RC-348-1502				X				8.31
	3/4-RC-349-1502				X				8.32
	3/4-RC-350-1502				X				8.33
	3/4-RC-351-1502				X				8.34
	2-RC-353-1502				X				8.35
	2-RC-355-1502				X				8.36

Revision 1
8-10-79
Page 12

SURREY POWER STATION, UNIT 2

QA CATEGORY I PIPING
LINE TABLE

System/FM	Line Number	Verification					Notes	Rev.
		A	B	C	D	E		
	2-RC-356-1502				X			8.37
	2-RC-358-1502				X			8.38
	2-RC-359-1502				X			8.39
	1 1/2-RC-360-1502				X			8.40
	3-RC-361-1502	X						8.41
	6-RC-362-602	X						8.42
	3/4-RC-363-1502				X			8.43
	3/4-RC-364-1502				X			8.44
	3/4-RC-365-1502				X			8.45
	3/4-RC-366-1502				X			8.46
	3/4-RC-367-1502				X			8.47
	3/4-RC-392-1502				X			8.48
	3/4-RC-393-1502				X			8.49
	3/4-RC-394-1502				X			8.50
	3/4-RC-395-1502				X			8.51
	3/4-RC-396-1502				X			8.52
	3/4-RC-397-1502				X			8.53
	3/4-RC-398-1502				X			8.54
	3/4-RC-399-1502				X			8.55
	3/4-RC-400-1502				X			8.56
	3/4-RC-401-1502				X			8.57
	3/4-RC-402-1502				X			8.58
	3/4-RC-403-1502				X			9.1
	1 1/2-RC-404-1502				X			9.2
	1 1/2-RC-405-1502				X			9.3
	3/4-RC-406-1502				X			9.4
	3/8-RC-407-ICN9				X			9.5
	3/8-RC-408-ICN9				X			9.6
	2-RC-412-1502				X			9.7
	2-RC-413-2501R				X			9.8
	3/5-RC-414-1502				X			9.9
	2-RC-415-1502				X			9.10
	3-RC-416-1502			X				9.11
	2-RC-417-1502				X			9.12
	3/4-RC-418-1502				X			9.13
	2-RC-419-2501R				X			9.14
	3/4-RC-420-1502				X			9.15
	2-RC-421-1502				X			9.16
	1-RC-422-1502				X			9.17
	1-RC-423-1502				X			9.18

Revision 1
8-10-79
Page 13

SURREY POWER STATION, UNIT 2

QA CATEGORY I PIPING
LINE TABLE

<u>System/FM</u>	<u>Line Number</u>	<u>Verification</u>					<u>Notes</u>	<u>Rev.</u>
		A	B	C	D	E		
	1-RC-424-1502					X		9.19
	1 1/2-RC-425-1502					X		9.20
	2-RC-426-1502					X		9.21
	3/4-RC-427-1502					X		9.22
	2-RC-428-2501R					X		9.23
	2-RC-429-1502					X		9.24
	3/4-RC-430-1502					X		9.25
	3-RC-431-1502		X					9.26
	2-RC-432-1502					X		9.27
	2-RC-433-2501R					X		9.28
	3/4-RC-434-1502					X		9.29
	3/4-RC-435-1502					X		9.30
	1-RC-436-1502					X		9.31
	1-RC-437-1502					X		9.32
	1-RC-438-1502					X		9.33
	2-RC-439-1502					X		9.34
	3/4-RC-440-1502					X		9.35
	1 1/2-RC-441-1502					X		9.36
	2-RC-442-1502					X		9.37
	3/4-RC-443-1502					X		9.38
	2-RC-444-2501R					X		9.39
	3/4-RC-445-1502					X		9.40
	2-RC-446-1502					X		9.41
	3-RC-447-1502		X					9.42
	2-RC-448-1502					X		9.43
	3/4-RC-449-1502					X		9.44
	2-RC-451-1502					X		9.45
	3/4-RC-452-1502					X		9.46
	2-RC-453-1502					X		9.47
	1-RC-454-1502					X		9.48
	1-RC-445-1502					X		9.49
	1-RC-456-1502					X		9.50
	2-RC-459-152					X		9.51
	3/4-RC-461-1502					X		9.52
	3/4-RC-462-1502					X		9.53
	3/4-RC-463-1502					X		9.54
	3/4-RC-465-1502					X		9.55
	3/4-RC-466-1502					X		9.56
	3/4-RC-467-152					X		9.57
	3/4-RC-468-602					X		9.58

Revision 1
8-10-79
Page 14

SURREY POWER STATION, UNIT 2

QA CATEGORY I PIPING
LINE TABLE

<u>System/FM</u>	<u>Line Number</u>	<u>Verification</u>	<u>Notes</u>	<u>Rev.</u>
		A B C D E		
	3/4-RC-469-152	X		10.1
	3/4-RC-470-152	X		10.2
	3/4-RC-471-152	X		10.3
	3/4-RC-472-1502	X		10.4
	3/4-RC-473-1502	X		10.5
	3/4-RC-474-1502	X		10.6
	6-RC-488-152	X		10.7
	6-RC-489-152	X		10.8
	6-RC-490-152	X		10.9
	1-RC-492-1502	X		10.10
	4-RC-497-153	X		10.11
	2-RC-498-1502	X		10.12
	2-RC-499-1502	X		10.13
	2-RC-500-1502	X		10.14
	3/4-RC-501-151	X		10.15
	3/4-RC-525-1502	X		10.16
	3/4-RC-526-1502	X		10.17
	3/4-RC-527-1502	X		10.18
	3/4-RC-528-1502	X		10.19
	3/4-RC-529-1502	X		10.20
	3/4-RC-530-1502	X		10.21
Residual Heat Removal/ FM-104A	14-RH-101-1502	X1		10.23
	14-RH-102-602	X3		10.24
	2-RH-103-602		X	10.25
	10-RH-104-602	X3		10.26
	10-KH-105-602	X3		10.27
	12-KH-106-602	X3		10.28
	10-RH-107-602	X3		10.29
	10-KH-108-602	X3		10.30
	10-RH-109-602	X3		10.31
	10-RH-110-602	X3		10.32
	1-RH-111-602		X	10.33
	12-RH-112-602	X3		10.34
	3-RH-113-602	X3		10.35
	6-RH-114-602	X3		10.36
	4-RH-115-152	X5		10.37
	10-RH-116-1502	X1		10.38
	10-RH-117-1502	X1		10.39

SURREY POWER STATION, UNIT 2

QA CATEGORY I PIPING
LINE TABLE

System/FM	Line Number	Verification					Notes	Rev.
		A	B	C	D	E		
	14-RH-118-602	X3						10.40
	12-RH-119-602	X3						10.41
	6-RH-120-152	X5						10.42
	3/4-RH-121-602				X			10.43
	3/4-RH-122-602				X		From 12"-RH-119-602 to 3/4"-T58	10.44
	10-RH-123-602	X3						10.45
	3/4-RH-124-602				X			10.46
	3/4-RH-125-602				X			10.47
	3/8-RH-150-602				X			10.48
	3/8-RH-151-602				X			10.49
Chemical & Volume Control/ FM-105A	3-CH-325-152	X4						10.52
	2-CH-326-152				X			10.53
	2-CH-327-152				X			10.55
	2-CH-327-152				X			10.56
	2-CH-329-152				X			10.57
	3-CH-330-152	X4						10.58
	2-CH-331-152				X			11.1
	2-CH-332-152				X			11.2
	2-CH-333-152				X			11.3
	3-CH-347-152	X4						11.4
	3-CH-348-152	X4						11.5
	3-CH-349-152	X4						11.6
	3-CH-350-152	X4						11.7
	3-CH-351-152	X4						11.8
	3-CH-363-152	X4						11.9
	3-CH-387-152							11.10
	2-CH-388-152				X			11.11
	2-CH-426-152				X			11.12
	2-CH-427-152				X			11.13
	2-CH-428-152				X			11.14
	3-CH-429-152	X4						11.15
	2-CH-430-152				X			11.16
	3-CH-431-152	X4						11.17
	2-CH-432-152				X			11.18
	3-CH-433-152	X4						11.19
	2-CH-434-152				X			11.20
	2-CH-435-152	X4						11.21
	3-CH-436-152	X4						11.22

SURREY POWER STATION, UNIT 2

QA CATEGORY I PIPING
LINE TABLE

System/FM	Line Number	Verification					Notes	Rev.
		A	B	C	D	E		
	2-CH-437-152				X			11.23
	2-CH-438-152				X			11.24
	2-CH-468-152				X			11.25
	2-CH-469-152				X			11.26
	2-CH-470-152				X			11.27
	2-CH-471-152				X			11.28
	3/4-CH-472-152				X			11.29
	2-CH-473-152				X			11.30
	3/4-CH-474-152				X			11.31
	2-CH-475-152				X			11.32
	3/4-CH-476-152				X			11.33
	2-CH-477-152				X		QA1 from 2CH-467 to & inc 2-X42D	11.34
	3/4-CH-482-152				X			11.35
	3/4-CH-483-152				X			11.36
	3/4-CH-484-152				X			11.37
	3/4-CH-485-152				X			11.38
	3/4-CH-486-152				X			11.39
	2-CH-513-152				X			11.40
	3-CH-551-152		X4					11.41
	3-CH-552-152		X4					11.42
	3-CH-302-1503			X4				11.44
Chemical & Volume Control/ FM-IC5B	2-CH-307-602				X			11.47
	2-CH-308-1503				X			11.48
3-CH-303-1503	3-CH-311-1503		X4					11.49
	2-CH-312-1503				X			11.50
	2-CH-313-1503				X			11.51
	8-CH-317-152		X4					11.52
	6-CH-318-152		X4					11.53
	6-CH-319-152		X4					11.54
	3/4-CH-320-1503				X			11.55
	2-CH-321-1503				X			11.56
	2-CH-322-1503				X			11.57
	3-CH-323-152		X4					11.58
	3-CH-324-152		X4					12.1
	3-CH-325-152		X4					12.2
	1-CH-356-152				X			12.3
	1-CH-357-152				X			12.4
	2-CH-358-152				X			12.5
	2-CH-359-152				X			12.6

SURREY POWER STATION, UNIT 2

QA CATEGORY I PIPING
LINE TABLESystem/FM

<u>Line Number</u>	<u>Verification</u>					<u>Notes</u>	<u>Rev.</u>
	A	B	C	D	E		
1-CH-360-152				X		QA1 from 8"CH 317 to Valve 1X42D	12.7
3/4-CH-367-152				X			12.8
3-CH-369-1503		X4					12.9
3-CH-370-1503			X4				12.10
3-CH-371-1503			X4				12.11
6-CH-372-152	X4						12.12
3-CH-373-152		X4					12.13
2-CH-374-1503				X			12.14
2-CH-375-1503				X			12.15
2-CH-376-1503				X			12.16
2-CH-377-1503				X			12.17
2-CH-378-152				X			12.18
3-CH-379-1503		X4					12.19
4-CH-380-1503		X4					12.20
3-CH-381-1503		X4					12.21
3-CH-387-152		X4					12.22
4-CH-389-1503		X4					12.23
2-CH-390-1503				X			12.24
2-CH-391-1503				X			12.25
3-CH-399-152		X4					12.26
3-CH-400-152		X4					12.27
4-CH-412-152		X4					12.28
3-CH-413-1503		X4					12.29
2-CH-414-1503				X			12.30
3/4-CH-415-1503				X			12.31
3/4-CH-416-1503				X			12.32
2-CH-417-152				X			12.33
3-CH-418-152		X4					12.34
3-CH-419-152		X4					12.35
2-CH-420-152				X			12.36
3-CH-421-152		X4					12.37
2-CH-425-602				X			12.38
3/4-CH-487-152				X			12.39
3/4-CH-488-1503				X			12.40
3/4-CH-489-1503				X			12.41
3/4-CH-490-152				X			12.42
3-CH-491-152		X4					12.43
3-CH-492-152		X4					12.44
3-CH-493-152		X4					12.45
4-CH-494-152		X4					12.46

SURREY POWER STATION, UNIT 2

QA CATEGORY I PIPING
LINE TABLE

<u>System/FM</u>	<u>Line Number</u>	<u>Verification</u>					<u>Notes</u>	<u>Rev.</u>
		A	B	C	D	E		
	2-CH-495-152				X		QA1 from 2-CH-BL-1 to inc 2nd 2-X42D	12.47
	2-CH-496-152				X			12.48
	3/4-CH-497-152				X		QA1 from 2-CH-496 to inc 2nd 3/4X42D	12.49
	2-CH-499-152				X			12.50
	3-CH-500-152		X4					12.51
	6-CH-501-152	X4						12.52
	6-CH-502-152	X4						12.53
	6-CH-503-152	X4						12.54
	8-CH-504-152	X4						12.55
	8-CH-505-152	X4						12.56
	8-CH-506-152	X4						12.57
	3/4-CH-507-1503				X			12.58
	3/4-CH-508-1503				X			13.1
	3/4-CH-509-1503				X			13.2
	2-CH-511-152				X			13.3
	2-CH-512-152				X			13.4
	1-CH-520-152				X			13.5
	3/4-CH-524-1503				X			13.6
	3/4-CH-525-1503				X			13.7
	3/4-CH-526-1503				X			13.8
	2-CH-531-1503				X			13.9
	3/4-CH-534-152				X			13.10
	1/2-CH-536-152				X			13.11
	1-CH-537-152				X		Q1 from 2-CH-TK-2 to & inc 1-X42D	13.12
	3-CH-538-152		X4					13.13
	1/2-CH-539-152				X			13.14
	1-CH-463-152				X			13.15
	3/4-CH-464-152				X			13.16
	1-CH-465-152				X			13.17
	3/4-CH-466-1503				X			13.18
	3/4-CH-467-1503				X			13.19
Chemical & Volume Control/ FM-105C	3-CH-301-1502		X3					13.22
	2-CH-305-1502				X			13.23
	2-CH-306-602				X			13.25
	2-CH-309-1503				X			13.26
	2-CH-310-1503				X			13.27
	2-CH-314-1502				X			13.28
	2-CH-315-1503				X			13.29

Revision 1
8-10-79
Page 19

SURREY POWER STATION, UNIT 2

QA CATEGORY I PIPING
LINE TABLE

<u>System/FM</u>	<u>Line Number</u>	<u>Verification</u>					<u>Notes</u>	<u>Rev.</u>
		A	B	C	D	E		
	2CH-316-1502				X			13.30
	3-CH-365-152			X3				13.31
	3-CH-366-152							13.32
	2-CH-368-1502				X			13.33
	3-CH-379-1503			X3				13.34
	2-CH-382-1502				X			13.35
	2-CH-383-1502				X			13.36
	2-CH-384-1502				X			13.37
	2-CH-385-602				X			13.38
	2-CH-392-1503				X			13.39
	2-CH-393-1503				X			13.40
	2-CH-394-1503				X			13.41
	2-CH-395-1502				X			13.42
	2-CH-396-1503				X			13.43
	2-CH-397-1502				X			13.44
	3/4-CH-398-1502				X			13.45
	3-CH-399-152			X3				13.46
	3/4-CH-401-1502				X			13.47
	3/4-CH-402-1502				X			13.48
	3/4-CH-403-1502				X			13.49
	3/4-CH-405-1502				X			13.50
	3/4-CH-406-1502				X			13.51
	3/4-CH-408-1502				X			13.52
	3/4-CH-409-1502				X			13.53
	3/4-CH-411-1502				X			13.54
	2-CH-422-152				X			13.55
	3/4-CH-423-1502				X			13.56
	3/4-CH-424-152				X			13.57
	2-CH-514-152				X			13.58
	2-CH-515-152				X			14.1
	2-CH-516-152				X			14.2
	3/4-CH-517-152				X			14.3
	3/4-CH-518-152				X			14.4
	3/4-CH-519-152				X			14.5
	3/4-CH-523-1502				X			14.6
	2-CH-532-602				X			14.7
	2-CH-533-602				X			14.8
	3/4-CH-540-1502				X			14.9
	3/4-CH-560-1502				X			14.10
	3/4-CH-561-1502				X			14.11

SURREY POWER STATION, UNIT 2

QA CATEGORY I PIPING
LINE TABLE

System/FM	Line Number	Verification					Notes	Rev.
		A	B	C	D	E		
	1-CH-562-1502				X			14.12
	1-CH-563-1502				X			14.13
	1-CH-564-1502				X			14.14
	1-CH-565-1502				X			14.15
	1-CH-566-1502				X			14.16
	1-CH-567-1502				X			14.17
Safety Injection/ FM 106 A & B	12-S1-201-153	*4			*		*See MKS - 127A&B	14.20
	12-S1-202-153	*4			*			14.21
	12-S1-203-153				*			14.23
	12/16-S1-205-153	*6						14.24
	10-S1-206-153	X6						14.25
	8-S1-207-152	X6						14.26
	1 1/2-S1-208-152				X			14.27
	1-S1-209-1503				X			14.28
	1-S1-211-602				X			14.29
	1-S1-212-602				X			14.30
	10-S1-213-153	X4						14.31
	8-S1-214-153	X4						14.32
	10-S1-216-153	X4						14.33
	8-S1-217-152	X4						14.34
	6-S1-218-152	X4						14.35
	6-S1-219-152	X4						14.36
	1-S1-220-1503				X			14.37
	2-S1-225-152				X			14.38
	3/4-S1-227-602				X			14.39
	3/4-S1-228-602				X			14.40
	3/4-S1-229-602				X			14.41
	3/4-S1-230-152				X			14.42
	3/4-S1-233-1502				X			14.43
	3/4-S1-234-1502				X			14.44
	3/4-S1-235-1502				X			14.45
	3/4-S1-236-602				X		From 12"S1-245-1502 to T58 valve	14.46
	3/4-S1-237-602				X		From 12"S1-246-1502 to T58 valve	14.47
	3/4-S1-238-602				X		From 12"S1-247-1502 to T58 valve	14.48
	3/4-S1-239-1502				X			14.49
	3/4-S1-240-1502				X			14.50
	3/4-S1-241-1502				X			14.51
	3/4-S1-242-602				X			14.52

Revision 1
8-10-79
Page 21

SURREY POWER STATION, UNIT 2

QA CATEGORY I PIPING
LINE TABLE

<u>System/TM</u>	<u>Line Number</u>	<u>Verification</u>					<u>Notes</u>	<u>Rev.</u>
		A	B	C	D	E		
	3/4-S1-243-602				X			14.53
	3/4-S1-244-602				X			14.54
	12-S1-245-1502	X						14.55
	12-S1-246-1502	X						14.56
	12-S1-247-1502	X						14.57
	6-S1-248-1502	X						14.58
	6-S1-249-1502	X						15.1
	6-S1-250-1502	X						15.2
	3/4-S1-255-153				X			15.3
	3/4-S1-256-153				X			15.4
	3-S1-257-1503		X4					15.5
	3-S1-258-1503		X4					15.6
	3/4-S1-259-1503				X			15.7
	1-S1-260-1503				X			15.8
	1-S1-261-602				X			15.9
	1-S1-262-152				X			15.10
	2-S1-263-602				X			15.11
	1-S1-264-152				X			15.12
	2-S1-265-602				X			15.13
	1-S1-266-152				X			15.14
	2-S1-267-602				X			15.15
	3/4-S1-268-1503				X			15.16
	3-S1-270-1503			X3				15.17
	2-S1-271-1503				X			15.18
	3-S1-272-1503			X3				15.19
	2-S1-273-1503				X			15.20
	2-S1-274-1502				X			15.21
	2-S1-275-1502				X			15.22
	2-S1-276-1503				X			15.23
	2-S1-277-1503				X			15.24
	6-S1-278-152		X4					15.25
	2-S1-279-1502				X			15.26
	2-S1-280-1502				X			15.27
	2-S1-281-1502				X			15.28
	10-S1-283-152		X4					15.29
	10-S1-284-152		X4					15.30
	2-S1-285-1502				X			15.31
	1-S1-287-1503				X			15.32
	3-S1-290-1503			X4				15.33
	1-S1-295-601				X			15.34

SURRY POWER STATION, UNIT 2

QA CATEGORY 1 PIPING
LINE TABLE

System/TM	Line Number	Verification					Notes	Rev.
		A	B	C	D	E		
	1-S1-296-601				X			15.35
	1-S1-297-602				X			15.36
	1-S1-298-601				X			15.37
	1-S1-299-602				X			15.38
	1-S1-300-602				X			15.39
	1-S1-301-601				X			15.40
	8-S1-302-152	X	G					15.41
	1-S1-303-152				X			15.42
	1-S1-305-601				X			15.43
	2-S1-331-152				X			15.44
	3/4-S1-332-153				X			15.45
	1/2-S1-333-N9				X			15.46
	1/2-S1-334-N9				X			15.47
	1/2-S1-335-N9				X			15.48
	1/2-S1-336-N9				X			15.49
	3/4-S1-337-153				X			15.50
	1/2-S1-338-N9				X			15.51
	1/2-S1-339-N9				X			15.52
	1/2-S1-340-N9				X			15.53
	1/2-S1-341-N9				X			15.54
	6-S1-343-1502	X	1					15.55
	6-S1-344-1502	X	1					15.56
	6-S1-345-1502	X	1					15.57
	3-S1-346-1503			X	3			15.58
	3-S1-347-1503			X	3			16.1
	10-S1-348-153	X	4					16.2
	10-S1-349-153	X	4					16.3
	10-S1-350-153	X	4					16.4
	10-S1-351-153	X	4					16.5
	10-S1-352-1502	X	2					16.6
	6-S1-353-1502	X	1					16.7
	3/4-S1-354-1502				X			16.8
	3/4-S1-355-1502				X			16.9
	3/4-S1-356-1502				X			16.10
	3/4-S1-357-1502				X			16.11
	3/4-S1-358-1502				X			16.12
	3/4-S1-359-1502				-X			16.13
	3/4-S1-360-153				X			16.14
	1-S1-361-1503				X			16.15
	12-S1-362-153				X			16.16

*4

* SEE MKS-127A

SURRY POWER STATION, UNIT 2

QA CATEGORY I PIPING
LINE TABLE

System/FM	Line Number	Verification					Notes	Rev.
		A	B	C	D	E		
	12-S1-363-153	*4						16.17
Gaseous Waste Disposal System/11448 FM 107 A&B	▲ 3-GW-42-154			X				1 16.20
	▲ 3-GW-43-154			X				1 16.21
	▲ 3-GW-44-154			X				16.23
	▲ 3-GW-45-154			X				16.24
	▲ 3-GW-47-153			X				16.26
	▲ 3-GW-48-153			X				16.27
	▲ 3-GW-49-153			X				16.28
Reactor Cavity Purifi- cation/11448-FM-114A	▲ 3-RL-101-152			X			At Cont. Penetration Between Both VDS-15Y	1 16.30
	▲ 3-RL-106-152			X			At Cont. Penetration Between Both VDS-15Y	1 16.31
								1 16.32
								1 16.33
Chemical Feed/FM-121A	3/4-CFPD-101-601			X				1 16.35
	3/4-CFPD-102-601			X				1 16.36
	3/4-CFPD-103-601			X				1 16.37
Steam Generator Blowdown/ 11448-FM-122A	▲ 3-WGCB-101-601			X			To and Including TV-BD-200B	1 16.39
	▲ 3-WGCB-102-601			X			To and Including TV-BD-200D	1 16.40
	▲ 3-WGCB-103-601			X			To and Including TV-BD-200F	1 16.41