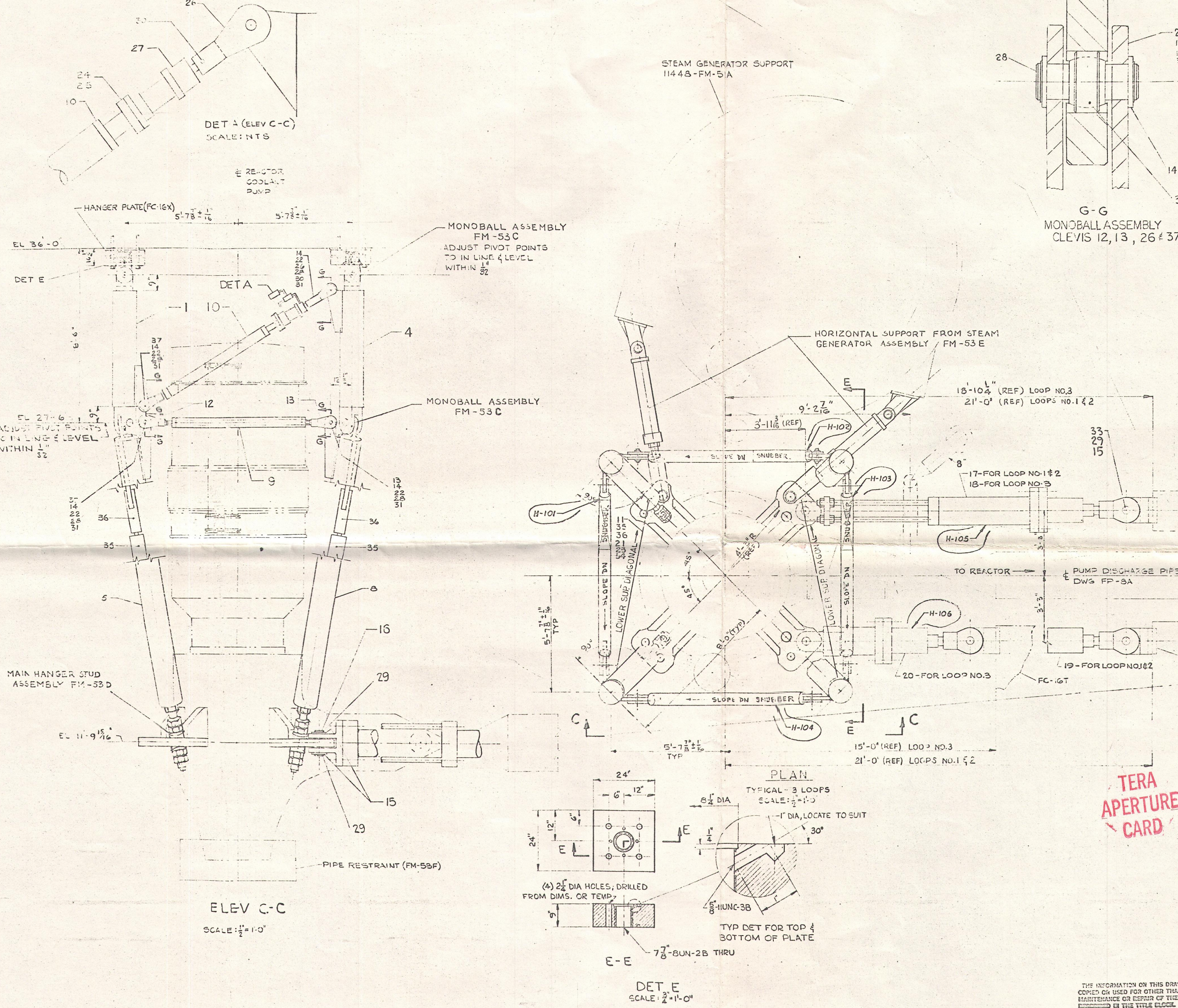


11448-FM-53A



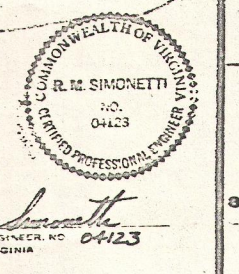
BILL OF MATERIAL (NO REQD PER 3 PUMPS)				
ITEM NO.	QTY	NAME	DIMENSIONS	MATERIAL
1	3	UPPER LEG	14" PIPE	FM-53B
2	3			
3	3			
4	3			
5	3	LOWER LEG		
6	3			
7	3			
8	3			
9	12	HORIZONTAL PIPE BRACE	6" PIPE	FM-53D
10	12	UPPER SUPPORT DIAGONAL	6" PIPE	FM-53D
11	12	PIPE BRACE	3" DIA	ASTM-A320
12	12	ADJUSTABLE CLEVIS	AS DRAWN	FM-53B
13	12	ADJUSTABLE CLEVIS	AS DRAWN	FM-53B
14	96	WASHER	AS DRAWN	ASTM-A320
15	24	WASHER	AS DRAWN	ASTM-A320
16	6	PIN	AS DRAWN	ASTM-A320
17	2	SUP BEAM ASSY WITH RODS	17'-0 1/2"	FM-53H
18	1	SUP BEAM ASSY WITH RODS	14'-11 1/2"	FM-53H
19	2	SUP BEAM ASSY WITHOUT RODS	17'-0 1/2"	ASTM-A320
20	1	SUP BEAM ASSY WITHOUT RODS	11'-0 1/2"	ASTM-A320
21	24	RETAINING RING	NO 5100-300	
22	96	RETAINING RING	NO 5100-100	
23	24	WASHER	AS DRAWN	ASTM-A320
24	48	HEX BOLT & NUT	3/4" UNC X 3 1/2" LG	ASTM-A320
25	48	INTERNAL TOOTH LOCKWASHER	3/4" DIA	COMMERCIAL STEEL
26	12	FORGED STEEL CLEVIS	SEE DWG	ASTM-A320
27	12	HTD SHOCK (SHOCK SUPPRESSOR)	3/4" DIA	ASTM-A320
28	48	PIPE BRACE PIN	2" DIA	ASTM-A320
29	24	RETAINING RING	NO 5100-100	
30	12	HEX SOCKET SET SCREW HALF DOG PT	3/8" DIA X 2 1/2" LG	ASTM-A320
31	48	MONOBALL	2" DIA X 3/4" DIA	ITEMS 12, 13 & 26
32				
33	6	PIN	AS DRAWN	ASTM-A320
34	6	FORGED STEEL CLEVIS	AS DRAWN	ASTM-A320
35	6	FORGED STEEL CLEVIS	AS DRAWN	ASTM-A320
36	6	FORGED STEEL CLEVIS	AS DRAWN	ASTM-A320
37	12	ADJUSTABLE CLEVIS	AS DRAWN	ASTM-A320

TOTAL MATERIAL - J011448 COOLANT PUMP SUPPORTS.

GENERAL NOTES:
SCALE: AS NOTED

REFERENCE DWGS:
REACTOR COOLANT PUMP SUPPORT DET 3A1 FM-53C
SH2 FM-53C
SH3 FM-53D
SH4 FM-53E
SH5 FM-53H
SPEC. REACTOR COOLANT PUMP SUPPORT NUS 94
REACTOR COOLANT PIPE RESTRAINT SH1 FM-53F
SH2 FM-53G
SUPPRESSOR TABULATION FM-53A-1

TERA
APERTURE
CARD



REACTOR COOLANT PUMP SUPPORTS
GEN ARRANGEMENT
SUNNY POWER STATION
VIRGINIA ELECTRIC AND POWER COMPANY
STONK & WILSON ENGINEERING CORPORATION
CONTRACT NO. 11448-FM-53A

ISSUE	DESCRIPTION	CHKD	COOR	DATE	ISSUE	DESCRIPTION	CHKD	COOR	DATE	ISSUE	DESCRIPTION	CHKD	COOR	DATE	ISSUE	DESCRIPTION	CHKD	COOR	DATE
1	ADD SNUBBERS (F-5)			7-20-78	2	REVISED ITEMS 24 & 28 IN BILL OF MATERIAL				3	REVISED DET A & C-C DET E & E-E ADDED				4	REVISED AS PER MFRS DWG			

ARCH	COND	STEEL	MECH	VESEL	BS	ELEC	ARCH	COND	STEEL	MECH	VESEL	BS	ELEC	ARCH	COND	STEEL	MECH	VESEL	BS	ELEC
------	------	-------	------	-------	----	------	------	------	-------	------	-------	----	------	------	------	-------	------	-------	----	------