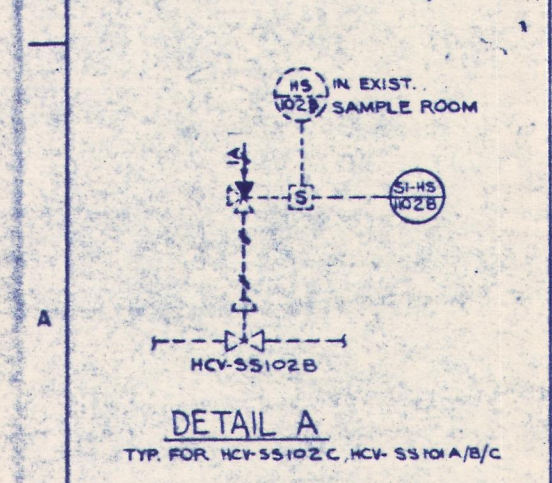
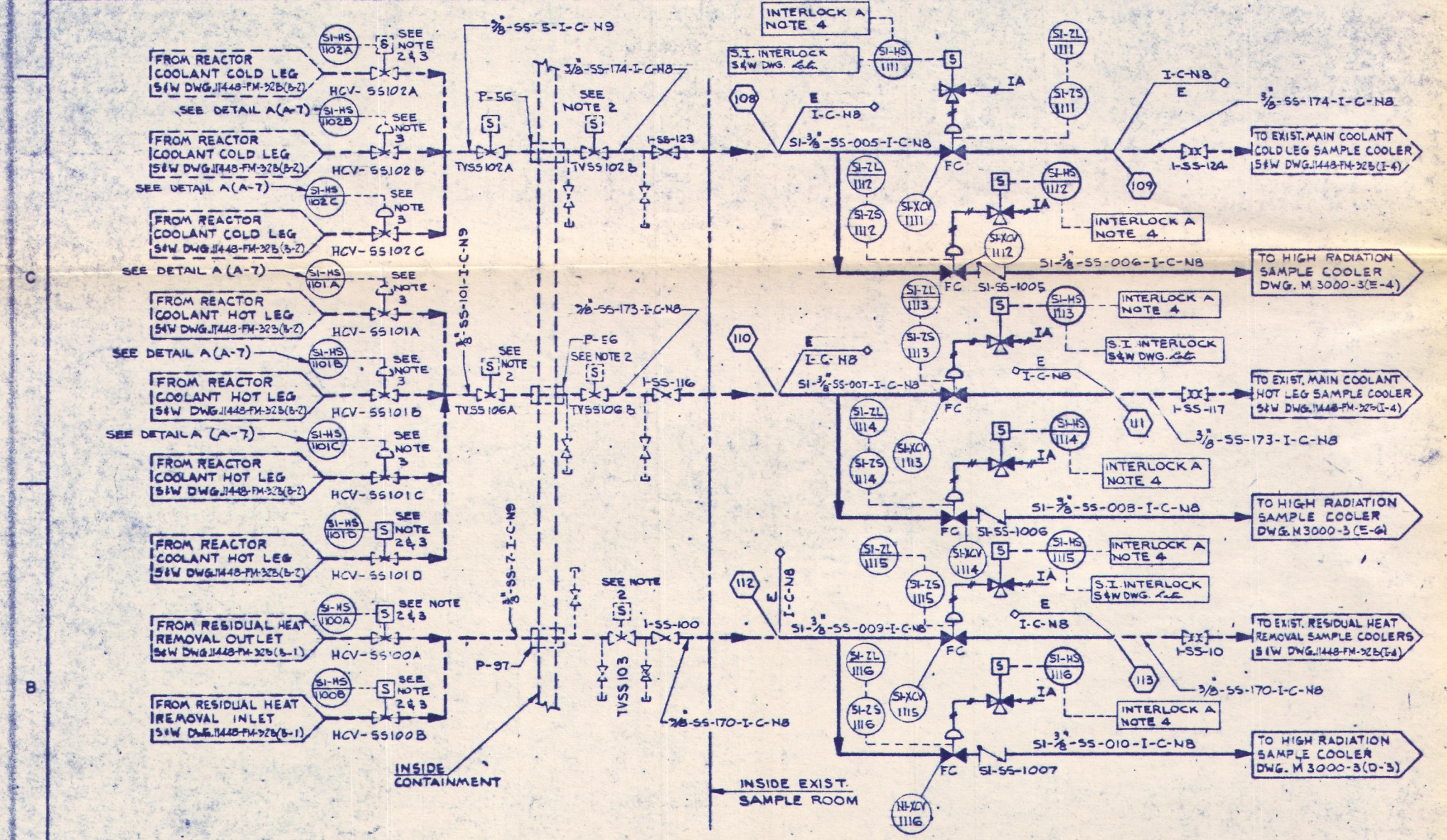


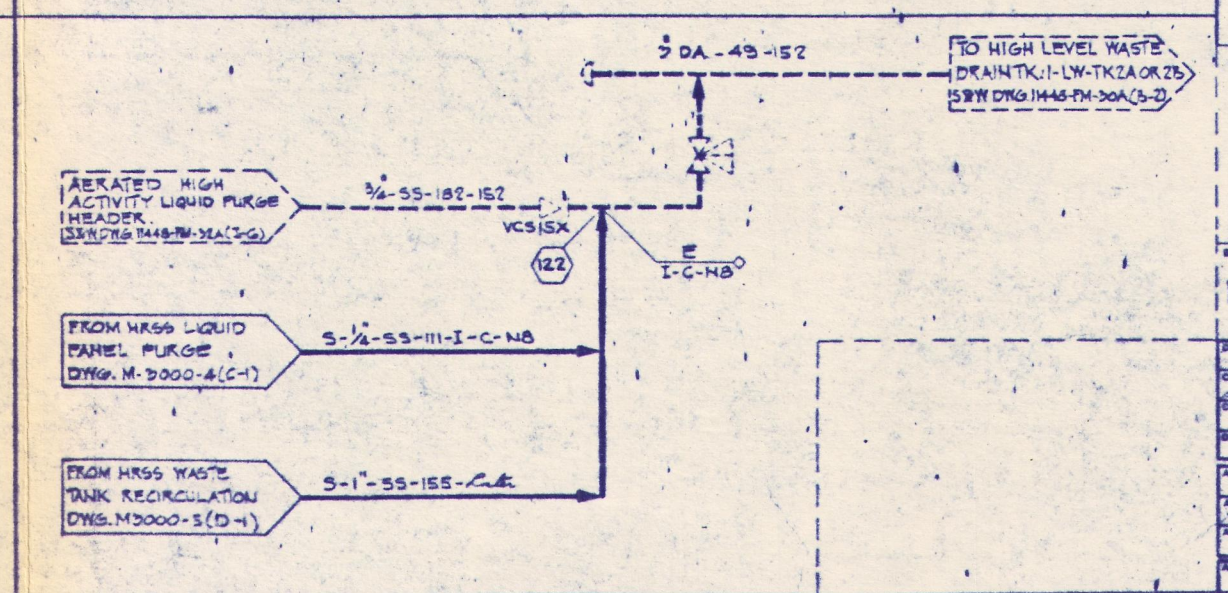
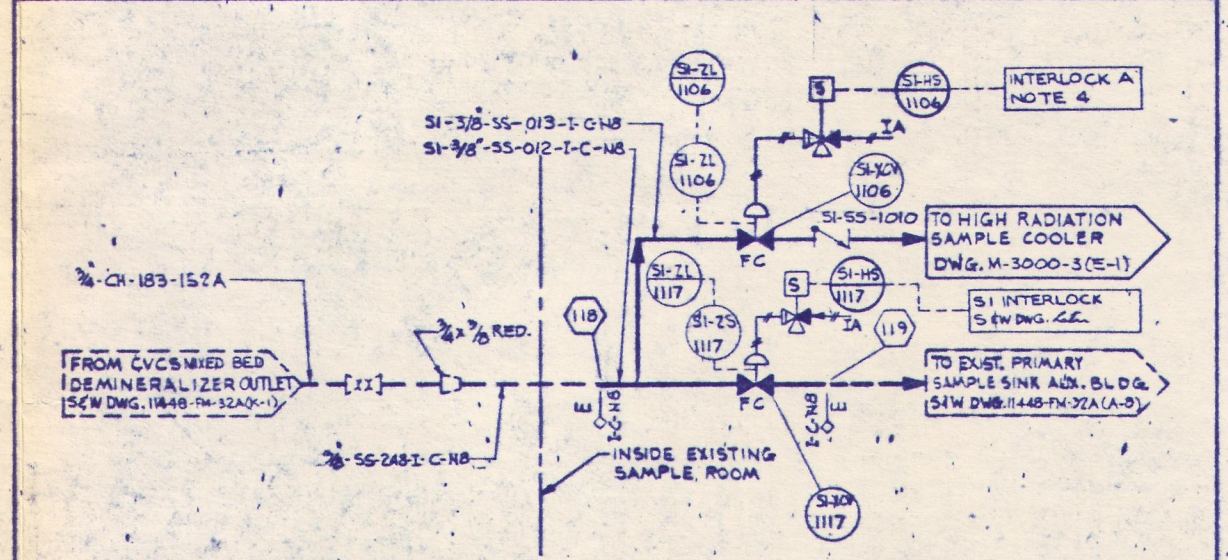
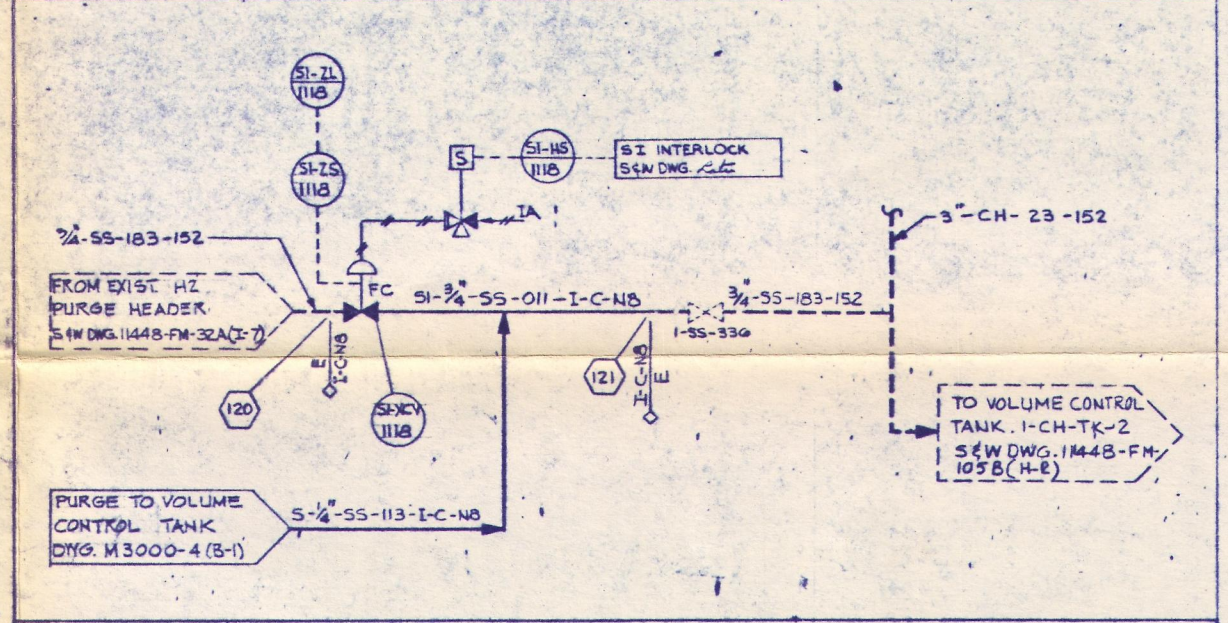
UNIT 1 CONTAINMENT SUMP SAMPLE PUMP
CAP: 20 GPM @ 250 TDH
MOT: 1/2 HP
MOTOR: 1/2 HP



DETAIL A
TYP. FOR HCV-SS1012C, HCV-SS1014B/C

EQUIPMENT LIST		
EQUIP. NO.	DESCRIPTION	SPEC/STD.
S-SS-1001	SAMPLE COOLER	M-201
S-SS-R-100	HRSS-SAMPLE COOLER RACK	M-201
S-SS-R-101	HRSS-LIQUID SAMPLE PANEL	M-201
S-SS-102	QUICK DISCONNECT COUPLING	M-201
S-SS-P-208	GAS STRIPPING EVACUATING COMPRESSOR	P-208
S-SS-103	PRESSURIZED SAMPLE BOMB	M-201
S-SS-104	DEGAS VESSEL	M-201
S-SS-105	DILUTER CONTAINER	M-201
S-SS-106	BOTTLE SAMPLE SHIELD CASK & CART	M-201
S-SS-107	ARGON GAS CYLINDER ASSEMBLY	P-215
S-SS-T-100	HRSS-WASTE TANK	P-207
S-SS-P-206A/B	HRSS-WASTE PUMP	P-206
S-SS-108	EDUCTOR	M-201
S-SS-T-103A/B	NITROGEN CYLINDER ASSEMBLY	P-215
S-SS-T-101	pH BUFFER SOLUTION TANK	P-203
S-SS-T-102	O ₂ SATURATED WATER TANK	P-203
S-SS-P-214	CONTAINMENT SUMP SAMPLING PUMP	P-214
S-SS-R-102	CHEMICAL ANALYSIS PANEL	P-203

GENERAL NOTES:	
1.	EXISTING VALVES ARE AIR OPERATED, AND ARE BEING CHANGED TO MOV'S BY OTHERS.
2.	EXISTING VALVES ARE AIR OPERATED AND ARE BEING CHANGED TO MOV'S BY OTHERS.
3.	3 VALVE HAS EXIST. SWITCH IN CURRENT SAMPLE ROOM.
4.	INTERLOCK 'A' PREVENTS UNIT 1 SAMPLES FROM BEING INADVERTENTLY DIVERTED TO UNIT 2 CONTAINMENT. SEE LOGIC DIAGRAM (SEE).
5.	INTERLOCK 'B' PREVENTS UNIT 2 SAMPLES FROM BEING DIVERTED TO UNIT 1 CONTAINMENT. SEE LOGIC DIAGRAM (SEE).



RELEASED FOR ENGINEERING	
DESIGNED BY	REVIEWED BY
CHECKED BY	APPROVED BY
DATE	DATE
SCALE	SCALE
PROJECT NO.	PROJECT NO.
PROJECT NAME	PROJECT NAME
PROJECT LOCATION	PROJECT LOCATION
PROJECT DESCRIPTION	PROJECT DESCRIPTION
PROJECT STATUS	PROJECT STATUS
PROJECT COST	PROJECT COST
PROJECT RISK	PROJECT RISK
PROJECT IMPACT	PROJECT IMPACT
PROJECT BENEFIT	PROJECT BENEFIT
PROJECT RISK	PROJECT RISK
PROJECT IMPACT	PROJECT IMPACT
PROJECT BENEFIT	PROJECT BENEFIT