

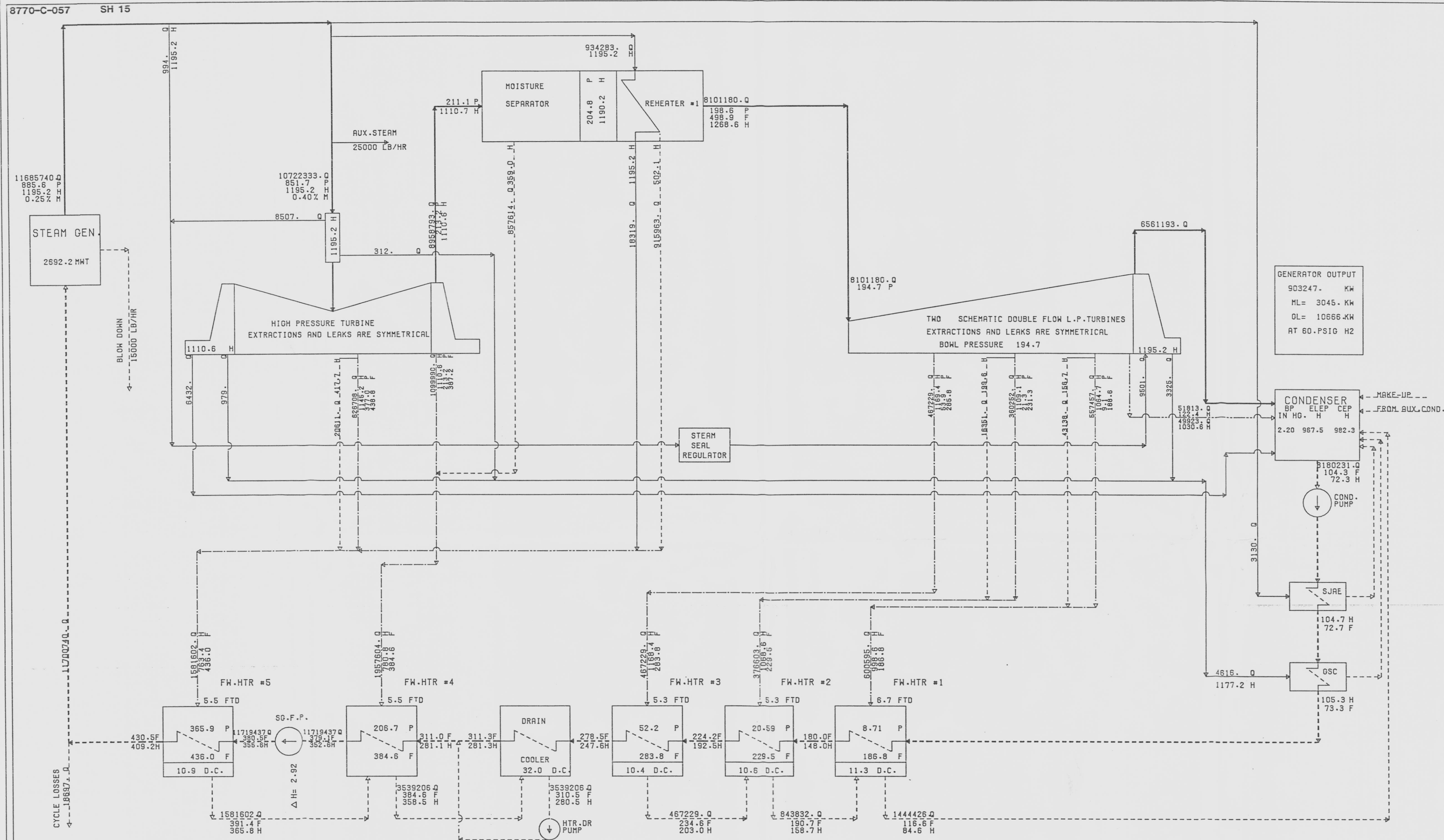
DRAWING NUMBER

PLAN HOLD CORPORATION • BAKKE, CALIFORNIA  
RECEIVED BY NUMBER 0734DRAWING NUMBER  
8770-C-057  
SH 15PLAN HOLD CORPORATION • BAKKE, CALIFORNIA  
RECEIVED BY NUMBER 0734

DRAWING NUMBER

PLAN HOLD CORPORATION • BAKKE, CALIFORNIA  
RECEIVED BY NUMBER 0734

DRAWING NUMBER

CORPORATION • BAKKE, CALIFORNIA  
RECEIVED BY NUMBER 0734

## PERFORMANCE

GROSS GENERATION  
KW.  
903247.TURBINE HEAT-RATE  
BTU/KW-HR  
10168.4

## LEGEND

Q---FLOW-LBS/HR  
F---TEMPERATURE- F  
P---PRESSURE-LBS/SQ. IN ABS.  
H---ENTHALPY OF STEAM-BTU/LB  
FTD---TERMINAL DIFFERENCE (F)  
ELEV---EXPANSION LINE END POINT  
UEEP---USED ENERGY END POINT  
D.C.--DRAIN COOLER APPROACH (F)  
S.C.--SUBCOOLING (F)

STEAM  
WATER  
EXTRACTION STEAM  
TWO PHASE FLOW  
MAIN PATH

SHEET NO	THROTTLE FLOW LBS/HR	THROTTLE PRESSURE PSIA	BACK PRESSURE IN. HG ABS	CYCLE LOSSES LBS/HR	BLOW DOWN LBS/HR
14.	10722336.	852	2.00	18697.	15000.
15.	10722333.	852	2.20	18697.	15000.
16.	10722331.	852	2.40	18697.	15000.
17.	10722328.	852	2.60	18697.	15000.
18.	10722326.	852	2.80	18697.	15000.
19.	10722323.	852	3.00	18697.	15000.
20.	10722321.	852	3.20	18697.	15000.
21.	10722319.	852	3.40	18697.	15000.

THIS DOCUMENT IS THE PROPERTY OF EBASCO SERVICES  
INCORPORATED. ITS USE IS EXPRESSLY RESTRICTED BY THE  
TERMS OF THE CONTRACT, DATED AS OF AUGUST 10, 1968  
BETWEEN EBASCO SERVICES INCORPORATED AND FLORIDA  
POWER & LIGHT COMPANY.

FLORIDA POWER & LIGHT COMPANY  
ST. LUCIE PLANT  
1976 - 890,000 KW INSTALLATION UNIT NO.1  
HEAT BALANCE  
2690 MWT VARIABLE BACK PRESSURE  
2.20 INCHES HG ABSOLUTE

EBASCO SERVICES INCORPORATED NEW YORK

SCALE-NONE APPROVED DATE 9-8-82

DIV. *W. R. Santoro*  
DR. *W. R. Santoro*  
CH. *W. R. Santoro*

8770-C-057  
SH 15

NO.	DATE	REVISION	BY	CH.	APPROVED
1					

E