

DRAWING NUMBER

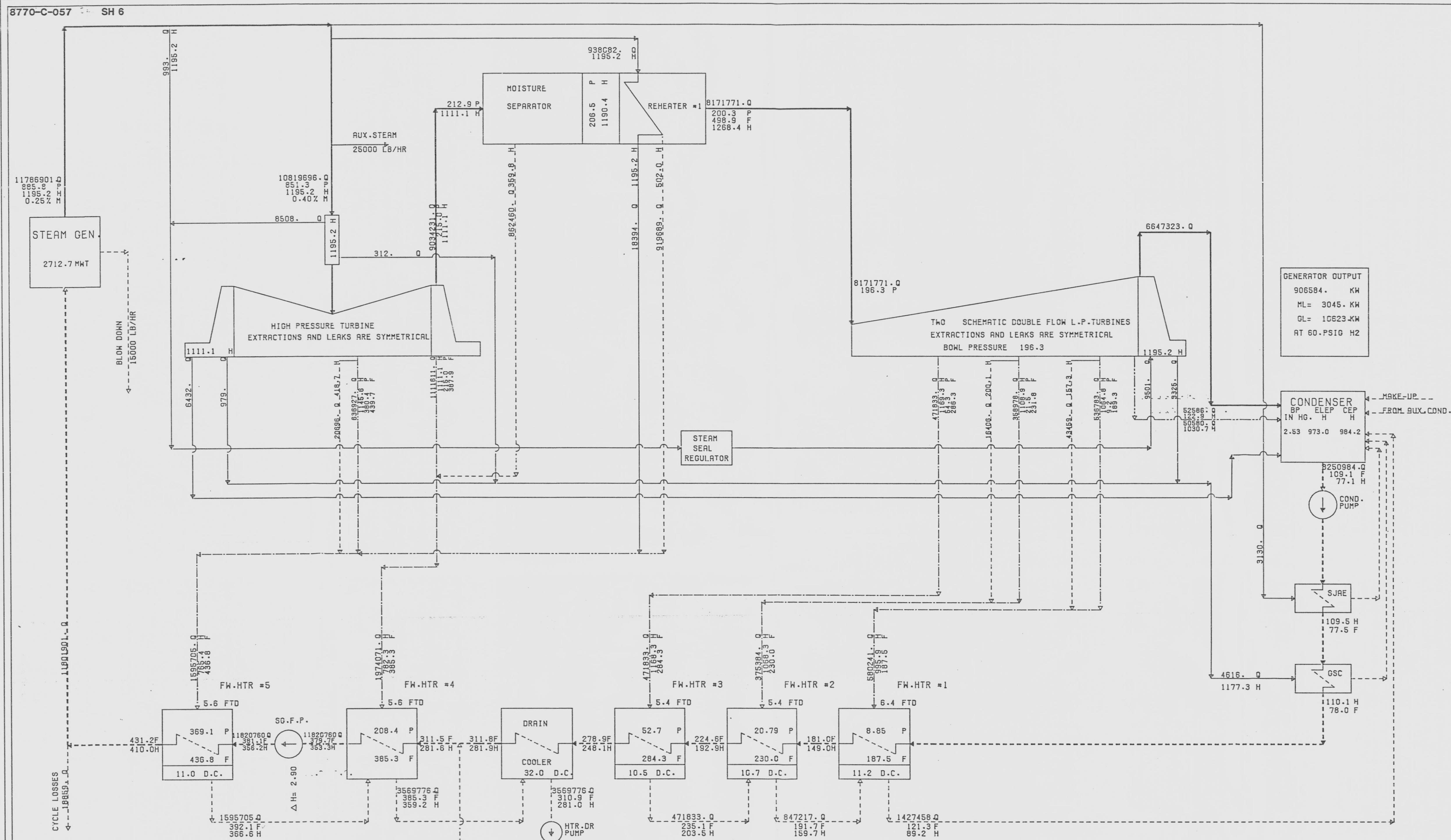
DRAWING NUMBER
8770-C-057
SH 6

DRAWING NUMBER

PLAN HOLD CORPORATION • IRVINE, CALIFORNIA
REPORT BY NUMBER 0254
PRINTED DATE 8/10/82

PLAN HOLD CORPORATION • IRVINE, CALIFORNIA
REPORT BY NUMBER 0254
PRINTED DATE 8/10/82

PLAN HOLD CORPORATION • IRVINE, CALIFORNIA
REPORT BY NUMBER 0254
PRINTED DATE 8/10/82



PERFORMANCE

GROSS GENERATION
KW.
906584.

TURBINE HEAT-RATE
BTU/KW-HR
10208.2

LEGEND

Q---FLOW-LBS/HR
F---TEMPERATURE- F
P---PRESSURE-LBS/SG-IN ABS.
H---ENTHALPY OF STEAM-BTU/LB
FTD---TERMINAL DIFFERENCE (F)
ELEP-EXPANSION LINE END POINT
UEEP-USED ENERGY END POINT
D.C.-DRAIN COOLER APPROACH (F)
S.C.-SUBCOOLING (F)
---STEAM
---WATER
---EXTRACTION STEAM
---TWO PHASE FLOW
---MAIN PATH

SHEET NO	THROTTLE FLOW LBS/HR	THROTTLE PRESSURE PSIA	BACK PRESSURE IN. HG ABS	CYCLE LOSSES LBS/HR	BLOW DOWN LBS/HR	NOTES
6.	10819696.	851	2.53	18859.	15000.	STRETCH POWER
7.	10146370.	853	2.53	17738.	15000.	2570 MWT

THIS DOCUMENT IS THE PROPERTY OF EBASCO SERVICES INCORPORATED. ITS USE IS EXPRESSLY RESTRICTED BY THE TERMS OF THE CONTRACT, DATED AS OF AUGUST 10, 1982 BETWEEN EBASCO SERVICES INCORPORATED AND FLORIDA POWER & LIGHT COMPANY.

FLORIDA POWER & LIGHT COMPANY
ST. LUCIE PLANT
1976 - 890,000 KW INSTALLATION UNIT NO.1
HEAT BALANCE
2710 MWT CONSTANT BACK PRESSURE
AT 2710 MWT LOAD POINT

EBASCO SERVICES INCORPORATED NEW YORK

SCALE-NONE	APPROVED	DATE 9-8-82
DIV. <i>AS</i>	<i>AS</i>	
DR. <i>AS</i>	<i>AS</i>	
CH. <i>AS</i>	<i>AS</i>	

8770-C-057
SH 6



E