

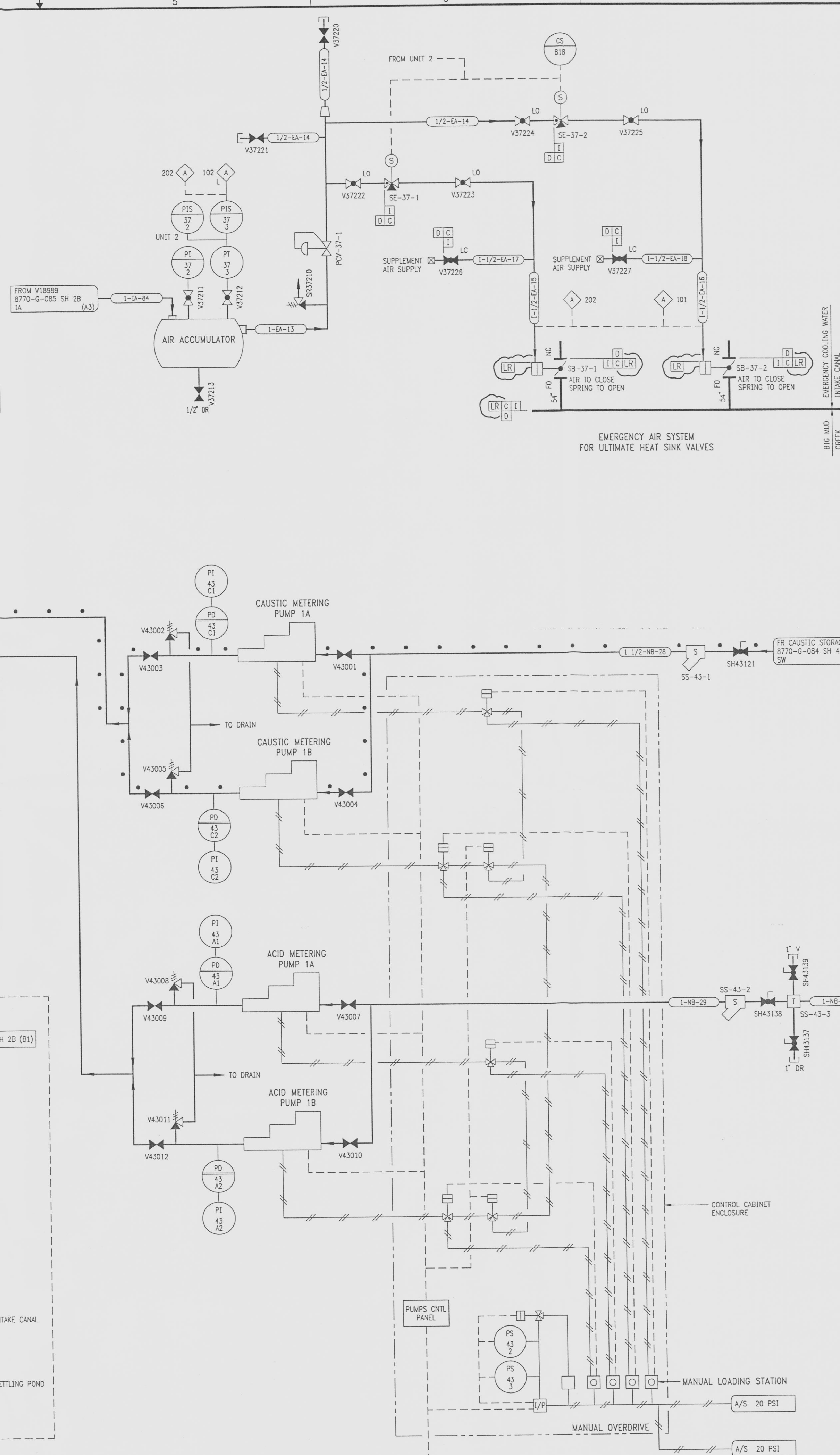
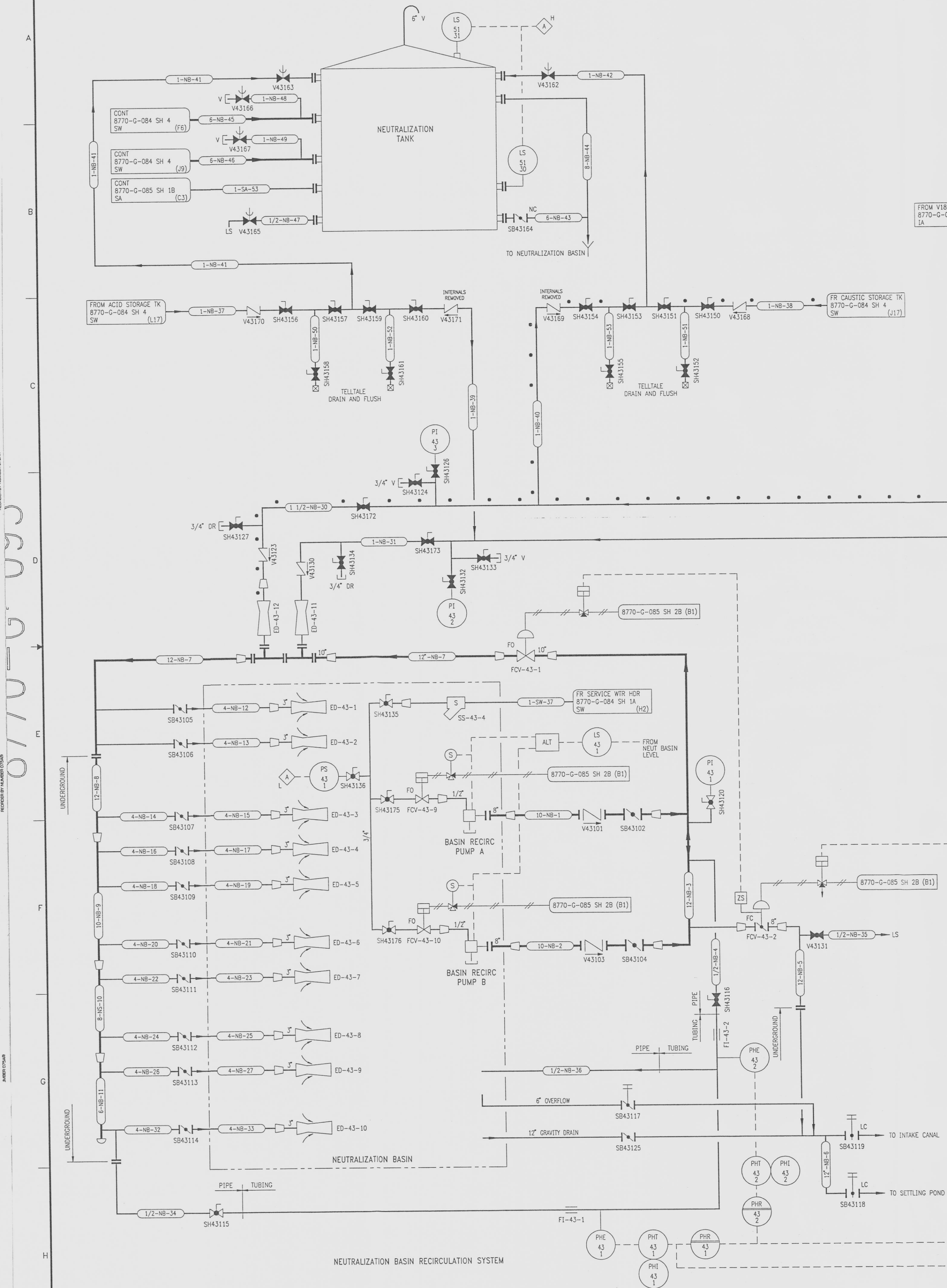
8770-G-093

DRAWING

DRAWING NUMBER
8770-G-093
A/39

DRAWING NUMBER

NUMBER

PAIN HELD CORPORATION • IRVINE, CALIFORNIA
PAIN HELD CORPORATION • IRVINE, CALIFORNIA
PAIN HELD CORPORATION • IRVINE, CALIFORNIA

REVISIONS

NO	DATE	DESCRIPTION	BY	CH	APPROVED
36	8/25/97	DCR 960028; REDRAWN	CJC	GM	VFR
37	6/9/99	DCR 990027 REV(A2,A3,D3,D4,D5,D6,E5,E6,D7,F5,F6 & F7) VALVE POSITION. ADD:(C3) INTERNALS REMOVED.	GM	HS	SHM
38	3/23/2000	98012-B758 REV(E2,E3,F2,G4,H3 & H4) PIPING. ADD: (H3,F2 & E2) FI & VALVES.	GM	HS	SHM
39	7/1/01	DCR 000096 ADD:(G6 & C7) LICENSE RENEWAL FLAGS.	GM	H4	SHC

REFERENCE DRAWINGS

PIPE, VALVES & INSTRUMENT SYMBOLS	8770-G-078 SH 100
VALVE LIST	8770-A-051
LINE LIST	8770-B-052
VALVE OPERATIONAL NUMBER INDEX	8770-B-053
INSTRUMENT INSTALLATION DETAILS	8770-B-231
INSTRUMENT LIST	8770-B-270C
F D WATER TREATMENT SYSTEM	8770-B-084 SH 4

NOTE

PLANT MODIFICATION TO THE WATER TREATMENT SYSTEM ARE TO BE WITHIN SAFETY EVALUATION JPN-PSL-SDNP-93-046 PARAMETERS AND GUIDELINES

NOTE

THIS DRAWING IS MADE FROM REV. 35 OF DRAWING 8770-G-093

REVISION OF THIS DRAWING MAY REQUIRE UPDATE OF THE FOLLOWING DOCUMENTS:
1. FSAR FIGURE 9.2-5f
2. FSAR FIGURE 9.2-7g

FLORIDA POWER & LIGHT COMPANY
ST. LUCIE PLANT
1975 - 890 MWe INSTALLATION - UNIT 1
FLOW DIAGRAM
MISCELLANEOUS
SYSTEMS

FLORIDA POWER & LIGHT

SCALE: NONE	APPROVAL	DATE:
DN: MECH		8770-G-093
DR: G. GLATT		
CR: G. MOSES		

USW00270.DWG