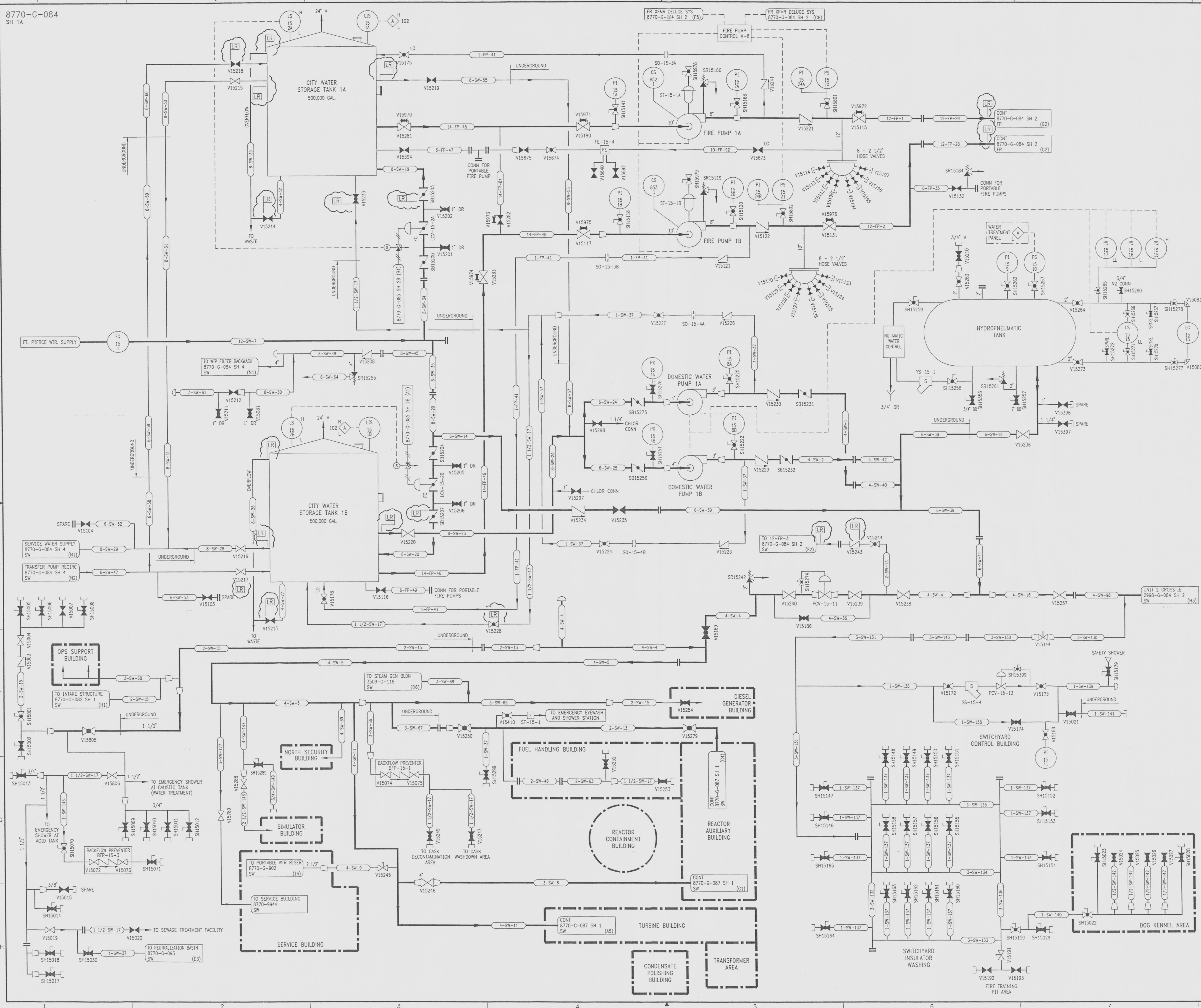


DRAWING N
DRAWING NUMBER
DRAWING NUMBER
G NUMBER



REVISIONS				
NO	DATE	DESCRIPTION	BY	CH
37	8/25/97	DCR 960029: REDRAWN	CJG	VFR
38	11/3/97	DCR 970168: ADD: (A6,B3,B4,B5 & C4) EQUALIZING VALVES	GM	SHM
39	7/16/98	DCR 980118: REV: (D4 & E4) VALVE POSITION.	GM	SHM
40	7/30/98	DCR 980079: ADD: (A5,B5) VALVES. REV: (E6) VALVE LOC., REV: (A5,B5) TAG NUMBERS. DEL: (A5,B5) DRAINS.	GM	SHM
41	12/3/99	PCM 95001 ADD: (F4) PIPING AND VALVE.	GM	MAM
42	8/22/00	DCR 980151 DEL: (E4, E5) PIPING AND VALVES.	GM	MAM
43	8/1/01	DCR 010042 ADD: (B6,B2,B3,A2,A3,D2,E2,F2,F4,E3,E5 & E6) LICENSE RENEWAL FLAGS.	GM	SHM

REFERENCE DRAWINGS
PIPE VALVES & INSTRUMENT SYMBOLS 8770-G-078 SH 100
VALVE LIST 8770-A-051
LINE LIST 8770-B-052
VALVE OPERATIONAL NUMBER INDEX 8770-B-053
INSTRUMENT INSTALLATION DETAILS 8770-B-231
INSTRUMENT LIST 8770-B-270C

NOTE: THIS DRAWING IS MADE FROM REV. 36 OF DRAWING 8770-G-084 SH 1

REVISION OF THIS DRAWING MAY REQUIRE UPDATE OF THE FOLLOWING DOCUMENTS: FSAR FIGURE 9.2-5

FLORIDA POWER & LIGHT COMPANY
ST. LUCIE PLANT
1976 - 890 MWe INSTALLATION - UNIT 1
FLOW DIAGRAM
FIRE WATER, DOMESTIC, AND
MAKE-UP SYSTEMS

FLORIDA POWER & LIGHT COMPANY

SCALE: NONE	APPROVAL	DATE:
DW: MECH.		8770-G-084
DR: C. GLATT		SHEET
CHK: P. BERGERSON		1A

USM00289.DWG