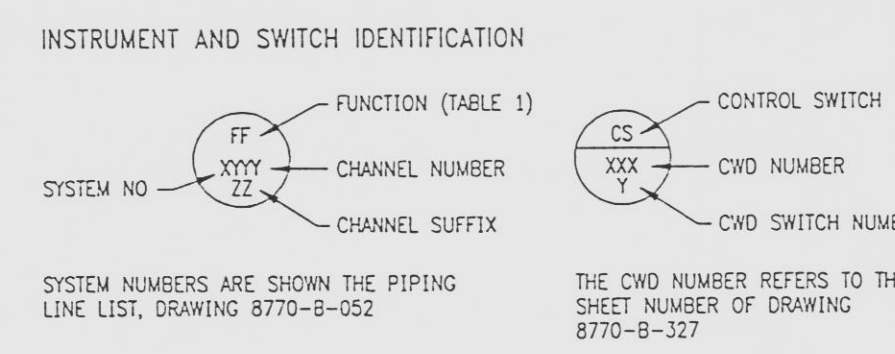
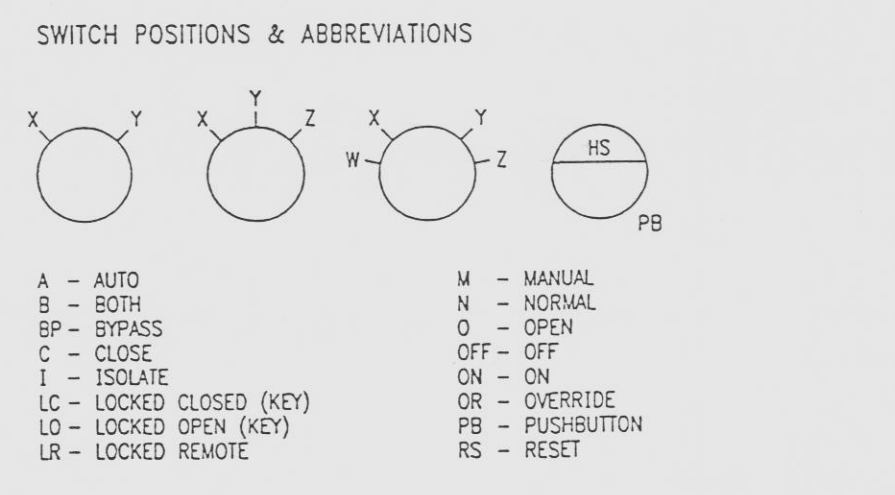
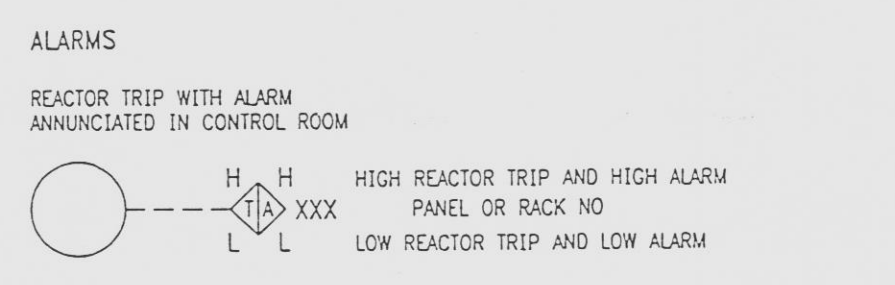
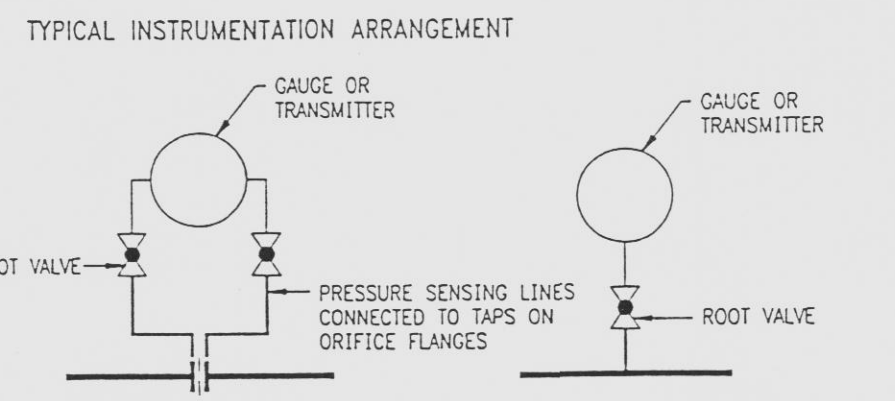
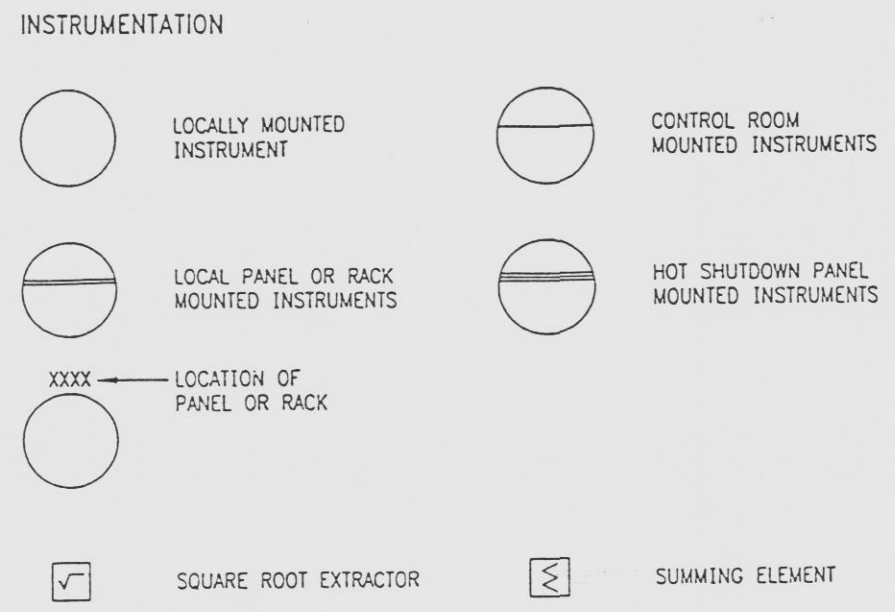


8770-G-078 SH.100

8770-G-078
SH 100



MEASUREMENT CHANNELS ARE SUFFIXED AS FOLLOWS:

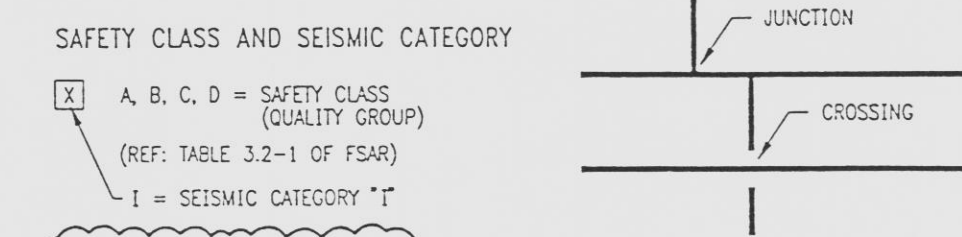
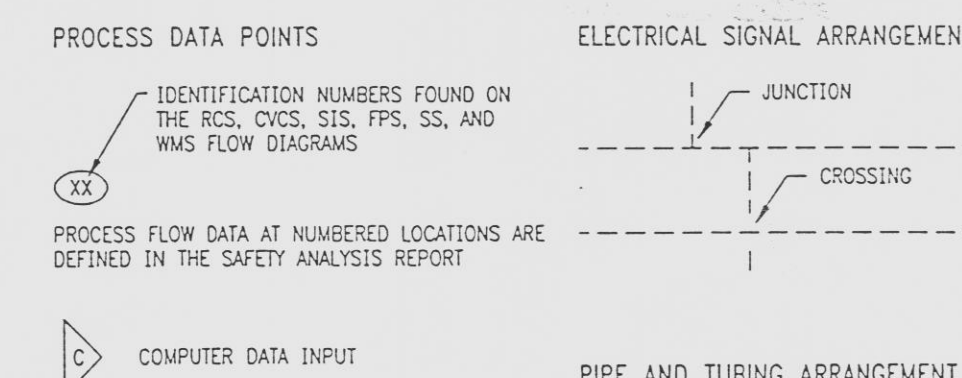
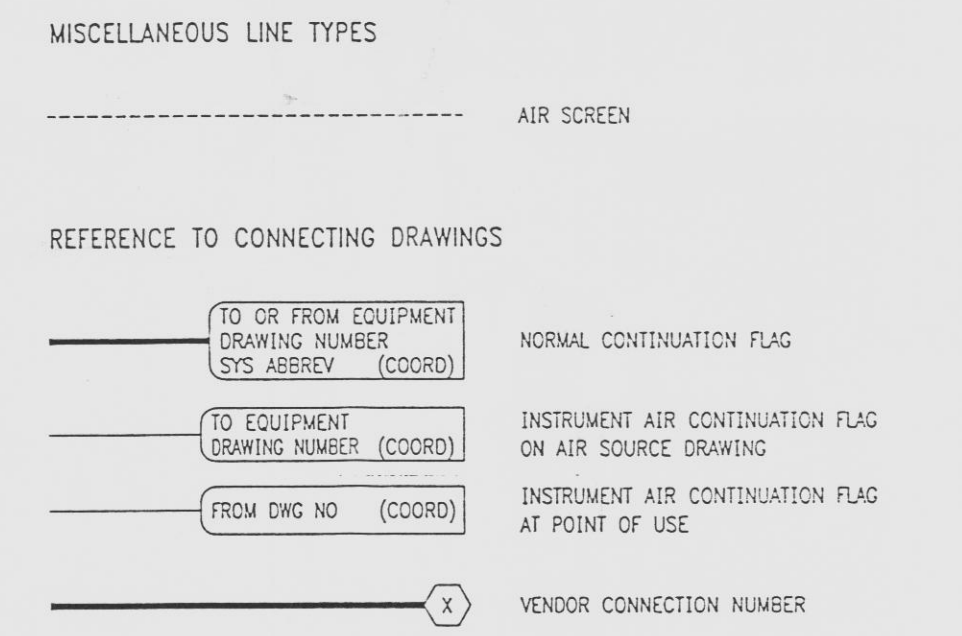
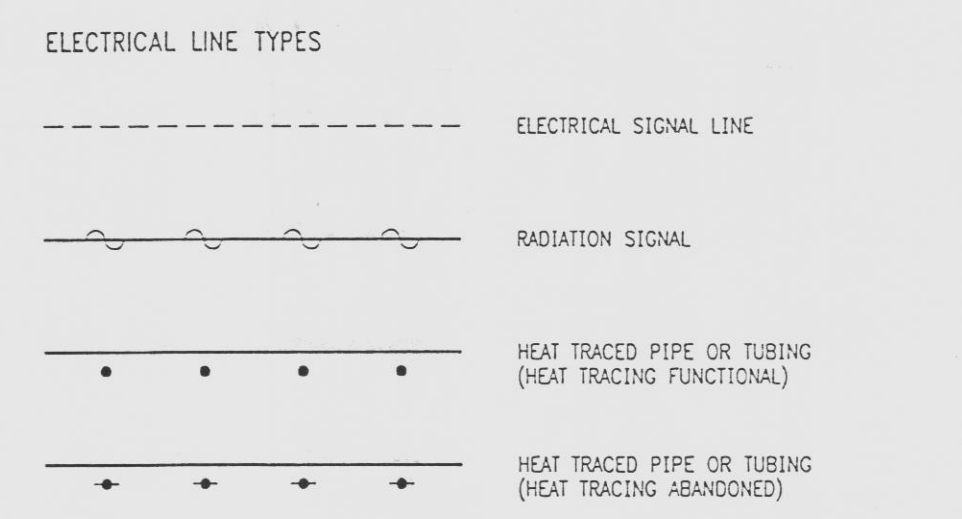
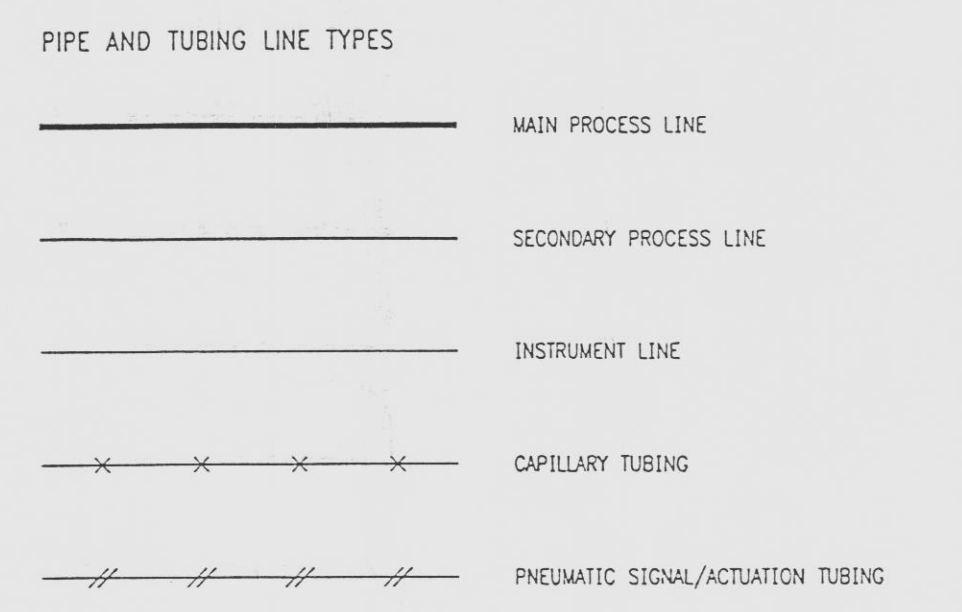
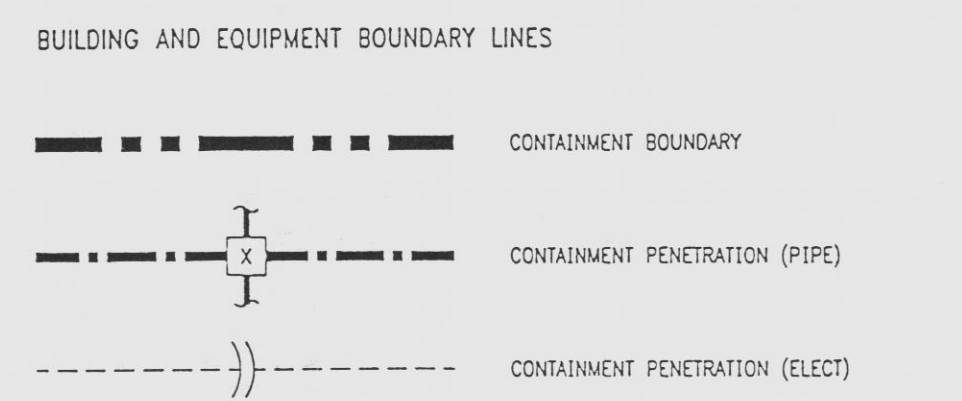
1 - SAFETY CHANNEL NUMBERS ARE SUFFIXED BY A, B, C, AND D ETC

2 - SIMILAR MEASUREMENT CHANNELS ARE SUFFIXED BY X, Y, Z, ETC

3 - "H" AND "C" WHEN USED IN INSTRUMENTATION CHANNEL SUFFIXES DENOTE HOT AND COLD

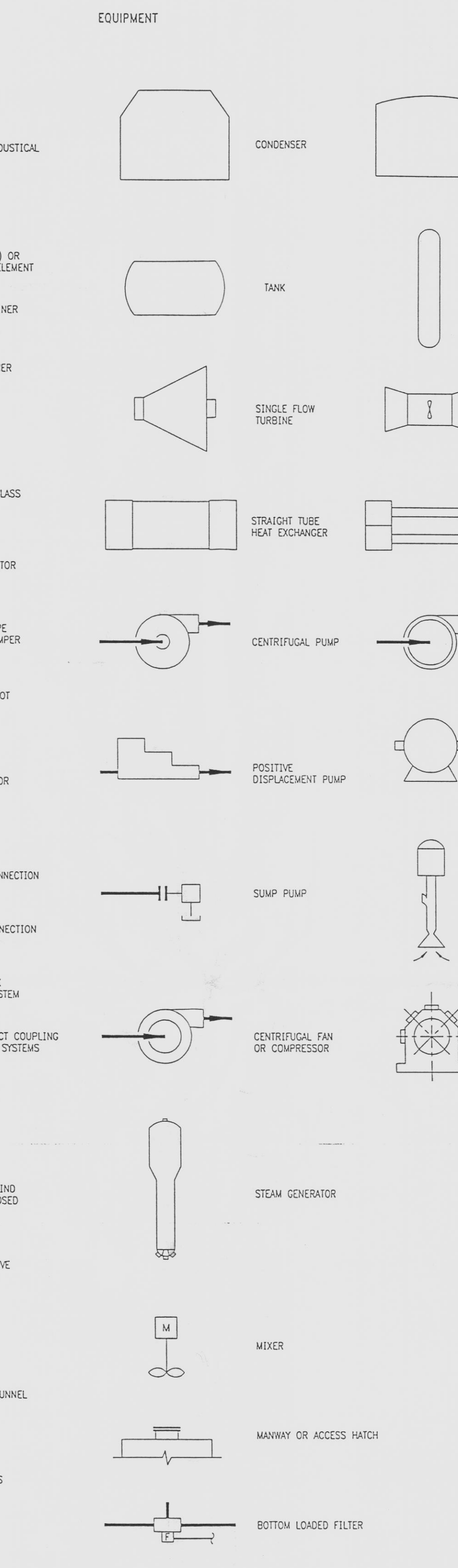
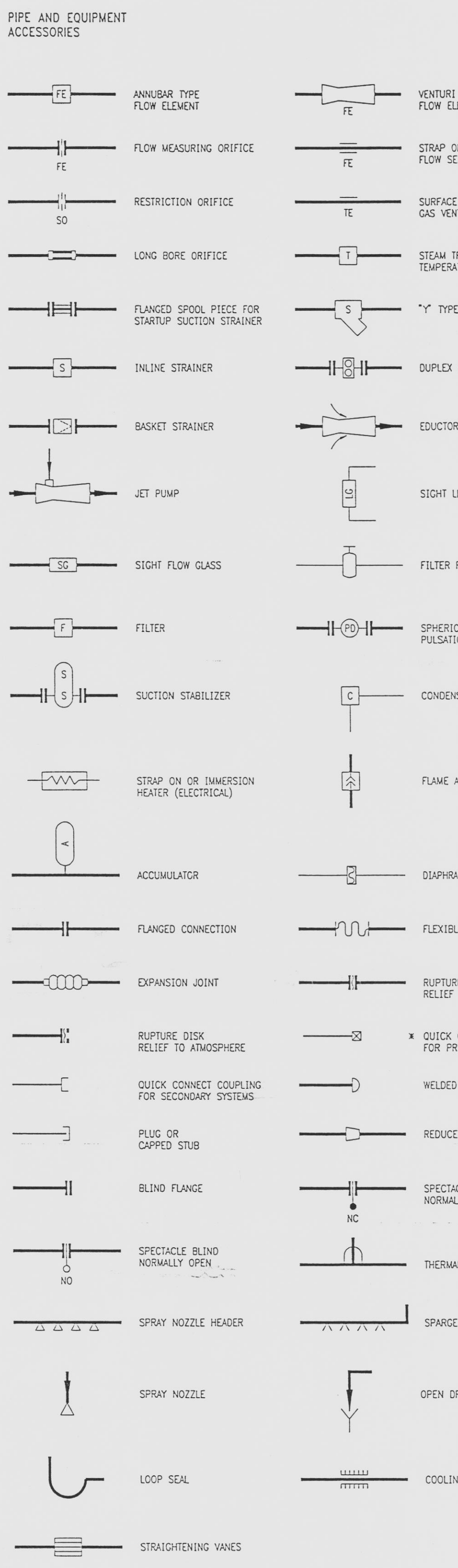
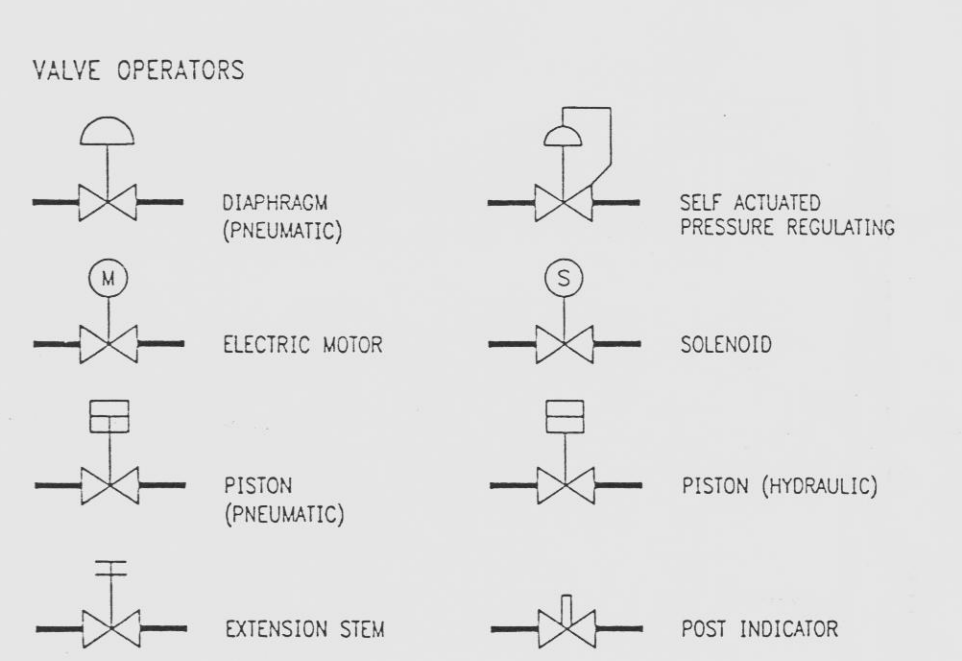
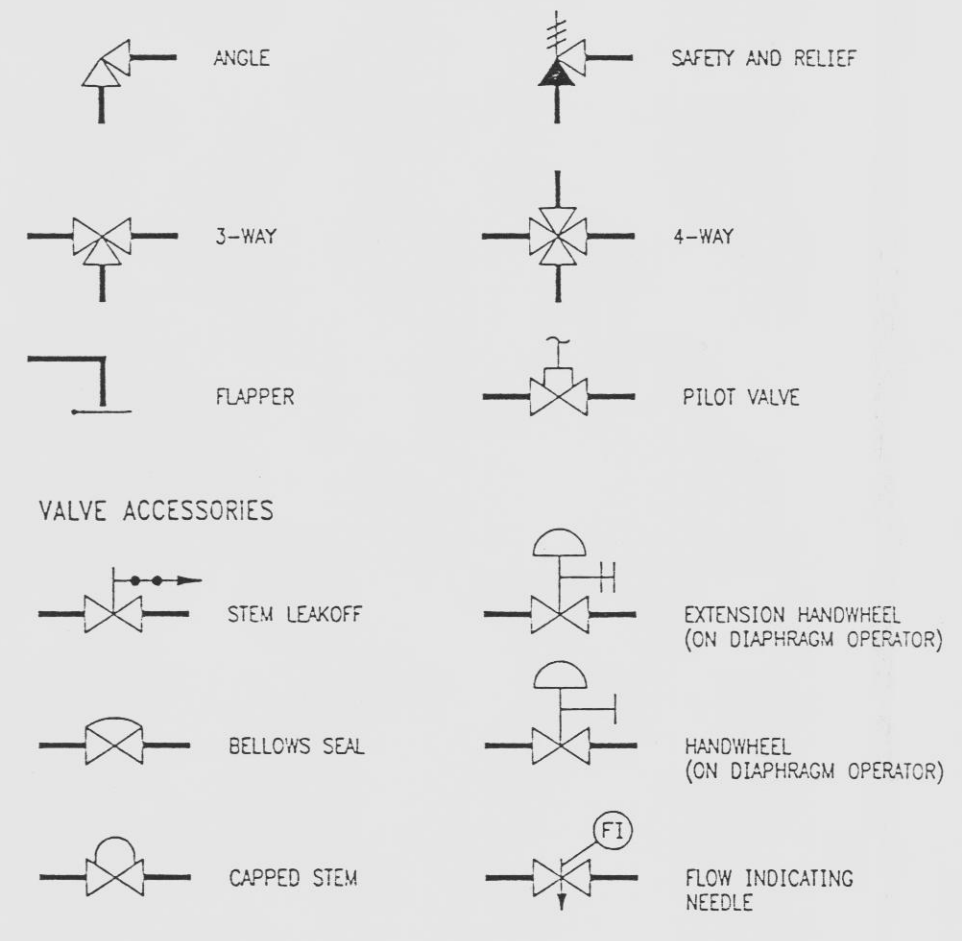
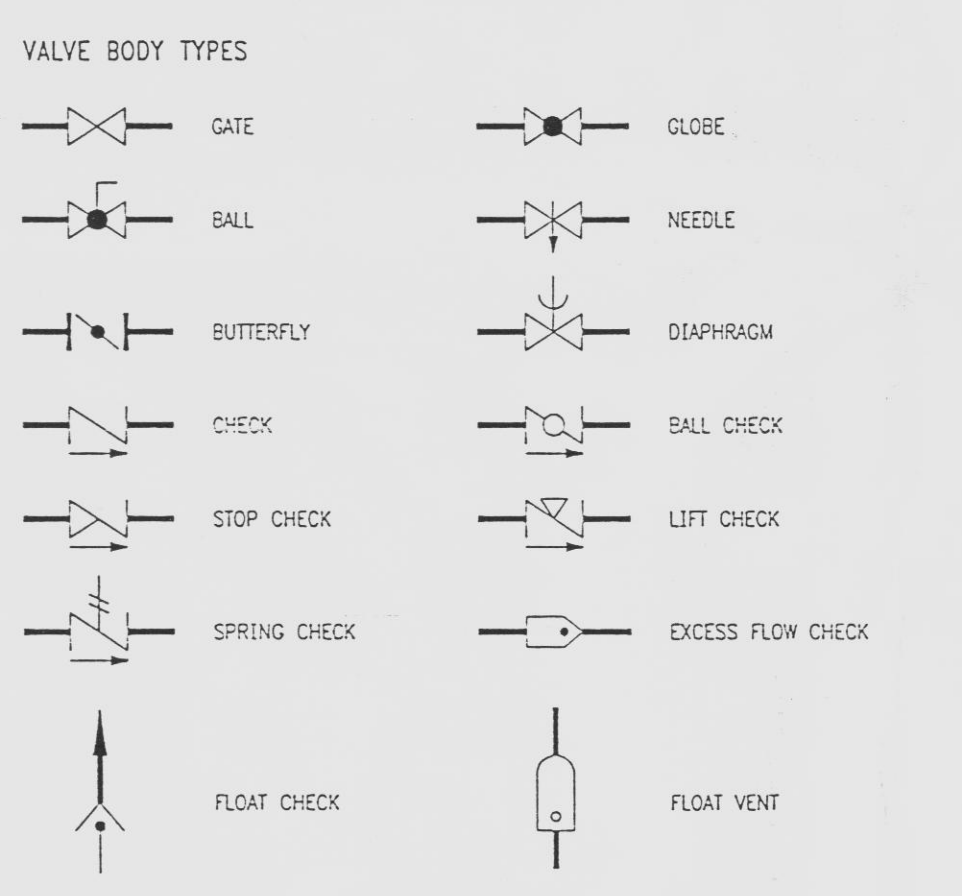
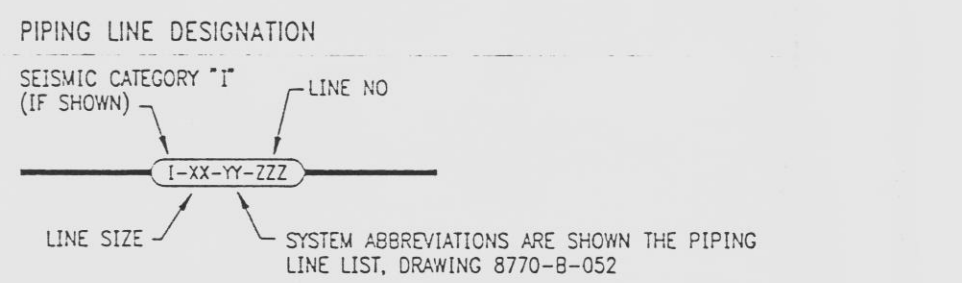
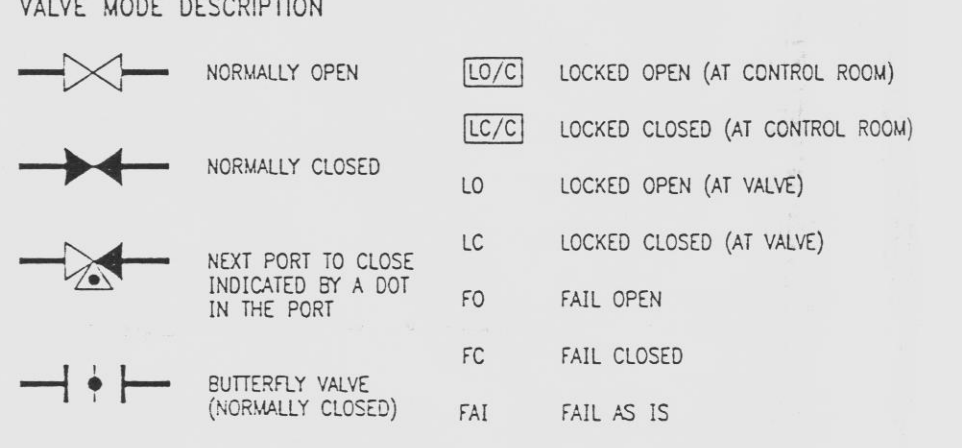
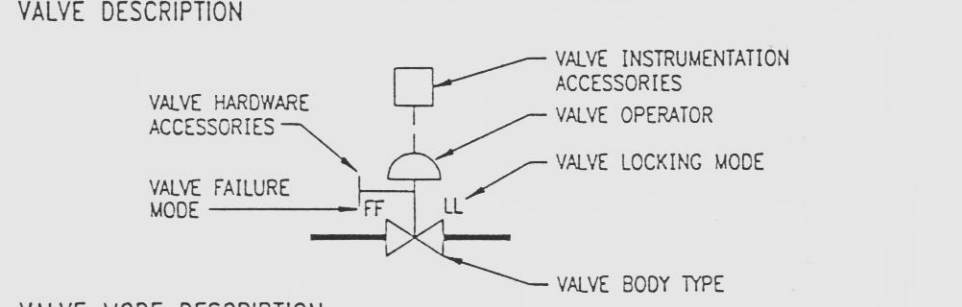
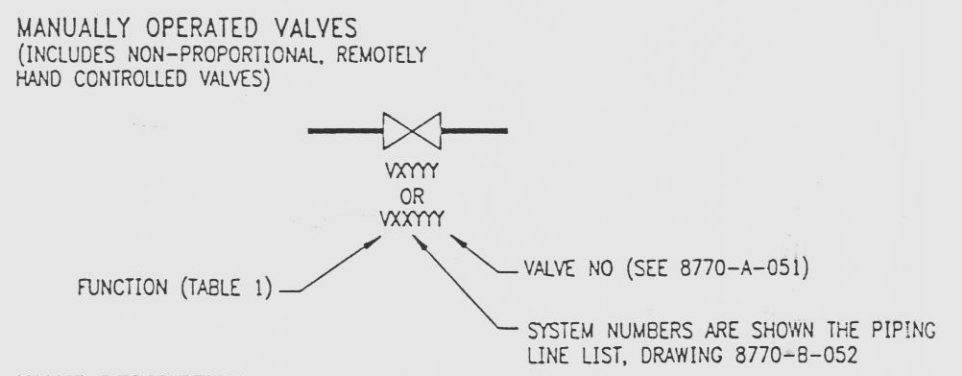
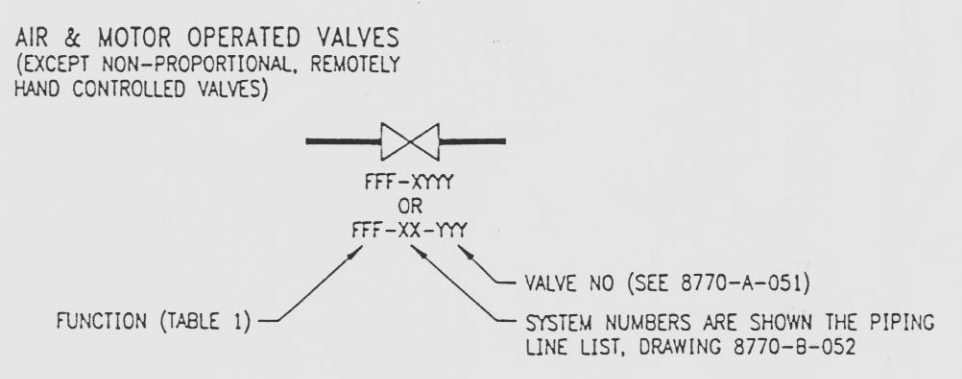
TABLE 1 INSTRUMENT IDENTIFICATION LETTERS DENOTE CHANNEL FUNCTION, NOT SPECIFIC EQUIPMENT

FIRST LETTER	SUCCESSING LETTERS
MEASURED OR INITIATING VARIABLE	READ OUT OR FUNCTION
A AIR	ALARM
C CONDUCTIVITY (ELECTRICAL)	CONTROL
D DENSITY	DIFFERENTIAL
E ELEVATION	ELEVATION
F FLOW RATE	GLASS
G	
H HAND (MANUALLY INITIATED)	
I CURRENT (ELECTRICAL)	INDICATOR
J JUMP	
K TIME OR TIME SCHEDULE	
L LEVEL	LIGHT
M MOISTURE OR HUMIDITY	
N VIBRATION	
P PRESSURE	
Q QUANTITY NUMBER	INTEGRATOR OR TOTALIZER
R RADIATION	RECORDER
S SPEED OR SELECTOR	SWITCH
T TEMPERATURE	TRANSMITTER OR TRANSDUCER
V VALVE	
W WEIGHT	
X TEST POINT OR MISC POWER SUPPLY	
Y ANALYSIS	CONVERTOR
Z POSITION	



ABBREVIATIONS

CIS - CONTAINMENT ISOLATION	AMP - AUTOMATIC CEA WITHDRAWAL PROHIBIT
CSAS - CONTAINMENT SPRAY ACTUATION	BHB - BACKUP HEATER BREAKERS
CAT - CHEMICAL ADDITION TANK (CVCS)	BHC - BACKUP HEATER CONTROL
EDT - EQUIPMENT DRAIN TANK (WMS)	CEOS - CONTROL ELEMENT DRIVE SYSTEM
FT - FLASH TANK	DR - DRAIN
HT - HOLD-UP TANK (WMS)	GA - GAS ANALYZER
QT - QUENCH TANK (RCS)	HPRT - HIGH PRESSURIZER PRESSURE RELIEF VALVE TRIP
OT - RESIN ADDITION TANK (WMS)	N2 - NITROGEN
ROT - REACTOR OIL TANK (WMS)	N/S - NITROGEN SUPPLY
RWT - REFUELING WATER TANK	PHD - PROPORTIONAL HEATER CONTROL
SIT - SAFETY INJECTION TANK (SIS)	PLS - PROGRAMED LEVEL SETPOINT (RRS)
SRT - SPENT RESIN TANK (WMS)	RPS - REACTOR PROTECTIVE SYSTEM
VCT - VOLUME CONTROL TANK (CVCS)	RR - REVERSE ROTATION
	RRS - REACTOR REGULATING SYSTEM
	SCR - PROPORTIONAL HEATER SCR CONTROLLERS
	SG - STEAM GENERATOR
	SIB - SAFETY INJECTION BLOCK
	SIL - SAFETY INJECTION LOGIC
	V - VENT TO ATMOSPHERE



GENERAL NOTES:

1. DENOTES PRESSURE BOUNDARIES (PROCESS PIPING / TUBING / COMPONENTS) FOR SYSTEMS WITHIN THE SCOPE OF LICENSE RENEWAL.

2. DENOTES "IN PROCESS" PIPING / TUBING / COMPONENTS WITHIN THE SCOPE OF LICENSE RENEWAL.

3. QUALITY GROUP A, B OR C BOUNDARIES WITH UNTAGGED CLASS D COMPONENTS SHALL BE CONSIDERED AS A LICENSE RENEWAL BOUNDARY ALTHOUGH NOT IDENTIFIED WITH A LICENSE RENEWAL BOUNDARY FLAG.

REFERENCE DRAWINGS

VALVE AND SPECIALTIES LIST 8770-A-051

PIPING LINE LIST 8770-B-052

VALVE OPERATIONAL NUMBER INDEX 8770-B-053

INSTRUMENT INSTALLATION DETAILS 8770-B-231

NOTE:

* QUICK DISCONNECTS ARE OPTIONAL ITEMS, WHICH MAY BE INSTALLED FOR CONVENIENCE, BUT ARE NOT REQUIRED FOR DESIGN FUNCTIONS.

NOTE:

THIS DRAWING IS MADE FROM REV. 5 OF DRAWING 8770-G-078 SH.100

REVISION OF THIS DRAWING MAY REQUIRE UPDATE OF THE FOLLOWING DOCUMENTS:

- FSAR FIGURE 1.2-20
- FSAR FIGURE 1.2-26
- FSAR FIGURE 1.2-27
- FSAR FIGURE 1.2-28
- FSAR FIGURE 1.2-29

FLORIDA POWER & LIGHT COMPANY
ST. LUCIE PLANT
1976 - 890 MWe INSTALLATION - UNIT 1
FLOW DIAGRAM SYMBOLS

FLORIDA POWER & LIGHT COMPANY

SCALE: NONE	APPROVAL	DATE:
DN: MECH		
DN: P. BERGERON		
CH: G. MOERS		

8770-G-078
SHEET 100