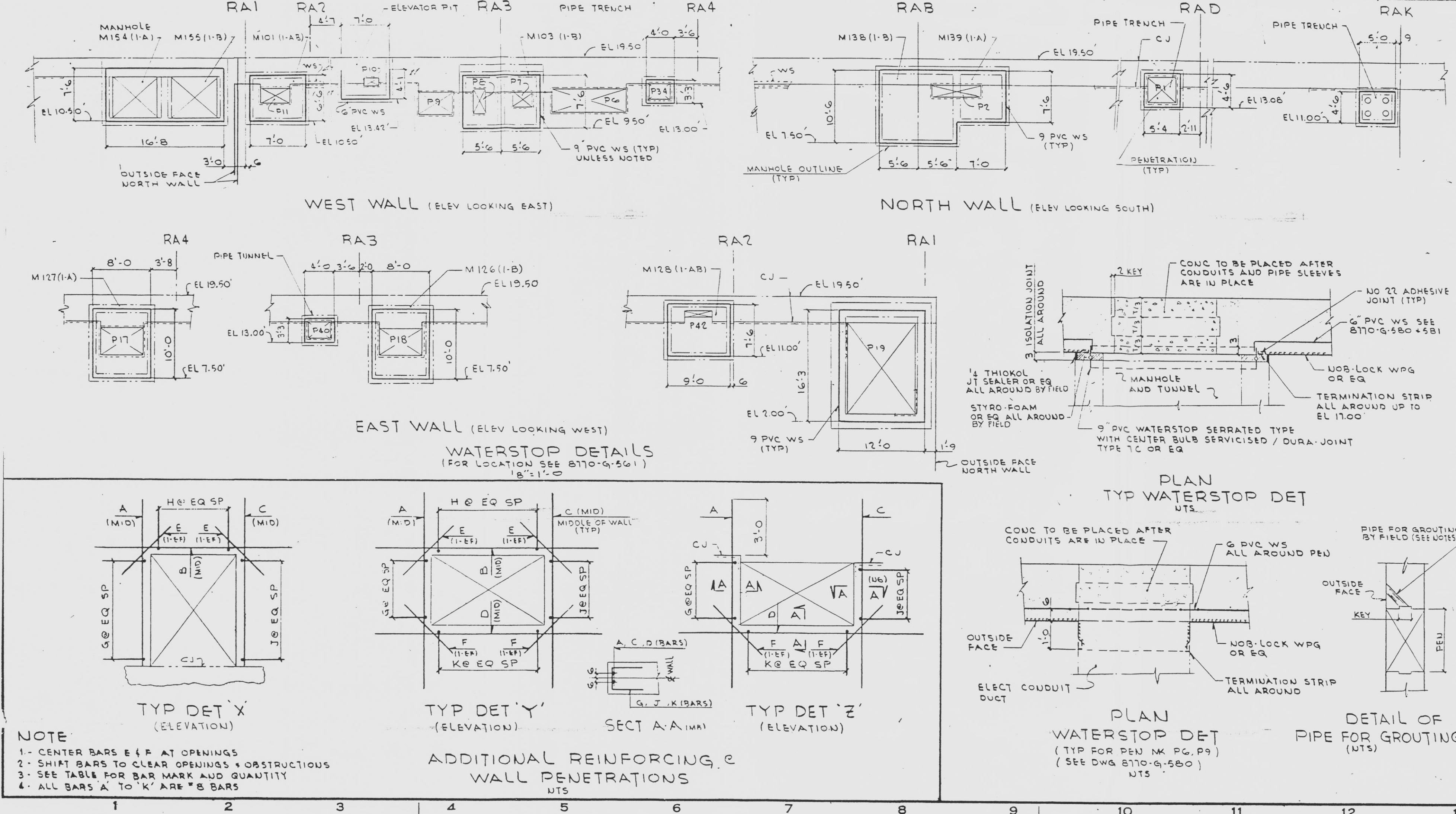


PIPE SLEEVES (SEE TYP DETAIL DWG 8770-G-581/R11)									
MARK	QTY	LENGTH	EL	A	B	REMARKS	DISC		
PS1	10	3'-9"	14.00				M		
PS2	10	3'-9"	14.00				M		
PS3	10	3'-9"	12.33				M		
PS4	10	3'-9"	12.33				M		
PS5	24	4'-3"	16.00				M		
PS6	22	4'-3"	16.00				M		
PS7	10	4'-3"	14.25				M		
PS8	10	3'-9"	14.25				M		
PS9	6	2'-0"	37.50				M		
PS10	6	2'-0"	37.50				M		
PS11	10	3'-0"	15.00				M		
PS12	5	3'-0"	15.50				M		
PS13	5	3'-0"	15.50				M		
PS14	6	3'-6"	14.75				M		
PS15	6	3'-6"	14.75				M		
PS16	10	3'-6"	14.75				M		
PS17	8	2'-0"	23.50				M		
PS18	32	4'-3"	5.50				M		
PS19	32	4'-3"	5.50				M		
PS20	10	4'-3"	7.50				M		
PS21	10	4'-3"	7.50				M		
PS22	28	4'-3"	9.00				M		
PS23	28	4'-3"	9.00				M		
PS24	10	4'-3"	10.75				M		
PS25	10	4'-3"	10.75				M		
PS26	28	4'-3"	12.50				M		
PS27	28	4'-3"	12.50				M		
PS28	16	4'-3"	14.33				M		
PS29	10	4'-3"	14.33				M		
PS30	10	3'-0"	14.75				M		
PS31	10	3'-0"	14.75				M		
PS32	10	3'-0"	14.75				M		
PS33	10	4'-3"	14.25				M		
PS34	10	2'-6"	63.00				M		
PS35	14	2'-6"	73.50				M		

TABLE OF REINFB BARS FOR EXT WALL PENETRATIONS									
TYPE	MARK	QTY	MARK	QTY	MARK	QTY	MARK	QTY	MARK
A	E124	2	E124	2	E107	2	E154	4	E155
B	E148	2	E148	2	E150	2	E154	4	E155
C	E145	1	E151	1	E145	1	E154	4	E156
D	E146	1	E151	1	E146	1	E154	4	E156
E	E145	2	E145	2	E149	2	E154	4	E156
F	E124	2	E147	2	E152	2	E154	4	E156
G	E145	2	E145	2	E145	2	E154	4	E156
H	E152	2	E152	2	E152	2	E154	4	E156
I	E147	2	E147	2	E107	2	E154	4	E156
J	E152	1	E147	1	E152	1	E154	4	E156
K	E152	1	E147	1	E152	1	E154	4	E156
L	E152	1	E147	1	E152	1	E154	4	E156
M	E152	1	E147	1	E152	1	E154	4	E156
N	E152	1	E147	1	E152	1	E154	4	E156
O	E152	1	E147	1	E152	1	E154	4	E156
P	E152	1	E147	1	E152	1	E154	4	E156
Q	E152	1	E147	1	E152	1	E154	4	E156
R	E152	1	E147	1	E152	1	E154	4	E156
S	E152	1	E147	1	E152	1	E154	4	E156
T	E152	1	E147	1	E152	1	E154	4	E156
U	E152	1	E147	1	E152	1	E154	4	E156
V	E152	1	E147	1	E152	1	E154	4	E156
W	E152	1	E147	1	E152	1	E154	4	E156
X	E152	1	E147	1	E152	1	E154	4	E156
Y	E152	1	E147	1	E152	1	E154	4	E156
Z	E152	1	E147	1	E152	1	E154	4	E156



**QUANTITIES** (NET BY FIELD UNLESS NOTED)

FOR REINFB STEEL SEE BAR BENDING SCHEDULE B-480-20

FOR PIPE SLEEVE QUANTITIES SEE TABLE (C) 9

FOR PVC WATER STOP, TERMINATION STRIP & CONC QUANTITIES SEE 8770-G-580

**NOTES**

CURRENT ACI STANDARDS SHALL GOVERN FOR ALL DESIGN AND CONSTRUCTION UNLESS OTHERWISE NOTED.

FOR LOCATION OF PENETRATIONS SEE DWG'S 8770-G-580, 581, 582 & 583

LOCATION AND SITE OF PIPE FOR GROUTING SHALL BE DETERMINED BY FIELD. THE PIPES SHALL BE FILLED WITH CONC AFTER GROUTING AND PATCHED WITH UOB-LOCK AS PER MFR INSTRUCTIONS FOR WATERPROOFING SPECIFICATION SEE NOTE 8770-G-488

ALL EXPOSED STEEL SURFACES SHALL BE BLAST CLEANED IN ACCORDANCE WITH STEEL STRUCTURES PAINTING COUNCIL SURFACE PREPARATION SP6 COMMERCIAL BLAST CLEANING. BLAST CLEANED STEEL SHALL BE SHOP PRIMED WITHIN 24 HOURS OF CLEANING. SHOP PRIMER SHALL BE OUE COAT 1/2 MIL DRY FILM THICKNESS OF CARBOLINE WELD AS MANUFACTURED BY THE CARBOLINE COMPANY APPLIED IN STRICT ACCORDANCE WITH THE MANUFACTURERS INSTRUCTIONS.

DISC - INDICATES DISCIPLINE. H - INDICATES HVAC. M - INDICATES MECHANICAL. A - INDICATES ARCHITECT. P - INDICATES PLUMBING. E - INDICATES ELECT. I - INDICATES INSTRUMENTATION. W - INDICATES WATERPROOFING. NA - INDICATES NOT APPLICABLE. FOR ADD'L NOTES SEE 8770-G-580 (581)

**REFERENCE DRAWINGS**

8770-G-146

8770-G-147

8770-G-148

8770-G-149

8770-G-150

8770-G-151

8770-G-152

8770-G-153

8770-G-154

8770-G-155

8770-G-156

8770-G-157

8770-G-158

8770-G-159

8770-G-160

8770-G-161

8770-G-162

8770-G-163

8770-G-164

8770-G-165

8770-G-166

8770-G-167

8770-G-168

8770-G-169

8770-G-170

8770-G-171

8770-G-172

8770-G-173

8770-G-174

8770-G-175

8770-G-176

8770-G-177

8770-G-178

8770-G-179

8770-G-180

8770-G-181

8770-G-182

8770-G-183

8770-G-184

8770-G-185

8770-G-186

8770-G-187

8770-G-188

8770-G-189

8770-G-190

8770-G-191

8770-G-192

8770-G-193

8770-G-194

8770-G-195

8770-G-196

8770-G-197

8770-G-198

8770-G-199

8770-G-200

8770-G-201

8770-G-202

8770-G-203

8770-G-204

8770-G-205

8770-G-206

8770-G-207

8770-G-208

8770-G-209

8770-G-210

8770-G-211

8770-G-212

8770-G-213

8770-G-214

8770-G-215

8770-G-216

8770-G-217

8770-G-218

8770-G-219

8770-G-220

8770-G-221

8770-G-222

8770-G-223

8770-G-224

8770-G-225

8770-G-226

8770-G-227

8770-G-228

8770-G-229

8770-G-230

8770-G-231

8770-G-232

8770-G-233

8770-G-234

8770-G-235

8770-G-236

8770-G-237

8770-G-238

8770-G-239

8770-G-240

8770-G-241

8770-G-242

8770-G-243

8770-G-244

8770-G-245

8770-G-246

8770-G-247

8770-G-248

8770-G-249

8770-G-250

8770-G-251

8770-G-252

8770-G-253

8770-G-254

8770-G-255

8770-G-256

8770-G-257

8770-G-258

8770-G-259

8770-G-260

8770-G-261

8770-G-262

8770-G-263

8770-G-264

8770-G-265

8770-G-266

8770-G-267

8770-G-268

8770-G-269

8770-G-270

8770-G-271

8770-G-272

8770-G-273

8770-G-274

8770-G-275

8770-G-276

8770-G-277

8770-G-278

8770-G-279

8770-G-280

8770-G-281

8770-G-282

8770-G-283

8770-G-284

8770-G-285

8770-G-286

8770-G-287

8770-G-288

8770-G-289

8770-G-290

8770-G-291

8770-G-292

8770-G-293

8770-G-294

8770-G-295

8770-G-296

8770-G-297

8770-G-298

8770-G-299

8770-G-300

8770-G-301

8770-G-302

8770-G-303

8770-G-304

8770-G-305

8770-G-306

8770-G-307

8770-G-308

8770-G-309

8770-G-310

8770-G-311

8770-G-312

8770-G-313

8770-G-314

8770-G-315

8770-G-316

8770-G-317

8770-G-318

8770-G-319

8770-G-320

8770-G-321

8770-G-322

8770-G-323

8770-G-324

8770-G-325

8770-G-326

8770-G-327

8770-G-328

8770-G-329

8770-G-330

8770-G-331

8770-G-332

8770-G-333

8770-G-334

8770-G-335

8770-G-336

8770-G-337

8770-G-338

8770-G-339

8770-G-340

8770-G-341

8770-G-342

8770-G-343

8770-G-344

8770-G-345

8770-G-346

8770-G-347

8770-G-348

8770-G-349

8770-G-350

8770-G-351

8770-G-352

8770-G-353

8770-G-354

8770-G-355

8770-G-356

8770-G-357

8770-G-358

8770-G-359

8770-G-360

8770-G-361

8770-G-362

8770-G-363

8770-G-364

8770-G-365

8770-G-366

8770-G-367

8770-G-368

8770-G-369

8770-G-370

8770-G-371

8770-G-372

8770-G-373

8770-G-374

8770-G-375

8770-G-376

8770-G-377

8770-G-378

8770-G-379

8770-G-380

8770-G-381

8770-G-382

8770-G-383

8770-G-384

8770-G-385

8770-G-386

8770-G-387

8770-G-388

8770-G-389

8770-G-390

8770-G-391

8770-G-392

8770-G-393

8770-G-394

8770-G-395

8770-G-396

8770-G-397

8770-G-398

8770-G-399

8770-G-400

8770-G-401

8770-G-402

8770-G-403

8770-G-404

8770-G-405

8770-G-406

8770-G-407

8770-G-408

8770-G-409

8770-G-410

8770-G-411

8770-G-412

8770-G-413

8770-G-414

8770-G-415

8770-G-416

8770-G-417

8770-G-418

8770-G-419

8770-G-420

8770-G-421

8770-G-422

8770-G-423

8770-G-424

8770-G-425

8770-G-426

8770-G-427

8770-G-428

8770-G-429

8770-G-430

8770-G-431

8770-G-432

8770-G-433

8770-G-434

8770-G-435

8770-G-436

8770-G-437

8770-G-438

8770-G-439

8770-G-440

8770-G-441

8770-G-442

8770-G-443

8770-G-444

8770-G-445

8770-G-446

8770-G-447

8770-G-448

8770-G-449

8770-G-450

8770-G-451

8770-G-452

8770-G-453

8770-G-454

8770-G-455

8770-G-456

8770-G-457

8770-G-458

8770-G-459

8770-G-460

8770-G-461

8770-G-462

8770-G-463

8770-G-464

8770-G-465

8770-G-466

8770-G-467

8770-G-468

8770-G-469

8770-G-470

8770-G-471

8770-G-472

8770-G-473

8770-G-474

8770-G-475

8770-G-476

8770-G-477

8770-G-478

8770-G-479

8770-G-480

8770-G-481

8770-G-482

8770-G-483

8770-G-484

8770-G-485

8770-G-486

8770-G-487

8770-G-488

8770-G-489

8770-G-490

8770-G-491

8770-G-492

8770-G-493

8770-G-494

8770-G-495

8770-G-496

8770-G-497

8770-G-498

8770-G-499

8770-G-500

8770-G-501

8770-G-502

8770-G-503

8770-G-504

8770-G-505

8770-G-506

8770-G-507

8770-G-508

8770-G-509

8770-G-510

8770-G-511

8770-G-512

8770-G-513

8770-G-514

8770-G-515

8770-G-516

8770-G-517

8770-G-518

8770-G-519

8770-G-520

8770-G-521

8770-G-522

8770-G-523

8770-G-524

8770-G-525

8770-G-526

8770-G-527

8770-G-528

8770-G-529

8770-G-530

8770-G-531

8770-G-532

8770-G-533

8770-G-534

8770-G-535

8770-G-536

8770-G-537

8770-G-538

8770-G-539

8770-G-540

8770-G-541

8770-G-542

8770-G-543

8770-G-544

8770-G-545

8770-G-546

8770-G-547

8770-G-548

8770-G-549

8770-G-550

8770-G-551

8770-G-552

8770-G-553

8770-G-554

8770-G-555

8770-G-556

8770-G-557

8770-G-558

8770-G-559

8770-G-560

8770-G-561

8770-G-562

8770-G-563

8770-G-564

8770-G-565

8770-G-566

8770-G-567

8770-G-568

8770-G-569

8770-G-570

8770-G-571

8770-G-572

8770-G-573

8770-G-574

8770-G-575

8770-G-576

8770-G-577

8770-G-578

8770-G-579

8770-G-580

8770-G-581

8770-G-582

8770-G-583

8770-G-584

8770-G-585

8770-G-586

8770-G-587

8770-G-588

8770-G-589

8770-G-590

8770-G-591

8770-G-592

8770-G-593

8770-G-594

8770-G-595

8770-G-596

8770-G-597

8770-G-598

8770-G-599

8770-G-600

8770-G-601

8770-G-602

8770-G-603

8770-G-604

8770-G-605

8770-G-606

8770-G-607

8770-G-608

8770-G-609

8770-G-610

8770-G-611

8770-G-612

8770-G-613

8770-G-614

8770-G-615

8770-G-616

8770-G-617

8770-G-618

8770-G-619

8770-G-620

8770-G-621

8770-G-622

8770-G-623

8770-G-624

8770-G-625

8770-G-626

8770-G-627

8770-G-628

8770-G-629

8770-G-630

8770-G-631

8770-G-632

8770-G-633

8770-G-634

8770-G-635

8770-G-636

8770-G-637

8770-G-638

8770-G-639

8770-G-640

8770-G-641

8770-G-642

8770-G-643

8770-G-644

8770-G-645

8770-G-646

8770-G-647

8770-G-648

8770-G-649

8770-G-650

8770-G-651

8770-G-652

8770-G-653

8770-G-654

8770-G-655

8770-G-656