

DRAWING NUMBER

DRAWING NUMBER

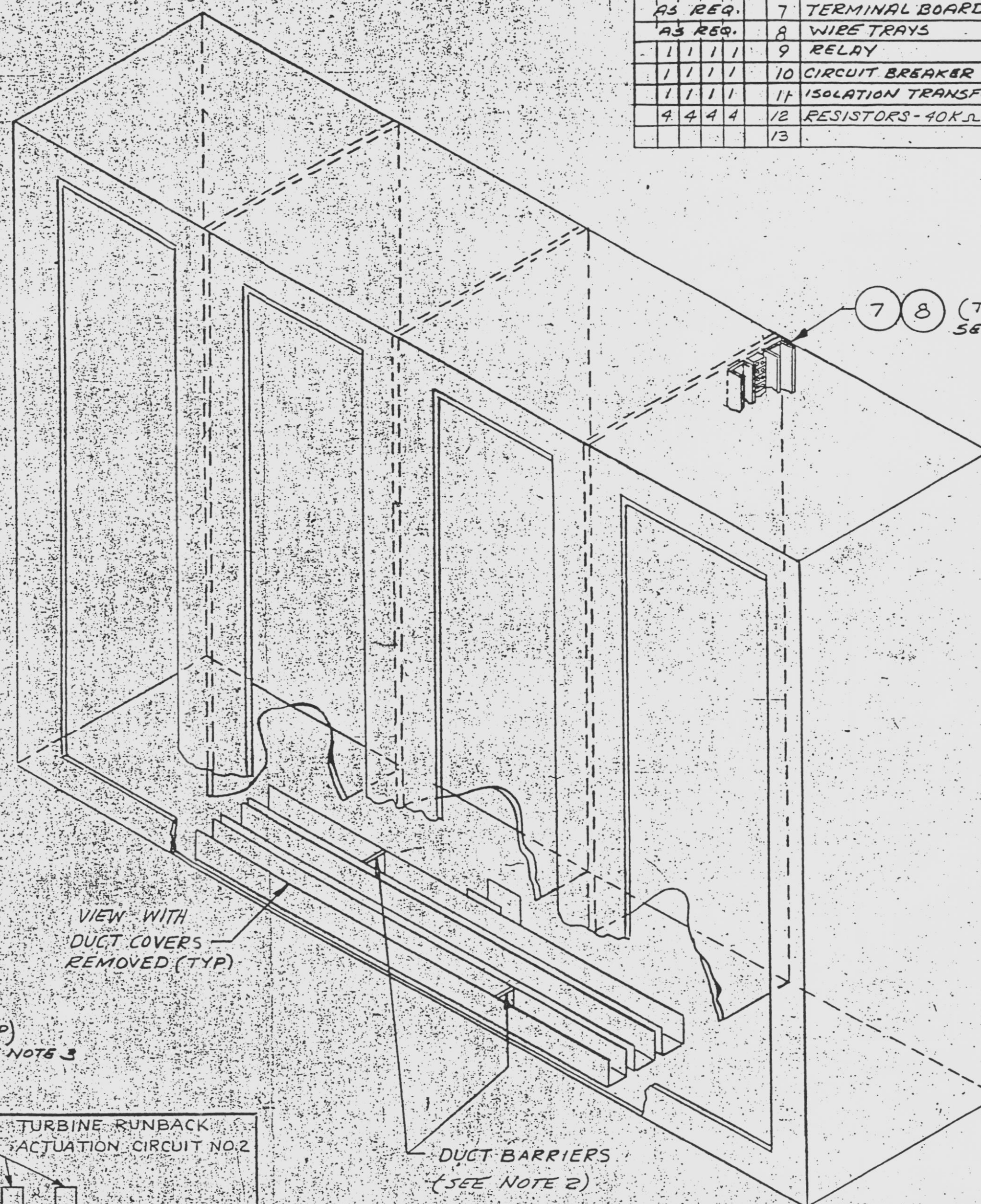
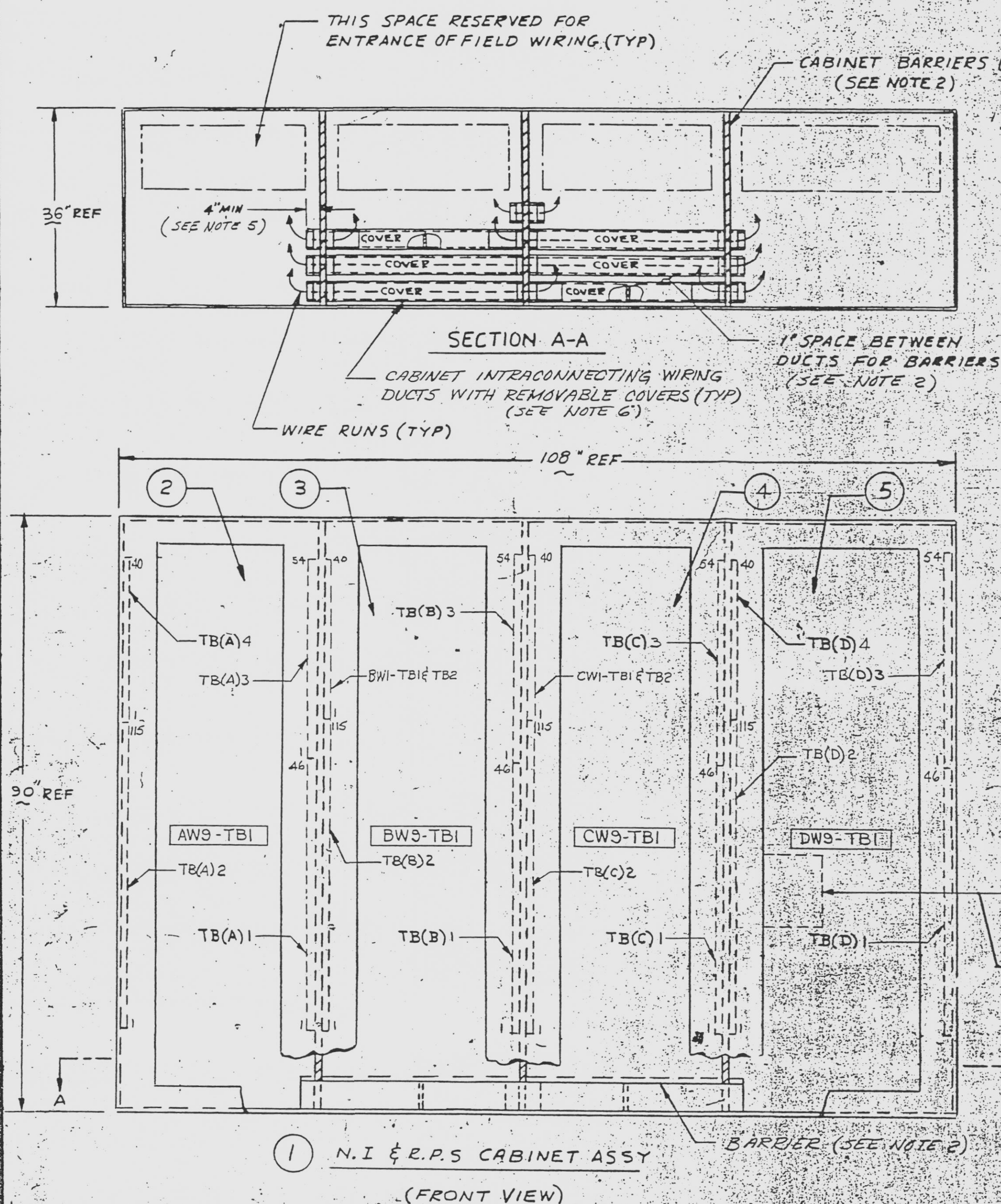
DRAWING NUMBER

DRAWING NUMBER

FLUOR DYNALCO CORPORATION • 10000 LANTANA DRIVE  
FORT LAUDERDALE, FLORIDA 33304FLUOR DYNALCO CORPORATION • 10000 LANTANA DRIVE  
FORT LAUDERDALE, FLORIDA 33304FLUOR DYNALCO CORPORATION • 10000 LANTANA DRIVE  
FORT LAUDERDALE, FLORIDA 33304

BILL OF MATERIALS					
QUANTITIES ARE FOR					
GROUP NO. & QUANTITY	ITEM NO.	NAME	PIECE NO.	MATERIAL	REMARKS
16 5 4 3 2 1	14	TRAC-2 ASSEMBLY	E-19367-411-022-14		SEE NOTE 9
	15	PUSH BUTTON PB1 & PB2			MATERIAL SWITCH 9881-12 WITH AC2
	16	METER 150-VDC			WESTON 311-1822150
	17	CONNECTOR PAIR J1	E-19367-411-022-17		W53102-A-20-285

BILL OF MATERIALS					
QUANTITIES ARE FOR					
GROUP NO. & QUANTITY	ITEM NO.	NAME	PIECE NO.	MATERIAL	REMARKS
6 5 4 3 2 1	1	N.I.E.R.P.S. CABINET ASSY	D-19367-411-022-1		SEE SPEC 19367-ICE-S01
	2	CABINET ASSY A			
	3	B			
	4	C			
	5	CABINET ASSY D			
1 1 1 1	6	CIRCUIT BREAKER (10AMP/20VAC)			HEINEMANN EXAMIS16
AS REQ.	7	TERMINAL BOARDS			SEE NOTE 4
AS REQ.	8	WIRE TRAYS			PANDUIT TYPE C-6 EQUAL
1 1 1 1	9	RELAY			GE J2N4V13 AIR
1 1 1 1	10	CIRCUIT BREAKER (7AMP/20VAC)			HEINEMANN EXAMIS16
1 1 1 1	11	ISOLATION TRANSFORMER			TRIAD N-64 AC
4 4 4 4	12	RESISTORS - 40K $\Omega$ - $\frac{1}{2}$ WATT	D-19367-411-022-12		SEE NOTE 7
	13				



- BEFORE SHIPMENT OF CABINET ASSY, STUFF ALL CABINET INTRACONNECTING WIRING DUCTS WITH FIREPROOF FILLING MATERIAL SUBJECT TO CENPD APPROVAL.
- CONDUITS TERMINATING IN A CABINET SHALL EXTEND A MINIMUM OF 4" FROM FIREPROOF BARRIER.
- ALL TERMINAL BLOCKS SHALL BE MEDIUM AND/OR HEAVY DUTY TYPE INDUSTRIAL BLOCKS SUBJECT TO CENPD APPROVAL.
- LOCATION OF ITEMS 6 THRU 12 AND 14 THRU 17 ARE SUBJECT TO CENPD APPROVAL. LOCATIONS SHOWN ARE FOR REFERENCE ONLY.
- FIREPROOF ISOLATION BARRIERS SHALL BE PROVIDED AT POSITIONS SHOWN. REFER TO SPEC. NO. 19367-ICE-S01 FOR DETAILED BARRIER REQUIREMENTS.
- RESISTORS R1-R4 TO BE MOUNTED ON BOARD AS CLOSE TO RELAY (ITEM 9) AS POSSIBLE. SEE DWG. E-19367-411-013 SHEET 4.
- ALL EDGES THAT MIGHT COME IN CONTACT WITH CABLES SHALL BE COVERED WITH PROTECTIVE SLEEVES.

D-19367-411-022

AS-BUILT

COMPONENT CODE #  
91-2552-6000FLORIDA POWER & LIGHT CO.  
HUTCHINSON ISLAND PLANT - UNIT NO. 1  
1973 - 890 MW INSTALLATIONNUCLEAR INSTRUMENTATION  
& REACTOR PROTECTIVE  
SYSTEM CABINET  
ASSEMBLY

D-19367-411-022

SHEET OF 05

REV.	DESCRIPTION	DATE	BY	CHK.	APP.	REV.	DESCRIPTION	DATE	BY	CHK.	APP.	REV.	DESCRIPTION	DATE	BY	CHK.	APP.
05	DELETED (ITEM 13) UPGRADED TO AS BUILT PER REQ 19367-330	11/1/70	11/1/70	11/1/70	11/1/70	04	ADDED: 12V TBI, BW9-TBI, CW9-TBI, DW9-TBI, TB(A)1, TB(B)1, TB(C)1, TB(D)1, TB(A)2, TB(B)2, TB(C)2, TB(D)2, TB(A)3, TB(B)3, TB(C)3, TB(D)3, TB(A)4, TB(B)4, TB(C)4, TB(D)4	11/1/70	11/1/70	11/1/70	11/1/70	03	UPGRADED TO "APPD REF DES" PER REV REQ 19367-88	11/1/70	11/1/70	11/1/70	11/1/70
04	DELETED: 12V TBI, BW9-TBI, CW9-TBI, DW9-TBI, TB(A)1, TB(B)1, TB(C)1, TB(D)1, TB(A)2, TB(B)2, TB(C)2, TB(D)2, TB(A)3, TB(B)3, TB(C)3, TB(D)3, TB(A)4, TB(B)4, TB(C)4, TB(D)4	11/1/70	11/1/70	11/1/70	11/1/70	02	ADDED: 12V TBI, BW9-TBI, CW9-TBI, DW9-TBI, TB(A)1, TB(B)1, TB(C)1, TB(D)1, TB(A)2, TB(B)2, TB(C)2, TB(D)2, TB(A)3, TB(B)3, TB(C)3, TB(D)3, TB(A)4, TB(B)4, TB(C)4, TB(D)4	11/1/70	11/1/70	11/1/70	11/1/70	01	ADDED: 12V TBI, BW9-TBI, CW9-TBI, DW9-TBI, TB(A)1, TB(B)1, TB(C)1, TB(D)1, TB(A)2, TB(B)2, TB(C)2, TB(D)2, TB(A)3, TB(B)3, TB(C)3, TB(D)3, TB(A)4, TB(B)4, TB(C)4, TB(D)4	11/1/70	11/1/70	11/1/70	11/1/70

DRAWN BY: *ml*  
CHECKER: *ml*  
APPROVALS: *ml*  
FLUOR DYNALCO CORPORATION  
NUCLEAR POWER DEPARTMENT  
WINDSOR, CONNECTICUT  
THIS DRAWING IS THE PROPERTY OF  
FLUOR DYNALCO CORPORATION  
AND IS NOT TO BE REPRODUCED OR  
USED TO FURNISH ANY INFORMATION FOR MAKING  
OF DRAWINGS OR APPARATUS EXCEPT WHERE PROVIDED  
FOR BY AGREEMENT WITH SAID COMPANY.

DESIGN	INC	DATE
MECHANICAL	1	11/1/70
ELECTRICAL	1	11/1/70
INSTRUMENTATION	1	11/1/70
PLUMBING	1	11/1/70
ENGINEERING	1	11/1/70
CONSTRUCTION	1	11/1/70
STANDARD DIST	1	11/1/70
FOR INFO ONLY	1	11/1/70

RECEIVED

FEB 28 1976

EBASCO SERVICES  
ST. LUCIE PLANT8770-1295 R4  
FLORIDA POWER & LIGHT COMPANY  
HUTCHINSON ISLAND PLANT - UNIT #1  
1973 - 890 MW INSTALLATION

REV.	DESCRIPTION	DATE	BY	CHK.	APP.
01	ISSUED FOR FABRICATION	11/1/70	11/1/70	11/1/70	11/1/70
02	REVIEWED WITH COMMENTS AS NOTED	11/1/70	11/1/70	11/1/70	11/1/70
03	NOT APPLICABLE	11/1/70	11/1/70	11/1/70	11/1/70
04	NO COMMENTS AS PER REQ 19367-330	11/1/70	11/1/70	11/1/70	11/1/70
05	NOT FOR INSTALLATION	11/1/70	11/1/70	11/1/70	11/1/70
06	NOT FOR PRODUCTION	11/1/70	11/1/70	11/1/70	11/1/70
07	REPRODUCIBLE	11/1/70	11/1/70	11/1/70	11/1/70
08	REPRODUCIBLE	11/1/70	11/1/70	11/1/70	11/1/70
09	REPRODUCIBLE	11/1/70	11/1/70	11/1/70	11/1/70
10	REPRODUCIBLE	11/1/70	11/1/70	11/1/70	11/1/70
11	REPRODUCIBLE	11/1/70	11/1/70	11/1/70	11/1/70
12	REPRODUCIBLE	11/1/70	11/1/70	11/1/70	11/1/70
13	REPRODUCIBLE	11/1/70	11/1/70	11/1/70	11/1/70
14	REPRODUCIBLE	11/1/70	11/1/70	11/1/70	11/1/70
15	REPRODUCIBLE	11/1/70	11/1/70	11/1/70	11/1/70
16	REPRODUCIBLE	11/1/70	11/1/70	11/1/70	11/1/70
17	REPRODUCIBLE	11/1/70	11/1/70	11/1/70	11/1/70

NUCLEAR INSTRUMENTATION  
& REACTOR PROTECTIVE  
SYSTEM CABINET  
ASSEMBLY  
D-19367-411-022  
SHEET OF 05  
FLUOR DYNALCO CORPORATION  
NUCLEAR POWER DEPARTMENT  
WINDSOR, CONNECTICUT  
THIS DRAWING IS THE PROPERTY OF  
FLUOR DYNALCO CORPORATION  
AND IS NOT TO BE REPRODUCED OR  
USED TO FURNISH ANY INFORMATION FOR MAKING  
OF DRAWINGS OR APPARATUS EXCEPT WHERE PROVIDED  
FOR BY AGREEMENT WITH SAID COMPANY.EBASCO SERVICES INCORPORATED  
2 RECTOR ST., NEW YORK, N.Y. 10006

606/11/70