

NRC DISTRIBUTION FOR PART 50 DOCKET MATERIAL
(TEMPORARY FORM)

CONTROL NO: 8494

FILE: _____

FROM: Florida Power & Light Co. Miami, Fla. Robert E. Uhrig		DATE OF DOC 8-5-75	DATE REC'D 8-11-75	LTR XXX	TWX	RPT	OTHER
TO: Mr. Donald F. Knuth		ORIG 1-signed	CC 2	OTHER	SENT NRC PDR _____ SENT LOCAL PDR _____		
CLASS	UNCLASS	PROP INFO	INPUT	NO CYS REC'D 3	DOCKET NO: 50-335		

DESCRIPTION:
On 7-23-75 during the final cleaning the "1B1" steam generator primary head on the cold side at St. Lucie Unit No. 1 an area of corrosion (rust) was detected

ENCLOSURES:

ACKNOWLEDGED

DO NOT REMOVE

PLANT NAME: St. Lucie #1

FOR ACTION/INFORMATION

8-12-75 JGB

BUTLER (L) W/ Copies	SCHWENCER (L) W/ Copies	ZIEMANN (L) W/ Copies	REGAN (E) W/ Copies
CLARK (L) W/ Copies	STOLZ (L) W/ Copies	DICKER (E) W/ Copies	LEAR (L) W/ Copies
PARR (L) W/ Copies	VASSALLO (L) W/ Copies	KNIGHTON (E) W/ Copies	SPIES W/ Copies
KNIEL (L) W/ Copies	PURPLE (L) W/ Copies	YOUNGBLOOD (E) W/ Copies	LPM W/ Copies

INTERNAL DISTRIBUTION

REG FILE NRC PDR OGC, ROOM P-506A GOSSICK/STAFF CASE GIAMBUSO BOYD MOORE (L) DEYOUNG (L) SKOVHOLT (L) GOLLER (L) (Ltr) P. COLLINS DENISE REG OPR FILE & REGION (2) MIPC	TECH REVIEW SCHROEDER MACCARY KNIGHT PAWLICKI SHAO STELLO HOUSTON NOVAK ROSS IPPOLITO FEDESCO J. COLLINS LAINAS BENAROYA VOLLMER	DENTON GRIMES GAMMILL KASTNER BALLARD SPANGLER ENVIRO MULLER DICKER KNIGHTON YOUNGBLOOD REGAN PROJECT LDR HARLESS	LIC ASST R. DIGGS (L) H. GEARIN (L) E. GOULBOURNE (L) P. KREUTZER (E) J. LEE (L) M. RUSHBROOK (L) S. REED (E) M. SERVICE (L) S. SHEPPARD (L) M. SLATER (E) H. SMITH (L) S. TEETS (L) G. WILLIAMS (E) W. WILSON (L) R. INGRAM (L) M. DUNCAN (E)	A/T IND. BRAITMAN SALTZMAN MELTZ PLANS MCDONALD CHAPMAN DUBE (Ltr) E. COUPE PETERSON HARTFIELD (2) KLECKER EISENHUT WIGGINTON <i>F. Williams</i> <i>HANAUER</i>
---	--	--	--	--

EXTERNAL DISTRIBUTION

1 - LOCAL PDR Ft. Pierce, Fla	1 - NATIONAL LABS	1 - PDR-SAN/LA/NY
1 - TIC (ABERNATHY) (1)(2)(10)	1 - W. PENNINGTON, Rm E-201 GT	1 - BROOKHAVEN NAT LAB
1 - NSIC (BUCHANAN)	1 - CONSULTANTS	1 - G. ULRIKSON ORNL
1 - ASLB	NEWMARK/BLUME/AGBABIAN	
1 - Newton Anderson		

✓ 5 ACRS-1 SENT
to Lic Asst.

DLH

$\frac{1}{2}$ $\frac{1}{2}$

3. 4. 5.

188

3

1998, 1999, 2000, 2001, 2002, 2003, 2004, 2005, 2006, 2007, 2008, 2009, 2010, 2011, 2012, 2013, 2014, 2015, 2016, 2017, 2018, 2019, 2020, 2021, 2022, 2023, 2024, 2025, 2026, 2027, 2028, 2029, 2030, 2031, 2032, 2033, 2034, 2035, 2036, 2037, 2038, 2039, 2040, 2041, 2042, 2043, 2044, 2045, 2046, 2047, 2048, 2049, 2050, 2051, 2052, 2053, 2054, 2055, 2056, 2057, 2058, 2059, 2060, 2061, 2062, 2063, 2064, 2065, 2066, 2067, 2068, 2069, 2070, 2071, 2072, 2073, 2074, 2075, 2076, 2077, 2078, 2079, 2080, 2081, 2082, 2083, 2084, 2085, 2086, 2087, 2088, 2089, 2090, 2091, 2092, 2093, 2094, 2095, 2096, 2097, 2098, 2099, 2100, 2101, 2102, 2103, 2104, 2105, 2106, 2107, 2108, 2109, 2110, 2111, 2112, 2113, 2114, 2115, 2116, 2117, 2118, 2119, 2120, 2121, 2122, 2123, 2124, 2125, 2126, 2127, 2128, 2129, 2130, 2131, 2132, 2133, 2134, 2135, 2136, 2137, 2138, 2139, 2140, 2141, 2142, 2143, 2144, 2145, 2146, 2147, 2148, 2149, 2150, 2151, 2152, 2153, 2154, 2155, 2156, 2157, 2158, 2159, 2160, 2161, 2162, 2163, 2164, 2165, 2166, 2167, 2168, 2169, 2170, 2171, 2172, 2173, 2174, 2175, 2176, 2177, 2178, 2179, 2180, 2181, 2182, 2183, 2184, 2185, 2186, 2187, 2188, 2189, 2190, 2191, 2192, 2193, 2194, 2195, 2196, 2197, 2198, 2199, 2200, 2201, 2202, 2203, 2204, 2205, 2206, 2207, 2208, 2209, 2210, 2211, 2212, 2213, 2214, 2215, 2216, 2217, 2218, 2219, 2220, 2221, 2222, 2223, 2224, 2225, 2226, 2227, 2228, 2229, 2230, 2231, 2232, 2233, 2234, 2235, 2236, 2237, 2238, 2239, 2240, 2241, 2242, 2243, 2244, 2245, 2246, 2247, 2248, 2249, 2250, 2251, 2252, 2253, 2254, 2255, 2256, 2257, 2258, 2259, 2260, 2261, 2262, 2263, 2264, 2265, 2266, 2267, 2268, 2269, 2270, 2271, 2272, 2273, 2274, 2275, 2276, 2277, 2278, 2279, 2280, 2281, 2282, 2283, 2284, 2285, 2286, 2287, 2288, 2289, 2290, 2291, 2292, 2293, 2294, 2295, 2296, 2297, 2298, 2299, 2300, 2301, 2302, 2303, 2304, 2305, 2306, 2307, 2308, 2309, 2310, 2311, 2312, 2313, 2314, 2315, 2316, 2317, 2318, 2319, 2320, 2321, 2322, 2323, 2324, 2325, 2326, 2327, 2328, 2329, 2330, 2331, 2332, 2333, 2334, 2335, 2336, 2337, 2338, 2339, 2340, 2341, 2342, 2343, 2344, 2345, 2346, 2347, 2348, 2349, 2350, 2351, 2352, 2353, 2354, 2355, 2356, 2357, 2358, 2359, 2360, 2361, 2362, 2363, 2364, 2365, 2366, 2367, 2368, 2369, 2370, 2371, 2372, 2373, 2374, 2375, 2376, 2377, 2378, 2379, 2380, 2381, 2382, 2383, 2384, 2385, 2386, 2387, 2388, 2389, 2390, 2391, 2392, 2393, 2394, 2395, 2396, 2397, 2398, 2399, 2400, 2401, 2402, 2403, 2404, 2405, 2406, 2407, 2408, 2409, 2410, 2411, 2412, 2413, 2414, 2415, 2416, 2417, 2418, 2419, 2420, 2421, 2422, 2423, 2424, 2425, 2426, 2427, 2428, 2429, 2430, 2431, 2432, 2433, 2434, 2435, 2436, 2437, 2438, 2439, 2440, 2441, 2442, 2443, 2444, 2445, 2446, 2447, 2448, 2449, 2450, 2451, 2452, 2453, 2454, 2455, 2456, 2457, 2458, 2459, 2460, 2461, 2462, 2463, 2464, 2465, 2466, 2467, 2468, 2469, 2470, 2471, 2472, 2473, 2474, 2475, 2476, 2477, 2478, 2479, 2480, 2481, 2482, 2483, 2484, 2485, 2486, 2487, 2488, 2489, 2490, 2491, 2492, 2493, 2494, 2495, 2496, 2497, 2498, 2499, 2500, 2501, 2502, 2503, 2504, 2505, 2506, 2507, 2508, 2509, 2510, 2511, 2512, 2513, 2514, 2515, 2516, 2517, 2518, 2519, 2520, 2521, 2522, 2523, 2524, 2525, 2526, 2527, 2528, 2529, 2530, 2531, 2532, 2533, 2534, 2535, 2536, 2537, 2538, 2539, 2540, 2541, 2542, 2543, 2544, 2545, 2546, 2547, 2548, 2549, 2550, 2551, 2552, 2553, 2554, 2555, 2556, 2557, 2558, 2559, 2560, 2561, 2562, 2563, 2564, 2565, 2566, 2567, 2568, 2569, 2570, 2571, 2572, 2573, 2574, 2575, 2576, 2577, 2578, 2579, 2580, 2581, 2582, 2583, 2584, 2585, 2586, 2587, 2588, 2589, 2590, 2591, 2592, 2593, 2594, 2595, 2596, 2597, 2598, 2599, 2600, 2601, 2602, 2603, 2604, 2605, 2606, 2607, 2608, 2609, 2610, 2611, 2612, 2613, 2614, 2615, 2616, 2617, 2618, 2619, 2620, 2621, 2622, 2623, 2624, 2625, 2626, 2627, 2628, 2629, 2630, 2631, 2632, 2633, 2634, 2635, 2636, 2637, 2638, 2639, 2640, 2641, 2642, 2643, 2644, 2645, 2646, 2647, 2648, 2649, 2650, 2651, 2652, 2653, 2654, 2655, 2656, 2657, 2658, 2659, 2660, 2661, 2662, 2663, 2664, 2665, 2666, 2667, 2668, 2669, 2670, 2671, 2672, 2673, 2674, 2675, 2676, 2677, 2678, 2679, 26

100

1

.....

•



August 5, 1975
L-75-388

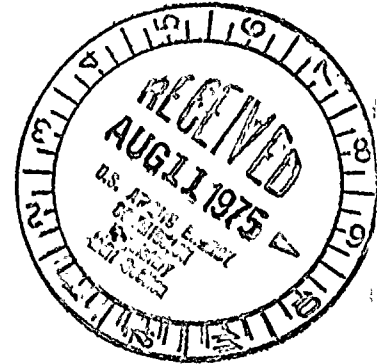
Regulatory

File by:

Mr. Donald F. Knuth, Director
Office of Inspection and Enforcement
U. S. Nuclear Regulatory Commission
Washington, D. C. 20555

Dear Mr. Knuth:

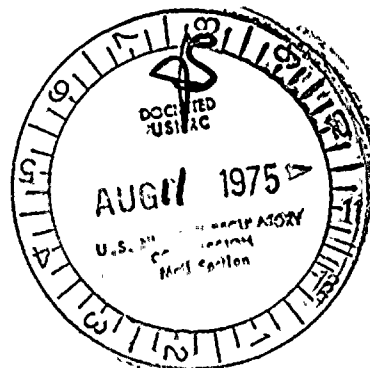
Re: Construction Incident Report (Final)
Steam Generator 1B1 Primary Head Clad,
St. Lucie Unit No. 1 Docket No. 50-335



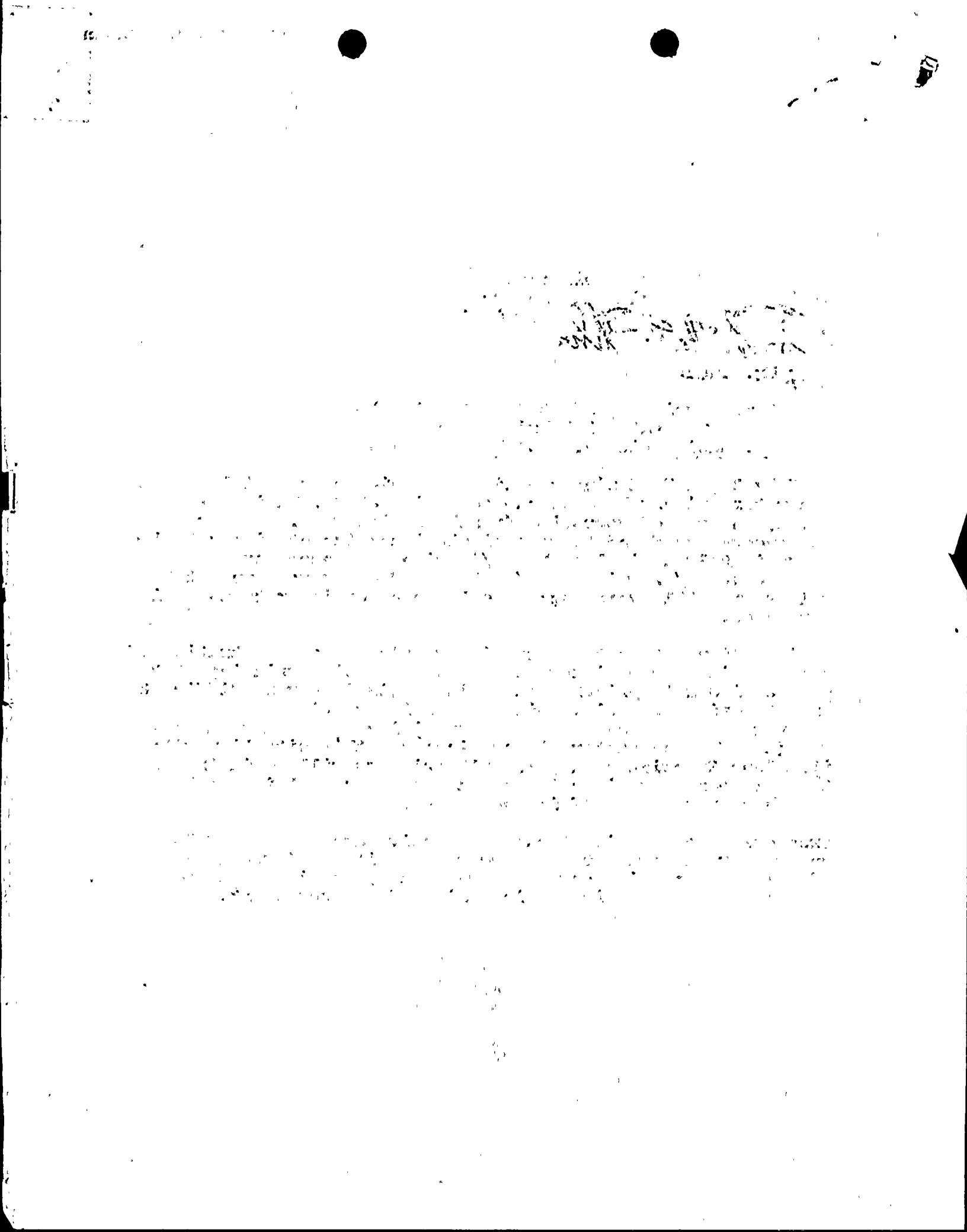
On July 23, 1975 during the final cleaning of the "1B1" steam generator primary head on the cold side at St. Lucie Unit No. 1, an area of corrosion (rust) was detected. The area of concern was found to be a single intermittent line totaling approximately 2" in length x 1/8" wide. A second area of concern was 3/32" wide by 3/4" long. These were found at the weld seam 6-111F which attaches the stay cylinder to the primary head.

It is believed that the corrosion resulted from penetration of the cladding caused inadvertently by excessive grinding at the stay cylinder-to-primary head weld. This is a very difficult area to grind properly. With proper instructions and care, however, the area can be ground sufficiently and accurately. C-E (the NSS Manufacturer) has discussed this situation with its Plant Superintendent, and all grinders will be instructed to apply more care in this area to assure that this problem does not present itself in the future.

Procedures for repair of these defective areas were developed and repair was conducted in accordance with ASME Code Case 1401-1. The repairs have been completed, and in no way do they reduce the quality or integrity of the component.



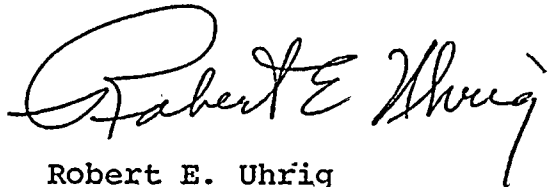
8494



Mr. Donald F. Knuth
August 5, 1975
Page 2

This is a final report submitted in accordance with 10 CFR
50.55 (e).

Yours very truly,

A handwritten signature in cursive script, reading "Robert E. Uhrig". The signature is written in dark ink and is positioned above the printed name and title.

Robert E. Uhrig
Vice President

REU:tq

cc: Jack R. Newman, Esquire
Mr. Norman C. Moseley



11-11-11

11-11-11

11-11-11

11-11-11

11-11-11

11-11-11

11-11-11

11-11-11

11-11-11

11-11-11

11-11-11