

# Geometry Composer Report

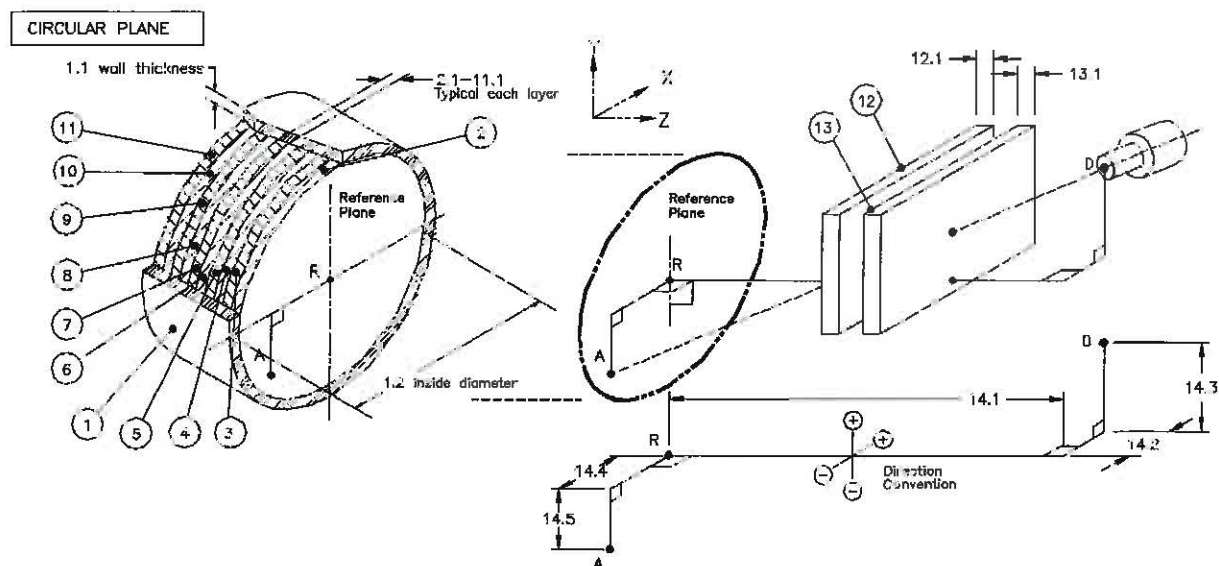
**Date:** Thursday, October 26, 2017 - 09:47:16  
**Description:** CRIBHOUSE 3M  
**Comment:** CRIBHOUSE 3M  
**File Name:** C:\GENIE2K\isocs\data\GEOMETRY\In-Situ\CIRCULAR\_PLANE\CRIBHOUSE 3M.geo  
**Software:** ISOCS  
**Template:** CIRCULAR\_PLANE, Version: (default)  
**Detector:** 5456  
**Collimator:** 50mm-90d new (newISOCS 50mm side 90deg collimation [large hole collimator])  
**Environment:** Temperature = 22 °C, Pressure = 760 mm Hg, Relative Humidity = 30%  
**Integration:** Convergence = 1.00%, MDRPN = 2<sup>4</sup> (16), CRPN = 2<sup>4</sup> (16)

**Dimensions (m)**

No.	Description	d.1	d.2	d.3	d.4	d.5	d.6	Material	Density	Rel. Conc.
1	Side Walls	0	6					none		
2	Layer 1	0.0127						concrete	2.3	1.00
3	Layer 2	0						<none>		
4	Layer 3	0						<none>		
5	Layer 4	0						<none>		
6	Layer 5	0						<none>		
7	Layer 6	0						<none>		
8	Layer 7	0						<none>		
9	Layer 8	0						<none>		
10	Layer 9	0						<none>		
11	Layer 10	0						<none>		
12	Absorber1									
13	Absorber2									
14	Source-Detector	3	0	0	0	0				

**List of energies for efficiency curve generation**

59.5	63.3	88.0	122.1	143.8	165.9	185.7	238.6
351.9	391.7	583.2	661.7	898.0	911.6	1001.0	1173.2
1332.5	1460.7	1764.5	1836.1				



# Geometry Composer Report

**Date:** Thursday, October 26, 2017 - 09:47:16  
**Description:** CRIBHOUSE 3M  
**Comment:** CRIBHOUSE 3M  
**File Name:** C:\GENIE2K\isocs\data\GEOMETRY\In-Situ\CIRCULAR\_PLANE\CRIBHOUSE 3M.geo  
**Software:** ISOCS  
**Template:** CIRCULAR\_PLANE, Version: (default)

