

NOTES
 DELETED WELD 1
 ADDED WELOS 11-THRU-15
 ADDED PC 10-THRU-13

REV A NOTE:
 INCORP REDLINE
 DELETE FW 18
 ADD FW 20

REV A NOTE:
 DELETE WELD 23, 14, 10, 11, 12, 13, 14, 15, 16, 17, 18, 19, 20, 21, 22, 23, 24, 25, 26, 27, 28, 29, 30, 31, 32, 33, 34, 35, 36, 37, 38, 39, 40, 41, 42, 43, 44, 45, 46, 47, 48, 49, 50, 51, 52, 53, 54, 55, 56, 57, 58, 59, 60, 61, 62, 63, 64, 65, 66, 67, 68, 69, 70, 71, 72, 73, 74, 75, 76, 77, 78, 79, 80, 81, 82, 83, 84, 85, 86, 87, 88, 89, 90, 91, 92, 93, 94, 95, 96, 97, 98, 99, 100, 101, 102, 103, 104, 105, 106, 107, 108, 109, 110, 111, 112, 113, 114, 115, 116, 117, 118, 119, 120, 121, 122, 123, 124, 125, 126, 127, 128, 129, 130, 131, 132, 133, 134, 135, 136, 137, 138, 139, 140, 141, 142, 143, 144, 145, 146, 147, 148, 149, 150, 151, 152, 153, 154, 155, 156, 157, 158, 159, 160, 161, 162, 163, 164, 165, 166, 167, 168, 169, 170, 171, 172, 173, 174, 175, 176, 177, 178, 179, 180, 181, 182, 183, 184, 185, 186, 187, 188, 189, 190, 191, 192, 193, 194, 195, 196, 197, 198, 199, 200, 201, 202, 203, 204, 205, 206, 207, 208, 209, 210, 211, 212, 213, 214, 215, 216, 217, 218, 219, 220, 221, 222, 223, 224, 225, 226, 227, 228, 229, 230, 231, 232, 233, 234, 235, 236, 237, 238, 239, 240, 241, 242, 243, 244, 245, 246, 247, 248, 249, 250, 251, 252, 253, 254, 255, 256, 257, 258, 259, 260, 261, 262, 263, 264, 265, 266, 267, 268, 269, 270, 271, 272, 273, 274, 275, 276, 277, 278, 279, 280, 281, 282, 283, 284, 285, 286, 287, 288, 289, 290, 291, 292, 293, 294, 295, 296, 297, 298, 299, 300, 301, 302, 303, 304, 305, 306, 307, 308, 309, 310, 311, 312, 313, 314, 315, 316, 317, 318, 319, 320, 321, 322, 323, 324, 325, 326, 327, 328, 329, 330, 331, 332, 333, 334, 335, 336, 337, 338, 339, 340, 341, 342, 343, 344, 345, 346, 347, 348, 349, 350, 351, 352, 353, 354, 355, 356, 357, 358, 359, 360, 361, 362, 363, 364, 365, 366, 367, 368, 369, 370, 371, 372, 373, 374, 375, 376, 377, 378, 379, 380, 381, 382, 383, 384, 385, 386, 387, 388, 389, 390, 391, 392, 393, 394, 395, 396, 397, 398, 399, 400, 401, 402, 403, 404, 405, 406, 407, 408, 409, 410, 411, 412, 413, 414, 415, 416, 417, 418, 419, 420, 421, 422, 423, 424, 425, 426, 427, 428, 429, 430, 431, 432, 433, 434, 435, 436, 437, 438, 439, 440, 441, 442, 443, 444, 445, 446, 447, 448, 449, 450, 451, 452, 453, 454, 455, 456, 457, 458, 459, 460, 461, 462, 463, 464, 465, 466, 467, 468, 469, 470, 471, 472, 473, 474, 475, 476, 477, 478, 479, 480, 481, 482, 483, 484, 485, 486, 487, 488, 489, 490, 491, 492, 493, 494, 495, 496, 497, 498, 499, 500, 501, 502, 503, 504, 505, 506, 507, 508, 509, 510, 511, 512, 513, 514, 515, 516, 517, 518, 519, 520, 521, 522, 523, 524, 525, 526, 527, 528, 529, 530, 531, 532, 533, 534, 535, 536, 537, 538, 539, 540, 541, 542, 543, 544, 545, 546, 547, 548, 549, 550, 551, 552, 553, 554, 555, 556, 557, 558, 559, 560, 561, 562, 563, 564, 565, 566, 567, 568, 569, 570, 571, 572, 573, 574, 575, 576, 577, 578, 579, 580, 581, 582, 583, 584, 585, 586, 587, 588, 589, 590, 591, 592, 593, 594, 595, 596, 597, 598, 599, 600, 601, 602, 603, 604, 605, 606, 607, 608, 609, 610, 611, 612, 613, 614, 615, 616, 617, 618, 619, 620, 621, 622, 623, 624, 625, 626, 627, 628, 629, 630, 631, 632, 633, 634, 635, 636, 637, 638, 639, 640, 641, 642, 643, 644, 645, 646, 647, 648, 649, 650, 651, 652, 653, 654, 655, 656, 657, 658, 659, 660, 661, 662, 663, 664, 665, 666, 667, 668, 669, 670, 671, 672, 673, 674, 675, 676, 677, 678, 679, 680, 681, 682, 683, 684, 685, 686, 687, 688, 689, 690, 691, 692, 693, 694, 695, 696, 697, 698, 699, 700, 701, 702, 703, 704, 705, 706, 707, 708, 709, 710, 711, 712, 713, 714, 715, 716, 717, 718, 719, 720, 721, 722, 723, 724, 725, 726, 727, 728, 729, 730, 731, 732, 733, 734, 735, 736, 737, 738, 739, 740, 741, 742, 743, 744, 745, 746, 747, 748, 749, 750, 751, 752, 753, 754, 755, 756, 757, 758, 759, 760, 761, 762, 763, 764, 765, 766, 767, 768, 769, 770, 771, 772, 773, 774, 775, 776, 777, 778, 779, 780, 781, 782, 783, 784, 785, 786, 787, 788, 789, 790, 791, 792, 793, 794, 795, 796, 797, 798, 799, 800, 801, 802, 803, 804, 805, 806, 807, 808, 809, 810, 811, 812, 813, 814, 815, 816, 817, 818, 819, 820, 821, 822, 823, 824, 825, 826, 827, 828, 829, 830, 831, 832, 833, 834, 835, 836, 837, 838, 839, 840, 841, 842, 843, 844, 845, 846, 847, 848, 849, 850, 851, 852, 853, 854, 855, 856, 857, 858, 859, 860, 861, 862, 863, 864, 865, 866, 867, 868, 869, 870, 871, 872, 873, 874, 875, 876, 877, 878, 879, 880, 881, 882, 883, 884, 885, 886, 887, 888, 889, 890, 891, 892, 893, 894, 895, 896, 897, 898, 899, 900, 901, 902, 903, 904, 905, 906, 907, 908, 909, 910, 911, 912, 913, 914, 915, 916, 917, 918, 919, 920, 921, 922, 923, 924, 925, 926, 927, 928, 929, 930, 931, 932, 933, 934, 935, 936, 937, 938, 939, 940, 941, 942, 943, 944, 945, 946, 947, 948, 949, 950, 951, 952, 953, 954, 955, 956, 957, 958, 959, 960, 961, 962, 963, 964, 965, 966, 967, 968, 969, 970, 971, 972, 973, 974, 975, 976, 977, 978, 979, 980, 981, 982, 983, 984, 985, 986, 987, 988, 989, 990, 991, 992, 993, 994, 995, 996, 997, 998, 999, 1000

REV A NOTES:
 CHANGE SV-157548 AND
 SV-157549 TO SV-157548 AND
 SV-157549 PER ENG 7180

STRESS ANALYSIS DATA									
MATERIAL	SA337-7P304	TEMP °F/PRESS, PSI	300/30	MOD OF ELAS, E, PSI	28.3E6	EXP. COEFF. MICRIN/IN	1.0	EXP. COEFF. IN/100 FT	1.31
LINE O.D. (IN)	1.315	LINE THICKNESS (IN)	.133	SK-M-5280					

NOTES:
 PROVIDE
 DIRECTIO

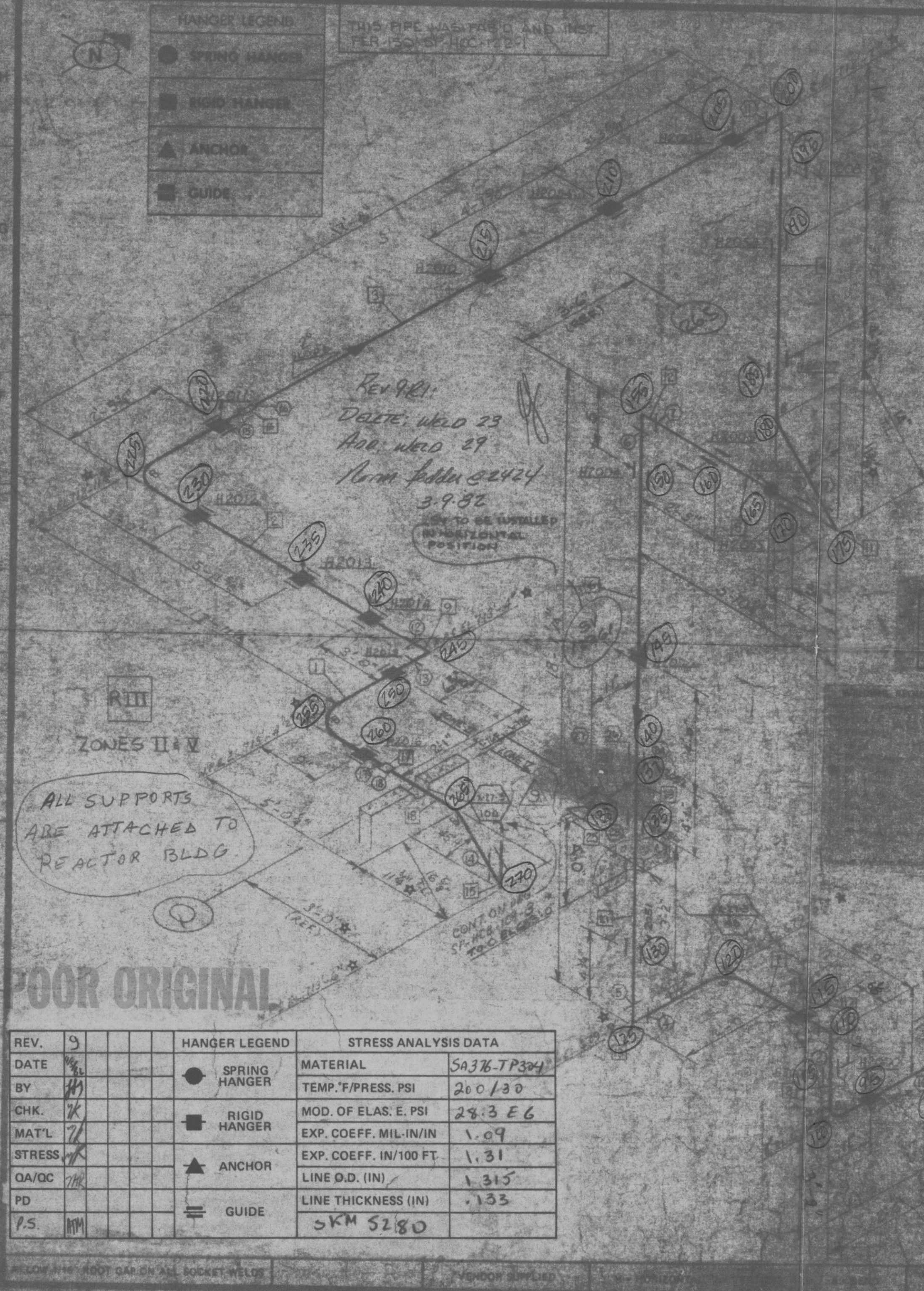
HANGER LEGEND	
●	SPRING HANGER
■	RIGID HANGER
▲	ANCHOR
≡	GUIDE





WELDING REQUIREMENTS	
<input type="checkbox"/> PL-A-C-15 <input type="checkbox"/> PL-AF-1A <input type="checkbox"/> PL-AF-2A <input type="checkbox"/> PL-AF-3A <input type="checkbox"/> PL-AF-4A <input type="checkbox"/> PL-AF-5A <input type="checkbox"/> PL-AF-6A <input type="checkbox"/> PL-AF-7A <input type="checkbox"/> PL-AF-8A <input type="checkbox"/> PL-AF-9A <input type="checkbox"/> PL-AF-10A <input type="checkbox"/> PL-AF-11A <input type="checkbox"/> PL-AF-12A <input type="checkbox"/> PL-AF-13A <input type="checkbox"/> PL-AF-14A <input type="checkbox"/> PL-AF-15A <input type="checkbox"/> PL-AF-16A <input type="checkbox"/> PL-AF-17A <input type="checkbox"/> PL-AF-18A <input type="checkbox"/> PL-AF-19A <input type="checkbox"/> PL-AF-20A <input type="checkbox"/> PL-AF-21A <input type="checkbox"/> PL-AF-22A <input type="checkbox"/> PL-AF-23A <input type="checkbox"/> PL-AF-24A <input type="checkbox"/> PL-AF-25A <input type="checkbox"/> PL-AF-26A <input type="checkbox"/> PL-AF-27A <input type="checkbox"/> PL-AF-28A <input type="checkbox"/> PL-AF-29A <input type="checkbox"/> PL-AF-30A <input type="checkbox"/> PL-AF-31A <input type="checkbox"/> PL-AF-32A <input type="checkbox"/> PL-AF-33A <input type="checkbox"/> PL-AF-34A <input type="checkbox"/> PL-AF-35A <input type="checkbox"/> PL-AF-36A <input type="checkbox"/> PL-AF-37A <input type="checkbox"/> PL-AF-38A <input type="checkbox"/> PL-AF-39A <input type="checkbox"/> PL-AF-40A <input type="checkbox"/> PL-AF-41A <input type="checkbox"/> PL-AF-42A <input type="checkbox"/> PL-AF-43A <input type="checkbox"/> PL-AF-44A <input type="checkbox"/> PL-AF-45A <input type="checkbox"/> PL-AF-46A <input type="checkbox"/> PL-AF-47A <input type="checkbox"/> PL-AF-48A <input type="checkbox"/> PL-AF-49A <input type="checkbox"/> PL-AF-50A <input type="checkbox"/> PL-AF-51A <input type="checkbox"/> PL-AF-52A <input type="checkbox"/> PL-AF-53A <input type="checkbox"/> PL-AF-54A <input type="checkbox"/> PL-AF-55A <input type="checkbox"/> PL-AF-56A <input type="checkbox"/> PL-AF-57A <input type="checkbox"/> PL-AF-58A <input type="checkbox"/> PL-AF-59A <input type="checkbox"/> PL-AF-60A <input type="checkbox"/> PL-AF-61A <input type="checkbox"/> PL-AF-62A <input type="checkbox"/> PL-AF-63A <input type="checkbox"/> PL-AF-64A <input type="checkbox"/> PL-AF-65A <input type="checkbox"/> PL-AF-66A <input type="checkbox"/> PL-AF-67A <input type="checkbox"/> PL-AF-68A <input type="checkbox"/> PL-AF-69A <input type="checkbox"/> PL-AF-70A <input type="checkbox"/> PL-AF-71A <input type="checkbox"/> PL-AF-72A <input type="checkbox"/> PL-AF-73A <input type="checkbox"/> PL-AF-74A <input type="checkbox"/> PL-AF-75A <input type="checkbox"/> PL-AF-76A <input type="checkbox"/> PL-AF-77A <input type="checkbox"/> PL-AF-78A <input type="checkbox"/> PL-AF-79A <input type="checkbox"/> PL-AF-80A <input type="checkbox"/> PL-AF-81A <input type="checkbox"/> PL-AF-82A <input type="checkbox"/> PL-AF-83A <input type="checkbox"/> PL-AF-84A <input type="checkbox"/> PL-AF-85A <input type="checkbox"/> PL-AF-86A <input type="checkbox"/> PL-AF-87A <input type="checkbox"/> PL-AF-88A <input type="checkbox"/> PL-AF-89A <input type="checkbox"/> PL-AF-90A <input type="checkbox"/> PL-AF-91A <input type="checkbox"/> PL-AF-92A <input type="checkbox"/> PL-AF-93A <input type="checkbox"/> PL-AF-94A <input type="checkbox"/> PL-AF-95A <input type="checkbox"/> PL-AF-96A <input type="checkbox"/> PL-AF-97A <input type="checkbox"/> PL-AF-98A <input type="checkbox"/> PL-AF-99A <input type="checkbox"/> PL-AF-100A	<input type="checkbox"/> E-705 <input type="checkbox"/> E-706 <input type="checkbox"/> E-707 <input type="checkbox"/> E-708 <input type="checkbox"/> E-709 <input type="checkbox"/> E-710 <input type="checkbox"/> E-711 <input type="checkbox"/> E-712 <input type="checkbox"/> E-713 <input type="checkbox"/> E-714 <input type="checkbox"/> E-715 <input type="checkbox"/> E-716 <input type="checkbox"/> E-717 <input type="checkbox"/> E-718 <input type="checkbox"/> E-719 <input type="checkbox"/> E-720 <input type="checkbox"/> E-721 <input type="checkbox"/> E-722 <input type="checkbox"/> E-723 <input type="checkbox"/> E-724 <input type="checkbox"/> E-725 <input type="checkbox"/> E-726 <input type="checkbox"/> E-727 <input type="checkbox"/> E-728 <input type="checkbox"/> E-729 <input type="checkbox"/> E-730 <input type="checkbox"/> E-731 <input type="checkbox"/> E-732 <input type="checkbox"/> E-733 <input type="checkbox"/> E-734 <input type="checkbox"/> E-735 <input type="checkbox"/> E-736 <input type="checkbox"/> E-737 <input type="checkbox"/> E-738 <input type="checkbox"/> E-739 <input type="checkbox"/> E-740 <input type="checkbox"/> E-741 <input type="checkbox"/> E-742 <input type="checkbox"/> E-743 <input type="checkbox"/> E-744 <input type="checkbox"/> E-745 <input type="checkbox"/> E-746 <input type="checkbox"/> E-747 <input type="checkbox"/> E-748 <input type="checkbox"/> E-749 <input type="checkbox"/> E-750 <input type="checkbox"/> E-751 <input type="checkbox"/> E-752 <input type="checkbox"/> E-753 <input type="checkbox"/> E-754 <input type="checkbox"/> E-755 <input type="checkbox"/> E-756 <input type="checkbox"/> E-757 <input type="checkbox"/> E-758 <input type="checkbox"/> E-759 <input type="checkbox"/> E-760 <input type="checkbox"/> E-761 <input type="checkbox"/> E-762 <input type="checkbox"/> E-763 <input type="checkbox"/> E-764 <input type="checkbox"/> E-765 <input type="checkbox"/> E-766 <input type="checkbox"/> E-767 <input type="checkbox"/> E-768 <input type="checkbox"/> E-769 <input type="checkbox"/> E-770 <input type="checkbox"/> E-771 <input type="checkbox"/> E-772 <input type="checkbox"/> E-773 <input type="checkbox"/> E-774 <input type="checkbox"/> E-775 <input type="checkbox"/> E-776 <input type="checkbox"/> E-777 <input type="checkbox"/> E-778 <input type="checkbox"/> E-779 <input type="checkbox"/> E-780 <input type="checkbox"/> E-781 <input type="checkbox"/> E-782 <input type="checkbox"/> E-783 <input type="checkbox"/> E-784 <input type="checkbox"/> E-785 <input type="checkbox"/> E-786 <input type="checkbox"/> E-787 <input type="checkbox"/> E-788 <input type="checkbox"/> E-789 <input type="checkbox"/> E-790 <input type="checkbox"/> E-791 <input type="checkbox"/> E-792 <input type="checkbox"/> E-793 <input type="checkbox"/> E-794 <input type="checkbox"/> E-795 <input type="checkbox"/> E-796 <input type="checkbox"/> E-797 <input type="checkbox"/> E-798 <input type="checkbox"/> E-799 <input type="checkbox"/> E-800

Sheet # 52-387
 Control # 5209200258
 Date 9/15/82 of Document
 REGULATORY DOCKET FILE

H2039 & H2041 ARE ATTACHED TO THE
 CONTAINMENT WALL
 H2040 IS ATTACHED TO
 THE REACTOR BLDG.

SIZE AND DESCRIPTION											
1	1" PIPE	SGH 403 SS SMLS	SA-316	1	1	1	1	1	1	1	1
1	1" TEE	3000" SW	SA-316	1	1	1	1	1	1	1	1
1	1" CMC			1	1	1	1	1	1	1	1
1	1" ECA-GB										7
1	1" SV-15734A										821
1	1" SV-15734A										9
2	1" PIPE	SGH 403 SS SMLS	SA-316	2	2	2	2	2	2	2	11
1	1" 45-ELL	3000" SW	SA-316	1	1	1	1	1	1	1	12
1	1" T			1	1	1	1	1	1	1	13
2	1" PIPE	SGH 403 SS SMLS	SA-316	2	2	2	2	2	2	2	15
1	1" PIPE	SGH 403 SS SMLS	SA-316	1	1	1	1	1	1	1	16
1	1" T			1	1	1	1	1	1	1	17
1	1" T			1	1	1	1	1	1	1	18
1	1" ECA-GB										19
1	1" ECA-GB										20
NON-Q HCB MAT'L											
1	1" PIPE	SGH 403 SS SMLS	SA-316	1	1	1	1	1	1	1	21
1	1" CAP	3000" SS THRU'D SMLS	SA-316	1	1	1	1	1	1	1	22
RADIOACTIVE											
NUCLEAR CLANG 2											
SEMIMIC CLANG 2											
HANGER CRITICAL											



REV.	9				HANGER LEGEND	STRESS ANALYSIS DATA	
DATE	4/24/81				 SPRING HANGER	MATERIAL	SA376-TP304
BY	HM					TEMP. °F/PRESS. PSI	200/30
CHK.	JK				 RIGID HANGER	MOD. OF ELAS. E. PSI	28.3 E6
MAT'L	JK					EXP. COEFF. MIL-IN/IN	1.09
STRESS	JK				 ANCHOR	EXP. COEFF. IN/100 FT	1.31
QA/QC	THK					LINE O.D. (IN)	1.315
PD					 GUIDE	LINE THICKNESS (IN)	.133
P.S.	MM					5KM 5280	

BELOW 1/16" ROOT GAP ON ALL SOCKET WELDS

VENDOR SUPPLIED

ASME AS MINT
N-5 PACKING PREPARED
ALL CHANGES MUST BE APPROVED BY
THE DESIGNER MUST BE APPROVED BY
CODE DATA ENGINEER
ASME N-5 SYSTEM 1-13

Docket # 50-387
Control # 82-1200-228
Date 9/3/82 of Document:
REGULATORY DOCKET FILE

REV. 2 NOTES:
DELETE WELDS 21 & 22
ADD WELD 23

QTY	SIZE AND DESCRIPTION	ASMP	PR
5'	" PIPE SCH 40S 55 SMLS	WGT	168
10'	" "		
10'	" "		
15'	" "		
10' 0"	" "		
10'	" "		
5'	" "		
1'	" "		
1'	" 90 ELV 3000"	WGT	187
1'	" "		
1'	" "		
1'	" "		
1'	" "		
1'	" "		
1'	" "		
1'	" "		
1'	" "		
1'	" CPLG		
1'	" "		
1'	" "		
5'	" PIPE SCH 40S 55 SMLS	WGT	168
3'	" "		
1'	" 90 ELV 3000"	WGT	187
3'	" PIPE SCH 40S 55 SMLS	WGT	168
1'	" "		
1'	" TEE STD WGT & W	WGT	168
1'	" CV-125C		
1'	" 1/2" TUBING ADAPTER	WGT	516

NUCLEAR CL 2
SEISMIC CL 1
RADIOACTIVE
HGR. CRITICAL

~~_____~~
~~_____~~
~~_____~~
~~_____~~

MATERIAL	TRACEABILITY	REQUIREMENT
----------	--------------	-------------

QUALITY CONTROL DATA

O-D DOCUMENTATION		SEARCH ANALYSIS	
REQ'D	NOT REQ'D	REQ'D	NOT REQ'D
SHOP TAB		FIELD TAB	
START OF NG		COST CODE	INSTR. CL.
1. TAC		5534	F
PLAN		PLAN DESIGN DWG	
M-157.5N1		SP-27-3	
UNIT	ELEV	AREA	
	683-0		27

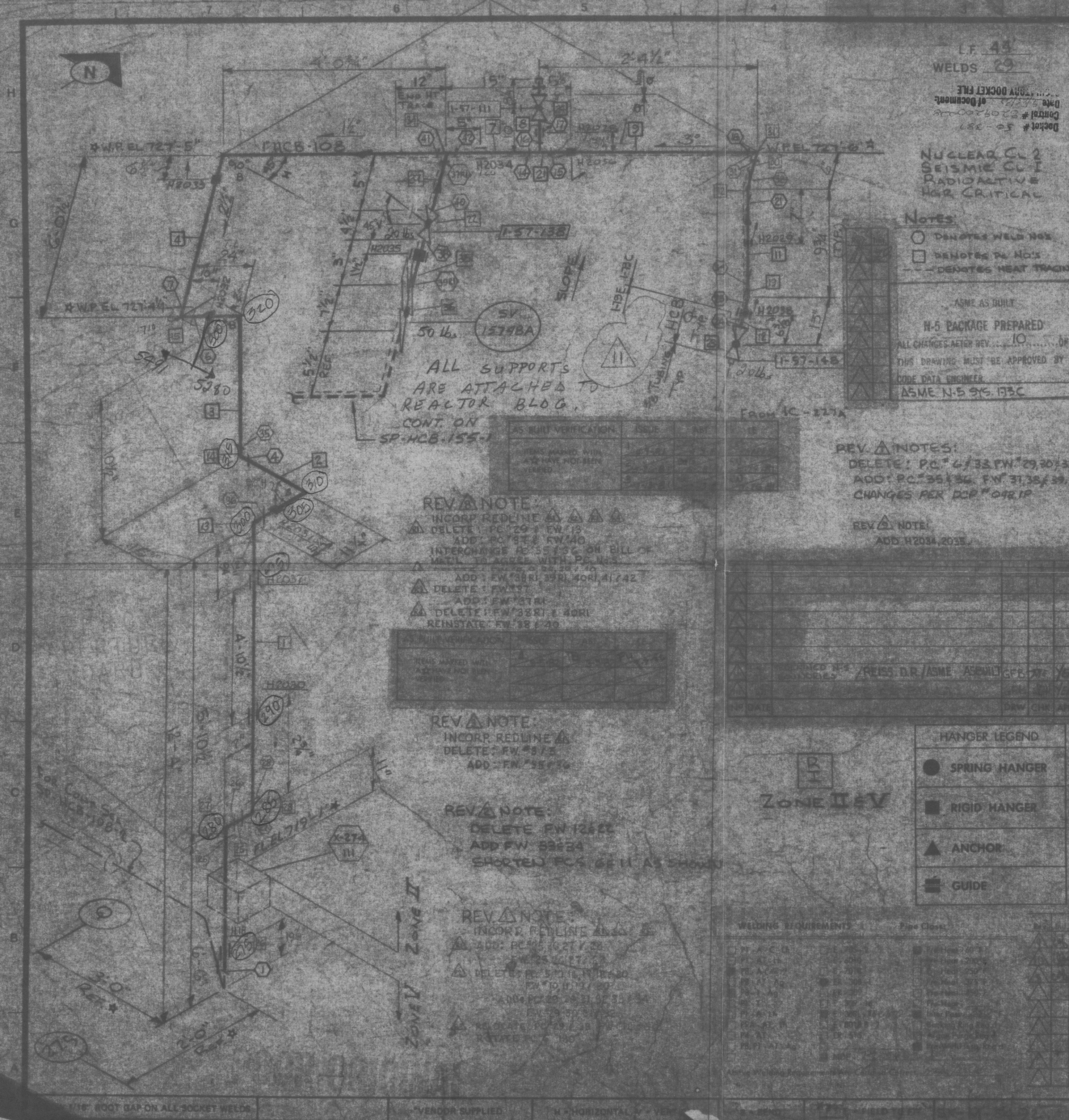
1	1	SEE REV. NOTE/REISSUE AS BUILT	6.0	77	Y
2	2	ASME AS BUILT	6.0	78	Y
3	3	CHG DIMS./REISSUE D.R. AS BUILT	7.0	79	Y
4	4	CHG DIMS./REISSUE D.R. AS BUILT	7.0	80	Y
5	5	SEE REV. NOTE/REISSUE CONST.	7.0	81	Y
6	6	SEE REV. NOTE/REISSUE CONST.	7.0	82	Y
7	7	ISSUE DR. AS BUILT	7.0	83	Y
8	8	SEE REV. NOTE/REISSUE CONST.	7.0	84	Y
9	9	ISSUE FOR CONST.	7.0	85	Y

BECHTEL POWER CORPORATION
BERWICK, PENNSYLVANIA / SAN FRANCISCO, CALIFORNIA

PENNSYLVANIA POWER & LIGHT COMPANY
ALLENTOWN, PENNSYLVANIA
SUBSIDIARY OF THE PENNSYLVANIA POWER & LIGHT COMPANY, UNIT 1, UNDER

8209200258-01

This drawing and the design it covers are the property of BECHTEL. They are loaned and on the borrower's express agreement that they will not be reproduced, copied, loaned, exhibited, nor used except in the limited way and for the limited purpose for which they are loaned.



LF 43
WELDS 29
DOCKET FILE
Date 7/2/81
Control # 50-381
Docket # 50-381

NUCLEAR CL 2
SEISMIC CL 1
RADIOACTIVE
HGR CRITICAL

NOTES:
○ DENOTES WELD NOS.
□ DENOTES P/NOS.
--- DENOTES HEAT TRACING

ASME AS BUILT
N-5 PACKAGE PREPARED
ALL CHANGES AFTER REV. 10 OR
THIS DRAWING MUST BE APPROVED BY
CODE DATA ENGINEER
ASME N-5 95.173C

REV. A NOTES:
DELETE: PC 4/33 FW 29, 30, 33
ADD: PC 35, 36, FW 31, 38, 39
CHANGES PER DCP 0481P

REV. A NOTE:
ADD H2034, 2035

REV. A NOTE:
INCORP. REDLINE
DELETE: PC 29, FW 13
ADD: PC 35, FW 40
INTERCHANGE RE 55, 56 ON BILL OF
MATERIAL TO AGREE WITH PC NOS.
ADD: FW 38RI, 39RI, 40RI, 41, 42
DELETE: FW 37
ADD: FW 37RI
DELETE: FW 38RI, 40RI
REINSTATE: FW 38, 40

REV. A NOTE:
INCORP. REDLINE
DELETE: FW 8/3
ADD: FW 35, 36

REV. A NOTE:
DELETE FW 12, 13
ADD FW 33, 34
SHORTEN FCS 62 II AS SHOWN

REV. A NOTE:
INCORP. REDLINE
ADD: PC 45, 46, 47, 48
DELETE: PC 49, 50, 51, 52
ADD: PC 53, 54, 55, 56, 57, 58
DELETE: PC 59, 60, 61, 62
REINSTATE: PC 63, 64, 65, 66
REINSTATE: PC 67, 68, 69, 70

REISSUED BY: REISS. D.R./ASME, ASME/CL 2, 95.173C, 95.173D, 95.173E, 95.173F, 95.173G, 95.173H, 95.173I, 95.173J, 95.173K, 95.173L, 95.173M, 95.173N, 95.173O, 95.173P, 95.173Q, 95.173R, 95.173S, 95.173T, 95.173U, 95.173V, 95.173W, 95.173X, 95.173Y, 95.173Z, 95.173AA, 95.173AB, 95.173AC, 95.173AD, 95.173AE, 95.173AF, 95.173AG, 95.173AH, 95.173AI, 95.173AJ, 95.173AK, 95.173AL, 95.173AM, 95.173AN, 95.173AO, 95.173AP, 95.173AQ, 95.173AR, 95.173AS, 95.173AT, 95.173AU, 95.173AV, 95.173AW, 95.173AX, 95.173AY, 95.173AZ, 95.173BA, 95.173BB, 95.173BC, 95.173BD, 95.173BE, 95.173BF, 95.173BG, 95.173BH, 95.173BI, 95.173BJ, 95.173BK, 95.173BL, 95.173BM, 95.173BN, 95.173BO, 95.173BP, 95.173BQ, 95.173BR, 95.173BS, 95.173BT, 95.173BU, 95.173BV, 95.173BW, 95.173BX, 95.173BY, 95.173BZ, 95.173CA, 95.173CB, 95.173CC, 95.173CD, 95.173CE, 95.173CF, 95.173CG, 95.173CH, 95.173CI, 95.173CJ, 95.173CK, 95.173CL, 95.173CM, 95.173CN, 95.173CO, 95.173CP, 95.173CQ, 95.173CR, 95.173CS, 95.173CT, 95.173CU, 95.173CV, 95.173CW, 95.173CX, 95.173CY, 95.173CZ, 95.173DA, 95.173DB, 95.173DC, 95.173DD, 95.173DE, 95.173DF, 95.173DG, 95.173DH, 95.173DI, 95.173DJ, 95.173DK, 95.173DL, 95.173DM, 95.173DN, 95.173DO, 95.173DP, 95.173DQ, 95.173DR, 95.173DS, 95.173DT, 95.173DU, 95.173DV, 95.173DW, 95.173DX, 95.173DY, 95.173DZ, 95.173EA, 95.173EB, 95.173EC, 95.173ED, 95.173EE, 95.173EF, 95.173EG, 95.173EH, 95.173EI, 95.173EJ, 95.173EK, 95.173EL, 95.173EM, 95.173EN, 95.173EO, 95.173EP, 95.173EQ, 95.173ER, 95.173ES, 95.173ET, 95.173EU, 95.173EV, 95.173EW, 95.173EX, 95.173EY, 95.173EZ, 95.173FA, 95.173FB, 95.173FC, 95.173FD, 95.173FE, 95.173FF, 95.173FG, 95.173FH, 95.173FI, 95.173FJ, 95.173FK, 95.173FL, 95.173FM, 95.173FN, 95.173FO, 95.173FP, 95.173FQ, 95.173FR, 95.173FS, 95.173FT, 95.173FU, 95.173FV, 95.173FW, 95.173FX, 95.173FY, 95.173FZ, 95.173GA, 95.173GB, 95.173GC, 95.173GD, 95.173GE, 95.173GF, 95.173GG, 95.173GH, 95.173GI, 95.173GJ, 95.173GK, 95.173GL, 95.173GM, 95.173GN, 95.173GO, 95.173GP, 95.173GQ, 95.173GR, 95.173GS, 95.173GT, 95.173GU, 95.173GV, 95.173GW, 95.173GX, 95.173GY, 95.173GZ, 95.173HA, 95.173HB, 95.173HC, 95.173HD, 95.173HE, 95.173HF, 95.173HG, 95.173HH, 95.173HI, 95.173HJ, 95.173HK, 95.173HL, 95.173HM, 95.173HN, 95.173HO, 95.173HP, 95.173HQ, 95.173HR, 95.173HS, 95.173HT, 95.173HU, 95.173HV, 95.173HW, 95.173HX, 95.173HY, 95.173HZ, 95.173IA, 95.173IB, 95.173IC, 95.173ID, 95.173IE, 95.173IF, 95.173IG, 95.173IH, 95.173II, 95.173IJ, 95.173IK, 95.173IL, 95.173IM, 95.173IN, 95.173IO, 95.173IP, 95.173IQ, 95.173IR, 95.173IS, 95.173IT, 95.173IU, 95.173IV, 95.173IW, 95.173IX, 95.173IY, 95.173IZ, 95.173JA, 95.173JB, 95.173JC, 95.173JD, 95.173JE, 95.173JF, 95.173JG, 95.173JH, 95.173JI, 95.173JJ, 95.173JK, 95.173JL, 95.173JM, 95.173JN, 95.173JO, 95.173JP, 95.173JQ, 95.173JR, 95.173JS, 95.173JT, 95.173JU, 95.173JV, 95.173JW, 95.173JX, 95.173JY, 95.173JZ, 95.173KA, 95.173KB, 95.173KC, 95.173KD, 95.173KE, 95.173KF, 95.173KG, 95.173KH, 95.173KI, 95.173KJ, 95.173KK, 95.173KL, 95.173KM, 95.173KN, 95.173KO, 95.173KP, 95.173KQ, 95.173KR, 95.173KS, 95.173KT, 95.173KU, 95.173KV, 95.173KW, 95.173KX, 95.173KY, 95.173KZ, 95.173LA, 95.173LB, 95.173LC, 95.173LD, 95.173LE, 95.173LF, 95.173LG, 95.173LH, 95.173LI, 95.173LJ, 95.173LK, 95.173LL, 95.173LM, 95.173LN, 95.173LO, 95.173LP, 95.173LQ, 95.173LR, 95.173LS, 95.173LT, 95.173LU, 95.173LV, 95.173LW, 95.173LX, 95.173LY, 95.173LZ, 95.173MA, 95.173MB, 95.173MC, 95.173MD, 95.173ME, 95.173MF, 95.173MG, 95.173MH, 95.173MI, 95.173MJ, 95.173MK, 95.173ML, 95.173MN, 95.173MO, 95.173MP, 95.173MQ, 95.173MR, 95.173MS, 95.173MT, 95.173MU, 95.173MV, 95.173MW, 95.173MX, 95.173MY, 95.173MZ, 95.173NA, 95.173NB, 95.173NC, 95.173ND, 95.173NE, 95.173NF, 95.173NG, 95.173NH, 95.173NI, 95.173NJ, 95.173NK, 95.173NL, 95.173NM, 95.173NN, 95.173NO, 95.173NP, 95.173NQ, 95.173NR, 95.173NS, 95.173NT, 95.173NU, 95.173NV, 95.173NW, 95.173NX, 95.173NY, 95.173NZ, 95.173OA, 95.173OB, 95.173OC, 95.173OD, 95.173OE, 95.173OF, 95.173OG, 95.173OH, 95.173OI, 95.173OJ, 95.173OK, 95.173OL, 95.173OM, 95.173ON, 95.173OO, 95.173OP, 95.173OQ, 95.173OR, 95.173OS, 95.173OT, 95.173OU, 95.173OV, 95.173OW, 95.173OX, 95.173OY, 95.173OZ, 95.173PA, 95.173PB, 95.173PC, 95.173PD, 95.173PE, 95.173PF, 95.173PG, 95.173PH, 95.173PI, 95.173PJ, 95.173PK, 95.173PL, 95.173PM, 95.173PN, 95.173PO, 95.173PP, 95.173PQ, 95.173PR, 95.173PS, 95.173PT, 95.173PU, 95.173PV, 95.173PW, 95.173PX, 95.173PY, 95.173PZ, 95.173QA, 95.173QB, 95.173QC, 95.173QD, 95.173QE, 95.173QF, 95.173QG, 95.173QH, 95.173QI, 95.173QJ, 95.173QK, 95.173QL, 95.173QM, 95.173QN, 95.173QO, 95.173QP, 95.173QQ, 95.173QR, 95.173QS, 95.173QT, 95.173QU, 95.173QV, 95.173QW, 95.173QX, 95.173QY, 95.173QZ, 95.173RA, 95.173RB, 95.173RC, 95.173RD, 95.173RE, 95.173RF, 95.173RG, 95.173RH, 95.173RI, 95.173RJ, 95.173RK, 95.173RL, 95.173RM, 95.173RN, 95.173RO, 95.173RP, 95.173RQ, 95.173RR, 95.173RS, 95.173RT, 95.173RU, 95.173RV, 95.173RW, 95.173RX, 95.173RY, 95.173RZ, 95.173SA, 95.173SB, 95.173SC, 95.173SD, 95.173SE, 95.173SF, 95.173SG, 95.173SH, 95.173SI, 95.173SJ, 95.173SK, 95.173SL, 95.173SM, 95.173SN, 95.173SO, 95.173SP, 95.173SQ, 95.173SR, 95.173SS, 95.173ST, 95.173SU, 95.173SV, 95.173SW, 95.173SX, 95.173SY, 95.173SZ, 95.173TA, 95.173TB, 95.173TC, 95.173TD, 95.173TE, 95.173TF, 95.173TG, 95.173TH, 95.173TI, 95.173TJ, 95.173TK, 95.173TL, 95.173TM, 95.173TN, 95.173TO, 95.173TP, 95.173TQ, 95.173TR, 95.173TS, 95.173TT, 95.173TU, 95.173TV, 95.173TW, 95.173TX, 95.173TY, 95.173TZ, 95.173UA, 95.173UB, 95.173UC, 95.173UD, 95.173UE, 95.173UF, 95.173UG, 95.173UH, 95.173UI, 95.173UJ, 95.173UK, 95.173UL, 95.173UM, 95.173UN, 95.173UO, 95.173UP, 95.173UQ, 95.173UR, 95.173US, 95.173UT, 95.173UU, 95.173UV, 95.173UW, 95.173UX, 95.173UY, 95.173UZ, 95.173VA, 95.173VB, 95.173VC, 95.173VD, 95.173VE, 95.173VF, 95.173VG, 95.173VH, 95.173VI, 95.173VJ, 95.173VK, 95.173VL, 95.173VM, 95.173VN, 95.173VO, 95.173VP, 95.173VQ, 95.173VR, 95.173VS, 95.173VT, 95.173VU, 95.173VV, 95.173VW, 95.173VX, 95.173VY, 95.173VZ, 95.173WA, 95.173WB, 95.173WC, 95.173WD, 95.173WE, 95.173WF, 95.173WG, 95.173WH, 95.173WI, 95.173WJ, 95.173WK, 95.173WL, 95.173WM, 95.173WN, 95.173WO, 95.173WP, 95.173WQ, 95.173WR, 95.173WS, 95.173WT, 95.173WU, 95.173WV, 95.173WW, 95.173WX, 95.173WY, 95.173WZ, 95.173XA, 95.173XB, 95.173XC, 95.173XD, 95.173XE, 95.173XF, 95.173XG, 95.173XH, 95.173XI, 95.173XJ, 95.173XK, 95.173XL, 95.173XM, 95.173XN, 95.173XO, 95.173XP, 95.173XQ, 95.173XR, 95.173XS, 95.173XT, 95.173XU, 95.173XV, 95.173XW, 95.173XX, 95.173XY, 95.173XZ, 95.173YA, 95.173YB, 95.173YC, 95.173YD, 95.173YE, 95.173YF, 95.173YG, 95.173YH, 95.173YI, 95.173YJ, 95.173YK, 95.173YL, 95.173YM, 95.173YN, 95.173YO, 95.173YP, 95.173YQ, 95.173YR, 95.173YS, 95.173YT, 95.173YU, 95.173YV, 95.173YW, 95.173YX, 95.173YY, 95.173YZ, 95.173ZA, 95.173ZB, 95.173ZC, 95.173ZD, 95.173ZE, 95.173ZF, 95.173ZG, 95.173ZH, 95.173ZI, 95.173ZJ, 95.173ZK, 95.173ZL, 95.173ZM, 95.173ZN, 95.173ZO, 95.173ZP, 95.173ZQ, 95.173ZR, 95.173ZS, 95.173ZT, 95.173ZU, 95.173ZV, 95.173ZW, 95.173ZX, 95.173ZY, 95.173ZZ

HANGER LEGEND
● SPRING HANGER
■ RIGID HANGER
▲ ANCHOR
□ GUIDE

WELDING REQUIREMENTS
Pipe Class:
Welding Process:
Welding Material:
Welding Temperature:
Welding Time:
Welding Location:
Welding Operator:
Welding Inspector:

BILL OF MATERIAL									
QTY.	SIZE AND DESCRIPTION	AS BUILT	REVISION	REVISION	REVISION	REVISION	REVISION	REVISION	REVISION
1	PIPE 40" SS 304								
2	PIPE 40" SS 304								
3	PIPE 40" SS 304								
4	PIPE 40" SS 304								
5	PIPE 40" SS 304								
6	PIPE 40" SS 304								
7	PIPE 40" SS 304								
8	PIPE 40" SS 304								
9	PIPE 40" SS 304								
10	PIPE 40" SS 304								
11	PIPE 40" SS 304								
12	PIPE 40" SS 304								
13	PIPE 40" SS 304								
14	PIPE 40" SS 304								
15	PIPE 40" SS 304								
16	PIPE 40" SS 304								
17	PIPE 40" SS 304								
18	PIPE 40" SS 304								
19	PIPE 40" SS 304								
20	PIPE 40" SS 304								
21	PIPE 40" SS 304								
22	PIPE 40" SS 304								
23	PIPE 40" SS 304								
24	PIPE 40" SS 304								
25	PIPE 40" SS 304								
26	PIPE 40" SS 304								
27	PIPE 40" SS 304								
28	PIPE 40" SS 304								
29	PIPE 40" SS 304								
30	PIPE 40" SS 304								
31	PIPE 40" SS 304								
32	PIPE 40" SS 304								
33	PIPE 40" SS 304								
34	PIPE 40" SS 304								
35	PIPE 40" SS 304								
36	PIPE 40" SS 304								
37	PIPE 40" SS 304								
38	PIPE 40" SS 304								
39	PIPE 40" SS 304								
40	PIPE 40" SS 304								
41	PIPE 40" SS 304								
42	PIPE 40" SS 304								
43	PIPE 40" SS 304								
44	PIPE 40" SS 304								
45	PIPE 40" SS 304								
46	PIPE 40" SS 304								
47	PIPE 40" SS 304								
48	PIPE 40" SS 304								
49	PIPE 40" SS 304								
50	PIPE 40" SS 304								
51	PIPE 40" SS 304								
52	PIPE 40" SS 304								
53	PIPE 40" SS 304								
54	PIPE 40" SS 304								
55	PIPE 40" SS 304								
56	PIPE 40" SS 304								
57	PIPE 40" SS 304								
58	PIPE 40" SS 304								
59	PIPE 40" SS 304								
60	PIPE 40" SS 304								
61	PIPE 40" SS 304								
62	PIPE 40" SS 304								
63	PIPE 40" SS 304								
64	PIPE 40" SS 304								
65	PIPE 40" SS 304								
66	PIPE 40" SS 304								
67	PIPE 40" SS 304								
68	PIPE 40" SS 304								
69	PIPE 40" SS 304								
70	PIPE 40" SS 304								
71	PIPE 40" SS 304								
72	PIPE 40" SS 304								
73	PIPE 40" SS 304								
74	PIPE 40" SS 304								
75	PIPE 40" SS 304								
76	PIPE 40" SS 304								
77	PIPE 40" SS 304								
78	PIPE 40" SS 304								
79	PIPE 40" SS 304								
80	PIPE 40" SS 304								
81	PIPE 40" SS 304								
82	PIPE 40" SS 304								
83	PIPE 40" SS 304								
84	PIPE 40" SS 304								
85	PIPE 40" SS 304								
86	PIPE 40" SS 304								
87	PIPE 40" SS 304								
88	PIPE 40" SS 304								
89	PIPE 40" SS 304								
90	PIPE 40" SS 304								
91	PIPE 40" SS 304								
92	PIPE 40" SS 304								
93	PIPE 40" SS 304								
94	PIPE 40" SS 304								
95	PIPE 40" SS 304								
96	PIPE 40" SS 304								
97	PIPE 40" SS 304								
98	PIPE 40" SS 304								
99	PIPE 40" SS 304								
100	PIPE 40" SS 304								

STRESS ANALYSIS DATA									
MATERIAL	TEMP °F	PRESS. PSI	MOD. OF ELAST. PSI	EXP. COEFF. MILL-IN/IN	EXP. COEFF. IN/100 FT	LINE O.D. (IN)	LINE THICKNESS (IN)		
SA 304	593.6		28.5 x 10 ⁶	1.217	1.216	13.5	0.135		