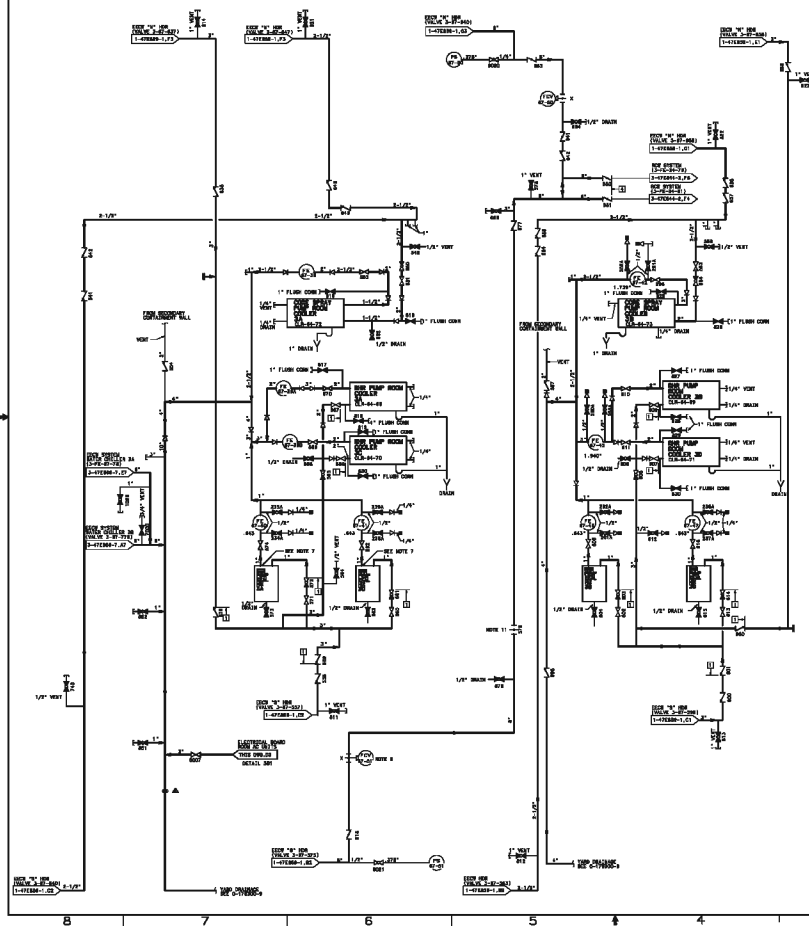


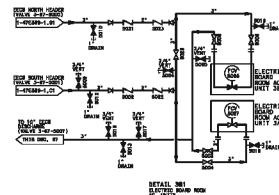
1404 1-609349-C M 17



- NOTES:
1. ALL SYSTEMS SHALL BE DESIGNED TO OPERATE AT 150°F.
 2. ALL SYSTEMS SHALL BE DESIGNED TO OPERATE AT 150°F.
 3. ALL SYSTEMS SHALL BE DESIGNED TO OPERATE AT 150°F.
 4. ALL SYSTEMS SHALL BE DESIGNED TO OPERATE AT 150°F.
 5. ALL SYSTEMS SHALL BE DESIGNED TO OPERATE AT 150°F.
 6. ALL SYSTEMS SHALL BE DESIGNED TO OPERATE AT 150°F.
 7. ALL SYSTEMS SHALL BE DESIGNED TO OPERATE AT 150°F.
 8. ALL SYSTEMS SHALL BE DESIGNED TO OPERATE AT 150°F.
 9. ALL SYSTEMS SHALL BE DESIGNED TO OPERATE AT 150°F.
 10. ALL SYSTEMS SHALL BE DESIGNED TO OPERATE AT 150°F.
 11. ALL SYSTEMS SHALL BE DESIGNED TO OPERATE AT 150°F.

REFERENCE SYMBOLS:

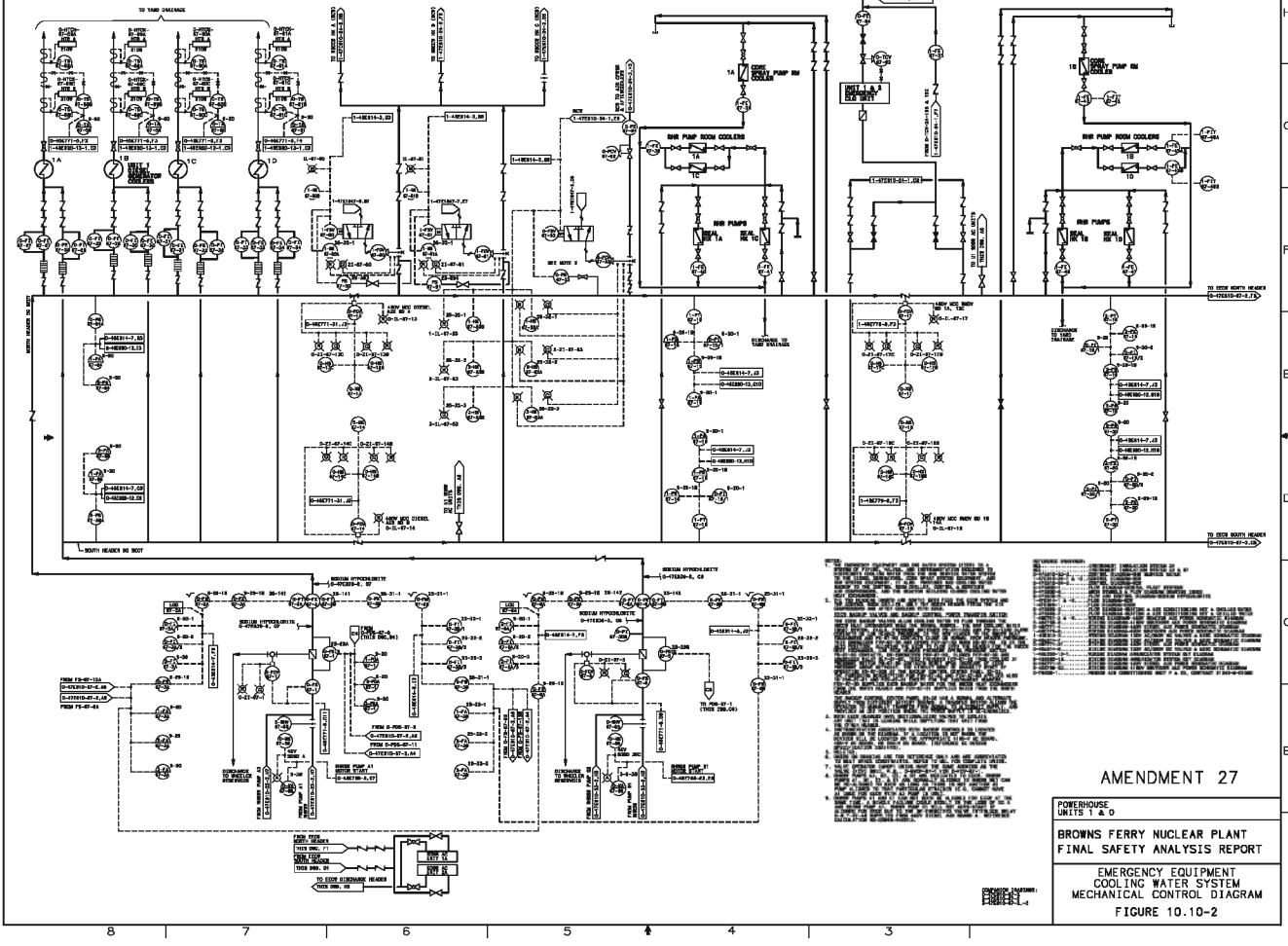
SYMBOL	DESCRIPTION
[Symbol]	1\"/>

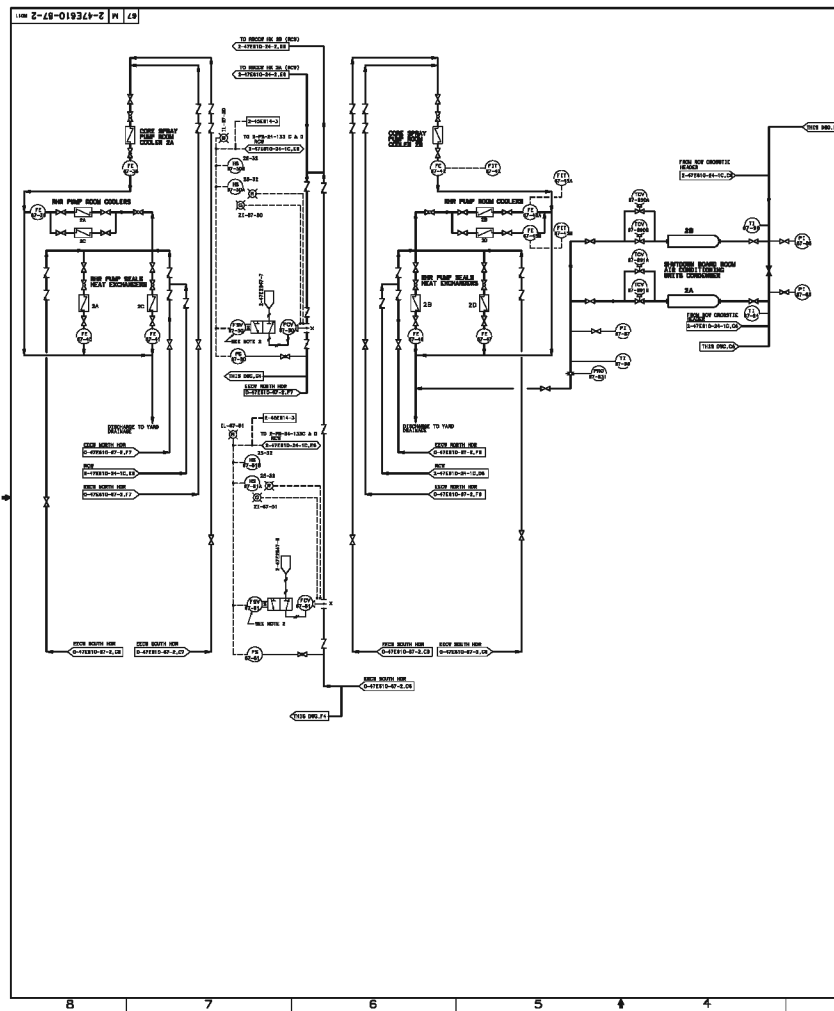


AMENDMENT 27

POWERHOUSE UNIT 3
BROWNS FERRY NUCLEAR PLANT FINAL SAFETY ANALYSIS REPORT
EMERGENCY EQUIPMENT COOLING WATER FLOW DIAGRAM
FIGURE 10.10-1d

SYNCH 1-29-01934-1 M 28



[illegible]

AMENDMENT 27

POWERHOUSE
UNIT 2

BROWNS FERRY NUCLEAR PLANT
FINAL SAFETY ANALYSIS REPORT

EMERGENCY EQUIPMENT
COOLING WATER SYSTEM
MECHANICAL CONTROL DIAGRAM
FIGURE 10.10-3 SH 2

COMPANION ENGINEER: 0-477610-67-4
1-37511-12-1

BFN-16

Figure 10.10-4

Deleted by Amendment 10

BFN-22

Figures 10.10-4a and 10.10-4b
(Deleted by Amendment 22)

|