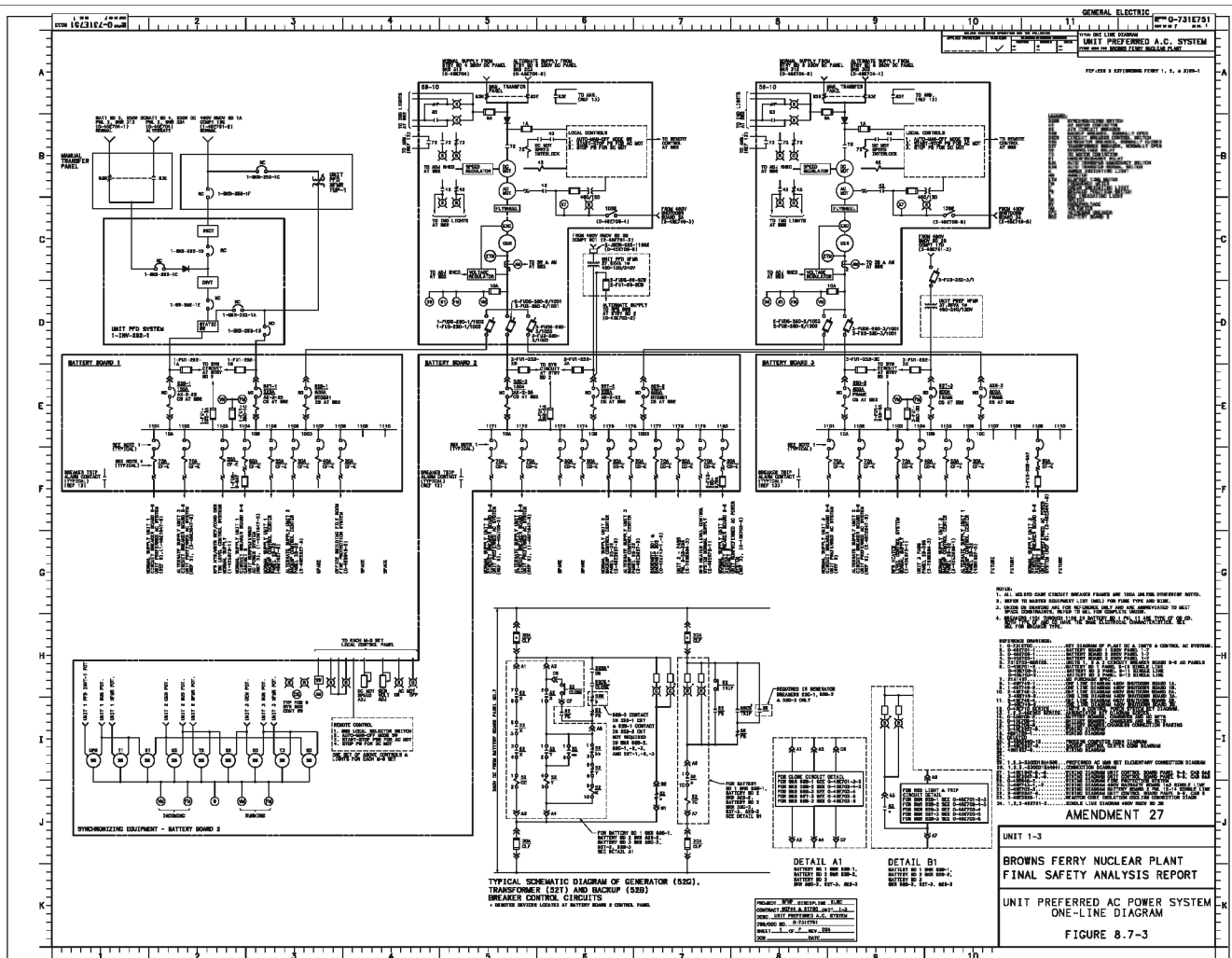


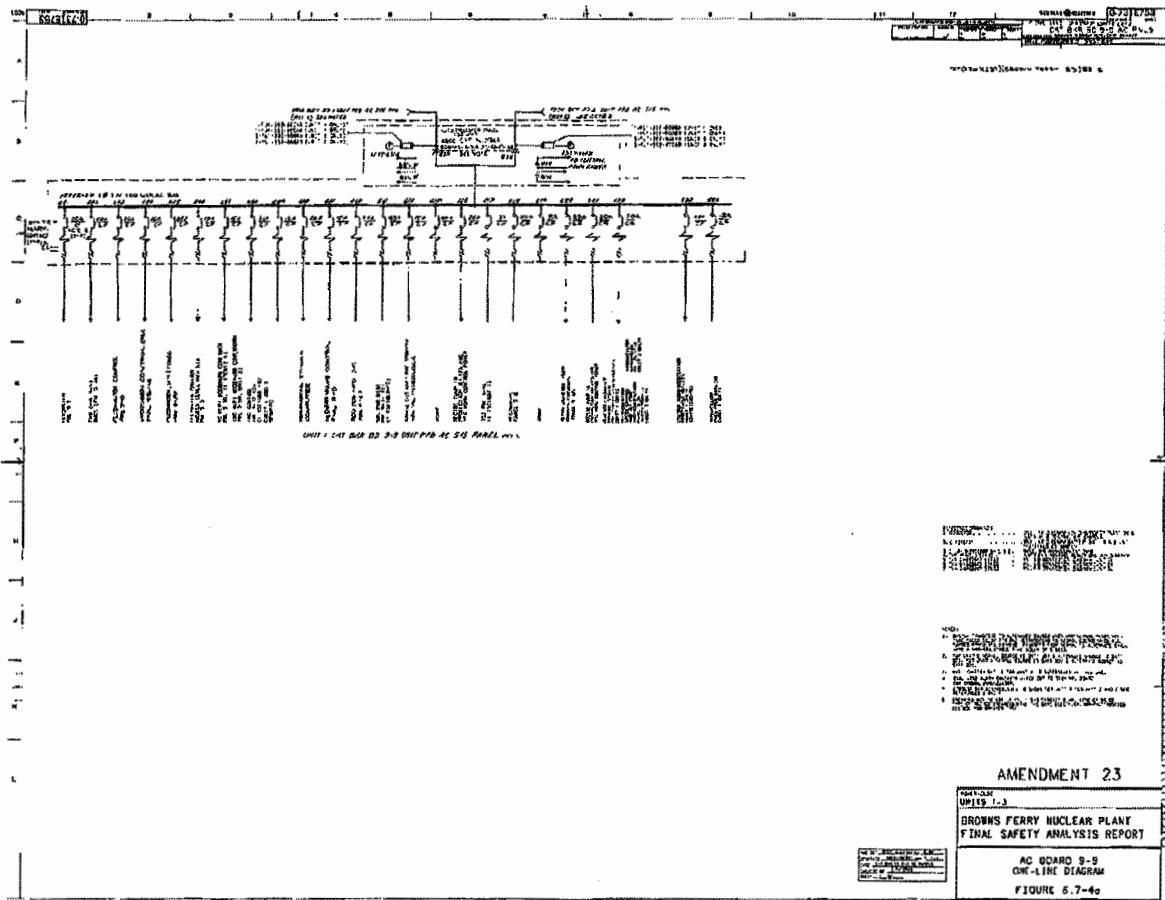


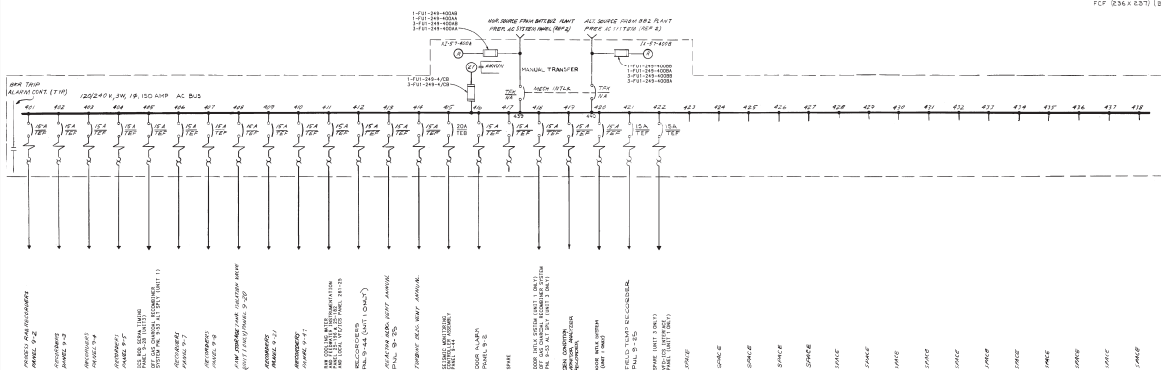
BFN-16

Figure 8.7-2

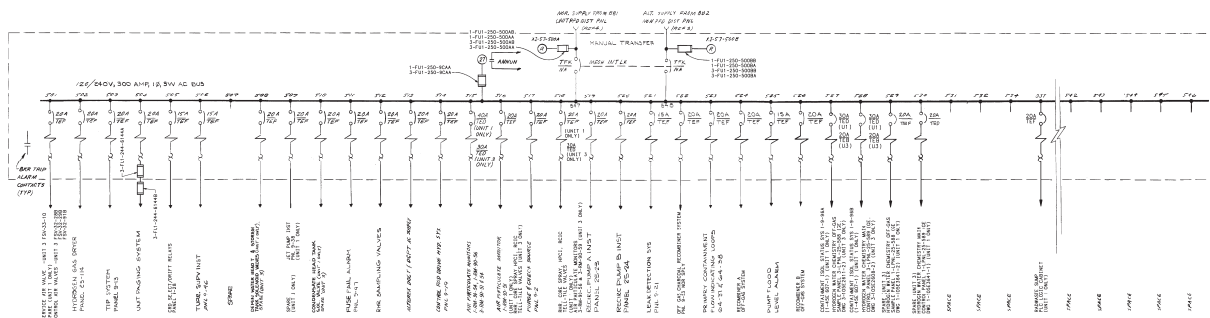
Deleted by Amendment 9.







UNIT 1 PANEL 7-2 PLANT PREFERRED AS SYSTEM PANEL



UNIT 1 PANEL 9-9 UNIT NON-PREFERRED AC SYSTEM PANEL

NOTES:

1. PANELS FOR UNIT 3 ARE THE SAME AS UNIT 1 EXCEPT AS NOTED.
2. DELETED
3. BWR TRIP ALARM CONTACTS WIRED OUT TO TERMINAL BLOCKS FOR COMMON APPLIC.
4. CIRCUIT BREAKER DISTRIBUTION IS SHOWN FOR UNIT 1. FOR DIFFERENCES IN UNIT 3, SEE 3-ASC3447 SERIES DGRS.
5. UNITS ON SHAKING ARE FOR REFERENCE ONLY AND ARE ABANDONED TO MEET SPACE CONSTRAINTS. REFER TO MEL FOR COMPLETE UNITS.

REFERENCE DRAWINGS:

- 1. 0-7312700-----ONE LINE DIAG. KEY DIAG OF PLANT  
DC INST & CONTROL AC SYSTEM
- 2. 0-7312756-1-----ONE LINE DIAG. BATT DC PLANT PREF  
AND NONPREF SYSTEM PLS
- 1. 1-3-7512207-1-----PANEL 9-9 APPENDMENT DIAG  
1-3-7512207-2
- 2. 0-7312751-1-----ONE LINE DIAG. UNIT PREF AC PWR SYS
- 0-456710 SERIES-----INST & CONTROL PWR SYS. KEY DIAGRAM
- 1-4-561847 SERIES-----PWR. 9-9 CORN DIAG INST & 4  
3-963847 SERIES
- 2-7312752-2-----UNIT 2 PNL 9-9 SINGLE LINE

AMENDMENT 25

UNITS 1 & 3

BROWNS FERRY NUCLEAR PLANT  
FINAL SAFETY ANALYSIS REPORT

AC BOARD 9-9  
PREFERRED AND NONPREFERRED LOADS

ONE-LINE DIAGRAM

FIGURE 8.7-4b SH 1

PROJECT	BRP	DISCIPLINE	ELEC
CONTRACT	93744, 91750	UNIT	1 & 2
DESC.	CKT BRK BD 0-9 AC PWS		
INSTR/REV	0-3216753		
SHEET	2	OF	REV Q10

