



AMENDMENT 27

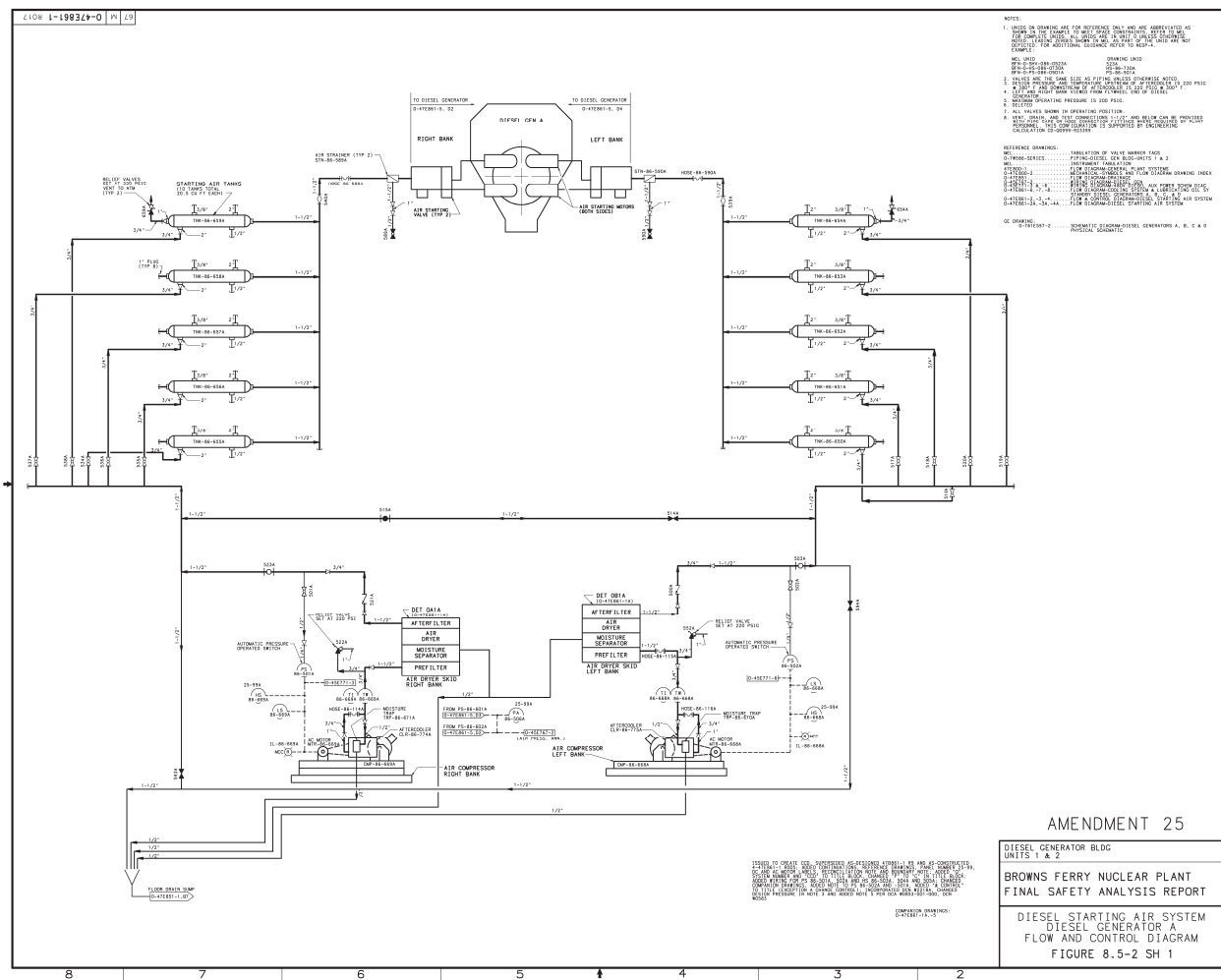
DIESEL GENERATOR BUILDING
UNIT 1-3

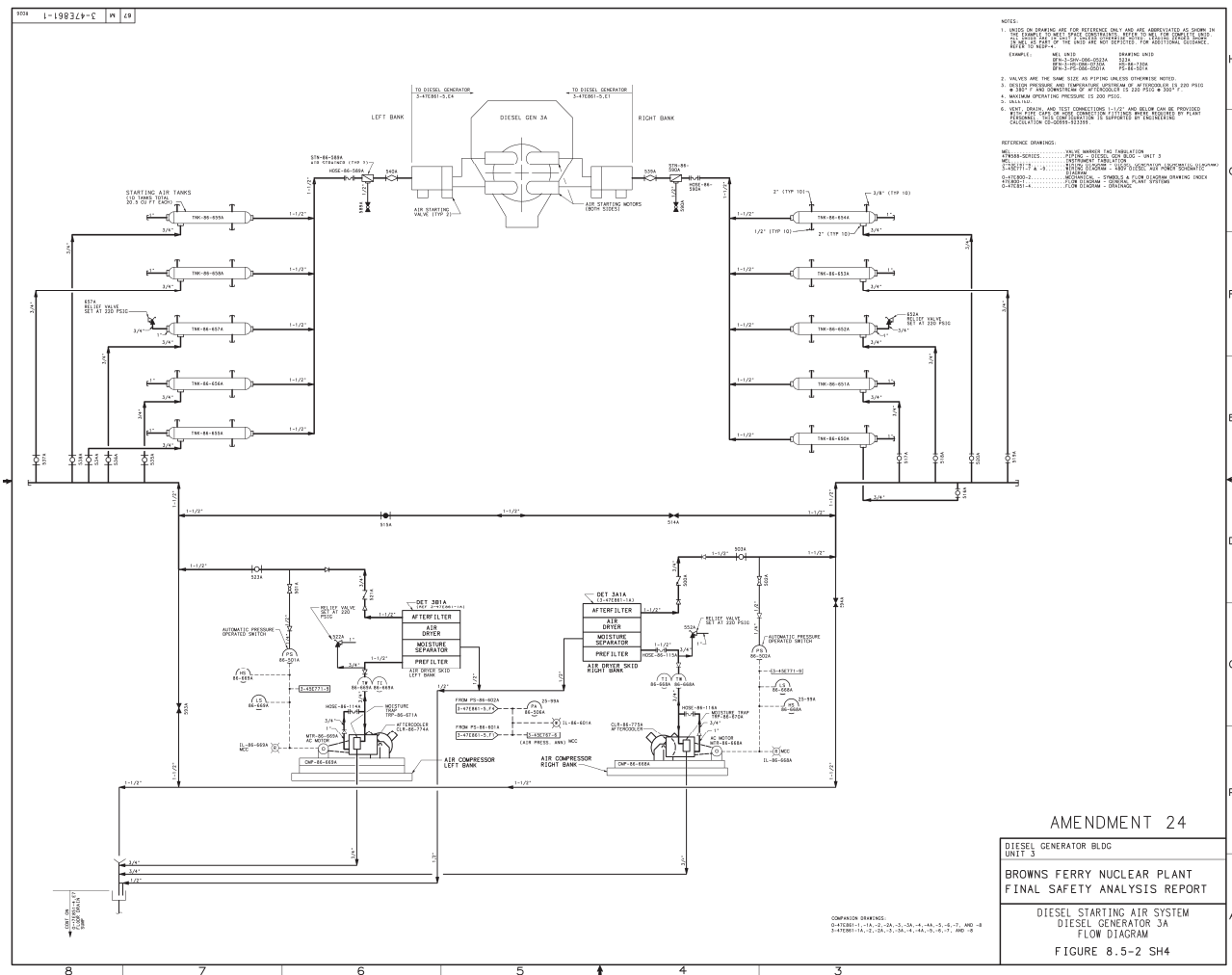
BROWNS FERRY NUCLEAR PLANT
FINAL SAFETY ANALYSIS REPORT

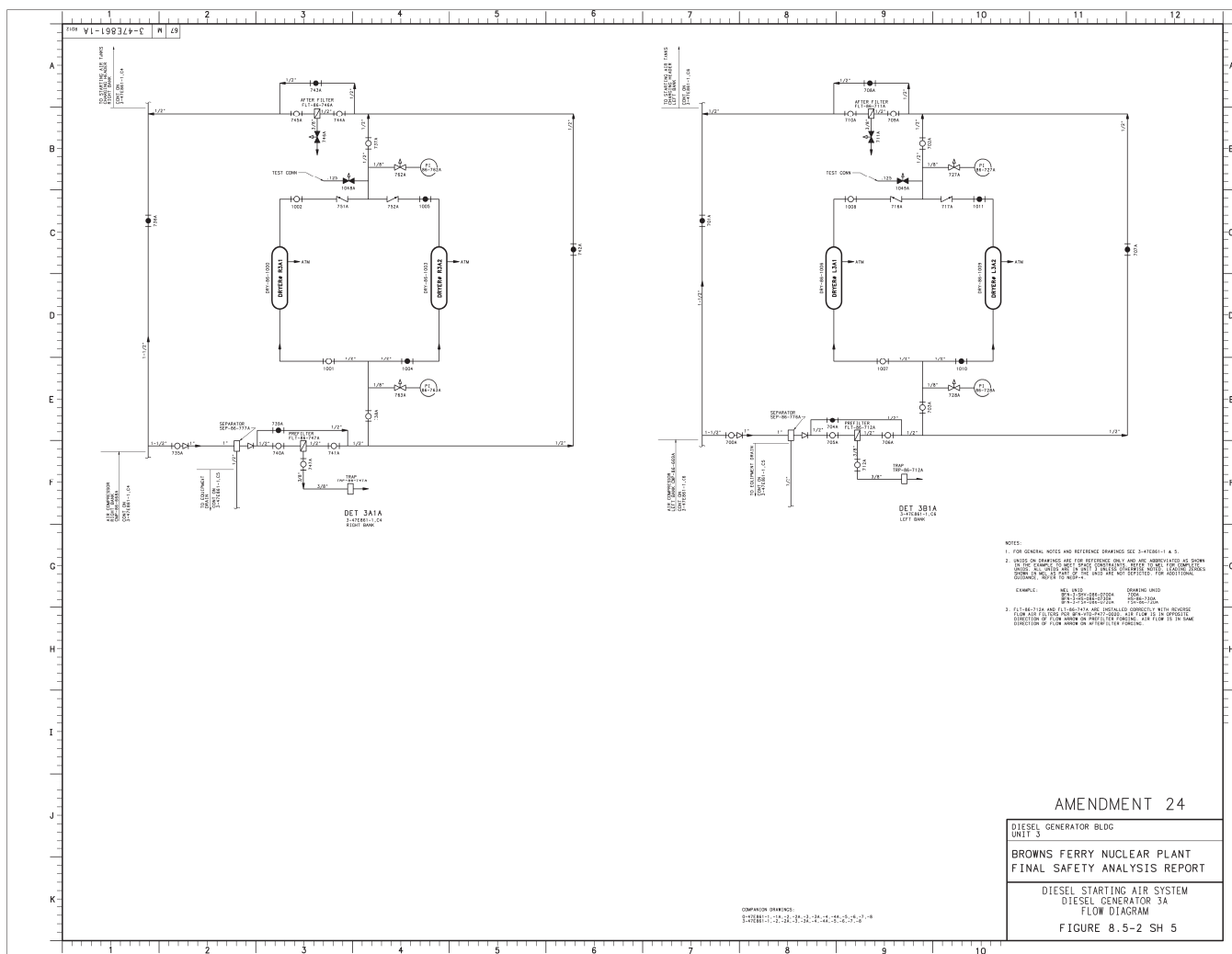
DIESEL GENERATOR PANEL
ONE-LINE DIAGRAM

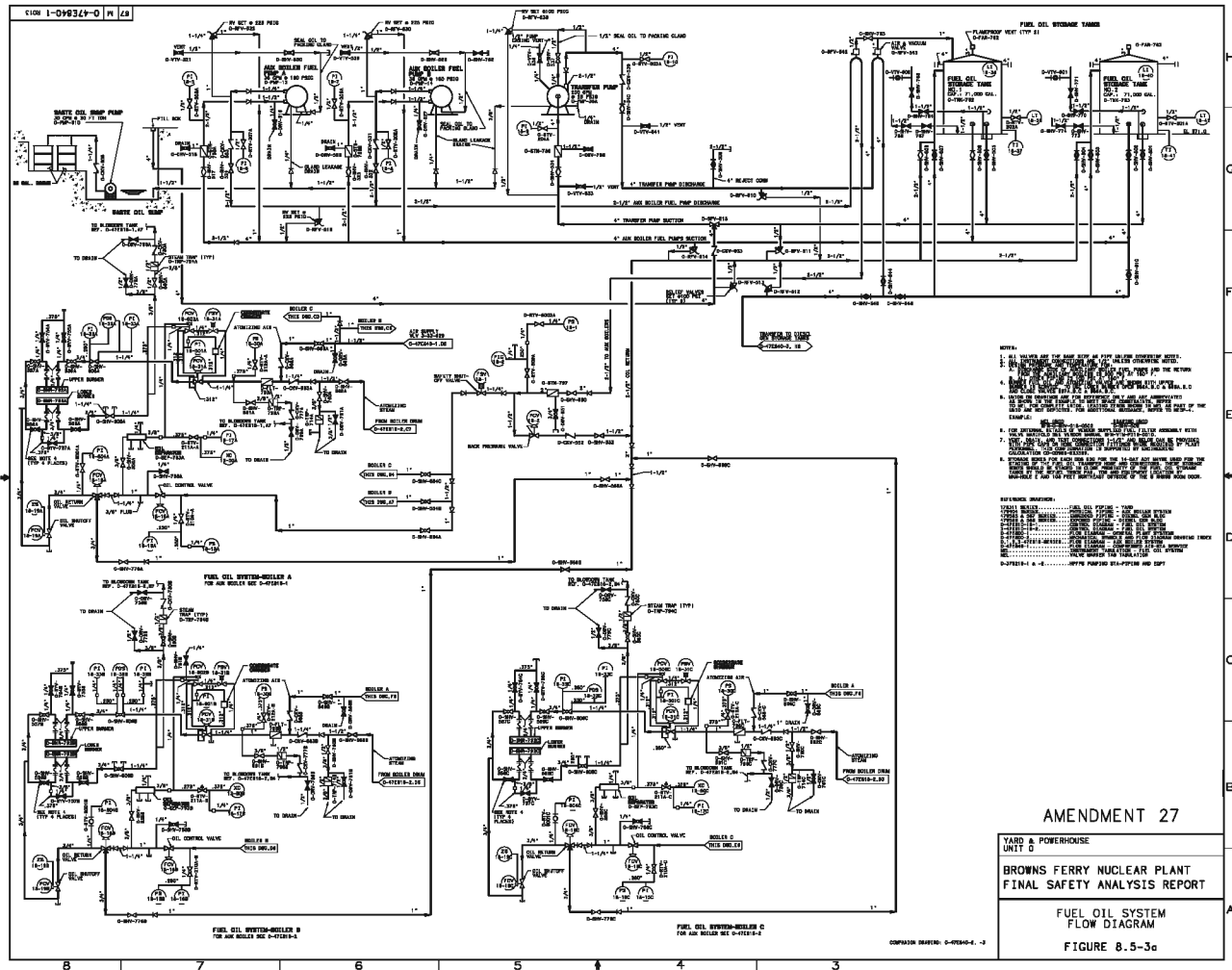
FIGURE 8.5-1

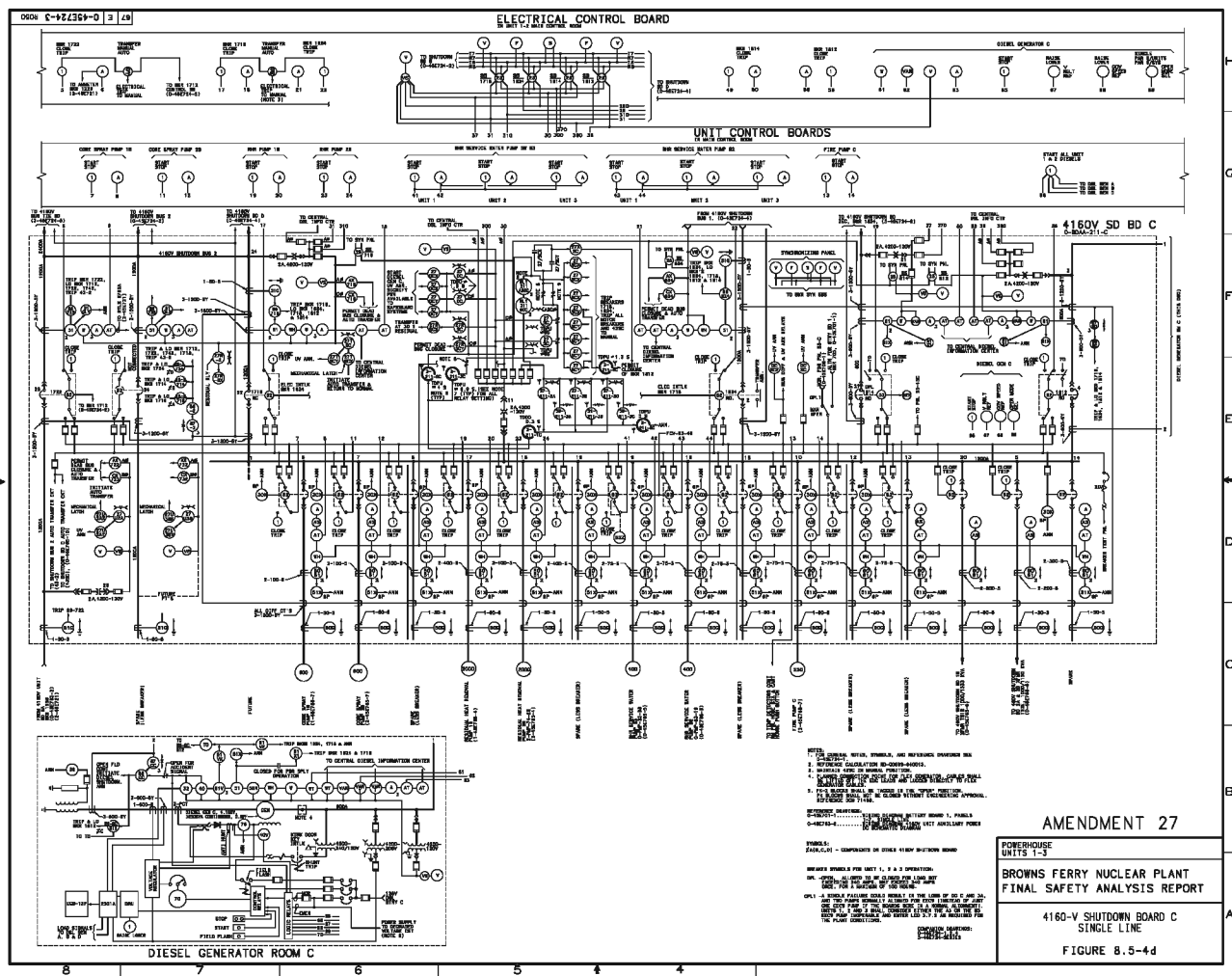
PROJECT	817	DISCIPLINE	ROAD
CONTRACT	80444	817RD	SHEET 1-3
DCBC	3 CYCLES CONCRETE PAVEMENT		
DWG/DOC NO.	S-731 ET 47		
SHEET	1	OF	REV
DATE			

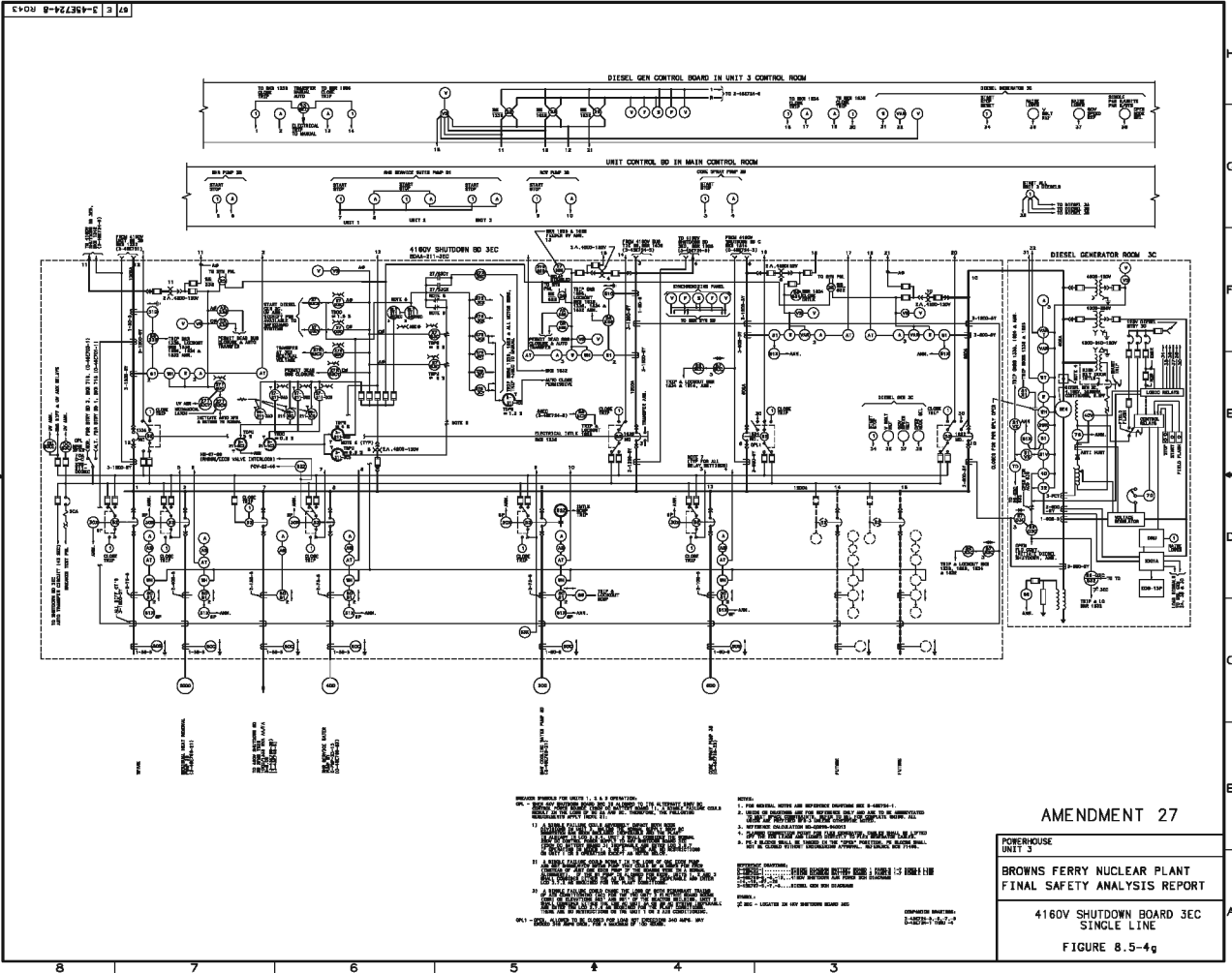










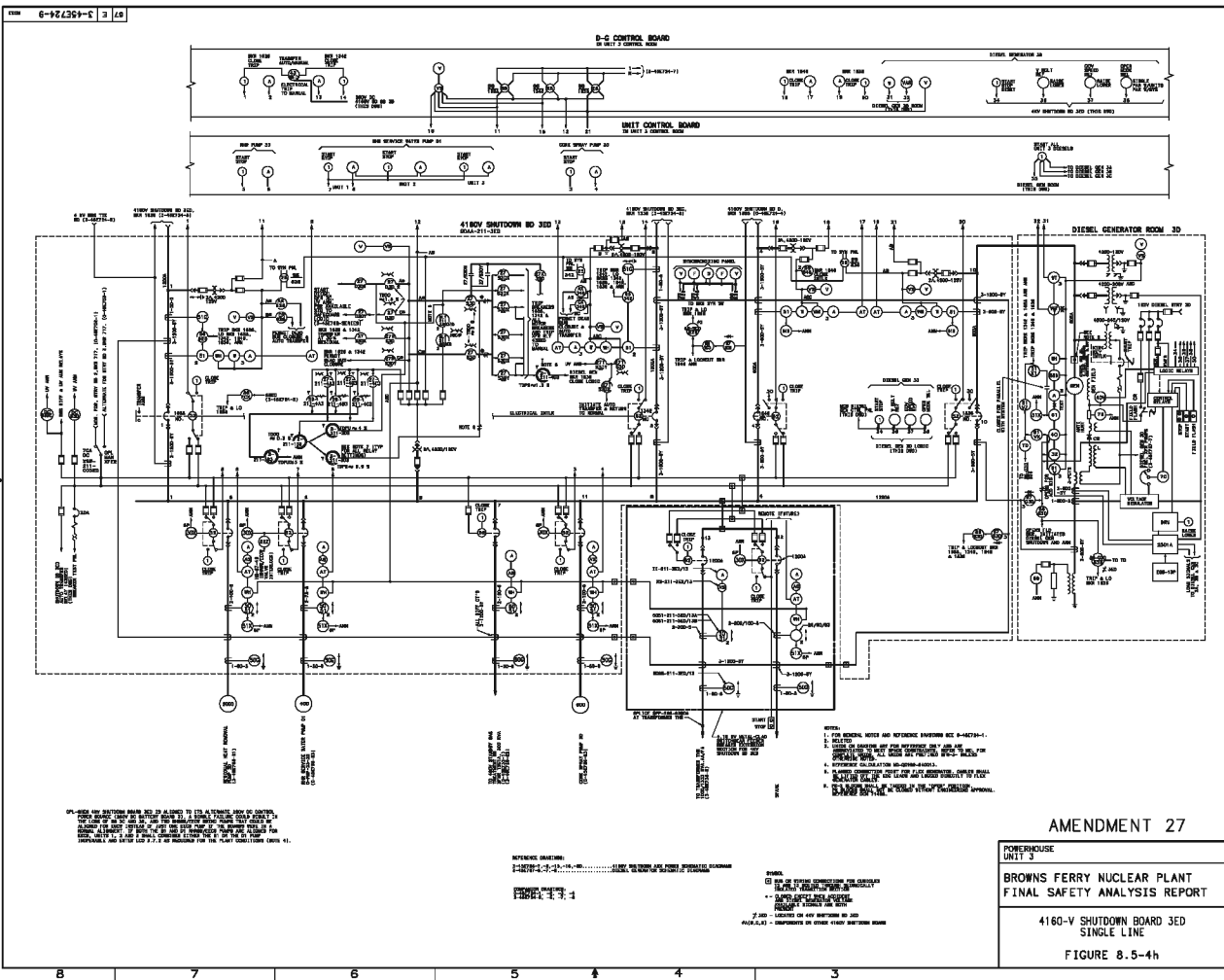


AMENDMENT 27

POWERHOUSE UNIT 3
BROWNS FERRY NUCLEAR PLANT FINAL SAFETY ANALYSIS REPORT

4160V SHUTDOWN BOARD 3EC
SINGLE LINE

FIGURE 8.5-4g



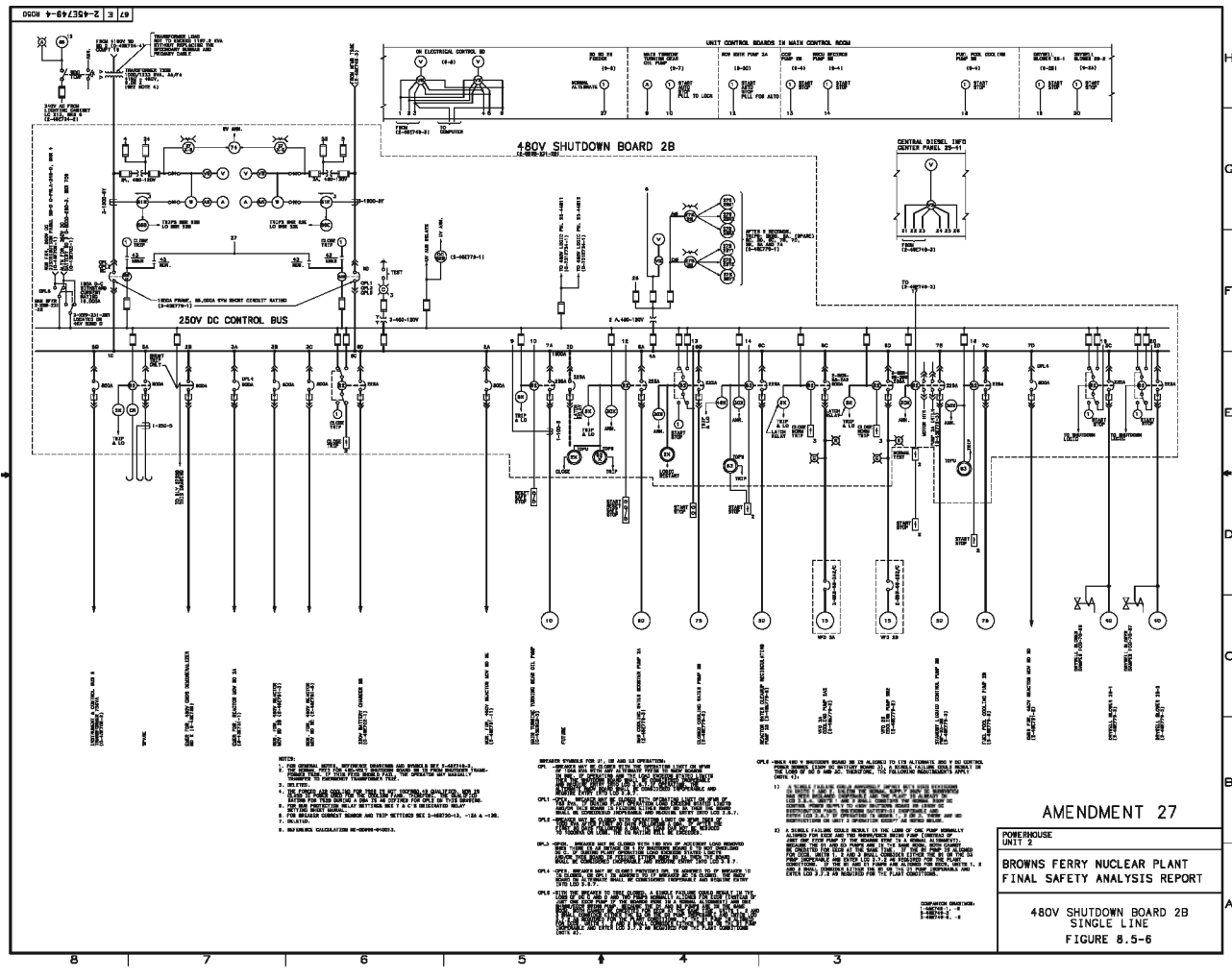
AMENDMENT 27

POWERHOUSE
UNIT 3

BROWNS FERRY NUCLEAR PLANT
FINAL SAFETY ANALYSIS REPORT

4160-V SHUTDOWN BOARD 3ED
SINGLE LINE

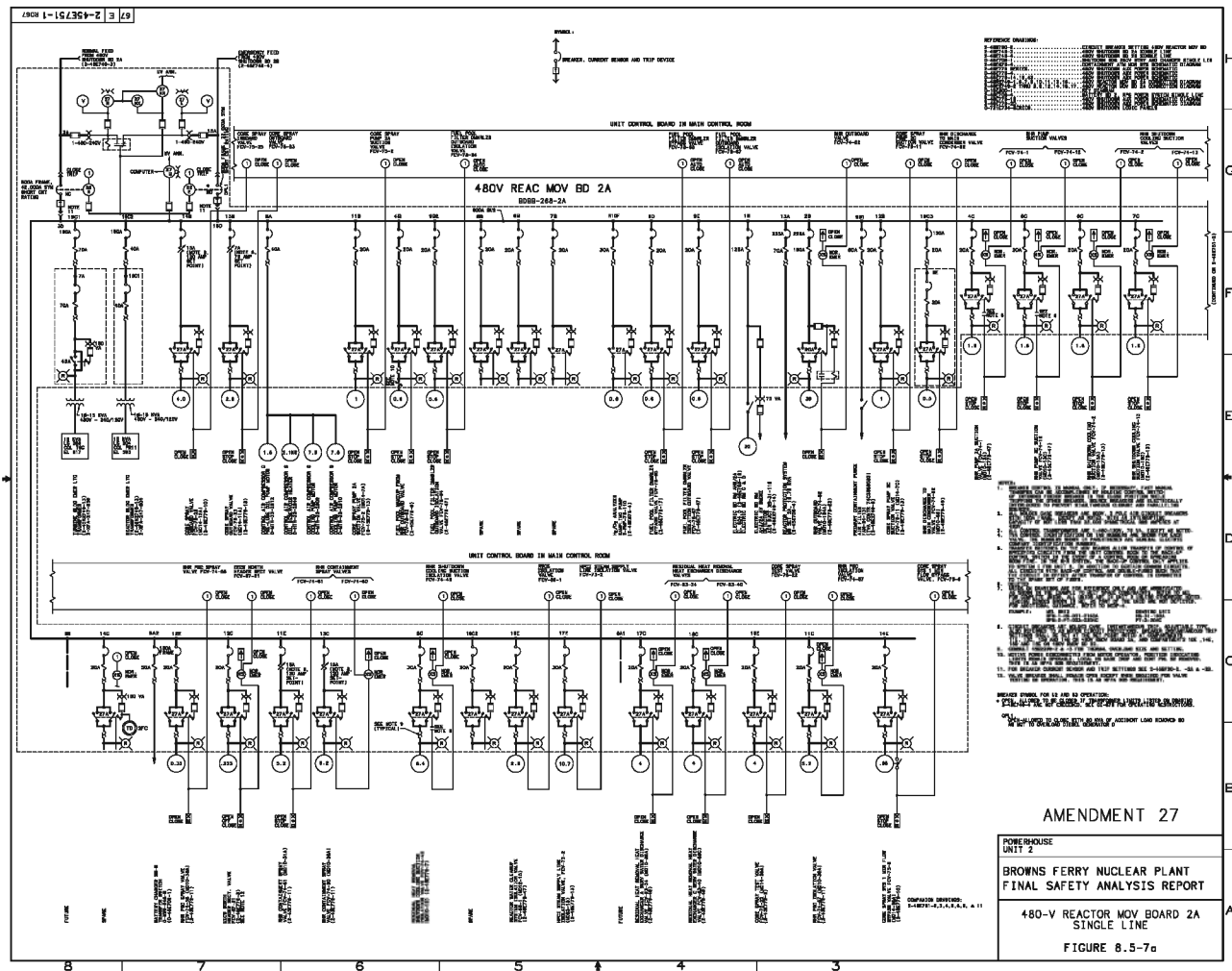
FIGURE 8.5-4h

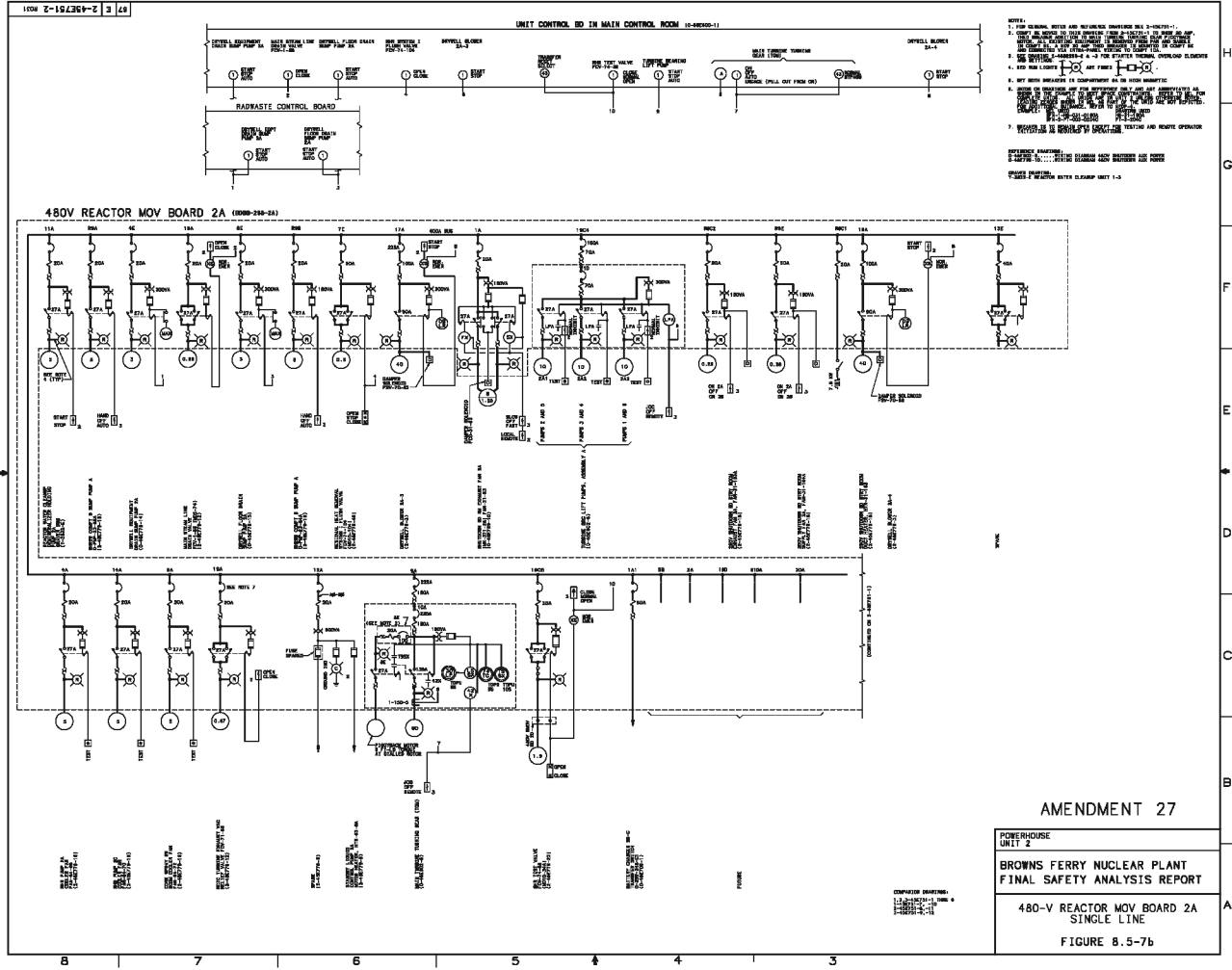


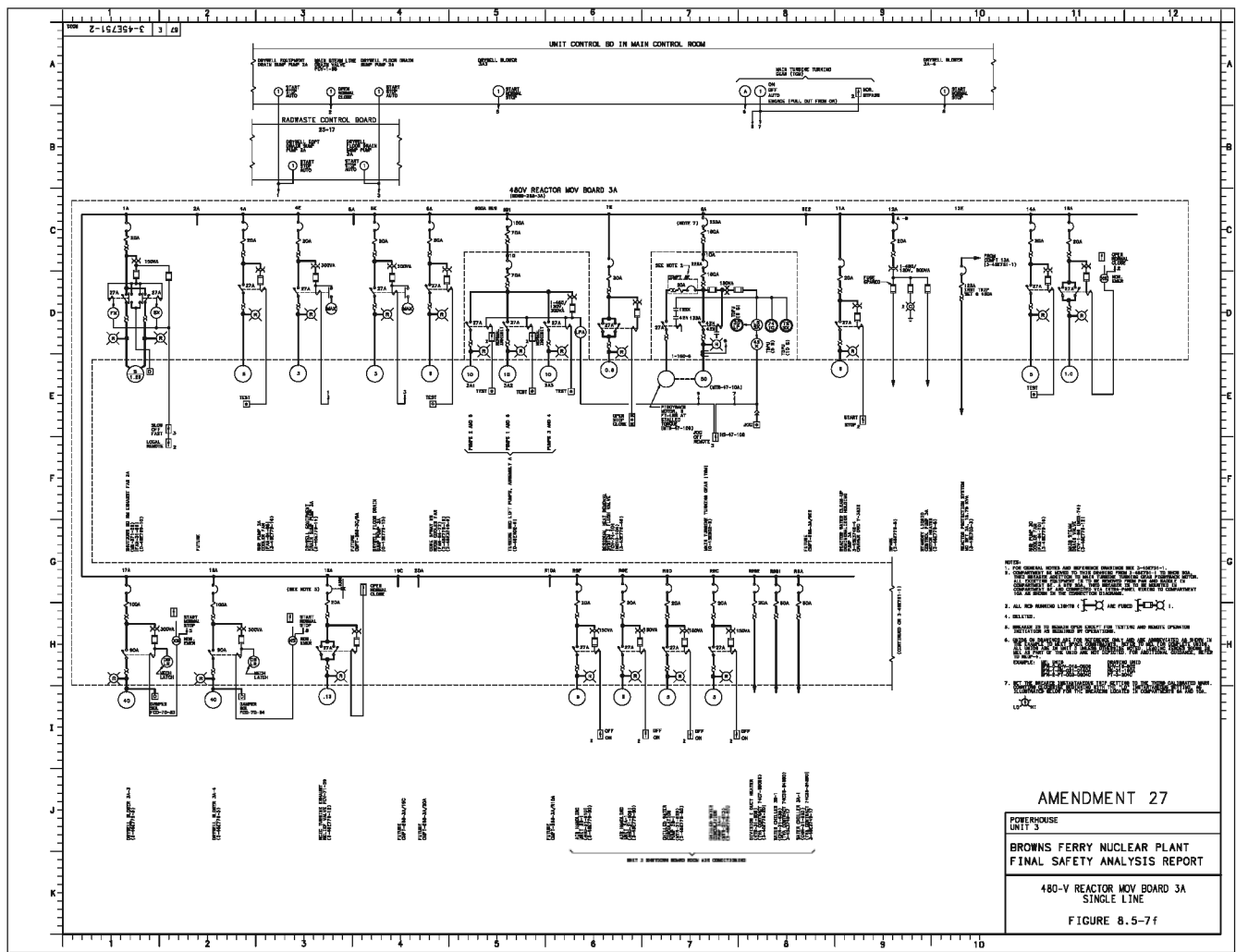
BFN-16

Figure 8.5-7

Deleted by Amendment 7.



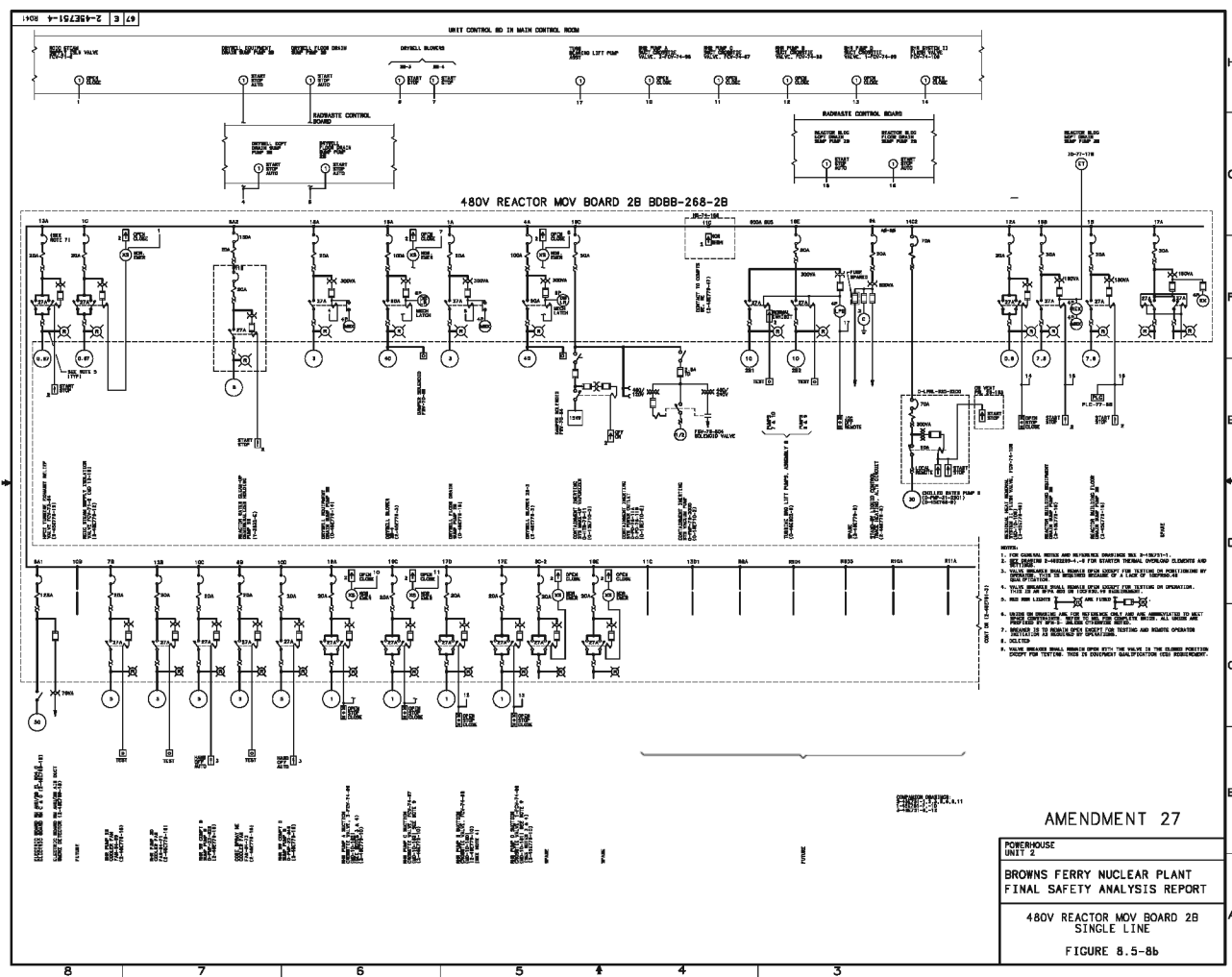




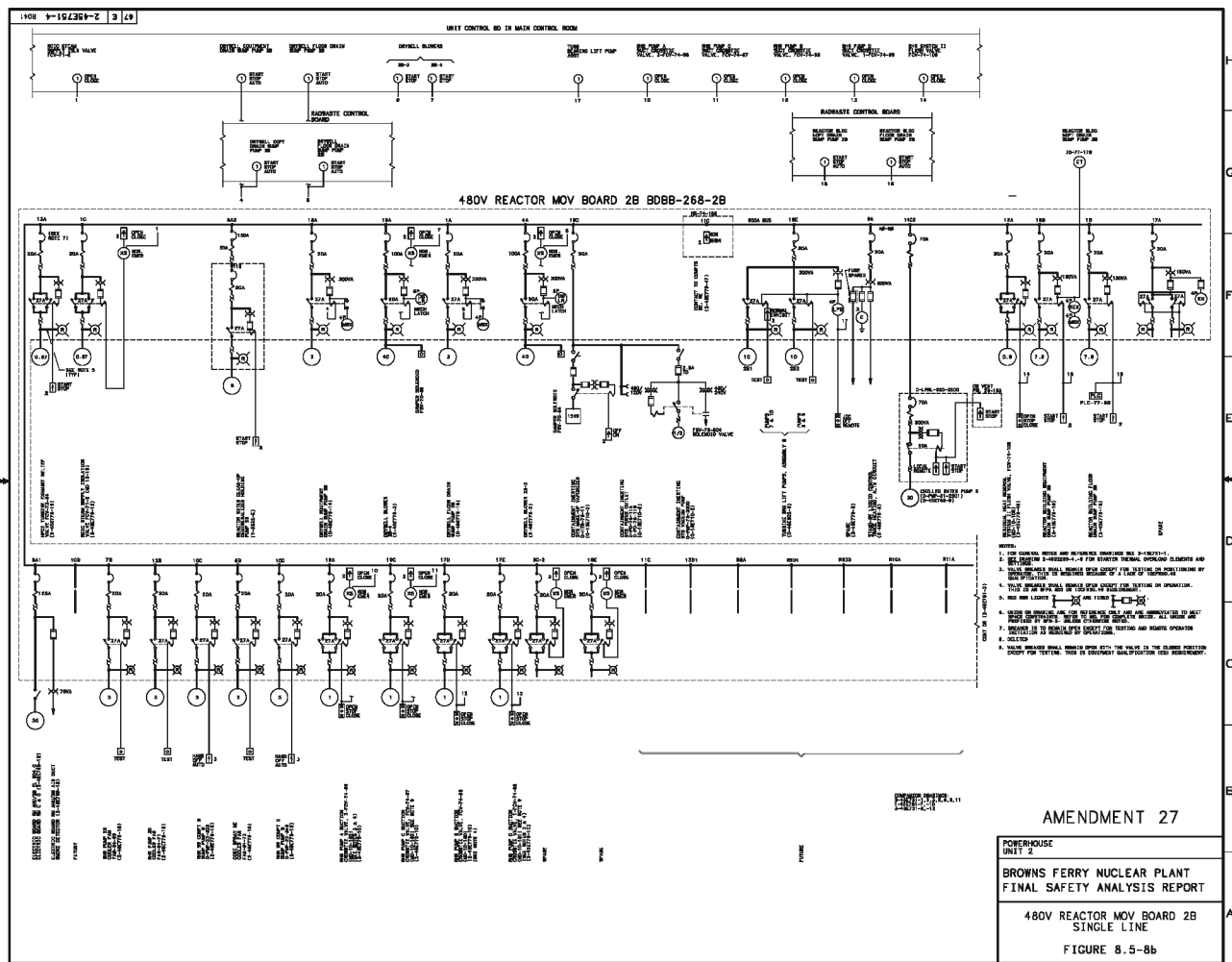
BFN-16

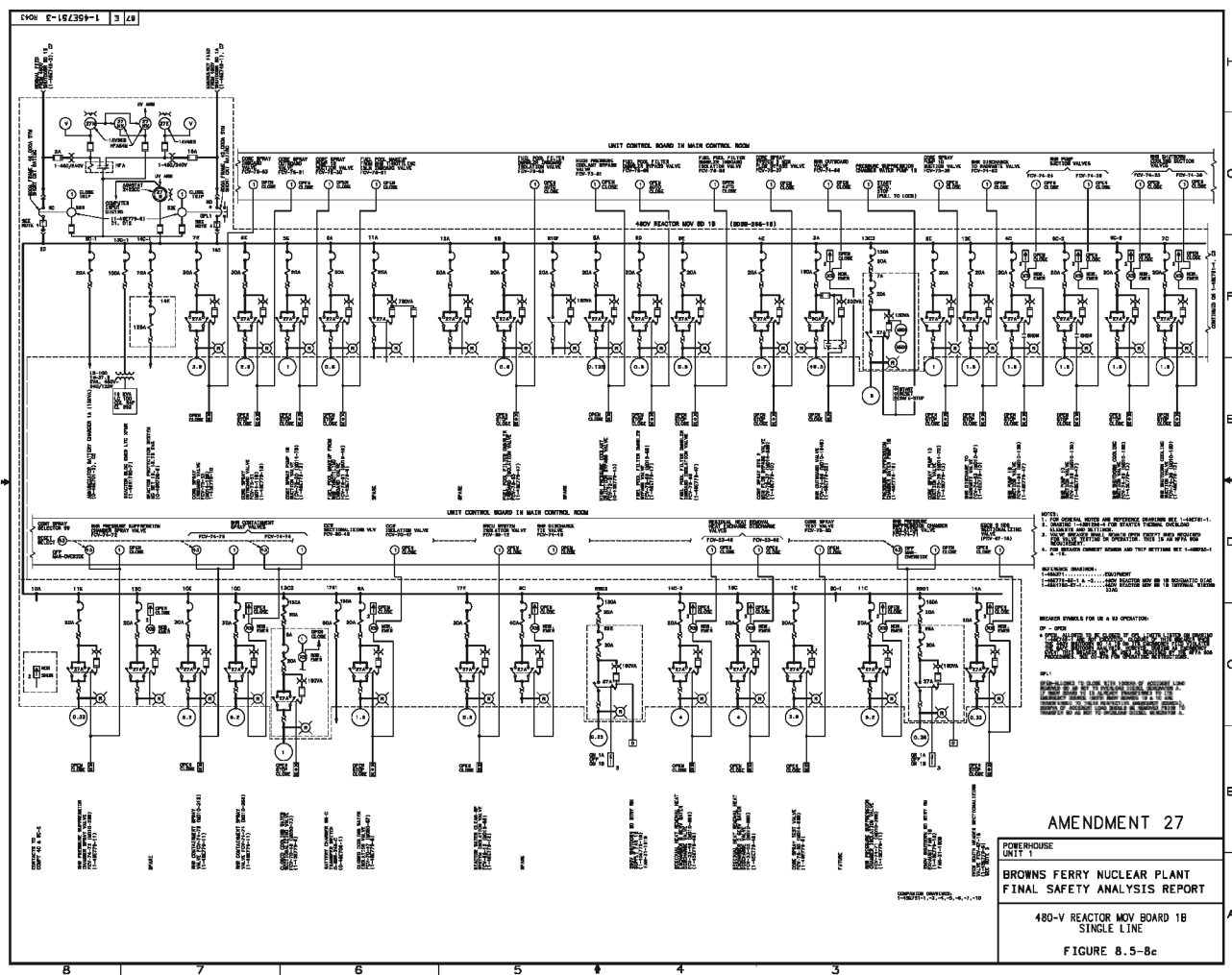
Figure 8.5-8

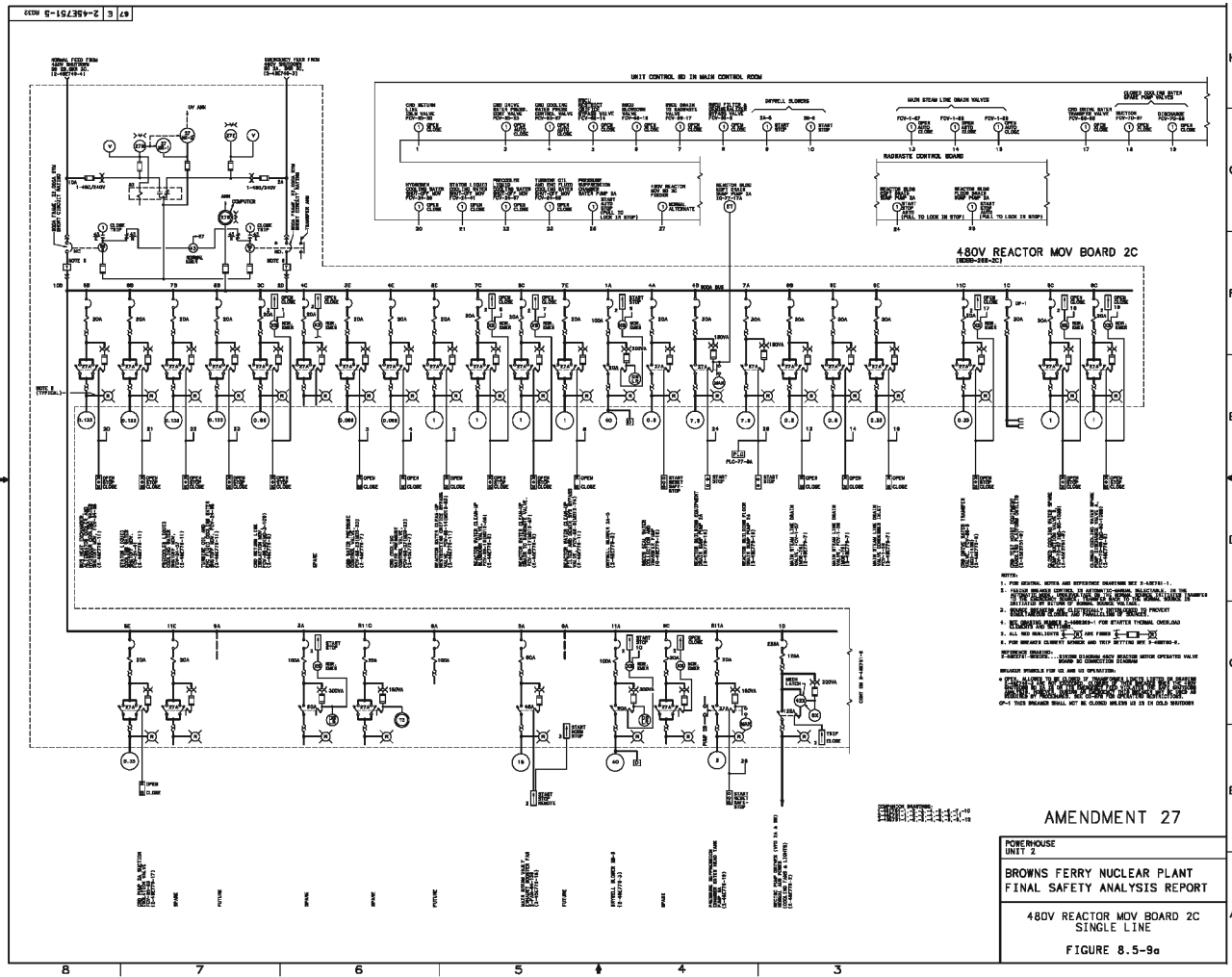
Deleted by Amendment 7.

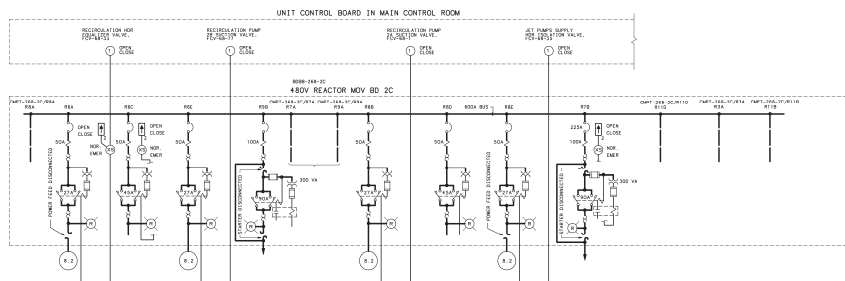












NOTES:

1. FOR GENERAL NOTES AND REFERENCE DRAWINGS SEE 2-45ET51-1.
2. ALL COMPARTMENTS WITHA PREFIX "M" ARE LOCATED IN REAR OF 480V REACTOR MOV DO 2C.
3. SEE IBC NO. 4382299-6 FOR STARTER THERMAL OVERLOAD ELEMENTS AND SETTINGS.

CPA100

REC (INFLATION) PUMP 20
VAL (108 VAL VE)
C (79-88-77) (MOIS-4.33)
2-436.335-217

TEMPORARY EMERGENCY MAINTENANCE
FIELD TO #80 954238 MON 26
COMPT 48 (2-456721-11)

TUBING (1/2" X 50 IN., UNS304L)

REGISTRATION NO. 100-100000

SPARC

```
SET PAGES 50000
SOLATION VALVE
PCN-68-75 (M02-68)
```

TEMPERATURE SENSITIVITY MECHANISMS
LEAD TO A NEW REACTION MIXTURE
COPOLYMER (2-456743-8)

Figure 12-2

TEMPERATURE (°C)

FUTURE (48%)

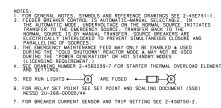
COMPARISON ORBITS:
 2-456(75)-1 T492 -5, -8, -11
 1-456(75)-1 T492 2, -10
 3-456(75)-1 T492 6, -9, -12

AMENDMENT 25

POWERHOUSE UNIT 2
BROWNS FERRY NUCLEAR PLANT FINAL SAFETY ANALYSIS REPORT
480V REACTOR MOV BOARD 2C SINGLE LINE
FIGURE 8.5-9b



POWERHOUSE UNIT 3
BROWNS FERRY NUCLEAR PLANT FINAL SAFETY ANALYSIS REPORT
480V REACTOR MOV BOARD 3C SINGLE LINE
FIGURE 8.5-9d



POWERHOUSE UNIT 2
BROWNS FERRY NUCLEAR PLANT FINAL SAFETY ANALYSIS REPORT
480V REACTOR MOV. BOARD 2D SINGLE LINE FIGURE 8.5-10

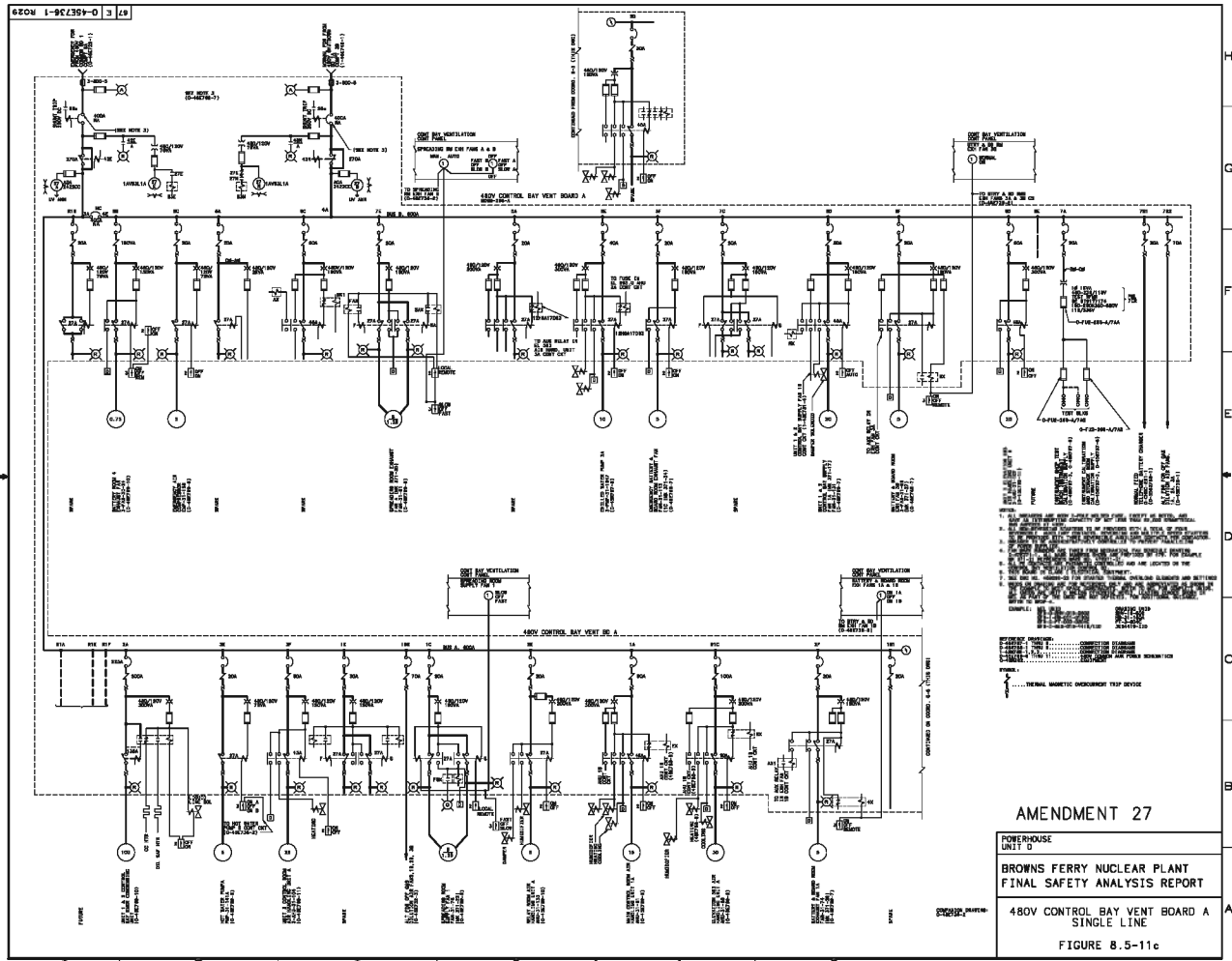
NO ISSUE FOR ECU L1541

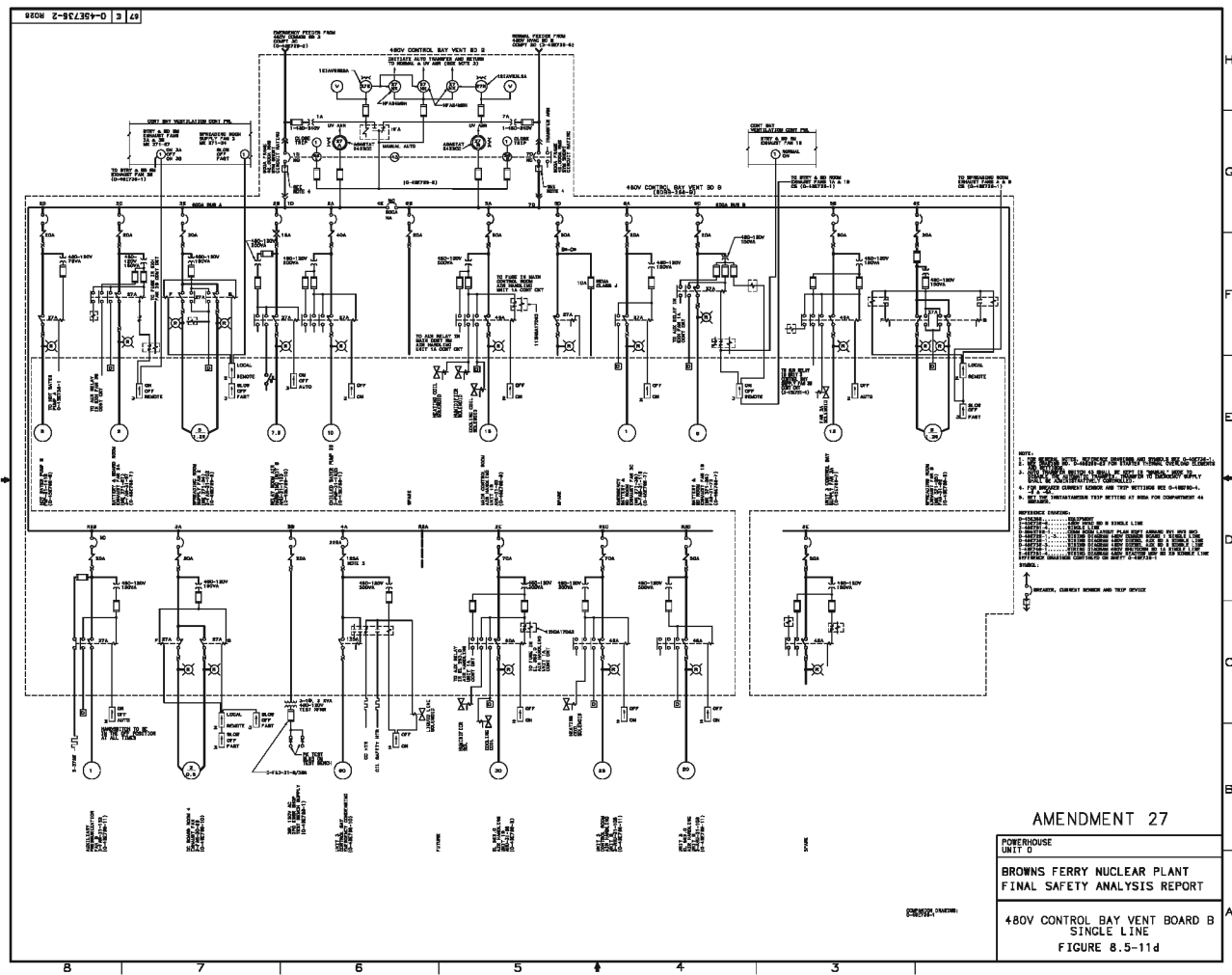
COMPARISON DRAWINGS:
1-2, 3-4, 5-6, 7-8, 9-10, 11-12, 13-14, 15-16, 17-18, 19-20, 21-22, 23-24, 25-26, 27-28, 29-30, 31-32, 33-34, 35-36, 37-38, 39-40, 41-42, 43-44, 45-46, 47-48, 49-50, 51-52, 53-54, 55-56, 57-58, 59-60, 61-62, 63-64, 65-66, 67-68, 69-70, 71-72, 73-74, 75-76, 77-78, 79-80, 81-82, 83-84, 85-86, 87-88, 89-90, 91-92, 93-94, 95-96, 97-98, 99-100, 101-102, 103-104, 105-106, 107-108, 109-110, 111-112, 113-114, 115-116, 117-118, 119-120, 121-122, 123-124, 125-126, 127-128, 129-130, 131-132, 133-134, 135-136, 137-138, 139-140, 141-142, 143-144, 145-146, 147-148, 149-150, 151-152, 153-154, 155-156, 157-158, 159-160, 161-162, 163-164, 165-166, 167-168, 169-170, 171-172, 173-174, 175-176, 177-178, 179-180, 181-182, 183-184, 185-186, 187-188, 189-190, 191-192, 193-194, 195-196, 197-198, 199-200, 201-202, 203-204, 205-206, 207-208, 209-210, 211-212, 213-214, 215-216, 217-218, 219-220, 221-222, 223-224, 225-226, 227-228, 229-230, 231-232, 233-234, 235-236, 237-238, 239-240, 241-242, 243-244, 245-246, 247-248, 249-250, 251-252, 253-254, 255-256, 257-258, 259-260, 261-262, 263-264, 265-266, 267-268, 269-270, 271-272, 273-274, 275-276, 277-278, 279-280, 281-282, 283-284, 285-286, 287-288, 289-290, 291-292, 293-294, 295-296, 297-298, 299-300, 301-302, 303-304, 305-306, 307-308, 309-310, 311-312, 313-314, 315-316, 317-318, 319-320, 321-322, 323-324, 325-326, 327-328, 329-330, 331-332, 333-334, 335-336, 337-338, 339-340, 341-342, 343-344, 345-346, 347-348, 349-350, 351-352, 353-354, 355-356, 357-358, 359-360, 361-362, 363-364, 365-366, 367-368, 369-370, 371-372, 373-374, 375-376, 377-378, 379-380, 381-382, 383-384, 385-386, 387-388, 389-390, 391-392, 393-394, 395-396, 397-398, 399-400, 401-402, 403-404, 405-406, 407-408, 409-410, 411-412, 413-414, 415-416, 417-418, 419-420, 421-422, 423-424, 425-426, 427-428, 429-430, 431-432, 433-434, 435-436, 437-438, 439-440, 441-442, 443-444, 445-446, 447-448, 449-450, 451-452, 453-454, 455-456, 457-458, 459-460, 461-462, 463-464, 465-466, 467-468, 469-470, 471-472, 473-474, 475-476, 477-478, 479-480, 481-482, 483-484, 485-486, 487-488, 489-490, 491-492, 493-494, 495-496, 497-498, 499-500, 501-502, 503-504, 505-506, 507-508, 509-510, 511-512, 513-514, 515-516, 517-518, 519-520, 521-522, 523-524, 525-526, 527-528, 529-530, 531-532, 533-534, 535-536, 537-538, 539-540, 541-542, 543-544, 545-546, 547-548, 549-550, 551-552, 553-554, 555-556, 557-558, 559-560, 561-562, 563-564, 565-566, 567-568, 569-570, 571-572, 573-574, 575-576, 577-578, 579-580, 581-582, 583-584, 585-586, 587-588, 589-590, 591-592, 593-594, 595-596, 597-598, 599-600, 601-602, 603-604, 605-606, 607-608, 609-610, 611-612, 613-614, 615-616, 617-618, 619-620, 621-622, 623-624, 625-626, 627-628, 629-630, 631-632, 633-634, 635-636, 637-638, 639-640, 641-642, 643-644, 645-646, 647-648, 649-650, 651-652, 653-654, 655-656, 657-658, 659-660, 661-662, 663-664, 665-666, 667-668, 669-670, 671-672, 673-674, 675-676, 677-678, 679-680, 681-682, 683-684, 685-686, 687-688, 689-690, 691-692, 693-694, 695-696, 697-698, 699-700, 701-702, 703-704, 705-706, 707-708, 709-710, 711-712, 713-714, 715-716, 717-718, 719-720, 721-722, 723-724, 725-726, 727-728, 729-730, 731-732, 733-734, 735-736, 737-738, 739-740, 741-742, 743-744, 745-746, 747-748, 749-750, 751-752, 753-754, 755-756, 757-758, 759-760, 761-762, 763-764, 765-766, 767-768, 769-770, 771-772, 773-774, 775-776, 777-778, 779-780, 781-782, 783-784, 785-786, 787-788, 789-790, 791-792, 793-794, 795-796, 797-798, 799-800, 801-802, 803-804, 805-806, 807-808, 809-810, 811-812, 813-814, 815-816, 817-818, 819-820, 821-822, 823-824, 825-826, 827-828, 829-830, 831-832, 833-834, 835-836, 837-838, 839-840, 841-842, 843-844, 845-846, 847-848, 849-850, 851-852, 853-854, 855-856, 857-858, 859-860, 861-862, 863-864, 865-866, 867-868, 869-870, 871-872, 873-874, 875-876, 877-878, 879-880, 881-882, 883-884, 885-886, 887-888, 889-890, 891-892, 893-894, 895-896, 897-898, 899-900, 901-902, 903-904, 905-906, 907-908, 909-910, 911-912, 913-914, 915-916, 917-918, 919-920, 921-922, 923-924, 925-926, 927-928, 929

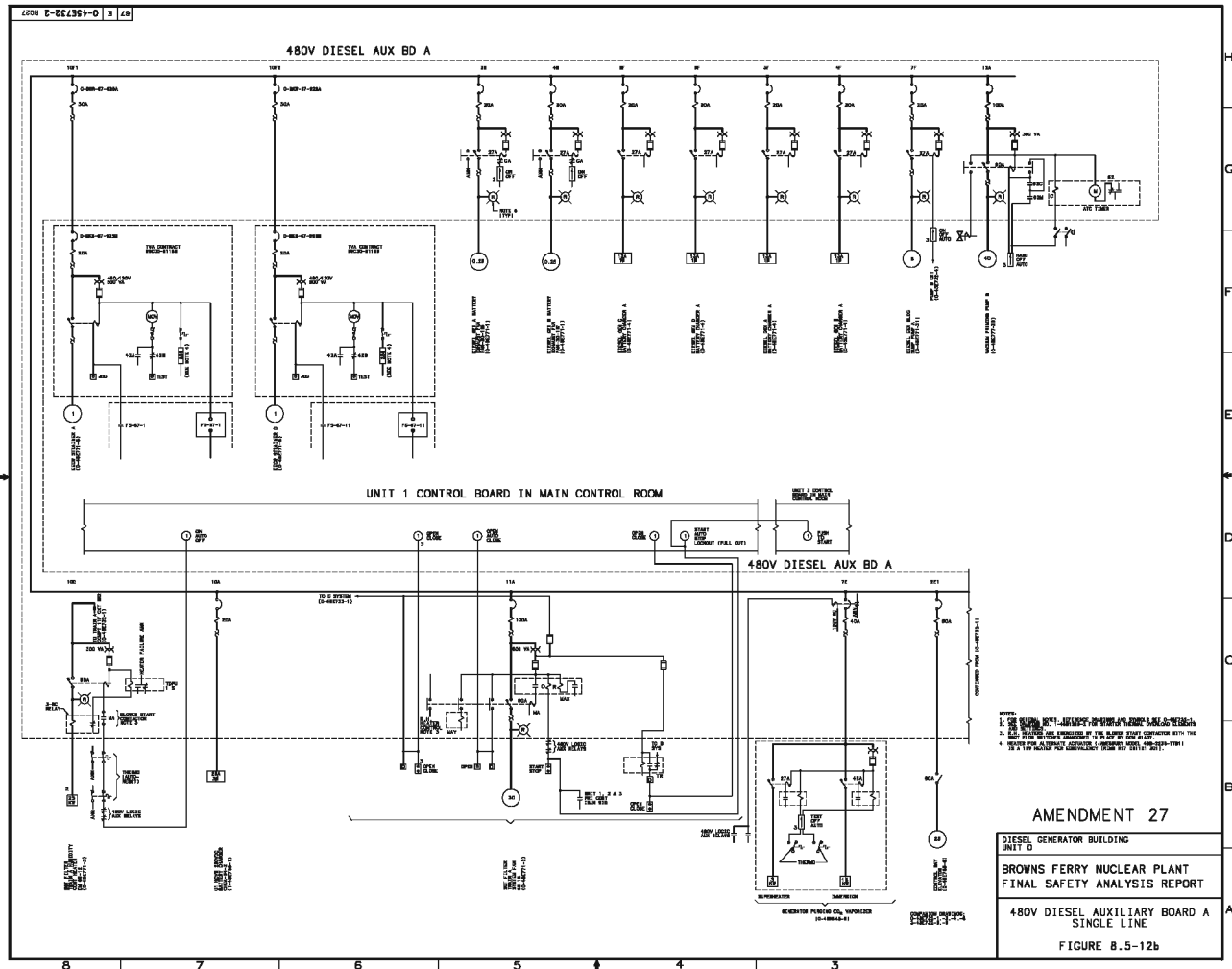
BFN-16

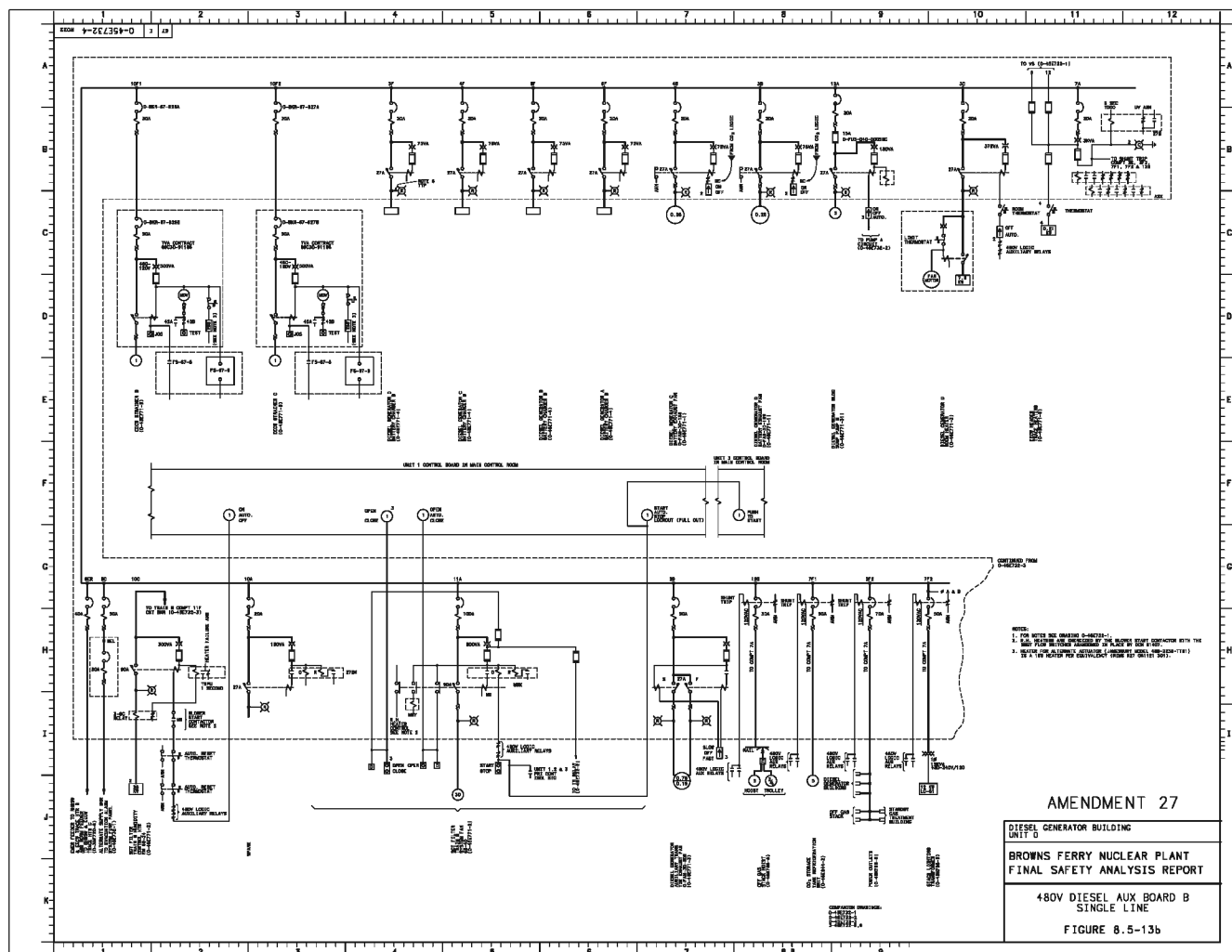
Figure 8.5-11b

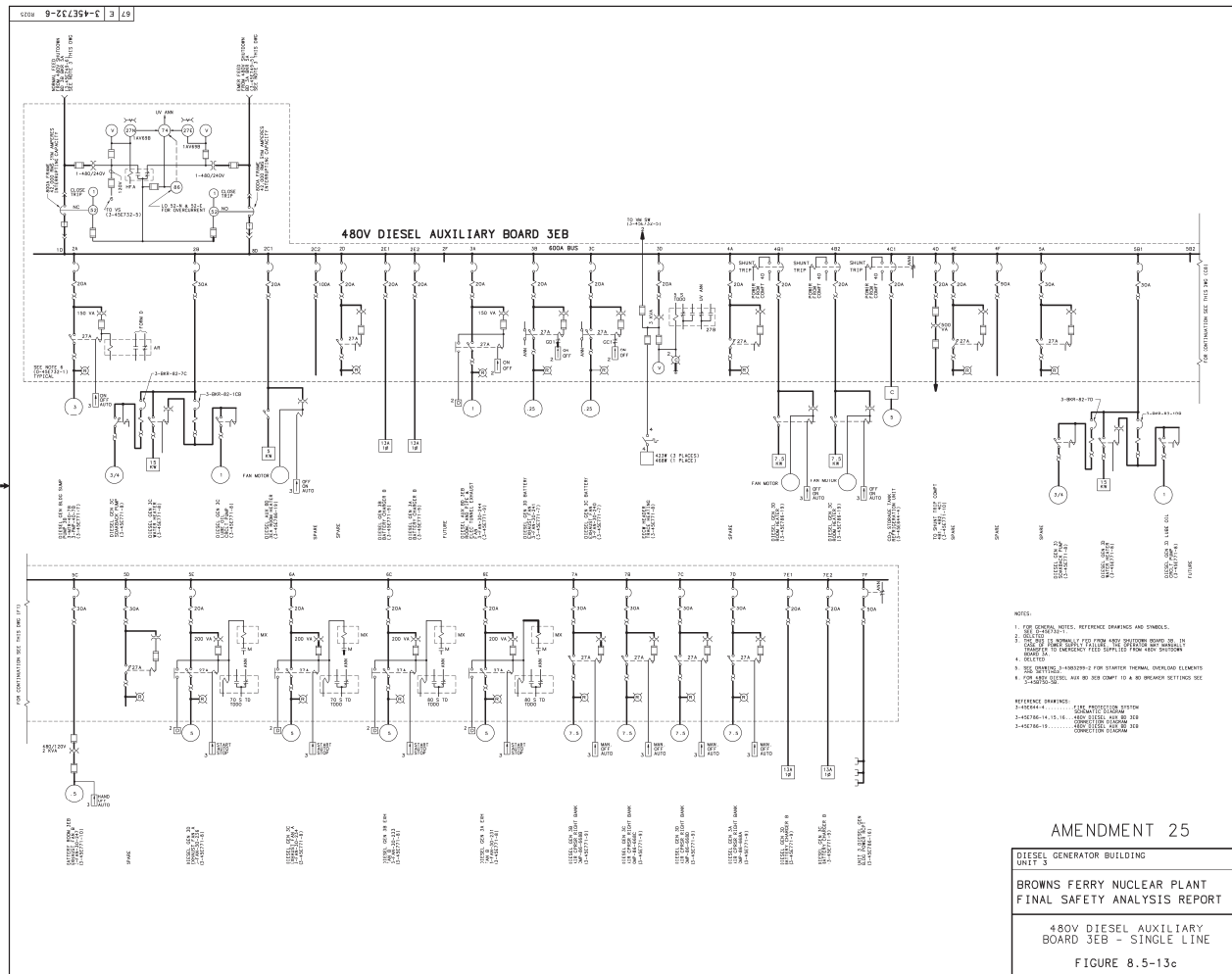
Deleted by Amendment 7.







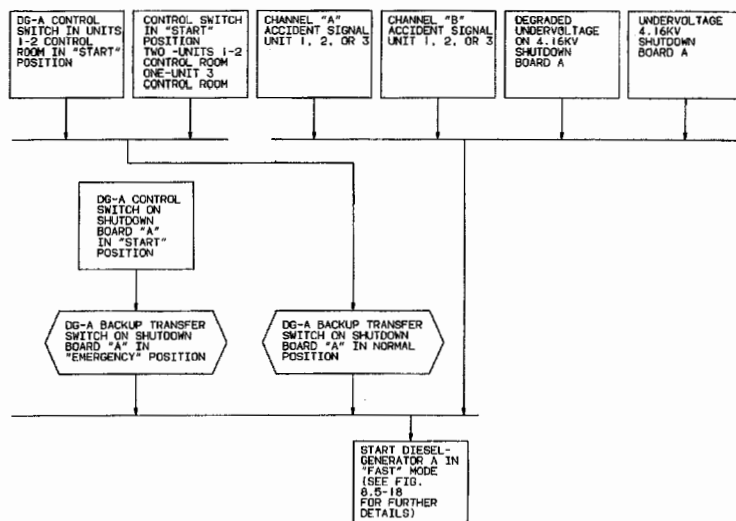




BFN-16

Figure 8.5-14

Deleted by Amendment 7.

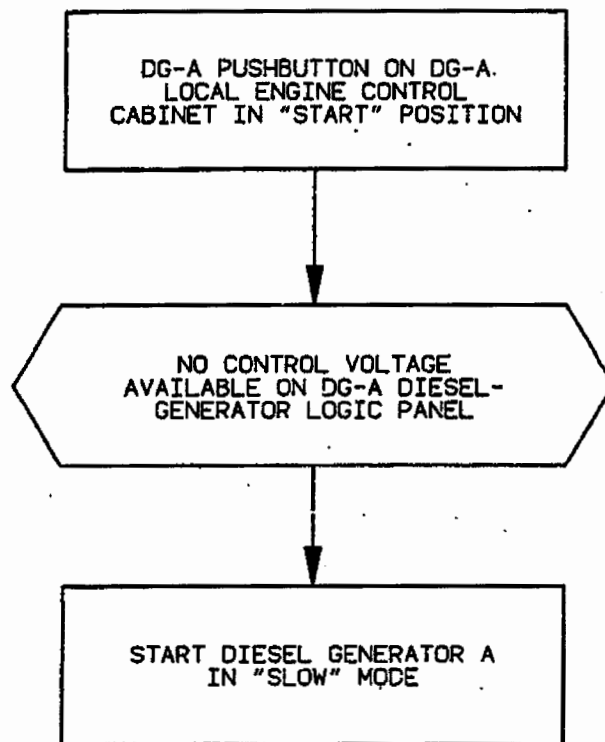


NOTE:
1. FOR DIESEL GENERATOR A, ALL OTHER DIESEL GENERATORS SIMILAR.

AMENDMENT 22

BROWNS FERRY NUCLEAR PLANT
FINAL SAFETY ANALYSIS REPORT

DIESEL GENERATOR LOGIC
DIAGRAM
FAST START
FIGURE 8.5-14a



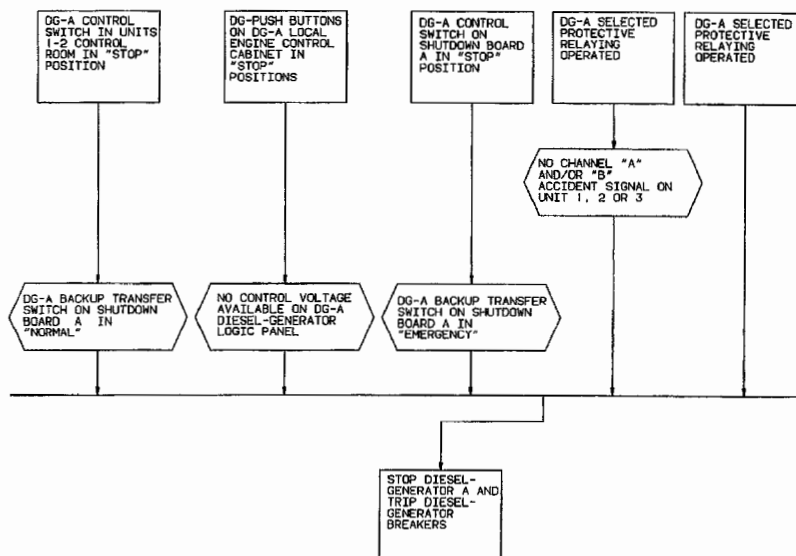
NOTE: FOR DIESEL GENERATOR A;
ALL OTHER DIESEL GENERATORS
SIMILAR.

AMENDMENT 16

BROWNS FERRY NUCLEAR PLANT
FINAL SAFETY ANALYSIS REPORT

DIESEL GENERATOR LOGIC DIAGRAM-
SLOW START

FIGURE 8.5-14b

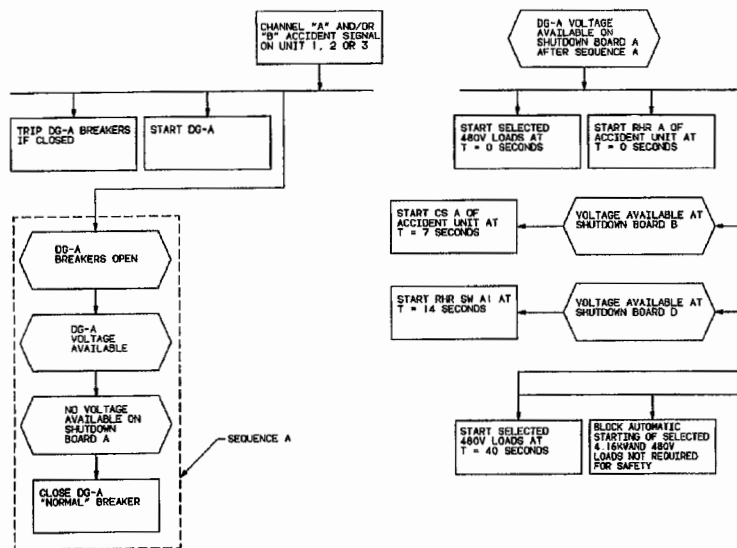


NOTE:
1. FOR DIESEL GENERATOR A, ALL OTHER DIESEL GENERATORS SIMILAR.

AMENDMENT 22

BROWNS FERRY NUCLEAR PLANT
FINAL SAFETY ANALYSIS REPORT

DIESEL GENERATOR LOGIC
DIAGRAM
STOP
FIGURE 8.5-14c



NOTE:
 1. FOR DIESEL GENERATOR A, ALL OTHER DIESEL GENERATORS SIMILAR

AMENDMENT 22

BROWNS FERRY NUCLEAR PLANT
 FINAL SAFETY ANALYSIS REPORT

DIESEL GENERATOR
 LOGIC DIAGRAM
 AUTOMATIC LOADING
 FIGURE 8.5-15

LOSS OF VOLTAGE ON
SHUTDOWN BOARD A
FOR 5 SECONDS WITH
NORMAL SOURCE OF
POWER

TRIP ALL MOTOR
FEEDER BREAKERS AND
NORMAL SOURCE
INCOMING BREAKERS
ON SHUTDOWN BOARD A

LOSS OF VOLTAGE ON
SHUTDOWN BOARD A
FOR 5 SECONDS WITH
DIESEL GENERATOR
SOURCE OF POWER

NO ACCIDENT SIGNAL ON
UNIT 1, 2 OR 3

TRIP ALL MOTOR
FEEDER BREAKERS
ON SHUTDOWN BOARD
A

NOTE:
1. FOR SHUTDOWN BOARD A,
ALL OTHER SHUTDOWN BOARDS SIMILAR.

AMENDMENT 22

BROWNS FERRY NUCLEAR PLANT
FINAL SAFETY ANALYSIS REPORT

STANDBY A-C POWER LOGIC DIAGRAM
LOAD SHEDDING, 4.16KV SHUTDOWN
BOARD
FIGURE 8.5-16a

LOSS OF VOLTAGE ON
480V SHUTDOWN BOARD
FOR 2 SECONDS

TRIP SELECTED
MOTOR FEEDER
BREAKERS

CHANNEL "A" AND/OR
"B" ACCIDENT SIGNAL
ON UNIT 1 OR 2;
CHANNEL "A" OR "B"
ACCIDENT SIGNAL ON
UNIT 3

DIESEL GENERATOR A,
B, C OR D VOLTAGE
AVAILABLE ON A 4.16KV
SHUTDOWN BOARD
ASSOCIATED DIESEL
GENERATOR 3A, 3B OR
3C VOLTAGE AVAILABLE

SELECTED MOTOR FEEDER
BREAKERS TRIPPED AND
THEN AUTOMATICALLY
RECLOSED AFTER A TIME
DELAY

SELECTED MOTOR FEEDER
BREAKERS TRIPPED AND
BLOCKED FROM AUTOMATIC
RECLOSE

AMENDMENT 22

REACTOR BUILDING
UNITS 1, 2 & 3

BROWNS FERRY NUCLEAR PLANT
FINAL SAFETY ANALYSIS REPORT

STANDBY A-C POWER LOGIC DIAGRAM
LOAD SHEDDING, 480V SHUTDOWN
BOARD

FIGURE 8.5-16b

LOSS OF VOLTAGE ON
480V REACTOR MOV
BOARD

SELECTED STARTERS
OPEN

CHANNEL "A" AND/OR
"B" ACCIDENT SIGNAL
ON UNIT 1 OR 2;
CHANNEL "A" OR "B"
ACCIDENT SIGNAL ON
UNIT 3

DIESEL GENERATOR A,
B, C OR D VOLTAGE
AVAILABLE ON A 4.16KV
SHUTDOWN BOARD
ASSOCIATED DIESEL
GENERATOR 3A, 3B OR
3C VOLTAGE AVAILABLE

SELECTED STARTERS
TRIPPED AND BLOCKED
FROM AUTOMATIC
RECLOSURE

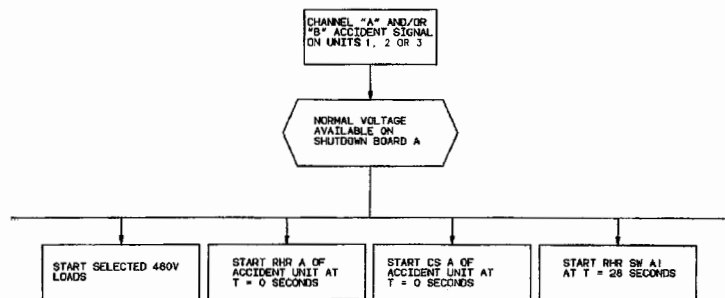
SELECTED STARTERS
TRIPPED AND THEN
AUTOMATICALLY
RECLOSED AFTER A TIME
DELAY

AMENDMENT 22

UNITS 1, 2 & 3

BROWNS FERRY NUCLEAR PLANT
FINAL SAFETY ANALYSIS REPORT

STANDBY A-C POWER LOGIC DIAGRAM
LOAD SHEDDING, 480V REACTOR
MOV BOARD
FIGURE 8.5-16c

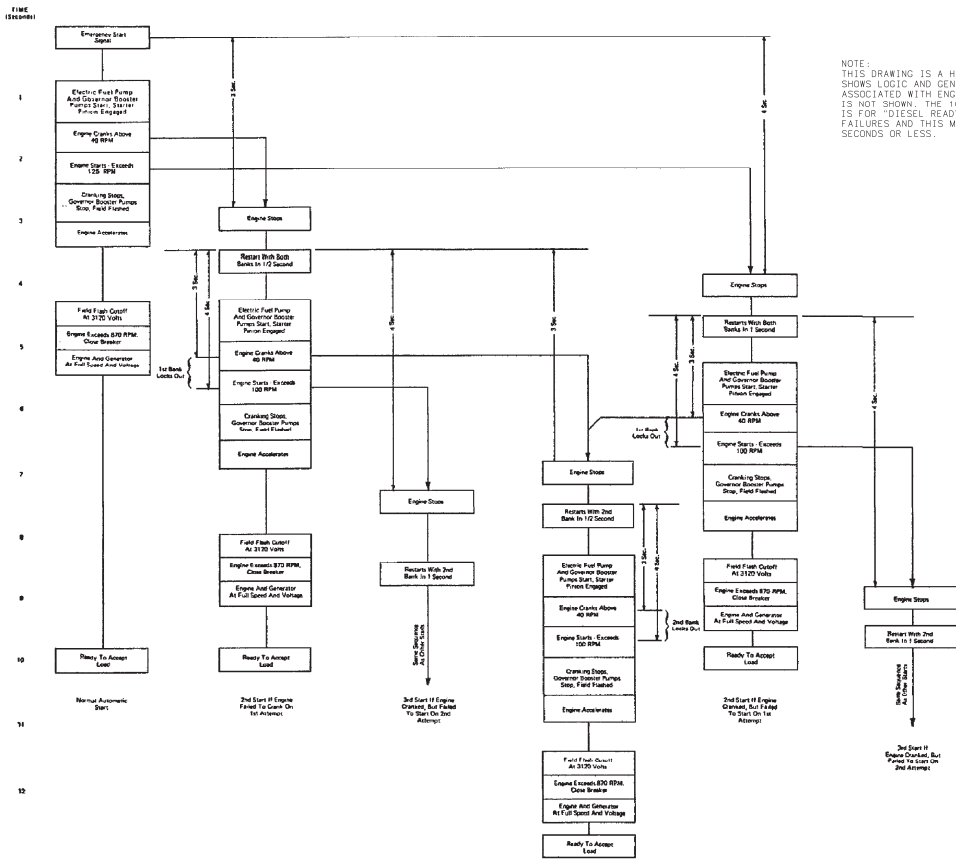


NOTE:
1. FOR SHUTDOWN BOARD A, ALL
OTHER SHUTDOWN BOARDS SIMILAR.

AMENDMENT 22

BROWNS FERRY NUCLEAR PLANT
FINAL SAFETY ANALYSIS REPORT
STANDBY A-C POWER LOGIC DIAGRAM
AUTOMATED LOADING OF SHUTDOWN
BOARD, NORMAL POWER AVAILABLE
FIGURE 8.5-17

OPERATION



AMENDMENT 25

BROWNS FERRY NUCLEAR PLANT
FINAL SAFETY ANALYSIS REPORT

DIESEL START ATTEMPTS
BLOCK DIAGRAM

FIGURE 8.5-18

BFN-16

Figure 8.5-19

Deleted by Amendment 10.

BFN-16

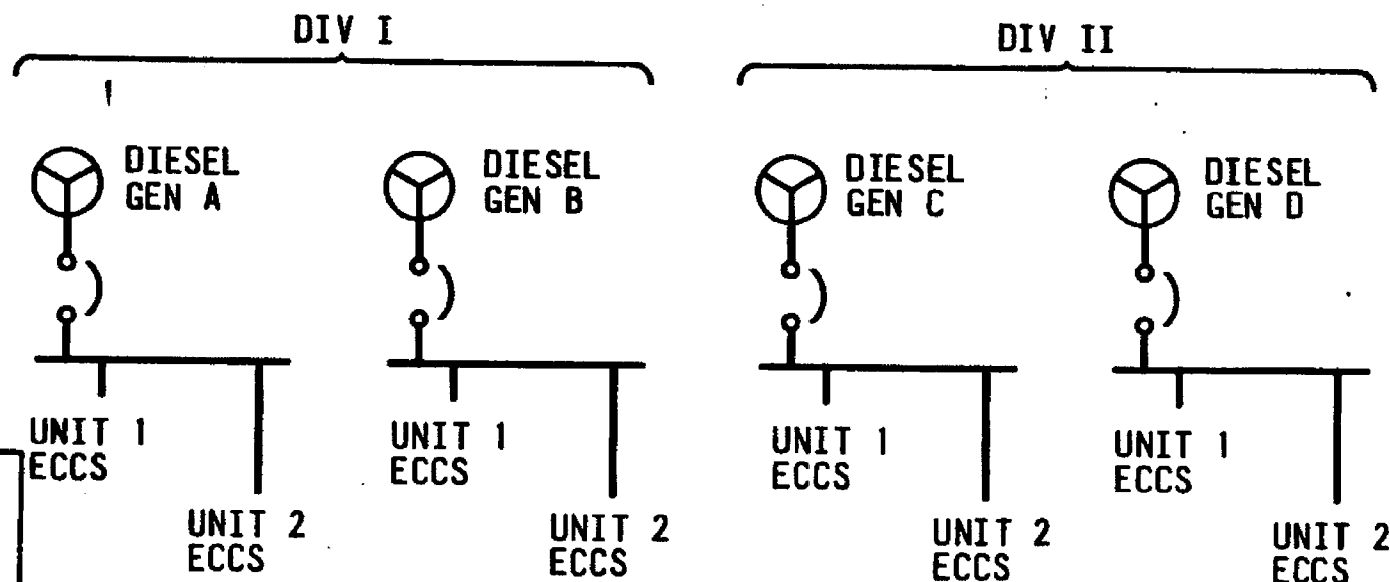
Figure 8.5-20

Deleted by Amendment 10.

BFN-16

Figure 8.5-21

Deleted by Amendment 10.



AMENDMENT 16

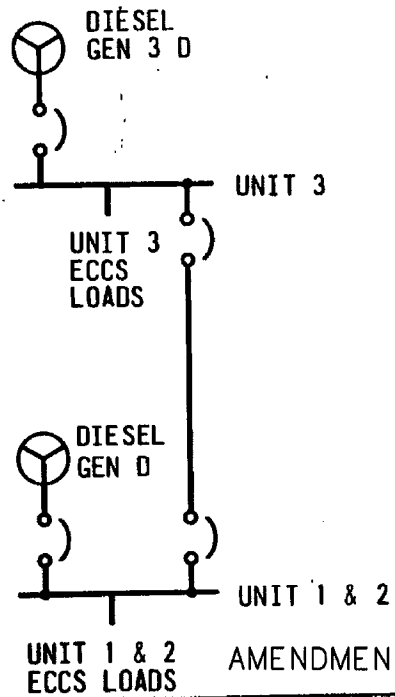
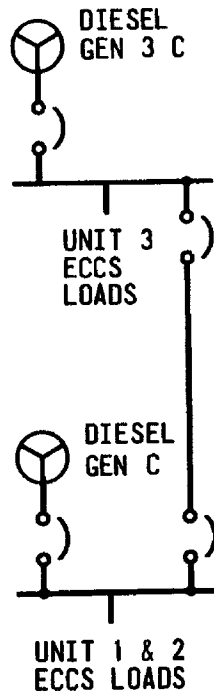
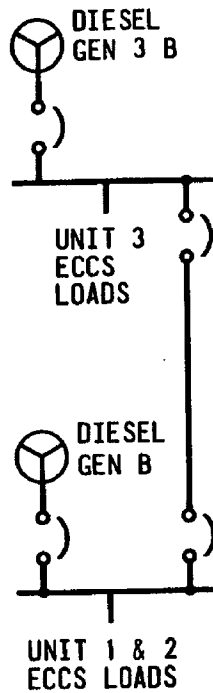
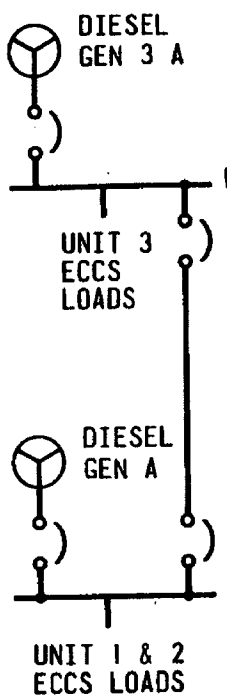
BROWNS FERRY NUCLEAR PLANT
FINAL SAFETY ANALYSIS REPORT

Division I and II Assignments
Units 1 and 2
Figure 8.5-22

BFN-16

Figure 8.5-23

Deleted by Amendment 10.



UNIT 3

UNIT 1 & 2

AMENDMENT 16

BROWNS FERRY NUCLEAR PLANT
FINAL SAFETY ANALYSIS REPORT

Unit 3 - Units 1-2
Interconnections
Figure 8.5-24

