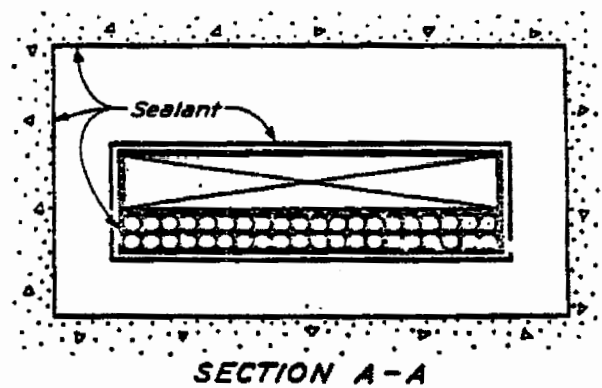
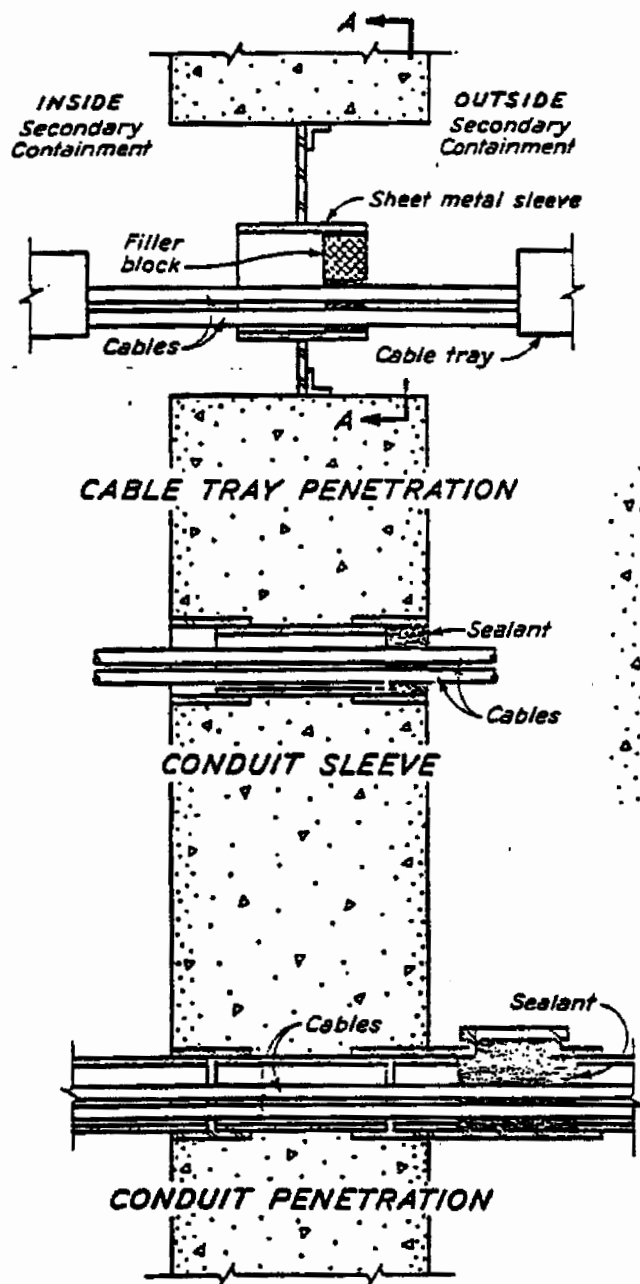


AMENDMENT 16

BROWNS FERRY NUCLEAR PLANT
FINAL SAFETY
ANALYSIS REPORT

Secondary Containment Typical
Pipe Penetration
Figure 5.3-1



AMENDMENT 16

BROWNS FERRY NUCLEAR PLANT
FINAL SAFETY
ANALYSIS REPORT

Secondary Containment Typical
Electrical Penetrations
Figure 5.3-2

**BROWNS FERRY NUCLEAR PLANT
FINAL SAFETY
ANALYSIS REPORT**

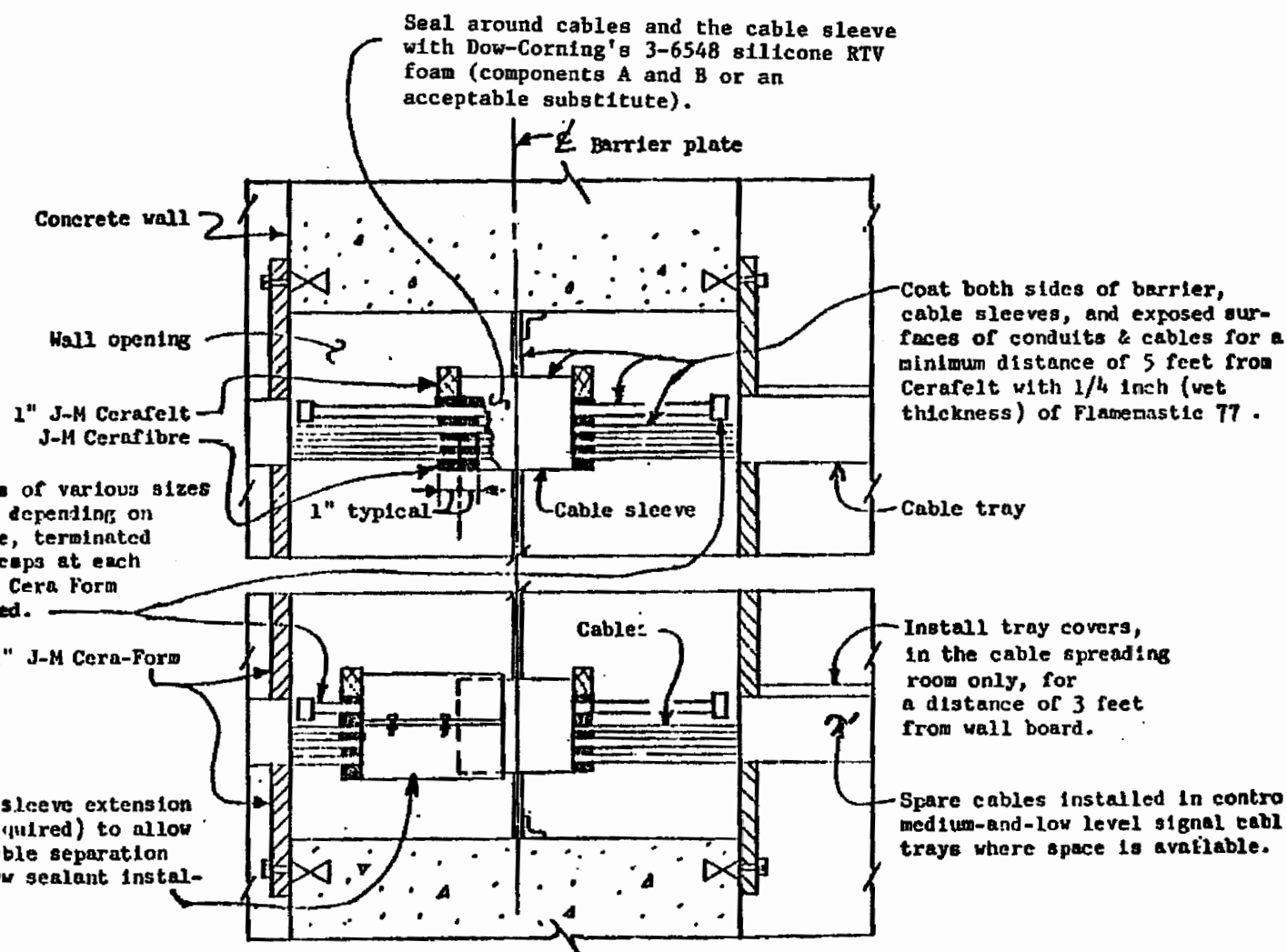
Secondary Containment Typical
Horizontal Penetration Through
Wall Requiring Pressure Seal

FIGURE 5.3-2a

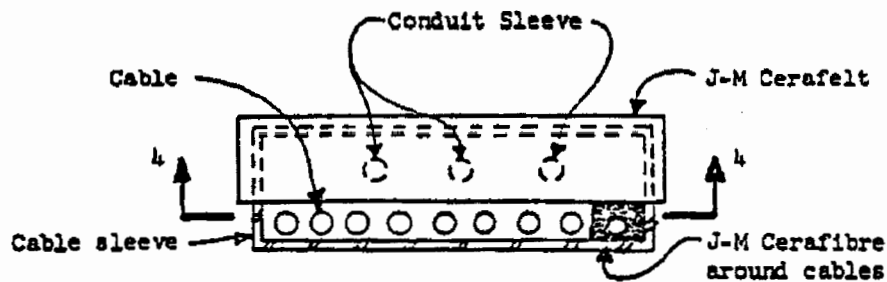
AMENDMENT 16

Conduit sleeves of various sizes and quantities depending on available space, terminated with plugs or caps at each end behind the Cera Form board until used.

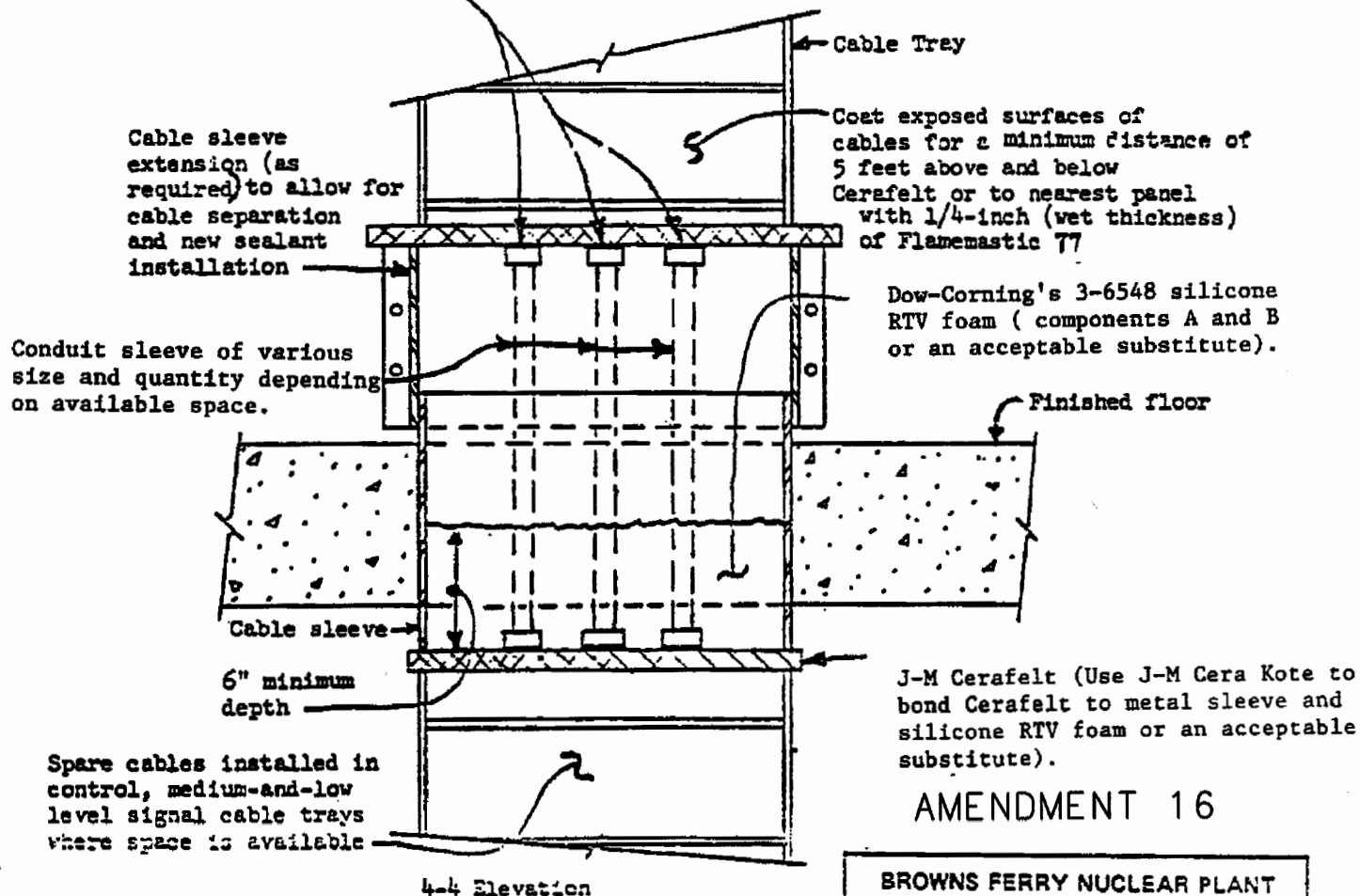
Cable sleeve extension (as required) to allow for cable separation and new sealant installation



TYPICAL HORIZONTAL PENETRATION THROUGH WALL REQUIRING PRESSURE SEAL



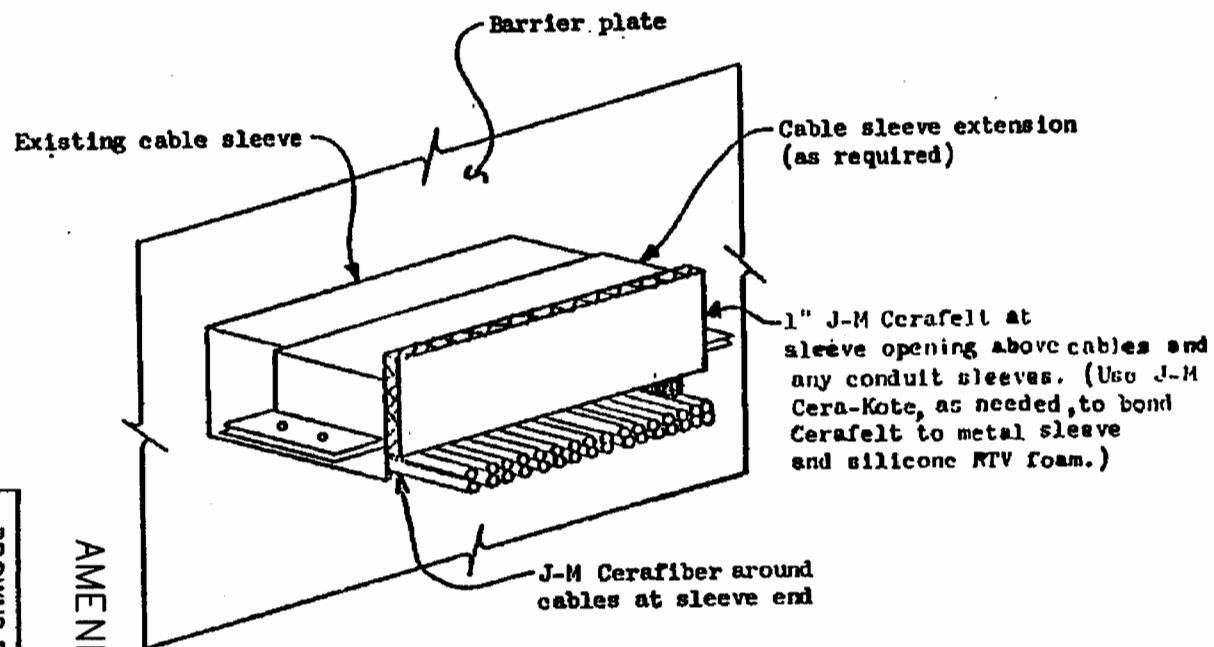
Conduit sleeve terminated with plug or cap at each end behind the J-M Cerafelt until used



**BROWNS FERRY NUCLEAR PLANT
FINAL SAFETY
ANALYSIS REPORT**

Secondary Containment Typical
Vertical Penetration Through
Floor Requiring Pressure Seal

FIGURE 5.3-2b



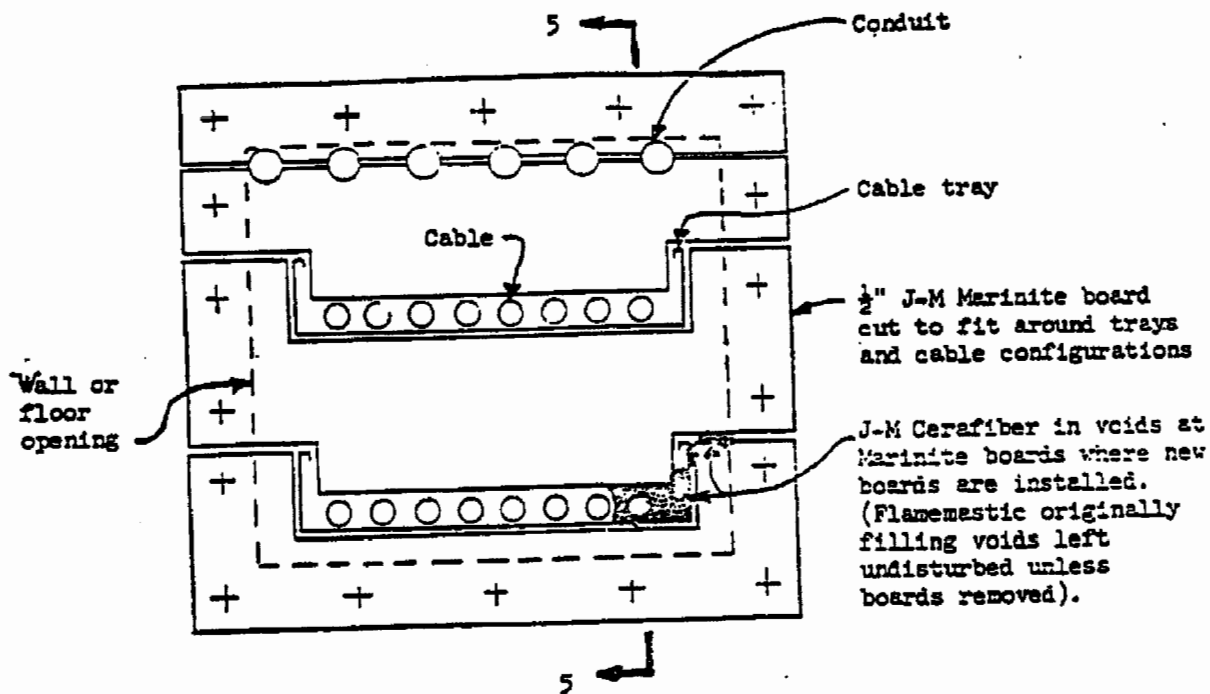
SIDE VIEW OF HORIZONTAL PENETRATION THROUGH WALL REQUIRING PRESSURE SEAL

AMENDMENT 16

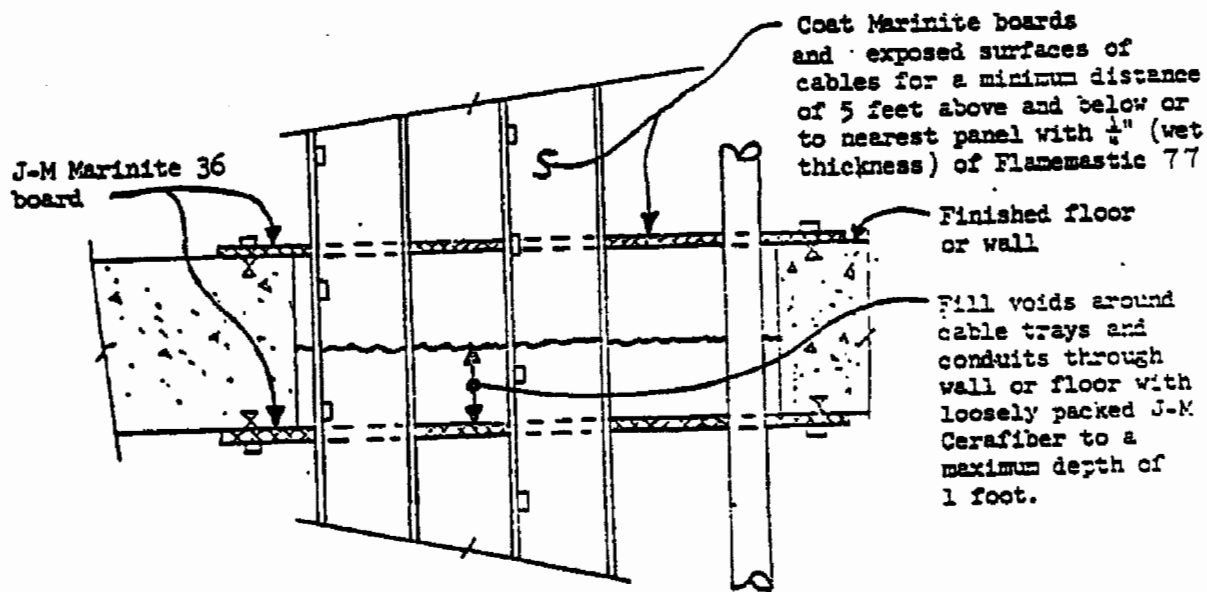
BROWNS FERRY NUCLEAR PLANT
FINAL SAFETY
ANALYSIS REPORT

Side View of Secondary Containment
Horizontal Penetration Through Wall
Requiring Pressure Seal

FIGURE 5.3-2c



PLAN VIEW



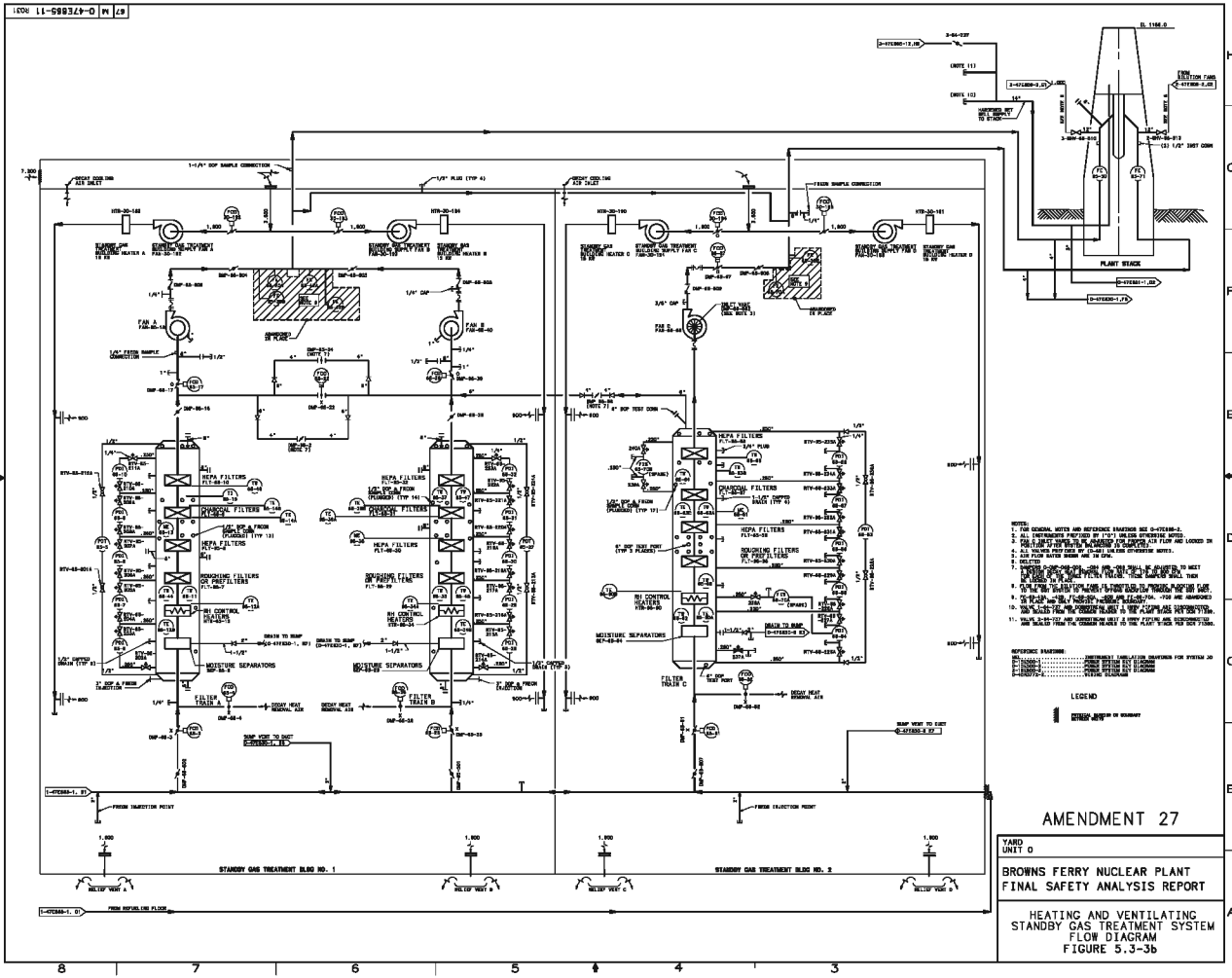
5-5 ELEVATION

AMENDMENT 16

BROWNS FERRY NUCLEAR PLANT
FINAL S.F.E.T.
ANALYSIS REPORT

Secondary Containment Typical
Penetration Through Wall or
Floor Opening Not Requiring a
Pressure Seal

FIGURE 5.3-2d



- NOTES:
1. THE GENERAL NOTE AND REFERENCE FRASINGS ARE 0-10000-1.
 2. ALL INSTRUMENTATION IS PROVIDED BY THE MANUFACTURER'S SPECIFICATIONS.
 3. THE INSTRUMENTATION IS PROVIDED BY THE MANUFACTURER'S SPECIFICATIONS.
 4. THE INSTRUMENTATION IS PROVIDED BY THE MANUFACTURER'S SPECIFICATIONS.
 5. THE INSTRUMENTATION IS PROVIDED BY THE MANUFACTURER'S SPECIFICATIONS.
 6. THE INSTRUMENTATION IS PROVIDED BY THE MANUFACTURER'S SPECIFICATIONS.
 7. THE INSTRUMENTATION IS PROVIDED BY THE MANUFACTURER'S SPECIFICATIONS.
 8. THE INSTRUMENTATION IS PROVIDED BY THE MANUFACTURER'S SPECIFICATIONS.
 9. THE INSTRUMENTATION IS PROVIDED BY THE MANUFACTURER'S SPECIFICATIONS.
 10. THE INSTRUMENTATION IS PROVIDED BY THE MANUFACTURER'S SPECIFICATIONS.
 11. THE INSTRUMENTATION IS PROVIDED BY THE MANUFACTURER'S SPECIFICATIONS.

REFERENCE FRASINGS:

| | | | |
|-----------|-----------|-----------|-----------|
| 0-10000-1 | 0-10000-1 | 0-10000-1 | 0-10000-1 |
| 0-10000-1 | 0-10000-1 | 0-10000-1 | 0-10000-1 |
| 0-10000-1 | 0-10000-1 | 0-10000-1 | 0-10000-1 |
| 0-10000-1 | 0-10000-1 | 0-10000-1 | 0-10000-1 |

LEGEND

STANDBY GAS TREATMENT SYSTEM

AMENDMENT 27

YARD UNIT 0

BROWNS FERRY NUCLEAR PLANT

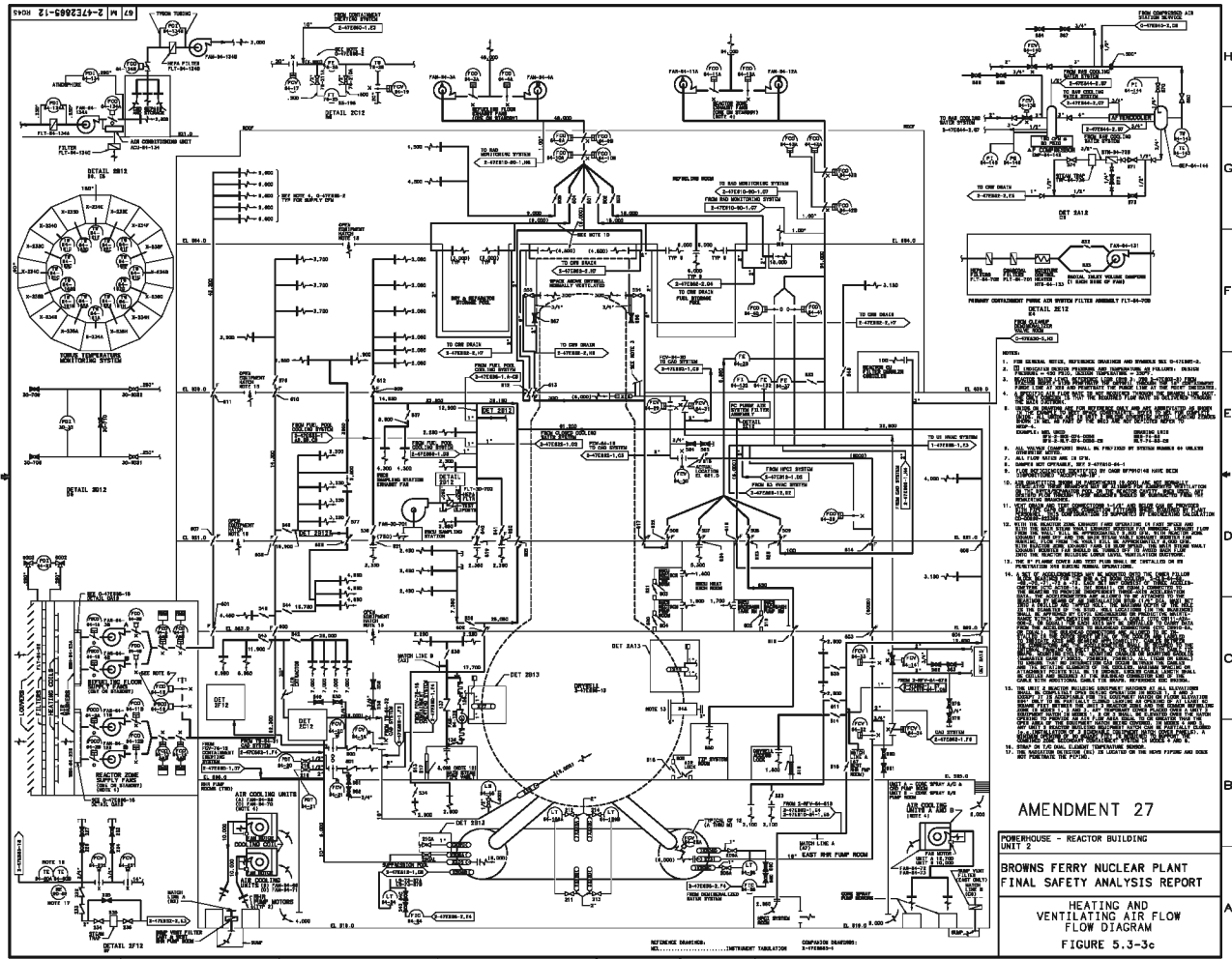
FINAL SAFETY ANALYSIS REPORT

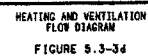
HEATING AND VENTILATING

STANDBY GAS TREATMENT SYSTEM

FLOW DIAGRAM

FIGURE 5.3-3b

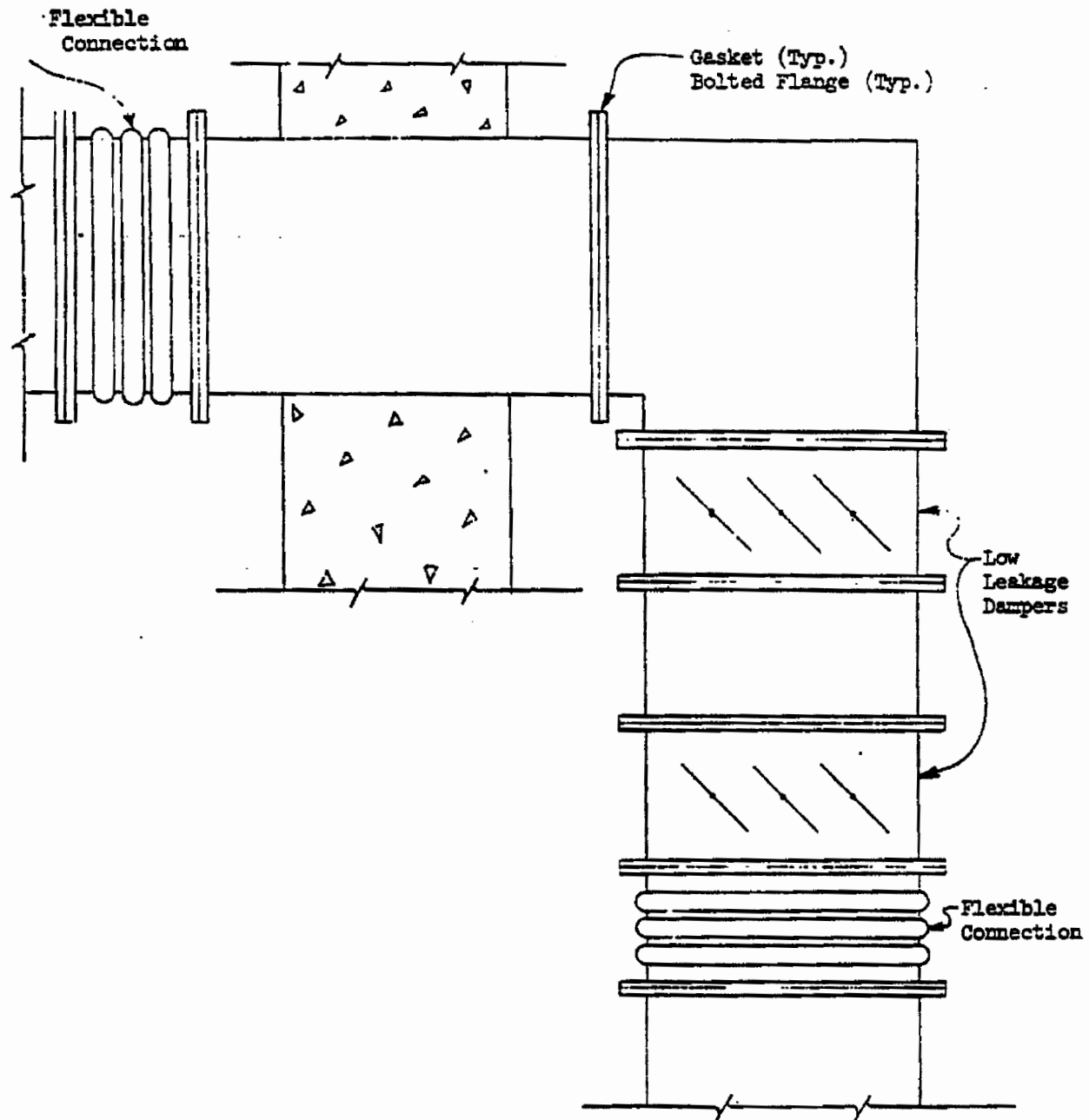




BFN-16

Figure 5.3-4

Deleted by Amendment 9



AMENDMENT 16

BROWNS FERRY NUCLEAR PLANT FINAL SAFETY ANALYSIS REPORT

Secondary Containment Typical
Duct Penetration
Figure 5.3-5

BFN-16

Figures 5.3-6 through 5.3-8

Deleted by Amendment 7.

AMENDMENT 16

**BROWNS FERRY NUCLEAR PLANT
FINAL SAFETY
ANALYSIS REPORT**

BROWNS FERRY PURGE SYSTEM

FIGURE 5.3-10

