

2/10/81

SEISMIC TEST SMB-000/HOEC

TEST REPORT B0045

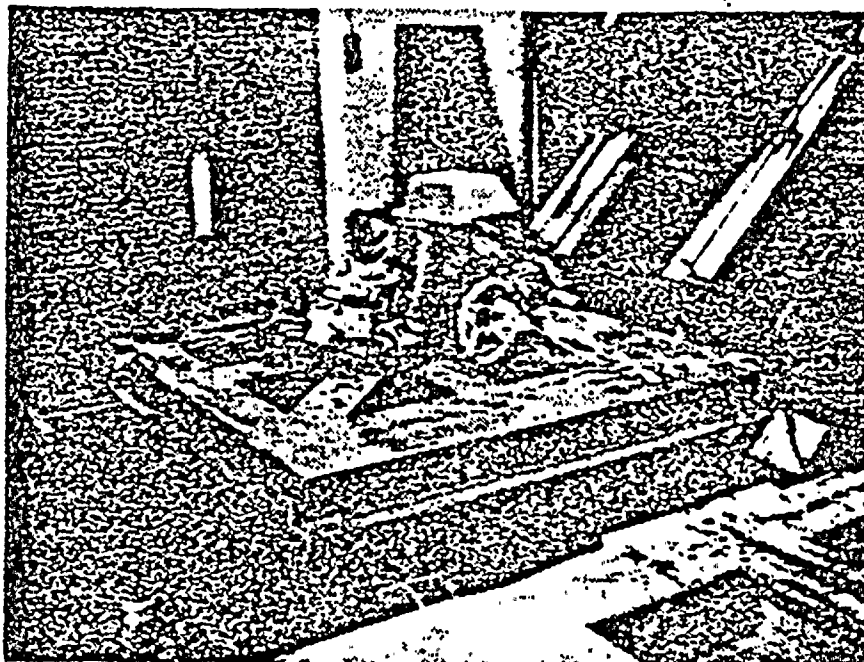
Limitorque Corporation
Research and Development Laboratory
Paul Thomas Young
Assistant Chief Test Engineer

8310130273 830919
PDR ADOCK 05000400
E PDR

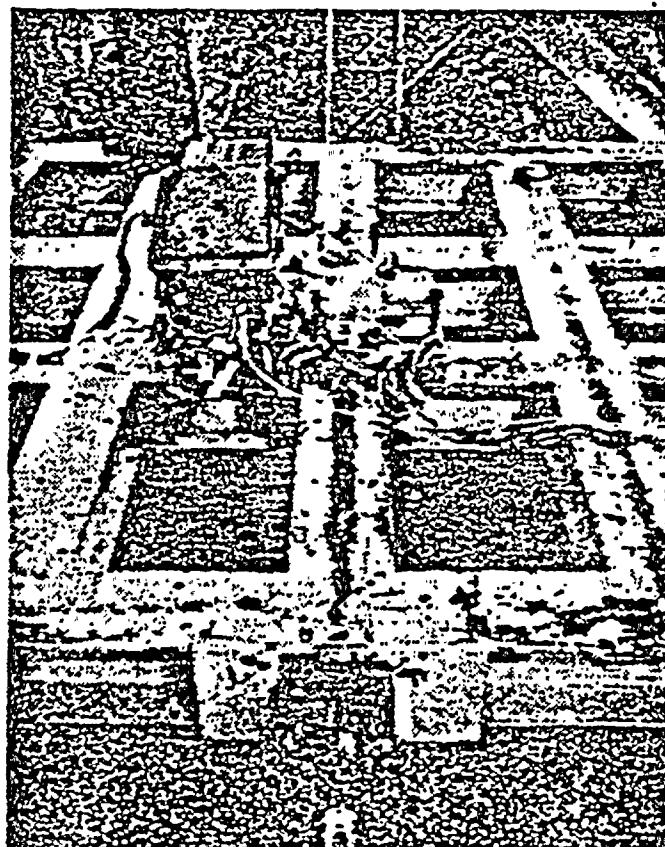


211.51

HYDRAULIC VIBRATION TEST SET-UP ACTION REPORTS #14331-2 & 14331-3

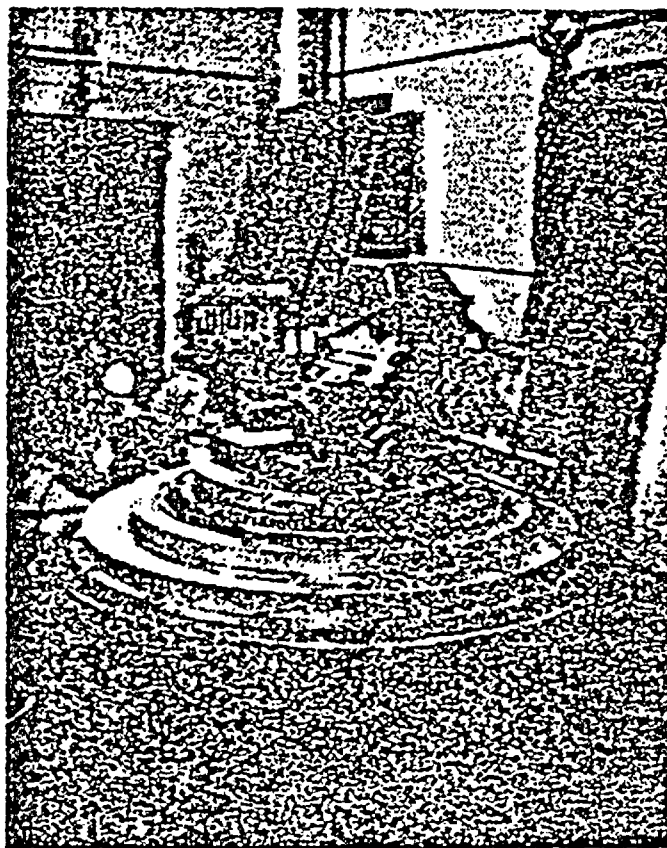


SMB-000-5/HOBC - Vertical Axis



SMB-000-5/HOBC - H1 Axis

ELECTROMAGNETIC VIBRATION TEST SET-UP ACTON REPORTS #14331-2 & 14331-3



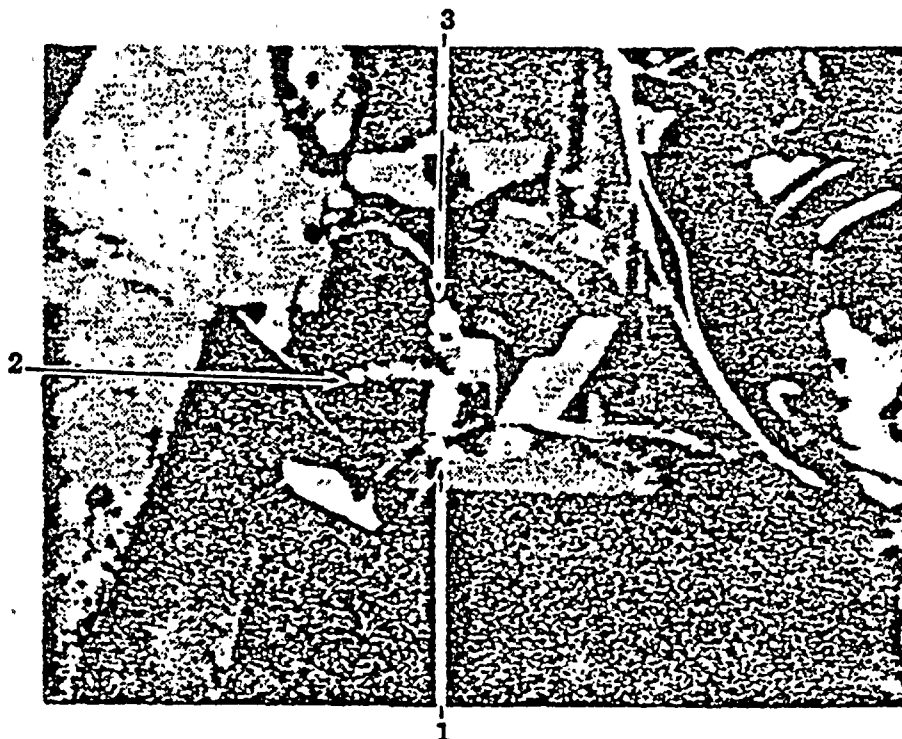
SMB-000-5/HOBC - Vertical Axis



SMB-000-5/HOBC - H1 Axis



ACCELEROMETER LOCATION ACTON REPORTS # 14331-2 & 14331-3

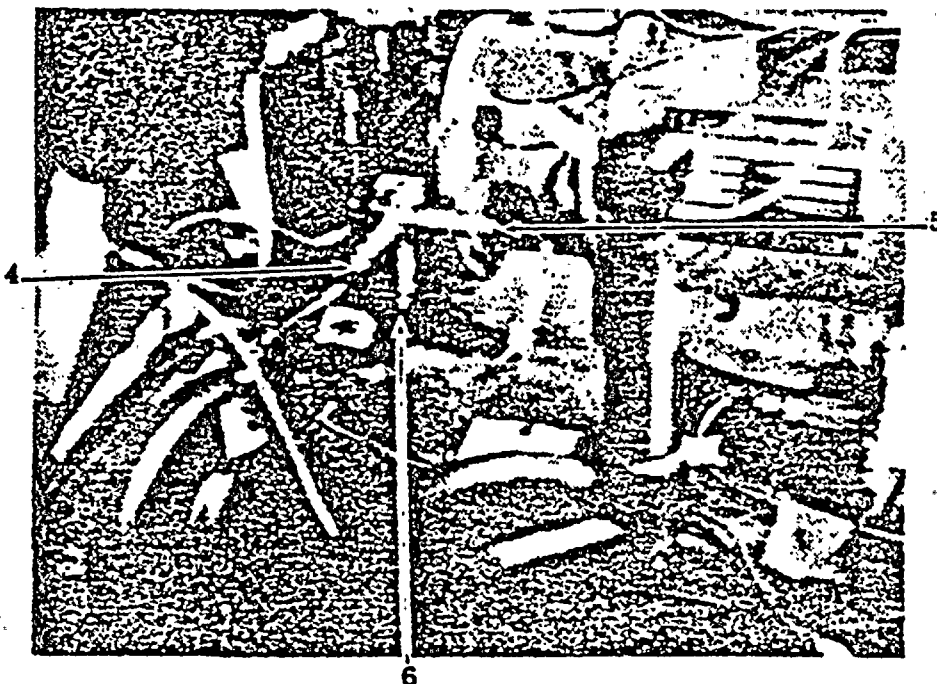


Triaxial Group - Mounted on Motor

NO. 1 - H1 Axis

NO. 2 - H2 Axis

NO. 3 - V Axis

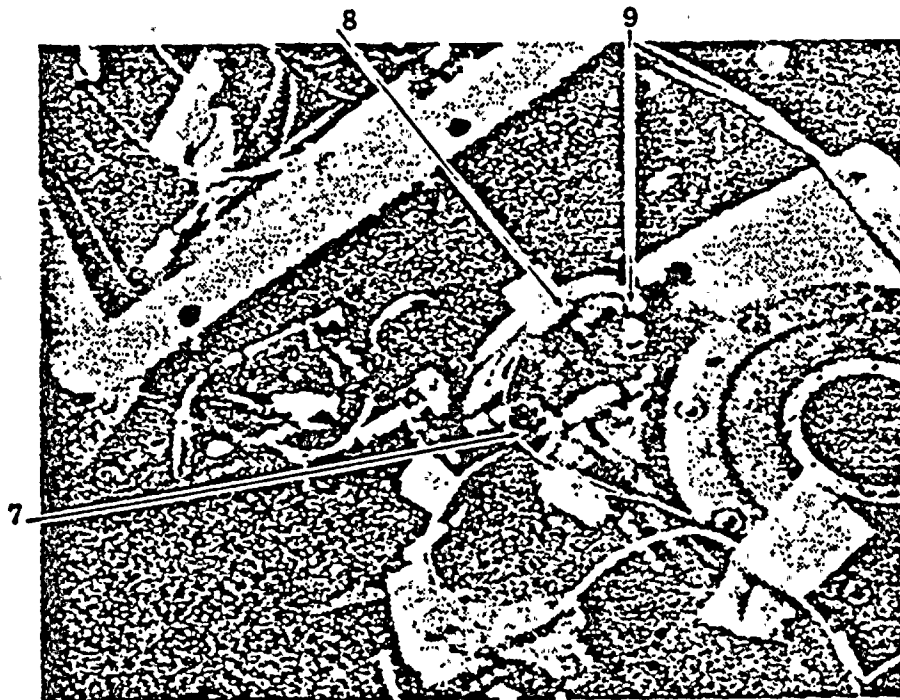


Triaxial Group - SMB 000 Housing at Mounting Flange

NO. 4 - H1 Axis

NO. 5 - H2 Axis

NO. 6 - V Axis



Triaxial Group - HOBC Mounting Adapter

NO. 7 - H1 Axis

NO. 8 - H2 Axis

NO. 9 - V Axis



Triaxial Group - Base of Test Fixture

NO. 10 - H1 Axis

NO. 11 - H2 Axis

NO. 12 - V Axis

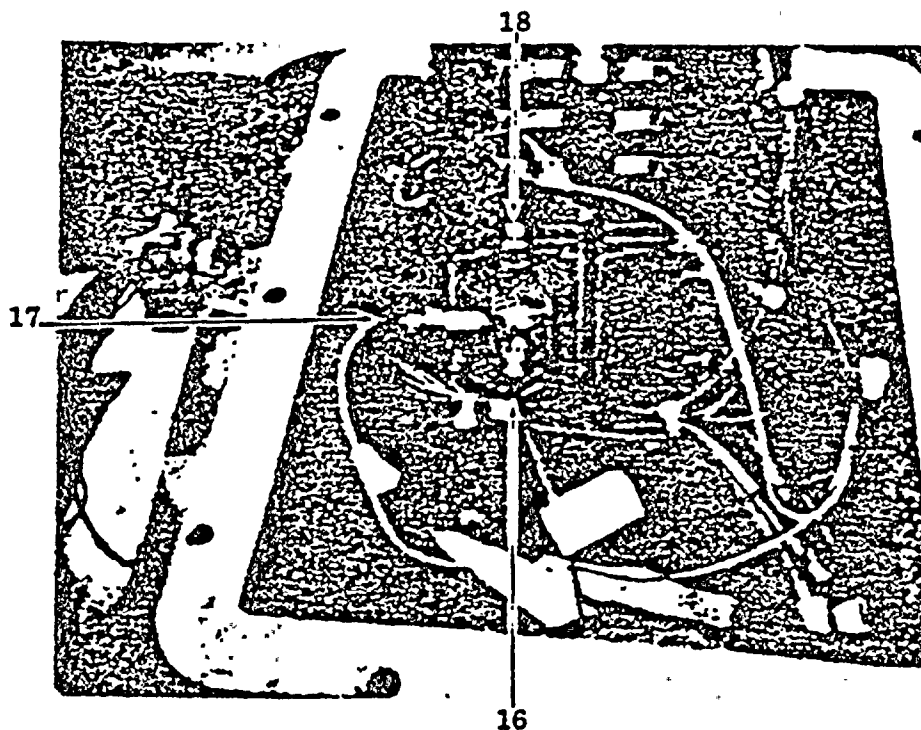


Triaxial Group - Top Corner of SMB 000 Housing

NO. 13 - H1 Axis

NO. 14 - H2 Axis

NO. 15 - V Axis



Triaxial Group - Gear Frame of Gear Limit Switch

NO. 17 - H1 Axis

NO. 18 - H2 Axis

NO. 19 - V Axis