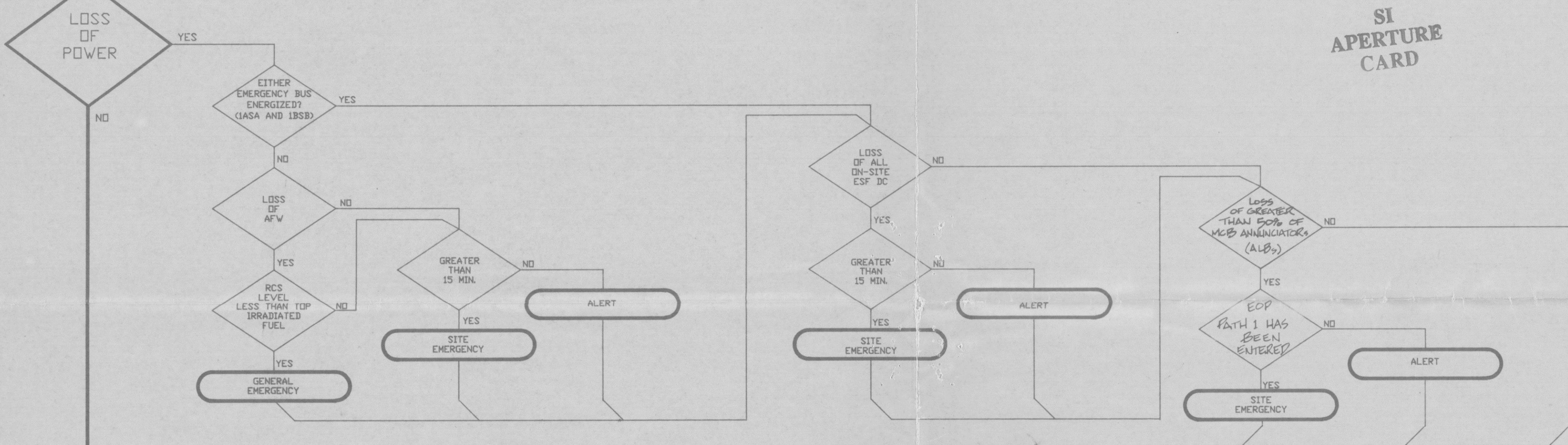
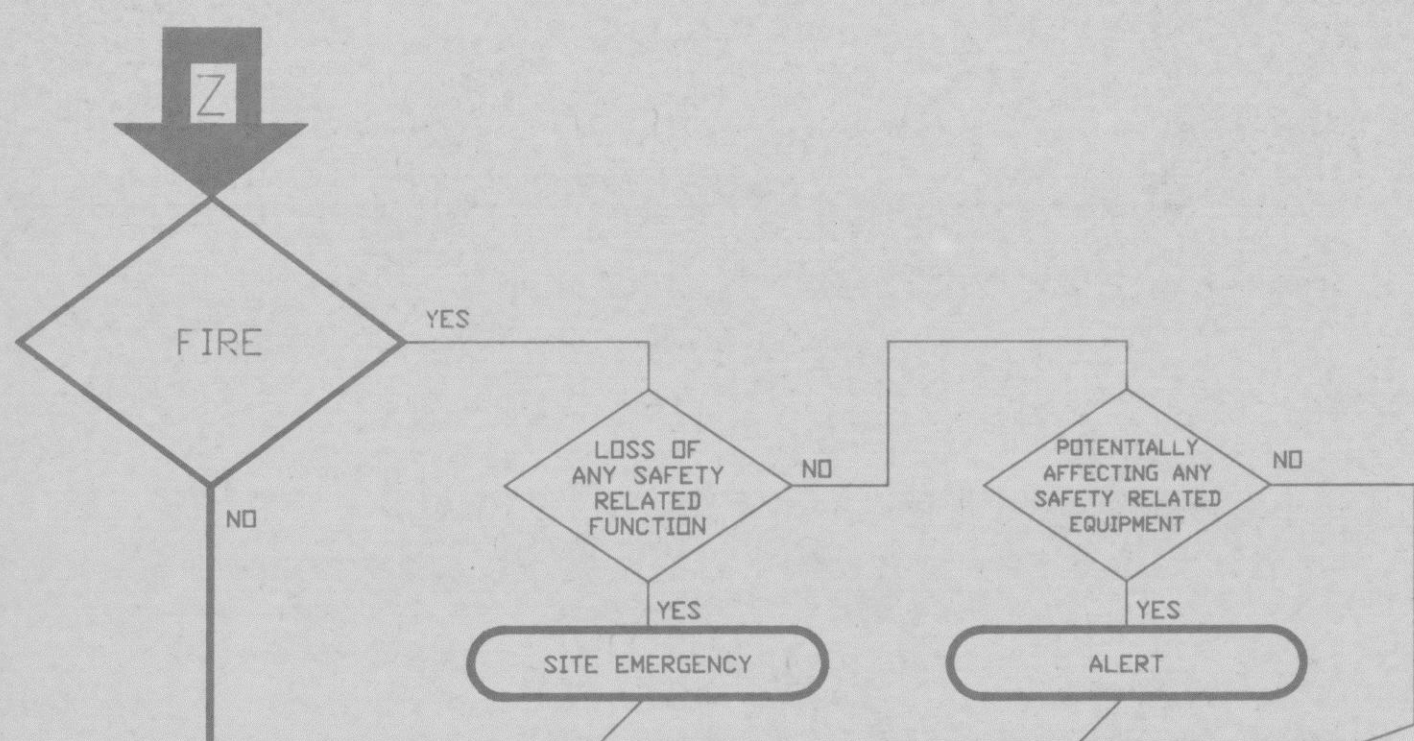
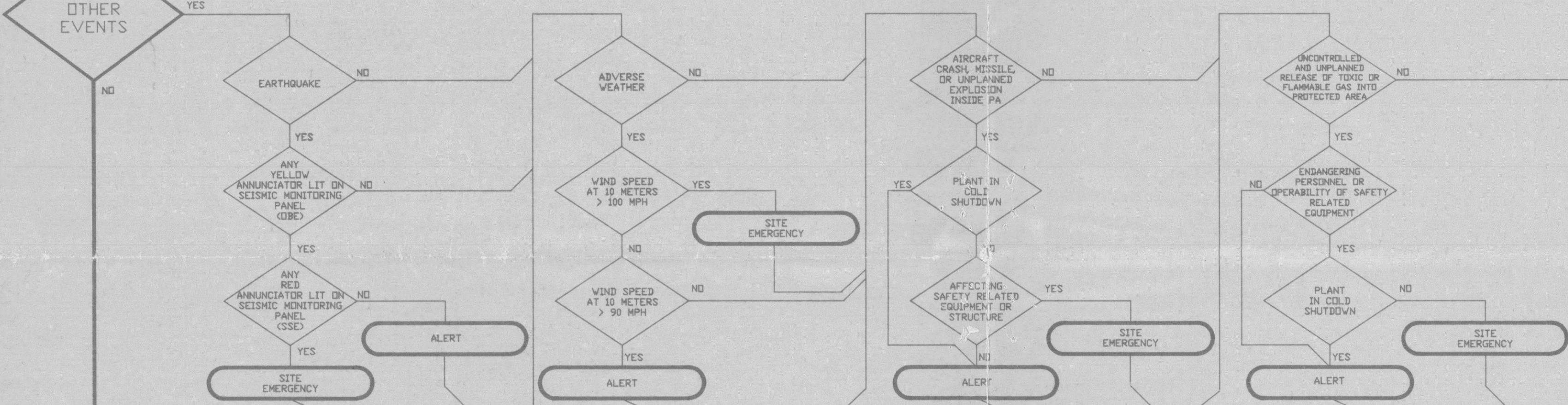
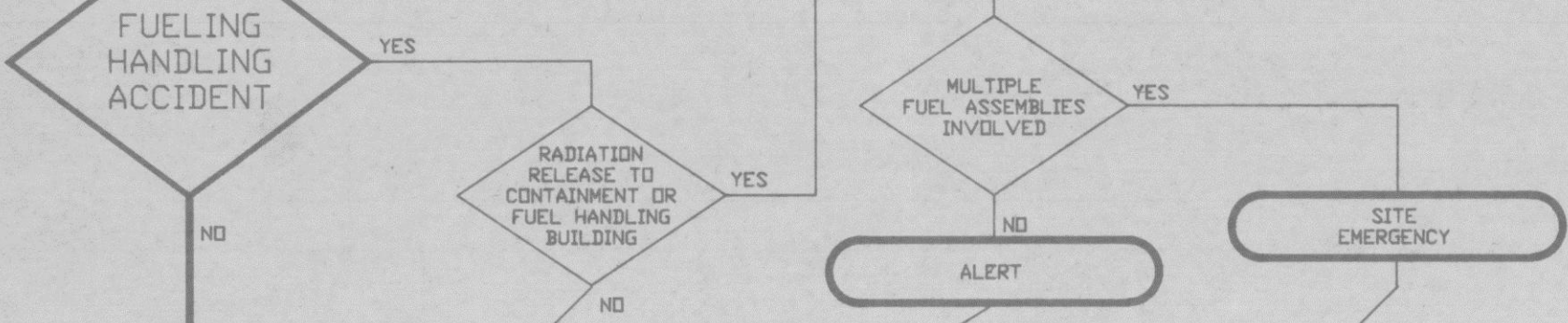
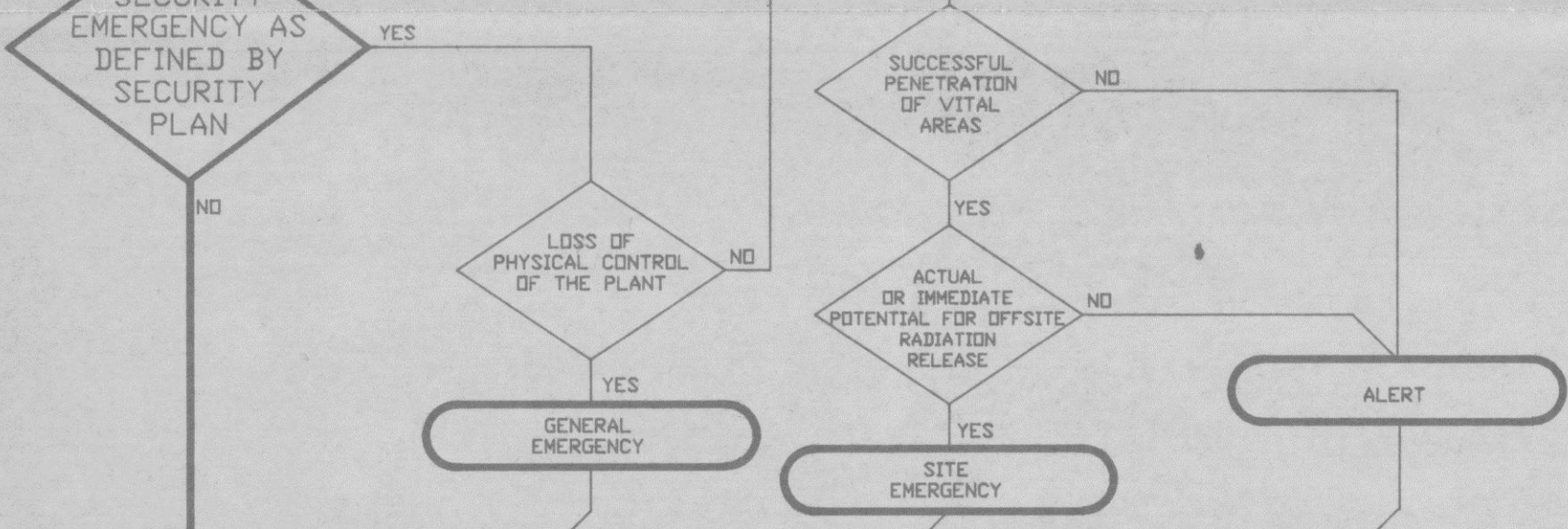
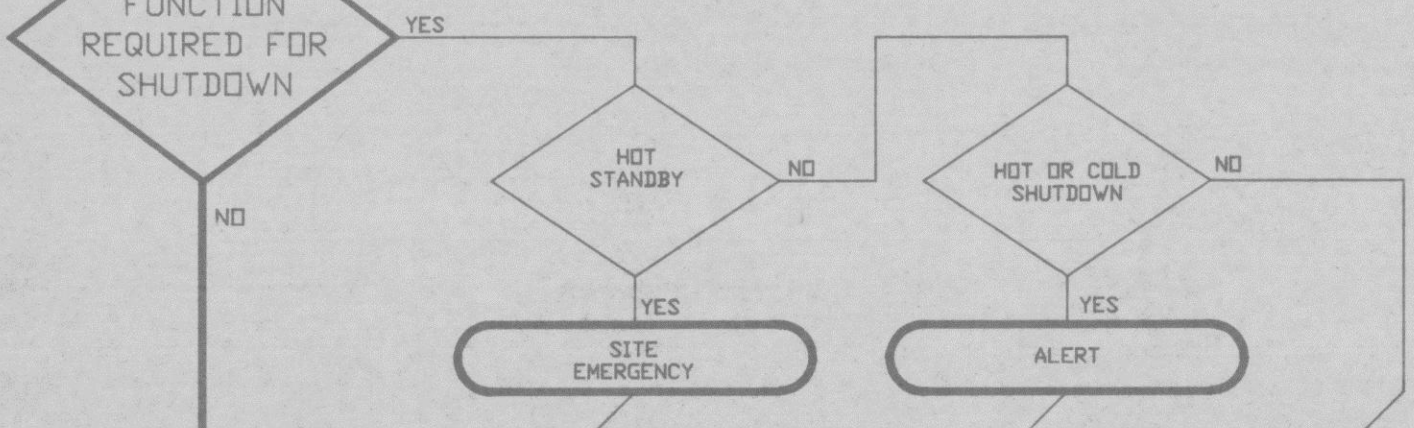
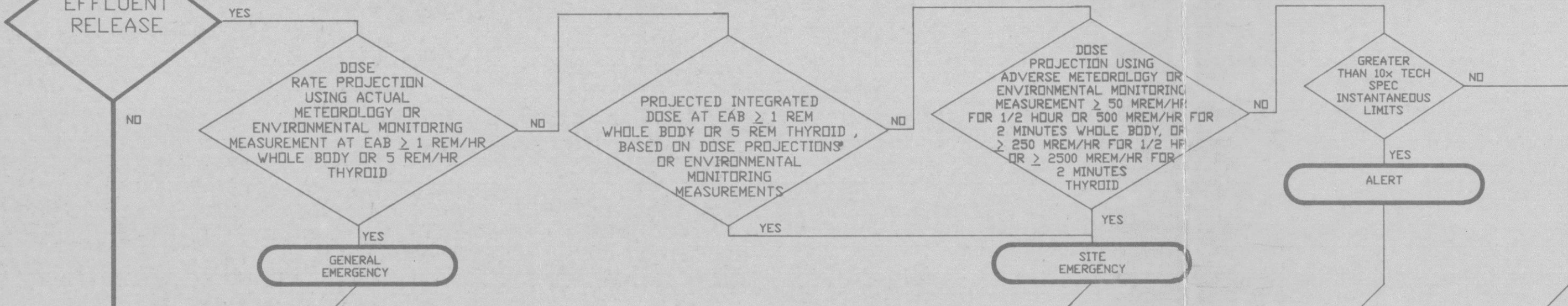


8809160329 E

SI
APERTURE
CARD



AL2/B



FUNCTIONS REQUIRED FOR SHUTDOWN		
	HOT OR COLD S/D	HOT STANDBY
CAPABILITY FOR FW FLOW ≥ 222.5 KPPH	IF RCS PRESS. > 400 PSIG	X
STEAM DUMP OR PROV CAPABILITY	IF RCS PRESS. > 400 PSIG	X
RHR CAPABILITY	X	
CCW CAPABILITY	X	
ESW CAPABILITY	X	X
ON-SITE POWER SUPPLY SYSTEM	X	X
CAPABILITY TO MAINTAIN AMBIENT AIR TEMPERATURE < 120° F (IN REQUIRED EQUIPMENT AREAS)	X	X
CONTROL ROOM PANEL OR AUXILIARY CONTROL PANEL	X	X
NORMAL OR EMERGENCY LIGHTING	X	X
CHARGING CAPABILITY	X	X
STEAM GENERATOR SAFETY VALVES	X	X
BORATION CAPABILITY	X	X
PRESSURIZER HEATERS	X	X
ACCUMULATOR ISOLATION VALVES	X	X

AL2/B

50-400
Silicones Have's
Lte. DTD. 9/8/85
Met 8809140713

