

**Summary of Compressional Wave Velocity, Shear Wave Velocity, and Poisson's Ratio
Based on Source-to-Receiver Travel Time Data - Borehole MP-422**

American Units			
Depth at Midpoint Between Source and Near Receiver	Velocity		Poisson's Ratio
	V _s	V _p	
(ft)	(ft/s)	(ft/s)	
144.3	7580	13760	0.28
145.9	6960	13330	0.31
147.6	6700	13050	0.32
149.2	6560	12410	0.31
150.8	6460	12530	0.32
152.5	6700	12790	0.31
154.1	6840	12660	0.29
155.8	7070	12920	0.29
157.4	7070	12530	0.27
159.0	6960	12790	0.29
160.7	6730	12410	0.29
162.3	6630	12530	0.31
164.0	6460	12920	0.33
165.6	6360	12410	0.32
167.2	6460	12530	0.32
168.9	6770	12790	0.31
170.5	6840	12920	0.30
172.2	6840	13050	0.31
173.8	6960	13330	0.31
175.4	7360	13610	0.29
177.1	7810	13910	0.27
178.7	7860	14390	0.29
180.4	7770	14720	0.31
182.0	8120	15070	0.30
183.6	8270	16230	0.32
185.3	8670	16880	0.32
186.9	9040	17340	0.31
188.6	9240	17340	0.30
190.2	9310	17110	0.29
191.8	9380	17340	0.29
193.5	9450	17110	0.28
195.1	9660	17340	0.27
196.8	9590	17110	0.27
198.4	9450	16660	0.26
200.0	9170	16440	0.27
201.7	8850	16030	0.28
203.3	8550	15830	0.29
205.0	8550	15830	0.29
206.6	8670	15440	0.27
208.2	9040	16230	0.27

Metric Units			
Depth at Midpoint Between Source and Near Receiver	Velocity		Poisson's Ratio
	V _s	V _p	
(m)	(m/s)	(m/s)	
44.0	2310	4190	0.28
44.5	2120	4060	0.31
45.0	2040	3980	0.32
45.5	2000	3780	0.31
46.0	1970	3820	0.32
46.5	2040	3900	0.31
47.0	2090	3860	0.29
47.5	2160	3940	0.29
48.0	2160	3820	0.27
48.5	2120	3900	0.29
49.0	2050	3780	0.29
49.5	2020	3820	0.31
50.0	1970	3940	0.33
50.5	1940	3780	0.32
51.0	1970	3820	0.32
51.5	2060	3900	0.31
52.0	2090	3940	0.30
52.5	2090	3980	0.31
53.0	2120	4060	0.31
53.5	2240	4150	0.29
54.0	2380	4240	0.27
54.5	2400	4380	0.29
55.0	2370	4490	0.31
55.5	2470	4590	0.30
56.0	2520	4950	0.32
56.5	2640	5150	0.32
57.0	2760	5290	0.31
57.5	2820	5290	0.30
58.0	2840	5210	0.29
58.5	2860	5290	0.29
59.0	2880	5210	0.28
59.5	2950	5290	0.27
60.0	2920	5210	0.27
60.5	2880	5080	0.26
61.0	2800	5010	0.27
61.5	2700	4880	0.28
62.0	2610	4820	0.29
62.5	2610	4820	0.29
63.0	2640	4710	0.27
63.5	2760	4950	0.27

**Summary of Compressional Wave Velocity, Shear Wave Velocity, and Poisson's Ratio
Based on Source-to-Receiver Travel Time Data - Borehole MP-422**

American Units				Metric Units			
Depth at Midpoint Between Source and Near Receiver	Velocity		Poisson's Ratio	Depth at Midpoint Between Source and Near Receiver	Velocity		Poisson's Ratio
	V _s	V _p			V _s	V _p	
(ft)	(ft/s)	(ft/s)		(m)	(m/s)	(m/s)	
209.9	9040	16030	0.27	64.0	2760	4880	0.27
211.5	9040	15440	0.24	64.5	2760	4710	0.24
213.2	8670	14550	0.22	65.0	2640	4440	0.22
214.8	8440	14720	0.26	65.5	2570	4490	0.26
216.4	8500	14720	0.25	66.0	2590	4490	0.25
218.1	8670	15830	0.29	66.5	2640	4820	0.29
219.7	8790	15630	0.27	67.0	2680	4760	0.27
221.4	8980	15830	0.26	67.5	2740	4820	0.26
223.0	9040	16030	0.27	68.0	2760	4880	0.27
224.7	9040	15440	0.24	68.5	2760	4710	0.24
226.3	9040	15630	0.25	69.0	2760	4760	0.25
227.9	8920	15070	0.23	69.5	2720	4590	0.23
229.6	8920	14890	0.22	70.0	2720	4540	0.22
231.2	8920	15070	0.23	70.5	2720	4590	0.23
232.9	8980	15070	0.22	71.0	2740	4590	0.22
234.5	9040	14890	0.21	71.5	2760	4540	0.21
236.1	9040	14890	0.21	72.0	2760	4540	0.21
237.8	9040	14720	0.20	72.5	2760	4490	0.20
239.4	8920	14890	0.22	73.0	2720	4540	0.22
241.1	8670	14720	0.23	73.5	2640	4490	0.23
242.7	8670	14720	0.23	74.0	2640	4490	0.23
244.3	8670	14390	0.21	74.5	2640	4380	0.21
246.0	9040	14720	0.20	75.0	2760	4490	0.20
247.6	9240	14890	0.19	75.5	2820	4540	0.19
249.3	9240	14720	0.17	76.0	2820	4490	0.17
250.9	8920	14720	0.21	76.5	2720	4490	0.21
252.5	8120	14390	0.27	77.0	2470	4380	0.27
254.2	7770	14070	0.28	77.5	2370	4290	0.28
255.8	7360	14390	0.32	78.0	2240	4380	0.32
257.5	7490	14550	0.32	78.5	2280	4440	0.32
259.1	7960	14890	0.30	79.0	2430	4540	0.30
260.7	8270	15440	0.30	79.5	2520	4710	0.30
262.4	8610	15830	0.29	80.0	2630	4820	0.29
264.0	9170	16660	0.28	80.5	2800	5080	0.28
265.7	9450	16660	0.26	81.0	2880	5080	0.26
267.3	9660	16230	0.23	81.5	2950	4950	0.23
268.9	9740	16030	0.21	82.0	2970	4880	0.21
270.6	10130	16880	0.22	82.5	3090	5150	0.22
272.2	10210	17110	0.22	83.0	3110	5210	0.22
273.9	9660	16440	0.24	83.5	2950	5010	0.24

**Summary of Compressional Wave Velocity, Shear Wave Velocity, and Poisson's Ratio
Based on Source-to-Receiver Travel Time Data - Borehole MP-422**

American Units			
Depth at Midpoint Between Source and Near Receiver	Velocity		Poisson's Ratio
	V _s	V _p	
(ft)	(ft/s)	(ft/s)	
275.5	9040	16030	0.27
277.1	9040	16230	0.27
278.8	9040	16660	0.29
280.4	9040	16660	0.29
282.1	9380	16660	0.27
283.7	9170	17110	0.30
285.3	9240	16880	0.29
287.0	9310	17110	0.29
288.6	9040	16030	0.27
290.3	8500	15250	0.28
291.9	7770	14890	0.31
293.5	6270	14720	0.39
295.2	7070	15440	0.37
296.8	7190	16230	0.38
298.5	9040	16660	0.29
300.1	9810	17340	0.26
301.8	9660	17110	0.27
303.4	9310	16880	0.28
305.0	9240	16880	0.29
306.7	9170	17110	0.30
308.3	9040	17830	0.33
310.0	9590	18090	0.30
311.6	9660	18350	0.31

Metric Units			
Depth at Midpoint Between Source and Near Receiver	Velocity		Poisson's Ratio
	V _s	V _p	
(m)	(m/s)	(m/s)	
84.0	2760	4880	0.27
84.5	2760	4950	0.27
85.0	2760	5080	0.29
85.5	2760	5080	0.29
86.0	2860	5080	0.27
86.5	2800	5210	0.30
87.0	2820	5150	0.29
87.5	2840	5210	0.29
88.0	2760	4880	0.27
88.5	2590	4650	0.28
89.0	2370	4540	0.31
89.5	1910	4490	0.39
90.0	2160	4710	0.37
90.5	2190	4950	0.38
91.0	2760	5080	0.29
91.5	2990	5290	0.26
92.0	2950	5210	0.27
92.5	2840	5150	0.28
93.0	2820	5150	0.29
93.5	2800	5210	0.30
94.0	2760	5430	0.33
94.5	2920	5510	0.30
95.0	2950	5590	0.31

CLINCH RIVER SMR PROJECT BOREHOLE MP-423 Source to Receiver and Receiver to Receiver Analysis

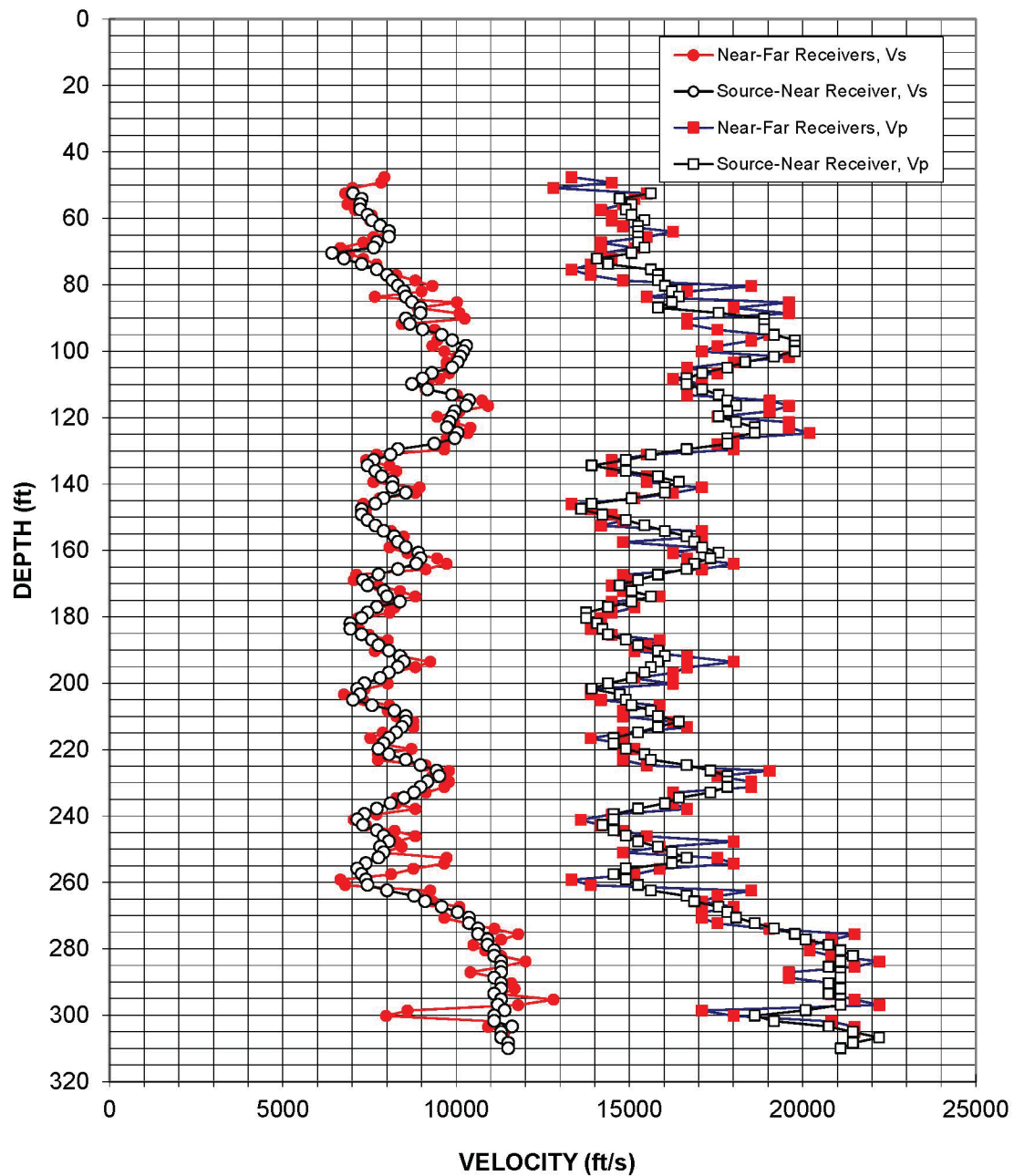


Figure A-26: Boring MP-423, Suspension S-R1 P- and S_H -wave velocities

Table A-26: Boring MP-423, Suspension S-R1 depths and P- and S_H-wave velocities

**Summary of Compressional Wave Velocity, Shear Wave Velocity, and Poisson's Ratio
Based on Source-to-Receiver Travel Time Data - Borehole MP-423**

American Units				Metric Units			
Depth at Midpoint Between Source	Velocity		Poisson's	Depth at Midpoint Between Source	Velocity		Poisson's
	V _s	V _p			V _s	V _p	
(ft)	(ft/s)	(ft/s)		(m)	(m/s)	(m/s)	
52.4	7030	15630	0.37	16.0	2140	4760	0.37
54.0	7280	14720	0.34	16.5	2220	4490	0.34
55.7	7230	15070	0.35	17.0	2210	4590	0.35
57.3	7230	14890	0.35	17.5	2210	4540	0.35
59.0	7450	15070	0.34	18.0	2270	4590	0.34
60.6	7580	15440	0.34	18.5	2310	4710	0.34
62.2	7810	15250	0.32	19.0	2380	4650	0.32
63.9	8060	15250	0.31	19.5	2460	4650	0.31
65.5	8060	15250	0.31	20.0	2460	4650	0.31
67.2	7720	15250	0.33	20.5	2350	4650	0.33
68.8	7630	15440	0.34	21.0	2320	4710	0.34
70.5	6430	15070	0.39	21.5	1960	4590	0.39
72.1	6770	14070	0.35	22.0	2060	4290	0.35
73.7	7280	14390	0.33	22.5	2220	4380	0.33
75.4	7720	15630	0.34	23.0	2350	4760	0.34
77.0	8010	15830	0.33	23.5	2440	4820	0.33
78.7	8170	15830	0.32	24.0	2490	4820	0.32
80.3	8330	16030	0.31	24.5	2540	4880	0.31
81.9	8500	16230	0.31	25.0	2590	4950	0.31
83.6	8550	16440	0.31	25.5	2610	5010	0.31
85.2	8730	16230	0.30	26.0	2660	4950	0.30
86.9	8980	15830	0.26	26.5	2740	4820	0.26
88.5	8980	17580	0.32	27.0	2740	5360	0.32
90.1	8550	18900	0.37	27.5	2610	5760	0.37
91.8	8670	18900	0.37	28.0	2640	5760	0.37
93.4	9040	18900	0.35	28.5	2760	5760	0.35
95.1	9590	19180	0.33	29.0	2920	5850	0.33
96.7	9890	19780	0.33	29.5	3010	6030	0.33
98.3	10290	19780	0.31	30.0	3140	6030	0.31
100.0	10210	19780	0.32	30.5	3110	6030	0.32
101.6	10130	19180	0.31	31.0	3090	5850	0.31
103.3	10050	18350	0.29	31.5	3060	5590	0.29
104.9	9890	17830	0.28	32.0	3010	5430	0.28
106.5	9310	17110	0.29	32.5	2840	5210	0.29
108.2	9040	16660	0.29	33.0	2760	5080	0.29
109.8	8730	16660	0.31	33.5	2660	5080	0.31
111.5	9170	17110	0.30	34.0	2800	5210	0.30
113.1	9890	17580	0.27	34.5	3010	5360	0.27
114.7	10380	17830	0.24	35.0	3160	5430	0.24

**Summary of Compressional Wave Velocity, Shear Wave Velocity, and Poisson's Ratio
Based on Source-to-Receiver Travel Time Data - Borehole MP-423**

American Units				Metric Units			
Depth at Midpoint Between Source (ft)	Velocity		Poisson's	Depth at Midpoint Between Source (m)	Velocity		Poisson's
	V _s (ft/s)	V _p (ft/s)			V _s (m/s)	V _p (m/s)	
116.4	10290	18090	0.26	35.5	3140	5510	0.26
118.0	9970	17830	0.27	36.0	3040	5430	0.27
119.7	9890	17580	0.27	36.5	3010	5360	0.27
121.3	9810	18090	0.29	37.0	2990	5510	0.29
122.9	9740	18620	0.31	37.5	2970	5670	0.31
124.6	10050	18620	0.29	38.0	3060	5670	0.29
126.2	9970	17830	0.27	38.5	3040	5430	0.27
127.9	9380	17830	0.31	39.0	2860	5430	0.31
129.5	8330	16660	0.33	39.5	2540	5080	0.33
131.1	8120	15630	0.32	40.0	2470	4760	0.32
132.8	7630	14890	0.32	40.5	2320	4540	0.32
134.4	7450	13910	0.30	41.0	2270	4240	0.30
136.1	7670	14890	0.32	41.5	2340	4540	0.32
137.7	7860	15830	0.34	42.0	2400	4820	0.34
139.3	8170	16440	0.34	42.5	2490	5010	0.34
141.0	8170	16030	0.32	43.0	2490	4880	0.32
142.6	8550	16030	0.30	43.5	2610	4880	0.30
144.3	7910	15070	0.31	44.0	2410	4590	0.31
145.9	7670	13910	0.28	44.5	2340	4240	0.28
147.6	7280	13610	0.30	45.0	2220	4150	0.30
149.2	7280	14220	0.32	45.5	2220	4340	0.32
150.8	7450	14890	0.33	46.0	2270	4540	0.33
152.5	7670	15440	0.34	46.5	2340	4710	0.34
154.1	7910	16030	0.34	47.0	2410	4880	0.34
155.8	8220	16660	0.34	47.5	2510	5080	0.34
157.4	8330	16880	0.34	48.0	2540	5150	0.34
159.0	8550	17110	0.33	48.5	2610	5210	0.33
160.7	8920	17580	0.33	49.0	2720	5360	0.33
162.3	8980	17340	0.32	49.5	2740	5290	0.32
164.0	8850	16880	0.31	50.0	2700	5150	0.31
165.6	8330	16660	0.33	50.5	2540	5080	0.33
167.2	7770	15830	0.34	51.0	2370	4820	0.34
168.9	7320	15250	0.35	51.5	2230	4650	0.35
170.5	7450	14720	0.33	52.0	2270	4490	0.33
172.2	7910	15070	0.31	52.5	2410	4590	0.31
173.8	8010	15630	0.32	53.0	2440	4760	0.32
175.4	8380	15070	0.28	53.5	2560	4590	0.28
177.1	7720	14390	0.30	54.0	2350	4380	0.30
178.7	7450	13760	0.29	54.5	2270	4190	0.29
180.4	7280	13760	0.31	55.0	2220	4190	0.31
182.0	6960	14070	0.34	55.5	2120	4290	0.34
183.6	6960	14220	0.34	56.0	2120	4340	0.34
185.3	7280	14390	0.33	56.5	2220	4380	0.33

**Summary of Compressional Wave Velocity, Shear Wave Velocity, and Poisson's Ratio
Based on Source-to-Receiver Travel Time Data - Borehole MP-423**

American Units				Metric Units			
Depth at Midpoint Between Source (ft)	Velocity		Poisson's	Depth at Midpoint Between Source (m)	Velocity		Poisson's
	V _s (ft/s)	V _p (ft/s)			V _s (m/s)	V _p (m/s)	
186.9	7580	14890	0.33	57.0	2310	4540	0.33
188.6	7770	15250	0.32	57.5	2370	4650	0.32
190.2	8060	15830	0.32	58.0	2460	4820	0.32
191.8	8380	16030	0.31	58.5	2560	4880	0.31
193.5	8500	15830	0.30	59.0	2590	4820	0.30
195.1	8330	15630	0.30	59.5	2540	4760	0.30
196.8	8060	15440	0.31	60.0	2460	4710	0.31
198.4	7810	15070	0.32	60.5	2380	4590	0.32
200.0	7360	14390	0.32	61.0	2240	4380	0.32
201.7	7150	13910	0.32	61.5	2180	4240	0.32
203.3	7230	14720	0.34	62.0	2210	4490	0.34
205.0	7030	14890	0.36	62.5	2140	4540	0.36
206.6	7580	15070	0.33	63.0	2310	4590	0.33
208.2	8220	15630	0.31	63.5	2510	4760	0.31
209.9	8550	15830	0.29	64.0	2610	4820	0.29
211.5	8550	16440	0.31	64.5	2610	5010	0.31
213.2	8440	15830	0.30	65.0	2570	4820	0.30
214.8	8270	15250	0.29	65.5	2520	4650	0.29
216.4	8060	14550	0.28	66.0	2460	4440	0.28
218.1	7910	14550	0.29	66.5	2410	4440	0.29
219.7	7770	14890	0.31	67.0	2370	4540	0.31
221.4	8060	15440	0.31	67.5	2460	4710	0.31
223.0	8550	15630	0.29	68.0	2610	4760	0.29
224.7	8980	16660	0.30	68.5	2740	5080	0.30
226.3	9450	17340	0.29	69.0	2880	5290	0.29
227.9	9520	17830	0.30	69.5	2900	5430	0.30
229.6	9170	17830	0.32	70.0	2800	5430	0.32
231.2	8980	17830	0.33	70.5	2740	5430	0.33
232.9	8790	17340	0.33	71.0	2680	5290	0.33
234.5	8500	16440	0.32	71.5	2590	5010	0.32
236.1	8120	16030	0.33	72.0	2470	4880	0.33
237.8	7720	15250	0.33	72.5	2350	4650	0.33
239.4	7360	14550	0.33	73.0	2240	4440	0.33
241.1	7150	14550	0.34	73.5	2180	4440	0.34
242.7	7320	14220	0.32	74.0	2230	4340	0.32
244.3	7720	14550	0.30	74.5	2350	4440	0.30
246.0	7910	14890	0.30	75.0	2410	4540	0.30
247.6	8060	15250	0.31	75.5	2460	4650	0.31
249.3	7810	15830	0.34	76.0	2380	4820	0.34
250.9	7910	16230	0.34	76.5	2410	4950	0.34
252.5	7770	16660	0.36	77.0	2370	5080	0.36
254.2	7400	16230	0.37	77.5	2260	4950	0.37
255.8	7150	14890	0.35	78.0	2180	4540	0.35

**Summary of Compressional Wave Velocity, Shear Wave Velocity, and Poisson's Ratio
Based on Source-to-Receiver Travel Time Data - Borehole MP-423**

American Units				Metric Units			
Depth at Midpoint Between Source (ft)	Velocity		Poisson's	Depth at Midpoint Between Source (m)	Velocity		Poisson's
	V _s (ft/s)	V _p (ft/s)			V _s (m/s)	V _p (m/s)	
257.5	7280	14550	0.33	78.5	2220	4440	0.33
259.1	7400	14890	0.34	79.0	2260	4540	0.34
260.7	7450	15250	0.34	79.5	2270	4650	0.34
262.4	8010	15630	0.32	80.0	2440	4760	0.32
264.0	8790	16660	0.31	80.5	2680	5080	0.31
265.7	9110	16880	0.29	81.0	2780	5150	0.29
267.3	9590	17580	0.29	81.5	2920	5360	0.29
268.9	10050	17830	0.27	82.0	3060	5430	0.27
270.6	10380	18090	0.25	82.5	3160	5510	0.25
272.2	10380	18620	0.27	83.0	3160	5670	0.27
273.9	10640	19180	0.28	83.5	3240	5850	0.28
275.5	10640	19780	0.30	84.0	3240	6030	0.30
277.1	10910	20100	0.29	84.5	3330	6130	0.29
278.8	10910	20750	0.31	85.0	3330	6330	0.31
280.4	11110	21100	0.31	85.5	3380	6430	0.31
282.1	11110	21460	0.32	86.0	3380	6540	0.32
283.7	11300	21100	0.30	86.5	3450	6430	0.30
285.3	11300	20750	0.29	87.0	3450	6330	0.29
287.0	11300	21100	0.30	87.5	3450	6430	0.30
288.6	11110	21100	0.31	88.0	3380	6430	0.31
290.3	11300	20750	0.29	88.5	3450	6330	0.29
291.9	11300	21100	0.30	89.0	3450	6430	0.30
293.5	11110	20750	0.30	89.5	3380	6330	0.30
295.2	11300	21100	0.30	90.0	3450	6430	0.30
296.8	11200	21100	0.30	90.5	3410	6430	0.30
298.5	11410	20100	0.26	91.0	3480	6130	0.26
300.1	11110	18620	0.22	91.5	3380	5670	0.22
301.8	11110	19180	0.25	92.0	3380	5850	0.25
303.4	11610	20750	0.27	92.5	3540	6330	0.27
305.0	11300	21460	0.31	93.0	3450	6540	0.31
306.7	11300	22210	0.33	93.5	3450	6770	0.33
308.3	11510	21460	0.30	94.0	3510	6540	0.30
310.0	11510	21100	0.29	94.5	3510	6430	0.29

CLINCH RIVER SMR PROJECT BOREHOLE MP-425 Source to Receiver and Receiver to Receiver Analysis

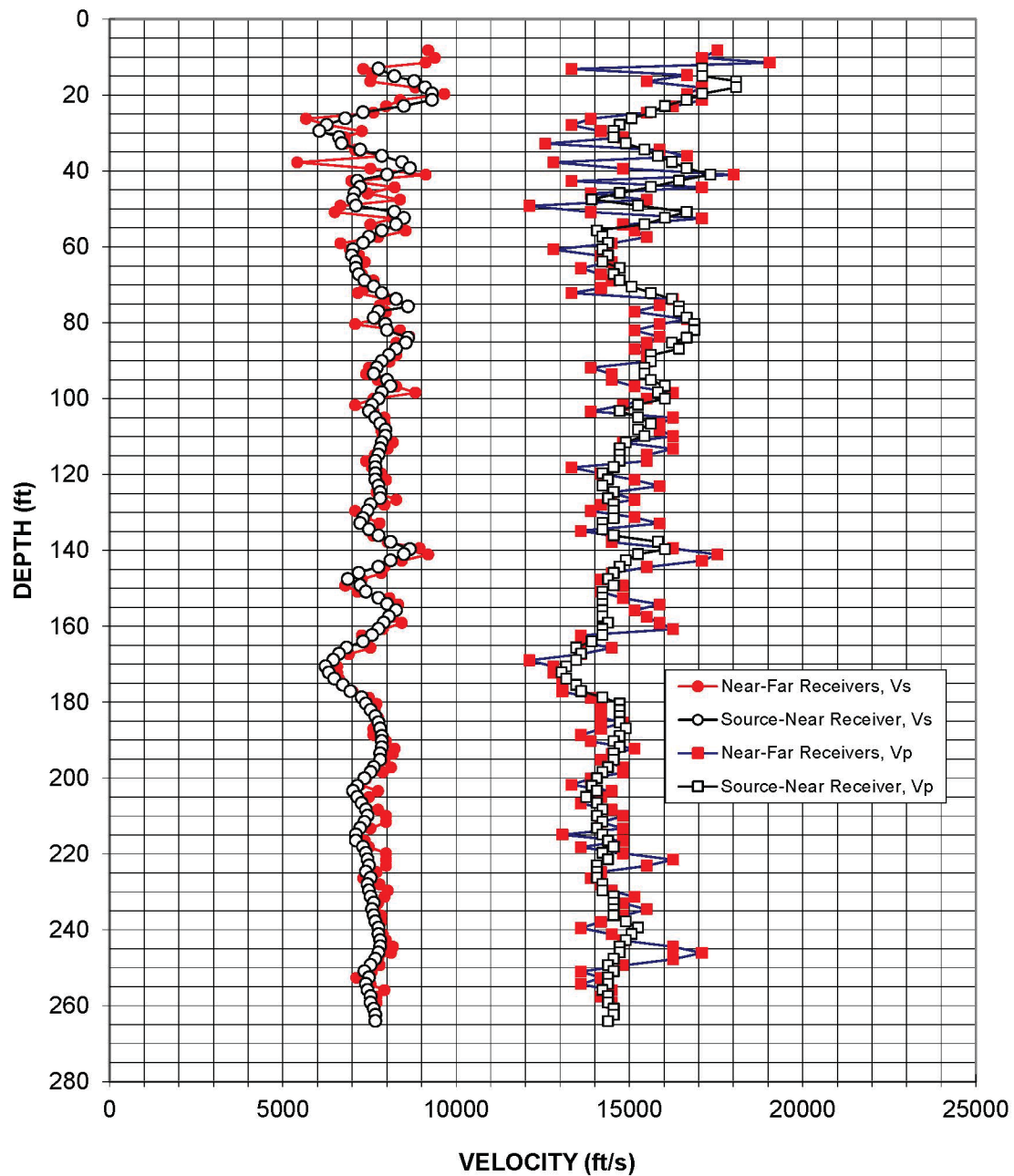


Figure A-27: Boring MP-425, Suspension S-R1 P- and S_H -wave velocities

Table A-27: Boring MP-425, Suspension S-R1 depths and P- and S_H-wave velocities

**Summary of Compressional Wave Velocity, Shear Wave Velocity, and Poisson's Ratio
Based on Source-to-Receiver Travel Time Data - Borehole MP-425**

American Units				Metric Units			
Depth at Midpoint Between Source and Near Receiver	Velocity		Poisson's Ratio	Depth at Midpoint Between Source and Near Receiver	Velocity		Poisson's Ratio
	V _s	V _p			V _s	V _p	
(ft)	(ft/s)	(ft/s)		(m)	(m/s)	(m/s)	
13.0	7770	17110	0.37	4.0	2370	5210	0.37
15.0	8220	17110	0.35	4.6	2510	5210	0.35
16.3	8790	18090	0.35	5.0	2680	5510	0.35
18.0	9110	18090	0.33	5.5	2780	5510	0.33
19.6	9310	17110	0.29	6.0	2840	5210	0.29
21.2	9310	16660	0.27	6.5	2840	5080	0.27
22.9	8500	16030	0.30	7.0	2590	4880	0.30
24.5	7320	15630	0.36	7.5	2230	4760	0.36
26.2	6810	15070	0.37	8.0	2070	4590	0.37
27.8	6270	14720	0.39	8.5	1910	4490	0.39
29.4	6060	14550	0.40	9.0	1850	4440	0.40
31.1	6630	14550	0.37	9.5	2020	4440	0.37
32.7	6700	14890	0.37	10.0	2040	4540	0.37
34.4	7230	15440	0.36	10.5	2210	4710	0.36
36.0	7860	15830	0.34	11.0	2400	4820	0.34
37.6	8440	16230	0.31	11.5	2570	4950	0.31
39.3	8670	16660	0.31	12.0	2640	5080	0.31
40.9	8010	17340	0.36	12.5	2440	5290	0.36
42.6	7150	16440	0.38	13.0	2180	5010	0.38
44.2	7230	15630	0.36	13.5	2210	4760	0.36
45.8	7070	14720	0.35	14.0	2160	4490	0.35
47.5	7030	13910	0.33	14.5	2140	4240	0.33
49.1	7110	15250	0.36	15.0	2170	4650	0.36
50.8	8220	16660	0.34	15.5	2510	5080	0.34
52.4	8500	16030	0.30	16.0	2590	4880	0.30
54.0	8270	15440	0.30	16.5	2520	4710	0.30
55.7	7860	14070	0.27	17.0	2400	4290	0.27
57.3	7490	14220	0.31	17.5	2280	4340	0.31
59.0	7320	14390	0.33	18.0	2230	4380	0.33
60.6	7030	14220	0.34	18.5	2140	4340	0.34
62.2	6990	14390	0.35	19.0	2130	4380	0.35
63.9	7110	14220	0.33	19.5	2170	4340	0.33
65.5	7110	14720	0.35	20.0	2170	4490	0.35
67.2	7190	14550	0.34	20.5	2190	4440	0.34
68.8	7360	14720	0.33	21.0	2240	4490	0.33
70.5	7630	15070	0.33	21.5	2320	4590	0.33
72.1	7860	15630	0.33	22.0	2400	4760	0.33

**Summary of Compressional Wave Velocity, Shear Wave Velocity, and Poisson's Ratio
Based on Source-to-Receiver Travel Time Data - Borehole MP-425**

American Units				Metric Units			
Depth at Midpoint Between Source and Near Receiver	Velocity		Poisson's Ratio	Depth at Midpoint Between Source and Near Receiver	Velocity		Poisson's Ratio
	V _s	V _p			V _s	V _p	
(ft)	(ft/s)	(ft/s)		(m)	(m/s)	(m/s)	
73.7	8270	16230	0.32	22.5	2520	4950	0.32
75.7	8610	16440	0.31	23.1	2630	5010	0.31
77.0	7770	16440	0.36	23.5	2370	5010	0.36
78.7	7630	16660	0.37	24.0	2320	5080	0.37
80.3	7960	16880	0.36	24.5	2430	5150	0.36
81.9	8010	16880	0.35	25.0	2440	5150	0.35
83.9	8610	16660	0.32	25.6	2630	5080	0.32
85.2	8550	16230	0.31	26.0	2610	4950	0.31
86.9	8270	16440	0.33	26.5	2520	5010	0.33
88.5	8060	15630	0.32	27.0	2460	4760	0.32
90.1	7860	15630	0.33	27.5	2400	4760	0.33
91.8	7720	15440	0.33	28.0	2350	4710	0.33
93.4	7630	15440	0.34	28.5	2320	4710	0.34
95.1	8010	15630	0.32	29.0	2440	4760	0.32
96.7	8120	16030	0.33	29.5	2470	4880	0.33
98.3	7860	15830	0.34	30.0	2400	4820	0.34
100.0	7770	16030	0.35	30.5	2370	4880	0.35
101.6	7580	15250	0.34	31.0	2310	4650	0.34
103.3	7490	14720	0.33	31.5	2280	4490	0.33
104.9	7670	15250	0.33	32.0	2340	4650	0.33
106.5	7810	15630	0.33	32.5	2380	4760	0.33
108.2	7960	15250	0.31	33.0	2430	4650	0.31
109.8	7960	15440	0.32	33.5	2430	4710	0.32
111.5	7860	14890	0.31	34.0	2400	4540	0.31
113.1	7810	14720	0.30	34.5	2380	4490	0.30
114.7	7770	14720	0.31	35.0	2370	4490	0.31
116.4	7670	14720	0.31	35.5	2340	4490	0.31
118.0	7670	14550	0.31	36.0	2340	4440	0.31
119.7	7670	14220	0.29	36.5	2340	4340	0.29
121.3	7670	14390	0.30	37.0	2340	4380	0.30
122.9	7770	14220	0.29	37.5	2370	4340	0.29
124.6	7810	14550	0.30	38.0	2380	4440	0.30
126.2	7810	14390	0.29	38.5	2380	4380	0.29
127.9	7540	14550	0.32	39.0	2300	4440	0.32
129.5	7450	14550	0.32	39.5	2270	4440	0.32
131.5	7320	14550	0.33	40.1	2230	4440	0.33
132.8	7230	14220	0.33	40.5	2210	4340	0.33
134.4	7490	14220	0.31	41.0	2280	4340	0.31
136.1	7770	14550	0.30	41.5	2370	4440	0.30
137.7	8120	15830	0.32	42.0	2470	4820	0.32

**Summary of Compressional Wave Velocity, Shear Wave Velocity, and Poisson's Ratio
Based on Source-to-Receiver Travel Time Data - Borehole MP-425**

American Units				Metric Units			
Depth at Midpoint Between Source and Near Receiver	Velocity		Poisson's Ratio	Depth at Midpoint Between Source and Near Receiver	Velocity		Poisson's Ratio
	V _s	V _p			V _s	V _p	
(ft)	(ft/s)	(ft/s)		(m)	(m/s)	(m/s)	
139.7	8670	16030	0.29	42.6	2640	4880	0.29
141.0	8500	15250	0.28	43.0	2590	4650	0.28
142.6	8120	14890	0.29	43.5	2470	4540	0.29
144.3	7770	14720	0.31	44.0	2370	4490	0.31
145.9	7190	14550	0.34	44.5	2190	4440	0.34
147.6	6880	14390	0.35	45.0	2100	4380	0.35
149.2	7230	14550	0.34	45.5	2210	4440	0.34
150.8	7400	14220	0.31	46.0	2260	4340	0.31
152.5	7770	14220	0.29	46.5	2370	4340	0.29
154.1	8010	14220	0.27	47.0	2440	4340	0.27
155.8	8270	14220	0.24	47.5	2520	4340	0.24
157.4	8060	14220	0.26	48.0	2460	4340	0.26
159.0	7910	14390	0.28	48.5	2410	4380	0.28
160.7	7770	14220	0.29	49.0	2370	4340	0.29
162.3	7580	14220	0.30	49.5	2310	4340	0.30
164.0	7320	13910	0.31	50.0	2230	4240	0.31
165.6	6840	13470	0.33	50.5	2090	4110	0.33
167.2	6630	13610	0.34	51.0	2020	4150	0.34
168.9	6460	13470	0.35	51.5	1970	4110	0.35
170.5	6240	13190	0.36	52.0	1900	4020	0.36
172.2	6330	13050	0.35	52.5	1930	3980	0.35
173.8	6490	13190	0.34	53.0	1980	4020	0.34
175.4	6730	13470	0.33	53.5	2050	4110	0.33
177.1	6960	13610	0.32	54.0	2120	4150	0.32
178.7	7280	14220	0.32	54.5	2220	4340	0.32
180.4	7400	14720	0.33	55.0	2260	4490	0.33
182.0	7540	14720	0.32	55.5	2300	4490	0.32
183.6	7670	14720	0.31	56.0	2340	4490	0.31
185.3	7770	14720	0.31	56.5	2370	4490	0.31
186.9	7810	14890	0.31	57.0	2380	4540	0.31
188.9	7860	14720	0.30	57.6	2400	4490	0.30
190.2	7860	14550	0.29	58.0	2400	4440	0.29
191.8	7860	14720	0.30	58.5	2400	4490	0.30
193.5	7810	14550	0.30	59.0	2380	4440	0.30
195.1	7810	14550	0.30	59.5	2380	4440	0.30
197.1	7630	14390	0.30	60.1	2320	4380	0.30
198.4	7540	14220	0.30	60.5	2300	4340	0.30
200.0	7360	14070	0.31	61.0	2240	4290	0.31
202.0	7150	13910	0.32	61.6	2180	4240	0.32
203.3	7030	14070	0.33	62.0	2140	4290	0.33

**Summary of Compressional Wave Velocity, Shear Wave Velocity, and Poisson's Ratio
Based on Source-to-Receiver Travel Time Data - Borehole MP-425**

American Units				Metric Units			
Depth at Midpoint Between Source and Near Receiver	Velocity		Poisson's Ratio	Depth at Midpoint Between Source and Near Receiver	Velocity		Poisson's Ratio
	V _s	V _p			V _s	V _p	
(ft)	(ft/s)	(ft/s)		(m)	(m/s)	(m/s)	
205.0	7150	13760	0.31	62.5	2180	4190	0.31
206.6	7280	14070	0.32	63.0	2220	4290	0.32
208.2	7400	14220	0.31	63.5	2260	4340	0.31
209.9	7450	14070	0.31	64.0	2270	4290	0.31
211.5	7360	14220	0.32	64.5	2240	4340	0.32
213.2	7230	14070	0.32	65.0	2210	4290	0.32
214.8	7110	14220	0.33	65.5	2170	4340	0.33
216.4	7110	14390	0.34	66.0	2170	4380	0.34
218.1	7320	14550	0.33	66.5	2230	4440	0.33
219.7	7400	14220	0.31	67.0	2260	4340	0.31
221.4	7450	14390	0.32	67.5	2270	4380	0.32
223.0	7490	14070	0.30	68.0	2280	4290	0.30
224.7	7400	14070	0.31	68.5	2260	4290	0.31
226.3	7540	14070	0.30	69.0	2300	4290	0.30
227.9	7450	14220	0.31	69.5	2270	4340	0.31
229.6	7490	14220	0.31	70.0	2280	4340	0.31
231.2	7540	14550	0.32	70.5	2300	4440	0.32
232.9	7630	14550	0.31	71.0	2320	4440	0.31
234.5	7580	14550	0.31	71.5	2310	4440	0.31
236.1	7630	14550	0.31	72.0	2320	4440	0.31
237.8	7670	14890	0.32	72.5	2340	4540	0.32
239.4	7770	15250	0.32	73.0	2370	4650	0.32
241.1	7770	15070	0.32	73.5	2370	4590	0.32
242.7	7810	14890	0.31	74.0	2380	4540	0.31
244.3	7810	14720	0.30	74.5	2380	4490	0.30
246.0	7770	14720	0.31	75.0	2370	4490	0.31
247.6	7670	14550	0.31	75.5	2340	4440	0.31
249.3	7540	14390	0.31	76.0	2300	4380	0.31
250.9	7360	14550	0.33	76.5	2240	4440	0.33
252.5	7490	14390	0.31	77.0	2280	4380	0.31
254.2	7400	14390	0.32	77.5	2260	4380	0.32
255.8	7450	14220	0.31	78.0	2270	4340	0.31
257.5	7540	14390	0.31	78.5	2300	4380	0.31
259.1	7540	14390	0.31	79.0	2300	4380	0.31
260.7	7630	14550	0.31	79.5	2320	4440	0.31
262.4	7670	14550	0.31	80.0	2340	4440	0.31
264.0	7670	14390	0.30	80.5	2340	4380	0.30

CLINCH RIVER SMR PROJECT BOREHOLE MP-426 Source to Receiver and Receiver to Receiver Analysis

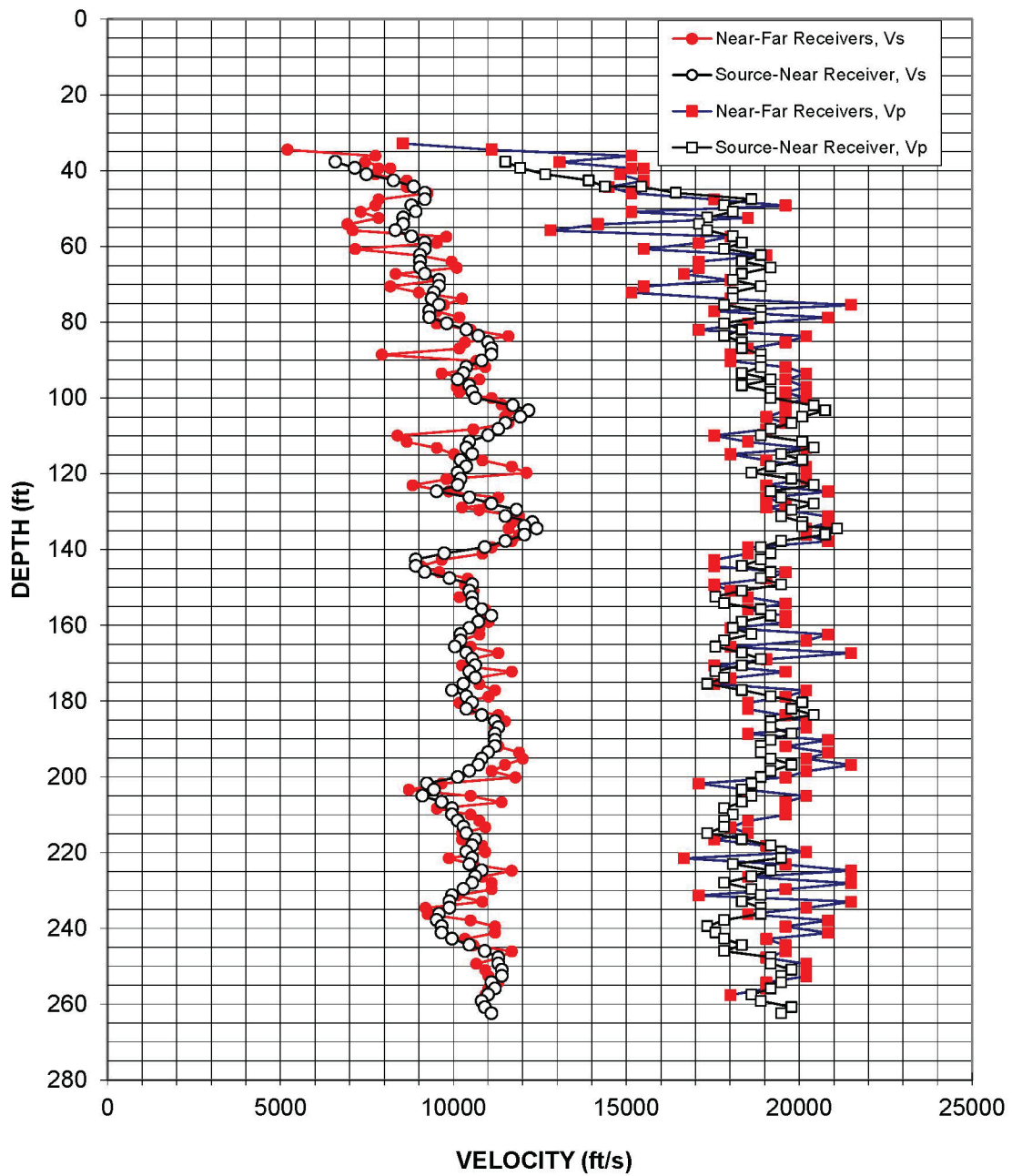


Figure A-28: Boring MP-426, Suspension S-R1 P- and S_H -wave velocities

Table A-28: Boring MP-426, Suspension S-R1 depths and P- and S_H-wave velocities

**Summary of Compressional Wave Velocity, Shear Wave Velocity, and Poisson's Ratio
Based on Source-to-Receiver Travel Time Data - Borehole MP-426**

American Units				Metric Units			
Depth at Midpoint Between Source and Near Receiver	Velocity		Poisson's Ratio	Depth at Midpoint Between Source and Near Receiver	Velocity		Poisson's Ratio
	V _s	V _p			V _s	V _p	
(ft)	(ft/s)	(ft/s)		(m)	(m/s)	(m/s)	
37.6	6590	11510	0.26	11.5	2010	3510	0.26
39.3	7150	11940	0.22	12.0	2180	3640	0.22
40.9	7490	12660	0.23	12.5	2280	3860	0.23
42.6	8270	13910	0.23	13.0	2520	4240	0.23
44.2	8850	14390	0.20	13.5	2700	4380	0.20
44.2	8850	15440	0.26	13.5	2700	4710	0.26
45.8	9170	16440	0.27	14.0	2800	5010	0.27
47.5	9170	18620	0.34	14.5	2800	5670	0.34
49.1	8790	17830	0.34	15.0	2680	5430	0.34
50.8	8920	18090	0.34	15.5	2720	5510	0.34
52.4	8550	17340	0.34	16.0	2610	5290	0.34
54.0	8550	17110	0.33	16.5	2610	5210	0.33
55.7	8330	17340	0.35	17.0	2540	5290	0.35
57.3	8790	18090	0.35	17.5	2680	5510	0.35
59.0	9170	18350	0.33	18.0	2800	5590	0.33
60.6	9170	17830	0.32	18.5	2800	5430	0.32
62.2	9040	18900	0.35	19.0	2760	5760	0.35
63.9	9040	18350	0.34	19.5	2760	5590	0.34
65.5	9040	19180	0.36	20.0	2760	5850	0.36
67.2	9170	18350	0.33	20.5	2800	5590	0.33
68.8	9590	18090	0.30	21.0	2920	5510	0.30
70.5	9590	18900	0.33	21.5	2920	5760	0.33
72.1	9450	18090	0.31	22.0	2880	5510	0.31
73.7	9380	18090	0.32	22.5	2860	5510	0.32
75.4	9590	17830	0.30	23.0	2920	5430	0.30
77.0	9310	18900	0.34	23.5	2840	5760	0.34
78.7	9310	18900	0.34	24.0	2840	5760	0.34
80.3	9810	17830	0.28	24.5	2990	5430	0.28
81.9	10380	18350	0.26	25.0	3160	5590	0.26
83.6	10730	17830	0.22	25.5	3270	5430	0.22
85.2	11010	18350	0.22	26.0	3360	5590	0.22
86.9	11110	18350	0.21	26.5	3380	5590	0.21
88.5	11110	18900	0.24	27.0	3380	5760	0.24
90.1	10820	18900	0.26	27.5	3300	5760	0.26
91.8	10380	18900	0.28	28.0	3160	5760	0.28
93.4	10290	18350	0.27	28.5	3140	5590	0.27
95.1	10130	19180	0.31	29.0	3090	5850	0.31

**Summary of Compressional Wave Velocity, Shear Wave Velocity, and Poisson's Ratio
Based on Source-to-Receiver Travel Time Data - Borehole MP-426**

American Units				Metric Units			
Depth at Midpoint Between Source and Near Receiver	Velocity		Poisson's Ratio	Depth at Midpoint Between Source and Near Receiver	Velocity		Poisson's Ratio
	V _s	V _p			V _s	V _p	
(ft)	(ft/s)	(ft/s)		(m)	(m/s)	(m/s)	
96.7	10460	18350	0.26	29.5	3190	5590	0.26
98.3	10550	19180	0.28	30.0	3220	5850	0.28
100.0	10640	19180	0.28	30.5	3240	5850	0.28
101.9	11720	20420	0.25	31.1	3570	6220	0.25
103.3	12170	20750	0.24	31.5	3710	6330	0.24
104.9	11940	20100	0.23	32.0	3640	6130	0.23
106.5	11510	19780	0.24	32.5	3510	6030	0.24
108.2	11300	19180	0.23	33.0	3450	5850	0.23
109.8	11010	18900	0.24	33.5	3360	5760	0.24
111.5	10460	20100	0.31	34.0	3190	6130	0.31
113.1	10380	20420	0.33	34.5	3160	6220	0.33
114.7	10550	19480	0.29	35.0	3220	5940	0.29
116.4	10210	20100	0.33	35.5	3110	6130	0.33
118.0	10380	19180	0.29	36.0	3160	5850	0.29
119.7	10130	18620	0.29	36.5	3090	5670	0.29
121.3	10210	19780	0.32	37.0	3110	6030	0.32
122.9	10130	20420	0.34	37.5	3090	6220	0.34
124.6	9520	19180	0.34	38.0	2900	5850	0.34
126.2	10460	19480	0.30	38.5	3190	5940	0.30
127.9	11110	20420	0.29	39.0	3380	6220	0.29
129.5	11830	19780	0.22	39.5	3610	6030	0.22
131.1	11510	19480	0.23	40.0	3510	5940	0.23
132.8	12290	20100	0.20	40.5	3750	6130	0.20
133.8	12060	20100	0.22	40.8	3680	6130	0.22
134.4	12410	21100	0.24	41.0	3780	6430	0.24
136.1	12060	20750	0.25	41.5	3680	6330	0.25
137.7	11510	19480	0.23	42.0	3510	5940	0.23
139.3	10910	18900	0.25	42.5	3330	5760	0.25
141.0	9740	19180	0.33	43.0	2970	5850	0.33
142.6	8920	18900	0.36	43.5	2720	5760	0.36
144.3	8920	18350	0.35	44.0	2720	5590	0.35
145.9	9170	19180	0.35	44.5	2800	5850	0.35
147.6	9890	18900	0.31	45.0	3010	5760	0.31
149.2	10550	19480	0.29	45.5	3220	5940	0.29
150.8	10460	18350	0.26	46.0	3190	5590	0.26
152.5	10550	17580	0.22	46.5	3220	5360	0.22
154.1	10550	17830	0.23	47.0	3220	5430	0.23
155.8	10820	18900	0.26	47.5	3300	5760	0.26
157.4	11110	19180	0.25	48.0	3380	5850	0.25
159.0	10730	18350	0.24	48.5	3270	5590	0.24

**Summary of Compressional Wave Velocity, Shear Wave Velocity, and Poisson's Ratio
Based on Source-to-Receiver Travel Time Data - Borehole MP-426**

American Units				Metric Units			
Depth at Midpoint Between Source and Near Receiver	Velocity		Poisson's Ratio	Depth at Midpoint Between Source and Near Receiver	Velocity		Poisson's Ratio
	V _s	V _p			V _s	V _p	
(ft)	(ft/s)	(ft/s)		(m)	(m/s)	(m/s)	
160.7	10460	18090	0.25	49.0	3190	5510	0.25
162.3	10210	18620	0.28	49.5	3110	5670	0.28
164.0	10210	17830	0.26	50.0	3110	5430	0.26
165.6	10050	17580	0.26	50.5	3060	5360	0.26
167.2	10380	18350	0.26	51.0	3160	5590	0.26
168.9	10550	18900	0.27	51.5	3220	5760	0.27
170.5	10640	18350	0.25	52.0	3240	5590	0.25
172.2	10460	17580	0.23	52.5	3190	5360	0.23
173.8	10640	17830	0.22	53.0	3240	5430	0.22
175.4	10290	17340	0.23	53.5	3140	5290	0.23
177.1	9970	18350	0.29	54.0	3040	5590	0.29
178.7	10380	19180	0.29	54.5	3160	5850	0.29
180.4	10550	20100	0.31	55.0	3220	6130	0.31
182.0	10380	19780	0.31	55.5	3160	6030	0.31
183.6	10820	20420	0.30	56.0	3300	6220	0.30
185.3	11200	19180	0.24	56.5	3410	5850	0.24
186.9	11300	19180	0.23	57.0	3450	5850	0.23
188.6	11200	19780	0.26	57.5	3410	6030	0.26
190.2	11200	19180	0.24	58.0	3410	5850	0.24
191.8	11200	18900	0.23	58.5	3410	5760	0.23
193.5	11010	18900	0.24	59.0	3360	5760	0.24
195.1	10820	19180	0.27	59.5	3300	5850	0.27
196.8	10730	19780	0.29	60.0	3270	6030	0.29
198.4	10460	19180	0.29	60.5	3190	5850	0.29
200.0	10130	18900	0.30	61.0	3090	5760	0.30
201.7	9240	18620	0.34	61.5	2820	5670	0.34
203.3	9450	18350	0.32	62.0	2880	5590	0.32
205.0	9110	18620	0.34	62.5	2780	5670	0.34
206.6	9660	18350	0.31	63.0	2950	5590	0.31
208.2	9970	17830	0.27	63.5	3040	5430	0.27
209.9	9970	18090	0.28	64.0	3040	5510	0.28
211.5	10130	17830	0.26	64.5	3090	5430	0.26
213.2	10290	17830	0.25	65.0	3140	5430	0.25
214.8	10380	17340	0.22	65.5	3160	5290	0.22
216.4	10640	18350	0.25	66.0	3240	5590	0.25
218.1	10550	19180	0.28	66.5	3220	5850	0.28
219.7	10380	19480	0.30	67.0	3160	5940	0.30
221.4	10550	19480	0.29	67.5	3220	5940	0.29
223.0	10460	18090	0.25	68.0	3190	5510	0.25
224.7	10820	19180	0.27	68.5	3300	5850	0.27


**Summary of Compressional Wave Velocity, Shear Wave Velocity, and Poisson's Ratio
Based on Source-to-Receiver Travel Time Data - Borehole MP-426**

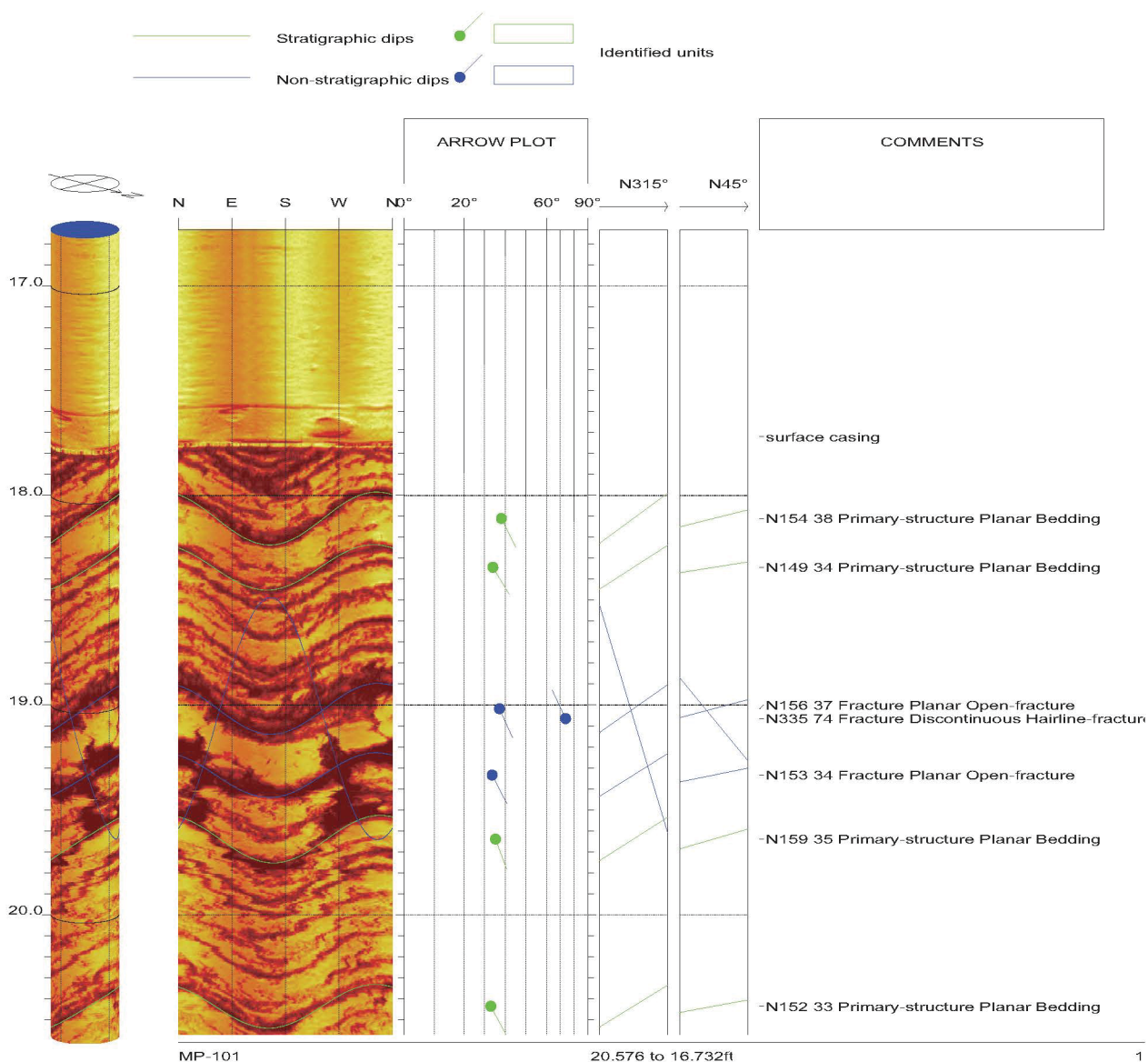
American Units			
Depth at Midpoint Between Source and Near Receiver	Velocity		Poisson's Ratio
	V _s	V _p	
(ft)	(ft/s)	(ft/s)	
226.3	10640	18620	0.26
227.9	10550	17830	0.23
229.6	10290	18620	0.28
231.2	9970	18900	0.31
232.9	9890	18350	0.30
234.5	9890	18900	0.31
236.1	9590	18900	0.33
237.8	9520	17830	0.30
239.4	9660	17340	0.27
241.1	9660	17580	0.28
242.7	9970	17830	0.27
244.3	10460	18350	0.26
246.0	10910	17830	0.20
247.6	11300	19180	0.23
249.3	11300	19180	0.23
250.9	11410	19780	0.25
252.5	11410	19480	0.24
254.2	11110	19480	0.26
255.8	11200	19180	0.24
257.5	11010	18620	0.23
259.1	10820	18900	0.26
260.7	10910	19780	0.28
262.4	11110	19480	0.26

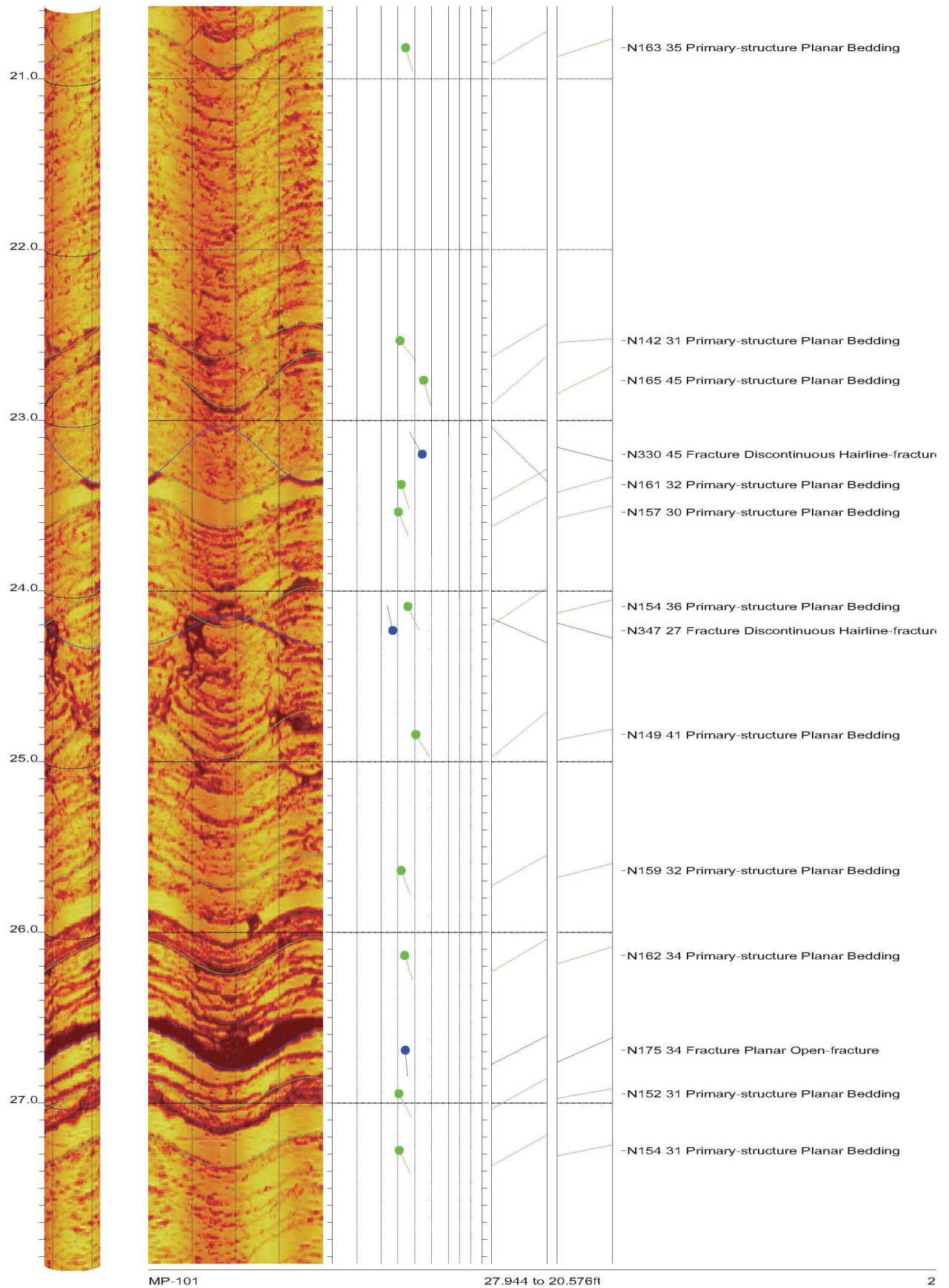
Metric Units			
Depth at Midpoint Between Source and Near Receiver	Velocity		Poisson's Ratio
	V _s	V _p	
(m)	(m/s)	(m/s)	
69.0	3240	5670	0.26
69.5	3220	5430	0.23
70.0	3140	5670	0.28
70.5	3040	5760	0.31
71.0	3010	5590	0.30
71.5	3010	5760	0.31
72.0	2920	5760	0.33
72.5	2900	5430	0.30
73.0	2950	5290	0.27
73.5	2950	5360	0.28
74.0	3040	5430	0.27
74.5	3190	5590	0.26
75.0	3330	5430	0.20
75.5	3450	5850	0.23
76.0	3450	5850	0.23
76.5	3480	6030	0.25
77.0	3480	5940	0.24
77.5	3380	5940	0.26
78.0	3410	5850	0.24
78.5	3360	5670	0.23
79.0	3300	5760	0.26
79.5	3330	6030	0.28
80.0	3380	5940	0.26

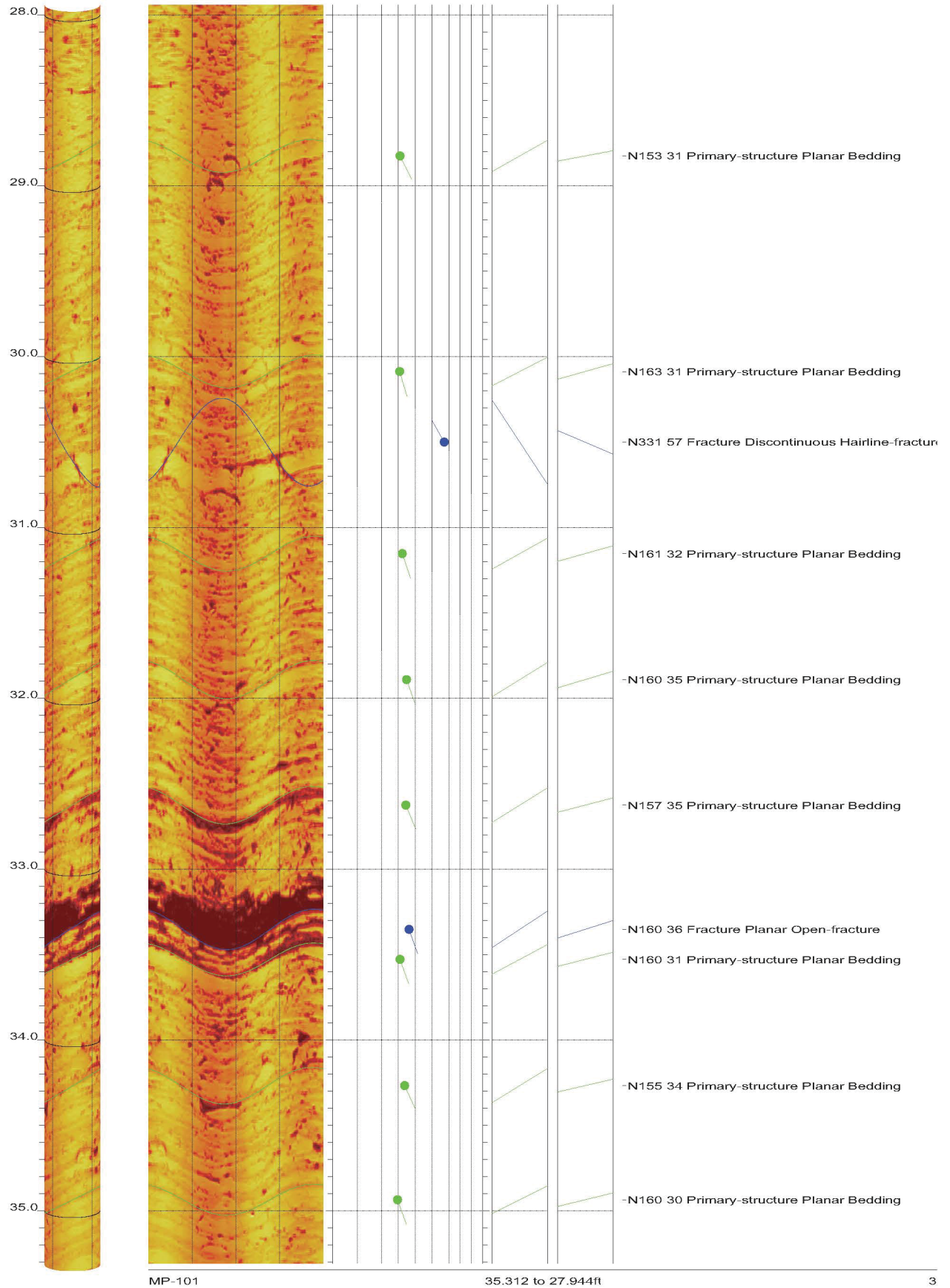
APPENDIX B

ACOUSTIC TELEVIEWER FEATURES

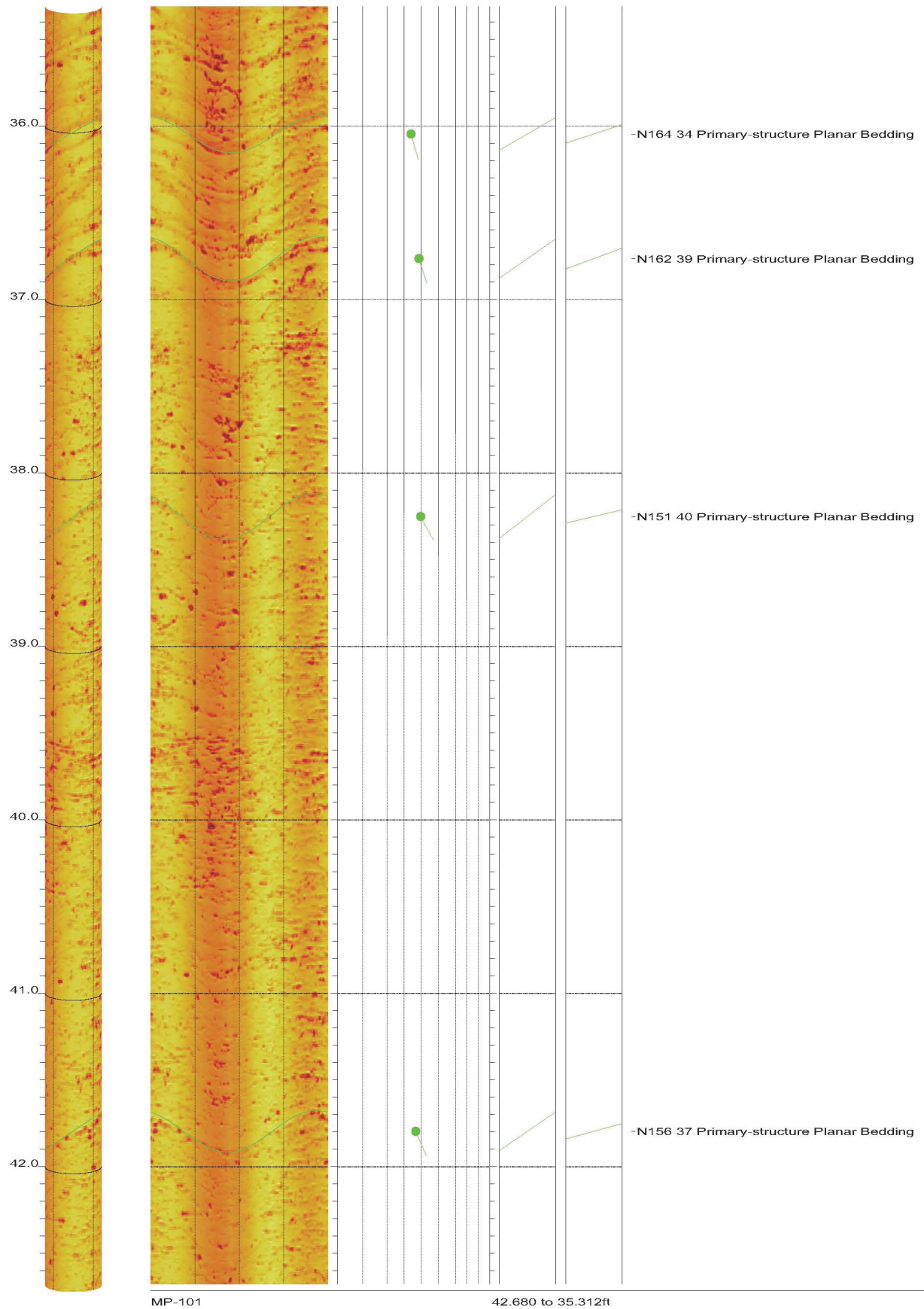
		BHTV DATA PROCESSING RGLDIP vsn 6.2 INTERPRETED BHTV DIPS LOG	
<p>AMEC</p> <p>Borehole: MP-101</p> <p>CLINCH RIVER</p>			
top of borehole..... East: _ North: _ Elev: _		North ref. is true Depth units are feet Vertical scale: 1/10 Horiz scale = 1.00x Vert scale	
Zone from 539.396 to 16.732ft Format: BHTV-NESWN		Borehole diam: 3.900inch Vertical = borehole-axis Image: Amplitude	

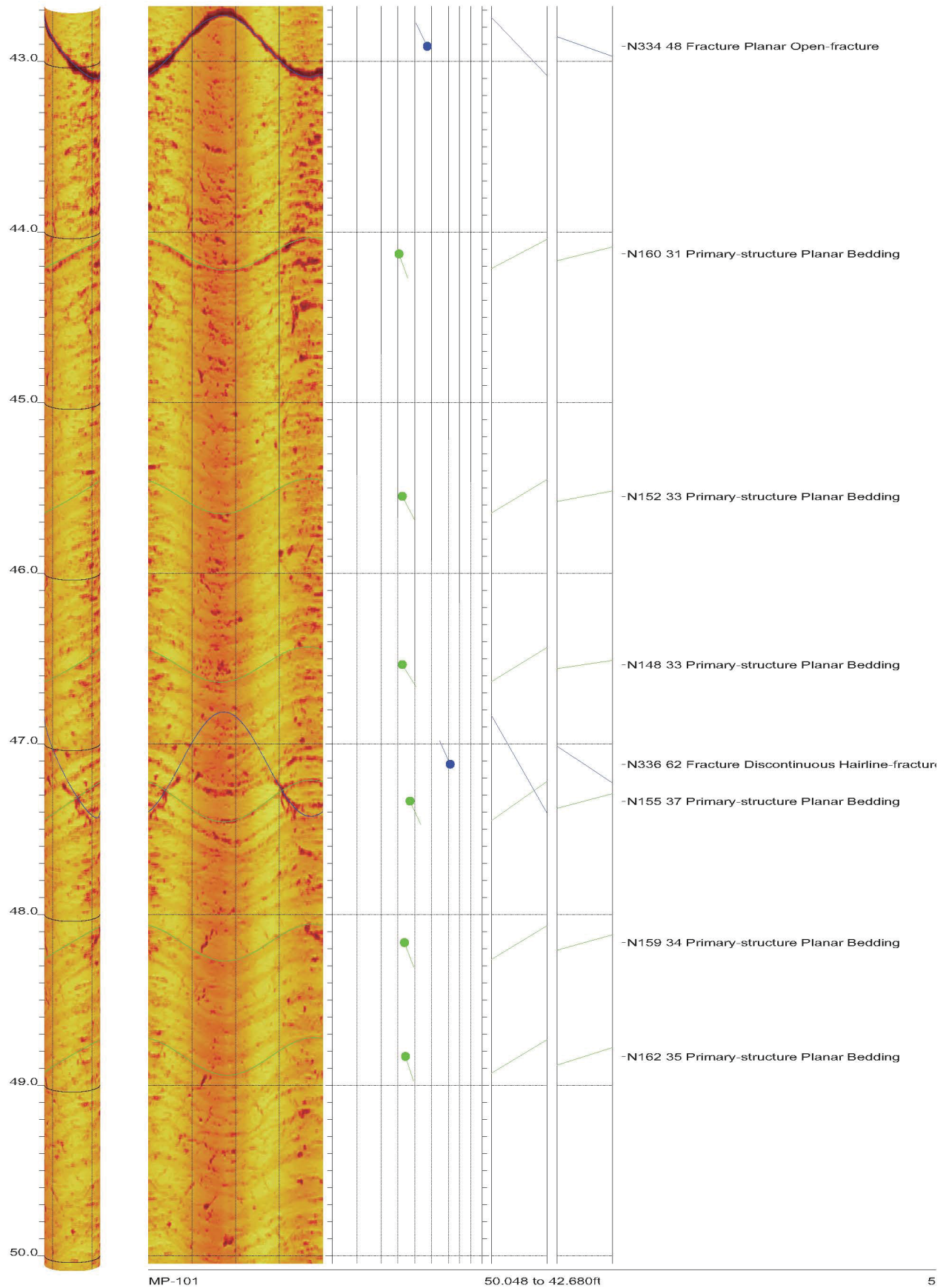






AMEC Clinch River SMR Project Borehole MP-101 Acoustic Televiewer Features rev 2 Sheet 3 of 72





AMEC Clinch River SMR Project Borehole MP-101 Acoustic Televiewer Features rev 2 Sheet 5 of 72

