

ACCELERATED DISTRIBUTION DEMONSTRATION SYSTEM

REGULATORY INFORMATION DISTRIBUTION SYSTEM (RIDS)

ACCESSION NBR: 9109300197 DOC. DATE: 91/09/24 NOTARIZED: NO DOCKET #
 FACIL: 50-250 Turkey Point Plant, Unit 3, Florida Power and Light C 05000250
 50-251 Turkey Point Plant, Unit 4, Florida Power and Light C 05000251

AUTH. NAME PLUNKETT, T.F. AUTH. AFFILIATION Florida Power & Light Co.
 RECIP. NAME RECIPIENT AFFILIATION Document Control Branch (Document Control Desk)

SUBJECT: Forwards Aug 1991 6-month integrated schedule regulatory
 rept reflecting info updated since Feb 1991 rept.

DISTRIBUTION CODE: A001D COPIES RECEIVED: LTR 1 ENCL 1 SIZE: 21
 TITLE: OR Submittal: General Distribution

NOTES:

	RECIPIENT		COPIES			RECIPIENT		COPIES	
	ID	CODE/NAME	LTTR	ENCL		ID	CODE/NAME	LTTR	ENCL
	PD2-2	LA	1	1		PD2-2	PD	1	1
	AULUCK,	R	2	2					
INTERNAL:	NRR/DET/ECMB	7D	1	1		NRR/DET/ESGB		1	1
	NRR/DOEA/OTSB11		1	1		NRR/DST 8E2		1	1
	NRR/DST/SELB	7E	1	1		NRR/DST/SICB8H7		1	1
	NRR/DST/SRXB	8E	1	1		NUDOCS-ABSTRACT		1	1
	OC/LEMB		1	0		OGC/HDS3		1	0
	<u>REG FILE</u>	01	1	1		RES/DSIR/EIB		1	1
EXTERNAL:	NRC	PDR	1	1		NSIC		1	1

NOTE TO ALL "RIDS" RECIPIENTS:

PLEASE HELP US TO REDUCE WASTE! CONTACT THE DOCUMENT CONTROL DESK,
 ROOM P1-37 (EXT. 20079) TO ELIMINATE YOUR NAME FROM DISTRIBUTION
 LISTS FOR DOCUMENTS YOU DON'T NEED!

TOTAL NUMBER OF COPIES REQUIRED: LTTR 18 ENCL 16

MAY



FPL

P.O. Box 029100, Miami, FL, 33102-9100

SEP 24 1991

L-91-259

U. S. Nuclear Regulatory Commission
Attn: Document Control Desk
Washington, D. C. 20555

Gentlemen:

Re: Turkey Point Units 3 and 4
Docket Nos. 50-250 and 50-251
Integrated Schedule 6-Month Regulatory Report

Attached is the August 1991 Six Month Integrated Schedule (I/S) Regulatory Report for the Turkey Point Plant. The schedules discussed in this report reflect information updated since the February 1991 Regulatory Report which was provided to the NRC on March 27, 1991 (L-91-087). Changes of interest to the NRC discussed in this report have been reviewed with the NRC Project Manager for the Turkey Point Plant in accordance with the Integrated Schedule Plan.

Should there be any questions regarding this report, please contact us.

Very truly yours,

T. F. Plunkett
Vice President
Turkey Point Plant Nuclear

TFP/OIH/oih

Attachment

cc: Stewart D. Ebnetter, Regional Administrator, Region II, USNRC
Senior Resident Inspector, USNRC, Turkey Point Plant

9109300197 910924
PDR ADOCK 05000250
R PDR

2100000

an FPL Group company

100-100-100

R

ATTACHMENT I
TO L-91-259

The following is a summary of the I/S modifications for the Six Month Integrated Schedule Regulatory Report.

Changes to the Integrated Schedule since the last issue to the NRC, February 1991 (L-91-087 dated March 27, 1991) are as follows:

MODIFICATIONS ADDED

<u>I/S #</u>	<u>DESCRIPTION</u>	<u>LIC CAT</u>
1374	3 VCT LEVEL ROSEMONT REPLACEMENT	FPL
1375	4 VCT LEVEL ROSEMONT REPLACEMENT	FPL
1376	C HYDROGEN RECOMBINER INSTALLATION	REG

MODIFICATIONS CANCELLED

<u>I/S #</u>	<u>DESCRIPTION</u>	<u>LIC CAT</u>
1351	3 PHASE A ISO SIGNAL TO RCS SMPL LN	FPL

MODIFICATIONS COMPLETED

<u>I/S #</u>	<u>DESCRIPTION</u>	<u>LIC CAT</u>
68	3 ATWS MODIFICATIONS	REG
216	4 ADD & RELOCATE AFW N2 SUPPLY	FPL
233	3 REACTOR CAVITY HANDRAIL	FPL
341	C AREA RADIATION MONIT'G SYS REPL	CFO
414	3 REPLACE FARRIS RELIEF VALVES/CCW	FPL
415	4 REPLACE FARRIS RELIEF VALVES/CCW	FPL
426	3 RPI INVERTER REPLACEMENT	I&E
509	C EDG HC TURBO/IDLE GEAR STUB SHAFT	FPL
526	3 MOV FAIL DUE TO IMPROPER SW SETTING	FPL
565	4 RHR-INSTL UPGRADED 8" GLOBE VLV	CFO
576	C EDG AIR START MOTORS UPGRADE	CFO
587	4 ATWS MODIFICATIONS	REG
661	3 LOAD CENTERS X-FORMER REPLACEMENT	ORA
766	4 ADD'L CNTMT ELEC PENETRATIONS	FPL
902	3 NORM CNTMT CLRS CAPACITY INCREASE	FPL
903	4 NORM CNTMT CLRS CAPACITY INCREASE	FPL
1069	3 REACTOR HEAD LIFT RIG LOAD CELL	NRR
1070	4 REACTOR HEAD LIFT RIG LOAD CELL	NRR
1081	4 LOAD CENTERS X-FORMER REPLACEMENT	ORA

MODIFICATIONS COMPLETED (CONTINUED)

<u>I/S #</u>	<u>DESCRIPTION</u>	<u>LIC CAT</u>
1102	4 MAIN FEED CV 2011 CLOSING TIME	FPL
1137	C NEW EDG PROJ SITE PREPARATION	FPL
1144	C EDG PROJECT LICENSING SUBMITTALS	FPL
1146	3 EDG STATION BATTERY CHARGERS	FPL
1154	C FLUX MAPPING & SEAL TABLE EVAL	I&E
1174	C EDG DIESEL/D.O.S.T. BLDG CONST	FPL
1175	C NEW EDG BLDGS LTG FIRE COMM HVAC	FPL
1176	C NEW EDG FIRE PROTECTION	FPL
1218	C INVERTER RM HVAC UPGRADE/PERM FIX	FPL
1249	S MOV THERMAL OVERLOAD HTR SELECTION	FPL
1252	3 REDUCTION IN 4KV BKR VOLTAGE DROP	ORA
1253	4 REDUCTION IN 4KV BKR VOLTAGE DROP	ORA
1258	4 MSIV SAFETY REL AIR ACCUM SYS	FPL
1259	3 ATMOSPHERIC DUMP VLV REPLACEMENT	FPL
1267	3 PZR RLF LN SNUBBER REPLACEMENT	FPL
1268	S SOER 86-3 CK VLV APPLICATION RVW	ORA
1271	C MN CTL RM DOOR & SECURITY SYS MOD	FPL
1274	4 STM GENERATOR J NOZZLE REPLACEMENT	FPL
1275	C DES & PURCH STA BATTERY CHARGERS	FPL
1315	3 PORV STROKE TIME ENHANCEMENT	FPL
1320	C FLOOD PROT EDG FUEL OIL XFER PMPS	I&E
1321	3 CHEM INJECTION OF ICW TO CCW HX	FPL
1323	3 CHARG PMP RELIEF VLV/DRN LN SUPPT	FPL
1324	4 CHARG PMP RELIEF VLV/DRN LN SUPPT	FPL
1325	S PROBABILITY RISK ASSESSMENT PROGRAM	NRR
1327	3 GL 88-17 LOSS OF DECAY HEAT REMOVAL	NRR
1329	3 4KV BUS A/C MODIFICATION	FPL
1330	4 4KV BUS A/C MODIFICATION	FPL
1348	3 INSPECT/REPAIR INTAKE STRUCTURE	FPL
1353	3 MG-6 RELAY REPLACEMENT	FPL
1354	4 MG-6 RELAY REPLACEMENT	FPL
1356	4 REPLACE SI CHK VLVS 4-874A & B	FPL
1368	3 REPL MOV-535/536 ACTUATORS	FPL
1374	3 VCT LEVEL ROSEMONT REPLACEMENT	FPL
1375	4 VCT LEVEL ROSEMONT REPLACEMENT	FPL

INTEGRATED SCHEDULE FORECAST DATES
EXCEEDING NRC COMMITMENT DATES

MOD #	UNIT	MOD DESCRIPTION	NRC CAT	JULY 1991	AUG 1991	THIS MO - SLIP	NRC DATE MAR 91	DAYS -BEHIND	EXPLANATION	NRC DATE AUG 1991
711	C	IMPROVE PA SYSTEM AUDIBILITY	I&E	13FEB92	23APR93	-435	4DEC92	-140	TO BE COMPLETED IN NEXT UNIT 4 OUTAGE.	3JUN93
1056	S	PWR LOSS TO VITAL BUS AT SALEM 2	I&E	2MAR92	4DEC91	89	4OCT91	-61	ENGR. REQUEST TO LICENSING.	3JAN92
1087	S	IEN 87-2 SEISMIC QUAL DIAPHR VLVS	I&E	31DEC91	10FEB92	-41	5NOV91	-97	PER THE CURRENT I/S SCHEDULE.	10FEB92

I/S NRC COMMITMENT MODIFICATIONS
CURRENT SCHEDULE -VS- NRC COMMITMENT DATES

MOD # UNIT	MOD DESCRIPTION	NRC CAT	AUGUST START	SCHEDULE FINISH	NRC COMMIT	DAYS AHEAD/BEHIND
341 C	AREA RADIATION MONIT"G SYST REPL	CFO	18AUG89	6MAY91	23AUG91	109
576 C	EDG AIR START MOTORS UPGRADE	CFO	18JUL86	31MAY91	5NOV91	158
1376 C	HYDROGEN RECOMBINER INSTALLATION	REG	11FEB91	7SEP91	15DEC91	99
550 3	NORMAL CTMT CLRS CNTRL SWITCHES	NRR	17JAN89	26AUG92	4DEC92	100
569 4	NORMAL CTMT CLRS CNTRL SWITCHES	NRR	17JAN89	6APR93	3JUN93	58
700 C	VITAL AREA BARRIERS	NRR	8FEB88	28AUG91	5NOV91	69
1011 S	CNTRL ROOM HFE ANNUNCIATOR STUDY	NRR	5JAN90	15APR91	5NOV91	204
1182 C	SECURITY PERIMETER LIGHTING	NRR	25APR88	19JUL91	31DEC91	165
1183 C	PERIMETER FENC"G & INTRUS"N DET"N	NRR	25APR88	15NOV91	31DEC91	46
1184 C	SECURITY ACCESS CNTL/CARD READER	NRR	26SEP88	28JUN91	31DEC91	186
1185 C	SECURITY COMPUTER SYSTEM	NRR	26SEP88	30AUG91	31DEC91	123
1186 C	SECURITY PLANT ENTRANCE FACILITY	NRR	31OCT88	27JUL90	5NOV91	466
1246 4	TURB RUNBACK SELECTOR SWITCH REPL	NRR	10MAR87	1APR93	3JUN93	63
1289 S	SFTY PARAMTR DISPLAY SYS HFE REVW	NRR	17NOV88	14OCT91	5NOV91	22
1290 C	CTL RM OP DES PHONE REACH RESOLN	NRR	10SEP91	20OCT92	4DEC92	63
1295 3	RENUMBER/RELABEL RCS VENT VALVES	NRR	5JAN90	25APR90	4OCT91	527
1296 4	RENUMBER/RELABEL RCS VENT VALVES	NRR	5JAN90	24JUL91	5NOV91	104
1297 3	NIS-ELIM. UNUSED SWITCH POSITIONS	NRR	26JUN90	24SEP92	4DEC92	71
1298 4	NIS-ELIM. UNUSED SWITCH POSITIONS	NRR	26JUN90	5MAY93	3JUN93	29
1301 C	CLOSED CIRCUIT TV SECURITY SYSTEM	NRR	17OCT88	18JUN91	31DEC91	196
1312 S	THERMAL STRESS PPG CONNECTD TO RCS	NRR	8MAR89	30SEP91	5NOV91	36
1327 3	GL 88-17 LOSS OF DECAY HEAT REMVL	NRR	28SEP89	30AUG91	4OCT91	35
1328 4	GL 88-17 LOSS OF DECAY HEAT REMVL	NRR	28SEP89	13SEP91	5NOV91	53

I/S NRC COMMITMENT MODIFICATIONS
CURRENT SCHEDULE -VS- NRC COMMITMENT DATES

MOD #	UNIT	MOD DESCRIPTION	NRC CAT	AUGUST START	SCHEDULE FINISH	NRC COMMIT	DAYS AHEAD/BEHIND
1362	3	NUREG 0737, PORV SUPPORT MODS	NRR	13SEP90	29AUG91	40CT91	36
1363	4	NUREG 0737, PORV SUPPORT MODS	NRR	13SEP90	28AUG91	5NOV91	69
426	3	RPI INVERTER REPLACEMENT	I&E	29NOV88	29DEC90	40CT91	279
711	C	IMPROVE PA SYSTEM AUDIBILITY	I&E	15MAY87	23APR93	3JUN93	41
765	4	RPI INVERTER REPLACEMENT	I&E	6DEC88	10JUN91	5NOV91	148
860	3	INST CTMT PHYS BARR/PREV PERS ACC	I&E	7APR88	29OCT92	4DEC92	36
861	4	INST CTMT PHYS BARR/PREV PERS ACC	I&E	5JUL89	14APR93	3JUN93	50
1056	S	PWR LOSS TO VITAL BUS AT SALEM 2	I&E	10SEP91	4DEC91	3JAN92	30
1087	S	IEN 87-2 SEISMIC QUAL DIAPHR VLVS	I&E	30AUG91	10FEB92	10FEB92	0
1313	3	SMALL BORE PIPING/NCR DISPOSITION	I&E	7MAY90	24SEP92	4DEC92	71
1314	4	SMALL BORE PIPING/NCR DISPOSITION	I&E	7MAY90	28SEP91	5NOV91	38
1320	C	FLOOD PROT EDG FUEL OIL XFER PUMPS	I&E	31MAY89	5APR91	5NOV91	214
1372	C	CONTROL ROOM HVAC CONTROL MOD	I&E	22AUG91	29OCT92	4DEC92	36

PROJECT ALMGA99 CFO	TURKEY POINT NUCLEAR PLANT INTEGRATED SCHEDULE FLORIDA POWER AND LIGHT CO.	MODE T/FT INTERVAL 1 YEAR(S)	TARGET SCHEDULE 30 TARG FINISH 17MAY95 TARG DATA DATE 29NOV88	RUN 16SEP91 13 40 PROJECT 12 8683 SCHEDULE BAR CHART
PAGE 1 SHEET 1	TARGET SCHEDULE	SORT BREAKS BCODES 9 CUR EF		
START 22JAN88 FINISH 30DEC95 DATA DATE 20AUG91	LINE BREAK ON NRC COMMITMENT CATEGORIES LINE BREAK ON CFO SUB-SYSTEM			

		1989	1990	1991	1992	1993
CFO	POST TMI CONFIRMATORY MODIFICAT"N	C AREA RADIATION MONIT"G SYST REPL CFO MOD 0341 COMPLETE SATS ON PCM 89-462 DATED 8/23/91. 18AUG89				
	P04-T11.20 U4 SEL SYS MODS/REPAIRS	C EDG AIR START MOTORS UPGRADE CFO MOD 0576 COMPLETE SATS ON PCM 86-155 DATED 8/23/91. 18JUL86				

NOTES:

↓ ORIGINAL NRC COMMITMENT DATE

▽ CURRENT NON-OUTAGE NRC COMMITMENT DATE

▽▽ CURRENT OUTAGE NRC COMMITMENT DATE

DATA
DATE

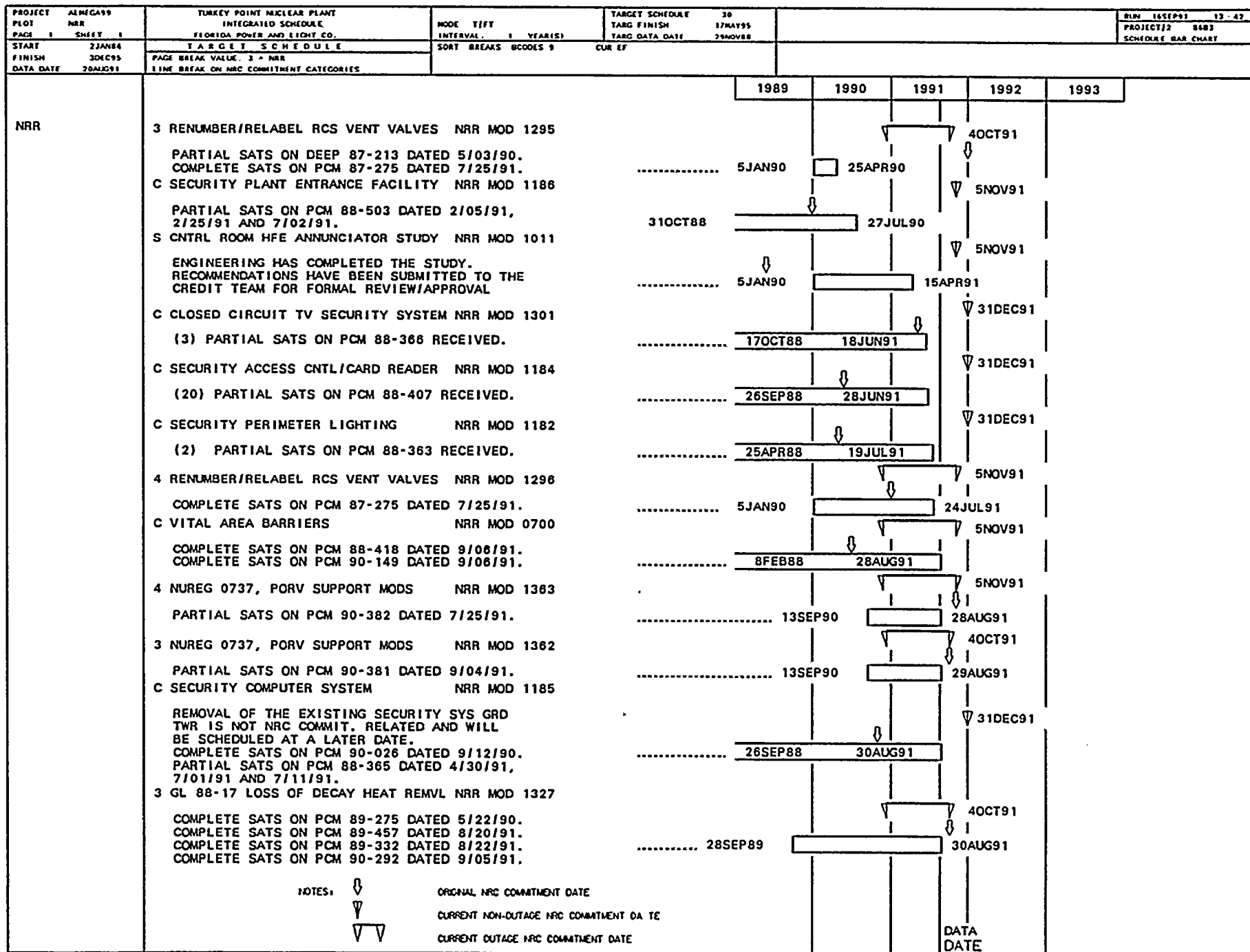
100

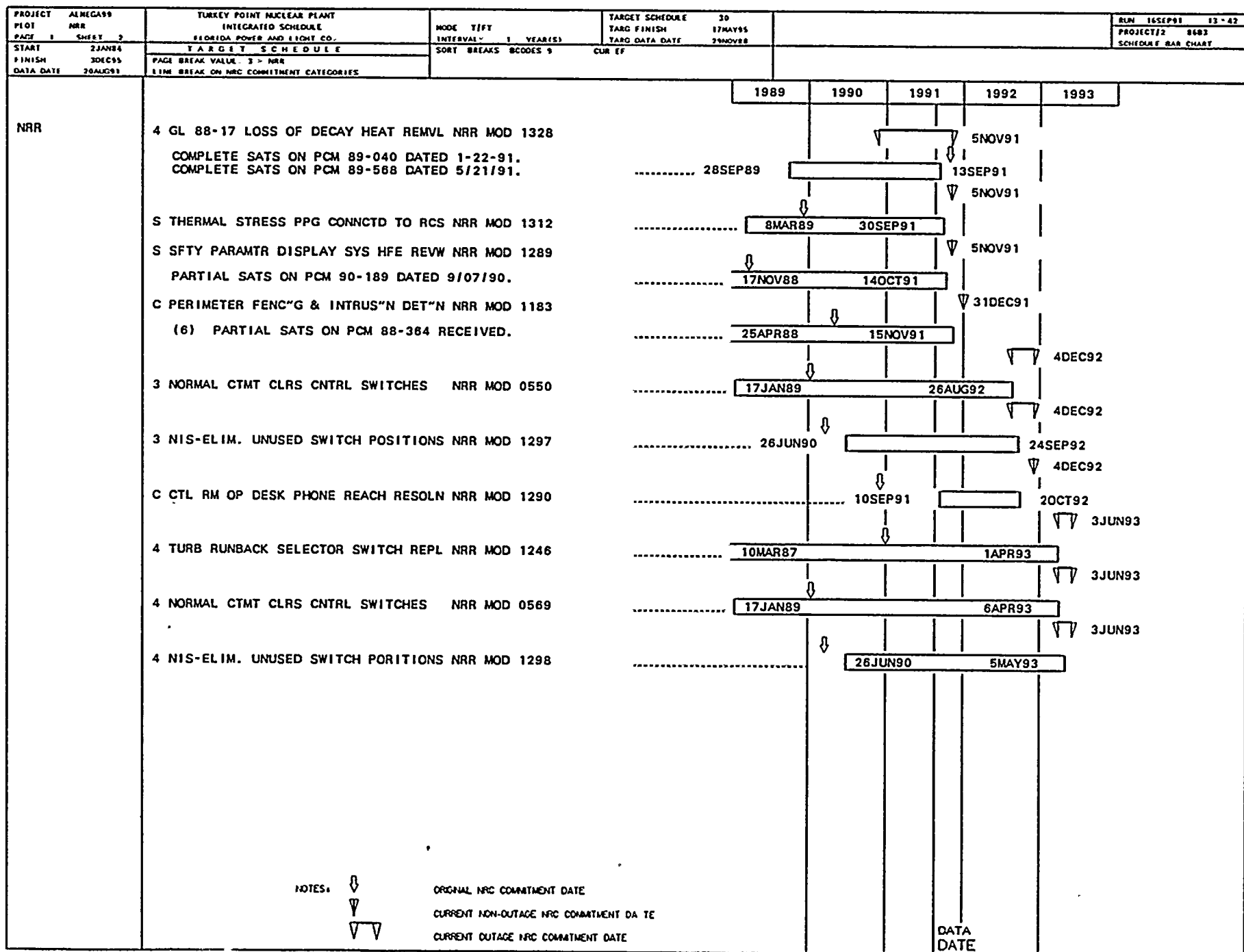


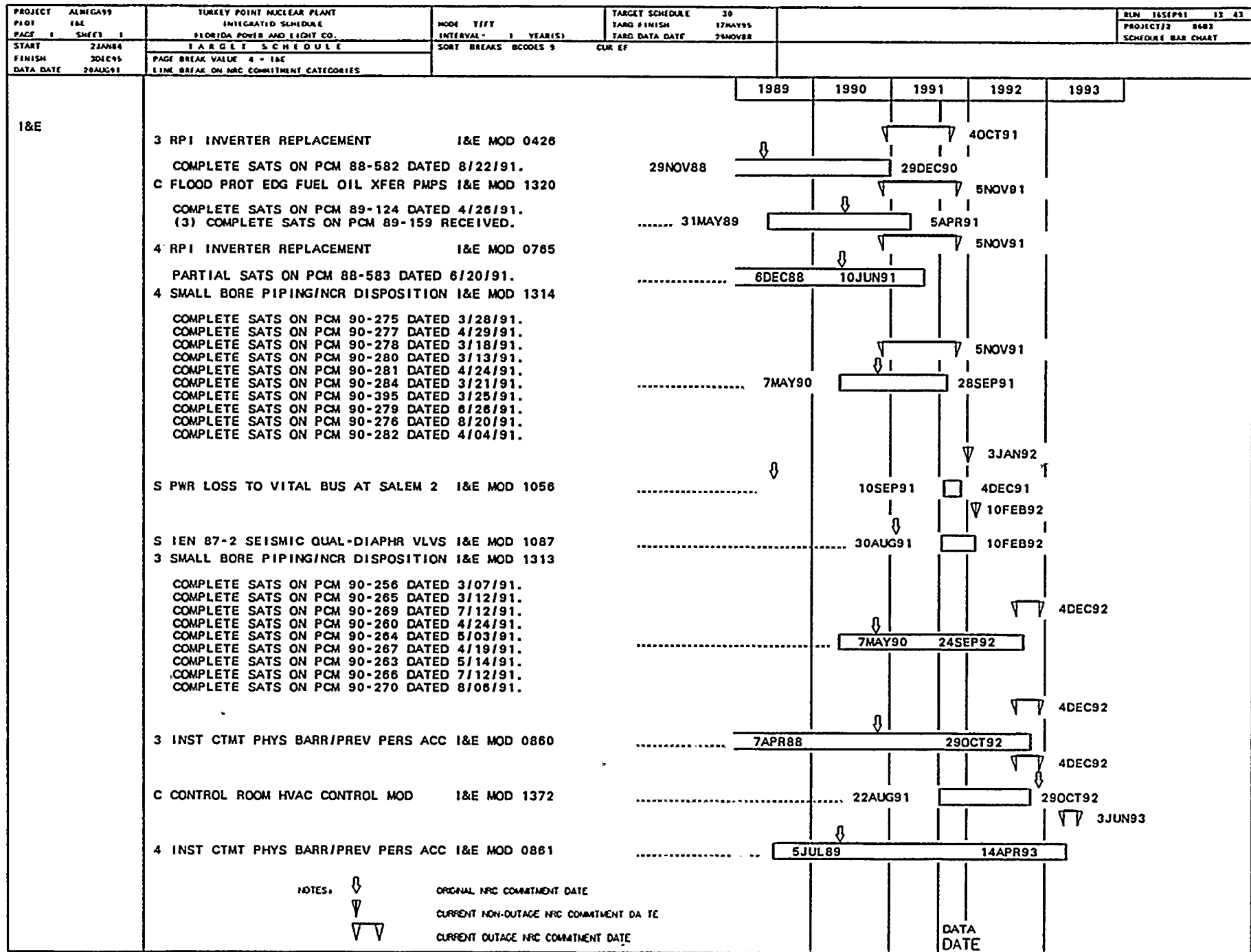
PROJECT PLOT PAGE	ALMGA99 REG 1 SHEET 1	TURKEY POINT NUCLEAR PLANT INTEGRATED SCHEDULE FLORIDA POWER AND LIGHT CO.	MODE TIFT INTERVAL 1 YEAR(S)	TARGET SCHEDULE TARG FINISH TARG DATA DATE	30 17MAY95 29NOV88	RUN 15SEP91 13 41 PROJECT 12 9483 SCHEDULE BAR CHART
START FINISH DATA DATE	2JAN84 30DEC95 20AUG91	TARGET SCHEDULE PAGE BREAK VALUE 2 = REG LINE BREAK ON NRC COMMITMENT CATEGORIES	SORT BREAKS BCODES 9		CUR EF	
REG	<p>C HYDROGEN RECOMBINER INSTALLATION REG MOD 1376 PARTIAL SATS ON PCM 91-028 DATED 9/04/91.</p>					<p>1989 1990 1991 1992 1993</p> <p>11FEB91</p> <p>15DEC91</p> <p>7SEP91</p>
NOTES:	<p>ORIGINAL NRC COMMITMENT DATE</p> <p>CURRENT NON-OUTAGE NRC COMMITMENT DATE</p> <p>CURRENT OUTAGE NRC COMMITMENT DATE</p>					DATA DATE



2000



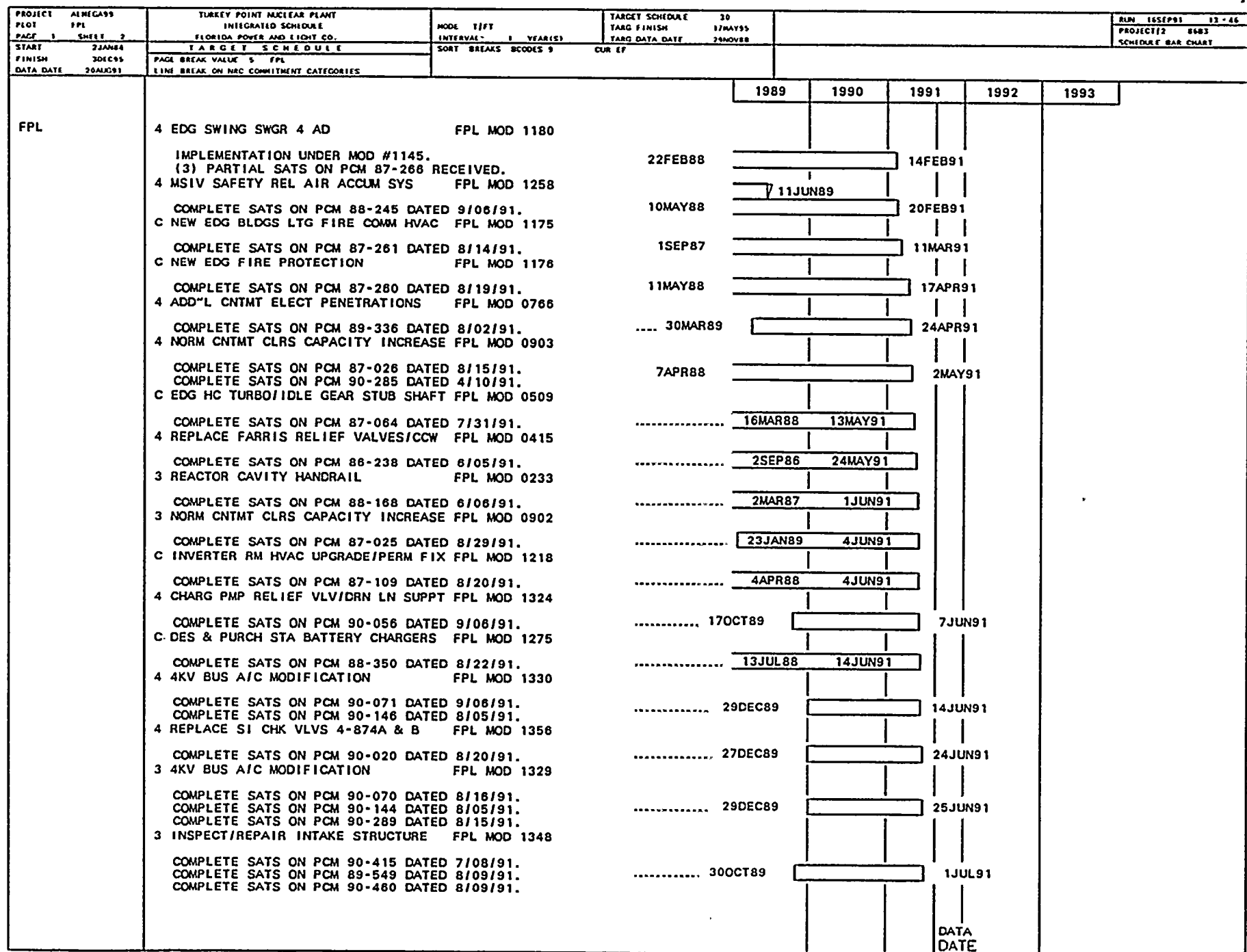


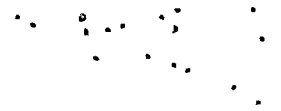


[illegible]

PROJECT	ALMGA99	TURKEY POINT NUCLEAR PLANT	MODE	T/FF	TARGET SCHEDULE	30	BLN	16SEP91	13	45
PLOT	ORA	INTEGRATED SCHEDULE	TARG	FINISH	1/MAY95					
PAGE	1	SHEET	1	YEAR(S)	TARG DATA DATE	29NOV88				
START	22JAN84	TARGET SCHEDULE	SORT	BREAKS	BCODES	9	CUR	EF		
FINISH	30JUN95	PAGE BREAK VALUE - 6	ORA							
DATA DATE	20JUL91	LINE BREAK ON PRC COMMITMENT CATEGORIES								
ORA	3 LOAD CENTERS X-FORMER REPLACEMENT ORA MOD 0661	COMPLETE SATS ON PCM 89-532 DATED 7/31/91.	14AUG89		6MAR91				
	4 LOAD CENTERS X-FORMER REPLACEMENT ORA MOD 1081	COMPLETE SATS ON PCM 89-533 DATED 7/31/91.	16FEB90		23MAY91				
	C ADD"N OF "SWING" STATION BATTERY ORA MOD 1272	PARTIAL SATS ON PCM 88-416 DATED 5/30/91.	22SEP88		7JUN91				
	C GAS ANALYZER SYSTEM MOD ORA MOD 0036	COMPLETE SATS ON PCM 84-165 DATED 9/04/91.	2DEC85		27AUG91				
	C WASTE NEUTR & WTP SYSTEM MOD ORA MOD 0042	COMPLETE SATS ON PCM 86-084 DATED 8/27/90	9JAN86		9SEP91				
	PARTIAL SATS ON PCM 85-195 DATED 4-30-87.	C WTP IN-LINE CHEMISTRY MONITORS ORA MOD 0767	7AUG90		14FEB92				
	C REPL FIRE WTR SYS MN PP W/10" LN ORA MOD 1281	15JUL91		24APR92					
	3 SECONDARY CHEM INLINE MONITORS ORA MOD 0102	18FEB92		13JAN93					
	4 SECONDARY CHEM INLINE MONITORS ORA MOD 0103	3MAR92		28JAN93					

PROJECT PLOT PAGE 1	ALMAGASS FPL SHEET 1	TURKEY POINT NUCLEAR PLANT INTEGRATED SCHEDULE FLORIDA POWER AND LIGHT CO.	MODE TFFT INTERVAL: 1 YEAR(S)	TARGET SCHEDULE TARG FINISH 17MAY95 TARG DATA DATE 28NOV88	RUN 16SEP91 13 46 PROJECT#2 8603 SCHEDULE BAR CHART				
START 22JAN84 FINISH 30DEC95 DATA DATE 20AUG91	T A R G E T S C H E D U L E PAGE BREAK VALUE 5 ~ FPL LINE BREAK ON NRC COMMITMENT CATEGORIES	SORT BREAKS BCODES 9 CUR EF							
FPL	3 MOV FAIL DUE TO IMPROPER SW SET"G FPL MOD 0526 COMPLETE SATS ON PCM 87-005 DATED 4/15/87. COMPLETE SATS ON PCM 87-008 DATED 8/30/91. 4 STM GENERATOR J NOZZLE REPLACEMNT FPL MOD 1274 COMPLETE SATS ON PCM 88-253 DATED 4/11/91. 4 CONDENSER INLET WATERBOX REPAIR FPL MOD 1288 PARTIAL SATS ON DEEP 88-344 DATED 05-04-89. 4 MOV FAIL DUE TO IMPROPER SW SET"G FPL MOD 1110 THE COMMITMENT RELATED PORTION OF THIS MODIFICATION WAS COMPLETED IN MARCH 1989. THE REMAINDER OF THE WORK IS NOT I&E RELATED. PARTIAL SATS ON PCM 87-006 & 87-009 -04-MAR-89 3 RHR PUMPS SEAL UPGRADE FPL MOD 1172 PARTIAL SATS ON PCM 88-077 DATED 03/28/90 S RESOLVE CNTMT PURG FSAR DISCREP FPL MOD 0828 C HP WORK AREA AND N.O. WORK AREA FPL MOD 0378 PARTIAL SATS ON PCM 89-512 DATED 2/20/91. 3 SFP COOLING SYS SEISMIC MOD FPL MOD 0116 THE COMMITMENT FOR THIS MOD HAS BEEN MET. BALANCE OF WORK BEYOND THE 18 DEC 87 NRC COMMITMENT DATE IS FOR ISSUANCE OF FINAL STRESS CALCULATIONS, WHICH WAS NOT REQD TO MEET THIS COMMITMENT. SATS REQUIRED FOR CLOSURE. 3 EDG STATION BATTERY CHARGERS FPL MOD 1146 IMPLEMENTATION UNDER MOD #1145. COMPLETE SATS ON PCM 87-267 DATED 8/22/91. 3 MSIV AIR OPERATOR BACKUP N2 SYST FPL MOD 0267 SATS REQUIRED FOR CLOSURE. S MOV THERMAL OVERLOAD HTR SELECTN FPL MOD 1249 REF. LTR JPE-PT-P-88-1051 CONFIRMS MEETING NRC COMMIT ON JUN 20, 1988. COMPLETION OF PREP & APPVL OF STD E-3.20 MEETS NRC COMMITMENT. COMPLETE SATS ON PCM 87-180 DATED 8/21/91. COMPLETE SATS ON PCM 87-181 DATED 8/23/91. COMPLETE SATS ON PCM 90-197 DATED 8/21/91. 4 SPENT FUEL POOL RERACKING FPL MOD 1190 COMPLETE SATS ON PCM 87-405 DATED 2-1-91. PARTIAL SATS ON PCM 88-319 DATED 12-6-90. 3 EDG SWING SWGR 3AD FPL MOD 1178 IMPLEMENTATION UNDER MOD #1145. (4) PARTIAL SATS ON PCM 87-265 RECEIVED.	1989	1990	1991	1992	1993			
		10APR86		10JAN89					
		28JUN88	[]	2MAY89					
		14SEP88	[]	22MAY89					
		15JAN87	[]	11JUN89 1JUN89					
		31AUG87	[]	23MAR90					
	 17NOV89	[]	10CT90					
	 18SEP89	[]	19NOV90					
		14AUG85	[]	14DEC90					
		22MAR88	[]	28DEC90					
		2DEC85	[]	11JAN91					
		19OCT87	▽	25JUL89					
			[]	24JAN91					
		31JUL87	[]	29JAN91					
		20AUG87	[]	14FEB91					





PROJECT ALMEGA99	TURKEY POINT NUCLEAR PLANT	MODE T/FT	TARGET SCHEDULE 30	RUN 16SEP91 13:46
PL01 FPL	INTEGRATED SCHEDULE	INTERVAL 1 YEAR(S)	TARG FINISH 17MAY95	PROJECT/2 8683
PAGE 1 SHEET 3	FLORIDA POWER AND LIGHT CO.		TARG DATA DATE 29NOV88	SCHEDULE BAR CHART
START 2JAN84	TARGET SCHEDULE	SORT BREAKS BCODES 9	CUR EF	
FINISH 30DEC95	PAGE BREAK VALUE 5 FPL			
DATA DATE 20AUG91	LINE BREAK ON NRC COMMITMENT CATEGORIES			

	1989	1990	1991	1992	1993
FPL					
4 ATMOSPHERIC DUMP VLV REPLACEMENT FPL MOD 1260					
SATS REQUIRED FOR CLOSURE.					
4 EDG/LD CTR 4H, MCC4D & XFR OF LDS FPL MOD 1139					
IMPLEMENTATION UNDER MOD #1145.					
(7) PARTIAL SATS ON PCM 87-257 RECEIVED.					
C EDG BLDG (3A/4A,3B/4B) TIE-INS FPL MOD 1140					
IMPLEMENTATION UNDER MOD #1145.					
(14) PARTIAL SATS ON PCM 87-284 RECEIVED.					
3 EDG LOAD CTR 3H/MCC 3D FPL MOD 1142					
IMPLEMENTATION UNDER MOD #1145.					
COMPLETE SATS ON PCM 89-089 DATED 9/05/91.					
(12) PARTIAL SATS ON PCM 87-258 RECEIVED.					
3 REPLACE FARRIS RELIEF VALVES/CCW FPL MOD 0414					
COMPLETE SATS ON PCM 86-237 DATED 8/02/91.					
S PROV ACCEPT CRIT FOR OIL XFR PMPS FPL MOD 0928					
ENGINEERING LETTER REQUIRED FOR MOD CLOSURE.					
3 CHARG PMP RELIEF VLV/DRN LN SUPPT FPL MOD 1323					
COMPLETE SATS ON PCM 90-055 DATED 8/08/91.					
3 REPL MOV-535/536 ACTUATORS FPL MOD 1368					
COMPLETE SATS ON PCM 90-518 DATED 8/21/91.					
C EDG DIESEL/D.O.S.T. BLDG CONST FPL MOD 1174					
COMPLETE SATS ON PCM 87-259 DATED 8/18/91.					
4 PORV STROKE TIME ENHANCEMENT FPL MOD 1316					
4 BACKUP INSTR. AIR COMPRESSOR FPL MOD 0291					
SATS REQUIRED FOR CLOSURE.					
3 BORIC ACID EVAP PMP UPGRADE FPL MOD 0237					
NEED SATS FOR CLOSURE					
C ADD'L EMERG LIGHTING FOR APP. R FPL MOD 0592					
PARTIAL SATS ON PCM 86-213 (REV 6) 10-31-89					
C ELECT DWG SEPARAT'N & RENUMBERING FPL MOD 1095					
PARTIAL SATS ON PCM 87-279 DATED 04-13-89.					
C NEW EDG PROJ SITE PREPARATION FPL MOD 1137					
COMPLETE SATS ON PCM 87-212 DATED 9/03/91.					
S ICW CK VLV OPER W/IA FAILURE FPL MOD 1283					
ENGINEERING LETTER REQUIRED FOR CLOSURE.					
4 TPCW HX ISOLTN - CV2201 FAIL CLSE FPL MOD 1285					
PARTIAL SATS ON PCM 88-346 DATED 04-29-89.					
C UNDERSZD NZZL-SHLL JOINTS-TNK HX FPL MOD 1343					

3MAY88	19JUL91			
10OCT88	26JUL91			
29SEP88	26JUL91			
10OCT88	26JUL91			
22DEC86	2AUG91			
20FEB91		2AUG91		
17OCT89		6AUG91		
14SEP90		6AUG91		
8MAY87	16AUG91			
5DEC88	17AUG91			
4APR86	20AUG91			
12NOV85	21AUG91			
12JUN86	21AUG91			
5JUN87	21AUG91			
15JAN87	21AUG91			
26OCT87	21AUG91			
15NOV88	21AUG91			
1JUN90		22AUG91		

DATA DATE



10-10-10

10-10-10

10-10-10

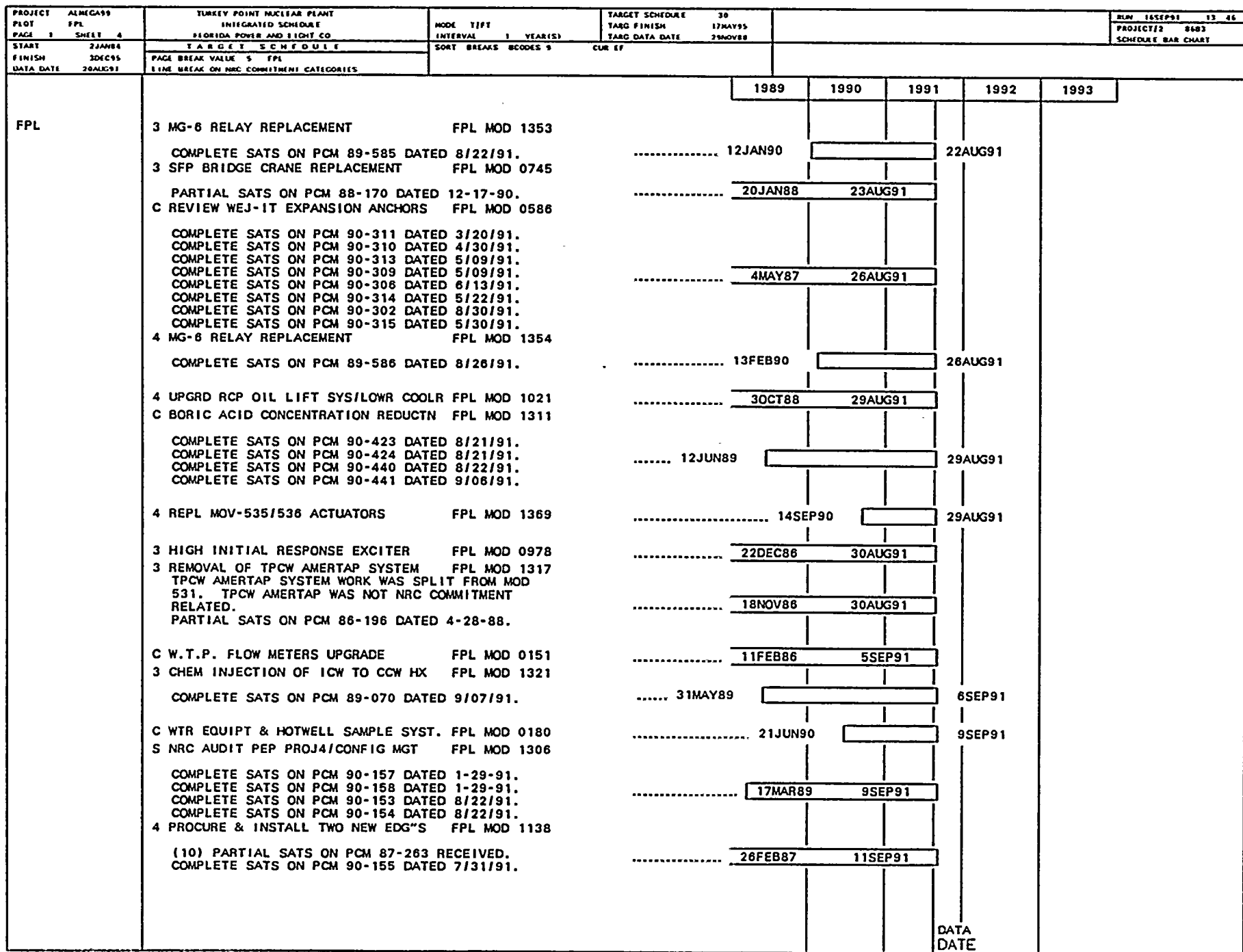
10-10-10

10-10-10

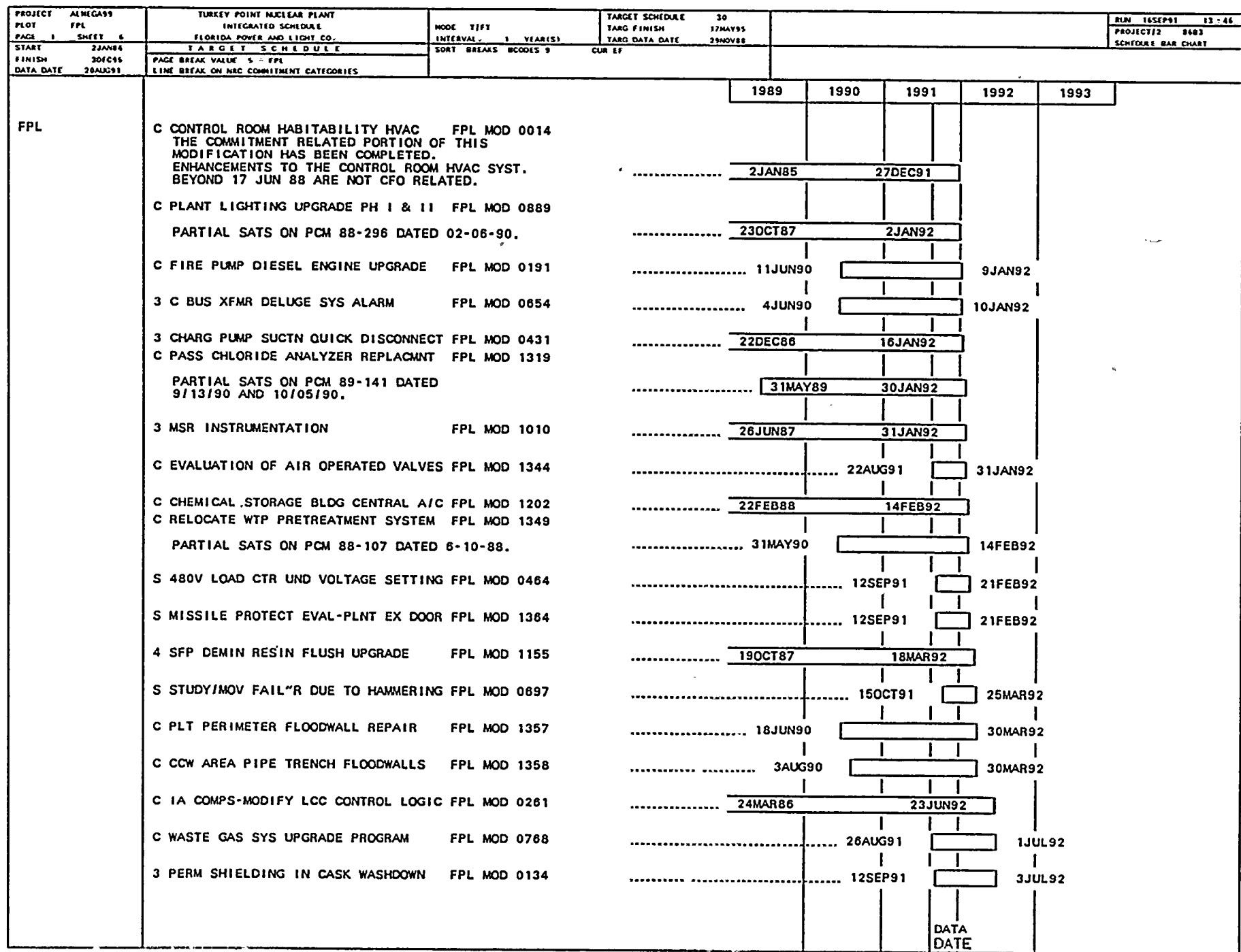
10-10-10

10-10-10

10-10-10



PROJECT PLOT PAGE 1 SHEET 5	ALMAGASS FPL	TURKEY POINT NUCLEAR PLANT INTEGRATED SCHEDULE FLORIDA POWER AND LIGHT CO.	MODE T/FT INTERVAL - 1 YEAR(S)	TARGET SCHEDULE TARG FINISH 30 17MAY95 TARG DATA DATE 29NOV88	RLN 16SEP91 13 - 46 PROJECT/2 8483 SCHEDULE BAR CHART																																																																																																																																																																																																
START 2JAN84 FINISH 30DEC95 DATA DATE 20AUG91	TARGET SCHEDULE PAGE BREAK VALUE 5 - FPL LINE BREAK ON NRC COMMITMENT CATEGORIES		SORT BREAKS BCODES 9 CUR EF																																																																																																																																																																																																		
<table><tr><td></td><td>1989</td><td>1990</td><td>1991</td><td>1992</td><td>1993</td></tr><tr><td>FPL</td><td colspan="5"></td></tr><tr><td>C SECONDARY SIDE HIGH-ENERGY PIPING FPL MOD 0892</td><td>13JUN88</td><td>13SEP91</td><td></td><td></td><td></td></tr><tr><td>C EXISTING "A" EDG IDLE START/STOP FPL MOD 0132</td><td></td><td></td><td></td><td></td><td></td></tr><tr><td>(14) PARTIAL SATS ON PCM 87-264 RECEIVED.</td><td>29SEP88</td><td>14SEP91</td><td></td><td></td><td></td></tr><tr><td>C EPS ELECTRICAL ENHANCEMENT FPL MOD 1145</td><td></td><td></td><td></td><td></td><td></td></tr><tr><td>(14) PARTIAL SATS ON PCM 87-264 RECEIVED.</td><td></td><td></td><td></td><td></td><td></td></tr><tr><td>(7) PARTIAL SATS ON PCM 87-257 RECEIVED.</td><td></td><td></td><td></td><td></td><td></td></tr><tr><td>(12) PARTIAL SATS ON PCM 87-258 RECEIVED.</td><td>24FEB88</td><td>14SEP91</td><td></td><td></td><td></td></tr><tr><td>(4) PARTIAL SATS ON PCM 87-266 RECEIVED.</td><td></td><td></td><td></td><td></td><td></td></tr><tr><td>(3) PARTIAL SATS ON PCM 87-266 RECEIVED.</td><td></td><td></td><td></td><td></td><td></td></tr><tr><td>COMPLETE SATS ON PCM 87-267 DATED 8/22/91.</td><td></td><td></td><td></td><td></td><td></td></tr><tr><td>3 BYPASS RTD ELIMINAT"N MODIFICAT"N FPL MOD 0616</td><td></td><td></td><td></td><td></td><td></td></tr><tr><td>COMPLETE SATS ON PCM 90-385 DATED 8/20/91.</td><td>16JAN90</td><td></td><td></td><td>18SEP91</td><td></td></tr><tr><td>4 REACTOR CAVITY HANDRAIL FPL MOD 0080</td><td>2MAR87</td><td>19SEP91</td><td></td><td></td><td></td></tr><tr><td>S LIMITING CONDITION CVT OPERATION FPL MOD 0344</td><td>29DEC86</td><td>20SEP91</td><td></td><td></td><td></td></tr><tr><td>S BKR LIST VERIF"N WALKDOWN OF NCRS FPL MOD 1265</td><td></td><td></td><td></td><td></td><td></td></tr><tr><td>THE COMMITMENT RELATED PORTION OF THIS MOD HAS BEEN COMPLETED PER LTR JPN-PTP-90-0190, DATED 1/19/90. THE REMAINDER OF THE WORK IS NOT CFO RELATED.</td><td></td><td></td><td>22JAN91</td><td></td><td></td></tr><tr><td>COMPLETE SATS ON PCM 89-323 DATED 6/14/90.</td><td>6FEB89</td><td>25SEP91</td><td></td><td></td><td></td></tr><tr><td>COMPLETE SATS ON PCM 89-253 DATED 9/11/90.</td><td></td><td></td><td></td><td></td><td></td></tr><tr><td>COMPLETE SATS ON PCM 90-164 DATED 2/21/91</td><td></td><td></td><td></td><td></td><td></td></tr><tr><td>4 CHEM INJECTION OF ICW TO CCW HX FPL MOD 1322</td><td>5JUN89</td><td></td><td></td><td></td><td>20OCT91</td></tr><tr><td>3 POLAR CRANE MOTORS/ENGR PACKAGE FPL MOD 0476</td><td>11JUL90</td><td></td><td></td><td></td><td>8OCT91</td></tr><tr><td>4 POLAR CRANE MOTORS/ENGR PACKAGE FPL MOD 0477</td><td>11JUL90</td><td></td><td></td><td></td><td>8OCT91</td></tr><tr><td>3 ICW UPGRADE FPL MOD 1192</td><td>1FEB90</td><td></td><td></td><td></td><td>15OCT91</td></tr><tr><td>4 BYPASS RTD ELIMINAT"N MODIFICAT"N FPL MOD 0617</td><td></td><td></td><td></td><td></td><td></td></tr><tr><td>COMPLETE SATS ON PCM 90-386 DATED 8/29/91.</td><td>16JAN90</td><td></td><td></td><td></td><td>19OCT91</td></tr><tr><td>C REG GUIDE 1.97 AUDIT PREP FPL MOD 1326</td><td>17AUG89</td><td></td><td></td><td></td><td>31OCT91</td></tr><tr><td>S ECCS HEAT SINK UPDATE FPL MOD 0362</td><td>6MAY87</td><td>25NOV91</td><td></td><td></td><td></td></tr><tr><td>C ERDADS INPUT ISOLATION ADDITIONS FPL MOD 1214</td><td></td><td></td><td></td><td></td><td></td></tr><tr><td>COMPLETE SATS ON PCM 87-310 DATED 10-31-89.</td><td>10OCT89</td><td></td><td></td><td></td><td>28NOV91</td></tr><tr><td>3 SFP DEMIN RESIN FLUSH UPGRADE FPL MOD 0956</td><td>6OCT87</td><td>13DEC91</td><td></td><td></td><td></td></tr></table>							1989	1990	1991	1992	1993	FPL						C SECONDARY SIDE HIGH-ENERGY PIPING FPL MOD 0892	13JUN88	13SEP91				C EXISTING "A" EDG IDLE START/STOP FPL MOD 0132						(14) PARTIAL SATS ON PCM 87-264 RECEIVED.	29SEP88	14SEP91				C EPS ELECTRICAL ENHANCEMENT FPL MOD 1145						(14) PARTIAL SATS ON PCM 87-264 RECEIVED.						(7) PARTIAL SATS ON PCM 87-257 RECEIVED.						(12) PARTIAL SATS ON PCM 87-258 RECEIVED.	24FEB88	14SEP91				(4) PARTIAL SATS ON PCM 87-266 RECEIVED.						(3) PARTIAL SATS ON PCM 87-266 RECEIVED.						COMPLETE SATS ON PCM 87-267 DATED 8/22/91.						3 BYPASS RTD ELIMINAT"N MODIFICAT"N FPL MOD 0616						COMPLETE SATS ON PCM 90-385 DATED 8/20/91.	16JAN90			18SEP91		4 REACTOR CAVITY HANDRAIL FPL MOD 0080	2MAR87	19SEP91				S LIMITING CONDITION CVT OPERATION FPL MOD 0344	29DEC86	20SEP91				S BKR LIST VERIF"N WALKDOWN OF NCRS FPL MOD 1265						THE COMMITMENT RELATED PORTION OF THIS MOD HAS BEEN COMPLETED PER LTR JPN-PTP-90-0190, DATED 1/19/90. THE REMAINDER OF THE WORK IS NOT CFO RELATED.			22JAN91			COMPLETE SATS ON PCM 89-323 DATED 6/14/90.	6FEB89	25SEP91				COMPLETE SATS ON PCM 89-253 DATED 9/11/90.						COMPLETE SATS ON PCM 90-164 DATED 2/21/91						4 CHEM INJECTION OF ICW TO CCW HX FPL MOD 1322	5JUN89				20OCT91	3 POLAR CRANE MOTORS/ENGR PACKAGE FPL MOD 0476	11JUL90				8OCT91	4 POLAR CRANE MOTORS/ENGR PACKAGE FPL MOD 0477	11JUL90				8OCT91	3 ICW UPGRADE FPL MOD 1192	1FEB90				15OCT91	4 BYPASS RTD ELIMINAT"N MODIFICAT"N FPL MOD 0617						COMPLETE SATS ON PCM 90-386 DATED 8/29/91.	16JAN90				19OCT91	C REG GUIDE 1.97 AUDIT PREP FPL MOD 1326	17AUG89				31OCT91	S ECCS HEAT SINK UPDATE FPL MOD 0362	6MAY87	25NOV91				C ERDADS INPUT ISOLATION ADDITIONS FPL MOD 1214						COMPLETE SATS ON PCM 87-310 DATED 10-31-89.	10OCT89				28NOV91	3 SFP DEMIN RESIN FLUSH UPGRADE FPL MOD 0956	6OCT87	13DEC91			
	1989	1990	1991	1992	1993																																																																																																																																																																																																
FPL																																																																																																																																																																																																					
C SECONDARY SIDE HIGH-ENERGY PIPING FPL MOD 0892	13JUN88	13SEP91																																																																																																																																																																																																			
C EXISTING "A" EDG IDLE START/STOP FPL MOD 0132																																																																																																																																																																																																					
(14) PARTIAL SATS ON PCM 87-264 RECEIVED.	29SEP88	14SEP91																																																																																																																																																																																																			
C EPS ELECTRICAL ENHANCEMENT FPL MOD 1145																																																																																																																																																																																																					
(14) PARTIAL SATS ON PCM 87-264 RECEIVED.																																																																																																																																																																																																					
(7) PARTIAL SATS ON PCM 87-257 RECEIVED.																																																																																																																																																																																																					
(12) PARTIAL SATS ON PCM 87-258 RECEIVED.	24FEB88	14SEP91																																																																																																																																																																																																			
(4) PARTIAL SATS ON PCM 87-266 RECEIVED.																																																																																																																																																																																																					
(3) PARTIAL SATS ON PCM 87-266 RECEIVED.																																																																																																																																																																																																					
COMPLETE SATS ON PCM 87-267 DATED 8/22/91.																																																																																																																																																																																																					
3 BYPASS RTD ELIMINAT"N MODIFICAT"N FPL MOD 0616																																																																																																																																																																																																					
COMPLETE SATS ON PCM 90-385 DATED 8/20/91.	16JAN90			18SEP91																																																																																																																																																																																																	
4 REACTOR CAVITY HANDRAIL FPL MOD 0080	2MAR87	19SEP91																																																																																																																																																																																																			
S LIMITING CONDITION CVT OPERATION FPL MOD 0344	29DEC86	20SEP91																																																																																																																																																																																																			
S BKR LIST VERIF"N WALKDOWN OF NCRS FPL MOD 1265																																																																																																																																																																																																					
THE COMMITMENT RELATED PORTION OF THIS MOD HAS BEEN COMPLETED PER LTR JPN-PTP-90-0190, DATED 1/19/90. THE REMAINDER OF THE WORK IS NOT CFO RELATED.			22JAN91																																																																																																																																																																																																		
COMPLETE SATS ON PCM 89-323 DATED 6/14/90.	6FEB89	25SEP91																																																																																																																																																																																																			
COMPLETE SATS ON PCM 89-253 DATED 9/11/90.																																																																																																																																																																																																					
COMPLETE SATS ON PCM 90-164 DATED 2/21/91																																																																																																																																																																																																					
4 CHEM INJECTION OF ICW TO CCW HX FPL MOD 1322	5JUN89				20OCT91																																																																																																																																																																																																
3 POLAR CRANE MOTORS/ENGR PACKAGE FPL MOD 0476	11JUL90				8OCT91																																																																																																																																																																																																
4 POLAR CRANE MOTORS/ENGR PACKAGE FPL MOD 0477	11JUL90				8OCT91																																																																																																																																																																																																
3 ICW UPGRADE FPL MOD 1192	1FEB90				15OCT91																																																																																																																																																																																																
4 BYPASS RTD ELIMINAT"N MODIFICAT"N FPL MOD 0617																																																																																																																																																																																																					
COMPLETE SATS ON PCM 90-386 DATED 8/29/91.	16JAN90				19OCT91																																																																																																																																																																																																
C REG GUIDE 1.97 AUDIT PREP FPL MOD 1326	17AUG89				31OCT91																																																																																																																																																																																																
S ECCS HEAT SINK UPDATE FPL MOD 0362	6MAY87	25NOV91																																																																																																																																																																																																			
C ERDADS INPUT ISOLATION ADDITIONS FPL MOD 1214																																																																																																																																																																																																					
COMPLETE SATS ON PCM 87-310 DATED 10-31-89.	10OCT89				28NOV91																																																																																																																																																																																																
3 SFP DEMIN RESIN FLUSH UPGRADE FPL MOD 0956	6OCT87	13DEC91																																																																																																																																																																																																			
DATA DATE																																																																																																																																																																																																					



1952

