

# ACCELERATED DISTRIBUTION DEMONSTRATION SYSTEM

## REGULATORY INFORMATION DISTRIBUTION SYSTEM (RIDS)

ACCESSION NBR: 9011130287 DOC. DATE: 90/11/02 NOTARIZED: NO DOCKET #  
 FACIL: 50-250 Turkey Point Plant, Unit 3, Florida Power and Light C 05000250  
 50-251 Turkey Point Plant, Unit 4, Florida Power and Light C 05000251

AUTH. NAME PLUNKETT, T.F. AUTHOR AFFILIATION Florida Power & Light Co.  
 RECIP. NAME RECIPIENT AFFILIATION

Document Control Branch (Document Control Desk)

SUBJECT: Forwards integrated schedule regulatory rept for Sept 1990.

DISTRIBUTION CODE: A001D COPIES RECEIVED: LTR 1 ENCL 1 SIZE: 17  
 TITLE: OR Submittal: General Distribution

### NOTES:

	RECIPIENT ID CODE/NAME	COPIES		RECIPIENT ID CODE/NAME	COPIES	
		LTTR	ENCL		LTTR	ENCL
	PD2-2 LA	1	1	PD2-2 PD	1	1
	EDISON, G	2	2			
INTERNAL:	NRR/DET/ECMB 9H	1	1	NRR/DOEA/OTSB11	1	1
	NRR/DST 8E2	1	1	NRR/DST/SELB 8D	1	1
	NRR/DST/SICB 7E	1	1	NRR/DST/SRXB 8E	1	1
	NUDOCS-ABSTRACT	1	1	OC/LFMB	1	0
	OGC/HDS2	1	0	<u>REG FILE 01</u>	1	1
	RES/DSIR/EIB	1	1			
EXTERNAL:	NRC PDR	1	1	NSIC	1	1

NOTE TO ALL "RIDS" RECIPIENTS:

PLEASE HELP US TO REDUCE WASTE! CONTACT THE DOCUMENT CONTROL DESK,  
 ROOM P1-37 (EXT. 20079) TO ELIMINATE YOUR NAME FROM DISTRIBUTION  
 LISTS FOR DOCUMENTS YOU DON'T NEED!

TOTAL NUMBER OF COPIES REQUIRED: LTTR 17 ENCL 15

*ms t sub*





NOV 02 1990

L-90-385

U. S. Nuclear Regulatory Commission  
Attn: Document Control Desk  
Washington, D. C. 20555

Gentlemen:

Re: Turkey Point Units 3 and 4  
Docket Nos. 50-250 and 50-251  
Integrated Schedule Regulatory Report

Attached is the September 1990 Integrated Schedule (I/S) Regulatory Report for the Turkey Point Plant. The schedules discussed in this report reflect information updated since the August 1990 Regulatory Report which was provided to the NRC on September 27, 1990 (L-90-345). There are no changes since the August report.

The scheduled start date for the Unit 4 Cycle 13 refueling, as of the date of this letter, has been changed to 11/25/90. The expected finish date has not changed. This start date change will appear on the next Integrated Schedule Report.

Should there be any questions regarding this report, please contact us.

Very truly yours,

T. F. Plunkett  
Plant Vice President  
Turkey Point Nuclear

TFP/JEK/jk

Attachment

cc: Stewart D. Ebnetter, Regional Administrator, Region II, USNRC  
Senior Resident Inspector, USNRC, Turkey Point Plant

9011130287 901102  
PDR ADOCK 05000250  
R PDC

*Handwritten:* A001  
11/11

1991

2

# TURKEY POINT UNITS 3 AND 4

## SEPTEMBER 1990 INTEGRATED SCHEDULE

The following is a summary of the I/S modifications for the September issue of the Integrated Schedule.

The September, 1990 Integrated Schedule is based on the following outages:

OUTAGE DESCRIPTION	START	FINISH
Unit 3 Diesel Tie-In.	12/09/90	10/06/91
Unit 3 Cycle 13 Refueling	08/21/92	12/04/92
Unit 3 Cycle 14 Refueling	04/01/94	06/03/94
Unit 4 Cycle 13 Refueling	11/15/90	10/27/91
Unit 4 Cycle 14 Refueling	04/01/93	06/03/93
Unit 4 Cycle 15 Refueling	10/01/94	12/03/94

Changes to the Integrated Schedule since the last issue of the Regulatory Report to the NRC, May 1990 (L-90-114 dated March 28, 1990), are as follows:

### NRC COMMITTED MODIFICATIONS ADDED

<u>I/S #</u>	<u>UNIT - DESCRIPTION</u>	<u>LIC</u> <u>CAT</u>
- - -	NONE - - -	

### NRC COMMITTED MODIFICATIONS COMPLETED

<u>I/S #</u>	<u>UNIT - DESCRIPTION</u>	<u>LIC</u> <u>CAT</u>
- - -	NONE - - -	

### NRC COMMITTED MODIFICATIONS CANCELED

<u>I/S #</u>	<u>UNIT - DESCRIPTION</u>	<u>LIC</u> <u>CAT</u>
- - -	NONE - - -	

### NRC MODIFICATIONS WITH FORECAST COMPLETION DATES BEYOND THEIR COMMITTED DATES

<u>I/S #</u>	<u>UNIT - DESCRIPTION</u>	<u>LIC</u> <u>CAT</u>	<u>JULY</u> <u>1990</u>	<u>AUG</u> <u>1990</u>	<u>NRC DATE</u> <u>FEB 1990</u>
- - -	NONE - - -				

PROJECT ALMEGA99 PLOT CFO PAGE 1 SHEET 1		TURKEY POINT NUCLEAR PLANT INTEGRATED SCHEDULE FLORIDA POWER AND LIGHT CO		MODE 1/F1 INTERVAL 1 YEAR(S)		TARGET SCHEDULE 30 TARG FINISH 17MAY95 TARG DATA DATE 29NOV88		RUN 28SEP90 13:14 PROJECT#2 8683 SCHEDULE BAR CHART	
START 2JAN84 FINISH 30DEC95 DATA DATE 18SEP90		TARGET SCHEDULE LINE BREAK ON NRC COMMITMENT CATEGORIES LINE BREAK ON CFO SUB-SYSTEM		SORT BREAKS BCODES 9		CUR EF			

			1989	1990	1991	1992	1993
CFO	POST TMI CONFIRMATORY MODIFICAT"N	C AREA RADIATION MONIT"G SYST REPL CFO MOD 0341			11FEB91	23AUG91	
	P04-T11.20 U4 SEL SYS MODS/REPAIRS	C EDG AIR START MOTORS UPGRADE CFO MOD 0576	18JUL86		22JUN91	27OCT91	
	POST PEP	4 RHR-INSTL UPGRADED 8" GLOBE VLV CFO MOD 0565	5FEB88		22FEB91	27OCT91	

NOTES:

↓

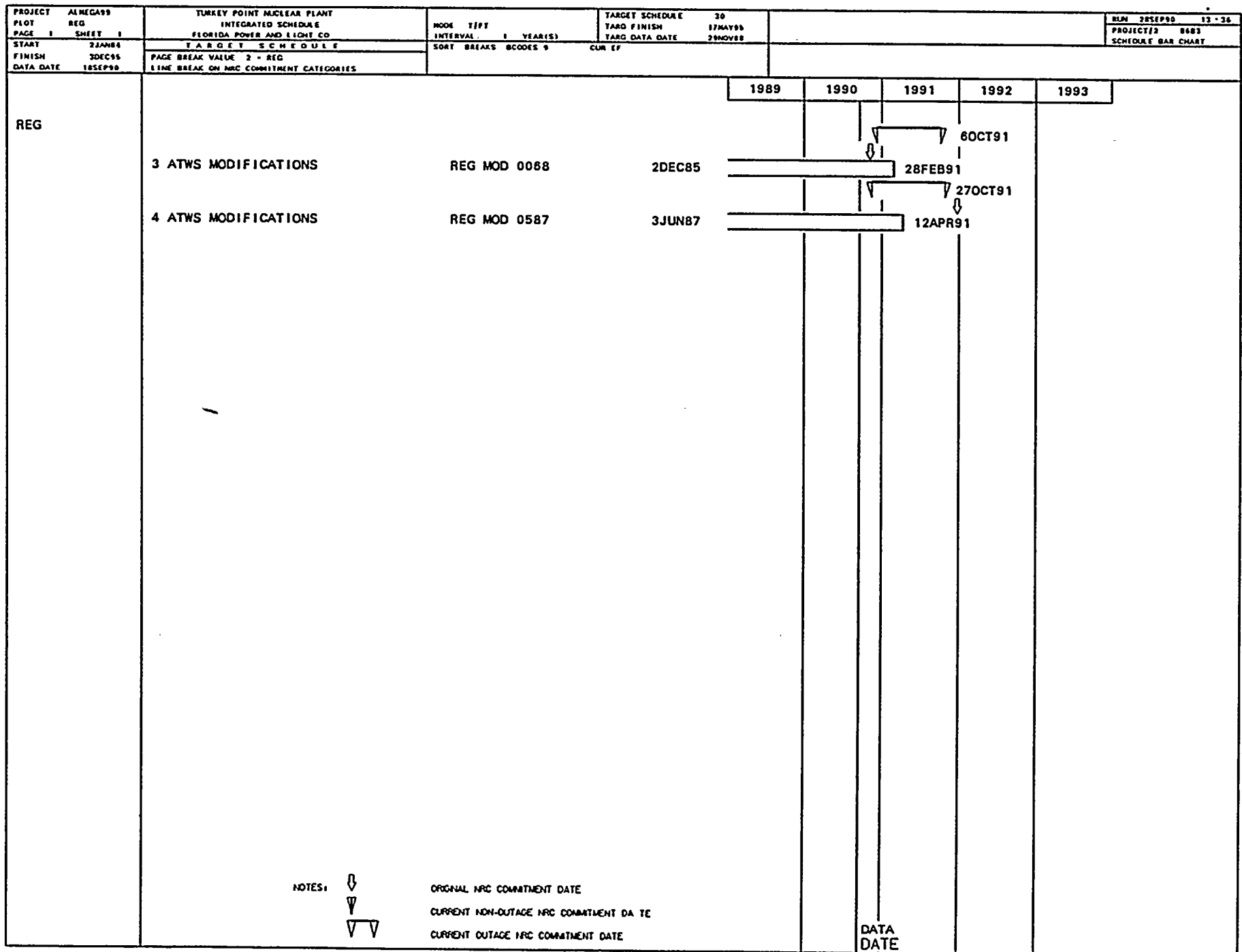
▽

▽▽

ORIGINAL NRC COMMITMENT DATE  
CURRENT NON-OUTAGE NRC COMMITMENT DATE  
CURRENT OUTAGE NRC COMMITMENT DATE

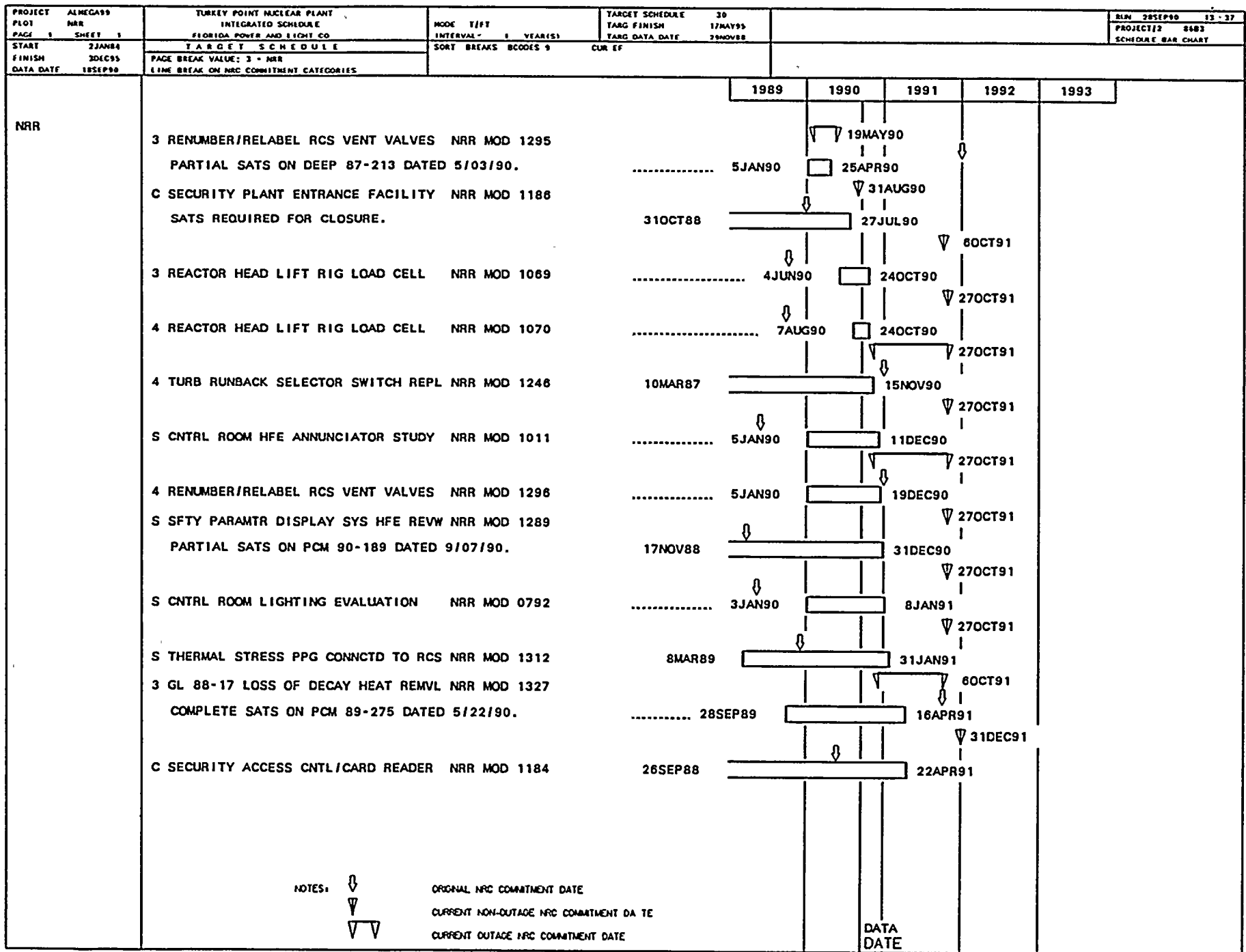
DATA DATE





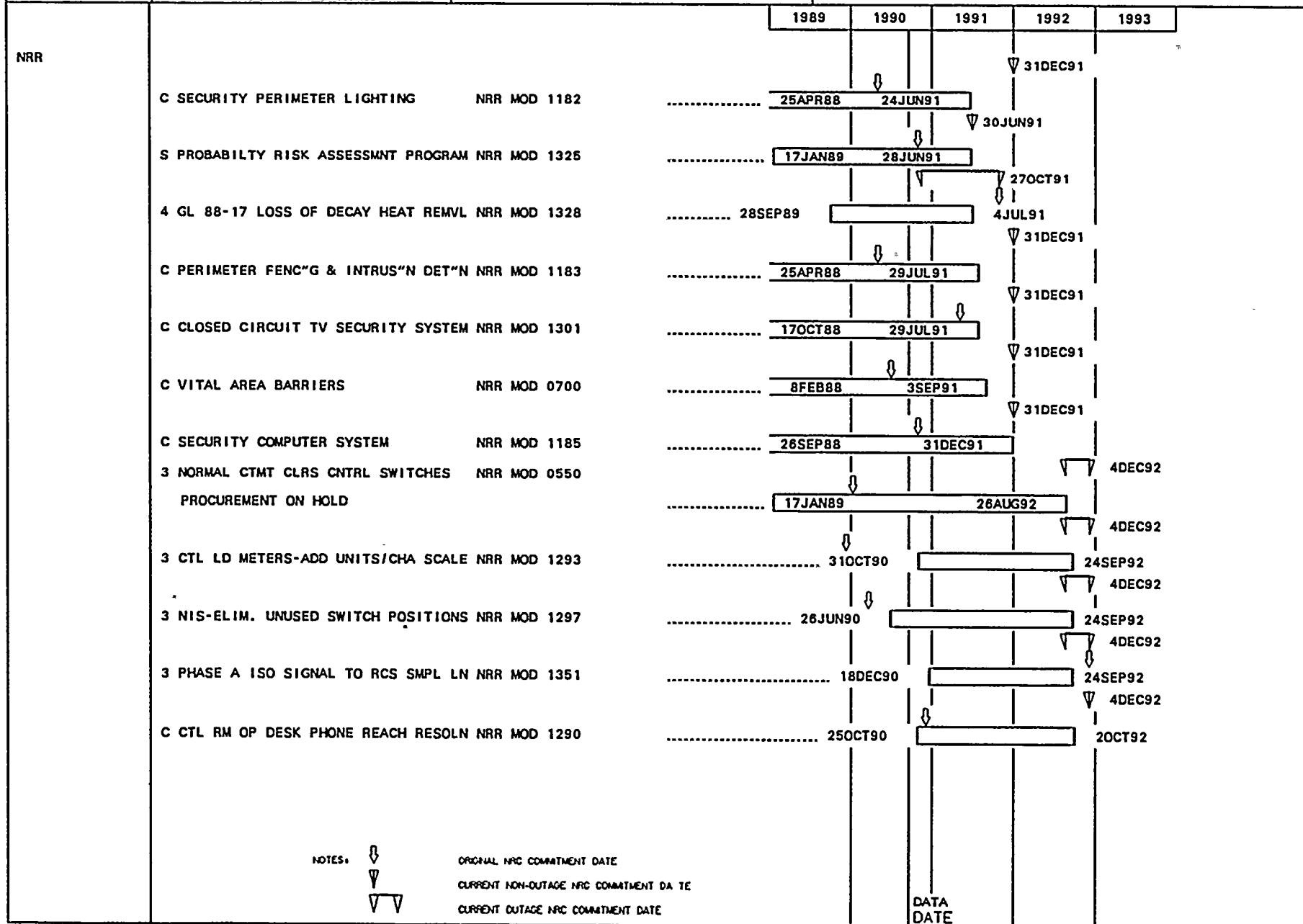




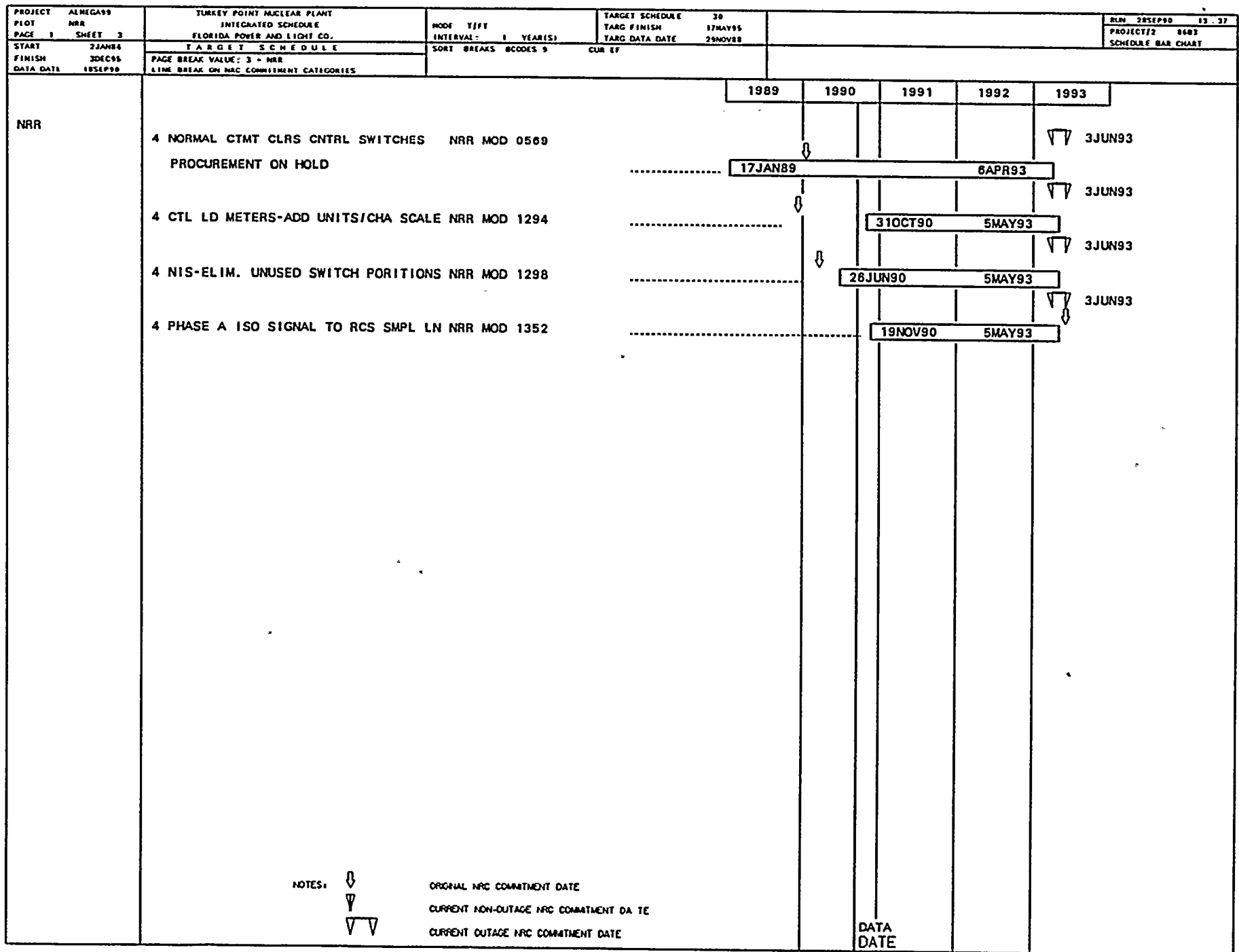




PROJECT ALNEGASS PLOT NRR PAGE 1 SHEET 2	TURKEY POINT NUCLEAR PLANT INTEGRATED SCHEDULE FLORIDA POWER AND LIGHT CO.	MODE T/F/T INTERVAL 1 YEAR(S)	TARGET SCHEDULE TARG FINISH 30 17MAY95 TARG DATA DATE 28NOV88	BLN 28SEP90 13:37 PROJECT#2 8683 SCHEDULE BAR CHART
START 22JAN84 FINISH 30DEC95 DATA DATE 18SEP90	TARGET SCHEDULE PAGE BREAK VALUE: 3 - NRR LINE BREAK ON NRC COMMITMENT CATEGORIES	SORT BREAKS BCODES 9	CUR EF	









11  
12  
13  
14  
15  
16  
17  
18  
19  
20  
21  
22  
23  
24  
25  
26  
27  
28  
29  
30  
31  
32  
33  
34  
35  
36  
37  
38  
39  
40  
41  
42  
43  
44  
45  
46  
47  
48  
49  
50  
51  
52  
53  
54  
55  
56  
57  
58  
59  
60  
61  
62  
63  
64  
65  
66  
67  
68  
69  
70  
71  
72  
73  
74  
75  
76  
77  
78  
79  
80  
81  
82  
83  
84  
85  
86  
87  
88  
89  
90  
91  
92  
93  
94  
95  
96  
97  
98  
99  
100

11

12

13

14

15

16

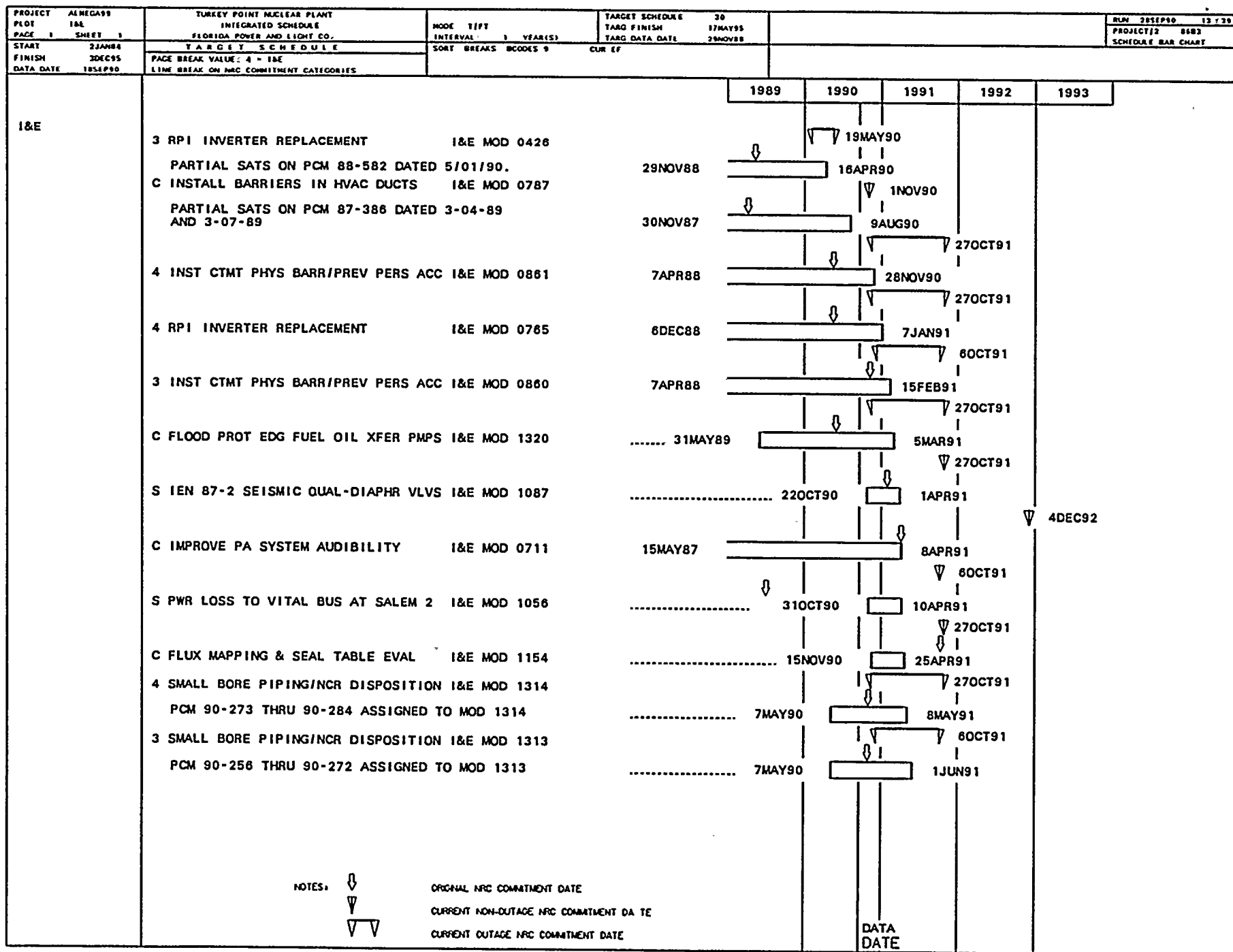
17  
18  
19

20

21

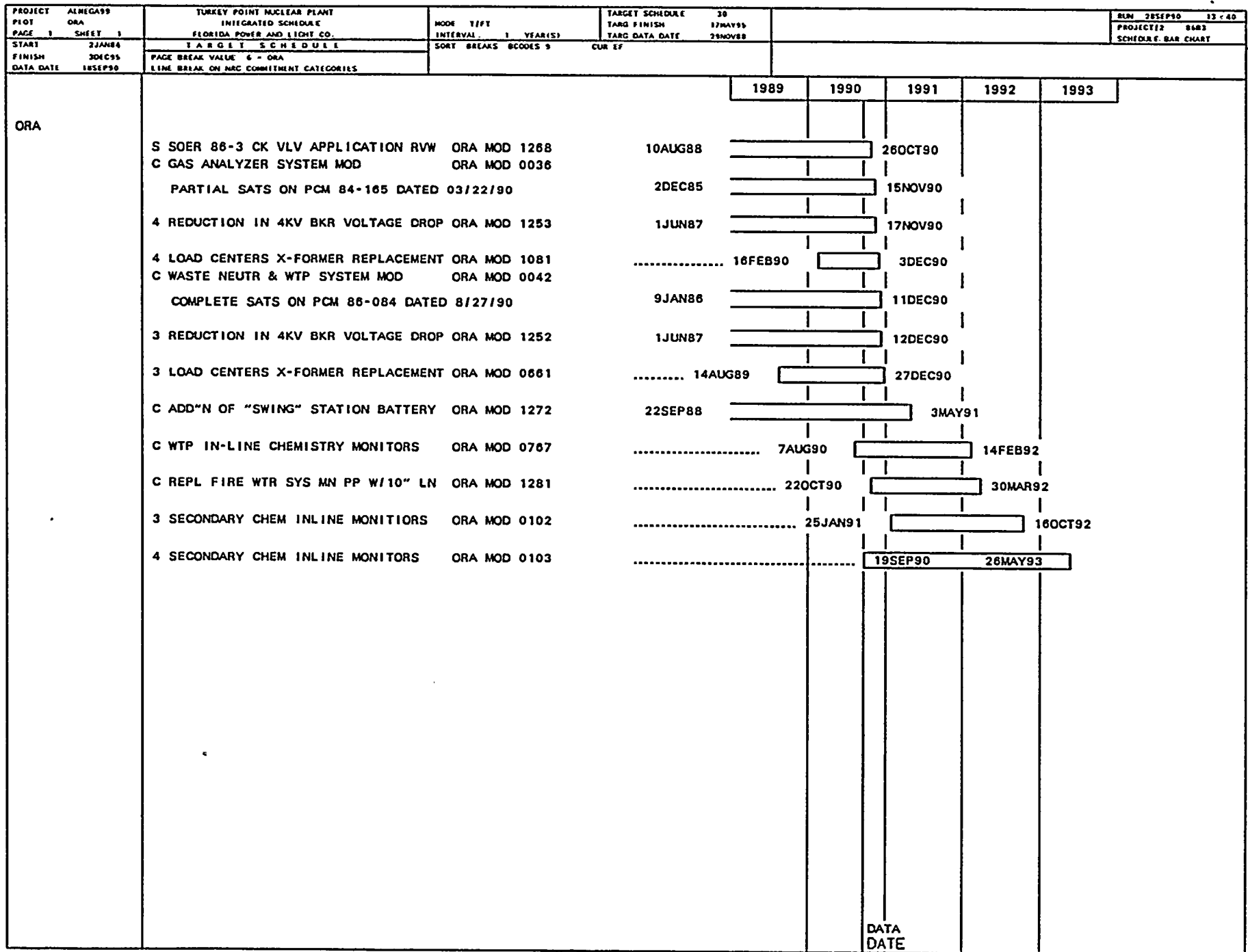
22

23











1  
2  
3  
4  
5  
6  
7  
8  
9  
10  
11  
12  
13  
14  
15  
16  
17  
18  
19  
20  
21  
22  
23  
24  
25  
26  
27  
28  
29  
30  
31  
32  
33  
34  
35  
36  
37  
38  
39  
40  
41  
42  
43  
44  
45  
46  
47  
48  
49  
50  
51  
52  
53  
54  
55  
56  
57  
58  
59  
60  
61  
62  
63  
64  
65  
66  
67  
68  
69  
70  
71  
72  
73  
74  
75  
76  
77  
78  
79  
80  
81  
82  
83  
84  
85  
86  
87  
88  
89  
90  
91  
92  
93  
94  
95  
96  
97  
98  
99  
100

1

2

3

4

5

6

7

8

9

10

11

12

13

14

15

16

17

18

19

20

21

22

23

24

25

26

27

28

29

30

31

32

33

34

35

36

37

38

39

40

41

42

43

44

45

46

47

48

49

50

51

52

53

54

55

56

57

58

59

60

PROJECT PLOT PAGE 1 SHEET 1	ALMEGA99 FPL	TURKEY POINT NUCLEAR PLANT INTEGRATED SCHEDULE FLORIDA POWER AND LIGHT CO.	MODE T/F/T INTERVAL 1 YEAR(S)	TARGET SCHEDULE TARG FINISH 30 17MAY95 TARG DATA DATE 29NOV88	RUN 28SEP90 12:41 PROJECT 12 8683 SCHEDULE BAR CHART						
START 22AN84 FINISH 30KC95 DATA DATE 18SEP90	Y A R G E T S C H E D U L E PAGE BREAK VALUE 5 - FPL LINE BREAK ON NRC COMMITMENT CATEGORIES	SORT BREAKS BC0045 9 CUR LF									
<table><tr><td></td><td>1989</td><td>1990</td><td>1991</td><td>1992</td><td>1993</td></tr></table>							1989	1990	1991	1992	1993
	1989	1990	1991	1992	1993						
FPL	3 MAIN STM SAFETY LIFTING LEVERS FPL MOD 0422										
	SATS REQUIRED FOR CLOSURE.	17APR88	27FEB89								
	4 CCW HEAT EXCHANGER REPLACEMENT FPL MOD 1280										
	COMPLETE SATS ON PCM 88-263 DATED 9/19/90.	27JUN88	22MAR89								
	4 STM GENERATOR J NOZZLE REPLACEMNT FPL MOD 1274										
	NEED SATS FOR CLOSURE	28JUN88	2MAY89								
	4 CONDENSER INLET WATERBOX REPAIR FPL MOD 1288										
	WORK PERFORMED UNDER DEEP 88-344	14SEP88	22MAY89								
	PARTIAL SATS ON DEEP 88-344 DATED 05-04-89										
	4 MOV FAIL DUE TO IMPROPER SW SETTING FPL MOD 1110										
	THE COMMITMENT RELATED PORTION OF THIS MODIFICATION WAS COMPLETED IN MARCH 1989.	15JAN87	11JUN89								
	THE REMAINDER OF THE WORK IS NOT I&E RELATED.		1JUN89								
	PARTIAL SATS ON PCM 87-006 & 87-009 -04-MAR-89										
	4 REPLACE LOW PRESSURE ROTORS FPL MOD 0067										
	PARTIAL SATS ON PCM 87-205 DATED 05-23-89.	31OCT84	12JUN89								
	C ELECT DWG SEPARATION & RENUMBERING FPL MOD 1095										
	PARTIAL SATS ON PCM 87-279 DATED 04-13-89.	5JUN87	13JUN89								
	4 REPL EXTR STM CS PPG W/ CR MOLY FPL MOD 1262										
	COMPLETE SATS ON PCM 88-302 DATED 9/05/90.	15JUL88	13JUN89								
	3 RHR PUMPS SEAL UPGRADE FPL MOD 1172										
	PARTIAL SATS ON PCM 88-077 DATED 03/28/90	31AUG87	23MAR90								
	3 PZR RLF LN SNUBBER REPLACEMENT FPL MOD 1267										
	PARTIAL SATS ON PCM 89-046 DATED 04/16/90	5OCT88	18APR90								
	3 MSIV AIR OPERATOR BACKUP N2 SYST FPL MOD 0267										
	SATS REQUIRED FOR CLOSURE.	2DEC85	23APR90								
	3 ATMOSPHERIC DUMP VLV REPLACEMENT FPL MOD 1259										
	PARTIAL SATS ON PCM 88-517 DATED 05-11-90 AND 07-16-90	3MAY88	21MAY90								
	3 SGWL CNTMT ISOLATING VLV REPLACEMENT FPL MOD 0293										
	PARTIAL SATS ON PCM 86-077 DATED 6/13/90 AND 8/22/90.	21MAR86	22MAY90								
	4 ADD & RELOCATE AFW N2 SUPPLY FPL MOD 0216										
	COMPLETE SATS ON PCM 85-176 DATED 06-27-87.	2DEC85	29JUN90								
	COMPLETE SATS ON PCM 88-045 DATED 04-04-88.										
	PARTIAL SATS ON PCM 88-164 DATED 04-21-89.										
	3 INSPECT/REPAIR INTAKE STRUCTURE FPL MOD 1348	..... 30OCT89	25JUL90								
	3 ADD'L CNTMT ELECT PENETRATIONS FPL MOD 0549										
	COMPLETE SATS ON PCM 89-335 DATED 9/10/90.	15FEB89	21AUG90								
	3 MSR MODERNIZATION REPLACEMENT FPL MOD 0050										
	COMPLETE SATS ON PCM 85-132 DATED 9/19/90.	2DEC85	22AUG90								
			DATA DATE								

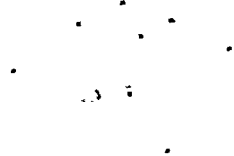


PROJECT ALMEGA99		TURKEY POINT NUCLEAR PLANT		MODE T/FT		TARGET SCHEDULE 38		RUN 28SEP90 12:41	
PLOT FPL		INTEGRATED SCHEDULE		INTERVAL 1 YEAR(S)		TARG FINISH 17MAY95		PROJECT/2 8483	
PAGE 1 SHEET 2		FLORIDA POWER AND LIGHT CO.				TARG DATA DATE 29NOV88		SCHEDULE BAR CHART	
START 22JAN84		T A R G E T S C H E D U L E		SORT BREAKS 800015 9		CUR EF			
FINISH 30DEC95		PAGE BREAK VALUE 5 - FPL							
DATA DATE 18SEP90		LINE BREAK ON NRC COMMITMENT CATEGORIES							

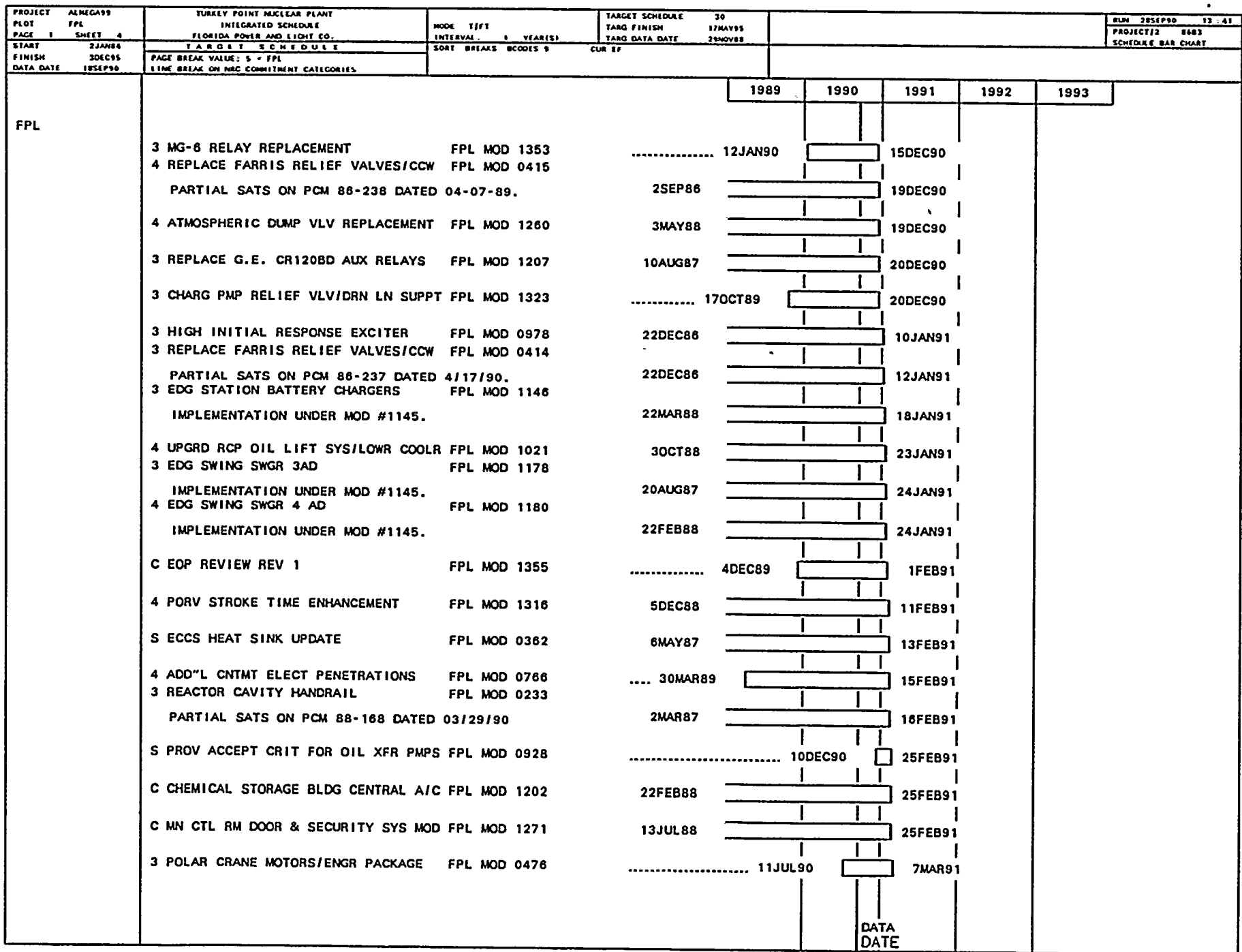


PROJECT PLOT PAGE 1 SHEET 3	ALMEGA99 FPL	TURKEY POINT NUCLEAR PLANT INTEGRATED SCHEDULE FLORIDA POWER AND LIGHT CO.	MODE T/FT INTERVAL 1 YEAR(S)	TARGET SCHEDULE TARG FINISH 30 17MAY95 TARG DATA DATE 29NOV88	RUN 28SEP90 13-41 PROJECT 12 8683 SCHEDULE BAR CHART			
START FINISH DATA DATE	21JAN84 30DEC95 18SEP90	T A R G E T S C H E D U L E PAGE BREAK VALUE, 5 - FPL LINE BREAK ON NRC COMMITMENT CATEGORIES	SORT BREAKS BCODES 9 CUR 1F					
FPL				1989	1990	1991	1992	1993
	4 SFP DEMIN RESIN FLUSH UPGRADE FPL MOD 1155	19OCT87				8NOV90		
	3 SFP DEMIN RESIN FLUSH UPGRADE FPL MOD 0956	6OCT87				12NOV90		
	C PASS CHLORIDE ANALYZER REPLACMNT FPL MOD 1319							
	PARTIAL SATS ON PCM 89-141 DATED 9/13/90.	..... 31MAY89				15NOV90		
	4 MAIN FEED CV 2011 CLOSING TIME FPL MOD 1102	9MAR88				17NOV90		
	4 SFP BRIDGE CRANE REPLACEMENT FPL MOD 0744	4FEB88				20NOV90		
	4 REPLACE SI CHK VLVS 4-874A & B FPL MOD 1356	..... 27DEC89				20NOV90		
	4 NORM CNTMT CLRS CAPACITY INCREASE FPL MOD 0903							
	PARTIAL SATS ON PCM 87-026 DATED 04-22-89.	7APR88				21NOV90		
	4 MG-6 RELAY REPLACEMENT FPL MOD 1354	..... 13FEB90				21NOV90		
	4 REACTOR CAVITY HANDRAIL FPL MOD 0080	2MAR87				26NOV90		
	4 MSIV SAFETY REL AIR ACCUM SYS FPL MOD 1258							
	PARTIAL SATS ISSUED 5/24/89. NCR N89-0693, WHICH IS NOT AN OPERABILITY CONCERN, WILL BE COMPLETED DURING THE NEXT OUTAGE OF SUFFICIENT DURATION.	10MAY88			11JUN89	26NOV90		
	S STORM STUDY/PLANT DRAINAGE EVAL FPL MOD 1360	..... 20FEB90			23JUL90	27NOV90		
	4 CHARG PMP RELIEF VLV/DRN LN SUPPT FPL MOD 1324	..... 17OCT89				29NOV90		
	3 SFP BRIDGE CRANE REPLACEMENT FPL MOD 0745	20JAN88				30NOV90		
	C EDG HC TURBO/IDLE GEAR STUB SHAFT FPL MOD 0509	16MAR88				3DEC90		
	C HP WORK AREA AND N.O. WORK AREA FPL MOD 0378	..... 18SEP89				5DEC90		
	C CONTROL ROOM HABITABILITY HVAC FPL MOD 0014							
	THE COMMITMENT RELATED PORTION OF THIS MODIFICATION HAS BEEN COMPLETED. ENHANCEMENTS TO THE CONTROL ROOM HVAC SYST. BEYOND 17 JUN 88 ARE NOT CFO RELATED.	2JAN85				10DEC90		
	3 NORM CNTMT CLRS CAPACITY INCREASE FPL MOD 0902							
	PARTIAL SATS ON PCM 87-025 DATED 07-16-90	23JAN89				15DEC90		
	3 PORV STROKE TIME ENHANCEMENT FPL MOD 1315							
	PARTIAL SATS ON PCM 89-565 DATED 04/16/90	24OCT88				15DEC90		



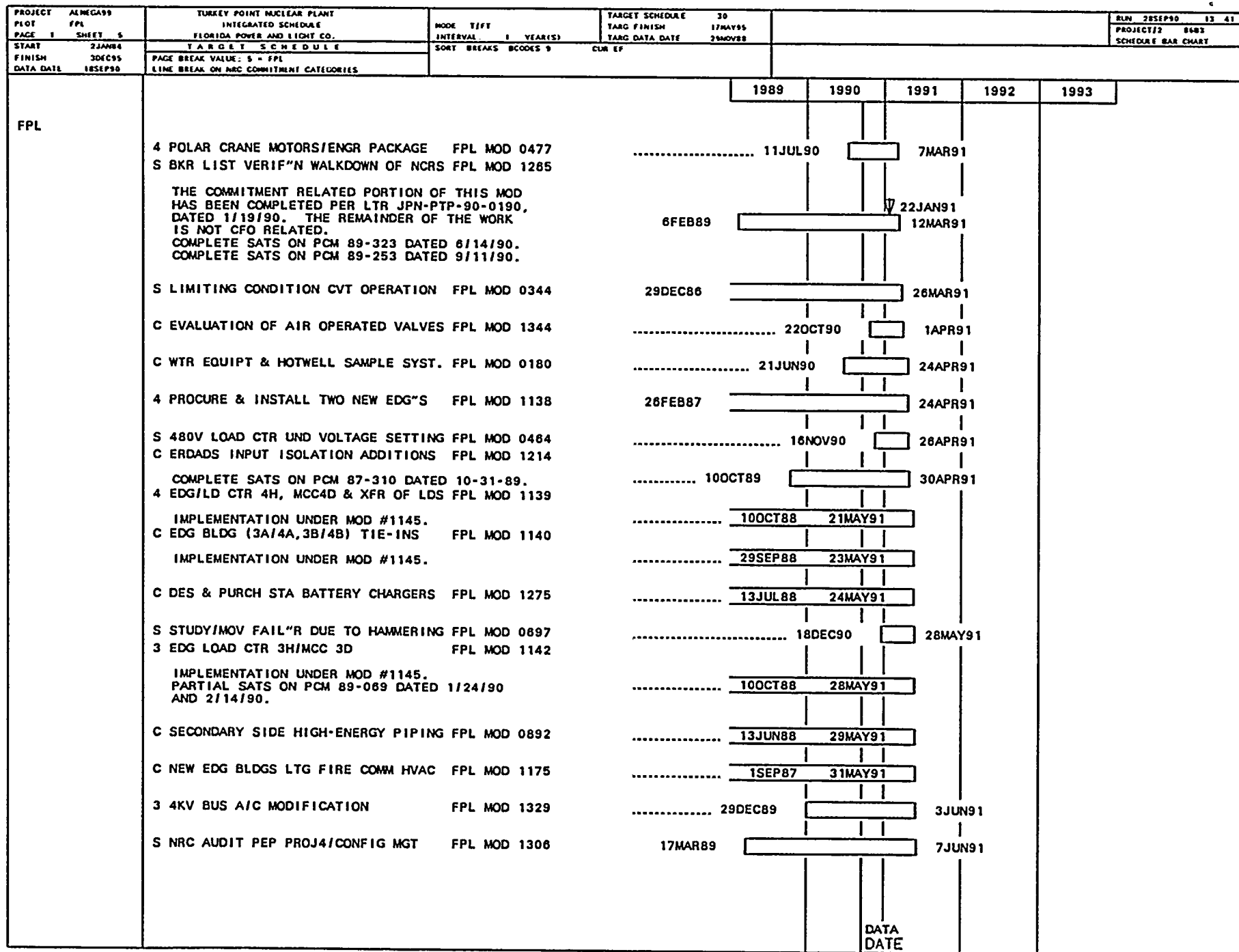


24



DATA  
DATE







PROJECT PLOT PAGE 1 SHEET 6	ALMEGA99 FPL	TURKEY POINT NUCLEAR PLANT INTEGRATED SCHEDULE FLORIDA POWER AND LIGHT CO.	MODE T/FT INTERVAL 1 YEAR(S)	TARGET SCHEDULE TARG FINISH 17MAY95 TARG DATA DATE 29NOV88	30	RUN 28SEP90 13:41
START FINISH DATA DATE 18SEP90	22JAN84 30DEC95	TARGET SCHEDULE PAGE BREAK VALUE: 5 = FPL LINE BREAK ON NRC COMMITMENT CATEGORIES	SORT BREAKS BCODES 9	CUR EF		PROJECT 12 8482 SCHEDULE BAR CHART
FPL	C BORIC ACID CONCENTRATION REDUCTN FPL MOD 1311					
	NRC ISSUE TECH SPEC AMENDMENT SCHEDULED FOR 17-APR-91.					
	C EDG DIESEL/D.O.S.T. BLDG CONST FPL MOD 1174					
	PARTIAL SATS DATED 1/04/90 ON PCM 87-259					
	C ADD FUSE SPEC TO BKR LIST & DWGS FPL MOD 1254					
	3 BYPASS RTD ELIMINAT"N MODIFICAT"N FPL MOD 0616					
	NRC REVIEW AND APPROVAL OF LICENSING REPORT SCHEDULED TO COMPLETE 22 FEB 91.					
	4 BYPASS RTD ELIMINAT"N MODIFICAT"N FPL MOD 0617					
	NRC REVIEW AND APPROVAL OF LICENSING REPORT SCHEDULED TO COMPLETE 22 FEB 91.					
	C UNDERSZD NZZL-SHLL JOINTS-TNK HX FPL MOD 1343					
	C EXISTING "A" EDG IDLE START/STOP FPL MOD 0132					
	C EXISTING "B" EDG IDLE START/STOP FPL MOD 1001					
	C NEW EDG PROJ SITE PREPARATION FPL MOD 1137					
	PARTIAL SATS DATED 1/04/90 ON PCM 87-212					
	4 4KV BUS A/C MODIFICATION FPL MOD 1330					
	C INVERTER RM HVAC UPGRADE/PERM FIX FPL MOD 1218					
	C REVIEW WEJ-IT EXPANSION ANCHORS FPL MOD 0586					
	C EPS ELECTRICAL ENHANCEMENT FPL MOD 1145					
	C FIRE PUMP DIESEL ENGINE UPGRADE FPL MOD 0191					
	3 C BUS XFMR DELUGE SYS ALARM FPL MOD 0654					
	3 CHARG PUMP SUCTN QUICK DISCONNECT FPL MOD 0431					
	3 MSR INSTRUMENTATION FPL MOD 1010					
	C WASTE GAS SYS UPGRADE PROGRAM FPL MOD 0768					
	C PASS DSLVD HYD MON/LIQ SMPL UPGRD FPL MOD 1337					



11

12

13

14

15

16

17

18

19

20

21

22

23

24

25

26

27

28

29

30

31

32

33

34

35

36

37

38

39

40

41

42

43

44

45

46

47

48

49

50

51

52

53

54

