


United States Nuclear Regulatory Commission Official Hearing Exhibit	
In the Matter of:	FLORIDA POWER & LIGHT CO. (Turkey Point Nuclear Generating Units 6 and 7)
	<b>Commission Mandatory Hearing</b>
	Docket #: 05200040   05200041
	Exhibit #: NRC-008D-E-MA-CM01
	Admitted: 12/12/2017
	Rejected:
	Other:
	Identified: 12/12/2017 Withdrawn: Stricken:

NRC-008D-E

## Supplemental Information 7

### The State of Florida Radiological Emergency Preparedness Annex, Appendix II, Turkey Point Nuclear Power Plant Site Plan

## TURKEY POINT NUCLEAR POWER PLANT SITE PLAN

<b>TABLE OF CONTENTS</b>	<b>PAGE</b>
<b>GENERAL</b> .....	II-1
<b>Organization and Responsibilities</b> .....	II-1
Miami-Dade County Organizations and Responsibilities .....	II-1
Monroe County Organizations and Responsibilities .....	II-6
Collier County Organizations .....	II-9
Broward County Organizations .....	II-9
Emergency Support Function 6 (Mass Care) .....	II-10
State Division of Emergency Management .....	II-10
Emergency Support Function 8 (Health) .....	II-10
Florida Power & Light .....	II-11
<b>Direction and Control for Initial Radiological Response</b> .....	II-11
Miami-Dade County .....	II-11
Monroe County .....	II-12
<b>Emergency Classification System</b> .....	II-12
<b>Notification and Activation</b> .....	II-12
Notification of Unusual Event .....	II-12
Alert .....	II-13
Site Area Emergency .....	II-13
General Emergency .....	II-14
<b>Notification of Public</b> .....	II-14
<b>Emergency Communication</b> .....	II-15
Miami-Dade County .....	II-15
Monroe County .....	II-17
Test Schedule for Emergency Communications Equipment .....	II-18
<b>Public Information</b> .....	II-18
Public Education .....	II-18
Media Education .....	II-18
Emergency News Releases .....	II-19
Rumor Control .....	II-19
<b>Emergency Facilities and Equipment</b> .....	II-19
Miami-Dade County Emergency Operation Center .....	II-19
Monroe County Emergency Operation Center .....	II-19
Licensee Emergency Operation Facility .....	II-20
Emergency News Center .....	II-20
Evacuation Shelters .....	II-20
Radiological Facilities .....	II-20
Local Resources to Support the Federal Emergency Response .....	II-21



## TURKEY POINT NUCLEAR POWER PLANT SITE PLAN

<b>TABLE OF CONTENTS (Continued)</b>	<b>PAGE</b>
<b>Accident Assessment</b> .....	II-21
<b>Radiological Exposure Control</b> .....	II-22
<b>Protective Response</b> .....	II-24
Protective Action Guides .....	II-24
Potassium Iodide .....	II-24
Control of Entrance into Affected Areas .....	II-25
Sheltering (In Place) .....	II-25
Evacuation .....	II-25
Evacuation Areas and Route Descriptions .....	II-26
Monitoring and Decontamination .....	II-30
Reception and Care.....	II-30
Shelter Facilities .....	II-31
Control of Foodstuff .....	II-31
<b>Medical and Public Health Support</b> .....	II-32
<b>Recovery and Re-entry</b> .....	II-33
<b>Exercises and Drills</b> .....	II-33
<b>Radiological Emergency Response Training</b> .....	II-33
<b>Figures Table of Contents</b> .....	II-34

**TURKEY POINT NUCLEAR POWER PLANT SITE PLAN**

---

**I. General**

The purpose of this Appendix is to provide for the health, safety and welfare of Florida residents and visitors who would be affected by a radiological emergency at the Turkey Point Nuclear Power Plant. The Turkey Point Nuclear Power Plant is located in Miami-Dade County. It is adjacent to the northern portion of Monroe County known as the Upper Keys. This facility is owned and operated by the Florida Power and Light Company.

Parts of Miami-Dade and Monroe counties lie within the 10-mile plume exposure pathway and are risk counties. The majority of the Monroe County population within the plume exposure pathway are residents of a private community known as Ocean Reef. Another portion of the population within the 10-mile emergency planning zone is the residents and transients located on offshore islands. Miami-Dade and Monroe counties will also serve to host any evacuees from the 10-mile emergency planning zone should evacuation be necessary. A map of the 10-mile plume exposure pathway is attached as Figure II-1.

All or parts of Miami-Dade, Monroe, Collier and Broward counties lie within the ingestion pathway zone. A map of the 50-mile ingestion pathway zone is attached as Figure II-2.

**II. Organizations and Responsibilities**

The local organizations with radiological emergency responsibilities for an emergency at the Turkey Point Nuclear Power Plant are identified in the following sections. Each organization is responsible for assuring continuity of resources to support 24-hour operations for a protracted period. Each emergency response organization or sub-organization having an operations role is responsible for developing its own standard operating procedures, which describe its concept of operations and its relationship to the total effort. These responsibilities and organizations are graphically represented in Figures II-3 through II-6 of this Appendix.

In addition, each county jurisdiction of the State of Florida is authorized in Sections 252.35, 252.37, and 252.60 of the Florida Statutes to participate in cooperative relationships to accept services, equipment, supplies, materials, or funds for emergency management efforts.

**A. Miami-Dade County Organizations and Responsibilities**

**1. Miami-Dade County Incident Commander**

The Miami-Dade County Mayor or designee (the Director, Miami-Dade Department of Emergency Management) is responsible for overall radiological emergency response planning for Miami-Dade County and for assuring the accuracy of applicable portions of the Turkey Point Response Plan. It is his/her responsibility to initiate actions and provide direction and control at the local level to include protection of the public and emergency operations to respond to the effects of a radiological emergency. The County Mayor or designee is responsible for assuring continuity of resources to assure 24-hour operations for a protracted

**TURKEY POINT NUCLEAR POWER PLANT SITE PLAN**

---

period and for coordinating with federal, State and local government response agencies.

The County Mayor or designee, acting upon the recommendation of State Emergency Support Function 8 Health and Medical Services is responsible for authorizing Miami-Dade County emergency workers to incur radiological exposures in excess of 500 mR. In no case will this exceed the dose recommended in protective action guides for emergency workers contained in EPA 400-R 92-001.

Miami-Dade Public Information Officers will provide emergency public information and instructions in coordination with the State and licensee public information officers at the emergency news center.

**2. Director, Miami-Dade Department of Emergency Management**

The Director is responsible for the coordination, development and maintenance of procedures to implement required portions of this Plan consistent with existing conditions and procedures. The Director will also provide input for annual revision by the Division of Emergency Management. The Director or his/her designee will be responsible for coordinating emergency operations at the local level and keeping local government officials and emergency response units apprised of the status of the operation.

The Director is responsible for early warning and notification of the population within the 10-mile emergency planning zone in Miami-Dade County.

The Director is also responsible for the notification of the county emergency operations center staff, activating the emergency operations center, and notifying all local governmental and non-governmental agencies supporting emergency operations as appropriate to the emergency class.

The Director will coordinate overall emergency operations and support needs with the State Division of Emergency Management, State and federal support agencies, and Florida Power and Light Company.

**3. Miami-Dade Police Department**

The Police Department's responsibilities during a radiological emergency include:

- a. Notification of residents and transients in affected areas
- b. Provision of traffic control along evacuation routes
- c. Crowd control at reception centers and shelters
- d. Provisions of evacuation area security to residents within affected areas

**TURKEY POINT NUCLEAR POWER PLANT SITE PLAN**

---

- e. Provisions of patrol boats for off-shore coordination and evacuation
- f. Provisions of aerial support as appropriate

**4. Municipal Police Departments**

Municipal police departments will assist the Miami-Dade Police Department in notifying residents and transients in the affected area and assist in traffic control along evacuation routes.

**5. Miami-Dade Fire Department**

The Miami-Dade Fire Department Communication Bureau is the designated after-hours contact for emergency management. Responsibilities for Miami-Dade Fire Department during a radiological emergency include:

- a. Activation of the siren/public address systems during off-duty hours of the Office of Emergency Management
- b. Fire suppression and rescue services at Turkey Point if requested by the licensee
- c. The provision of radiation monitoring of evacuees, emergency workers, and emergency worker and vehicles washdown
- d. On-scene incident commander at all the reception center sites

**6. Miami-Dade County Health Department**

The Director of the Miami-Dade County Health Department is responsible for emergency medical operations (including screening of evacuees at monitoring and decontamination stations for potentially hazardous health problems), assigning evacuees to appropriate facilities for radiological exposure care, and for coordinating medical services for evacuees in shelters. The County Mayor or designee (Director of the Department of Emergency Management) is responsible for selecting and implementing protective actions to preserve the health and safety of the residents and visitors to Miami-Dade County. The Director, Miami-Dade County Department of Health, as well as representatives from Florida Power and Light and the Bureau of Radiation Control, will recommend protective actions in any instance where the measured or projected exposure to the public intersects the exposure limits established by the Environmental Protection Agency. Miami-Dade County decision-makers are not bound by Florida Power and Light's recommendation. Other duties include the coordination and provision of health care to evacuees and emergency workers (refer to Chapters 10, 11 and 12 of this Annex).

The County Health Department will provide the following services in support of emergency operations in the reception centers and shelter facilities:

- a. Health services and disease prevention and control measures

**TURKEY POINT NUCLEAR POWER PLANT SITE PLAN**

---

- b. Sanitation, personal hygiene services, and waste disposal
- c. Procurement of medical service support

The County Health Department will coordinate with and assist State Emergency Support Function 8 on radiological assessment in accordance with Chapter 10 of this Annex to include the administration of potassium iodide to designated individuals if deemed necessary and directed by proper authorities.

The county health department will ensure the provision of necessary health orders, restrictions, and emergency information to evacuees housed in reception and shelter facilities, as well as the general population of Miami-Dade County to facilitate disease prevention and control measures, sanitation and waste disposal, safe food and water supply and distribute potassium iodide to members of the general public

The county health department will also maintain communications with the department's personnel in the Miami-Dade County emergency operations center, and coordinate support needs and operations with other agencies.

The health physicist from the Miami-Dade County Health Department and members of the Turkey Point Radiological Emergency Response Team (Florida Department of Health Bureau of Radiation Control health physicists) will provide offsite accident assessment until additional State Emergency Response Team personnel arrive and are operational at the emergency operations facility. They may be assisted by county fire monitoring personnel, if required.

**7. Public Works Department**

The Public Works Department will assist the Miami-Dade Police Department in evacuation operations by providing special traffic signal timing along evacuation routes and monitoring evacuation progress. The Public Works Department is also responsible for reviewing traffic volume and roadway capacity data for evacuation routes and for recommending changes in evacuation routes to ensure the smooth flow of evacuees. Additional heavy equipment, personnel and other services may be provided as required.

**8. Miami-Dade Transit Agency**

The Miami-Dade Transit Agency is responsible for providing evacuation transportation to residents without access to personal vehicles. Miami-Dade Transit may also provide emergency bus transportation to assist in the evacuation of hospitals, nursing homes, and schools. The Agency functions as primary backup for evacuating people with special needs using the Special Transportation Services network as instructed by the Department of Emergency Management.

---

TURKEY POINT NUCLEAR POWER PLANT SITE PLAN

---

**9. Ambulance Services**

Under Miami-Dade County Ordinance 8B-10, all companies licensed by Miami-Dade County to provide non-emergency medical transportation service are required to participate in the evacuation of residential health care facilities and special needs persons that are unable to evacuate themselves.

**10. Miami-Dade County Hospitals**

If required, medical facilities within the 10-mile emergency planning zone will be evacuated to those facilities located outside the 10-mile emergency planning zone. Medical facilities are required to have emergency plans that include evacuation options and agreements with other facilities who host them during evacuations. Baptist South is the only hospital located inside the 10-mile emergency planning zone, and if required, would be evacuated by Baptist Health System. Medical and public health facilities are listed in Chapter 12 of this Annex.

**11. Department of Solid Waste Collection**

The Department is responsible for the collection of solid waste at the shelters (when in use) and the disposal of refuse.

**12. Miami-Dade County School Board**

The Miami-Dade County School Board will provide for the evacuation and safety of school children in the affected areas during school hours. The Board will also provide:

- a. School buses and drivers to evacuate school personnel from the affected area to host facilities as shown in Figure II-17 of this Appendix
- b. Provide a liaison to the Miami-Dade County emergency operations center and coordinate support needs with operations and other agencies
- c. In cases where school is not in session, function as the primary transporter of Special Needs persons out of the 10-mile EPZ.

**13. Miami-Dade County Department of Corrections and Rehabilitation**

The Miami-Dade County Department of Corrections and Rehabilitation will assist with the registration of evacuees who arrive at the Miami-Dade County emergency reception centers (refer to Figure II-9 of this Appendix). The Corrections Department will also:

- a. Function as secondary backup for the provision of transportation to move Special Needs residents out of the 10-mile Emergency Planning zone
- b. Provide crowd control support to MDPD at reception centers

**TURKEY POINT NUCLEAR POWER PLANT SITE PLAN**

---

**14. Other County Agencies**

Other county agencies may be required to provide equipment, personnel and services to support emergency operations.

**15. Other Municipalities**

Other municipalities in Miami-Dade County will provide mutual-aid services as requested.

**B. Monroe County Organizations and Responsibilities**

**1. Mayor, Monroe County Board of County Commissioners**

The Monroe County Emergency Management Department has the responsibility for overall radiological emergency response planning for Monroe County. Time permitting; the decision to implement protective actions will be made jointly at the EOF by the Monroe County IC and Miami-Dade County IC and presented to the Board of County Commissioners, Mayor, or any of their authorized representatives. The Mayor, through the County Administrator and the Director of Emergency Management, shall initiate actions and provide direction and control at the local level, to include consideration of in-place sheltering or evacuation as an option for the protection of the public, and conduct emergency operations to respond to the effects of a radiological emergency.

The Mayor is responsible for assuring continuity of resources to assure 24-hour operations for a protracted period.

Acting upon the recommendation of the Department of Health, the primary responsibility to authorize Monroe County emergency workers to incur exposures in excess of 500 mR rests with the Mayor time permitting, followed by the IC, or authorized designee. In no case will this exceed the dose recommended in protective action guides for emergency workers engaged in lifesaving activities.

**2. Director, Monroe County Emergency Management Department**

The Director of the Monroe County Emergency Management Department is responsible for the coordination, development and maintenance of procedures to implement the Florida Radiological Emergency Management Plan. The Director or designee will be responsible for coordinating emergency operations at the local level and keeping state and local government officials advised on the status of operations. The Director will be at the emergency operations facility and maintain communications with the Division of Emergency Management, the Florida Department of Health, and Miami-Dade Office of Emergency Management. The Director will advise the Monroe County Board of County Commissioners of the situation and of appropriate actions to be taken by the emergency response organizations.

---

**TURKEY POINT NUCLEAR POWER PLANT SITE PLAN**

---

The Director will also maintain coordination with the State Division of Emergency Management, state and federal support agencies, and Florida Power and Light Company on overall emergency operations and support needs.

The Monroe County Emergency Management Department will maintain radio and telephone communications and coordinate with the Miami-Dade County emergency operation center and other emergency response facilities supporting an emergency at the Turkey Point Nuclear Power Plant. The Monroe County Emergency Management Department will notify appropriate local governmental and non-governmental departments and agencies supporting emergency operations to include the designated radiological emergency preparedness emergency operations center located in the Upper Keys that serves as the county's emergency operation center for radiological emergencies at Turkey Point and provides a communications links between the Ocean Reef Department of Public Safety, the emergency response facilities and the Public Safety Offices in Marathon.

**3. Monroe County Sheriff's Department**

The Monroe County Sheriff's Department at the Plantation Key substation is the designated after hours contact for emergency management responsible for notification of the public within the affected area, managing the evacuation response through the use of traffic control measures throughout Monroe County, and verifying that impacted residents have evacuated. The Monroe County Sheriff's Department Public Information Officer will assist in the dissemination of emergency information at both the Radiological Emergency Preparedness emergency operation center and the licensee's emergency news center.

**4. Ocean Reef Department of Public Safety**

The Ocean Reef Department of Public Safety will use route alerting and reverse 911 for notification procedures and evacuation measures in the affected area and provide security in these areas in cooperation with the Monroe County Sheriff's Department.

**5. Monroe County Fire Rescue**

Monroe County Fire Rescue comprising responders from Tavernier and Key Largo Fire Stations will assist the Ocean Reef Department of Public Safety and will be responsible for radiological monitoring and decontamination of evacuees and vehicles if necessary. Monroe County Fire Rescue will provide fire and rescue support, as well as necessary radio communications to assist in warning and notification of the public. They will also maintain radio communications with the Upper Keys radiological emergency preparedness emergency operations center and



---

**TURKEY POINT NUCLEAR POWER PLANT SITE PLAN**

---

the Ocean Reef Department of Public Safety for coordination and support of the tasks assigned to this group.

Monroe County Fire Rescue will also be responsible for emergency medical operations (including screening of evacuees at wash down stations for potentially hazardous health problems), assigning evacuees to appropriate facilities for radiological exposure care, and for coordinating medical services for evacuees in shelters. The Monroe County Fire Rescue will be responsible for radiological monitoring and decontamination of evacuees at the shelter reception center.

Monroe County Fire Rescue will also assist those special medical needs registrants in need of assistance during evacuations by an ambulance and medical crew.

**6. Volunteer Ambulance Corps**

The Key Largo Volunteer Ambulance Corps will be responsible for assisting the Monroe County Emergency Medical Service in radiological monitoring and decontamination of evacuees at the shelter reception center. They will also provide emergency medical transportation to persons in need of such services.

**7. Monroe County Health Department**

The Monroe County Health Department will be responsible for administration of potassium iodide to emergency workers and to members of the general public, and coordinating with Emergency Medical Service medical services as necessary for evacuees once they are located at shelter stations. The Miami-Dade County Health Department will provide support to the Monroe County Health Department during radiological emergencies as required (refer to Chapters 10 and 11 of this Annex).

**8. Monroe County Department of Public Works**

The Monroe County Department of Public Works will provide decontamination assistance to the Fire Department and Ocean Reef Department of Public Safety. The Department of Public Works will provide assistance to the following:

- a. Fire Rescue in assembling and disassembling washdown stations and disposing of waste materials;
- b. American Red Cross (Emergency Support Function 6) by providing garbage pickup and disposal for reception centers;
- c. Sheriff's Department with evacuation operations by providing traffic control equipment and personnel.

**9. Monroe County School Board**

**TURKEY POINT NUCLEAR POWER PLANT SITE PLAN**

---

The Monroe County School Board will supervise temporary shelter operations utilizing school facilities and will provide equipment for the preparation of food for evacuees in cooperation with the American Red Cross. The School Board will also assist in providing buses for evacuees needing transportation.

**10. Lower Keys Medical Center, Fishermen's and Mariners Hospital**

Monroe County hospitals will aid in emergency medical services (refer to Chapter 12 of this Annex).

**11. Other County Agencies**

Other county agencies may be required to provide equipment, personnel and services to support emergency operations.

**C. Collier County Organizations**

The Chairperson, Collier County Board of County Commissioners, will activate the County Emergency Operations Center to assure that appropriate county agencies:

1. Provide county resources and assist State Emergency Support Function 8 in the monitoring and control of potentially contaminated foodstuffs
2. Maintain lists of dairy and other food producers and processors located within the county
3. Coordinate with State Emergency Support Function 8 in the chemical analysis of water obtained from public water supplies.

**D. Broward County Organizations**

The Chairperson, Broward County Board of County Commissioners, will activate the county emergency operations center to assure that appropriate county agencies:

1. Provide county resources and assist State Emergency Support Function 8 in the monitoring and control of potentially contaminated foodstuffs
2. Maintain lists of dairy and other food producers and processors located within the county
3. Coordinate with State Emergency Support Function 8 in the chemical analysis of water obtained from public water supplies

---

**TURKEY POINT NUCLEAR POWER PLANT SITE PLAN**

---

**E. State Emergency Support Function 6 (Mass Care)**

The American Red Cross is the lead agency for Emergency Support Function 6. The American Red Cross and the support agencies will participate in the coordination of 24-hour care and sheltering of evacuees from Miami-Dade and Monroe counties. This service will include the following:

1. Assigning a liaison to each reception center and assist in controlling the flow of evacuees to government-designated evacuation centers.
2. Managing government-designated evacuation centers which include:
  - a. Working with local government in performing evacuation center surveys during pre-planning
  - b. Training of evacuation center workers during pre-planning
  - c. Staffing evacuation center
  - d. Mass feeding
  - e. Providing Disaster Health Services (First Aid)
  - f. Registration of evacuees
3. In the event the relocation period should last longer than anticipated, the American Red Cross will assist with additional mass care services in government-designated evacuation center.

**F. State Division of Emergency Management**

The State Division of Emergency Management will maintain communications with representatives from Florida Power and Light Company and will be responsible for keeping local, State and Federal agencies informed on planning, training, and operational requirements relative to a radiological emergency at the Turkey Point Nuclear Power Plant. Upon receipt of notification that a radiological emergency has occurred at the plant, the State Division of Emergency Management will assist in the notification of the Miami-Dade Department of Emergency Management, Monroe County Emergency Management Department, and appropriate state and federal response agencies (refer to Chapter 5 of this Annex).

The State Division of Emergency Management will also be responsible for coordinating State resources utilized in the emergency response and for coordinating requests for federal assistance.

**G. State Emergency Support Function 8 (Health and Medical)**

The Department of Health is the lead agency for State Emergency Support Function 8. The Department of Health and the support agencies will be responsible for offsite radiological accident assessment and providing technical assistance to the counties by recommending appropriate protective actions. Assessment of the situation by the Department of Health will be based upon input from offsite radiological accident assessment teams and plant officials. The Department of Health will also provide assistance to the county Health Departments regarding emergency medical operations.

**TURKEY POINT NUCLEAR POWER PLANT SITE PLAN**

---

**H. Florida Power and Light Company**

Representatives from Florida Power and Light Company will maintain communications with state, county and Federal agencies. Florida Power and Light Company representatives will be responsible for keeping appropriate officials from these local, state and federal agencies informed of emergency plans. Florida Power and Light will report any emergency situation using the standard emergency classification system outlined in the licensee's emergency plan and in accordance with procedures outlined in Chapter 4 of this Annex.

Until the Department of Health Field Monitoring Teams arrive and are operational at the scene, the licensee will also provide offsite monitoring for, and recommend protective actions to the Risk counties and advise appropriate State Division of Emergency Management and Department of Health personnel of the recommendations.

**III. Direction and Control for Initial Radiological Response**

Miami-Dade and Monroe counties are responsible for initial radiological emergency response operations. The organization of Miami-Dade and Monroe county emergency response agencies is outlined in Figures II-4 and II-6, respectively. Emergency operations will be coordinated through the Miami-Dade Department of Emergency Management and the Monroe County Emergency Management Department, respectively. The primary and secondary functions and responsibilities of Miami-Dade and Monroe county agencies are outlined in Figures II-3 and II-5, respectively.

Should the scope of the emergency exceed the response capability of the risk counties, the State Emergency Operations Center will coordinate with the risk county emergency operations centers to provide state resources necessary to support county response operations.

The Governor may transfer responsibility for overall emergency management to the State by issuing an Executive Order under the provisions of Section 252.36, Florida Statutes. Upon issuance of an Executive Order, the risk counties will continue to coordinate county response operations.

**A. Miami-Dade County**

The County Mayor or his/her designee (the Director, Miami-Dade Department of Emergency Management) will be responsible for the direction and control necessary to initiate actions and conduct emergency operations required to protect the population of Miami-Dade County from an emergency at the Turkey Point Nuclear Power Plant. In his absence, responsibility will be delegated according to county procedures for continuity of county government. The County will coordinate such actions through its Emergency Management Director, or designee and emergency response agencies.

**B. Monroe County**

**TURKEY POINT NUCLEAR POWER PLANT SITE PLAN**

---

Direction and control to initiate action and conduct emergency operations necessary to protect the population of Monroe County from the effects of an offsite radiological emergency occurring at the Turkey Point Nuclear Power Plant will be exercised by the Director of the Monroe County Emergency Management Department or designee. Time permitting; the decisions to implement protective actions will be made jointly at the EOF by the Monroe County IC and Miami-Dade County IC and presented to the Board of County Commissioners, Mayor, or any of their authorized representatives. . The county will coordinate protective actions through the Monroe County Radiological EOC and the Monroe County Emergency Management Director or his/her designee and emergency response agencies.

**IV. Emergency Classification System**

The standard emergency classification scheme to be used by each licensee, county, and the State is outlined in Chapter 4 of this Annex.

**V. Notification and Activation**

Upon declaration of a radiological emergency at the Turkey Point Nuclear Power Plant, the licensee's Emergency Coordinator, or designee, will notify the State Watch Office in Tallahassee and Miami-Dade County, Monroe County, and the Department of Health simultaneously via the Hot Ring Down system within 15 minutes of an emergency declaration. The State Watch Office will ensure that all warning points have picked up on the Hot Ring Down system. The commercial telephone system is the secondary notification system. The EMnet System can also be used as a backup system. The notification message will include details of the emergency and relevant meteorological data as required by the Florida Nuclear Plant Emergency Notification Form. The State Watch Office will verify receipt of the message by Miami-Dade County, Monroe County, and the Bureau of Radiation Control. The State Watch Office will also notify other emergency response organizations in accordance with the procedures outlined in Chapter 5 of this Annex.

The Mayor of the Monroe County Board of County Commissioners and the Mayor of Miami-Dade County will implement their respective county's emergency response plans. Local response organizations will be notified of the emergency in accordance with county standard operating guidelines.

Notification and activation of emergency response personnel will be in accordance with established implementing plans and procedures of the Miami-Dade County Department of Emergency Management and the Monroe County Emergency Management Department. Procedures for notification and activation of county emergency response organizations at each emergency class are outlined below.

**A. Notification of Unusual Event**

At this emergency class, the Miami-Dade Fire Department will provide fire fighting assistance at the Turkey Point Nuclear Power Plant if requested. Primary response organizations may be notified by the county warning points or instructed to stand by until verbal closeout or escalation to a more severe class.

**TURKEY POINT NUCLEAR POWER PLANT SITE PLAN**

---

**B. Alert**

At this emergency class, the Miami-Dade Department of Emergency Management Director and the Monroe County Emergency Management Department Director may augment their resources by activating the emergency operations centers for their respective counties and other primary response centers. The directors may alert to standby status key local emergency response personnel, including radiological monitoring teams and communicators, who may report to the emergency operations centers. The Director of Emergency Management or his/her designee may be dispatched to the licensee's emergency operations facility as appropriate. Emergency Alert System stations may be notified and alerted to stand-by status for possible activation.

State Emergency Support Function 8 monitoring teams will be activated to provide confirmatory offsite radiological monitoring in conjunction with the licensee's radiological monitoring teams. All other response actions will be the same as a Notification of Unusual Event.

**C. Site Area Emergency**

The Emergency Management Directors for Miami-Dade County and Monroe County will activate the county emergency operations centers and other emergency response centers as appropriate. All local emergency response organizations will be activated and will report to their duty stations, in accordance with established county procedures.

Miami-Dade County officials will provide the public with periodic updates on the status of the emergency. Monroe County officials will provide the public within Monroe County, out to a radius of approximately 10 miles from Turkey Point, with periodic updates on the status of the emergency. Upon activation of the emergency news center, all public information will be coordinated through this facility.

If in-place sheltering or evacuation of areas near the site is appropriate, Miami-Dade County will activate the public notification system. The Ocean Reef Department of Public Safety will use the Route Alert System for the notification of Ocean Reef residents and guests with the assistance of Monroe County Sheriff's Office as required.

State Emergency Support Function 8 will provide, in conjunction with the licensee, offsite radiological monitoring and protective action recommendations upon arrival at the emergency operations facility. Prior to the deployment of State field monitoring personnel, the licensee's offsite radiological monitoring teams will provide dose assessments and protective action recommendations directly to the risk counties and will advise the Division of Emergency Management of its recommendations.

---

**TURKEY POINT NUCLEAR POWER PLANT SITE PLAN**


---

The Division of Emergency Management will activate the State Emergency Operations Center. All other response actions will be the same as the previous emergency class.

**D. General Emergency**

Emergency Management Directors for Miami-Dade and Monroe counties will notify all local emergency response organizations and activate all emergency response centers. The public notification systems will be activated in Miami-Dade County, and will provide periodic updates of emergency status and applicable protective measures. All other response actions will be the same as the Site Area Emergency class.

**VI. Notification of the Public**

- A. Florida Power and Light has installed sirens for notification of the public within the 10-mile Emergency Planning Zone. This notification siren system is controlled from the Miami-Dade County emergency operations center and will be activated as necessary. Residents and transients within the 10-mile emergency planning zone will be advised to tune to the following radio and television stations for detailed information and instructions:

<b>MAIMI-DADE COUNTY</b>				
<i><b>ENGLISH</b></i>				
<b>AM Radio</b>	<b>Frequency</b>	<b>FM Radio</b>	<b>Frequency</b>	<b>Television</b>
WIOD	610	WZTA	94.9	WFOR-CH 4
WINZ	940	WRTO	98.3	WTVJ-Ch 6
WAXY	790			WSVN-CH 7
				WPLG-CH10
<i><b>SPANISH</b></i>				
<b>AM Radio</b>	<b>Frequency</b>	<b>FM Radio</b>	<b>Frequency</b>	<b>Television</b>
WQBA	1140	WAMR	107.5	WLTU-CH 23
WAQI	710			WSCV-CH 51
<i><b>CREOLE</b></i>				
<b>AM Radio</b>	<b>Frequency</b>	<b>FM Radio</b>	<b>Frequency</b>	<b>Television</b>
		WDNA	88.9	

<b>MONROE COUNTY</b>				
<i><b>ENGLISH</b></i>				
<b>AM Radio</b>	<b>Frequency</b>	<b>FM Radio</b>	<b>Frequency</b>	<b>Television</b>
WFFG	1300	WEOW	92.5	Ch 5
WAWF	1500	WPIK	102.5	Ch 16
		WKRY	93.5	
		WFKZ	103.1	
		WGMZ	94.3	
		WWUS	104.1	
		WKEZ	96.9	
		WAVK	105.5	
		WCTH	100.3	



---

**TURKEY POINT NUCLEAR POWER PLANT SITE PLAN**


---

		WIS	107.1	
		WKLG	102.1	
<b>SPANISH</b>				
<b>AM Radio</b>	<b>Frequency</b>	<b>FM Radio</b>	<b>Frequency</b>	<b>Television</b>
		WRAU	106.3	

- B. As a backup, police and fire rescue vehicles equipped with public address systems and loudspeakers, and aircraft equipped with public address systems, may move throughout the area advising residents of the protective actions they should take based on the severity of the emergency in accordance with established county procedures.
- C. Boaters in the waters within the 10-mile emergency planning zone will be notified of the emergency by VHF Radio and loudspeakers from boats and aircraft operated by:
1. Biscayne National Park Service
  2. State Emergency Support Function 16 (Law Enforcement, Florida Fish and Wildlife Conservation Commission)
  3. Miami-Dade Police Marine Patrol
  4. United States Coast Guard
- D. The public notification system may be activated for an Alert, and will be activated for a Site Area Emergency or a General Emergency in a timely manner upon direction of the Miami-Dade Mayor and Monroe County Boards of County Commissioners or their designees. The population within the 10-mile emergency planning zone should receive primary notification and instructions via all primary notification systems for the general population, including the Emergency Alert System. Backup route alerting and notification, if necessary, shall be completed within 45 minutes. Pre-scripted messages for notifying the public for both Miami-Dade and Monroe counties are maintained in each county's respective standard operating procedures.

## **VII. Emergency Communications**

### **A. Miami-Dade County**

Miami-Dade County maintains 24-hour daily communications through the county's communications center on the Hot Ring Down system, commercial telephone, Emergency Satellite Communications System, and Local Government Radio System.

Upon activation of the Miami-Dade county emergency operations center, all emergency communications systems will be placed in service and tested.

The emergency operations center will provide a focus of all communications for emergency operations. Direction and control of county communications facilities



### TURKEY POINT NUCLEAR POWER PLANT SITE PLAN

---

and personnel will emanate from the emergency operations center. Data and feedback relevant to the administration of emergency operations will be directed to the emergency operations center.

The initial notification of response organizations shall occur via telephone or alternate communication link. These organizations include:

1. Fire Department
2. Police Department
3. Corrections Department
4. County Health Department
5. Parks and Recreation
6. Transportation Department
7. Public Works Department
8. Solid Waste Collection
9. Water and Sewer Department
10. Environmental Resource Management
11. State Emergency Support Function 6 - Mass Care
12. State Emergency Support Function 16 - Law Enforcement
13. School Board
14. Miami, City of
15. Miami Beach, City of
16. Hialeah, City of
17. Coral Gables, City of
18. Homestead, City of
19. Florida City, City of
20. Homestead Air Reserve Base
21. Agricultural Extension
22. South Florida Water Management District
23. Other response agencies as necessary

In addition, direct communications between the Miami-Dade county emergency operations center and the following organizations will be maintained:

1. The State Division of Emergency Management regarding the local situation and requests for state and federal support resources.
2. State Emergency Support Function 8 (including the Mobile Emergency Radiological Laboratory), regarding accident assessment and protective response.
3. The nuclear power plant via the Hot Ring Down system, commercial telephone, and/or the Emergency Satellite Communications System.
4. Monroe County by Hot Ring Down system, commercial telephone and/or the Emergency Satellite Communications System.
5. Medical facilities and ambulance services through the emergency medical radio network.

**TURKEY POINT NUCLEAR POWER PLANT SITE PLAN**

---

6. Federal emergency response agencies, coordinated by the Division of Emergency Management.

**B. Monroe County**

Twenty-four hour communications in Monroe County is provided through the Sheriff's Office dispatcher via the Hot Ring Down system, commercial telephone, and local government radio. Direction, coordination and control of communications for the county rests with the Director of the Emergency Management Department. The Public Information Officer or designee is the communications officer. In the event of a radiological emergency, the communications officer or designee will maintain routine operations.

The Public Information Officer will organize all communications within the county for emergency use, and will act as liaison for all resource groups and agencies (local, state and federal) within the county and maintain a log of incoming and outgoing messages. Direct communications between the Monroe County emergency operations center and the following organizations will be maintained:

1. The State Division of Emergency Management regarding the local situation and request for state resources.
2. State Emergency Support Function 8 (including the Mobile Emergency Radiological Laboratory) regarding accident assessment and protective response.
3. The nuclear power plant via the Hot Ring Down system, commercial telephone, and/or the Emergency Satellite Communications System.
4. Miami-Dade County via the Hot Ring Down system, commercial telephone, and/or the Emergency Satellite Communications System.
5. The Emergency News Center via commercial telephone.
6. Public Safety Office located in Marathon via the commercial telephone, or Hot Ring Down System.
7. Local emergency response agencies by agency radio systems and commercial telephone.
8. Medical facilities and ambulance services through the County's Upper Keys Radiological Emergency Preparedness emergency operations center at Tavernier Fire Rescue Station #22.
9. Federal agencies, coordinated by the Division of Emergency Management.

Hard copy communications will be provided by facsimile systems among the State Division of Emergency Management, the utility and the Miami-Dade County Department of Emergency Management.

**TURKEY POINT NUCLEAR POWER PLANT SITE PLAN**

---

**C. Test Schedule for Communications Equipment**

Miami-Dade and Monroe counties' testing of communications systems will be in accordance with Chapter 6 this Annex.

**VIII. Public Information**

**A. Public Education**

A coordinated dissemination of information will be conducted annually in the area surrounding the Turkey Point Nuclear Power Plant to keep the residents and the media informed of the consequences surrounding a nuclear power plant emergency and of the response plans for management of the emergency.

Florida Power & Light, Miami-Dade County and Monroe County will jointly develop and maintain a public information document containing appropriate educational material. This publication will include but not be limited to the following information:

1. Information about radiation
2. The office and telephone number to contact for further information
3. Information on protective measures, including evacuation routes, reception centers, sheltering, and the identification of radio stations that will be used to broadcast emergency information
4. Specific information for the disabled

Information booklets are distributed annually by Florida Power and Light to all residents, businesses and lodging facilities within the 10-mile emergency planning zone.

Appropriate public notices will be posted in parks, beaches, and other outdoor recreational facilities within the 10-mile emergency planning zone that are under the control of State and local government. These will inform the transient population of appropriate actions to take when they hear an alert signal (refer to Chapter 7 of this Annex).

**B. Media Education**

The Division of Emergency Management, Florida Power and Light, Miami-Dade County and Monroe County will conduct coordinated programs to acquaint the news media with the radiological emergency plans and procedures for the Turkey Point Nuclear Power Plant. Information on radiation and the points of release of public information during an emergency is discussed.

**C. Emergency News Releases**

**TURKEY POINT NUCLEAR POWER PLANT SITE PLAN**

---

Dissemination of information to the public and the news media will be coordinated by the Public Information Officers from the licensee, Division of Emergency Management and Miami-Dade and Monroe counties. These officials will obtain information about their respective emergency response activities and disseminate it to the media. A common center for news releases in the Turkey Point Nuclear Power Plant area is the emergency news center, located adjacent to the Florida Power and Light emergency operations facility in Miami (refer to Chapter 7 of this Annex).

**D. Rumor Control**

The Miami-Dade County Answer Center will be in the county emergency operations center with 24-hour coverage during an emergency. The telephone number is listed in the public information booklets distributed within the 10-mile emergency planning zone and media releases during an emergency.

Monroe County's Emergency Information Hotline will be in the Radiological Emergency Preparedness emergency operation center with 24-hour coverage during an emergency. The telephone number is listed in media releases during the emergency.

Upon activation of the county rumor control centers and the Florida Emergency Information Line, a schedule will be established for the exchange and coordination of information in accordance with procedures.

**IX. Emergency Facilities and Equipment**

**A. Miami-Dade County Emergency Operations Center**

The Miami-Dade County emergency operations center is located at 9300 NW 41 Street as shown in Figure II-7. The emergency operation center will be staffed in accordance with established county implementing procedures.

The Miami-Dade County emergency operations center may be activated by the Director, or upon the direction of the County Manager. Activation of the emergency operations center will involve immediate staffing of designated personnel and notification of appropriate emergency response personnel. Emergency personnel will either be placed on standby or active status, depending upon the severity of the emergency. Notification will be in accordance with established county procedures.

**B. Monroe County Emergency Operations Center**

Currently, Monroe County has two locations identified as the radiological emergency preparedness emergency operations centers. The primary radiological emergency preparedness emergency operations center is located at the Tavernier Fire Rescue Station in Tavernier, with the Key Largo Fire Rescue Station in Key Largo as a back-up facility. The location of these facilities is shown in Figure II-8.

**TURKEY POINT NUCLEAR POWER PLANT SITE PLAN**

---

The Monroe County emergency operations center may be activated by the Director of Emergency Management, or designee, upon receipt of notification of an Alert emergency class, or upon the direction of the Mayor of the Monroe County Board of County Commissioners. Activation of the emergency operations center will involve immediate staffing of designated personnel and notification of all emergency response personnel. Emergency personnel will either be placed on standby or active status, depending upon the severity of the emergency. Notification will be in accordance with established county procedures.

**C. Licensee Emergency Operations Facility**

Florida Power & Light Company's emergency operations facility is located at its corporate headquarters at 9250 W. Flagler Street, Miami. The location of the emergency operations facility is shown in Figure II-7. Representatives from the Miami-Dade County Department of Emergency Management and the Monroe County Emergency Management Department will report to the Licensee's emergency operations facility upon activation.

**D. Emergency News Center**

An Emergency News Center with accommodations for up to 50 media representatives is located at the licensee's emergency operations facility. Public Information Officers from the State, Miami-Dade County and Monroe County will report to the emergency news center when the facility is activated. The location of the emergency operations facility is shown in Figure II-7.

**E. Evacuation Centers**

**1. Miami-Dade County**

Locations of facilities that may be utilized to provide temporary shelter for evacuees from portions of Miami-Dade County within the 10-mile emergency planning zone are shown in Figure II-9. Centers are selected at the time of the incident based on availability and other operational factors.

**2. Monroe County**

Locations of facilities that may be used to provide temporary shelter for evacuees from portions of Monroe County within the 10-mile emergency planning zone are shown in Figure II-11.

**F. Radiological Facilities**

**1. Miami-Dade County**

Miami-Dade County uses CD V-777-1 kits (or equivalent) for radiological monitoring. These kits are located at the Miami-Dade emergency operations center. Emergency responders are trained in the proper use of this equipment. Those receiving training are assigned to emergency

---

**TURKEY POINT NUCLEAR POWER PLANT SITE PLAN**

---

response positions. A list of available kits is provided in Figure II-12. This number changes depending on calibration and repairs.

Miami-Dade County will inventory and inspect communications equipment and radiological monitoring equipment after each exercise and as required.

Defective radiological monitoring instruments will be exchanged by the State Department of Health Radiological Instruments Maintenance and Calibration Facility in Orlando. Calibration of the instruments will be in accordance with intervals recommended by the suppliers.

Should assistance be requested under the provisions of the Interagency Radiological Monitoring and Assistance Plan, the Division of Emergency Management will coordinate the required assistance.

**2. Monroe County**

Monroe County uses CD V-777-1 (or equivalent) radiological emergency response kits. These are located at the Ocean Reef Department of Public Safety, Tavernier Fire Rescue, and Monroe County Sheriff's Office substation in Plantation Key (see Figure II-8). A list of available kits is provided in Figure II-12. Emergency responders are trained in the proper use of this equipment. Those receiving training are assigned to emergency response positions.

Monroe County will inventory and inspect communications equipment and radiological monitoring equipment after each exercise and as required.

Defective radiological monitoring instruments will be exchanged by the Bureau of Radiation Control's Radiological Instrument Maintenance and Calibration Facility. Calibration of the instruments will be in accordance with intervals recommended by the supplier.

Should assistance be requested under the provision of the Interagency Radiological Monitoring and Assistance Plan, the State Division of Emergency Management will coordinate the required assistance.

**G. Local Resources to Support the Federal Emergency Response**

Federal emergency response agencies dispatched to the Turkey Point Nuclear Power Plant emergency area will locate in close proximity. The federal government public information officers will be located with the utility, state and local Public Information Officers at the emergency news center. State and local emergency personnel will assist federal personnel in establishing operations.

**X. Accident Assessment**

- A. The State Department of Health will be responsible for offsite radiological accident assessment (see Chapter 9 of this Annex).

**TURKEY POINT NUCLEAR POWER PLANT SITE PLAN**

---

- B. The Turkey Point Nuclear Power Plant will provide offsite monitoring and initial accident assessment until State Emergency Response Team personnel deploy to its assigned duty station to assume this responsibility.
- C. The Department of Health has established a field team composed of health physicists located in Miami. This team will be dispatched to the Turkey Point site to provide early offsite monitoring. The team will coordinate monitoring activities with the licensee's field teams, and send a liaison to the Miami-Dade and Monroe county emergency operations centers and to the State Emergency Operations Center.
- D. Should it become necessary to dispatch Bureau of Radiation Control survey teams to the Turkey Point site area, the Mobile Emergency Radiological Laboratory will be dispatched to its berthing site in accordance with Department of Health procedures and Chapter 9 of this Annex.
- E. When the Department of Health field monitoring teams are deployed and the Mobile Emergency Radiological Laboratory is in its assigned location, it will be the sole point for analysis and receipt of all off-site field monitoring data and sample media for accident assessment. Accident assessment will be based on field monitoring results, the current meteorological conditions, plant conditions, plant prognosis, and any licensee release information as it becomes available. Protective action recommendations will be relayed to Miami-Dade County, Monroe County and state representatives at the emergency operations facility. Protective action decisions will be forwarded to the respective emergency operations centers by their representative to ensure there are no impediments to implementing protective action decisions.
- F. Monitoring of the affected area(s) and recommended protective actions will continue until no longer necessary.

**XI. Radiological Exposure Control**

- A. Emergency workers will be issued direct-reading and dosimeter badges prior to entering any area suspected of radioactive contamination in accordance with procedures outlined in Chapter 10 of this Annex. Personnel performing emergency service functions inside the radiation hazard area will read direct-reading dosimeters at 30-minute intervals and report accumulated exposure to their supervisor at least every six hours and when their exposure reaches or exceeds 100 mR and 500 mR. The supervisor will be responsible for maintaining dose records which will be reported to the appropriate county emergency operations center at least once every six hours.
- B. The Bureau of Radiation Control exposure limit is 500 mR per day and 5000 mR for the duration of the emergency. Any person whose exposure has reached 500 mR or more will be directed to leave the area and report to a personnel monitoring station for appropriate action. The supervisor will report the exposure to the County Radiation Officer, who will report to the Radiological Safety Officer.



**TURKEY POINT NUCLEAR POWER PLANT SITE PLAN**

---

- C. When manpower allows, rotation of personnel out of the affected area will begin when exposure has reached 500 mR. Personnel will be directed to report to a monitoring station for appropriate action. Should it become necessary to expose emergency workers to radiation doses in excess of 500 mR, the Mayor of the Monroe Board of County Commissioners (or designee), or the Miami-Dade County Mayor (or designee) will make the decision after consultation with the Bureau of Radiation Control Operations Officer. Total dose limits for emergency workers will not exceed 25 rem, except for voluntary lifesaving activities.
- D. The use of potassium iodide has been pre-approved by the State Health Officer for state and county radiation workers. Based on actual releases of radioactive iodine, the Department of Health Operations Officer will direct potassium iodide be taken by state radiation workers and will notify the counties of the decision. The decision to administer potassium iodide to county emergency workers will then be made by the Mayor of the Monroe Board of County Commissioners (or designee), or the Miami-Dade County Mayor (or designee) in accordance with established county procedures. During a rapidly escalating incident, where releases of radioactive iodine are imminent or have occurred, the county health officers may recommend county emergency workers take potassium iodide before consultation with the Department of Health Operations Officer. The County Health Officer will be available for consultation. Potassium iodide for thyroid blocking is considered to be the proper response for emergency workers when they are involved in a nuclear emergency where the projected radiation dose to the thyroid from radioactive iodine is greater than 5 Rem. The County Health Officer is responsible for proper storage, periodic inspection and distribution of potassium iodide in accordance with established county procedures and the Bureau of Radiation Control's Standard Operating Procedure 7.
- E. Personnel who are injured in the area of a radiological emergency will be treated as possible contaminated victims until positive determination can be made. Emergency medical personnel will follow established county procedures to prevent the spread of contamination on an injured person, to medical support personnel, and to medical equipment until the injured person can be transported to Baptist Hospital or Mercy Hospital for treatment of the contaminated injury. Possible or actual radiological contamination should not delay treatment of severely injured victims.
- F. Radiation exposure records will be prepared for each emergency worker who worked inside the radiation hazard area in accordance with procedures outlined in Chapter 10 of this Annex. These records will be forwarded through the county to the Bureau of Radiation Control who will prepare a permanent record and return one copy to the county director. The permanent record dosimeter badges will be collected and returned to the Bureau of Radiation Control for reading by the contractor. A printout of dosimeters readings will be provided to the emergency worker and the Division of Emergency Management, via the County Radiation Officer.
- G. Procedures have been established for routine exchange and servicing of the dosimeter badges by the Bureau of Radiation Control during non-emergency



**TURKEY POINT NUCLEAR POWER PLANT SITE PLAN**

---

periods. Dosimeter badges will be stored at the county emergency operations centers:

Miami-Dade Department of Emergency Management  
9300 NW 41 Street  
Miami, Florida 33178

Ocean Reef Public Safety Department  
100 Anchor Drive  
Key Largo, Florida

Tavernier Fire Rescue Station  
151 Marine Avenue  
Tavernier, Florida

**XII. Protective Response**

Protective actions which may be initiated to provide for the safety of the public may include any or all of the following: Notification of affected residents and transients to seek immediate in-place shelter, evacuation of transients and residents within designated zones exposed to a plume of radioactive gases to shelter areas outside the 10-mile emergency planning zone, control of entrance into affected areas, implementation of procedures to prevent the consumption and distribution of contaminated food and water supplies and implementation of procedures to decontaminate persons exposed to radiation.

**A. Protective Action Guides**

The Department of Health State Emergency Response Team personnel will use the U.S. Environmental Protection Agency's Protective Action Guide Manual 400-R-92-001 as a guide for recommending protective actions. The Department of Health Operations Officer will provide these recommendations to Risk counties and to the State Coordinating Officer. If time does not permit State involvement in initial decision making, the decision to take protective actions may be made by the Miami-Dade County Mayor and the Mayor of the Monroe County Board of County Commissioners, or their designated alternates. Protective actions will be implemented by the Director of the Miami-Dade Department of Emergency Management and the Monroe County Director of Emergency Management.

Predetermined protective actions will be taken when the projected dose rate at any place and time appear to be at or above those recommended in the protective action guides identified in Chapter 11 of this Annex .

**B. Potassium Iodide**

1. Potassium iodide can be given to emergency workers to saturate their thyroid gland with stable iodide and thus prevent the uptake of inhaled or ingested radioactive iodide. Potassium iodide does not protect other parts of the body to radiation exposure and does not protect the thyroid from external radiation. The greatest percentage of thyroid protection occurs when potassium iodide is administered at or about the time of

**TURKEY POINT NUCLEAR POWER PLANT SITE PLAN**

---

exposure. Potassium iodide will be furnished for emergency workers and difficult to move people in accordance with established county procedures and policies and with the Bureau of Radiation Control's standard operating procedure number 7 and Chapters 10 and 11 of this Annex .

2. Potassium iodide will be issued to members of the general public in accordance with established county procedures and policies and with the Bureau of Radiation Control's standard operating procedure number 20 and Chapters 10 and Chapter 11 of this Annex. To provide for issuance of potassium iodide to members of the public, stockpiles of potassium iodide are strategically located near nuclear power plant sites. During an emergency, if stocks at one or more locations run low, additional stocks from other sites will be brought in. The issuance of potassium iodide will be authorized by the Bureau of Radiation Control Operations Officer or designee.

**C. Control of Access into Affected Areas**

No reentry will be authorized without concurrence of the State Coordinating Officer, the Miami-Dade and Monroe County Mayors, or their designees. This decision will be based upon the advice of the Bureau of Health and the County Health Department. Cleared areas will be opened only when clearly definable boundaries are available. Law enforcement personnel will provide support to control entrance into the affected area.

**D. Sheltering (In-Place)**

The decision to implement taking shelter indoors instead of evacuation will be made by the Miami-Dade and Monroe County Mayors through the county directors, or designees. This decision will be made based upon current weather conditions, traffic impediments, and the advice of the Bureau of Radiation Control and/or the county health department. The notification to take shelter indoors will be issued by radio, television broadcast, police, fire, and emergency personnel using loudspeakers and National Oceanic and Atmospheric Administration weather alert radios, in accordance with the criteria specified in Chapter 11 of this Annex. Protective actions for special needs facilities will be given separate consideration.

**E. Evacuation**

Evacuation of any impacted area within the 10-mile emergency planning zone will be directed by the Miami-Dade and Monroe county Mayors or their designees. If a disaster is declared under the provisions of Chapter 252, Florida Statutes, the Governor or the State Coordinating Officer, in consultation with the Bureau of Radiation Control and Miami-Dade and Monroe county Mayors or designees, may order an evacuation if necessary, and jointly direct the evacuation operation with the Miami-Dade and Monroe county Mayors.

If the order to evacuate is given, evacuation will be by area utilizing geographic boundaries. Citizens residing in an area which is ordered to evacuate will be

**TURKEY POINT NUCLEAR POWER PLANT SITE PLAN**

---

instructed to proceed according to the evacuation plan for that area. The population distribution by sector within the 10-mile emergency planning zone is shown in Figure II-14. Evacuation routes for residents within the 10-mile emergency planning zone are identified in Figure II-15.

Traffic control points along evacuation routes will be established to expedite the flow of traffic during the evacuation process. Miami-Dade County will utilize police officers from the Miami-Dade Police Department and will be assisted by members of the Homestead and Florida City Police Departments and the Florida Highway Patrol as necessary. Monroe County will utilize deputies from the Monroe County Sheriff's Department and will be assisted by emergency support function 16 as necessary. Barricades will be utilized at those points not manned by law enforcement personnel.

**1. Evacuation Areas**

The following describes evacuation areas in Miami-Dade and Monroe counties, by zones (refer to Figure II-16):

**Zone 1**

The Turkey Point Nuclear Power Plant and surrounding owner controlled areas.

**Zone 2 (0-2 Miles)**

Out 360 degrees to two (2) miles, including Biscayne National Park and Homestead Bayfront Park.

**Zone 3 (2-5 Miles for Sectors N, M, L, K, J)**

North of: Dade/Monroe County Line.  
 South of: SW 344 Street (Palm Drive).  
 West of: SW 137 Avenue (Tallahassee Road).  
 East of: Biscayne Bay and the Atlantic Ocean.

**Zone 4 (2-5 Miles for Sectors R, Q, P including Homestead Air Reserve Base)**

North of: SW 344 Street (Palm Drive).  
 South of: SW 280 Street (Waldin Drive) and Moody Drive.  
 West of: 137 Avenue (Tallahassee Road).  
 East of: Biscayne Bay and the Atlantic Ocean.

**Zone 5 (5-10 Miles for Sector A)**

North of: Black Creek from the Florida Turnpike Extension (SR 821) to Biscayne Bay.  
 South of: SW 184 Street (Eureka Drive) from Biscayne Bay to U.S. 1.

## Appendix II

### TURKEY POINT NUCLEAR POWER PLANT SITE PLAN

---

West of: U.S. 1 from 184 Street (Eureka Drive).  
The Florida Turnpike Extension (SR 821) from 200  
Street (Quail Roost Drive) to Black Creek.  
East of: Biscayne Bay and the Atlantic Ocean.

#### **Zone 6 (5-10 Miles for Sectors Q, R)**

North of: Moody Drive and SW 280 Street (Walden Drive).  
South of: SW 200 Street (Quail Roost Drive), SW 204 Street  
and SW 216 Street (Hailin Mill Drive).  
West of: 137 Avenue (Tallahassee Road).  
East of: Biscayne Bay Shoreline from SW 280 Street  
(Waldin Drive) north to Black Creek.  
Black Creek from Black Point to the Florida  
Turnpike Extension (SR 821).  
The Florida Turnpike.

#### **Zone 7 (5-10 Miles for Sectors Q, P)**

North of: SW 288 Street (Biscayne Drive).  
South of: SW 216 Street (Hailin Mill Road), SW 232 Street  
(Silver Palm Drive), SW 248 (Coconut Palm Drive)  
and SW 272 Street (Epmore Drive).  
West of: 147 Avenue (Naranja Road), SW 157 Avenue  
(Newton Road), SW 167 Avenue (Tennessee  
Road) and SW 177 Avenue (Krome Avenue).  
East of: 137 Avenue (Tallahassee Road).

#### **Zone 8 (5-10 Miles for Sector N, P)**

North of: SW 392 Street.  
South of: SW 288 Street (Biscayne Drive).  
West of: SW 187 Avenue (Redland Road).  
East of: SW 137 Avenue (Tallahassee Road)

#### **Zone 9 (5-10 Miles for Sectors N, M, L)**

North of: Miami-Dade County Work Camp Road, Florida  
Rock and Sand and the Intersection of Card Sound  
Road and 137 Avenue (Tallahassee Road).  
South of: SW 392 Street.  
West of: SW 182 Avenue (Redland Road).  
East of: 137 Avenue (Tallahassee Road).

#### **Zone 10 (5-10 Miles for Sectors H, J, K)**

North of: Key Largo, Ocean Reef, Angelfish Key and Palo  
Alto Key.  
South of: Dade/Monroe County Line.  
West of: Card Sound Road and State Road 905.

---

TURKEY POINT NUCLEAR POWER PLANT SITE PLAN

---

East of: The Atlantic Ocean.

**2. Evacuation for Special Needs**

Residents with disabilities who require special assistance will be pre-registered. If evacuation is necessary, vehicles will be dispatched to provide transportation to the reception center.

**a. Schools**

There are approximately 35 public schools and 23 private schools within the 10-mile emergency planning zone (see Figure II-17). The estimated time to dispatch buses to these schools is 30 minutes after drivers are recalled. When notice to evacuate affected schools is given, the school system will make arrangements to pick up students from the schools and transport them to host schools. Families will be advised via the media not to pick up children from their school, but to reunite at host schools.

Approximately 22 private schools are located within the 10-mile emergency planning zone. Students at these schools are transported to and from school by their parents and a limited number are transported on a scheduled basis by a single van shared by one or more schools. These schools have independent disaster plans or follow the protective action recommendations of Miami-Dade Emergency Management. Protective actions are in the form of "shelter in place" or "early dismissal" recommendations. Such actions may begin as early as the Alert declaration in accordance with individual facility plans. Parents may be notified to pick up children at the schools. Should there be children that have not been picked up by parents at the General Emergency declaration, public transportation buses may be provided to evacuate these schools, as appropriate.

**b. Medical Facilities (Hospitals, Retirement Homes and Villages, Group Homes, and Congregate Care Living Facilities)**

Medical facilities (see Figures II-13 & II-19) are required to have relocation agreements with a similar facility in case they are required to evacuate. In case of an emergency at Turkey Point, medical facilities within the 10-mile emergency planning zone would be notified by telephone. Whenever possible, medical facilities will be allowed to practice in-place sheltering to prevent unnecessary trauma to patients. In cases where the incident is severe or will be extended over a long period of time, medical facilities may be required to evacuate.

Most of the retirement homes or villages and group homes (see Figure II-13) within the Turkey Point 10-mile emergency planning zone have transportation available or have residents who own

---

TURKEY POINT NUCLEAR POWER PLANT SITE PLAN

---

private automobiles that all the residents could be evacuated by car-pooling. However, Miami-Dade County Transit buses as well as ambulances or fire rescue vehicles may be provided to complete evacuation of these facilities, if necessary.

c. **Incarceration Facilities**

The Homestead/Florida City jail and the Miami-Dade Police Department holding cell (Cutler Ridge) are within the Turkey Point evacuation area (see Figure II-19). Both are temporary detention facilities where arrestees are held for up to four hours and three hours, respectively, prior to being transported to the appropriate Miami-Dade County Detention Center. At full capacity, they represent approximately 45 prisoners. In the event an evacuation is ordered, sufficient police vehicles would be available to remove the prisoners from the 10-mile Emergency Planning Zone.

d. **Homestead Air Reserve Base**

Homestead Air Reserve Base will be notified of an offsite release from the Turkey Point Nuclear Power Plant via the Miami-Dade Department of Emergency Management. The Miami-Dade Department of Emergency Management will notify Homestead Air Reserve Base of an evacuation order for the public. Homestead Air Reserve Base will release civilian and military personnel Homestead Air Reserve Base's mission requirements and pre-established emergency plans.

e. **Homestead Miami Speedway**

The Homestead Miami Speedway is located just outside the five (5) mile radius of the Turkey Point Nuclear Power Plant as shown in Figure II-19. It has a capacity of approximately 75,000 and is estimated to hold at least 5 sanctioned events annually.

The Homestead Police Department has jurisdiction over the Speedway, and is tasked with carrying out the evacuation. Part of the Homestead Police Department's Standard Operating Procedure for a large race event is to establish a mobile command post at the Speedway to coordinate traffic control functions. Other law enforcement agencies will also have representation at the Homestead Mobile Command Post during race events.

At the declaration of an Alert (and continuously throughout the duration of the event) at Turkey Point, communications will be established with the Homestead Mobile Command Post. If an evacuation of the Homestead Miami Speedway becomes necessary, the Miami-Dade County emergency operations center will notify the Homestead Police Mobile Command Post to activate the Speedway evacuation plan. In order to mitigate the impact of

**TURKEY POINT NUCLEAR POWER PLANT SITE PLAN**

---

evacuating the Speedway on the evacuation of the emergency planning zone's general population, the Speedway may be evacuated at the declaration of the Site-area Emergency declaration.

**f. Offshore Areas**

The Biscayne National Park Service and the State Emergency Support Function 16 will secure the evacuation zone(s) and direct boats in the area to the appropriate sites for possible monitoring and decontamination. Warnings to marine traffic will be broadcast by the United States Coast Guard over marine radio.

Evacuees from offshore areas in waters off Miami-Dade County will be directed to Matheson Hammock Park Marina for monitoring and decontamination as necessary. Transportation to shelter locations will be provided as necessary by Miami-Dade County.

**F. Monitoring and Decontamination**

Reception centers will provide monitoring and decontamination (if required) for evacuees. The monitoring and decontamination of vehicles and the handling of personal belongings will be in accordance with county procedures. Vehicles of contaminated individuals may be impounded and handled as time and resources permit (in accordance with county procedures)

In order to allow contaminated emergency vehicles and emergency workers to return to operation, monitoring and washdown sites will be set up. All monitoring and decontamination will be in accordance with local procedures.

**G. Reception and Care**

**1. Registration**

Following screening, an initial or preliminary registration to obtain the name, address and telephone number of the evacuee will be accomplished by the Miami-Dade Department of Corrections and Rehabilitation representatives. Evacuees will then be directed to proceed to designated shelters or other pre-arranged destinations.

A second and more detailed registration of evacuees will be accomplished upon arrival at the shelters. Personal data on evacuees will be collected by American Red Cross representatives in accordance with their standard operating procedures.

In Monroe County, the American Red Cross will be responsible for the registration of evacuees at the Shelter Reception Center in accordance with their standard operating procedures.

---

**TURKEY POINT NUCLEAR POWER PLANT SITE PLAN**

---

Registration data will be tabulated and submitted to the county emergency operations centers. Registration forms will be in accordance with the agency's standard operating procedures.

**2. Reception/Shelter Centers**

Reception centers in risk counties will be established for the purpose of screening evacuees for contamination, decontaminating evacuees (if required), and providing food service and health and medical care to evacuees (see Figures II-9 and II-11).

After a temporary Reception Center stay, evacuees will be moved to shelters or to temporary housing provided by Emergency Support Function 6 and support agencies under the direction of Emergency Support Function 6.

Evacuees will only be allowed to reenter the affected area in accordance with conditions described in Chapter 13 of this Annex.

**H. Shelter Facilities****1. Miami-Dade County**

Shelters are identified by location and capacity. Capacities are based on 20 square feet per person and reflect space available that would allow the facility used to operate as a shelter and continue its primary function.

**2. Monroe County**

The Key Largo School will be utilized as the primary decontamination, reception, and shelter facility at Key Largo School and four (4) additional facilities which could be used as shelter/care centers. A listing of these facilities and map locations are shown in Figure II-11. Capacities are based on 20 square feet per person and reflect the maximum capability of the facility to shelter evacuees with the suspension of normal activities. Capacities would be reduced if the facilities were to serve as shelters while continuing their primary functions.

**I. Control of Foodstuffs**

A radiological emergency at the Turkey Point Nuclear Power Plant may adversely affect the safety of open water supplies, dairy facilities and the food supply for humans and livestock. Human and animal foods may become contaminated. The health and productivity of farm livestock may be adversely affected through exposure to radioactive contamination. The physical boundary of these adverse situations cannot be defined in advance of an accident; however, for the purpose of this Plan, a geographical area within a circle having a 50-mile radius from the Turkey Point Nuclear Power Plant is defined as the ingestion pathway zone.



---

**TURKEY POINT NUCLEAR POWER PLANT SITE PLAN**

---

In the event of a radiological emergency at the Turkey Point Power Plant, the State Department of Health's Bureau of Radiation Control is the lead agency for the State Emergency Support Function 8. The Department of Agriculture and Consumer Services is a support agency to State Emergency Support Function 8. The departments will monitor the area within the 50-mile ingestion pathway zone (see Figure II-2). State Emergency Support Function 8, in conjunction with the county emergency operations centers and the county Agricultural Extension Officer will advise the agricultural community of protective actions necessary to reduce the risk of contamination of farm livestock, milk and dairy processors, farm products and potable water sources. Monitoring and laboratory analysis will be performed to determine the degree of contamination to human foods and livestock feed. Control of the food chain will be initiated and continued until advised to do otherwise by the Bureau of Radiation Control.

The Department of Environmental Protection, a support agency to State Emergency Support Function 8, will monitor the adequacy of open water supplies. Testing for contamination levels will be coordinated through the Department of Health.

Recommendations will be made to the State Coordinating Officer and to the affected counties for protective actions to be taken. The State Emergency Support Function 8 and the support agencies will also:

1. Take steps to prevent the spread of contaminated farm livestock feeds and human foods in the ingestion pathway zone, advise the public on acceptability of foodstuffs for consumption, and determine the degree of protective control.
2. During recovery, continue to evaluate radiological contamination of livestock feeds and human foods in the ingestion pathway zone, advise the public on acceptability of foodstuffs for consumption, and determine the degree of protective control.
3. Test open water sources and recommend protective actions to the State Coordinating Officer and the affected counties so the public can be fully informed.

### **XIII. Medical and Public Health Support**

Baptist and Mercy Hospitals in Miami-Dade County have the necessary equipment and trained staff capable for decontaminating and treating radioactive contaminated patients. There are no facilities available in Monroe County for treatment of contaminated patients. Those persons in Monroe County with contamination will be evacuated to medical facilities in Miami-Dade County. Individuals requiring treatment for injuries not related to accidents at the Turkey Point Nuclear Power Plant will be transported to any of the hospitals outside the 10-mile emergency planning zone that normally receive emergency patients.

**TURKEY POINT NUCLEAR POWER PLANT SITE PLAN**

---

The Miami-Dade County Department of Public Health and other public health clinics in the vicinity of shelters will be utilized for general health care of the evacuees. Additional medical response personnel will be assigned to these facilities if needed.

Personnel from Monroe County Fire Rescue in Plantation Key and Mariners Hospital in Tavernier will be utilized for general health care of evacuees. Medical response personnel will be dispatched and assigned to reception centers and shelters.

**XIV. Recovery and Re-entry**

Decision to relax protective actions and allow for recovery and re-entry will be made jointly by the State and county in accordance with procedures outlined in Chapter 13 of this Annex.

**XV. Exercises and Drills**

Exercises and drills will be conducted and scheduled in accordance with the guidelines outlined in Chapter 14 of this Annex.

**XVI. Radiological Emergency Response Training**

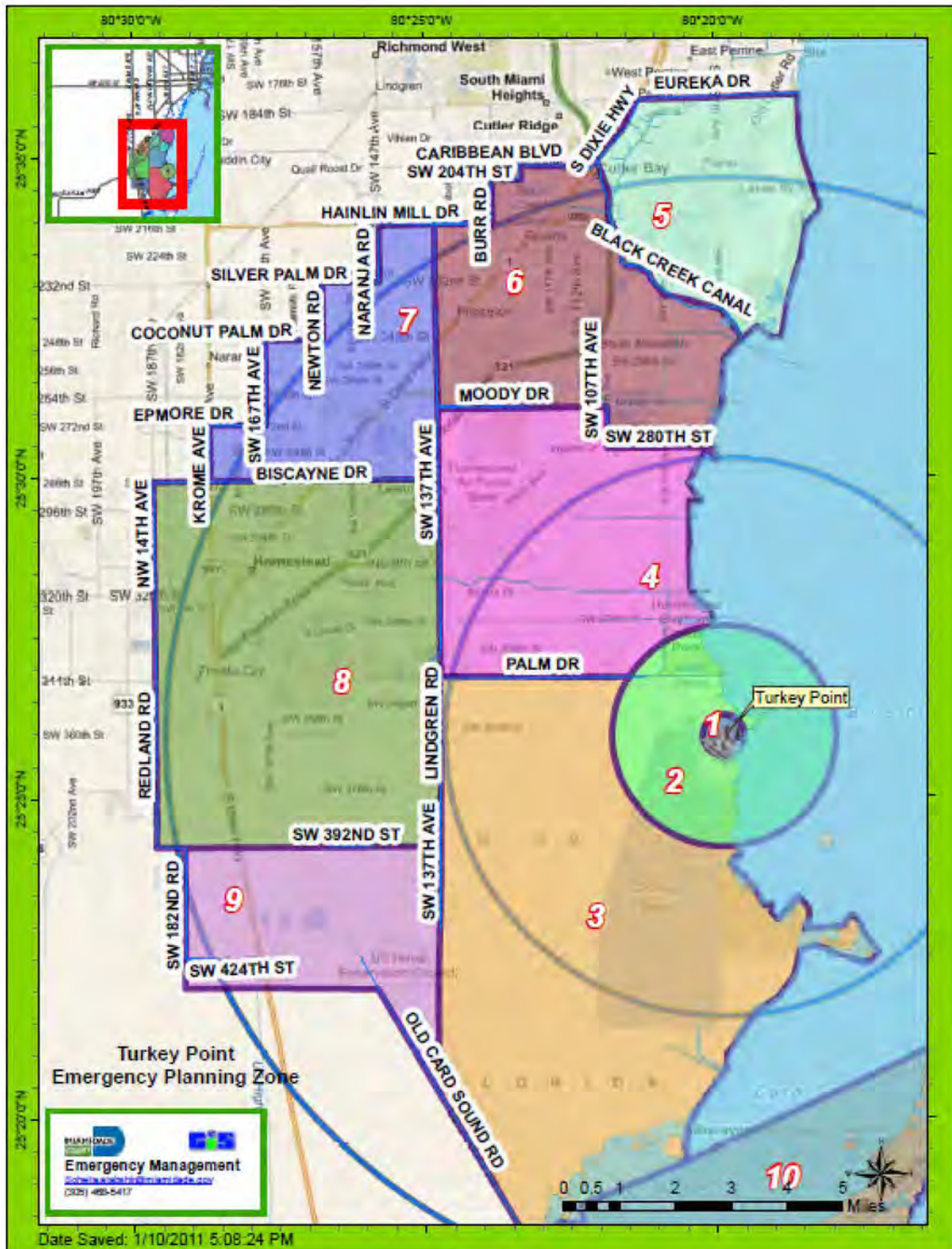
The Directors of the Miami-Dade Department of Emergency Management and Monroe County Emergency Management Department are responsible for assuring that appropriate county emergency response personnel are adequately trained, in accordance with the training levels and standards outlined in Chapter 15 of this Annex.

## TURKEY POINT NUCLEAR POWER PLANT SITE PLAN

FIGURES TABLE OF CONTENTS		PAGE
II-1	Turkey Point Nuclear Power Plant 10-mile Emergency Planning Zone .....	II-35
II-2	Turkey Point Nuclear Power Plant 50-mile Ingestion Pathway Zone .....	II-36
II-3	Miami-Dade County Primary/Support Responsibilities .....	II-37
II-4	Miami-Dade County Organizational Chart.....	II-38
II-5	Monroe County Primary/Support Responsibilities .....	II-39
II-6	Monroe County Organizational Chart.....	II-41
II-7	Miami-Dade County Emergency Operations Centers and Facilities .....	II-42
II-8	Monroe County Emergency Operations Centers.....	II-43
II-9	Miami-Dade County Reception Centers and Shelters .....	II-44
II-10	Miami-Dade County Monitoring/Washdown Stations .....	II-47
II-11	Monroe County Monitoring/Washdown Stations, Reception Centers, and Shelters .....	II-48
II-12	Miami-Dade and Monroe County Radiological Emergency Equipment and Supplies.....	II-50
II-13	Medical/Special Needs Facilities, Turkey Point 10 mile Emergency Planning Zone .....	II-52
II-14	Population Distribution, Turkey Point 10 mile Emergency Planning Zone .....	II-58
II-15	Evacuation Routes, Turkey Point 10 mile EPZ.....	II-59
II-16	Evacuation Time and Traffic Capacity Estimates, Turkey Point 10 mile Emergency Planning Zone .....	II-60
II-17	Schools, Turkey Point 10-mile Emergency Planning Zone.....	II-61
II-18	Daycare Centers, Turkey Point 10-mile Emergency Planning Zone .....	II-66
II-19	Public/Private Airports and Emergency Hospital Helipads .....	II-77

## TURKEY POINT NUCLEAR POWER PLANT SITE PLAN

FIGURE II-1  
TURKEY POINT NUCLEAR POWER PLANT 10 MILE EMERGENCY PLANNING ZONE





## TURKEY POINT NUCLEAR POWER PLANT SITE PLAN

FIGURE II-2  
TURKEY POINT NUCLEAR POWER PLANT 50-MILE INGESTION PATHWAY ZONE

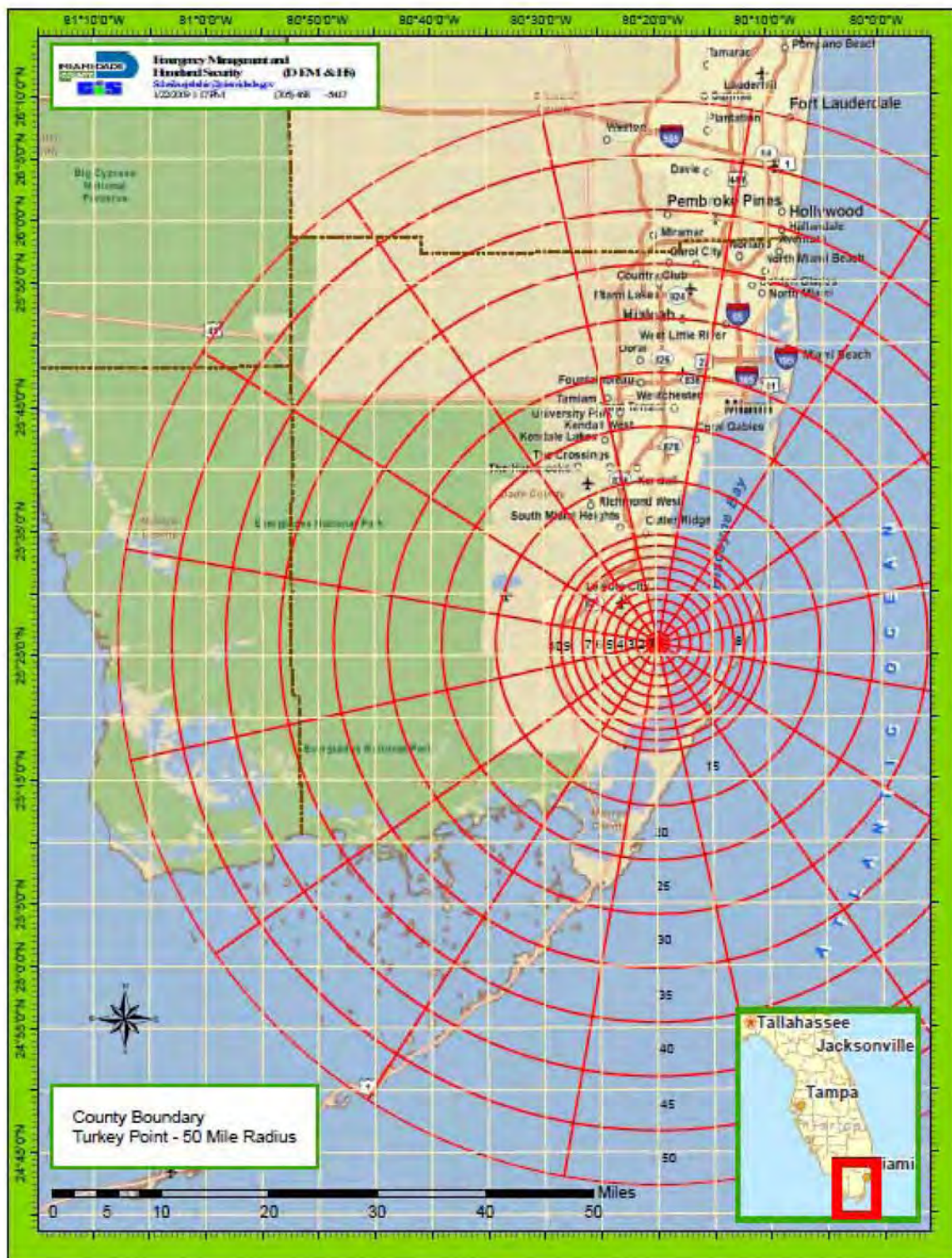




FIGURE II-3 (CONTINUED)

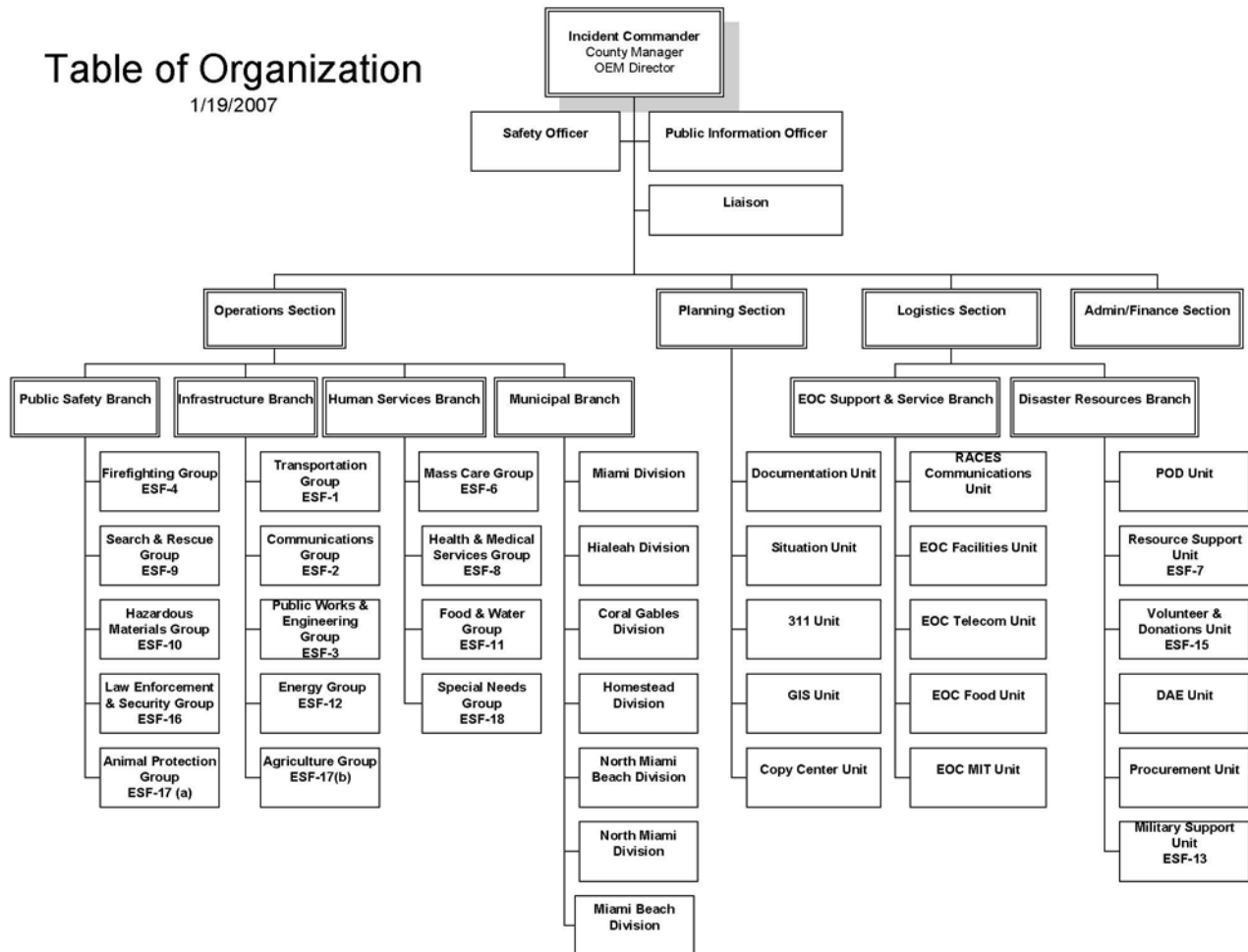
Responsibilities Matrix		Incident Response Functions																					
		Direction & Control	Alert & Notification	Communications	Accident Assessment	Protective Measures	Transportation	Public Alert & Notification	Public Information	Rumor Control	Radiation Exposure Control	Decontamination	Security/Law Enforcement	Traffic Control	Radiological Monitoring	Sheltering	Food & Water	Social Services	Public Health & Sanitation	Emergency Medical Services	Emergency Financial Assistance	Firefighting	
Mayor or designee (DEM Director)	P	P	P	P	P	P	P	P	P	S													
Miami-Dade DEM	P	P	P	P	P	P	P	P	P	S													
Florida Division of Emergency Mgmt.	S	P	S	S	P	S	S	S	P	S										S			
Miami-Dade Police Department		S	S	S	S	S	S	S	S	P													
Miami-Dade Fire Rescue Department		S	S	S	S	S	S	S	S	P										P		P	
Homestead Police Department		S	S	S	S	S	S	S															
Florida City Police Department		S	S	S	S	S	S	S															
National Park Service				S	S		S																
Environmental Resource Mgmt. Dept.																							
Miami-Dade Public Works																							
FL Bureau of Radiation Control			S		S				P	P		S	S		P								
FDLE/Florida Highway Patrol		S		S	S		S					S	S										
Miami-Dade County Health Dept.								S		S		S	S	S	S	S	P	S					
Miami-Dade Solid Waste Dept.																		S					
American Red Cross						S								P	P	P	P						
U.S. Department of Energy					S			S	S	S			S										
U.S. Nuclear Regulatory Commission					S			P		S		S											
Federal Emergency Mgmt. Agency						S														S			
Florida Power & Light				S	S		P	S	S	S		S	S										
Miami-Dade Corrections Department		S		S	S	S					S												
Miami-Dade School Board					P																		
Miami-Dade Transit					S	P																	
U.S. Department of Agriculture				S																S			
American Nuclear Insurers																				P			
U.S. Coast Guard		S		S	S		S		S			S											
3-1-1									P														
P = Primary S = Support																							

## TURKEY POINT NUCLEAR POWER PLANT SITE PLAN

FIGURE II-4  
MIAMI-DADE COUNTY ORGANIZATIONAL CHART

## Table of Organization

1/19/2007



---

**TURKEY POINT NUCLEAR POWER PLANT SITE PLAN**


---

**FIGURE II-5  
MONROE COUNTY PRIMARY/SUPPORT RESPONSIBILITIES**

Direction and Control:	<u>Primary:</u> Emergency Management Department <u>Support:</u> Emergency Management Department; State of Florida
Emergency Alert/Notification:	<u>Primary:</u> Communications, Ocean Reef Public Safety, Emergency Management Department, State of Florida
Communications:	<u>Primary:</u> Communications, Emergency Management Department; State of Florida
Accident Assessment:	<u>Primary:</u> Florida Department of Health-Bureau of Radiation Control; Licensee
Protective Response:	<u>Primary:</u> Emergency Management Department, County Mayor <u>Support:</u> State of Florida
Public Alert/Notification:	<u>Primary:</u> Communications <u>Support:</u> Emergency Management, Ocean Reef Public Safety, Fire Rescue, Sheriff's Office
Public Information:	<u>Primary:</u> Sheriff's Office PIO <u>Support:</u> Emergency Management, State of Florida, Licensee
Radiological Exposure Control:	<u>Primary:</u> Fire Rescue, Licensee <u>Support:</u> Florida Department of Health-Bureau of Radiation Control
Decontamination:	<u>Primary:</u> Fire Rescue
Control of Access to Evacuated Area:	<u>Primary:</u> Sheriff's Office, Florida Highway Patrol <u>Support:</u> Fish and Wildlife Commission, Fire Rescue
Field Monitoring and Sampling:	<u>Primary:</u> Florida Department Health-Bureau of Radiation Control <u>Support:</u> Licensee
Registration of Evacuees:	<u>Primary:</u> American Red Cross
Fire & Rescue:	<u>Primary:</u> Fire Rescue



## Appendix II

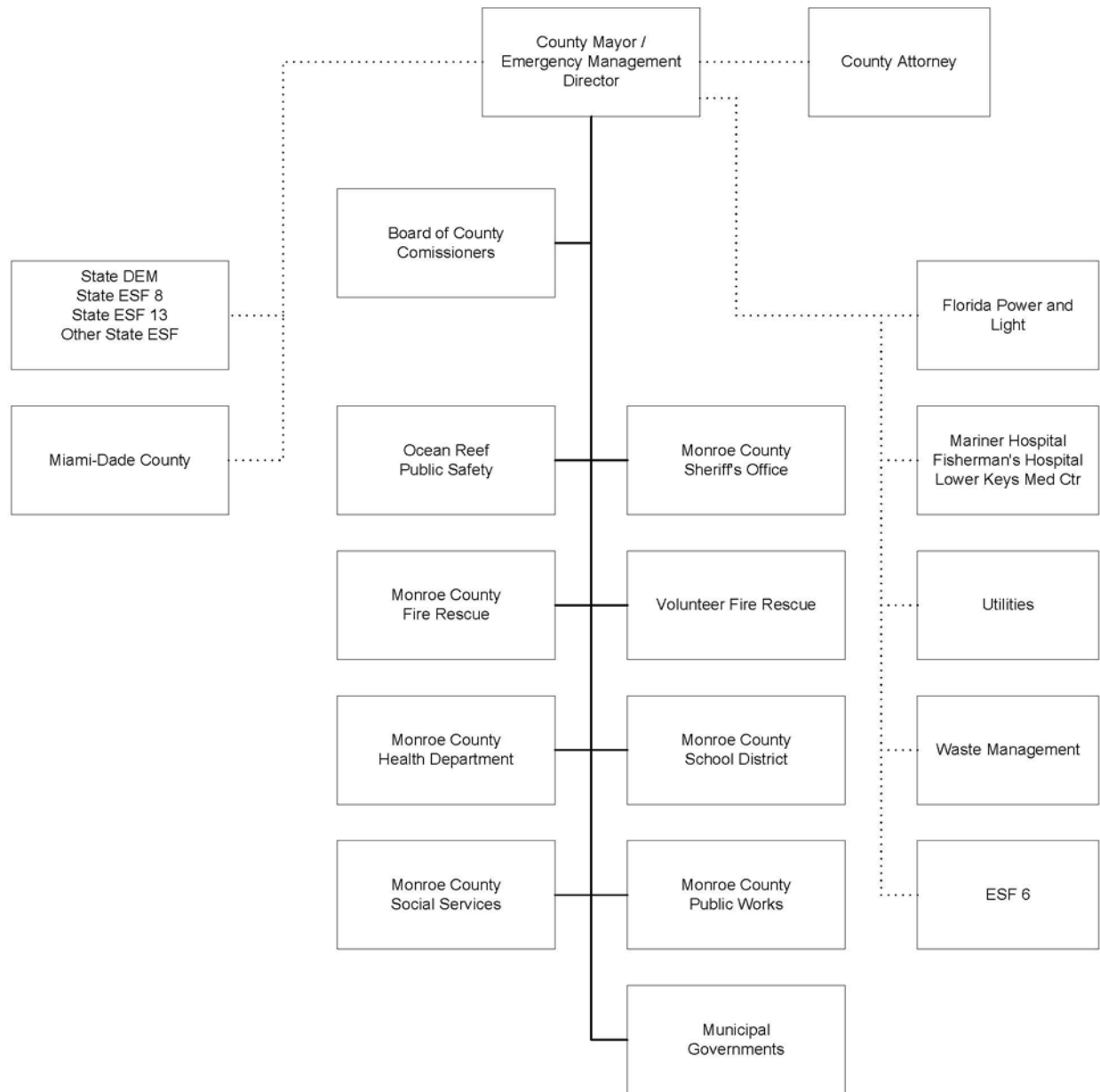
### TURKEY POINT NUCLEAR POWER PLANT SITE PLAN

---

	Support: Ocean Reef Public Safety
Emergency Medical Services:	<u>Primary:</u> Fire Rescue/EMS Key Largo Ambulance <u>Support:</u> Department of Public Health, Ocean Reef Public Safety,
Law Enforcement:	<u>Primary:</u> Sheriff's Office, Florida Highway Patrol <u>Support:</u> Fish and Wildlife Commission
Transportation:	<u>Primary:</u> Social Services Department, School District <u>Support:</u> Emergency Management Department; Ocean Reef Public Safety; Volunteer Ambulance
Food Quality:	<u>Primary:</u> DOH
Potable Water:	<u>Primary:</u> DOH
Shelter/Care:	<u>Primary:</u> American Red Cross, School District
Public Health/Sanitation:	<u>Primary:</u> DOH <u>Support:</u> Solid Waste Management, State of Florida
Social Services:	<u>Primary:</u> Social Services Department <u>Support:</u> State of Florida
Road Passage/Maintenance:	<u>Primary:</u> Public Works Division, Florida Department of Transportation
Security:	<u>Primary:</u> Sheriff's Office <u>Support:</u> Florida Highway Patrol, Fish and Wildlife Commission
Traffic Control:	<u>Primary:</u> Sheriff's Office <u>Support:</u> Florida Highway Patrol, Fish and Wildlife Commission
Recovery and Re-entry:	<u>Primary:</u> Florida Department of Health-Bureau of Radiation Control, Emergency Management Department, Licensee

TURKEY POINT NUCLEAR POWER PLANT SITE PLAN

FIGURE II-6  
MONROE COUNTY ORGANIZATIONAL CHART

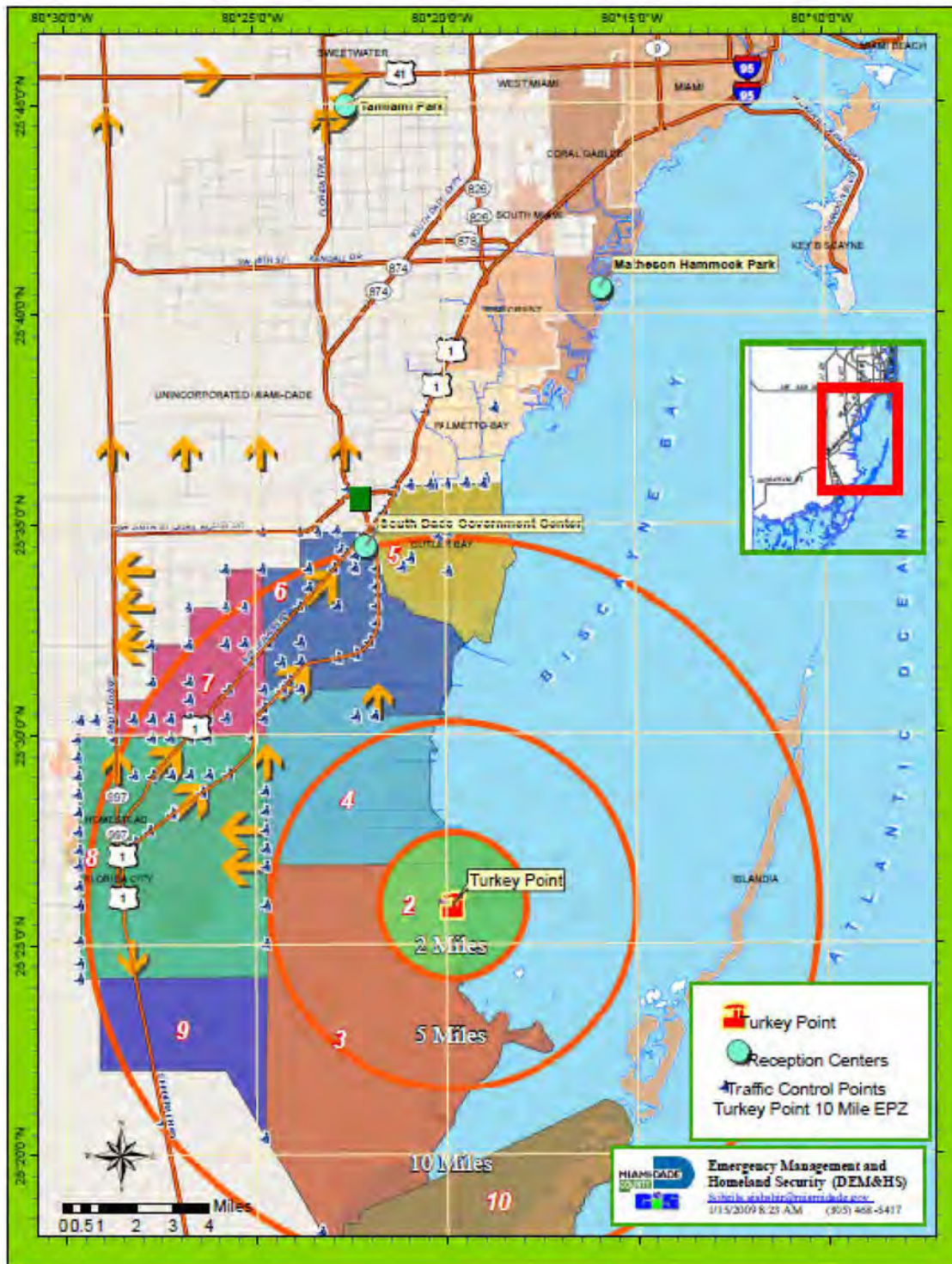


Direction and Control —————  
Coordination .....

Revised 06/2011

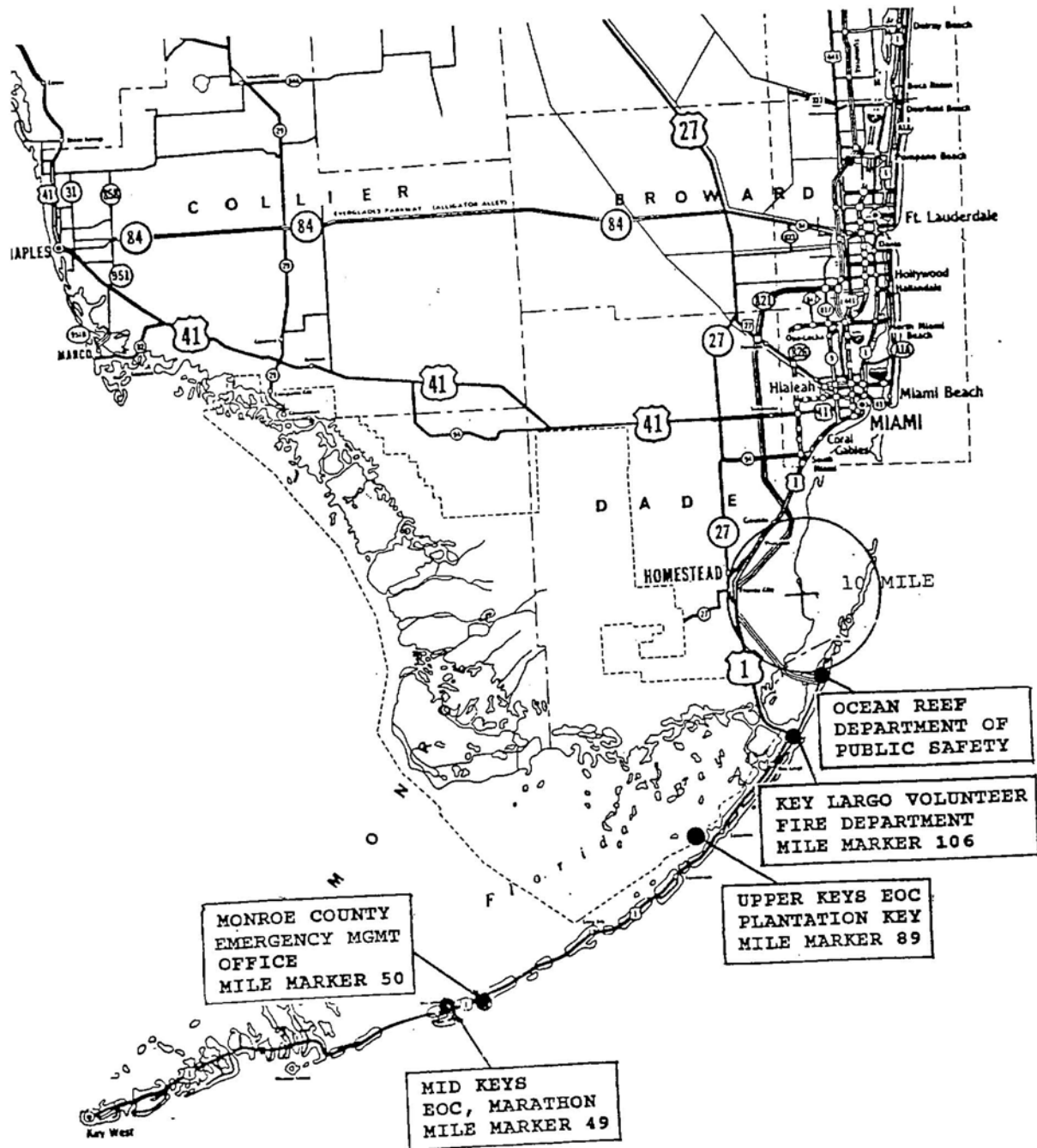
## TURKEY POINT NUCLEAR POWER PLANT SITE PLAN

FIGURE II-7  
 MIAMI-DADE COUNTY EMERGENCY OPERATIONS CENTERS AND FACILITIES



TURKEY POINT NUCLEAR POWER PLANT SITE PLAN

FIGURE II-8  
MONROE COUNTY EMERGENCY OPERATION CENTERS



## TURKEY POINT NUCLEAR POWER PLANT SITE PLAN

**FIGURE II-9  
MIAMI-DADE COUNTY RECEPTION CENTERS AND SHELTERS**

<b>EMERGENCY RECEPTION CENTERS</b>	<b>CAPACITY</b>
1. Tamiami Park (Primary) 10901 Coral Way Miami Florida	5000*
2. Florida International University (Secondary) 10700 SW 8th Street (Tamiami Trail) Miami, Florida	

<b>EMERGENCY SHELTER/CARE CENTERS</b>	<b>CAPACITY</b>
<i>Primary Shelters</i>	
1. Barbara Goleman Senior 14100 NW 89th Ave	1248
2. Charles R Drew Middle 1801 NW 60th St	1050
3. Dr Michael M Krop Senior 1410 NE 215th St	3383
4. Felix Valera Senior 15255 SW 96th St	2913
5. South Miami Senior 6856 SW 53rd St	2500
6. Doral Middle 5005 NW 112th Ave	1357
7. Miami Carol City Senior 3422 NW 187th St	2322
8. Miami Coral Park Senior 8865 SW 16th St	1131
9. North Miami Beach Senior 1247 NE 167th St	3152
10. W R Thomas Middle 13001 SW 26th St	2050
11. Dr Carlos J Finlay Elementary 851 SW 117th Ave	1407
12. Hialeah-Miami Lakes Senior 7977 W 12th Ave	1264
13. Miami Sunset Senior 13125 SW 72nd St	1085
14. North Miami Middle 13105 NE 7th Ave	1303
15. Orchard Villa Elementary 5720 NW 13th Ave	1179

## TURKEY POINT NUCLEAR POWER PLANT SITE PLAN

FIGURE II-9 continued

EMERGENCY SHELTER/CARE CENTERS		CAPACITY
<i>Secondary Shelters</i>		
1.	Ben Sheppard Elementary 5700 W 24th Ave	1420
2.	Hammocks Middle 9889 Hammocks Blvd	1467
3.	Miami Southridge Senior 19355 SW 114th Ave	1082
4.	Palm Lakes Elementary 7450 W 16th Ave	649
5.	Paul L Dunbar Elementary 505 NW 20th St	786
6.	Eneida M Hartner Elementary 401 NW 29th St	1306
7.	Claude Pepper Elementary 14550 SW 96th St	1258
8.	Miami Northwestern Senior 1100 NW 71st St	567
9.	Palmetto Senior 7460 SW 118th St	2313
10.	Sunshine Pavilion at Tamiami Park 10901 Coral Way	2450
11.	Dante Fascell Elementary 15625 SW 80th St	931
12.	Gilbert Porter Elementary 15851 SW 112th St	1769
13.	Joe Hall Elementary 1901 SW 134th Ave	914
14.	Olinda Elementary 5536 NW 21st Ave	1701
15.	Stirrup Elementary 330 NW 97th Ave	775
<i>Tertiary Shelters</i>		
1.	Bowman Foster Ashe Elementary 6601 SW 152nd Ave	1386
2.	Calusa Elementary 9580 W Calusa Club Dr	900
3.	Citrus Grove Middle 2153 NW 3rd St	447
4.	Greynolds Park PLC 1575 NE 177th St	519
5.	James Bright Elementary 2530 W 10th Ave	1208
6.	Kelsey L Pharr Elementary 2000 NW 46th St	569
7.	Lake Stevens Elementary 5101 NW 183rd St	1018

## TURKEY POINT NUCLEAR POWER PLANT SITE PLAN

FIGURE II-9 continued

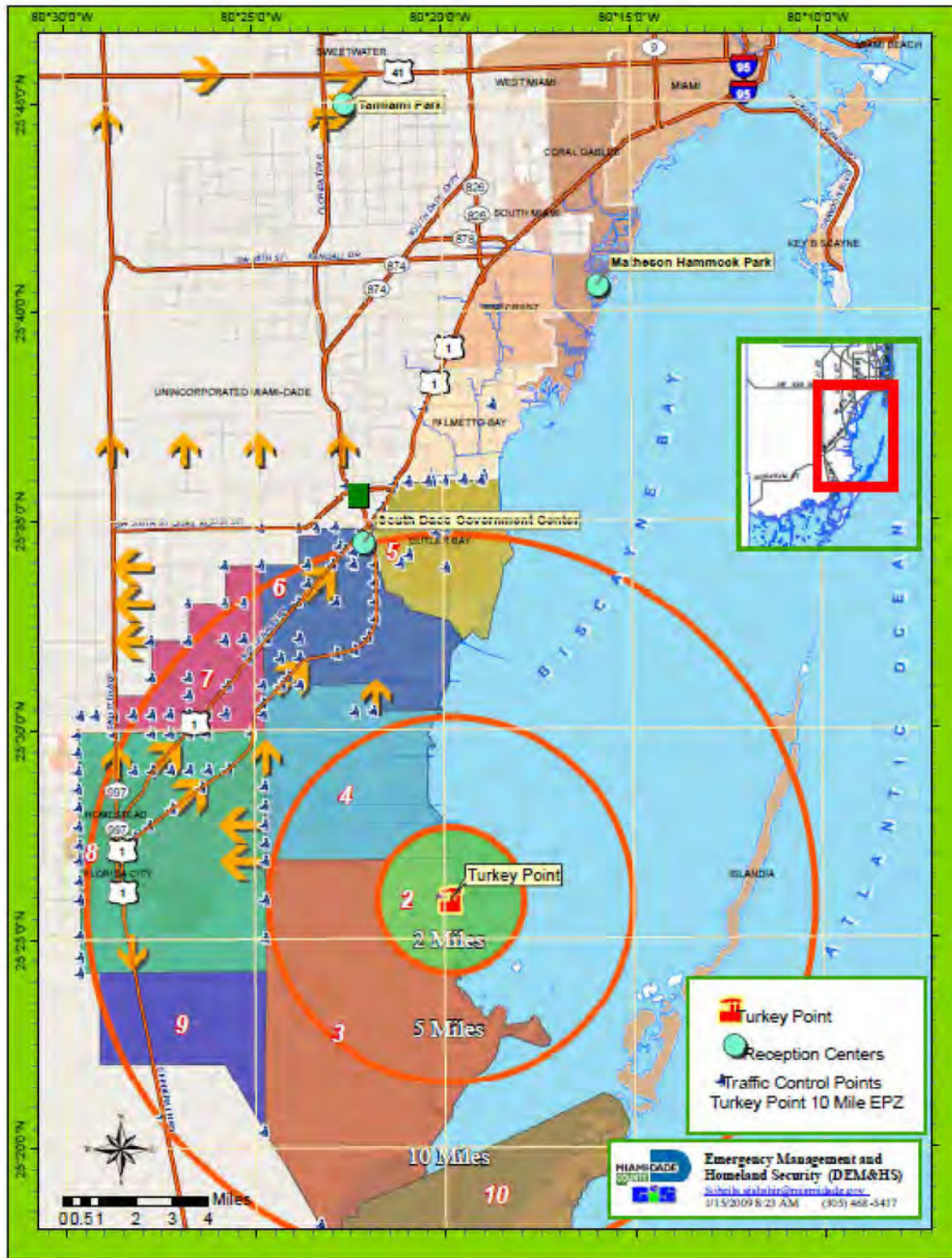
<b>EMERGENCY SHELTER/CARE CENTERS</b>		<b>CAPACITY</b>
<i>Tertiary Shelters (continued)</i>		
8.	M S Douglas Elementary 11901SW 2nd St	1569
9.	Miami Killian Senior 10655 SW 97th Ave	420
10.	Miami Shores Elementary 10351 NE 5th Ave	287
11.	Norwood Elementary 19810 NW 14th Ct	1027
12.	Oliver Hoover Elementary 9050 Hammocks Blvd	1273
13.	Palm Springs North Elementary 17615 NW 82nd Ave	1029
14.	Royal Green Elementary 13047 SW 47th St	563
15.	Ruth Kruse Owens 11001 SW 76th St	741
16.	Southwood Middle 16301 SW 80th Ave	516
17.	Village Green Elementary 12265 SW 34th St	565
<b>TOTAL CAPACITY</b>		<b>60769</b>



## Appendix II

### TURKEY POINT NUCLEAR POWER PLANT SITE PLAN

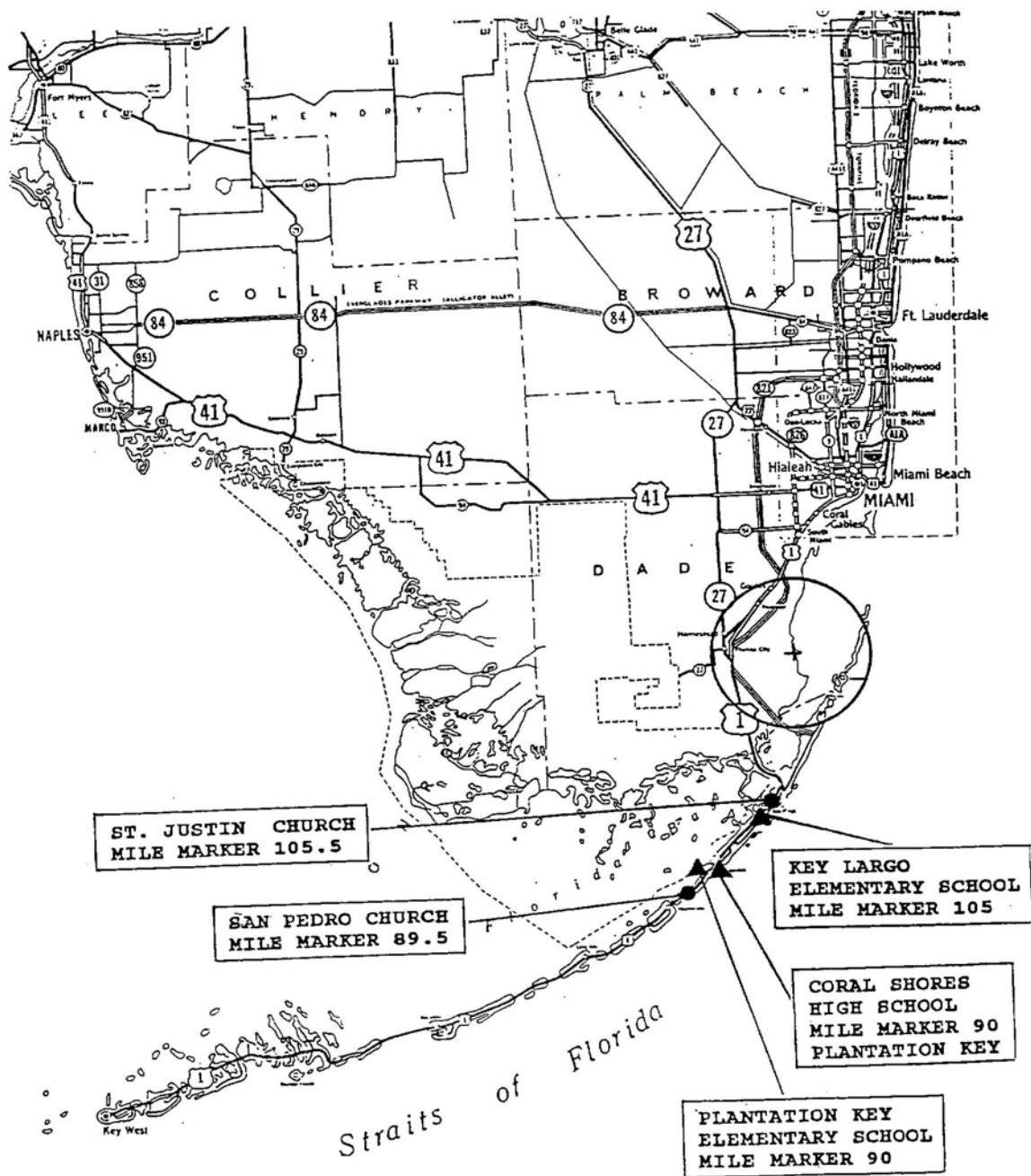
FIGURE II-10  
MIAMI-DADE COUNTY MONITORING AND WASHDOWN STATIONS





## TURKEY POINT NUCLEAR POWER PLANT SITE PLAN

FIGURE II-11  
MONROE COUNTY MONITORING & WASHDOWN STATIONS,  
RECEPTION CENTERS, AND SHELTERS



TURKEY POINT NUCLEAR POWER PLANT SITE PLAN

---

FIGURE II-11 continued

EMERGENCY WORKER MONITORING & WASHDOWN STATION AND RECEPTION CENTER

Vehicle Washdown Station  
Key Largo Fire Station #2  
Mile Marker 106

<u>SHELTER RECEPTION CENTER</u>	<u>CAPACITY</u>
---------------------------------	-----------------

*Key Largo School Mile Marker 105 (oceanside)	1,435
--	-------

Total	1,435
-------	-------

\*Primary monitoring/decontamination station and reception center

**TURKEY POINT NUCLEAR POWER PLANT SITE PLAN**

---

**FIGURE II-12  
MIAMI-DADE COUNTY RADIOLOGICAL EMERGENCY EQUIPMENT AND SUPPLIES**

**RADIOLOGICAL MONITORING EQUIPMENT**

(45) CDV 777-1 radiological emergency response kits that include:

- 1 - CDV-700 low range detection meter
- 1 - CDV-715 high range detection meter
- 6 - Ludlum portal monitors

**DOSIMETRY**

500 dosimeter badges  
500 CDV 139 dosimeters  
500 CDV - 742 (0-200R)

**PROTECTIVE CLOTHING**

Fire/Rescue full turnout gear  
Helmet  
Nomex coat  
Rubber boots  
Rubber gloves  
Tyvek suits  
Self contained breathing apparatus  
Law Enforcement all weather protective clothing

**EMERGENCY EQUIPMENT**

Decontamination equipment and supplies

**COMMUNICATIONS EQUIPMENT**

Hot Ring Down, dedicated telephone system  
Emergency Satellite Communications System  
Local Government 800 MHz Radio (Miami-Dade County)  
Amateur Radio  
Fire/Rescue Network  
Law Enforcement Network  
Med-Com  
Commercial Telephones  
Cellular Telephones  
Police News-FA  
Cable Television (CATV) Override

**TURKEY POINT NUCLEAR POWER PLANT SITE PLAN**

---

**FIGURE II-12  
MONROE COUNTY RADIOLOGICAL EMERGENCY EQUIPMENT AND SUPPLIES**

**RADIOLOGICAL MONITORING EQUIPMENT**

- (8) CD V-777-1 radiological emergency response kits which include:  
1 - CD V-700 Low range detection meter  
11 – Canberra Ultra/Radiac  
1 – Ludlum Portal Monitor

**DOSIMETRY**

- (45) Radiological Response Team Go Kits  
1 - CDV - 139 (0-500 mR) dosimeter  
1 - CDV - 142 (0-2R) dosimeters  
1 - TLD Thermoluminescent dosimeters
- (10) CDV - 750 Dosimeter Charging Units
- (60) - CDV 138(0-200 mR) dosimeters  
(27) – CDV 139 (0-500mR) dosimeters  
(80) – CDV – 142 (0-20R) dosimeters
- 105 – TLD Thermoluminescent dosimeters

**PROTECTIVE CLOTHING**

Fire/Rescue full turnout gear  
Helmet  
Nomex gloves  
Rubber boots  
Leather gloves  
Tyvek suits  
Self contained breathing apparatus

**EMERGENCY EQUIPMENT**

Decontamination equipment and supplies  
2 portable vehicle decontamination stations

**COMMUNICATIONS EQUIPMENT**

Hot Ring Down dedicated telephone system  
Emergency Satellite Communications System  
Dedicated telephone line between Key Largo Emergency Operation Center and Ocean Reef  
Emergency Operation Center  
Local Government Radio-Frequency Modulation (Monroe County)  
Amateur radio  
Commercial telephones  
Cable Television  
Fax Machines  
Cellular Telephones

## TURKEY POINT NUCLEAR POWER PLANT SITE PLAN

**FIGURE II-13**  
**MEDICAL FACILITIES WITHIN TURKEY POINT 10-MILE EMERGENCY PLANNING ZONE**

NAME/ADDRESS	SECTOR	ZONE
1. 22 Street Group Home (Sunrise Community 444 NW 22 Street Homestead, 33030	15	8
2. Advanced ALF, Inc 14335 SW 288 <sup>th</sup> Street Homestead, 33033	Q8	7
3. Alita and John Haran ALF 1532 Flamingo Court Homestead, 33035	P9	8
4. Angeles Assisted Living Facility, Inc 29921 SW 151 Avenue Homestead, 33033	P8	8
5. B & B Home Care #1 20625 SW 114 Place Miami, 33033	15	6
6. Bel Aire Retirement Home 9955 SW 196 Street Homestead 33030	15	5
7. Bel Aire 8830 Caribbean Blvd. Miami, 33157	A15	5
8. Belen Sweet Home ALF 11825 SW 206 <sup>th</sup> Street Miami, 33177	15	6
9. Bella Luna Retirement Home, Inc. 18700 SW 93rd Court Miami, 33157	A15	5
11. Bertha Elderly Care 9760 Memorial Road Miami, 33157	15	5
12. Bertha Elderly Care #2 10411 SW 198 <sup>th</sup> Street Miami, 33157	15	5
14. Blue Point Home Care 21910 SW 97 Court Miami, 33190	A10	5
15. Bright Happy Home, Inc 931 NE 17th Terrace Homestead, 33033	P9	8
16. Brookwood Gardens Convalescent Home 1990 South Canal Drive Homestead, 33035	P8	8
17. Caribbean Assisted Living Facility 9860 Caribbean Blvd Miami, 33189	15	5

## Appendix II

### TURKEY POINT NUCLEAR POWER PLANT SITE PLAN

18.	Cutler Bay Family Care, Inc 19431 Franjo Road Cutler Bay, 33157	15	5
19.	Cutler Bay Village 10425 SW 212th ST Miami, 33189	A10	5
20.	Del Real Home Care 13071 SW 260th Terrace Homestead, 33032	Q8	6
21.	Diaz Home Care ALF 13481 SW 268th Terrace Homestead, 33032	Q8	4
22.	Diaz Home Care ALF II, Inc 12211 SW 268th ST Homestead, 33032	R7	6
23.	Duran Home Care 26775 SW 129th Avenue Homestead, 33032	Q8	6
24.	East Ridge Retirement Village 19301 SW 87th Avenue Miami, 33157	15	5
25.	El Viejo Sol 4163 NE 16TH St Homestead, 33033	Q7	8
26.	Emanuel Adult ALF, Inc. 14950 Leisure DR Homestead, 33033	Q8	8
27.	Genesis Care Center Corp. 8395 SW 187 Terrace Miami, 33157	15	5
28.	God Is First ALF 11316 SW 246 Terrace Homestead, 33032	R8	6
29.	Good Time Home Care Corp. 8640 SW 185TH ST Cutler Bay, 33157	15	5
30.	Guardian Angel ALF 10265 Nicaragua Drive Cutler Bay, 33189	A10	5
31.	Harmony Family Home 9245 SW 208 Terrace Miami, 33189	A10	5
32.	HealthSouth Rehabilitation Hospital 20601 Old Cutler Road Miami, 33189	A10	5
33.	HealthSouth Rehabilitation Hospital of Miami 20601 Old Cutler Road Miami, 33189	A10	5

## Appendix II

### TURKEY POINT NUCLEAR POWER PLANT SITE PLAN

34.	Heaven Assisted Living Facility, Inc. 30136 SW 148 Place Homestead, 33033	P8	8
35.	Home Sweet Home 20700 SW 122nd Ave. Miami, 33177	R15	6
36.	Homestead Adult Day Care Center 653 SW 4 <sup>th</sup> Street Homestead, 33030	15	8
37.	Homestead Behavioral Clinic/Adult Day Care 654 NE 9 <sup>th</sup> Place Homestead, 33030	P10	8
38.	Homestead Hospital 975 Baptist Way Homestead, 33033	P8	8
39.	Homestead Manor 1330 NW 1 <sup>st</sup> Avenue Homestead, 33030	P10	8
40.	IFA Lola ALF, Inc 12230 SW 220 <sup>th</sup> Street Miami, 33170	R10	6
41.	Ive Home 20020 SW 113 Place Miami, 33189	15	6
42.	Ive Home II ALF 22636 SW 125 <sup>th</sup> Avenue Miami, 33170	R10	6
43.	Jackson Memorial Perdue Medical Center 19590 Old Cutler Road Miami, 33157	15	5
44.	Kayleen and Denis Care 15700 SW 296 <sup>th</sup> Street Homestead, 33033	P9	8
45.	Kenneth Home Care 10051 Haitian Drive Miami, 33189	A10	5
46.	Krome Apartments-Sunrise Community Inc. 1102 N Krome Avenue Homestead, 33030	P10	8
47.	Leisure City Home Care 14785 Coolidge Lane Homestead, 33033	Q8	8
48.	Living Well #1 24151 SW 107 <sup>th</sup> Avenue Homestead, 33032	R8	6
49.	Living Well #2 21280 Old Cutler Road Cutler Bay, 33189	A10	5
50.	Loreto Homes, Inc	15	8

## Appendix II

### TURKEY POINT NUCLEAR POWER PLANT SITE PLAN

	770 NW 9 <sup>th</sup> Court Homestead, 33030		
51.	M & J Quality Home Care, LLC 13231 SW 278 <sup>th</sup> Terrace Homestead, 33032	Q8	4
52.	Margreg Facilities 12412 SW 213 Terrace Miami, 33177	15	6
53.	Maria Home Care 14615 SW 288 <sup>th</sup> Street Miami, 33033	Q8	7
54.	Marlin Retirement ALF 20610 Marlin Road Cutler Bay, 33189	A10	5
55.	MD ALF 15735 SW 303 Terrace Homestead, 33033	P9	8
56.	Meadow Wood Homes 25799 SW 122 <sup>nd</sup> Place Miami, 33032	R8	6
57.	Merline's Place 28412 SW 135th Avenue Homestead, 33033	Q7	4
58.	Mi Renacer ALF 1305 SE 7th Street Homestead, 33033	P9	8
59.	Mother Golden Years II 29332 SW 143rd Court Homestead, 33033	Q8	8
60.	Mother Golden Years III 13621 SW 281st Terrace Homestead, 33033	Q8	4
61.	My Sweet Home 11312 SW 203rd Terrace Miami, 33189	R15	6
62.	Naranja Group Home 15190 SW 272 <sup>nd</sup> Street Naranja, 33032	Q9	7
63.	New Horizon Assisted Living 30110 SW 145 <sup>th</sup> Court Homestead, 33033	P8	8
64.	Nuestro Hogar 9384 SW 184TH TER Miami, 33157	15	5
65.	Old Cutler Retirement Home 21640 Old Cutler Road Miami, 33190	A10	5



## Appendix II

### TURKEY POINT NUCLEAR POWER PLANT SITE PLAN

66.	Palace Gardens - North 1351 North Krome Avenue Homestead, 33030	P10	8
67.	Paradise Villa ALF 21164 SW 92nd Place Cutler Bay, 33189	A10	5
68.	Paula's Mansion ALF 13206 SW 218th Terrace Miami, 33170	15	6
69.	Peace and Care South ALF 24027 SW 111 Avenue Miami, 33032	R9	6
70.	Pina & Fuerte Adult Care 14935 SW 297 St Homestead, 33033	P8	8
71.	Precious Moments ALF, Inc 9480 Dana Road Cutler Bay, 33157	15	5
72.	Rafaela's Home 20560 SW 113th Road Miami, 33189	15	6
73.	Rick and Dauvy ALF, Inc. 23120 SW 124th Avenue Miami, 33170	R10	6
74.	Riverside Senior Care 22712 SW 103 <sup>rd</sup> Court Miami, 33190	A9	5
75.	Rodeck ALF 9700 Montego Bay Drive Miami, 33189	A10	5
76.	San Rafael Home Health 13373 SW 283 <sup>rd</sup> Street Homestead, 33033	Q7	4
77.	Sara Home Care 29100 SW 172nd Avenue Miami, 33030	P10	8
78.	Serenity Adult Home Care Service 15401 SW 277 <sup>th</sup> Street Homestead, 33032	Q9	7
79.	Sol Radiante Inc. 221 NE 15 <sup>th</sup> Street Homestead, 33030	P10	8
80.	South Dade Adult Care Center 19590 Old Cutler Road Miami, 33157	15	5
81.	South Dade Homeless Asst. Health Center 28205 SW 125 <sup>th</sup> Avenue Homestead, 33033	Q7	4
82.	South Florida ALF	P9	8

## Appendix II

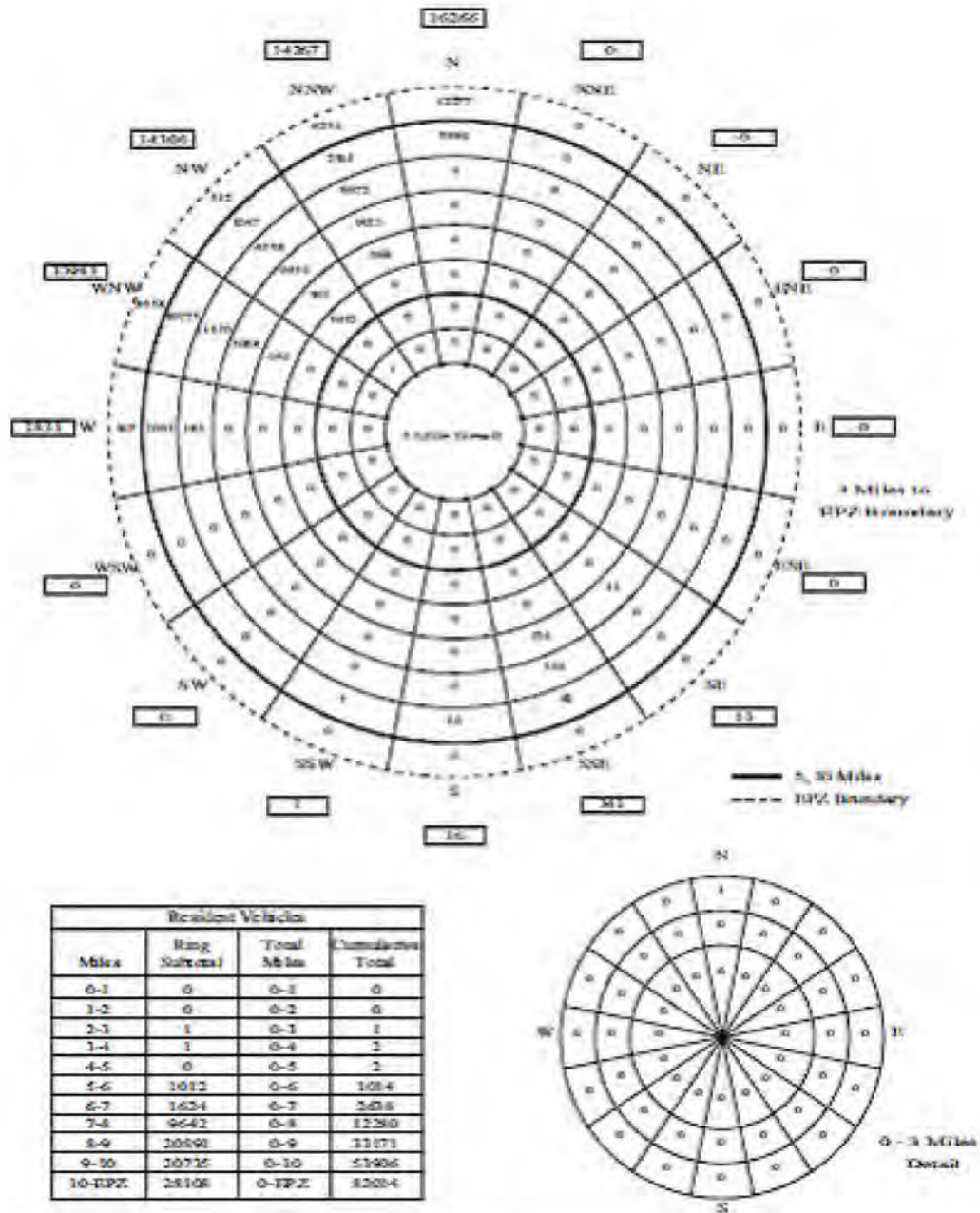
### TURKEY POINT NUCLEAR POWER PLANT SITE PLAN

	15994 SW 303 <sup>rd</sup> Terrace Homestead, 33033		
83.	St. Mary Adult Care #2 11271 SW 229 <sup>th</sup> Terrace Miami, 33170	R9	6
84.	Suany's Home 20411 SW 115 <sup>th</sup> Road Miami, 33189	15	6
85.	Swankridge Care Center 122 NW 7th Street Homestead, 33030	P10	8
86.	Swankridge Care Center II 120 NW 17th street Homestead, 33030	P15	8
87.	Sweet Mansion ALF, Inc 16925 SW 300TH ST Homestead, 33030	P10	8
88.	Sylvia's Senior Home II 23025 SW 120th Avenue Miami, 33170	R10	6
89.	The Gill Family Home Corp. 15201 SW 297 <sup>th</sup> Street Homestead, 33033	P8	8
90.	The Haven Retirement Home, Inc. 10601 Caribbean Boulevard Miami, 33189	A15	5
91.	Vereda Nueva, Inc. 12412 SW 215th Lane Miami, 33177	15	6
92.	Vicky's ALF 12438 SW 266 <sup>th</sup> Lane Homestead, 33032	R8	6
93.	Welcome Home ALF Corp. 8950 SW 215 <sup>th</sup> Terrace Cutler Bay, 33189	A10	5
94.	Whispering Pines Home Care, Inc 8830 SW 196 <sup>th</sup> Drive Cutler Bay, 33157	15	5

## Appendix II

### TURKEY POINT NUCLEAR POWER PLANT SITE PLAN

**FIGURE II-14**  
**POPULATION DISTRIBUTION, TURKEY POINT 10-MILE EMERGENCY PLANNING ZONE**  
**MIAMI-DADE AND MONROE COUNTIES**



## TURKEY POINT NUCLEAR POWER PLANT SITE PLAN

FIGURE II-15  
EVACUATION ROUTES, TURKEY POINT 10-MILE EMERGENCY PLANNING ZONE





## Appendix II

### TURKEY POINT NUCLEAR POWER PLANT SITE PLAN

**FIGURE II-16**  
**EVACUATION TIME AND TRAFFIC CAPACITY ESTIMATES, TURKEY POINT 10-MILE**  
**EMERGENCY PLANNING ZONE**

Turkey Point Units 6 & 7  
Evacuation Time Estimate

**Table 7-1D**  
**Time (hr:min) to Clear the Indicated Area of 100% of the Affected Population**

	Summer		Summer		Summer		Winter		Winter		Winter	Winter
	Midweek		Weekend		Midweek Weekend		Midweek		Weekend		Midweek Weekend	Midweek
Scenario:	1	2	3	4	5	Scenario:	6	7	8	9	10	11
Region	Midday		Midday		Evening	Region	Midday		Midday		Evening	Midday
	Good Weather	Rain	Good Weather	Rain	Good Weather		Good Weather	Rain	Good Weather	Rain	Good Weather	Construction
Entire 2-Mile Region, 5-Mile Region, and EPZ												
R01	2:05	2:05	2:05	2:05	2:05	R01	2:05	2:05	2:05	2:05	2:05	2:05
R02	6:00	6:00	6:00	6:00	6:00	R02	6:00	6:00	6:00	6:00	6:00	7:55
R03	9:15	10:15	8:45	9:40	7:30	R03	9:30	10:35	9:05	10:05	7:40	13:50
5-Mile Ring and Keyhole to EPZ Boundary												
R04	6:30	7:10	6:20	6:55	6:20	R04	6:40	7:25	6:30	7:15	6:20	8:55
R05	8:55	9:55	8:25	9:25	7:10	R05	9:10	10:10	8:45	9:45	7:20	13:25
R06	6:00	6:00	6:00	6:00	6:00	R06	6:00	6:00	6:00	6:00	6:00	8:05
R07	6:00	6:00	6:00	6:00	6:00	R07	6:00	6:00	6:00	6:00	6:00	8:05
R08	7:30	8:15	7:00	7:45	6:25	R08	7:45	8:35	7:20	8:05	6:20	12:00
R09	8:00	8:45	7:30	8:10	6:45	R09	8:15	9:05	7:50	8:40	6:50	12:30
R10	8:55	9:55	8:25	9:25	7:10	R10	9:10	10:10	8:45	9:45	7:20	13:25
R11	9:15	10:15	8:45	9:40	7:30	R11	9:30	10:35	9:05	10:05	7:40	13:50
R12	6:50	7:30	6:30	7:10	6:20	R12	7:00	7:45	6:45	7:30	6:20	9:20

## TURKEY POINT NUCLEAR POWER PLANT SITE PLAN

**FIGURE II-17**  
**SCHOOLS, TURKEY POINT 10-MILE EMERGENCY PLANNING ZONE**

<b>PUBLIC SCHOOLS</b>			
<i>Facility Name</i>	<i>Address</i>	<i>Zip Code</i>	<i>Area</i>
Air Base Elementary	12829 SW 272 St., Homestead	33032	4
ASPIRA South Youth Leadership Charter School	13330 SW 288TH ST, Miami	33033	4
Avocado Elementary	16969 SW 294 St., Homestead	33030	8
Bel-Aire Elementary	10205 SW 194 St.	33157	5
Campbell Drive Elementary	15790 SW 307 St., Leisure City	33033	8
Campbell Drive Middle	900 NE 23 Ave., Homestead	33033	8
Caribbean Elementary	11990 SW 200 St.	33177	6
Centennial Middle	8601 SW 212 St.	33189	5
Coconut Palm K-8 Academy	24400 SW 124TH AVE, Miami	33032	6
College of Business & Technology Cutler Bay - Cut*	19151 S DIXIE HWY, Cutler Bay	33157	5
Coral Reef Montessori Academy Charter School	10853 SW 216TH ST, Miami	33170	6
Corporate Academy South SHS	2351 SE 12 Ave., Homestead	33034	8
Countryside Early Learning Center	15395 SW 288TH ST, Miami	33033	7
Cutler Ridge Elementary	20210 Coral Sea Rd.	33189	5
Cutler Ridge Middle	19400 Gulfstream Rd.	33157	5
Dr. Edward L. Whigham Elementary	21545 SW 87TH AVE, Miami	33189	5
Dr. Edward L. Whigham PLC-E	8035 SW 196TH ST, Cutler Bay	33189	5
Florida City Elementary	364 NW 6 Ave., Florida City	33034	8
Gateway Environmental K-8 Learning Center	955 SE 18TH AVE, Homestead	33035	8
Goulds Elementary	23555 SW 112TH AVE, Miami	33032	6
Gulfstream Elementary	20900 SW 97 Ave.	33189	5
Homestead Middle	650 NW 2 Ave., Homestead	33030	8
Homestead Senior High School	2351 SE 12 Ave., Homestead	33035	8
Irving & Beatrice Peskoe Elementary	29035 SW 144TH AVE, Miami	33033	8
Keys Gate Charter School	2000 SE 28TH AVE, Homestead	33035	8

## TURKEY POINT NUCLEAR POWER PLANT SITE PLAN

FIGURE II-17 continued

<b>PUBLIC SCHOOLS Cont'd</b>			
<i>Facility Name</i>	<i>Address</i>	<i>Zip Code</i>	<i>Area</i>
Keys Gate Charter Senior High	1601 SE 28TH AVE, Homestead	33035	8
Laura C. Saunders Elementary	505 SW 8TH ST, Homestead	33030	8
Lawrence Academy Elementary Charter School	777 W PALM DR, Florida City	33034	8
Lawrence Academy Middle School	777 W PALM DR, Florida City	33034	8
Lawrence Academy Senior High Charter School	777 W PALM DR, Florida City	33034	8
Leisure City K-8 Center	14950 SW 288 St., Homestead	33033	8
Lincoln-Marti Charter Schools International Campus	103 E LUCY ST, Florida City	33034	8
Mandarin Lakes K-8 Academy	12225 SW 280TH ST, Miami	33032	4
Mavericks High of South Miami Dade County	698 N HOMESTEAD BLVD, Homestead	33030	8
Mays Middle	11700 SW 216 St., Goulds	33170	6
Medical Academy For Science And Technology	955 SE 18TH AVE, Homestead	33035	8
Miami Community Charter Elementary School	101 S REDLAND RD, Florida City	33034	8
Miami Community Charter Middle School	35202 S DIXIE HWY, Florida City	33034	8
Miami Community Charter Senior High	35202 S DIXIE HWY, Florida City	33034	8
Neva King Cooper Educational Center	151 NW 5TH ST, Homestead	33030	8
Pine Villa Elementary	21799 SW 117 Ct., Goulds	33170	6
Redondo Elementary	18480 SW 304 St., Homestead	33030	8
School For Advanced Studies Homestead	500 COLLEGE TER, Homestead	33030	8
School for Integrated Academics & Technologies (SIAtch) Main	12350 SW 285TH ST, Homestead	33033	4
Somerset Academy Charter Elementary School (SoHo)	300 SE 1ST DR, Homestead	33030	8
Somerset Academy Charter Middle School South (SoHo)	300 SE 1ST DR, Homestead	33030	8
Somerset Academy Middle School South Dade	47 NW 16TH ST, Homestead	33030	8

## TURKEY POINT NUCLEAR POWER PLANT SITE PLAN

FIGURE II-17 continued

<b>PUBLIC SCHOOLS Cont'd</b>			
<i>Facility Name</i>	<i>Address</i>	<i>Zip Code</i>	<i>Area</i>
Somerset Academy Silver Palms	23255 SW 115TH AVE, Miami	33032	6
Somerset Academy Silver Palms High School	23255 SW 115TH AVE, Miami	33032	6
Somerset Academy Silver Palms High School South	23255 SW 115TH AVE, Miami	33032	6
Somerset City Arts Conservatory	1700 N KROME AVE, Homestead	33030	8
South Dade Education Center Main Campus	109 NE 8 St., Homestead	33030	7
South Dade Adult Education Skills Center Campus	28300 SW 152 Ave., Leisure City	33033	7
South Dade Senior High	28401 SW 167 Ave., Homestead	33030	7
Summerville Advantage Academy	11575 SW 243RD ST, Miami	33032	6
The Charter School at Waterstone	855 WATERSTONE WAY, Homestead	33033	8
Whispering Pines Elementary	18929 SW 89 Rd.	33157	5
William A. Chapman Elementary	27190 SW 140TH AVE, Miami	33032	
YMAACD @ MacArthur South SH	13990 SW 264TH ST, Miami	33032	



## TURKEY POINT NUCLEAR POWER PLANT SITE PLAN

FIGURE II-17 continued

<b>PRIVATE SCHOOLS</b>			
<i>Facility Name</i>	<i>Address</i>	<i>Zip Code</i>	<i>Area</i>
Barrington Academy	1013 Redland Rd., Florida City	33034	8
Children's Rainbow Dayschool & Academy	22940 Old Dixie Hwy.	33170	6
Christian Family Academy	27500 Old Dixie Highway, Miami	33032	7
Christian Preparatory Academy Of South Dade	300 NE 15th St, Miami	33030	8
Colonial Christian School	17105 SW 296 St., Homestead	33030	8
Coral Rock Christian Academy	29351 SW 169th Ave, Miami	33030	8
Countryside Early Learning Ctr	15395 SW 288 St.	33033	7
Cutler Ridge Christian Academy	10301 Caribbean Blvd, Cutler Bay	33189	5
Cutler Ridge United Methodist Kndg	20740 Old Cutler Rd.	33189	5
Easter Seals Demonstration School	1475 NW 14th Ave, Homestead	33030	8
Faith Fellowship School	28945 SW 187th Ave, Miami	33030	8
First Assembly Christian Academy	824 West Palm Dr., Florida City	33034	8
First United Methodist Christian School	622 N Krome Ave, Homestead	33030	8
Grace Christian Preparatory	11000 SW 216th St, Miami	33170	6
Homestead Assembly Christian Academy	8460 SW 184 <sup>th</sup> Terrace, Cutler Bay	33033	5
Hope Academy	1100 Old Dixie Hwy, Homestead	33032	8
Lincoln-Marti Community Agency 13	137 NW 10th St, Homestead	33030	8
Lincoln-Marti Community Agency 28	28800 SW 152nd Ave, Miami	33033	8
Lincoln-Marti Community Agency 77	510 N Krome Ave, Homestead	33030	8
Lincoln-Marti Schools 13	137 NW 10th St, Homestead	33030	8
Lincoln-Marti Schools 28	28800 SW 152nd Ave, Miami	33033	8
Lincoln-Marti Schools 88	22121 SW 112th Ave, Miami	33170	6

## TURKEY POINT NUCLEAR POWER PLANT SITE PLAN

FIGURE II-17 continued

<b>PRIVATE SCHOOLS Cont'd</b>			
<i>Facility Name</i>	<i>Address</i>	<i>Zip Code</i>	<i>Area</i>
New Beginnings Preparatory Academy	11558 SW 235th St, Homestead	33032	6
Our Lady of the Holy Rosary	18455 Franjo Rd.	33012	5
Premier Home School & Resource Academy Inc	11285 SW 211th St, Miami	33189	6
Princeton Christian School Elementary	24795 SW 134th Ave, Miami	33032	6
Princeton Christian School Senior	13390 SW 248th St, Miami	33032	6
Sacred Heart School	300 SE 1 Dr., Homestead	33030	8
Saint Johns Episcopal School	145 NE 10 St., Homestead	33030	8
The Thinking Child Academy	155 NW 4th St, Homestead	33030	8
The Thinking Child Learning Center	35 SW 6th Ave, Florida City	33034	8

## TURKEY POINT NUCLEAR POWER PLANT SITE PLAN

**FIGURE II-18**  
**DAYCARE CENTERS, TURKEY POINT 10-MILE EMERGENCY PLANNING ZONE**

<b>DAY CARE CENTERS</b>			
<i>Facility Name</i>	<i>Address</i>	<i>Zip Code</i>	<i>Area</i>
A Plus Tutoring & Educational Services	15260 SW 280TH ST	33033	7
A Shekinah Glory Deliverance	17450 SW 296TH ST	33030	8
A.B.F. Learning Center	13350 SW 288 <sup>th</sup> Street	33033	4
Abby Child Care Centre II, Inc	735 NE 12 <sup>th</sup> Avenue	33030	8
Advantage Academy of Miami, Inc	11575 SW 243 <sup>rd</sup> Street	33032	6
Agape Development Learning Center	22790 SW 112 <sup>th</sup> Avenue	33170	6
Aim High Learning Center I Exp.	1013 N Redland Road	33030	8
Aim High Learning Center II	26201 SW 139 Ave, Homestead	33032	7
Alfonso Family Day Care Home	11322 SW 203 <sup>rd</sup> Terrace	33189	6
Ali Family Day Care Home	13530 SW 267 <sup>th</sup> Street	33032	6
Alonso Family Day Care Home	940 NE 13 <sup>th</sup> Avenue	33033	8
Alvarez Family Day Care Home	12812 SW 218 <sup>th</sup> Terrace	33170	6
American Ju-Jitsu Center	52 SE 4 <sup>th</sup> Road	33030	8
ARC Project Thrive	21300 SW 122 <sup>nd</sup> Avenue	33170	6
ARC Project Thrive #4	756 W Palm Drive	33034	8
ARC Project Thrive #5	40 NW 5 <sup>th</sup> Avenue	33034	8
Arencibia Family Day Care Home	337 NW 5 <sup>th</sup> Avenue	33030	8
Arthur Mays Head Start	11341 SW 216 St	33189	6
Azuka Summer Day Camp	1117 NE 1 <sup>st</sup> Street	33030	8
Barry University	13600 SW 312 <sup>th</sup> Street	33033	4
Batista Family Day Care Home	28541 SW 147 <sup>th</sup> Court	33033	7
<b>Bel Aire Elem (YMCA)</b>	10205 SW 194 St	33157	5
Bertha Abess Center Middle	8601 SW 212th Street	33189	5
Bonilla Family Day Care Home	16241 SW 306 <sup>th</sup> Street	33033	8
Bright Stars Learning Academy	315 W Palm Drive	33034	8
Cabrero Family Day Care	13055 SW 265TH ST	33032	6

## Appendix II

### TURKEY POINT NUCLEAR POWER PLANT SITE PLAN

**FIGURE II-18 continued**

**Day Care Centers (Continued)**

<b>Facility Name</b>	<b>Address</b>	<b>Zip Code</b>	<b>Area</b>
Christian Family Worship Ctr of South Florida, Inc.	27550 Old Dixie Highway	33032	7
Colombo Family Day Care Home	2881 NE 1 <sup>st</sup> Drive	33033	8
Colonial Christian School	17105 SW 296 <sup>th</sup> Street	33030	8
Community Partnership Homeless Inc – South Head Start	28205 SW 125 <sup>th</sup> Ave, Miami	33033	4
Children's Rainbow Day School	22940 Old Dixie Hwy	33170	6
Cool Kids Learn / Goulds Elementary	23555 Sw 112th Ave, Miami-Dade	33032	6
Coral Reef Montessori Academy	10853 Sw 216th St, Miami-Dade	33170	6
Countryside Early Learning Ctr	15395 Sw 288 St, Leisure City	33031	8
Creative Kids Academy, Inc	16325 Sw 288th St, Leisure City	33033	7
Crystal Learning Center	27085 Sw 138th Ct, Miami	33032	7
Cutler Ridge United Methodist	20740 Old Cutler Rd	33189	5
Davis Mildred	704 Sw 12th Ave, Homestead	33030	8
Decoro Large Family Child Care Home	14965 Sw 305th Ter, Homestead	33033	8
Decroly Learning Child Care Center	1541 Se 12th Ave, Homestead	33035	8
Discovery Lane Preschool	230 N Krome Ave, Homestead	33030	8
Dj's Fitness Stations Inc	18804 S Dixie Hwy, Cutler Bay	33157	5
Dunamos Inc	25423 Sw 127th Pl, Miami-Dade	33032	6
(8) Eight Street Day Care Center	1405 NE 8 St, Homestead	33030	8
Family & Children Faith Coalition	10201 Bahia Dr, Cutler Bay	33189	5
Farrington Family Day Care Home	10770 Sw 216th St, Miami	33170	6
Felipe-Santos Family Day Care Home	387 Ne 25th Ter, Homestead	33033	8
Fernandez Family Day Care Home	28714 Sw 147th Pl, Leisure City	33033	7
First Assembly Christian Academy	824 W Palm Dr, FI City	33034	8
First United Methodist Christian School	622-A N Krome Ave, Homestead	33030	8

## Appendix II

### TURKEY POINT NUCLEAR POWER PLANT SITE PLAN

**FIGURE II-18 continued**

**Day Care Centers (Continued)**

<b>Facility Name</b>	<b>Address</b>	<b>Zip Code</b>	<b>Area</b>
Florida City Academy	26049 S Dixie Hwy, Naranja	33032	7
Garcia Large Family Child Care Home	15440 Harding Ln, Leisure City	33033	8
Girl Scout Academic After School Program	364 Nw 6th Ave, Florida City	33034	8
Girl Scout Academic After School	505 Sw 8 St, Homestead	33030	8
Gladiator Wrestling Inc	742 Nw 2nd St, Florida City	33034	8
Gonzalez Family Day Care Home	9520 Caribbean Blvd, Miami	33189	5
Gonzalez Family Day Care Home	19801 Gulfstream Rd, Cutler Bay	33157	5
Gonzalez Family Day Care Home	14362 Sw 294th St, Homestead	33033	8
Gonzalez, Large Family Childcare Home	20021 Sw 117ave	33177	6
Good Shepard Child Care Center	18601SW 97 Ave	33157	5
Goulds Park	11350 SW 216th St, Miami-Dade	33170	6
Great Discoveries Learning Center Inc	15260 SW 280th St, Homestead	33032	7
Greater Love Day Care Inc	1214 NW 9th Ave, Florida City	33034	8
Green, Family Day Care Home	705 SW 3rd Terrace, Florida City	33034	8
Guadalupe Karina Bryant	27060 SW 119th Ct, Miami-Dade	33032	4
Gus Martial Art After School Inc	36 Washington Ave, Homestead	33030	8
Hardcore Boxing & Fitness Inc	418-420 NW 10th Ave, Homestead	33030	8
Harris Family Day Care Home	9540 Montego Bay Dr, Cutler Bay	33189	5
Hernandez Family Day Care Home	19032 SW 99 <sup>th</sup> Avenue	33157	5
Homestead Charter Foundation Inc	2000 SE 28th Ave, Homestead	33035	8
Homestead Christian Academy	255 NE 2nd Dr, Homestead	33030	8
Homestead D L C Ymca	1034 NE 8th St, Homestead	33030	8
Homestead Hospital Child Care	136 NW 12th St, Homestead	33030	8
Homestead Hospital Early Learning Center	975 Baptist Way, Homestead	33030	8

## Appendix II

### TURKEY POINT NUCLEAR POWER PLANT SITE PLAN

**FIGURE II-18 continued**

**Day Care Centers (Continued)**

Facility Name	Address	Zip Code	Area
Hosch Family Day Care Home	1539 Flamingo Ct, Homestead	33035	8
Hughes Family Day Care Home	12354 SW 266th Ter, Naranja	33032	6
Issac Withers Head Start & Child Care Center	21300 SW 12 Ave	33177	6
Jay's Afterschool Enrichment Center	10711 SW 216th St, Miami-Dade	33170	6
Jimenez, Fatima	30101 SW 161st Ave, Miami-Dade	33033	8
Joanne Lee Academy	11340 SW 216 St	33189	6
Kids Learning Center Of South Dade #2	10869 Caribbean Blvd, Cutler Bay	33189	6
Kids R Us li Daycare & Learning Center	370 NE 8th St, Homestead	33030	8
Kids R Us Day Care li	370 NE 8 St, Homestead	33030	8
Kids Terrific	12807 SW 280 <sup>th</sup> Street	33039	4
Kids R Us Day Care Corp	28937 S Dixie Hwy, Homestead	33033	8
Knowledge Builders Of Florida Inc	21911 SW 117th Ave, Miami-Dade	33170	6
Lapworth Large Family Child Care Home	29265 SW 167 Ave, Homestead	33030	8
La Petite Academy #3	21650 SW 98 Ave	33190	5
Le Jardin Community Center, Inc.	320 NW 2 St. Homestead	33030	8
Le Jardin Head Community Ctr, Inc.	107 SW 8 St, Homestead	33030	8
Le Jardin Head Start Program III	177 W Mowry Dr, Homestead	33030	8
Le Jardin Community Center, Inc. 4	230 N Krome Ave, Florida City	33034	8
Leisure City Head Start And Child Care Center	14835 Filmore Lane, Leisure City	33033	8
Leisure Lake Park	29305 Illinois Rd, Miami-Dade	33033	8
Lincoln Marti	22165 SW 112th Ave, Miami	33170	6
Lincoln Marti	15198 SW 288th St, Homestead	33033	8
Lincoln Marti	15270 SW 288th St, Homestead	33030	8

## Appendix II

### TURKEY POINT NUCLEAR POWER PLANT SITE PLAN

**FIGURE II-18 continued**

**Day Care Centers (Continued)**

<b>Facility Name</b>	<b>Address</b>	<b>Zip Code</b>	<b>Area</b>
Lincoln Marti	29025 SW 152nd Ave, Homestead	33030	8
Lincoln Marti	29015 SW 152nd Ave, Homestead	33030	8
Lincoln Marti Com. Ag. Inc./Bershire A/C	28800 SW 152nd Ave, Miami-Dade	33033	8
Little Kingdom Child Care Center li Inc	1000 N Krome Ave, Homestead	33030	8
Little Kingdom Child Care Ct	700 NW 10 Av, Homestead	33030	8
Little Red School House of Homestead	159 NE 9 St, Homestead	33030	8
Little Star Day Care	30384 Old Dixie Hwy, Homestead	33033	8
Lopez Family Day Care Home	14810 SW 288th St, Leisure City	33033	8
Lovely Stars Child Care	24951-57 SW 135th Rd, Miami	33032	6
Machado Large Family Child Care Home	25430 SW 126th Ct, Homestead	33032	
Madeline Montessori School	18443 S Dixie Hwy, Miami	33157	
Mansour Family Day Care Home	20700 Gulfstream Rd, Miami	33189	
Many Faces Academy	12807 SW 280th St, Naranja	33032	
Lullaby Learning Center Inc	301 S Homestead Blvd, Homestead	33030	8
Mays Large Family Child Care Home	12412 SW 251st Ter, Homestead	33032	6
Mdcps / Air Base Elem	12829 SW 272nd St, Miami-Dade	33032	4
Mdcps / Avocado Elementary	16969 SW 294th St, Miami, Dade	33030	8
Mdcps / Bel-Aire Elem(Vpk)	10205 SW 194th St, Cutler Bay	33157	5
Mdcps / Campbell Drive Elem(Vpk)	15790 SW 307th St, Miami-Dade	33033	8
Mdcps / Caribbean Elementary	11990 SW 200th St, Miami-Dade	33177	6
Mdcps / Coconut Palm Elem Vpk	24400 SW 124th Ave, Miami-Dade	33032	6
Mdcps / Cutler Ridge Elem	20210 Coral Sea Rd, Cutler Bay	33189	5
Mdcps / Florida City Elementary(Vpk)	364 NW 6th Ave, Florida City	33034	8
Mdcps / Gateway Enviromental K-8 A/S	955 SE 18th St, Homestead	33035	8



## Appendix II

### TURKEY POINT NUCLEAR POWER PLANT SITE PLAN

**FIGURE II-18 continued**

**Day Care Centers (Continued)**

<b>Facility Name</b>	<b>Address</b>	<b>Zip Code</b>	<b>Area</b>
Mdcps / Gulfstream Elementary	20900 SW 97th Ave, Cutler Bay	33189	5
Mdcps / Irving & Beatrice Pescoe El(Vpk)	29035 SW 144th Ave, Miami-Dade	33033	8
Mdcps / Laura C. Saunders Elem(Vpk)	505 SW 8th St, Homestead	33030	8
Mdcps / Leisure City K-8 Center	14950 SW 288th St, Miami-Dade	33033	8
Mdcps / Mandarin Lakes K8	12225 SW 280th St, Miami-Dade	33032	4
Mdcps / Migrant Education Program	29355 S Dixie Hwy, Miami-Dade	33033	8
Mdcps / Naranja Elementary(Vpk)	13990 SW 264th St, Miami-Dade	33032	7
Mdcps / Pine Villa/Mays Middle	21799 SW 117th Ct, Miami-Dade	33170	6
Mdcps / Redondo Elem	18480 SW 304th St, Homestead	33030	8
Mdcps / South Dade Skills Center	28300 SW 152nd Ave, Miami-Dade	33033	7
Mdcps / Whispering Pines Elem	18929 SW 89th Rd, Cutler Bay	33157	5
Mdcps / William Chapman Elem(Vpk)	27190 SW 140th Ave, Miami-Dade	33032	7
Miami Community Charter School	101 S Redland Rd, Florida City	33034	8
Mitchell Large Family Child Care Home	1421 NW 5th Ave, Florida City	33034	8
Modello Head Start and Child Care Center	15350 SW 282ndSt. Homestead	33033	7
Modello Park	28450 SW 152nd Ave, Miami-Dade	33033	7
My Little Angels Day Care Center	28724 S Dixie Hwy, Homestead	33033	7
My Little Angels Day Care Center	280 S Krome Ave, Homestead	33030	8
My Little Angels Inc li	29400 Old Dixie Hwy, Homestead	33033	8
Naranja Park	13955 SW 264th St, Miami-Dade	33032	7
Naranja Prep Academy	150 N Homestead Blvd, Homestead	33030	8
Naranja Prep Academy Annex	310 NE 2nd Dr, Homestead	33030	8

## Appendix II

### TURKEY POINT NUCLEAR POWER PLANT SITE PLAN

**FIGURE II-18 continued**

**Day Care Centers (Continued)**

<b>Facility Name</b>	<b>Address</b>	<b>Zip Code</b>	<b>Area</b>
Neal Large Family Child Care Home	22320 SW 113th Ct, Miami	33170	6
Old Cutler Academy Learning Center	20200 Old Cutler Rd	33189	5
Our Little Hands Of Love Inc	489 W Lucy St, Florida City	33034	8
Paz Family Day Care Home	20650 SW 124th Pl, Miami	33177	6
Pena Large Family Child Care Home	13220 SW 279th Ter, Homestead	33032	4
Perez Family Day Care Home	21970 SW 98th Ave, Cutler Bay	33190	5
Pino Family Day Care Home	30034 SW 154th Ct, Homestead	33033	8
Piorno Family Day Care Home	29547 SW 144 <sup>th</sup> Avenue, Homestead	33033	8
Piorno-Suarez Large Family Child Care Home	10301 SW 199 St	33157	5
Play & Learn Child Care Center	25001 SW 127th Ave, Princeton	33032	6
Play & Learn Child Care Center #2	26545 S Dixie Hwy, Homestead	33032	7
Precious Kids Daycare Center	11373 SW 211th St, Miami	33189	6
Precious Moments Learning Center I	580 Davis Pkwy, Florida City	33034	8
Premier Home School & Resource Academy	27501 S Dixie Hwy, Miami-Dade	33032	7
Princeton Christian School	24795 SW 134th Ave, Princeton	33092	6
Pro-Kids Learning Center Corp	2050 NE 8th St, Homestead	33033	8
Randolph Family Day Care Home	26214 SW 126th Ct, Homestead	33032	6
Rcma Learning Center School Age Program	13424 SW 314th St, Homestead	33033	4
Rcma Redlands Child Development Center	16085 SW 293rd Dr, Homestead	33033	8
Rcma South Dade Child Development Center	13600 SW 312th St, Homestead	33033	4
Redlands Christian Migrant Association Centro Villas	35501 SW 187th Ave, Florida City	33034	8

## Appendix II

### TURKEY POINT NUCLEAR POWER PLANT SITE PLAN

FIGURE II-18 continued

#### Day Care Centers (Continued)

Facility Name	Address	Zip Code	Area
Rodriguez Family Day Care Home	21513 SW 90 Ct.	33189	5
Rodriguez Family Day Care Home	12320 SW 217th St, Miami	33170	6
Rodriguez Family Day Care Home	11816 SW 210th Ter, Miami	33177	6
Rodriguez Large Family Child Care Home	10330 Puerto Rico Dr, Cutler Bay	33189	5
Rodriguez Large Family Child Care Home	25324 SW 128th Pl, Homestead	33032	6
Rodriguez Large Family Child Care Home	11828 SW 210th Ter, Miami	33177	6
Rodriguez Large Family Child Care Home	15975 SW 304th Ter, Homestead	33033	8
Ruiz Large Family Child Care Home	11561 SW 201st St, Miami	33189	6
Rv Little Giant Day Care Center	27020 S Dixie Hwy, Naranja	33032	7
Sacred Heart Catholic School	300 SE 1st Dr, Homestead	33030	8
Sanuces Self Defense Inc.	27571 S Dixie Hwy, Miami-Dade	33032	7
Small Fry Educational Day Care Center	19350 Belview Dr	33157	5
Small Hands Preschool	21334 SW 112th Ave, Miami	33189	6
Small Wonders Of Miami	14118 SW 288 St, Homestead	33033	7
Small Wonders Of Miami #3	29501 SW 152nd Ave, Leisure City	33033	8
Small Wonders Of Miami Annex	14102 SW 288th St, Homestead	33033	8
Small Wonders Of Miami li	10725 SW 216th St, Miami	33170	6
Small Wonders South Inc	119 S Redland Rd, Florida City	33034	8
Smart Kids/After School Care Network Inc	10711 SW 216th St, Miami-Dade	33170	6
Smart Start At City Church	47 NW 16th St, Homestead	33030	8
<b>S Dade Child Care Center</b>	28520 SW 148 Ave	33033	7
Smith Family Day Care Home	27903 SW 131st Ave, Homestead	33032	4

## Appendix II

### TURKEY POINT NUCLEAR POWER PLANT SITE PLAN

**FIGURE II-18 continued**

**Day Care Centers (Continued)**

<b>Facility Name</b>	<b>Address</b>	<b>Zip Code</b>	<b>Area</b>
Smith Family Day Care Home	20123 SW 118th Ct, Miami	33177	6
Somerset Academy Inc	300 SE 1st Dr, Homestead	33030	8
Sosa Family Day Care Home	20022 SW 118th Ave, Miami	33177	6
Sotolongo Family Day Care Home	12651 SW 208th St, Miami	33177	6
South Dade Park	28151 SW 164th Ave, Miami-Dade	33033	7
Spirit Ministry Inc.	10711 SW 216th St, Miami-Dade	33170	6
St. John's Episcopal Church And School	145 NE 10th St, Homestead	33030	8
Stevens Family Day Care Home	28363 SW 140th Pl, Homestead	33033	7
Steve's Academy	28901 SW 137th Ave, Miami	33033	4
Su's Creative Corner Preschool #2 Inc	28834 S Dixie Hwy, Homestead	33033	8
Su's Creative Corner Preschool Inc	310 E Mowry Dr, Homestead	33030	8
Sunrise to Midnight Childcare #2	20200 SW 88 <sup>th</sup> Ct., Miami	33189	5
Swain Family Day Care Home	22705 SW 113 Ct, Miami	33170	6
The Afterschool Hangout Inc	7735 SW 188th St, Cutler Bay	33157	5
The Charter School At Waterstone	855 E Waterstone Way, Homestead	33033	8
The Children's Gallery And Arts Ctr Inc	51 N Krome Ave, Homestead	33030	8
The Growing House	20257 Old Cutler Rd, Miami	33189	5
The Little School 4 Little People Inc	450 Washington Ave, Homestead	33030	8
The Pumpkin Share # 4	21301 S Dixie Hwy, Miami	33189	6
The 2nd House Day Care & Pre-School # 4	20841 SW 117th Ave, Miami	33177	6
The Thinking Child Academy	155 NW 4th St, Homestead	33030	8
The Thinking Child Learning Center Inc	35 SW 6th Ave, Florida City	33034	8

## Appendix II

### TURKEY POINT NUCLEAR POWER PLANT SITE PLAN

**FIGURE II-18 continued**

**Day Care Centers (Continued)**

<b>Facility Name</b>	<b>Address</b>	<b>Zip Code</b>	<b>Area</b>
The Village Of Early Education	10600 Caribbean Blvd, Cutler Bay	33189	5
Thinking Cap Child Care & Learning	13395 SW 268th St, Miami-Dade	33032	6
Tiny Tykes Learning Center	18 NE 6th St, Homestead	33030	8
Tiny Tykes Preschool Llc	18 NE 6th St, Homestead	33030	8
Titan Athletics Co Llc	3320 NE 13th Cir Dr, Homestead	33033	8
Town Of Cutler Bay	10100 SW 200th St, Cutler Bay	33157	5
Triplett Large Family Child Care Home	13205 SW 278 Te, Homestead	33032	4
United Martial Arts Inc	250 E Palm Dr, Florida City	33034	8
Urrutia Large Family Child Care Home	29447 SW 144th Ave, Homestead	33033	8
Venegas Family Day Care Home	1551 NE 12th St, Homestead	33033	8
Vernique Brown	11960 SW 271st St, Miami-Dade	33032	4
Village Learning Center, Llc	13459 SW 288th St, Homestead	33030	4
Wanda Rabelo	959 NW 3rd Ave, Florida City	33034	8
Washington Family Day Care Home	11833 SW 203rd St, Miami	33177	6
Whigham Elementary Head Start & Child Care Center	21545 SW 87th Ave, Miami	33189	5
Williams Family Day Care Home	13247 SW 262nd St, Homestead	33032	6
Williams Large Family Child Care Home	725 NW 12th St, Florida City	33034	8
Wings For Life South Florida	11000 SW 220th St, Miami	33170	6
Wonderful Paradise Learning Center Corp	29629 S Dixie Hwy, Homestead	33033	8
Worthley Family Day Care Home	16320 SW 278 St	33031	7
Wright Large Family Child Care Home	22360 SW 112 Av	33170	6
YMCA / Bel-Aire Elem	10205 SW 194th St, Cutler Bay	33157	5

## Appendix II

### TURKEY POINT NUCLEAR POWER PLANT SITE PLAN

FIGURE II-18 continued

#### Day Care Centers (Continued)

Facility Name	Address	Zip Code	Area
YMCA / Campbell Drive Elem	15790 SW 307th St, Miami-Dade	33033	8
YMCA / Coconut Palm Elementary A/S	24400 SW 124th Ave, Miami-Dade	33032	6
YMCA / Florida City Elementary A/S	364 NW 6th Ave, Florida City	33034	8
YMCA / Irving & Beatrice Peskoe Elem	29035 SW 144th Ave, Miami-Dade	33033	8
YMCA / Laura Saunders Elem B/A	505 SW 8th St, Homestead	33030	8
YMCA / William Chapman Elementary	27190 SW 140th Ave, Miami-Dade	33032	7
YMCA / Dr. Edward L Whigham Plc	8035 SW 196th St, Cutler Bay	33157	5
YMCA / Pine Villa Elementary	21799 SW 117th Ct, Miami-Dade	33170	6

\*\*\*BOLD=Dade Co. School Affiliation

#### MONROE COUNTY

PRIVATE SCHOOLS			
Facility Name	Address	Zip Code	Area
Academy of Ocean Reef	395 S. Harbor Drive, Key Largo	33037	10

## TURKEY POINT NUCLEAR POWER PLANT SITE PLAN

**FIGURE II-19  
PUBLIC/PRIVATE AIRPORTS AND EMERGENCY HOSPITAL HELISTOPS**

NAME	LOCATION	RUNWAY	LIGHTS
<i>Public</i>			
Dade-Collier Training/Transition	36 miles W. of Miami	10,498' Asph	Yes
Homestead General Aviation	4 miles NW of Homestead	4,000' Asph 3,000' Asph	Yes Yes
Homestead Regional	3 miles E of Homestead	11,200' Asph	No
Kendall-Tamiami Executive	13 miles SW of Miami	5,000' Asph 5,000' Asph 4,000' Asph	Yes Yes Yes
Miami Heliport	1 mile E of Miami	200' x 200'	
Miami International	8 miles NW of Miami	10,502' 13,000' 9,355' 8,600	Yes Yes Yes Yes
Opa Locka	10 miles N of Miami	6,800' 8,002' 4,306' 4,394'	Yes Yes Yes Yes
Watson Island Seaplane Base	2 miles E of Miami	15,000' x 600' Water	
Fort Lauderdale Executive	5 miles N of Fort Lauderdale	6,000' 4,000'	Yes Yes
Fort Lauderdale/Hollywood International	3 miles S of Fort Lauderdale	9,000' 5,276' 6,930	Yes Yes Yes
Key West International	2 miles E of Key West	4,800'	Yes
Marathon	3 miles E of Marathon	5,000'	Yes
North Perry	Hollywood	3,000' 3,050' 3,065'	Yes No No
Pompano Beach Airpark	1 mile NE of Pompano	4,001' 3,502' 4,419'	Yes Yes Yes
<i>Private</i>			
Richard's Field	5 miles NW of Homestead	2,620' Turf	No
Ocean Reef Club	1 mile NE of Key Largo	4,050'	No
Sugar Loaf Airport + Seaplane Base	11 miles NE of Key West	2,700'	No
Summerland Key Cove	Summerland Key	2,394'	No



## TURKEY POINT NUCLEAR POWER PLANT SITE PLAN

FIGURE II-19 continued

<b>PRIVATE SEAPLANE BASES</b>		
Biscayne Seaplane Base	6 miles NE of Miami	120' Turf
Chalk's Key West	4 miles N of Key West	
Flying Bonefish	4 miles NE of Marathon	5,000' Water
		5,000' Water
Inter Island SPB	3 miles NE of Key West	3800' Water
Plantation Key	2 miles E of Marathon	6,600' Water
Southernmost	Key West	6,000' Water
		5,000' Water

<b>HOSPITAL HELICOPTER HELISTOPS</b>		
<i>Hospital</i>	<i>Location</i>	<i>Landing Area</i>
Baptist Hospital	10 miles SW of Miami	40' Asphalt
Jackson Memorial	2 miles NW of Miami	51' Concrete
Miami Children's Hospital	Miami	40' Concrete
Mount Sinai Medical Center	Miami Beach	100' Asphalt
Palmetto General	3 miles NW of Hialeah	52' Concrete
Fisherman's Hospital	2 mile E of Marathon	100' Asphalt
Mariner's Hospital	3 Miles SW of Tavenier	50' Concrete
Broward General Med Ctr	Ft. Lauderdale	50' Asphalt

## **Supplemental Information 8**

Withheld under 10 CFR 2.390 as "Sensitive-Federal, State, Foreign Government and International Agency Controlled." (See COLA Part 9)

### **Turkey Point Response Plan Miami-Dade County, Florida**

**(PUBLIC VERSION - REDACTED)**