

ACCELERATED DISTRIBUTION DEMONSTRATION SYSTEM

REGULATORY INFORMATION DISTRIBUTION SYSTEM (RIDS)

ACCESSION NBR: 9010120096 DOC. DATE: 90/09/27 NOTARIZED: NO DOCKET #
 FACIL: 50-250 Turkey Point Plant, Unit 3, Florida Power and Light C 05000250
 50-251 Turkey Point Plant, Unit 4, Florida Power and Light C 05000251

AUTH. NAME AUTHOR AFFILIATION
 HARRIS, K.N. Florida Power & Light Co.
 RECIP. NAME RECIPIENT AFFILIATION
 Document Control Branch (Document Control Desk)

SUBJECT: Forwards 6-month integrated schedule regulatory rept for facilities for Aug 1990.

DISTRIBUTION CODE: A001D COPIES RECEIVED: LTR 1 ENCL 1 SIZE: 19
 TITLE: OR Submittal: General Distribution

NOTES:

| | RECIPIENT | | COPIES | | | RECIPIENT | | COPIES | |
|-----------|-----------------|--|--------|------|--|-----------------|--|--------|------|
| | ID CODE/NAME | | LTTR | ENCL | | ID CODE/NAME | | LTTR | ENCL |
| | PD2-2 LA | | 1 | 1 | | PD2-2 PD | | 1 | 1 |
| | EDISON, G | | 2 | 2 | | | | | |
| INTERNAL: | NRR/DET/ECMB 9H | | 1 | 1 | | NRR/DOEA/OTSB11 | | 1 | 1 |
| | NRR/DST 8E2 | | 1 | 1 | | NRR/DST/SELB 8D | | 1 | 1 |
| | NRR/DST/SICB 7E | | 1 | 1 | | NRR/DST/SRXB 8E | | 1 | 1 |
| | NUDOCS-ABSTRACT | | 1 | 1 | | OC/LEMB | | 1 | 0 |
| | OGC/HDS2 | | 1 | 0 | | REG FILE 01 | | 1 | 1 |
| | RES/DSIR/EIB | | 1 | 1 | | | | | |
| EXTERNAL: | NRC PDR | | 1 | 1 | | NSIC | | 1 | 1 |

NOTE TO ALL "RIDS" RECIPIENTS:

PLEASE HELP US TO REDUCE WASTE! CONTACT THE DOCUMENT CONTROL DESK, ROOM P1-37 (EXT. 20079) TO ELIMINATE YOUR NAME FROM DISTRIBUTION LISTS FOR DOCUMENTS YOU DON'T NEED!

TOTAL NUMBER OF COPIES REQUIRED: LTTR 17 ENCL 15

m x 4 w/b



SEP 27 1990

L-90-345

U. S. Nuclear Regulatory Commission
Attn: Document Control Desk
Washington, D. C. 20555


Gentlemen:

Re: Turkey Point Units 3 and 4
Docket Nos. 50-250 and 50-251
Integrated Schedule Regulatory Report

Attached is the August 1990 Six Month Integrated Schedule (I/S) Regulatory Report for the Turkey Point Plant. The schedules discussed in this report reflect information updated since the January 1990 Regulatory Report which was provided to the NRC on March 28, 1990 (L-90-114). Changes of interest to the NRC discussed in this report have been reviewed with the NRC Project Manager for the Turkey Point Plant in accordance with the Integrated Schedule Plan.

Should there be any questions regarding this report, please contact us.

Very truly yours,


K. N. Harris
Vice President
Turkey Point Nuclear

KNH/JEK/jk

Attachment

cc: Stewart D. Ebnetter, Regional Administrator, Region II, USNRC
Senior Resident Inspector, USNRC, Turkey Point Plant

A001
111

SEP 24 1966

ATTACHMENT I

The following is a summary of the I/S modifications for the Six Month Integrated Schedule Regulatory Report.

The August 1990 Integrated Schedule is based on the following outages:

| <u>OUTAGE DESCRIPTION</u> | <u>START</u> | <u>FINISH</u> |
|---------------------------|--------------|---------------|
| Unit 3 Diesel Tie-in | 12/09/90 | 10/06/91 |
| Unit 3 Cycle 13 Refueling | 08/21/92 | 12/04/92 |
| Unit 3 Cycle 14 Refueling | 04/01/94 | 06/03/94 |
| Unit 4 Cycle 13 Refueling | 11/15/90 | 10/27/91 |
| Unit 4 Cycle 14 Refueling | 04/01/93 | 06/03/93 |
| Unit 4 Cycle 15 Refueling | 10/01/94 | 12/03/94 |

Changes to the Integrated Schedule since the last issue to the NRC, January 1990 (L-90-114 dated March 28, 1990) are as follows:

MODIFICATIONS ADDED

| <u>I/S #</u> | <u>DESCRIPTION</u> | <u>LIC CAT</u> |
|--------------|--------------------------------------|----------------|
| 396 | 5 BOUNDARIES FOR VISUAL LEAK INSP | FPL |
| 768 | C WASTE GAS SYS UPGRADE PROGRAM | FPL |
| 965 | S HFE REVW ON PCM'S IMPLMNTD > 9/85 | FPL |
| 973 | C IE 86-87 LOSS OF OFFSITE POUER | FPL |
| 1327 | 3 GL 88-17/MODS DUE TO LOSS OF RHR | NRR |
| 1328 | 4 GL 88-17/MODS DUE TO LOSS OF RHR | NRR |
| 1351 | 3 ADD PHASE A ISO SIGNAL RCS SAMPLES | NRR |
| 1352 | 4 ADD PHASE A ISO SIGNAL RCS SAMPLES | NRR |
| 1356 | 4 UPSTREAM CHECK VALVE FOR 874 A&B | FPL |
| 1357 | C PLT PERIMETER FLOODWALL REPL | FPL |
| 1358 | C CCW PIPE TRENCH FLOODWALLS | FPL |
| 1359 | C FLOOD PROTECTION 4.16 KV SWGR RMS | I&E |
| 1360 | C STORM STUDY/PLT DRAINAGE EVAL | FPL |

MODIFICATIONS CANCELLED

| <u>I/S #</u> | <u>DESCRIPTION</u> | <u>LIC CAT</u> |
|--------------|-------------------------------------|----------------|
| 86 | 3 480V LOAD CENTER COOLING FACILITY | FPL |
| 146 | C COLD LAB CHEM EQUIPMENT | FPL |
| 290 | 3 BACKUP INSTR. AIR COMPRESSOR | FPL |
| 361 | 4 REPL STM FLOW XMTR PROCESS TUBE | FPL |
| 382 | 3 ELECTRIC GEN RADIO FREQ MONITOR | FPL |
| 410 | 3 INSP TURB PLT NSR PIPE SUPP | FPL |
| 411 | 3 INSP TURB PLT NSR PIPE SUPP | FPL |
| 478 | 3 INST FLGS ON RCP SEAL LINES | FPL |

MODIFICATIONS CANCELLED (con't.)

| <u>I/S #</u> | <u>DESCRIPTION</u> | <u>LIC CAT</u> |
|--------------|-------------------------------------|--------------------|
| 869 | 4 RELOCATE FM-113 MAG FLOW CONVERTR | FPL |
| 1003 | 3 DEL LEAD/LAG MODLE/LOW PRZR LOOPS | FPL |
| 1004 | 4 DEL LEAD/LAG MODLE/LOW PRZR LOOPS | FPL |
| 1067 | C RCP VIBRATION SYSTEM | FPL |
| 1157 | 3 SESR 86-067 ROSEMOUNT RTD'S | FPL |
| 1213 | C LIVE LOADING OF VALVE PACKING | FPL |
| 1234 | 3 CONDENSATE POL ROTARY PNEU ACTRS | FPL |
| 1247 | 4 CONDENSATE POL ROTARY PNEU ACTRS | FPL |
| 1279 | 3 CCW HT EXCHANGER TUBE REPLACEMENT | FPL |
| 1282 | 4 TURBINE LUBE OIL FILTERS ADDIT'N | FPL |
| 1291 | C CONTROL ROOM RELABELING | NRR |
| 1292 | S CTRL RM DEMARCATION DOCUMENTATION | NRR |
| 1307 | C REMOVAL OF AUX STM SUPPLY TO AFW | FPL |

MODIFICATIONS COMPLETED

| <u>I/S #</u> | <u>DESCRIPTION</u> | <u>LIC CAT</u> |
|--------------|--------------------------------------|--------------------|
| 120 | 3 ENHANCED RCP OIL COLL SYS | FPL |
| 215 | 3 ADD & RELOCATE AFW N2 SUPPLY | FPL |
| 250 | 3 AFW FLOW TRANSMITTER REPLACEMENT | FPL |
| 404 | S ACCEPTABILITY OF DC EQUIP RATINGS | FPL |
| 419 | 3 REPL VELAN CK VLV DISC | FPL |
| 420 | 4 REPLACE VELAN CHECK VALVE DISK | FPL |
| 519 | 3 RHR - INSTL UPGRADED 8" GLOBE VLV | FPL |
| 557 | 3 GENERATOR H2 MONITORING SYSTEM | ORA |
| 564 | 4 ISO SV-20-0PC TURBINE PROT'N SYS | FPL |
| 577 | 4 G.E. PK-2 TEST BLOCKS | FPL |
| 610 | C EDG START AIR SYS/QUAL IMPROVMNT | FPL |
| 620 | S REVIEW VALVES SOER 81-83 | FPL |
| 662 | 3 MAIN FEED CV 2011 CLOSING TIME | FPL |
| 674 | 3 PERM SFP LEVEL MEASURING SCALE | FPL |
| 778 | 4 TURB LUBE OIL BOWSER LVL CNTRL | FPL |
| 850 | S DE-ENERGIZE 4160V SFTY REL BUSSES | FPL |
| 958 | 3 PROTECT'V GUARD FOR MG-6 SAFEGRDS | I&E |
| 965 | S HFE REVW ON PCMS IMPLMNTD GT 9/85 | FPL |
| 1042 | 3 P&ID QC WKDWN (ARM PRM NCC) I/CTMT | CFO |
| 1053 | S METEOROLOGICAL SYSTEMS EVALUATION | FPL |
| 1132 | 4 PERM SFP LEVEL MEASURING SCALE | FPL |
| 1206 | 3 SI PMP MINI-RECIRC VLV KEYLOCK SW | FPL |
| 1239 | 3 PRMS BYPASS SW'S CABNT GRD & ALRM | FPL |
| 1245 | 3 TURB RUNBACK SELECTOR SWITCH REPL | NRR |
| 1269 | 3 CARD READER ON PERS/EQPT HATCHES | I&E |
| 1273 | 3 STM GENERATOR J NOZZLE REPLACEMNT | FPL |
| 1278 | S REPLACE Q LIST WITH TEDB | FPL |
| 1284 | 3 TPCW HX ISOLTN - CV2201 FAIL CLSE | FPL |
| 1304 | S SINGLE FAILURES IN AFW SYSTEM | FPL |
| 1350 | 3 SI ACCUM LVL TRANSMITTER PLATFORM | FPL |

MODIFICATIONS WITH REVISED COMMITMENT CATEGORY

| <u>I/S #</u> | <u>DESCRIPTION</u> | <u>LIC CAT</u> |
|--------------|--------------------------------------|--------------------|
| 519 | 3 RHR-INSTL UPGRADED 8" GLOBE VLV | FPL |
| 1087 | S IEN 87-2 SWISMIC QUAL-DIAPHR VLVS | I&E |
| 1359 | C FLOOD PROTECTION 4.16 KV SWTCH RMS | FPL |
| 1360 | S STORM STUDY/PLANT DRAINAGE EVAL | FPL |

| PROJECT | ALMEGA99 | TURKEY POINT NUCLEAR PLANT | MODE | TARGET SCHEDULE | 30 | RUN | 13SEP90 | 14:11 |
|-----------|------------------------------------|---|--------------|-----------------|---------|--------------------|---------|-------|
| PIOT | CFO | INTEGRATED SCHEDULE | DIFF | TARG FINISH | 17MAY95 | PROJECT#2 | 8683 | |
| PAGE | 1 | FLORIDA POWER AND LIGHT CO. | INTERVAL | TARG DATA DATE | 29NOV88 | SCHEDULE BAR CHART | | |
| START | 22JAN84 | TARGET SCHEDULE | SHORT BREAKS | BCODES 9 | CUR EF | | | |
| FINISH | 30DEC95 | LINE BREAK ON NRC COMMITMENT CATEGORIES | | | | | | |
| DATA DATE | 21AUG90 | LINE BREAK ON CFO SUB-SYSTEM | | | | | | |
| CFO | POST TMI CONFIRMATORY MODIFICATION | C AREA RADIATION MONIT'G SYST REPL CFO MOD 0341 | 18AUG89 | 1989 | 1990 | 1991 | 1992 | 1993 |
| | P04-T11.20 U4 SEL SYS MODS/REPAIRS | C EDG AIR START MOTORS UPGRADE CFO MOD 0576 | 18JUL86 | | | | | |
| | POST PEP | 4 RHR-INSTL UPGRADED 8" GLOBE VLV CFO MOD 0565 | 5FEB88 | | | | | |

NOTES:

↓ ORIGINAL NRC COMMITMENT DATE

▽ CURRENT NON-OUTAGE NRC COMMITMENT DATE

▽▽ CURRENT OUTAGE NRC COMMITMENT DATE

DATA DATE



| Age Group | 1997 | 2000 | 2003 |
|-----------|------|------|------|
| 18-29 | ~75% | ~80% | ~85% |
| 30-49 | ~65% | ~70% | ~75% |
| 50-69 | ~55% | ~60% | ~65% |
| 70+ | ~45% | ~50% | ~55% |

4

2

1

82

2

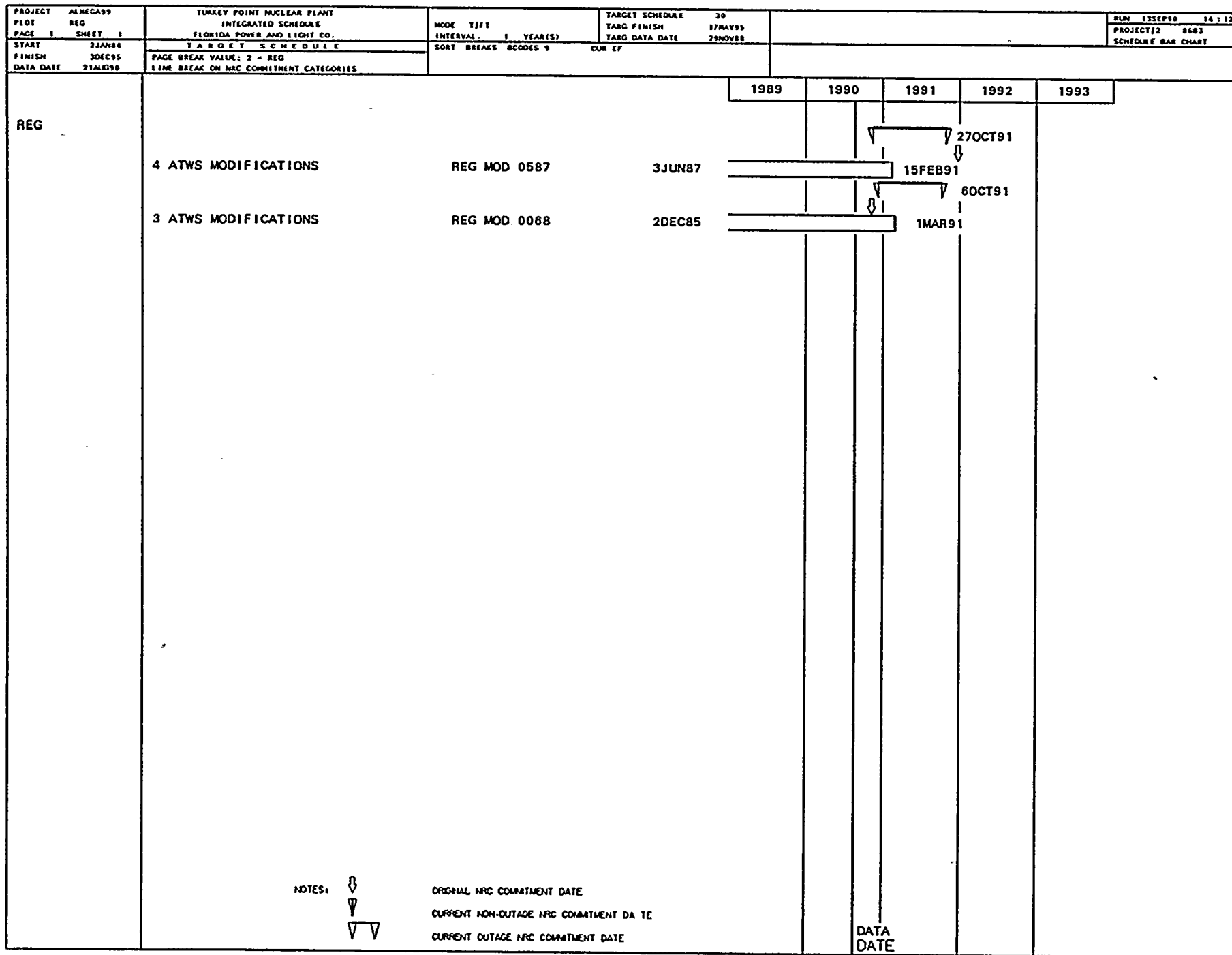
1048 J. H. Garman

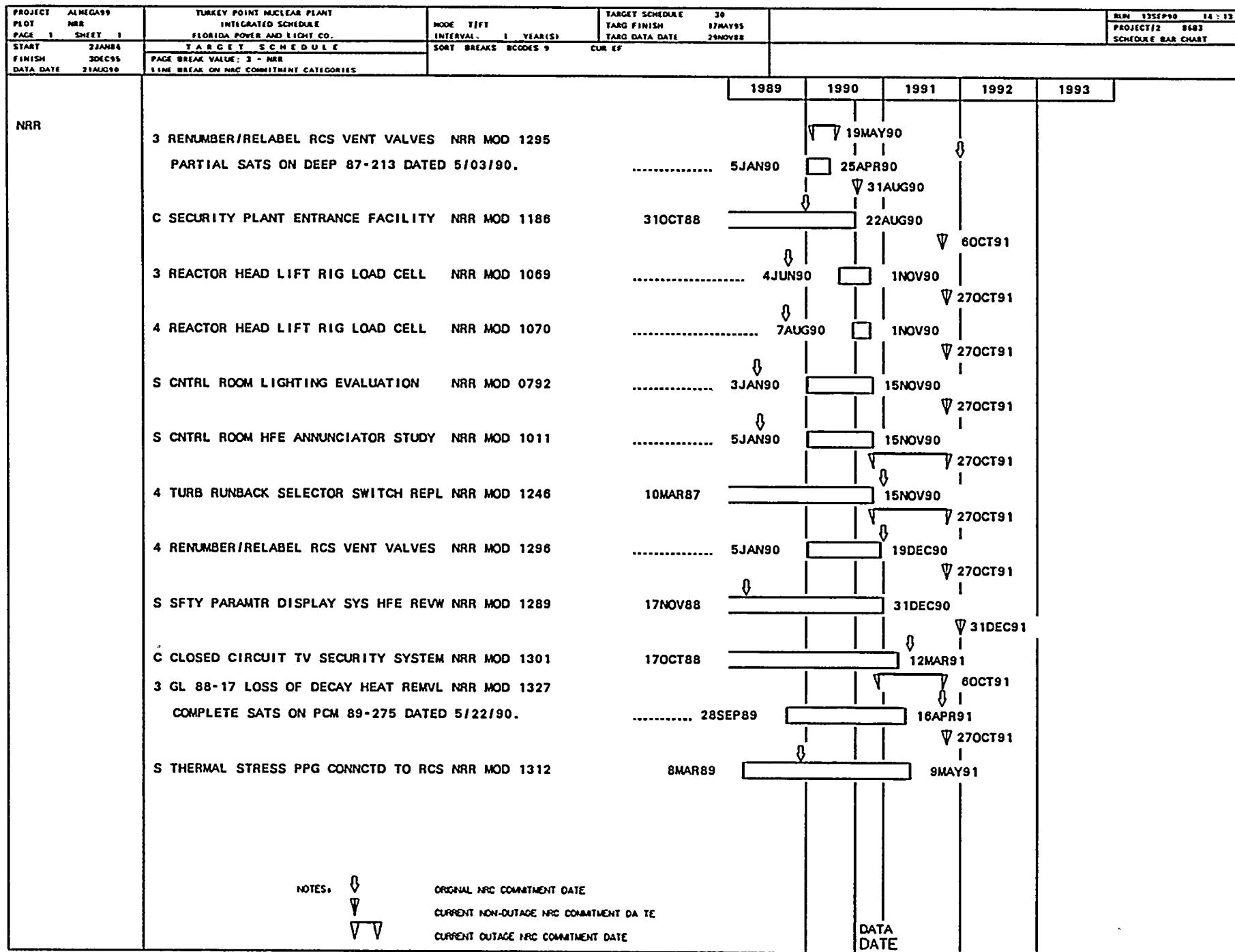
1. 2. 3. 4. 5. 6. 7. 8. 9. 10. 11. 12. 13. 14. 15. 16. 17. 18. 19. 20. 21. 22. 23. 24. 25. 26. 27. 28. 29. 30. 31. 32. 33. 34. 35. 36. 37. 38. 39. 40. 41. 42. 43. 44. 45. 46. 47. 48. 49. 50. 51. 52. 53. 54. 55. 56. 57. 58. 59. 60. 61. 62. 63. 64. 65. 66. 67. 68. 69. 70. 71. 72. 73. 74. 75. 76. 77. 78. 79. 80. 81. 82. 83. 84. 85. 86. 87. 88. 89. 90. 91. 92. 93. 94. 95. 96. 97. 98. 99. 100. 101. 102. 103. 104. 105. 106. 107. 108. 109. 110. 111. 112. 113. 114. 115. 116. 117. 118. 119. 120. 121. 122. 123. 124. 125. 126. 127. 128. 129. 130. 131. 132. 133. 134. 135. 136. 137. 138. 139. 140. 141. 142. 143. 144. 145. 146. 147. 148. 149. 150. 151. 152. 153. 154. 155. 156. 157. 158. 159. 160. 161. 162. 163. 164. 165. 166. 167. 168. 169. 170. 171. 172. 173. 174. 175. 176. 177. 178. 179. 180. 181. 182. 183. 184. 185. 186. 187. 188. 189. 190. 191. 192. 193. 194. 195. 196. 197. 198. 199. 200. 201. 202. 203. 204. 205. 206. 207. 208. 209. 210. 211. 212. 213. 214. 215. 216. 217. 218. 219. 220. 221. 222. 223. 224. 225. 226. 227. 228. 229. 230. 231. 232. 233. 234. 235. 236. 237. 238. 239. 240. 241. 242. 243. 244. 245. 246. 247. 248. 249. 250. 251. 252. 253. 254. 255. 256. 257. 258. 259. 260. 261. 262. 263. 264. 265. 266. 267. 268. 269. 270. 271. 272. 273. 274. 275. 276. 277. 278. 279. 280. 281. 282. 283. 284. 285. 286. 287. 288. 289. 290. 291. 292. 293. 294. 295. 296. 297. 298. 299. 300. 301. 302. 303. 304. 305. 306. 307. 308. 309. 310. 311. 312. 313. 314. 315. 316. 317. 318. 319. 320. 321. 322. 323. 324. 325. 326. 327. 328. 329. 330. 331. 332. 333. 334. 335. 336. 337. 338. 339. 340. 341. 342. 343. 344. 345. 346. 347. 348. 349. 350. 351. 352. 353. 354. 355. 356. 357. 358. 359. 360. 361. 362. 363. 364. 365. 366. 367. 368. 369. 370. 371. 372. 373. 374. 375. 376. 377. 378. 379. 380. 381. 382. 383. 384. 385. 386. 387. 388. 389. 390. 391. 392. 393. 394. 395. 396. 397. 398. 399. 400. 401. 402. 403. 404. 405. 406. 407. 408. 409. 410. 411. 412. 413. 414. 415. 416. 417. 418. 419. 420. 421. 422. 423. 424. 425. 426. 427. 428. 429. 430. 431. 432. 433. 434. 435. 436. 437. 438. 439. 440. 441. 442. 443. 444. 445. 446. 447. 448. 449. 450. 451. 452. 453. 454. 455. 456. 457. 458. 459. 460. 461. 462. 463. 464. 465. 466. 467. 468. 469. 470. 471. 472. 473. 474. 475. 476. 477. 478. 479. 480. 481. 482. 483. 484. 485. 486. 487. 488. 489. 490. 491. 492. 493. 494. 495. 496. 497. 498. 499. 500. 501. 502. 503. 504. 505. 506. 507. 508. 509. 510. 511. 512. 513. 514. 515. 516. 517. 518. 519. 520. 521. 522. 523. 524. 525. 526. 527. 528. 529. 530. 531. 532. 533. 534. 535. 536. 537. 538. 539. 540. 541. 542. 543. 544. 545. 546. 547. 548. 549. 550. 551. 552. 553. 554. 555. 556. 557. 558. 559. 560. 561. 562. 563. 564. 565. 566. 567. 568. 569. 570. 571. 572. 573. 574. 575. 576. 577. 578. 579. 580. 581. 582. 583. 584. 585. 586. 587. 588. 589. 590. 591. 592. 593. 594. 595. 596. 597. 598. 599. 600. 601. 602. 603. 604. 605. 606. 607. 608. 609. 610. 611. 612. 613. 614. 615. 616. 617. 618. 619. 620. 621. 622. 623. 624. 625. 626. 627. 628. 629. 630. 631. 632. 633. 634. 635. 636. 637. 638. 639. 640. 641. 642. 643. 644. 645. 646. 647. 648. 649. 650. 651. 652. 653. 654. 655. 656. 657. 658. 659. 660. 661. 662. 663. 664. 665. 666. 667. 668. 669. 670. 671. 672. 673. 674. 675. 676. 677. 678. 679. 680. 681. 682. 683. 684. 685. 686. 687. 688. 689. 690. 691. 692. 693. 694. 695. 696. 697. 698. 699. 700. 701. 702. 703. 704. 705. 706. 707. 708. 709. 710. 711. 712. 713. 714. 715. 716. 717. 718. 719. 720. 721. 722. 723. 724. 725. 726. 727. 728. 729. 730. 731. 732. 733. 734. 735. 736. 737. 738. 739. 740. 741. 742. 743. 744. 745. 746. 747. 748. 749. 750. 751. 752. 753. 754. 755. 756. 757. 758. 759. 760. 761. 762. 763. 764. 765. 766. 767. 768. 769. 770. 771. 772. 773. 774. 775. 776. 777. 778. 779. 780. 781. 782. 783. 784. 785. 786. 787. 788. 789. 790. 791. 792. 793. 794. 795. 796. 797. 798. 799. 800. 801. 802. 803. 804. 805. 806. 807. 808. 809. 810. 811. 812. 813. 814. 815. 816. 817. 818. 819. 820. 821. 822. 823. 824. 825. 826. 827. 828. 829. 830. 831. 832. 833. 834. 835. 836. 837. 838. 839. 840. 84

2 1 4

3

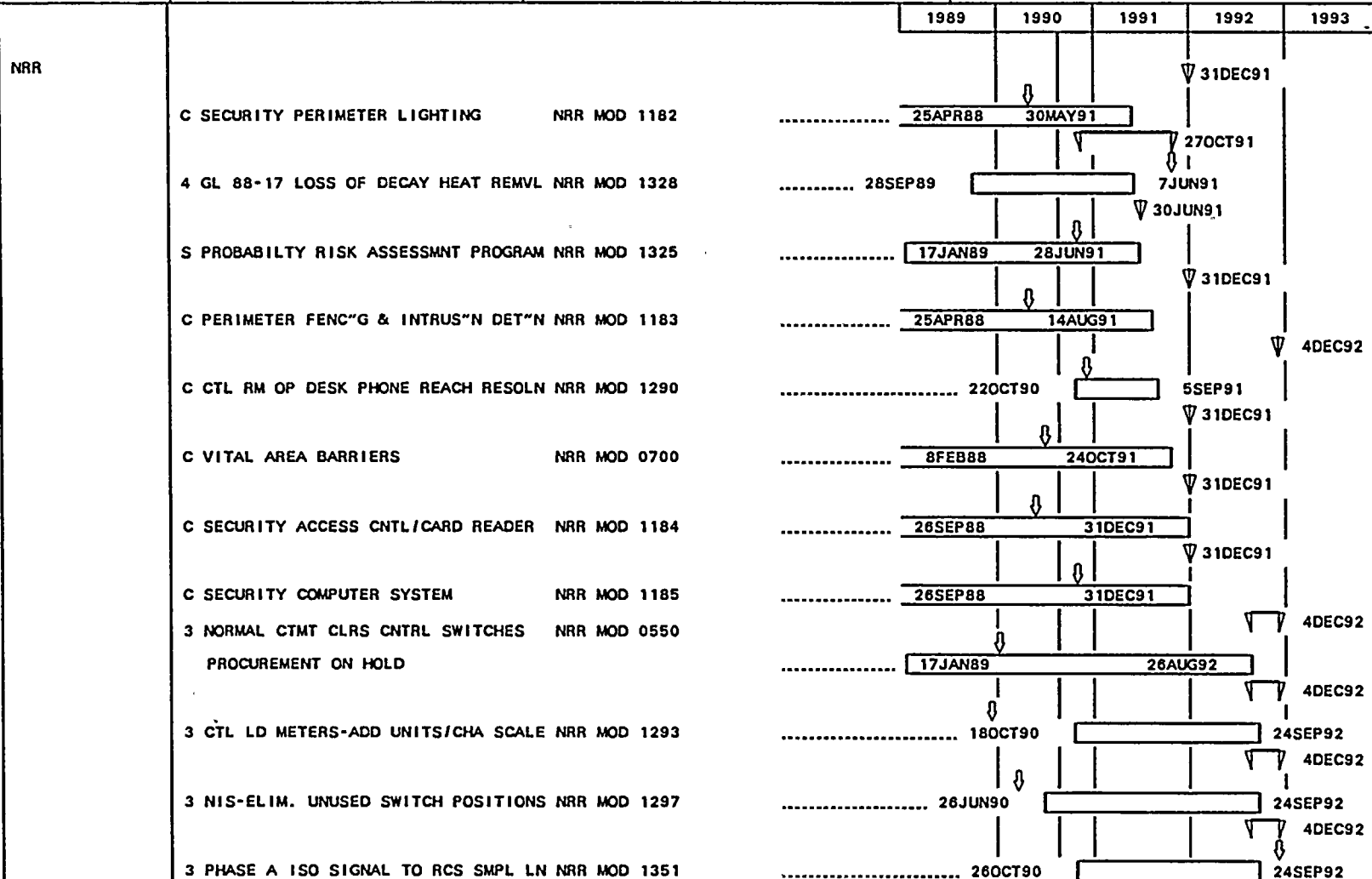
11







| | | | | | | |
|------------------------------|-------------------------------|---|----------------------------------|--|--------------------------|---|
| PROJECT PLOT PAGE 1 | ALMEGA99 NRR SHEET 2 | TURKEY POINT NUCLEAR PLANT INTEGRATED SCHEDULE FLORIDA POWER AND LIGHT CO. | MODE T/FT INTERVAL: 1 YEAR(S) | TARGET SCHEDULE TARG FINISH TARG DATA DATE | 30 17MAY95 25NOV88 | BLN 13SEP90 14:13 PROJECT/2 8683 SCHEDULE BAR CHART |
| START FINISH DATA DATE | 22JAN84 30DEC95 21AUG90 | TARGET SCHEDULE PAGE BREAK VALUE: 3 - NRR LINE BREAK ON NRC COMMITMENT CATEGORIES | SORT BREAKS BCODES 9 | CUR EF | | |

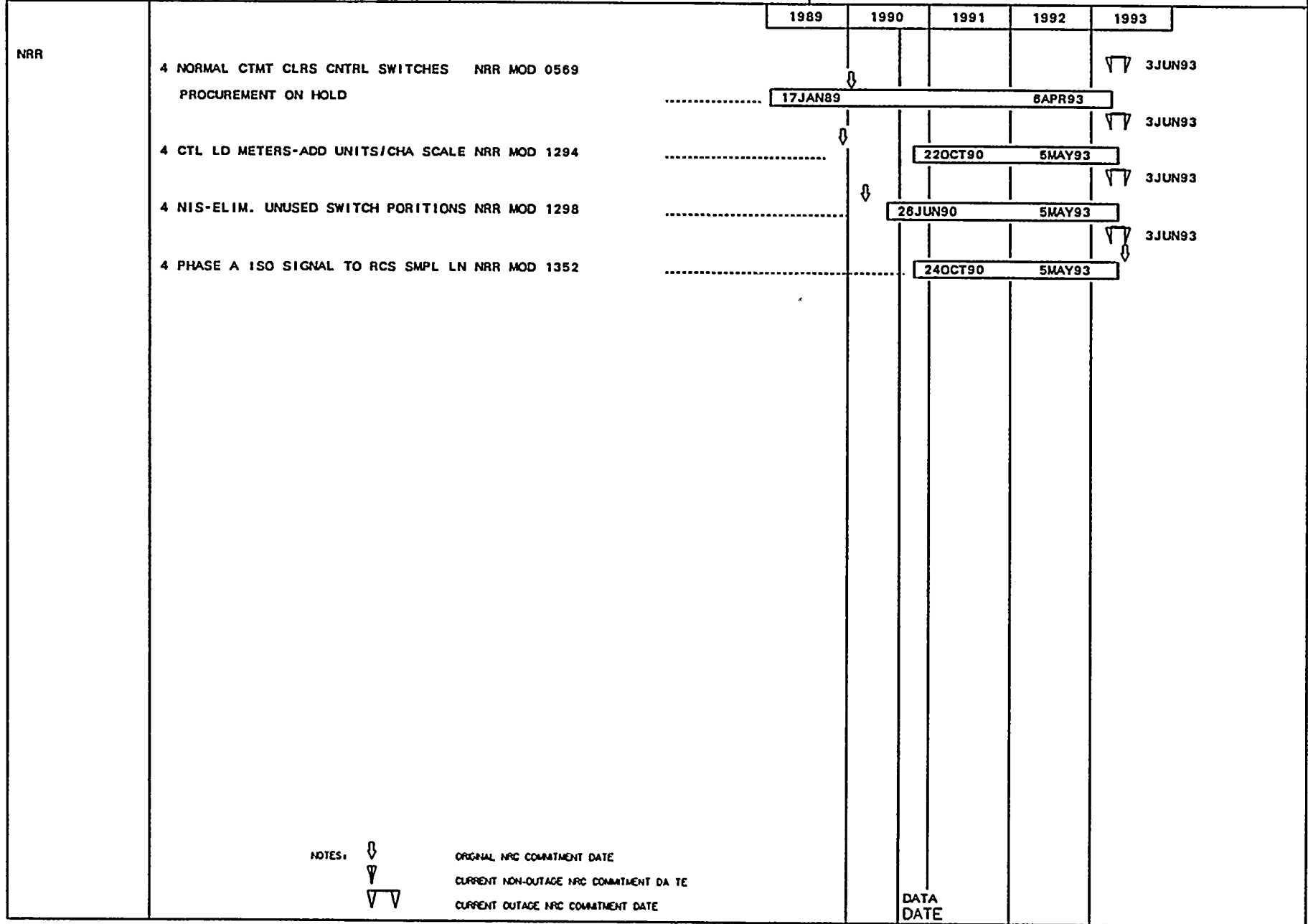


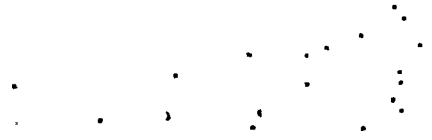
NOTES:

- ◇ ORIGINAL NRC COMMITMENT DATE
- ▽ CURRENT NON-OUTAGE NRC COMMITMENT DATE
- ▽ CURRENT OUTAGE NRC COMMITMENT DATE

DATA
DATE

| | | | | |
|-------------------|---|------------------------|--------------------|--------------------|
| PROJECT ALMEGA99 | TURKEY POINT NUCLEAR PLANT | MODE T/F/T | TARGET SCHEDULE 30 | RUN 13SEP90 14-13 |
| PROJ NRR | INTEGRATED SCHEDULE | TARG FINISH 17MAY95 | | |
| PAGE 1 SHEET 3 | FLORIDA POWER AND LIGHT CO. | TARG DATA DATE 25NOV88 | | PROJECT/J2 8683 |
| START 21JAN84 | T A R G E T S C H E D U L E | INTERRAL 1 YEAR(S) | | SCHEDULE BAR CHART |
| FINISH 30DEC95 | PAGE BREAK VALUE: 1 - NRR | SHORT BREAKS BCODES 9 | EUR 67 | |
| DATA DATE 21AUG90 | LINE BREAK ON NRC COMMITMENT CATEGORIES | | | |





434

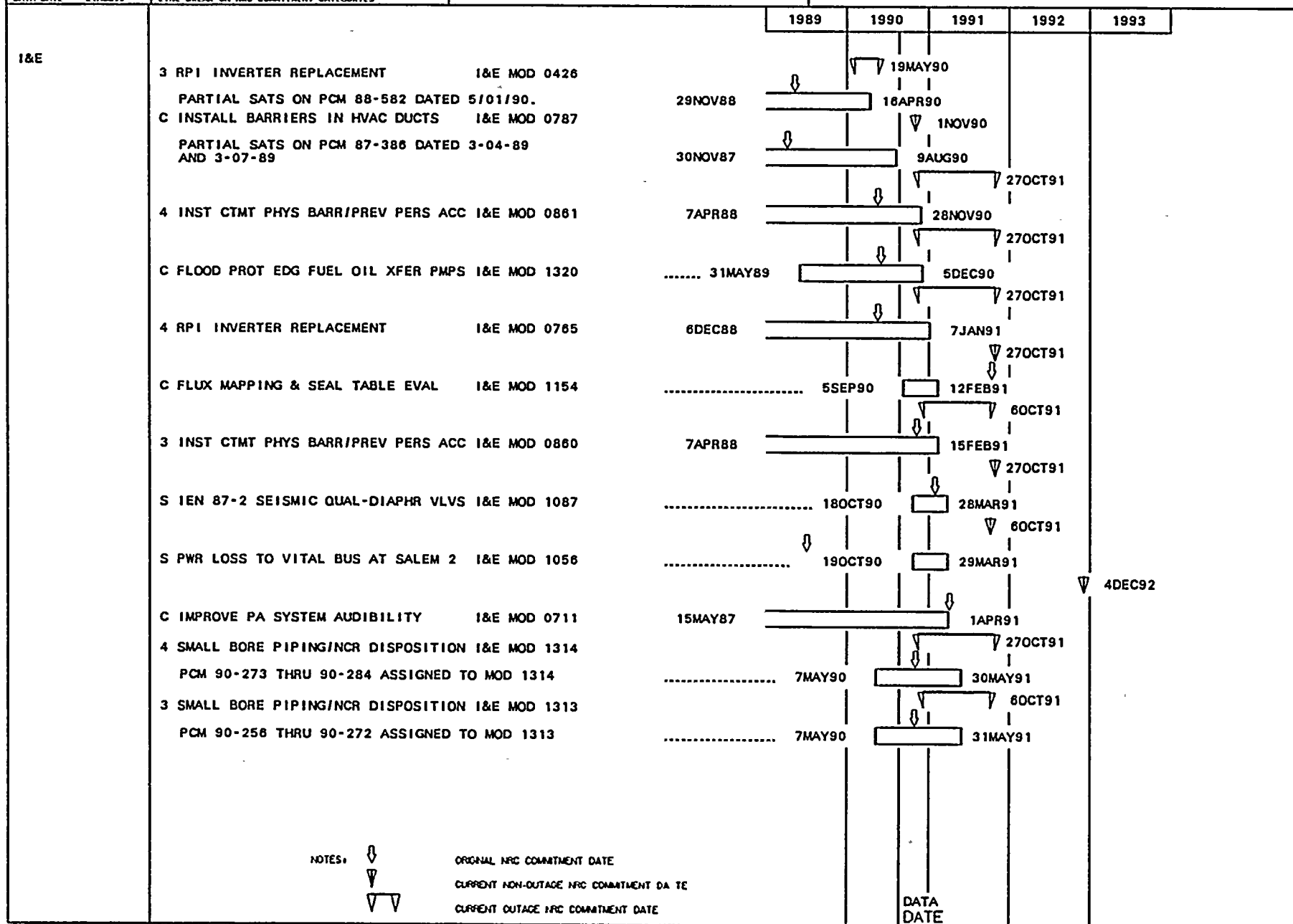
2

11 12 13 14 15 16 17 18 19 20 21 22 23 24 25 26 27 28 29 30 31 32 33 34 35 36 37 38 39 40 41 42 43 44 45 46 47 48 49 50 51 52 53 54 55 56 57 58 59 60 61 62 63 64 65 66 67 68 69 70 71 72 73 74 75 76 77 78 79 80 81 82 83 84 85 86 87 88 89 90 91 92 93 94 95 96 97 98 99 100

20

1 2 3 4 5 6 7 8 9 10 11 12 13 14 15 16 17 18 19 20 21 22 23 24 25 26 27 28 29 30 31 32 33 34 35 36 37 38 39 40 41 42 43 44 45 46 47 48 49 50 51 52 53 54 55 56 57 58 59 60 61 62 63 64 65 66 67 68 69 70 71 72 73 74 75 76 77 78 79 80 81 82 83 84 85 86 87 88 89 90 91 92 93 94 95 96 97 98 99 100

| | | | | |
|----------------------|---|----------------------|------------------------|--------------------|
| PROJECT ALMEGA99 | TURKEY POINT NUCLEAR PLANT | MODE T/FT | TARGET SCHEDULE 30 | BLN 13SEP90 18:14 |
| PLOT I&E | INTEGRATED SCHEDULE | INTERVAL 1 YEAR(S) | TARG FINISH 17MAY95 | PROJECT/2 8683 |
| PAGE 1 SHEET 1 | FLORIDA POWER AND LIGHT CO. | SHORT BREAKS 80005 9 | TARG DATA DATE 29NOV88 | SCHEDULE BAR CHART |
| START 22JAN84 | T A R G E T S C H E D U L E | CUR EF | | |
| FINISH 30DEC95 | PAGE BREAK VALUE: 4 - I&E | | | |
| DATA DATE 21AUG90 | LINE BREAK ON NRC COMMITMENT CATEGORIES | | | |

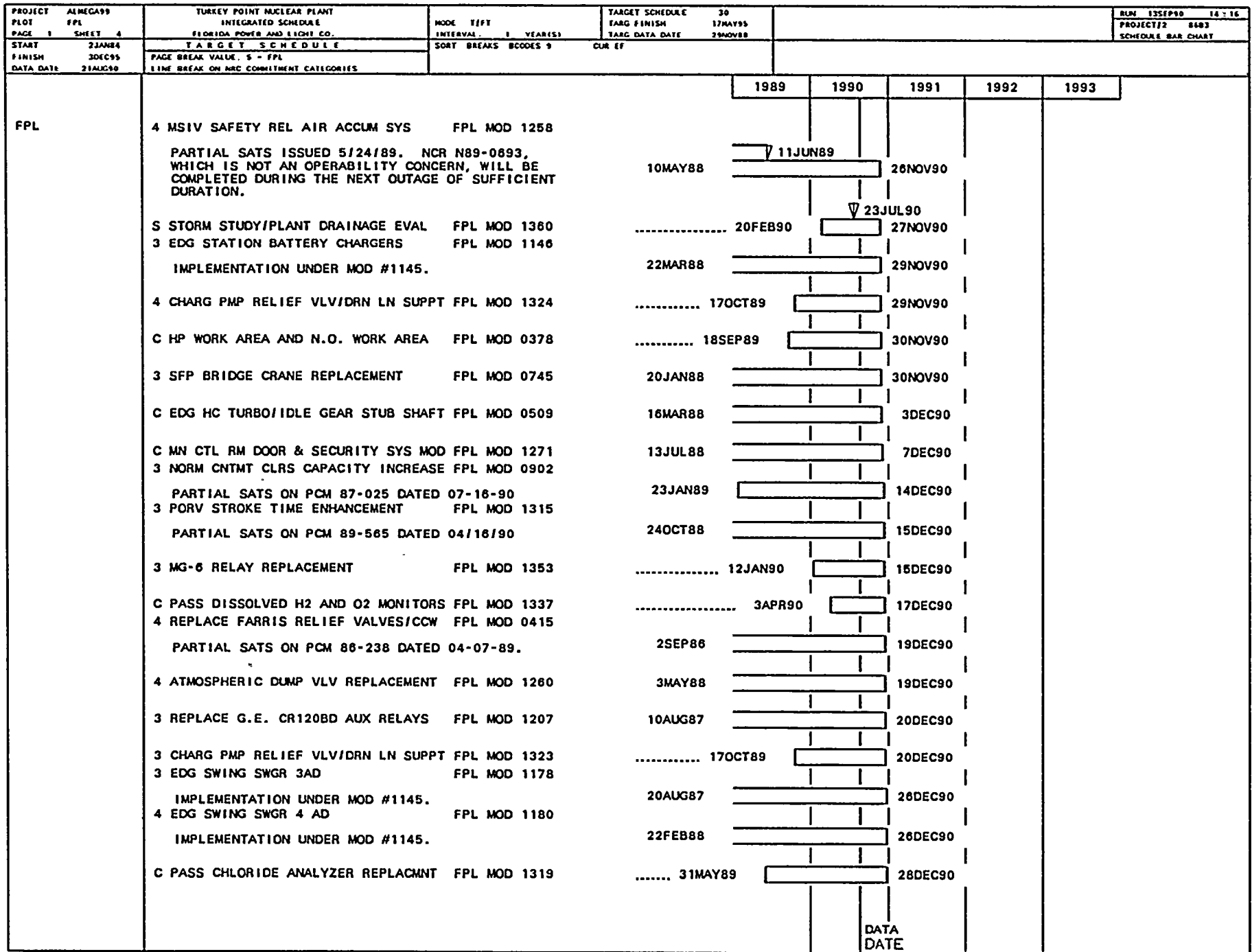


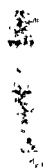
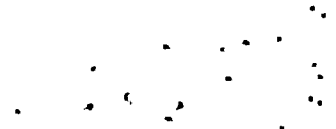
[illegible]

[illegible]

100.

[illegible]





[illegible]

| | | | | |
|-------------------|---|-----------------------|------------------------|--------------------|
| PROJECT ALHCA99 | TURKEY POINT NUCLEAR PLANT | MODE T/F/T | TARGET SCHEDULE 30 | RLN 12SEP90 16-16 |
| PLOT FPL | INTEGRATED SCHEDULE | INTERVAL 1 YEAR(S) | TARG FINISH 17MAY95 | PROJECT/2 8603 |
| PAGE 1 SHEET 6 | FLORIDA POWER AND LIGHT CO. | SHORT BREAKS BCODES 9 | TARG DATA DATE 29NOV88 | SCHEDULE BAR CHART |
| START 22JAN86 | T A R G E T S C H E D U L E | CUR EF | | |
| FINISH 30DEC95 | PAGE BREAK VALUE: 5 = FPL | | | |
| DATA DATE 21AUG90 | TIME BREAK ON NRC COMMITMENT CATEGORIES | | | |

| | 1989 | 1990 | 1991 | 1992 | 1993 |
|--|---------------|---------|-----------|------|------|
| FPL | | | | | |
| 3 BYPASS RTD ELIMINAT" N MODIFICAT" N FPL MOD 0616 | | | | | |
| NRC REVIEW AND APPROVE, LICENSING REPORT SCHEDULED TO COMPLETE 22 FEB 91. | 16JAN90 | | 22APR91 | | |
| 4 BYPASS RTD ELIMINAT" N MODIFICAT" N FPL MOD 0617 | | | | | |
| NRC REVIEW AND APPROVE, LICENSING REPORT SCHEDULED TO COMPLETE 22 FEB 91. | 16JAN90 | | 22APR91 | | |
| S STUDY/MOV FAIL" R DUE TO HAMMERING FPL MOD 0697 | 16NOV90 | | 28APR91 | | |
| C ERDADS INPUT ISOLATION ADDITIONS FPL MOD 1214 | | | | | |
| COMPLETE SATS ON PCM 87-310 DATED 10-31-89. | 10OCT89 | | 30APR91 | | |
| 4 EDG/LD CTR 4H, MCC4D & XFR OF LDS FPL MOD 1139 | | | | | |
| IMPLEMENTATION UNDER MOD #1145. | 10OCT88 | | 6MAY91 | | |
| C NEW EDG BLDGS LTG FIRE COMM HVAC FPL MOD 1175 | 1SEP87 | 7MAY91 | | | |
| C BORIC ACID CONCENTRATION REDUCTN FPL MOD 1311 | | | | | |
| NRC ISSUE TECH SPEC AMENDMENT SCHEDULED FOR 17-APR-91. | 12JUN89 | | 16MAY91 | | |
| C ADD FUSE SPEC TO BKR LIST & DWGS FPL MOD 1254 | 13DEC90 | | 22MAY91 | | |
| C DES & PURCH STA BATTERY CHARGERS FPL MOD 1275 | 13JUL88 | 22MAY91 | | | |
| C EDG BLDG (3A/4A,3B/4B) TIE-INS FPL MOD 1140 | 29SEP88 | 23MAY91 | | | |
| IMPLEMENTATION UNDER MOD #1145. | | | | | |
| 3 EDG LOAD CTR 3H/MCC 3D FPL MOD 1142 | 10OCT88 | 28MAY91 | | | |
| IMPLEMENTATION UNDER MOD #1145. | | | | | |
| PARTIAL SATS ON PCM 89-069 DATED 1/24/90 AND 2/14/90. | | | | | |
| C SECONDARY SIDE HIGH-ENERGY PIPING FPL MOD 0892 | 13JUN88 | 29MAY91 | | | |
| C EDG DIESEL/D.O.S.T. BLDG CONST FPL MOD 1174 | 8MAY87 | 5JUN91 | | | |
| PARTIAL SATS DATED 1/04/90 ON PCM 87-259 | 15JAN87 | 18JUL91 | | | |
| C NEW EDG PROJ SITE PREPARATION FPL MOD 1137 | | | | | |
| PARTIAL SATS DATED 1/04/90 ON PCM 87-212 | 1JUN90 | | 31JUL91 | | |
| C UNDERSZO NZZL-SHLL JOINTS-TNK HX FPL MOD 1343 | 29SEP88 | 3AUG91 | | | |
| C EXISTING "A" EDG IDLE START/STOP FPL MOD 0132 | | | | | |
| ENG SUPPL 2 SCHEDULED FOR PNSC 9/11/90. ENG SUPPL 3 CONTAINS TECH SPEC APPROVAL, SEQ SEISMIC REPORT AND DOCUMENTATION. | 28SEP88 | 3AUG91 | | | |
| C EXISTING "B" EDG IDLE START/STOP FPL MOD 1001 | | | | | |
| ENGINEERING SUPPLEMENT 2 IS SCHEDULED FOR PNSC 11-SEP-90. SUPPLEMENT 3 CONTAINS TECH SPEC APPROVAL, SEQ SEISMIC REPORT AND DOCUMENTATION | | | | | |
| | | | DATA DATE | | |



100



