

ACCELERATED DISTRIBUTION DEMONSTRATION SYSTEM

REGULATORY INFORMATION DISTRIBUTION SYSTEM (RIDS)

ACCESSION NBR:9009180004 DOC.DATE: 90/09/07 NOTARIZED: NO DOCKET.#
 FACIL:50-250 Turkey Point Plant, Unit 3, Florida Power and Light C 05000250
 50-251 Turkey Point Plant, Unit 4, Florida Power and Light C 05000251

AUTH.NAME AUTHOR AFFILIATION
 HARRIS,K.N. Florida Power & Light Co.
 RECIP.NAME RECIPIENT AFFILIATION
 Document Control Branch (Document Control Desk)

SUBJECT: Forwards Jul 1990 integrated schedule regulatory rept for facilities.

DISTRIBUTION CODE: A001D COPIES RECEIVED:LTR 1 ENCL 1 SIZE: 20
 TITLE: OR Submittal: General Distribution

NOTES:

	RECIPIENT		COPIES			RECIPIENT		COPIES	
	ID	CODE/NAME	LTR	ENCL		ID	CODE/NAME	LTR	ENCL
	PD2-2	LA	1	1		PD2-2	PD	1	1
	EDISON,	G	2	2					
INTERNAL:	NRR/DET/ECMB	9H	1	1		NRR/DOEA/OTSB11		1	1
	NRR/DST	8E2	1	1		NRR/DST/SELB	8D	1	1
	NRR/DST/SICB	7E	1	1		NRR/DST/SRXB	8E	1	1
	NUDOCS-ABSTRACT		1	1		OC/LFMB		1	0
	OGC/HDS2		1	0		REG-FILE	01	1	1
	RES/DSIR/EIB		1	1					
EXTERNAL:	NRC	PDR	1	1		NSIC		1	1

NOTE TO ALL "RIDS" RECIPIENTS:

PLEASE HELP US TO REDUCE WASTE! CONTACT THE DOCUMENT CONTROL DESK,
 ROOM P1-37 (EXT. 20079) TO ELIMINATE YOUR NAME FROM DISTRIBUTION
 LISTS FOR DOCUMENTS YOU DON'T NEED!

TOTAL NUMBER OF COPIES REQUIRED: LTR 17 ENCL 15

MA 4
 sub



SEP 07 1990

L-90-325

U. S. Nuclear Regulatory Commission
Attn: Document Control Desk
Washington, D. C. 20555


Gentlemen:

Re: Turkey Point Unit 3 and 4
Docket No. 50-250 and 50-251
Integrated Schedule Regulatory Report

Attached is the July, 1990, Integrated Schedule (I/S) Regulatory Report for the Turkey Point Plant. The schedules discussed in this report reflect information updated since the May, 1990, Regulatory Report which was submitted to the NRC on July 19, 1990. The changes to the schedules discussed in this report have been reviewed with the NRC Project Manager for the Turkey Point Plant in accordance with the Integrated Schedule Plan.

Should you have any questions regarding this report, please contact us.

Very truly yours,


K. N. Harris
Vice President
Turkey Point Plant Nuclear

KNH/DRP/DPS/ds

attachment

cc: Stewart D. Ebnetter, Regional Administrator, Region II, USNRC
Senior Resident Inspector, USNRC, Turkey Point Plant

9009180004 900907
PDR ADOCK 05000250
R PDC

00083

an FPL Group company

Handwritten: A001
111

ATTACHMENT 1

TURKEY POINT UNITS 3 AND 4

JULY, 1990 INTEGRATED SCHEDULE

The following is a summary of the I/S modifications for the Integrated Schedule Regulatory Report.

The July, 1990, Integrated Schedule is based on the following outages:

<u>OUTAGE DESCRIPTION</u>	<u>START</u>	<u>FINISH</u>
Unit 3 Diesel Tie-in	12/09/90	10/06/91
Unit 3 Cycle 13 Refueling	08/21/92	12/04/92
Unit 3 Cycle 14 Refueling	04/01/94	06/03/94
Unit 4 Cycle 13 Refueling	11/15/90	10/27/91
Unit 4 Cycle 14 Refueling	04/01/93	06/03/93
Unit 4 Cycle 15 Refueling	10/01/94	12/03/94

NRC COMMITTED MODIFICATIONS ADDED

<u>I/S #</u>	<u>UNIT - DESCRIPTION</u>	<u>LIC</u> <u>CAT</u>
- - - -	NONE - - - -	

NRC COMMITTED MODIFICATIONS COMPLETED




<u>I/S #</u>	<u>UNIT - DESCRIPTION</u>	<u>LIC</u> <u>CAT</u>
- - - -	NONE - - - -	

NRC COMMITTED MODIFICATIONS CANCELLED

<u>I/S #</u>	<u>UNIT - DESCRIPTION</u>	<u>LIC</u> <u>CAT</u>
- - - -	NONE - - - -	

NRC MODIFICATIONS WITH FORECAST COMPLETION DATES BEYOND THEIR
COMMITTED DATES

<u>I/S #</u>	<u>UNIT - DESCRIPTION</u>	<u>LIC CAT</u>	<u>JUNE 1990</u>	<u>JULY 1990</u>	<u>NRC DATE JULY 1990</u>
550	3 NORMAL CTMT CLRS CTRL SWs	NRR	08/26/92	08/26/92	10/06/91
569	4 NORMAL CTMT CLRS CTRL SWs	NRR	04/06/93	04/06/93	10/27/91
792	S CTRL RM LIGHTING EVAL	NRR	07/26/90	09/13/90	07/01/90
1186	C SEC PLT ENTRANCE FACILITY	NRR	07/30/90	09/14/90	08/31/90
1246	4 TURB RUNBACK SLCTR SW REPL	NRR	04/01/93	04/01/93	10/27/91
1293	3 CTR LD METERS-ADD UNITS	NRR	09/24/92	09/24/92	10/06/91
1294	4 CTR LD METERS-ADD UNITS	NRR	05/05/93	05/05/93	10/27/91
1297	3 NIS-ELIM UNUSED SW POSITNS	NRR	09/24/92	09/24/92	10/06/91
1298	4 NIS-ELIM UNUSED SW POSITNS	NRR	05/05/93	05/05/93	10/27/91
787	C INSTL BARRIERS HVAC DUCTS	I&E	07/17/90	08/03/90	05/19/90
860	3 INST CTMT PHYS BARR/PREV	I&E	10/29/92	10/29/92	05/19/90
861	4 INST CTMT PHYS BARR/PREV	I&E	04/14/93	04/14/93	10/27/91
1313	3 SMALL BORE PIPING/NCR DISP	I&E	02/11/93	02/11/93	10/06/91

PROJECT ALMEGA99 CFO	TURKEY POINT NUCLEAR PLANT INTEGRATED SCHEDULE FLORIDA POWER AND LIGHT CO.	MODE TIFT INTERVAL - 1 YEAR(S)	TARGET SCHEDULE 30 TARG FINISH 17MAY95 TARG DATA DATE 29NOV88	RUN 2ALC90 18 - 53 PROJECT#2 8683 SCHEDULE BAR CHART
PAGE 1 SHEET 1	TARGET SCHEDULE	SORT BREAKS BCODES 9	CUR EF	
START 23JAN84 FINISH 16AUG95 DATA DATE 28JUN90	LINE BREAK ON NRC COMMITMENT CATEGORIES LINE BREAK ON CFO SUB-SYSTEM			
CFO	POST TMI CONFIRMATORY MODIFICAT'N	C AREA RADIATION MONIT'G SYST REPL CFO MOD 0341 18AUG89	1989 1990 1991 1992 1993 31DEC90 7DEC90
	P04-T11.20 U4 SEL SYS MODS/REPAIRS	C EDG AIR START MOTORS UPGRADE CFO MOD 0576	18JUL86	27OCT91 17APR91
	POST PEP	4 RHR-INSTL UPGRADED 8" GLOBE VLV CFO MOD 0565	5FEB88	27OCT91 26NOV90
NOTES:  ORIGINAL NRC COMMITMENT DATE  CURRENT NON-OUTAGE NRC COMMITMENT DATE  CURRENT OUTAGE NRC COMMITMENT DATE				DATA DATE



10-1-78

2

.

+

-

c

4

.

b

.

A

2

1

1

4

.

.

.

.

.

.

.

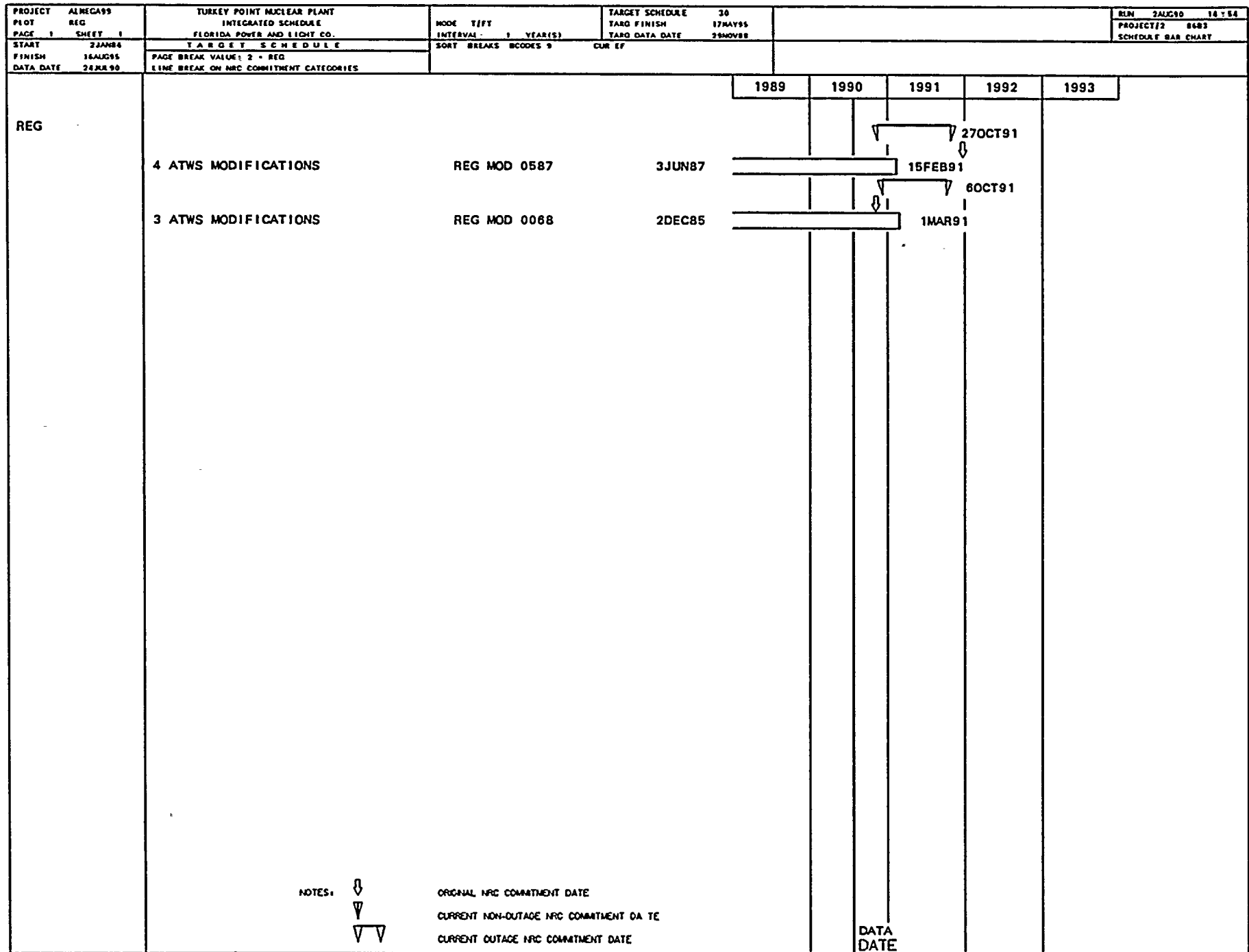
.

.

.

, 11

A



PROJECT ALMEGA99	TURKEY POINT NUCLEAR PLANT	MODE T/FT	TARGET SCHEDULE 30	RUN 2AUG90 14 55
PLOT NRR	INTEGRATED SCHEDULE	INTERVAL 1 YEAR(S)	TARG FINISH 17MAY95	PROJECT/2 8683
PAGE 1 SHEET 1	FLORIDA POWER AND LIGHT CO.		TARG DATA DATE 29NOV88	SCHEDULE BAR CHART
START 2JAN84	TARGET SCHEDULE	SORT BREAKS BCODES 9	CUR EF	
FINISH 15AUG95	PAGE BREAK VALUE: 3 - NRR			
DATA DATE 25JUN90	LINE BREAK ON NRC COMMITMENT CATEGORIES			

NRR

3 RENUMBER/RELABEL RCS VENT VALVES NRR MOD 1295
PARTIAL SATS ON DEEP 87-213 DATED 5/03/90.

S CNTRL ROOM HFE ANNUNCIATOR STUDY NRR MOD 1011

S CNTRL ROOM LIGHTING EVALUATION NRR MOD 0792

C SECURITY PLANT ENTRANCE FACILITY NRR MOD 1186

3 REACTOR HEAD LIFT RIG LOAD CELL NRR MOD 1069

4 RENUMBER/RELABEL RCS VENT VALVES NRR MOD 1296

S SFTY PARAMTR DISPLAY SYS HFE REVW NRR MOD 1289

4 GL 88-17 LOSS OF DECAY HEAT REMVL NRR MOD 1328

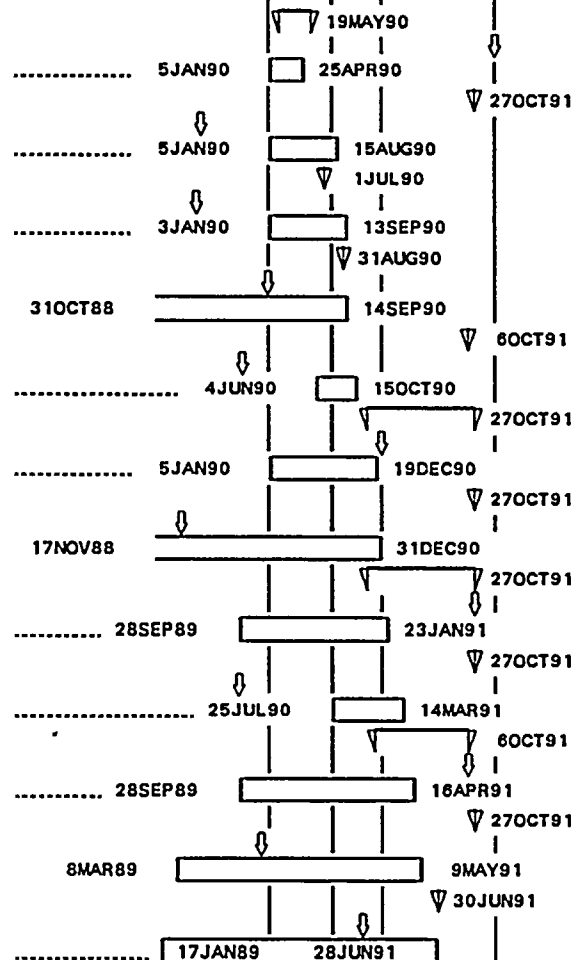
4 REACTOR HEAD LIFT RIG LOAD CELL NRR MOD 1070

3 GL 88-17 LOSS OF DECAY HEAT REMVL NRR MOD 1327
COMPLETE SATS ON PCM 89-275 DATED 5/22/90.

S THERMAL STRESS PPG CONNCTD TO RCS NRR MOD 1312

S PROBABILTY RISK ASSESSMNT PROGRAM NRR MOD 1325

1989 1990 1991 1992 1993



NOTES:



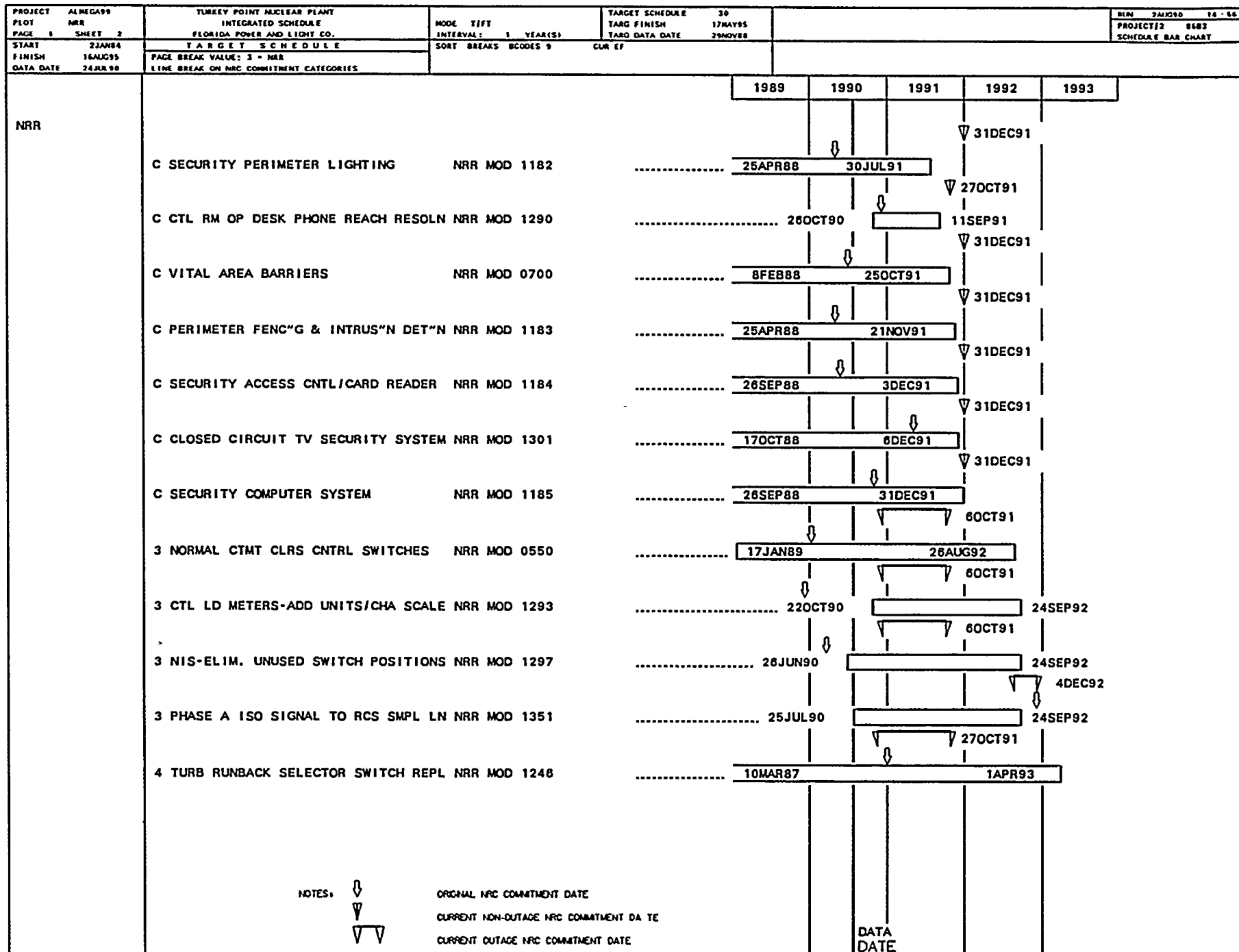
ORIGINAL NRC COMMITMENT DATE

CURRENT NON-OUTAGE NRC COMMITMENT DATE

CURRENT OUTAGE NRC COMMITMENT DATE

DATA
DATE

1.





100

1

2

3

4

5

6

7

8

9

10

11

12

13

14

15

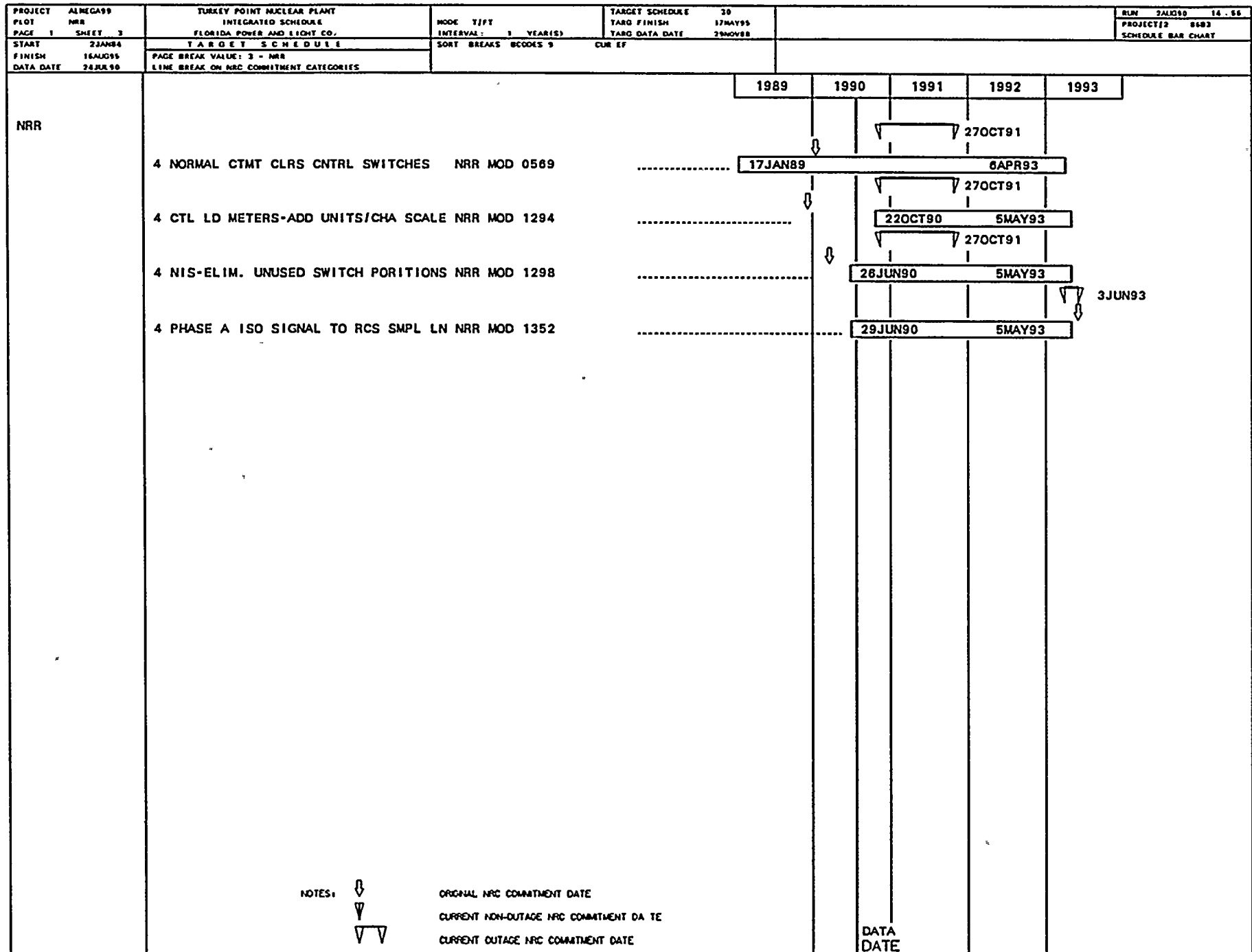
16

17

18

19

20





10

20

10

10

10

10

10

10

10

10

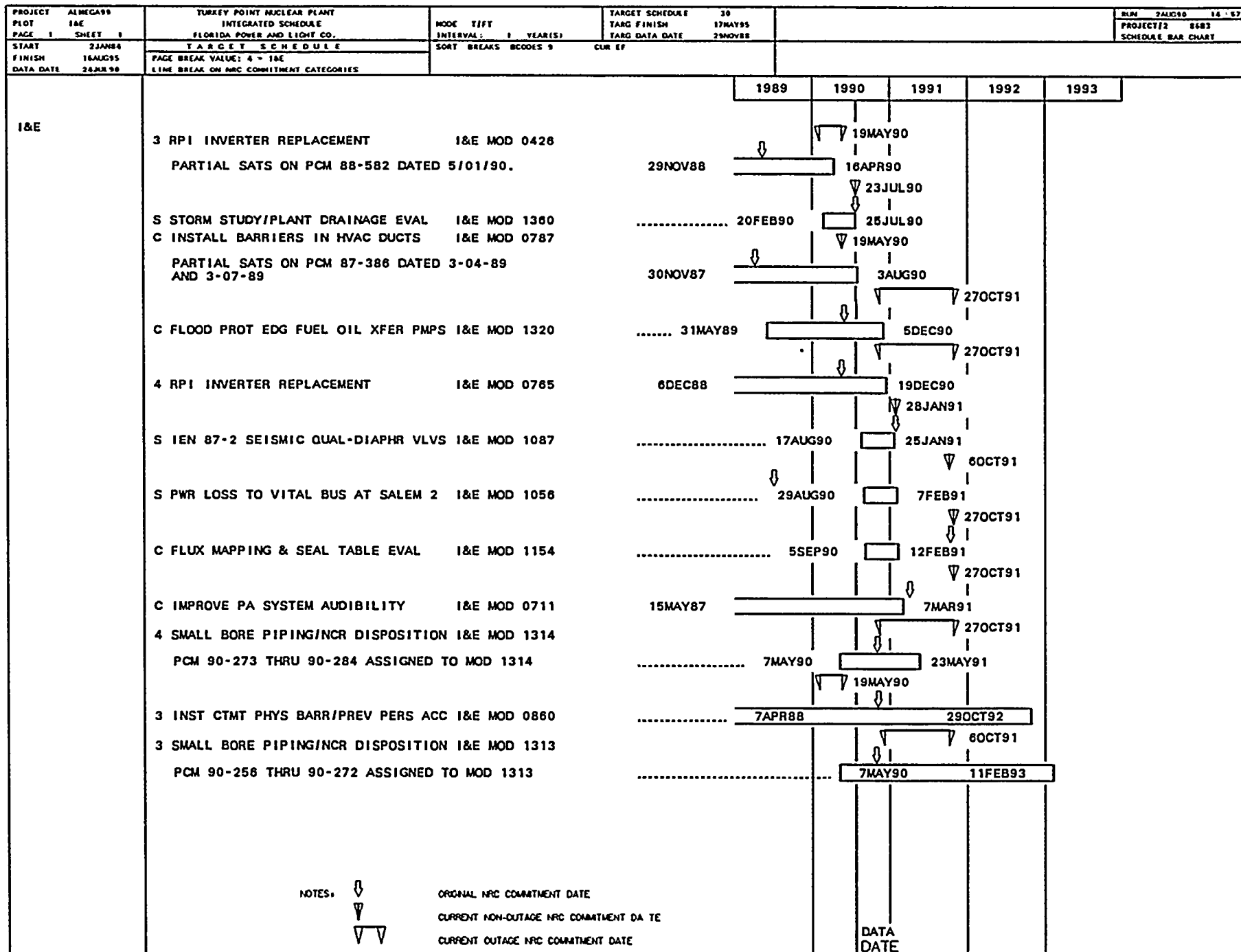
10

10

10

10

10



[illegible]

PROJECT PLOT PAGE 1 SHEET 1	ALMEGA99 ORA	TURKEY POINT NUCLEAR PLANT INTEGRATED SCHEDULE FLORIDA POWER AND LIGHT CO.	MODE 1/FT INTERVAL 1 YEAR(S)	TARGET SCHEDULE TARG FINISH 30 17MAY95 TARG DATA DATE 26NOV88	RUN 2AUG90 16:58 PROJECT/2 8683 SCHEDULE BAR CHART																																																																																																
START 2JAN84 FINISH 16AUG95 DATA DATE 24JUL90	TARGET SCHEDULE PAGE BREAK VALUE: 6 - ORA LINE BREAK ON NRC COMMITMENT CATEGORIES		SORT BREAKS BCODES 9 CUR EF																																																																																																		
<table><thead><tr><th></th><th>1989</th><th>1990</th><th>1991</th><th>1992</th><th>1993</th></tr></thead><tbody><tr><td>ORA</td><td colspan="5"></td></tr><tr><td>4 GENERATOR H2 MONITORING SYSTEM ORA MOD 0582 PARTIAL SATS ON PCM 86-203 DATED 10-10-89.</td><td>22DEC86</td><td>12JUN89</td><td></td><td></td><td></td></tr><tr><td>S SOER 86-3 CK VLV APPLICATION RVW ORA MOD 1268 C GAS ANALYZER SYSTEM MOD ORA MOD 0036 PARTIAL SATS ON PCM 84-165 DATED 03/22/90</td><td>10AUG88</td><td></td><td>15AUG90</td><td></td><td></td></tr><tr><td></td><td>2DEC85</td><td></td><td>21SEP90</td><td></td><td></td></tr><tr><td>C WASTE NEUTR & WTP SYSTEM MOD ORA MOD 0042</td><td>9JAN86</td><td></td><td>9NOV90</td><td></td><td></td></tr><tr><td>4 REDUCTION IN 4KV BKR VOLTAGE DROP ORA MOD 1253</td><td>1JUN87</td><td></td><td>17NOV90</td><td></td><td></td></tr><tr><td>4 LOAD CENTERS X-FORMER REPLACEMENT ORA MOD 1081</td><td>..... 16FEB90</td><td></td><td>3DEC90</td><td></td><td></td></tr><tr><td>3 REDUCTION IN 4KV BKR VOLTAGE DROP ORA MOD 1252</td><td>1JUN87</td><td></td><td>12DEC90</td><td></td><td></td></tr><tr><td>3 LOAD CENTERS X-FORMER REPLACEMENT ORA MOD 0661</td><td>..... 14AUG89</td><td></td><td>27DEC90</td><td></td><td></td></tr><tr><td>C ADD'N OF "SWING" STATION BATTERY ORA MOD 1272</td><td>22SEP88</td><td></td><td>30APR91</td><td></td><td></td></tr><tr><td>C WTP IN-LINE CHEMISTRY MONITORS ORA MOD 0767</td><td>..... 22OCT90</td><td></td><td>5SEP91</td><td></td><td></td></tr><tr><td>C REPL FIRE WTR SYS MN PP W/10" LN ORA MOD 1281</td><td>..... 22OCT90</td><td></td><td>17OCT91</td><td></td><td></td></tr><tr><td>3 SECONDARY CHEM INLINE MONITORS ORA MOD 0102</td><td>..... 20DEC90</td><td></td><td></td><td>16OCT92</td><td></td></tr><tr><td>4 SECONDARY CHEM INLINE MONITORS ORA MOD 0103</td><td>.....</td><td></td><td>21AUG90</td><td>26MAY93</td><td></td></tr><tr><td colspan="6">DATA DATE</td></tr></tbody></table>							1989	1990	1991	1992	1993	ORA						4 GENERATOR H2 MONITORING SYSTEM ORA MOD 0582 PARTIAL SATS ON PCM 86-203 DATED 10-10-89.	22DEC86	12JUN89				S SOER 86-3 CK VLV APPLICATION RVW ORA MOD 1268 C GAS ANALYZER SYSTEM MOD ORA MOD 0036 PARTIAL SATS ON PCM 84-165 DATED 03/22/90	10AUG88		15AUG90				2DEC85		21SEP90			C WASTE NEUTR & WTP SYSTEM MOD ORA MOD 0042	9JAN86		9NOV90			4 REDUCTION IN 4KV BKR VOLTAGE DROP ORA MOD 1253	1JUN87		17NOV90			4 LOAD CENTERS X-FORMER REPLACEMENT ORA MOD 1081 16FEB90		3DEC90			3 REDUCTION IN 4KV BKR VOLTAGE DROP ORA MOD 1252	1JUN87		12DEC90			3 LOAD CENTERS X-FORMER REPLACEMENT ORA MOD 0661 14AUG89		27DEC90			C ADD'N OF "SWING" STATION BATTERY ORA MOD 1272	22SEP88		30APR91			C WTP IN-LINE CHEMISTRY MONITORS ORA MOD 0767 22OCT90		5SEP91			C REPL FIRE WTR SYS MN PP W/10" LN ORA MOD 1281 22OCT90		17OCT91			3 SECONDARY CHEM INLINE MONITORS ORA MOD 0102 20DEC90			16OCT92		4 SECONDARY CHEM INLINE MONITORS ORA MOD 0103		21AUG90	26MAY93		DATA DATE					
	1989	1990	1991	1992	1993																																																																																																
ORA																																																																																																					
4 GENERATOR H2 MONITORING SYSTEM ORA MOD 0582 PARTIAL SATS ON PCM 86-203 DATED 10-10-89.	22DEC86	12JUN89																																																																																																			
S SOER 86-3 CK VLV APPLICATION RVW ORA MOD 1268 C GAS ANALYZER SYSTEM MOD ORA MOD 0036 PARTIAL SATS ON PCM 84-165 DATED 03/22/90	10AUG88		15AUG90																																																																																																		
	2DEC85		21SEP90																																																																																																		
C WASTE NEUTR & WTP SYSTEM MOD ORA MOD 0042	9JAN86		9NOV90																																																																																																		
4 REDUCTION IN 4KV BKR VOLTAGE DROP ORA MOD 1253	1JUN87		17NOV90																																																																																																		
4 LOAD CENTERS X-FORMER REPLACEMENT ORA MOD 1081 16FEB90		3DEC90																																																																																																		
3 REDUCTION IN 4KV BKR VOLTAGE DROP ORA MOD 1252	1JUN87		12DEC90																																																																																																		
3 LOAD CENTERS X-FORMER REPLACEMENT ORA MOD 0661 14AUG89		27DEC90																																																																																																		
C ADD'N OF "SWING" STATION BATTERY ORA MOD 1272	22SEP88		30APR91																																																																																																		
C WTP IN-LINE CHEMISTRY MONITORS ORA MOD 0767 22OCT90		5SEP91																																																																																																		
C REPL FIRE WTR SYS MN PP W/10" LN ORA MOD 1281 22OCT90		17OCT91																																																																																																		
3 SECONDARY CHEM INLINE MONITORS ORA MOD 0102 20DEC90			16OCT92																																																																																																	
4 SECONDARY CHEM INLINE MONITORS ORA MOD 0103		21AUG90	26MAY93																																																																																																	
DATA DATE																																																																																																					

PROJECT ALMEGA99		TURKEY POINT NUCLEAR PLANT		TARGET SCHEDULE		RUN 2AUG90 14:59		
PLOT FPL		INTEGRATED SCHEDULE		TARG FINISH 17MAY95		PROJECT# 8683		
PAGE 1 SHEET 1		FLORIDA POWER AND LIGHT CO.		TARG DATA DATE 29NOV88		SCHEDULE BAR CHART		
START 22JAN84		TARGET SCHEDULE		CUR EF				
FINISH 16AUG95		PAGE BREAK VALUE: 5 = FPL						
DATA DATE 28JUL90		LINE BREAK ON NRC COMMITMENT CATEGORIES						
				1989	1990	1991	1992	1993
FPL	4 CONDENSER CATHODIC PROT UPGRADE FPL MOD 1122							
	NEED SATS FOR CLOSURE	3MAY88	7MAR89					
	C EDG ENGINE CNTL PNL LIGHT UPGRADE FPL MOD 0451							
	PARTIAL SATS ON PCM 86-185 DATED 3/22/89.	18JUL86	22MAR89					
	4 CCW HEAT EXCHANGER REPLACEMENT FPL MOD 1280							
	PARTIAL SATS ON PCM 88-283 DATED 01-24-89.	27JUN88	22MAR89					
	4 ISO SV-20-OPC TURBINE PROT"N SYS FPL MOD 0584							
	COMPLETE SATS ON PCM 86-154.	3NOV86	27MAR89					
	4 STM GENERATOR J NOZZLE REPLACEMNT FPL MOD 1274							
	NEED SATS FOR CLOSURE	28JUN88	2MAY89					
	4 REPLACE VELAN CHECK VALVE DISK FPL MOD 0420							
	COMPLETE SATS ON PCM 86-185 DATED 03-13-90	18JUN87	11MAY89					
	4 CONDENSER INLET WATERBOX REPAIR FPL MOD 1288							
	WORK PERFORMED UNDER DEEP 88-344	14SEP88	22MAY89					
	PARTIAL SATS ON DEEP 88-344 DATED 05-04-89							
	4 MOV FAIL DUE TO IMPROPER SW SET"G FPL MOD 1110							
	THE COMMITMENT RELATED PORTION OF THIS MODIFICATION WAS COMPLETED IN MARCH 1989.	15JAN87	11JUN89					
	THE REMAINDER OF THE WORK IS NOT I&E RELATED.		1JUN89					
	PARTIAL SATS ON PCM 87-006 & 87-009 -04-MAR-89							
	4 REPLACE LOW PRESSURE ROTORS FPL MOD 0067							
	PARTIAL SATS ON PCM 87-205 DATED 05-23-89.	31OCT84	12JUN89					
	C ELECT DWG SEPARAT"N & RENUMBERING FPL MOD 1095							
	PARTIAL SATS ON PCM 87-279 DATED 04-13-89.	5JUN87	13JUN89					
	4 RHR PUMPS SEAL UPGRADE FPL MOD 1173							
	PARTIAL SATS ON PCM 88-078 DATED 2/10/89.	3AUG87	13JUN89					
	4 REPL EXTR STM CS PPG W/ CR MOLY FPL MOD 1262							
	PARTIAL SATS ON PCM 88-302 DATED 05-08-89.	15JUL88	13JUN89					
	S REVIEW VALVES SOER 81-83 FPL MOD 0620							
	CLOSED PER PRB 7/25/90.	2JAN87	29NOV89					
	4 NORM CNTMT CLRS CAPACITY INCREASE FPL MOD 0903							
	PARTIAL SATS ON PCM 87-026 DATED 04-22-89.	7APR88	23JAN90					
	3 RHR PUMPS SEAL UPGRADE FPL MOD 1172							
	PARTIAL SATS ON PCM 88-077 DATED 03/28/90	31AUG87	23MAR90					
3 ICW CRAWL THRU INSPECT & REPAIR FPL MOD 1338								
SATS REQUIRED FOR CLOSURE. 20JUL89	23MAR90						
3 RHR-INSTL UPGRADED 8" GLOBE VLV FPL MOD 0519								
THE COMMITMENT RELATED PORTION OF THIS MOD IS COMPLETE PER LETTER JPN-PTP 90-0956. (3/28/90)	5MAY88	19MAY90						
THE REMAINDER OF THE WORK IS NOT CFO RELATED.		2APR90						
COMPLETE SATS ON PCM 89-326 DATED 07-25-90.								
				DATA DATE				

PROJECT ALMEGA99		TURKEY POINT NUCLEAR PLANT		MODE T/FT		TARGET SCHEDULE		BLN 7AUG90 15-00	
PLOT FPL		INTEGRATED SCHEDULE		INTERVAL 1 YEAR(S)		TARG FINISH 17MAY95		PROJECT/2 \$683	
PAGE 1 SHEET 2		FLORIDA POWER AND LIGHT CO.				TARG DATA DATE 29NOV88		SCHEDULE BAR CHART	
START 22JAN84		TARGET SCHEDULE		SORT BREAKS BCODES 9		CUR EF			
FINISH 16AUG95		PAGE BREAK VALUE: 5 - FPL							
DATA DATE 24JUL90		LINE BREAK ON NRC COMMITMENT CATEGORIES							
FPL	S ICW CK VLV OPER W/IA FAILURE FPL MOD 1283	26OCT87	10APR90						
	NEED ENGINEERING LETTER FOR CLOSURE.								
	3 AFW FLOW TRANSMITTER REPLACEMENT FPL MOD 0250	3JUN86	11APR90						
	COMPLETE SATS ON PCM 90-088 DATED 07-13-90								
	3 PZR RLF LN SNUBBER REPLACEMENT FPL MOD 1267	5OCT88	18APR90						
	PARTIAL SATS ON PCM 89-046 DATED 04/16/90								
	3 MSIV AIR OPERATOR BACKUP N2 SYST FPL MOD 0267	2DEC85	23APR90						
	SATS REQUIRED FOR CLOSURE.								
	S ACCEPTABILITY OF DC EQUIP RATINGS FPL MOD 0404	11JAN88	27APR90						
	COMPLETE PER LETTER JPN-PTP-89-2521.								
	3 ATMOSPHERIC DUMP VLV REPLACEMENT FPL MOD 1259	3MAY88	21MAY90						
	PARTIAL SATS ON PCM 88-517 DATED 05-11-90 AND 07-16-90								
	3 SI ACCUM LVL TRANSMITTER PLATFORM FPL MOD 1350	20OCT89	21MAY90						
	COMPLETE SATS ON PCM 89-500 DATED 07-18-90								
	3 SGWL CNTMT ISOLAT"N VLV REPLACEMT FPL MOD 0293	21MAR86	22MAY90						
	PARTIAL SATS ON PCM 86-077 DATED 6/13/90.								
	3 NORM CNTMT CLRS CAPACITY INCREASE FPL MOD 0902	23JAN89	29MAY90						
	PARTIAL SATS ON PCM 87-025 DATED 07-16-90								
	S METEOROLOGICAL SYSTEMS EVALUATION FPL MOD 1053	1SEP89	4JUN90						
	COMPLETE PER LETTER JPN-PTP-90-1670.								
	4 BACKUP INSTR. AIR COMPRESSOR FPL MOD 0291	4APR86	24JUL90						
	SATS REQUIRED FOR CLOSURE.								
	C PASS CHLORIDE ANALYZER REPLACMNT FPL MOD 1319	31MAY89	24JUL90						
	3 MSR MODERNIZATION REPLACEMENT FPL MOD 0050								
	PARTIAL SATS ON PCM 85-132 DATED 07-02-87.	2DEC85	25JUL90						
	3 BORIC ACID EVAP PMP UPGRADE FPL MOD 0237								
	NEED SATS FOR CLOSURE	12NOV85	25JUL90						
	3 MAIN STM SAFETY LIFTING LEVERS FPL MOD 0422								
	SATS REQUIRED FOR CLOSURE.	17APR86	25JUL90						
	3 ADD"L CNTMT ELECT PENETRATIONS FPL MOD 0549								
	PARTIAL SATS ON PCM 89-335 - 3/22/90 & 5/1/90	15FEB89	25JUL90						
	S MOV THERMAL OVERLOAD HTR SELECTN FPL MOD 1249								
	REF. LTR JPE-PT-P-88-1051 CONFIRMS MEETING								
	NRC COMMIT ON JUN 20, 1988. COMPLETION OF PREP								
	& APPVL OF STD E-3.20 MEETS NRC COMMITMENT.								
	EP TO BE ISS SPECIFYING TOL"S FOR MOV"S.								
	IS NOT NRC COMMITMENT RELATED.	19OCT87	25JUL90						
	3 INSPECT/REPAIR INTAKE STRUCTURE FPL MOD 1348	30OCT89	25JUL90						

PROJECT PLOT PAGE 1 SHEET 3	ALMEGA99 FPL	TURKEY POINT NUCLEAR PLANT INTEGRATED SCHEDULE FLORIDA POWER AND LIGHT CO.	MODE T/FT INTERVAL 1 YEAR(S)	TARGET SCHEDULE TARG FINISH 17MAY95 TARG DATA DATE 29NOV88	30	RLN 2AUG90 15:06	PROJECT#2 8683	SCHEDULE BAR CHART	
START 22JAN84 FINISH 16AUG95 DATA DATE 28JUL90	TARGET SCHEDULE PAGE BREAK VALUE: 5 - FPL LINE BREAK ON NRC COMMITMENT CATEGORIES		SORT BREAKS BCODES 9 CUR IF						
					1989	1990	1991	1992	1993
FPL	4 ADD & RELOCATE AFW N2 SUPPLY FPL MOD 0216 COMPLETE SATS ON PCM 85-176 DATED 06-27-87. COMPLETE SATS ON PCM 88-045 DATED 04-04-88. PARTIAL SATS ON PCM 88-184 DATED 04-21-89. 3 REMOVAL OF TPCW AMERTAP SYSTEM FPL MOD 1317 TPCW AMERTAP SYSTEM WORK WAS SPLIT FROM MOD 531. TPCW AMERTAP WAS NOT NRC COMMITMENT RELATED. 4 TPCW HX ISOLTN - CV2201 FAIL CLSE FPL MOD 1285 PARTIAL SATS ON PCM 88-346 DATED 04-29-89. 3 CHARG PUMP SUCTN QUICK DISCONNECT FPL MOD 0431 4 CHARG PUMP SUCTN QUICK DISCONNECT FPL MOD 1255 C W.T.P. FLOW METERS UPGRADE FPL MOD 0151 3 REPL CCW HX THERMOMETERS W/RTD'S FPL MOD 0417 SATS REQUIRED FOR CLOSURE. 4 REPL TUBE SIDE CCW HX TIS W/RTD'S FPL MOD 0418 S ICW PMP FDN SFTY HAZARD EVALUAT'N FPL MOD 1310 C REG GUIDE 1.97 AUDIT PREP FPL MOD 1326 4 CHEM INJECTION OF ICW TO CCW HX FPL MOD 1322 3 PORV STROKE TIME ENHANCEMENT FPL MOD 1315 PARTIAL SATS ON PCM 89-565 DATED 04/16/90 S RESOLVE CNTMT PURG FSAR DISCREP FPL MOD 0828 S BOUNDARIES FOR VISUAL LEAK INSP FPL MOD 0396 C CONTROL ROOM HABITABILITY HVAC FPL MOD 0014 THE COMMITMENT RELATED PORTION OF THIS MODIFICATION HAS BEEN COMPLETED. ENHANCEMENTS TO THE CONTROL ROOM HVAC SYST. BEYOND 17 JUN 88 ARE NOT CFO RELATED. 4 HIGH INITIAL RESPONSE EXCITER FPL MOD 0979 PARTIAL SATS ON PCM 86-201 DATED 05-22-89. 4 SFP DEMIN RESIN FLUSH UPGRADE FPL MOD 1155 3 SFP DEMIN RESIN FLUSH UPGRADE FPL MOD 0956				2DEC85	27JUL90			
		18NOV86	3AUG90						
		15NOV88	6AUG90						
		22DEC86	7AUG90						
		22DEC86	7AUG90						
		11FEB86	8AUG90						
		30MAR87	10AUG90						
		15APR87	10AUG90						
	 1FEB90	10AUG90						
	 17AUG89	17AUG90						
	 5JUN89	22AUG90						
		24OCT88	24AUG90						
	 17NOV89	27AUG90						
		16JAN87	6SEP90						
		2JAN85	10SEP90						
		9FEB87	13SEP90						
		19OCT87	14SEP90						
		6OCT87	18SEP90						
			DATA DATE						

[illegible]

PROJECT PLOT PAGE 1 SHEET 6		ALMEGA99 FPL		TURKEY POINT NUCLEAR PLANT INTEGRATED SCHEDULE FLORIDA POWER AND LIGHT CO.		MODE T/Y/T INTERVAL: 1 YEAR(S)		TARGET SCHEDULE 30 TARG FINISH 17MAY95 TARG DATA DATE 29NOV88		RUN 2AUG90 15 - 00 PROJECT/2 8683 SCHEDULE BAR CHART	
START 23JAN84 FINISH 16AUG95 DATA DATE 28JUN 90		TARGET SCHEDULE PAGE BREAK VALUE: 5 - FPL LINE BREAK ON MRC COMMITMENT CATEGORIES		SORT BREAKS 80005 9 CUR EF							
						1989	1990	1991	1992	1993	
FPL	4 MSIV SAFETY REL AIR ACCUM SYS FPL MOD 1258	PARTIAL SATS ISSUED 5/24/89. NCR N89-0893, WHICH IS NOT AN OPERABILITY CONCERN, WILL BE COMPLETED DURING THE NEXT OUTAGE OF SUFFICIENT DURATION.		10MAY88	11JUN89			26NOV90			
	C MN CTL RM DOOR & SECURITY SYS MOD FPL MOD 1271			13JUL88				27NOV90			
	4 CHARG PMP RELIEF VLV/DRN LN SUPPT FPL MOD 1324			17OCT89				29NOV90			
	C HP WORK AREA AND N.O. WORK AREA FPL MOD 0378			18SEP89				30NOV90			
	C EDG HC TURBO/IDLE GEAR STUB SHAFT FPL MOD 0509			16MAR88				3DEC90			
	C PASS DISSOLVED H2 AND O2 MONITORS FPL MOD 1337			3APR90				3DEC90			
	3 EDG SWING SWGR 3AD FPL MOD 1178			20AUG87				10DEC90			
	4 EDG SWING SWGR 4 AD FPL MOD 1180	IMPLEMENTATION UNDER MOD #1145.		22FEB88				10DEC90			
	4 ADD'L CNTMT ELECT PENETRATIONS FPL MOD 0766	IMPLEMENTATION UNDER MOD #1145.		30MAR89				12DEC90			
	3 MG-6 RELAY REPLACEMENT FPL MOD 1353			12JAN90				15DEC90			
	4 REPLACE FARRIS RELIEF VALVES/CCW FPL MOD 0415	PARTIAL SATS ON PCM 86-238 DATED 04-07-89.		2SEP88				19DEC90			
	4 ATMOSPHERIC DUMP VLV REPLACEMENT FPL MOD 1260			3MAY88				19DEC90			
	3 REPLACE G.E. CR120BD AUX RELAYS FPL MOD 1207			10AUG87				20DEC90			
	3 CHARG PMP RELIEF VLV/DRN LN SUPPT FPL MOD 1323			17OCT89				20DEC90			
	C CHEMICAL STORAGE BLDG CENTRAL A/C FPL MOD 1202			22FEB88				27DEC90			
	4 PORV STROKE TIME ENHANCEMENT FPL MOD 1316			5DEC88				9JAN91			
	3 HIGH INITIAL RESPONSE EXCITER FPL MOD 0978			22DEC88				10JAN91			
	3 REPLACE FARRIS RELIEF VALVES/CCW FPL MOD 0414	PARTIAL SATS ON PCM 86-237 DATED 4/17/90.		22DEC88				12JAN91			
	C EOP REVIEW REV 1 FPL MOD 1355			4DEC89				17JAN91			



100

100

100

[illegible]

[illegible]

25
26
27
28
29
30
31
32
33
34
35
36
37
38
39
40
41
42
43
44
45
46
47
48
49
50
51
52
53
54
55
56
57
58
59
60
61
62
63
64
65
66
67
68
69
70
71
72
73
74
75
76
77
78
79
80
81
82
83
84
85
86
87
88
89
90
91
92
93
94
95
96
97
98
99
100



1

2

3

4

5

6

7

8

9

10

11

12

13

14

15

16

17

18

19

20

21

22

23

24

25

26

27

28

29

30

31

32

33

34

35

36

37

38

39

40

41

42

43

44

45

46

47

48

49

50

51

52

53

54

55

56

57

58

59

60

61

62

63

64

65

66

67

68

69

70

71

72

73

74

75

76

77

78

79

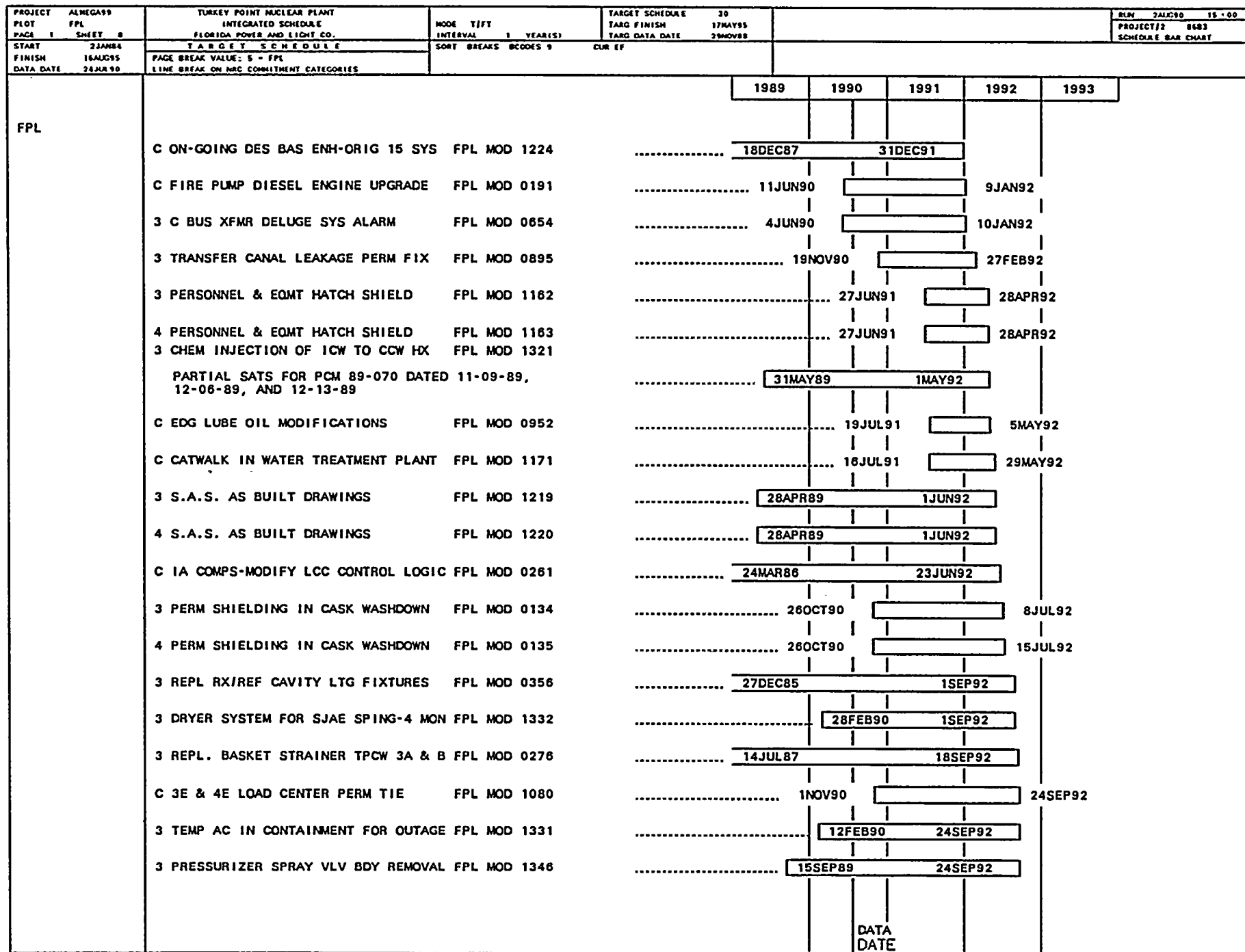
80

81

82

83

84





16.11.19

