

ACCELERATED DISTRIBUTION DEMONSTRATION SYSTEM

REGULATORY INFORMATION DISTRIBUTION SYSTEM (RIDS)

ACCESSION NBR: 9004050441 DOC. DATE: 90/03/28 NOTARIZED: NO DOCKET #
 FACIL: 50-250 Turkey Point Plant, Unit 3, Florida Power and Light C 05000250
 50-251 Turkey Point Plant, Unit 4, Florida Power and Light C 05000251

AUTH. NAME AUTHOR AFFILIATION
 HARRIS, K.N. Florida Power & Light Co.
 RECIP. NAME RECIPIENT AFFILIATION
 Document Control Branch (Document Control Desk)

SUBJECT: Forwards integrated schedule regulatory rept for Jan 1990.

DISTRIBUTION CODE: A001D COPIES RECEIVED: LTR 1 ENCL 1 SIZE: 24
 TITLE: OR Submittal: General Distribution

NOTES: .

	RECIPIENT ID CODE/NAME	COPIES LTTR ENCL	RECIPIENT ID CODE/NAME	COPIES LTTR ENCL
	PD2-2 LA	1 1	PD2-2 PD	1 1
	EDISON, G	5 5		
INTERNAL:	NRR/DET/ECMB 9H	1 1	NRR/DOEA/OTSB11	1 1
	NRR/DST 8E2	1 1	NRR/DST/SELB 8D	1 1
	NRR/DST/SICB 7E	1 1	NRR/DST/SRXB 8E	1 1
	NUDOCS-ABSTRACT	1 1	OC/LEMB	1 0
	OGC/HDS2	1 0	<u>REG FILE</u> 01	1 1
	RES/DSIR/EIB	1 1		
EXTERNAL:	LPDR	1 1	NRC PDR	1 1
	NSIC	1 1		

NOTE TO ALL "RIDS" RECIPIENTS:

PLEASE HELP US TO REDUCE WASTE! CONTACT THE DOCUMENT CONTROL DESK,
 ROOM P1-37 (EXT. 20079) TO ELIMINATE YOUR NAME FROM DISTRIBUTION
 LISTS FOR DOCUMENTS YOU DON'T NEED!

TOTAL NUMBER OF COPIES REQUIRED: LTTR 21 ENCL 19

MA-4



MAR 28 1990

L-90-114

U. S. Nuclear Regulatory Commission
Attn: Document Control Desk
Washington, D. C. 20555

Gentlemen:

Re: Turkey Point Units 3 and 4
Docket Nos. 50-250 and 50-251
Integrated Schedule Regulatory Report

Attached is the January 1990 Integrated Schedule (I/S) Regulatory Report for the Turkey Point Plant. The schedules discussed in this report reflect information updated since the May 1989 Regulatory Report which was submitted to the NRC on July 7, 1989. The changes to the schedules discussed in this report have been reviewed with the NRC Project Manager for the Turkey Point Plant in accordance with the Integrated Schedule Plan.

Should there be any questions regarding this report, please contact us.

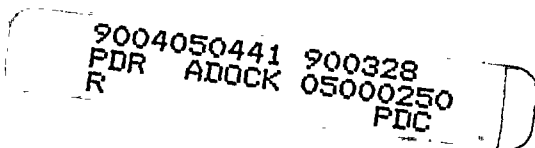
Very truly yours,

K. N. Harris
Site Vice President
Turkey Point Nuclear Plant

KNH/TCG/gp

Attachment

cc: Stewart D. Ebnetter, Regional Administrator, Region II, USNRC
Senior Resident Inspector, USNRC, Turkey Point Plant



74
Aool
111

002. 8 S 8AM

TURKEY POINT UNITS 3 AND 4
JANUARY 1990 INTEGRATED SCHEDULE

The following is a summary of the I/S modifications for the Six Month Integrated Schedule Regulatory Report.

The January 1990 Integrated Schedule is based on the following outages:

<u>OUTAGE DESCRIPTION</u>	<u>START</u>	<u>FINISH</u>	
Unit 3 Cycle 12 Refueling	02/04/90	05/19/90	*
Unit 3 Diesel Tie-in	12/09/90	10/06/91	
Unit 3 Cycle 13 Refueling	08/21/92	12/04/92	
Unit 3 Cycle 14 Refueling	04/01/94	06/03/94	
Unit 4 Cycle 13 Refueling	11/15/90	10/27/91	
Unit 4 Cycle 14 Refueling	04/01/93	06/03/93	
Unit 4 Cycle 15 Refueling	10/01/94	12/03/94	

* Based on projections by Turkey Point Management.

Changes to the Integrated Schedule since the last issue of the Regulatory Report to the NRC, May 1989 (L-89-236 dated July 7, 1989), are as follows:

MODIFICATIONS ADDED

<u>I/S #</u>	<u>DESCRIPTION</u>	<u>LIC CAT</u>
1087	S INADEQUATE SEIS QUAL OF DIAPH VLVS	FPL
1154	S FLUX MAPPING AND SEAL TABLE EVAL	I&E
1301	C CLOSED CIRCUIT TV SECURITY SYSTEM	NRR
1319	C PASS CHLORIDE ANALYZER REPLACEMENT	FPL
1320	C FLOOD PROT EDG FUEL OIL XFER PMPS	I&E
1321	3 CHEM INJECTION OF ICW TO CCW HX	FPL
1322	4 CHEM INJECTION OF ICW TO CCW HX	FPL
1329	3 NEW A/C TO ELIM 4KV BUS SFTY HZRD	FPL
1330	4 NEW A/C TO ELIM 4KV BUS SFTY HZRD	FPL
1338	3 ICW CRAWL THRU INSPECTION	FPL
1341	3 ADD RELAYS/UNDERVOLTAGE CIRCUITS	FPL
1343	C UNDERSIZE NZZL-SHELLJOINT-TNK HX	FPL
1344	S EVAL OF AIR OPERATED VALVES	FPL
1346	3 PRESSURIZER SPRAY VLV BDY REMOVAL	FPL
1347	4 PRESSURIZER SPRAY VLV BDY REMOVAL	FPL
1348	3 INSPECT/REPAIR INTAKE STRUCTURE	FPL
1349	C RELOCATE WTP PRETREATMENT SYSTEM	FPL
1350	3 SI ACCUM LVL TRANSMITTER PLATFORM	FPL
1353	3 MG-6 RELAY REPLACEMENT	FPL
1354	4 MG-6 RELAY REPLACEMENT	FPL
1355	C EOP REVIEW - REV 1	FPL

MODIFICATIONS CANCELLED

<u>I/S #</u>	<u>DESCRIPTION</u>	<u>LIC CAT</u>
17	4 RCP #2 SEAL LEAK-OFF INDICATOR	FPL
72	3 HEATER DRAIN TANK SAMPLE SYSTEM	FPL
92	3 CRDM MTR GEN SET VIBRATION MONITOR	FPL
93	4 CRDM MTR GEN SET VIBRATION MONITOR	FPL
136	C IST GAUGES/DSL OIL XFER PUMPS	FPL
159	3 SHIPPING CASK CLOSURE HEAD STAND	FPL
196	3 REMOVE ROOF ON CASK WALKDOWN	FPL
197	4 REMOVE ROOF ON CASK WALKDOWN	FPL
236	3 REACTOR CAVITY FILTER LEAD SHIELD	FPL
342 **	4 AREA RADIATION MONIT'G SYS REPL	CFO
350	3 REMOVE MNC RAD AIR MONITOR CNTRL RM	FPL
351	4 REMOVE MNC RAD AIR MONITOR CNTRL RM	FPL
360	3 REPLC STEAM FLOW XMTR PROCESS TUBE	FPL
363	3 POST ACCIDENT H2 MONITORS UPGRD	FPL
364	4 POST ACCIDENT HYDROGEN MONITOR	FPL
366	C DDPS AUXILIARY CABINET REMOVAL	FPL
391	C MONITOR CIRC WATER TEMP IN DDPS	FPL
413	C UPGRADE PH MONITOR SYSTEM AT WWTG	FPL
462	S EVAL CND SR BOOT SEAL REPLACEMENT	FPL
487	S RHR ROOM VENTILATION	FPL
497	S FSAR START TIME DESCRP/DATA VERIF	FPL
544	S AFW PP TURBINE LUBE OIL SETPTS	FPL
560	3 SUPPLY BREATHING AIR/REGULATOR VLVS	FPL
575	4 SUPPLY BREATHING AIR REGULATOR	FPL
585	S LOAD FLOW AND VOLTAGE DROP STUDY	FPL
591	C SF DEMIN BYPASS RWST RECIRC LINE	FPL
618	S ADD TO BREAKER LIST BKR TRIP SET	FPL
768	C WASTE GAS SYSTEM UPGRADE PROGRAM	FPL
802	S CONTAINMENT SPRAY PMP SUCT PRESS	FPL
818	S PROVIDE NPSH INFO ON RHR PUMPS	FPL
822	S RHR MOV 744 A & B	FPL
823	S LONG TERM ECC FAN TEST	FPL
824	S ECC EXTEND LOC LOMIT	FPL
829	S PENETR #18 ELIM ONE VLV AS CIV	FPL
830	S PENETR 27 ADD RV-6223 & SGWL AS CIV	FPL
831	S PENETR 24 CK VLV VX. ISI PROGRAM	FPL
832	S PENETR #30 CV-6165 REQ INSTR AIR	FPL
852	3 INSTL MANIPULTR CRANE AIR COMPRESSR	FPL
853	4 INSTL MANIPULTR CRANE AIR COMPRESSR	FPL
855	S EVAL DESIGN BASIS ACCIDENT HT LOAD	FPL
857	4 A&B REHEATER DRAIN TANK LEVEL CNTRL	FPL
858	3 A&B REHEATER DRAIN TANK LEVEL CNTRL	FPL
879	3 TERMNAT MODUL/FOXBORO SPEC 200 INST	FPL
880	4 TERMNAT MODUL/FOXBORO SPEC 200 INST	FPL
912	S EVAL CABINET REARRANGEMENT FOR 1A	FPL
914	S EVAL 2 FULL CAPACTY DSL COMPRESSORS	FPL
915	S EVAL 2 FULL CAPACTY DSL GENRATRS-1A	FPL
916	S EVAL INDEPENDENT SERVICE AIR	FPL
917	S IA/EVAL SFTY FUNCTNS EFFECTED EQ	FPL
918	S IA/REGULATOR ID NUMBER	FPL
921	S REVISE FSAR ON INSTRUMENT AIR	FPL

MODIFICATIONS CANCELLED (cont.)

<u>I/S #</u>	<u>DESCRIPTION</u>	<u>LIC CAT</u>
922	S REVIEW COMPRESSOR LOADING FOR I1	FPL
924	C WALKDOWN INSTRUMENT AIR SYSTEM	FPL
927	S FSAR 8.2-18A/INCPOR AIR REG SET PT	FPL
937	S EVAL PROB RISK ASSMT STDY FOR EDG	FPL
938	S REV RM VENTLATN&COMBUSTN AIR INLET	FPL
951	C EDG INSTR LIFT DEVICE @ CONTR LINE	FPL
953	C EDG ISO VLV-LUBE OIL COOLR MANIFOLD	FPL
963	3 PERM FLOW INSTR - CCW LNS - RHR HX	FPL
964	4 PERM FLOW INSTR - CCW LNS - RHR HX	FPL
1050	4 HEATER DRAIN TANK SAMPLE SYSTEM	FPL
1058	3 INSTALL SFP STORAGE BOXES	FPL
1060	4 INSTALL SFP STORAGE BOXES	FPL
1094	C UNIT AUTONOMOUS P&ID DRAWINGS	FPL
1096	C MASTER DRAWING LIST MODIFICATION	FPL
1105	C AFW PPS - GOVERNOR VLV STEM GUARDS	FPL
1113	4 CONNECT GAMMAMETRICS TO NIS REC.	FPL
1194	3 TUNNEL UNDER CONTAINMENT RAMP	FPL
1217	S PLANT OUTFALL INVESTIGATION - PTN	FPL
1225	S STUDY WTP REV OSMOSIS PRETREAT SYS	FPL
1227	C RELOCATE RMS EMERGENCY LGTS 87&88	FPL
1235	3 CONNECT GAMMAMETRICS TO NIS REC.	FPL
1277	C INTAKE TRASH STRAINER BASKET	FPL
1318	4 INSTALL TPCW AMERTAP SYSTEM	FPL

(** Mod 342 has been combined with Mod 341. The Area Radiation Monitoring System Replacement is common for both units.)

MODIFICATIONS COMPLETED

<u>I/S #</u>	<u>DESCRIPTION</u>	<u>LIC CAT</u>
25	3 ALT SHUTDN CAPABILITY APP R	FPL
77	C HYDROGEN LINE MODIFICATION	FPL
257	4 SGWL CNTMT ISOL. VLV REPLACEMENT	FPL
268	4 MSIV AIR OPERATOR BACKUP N2 SYST	FPL
274	4 REPLACE BASKET STRAINER CCW 4B	FPL
277	4 REPL BASKET STRAINER TPCW 4A & B	FPL
279	C HALON SUPPRESSION SYSTEM	FPL
353	4 SFP AIR INLET DAMPER REPLACEMENT	FPL
355	4 DEL CRDM CLR FANS AUTO EDG LOAD	CFO
396	S BOUNDARIES FOR VISUAL LEAK INSP	FPL
423	4 MAIN STM SAFETY LIFTING LEVERS	FPL
479	4 INST FLGS ON RCP SEAL LINES	FPL
513	3 INSTALL WYE STRAINERS ON IA SYS	CFO
526	3 MOV FAIL DUE TO IMPROPER SW SET'G	FPL
531	3 INSTALL CCW AMERTAP SYSTEM	I&E
588	4 INSTALL CCW AMERTAP SYSTEM	CFO
597	S EVAL LEAKING CTMT ISOL PURGE VLVS	FPL
748	4 INSP/REPR EQ RAYCHEM SPLICES/O&M	FPL
826	S REV T. SPEC TO CNTMT ISOL VLV	FPL
827	S CNTMT ISOL SYS STROKE TIME - MOV	FPL
959	4 PROTECT'V GUARD FOR MG-6 SAFGRDS	I&E

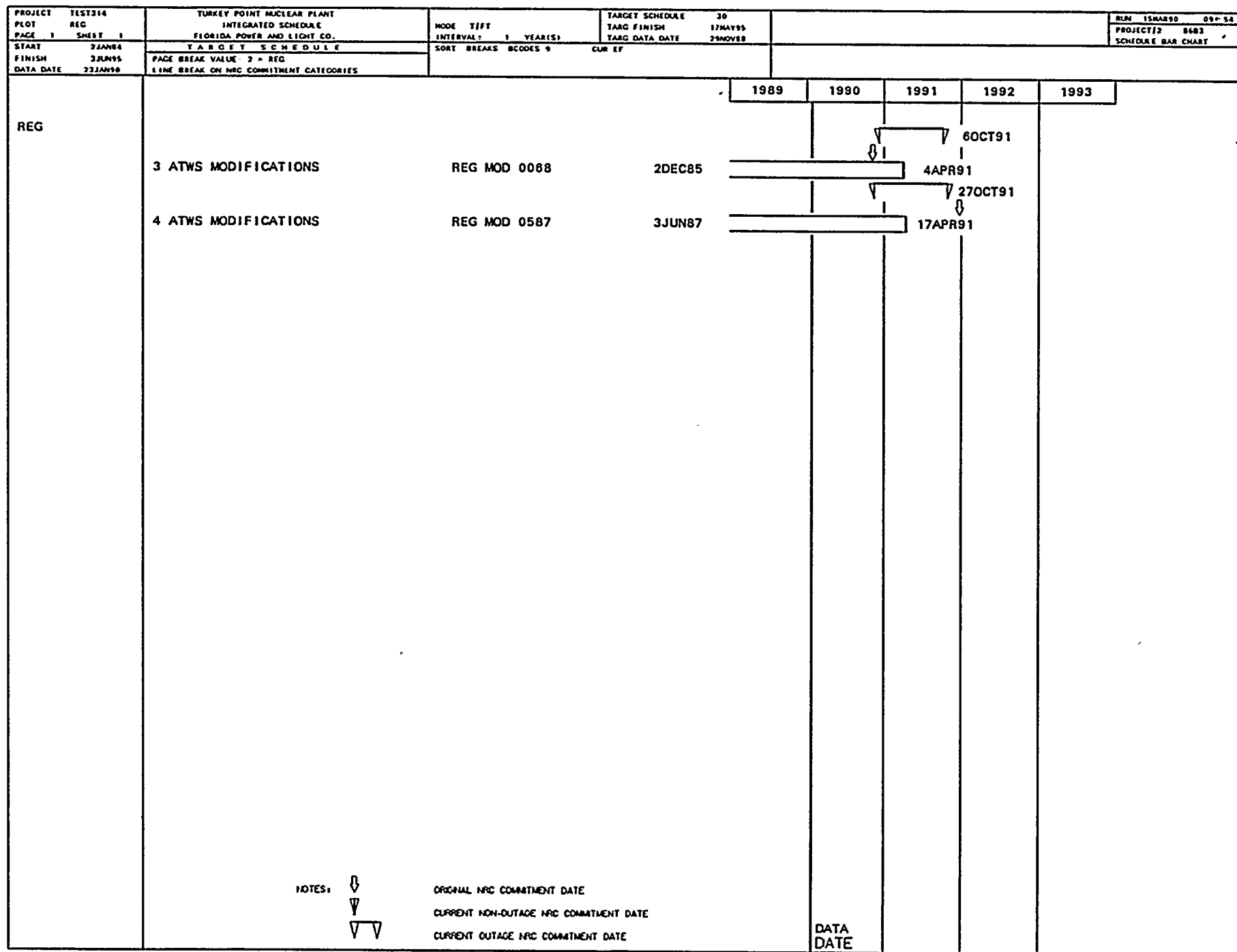
MODIFICATIONS COMPLETED (cont.)

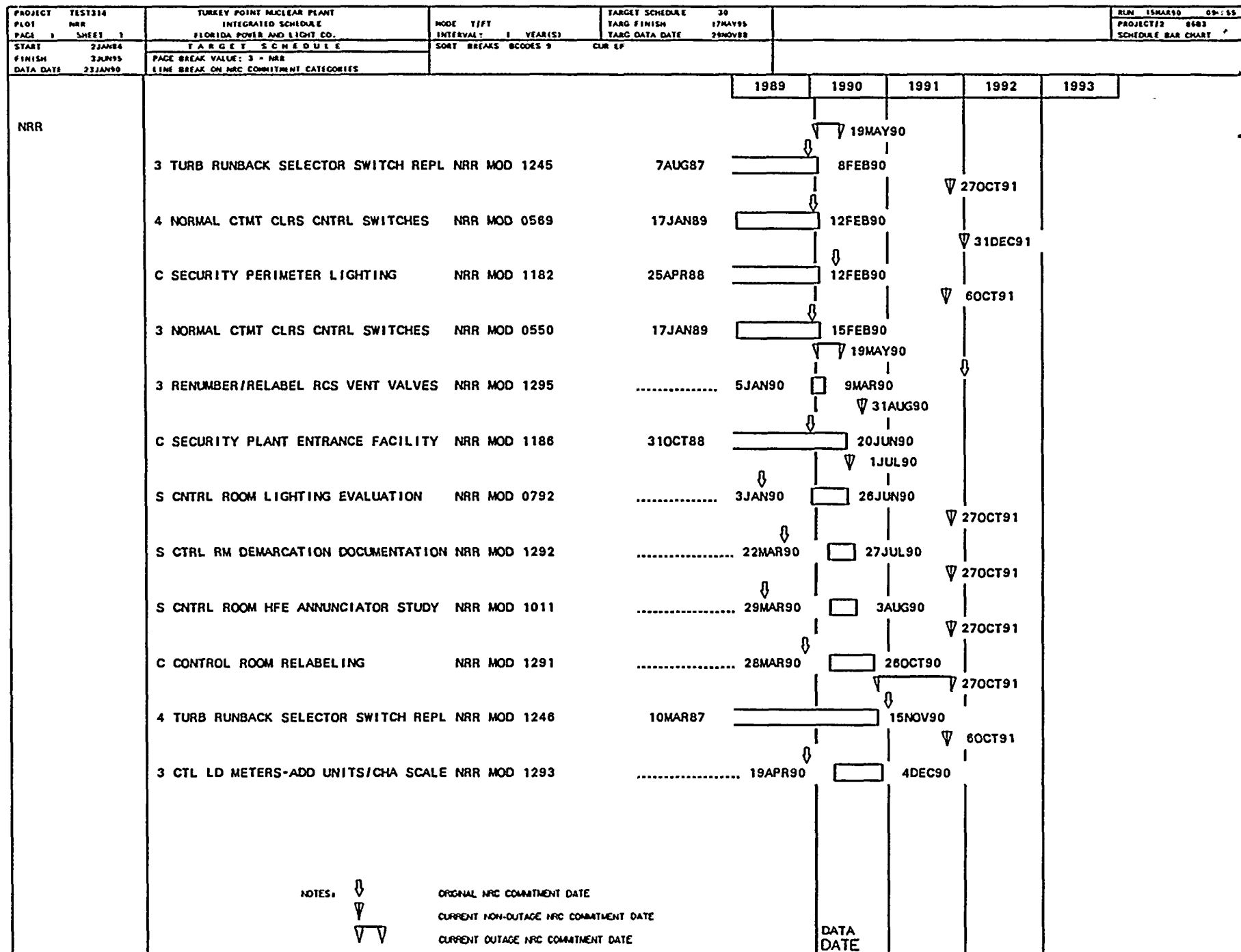
<u>I/S #</u>	<u>DESCRIPTION</u>	<u>LIC CAT</u>
965	S HFE REVW ON PCMS IMPLMNTD GT 9/85	FPL
969	4 TURBINE GENERATOR OIL SY FLUSHING	FPL
1047	4 INSTALL WYE STRAINERS ON 1A SYST	CFO
1048	4 REPLACE RPS TEST SELECTOR SWITCH	CFO
1073	4 REACTOR CAVITY SEAL RING	FPL
1082	4 RX MANIP CRANE LOAD TEST DEVICE	FPL
1098	C SEL SYS WLKDN P&ID NCRS ORIG 15	CFO
1158	4 SESR 86-067 ROSEMONT RTD'S	FPL
1208	4 REPLACE G.E. CR120BD AUX RELAYS	FPL
1222	C SEL SYS DESIGN VERIF-ORIG 15 SYS	CFO
1223	C SEL SYS DESIGN VERIF-ARMS/PRMS/NCC	CFO
1236	C EDG CLG WTR DISCH THERMOMETER	FPL
1237	4 TURBINE BLADE RING EROSION	FPL
1238	C RESOLVE NRC IDENT IEB 79-14 DISCR	I&E
1257	4 RX VESSEL HEAD LEAKAGE DET SYS	FPL
1287	S COLD OVERPRESSURE MITIGATION SYS	FPL
1299	S UPGRADE TASK ANAL FOR PRESENT EOP	FPL
1300	S HFE REVIEW OF ALT SHUTDOWN PANEL	NRR
8966	P4T11.21 U4 SAF ENGR GRP FINAL RPT	CFO
8968	P4T11.22 U4 DRAWING FOLLOWUP	CFO

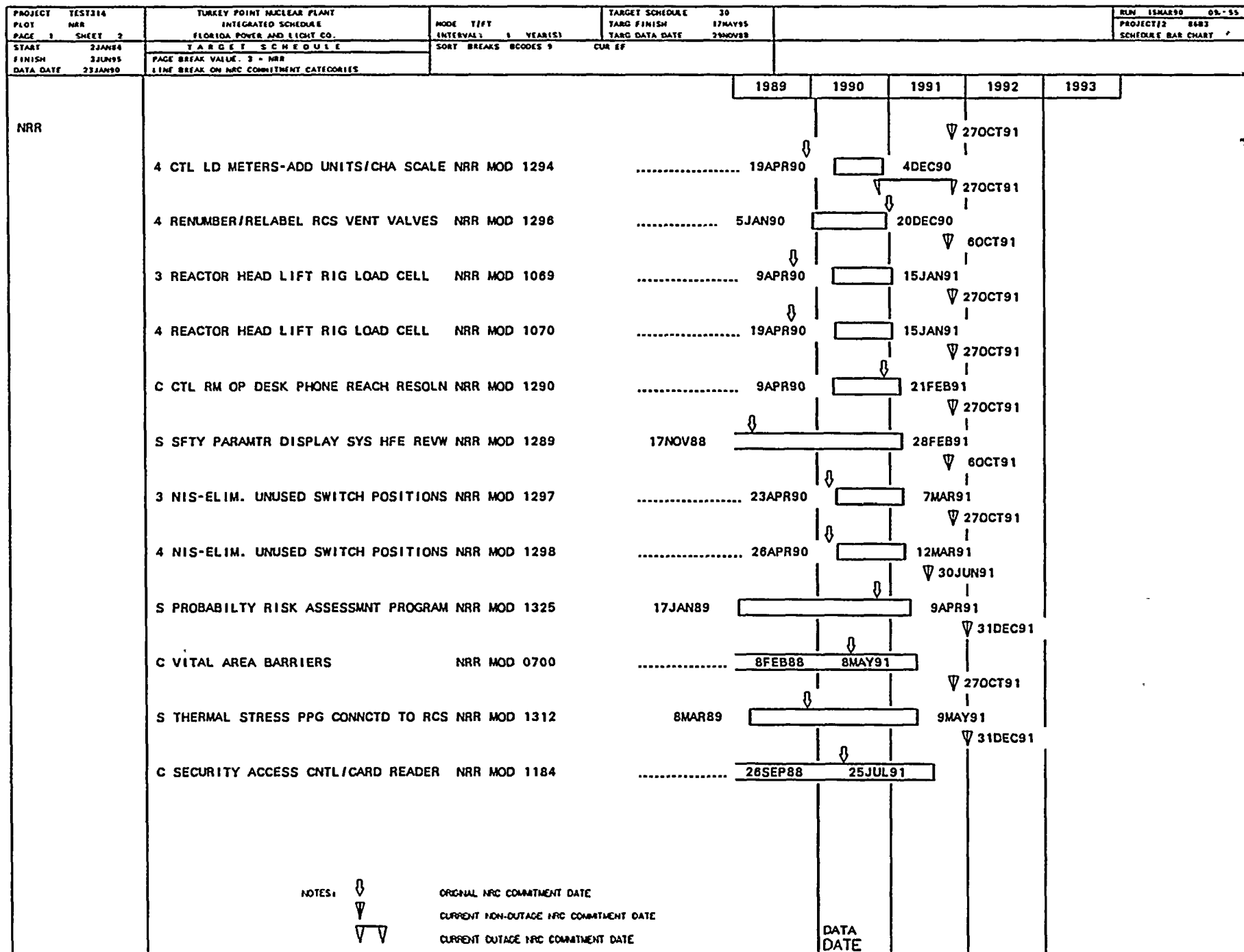
MODIFICATIONS WITH REVISED COMMITMENT CATEGORY

<u>I/S #</u>	<u>DESCRIPTION</u>	<u>LIC CAT</u>
14	C CONTROL ROOM HABITABILITY HVAC	FPL
610	C EDG STARTING AIR SYS/ADD AIR DRYER	FPL
1110	4 MOV FAIL DUE TO IMPROPER SW SETTING	FPL
1249	S MOV THERMAL OVERLOAD HTR SELECTN	FPL
1265	S BKR LIST VERIF'N WALKDOWN OF NCRS	FPL

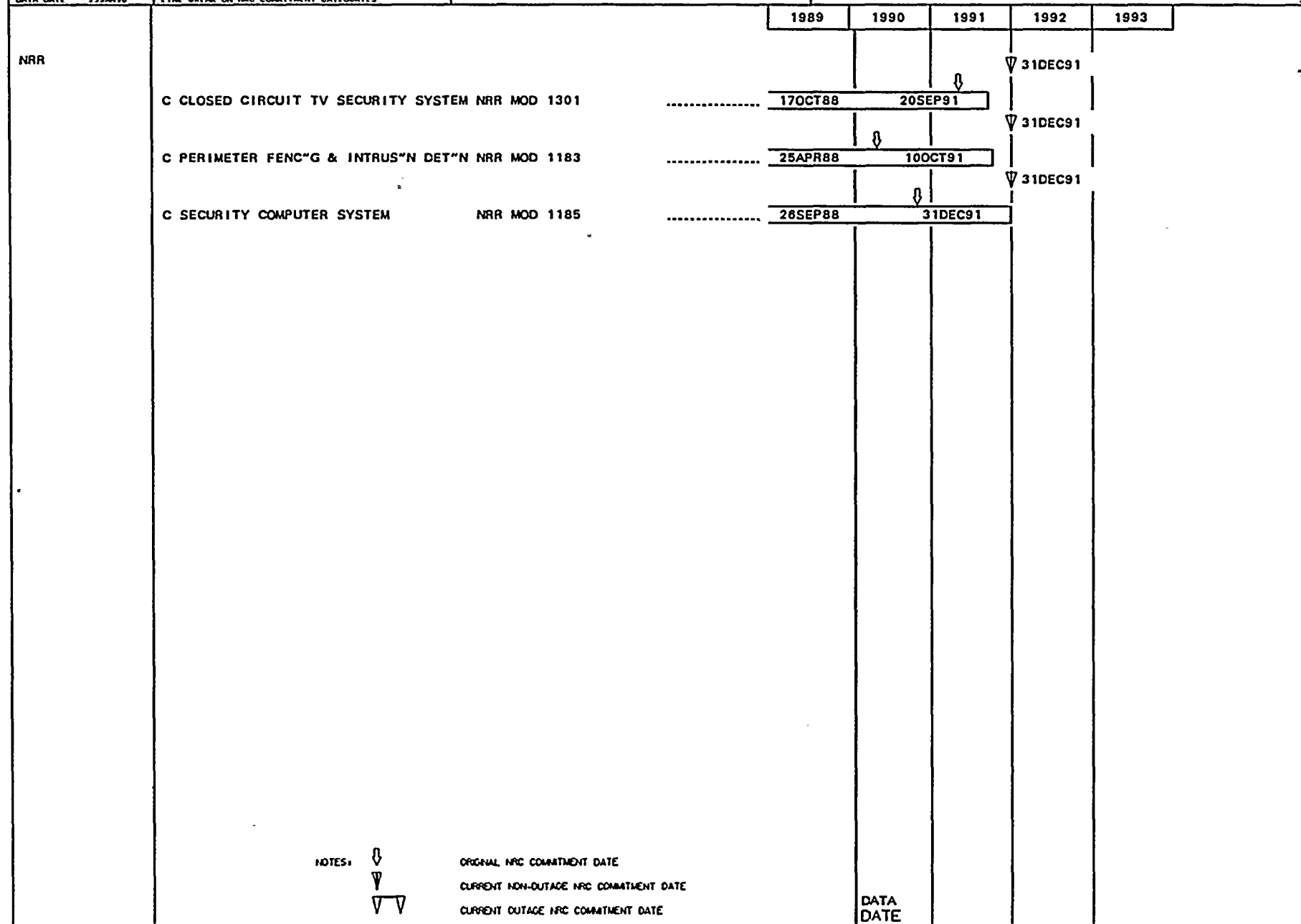
PROJECT PLOT PAGE 1 SHEET 1	TEST314 CFO	TURKEY POINT NUCLEAR PLANT INTEGRATED SCHEDULE FLORIDA POWER AND LIGHT CO.	MODE T/FT INTERVAL 1 YEAR(S)	TARGET SCHEDULE TARG FINISH TARG DATA DATE	30 17MAY95 29NOV88	BLN 15MAR90 09" 52 PROJECT/2 8683 SCHEDULE BAR CHART
START FINISH DATA DATE	2JAN84 3AUN95 23JAN90	TARGET SCHEDULE LINE BREAK ON NRC COMMITMENT CATEGORIES LINE BREAK ON CFO SUB-SYSTEM	SORT BREAKS BCODES 9	CUR EF		
CFO	POST TMI CONFIRMATORY MODIFICAT" N	C AREA RADIATION MONIT" G SYST REPL CFO MOD 0341 18AUG89			1989 1990 1991 1992 1993
	REMAINING P.E.P. SUB-TASKS	COMPLETION OF PEP/SS TASK CFO SUMMARY C SEL SYS WLKDOWN P&ID NCRS ORIG 15 CFO MOD 1098 COMPLETE PER LETTER #JPN-PTP-89-3262.	17DEC85 4JAN88			31DEC90 7NOV90
	P04-T11.20 U4 SEL SYS MODS/REPAIRS	C EDG AIR START MOTORS UPGRADE CFO MOD 0576	18JUL86			27OCT91 15JAN91
	POST PEP	3 RHR-INSTL UPGRADED 8" GLOBE VLV CFO MOD 0519 3 P&ID QC WKDOWN(ARM PRM NCC) I/CTMT CFO MOD 1042 4 RHR-INSTL UPGRADED 8" GLOBE VLV CFO MOD 0565	5MAY88 2FEB90 5FEB88			19MAY90 5MAR90 19MAY90 6APR90 27OCT91 26NOV90
NOTES:		↓ ORIGINAL NRC COMMITMENT DATE ▽ CURRENT NON-OUTAGE NRC COMMITMENT DATE ▽▽ CURRENT OUTAGE NRC COMMITMENT DATE				DATA DATE

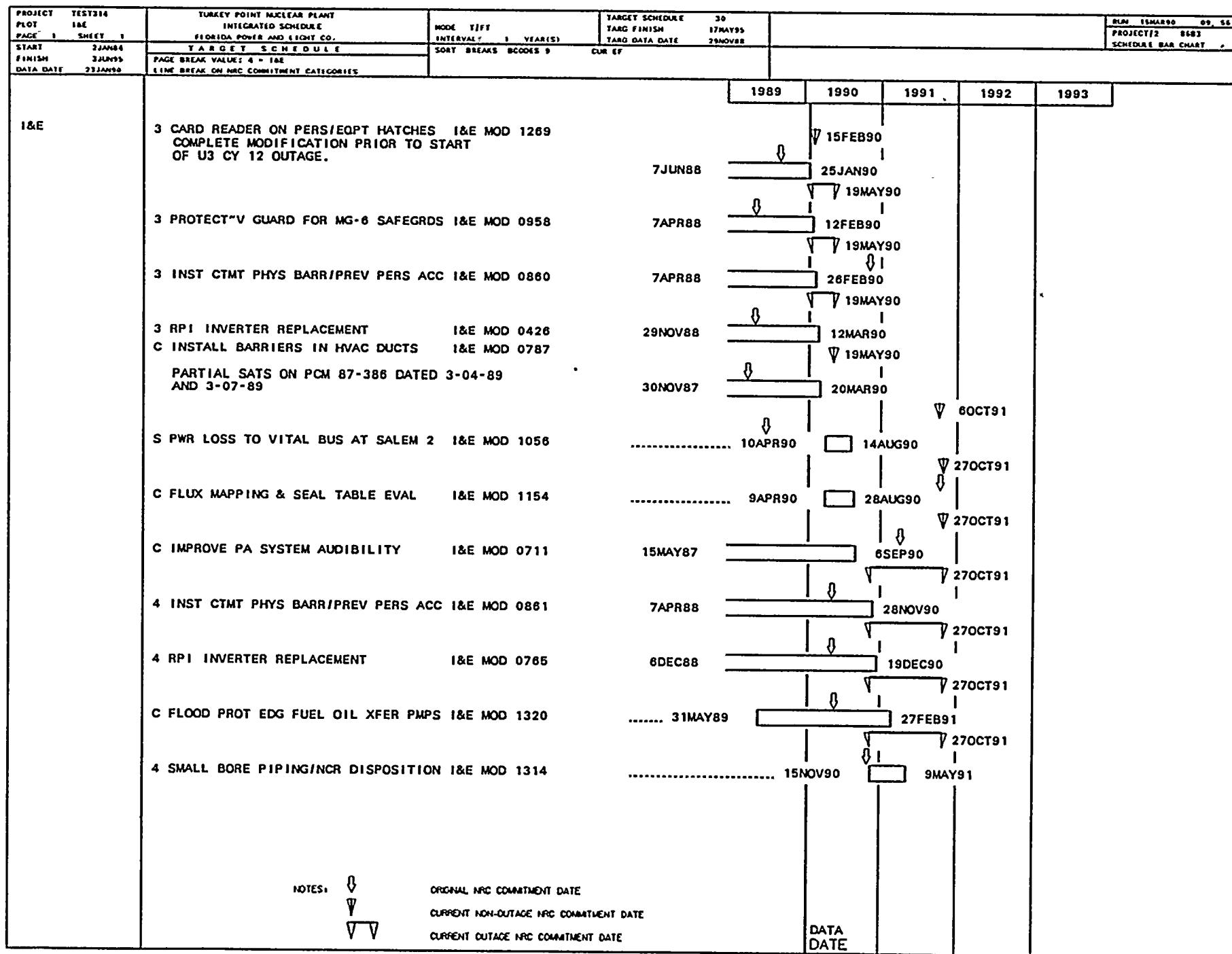






PROJECT TEST314	TURKEY POINT NUCLEAR PLANT	MODE TIFT	TARGET SCHEDULE 30	RUN 15MAR90 00:55
PLOT NRR	INTEGRATED SCHEDULE	INTERVAL 1 YEAR(S)	TARG FINISH 17MAY95	PROJECT#2 8683
PAGE 1 SHEET 3	FLORIDA POWER AND LIGHT CO.		TARG DATA DATE 29NOV88	SCHEDULE BAR CHART
START 22JAN84	TARGET SCHEDULE	SORT BREAKS BCODES 9 CUR EF		
FINISH 24JAN95	PAGE BREAK VALUE: 3 - NRR			
DATA DATE 23JAN90	LINE BREAK ON NRC COMMITMENT CATEGORIES			

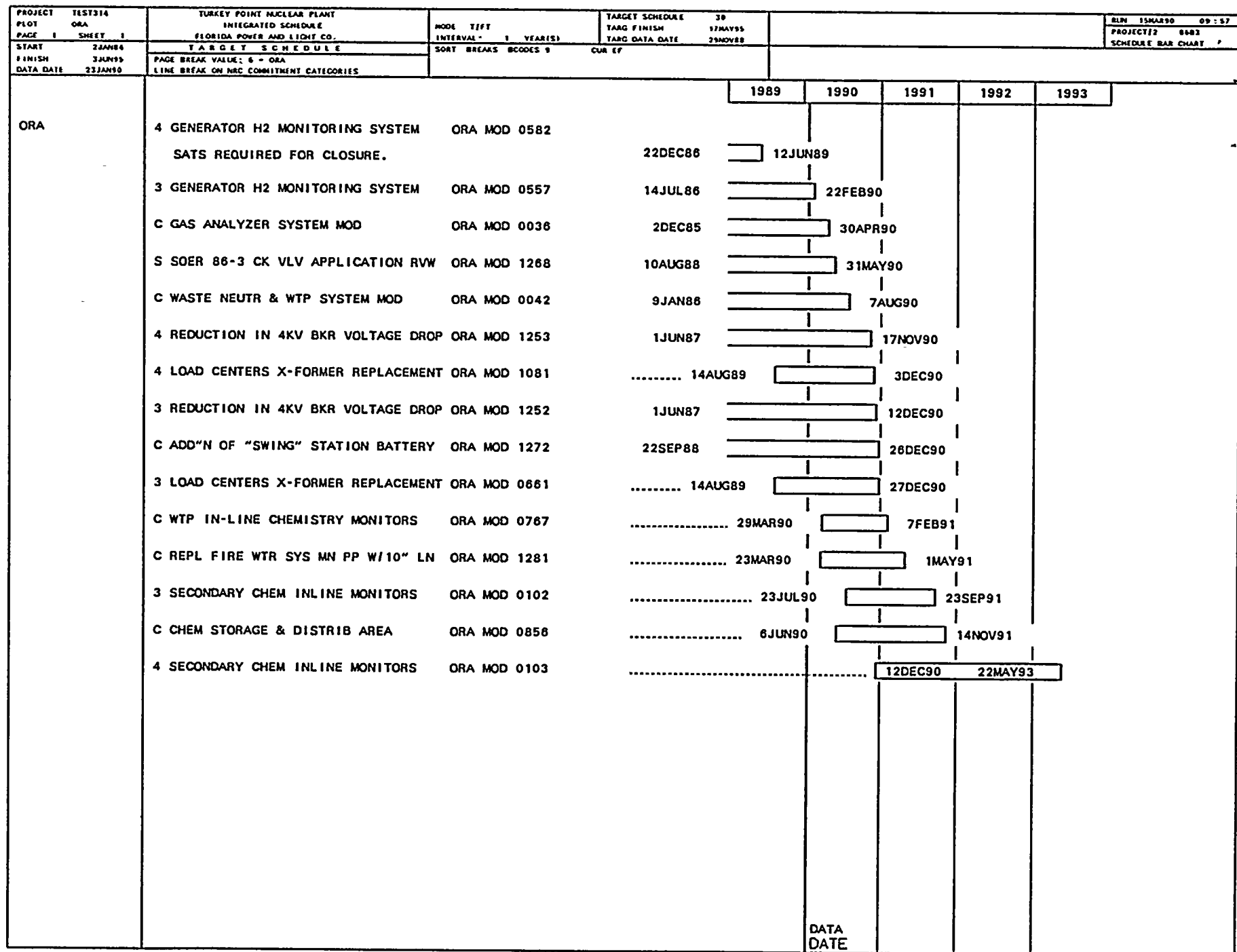




PROJECT PLOT PAGE	TEST214 I&E 1 SHEET 2	TURKEY POINT NUCLEAR PLANT INTEGRATED SCHEDULE FLORIDA POWER AND LIGHT CO.	MODE T/FT INTERVAL: 1 YEAR(S)	TARGET SCHEDULE 30 TARG FINISH 17MAY95 TARG DATA DATE 29NOV88	RLN 15MAR90 00.-56 PROJECT/2 8683 SCHEDULE BAR CHART
START FINISH DATA DATE	2JAN84 3JUN95 23JAN90	TARGET SCHEDULE PAGE BREAK VALUE: 4 - I&E LINE BREAK ON NRC COMMITMENT CATEGORIES	SORT BREAKS BCODES 9 CUR EF		

	1989	1990	1991	1992	1993
I&E	<p>3 SMALL BORE PIPING/NCR DISPOSITION I&E MOD 1313</p> <p>..... 7DEC90</p> <p>↓ 60CT91</p> <p>31MAY91</p>				
NOTES:	<p>↓ ORIGINAL NRC COMMITMENT DATE</p> <p>▽ CURRENT NON-OUTAGE NRC COMMITMENT DATE</p> <p>▽▽ CURRENT OUTAGE NRC COMMITMENT DATE</p>				

DATA DATE

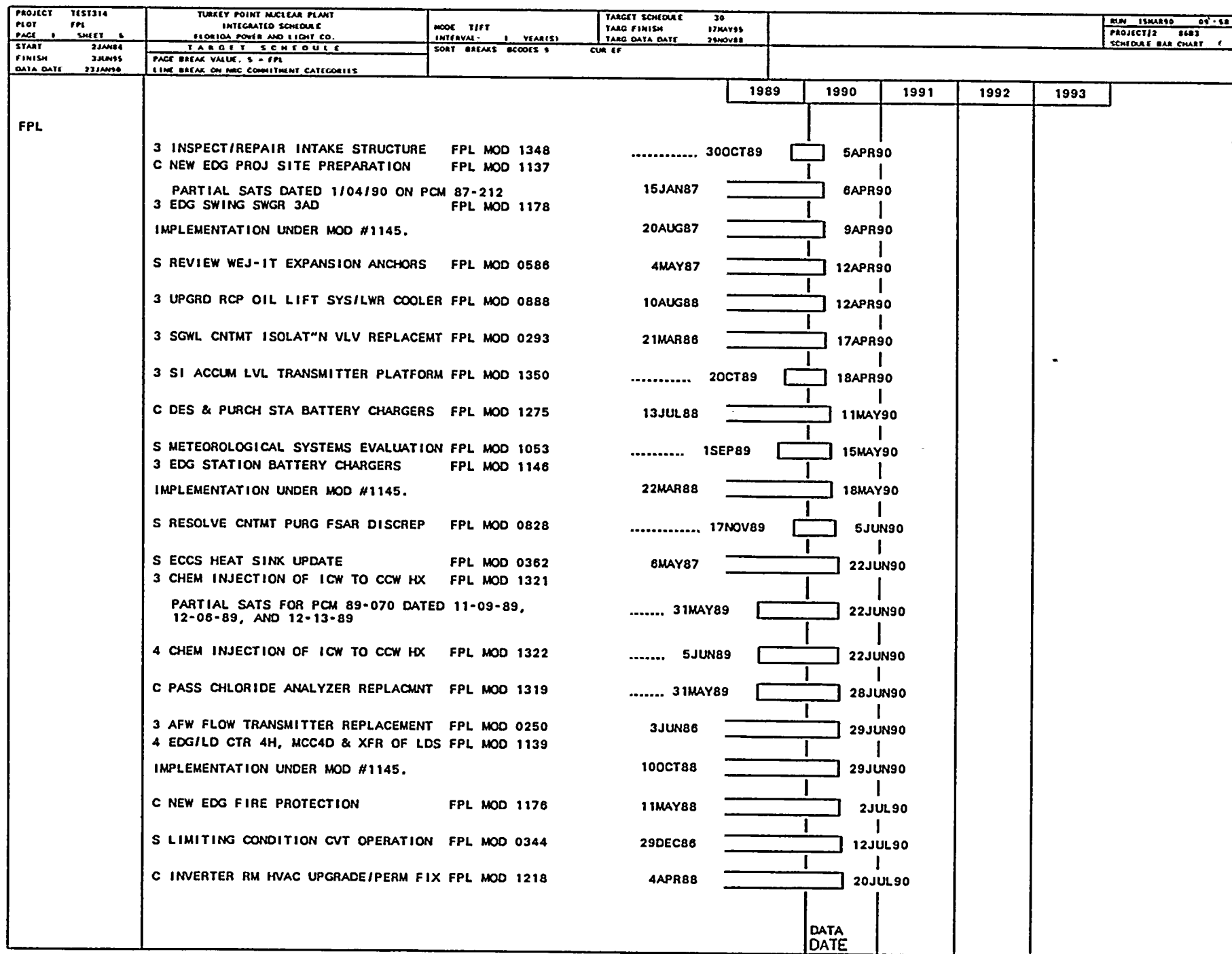


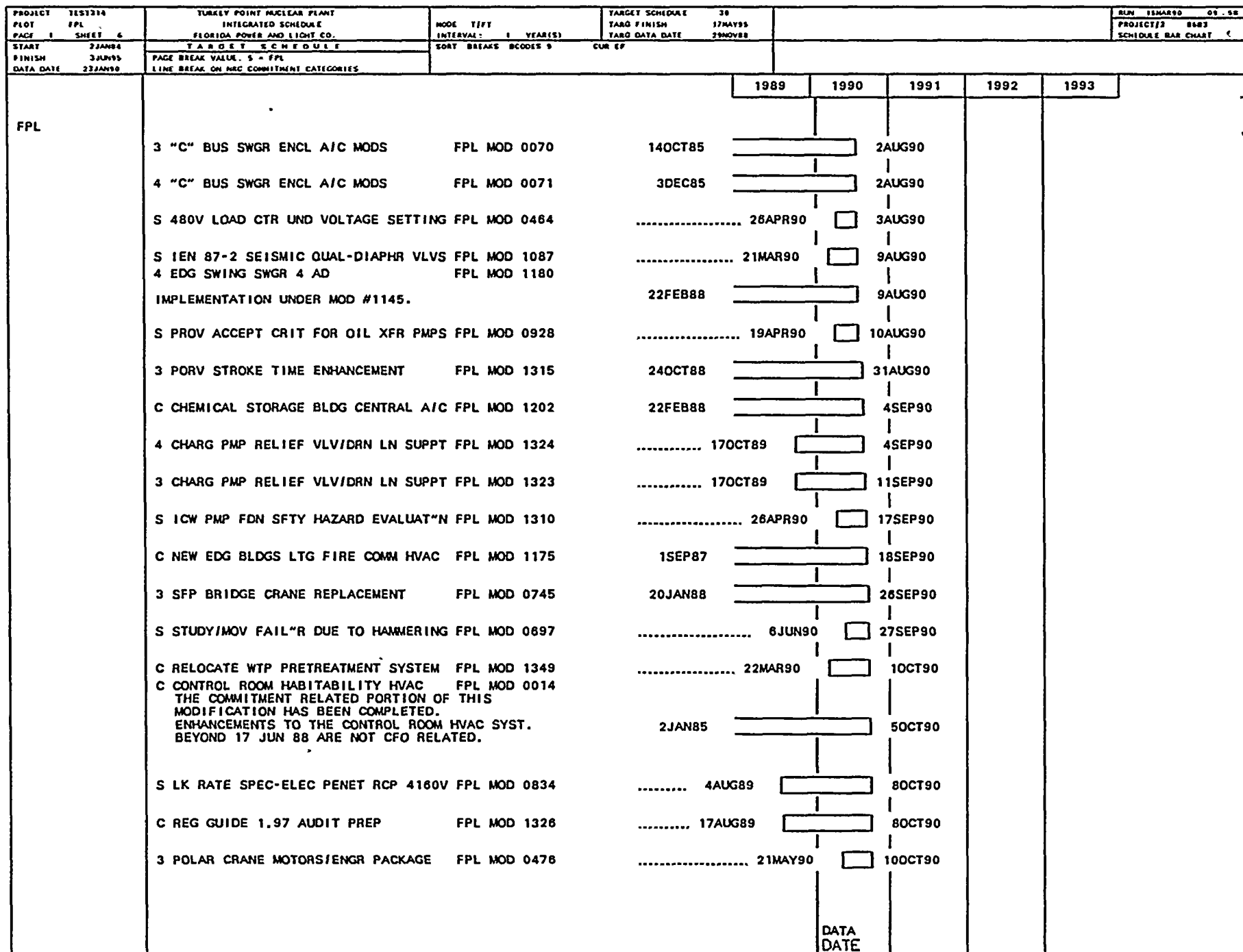
[illegible]

[illegible]

PROJECT TEST314 PLOT FPL PAGE 1 SHEET 3	TURKEY POINT NUCLEAR PLANT INTEGRATED SCHEDULE FLORIDA POWER AND LIGHT CO.	MODE T/FT INTERVAL: 1 YEAR(S)	TARGET SCHEDULE 30 TARG FINISH 17MAY95 TARG DATA DATE 29NOV88	RUN 15MAR90 08:58 PROJECT#2 8683 SCHEDULE BAR CHART		
START 2JAN84 FINISH 3JUN95 DATA DATE 23JAN90	TARGET SCHEDULE PAGE BREAK VALUE: 5 - FPL LINE BREAK ON NRC COMMITMENT CATEGORIES	SORT BREAKS BCODES 9 CUR EF				
		1989	1990	1991	1992	1993
FPL	S CNTMT ISOL SYS STROKE TIME - MOV FPL MOD 0827					
	COMPLETE PER LTR JPN-PTP-89-1836 OF 1/29/90.	9MAR88	29JAN90			
	4 MOV FAIL DUE TO IMPROPER SW SET"G FPL MOD 1110					
	THE COMMITMENT RELATED PORTION OF THIS MODIFICATION WAS COMPLETED IN MARCH 1989. THE REMAINDER OF THE WORK IS NOT I&E RELATED. PARTIAL SATS ON PCM 87-008 & 87-009 -04-MAR-89	15JAN87	11JUN89	1FEB90		
	3 REMOVAL OF TPCW AMERTAP SYSTEM FPL MOD 1317					
	TPCW AMERTAP SYSTEM WORK WAS SPLIT FROM MOD 531. TPCW AMERTAP WAS NOT NRC COMMITMENT RELATED.	18NOV86	2FEB90			
	C EOP REVIEW REV 1 FPL MOD 1355	4DEC89	2FEB90			
	C MN CTL RM DOOR & SECURITY SYS MOD FPL MOD 1271	13JUL88	5FEB90			
	3 CHARG PUMP SUCTN QUICK DISCONNECT FPL MOD 0431	22DEC86	6FEB90			
	4 CHARG PUMP SUCTN QUICK DISCONNECT FPL MOD 1255	22DEC86	6FEB90			
	3 MAIN FEED CV 2011 CLOSING TIME FPL MOD 0682	9MAR88	8FEB90			
	3 SI PMP MINI-RECIRC VLV KEYLOCK SW FPL MOD 1206	23MAR88	9FEB90			
	PARTIAL SATS ON PCM 86-181 DATED 07-28-87.					
	S NRC AUDIT PEP PROJ4/CONFIG MGT FPL MOD 1306	17MAR89	13FEB90			
	3 SESR 86-067 ROSEMONT RTD"S FPL MOD 1157	1JUN88	20FEB90			
	S ICW CK VLV OPER W/IA FAILURE FPL MOD 1283	26OCT87	21FEB90			
	3 STM GENERATOR J NOZZLE REPLACEMNT FPL MOD 1273	27JUL88	22FEB90			
	S SINGLE FAILURES IN AFW SYSTEM FPL MOD 1304	24JAN90	26FEB90			
	S MOV THERMAL OVERLOAD HTR SELECTN FPL MOD 1249					
	REF. LTR JPE-PT-P-88-1051 CONFIRMS MEETING NRC COMMIT ON JUN 20, 1988. COMPLETION OF PREP & APPVL OF STD E-3.20 MEETS NRC COMMITMENT. EP TO BE ISS SPECIFYING TOL"S FOR MOV"S. IS NOT NRC COMMITMENT RELATED.	19OCT87	25JUL89	27FEB90		
	3 PZR RLF LN SNUBBER REPLACEMENT FPL MOD 1267	5OCT88	27FEB90			
	S ECF DRAIN LOOP SEALS EVAPORATION FPL MOD 0801	9MAR88	28FEB90			
			DATA DATE			

PROJECT PLOT PAGE	TEST314 FPL SHEET 4	TURKEY POINT NUCLEAR PLANT INTEGRATED SCHEDULE FLORIDA POWER AND LIGHT CO.	MODE T/ST INTERVAL 1 YEAR(S)	TARGET SCHEDULE TARG FINISH TARG DATA DATE	30 17MAY95 29NOV88	BLN 15MAR90 05-58 PROJECT/2 8483 SCHEDULE BAR CHART 1
START FINISH DATA DATE	22JAN84 23JUN95 23JAN90	TARGET SCHEDULE PAGE BREAK VALUE: 5 = FPL LINE BREAK ON NRC COMMITMENT CATEGORIES	SORT BREAKS SCODES 9	CUR EF		
FPL						
					1989	1990
					1991	1992
					1993	
		3 SFP DEMIN RESIN FLUSH UPGRADE FPL MOD 0956	60OCT87		28FEB90	
		4 SFP DEMIN RESIN FLUSH UPGRADE FPL MOD 1155	19OCT87		28FEB90	
		3 ENHANCED RCP OIL COLL SYS FPL MOD 0120	20MAY86		2MAR90	
		3 ADD & RELOCATE AFW N2 SUPPLY FPL MOD 0215 BALANCE OF MOD WORK BEYOND THE COMMITMENT DATE OF 28 JAN 88 IS NOT COFO. REPLACE REPLACE RUPTURE DISCS WITH RELIEF VALVES. COMPLETE SATS ON PCM 85-175-2 DATED 03-28-88. COMPLETE SATS ON PCM 88-044 DATED 04-14-88.	2DEC85		2MAR90	
		C ADD"L EMERG LIGHTING FOR APP. R FPL MOD 0592 PARTIAL SATS ON PCM 86-213 (REV 6) 10-31-89	12JUN86		2MAR90	
		3 PRMS BYPASS SW"S CABNT GRD & ALRM FPL MOD 1239	22FEB88		5MAR90	
		3 MSIV AIR OPERATOR BACKUP N2 SYST FPL MOD 0267	2DEC85		13MAR90	
		3 ATMOSPHERIC DUMP VLV REPLACEMENT FPL MOD 1259	3MAY88		14MAR90	
		3 RHR PUMPS SEAL UPGRADE FPL MOD 1172	31AUG87		17MAR90	
		3 REPLACE FARRIS RELIEF VALVES/CCW FPL MOD 0414	22DEC86		19MAR90	
		4 SPENT FUEL POOL RERACKING FPL MOD 1190 PARTIAL SATS ON PCM 87-405 DATED 12-01-89	31JUL87		19MAR90	
		3 TPCW HX ISOLTN - CV2201 FAIL CLSE FPL MOD 1284	22SEP88		19MAR90	
		4 HIGH INITIAL RESPONSE EXCITER FPL MOD 0979 PARTIAL SATS ON PCM 86-201 DATED 05-22-89.	9FEB87		20MAR90	
		3 ICW CRAWL THRU INSPECT & REPAIR FPL MOD 1338 20JUL89		20MAR90	
		3 ADD"L CNTMT ELECT PENETRATIONS FPL MOD 0549	15FEB89		22MAR90	
		3 NORM CNTMT CLRS CAPACITY INCREASE FPL MOD 0902	23JAN89		27MAR90	
		3 MSR INSTRUMENTATION FPL MOD 1010	26JUN87		27MAR90	
		3 REACTOR CAVITY HANDRAIL FPL MOD 0233	2MAR87		30MAR90	
		C W.T.P. FLOW METERS UPGRADE FPL MOD 0151	11FEB86		5APR90	
					DATA DATE	

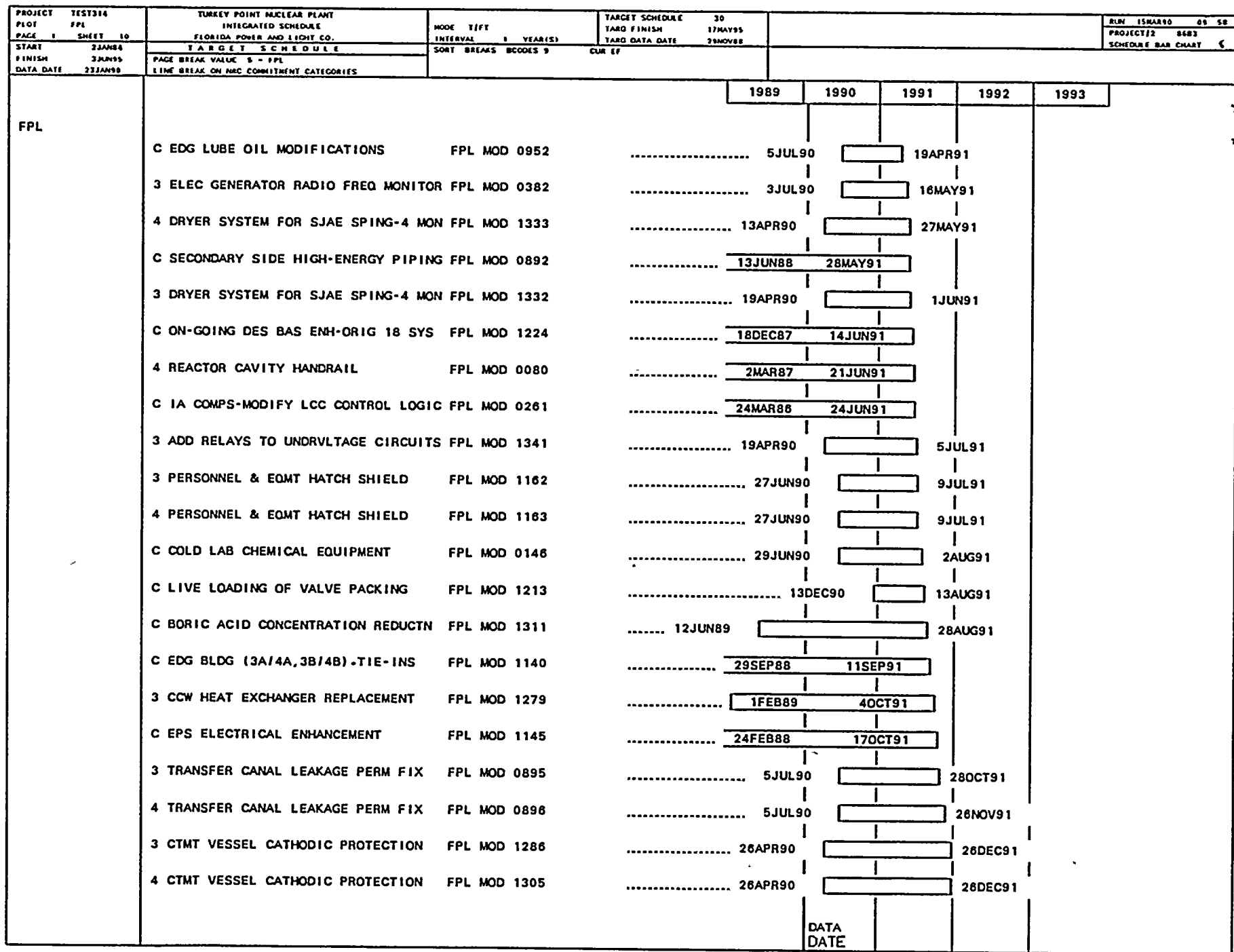




PROJECT TEST314	TURKEY POINT NUCLEAR PLANT		TARGET SCHEDULE		RUN 15MAR90 09.58	
PLOT FPL	INTEGRATED SCHEDULE		30			
PAGE 5 SHEET 7	FLORIDA POWER AND LIGHT CO.		TARG FINISH 17MAY95		PROJECT# 8687	
START 22JAN84	TARGET SCHEDULE		TARG DATA DATE 29NOV88		SCHEDULE BAR CHART (
FINISH 3JUN95	PAGE BREAK VALUE: 5 - FPL		MODE T/FT			
DATA DATE 22JAN90	LINE BREAK ON NRC COMMITMENT CATEGORIES		INTERVAL 1 YEAR(S)			
			SORT BREAKS BCODES 9		CUR EF	

PROJECT PLOT PAGE 1 SHEET 2	TEST214 FPL	TURKEY POINT NUCLEAR PLANT INTEGRATED SCHEDULE FLORIDA POWER AND LIGHT CO.	MODE T/FT INTERVAL 1 YEAR(S)	TARGET SCHEDULE 30 TARG FINISH 17MAY95 TARG DATA DATE 29NOV88	RUN 15MAR90 09-58 PROJECT/2 8483 SCHEDULE BAR CHART 6		
START FINISH DATA DATE	22JAN84 3JUN95 23JAN90	T A R G E T S C H E D U L E PAGE BREAK VALUE 5 = FPL LINE BREAK ON NRC COMMITMENT CATEGORIES	SORT BREAKS BCODES 9 CUR EF				
FPL			1989	1990	1991	1992	1993
	4 REPL RX/REF CAVITY LTG FIXTURES FPL MOD 0357	4MAR87			7DEC90		
	4 ADD"L CNTMT ELECT PENETRATIONS FPL MOD 0766 30MAR89			12DEC90		
	C UNDERSZD NZZL-SHLL JOINTS-TNK HX FPL MOD 1343 26APR90			13DEC90		
	3 MG-6 RELAY REPLACEMENT FPL MOD 1353 16MAY90			17DEC90		
	4 MG-6 RELAY REPLACEMENT FPL MOD 1354 16MAY90			17DEC90		
	3 BACKUP INSTR. AIR COMPRESSOR FPL MOD 0290	1APR86			18DEC90		
	4 C BUS XFMR DELUGE SYS ALARM FPL MOD 0653 23MAY90			18DEC90		
	4 ATMOSPHERIC DUMP VLV REPLACEMENT FPL MOD 1260	3MAY88			19DEC90		
	3 REPL RX/REF CAVITY LTG FIXTURES FPL MOD 0356	27DEC85			20DEC90		
	3 REPLACE G.E. CR120BD AUX RELAYS FPL MOD 1207	10AUG87			20DEC90		
	C EVALUATION OF AIR OPERATED VALVES FPL MOD 1344 20MAR90			2JAN91		
	C ERDADS INPUT ISOLATION ADDITIONS FPL MOD 1214						
	COMPLETE SATS ON PCM 87-310 DATED 10-31-89. THE REMAINING WORK WILL BE COMPLETED UNDER PCM # 89-378 & 89-379. 10OCT89			5JAN91		
	3 REPL. BASKET STRAINER TPCW 3A & B FPL MOD 0276	14JUL87			8JAN91		
	4:PORV STROKE TIME ENHANCEMENT FPL MOD 1316	5DEC88			9JAN91		
	3 TEMP AC IN CONTAINMENT FOR OUTAGE FPL MOD 1331 17APR89			12JAN91		
	C ADD FUSE SPEC TO BKR LIST & DWGS FPL MOD 1254 25JUN90			14JAN91		
	3 PRESSURIZER SPRAY VLV BDY REMOVAL FPL MOD 1346 15SEP89			14JAN91		
	C REMOVAL OF AUX STM SUPPLY TO AFW FPL MOD 1307 20MAR90			16JAN91		
	4 REPLACE FARRIS RELIEF VALVES/CCW FPL MOD 0415						
	PARTIAL SATS ON PCM 86-238 DATED 04-07-89.	2SEP86			18JAN91		
	4 REPL STM FLOW XMTR PROCESS TUBE FPL MOD 0361 1JUN90			23JAN91		
				DATA DATE			

PROJECT PLOT	SHEET	TURKEY POINT NUCLEAR PLANT INTEGRATED SCHEDULE FLORIDA POWER AND LIGHT CO.	MORE TIFT INTERVAL : YEAR(S)	TARGET SCHEDULE TARG FINISH TARG DATA DATE		RUN ISMAR80 67-58 PROJECT# 8683 SCHEDULE BAR CHART Q
PAGE 9	SHEET 9	T A R G E T S C H E D U L E	SORT BREAKS BCODES 9	CUR EF		
START	23JAN84	PAGE BREAK VALUE, 5 = FPL				
FINISH	30JUN95	L I N E B R E A K O N N R C C O M M I T M E N T C A T E G O R I E S				
DATA DATE	23JAN90					
FPL						
					1989	1990
					1991	1992
					1993	
		C FIRE PUMP DIESEL ENGINE UPGRADE FPL MOD 0191	19APR90	[]	29JAN91
		3 480V LOAD CENTER COOLING FACILITY FPL MOD 0086	10JAN86	[]	[]	8FEB91
		3 HIGH INITIAL RESPONSE EXCITER FPL MOD 0978	22DEC86	[]	[]	9FEB91
		S BKR LIST VERIF"N WALKDOWN OF NCRS FPL MOD 1265				
		THE COMMITMENT RELATED PORTION OF THIS MOD HAS BEEN COMPLETED PER LTR JPN-PTP-90-0190, DATED 1/19/90. THE REMAINDER OF THE WORK IS NOT CFO RELATED.				
			6FEB89	[]	[]	22JAN91 13FEB91
		4 KV BUS A/C MODIFICATION FPL MOD 1330	29DEC89	[]	13FEB91
		3 INSPECT TURB FLT NSR PIPE SUPPRTS FPL MOD 0410	6JUN90	[]	14FEB91
		C PASS DISSOLVED H2 AND O2 MONITORS FPL MOD 1337	9APR90	[]	21FEB91
		4 PROCURE & INSTALL TWO NEW EDG"S FPL MOD 1138	26FEB87	[]	[]	5MAR91
		3 PERM SHIELDING IN CASK WASHDOWN FPL MOD 0134	14MAY90	[]	6MAR91
		C WTR EQUIPT & HOTWELL SAMPLE SYST. FPL MOD 0180	21MAY90	[]	6MAR91
		3 KV BUS A/C MODIFICATION FPL MOD 1329	29DEC89	[]	7MAR91
		4 PERM SHIELDING IN CASK WASHDOWN FPL MOD 0135	16MAY90	[]	8MAR91
		4 RELOCATE FM-113 MAG FLOW CONVERTER FPL MOD 0869	23MAY90	[]	15MAR91
		C RCP VIBRATION SYSTEM FPL MOD 1067	24MAY90	[]	25MAR91
		4 INSPECT TURB FLT NSR PIPE SUPPRTS FPL MOD 0411	23MAY90	[]	28MAR91
		3 INST FLGS ON RCP SEAL LINES FPL MOD 0478	13JUN90	[]	9APR91
		C CATWALK IN WATER TREATMENT PLANT FPL MOD 1171	24MAY90	[]	9APR91
		3 BYPASS RTD ELIMINAT"N MODIFICAT"N FPL MOD 0616	16JAN90	[]	11APR91
		4 BYPASS RTD ELIMINAT"N MODIFICAT"N FPL MOD 0617	16JAN90	[]	11APR91
		4 PRESSURIZER SPRAY VLV BDY REMOVAL FPL MOD 1347	6JUN90	[]	12APR91
					DATA DATE	



[illegible]