

## REGULATORY INFORMATION DISTRIBUTION SYSTEM (RIDS)

ACCESSION NBR: 8907130214 DOC. DATE: 89/07/07 NOTARIZED: NO DOCKET #  
 FACIL: 50-250 Turkey Point Plant, Unit 3, Florida Power and Light C 05000250  
 50-251 Turkey Point Plant, Unit 4, Florida Power and Light C 05000251

AUTH. NAME: WOODY, C.O. AUTHOR AFFILIATION: Florida Power & Light Co.  
 RECIP. NAME: RECIPIENT AFFILIATION: Document Control Branch (Document Control Desk)

SUBJECT: Forwards 6-month integrated schedule regulatory rept.

DISTRIBUTION CODE: A001D COPIES RECEIVED: LTR 1 ENCL 1 SIZE: 27  
 TITLE: OR Submittal: General Distribution

NOTES: *RECEIVED BY [illegible] ACTION SYS*

	RECIPIENT ID CODE/NAME	COPIES LTTR ENCL	RECIPIENT ID CODE/NAME	COPIES LTTR ENCL
	PD2-2 LA	1 1	PD2-2 PD	1 1
	EDISON, G	5 5		
INTERNAL:	NRR/DEST/ADS 7E	1 1	NRR/DEST/CEB 8H	1 1
	NRR/DEST/ESB 8D	1 1	NRR/DEST/ICSB	1 1
	NRR/DEST/MTB 9H	1 1	NRR/DEST/RSB 8E	1 1
	NRR/DOEA/TSB 11	1 1	NUDOCS-ABSTRACT	1 1
	OC/LEMB	1 0	OGC/HDS2	1 0
	REG FILE 01	1 1	RES/DSIR/EIB	1 1
EXTERNAL:	LPDR	1 1	NRC-PDR	1 1
	NSIC	1 1		

## NOTE TO ALL "RIDS" RECIPIENTS:

PLEASE HELP US TO REDUCE WASTE! CONTACT THE DOCUMENT CONTROL DESK,  
 ROOM P1-37 (EXT. 20079) TO ELIMINATE YOUR NAME FROM DISTRIBUTION  
 LISTS FOR DOCUMENTS YOU DON'T NEED!

TOTAL NUMBER OF COPIES REQUIRED: LTTR 22 ENCL 20

*m/ly*

R  
I  
D  
S  
/  
A  
D  
D  
S  
  
R  
I  
D  
S  
/  
A  
D  
D  
S

THE  
OF THE  
IN THE  
OF THE  
OF THE



JULY 7 1989

L-89-236

U. S. Nuclear Regulatory Commission  
Attn: Document Control Desk  
Washington, D. C. 20555

Gentlemen:

Re: Turkey Point Units 3 and 4  
Docket Nos. 50-250 and 50-251  
Integrated Schedule Regulatory Report

Attached is the 6-month Integrated Schedule (I/S) Regulatory Report for the Turkey Point Plant. The schedules discussed in this report reflect information updated since the last report to the NRC dated December 27, 1988 (L-88-551). The changes to the schedules discussed in this summary report have been reviewed with the NRC Project Manager for the Turkey Point Plant in accordance with the Integrated Schedule Plan.

The completion of Category A I/S Mod 0068, Unit 3 ATWS Modifications, has been advanced to the Unit 3 Diesel Tie-In Outage scheduled to begin in January 1991.

Should there be any questions regarding this report, please contact us.

Very truly yours,

C. O. Woody  
Acting Senior Vice President - Nuclear

COW/TCG/gp

Attachment

cc: Stewart D. Ebnetter, Regional Administrator, Region II,  
USNRC  
Senior Resident Inspector, USNRC, Turkey Point Plant

8907130214 890707  
PDR ADCK 05000250  
R PDC

1000

1000

1000

1000

ATTACHMENT

Turkey Point Units 3 and 4  
Integrated Schedule  
Six-Month Summary Report  
May 1989 Integrated Schedule

The May 1989 Integrated Schedule (IS) is based on refueling and maintenance outages as follows:

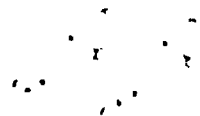
OUTAGE DESCRIPTION	START	FINISH	NOTES
Unit 3 Short Notice	10/01/88	06/20/89	*
Unit 3 Cycle 12 Refueling	02/15/90	05/30/90	**
Unit 3 Diesel Tie-In	01/15/91	06/30/91	***
Unit 3 Cycle 13 Refueling	01/01/92	04/15/92	
Unit 3 Cycle 14 Refueling	10/01/93	12/03/93	
Unit 4 Cycle 12 Refueling	01/15/91	06/30/91	**
Unit 4 Cycle 13 Refueling	10/01/92	12/03/92	
Unit 4 Cycle 14 Refueling	04/01/94	06/03/94	

\* Revised Based On Current Progress  
\*\* Based On Projections By Turkey Point Management  
\*\*\* Estimated

Changes to the Integrated Schedule since the last issue to the NRC, November 1988 (L-88-551 dated December 27, 1988), are summarized as follows:

NRC Modifications with End Dates Beyond Their Committed Dates  
(Changes since March IS)

I/S #	Description	NRC CAT.	REASON
14	C Control Room Habitability HVAC	CFO	Committed Portion Complete
576	C EDG Air Start Motors Upgrade	CFO	NRC Approval Obtained
1098	C Sel Sys Wlkdn P&ID NCRS Orig 15	CFO	NRC Approval Obtained
700	C Vital Area Barriers	NRR	Security Project
787	C Install Barriers in HVAC Ducts	NRR	Security Project
792	S Cntrl Room Lighting Evaluation	NRR	Resource Availability
1011	S Cntrl Room HFE Annunciator Study	NRR	Resource Availability
1069	3 Reactor Head Lift Rig Load Cell	NRR	Resource Availability
1070	4 Reactor Head Lift Rig Load Cell	NRR	Resource Availability



1183	C	Perimeter Fenc'g & Intrus'n Det'n	NRR	Security Project
1184	C	Security Access Cntl/Card Reader	NRR	Security Project
1186	C	Security Plant Entrance Facility	NRR	Security Project
1289	S	Sfty Paramtr Display Sys Hfe Revw	NRR	Progress Update
1291	C	Control Room Relabeling	NRR	Resource Availability
1292	S	Ctrl Rm Demarcation Documentation	NRR	Resource Availability
1293	3	Ctl Ld Meters-Add Units/Cha Scale	NRR	Resource Availability
1294	4	Ctl Ld Meters-Add Units/Cha Scale	NRR	Resource Availability
1295	3	Renumber/Relabel Rcs Vent Valves	NRR	Resource Availability
1296	4	Renumber/Relabel Rcs Vent Valves	NRR	Resource Availability
1297	3	Nis-Elim. Unused Switch Positions	NRR	Resource Availability
1298	4	Nis-Elim. Unused Switch Positions	NRR	Resource Availability
1325	S	Probability Risk Assessmnt Program	NRR	Progress Update
531	3	Install CCH Amertap System	I&E	Committed Portion Complete
1056	S	Pwr Loss to Vital Bus At Salem 2	I&E	Resource Availability
1249	S	MOV Thermal Overload Htr Selectn	I&E	Committed Portion Complete

#### Modifications Added

<u>I/S #</u>		<u>Description</u>	<u>LIC.</u> <u>CAT.</u>
902	3	Normal Containment Coolers Capacity Increase	FPL
1284	3	TPCW HX Isolation - CV2201 Fail Close	FPL
1285	4	TPCW HX Isolation - CV2201 Fail Close	FPL
1306	S	NRC Audit PEP Project/Configuration Management	FPL
1311	C	Boric Acid Concentration Reduction	FPL
1312	S	Thermal Stress Piping Connected To RCS	NRR
1313	3	Small Bore Piping/NCR Disposition	FPL
1314	4	Small Bore Piping/NCR Disposition	FPL
1315	3	Porv Stroke Time Enhancements/OMS	FPL
1316	4	Porv Stroke Time Enhancements/OMS	FPL
1317	3	Install TPCW Amertap System	FPL
1318	4	Install TPCW Amertap System	FPL
1323	3	Charging Pump Relief Valve/Drainline Support	FPL
1324	4	Charging Pump Relief Valve/Drainline Support	FPL
1325	S	Probabilistic Risk Assessment Program	NRR
1331	3	Temporary AC In Containment For Outage	FPL
1332	3	Dryer System For SJAE Sping4 Monitor	FPL
1333	3	Dryer System For SJAE Sping4 Monitor	FPL

#### Modifications Completed

<u>I/S #</u>		<u>Description</u>	<u>LIC.</u> <u>CAT.</u>
69	C	Computer Room Fire Detection	FPL
87	C	Breathing Air Compressor	FPL
111	S	ICW Demand Flow Analysis	FPL
334	S	Power Plant Flooding from Internal Sources	ORA
385	4	SI Mini Recirculation Valve Replacement	CFO
387	3	Control Switch For CV3722 & CV2913	NRR
388	4	Control Switch For CV3722 & CV2913	NRR
390	4	Rewire Limit Switch For MOV 750, 751	FPL
392	C	Cable Spread Room Drains	FPL
428	4	Pzr Heater AC Power Control	CFO





508	S Review Non-Emergency Trips Ser 25-85	ORA
511	C Identify Extraneous IA Cross-Connections	CFO
513	3 Install WYE Strainers on IA Sys	CFO
561	C Breathing Air Compressor Water Softener	FPL
603	4 SFP Cooling System Seismic Modification	NRR
672	S PRA Advisability Study	FPL
677	C Whole Body Counter Permanent Installation	FPL
703	C Control Bldg Roof Handrail Installation	FPL
713	4 Enhanced RCP Oil Collection System	FPL
810	S Potential For High Containment Temperature	FP
909	S Amend FSAR/ICW Maximum Inlet Temperature	FPL
939	S Fuel Storage, Handling and Water Removal	FPL
1040	4 P&ID QC Walkdown (ARM, PRM, NCC) I/CTMT	CFO
1043	4 Small Piping Walkdown Fnct I/C (ARM, PRM, NCC)	CFO
1044	C Small Piping Walkdown Fnct O/C (ARM, PRM, NCC)	CFO
1045	3 Small Piping Walkdown Fnct I/C (ARM, PRM, NCC)	CFO
1047	4 Install Wye Strainers on IA Syst	CFO
1093	4 Open & Close IA Piping For QC Insp	FPL
1209	3 Containment Tendon Surveillance	REG
1210	4 Containment Tendon Surveillance	REG
1240	4 PRMS Bypass Switches Cabinet Ground & Alarm	FPL
1257	4 RX Vessel Head Leakage Detection System	FPL
1308	3 Pressurizer PORV Instrument Air Line/Valve Relocate	FPL
8993	P9T24 PEP-Enhance Materials Management System	CFO

Modifications Deleted

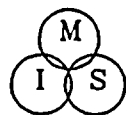
<u>I/S #</u>	<u>Description</u>	<u>LIC. CAT.</u>
174	3 Low TAVG Set Point Interlock Mod	FPL
175	4 Low TAVG Set Point Interlock Mod	FPL
498	S Tech Spec Rev GL-84-15	FPL
521	3 RHR Pump Anchors	FPL
567	4 RHR Pump Anchors	FPL
619	S C-Bus Relay Protection MFW Eval	FPL
776	3 Charging Pump Vents/Stabilizer Fill Valve	FPL
793	3 Corrosion Of 480V AC-MCC3E	FPL
794	4 Corrosion Of 480V AC-MCC3E	FPL
908	S Eval CCH Hx Basket Strainer Nozzle Loads	FPL
910	S TPCW Walkdown and Load Study	FPL
919	S Review IA Compressor Service Life	FPL
925	C Relocate Inverter Transfer Central Line	FPL
930	S Inc Amb Temp Eff/Clg Sys Acc Criteria	FPL
946	S Add Pressure Gauge To Penetrations (JPN-PTPN-88-2250/2281)	FPL
950	C EDG Upgrade Airstart Wye Strainer	FPL
1165	C "B" EDG Starting Air Tank PI Isolation	FPL
1203	4 Charging Pump Vents/Stabilizer Fill Valve	FPL
1261	3 Replace Extraction Steam CS Piping With Cr Moly	FPL
1309	4 Pressurizer PORV Instrument Air Line/Valve Relocate	FPL

Modifications With Revised Commitment Category

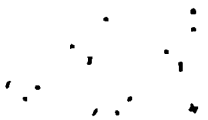
<u>I/S #</u>	<u>Description</u>	<u>LIC. CAT.</u>
1313	3 Small Bore Piping/NCR Disposition	I&E
1314	4 Small Bore Piping/NCR Disposition	I&E

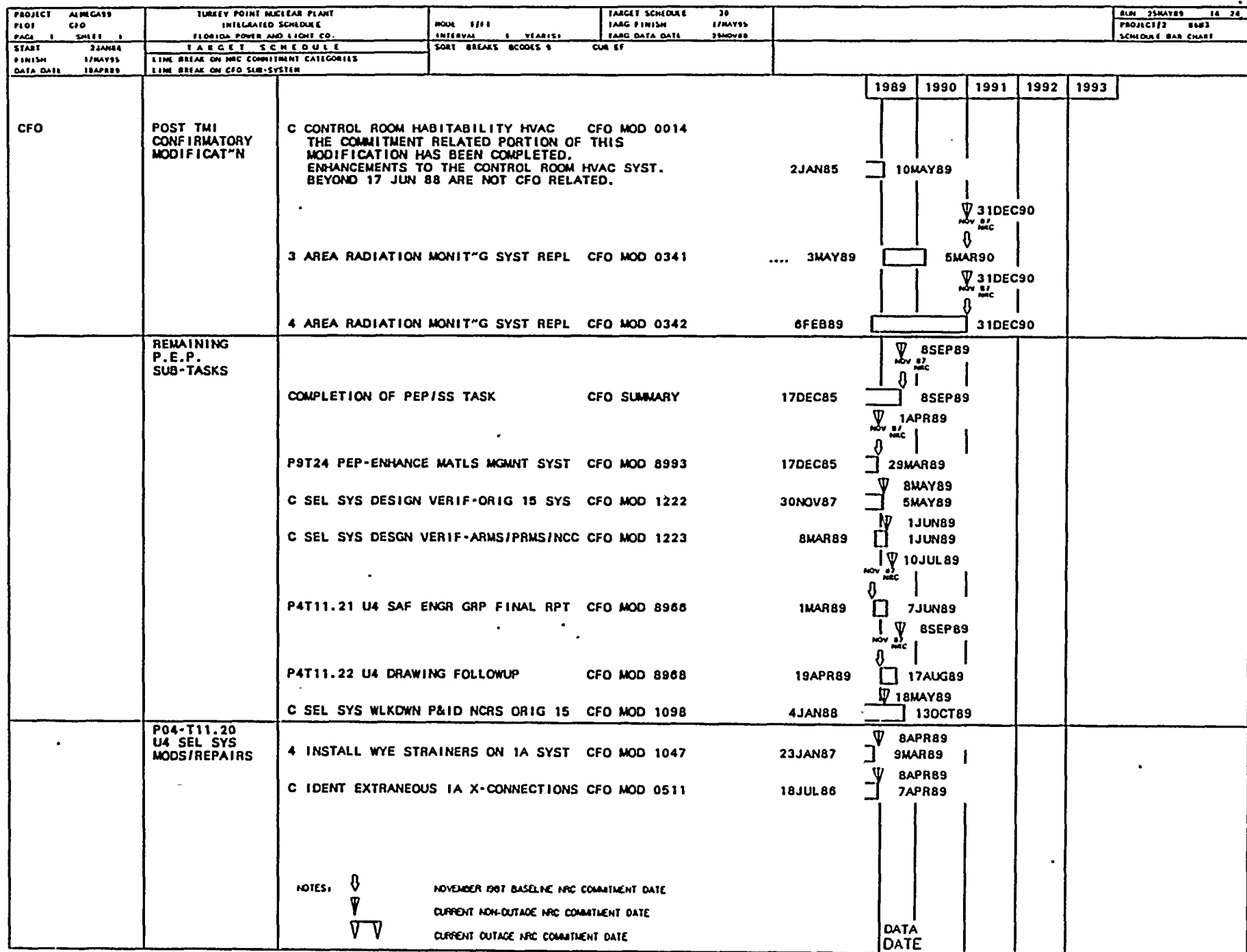
FLORIDA POWER  
AND  
LIGHT COMPANY  
  
INTEGRATED SCHEDULE

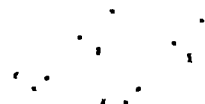
TURKEY POINT  
NUCLEAR POWER PLANT  
  
REGULATORY REPORT  
  
MAY 1989

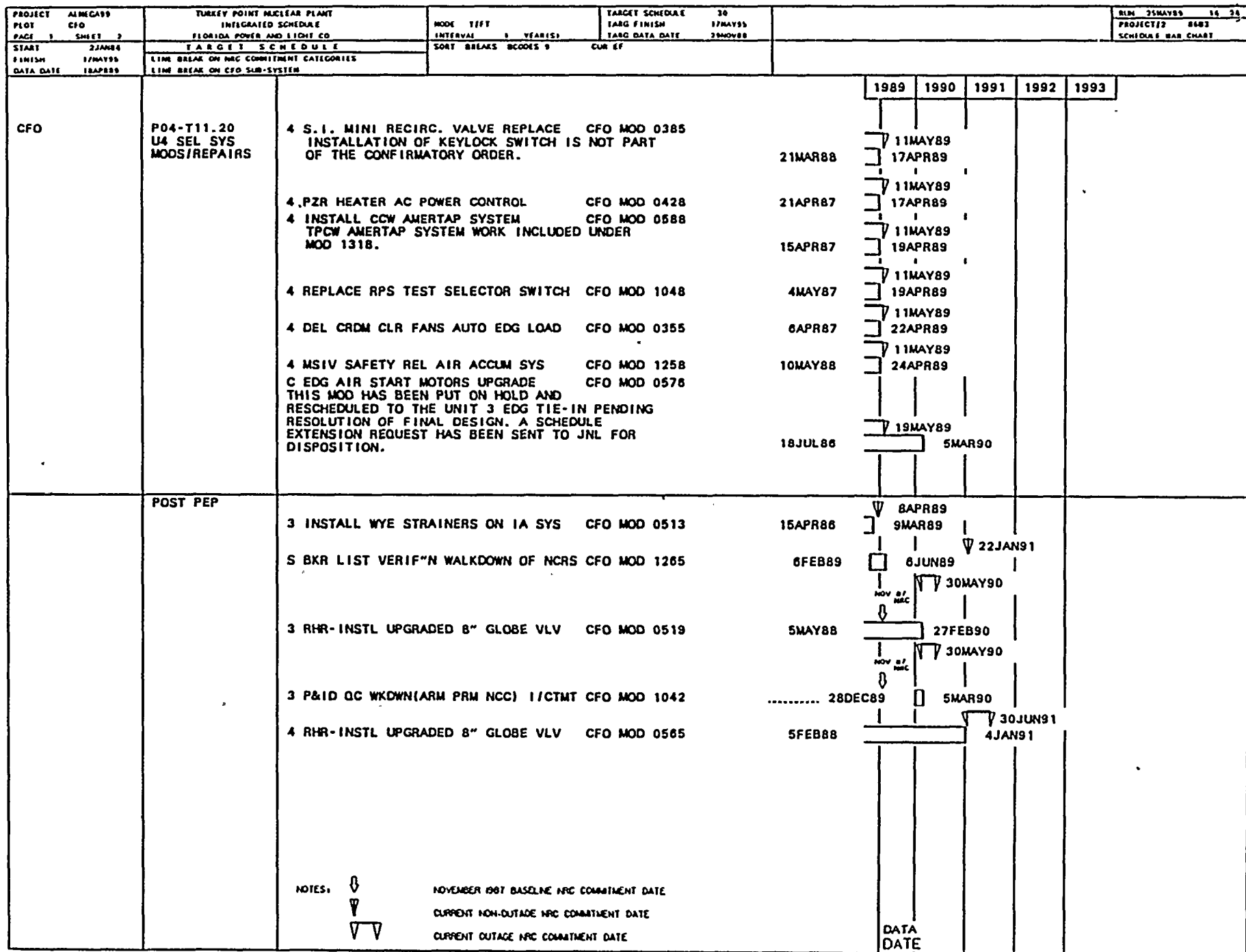


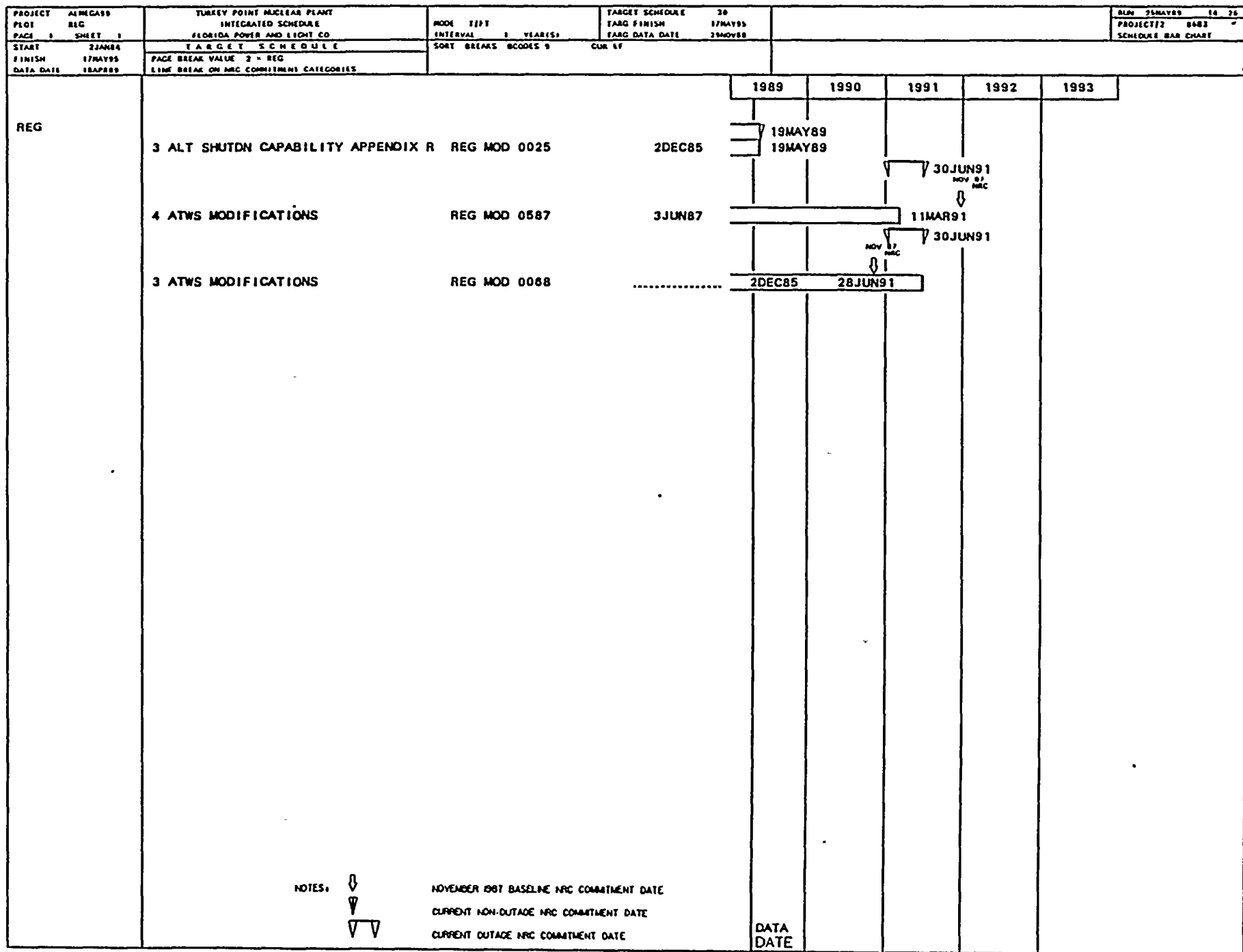
MANAGEMENT  
INFORMATION  
SYSTEMS

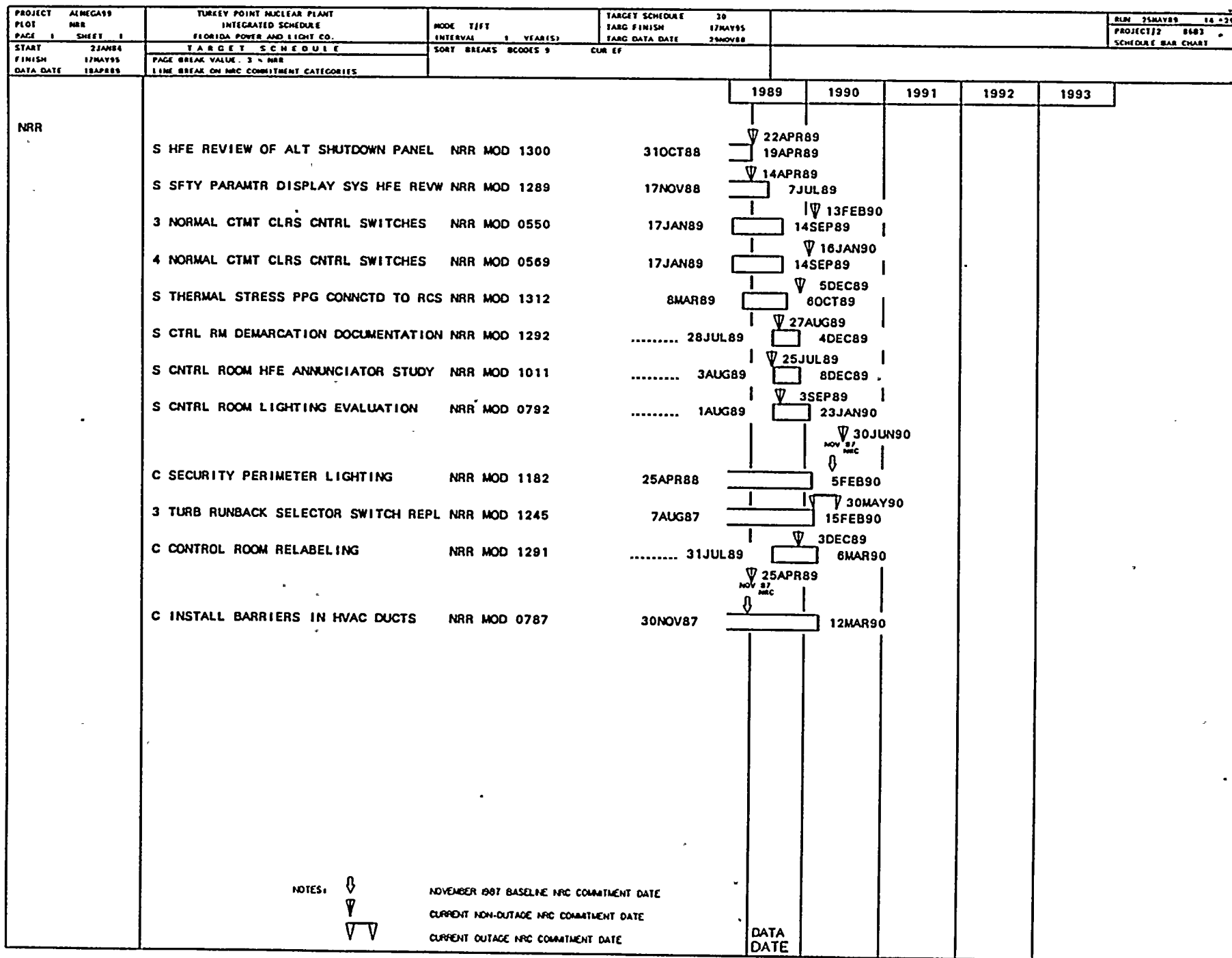




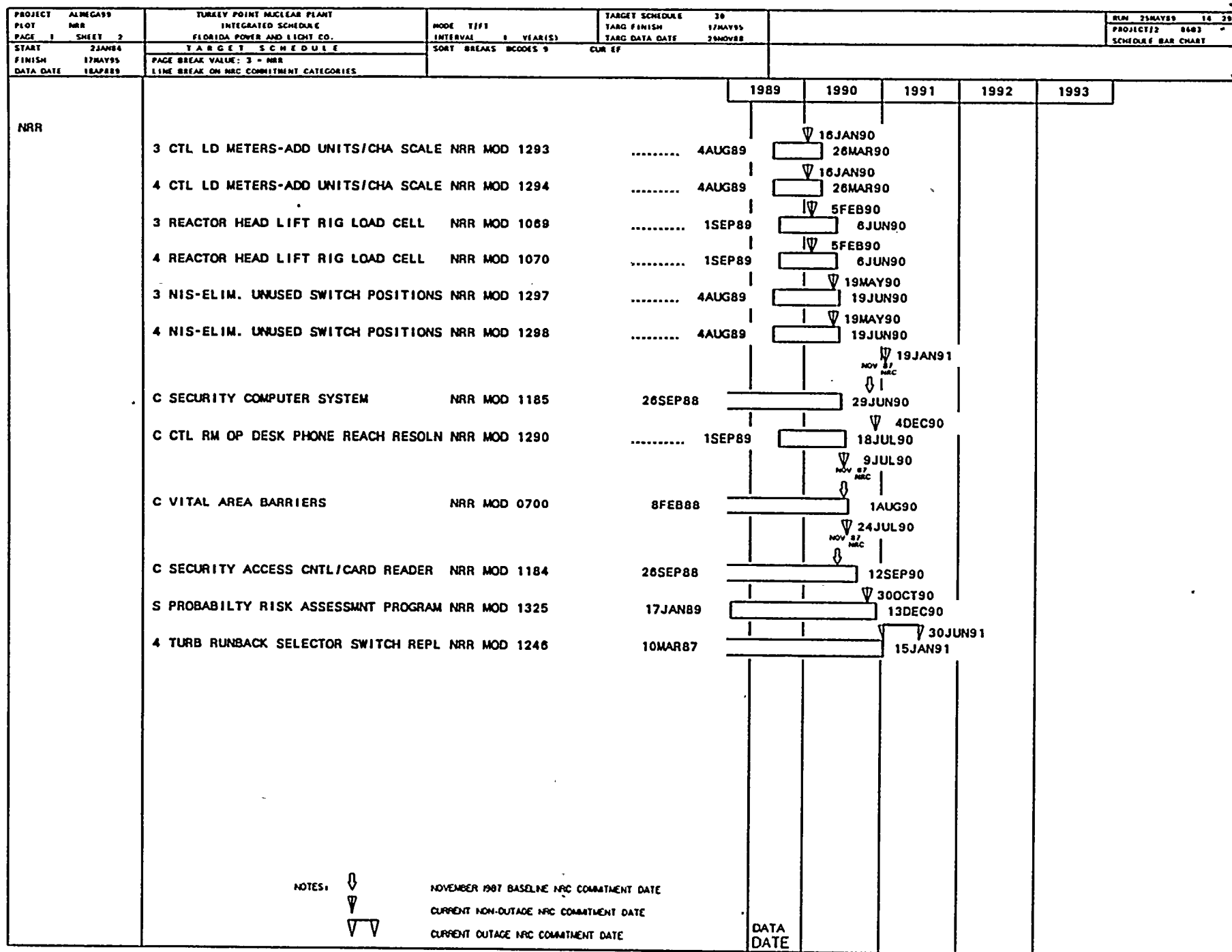


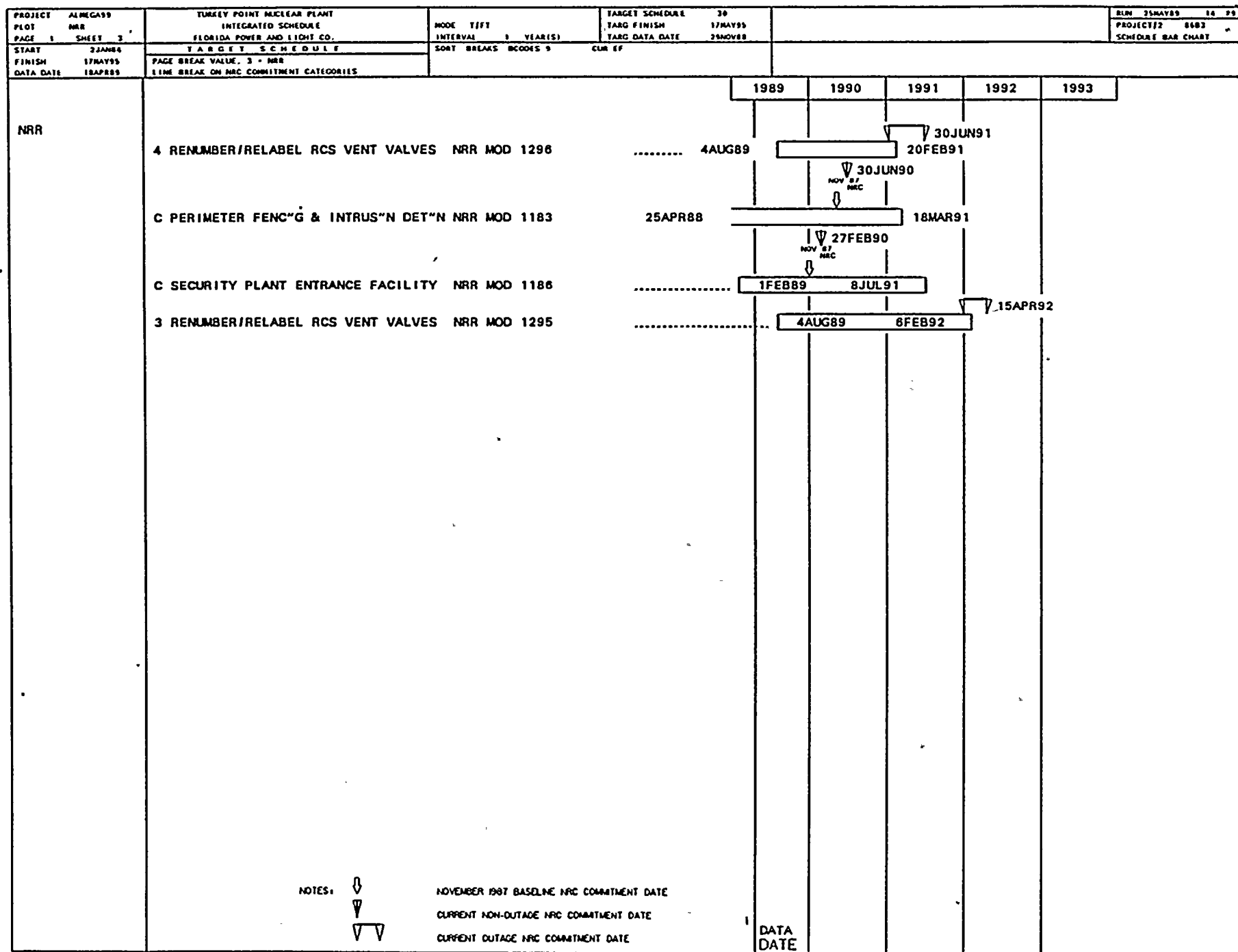




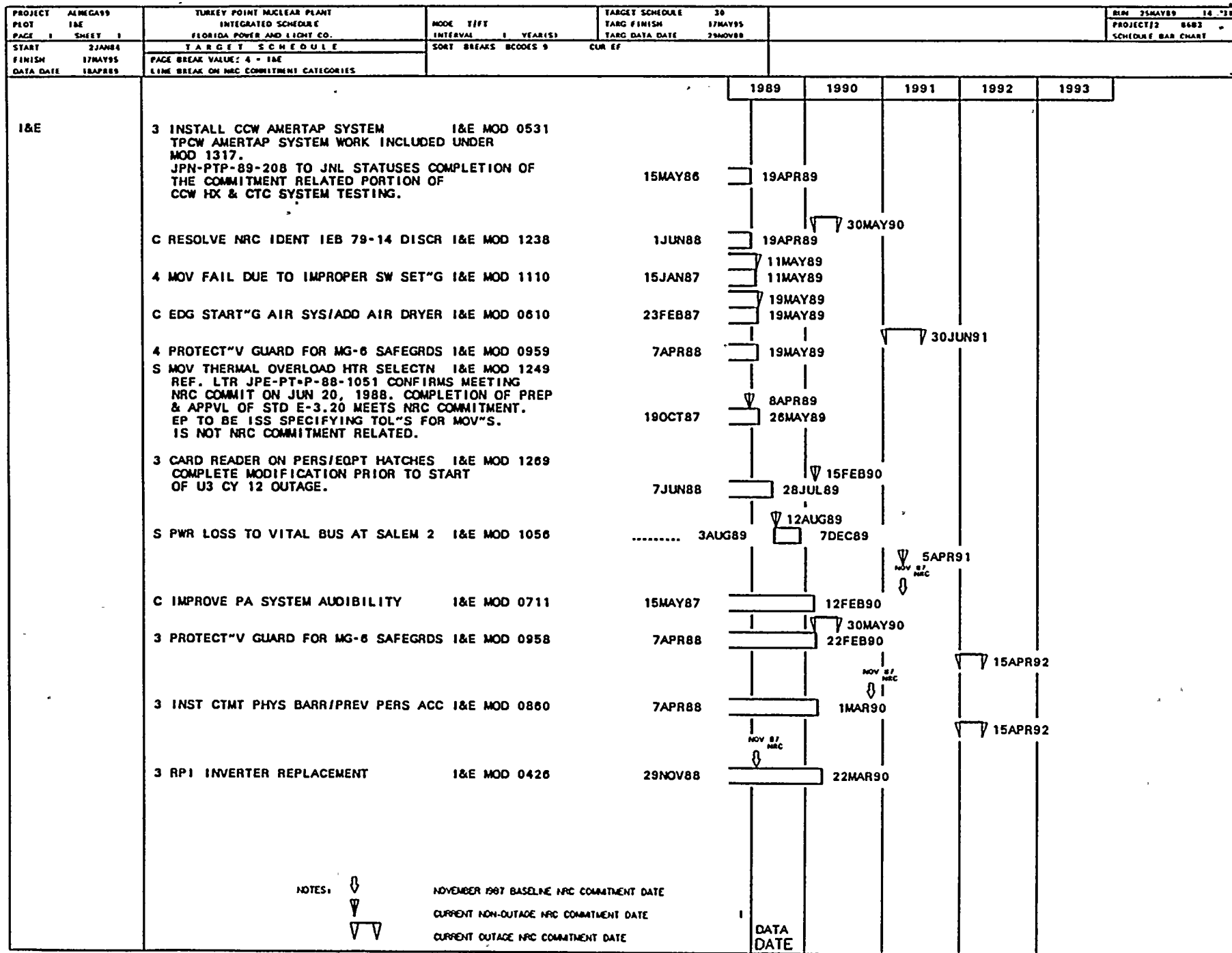


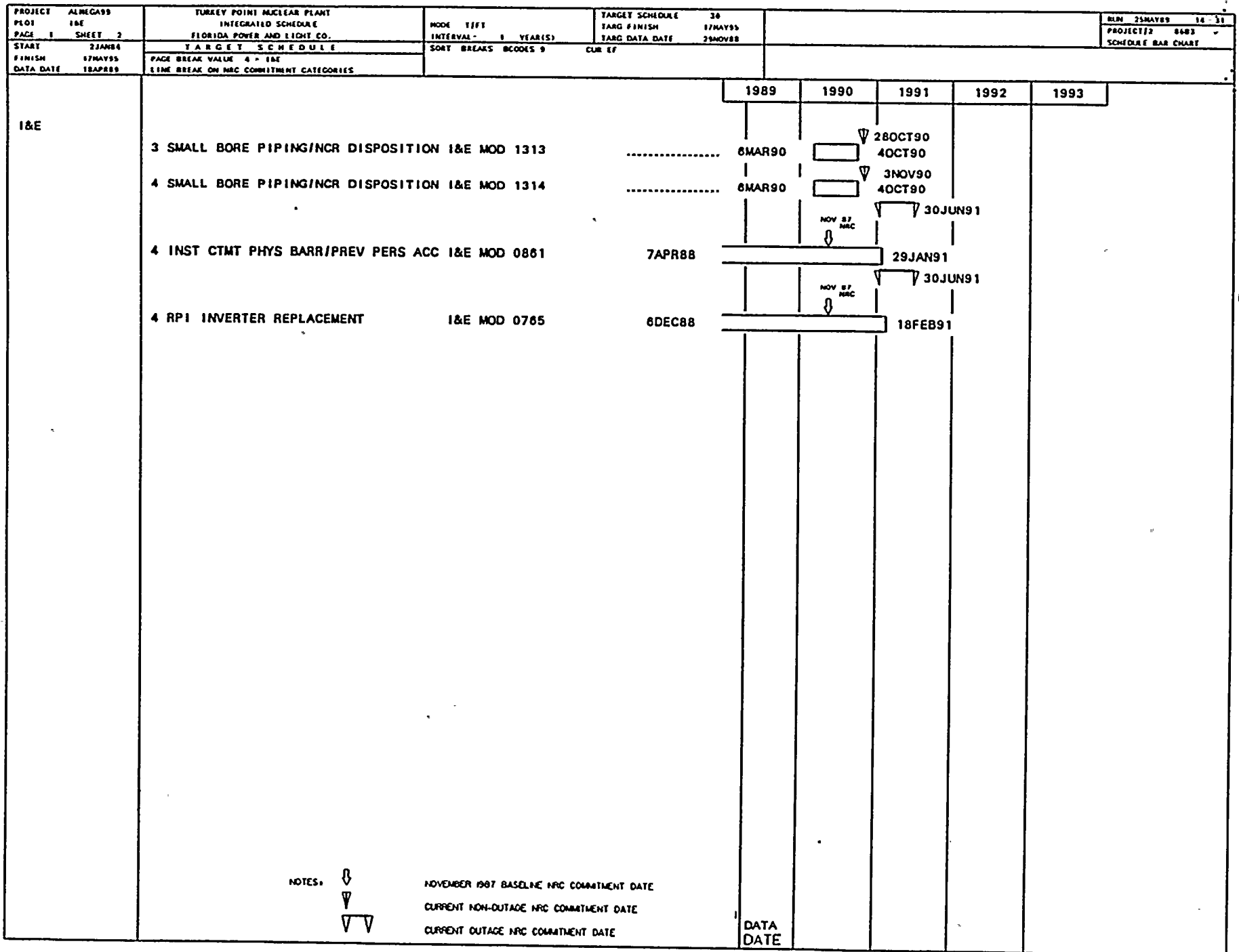


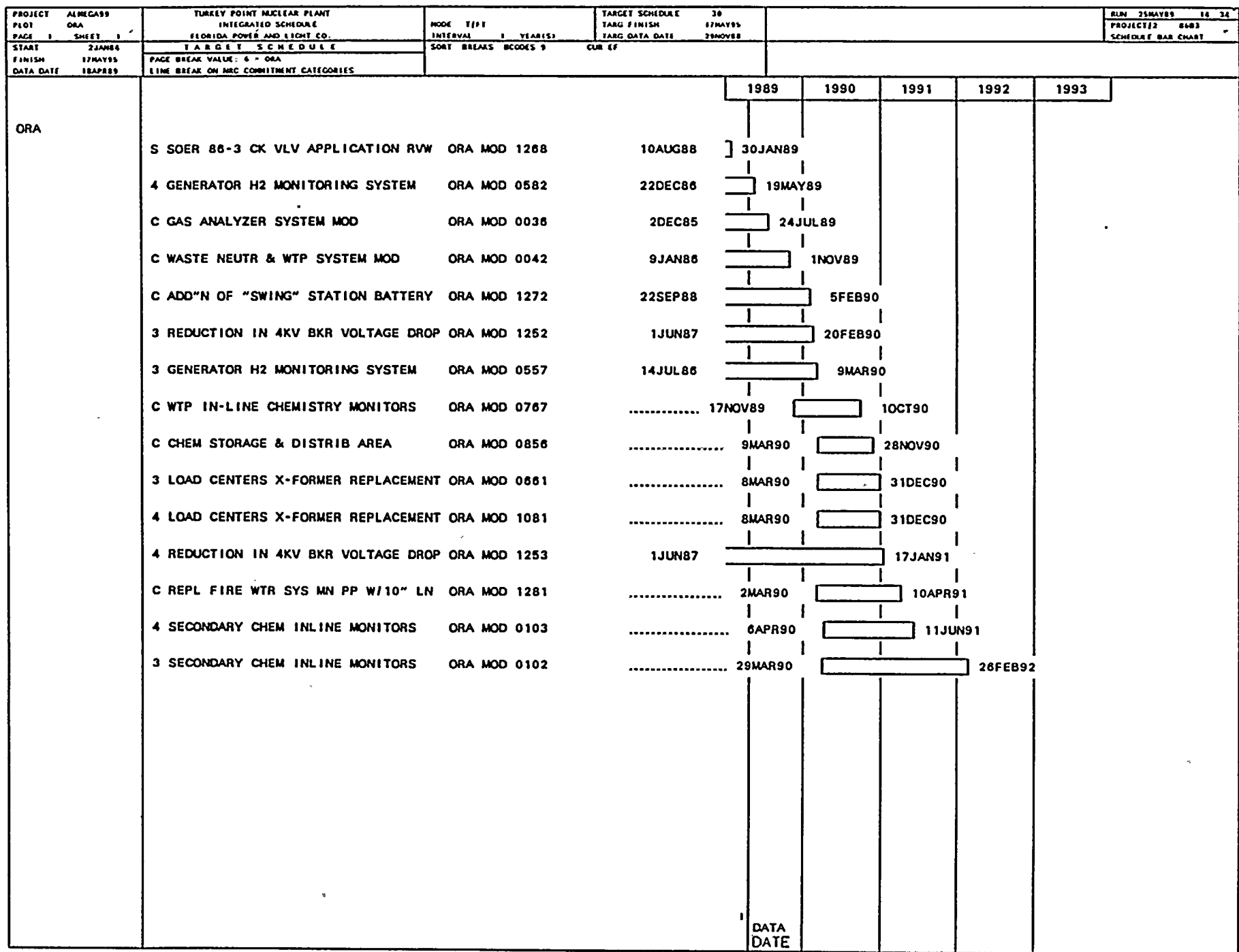












PROJECT ALMICA99	TURKEY POINT NUCLEAR PLANT	MODE T/F/F	TARGET SCHEDULE 30	BLN 25MAY89 14 37			
PLOT FPL	INTEGRATED SCHEDULE	TARG FINISH 17MAY95		PROJECT#2 8403			
PAGE 1 SHEET 1	FLORIDA POWER AND LIGHT CO.	TARG DATA DATE 26NOV88		SCHEDULE BAR CHART			
START 22JAN86	T A R G E T S C H E D U L E	INTERVAL 1 YEAR(S)					
FINISH 17MAY95	PAGE BREAK VALUE: 5 - FPL	SHORT BREAKS BCODES 9					
DATA DATE 18APR89	LINE BREAK ON MRC COMMITMENT CATEGORIES	CUR EF					
FPL			1989	1990	1991	1992	1993
	3 MOV FAIL DUE TO IMPROPER SW SET'G FPL MOD 0526	10APR86	10JAN89				
	C CONTROL BLDG ROOF HANDRAIL INSTL FPL MOD 0703	30OCT87	10FEB89				
	C BREATHING AIR COMPR WTR SOFTENER FPL MOD 0561	13JAN86	15MAR89				
	4 ENHANCED RCP OIL COLL SYS FPL MOD 0713	9OCT87	23MAR89				
	C COMPUTER ROOM FIRE DETECTION FPL MOD 0069	3DEC85	17APR89				
	4 RX VESSEL HEAD LEAKAGE DET SYS FPL MOD 1257	28APR88	17APR89				
	3 MSR MODERNIZATION REPLACEMENT FPL MOD 0050	2DEC85	19APR89				
	C HALON SUPPRESSION SYSTEM FPL MOD 0279	17DEC85	19APR89				
	4 SFP AIR INLET DAMPER REPLACEMENT FPL MOD 0353	4MAY87	19APR89				
	3 MAIN STM SAFETY LIFTING LEVERS FPL MOD 0422	17APR86	19APR89				
	S RHR ROOM VENTILATION FPL MOD 0487	28JUL86	19APR89				
	3 PERM SFP LEVEL MEASURING SCALE FPL MOD 0674	1MAR88	19APR89				
	4 RX MANIP CRANE LOAD TEST DEVICE FPL MOD 1082	10NOV87	19APR89				
	4 HOT/COLD LEG BYPASS RTD CABLE FPL MOD 1128	9MAY88	19APR89				
	S PLANT OUTFALL INVESTIGATION-PTN FPL MOD 1217	29JAN88	19APR89				
	4 MSIV AIR OPERATOR BACKUP N2 SYST FPL MOD 0268	19SEP86	20APR89				
	4 SESR 86-067 ROSEMONT RTD'S FPL MOD 1158	1JUN88	21APR89				
	S COLD OVERPRESSURE MITIGATION SYS FPL MOD 1287	26OCT88	21APR89				
	4 ADD & RELOCATE AFW N2 SUPPLY FPL MOD 0216	2DEC85	24APR89				
	4 REPLACE VELAN CHECK VALVE DISK FPL MOD 0420	18JUN87	24APR89				
	4 REACTOR CAVITY SEAL RING FPL MOD 1073	4AUG87	24APR89				
			DATA DATE				

PROJECT ALMEGA99	TURKEY POINT NUCLEAR PLANT	MODE TFFT	TARGET SCHEDULE 30	BLN 25MAY89	16 '37		
PIOT FPL	INTEGRATED SCHEDULE	INTERVAL 1 YEAR(S)	TARG FINISH 17MAY95	PROJECT# 8683			
PAGE 1 SHEET 2	FLORIDA POWER AND LIGHT CO.		TARG DATA DATE 29NOV88	SCHEDULE BAR CHART			
START 21JAN84	T A R G E T S C H E D U L E	SORT BREAKS BCODES 9	CUR LF				
FINISH 17MAY95	PAGE BREAK VALUE 5 - FPL						
DATA DATE 18APR89	LINE BREAK ON MRC COMMITMENT CATEGORIES						
FPL			1989	1990	1991	1992	1993
	4 REPL. BASKET STRAINER TPCW 4A & B FPL MOD 0277	14JUL87	25APR89				
	S EVAL EDG EXCEEDING FREQ LIMIT FPL MOD 0454	23JAN87	1MAY89				
	4 STM GENERATOR J NOZZLE REPLACEMNT FPL MOD 1274	28JUN88	1MAY89				
	4 CONDENSER INLET WATERBOX REPAIR FPL MOD 1288	14SEP88	1MAY89				
	4 INST FLGS ON RCP SEAL LINES FPL MOD 0479	13MAY87	2MAY89				
	4 INSP/REPR EQ RAYCHEM SPLICES/O&M FPL MOD 0748	18MAR87	4MAY89				
	C EDG ENGINE CNTL PNL LIGHT UPGRADE FPL MOD 0451	18JUL86	6MAY89				
	3 AFW FLOW TRANSMITTER REPLACEMENT FPL MOD 0250	3JUN86	8MAY89				
	4 BACKUP INSTR. AIR COMPRESSOR FPL MOD 0291	4APR86	9MAY89				
	S REV T. SPEC TO CNTMT ISOL VLV FPL MOD 0826	9MAR88	9MAY89				
	S PENETR #18 ELIM ONE VALVE AS CIV FPL MOD 0829	2MAR87	9MAY89				
	S PENETR 27 ADD RV-6223&SGWL AS CIV FPL MOD 0830	2MAR87	9MAY89				
	S PENETR 24 CK VLV VS. ISI PROGRAM FPL MOD 0831	2MAR87	9MAY89				
	S PENETR #30 CV-6165 REQ INSTR AIR FPL MOD 0832	2MAR87	9MAY89				
	S LK RATE SPEC-ELEC PENET RCP 4160V FPL MOD 0834	9MAR88	9MAY89				
	C ELECT DWG SEPARAT'N & RENUMBERING FPL MOD 1095	5JUN87	9MAY89				
	4 RHR PUMPS SEAL UPGRADE FPL MOD 1173	3AUG87	9MAY89				
	4 REPLACE LOW PRESSURE ROTORS FPL MOD 0067	31OCT84	10MAY89				
	C W.T.P. FLOW METERS UPGRADE FPL MOD 0151	11FEB86	10MAY89				
	S EVAL LEAKING CTMT ISOL PURGE VLVS FPL MOD 0597	18JUL86	11MAY89				
	4 PRMS BYPASS SW'S CABNT GRD & ALRM FPL MOD 1240	22FEB88	11MAY89				
			DATA DATE				





PROJECT PLOT PAGE 1 SHEET 3	ALMEGA99 FPL	TURKEY POINT NUCLEAR PLANT INTEGRATED SCHEDULE FLORIDA POWER AND LIGHT CO	MODE 11/11 INTERVAL 1 YEAR(S)	TARGET SCHEDULE 30 TARG FINISH 17MAY95 TARG DATA DATE 29NOV88	BLN 25MAY89 16 37 PROJECT/2 8683 SCHEDULE BAR CHART
START FINISH DATA DATE	22JAN84 17MAY95 18APR89	TARGET SCHEDULE PAGE BREAK VALUE, 5 = FPL LINE BREAK ON NRC COMMITMENT CATEGORIES	SHORT BREAKS BCODES 9	CUR EF	
FPL	3 INSTALL TPCW AMERTAP SYSTEM FPL MOD 1317 TPCW AMERTAP SYSTEM WORK WAS SPLIT FROM MOD 531. TPCW AMERTAP WAS NOT NRC COMMITMENT RELATED. 15MAY86	4 SGWL CNTMT ISOL. VLV REPLACEMENT FPL MOD 0257 4 REPLACE FARRIS RELIEF VALVES/CCW FPL MOD 0415 4 ISO SV-20-OPC TURBINE PROT"N SYS FPL MOD 0564 4 TURB LUBE OIL BOWSER LVL CNTRL FPL MOD 0778 4 NORM CNTMT CLRS CAPACITY INCREASE FPL MOD 0903 4 TURBINE GENERATOR OIL SY FLUSHING FPL MOD 0969 4 CONDENSER CATHODIC PROT UPGRADE FPL MOD 1122 4 REPLACE G.E. CR120BD AUX RELAYS FPL MOD 1208 C ADDITION OF SAS ERDADS FPL MOD 1214 THIS MOD GROUPED ALONG WITH HFE MODS FOR REVIEW VISIBILITY ONLY. MOD 1289 START UPON COMPLETION OF U4 SAS ERDADS. 21AUG87 4 TURBINE BLADE RING EROSION FPL MOD 1237 4 4160V SWGR CNTRL MOD-ADD A DIODE FPL MOD 1244 4 REPL EXTR STM CS PPG W/ CR MOLY FPL MOD 1262 4 CCW HEAT EXCHANGER REPLACEMENT FPL MOD 1280 4 TPCW HX ISOLTN - CV2201 FAIL CLSE FPL MOD 1285 22SEP88 4 HIGH INITIAL RESPONSE EXCITER FPL MOD 0979 3 ADD & RELOCATE AFW N2 SUPPLY FPL MOD 0215 BALANCE OF MOD WORK BEYOND THE COMMITMENT DATE OF 28 JAN 88 IS NOT COFO. REPLACE REPLACE RUPTURE DISCS WITH RELIEF VALVES. 2DEC85 3 BORIC ACID EVAP PMP UPGRADE FPL MOD 0237 12NOV85	1989 1990 1991 1992 1993	12MAY89 19MAY89 19MAY89 19MAY89 19MAY89 19MAY89 19MAY89 19MAY89 19MAY89 19MAY89 19MAY89 19MAY89 19MAY89 19MAY89 19MAY89 19MAY89 20MAY89 23MAY89 23MAY89	
				DATA DATE	

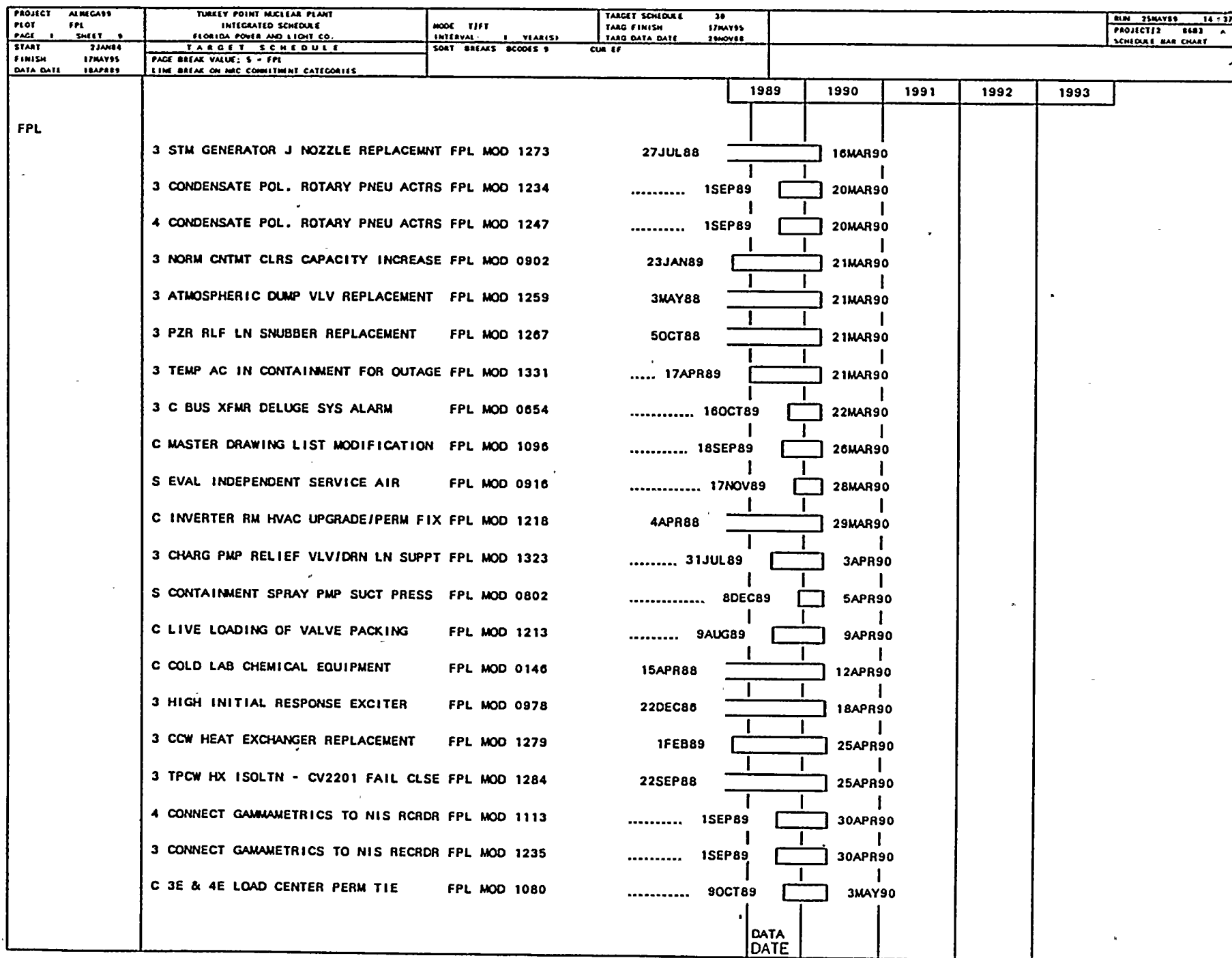
PROJECT PLOT PAGE 1	ALMEGA99 FPL SHEET 4	TURKEY POINT NUCLEAR PLANT INTEGRATED SCHEDULE FLORIDA POWER AND LIGHT CO.	MODE T/F/T INTERVAL 1 YEAR(S)	TARGET SCHEDULE TARG FINISH TARG DATA DATE	30 17MAY95 29NOV88	RUN 25MAY89 14 37 PROJECT/2 8683 SCHEDULE BAR CHART			
START FINISH DATA DATE	22JAN84 17MAY95 18APR89	TARGET SCHEDULE PAGE BREAK VALUE, 5 - FPL LINE BREAK ON MRC COMMITMENT CATEGORIES	SHORT BREAKS BCOOKS 9	CUR EF					
FPL					1989	1990	1991	1992	1993
		3 CHARG PUMP SUCTN QUICK DISCONNECT FPL MOD 0431	22DEC86		23MAY89				
		3 DEL LEAD/LAG MODULE LOW PZR LOOPS FPL MOD 1003	1JUL87		23MAY89				
		4 DEL LEAD/LAG MODULE/LOW PZR LOOPS FPL MOD 1004	1JUL87		23MAY89				
		4 PERM SFP LEVEL MEASURING SCALE FPL MOD 1132	15MAR88		23MAY89				
		C NEW EDG PROJ SITE PREPARATION FPL MOD 1137	15JUN87		23MAY89				
		C EDG DIESEL/D.O.S.T. BLDG CONST FPL MOD 1174	8MAY87		23MAY89				
		4 CHARG PUMP SUCTN QUICK DISCONNECT FPL MOD 1255	22DEC86		23MAY89				
		3 SI PMP MINI-RECIRC VLV KEYLOCK SW FPL MOD 1206	23MAR88		24MAY89				
		S CNTMT ISOL SYS STROKE TIME - MOV FPL MOD 0827	9MAR88		30MAY89				
		4 UPRD RCP OIL LIFT SYS/LOWR COOLR FPL MOD 1021	30OCT88		31MAY89				
		S NRC AUDIT PEP PROJ4/CONFIG MGT FPL MOD 1306	17MAR89		2JUN89				
		4 REPL TUBE SIDE CCW HX TIS W/RTD'S FPL MOD 0418	15APR87		8JUN89				
		3 MSIV AIR OPERATOR BACKUP N2 SYST FPL MOD 0267	2DEC85		9JUN89				
		S ECF DRAIN LOOP SEALS EVAPORATION FPL MOD 0801	9MAR88		19JUN89				
		3 MSR INSTRUMENTATION FPL MOD 1010	26JUN87		20JUN89				
		C MN CTL RM DOOR & SECURITY SYS MOD FPL MOD 1271	13JUL88		27JUN89				
		C RELOCATE RMS EMERG LTS 87 & 88 FPL MOD 1227	27OCT88		28JUN89				
		4 SFP DEMIN RESIN FLUSH UPGRADE FPL MOD 1155	19OCT87		30JUN89				
		S ACCEPTABILITY OF DC EQUIP RATINGS FPL MOD 0404	11JAN88		3JUL89				
		3 UPRD RCP OIL LIFT SYS/LWR COOLER FPL MOD 0888	10AUG88		11JUL89				
		S REVIEW WEJ-IT EXPANSION ANCHORS FPL MOD 0586	4MAY87		13JUL89				
				DATA DATE					

PROJECT PLOT PAGE 1 SHEET 5	ALMEGA99 FPL	TURKEY POINT NUCLEAR PLANT INTEGRATED SCHEDULE FLORIDA POWER AND LIGHT CO.	MODE T/P1 INTERVAL 1 YEAR(S)	TARGET SCHEDULE IARG FINISH IARG DATA DATE	30 17MAY95 26NOV88	RUN 25MAY89 14 37 PROJECT/2 8683 SCHEDULE BAR CHART			
START FINISH DATA DATE	22JAN84 17MAY95 18APR89	TARGET SCHEDULE PAGE BREAK VALUE 5 - FPL LINE BREAK ON NRC COMMITMENT CATEGORIES	SORT BREAKS BCODES 9	CUR EF					
FPL					1989	1990	1991	1992	1993
	S BOUNDARIES FOR VISUAL LEAK INSP FPL MOD 0396	16JAN87		24JUL89					
	4 HEATER DRAIN TANK SAMPLE SYSTEM FPL MOD 1050	9OCT87		26JUL89					
	4 INSTALL TPCW AMERTAP SYSTEM FPL MOD 1318 TPCW AMERTAP SYSTEM WORK WAS SPLIT FROM MOD 588. TPCW AMERTAP WAS NOT NRC COMMITMENT RELATED.	15APR87		27JUL89					
	S DE-ENERGIZE 4160V SFTY REL BUSSES FPL MOD 0850 (S REV TP-273 AUX SJU XFMR AUTO XFR)	5APR88		28JUL89					
	C AFW PUMPS-GOVRNR VLV STEM GUARDS FPL MOD 1105	9JAN87		28JUL89					
	C DES & PURCH STA BATTERY CHARGERS FPL MOD 1275	13JUL88		28JUL89					
	3 HEATER DRAIN TANK SAMPLE SYSTEM FPL MOD 0072	26OCT87		31JUL89					
	3 REPL CCW HX THERMOMETERS W/RTD'S FPL MOD 0417	30MAR87		9AUG89					
	S HFE REVW ON PCMS IMPLMNTD GT 9/85 FPL MOD 0965	13MAR89		14AUG89					
	C NEW EDG FIRE PROTECTION FPL MOD 1176	11MAY88		29AUG89					
	S LIMITING CONDITION CVT OPERATION FPL MOD 0344	29DEC86		5SEP89					
	S ECCS HEAT SINK UPDATE FPL MOD 0362	6MAY87		5SEP89					
	3 SFP DEMIN RESIN FLUSH UPGRADE FPL MOD 0956	6OCT87		5SEP89					
	C INTAKE TRASH BOX STRAINER BASKET FPL MOD 1277	1AUG88		12SEP89					
	3 480V LOAD CENTER COOLING FACILITY FPL MOD 0086	10JAN86		19SEP89					
	S EVAL DES.BASIS ACCIDENT HT LD REM FPL MOD 0855	10NOV87		9OCT89					
	3 POST ACCIDENT H2 MONITORS UPGRD FPL MOD 0363	12OCT87		18OCT89					
	4 SPENT FUEL POOL RERACKING FPL MOD 1190	31JUL87		20OCT89					
	S PROVIDE NPSH INFO ON RHR PUMPS FPL MOD 0818	..... 3AUG89		23OCT89					
	3 "C" BUS SWGR ENCL A/C MODS FPL MOD 0070	14OCT85		26OCT89					
				DATA DATE					

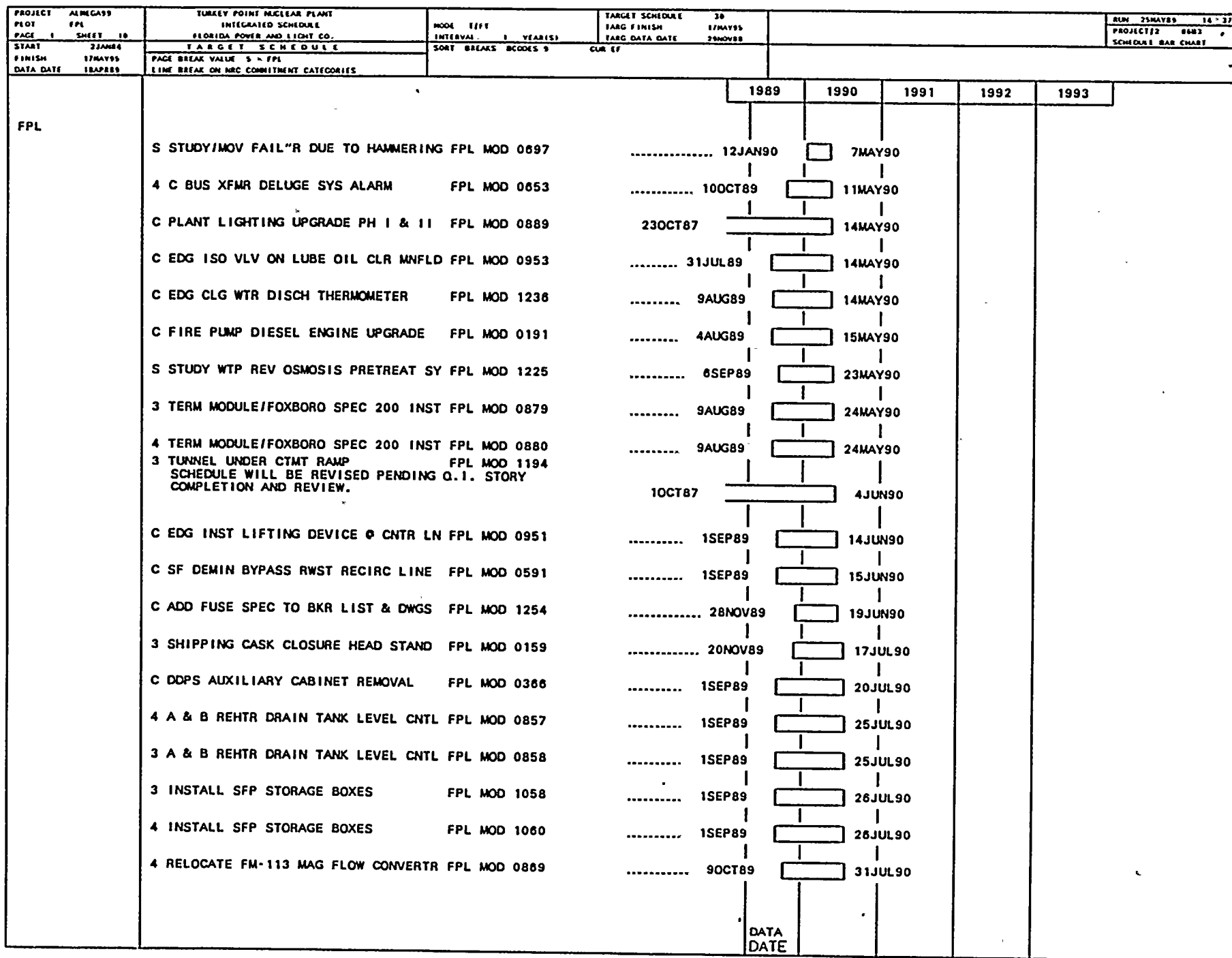
PROJECT ALMEGA99 FPL	TURKEY POINT NUCLEAR PLANT INTEGRATED SCHEDULE FLORIDA POWER AND LIGHT CO.	MODE TYPE INTERVAL 1 YEAR(S)	TARGET SCHEDULE 30 TARG FINISH 17MAY95 TARG DATA DATE 29NOV88	BLN 25MAY89 16 57 PROJECT 12 8683 SCHEDULE BAR CHART			
PAGE 1 SHEET 6	TARGET SCHEDULE	SOFT BREAKS BCODES 9	CUR EF				
START 22JAN84 FINISH 17MAY95 DATA DATE 18APR89	PAGE BREAK VALUE, 5 - FPL LINE BREAK ON NRC COMMITMENT CATEGORIES						
FPL			1989	1990	1991	1992	1993
	4 "C" BUS SWGR ENCL A/C MODS FPL MOD 0071	3DEC85		26OCT89			
	C WASTE GAS SYS UPGRADE PROGRAM FPL MOD 0768	28APR88		6NOV89			
	S UPGRADE TASK ANAL FOR PRESENT EOP FPL MOD 1299	29SEP88		13NOV89			
	S 480V LOAD CTR UND VOLTAGE SETTING FPL MOD 0484	9AUG89		15NOV89			
	S AFW PUMP TURBINE LUBE OIL SETPTS. FPL MOD 0544	27JUL89		16NOV89			
	S IA/REGULATOR ID NUMBER FPL MOD 0918	27JUL89		16NOV89			
	S IA/EVAL SFTY FUNCT'NS EFFECTED EQ FPL MOD 0917	28JUL89		17NOV89			
	S REVISE FSAR ON INSTRUMENT AIR FPL MOD 0921	28JUL89		17NOV89			
	S EVAL CABINET REARRANGEMENT FOR IA FPL MOD 0912	31JUL89		20NOV89			
	S RHR MOV 744 A & B FPL MOD 0822	3AUG89		24NOV89			
	S REVIEW COMPRESSOR LOADING FOR IA FPL MOD 0922	3AUG89		24NOV89			
	S FSAR8.2-18A/INCORP AIR REG SET PT FPL MOD 0927	3AUG89		24NOV89			
	S LONG TERM ECC FAN TEST FPL MOD 0823	4AUG89		27NOV89			
	S PROV ACCEPT CRIT FOR OIL XFR PMPS FPL MOD 0928	4AUG89		27NOV89			
	S EVAL PROB RISK ASSMT STDY FOR EDG FPL MOD 0937	4AUG89		27NOV89			
	C ON-GOING DES BAS ENH-ORIG 15 SYS FPL MOD 1224	18DEC87		29NOV89			
	S EVAL CNDSR BOOT SEAL REPLACEMENT FPL MOD 0462	9AUG89		30NOV89			
	S SINGLE FAILURES IN AFW SYSTEM FPL MOD 1304	28JUL89		4DEC89			
	3 SFP BRIDGE CRANE REPLACEMENT FPL MOD 0745	20JAN88		6DEC89			
	S ECC EXTEND LOC LIMIT FPL MOD 0824	9AUG89		13DEC89			
	4 SECONDARY SIDE HIGH-ENERGY PIPING FPL MOD 0892	13JUN88		18DEC89			
			DATA DATE				

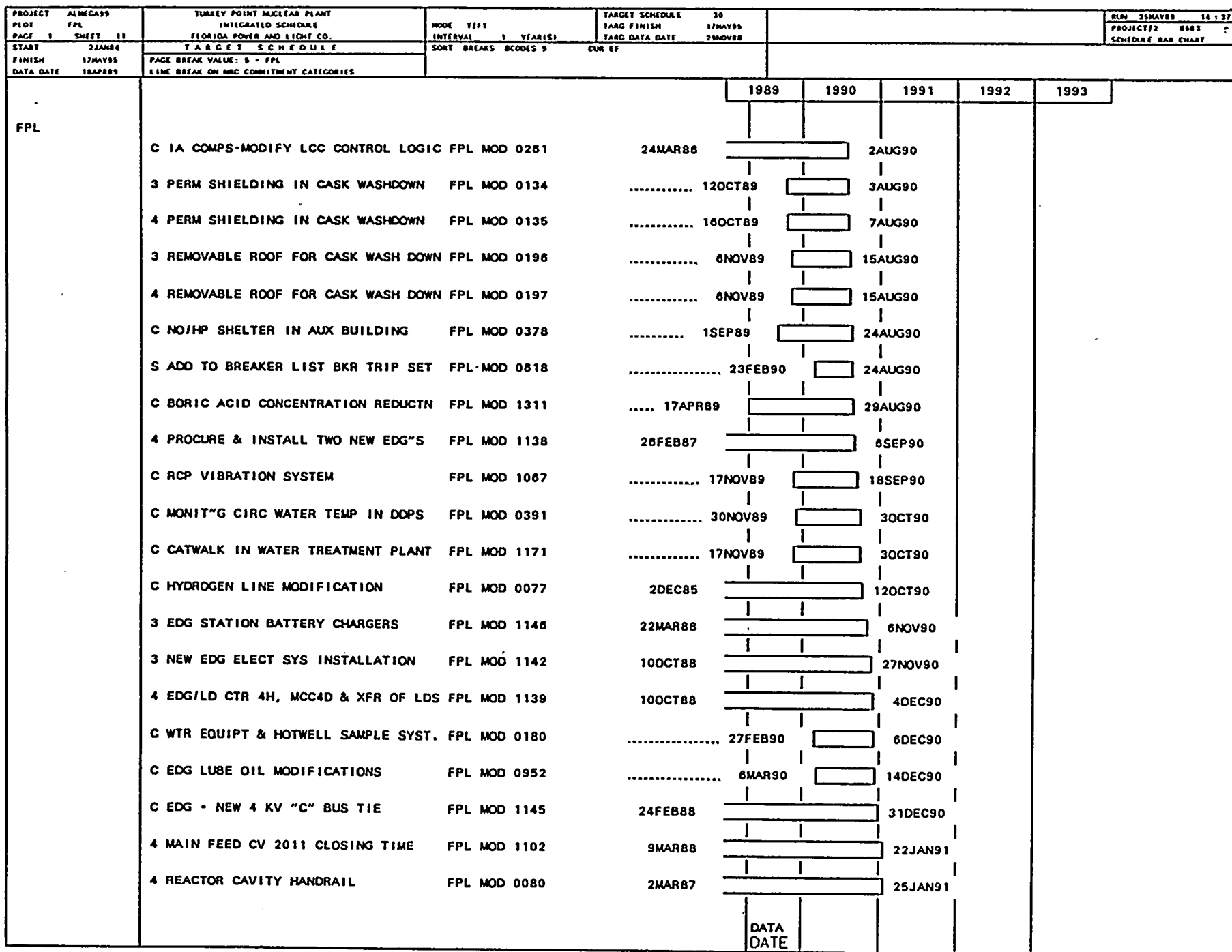
PROJECT PLOT PAGE 1 SHEET 7	ALMEGA99 FPL	TURKEY POINT NUCLEAR PLANT INTEGRATED SCHEDULE FLORIDA POWER AND LIGHT CO.	MODE 1/FT INTERVAL 1 YEAR(S)	TARGET SCHEDULE TARG FINISH 30 17MAY95 TARG DATA DATE 29NOV88	BLN 25MAY89 14 37 PROJECT/2 8683 SCHEDULE BAR CHART	
START 22JAN84 FINISH 17MAY95 DATA DATE 18AP89	T A R G E T S C H E D U L E PAGE BREAK VALUE: 5 = FPL LINE BREAK ON MRC COMMITMENT CATEGORIES		S O R T B R E A K S B C O D E S 9 C U R E F			
FPL	C CHEMICAL STORAGE BLDG CENTRAL A/C FPL MOD 1202	22FEB88	18DEC89			
	S REV RM VNT&COMBS"N AIR INL CONCRN FPL MOD 0938	..... 4AUG89	20DEC89			
	S RESOLVE CNTMT PURG FSAR DISCREP FPL MOD 0828	..... 1SEP89	27DEC89			
	S EVAL 2 FULL CAP DIESEL COMPR - 1A FPL MOD 0914	..... 1SEP89	27DEC89			
	S EVAL 2 FULL CAP DIESEL GEN FOR 1A FPL MOD 0915	..... 1SEP89	27DEC89			
	S ICW CK VLV OPER W/1A FAILURE FPL MOD 1283	..... 4AUG89	27DEC89			
	S ICW PMP FDN SFTY HAZARD EVALUAT"N FPL MOD 1310	..... 9AUG89	2JAN90			
	4 POST ACCIDENT H2 MONITORS UPGRD FPL MOD 0364	15JAN88	10JAN90			
	3 REM NMC RAD AIR MON/CNTRL ROOM FPL MOD 0350	..... 1SEP89	22JAN90			
	4 REM NMC RAD AIR MON/CNTRL ROOM FPL MOD 0351	..... 1SEP89	22JAN90			
	S FSAR START TIME DESCRP/DATA VERIF FPL MOD 0497	..... 3AUG89	25JAN90			
	S METEOROLOGICAL SYSTEMS EVALUATION FPL MOD 1053	..... 4AUG89	26JAN90			
	4 SFP BRIDGE CRANE REPLACEMENT FPL MOD 0744	4FEB88	30JAN90			
	3 POLAR CRANE MOTORS/ENGR PACKAGE FPL MOD 0476	..... 12SEP89	5FEB90			
	4 POLAR CRANE MOTORS/ENGR PACKAGE FPL MOD 0477	..... 12SEP89	5FEB90			
	C A&B EMERG. DIESEL AIR COMPR. MTRS FPL MOD 1230	..... 28JUL89	6FEB90			
	S STUDY FAILURE MODE/GE AUX RELAYS FPL MOD 1114	..... 9AUG89	14FEB90			
	C NEW EDG BLDGS LTG FIRE COMM HVAC FPL MOD 1175	20MAY87	14FEB90			
	C EXISTING "A" EDG IDLE START/STOP FPL MOD 0132	14JAN87	16FEB90			
	3 SGWL CNTMT ISOLAT"N VLV REPLACENT FPL MOD 0293	21MAR88	20FEB90			
	C EDG PROJECT LICENSING SUBMITTALS FPL MOD 1144	20JUL87	21FEB90			
		DATA DATE				

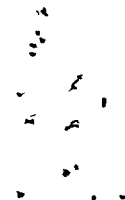
PROJECT ALMEGAS	TURKEY POINT NUCLEAR PLANT	MODE T/FT	TARGET SCHEDULE	30	RLW 25MAY89	14	27
PIOT FPL	INTEGRATED SCHEDULE	INTERVAL 1 YEAR(S)	TARG FINISH	17MAY90	PROJECTED	8483	
PAGE 1 SHEET 8	FLORIDA POWER AND LIGHT CO		TARG DATA DATE	29NOV88	SCHEDULE BAR CHART		
START 22JAN84	T A R G E T S C H E D U L E	SHORT BREAKS BCODES 9	CUR EF				
FINISH 17MAY90	PAGE BREAK VALUE: 5 - FPL						
DATA DATE 18APR89	LINE BREAK ON NRC COMMITMENT CATEGORIES						
				1989	1990	1991	1992
				1993			
FPL	3 REACTOR CAVITY FILTER LEAD SHIELD FPL MOD 0236	1MAY84		22FEB90			
	3 MAIN FEED CV 2011 CLOSING TIME FPL MOD 0662	9MAR88		22FEB90			
	3 BACKUP INSTR. AIR COMPRESSOR FPL MOD 0280	1APR88		23FEB90			
	3 RHR PUMPS SEAL UPGRADE FPL MOD 1172	31AUG87		27FEB90			
	3 INSTL MANIPULATOR CRANE AIR COMPR FPL MOD 0852	19FEB87		1MAR90			
	3 REPLACE G.E. CR120BD AUX RELAYS FPL MOD 1207 POTENTIAL SHORT NOTICE OUTAGE WORK.	10AUG87		1MAR90			
	3 REPLACE FARRIS RELIEF VALVES/CCW FPL MOD 0414	22DEC86		5MAR90			
	C EDG HC TURBO/IDLE GEAR STUB SHAFT FPL MOD 0509	16MAR88		5MAR90			
	3 SESR 86-067 ROSEMONT RTD'S FPL MOD 1157	1JUN88		5MAR90			
	3 REACTOR CAVITY HANDRAIL FPL MOD 0233	2MAR87		6MAR90			
	C EXISTING "B" EDG IDLE START/STOP FPL MOD 1001	1MAY87		7MAR90			
	4 CHARG PMP RELIEF VLV/DRN LN SUPPT FPL MOD 1324	..... 19APR89		7MAR90			
	3 REPL RX/REF CAVITY LTG FIXTURES FPL MOD 0356	27DEC85		9MAR90			
	3 CRDM MTR GEN SET VBRTN MONTRG SYS FPL MOD 0092	3JAN85		12MAR90			
	3 PRMS BYPASS SW'S CABNT GRD & ALRM FPL MOD 1239	22FEB88		12MAR90			
	3 ENHANCED RCP OIL COLL SYS FPL MOD 0120	20MAY86		15MAR90			
	3 REPL. BASKET STRAINER TPCW 3A & B FPL MOD 0276	14JUL87		15MAR90			
	3 ADD"L CNTMT ELECT PENETRATIONS FPL MOD 0549	15FEB89		15MAR90			
	C WALKDOWN INSTRUMENT AIR SYSTEM FPL MOD 0924	..... 9AUG89		15MAR90			
	S TEDB UPGRADE TO INCLUDE Q LIST FPL MOD 1278	..... 31JUL89		15MAR90			
	S LOAD FLOW AND VOLTAGE DROP STUDY FPL MOD 0585	..... 13NOV89		16MAR90			
				DATA DATE			











PROJECT PLOT	ALMEGA99 FPL	TURKEY POINT NUCLEAR PLANT INTEGRATED SCHEDULE FLORIDA POWER AND LIGHT CO	MODEL T/F/F INTERVAL 1 YEAR(S)	TARGET SCHEDULE TARG FINISH TARG DATA DATE	38 17MAY95 29NOV88	BLN 35MAY88 14-37 PROJECT#2 8683 SCHEDULE BAR CHART
PAGE 1	SHEET 12	TARGET SCHEDULE	SORT BREAKS BCODES 9	CUR EF		
START	22JAN88	PAGE BREAK VALUE, 5 = FPL				
FINISH	17MAY95	LINE BREAK ON MRC COMMITMENT CATEGORIES				
DATA DATE	18APR89					
						</



