

REGULATORY INFORMATION DISTRIBUTION SYSTEM (RIDS)

ACCESSION NBR: 8706250257 DOC. DATE: 87/06/22 NOTARIZED: NO DOCKET #
 FACIL: 50-250 Turkey Point Plant, Unit 3, Florida Power and Light C 05000250
 50-251 Turkey Point Plant, Unit 4, Florida Power and Light C 05000251
 AUTH. NAME AUTHOR AFFILIATION
 WOODY, C. D. Florida Power & Light Co.
 RECIP. NAME RECIPIENT AFFILIATION
 Document Control Branch (Document Control Desk)

SUBJECT: Forwards regulatory rept for June 1987, consisting of current integrated schedule w/correct baseline schedules for forthcoming integrated schedule license amend. Rept provided as update to rept transmitted on 870427.

DISTRIBUTION CODE: A001D COPIES RECEIVED: LTR 1 ENCL 1 SIZE: 22
 TITLE: OR Submittal: General Distribution

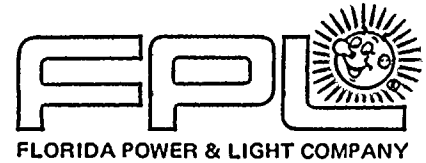
NOTES:

	RECIPIENT ID CODE/NAME	COPIES LTTR ENCL	RECIPIENT ID CODE/NAME	COPIES LTTR ENCL
	PD2-2 LA	1 0	PD2-2 PD	5 5
	McDONALD, D	1 1		
INTERNAL:	ARM/DAF/LFMB	1 0	NRR/DEST/ADE	1 1
	NRR/DEST/ADS	1 1	NRR/DOEA/TSB	1 1
	NRR/BMAS/ILRB	1 1	OGC/HDS2	1 0
	<u>REG FILE</u> 01	1 1		
EXTERNAL:	EG&G BRUSKE, S	1 1	LPDR	1 1
	NRC PDR	1 1	NSIC	1 1

55

1

1



JUNE 22 1987

L-87-263

U.S. Nuclear Regulatory Commission
Attn: Document Control Desk
Washington, D.C. 20555

Gentlemen:

Re: Turkey Point Units 3 and 4
Docket Nos. 50-250 and 50-251
Proposed License Amendment
Integrated Schedule

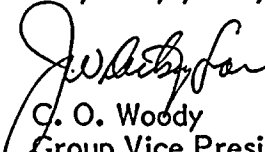
Enclosed please find a copy of the Turkey Point Regulatory Report for June 1987, containing the current Integrated Schedule information with the correct baseline schedules for the forthcoming Integrated Schedule license amendment.

This report is provided as an update to our previous report provided with our letter of April 27, 1987 (L-87-182).

For your review convenience, we have sorted the schedules by category and have included an indicator code and dates for non-outage and outage related commitments. Completion dates for non-outage items are scheduled 60 days before the commitment dates and completion dates for outage-related items are scheduled at the end of the outages.

Should there be any questions regarding this information, please contact us as soon as possible, so that we may resolve any concerns which could delay issuance of the amendments.

Very truly yours,


C. O. Woody
Group Vice President
Nuclear Energy Department

COW/JRL/gp

cc: Dr. J. Nelson Grace, Regional Administrator, Region II, USNRC
Senior Resident Inspector, USNRC, Turkey Point Plant
Mr. Lyle Jerrett, Florida Dept. of Health and Rehabilitative Services

Adol
1/1

8706250257 870622
PDR ADOCK 05000250
P PDR

MLC/009/1

[illegible]

Journal of Management Education

[illegible]

Journal of Management Studies, 20(6), 799-814
© Blackwell Publishers Ltd. 2007

[illegible]

1. The first group of people who are interested in the study of the history of the world are the historians. They are the people who study the past and write about it. They are the people who tell us what happened and why it happened. They are the people who help us to understand the world and ourselves.

[illegible]

1. 2. 3. 4. 5. 6. 7. 8. 9. 10. 11. 12. 13. 14. 15. 16. 17. 18. 19. 20. 21. 22. 23. 24. 25. 26. 27. 28. 29. 30. 31. 32. 33. 34. 35. 36. 37. 38. 39. 40. 41. 42. 43. 44. 45. 46. 47. 48. 49. 50. 51. 52. 53. 54. 55. 56. 57. 58. 59. 60. 61. 62. 63. 64. 65. 66. 67. 68. 69. 70. 71. 72. 73. 74. 75. 76. 77. 78. 79. 80. 81. 82. 83. 84. 85. 86. 87. 88. 89. 90. 91. 92. 93. 94. 95. 96. 97. 98. 99. 100. 101. 102. 103. 104. 105. 106. 107. 108. 109. 110. 111. 112. 113. 114. 115. 116. 117. 118. 119. 120. 121. 122. 123. 124. 125. 126. 127. 128. 129. 130. 131. 132. 133. 134. 135. 136. 137. 138. 139. 140. 141. 142. 143. 144. 145. 146. 147. 148. 149. 150. 151. 152. 153. 154. 155. 156. 157. 158. 159. 160. 161. 162. 163. 164. 165. 166. 167. 168. 169. 170. 171. 172. 173. 174. 175. 176. 177. 178. 179. 180. 181. 182. 183. 184. 185. 186. 187. 188. 189. 190. 191. 192. 193. 194. 195. 196. 197. 198. 199. 200. 201. 202. 203. 204. 205. 206. 207. 208. 209. 210. 211. 212. 213. 214. 215. 216. 217. 218. 219. 220. 221. 222. 223. 224. 225. 226. 227. 228. 229. 230. 231. 232. 233. 234. 235. 236. 237. 238. 239. 240. 241. 242. 243. 244. 245. 246. 247. 248. 249. 250. 251. 252. 253. 254. 255. 256. 257. 258. 259. 260. 261. 262. 263. 264. 265. 266. 267. 268. 269. 270. 271. 272. 273. 274. 275. 276. 277. 278. 279. 280. 281. 282. 283. 284. 285. 286. 287. 288. 289. 290. 291. 292. 293. 294. 295. 296. 297. 298. 299. 300. 301. 302. 303. 304. 305. 306. 307. 308. 309. 310. 311. 312. 313. 314. 315. 316. 317. 318. 319. 320. 321. 322. 323. 324. 325. 326. 327. 328. 329. 330. 331. 332. 333. 334. 335. 336. 337. 338. 339. 340. 341. 342. 343. 344. 345. 346. 347. 348. 349. 350. 351. 352. 353. 354. 355. 356. 357. 358. 359. 360. 361. 362. 363. 364. 365. 366. 367. 368. 369. 370. 371. 372. 373. 374. 375. 376. 377. 378. 379. 380. 381. 382. 383. 384. 385. 386. 387. 388. 389. 390. 391. 392. 393. 394. 395. 396. 397. 398. 399. 400. 401. 402. 403. 404. 405. 406. 407. 408. 409. 410. 411. 412. 413. 414. 415. 416. 417. 418. 419. 420. 421. 422. 423. 424. 425. 426. 427. 428. 429. 430. 431. 432. 433. 434. 435. 436. 437. 438. 439. 440. 441. 442. 443. 444. 445. 446. 447. 448. 449. 450. 451. 452. 453. 454. 455. 456. 457. 458. 459. 460. 461. 462. 463. 464. 465. 466. 467. 468. 469. 470. 471. 472. 473. 474. 475. 476. 477. 478. 479. 480. 481. 482. 483. 484. 485. 486. 487. 488. 489. 490. 491. 492. 493. 494. 495. 496. 497. 498. 499. 500. 501. 502. 503. 504. 505. 506. 507. 508. 509. 510. 511. 512. 513. 514. 515. 516. 517. 518. 519. 520. 521. 522. 523. 524. 525. 526. 527. 528. 529. 530. 531. 532. 533. 534. 535. 536. 537. 538. 539. 540. 541. 542. 543. 544. 545. 546. 547. 548. 549. 550. 551. 552. 553. 554. 555. 556. 557. 558. 559. 560. 561. 562. 563. 564. 565. 566. 567. 568. 569. 570. 571. 572. 573. 574. 575. 576. 577. 578. 579. 580. 581. 582. 583. 584. 585. 586. 587. 588. 589. 590. 591. 592. 593. 594. 595. 596. 597. 598. 599. 600. 601. 602. 603. 604. 605. 606. 607. 608. 609. 610. 611. 612. 613. 614. 615. 616. 617. 618. 619. 620. 621. 622. 623. 624. 625. 626. 627. 628. 629. 630. 631. 632. 633. 634. 635. 636. 637. 638. 639. 640. 641. 642. 643. 644. 645. 646. 647. 648. 649. 650. 651. 652. 653. 654. 655. 656. 657. 658. 659. 660. 661. 662. 663. 664. 665. 666. 667. 668. 669. 670. 671. 672. 673. 674. 675. 676. 677. 678. 679. 680. 681. 682. 683. 684. 685. 686. 687. 688. 689. 690. 691. 692. 693. 694. 695. 696. 697. 698. 699. 700. 701. 702. 703. 704. 705. 706. 707. 708. 709. 710. 711. 712. 713. 714. 715. 716. 717. 718. 719. 720. 721. 722. 723. 724. 725. 726. 727. 728. 729. 730. 731. 732. 733. 734. 735. 736. 737. 738. 739. 740. 741. 742. 743. 744. 745. 746. 747. 748. 749. 750. 751. 752. 753. 754. 755. 756. 757. 758. 759. 760. 761. 762. 763. 764. 765. 766. 767. 768. 769. 770. 771. 772. 773. 774. 775. 776. 777. 778. 779. 780. 781. 782. 783. 784. 785. 786. 787. 788. 789. 790. 791. 792. 793. 794. 795. 796. 797. 798. 799. 800. 801. 802. 803. 804. 805. 806. 807. 808. 809. 810. 811. 812. 813. 814. 815. 816. 817. 818. 819. 820. 821. 822. 823. 824. 825. 826. 827. 828. 829. 830. 831. 832. 833. 834. 835. 836. 837. 838. 839. 840. 84

Journal of Management Education 30(6)p. 789-804
© The Author(s) 2006
Reprints and permissions:
<http://www.sagepub.com/journalsPermissions.nav>

1 2 3 4

1. The first step is to identify the problem. This involves understanding the situation and the goals that need to be achieved.

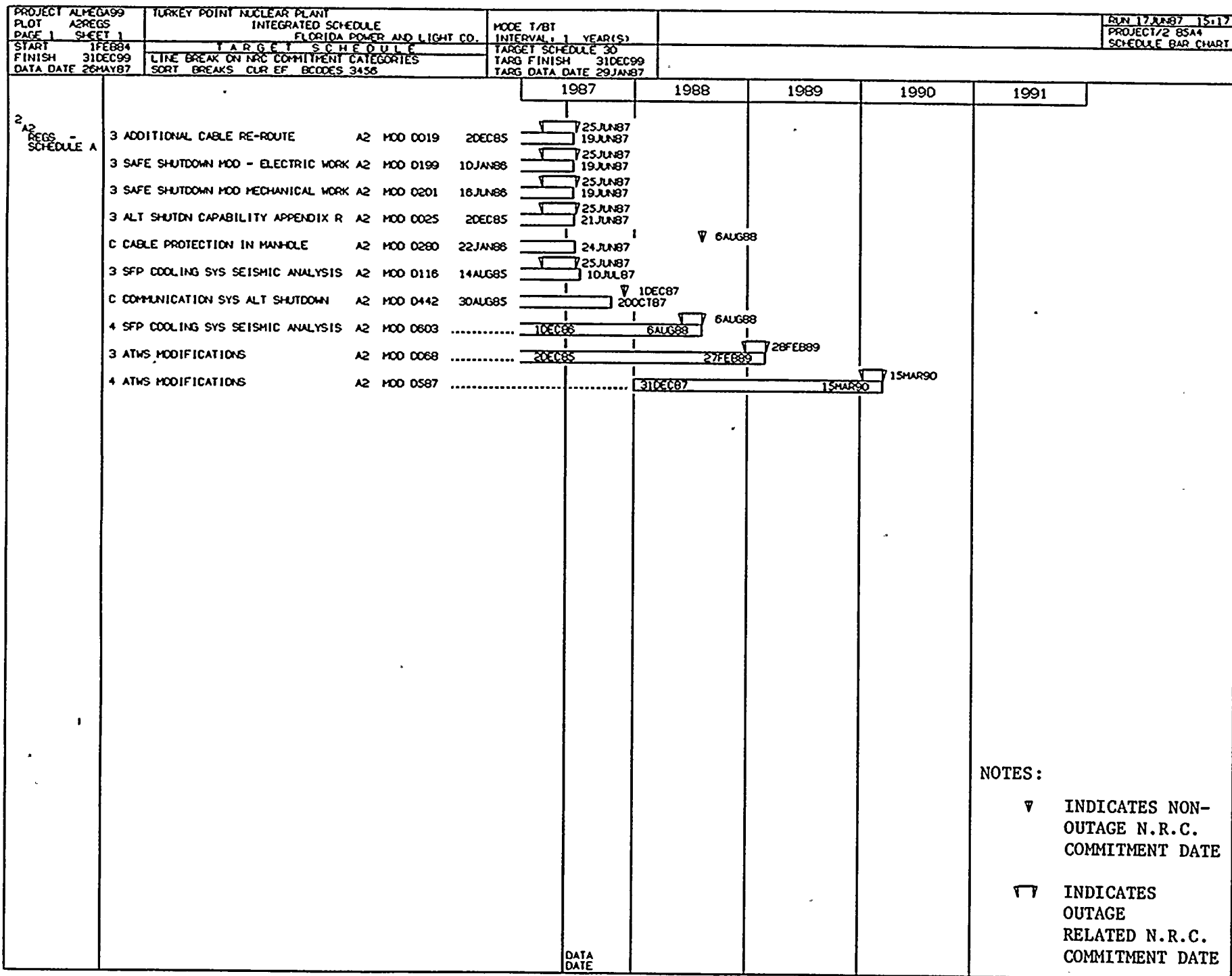
*FLORIDA POWER
AND
LIGHT COMPANY*

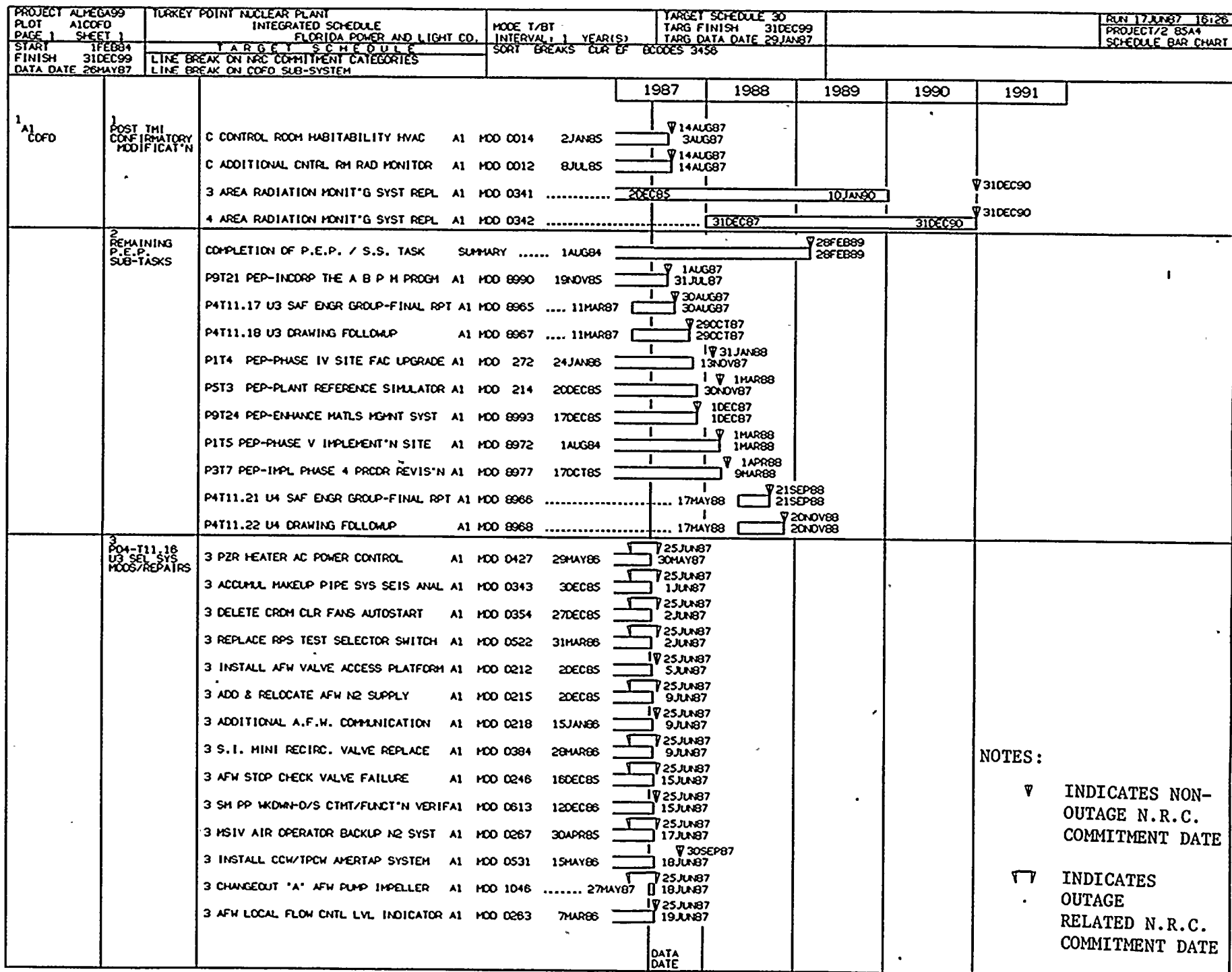
INTEGRATED SCHEDULE

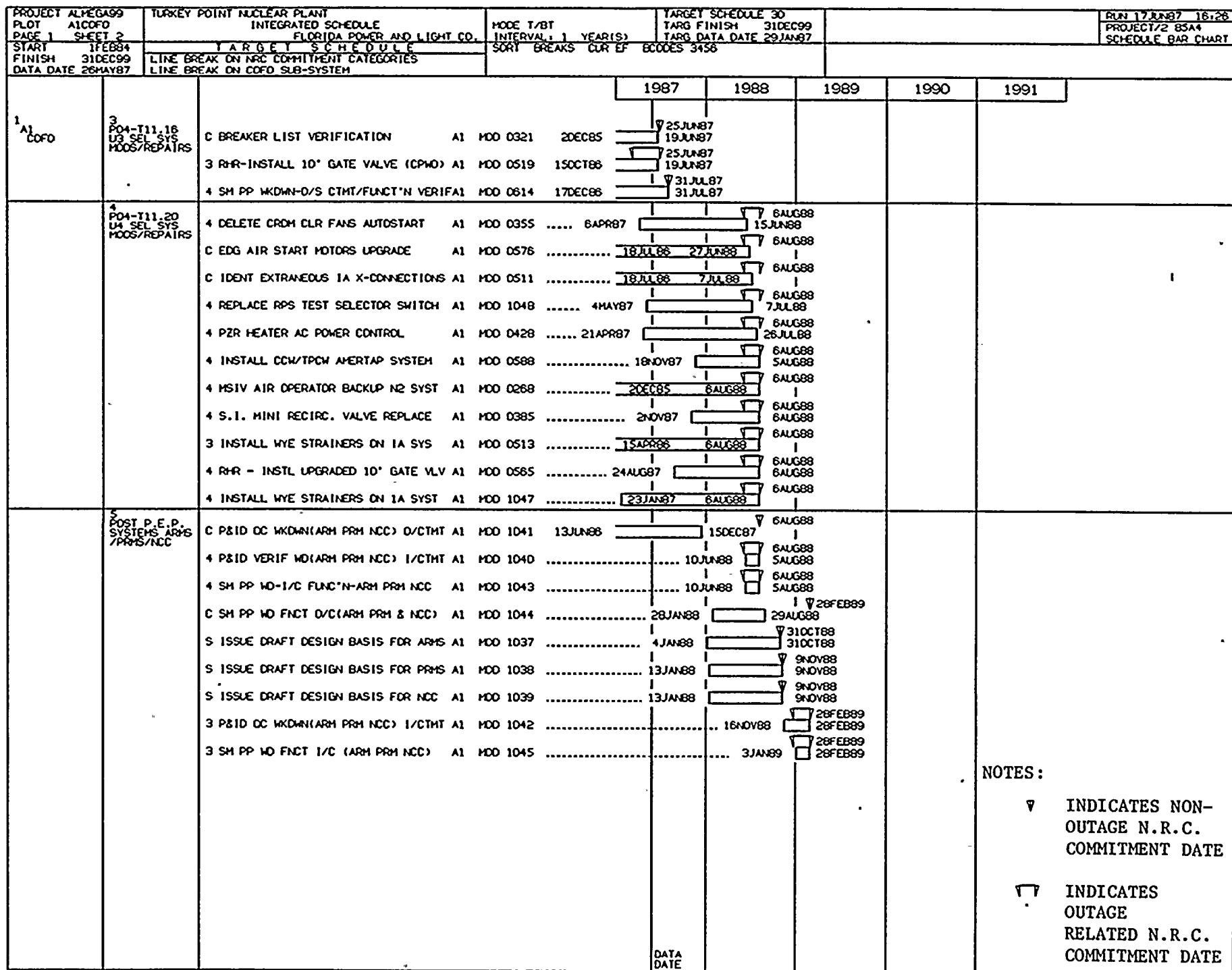
*TURKEY POINT
NUCLEAR POWER PLANT*

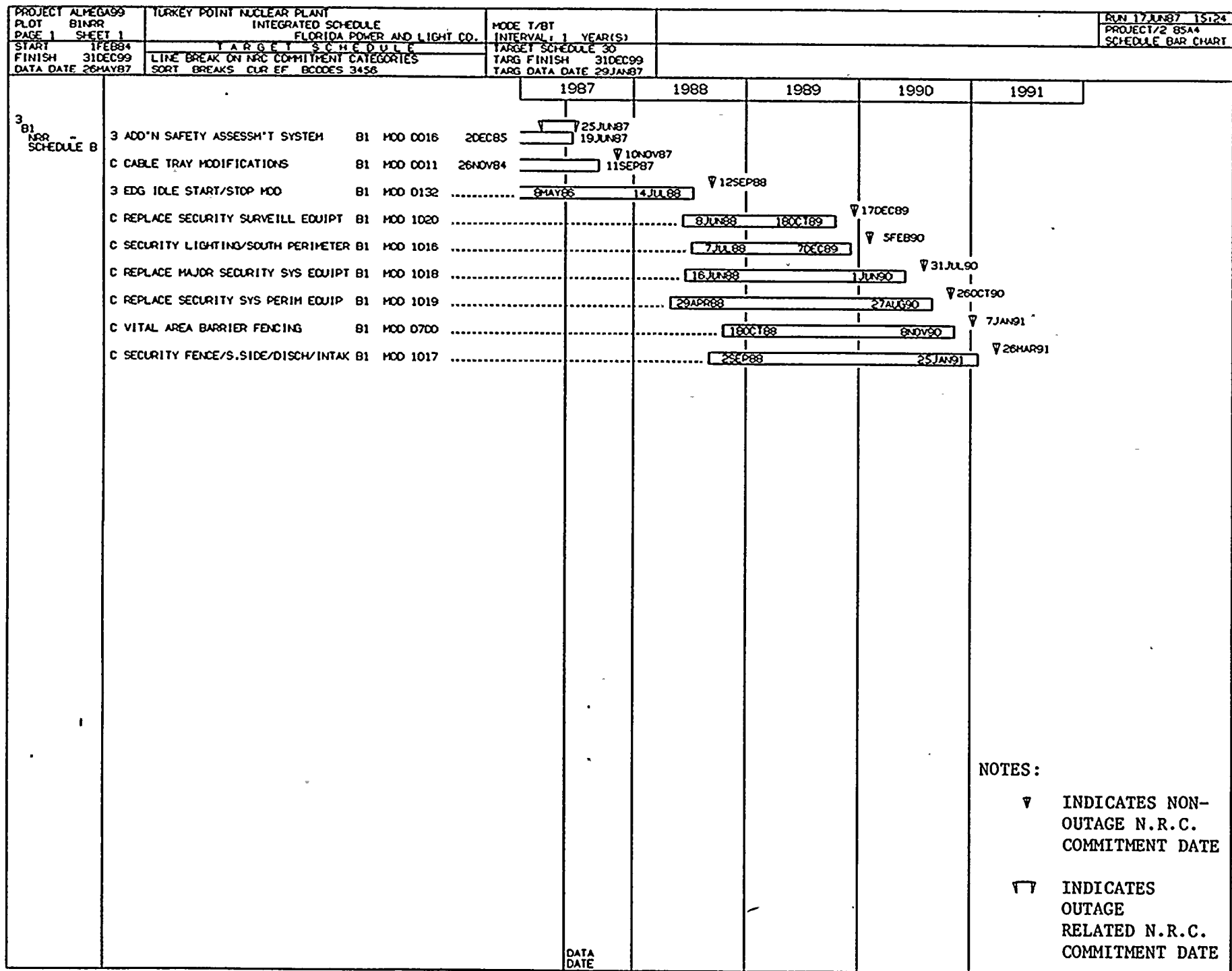
REGULATORY REPORT

JUNE 1987

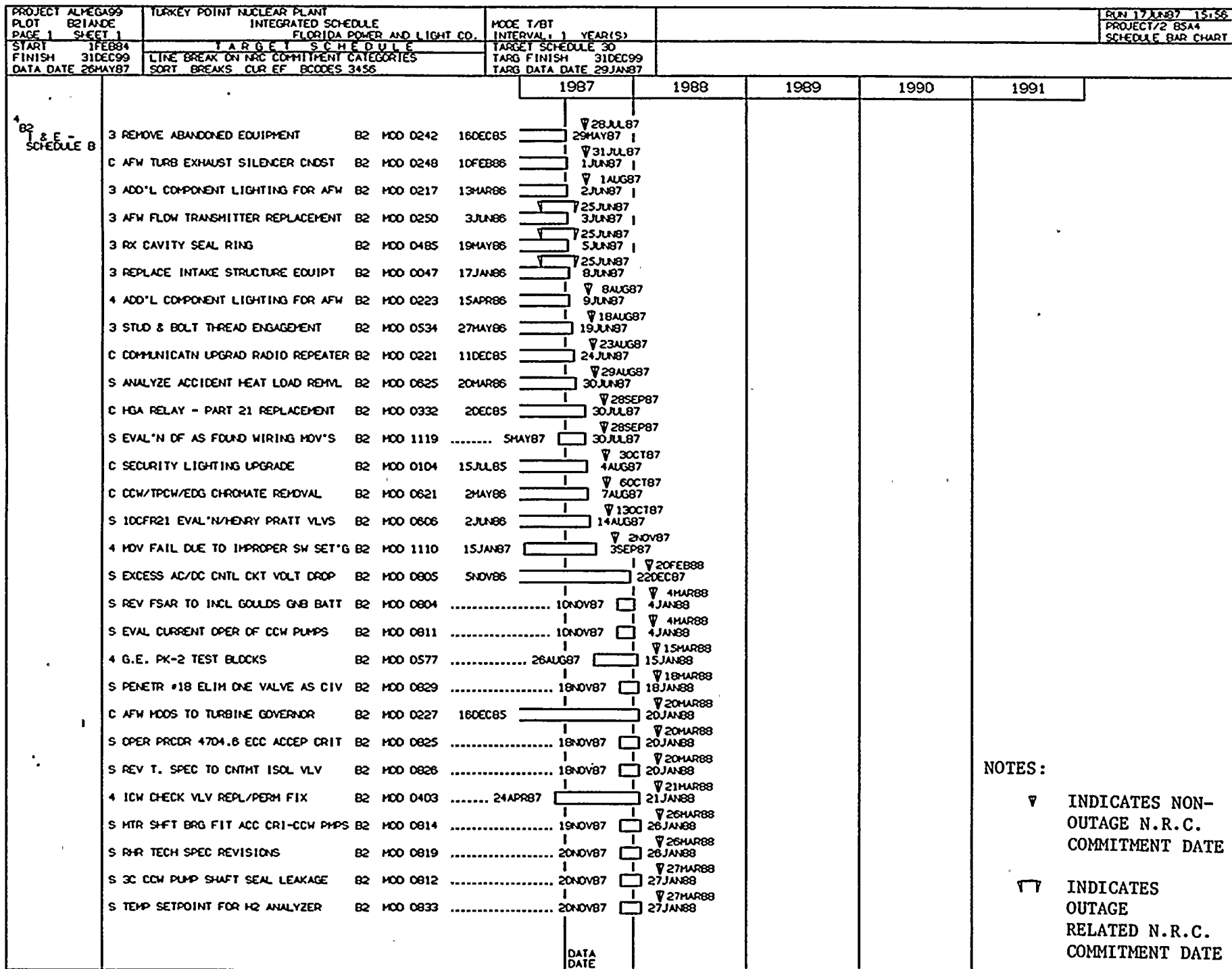








/



NOTES:

▽ INDICATES NON-
OUTAGE N.R.C.
COMMITMENT DATE

▽ INDICATES
OUTAGE
RELATED N.R.C.
COMMITMENT DATE

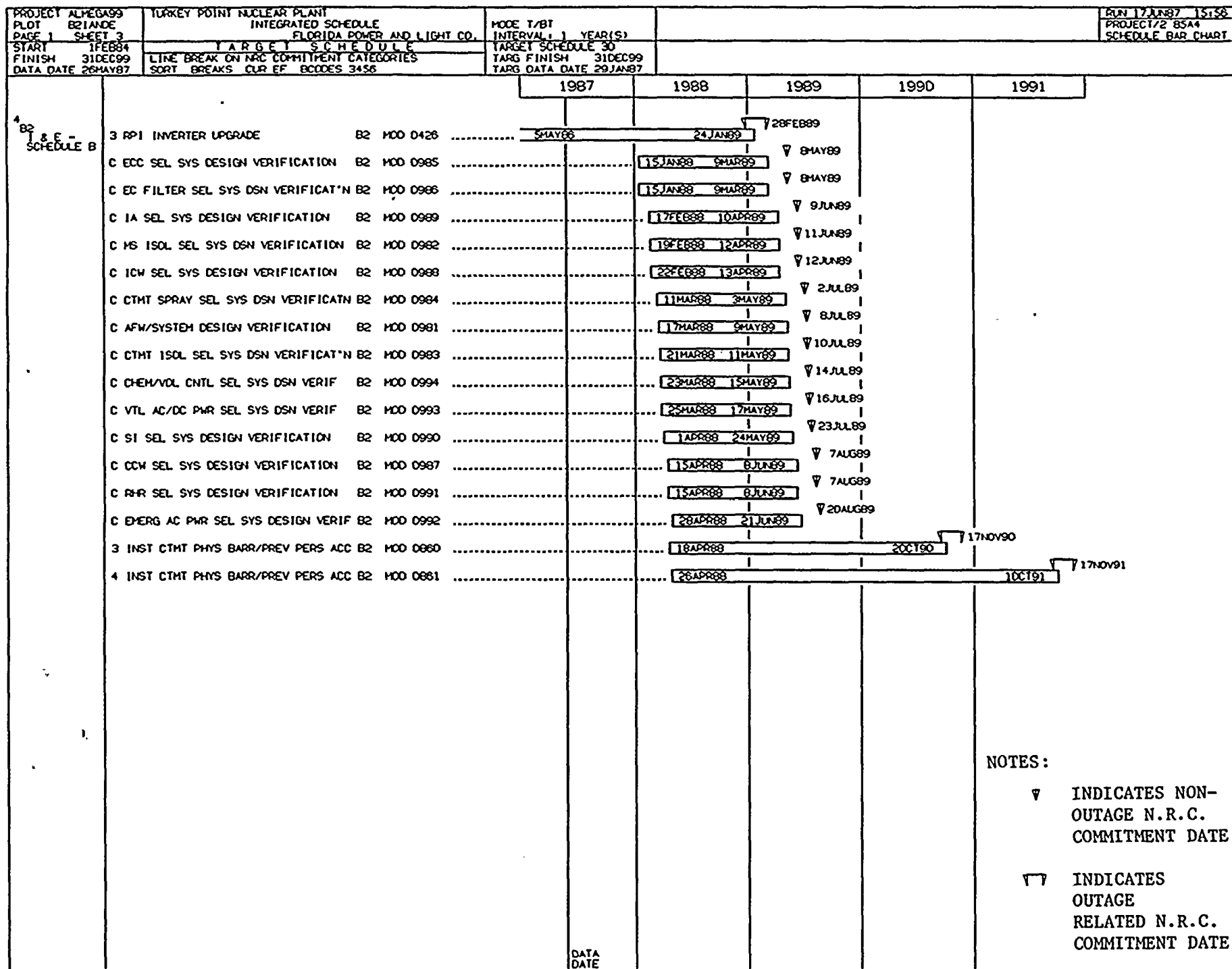
| | | | |
|---------------------|---|--------------------------|---------------------|
| PROJECT ALMEGA99 | TURKEY POINT NUCLEAR PLANT | MODE T/BT | RUN 17 JUN 87 15:56 |
| PLOT B21 AND E | INTEGRATED SCHEDULE | INTERVAL 1 YEAR(S) | PROJECT/2 BSA4 |
| PAGE 1 SHEET 2 | FLORIDA POWER AND LIGHT CO. | TARGET SCHEDULE | SCHEDULE BAR CHART |
| START 1 FEB 84 | LINE BREAK ON NRC COMMITMENT CATEGORIES | TARG FINISH 31 DEC 99 | |
| FINISH 31 DEC 99 | SORT BREAKS CUR EF BCODES 3456 | TARG DATA DATE 29 JAN 87 | |
| DATA DATE 26 MAY 87 | | | |

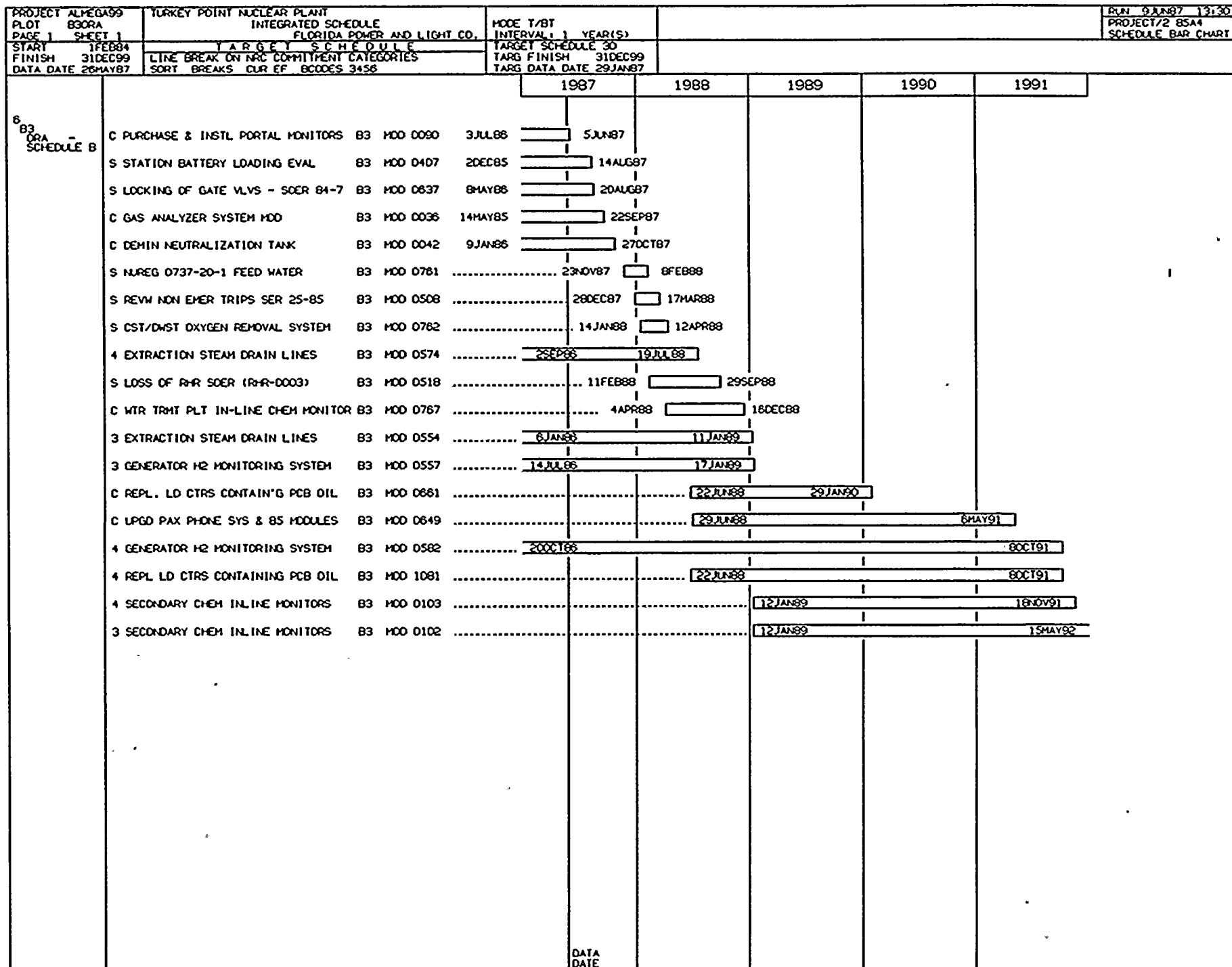
| | | | 1987 | 1988 | 1989 | 1990 | 1991 |
|-----------------------------|---|-----------|-----------|------------------------|------|------|------|
| B2
I & E -
SCHEDULE B | S PENETR 24 CK VLV VS. ISI PROGRAM B2 MOD 0831 | | 20 NOV 87 | 2 APR 88
2 FEB 88 | | | |
| | S MSI VALVE OPEN'G PROBLEM SOLUTION B2 MOD 0836 | | 30 NOV 87 | 8 APR 88
6 FEB 88 | | | |
| | S PENETR 27 ADD RV-62238GHL AS CIV B2 MOD 0830 | | 10 DEC 87 | 9 APR 88
9 FEB 88 | | | |
| | 3 ICW CHECK VLV REPL/PERM FIX B2 MOD 0402 | 16 MAY 86 | | 12 APR 88
12 FEB 88 | | | |
| | S STA BATT LD 1ST RED-PROP T. SPEC B2 MOD 0809 | | 25 NOV 87 | 16 APR 88
16 FEB 88 | | | |
| | S RHR MOTOR SPEC REVISION B2 MOD 0821 | | 30 NOV 87 | 16 APR 88
16 FEB 88 | | | |
| | C INTAKE BUB BUSTER&WATER LVL MEANS B2 MOD 0721 | 1 APR 86 | | 17 APR 88
17 FEB 88 | | | |
| | S ECF DRAIN LOOP SEALS EVAPORATION B2 MOD 0801 | | 25 NOV 87 | 18 APR 88
18 FEB 88 | | | |
| | S RHR VLV OPERABILITY (605 & 758) B2 MOD 0816 | | 27 NOV 87 | 19 APR 88
19 FEB 88 | | | |
| | S PROVIDE NPSH INFO ON RHR PUMPS B2 MOD 0818 | | 27 NOV 87 | 19 APR 88
19 FEB 88 | | | |
| | S PENETR #30 CV-8165 RED INSTR AIR B2 MOD 0832 | | 30 NOV 87 | 22 APR 88
22 FEB 88 | | | |
| | S LK RATE SPEC-ELECT PENET RCP 4160VB2 MOD 0834 | | 30 NOV 87 | 22 APR 88
22 FEB 88 | | | |
| | S MSI DOC. INTERNAL DIMENSIONS B2 MOD 0840 | | 30 NOV 87 | 22 APR 88
22 FEB 88 | | | |
| | S PROC TP221 FOR O&M OF STA BATTERY B2 MOD 0803 | | 10 DEC 87 | 26 APR 88
26 FEB 88 | | | |
| | S RHR VALVE OPERABILITY 864 & OTHER B2 MOD 0820 | | 20 DEC 87 | 29 APR 88
29 FEB 88 | | | |
| | S MSI VERIFY STROKE LENGTH B2 MOD 0837 | | 11 DEC 87 | 30 APR 88
1 MAR 88 | | | |
| | S MSIV/MSOV FOLLOWUP LONG TERM MODS B2 MOD 0639 | | 30 DEC 87 | 28 MAY 88
29 MAR 88 | | | |
| | S CNHMT ISOL SYS STROKE TIME - MOV B2 MOD 0827 | | 18 NOV 87 | 5 JUN 88
6 APR 88 | | | |
| | C 125V DC POWER PARTIAL LOSS B2 MOD 0847 | | 20 JAN 88 | 12 JUN 88
13 APR 88 | | | |
| | C IMPROVE PA SYSTEM AUDIBILITY B2 MOD 0711 | 9 MAR 87 | | 18 JUN 88
19 APR 88 | | | |
| | S MSI REVISE MAINTENANCE PROCEDURES B2 MOD 0839 | | 15 JAN 88 | 8 JUL 88
9 MAY 88 | | | |
| | S CLOSEDOUT IE INFO NOTICE 84-88 B2 MOD 0398 | | 25 FEB 88 | 26 MAY 88
25 JUL 88 | | | |
| | 4 STUD & BOLT THREAD ENGAGEMENT B2 MOD 0999 | | 22 JUN 87 | 1 AUG 88
2 JUN 88 | | | |
| | C EF FLOW SWITCH OPEN ON LOSS POWER B2 MOD 0843 | | 30 NOV 87 | 6 AUG 88
8 JUN 88 | | | |
| | C EDG START'G AIR SYS/ADD AIR DRYER B2 MOD 0610 | | 18 JUL 88 | 13 JUN 88
6 AUG 88 | | | |
| | 4 RPI INVERTER UPGRADE B2 MOD 0785 | | 27 MAY 87 | 23 JUL 88
6 AUG 88 | | | |
| | C EDG EQUIPMENT MODIFICATIONS B2 MOD 0710 | | 31 MAR 88 | 21 OCT 88
22 AUG 88 | | | |
| | C AFW PMP/TURB AREA VITAL BARR. UPG B2 MOD 0222 | | 11 DEC 88 | 11 OCT 88
10 DEC 88 | | | |
| | S TECHNICAL SPECIFICATION IMPLEMENT B2 MOD 0746 | | 1 FEB 88 | 14 OCT 88
13 DEC 88 | | | |
| | | | DATA DATE | | | | |

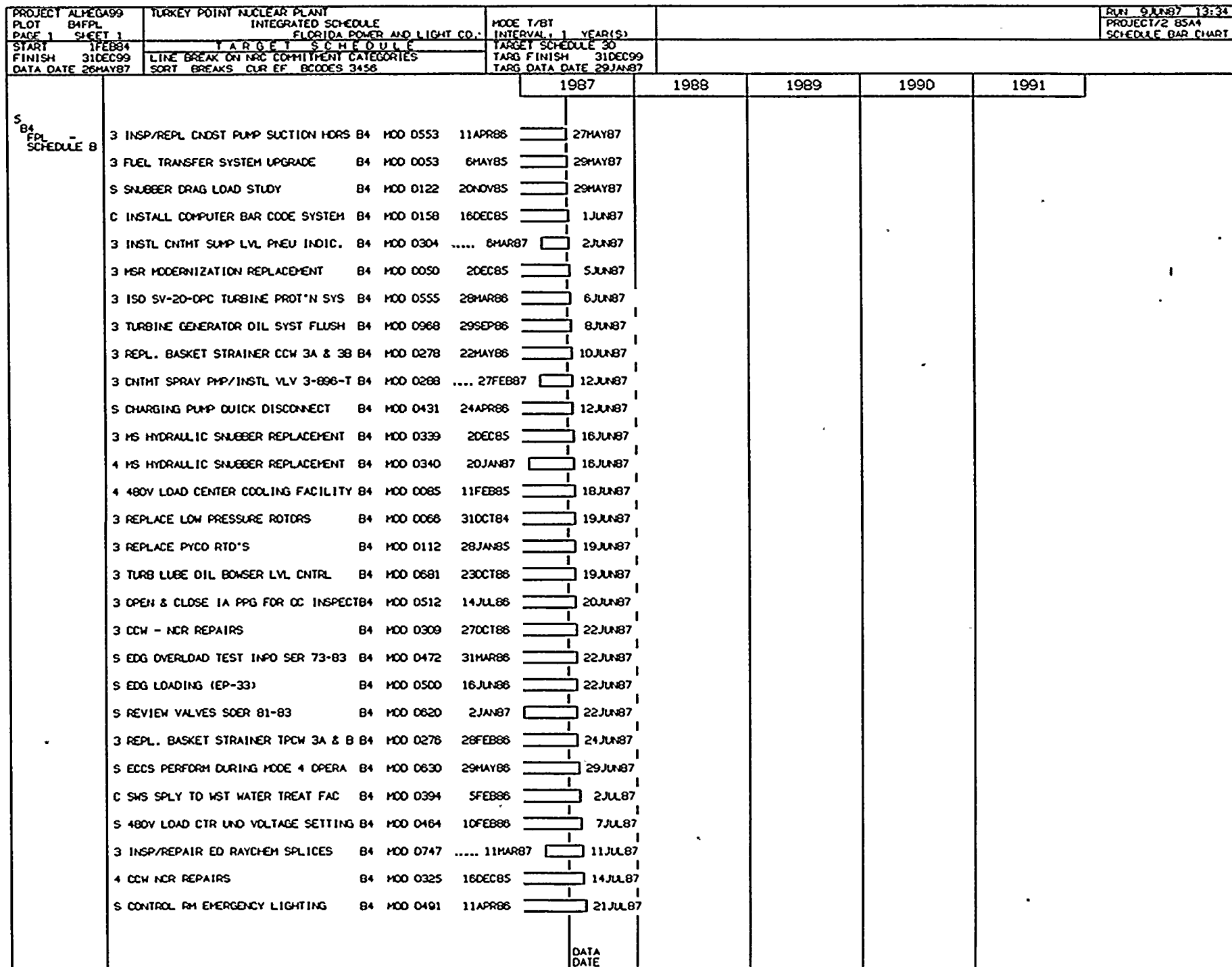
NOTES:

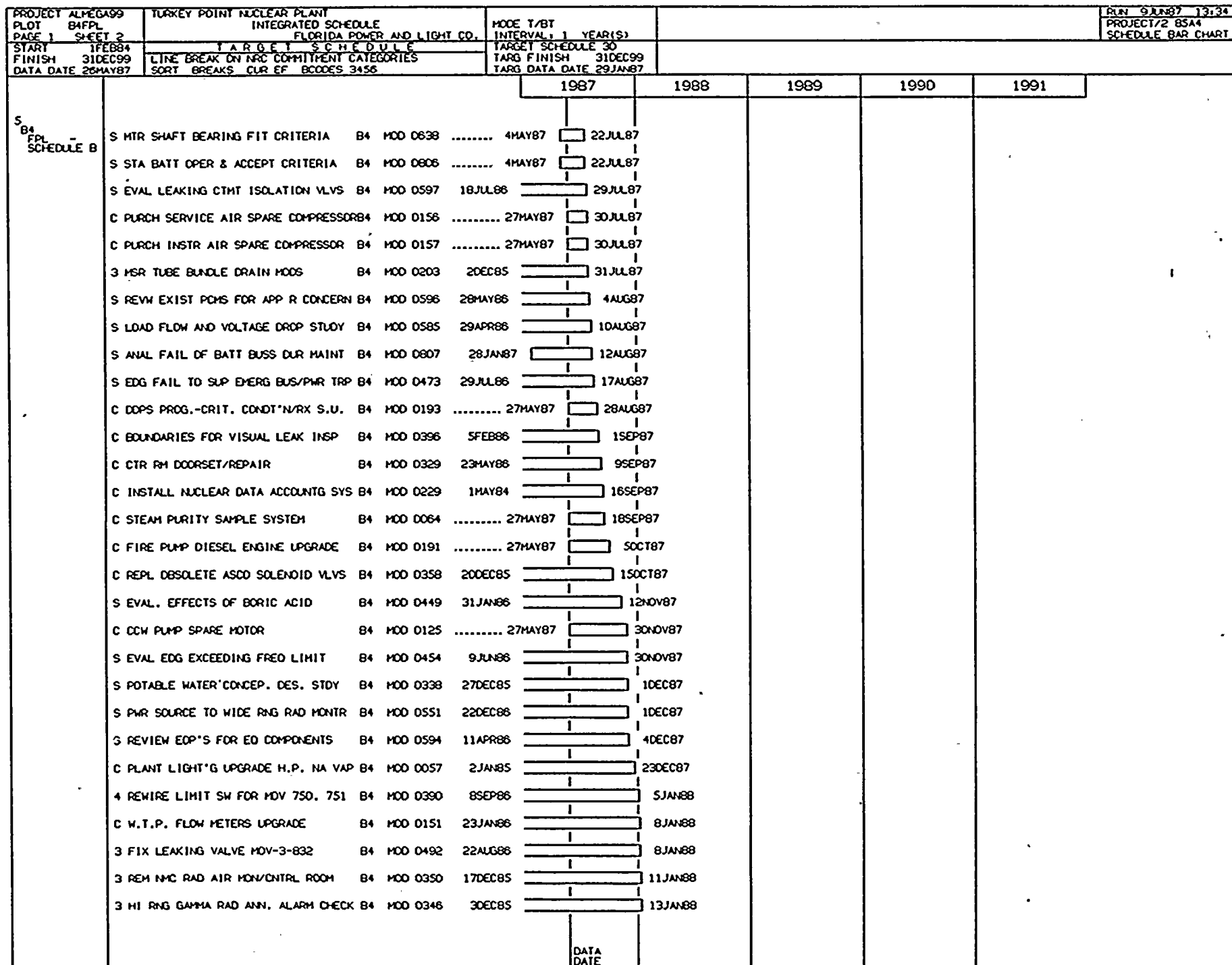
▽ INDICATES NON-OUTAGE N.R.C. COMMITMENT DATE

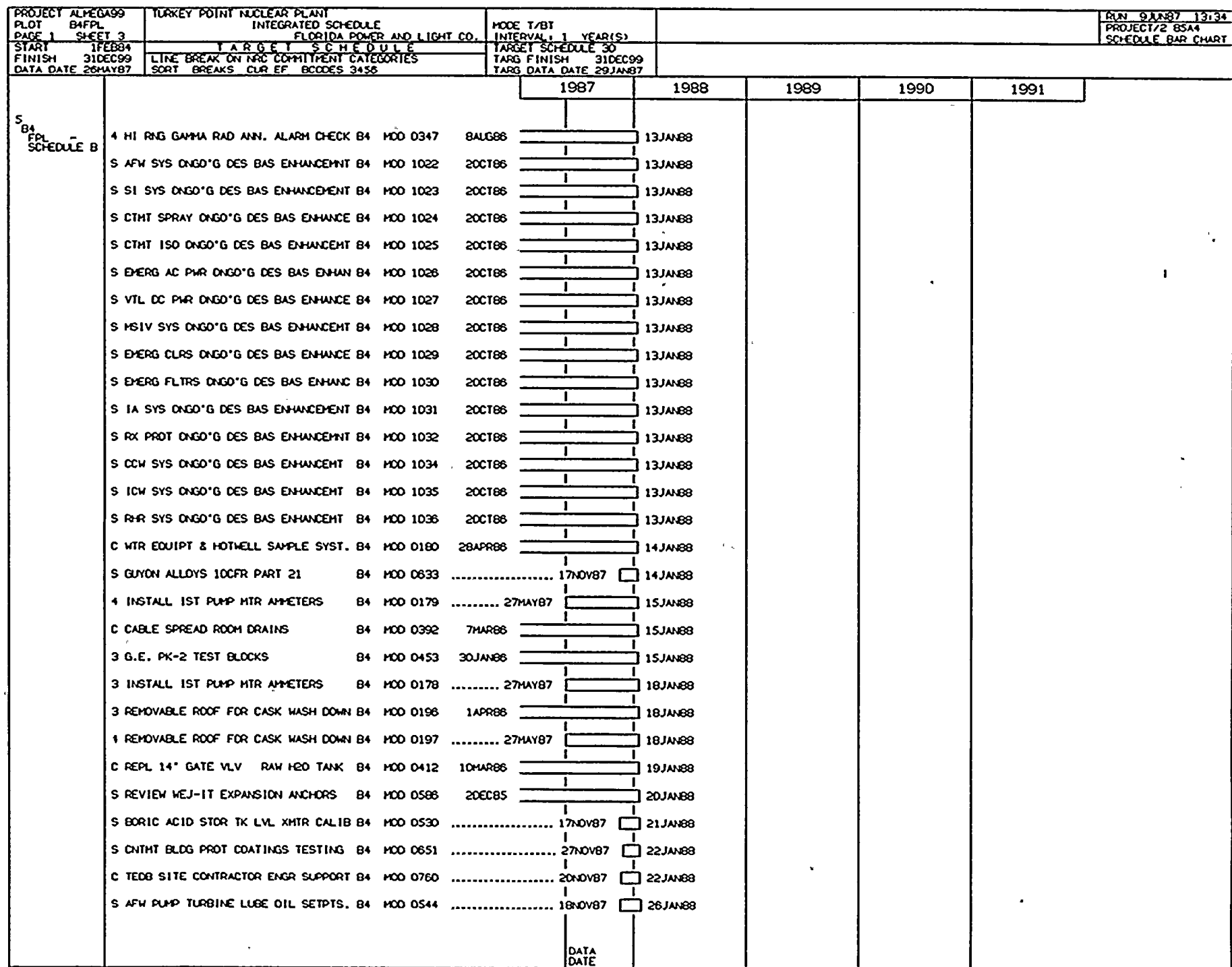
▽ INDICATES OUTAGE RELATED N.R.C. COMMITMENT DATE



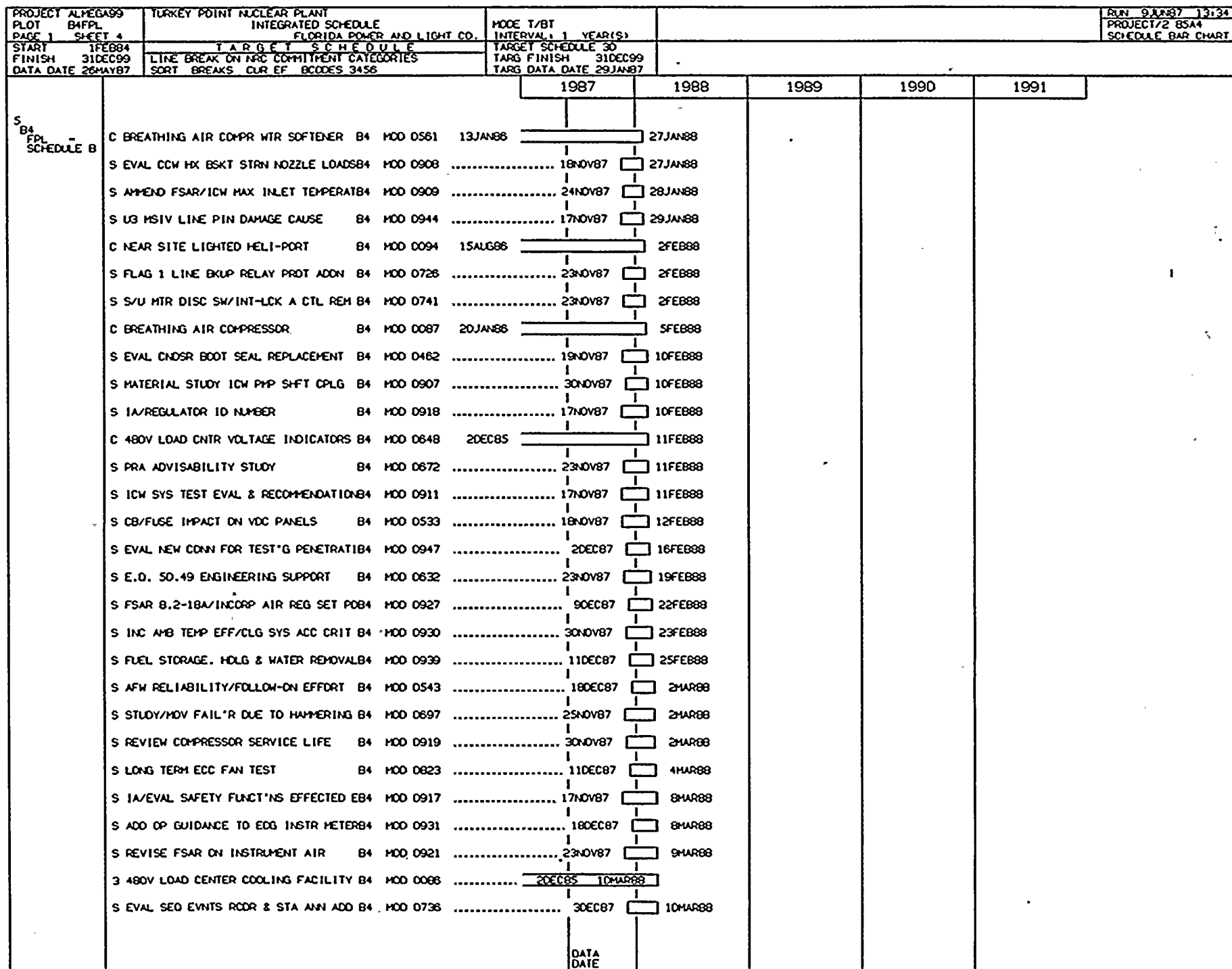


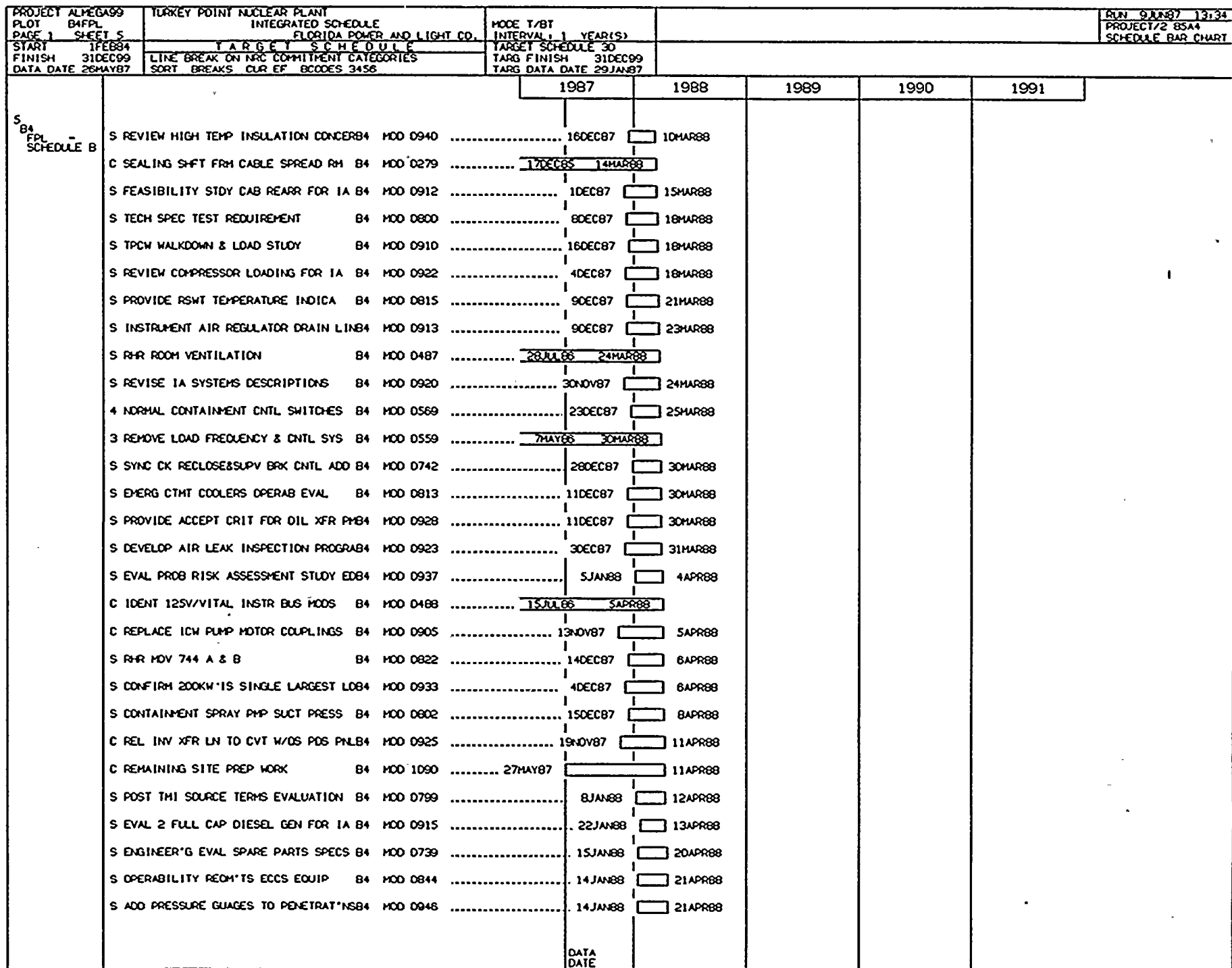


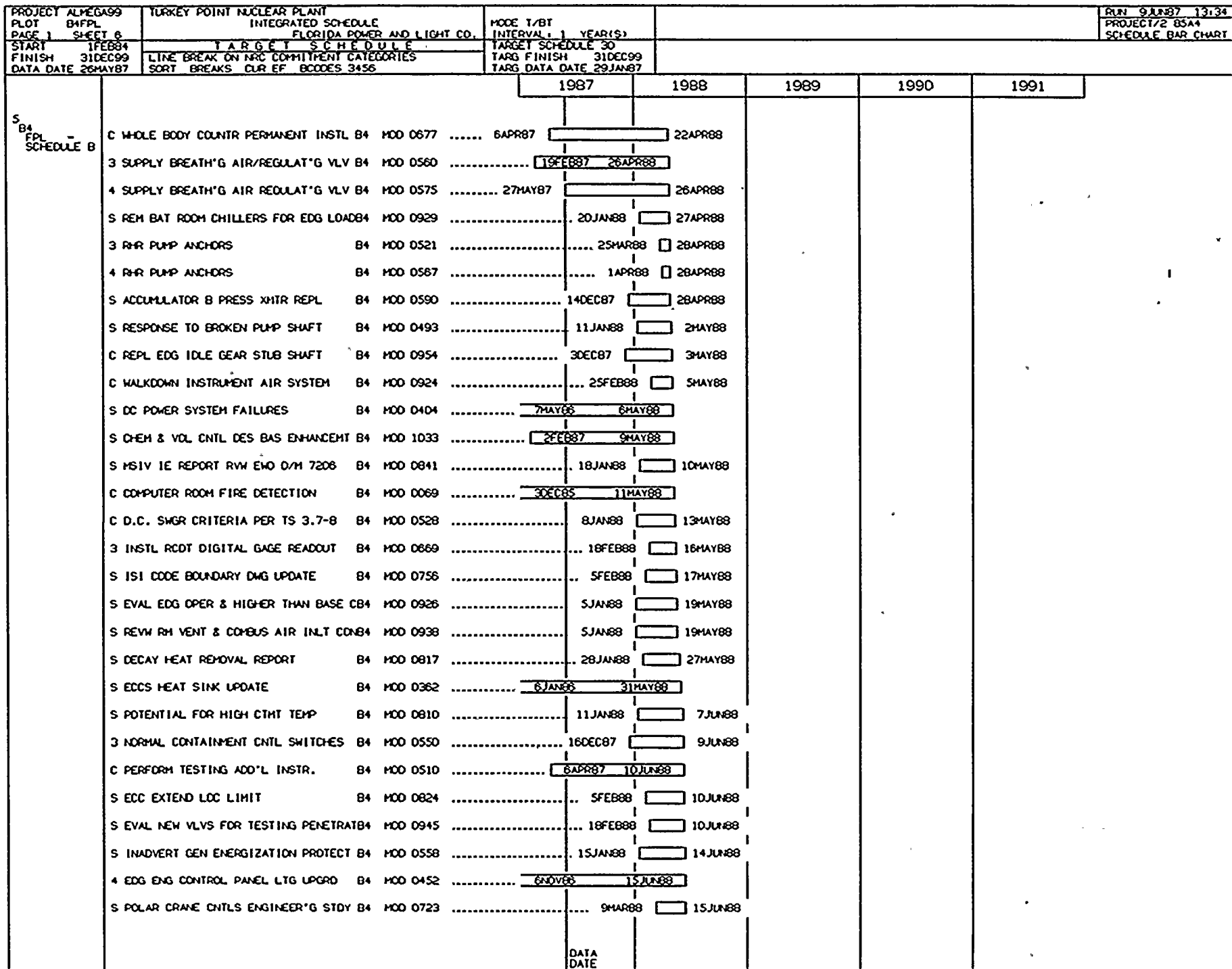


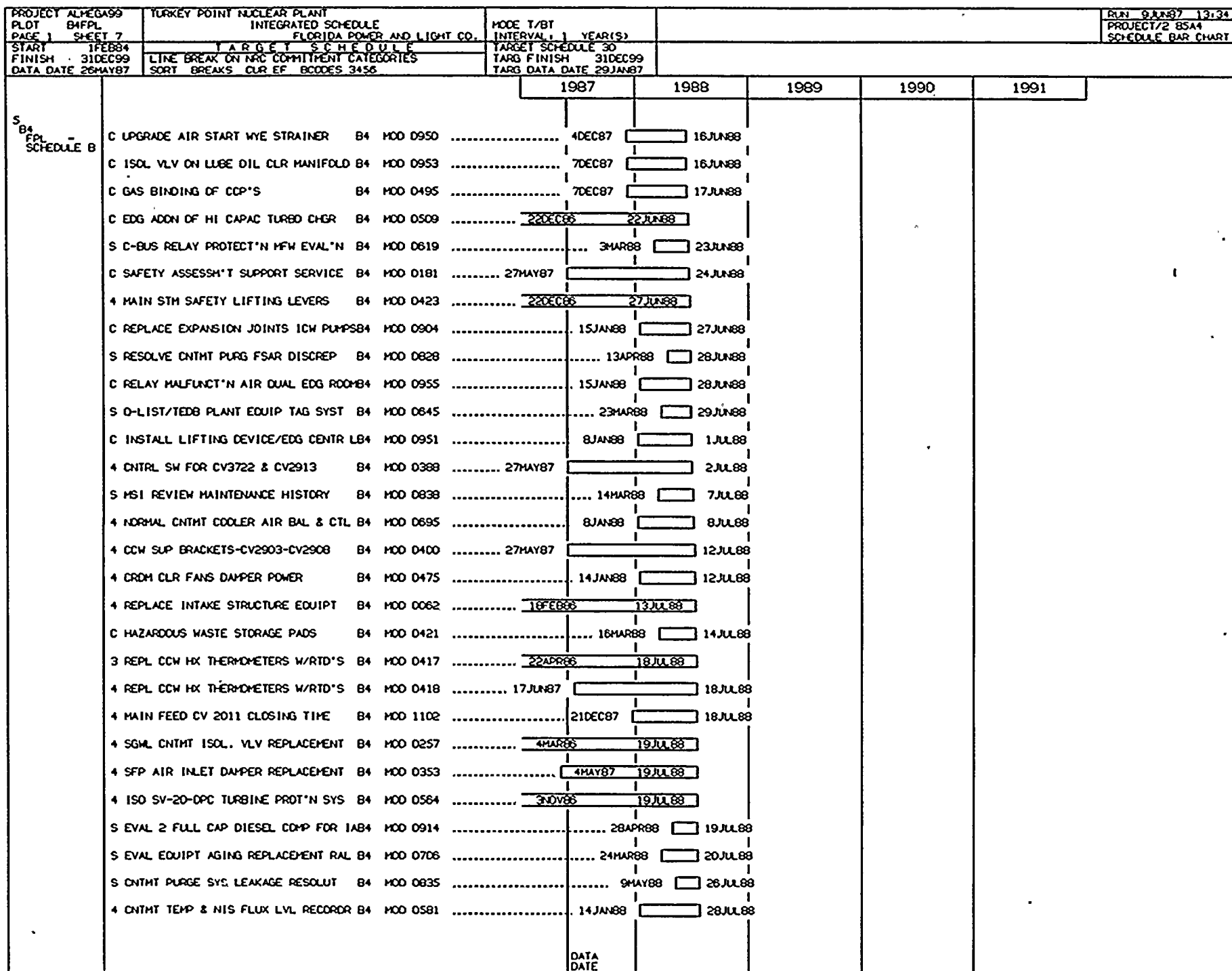


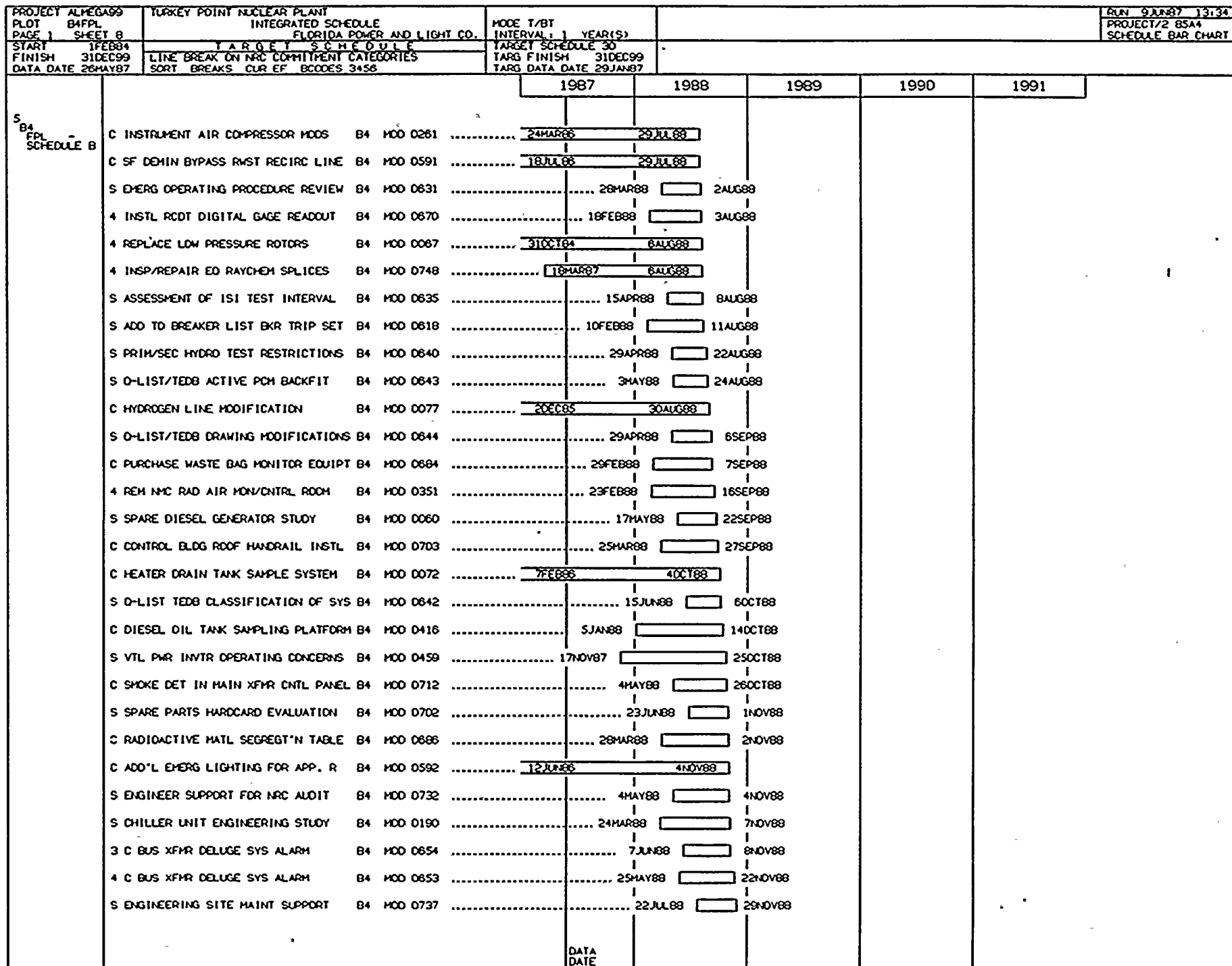


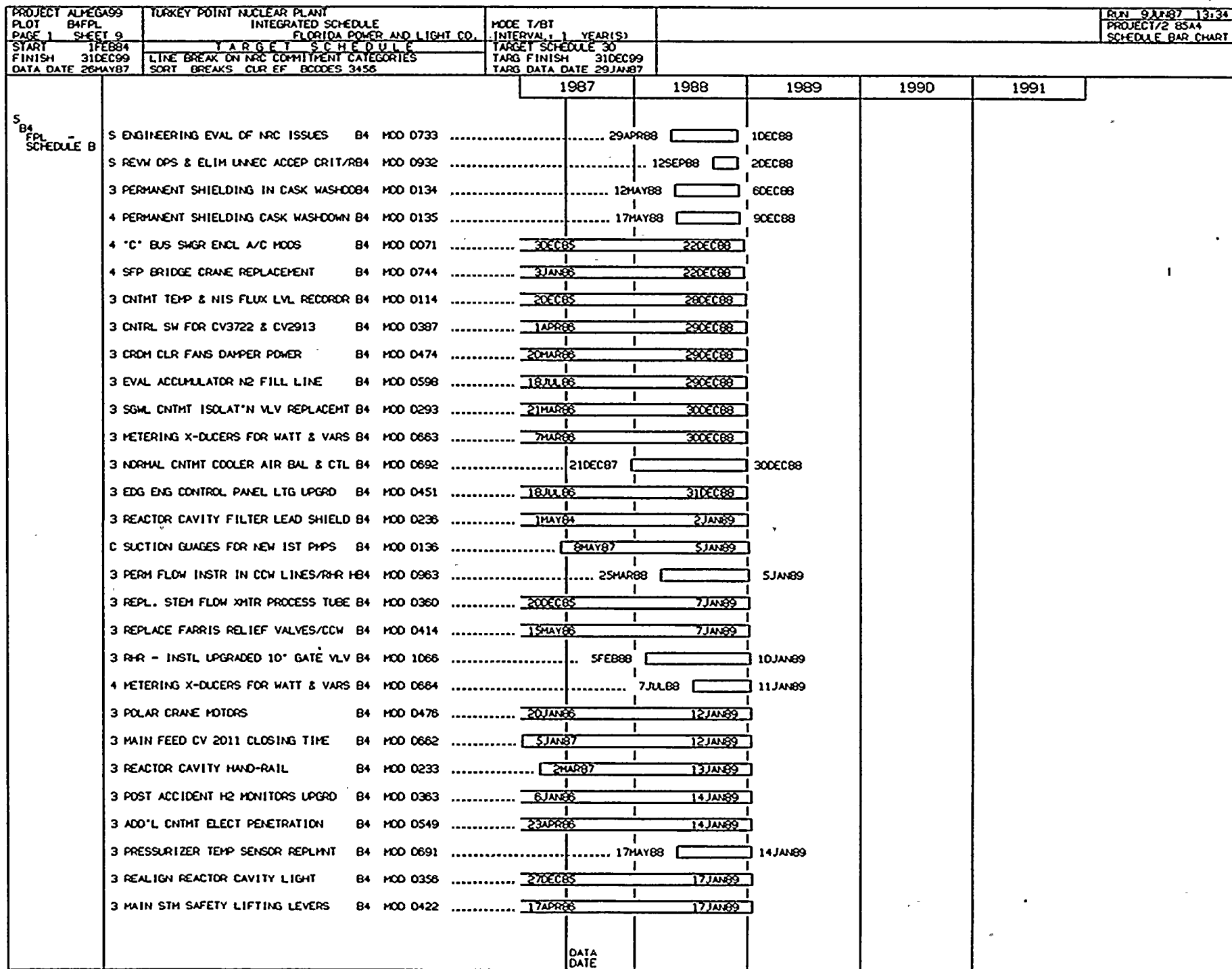


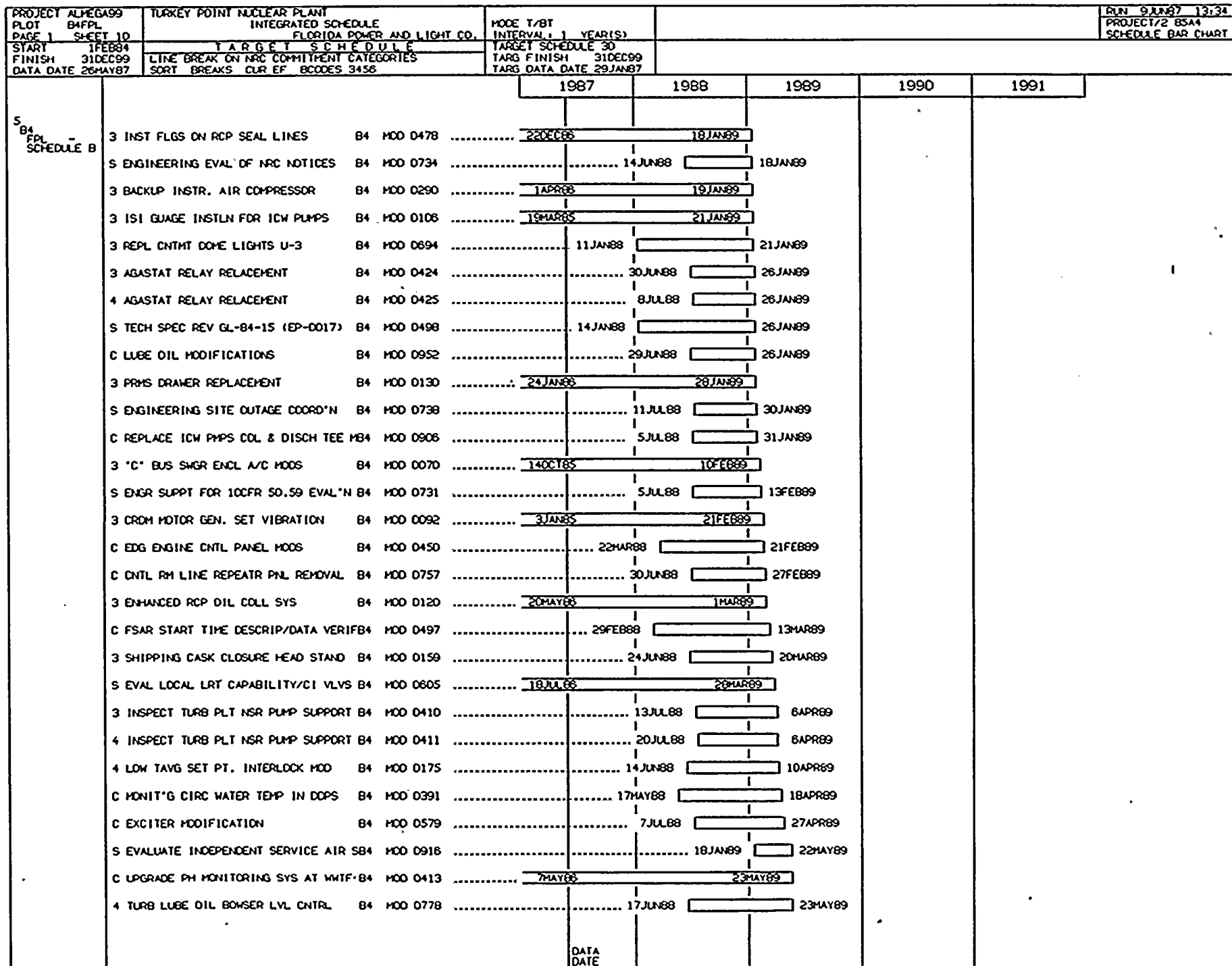


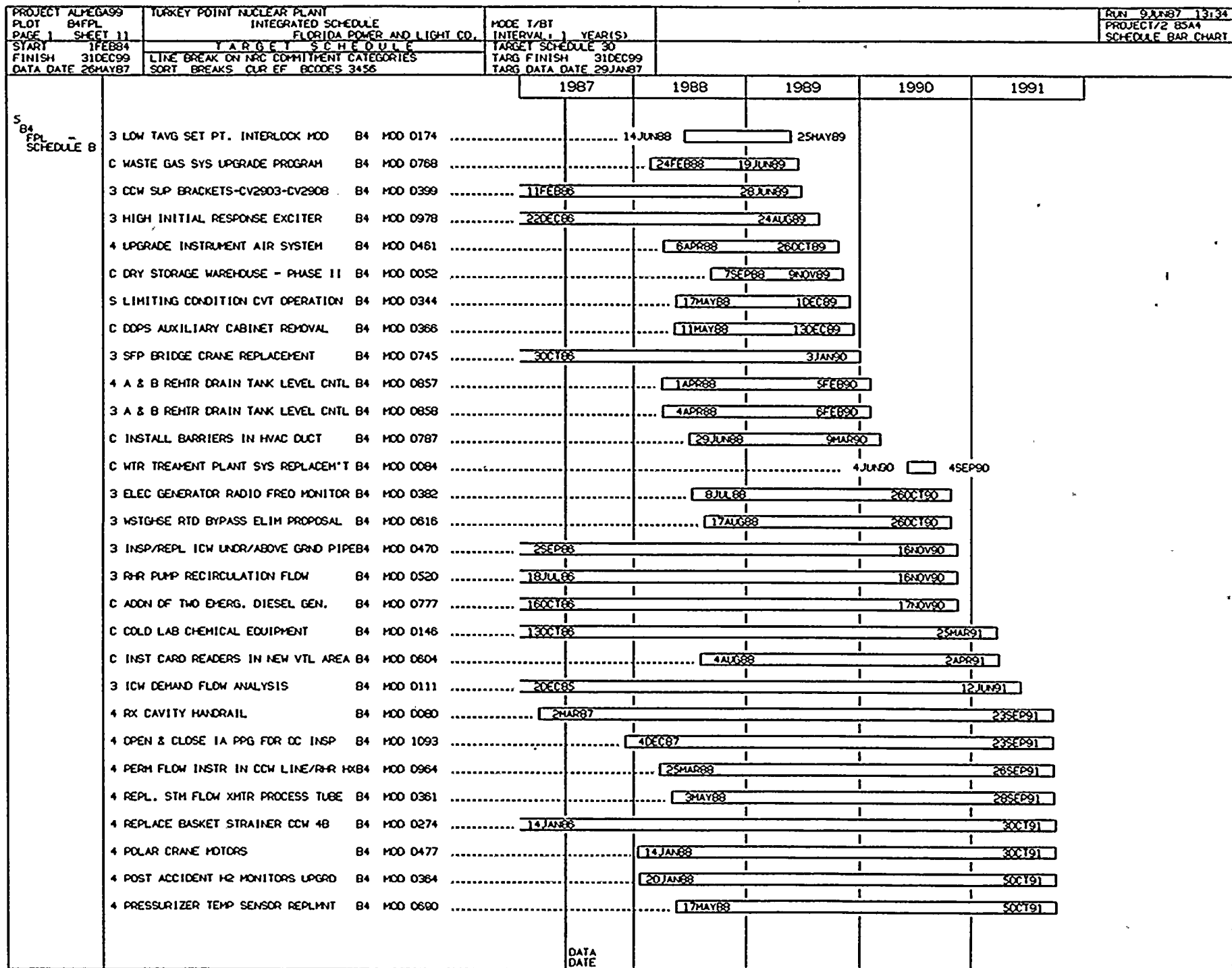












| | | | | | | | | | |
|------------------------------|---|---|-------------|-----------------------------|---------|------------------------|------|--------------------|---------|
| PROJECT ALPHEGA99 | | TURKEY POINT NUCLEAR PLANT | | MODE T/RT | | INTERVAL: 1 YEAR(S) | | RUN 9JAN87 13:34 | |
| PLOT B4FPL | | INTEGRATED SCHEDULE | | FLORIDA POWER AND LIGHT CO. | | TARGET SCHEDULE 30 | | PROJECT/2 BSA4 | |
| PAGE 1 SHEET 12 | | T A R G E T S C H E D U L E | | TARG FINISH 31DEC99 | | TARG DATA DATE 29JAN87 | | SCHEDULE BAR CHART | |
| START 1FEB84 | | LINE BREAK ON NRC COMMITMENT CATEGORIES | | TARG FINISH 31DEC99 | | TARG DATA DATE 29JAN87 | | | |
| FINISH 31DEC99 | | SORT BREAKS CUR EF BCODES 3456 | | | | | | | |
| DATA DATE 26MAY87 | | | | | | | | | |
| | | | | 1987 | 1988 | 1989 | 1990 | 1991 | |
| S
B4
FPL
SCHEDULE B | 4 | ADD'L CNHTM ELECT PENETRATION | B4 MOD 0766 | 3MAR88 | | | | | 50CT91 |
| | 4 | REALIGN REACTOR CAVITY LIGHT | B4 MOD 0357 | 8APR87 | | | | | 80CT91 |
| | 4 | REPL. BASKET STRAINER TPCW 4A & B | B4 MOD 0277 | 15JUL88 | | | | | 90CT91 |
| | 4 | INST FLGS ON RCP SEAL LINES | B4 MOD 0479 | 22OC88 | | | | | 90CT91 |
| | 4 | REPL CNHTM DOME LIGHTS U-4 | B4 MOD 0693 | | 12JAN88 | | | | 120CT91 |
| | 4 | CRDM MOTOR GEN. SET VIBRATION | B4 MOD 0093 | 22NOV85 | | | | | 140CT91 |
| | 4 | PRMS DRAWER REPLACEMENT | B4 MOD 0181 | 24JAN88 | | | | | 190CT91 |
| | 3 | BORIC ACID EVAP PMP UPGRADE | B4 MOD 0237 | 12NOV85 | | | | | 220CT91 |
| | 4 | REPLACE FARRIS RELIEF VALVES/CCW | B4 MOD 0415 | 25SEP88 | | | | | 250CT91 |
| | 4 | WSTG&E RTD BYPASS ELIM PROPOSAL | B4 MOD 0617 | | 1SEP88 | | | | 260CT91 |
| | 4 | INST. CTMT SUMP LVL. PNEU.INDIC. | B4 MOD 0652 | | 5JUL88 | | | | 9NOV91 |
| | 4 | BACKUP INSTR. AIR COMPRESSOR | B4 MOD 0291 | 4APR88 | | | | | 12NOV91 |
| | 4 | RHR PUMP RECIRCULATION FLOW | B4 MOD 0566 | | 28JAN89 | | | | 16NOV91 |
| | 4 | ENHANCED RCP OIL COLL SYS | B4 MOD 0713 | 18NOV88 | | | | | 18NOV91 |
| | 4 | RCP #2 SEAL LEAK-OFF INDICATOR | B4 MOD 0017 | 23OC88 | | | | | 20JAN92 |
| | 4 | SFP OH CRANE ACCESS DOOR SEAL | B4 MOD 0323 | 24MAR88 | | | | | 20JAN92 |
| | 4 | INSP/REPL ICW UNDR/ABOVE GRND PIPE | B4 MOD 0471 | 20CT88 | | | | | 25JAN92 |
| | 4 | HIGH INITIAL RESPONSE EXCITER | B4 MOD 0979 | 9FEB87 | | | | | 17APR92 |
| | | | | | | | | | |
| | | | | | | | | | |
| | | | | | | | | | |
| | | | | | | | | | |
| | | | | | | | | | |
| | | | | | | | | | |
| | | | | | | | | | |
| | | | | | | | | | |
| | | | | | | | | | |
| | | | | | | | | | |
| | | | | | | | | | |
| | | | | | | | | | |
| | | | | | | | | | |
| | | | | | | | | | |
| | | | | | | | | | |
| | | | | | | | | | |
| | | | | | | | | | |
| | | | | | | | | | |
| | | | | | | | | | |
| | | | | | | | | | |
| | | | | | | | | | |
| | | | | | | | | | |
| | | | | | | | | | |
| | | | | | | | | | |
| | | | | | | | | | |
| | | | | | | | | | |
| | | | | | | | | | |
| | | | | | | | | | |
| | | | | | | | | | |
| | | | | | | | | | |
| | | | | | | | | | |
| | | | | | | | | | |
| | | | | | | | | | |
| | | | | | | | | | |
| | | | | | | | | | |
| | | | | | | | | | |
| | | | | | | | | | |
| | | | | | | | | | |
| | | | | | | | | | |
| | | | | | | | | | |
| | | | | | | | | | |
| | | | | | | | | | |
| | | | | | | | | | |
| | | | | | | | | | |
| | | | | | | | | | |
| | | | | | | | | | |
| | | | | | | | | | |
| | | | | | | | | | |
| | | | | | | | | | |
| | | | | | | | | | |
| | | | | | | | | | |
| | | | | | | | | | |
| | | | | | | | | | |
| | | | | | | | | | |
| | | | | | | | | | |
| | | | | | | | | | |
| | | | | | | | | | |
| | | | | | | | | | |
| | | | | | | | | | |
| | | | | | | | | | |
| | | | | | | | | | |
| | | | | | | | | | |
| | | | | | | | | | |
| | | | | | | | | | |
| | | | | | | | | | |
| | | | | | | | | | |
| | | | | | | | | | |
| | | | | | | | | | |
| | | | | | | | | | |
| | | | | | | | | | |
| | | | | | | | | | |
| | | | | | | | | | |
| | | | | | | | | | |
| | | | | | | | | | |
| | | | | | | | | | |
| | | | | | | | | | |
| | | | | | | | | | |
| | | | | | | | | | |
| | | | | | | | | | |
| | | | | | | | | | |
| | | | | | | | | | |
| | | | | | | | | | |
| | | | | | | | | | |
| | | | | | | | | | |
| | | | | | | | | | |
| | | | | | | | | | |
| | | | | | | | | | |
| | | | | | | | | | |
| | | | | | | | | | |
| | | | | | | | | | |
| | | | | | | | | | |
| | | | | | | | | | |
| | | | | | | | | | |
| | | | | | | | | | |
| | | | | | | | | | |
| | | | | | | | | | |
| | | | | | | | | | |
| | | | | | | | | | |
| | | | | | | | | | |
| | | | | | | | | | |
| | | | | | | | | | |
| | | | | | | | | | |
| | | | | | | | | | |
| | | | | | | | | | |
| | | | | | | | | | |
| | | | | | | | | | |
| | | | | | | | | | |
| | | | | | | | | | |
| | | | | | | | | | |
| | | | | | | | | | |
| | | | | | | | | | |