

REGULATORY INFORMATION DISTRIBUTION SYSTEM (RIDS)

ACCESSION NBR: 8705060346 DOC. DATE: 87/04/27 NOTARIZED: NO DOCKET #
 FACIL: 50-250 Turkey Point Plant, Unit 3, Florida Power and Light C 05000250
 50-251 Turkey Point Plant, Unit 4, Florida Power and Light C 05000251
 AUTH. NAME AUTHOR AFFILIATION
 WOODY, C. O. Florida Power & Light Co.
 RECIP. NAME RECIPIENT AFFILIATION
 Document Control Branch (Document Control Desk)

SUBJECT: Forwards intergrated schedule as update to 861219
 application for amend to Licenses DPR-31 & DPR-41. Issuance
 of amend within 1 month anticipated.

DISTRIBUTION CODE: A001D COPIES RECEIVED: LTR 1 ENCL 1 SIZE: 32
 TITLE: OR Submittal: General Distribution

NOTES:

	RECIPIENT ID CODE/NAME	COPIES LTTR ENCL	RECIPIENT ID CODE/NAME	COPIES LTTR ENCL
	PD2-2 LA	1 0	PD2-2 PD	5 5
	McDONALD, D	1 1		
INTERNAL:	ARM/DAF/LFMB	1 0	NRR/DEST/ADE	1 1
	NRR/DEST/ADS	1 1	NRR/DOEA/TSB	1 1
	NRR/PMAS/ILRB	1 1	OGC/HDS2	1 0
	REG FILE 01	1 1		
EXTERNAL:	EG&O BRUSKE, S	1 1	LPDR	1 1
	NRC PDR	1 1	NSIC	1 1

1. **ALCO**
2. **COLO**
3. **COLO**

SECRET

10-10-68

1000

[illegible][illegible][illegible]

$\frac{1}{2} \left(\frac{1}{2} \right) = \frac{1}{4}$



FLORIDA POWER & LIGHT COMPANY

APRIL 27 1987

L-87-182

Office of Nuclear Reactor Regulation
Attn: Document Control Desk
Washington, D.C. 20555

Gentlemen:

Re: TURKEY POINT UNITS 3 and 4
DOCKET Nos. 50-250 and 50-251
INTEGRATED SCHEDULE

Enclosed please find a copy of the current Turkey Point Integrated Schedule. This schedule is provided as the update to our amendment request of December 19, 1986 (L-86-519) and is the correct baseline schedule for the forthcoming Integrated Schedule amendment. The plan and process for the Turkey Point Integrated Schedule amendment remain unchanged from our December 19, 1986 request, i.e., ours follows the basic Iowa Electric type of plan.

For your review convenience we have sorted the schedule by category and have placed commitment date diamonds on the A and B NRC commitments that are non-outage related. It is understood that commitments that must be completed during a refueling outage are automatically tied to the last day of the applicable plant outage per the schedule.

Further, it remains our understanding per our original submittal letter of December 19, 1986, upon approval of our license amendment any outstanding confirmatory orders would be rescinded and the associated work would be conveyed to and controlled by the Integrated Schedule.

Based on our understanding of the remaining NRC review and processing of our Integrated Schedule submittal we anticipate issuance of the amendment within approximately a month. Accordingly, we have issued the attached Integrated Schedule within FPL as the master Turkey Point schedule for all activities contained therein. Please note that the commitment dates for B category NRC items supersede any existing NRC commitment dates made prior to this date.

We look forward to this new and cooperative method of planning work for our Turkey Point nuclear units. Please advise us of your comments or need for additional assistance.

Yours truly,

C. O. Woody

COW/JNB/pm

Attachment

cc: Dr. J. Nelson Grace, Regional Administrator, USNRC, Region II
Senior Resident Inspector, USNRC, Turkey Point Plant

JRL5/032/I

8705060346 870427
PDR ADCK 05000250
P PDR



1 2 3 4



1 2 3 4

1 2 3 4

1 2 3 4

1 2 3 4

1 2 3 4

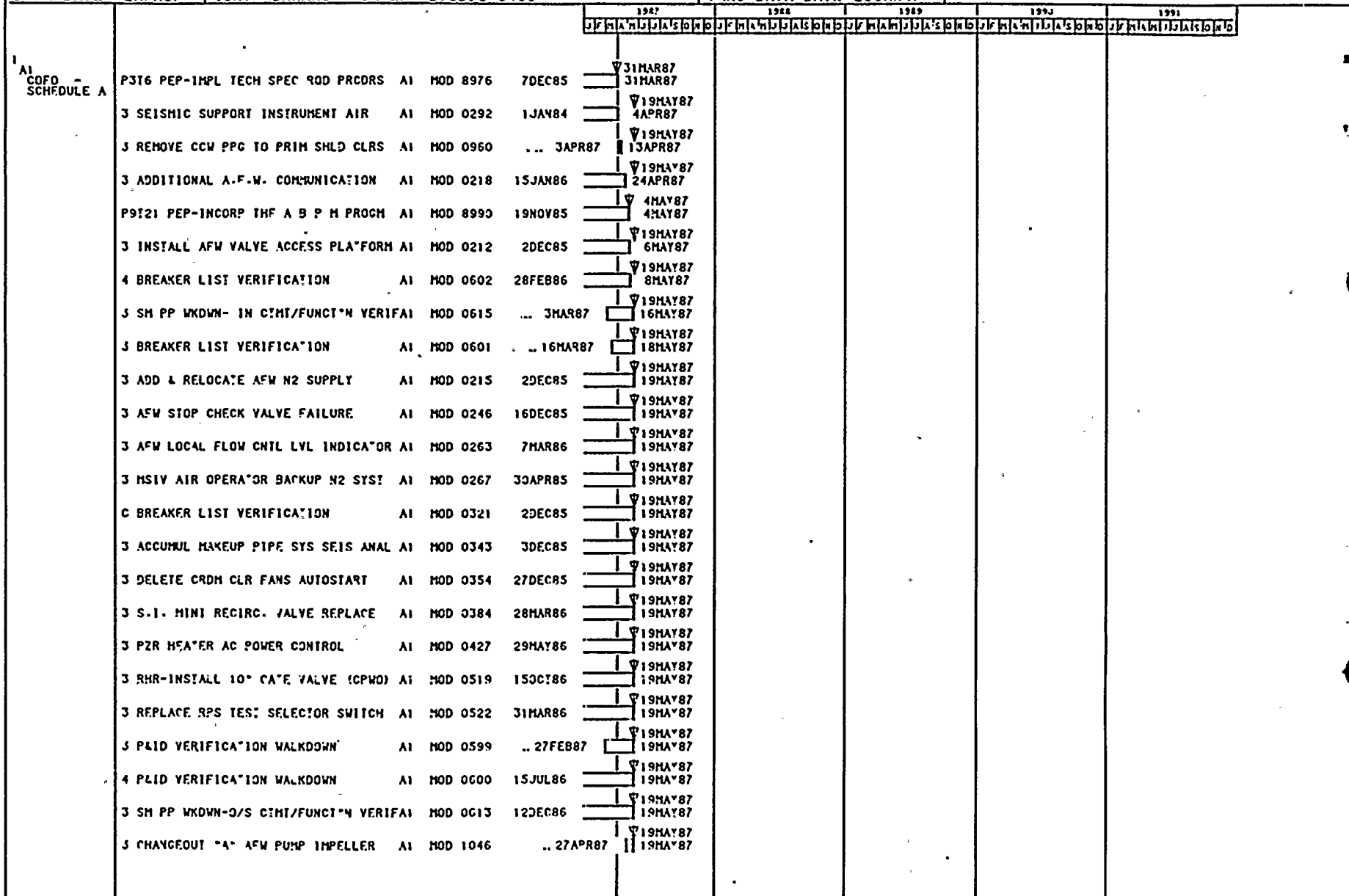
1 2 3 4

1 2 3 4

1 2 3 4

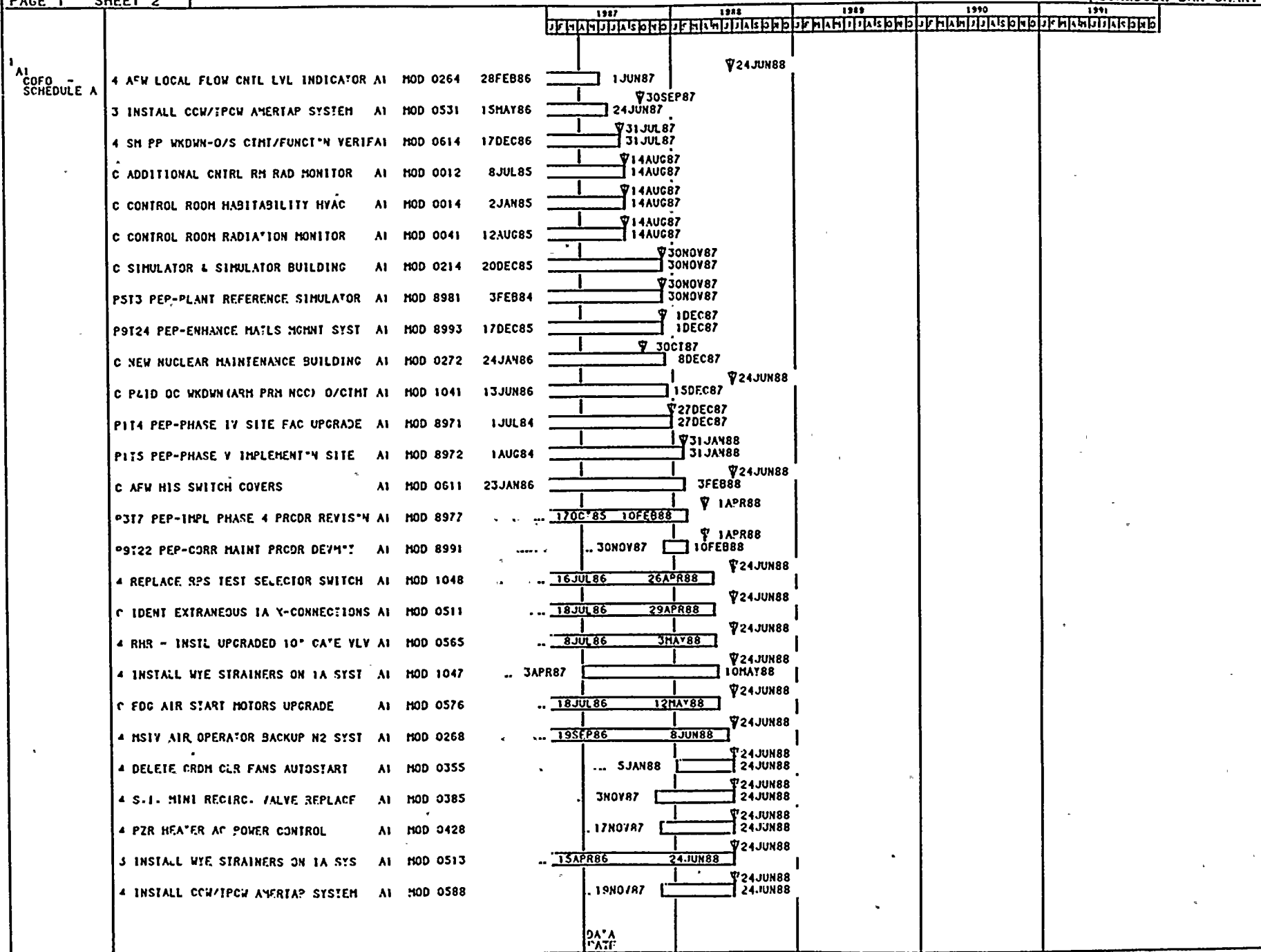
1 2 3 4

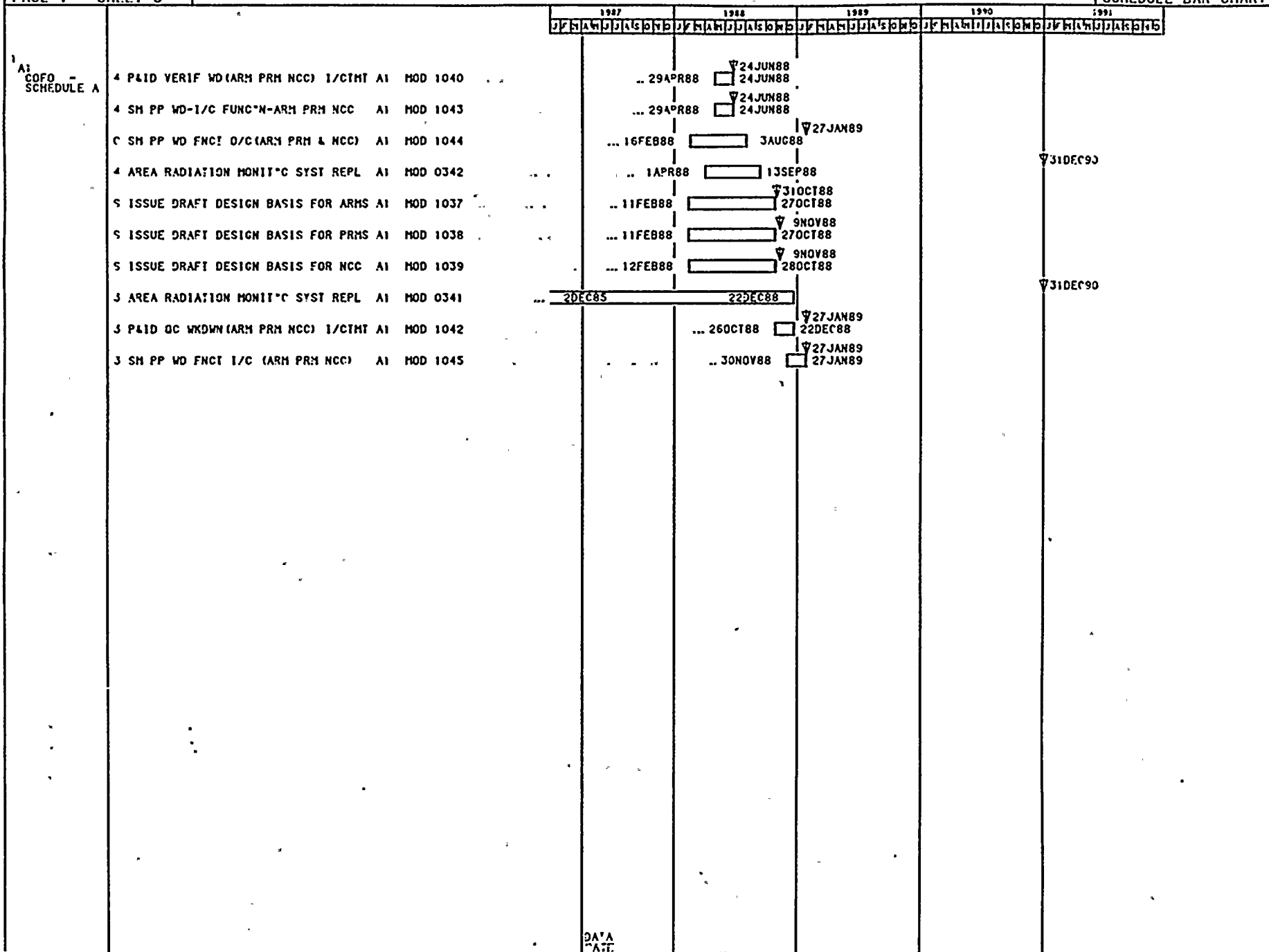
PROJECT: JALMEGA	TURKEY POINT NUCLEAR PLANT	MODE 1/B	RUN 12APR87 13-21
PLOT AICFOFO	INTEGRATED SCHEDULE	INTERVAL: 1 MONTH(S)	PROJECT/2 85A4
PAGE 1 SHEET 1	FLORIDA POWER AND LIGHT CO.		SCHEDULE BAR CHART
START 1FEB84	T A R G E T S C H E D U L E	TARGET SCHEDULE 3	
FINISH 31DEC99	LINE BREAK ON NRC CATEGORY TYPES	TARG FINISH 31DEC99	
DATA DATE 2APR87	SORT BREAKS CUR EF 9CODES 3456	TARG DATA DATE 29JAN87	



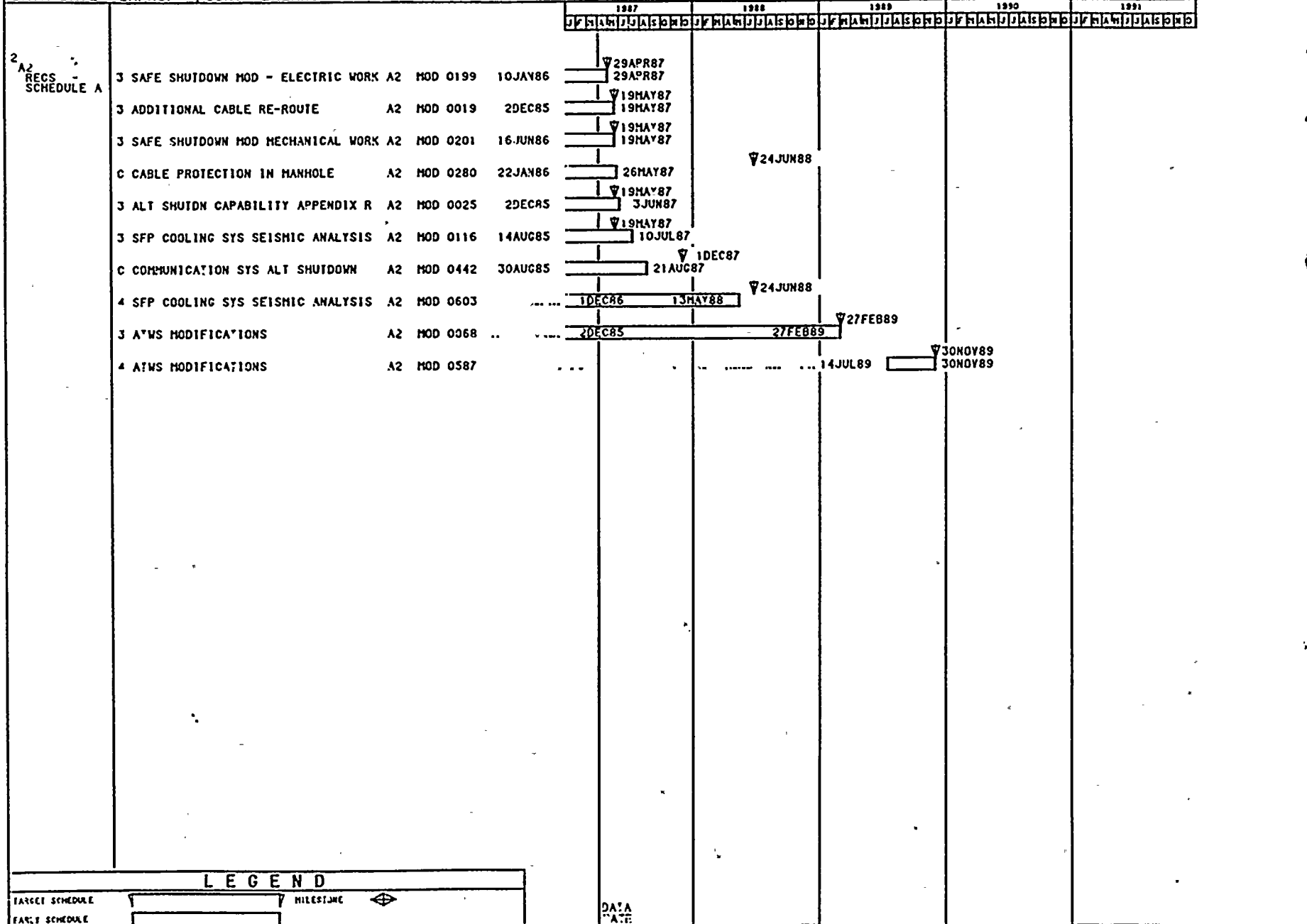
LEGEND	
TARGET SCHEDULE	MILESTONE
EARLY SCHEDULE	

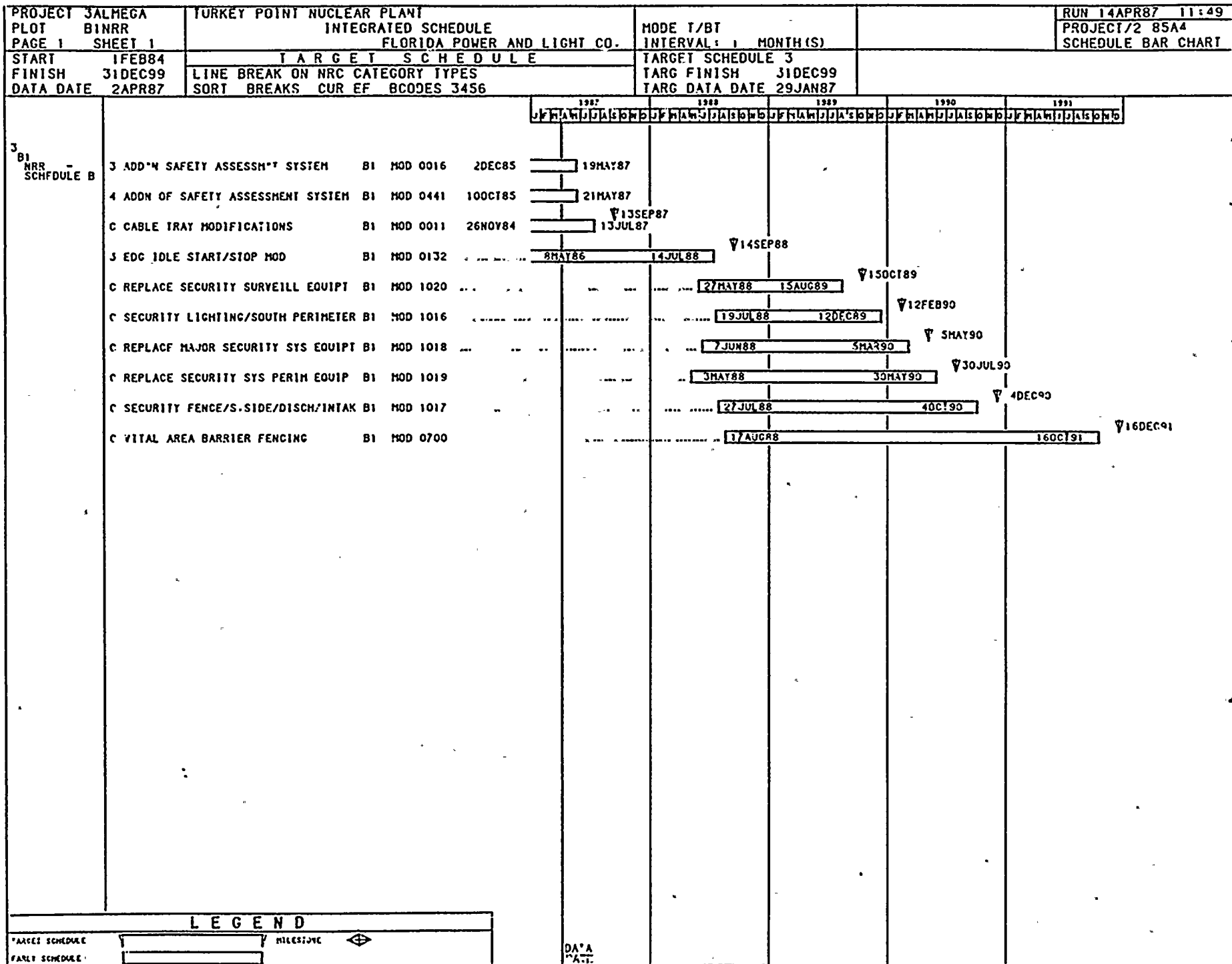
DATA
DATE



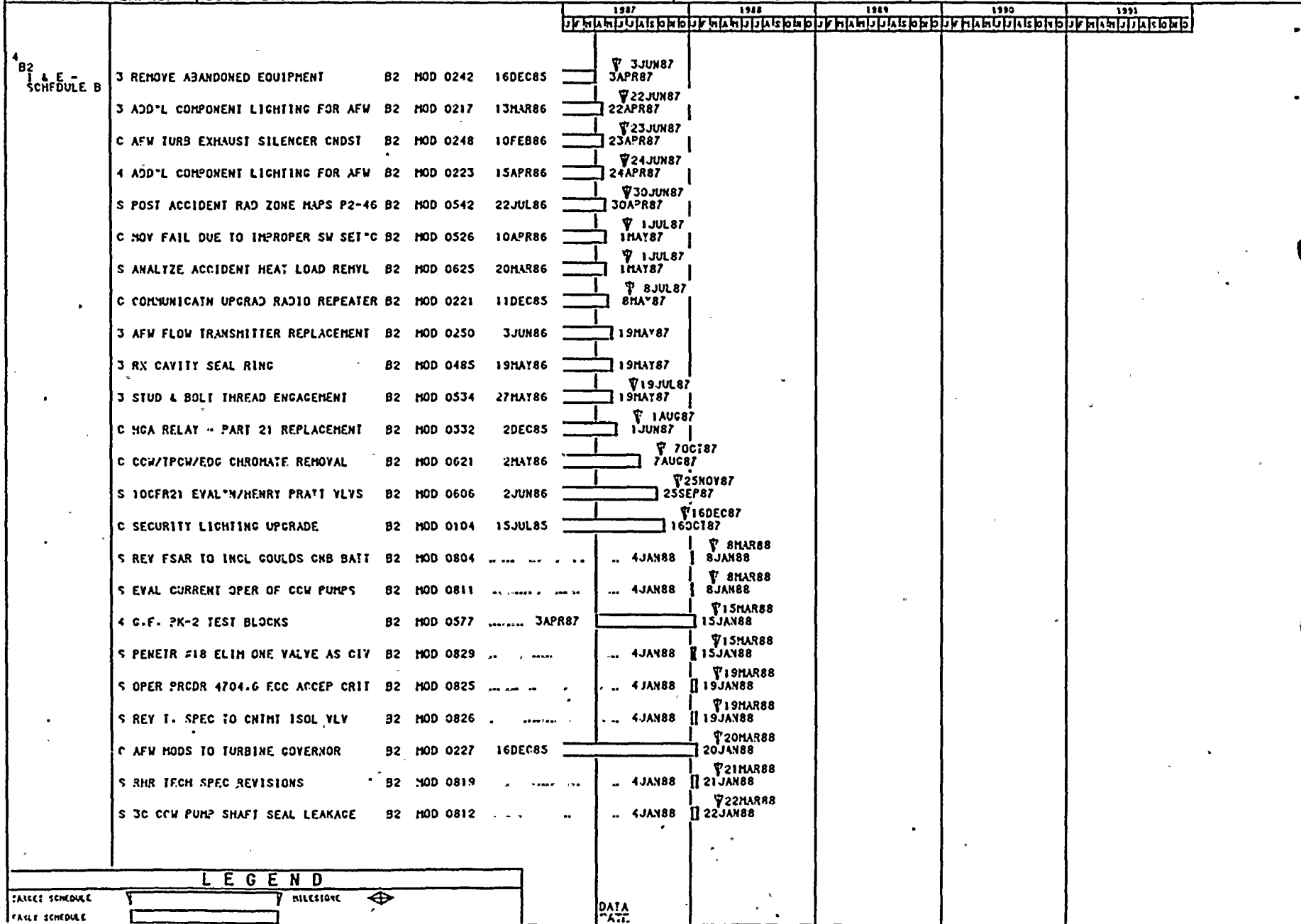


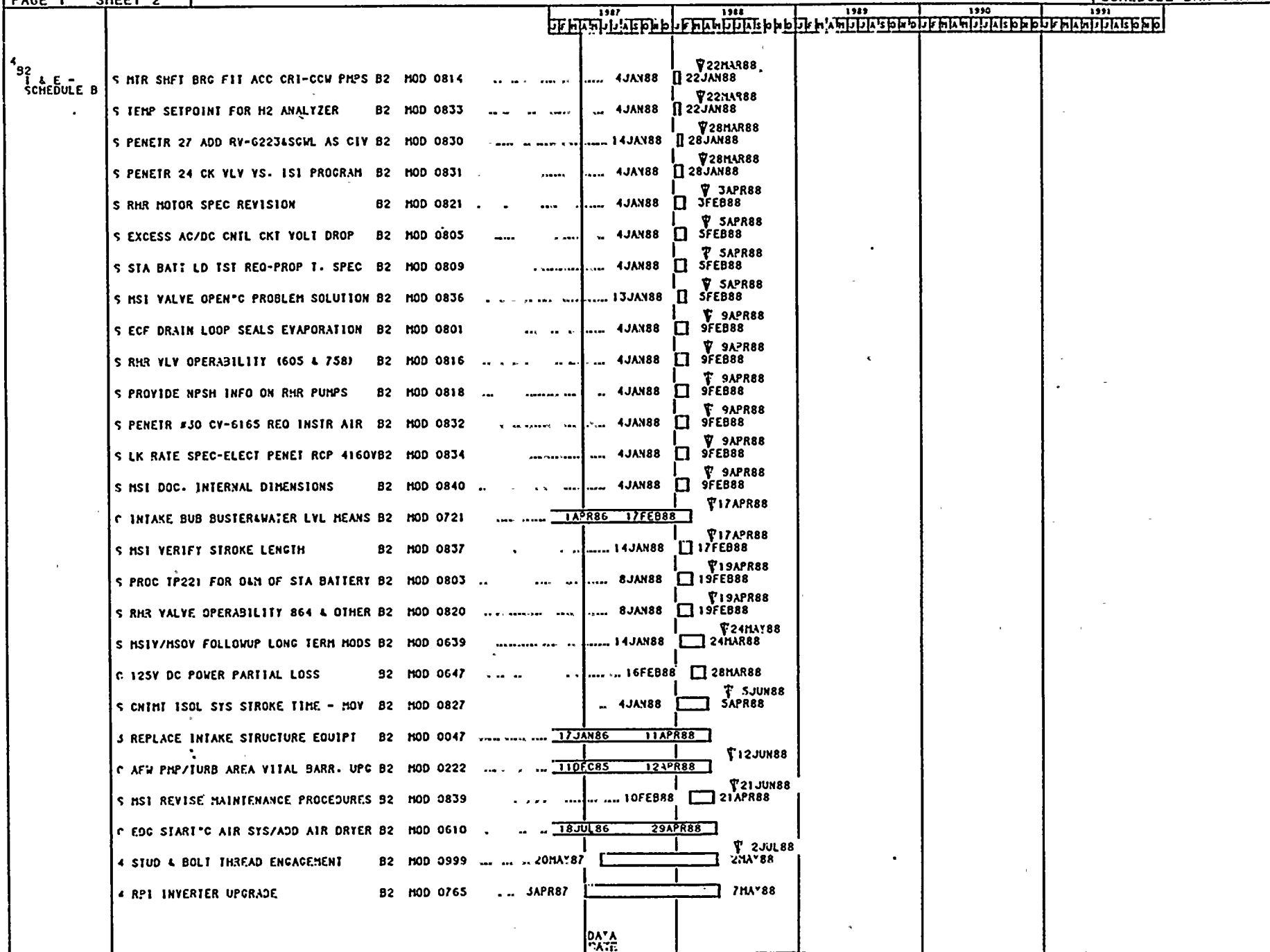
PROJECT 3ALMEGA PLOT A2RECS PAGE 1 SHEET 1	TURKEY POINT NUCLEAR PLANT INTEGRATED SCHEDULE FLORIDA POWER AND LIGHT CO.	MODE T/BI INTERVAL: 1 MONTH(S)	RUN 12APR87 13.20 PROJECT/2 85A4 SCHEDULE BAR CHART
START 1FEB84 FINISH 31DEC99 DATA DATE 2APR87	T A R G E T S C H E D U L E LINE BREAK ON NRC CATEGORY TYPES SORT BREAKS CUR EF BCODES 3456	TARGET SCHEDULE 3 TARG FINISH 31DEC99 TARG DATA DATE 29JAN87	

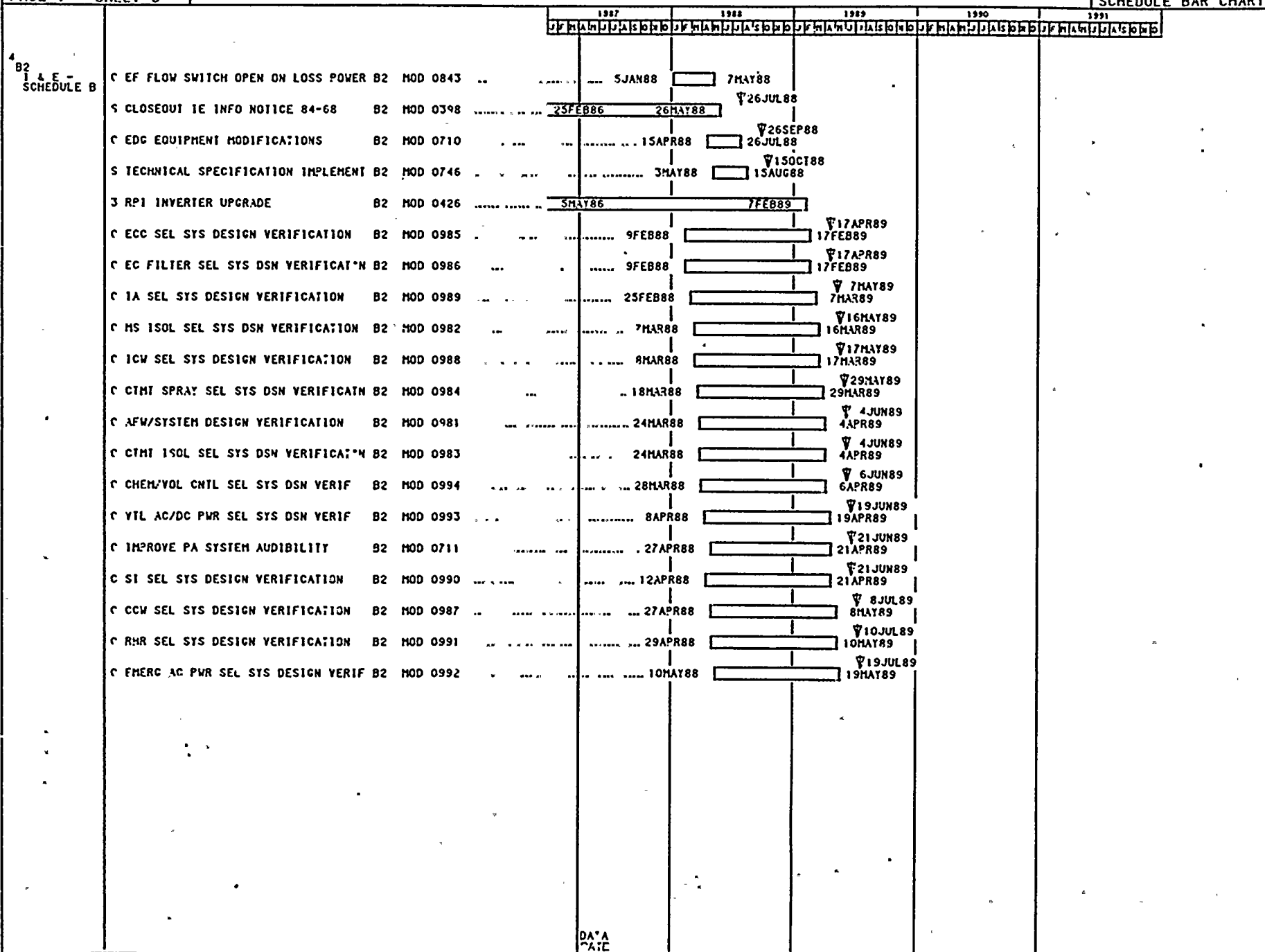




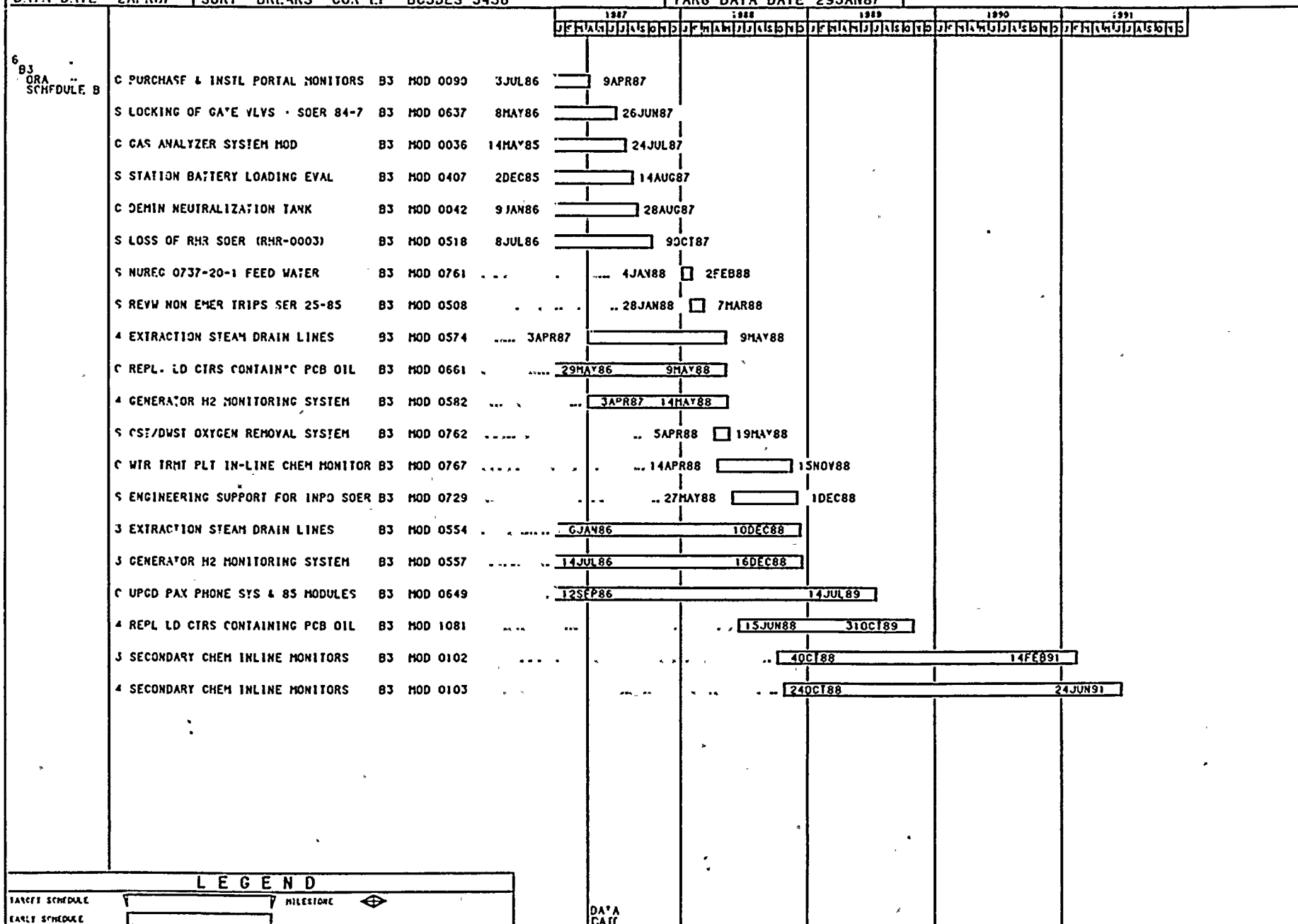
PROJECT 3ALMEGA PLOT B21ANDE PAGE 1 SHEET 1	TURKEY POINT NUCLEAR PLANT INTEGRATED SCHEDULE FLORIDA POWER AND LIGHT CO.	MODE T/BI INTERVAL: 1 MONTH(S)	RUN 14APR87 11.51 PROJECT/2 85A4 SCHEDULE BAR CHART
START 1FEB84 FINISH 31DEC99 DATA DATE 2APR87	T A R G E T S C H E D U L E LINE BREAK ON NRC CATEGORY TYPES SORT BREAKS CUR EF BCODES 3456	TARGET SCHEDULE 3 TARG FINISH 31DEC99 TARG DATA DATE 29JAN87	

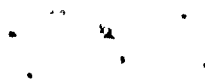




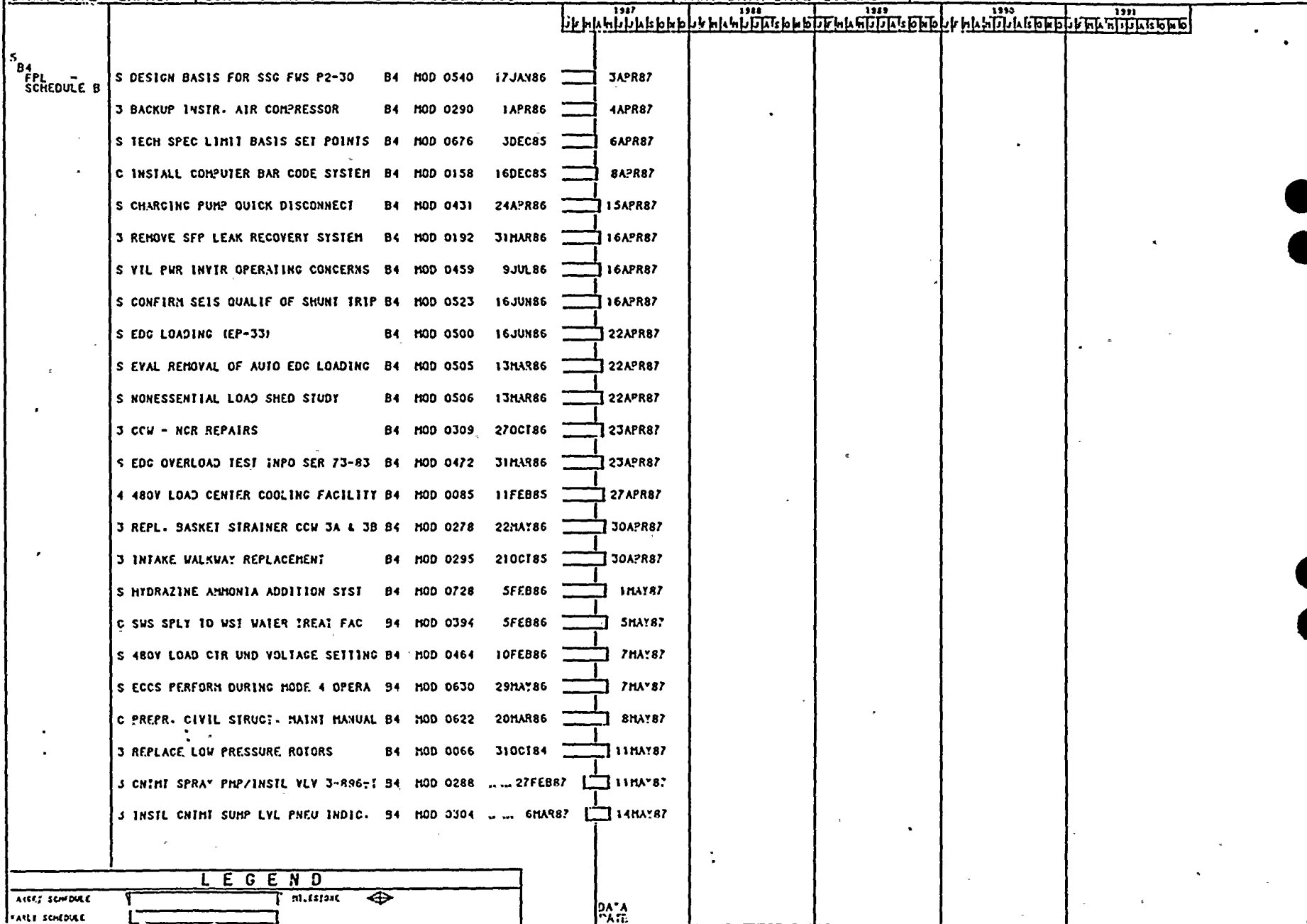


PROJECT JALMEGA PLOT B30RA PAGE 1 SHEET 1	TURKEY POINT NUCLEAR PLANT INTEGRATED SCHEDULE FLORIDA POWER AND LIGHT CO.	MODE T/BT INTERVAL: 1 MONTH(S)	RUN 12APR87 13:14 PROJECT 2 85A4 SCHEDULE BAR CHART
START 1FEB84 FINISH 31DEC99 DATA DATE 2APR87	T A R G E T S C H E D U L E LINE BREAK ON NRC CATEGORY TYPES SORT BREAKS CUR EF BCODES 345G	TARGET SCHEDULE 3 TARG FINISH 31DEC99 TARG DATA DATE 29JAN87	

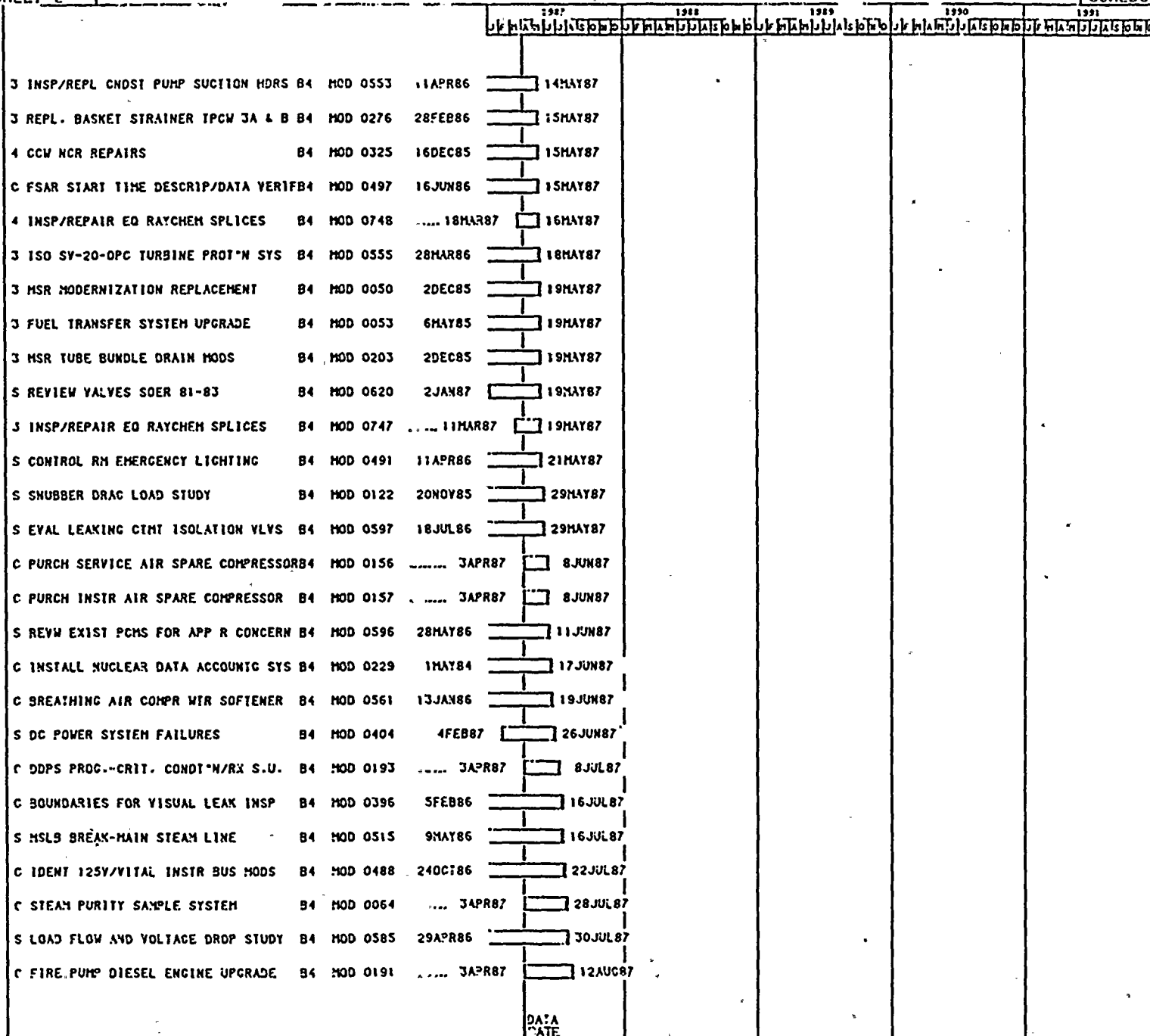




PROJECT 3ALMEGA	TURKEY POINT NUCLEAR PLANT	MODE T/BT	RUN 14APR87 11:53
PLOT B4FPL	INTEGRATED SCHEDULE	INTERVAL: 1 MONTH(S)	PROJECT/2 85A4
PAGE 1 SHEET 1	FLORIDA POWER AND LIGHT CO.	TARGET SCHEDULE 3	SCHEDULE BAR CHART
START 1FEB84	LINE BREAK ON NRC CATEGORY TYPES	TARG FINISH 31DEC99	
FINISH 31DEC99	LINE BREAK ON NRC CATEGORY TYPES	TARG DATA DATE 29JAN87	
DATA DATE 2APR87	LINE BREAK ON NRC CATEGORY TYPES		

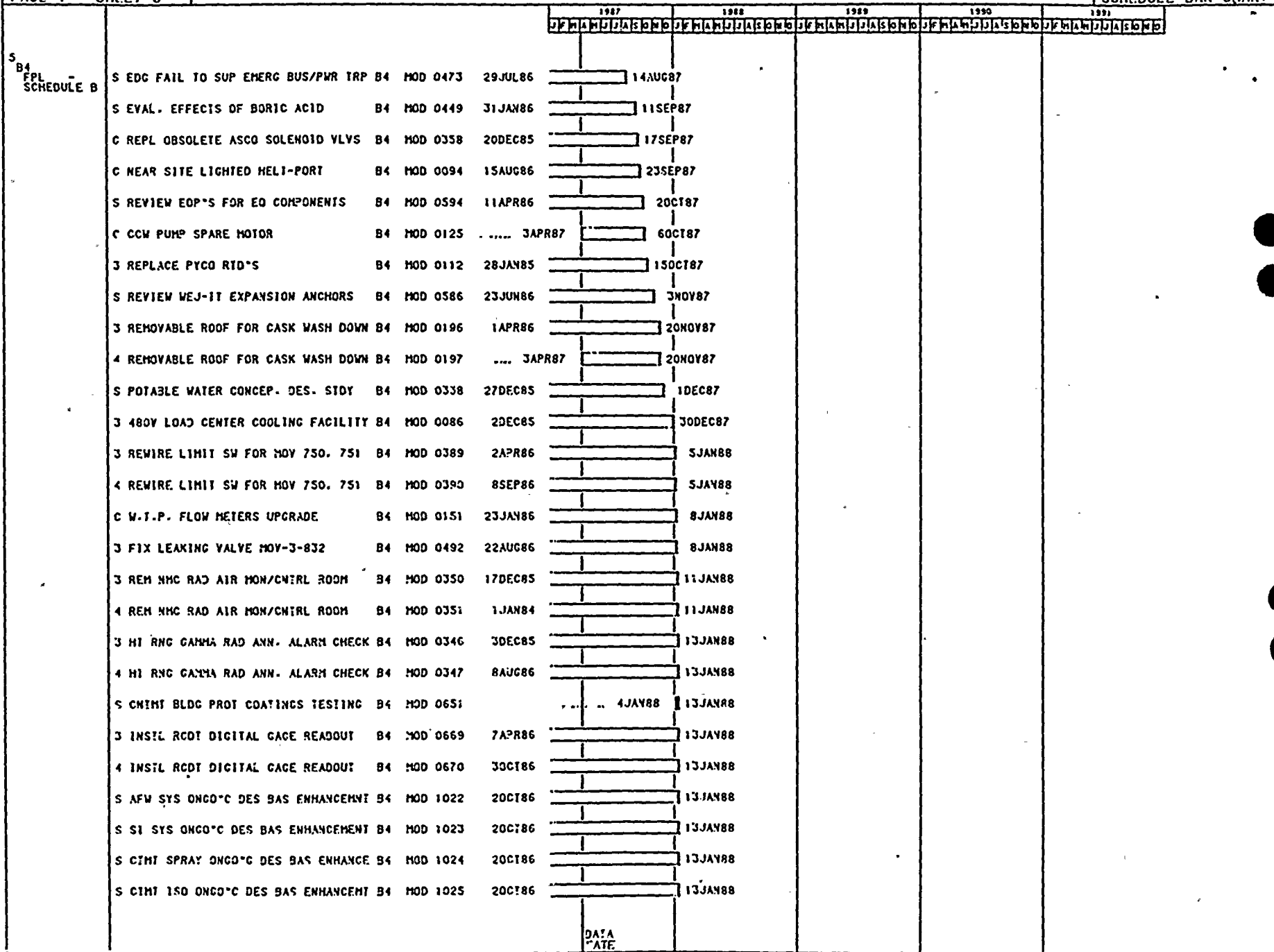


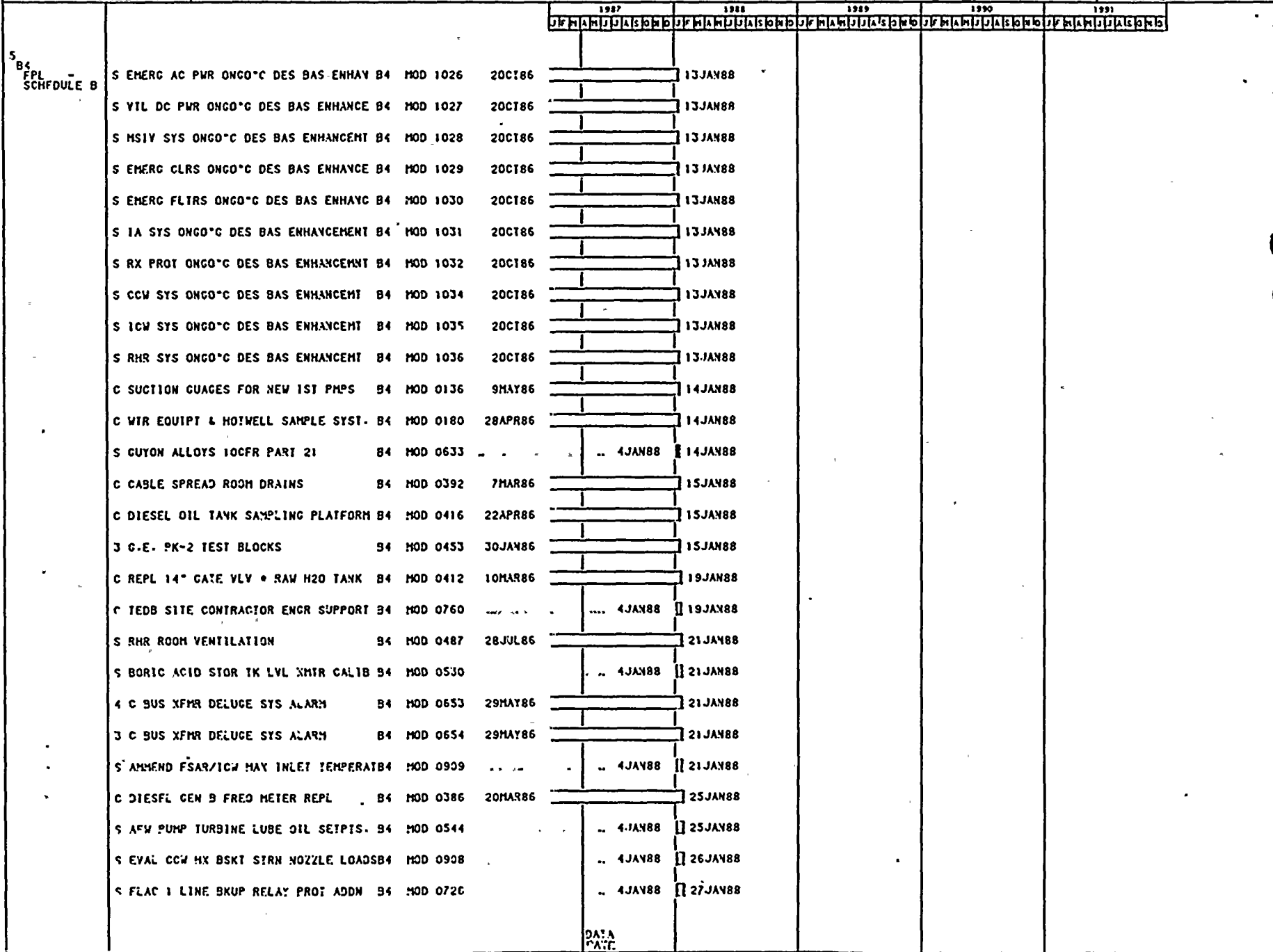
S
B4
FPL
SCHEDULE B

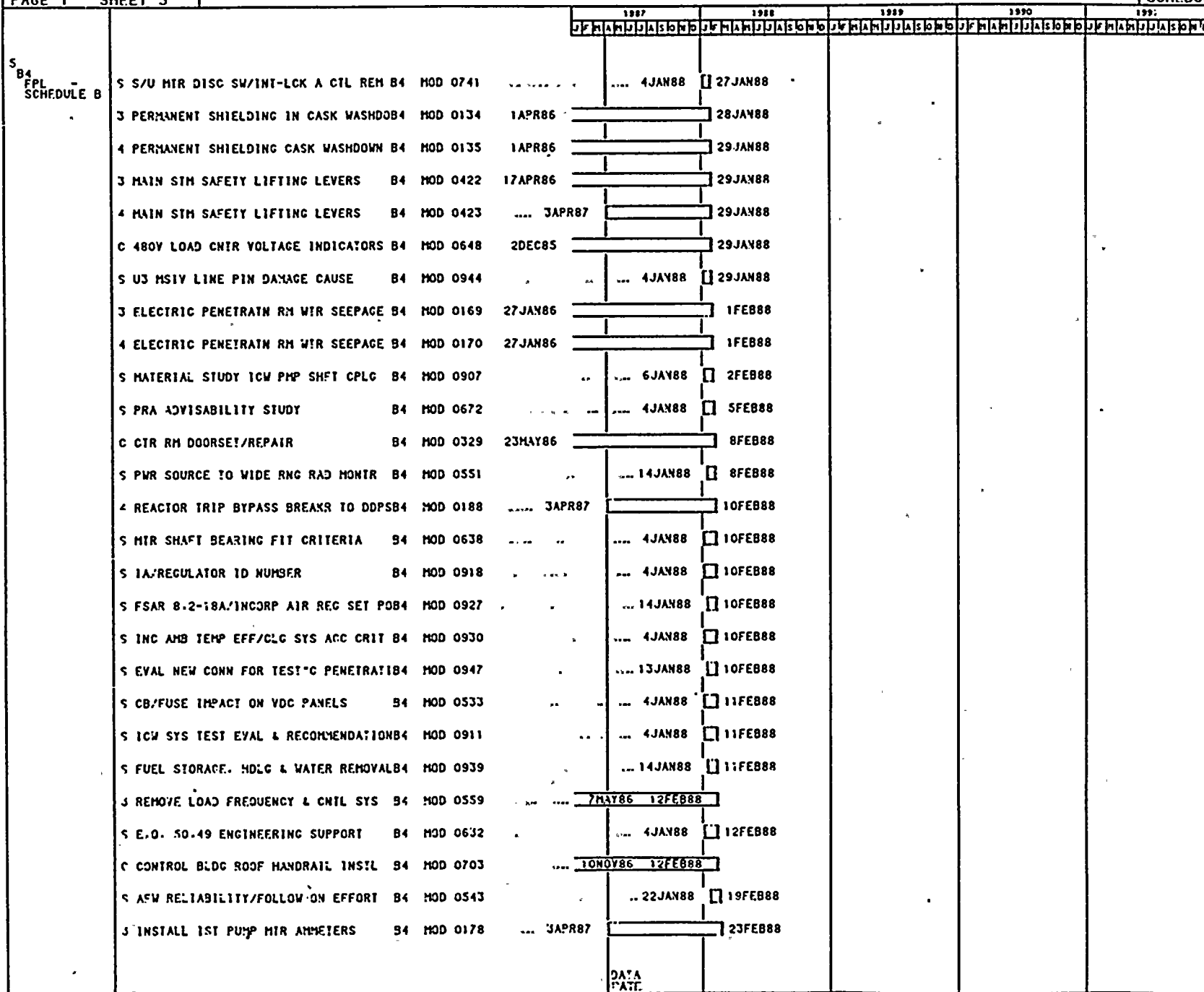


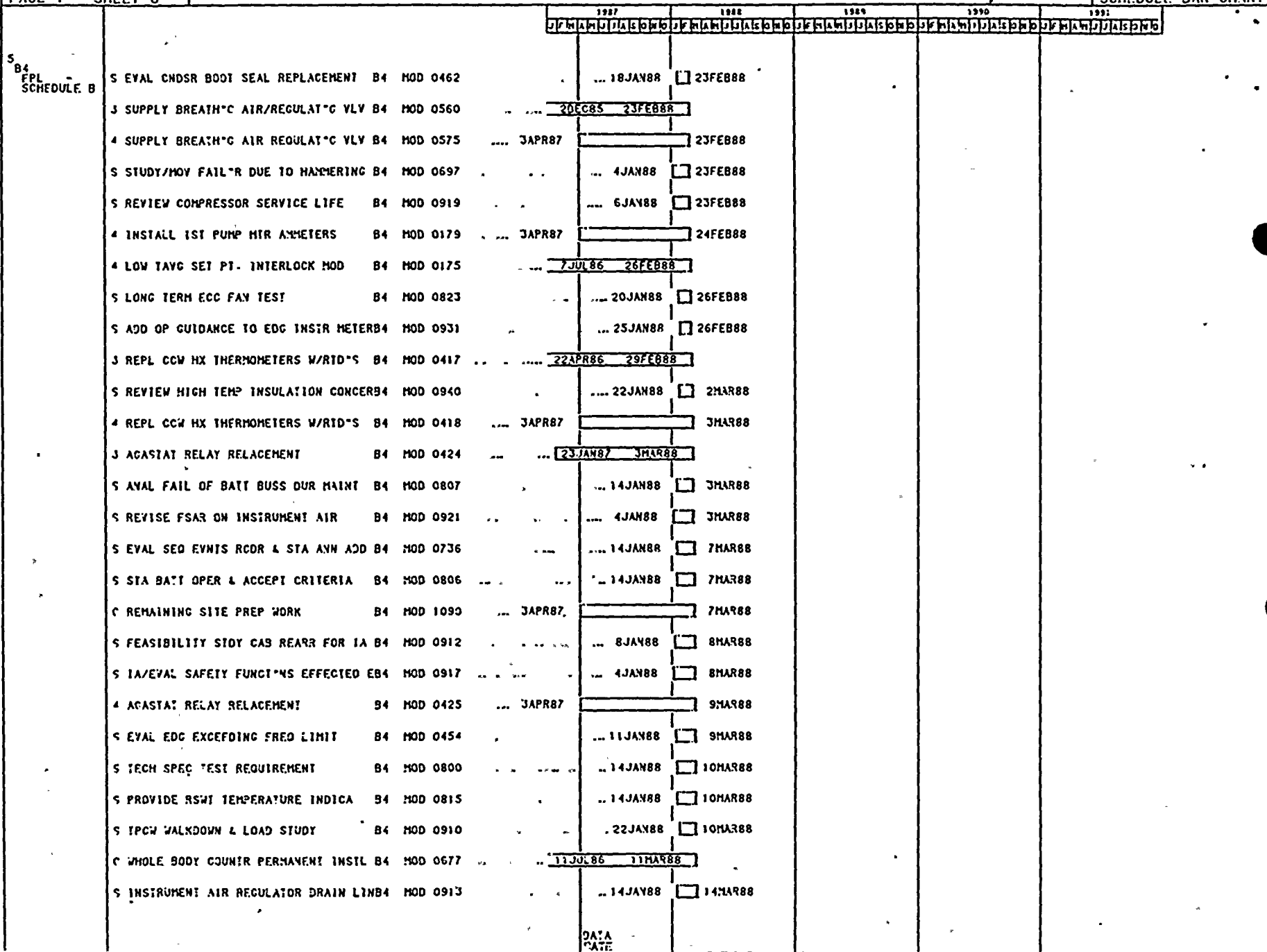
DATA
DATE





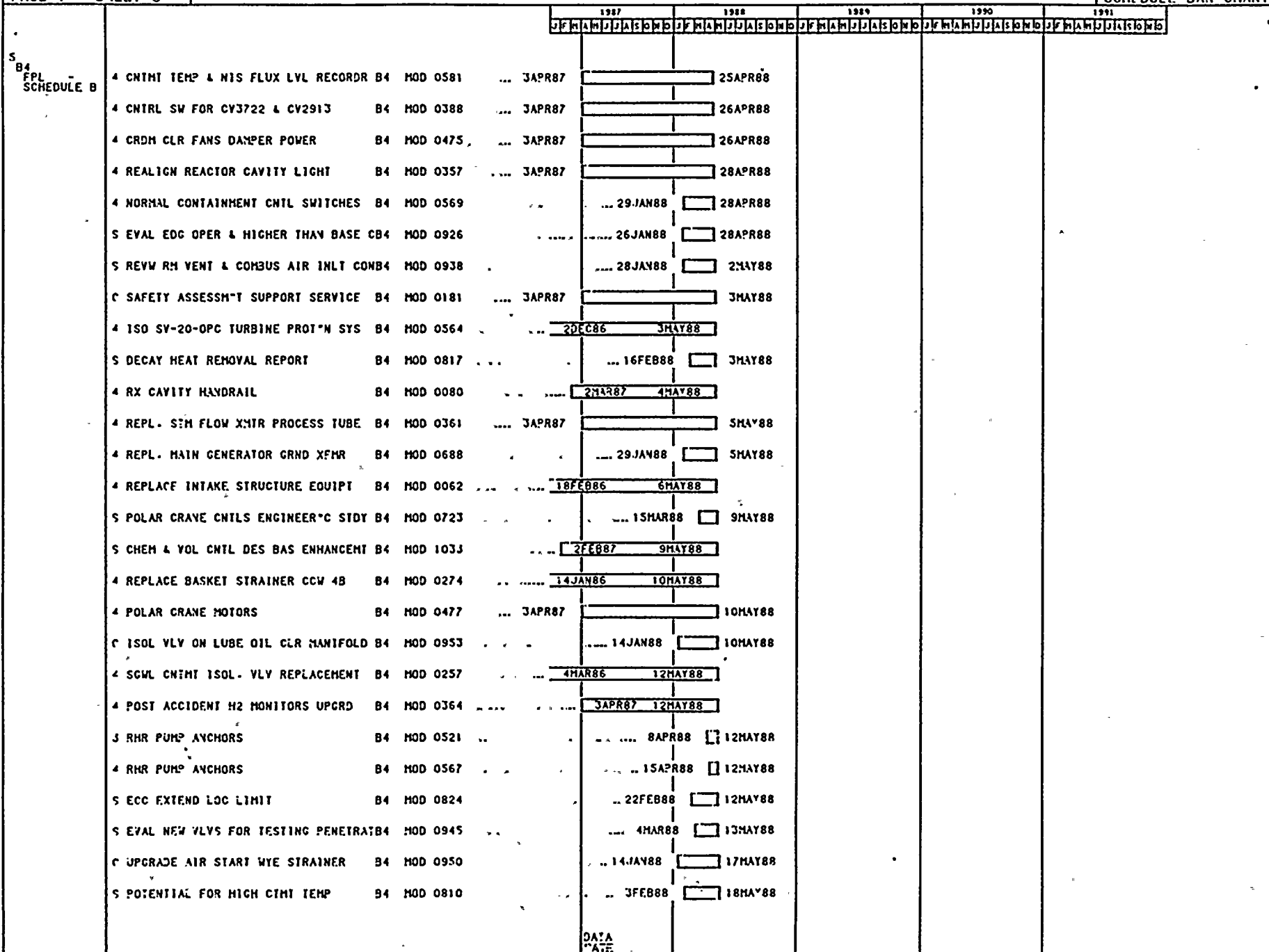


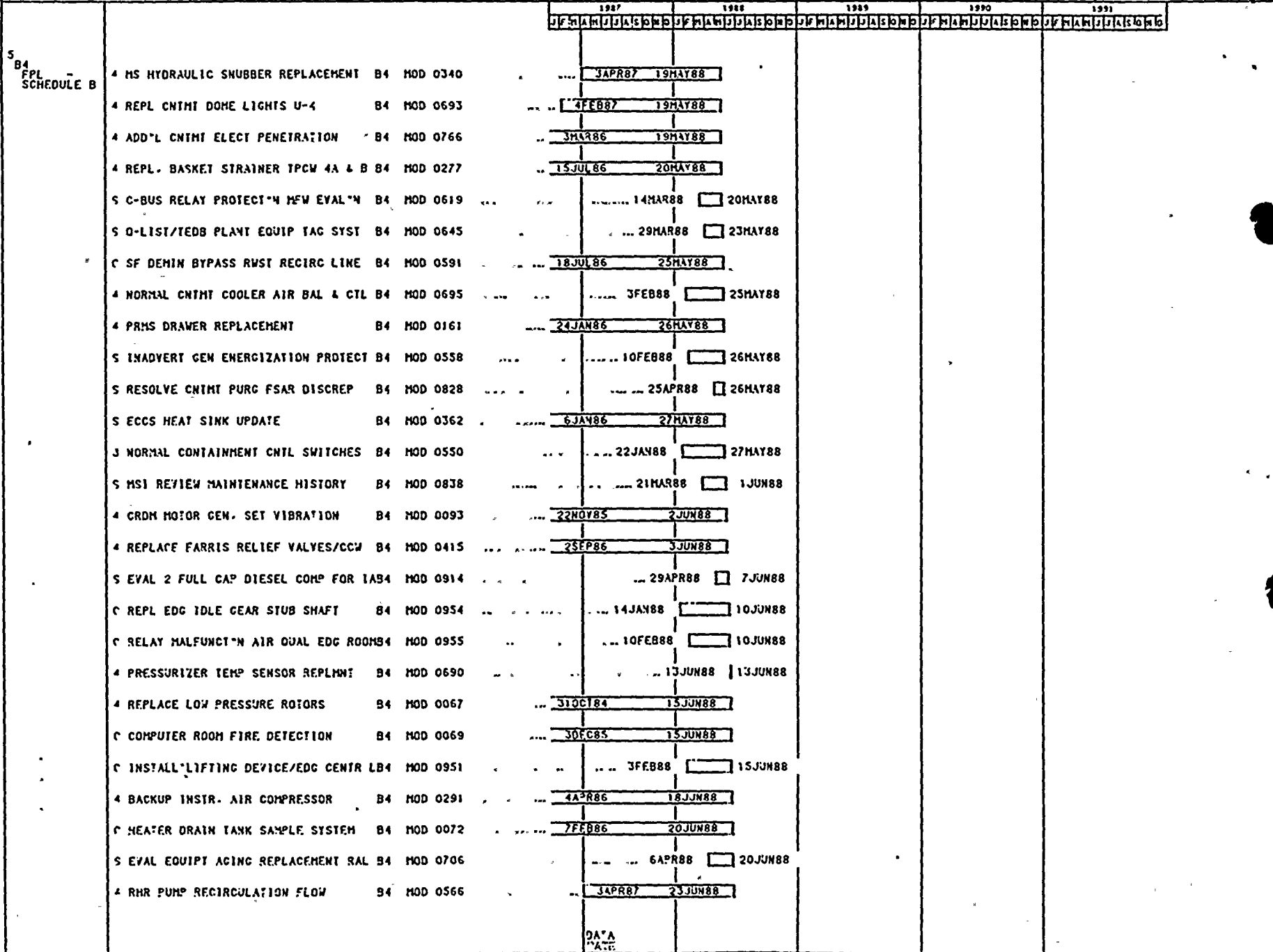


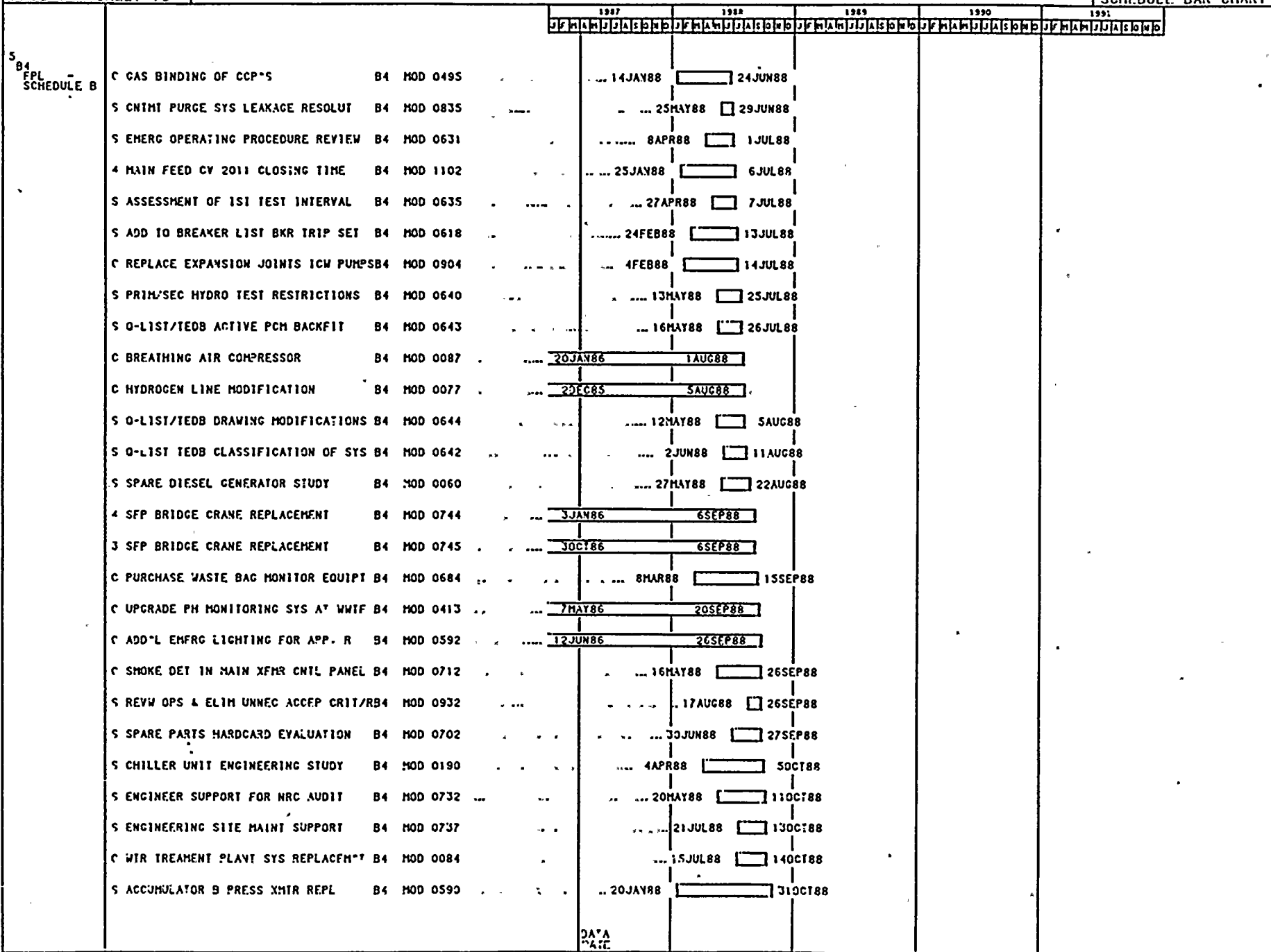


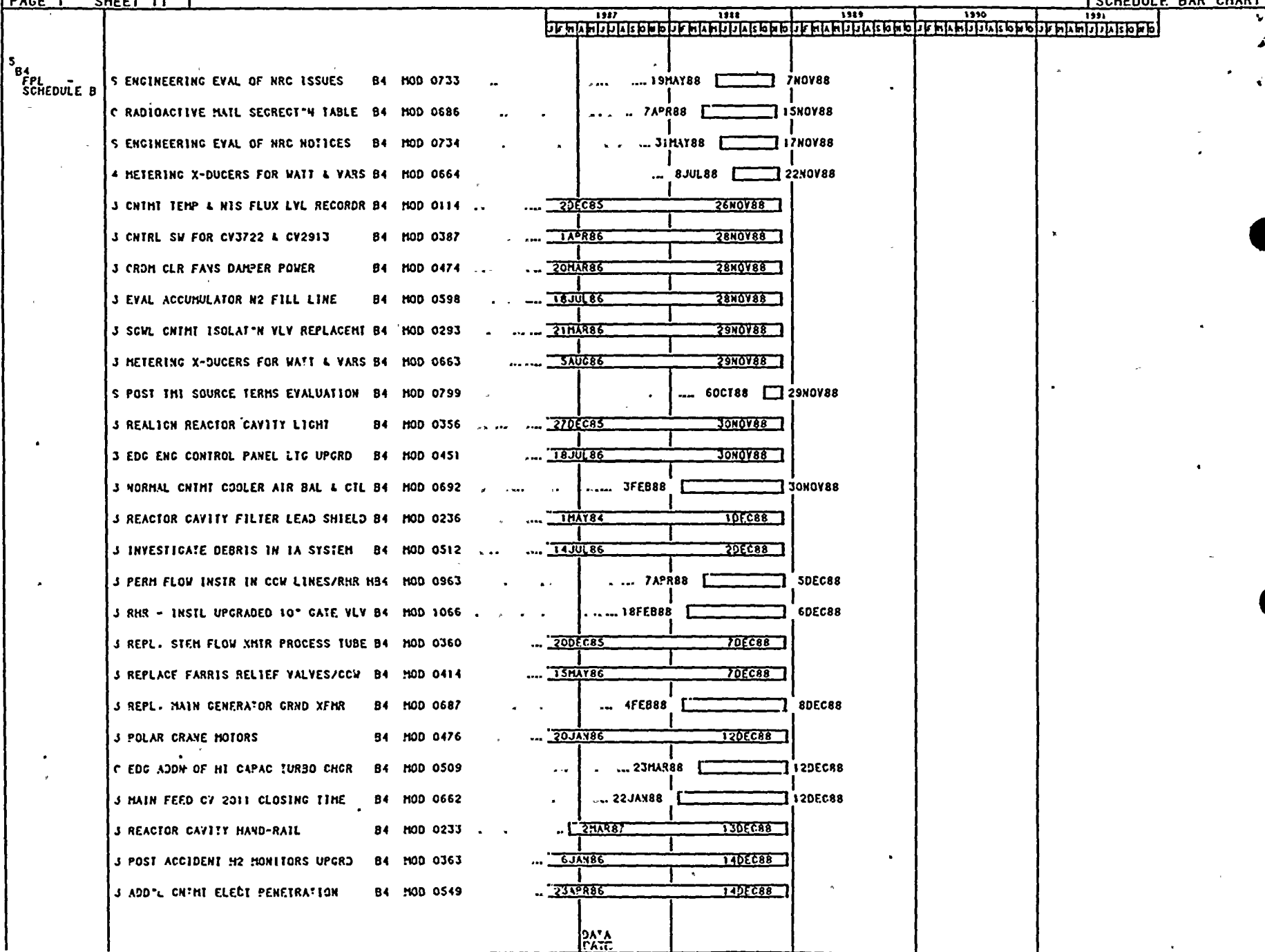
DATA
DATE

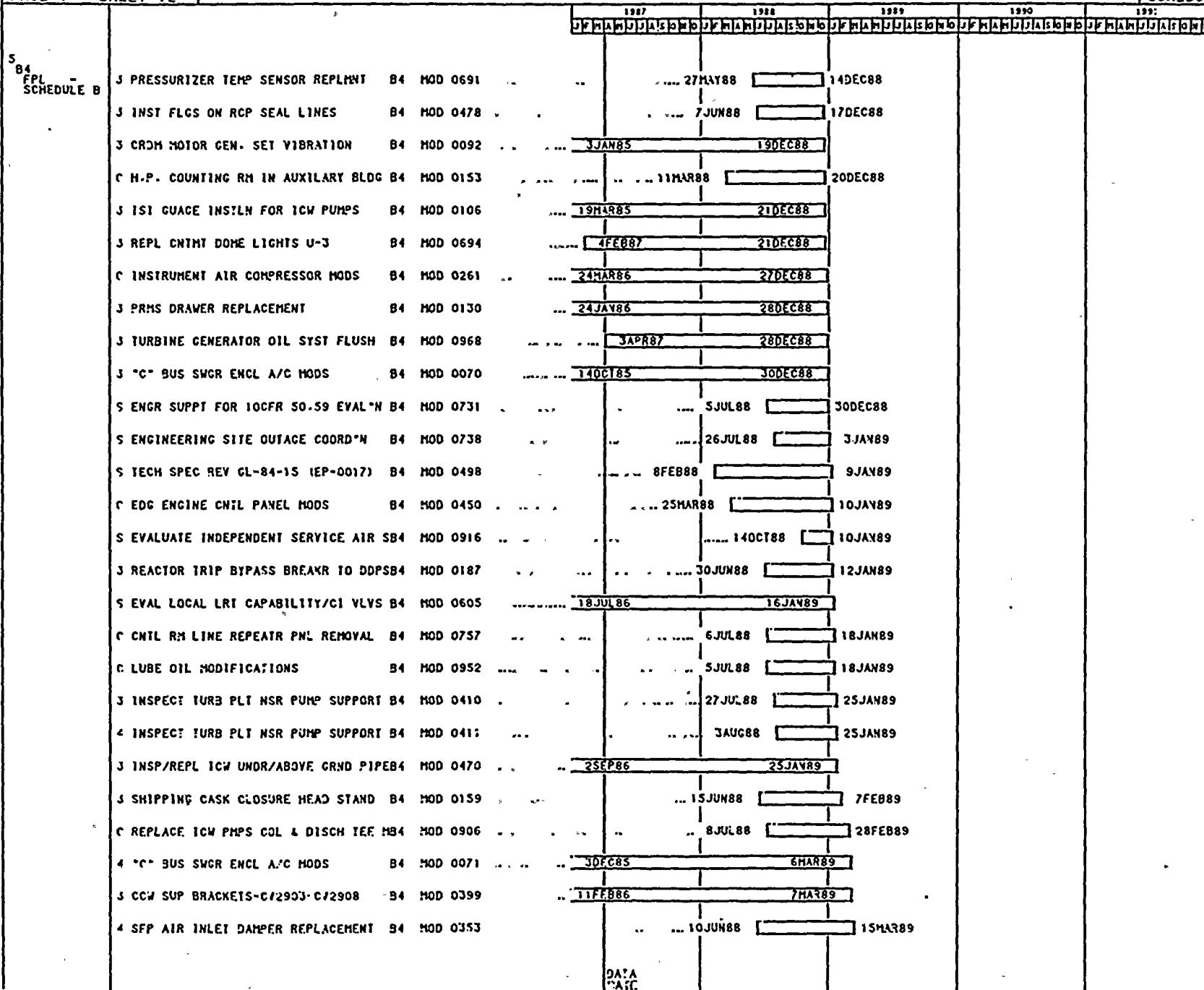
				1987	1988	1989	1990	1991
				JFMAJJJASON	JFMAJJJASON	JFMAJJJASON	JFMAJJJASON	JFMAJJJASON
S ^{B4} FPL SCHEDULE B	S REVISE IA SYSTEMS DESCRIPTIONS	B4 MOD 0920	4JAY88	<input type="checkbox"/> 14MAR88			
	S REVIEW COMPRESSOR LOADING FOR IA	B4 MOD 0922	14JAN88	<input type="checkbox"/> 14MAR88			
	S EVAL PROB RISK ASSESSMENT STUDY EDB4	MOD 0937	27JAN88	<input type="checkbox"/> 15MAR88			
	S EMERG C/HI COOLERS OPERAB EVAL	B4 MOD 0813	14JAN88	<input type="checkbox"/> 17MAR88			
	S PROVIDE ACCEPT CRIT FOR OIL XFR PMB4	MOD 0928	14JAY88	<input type="checkbox"/> 17MAR88			
	4 CCW SUP BRACKETS-CV2903-CV2908	B4 MOD 0400	... JAPR87		<input type="checkbox"/> 18MAR88			
	C HAZARDOUS WASTE STORAGE PADS	B4 MOD 0421	..	29DEC86	<input type="checkbox"/> 18MAR88			
	S SYNC CK RECLOS&SUPV BRX CNTL ADD B4	MOD 0742	..	29JAN88	<input type="checkbox"/> 21MAR88			
	S DEVELOP AIR LEAK INSPECTION PROGRAB4	MOD 0923	8JAN88	<input type="checkbox"/> 22MAR88			
	C ELEC TERM BOX FOR XFMR & VAC PROC B4	MOD 0707	20AUG86	<input type="checkbox"/> 24MAR88			
	S RHR MOV 744 A & B	B4 MOD 0822	..	15JAN88	<input type="checkbox"/> 24MAR88			
	S EVAL 2 FULL CAP DIESEL GEN FOR IA B4	MOD 0915	18FEB88	<input type="checkbox"/> 28MAR88			
	S CONTAINMENT SPRAY PHP SUCT PRESS	B4 MOD 0802	...	20JAN88	<input type="checkbox"/> 30MAR88			
	S CONFIRM 200KW IS SINGLE LARGEST LOB4	MOD 0933	14JAN88	<input type="checkbox"/> 31MAR88			
	S ENGINEER'C EVAL SPARE PARTS SPECS B4	MOD 0739	9FEB88	<input type="checkbox"/> 1APR88			
	S OPERABILITY REQMT'S ECCS EQUIP	B4 MOD 0844	8FEB88	<input type="checkbox"/> 4APR88			
	S ADD PRESSURE GUAGES TO PENETRAT'NSB4	MOD 0946	8FEB88	<input type="checkbox"/> 4APR88			
	C REPLACE ICW PUMP MOTOR COUPLINGS	B4 MOD 0905	4JAN88	<input type="checkbox"/> 7APR88			
	C WALKDOWN INSTRUMENT AIR SYSTEM	B4 MOD 0924	..	10MAR88	<input type="checkbox"/> 7APR88			
	C REL INV XFR LN TO C/I W/O S PDS PNLB4	MOD 0925	4JAN88	<input type="checkbox"/> 7APR88			
	C SEALING SHFT FRM CABLE SPREAD RM	B4 MOD 0279	..	17DEC85	<input type="checkbox"/> 8APR88			
	S REM BAT ROOM CHILLERS FOR EDG LOADB4	MOD 0929	..	16FEB88	<input type="checkbox"/> 11APR88			
	S RESPONSE TO BROKEN PUMP SHAFT	B4 MOD 0493	4FEB88	<input type="checkbox"/> 14APR88			
	S ISI CODE BOUNDARY DVC UPDATE	B4 MOD 0756	19FEB88	<input type="checkbox"/> 18APR88			
	S MSIV IE REPORT RVW FWO O/M ?206	B4 MOD 0841	..	11FEB88	<input type="checkbox"/> 22APR88			
	4 EDG ENG CONTROL PANEL LTC UPGRD	B4 MOD 0452	... JAPR87		<input type="checkbox"/> 23APR88			
	C D.C. SWGR CRITERIA PER TS 3.7-8	B4 MOD 0528	1FEB88	<input type="checkbox"/> 25APR88			



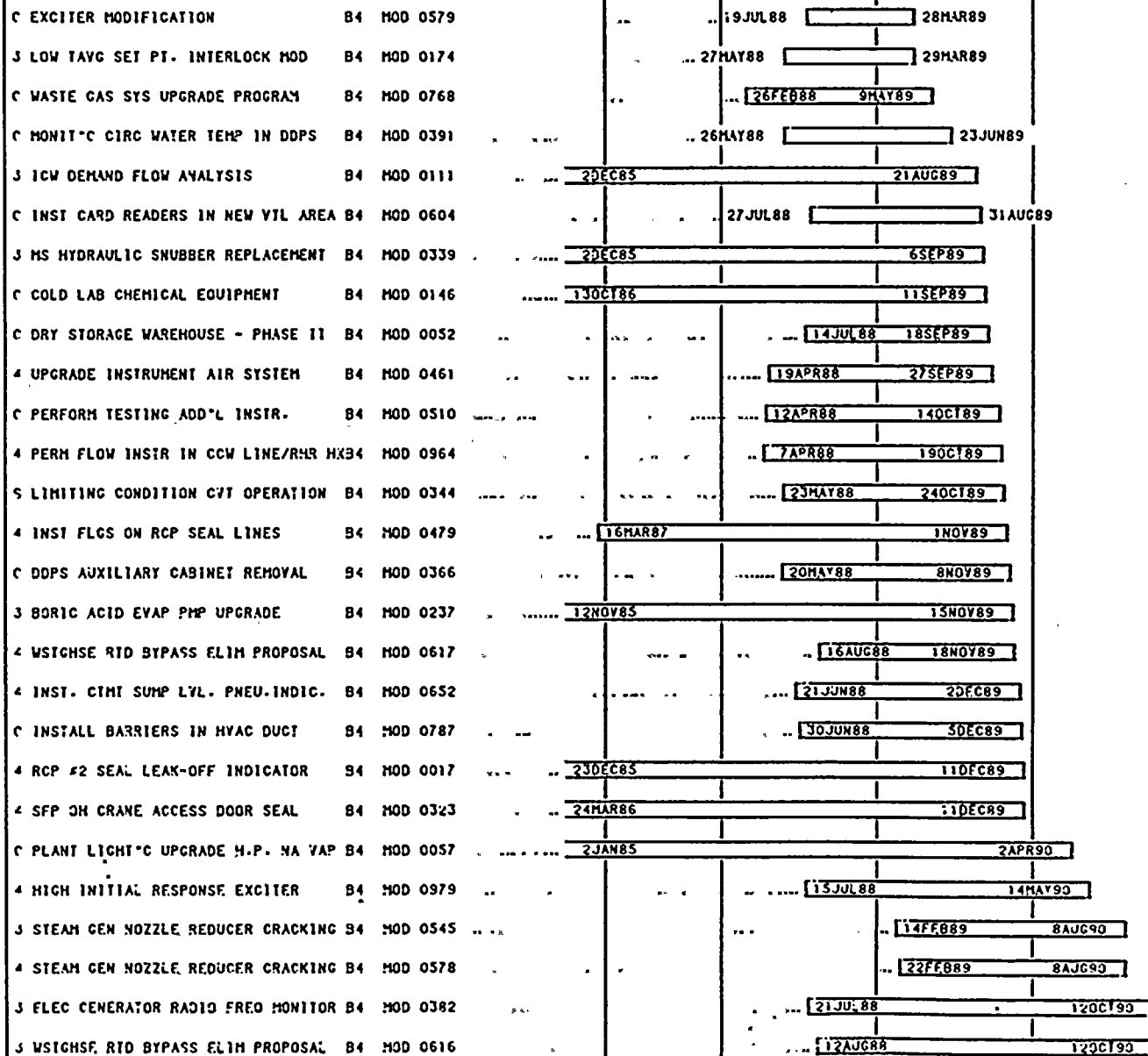




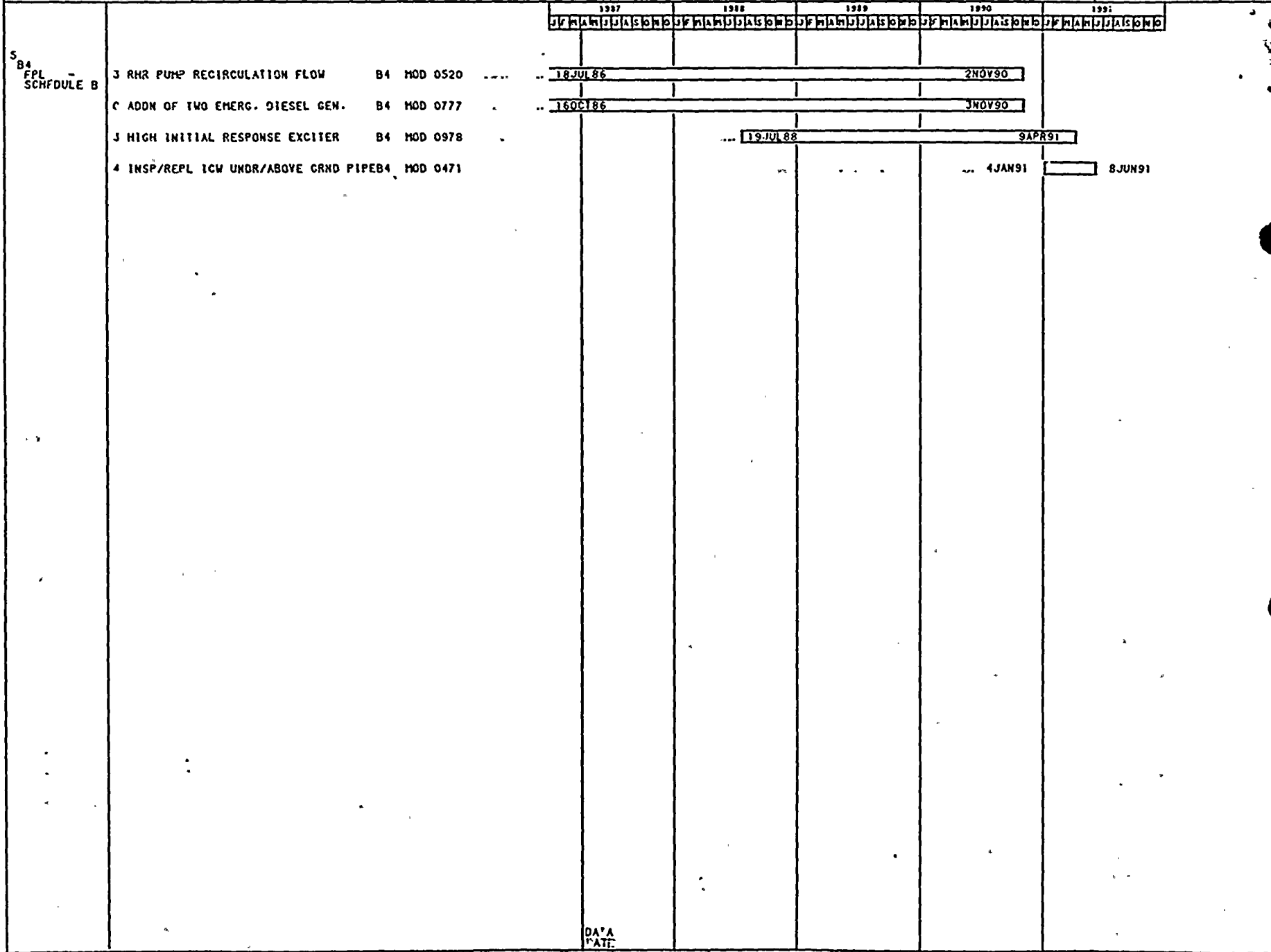




S
B4
FPL
SCHEDULE B



DATA
DATE



DATA
 DATE

APPENDIX A

SCHEDULE "A" MODIFICATIONS NOT COMPLETE BY USNRC COMMITMENT DATES

MOD 25: 3 ALT SHUTDN CAPABILITY APPENDIX R

USNRC: 19 MAY 87

All work/implementation activities are on schedule to finish by the end of the current Unit 3 Cycle 11 refueling outage, satisfying the USNRC commitment. Activities which exceed the May 19, 1987, commitment date are cleanup, decon, and cost reporting activities that will be completed by June 3, 1987.

MOD 116: 3 SFP CLG SYST SEISMIC ANAL

USNRC: 19 MAY 87

Physical modification work for this project will be completed by the end of the Unit 3 Cycle 11 refueling outage, with startup and turnover complete by April 22, 1987; However, the final stress analysis and calculations and the final qualification report will not be complete until July 10, 1987.

MOD 272: C NEW NUCLEAR MAINT. BUILDING

USNRC: 3 OCT 87

The current schedule for completion of the new nuclear maintenance building, except for demobilization, is November 6, 1987. Demobilization finishes December 8, 1987. Schedule delay results from addition of a third floor to the building and time necessary to obtain permits.

