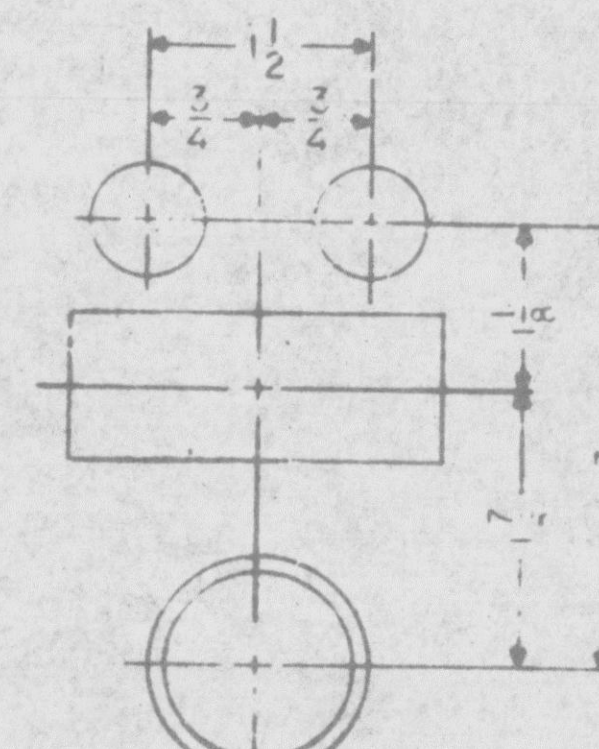
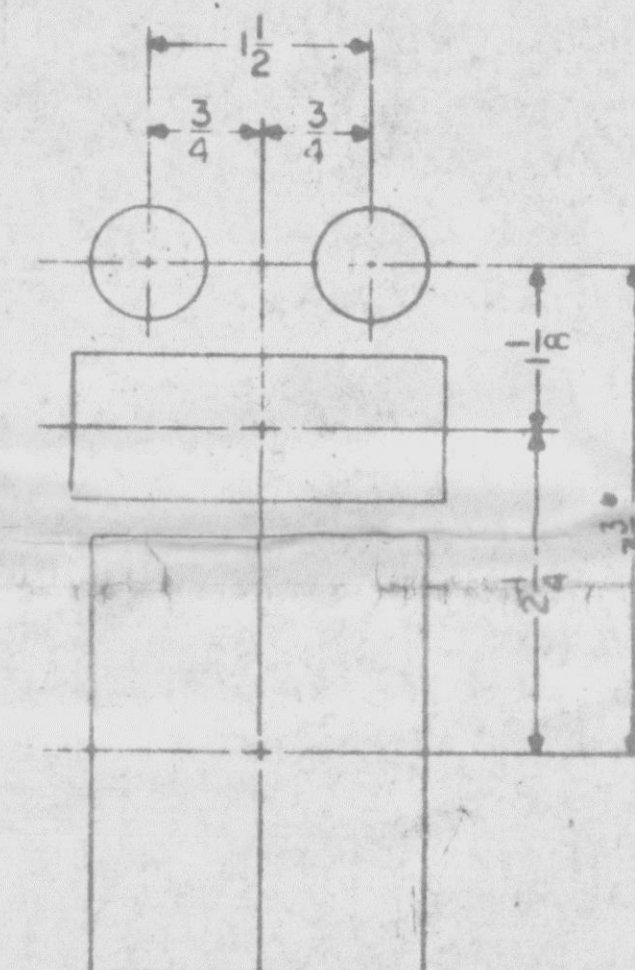


6-6-80	(Revised 7-3-80)
SUB JIB	PL/M
096	78-1013
127	80-51
074	78-75
209	78-1013



TYPICAL FOR ALL OT2 SWITCHES WITH 2 LIGHTS AND NAMEPLATE
SCALE: FULL



TYPICAL FOR ALL W2 SWITCHES WITH 2 LIGHTS AND NAMEPLATE
SCALE: FULL

CONTINUED ON DWG E-1713

POOR ORIGINAL

PRC
APERTURE
CARD

(PLR-)

8303160364

E

CHG'S. TO HIS FUNCTIONS PER REA-TPN-140	MARK NO.	EXISTING	FUTURE	NEW SWITCHES
81	516	SV-3-2913	SV-3-2913	
50	SV-3-2913:855	SV-3-2912:2311	CV-3-2821	855
79	SV-3-2912:2311	CV-3-2821		
78	CV-3-2821:2822	CV-3-2822		
77	CV-3-2819:2826	CV-3-2819		
76	CV-3-2803	CV-3-2826		
82	4659A	CV-3-2803	4659A	
83	4659B	516	4659B	

HIS-3-6275ABCC
STM GEN BLDN ISOLATION VLV'S

RELOCATED SWITCHES
HIS-3-855
HIS-3-4659A
HIS-3-4659B

FRONT VIEW-SECTION 3C06

SCALE: 2 1/2"=1'-0"

STM GEN LIQD SAMPLE PASS VLV
HIS-3-1425X, IL-3-1425X, IL-3-1425X-1
HIS-3-1426X, IL-3-1426X, IL-3-1426X-1
HIS-3-1427X, IL-3-1427X, IL-3-1427X-1

DES. NO.	TITLE
E-1713	FRONT VIEW-SECTION 3C06
E-1714	FRONT VIEW-SECTION 3C06
E-1715	TOP VIEW, SECTIONS A-A, B-B
E-1716	SIDE VIEW, SECTIONS C-C, D-D, E-E
BM-1715-4	BILL OF MATERIAL
AE-1779	LIST OF NAMEPLATES (BEHIND PANELS, M-384)
C-5626	PLAN ELEVATION OF PANELS & CONSOLE LAYOUT
AE-1770	LIST OF NAMEPLATES (DIAGRAM LIGHTS)

NO.	REV.	DESCRIPTION	BY	DATE
1	1	RECEIVED AS SHOWN	PLR	7/3/80
2	2	AS SHOWN	PLR	7/3/80
3	3	RECEIVED AS SHOWN	PLR	7/3/80
4	4	RECEIVED AS SHOWN	PLR	7/3/80
5	5	RECEIVED AS SHOWN	PLR	7/3/80
6	6	RECEIVED AS SHOWN	PLR	7/3/80
7	7	RECEIVED AS SHOWN	PLR	7/3/80
8	8	RECEIVED AS SHOWN	PLR	7/3/80
9	9	RECEIVED AS SHOWN	PLR	7/3/80
10	10	RECEIVED AS SHOWN	PLR	7/3/80
11	11	RECEIVED AS SHOWN	PLR	7/3/80
12	12	RECEIVED AS SHOWN	PLR	7/3/80
13	13	RECEIVED AS SHOWN	PLR	7/3/80
14	14	RECEIVED AS SHOWN	PLR	7/3/80
15	15	RECEIVED AS SHOWN	PLR	7/3/80
16	16	RECEIVED AS SHOWN	PLR	7/3/80
17	17	RECEIVED AS SHOWN	PLR	7/3/80
18	18	RECEIVED AS SHOWN	PLR	7/3/80
19	19	RECEIVED AS SHOWN	PLR	7/3/80
20	20	RECEIVED AS SHOWN	PLR	7/3/80
21	21	RECEIVED AS SHOWN	PLR	7/3/80
22	22	RECEIVED AS SHOWN	PLR	7/3/80
23	23	RECEIVED AS SHOWN	PLR	7/3/80
24	24	RECEIVED AS SHOWN	PLR	7/3/80
25	25	RECEIVED AS SHOWN	PLR	7/3/80
26	26	RECEIVED AS SHOWN	PLR	7/3/80
27	27	RECEIVED AS SHOWN	PLR	7/3/80
28	28	RECEIVED AS SHOWN	PLR	7/3/80
29	29	RECEIVED AS SHOWN	PLR	7/3/80
30	30	RECEIVED AS SHOWN	PLR	7/3/80
31	31	RECEIVED AS SHOWN	PLR	7/3/80
32	32	RECEIVED AS SHOWN	PLR	7/3/80
33	33	RECEIVED AS SHOWN	PLR	7/3/80
34	34	RECEIVED AS SHOWN	PLR	7/3/80
35	35	RECEIVED AS SHOWN	PLR	7/3/80
36	36	RECEIVED AS SHOWN	PLR	7/3/80
37	37	RECEIVED AS SHOWN	PLR	7/3/80
38	38	RECEIVED AS SHOWN	PLR	7/3/80
39	39	RECEIVED AS SHOWN	PLR	7/3/80
40	40	RECEIVED AS SHOWN	PLR	7/3/80
41	41	RECEIVED AS SHOWN	PLR	7/3/80
42	42	RECEIVED AS SHOWN	PLR	7/3/80
43	43	RECEIVED AS SHOWN	PLR	7/3/80
44	44	RECEIVED AS SHOWN	PLR	7/3/80
45	45	RECEIVED AS SHOWN	PLR	7/3/80
46	46	RECEIVED AS SHOWN	PLR	7/3/80
47	47	RECEIVED AS SHOWN	PLR	7/3/80
48	48	RECEIVED AS SHOWN	PLR	7/3/80
49	49	RECEIVED AS SHOWN	PLR	7/3/80
50	50	RECEIVED AS SHOWN	PLR	7/3/80
51	51	RECEIVED AS SHOWN	PLR	7/3/80
52	52	RECEIVED AS SHOWN	PLR	7/3/80
53	53	RECEIVED AS SHOWN	PLR	7/3/80
54	54	RECEIVED AS SHOWN	PLR	7/3/80
55	55	RECEIVED AS SHOWN	PLR	7/3/80
56	56	RECEIVED AS SHOWN	PLR	7/3/80
57	57	RECEIVED AS SHOWN	PLR	7/3/80
58	58	RECEIVED AS SHOWN	PLR	7/3/80
59	59	RECEIVED AS SHOWN	PLR	7/3/80
60	60	RECEIVED AS SHOWN	PLR	7/3/80
61	61	RECEIVED AS SHOWN	PLR	7/3/80
62	62	RECEIVED AS SHOWN	PLR	7/3/80
63	63	RECEIVED AS SHOWN	PLR	7/3/80
64	64	RECEIVED AS SHOWN	PLR	7/3/80
65	65	RECEIVED AS SHOWN	PLR	7/3/80
66	66	RECEIVED AS SHOWN	PLR	7/3/80
67	67	RECEIVED AS SHOWN	PLR	7/3/80
68	68	RECEIVED AS SHOWN	PLR	7/3/80
69	69	RECEIVED AS SHOWN	PLR	7/3/80
70	70	RECEIVED AS SHOWN	PLR	7/3/80
71	71	RECEIVED AS SHOWN	PLR	7/3/80
72	72	RECEIVED AS SHOWN	PLR	7/3/80
73	73	RECEIVED AS SHOWN	PLR	7/3/80
74	74	RECEIVED AS SHOWN	PLR	7/3/80
75	75	RECEIVED AS SHOWN	PLR	7/3/80
76	76	RECEIVED AS SHOWN	PLR	7/3/80
77	77	RECEIVED AS SHOWN	PLR	7/3/80
78	78	RECEIVED AS SHOWN	PLR	7/3/80
79	79	RECEIVED AS SHOWN	PLR	7/3/80
80	80	RECEIVED AS SHOWN	PLR	7/3/80
81	81	RECEIVED AS SHOWN	PLR	7/3/80
82	82	RECEIVED AS SHOWN	PLR	7/3/80
83	83	RECEIVED AS SHOWN	PLR	7/3/80
84	84	RECEIVED AS SHOWN	PLR	7/3/80
85	85	RECEIVED AS SHOWN	PLR	7/3/80
86	86	RECEIVED AS SHOWN	PLR	7/3/80
87	87	RECEIVED AS SHOWN	PLR	7/3/80
88	88	RECEIVED AS SHOWN	PLR	7/3/80
89	89	RECEIVED AS SHOWN	PLR	7/3/80
90	90	RECEIVED AS SHOWN	PLR	7/3/80
91	91	RECEIVED AS SHOWN	PLR	7/3/80
92	92	RECEIVED AS SHOWN	PLR	7/3/80
93	93	RECEIVED AS SHOWN	PLR	7/3/80
94	94	RECEIVED AS SHOWN	PLR	7/3/80
95	95	RECEIVED AS SHOWN	PLR	7/3/80
96	96	RECEIVED AS SHOWN	PLR	7/3/80
97	97	RECEIVED AS SHOWN	PLR	7/3/80
98	98	RECEIVED AS SHOWN	PLR	7/3/80
99	99	RECEIVED AS SHOWN	PLR	7/3/80
100	100	RECEIVED AS SHOWN	PLR	7/3/80

Docket # 80-250
Control # 850340267
Date 02-10-85 of Document
REGULATORY DOCKET FILE

REGULATORY DOCKET FILE COPY