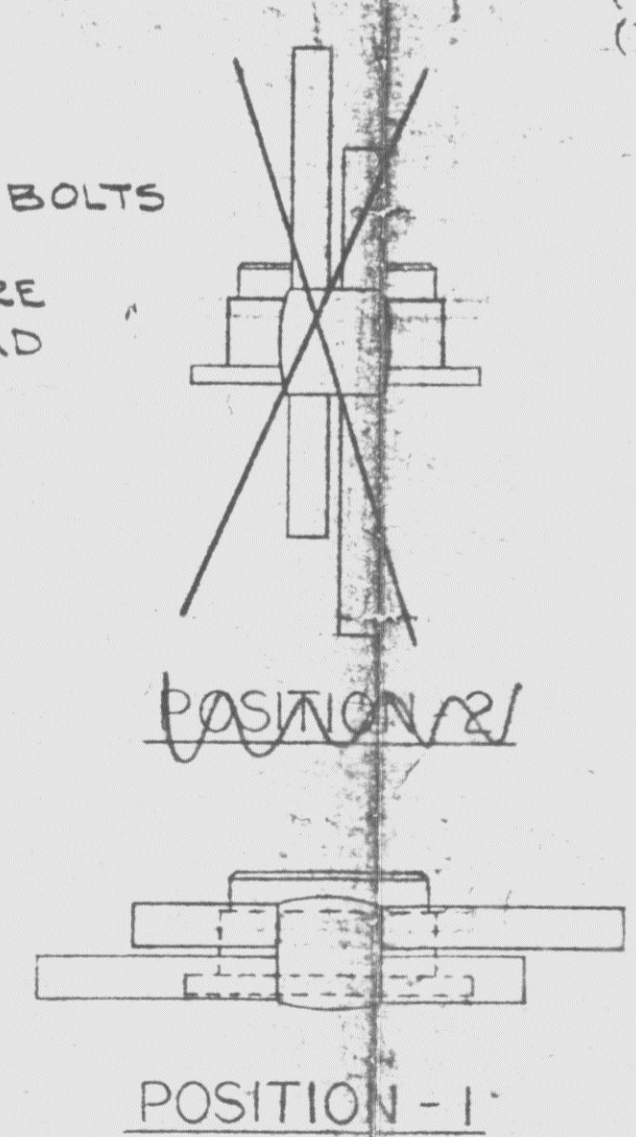


G: NO. & SIZE OF BOLTS
125# STANDARD
TAPPED HOLES ARE
N.C.(3) RH. THREAD
STRADDLE &

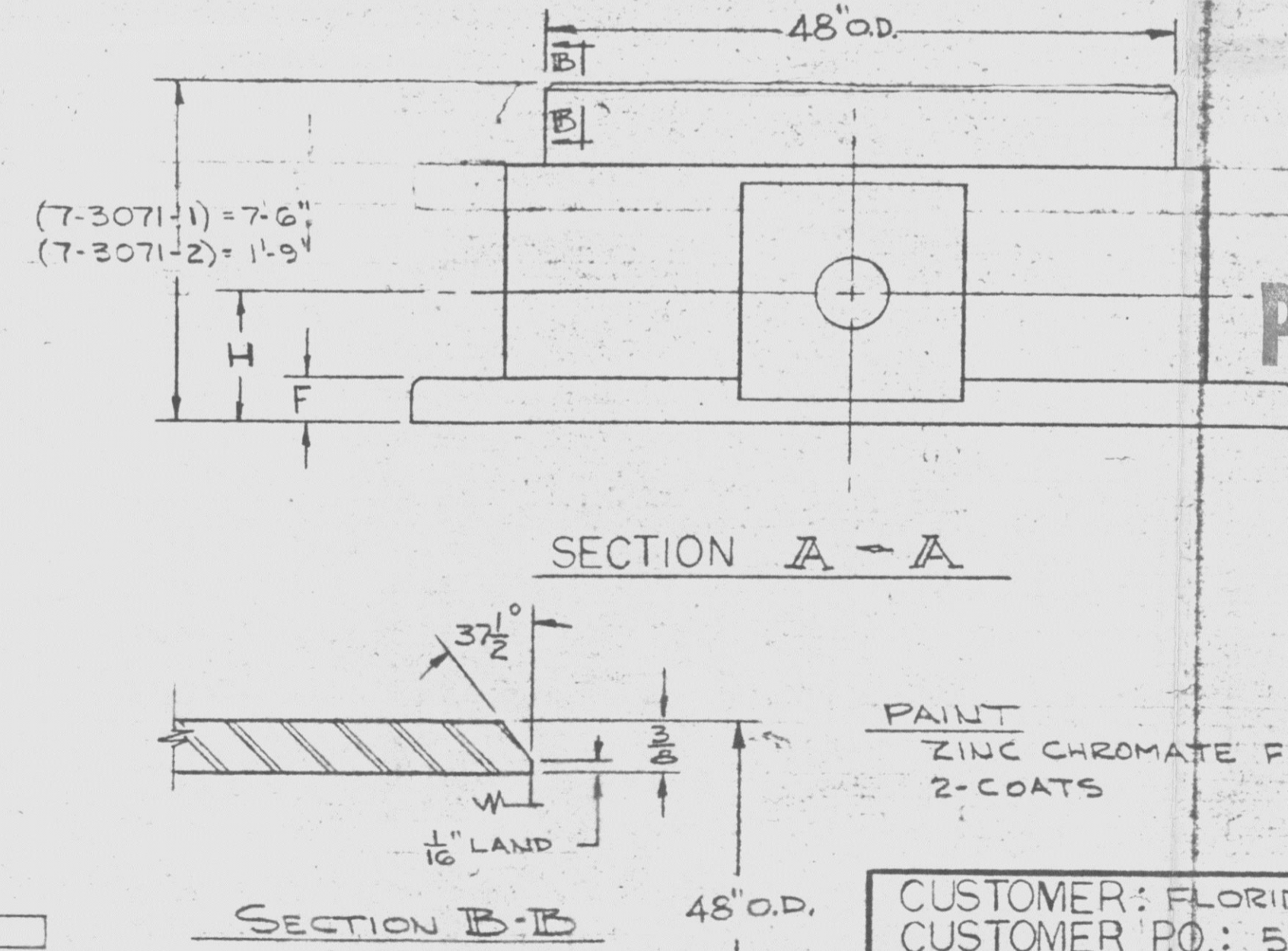


VALVE SIZE	A	B	C	D	E	F		G	H	J
						AST	FAB			
24	29 1/2	32	19	17 5/8	8	1 7/8	1/4	20-1 1/4	4	9
30	36	38 3/4	22 3/4	21 7/8	12	2 1/8	1/4	28-1 1/4	6	8
30	42 3/4	46	26 1/2	25 7/8	12	2 3/8	1/4	32-1 1/2	6	8
42	49 1/2	53	30 7/8	30	12	2 5/8	1/4	36-1 1/2	6	8
48	56	59 1/2	34 1/8	34	15	2 3/4	1 3/8	44-1 1/2	7 1/2	8
54	62 3/4	66 1/4	37 7/8	38 1/8	15	3	1 1/2	44-1 3/4	7 1/2	8
60	69 1/4	73	41 3/4	42 1/8	15	3 1/8	1 5/8	52-1 3/4	7 1/2	8
66	76	80	44 7/8	45 1/4	18	3 3/8	1 3/4	52-1 3/4	9	8
72	82 1/2	86 1/2	48 1/8	48 3/8	18	3 1/2	1 7/8	60-1 3/4	8	8

ALL DIMENSIONS SHOWN IN INCHES
FOR BOLTS SMALLER THAN 1 3/4" DIA BOLT HOLES WILL
BE 1/8" LARGER THAN DIA OF BOLTS FOR BOLTS 1 3/4" DIA
OR LARGER BOLT HOLES WILL BE 1/4" LARGER THAN DIA
OF BOLTS

OPERATOR MODEL NO.	K	L	M	N	P					
2744A-2SR-45	85 1/4	13 1/4	26	42 5/8	13					

SEE DRWG. NO. B-3722 FOR CYLINDER CONTROLS
SEE DRWG. NO. B-3722 FOR LIMIT SWITCHES
CYLINDER (AIR) OPERATED
MIN. OPERATING PRESSURE 80 PSI.
MAX. OPERATING PRESSURE 150 PSI.
MIN. OPERATING SPEED 5 SEC.
MAX. OPERATING SPEED 5 SEC.



PAINT
ZINC CHROMATE FED. SPEC. TT-P-645
2-COATS

CUSTOMER: FLORIDA POWER & LIGHT CO.
CUSTOMER PO.: 5610-M-83
PRATT ORDER NO.: 7-3071-1&2
PROJECT: TURKEY POINT STATION UNITS 3&4
TAG: 7-3071-1 POV-3-2600 & POV-4-2600
7-3071-2 POV-3-2601 & POV-4-2601

NOTES
MACHINING TOLERANCES
UNLESS OTHERWISE SPECIFIED:
FRACTIONAL DIMENSIONS ± 1/64
DECIMAL DIMENSIONS ± .005
ALL ANGLES ± 1°
DIAMETERS ON COMMON CENTERLINE ARE TO BE CONCENTRIC WITHIN .010 T.I.R.
MAX. SURFACE ROUGHNESS 125 R.M.S.
REMOVE ALL BURRS AND BREAK ALL SHARP CORNERS.
CASTING TOLERANCES
UNLESS OTHERWISE SPECIFIED:
MAX. ALLOWABLE TOL. PER DIMENSIONAL RANGE
0 THRU 8 ± 1/16 8 THRU 16 ± 1/8 16 THRU 60 ± 3/16 ABOVE 60 ± 1/4
MAX. ALLOWABLE DRAFT 2°
MAX. ALLOWABLE SHIFT
CASTING TO BE FLAT WITHIN
ALL RADII TO BE
REMOVE ALL FINS AND FLASH.
✓ INDICATES THIS SURFACE TO BE MACHINED.
PATTERN NO. TO BE SAME AS PART NO.
LATEST REVISION NO. TO BE CAST BELOW PATTERN NO.
PRATT SPECIFICATION C.A.S.T. LATEST REVISION IS PART OF THIS DRAWING.

PART	MATERIAL
BODY	FABRICATED CARBON STEEL
DISC	FAB. CARBON STEEL W/ STN STL T304 EDGE
SHAFT	STAINLESS STEEL 18-8 TYPE 316
SEAT	HYCAR
BEARINGS	ANTI-FRICTION ROLLER
SEGMENTS	DUCTILE NI-RESIST. D-2

MATERIAL SPECIFICATIONS					
5	6	7	8	9	10
11	12	13	14	15	16
17	18	19	20	21	22
23	24	25	26	27	28
29	30	31	32	33	34
35	36	37	38	39	40
41	42	43	44	45	46
47	48	49	50	51	52
53	54	55	56	57	58
59	60	61	62	63	64
65	66	67	68	69	70
71	72	73	74	75	76
77	78	79	80	81	82
83	84	85	86	87	88
89	90	91	92	93	94
95	96	97	98	99	100

PRATT HENRY PRATT COMPANY
AURORA, ILL.
GENERAL ARRANGMENT
BETTIS CYLINDER OPERATED
RIA BUTTERFLY VALVE

SCALE NONE DATE 5-14-69
DRAWN BY A. F. T. CHECKED BY DAY
APPROVED R. H. T. I
PART NO.
DWG. NO. E-586

8303110296 F