

ACCELERATED DISTRIBUTION DEMONSTRATION SYSTEM

REGULATORY INFORMATION DISTRIBUTION SYSTEM (RIDS)

ACCESSION NBR: 9104020144 DOC. DATE: 91/03/27 NOTARIZED: NO DOCKET #
 FACIL: 50-250 Turkey Point Plant, Unit 3, Florida Power and Light C 05000250
 50-251 Turkey Point Plant, Unit 4, Florida Power and Light C 05000251

AUTH. NAME PLUNKETT, T.F. AUTHOR AFFILIATION Florida Power & Light Co.
 RECIP. NAME RECIPIENT AFFILIATION

Document Control Branch (Document Control Desk)

SUBJECT: Forwards Feb 1991 six month integrated schedule regulatory
 rept for Turkey Point Plant.

DISTRIBUTION CODE: A001D COPIES RECEIVED: LTR 1 ENCL 1 SIZE: 18
 TITLE: OR Submittal: General Distribution

NOTES:

	RECIPIENT ID CODE/NAME	COPIES LTTR ENCL	RECIPIENT ID CODE/NAME	COPIES LTTR ENCL
	PD2-2 LA	1 1	PD2-2 PD	1 1
	AULUCK, R	2 2		
INTERNAL:	NRR/DET/ECMB 9H	1 1	NRR/DET/ESGB	1 1
	NRR/DOEA/OTSB11	1 1	NRR/DST 8E2	1 1
	NRR/DST/SELB 8D	1 1	NRR/DST/SICB 7E	1 1
	NRR/DST/SRXB 8E	1 1	NUDOCS-ABSTRACT	1 1
	OC/LEMB	1 0	OGC/HDS3	1 0
	REG FILE 01	1 1	RES/DSIR/EIB	1 1
EXTERNAL:	NRC PDR	1 1	NSIC	1 1

NOTE TO ALL "RIDS" RECIPIENTS:

PLEASE HELP US TO REDUCE WASTE! CONTACT THE DOCUMENT CONTROL DESK,
 ROOM P1-37 (EXT. 20079) TO ELIMINATE YOUR NAME FROM DISTRIBUTION
 LISTS FOR DOCUMENTS YOU DON'T NEED!

TOTAL NUMBER OF COPIES REQUIRED: LTTR 18 ENCL 16

MA4/wt



MAR 27 1991

L-91-087

U. S. Nuclear Regulatory Commission
Attn: Document Control Desk
Washington, D. C. 20555

Gentlemen:

Re: Turkey Point Units 3 and 4
Docket Nos. 50-250 and 50-251
Integrated Schedule 6-Month Regulatory Report

Attached is the February 1991 Six Month Integrated Schedule (I/S) Regulatory Report for the Turkey Point Plant. The schedules discussed in this report reflect information updated since the August 1990 Regulatory Report which was provided to the NRC on September 27, 1990 (L-90-345). Changes of interest to the NRC discussed in this report have been reviewed with the NRC Project Manager for the Turkey Point Plant in accordance with the Integrated Schedule Plan.

Should there be any questions regarding this report, please contact us.

Very truly yours,

T. F. Plunkett
Vice President
Turkey Point Plant Nuclear

TFP/RJT/rjt

Attachment

cc: Stewart D. Ebnetter, Regional Administrator, Region II, USNRC
Senior Resident Inspector, USNRC, Turkey Point Plant

9104020144 910327
PDR ADOCK 05000250
R PDR

an FPL Group company

010078

A001
11

1901 1 1 9445

ATTACHMENT I

The following is a summary of the I/S modifications for the Six Month Integrated Schedule Regulatory Report.

The February 1991 Integrated Schedule is based on the following outages:

<u>OUTAGE DESCRIPTION</u>	<u>START</u>	<u>FINISH</u>
Unit 3 Diesel Tie-in	12/11/90	10/04/91
Unit 3 Cycle 13 Refueling	08/22/92	12/04/92
Unit 3 Cycle 14 Refueling	04/01/94	06/03/94
Unit 4 Cycle 13 Refueling	11/25/90	11/05/91
Unit 4 Cycle 14 Refueling	04/01/93	06/03/93
Unit 4 Cycle 15 Refueling	10/01/94	12/03/94

Changes to the Integrated Schedule since the last issue to the NRC, August 1990 (L-90-345 dated September 27, 1990) are as follows:

MODIFICATIONS ADDED

<u>I/S #</u>	<u>DESCRIPTION</u>	<u>LIC CAT</u>
793	3 REPL 480V MCC 3E DUE TO CORROSION	FPL
794	4 REPL 480V MCC 4E DUE TO CORROSION	FPL
1362	3 RESTRAINT MOD - PORV DISCHRG LINE	NRR
1363	4 RESTRAINT MOD - PORV DISCHRG LINE	NRR
1364	C MISSILE PROT EVAL - PLT EXT DOORS	FPL
1365	3 IMPROVE HOTWELL DRAINAGE	FPL
1366	4 IMPROVE HOTWELL DRAINAGE	FPL
1368	3 REPL MOV-535/536 ACTUATORS	FPL
1369	4 REPL MOV-535/536 ACTUATORS	FPL
1370	3 CONTAINMENT PRMS R-11 & R-12 REPL	FPL
1371	4 CONTAINMENT PRMS R-11 & R-12 REPL	FPL
1372	C CONTROL ROOM HVAC CONTROL MOD	FPL

MODIFICATIONS CANCELLED

<u>I/S #</u>	<u>DESCRIPTION</u>	<u>LIC CAT</u>
952	C EDG LUBE OIL MODIFICATIONS	FPL
1001	C EXISTING "B" EDG IDLE START/STOP	FPL
1293	3 CTL LD METERS-ADD UNITS/CHA SCALE	NRR
1294	4 CTL LD METERS-ADD UNITS/CHA SCALE	NRR
1359	C FLOOD PROTECTN 4.16 SWCHGR ROOMS	FPL

MODIFICATIONS COMPLETED

<u>I/S #</u>	<u>DESCRIPTION</u>	<u>LIC CAT</u>
50	3 MSR MODERNIZATION REPLACEMENT	FPL
67	4 REPLACE LOW PRESSURE ROTORS	FPL
293	3 SGWL CNTMT ISOLAT'N VLV REPLACEMENT	FPL
396	S BOUNDARIES FOR VISUAL LEAK INSP	FPL
417	3 REPL CCW HX THERMOMETERS W/RTD'S	FPL
418	4 REPL TUBE SIDE CCW HX TIS W/RTD'S	FPL
422	3 MAIN STM SAFETY LIFTING LEVERS	FPL
549	3 ADD'L CNTMT ELECT PENETRATIONS	FPL
744	4 SFP BRIDGE CRANE REPLACEMENT	FPL
787	C INSTALL BARRIERS IN HVAC DUCTS	I&E
792	S CNTRL ROOM LIGHTING EVALUATION	NRR
1244	4 4160V SWGR CNTRL MOD-ADD A DIODE	FPL
1262	4 REPL EXTR STM CS PPG W/ CR MOLY	FPL
1280	4 CCW HEAT EXCHANGER REPLACEMENT	FPL
1310	S ICW PMP FDN SFTY HAZARD EVALUAT'N	FPL
1355	C EOP REVIEW REV 1	FPL
1360	S STORM STUDY/PLANT DRAINAGE EVAL	FPL

PROJECT ALMEGA99 CFO		TURKEY POINT NUCLEAR PLANT INTEGRATED SCHEDULE FLORIDA POWER AND LIGHT CO.		MODE T/F	TARGET SCHEDULE 30	RUN 12MAR91 10:41	
PAGE 1	SHEET 1	TARGET SCHEDULE		INTERVAL 1 YEAR(S)	TARG FINISH 17MAY95	PROJECT 2 8483	
START 2JAN84	LINE BREAK ON NRC COMMITMENT CATEGORIES		SORT BREAKS BCODES 9		TARG DATA DATE 28NOV88	SCHEDULE BAR CHART	
FINISH 30DEC95	LINE BREAK ON CFO SUB-SYSTEM		CUR EF				
DATA DATE 19FEB91							

			1989	1990	1991	1992	1993
CFO	POST TMI CONFIRMATORY MODIFICAT"N	C AREA RADIATION MONIT"G SYST REPL CFO MOD 0341			23AUG91		
	P04-T11.20 U4 SEL SYS MODS/REPAIRS	C EDG AIR START MOTORS UPGRADE CFO MOD 0576	18JUL86		5NOV91	27APR91	
	POST PEP	4 RHR-INSTL UPGRADED 8" GLOBE VLV CFO MOD 0585	5FEB88		5NOV91	5MAR91	

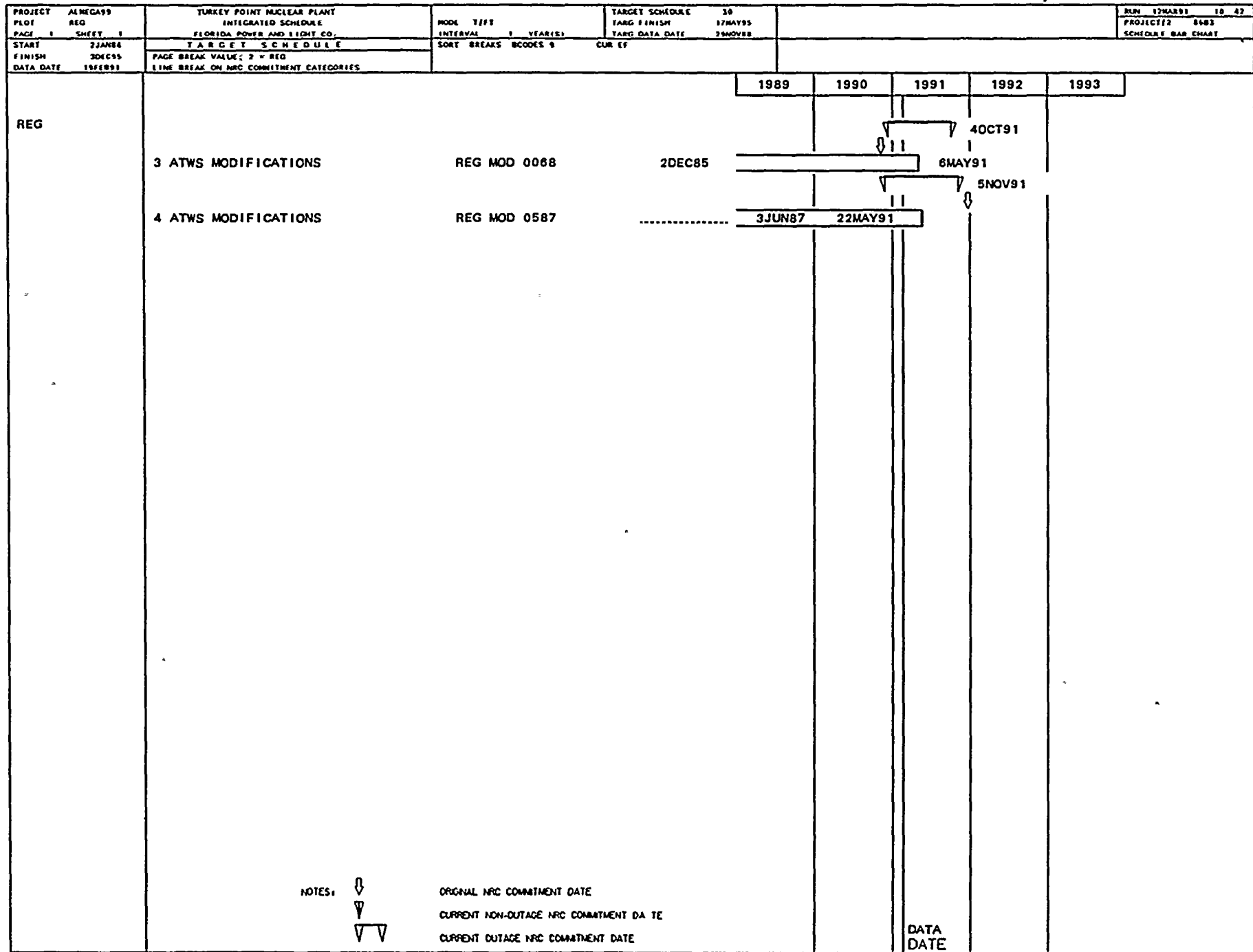
NOTES:

↓ ORIGINAL NRC COMMITMENT DATE

▽ CURRENT NON-OUTAGE NRC COMMITMENT DATE

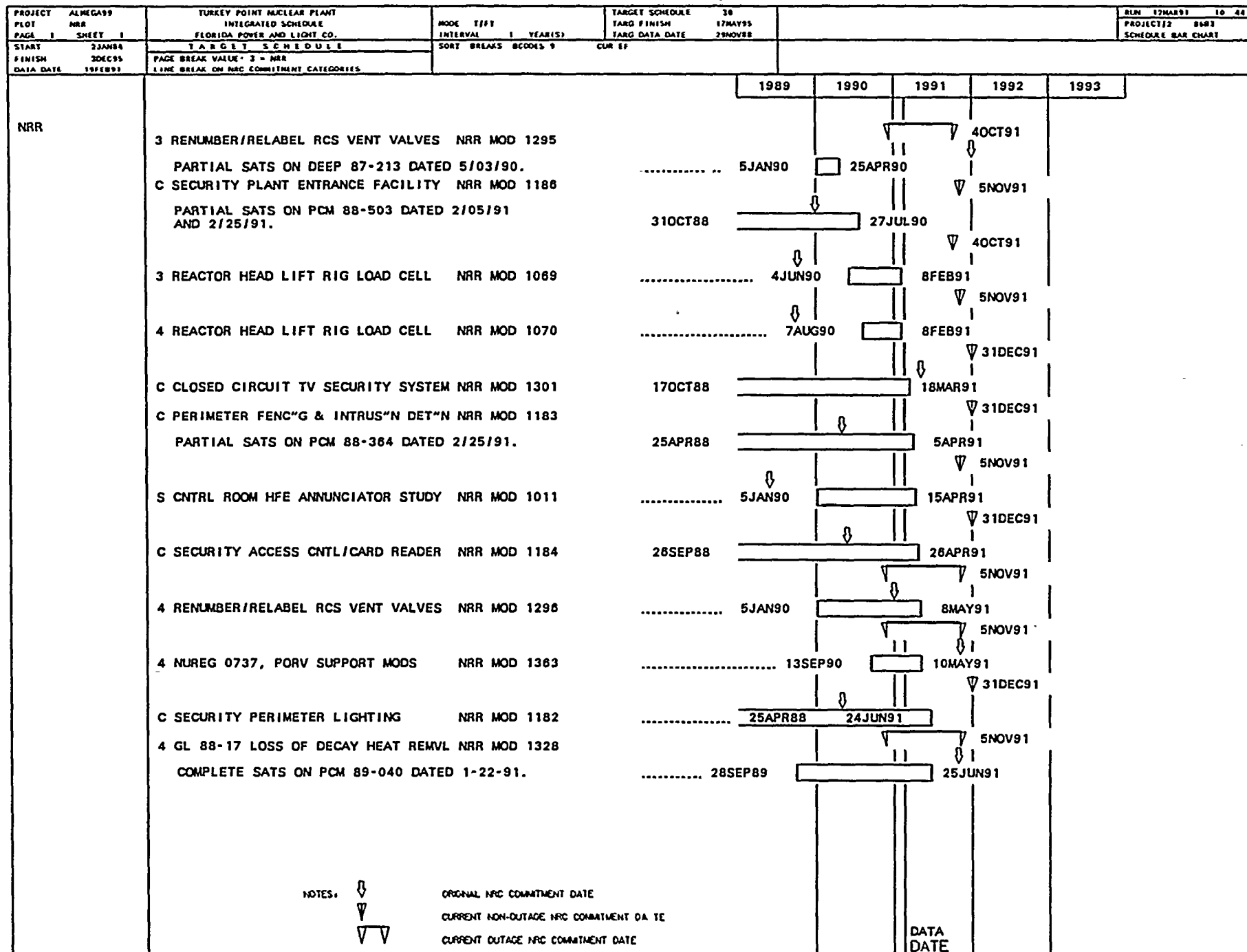
▽▽ CURRENT OUTAGE NRC COMMITMENT DATE

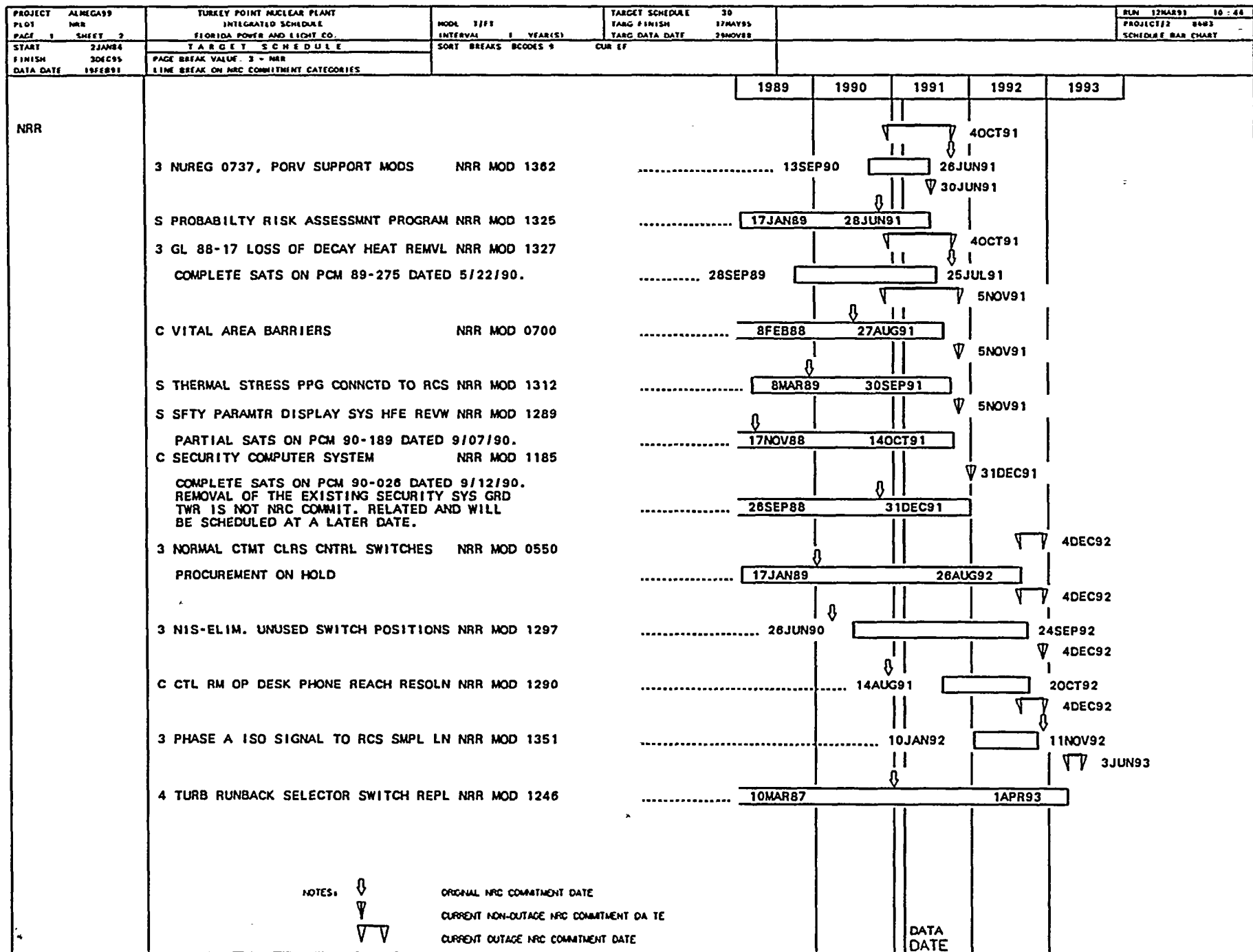
DATA DATE

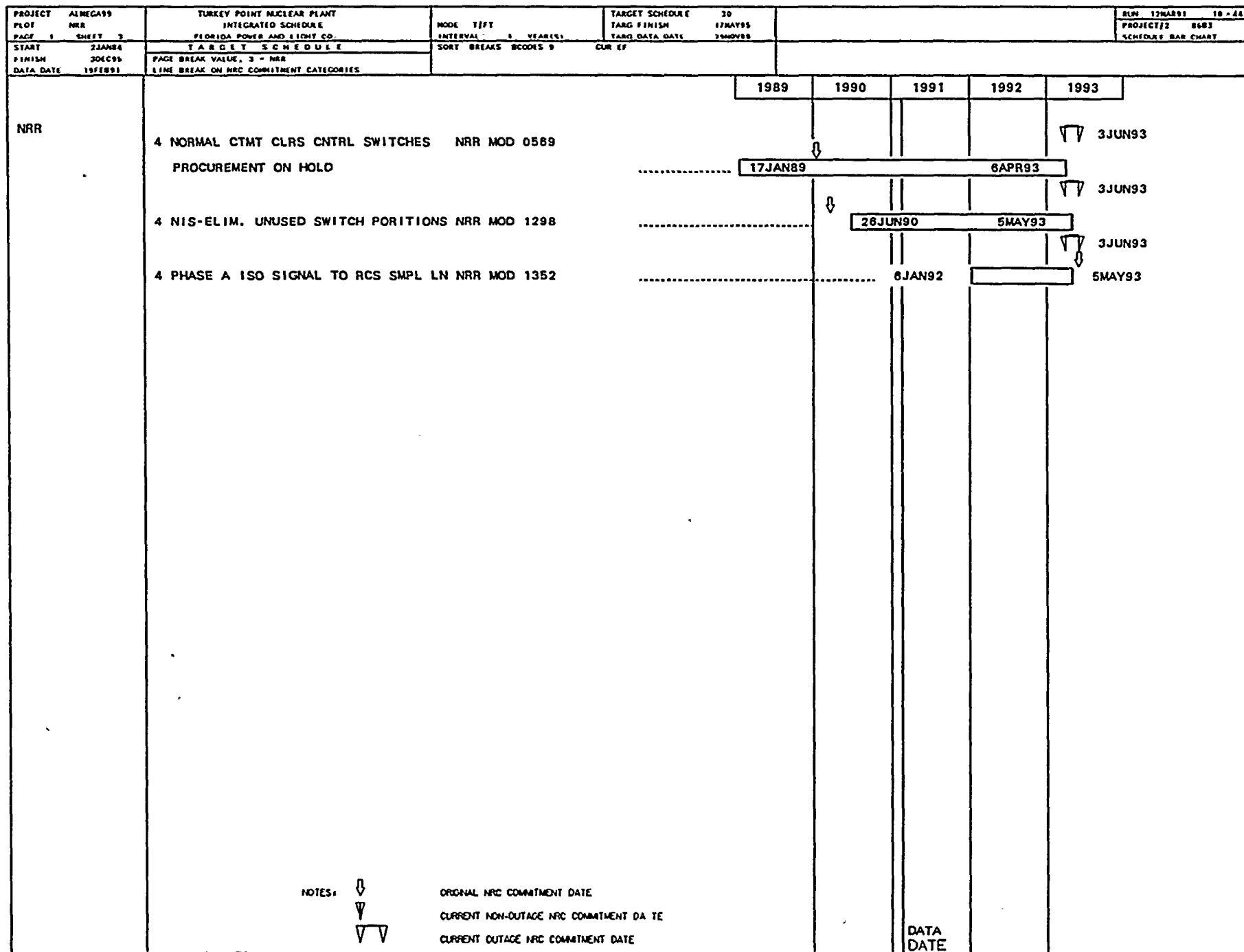


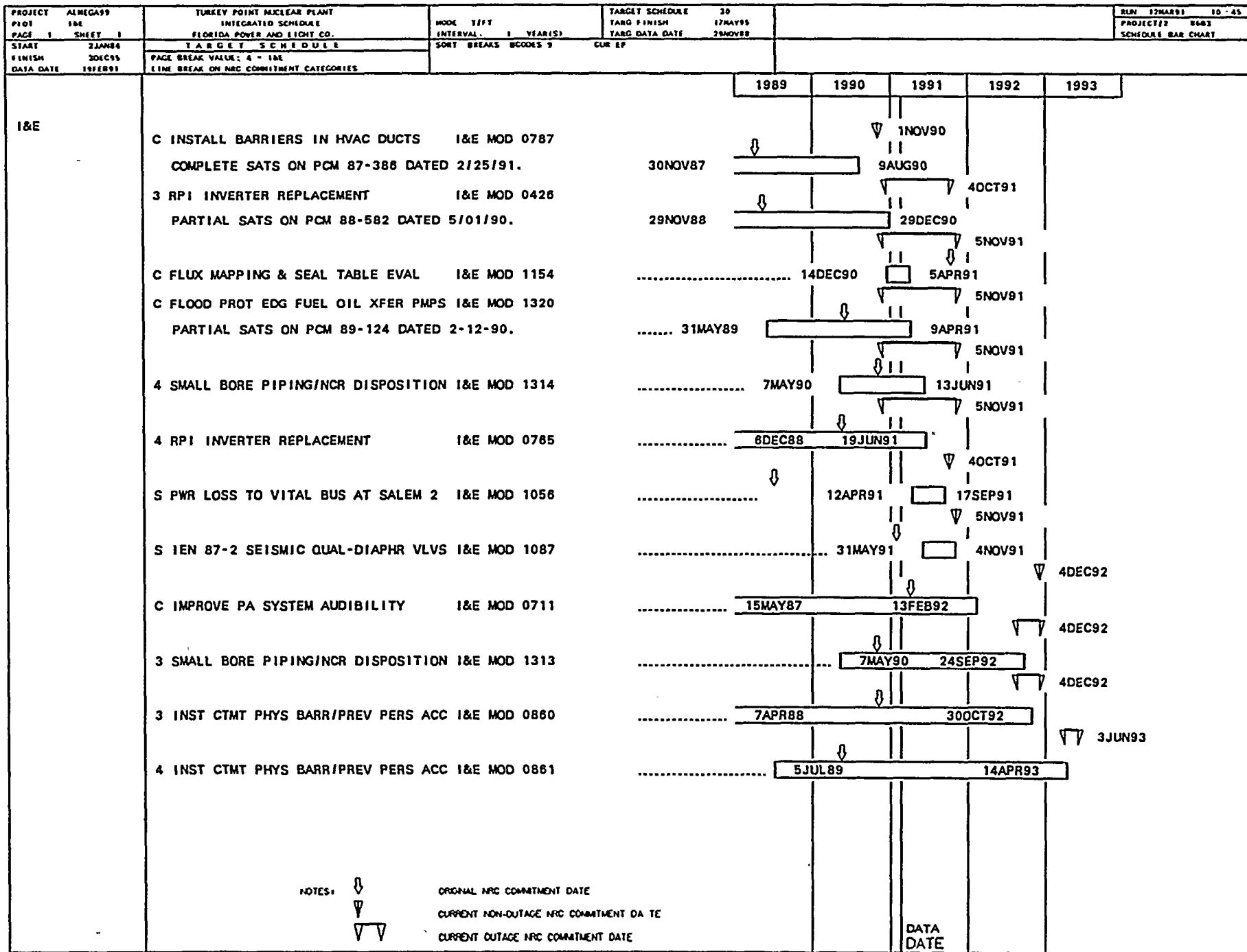


Trial	Control	MCI	AD
1	85	75	65
2	88	78	68
3	90	80	70
4	92	82	72
5	95	85	75











1
2
3
4
5
6
7
8
9
10
11
12
13
14
15
16
17
18
19
20
21
22
23
24
25
26
27
28
29
30
31
32
33
34
35
36
37
38
39
40
41
42
43
44
45
46
47
48
49
50
51
52
53
54
55
56
57
58
59
60
61
62
63
64
65
66
67
68
69
70
71
72
73
74
75
76
77
78
79
80
81
82
83
84
85
86
87
88
89
90
91
92
93
94
95
96
97
98
99
100

1

2

3

4

5

6

7

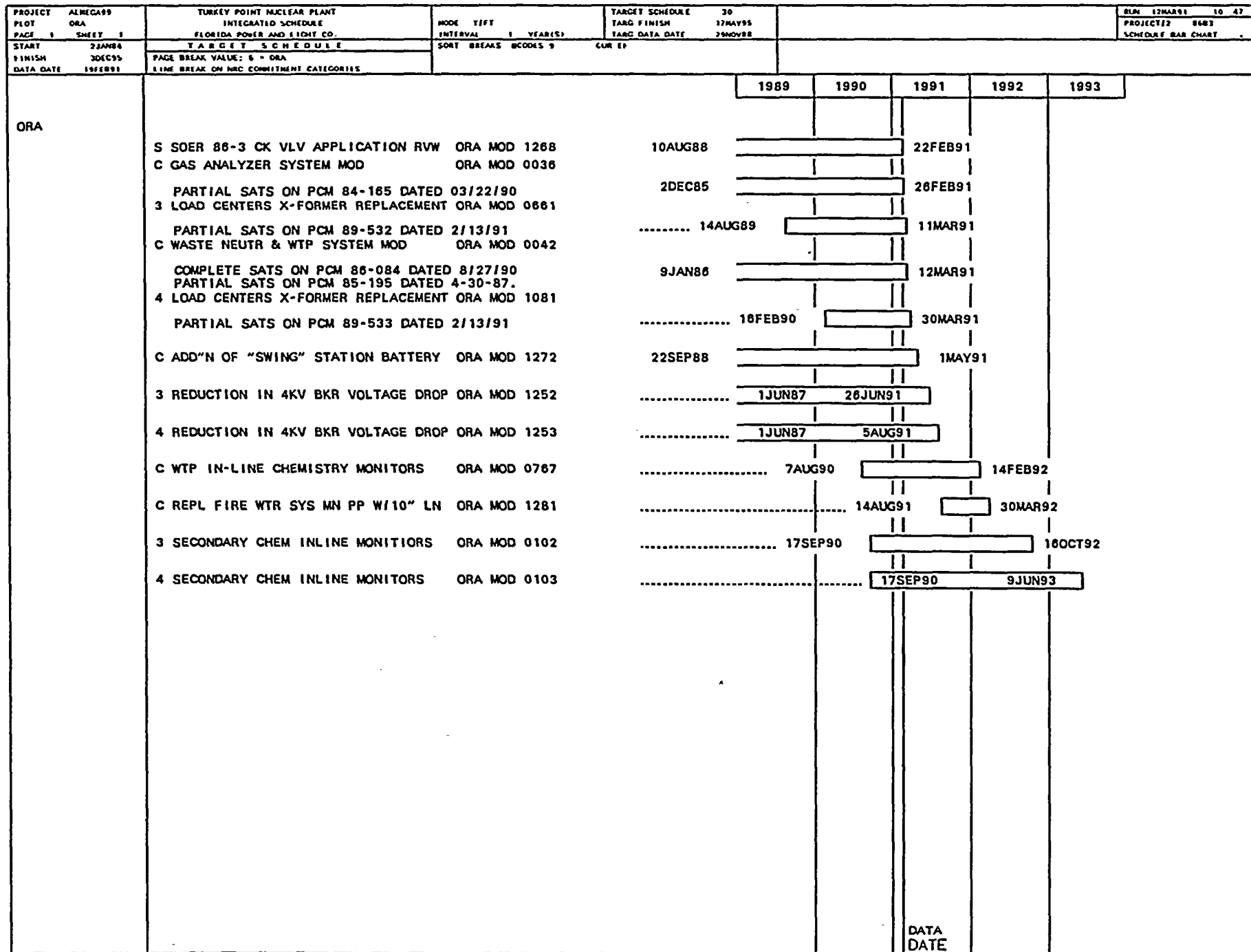
8

9

10

11

12



[illegible]

x

x

1-

P

44

28

2

35

1
2
3
4
5
6
7
8
9
10
11
12
13
14
15
16
17
18
19
20
21
22
23
24
25
26
27
28
29
30
31
32
33
34
35
36
37
38
39
40
41
42
43
44
45
46
47
48
49
50
51
52
53
54
55
56
57
58
59
60
61
62
63
64
65
66
67
68
69
70
71
72
73
74
75
76
77
78
79
80
81
82
83
84
85
86
87
88
89
90
91
92
93
94
95
96
97
98
99
100



PROJECT FPL	ALMEGA99 FPL	TURKEY POINT NUCLEAR PLANT INTEGRATED SCHEDULE FLORIDA POWER AND LIGHT CO.	MODE T/F/I INTERVAL 1 YEAR(S)	TARGET SCHEDULE TARG FINISH 17MAY95 TARG DATA DATE 25NOV88	30 17MAY95 25NOV88	RUN 12MAR91 10-48 PROJECT# 8682 SCHEDULE BAR CHART
PAGE 1 SHEET 2	2JAN84 30DEC95 19FEB91	TARGET SCHEDULE PAGE BREAK VALUE: 5 = FPL LINE BREAK ON NRC COMMITMENT CATEGORIES	SORT BREAKS BCODES 9 CUR EF			
START FINISH DATA DATE	2JAN84 30DEC95 19FEB91					
						1989 1990 1991 1992 1993
FPL	C MN CTL RM DOOR & SECURITY SYS MOD FPL MOD 1271					
	SATS REQUIRED FOR CLOSURE.	13JUL88			6FEB91	
	3 EDG SWING SWGR 3AD FPL MOD 1178					
	IMPLEMENTATION UNDER MOD #1145.	20AUG87			14FEB91	
	4 EDG SWING SWGR 4 AD FPL MOD 1180					
	IMPLEMENTATION UNDER MOD #1145.	22FEB88			14FEB91	
	4 BACKUP INSTR. AIR COMPRESSOR FPL MOD 0291					
	SATS REQUIRED FOR CLOSURE.	4APR88			19FEB91	
	3 BORIC ACID EVAP PMP UPGRADE FPL MOD 0237					
	NEED SATS FOR CLOSURE	12NOV85			20FEB91	
	C ADD'L EMERG LIGHTING FOR APP. R FPL MOD 0592					
	PARTIAL SATS ON PCM 86-213 (REV 6) 10-31-89	12JUN86			20FEB91	
	C ELECT DWG SEPARAT'N & RENUMBERING FPL MOD 1095					
	PARTIAL SATS ON PCM 87-279 DATED 04-13-89.	5JUN87			20FEB91	
	4 MSIV SAFETY REL AIR ACCUM SYS FPL MOD 1258		11JUN89			
	PARTIAL SATS ISSUED 5/24/89.	10MAY88			20FEB91	
	S ICW CK VLV OPER W/IA FAILURE FPL MOD 1283					
	ENGINEERING LETTER REQUIRED FOR CLOSURE.	26OCT87			20FEB91	
	4 TPCW HX ISOLTN - CV2201 FAIL CLSE FPL MOD 1285					
	PARTIAL SATS ON PCM 88-346 DATED 04-29-89.	15NOV88			20FEB91	
	3 SFP BRIDGE CRANE REPLACEMENT FPL MOD 0745					
	PARTIAL SATS ON PCM 88-170 DATED 12-17-90.	20JAN88			22FEB91	
	4 SPENT FUEL POOL RERACKING FPL MOD 1190					
	COMPLETE SATS ON PCM 87-405 DATED 2-1-91.	31JUL87			25FEB91	
	PARTIAL SATS ON PCM 88-319 DATED 12-6-90.					
	3 REMOVAL OF TPCW AMERTAP SYSTEM FPL MOD 1317					
	TPCW AMERTAP SYSTEM WORK WAS SPLIT FROM MOD 531. TPCW AMERTAP WAS NOT NRC COMMITMENT RELATED.	18NOV86			1MAR91	
	PARTIAL SATS ON PCM 86-196 DATED 4-28-88.					
	C W.T.P. FLOW METERS UPGRADE FPL MOD 0151	11FEB86			6MAR91	
	C EDG HC TURBO/IDLE GEAR STUB SHAFT FPL MOD 0509	16MAR88			9MAR91	
	C NEW EDG BLDGS LTG FIRE COMM HVAC FPL MOD 1175	1SEP87			11MAR91	
	4 ATMOSPHERIC DUMP VLV REPLACEMENT FPL MOD 1260	3MAY88			19MAR91	
	3 REACTOR CAVITY HANDRAIL FPL MOD 0233					
	PARTIAL SATS ON PCM 88-168 DATED 03/29/90	2MAR87			20MAR91	
						DATA DATE

PROJECT ALMGA99 P101 FPL		TURTLE POINT NUCLEAR PLANT INTEGRATED SCHEDULE FLORIDA POWER AND LIGHT CO.		MODE TIT INTERVAL 1 YEAR(S)		TARGET SCHEDULE 30 TARG FINISH 17MAY95 TARG DATA DATE 29NOV88		BLN 12MAR91 10:48 PROJECT/2 8483 SCHEDULE BAR CHART	
PAGE 1	SHEET 3	TARGET SCHEDULE		SORT BREAKS CODES 9		CUR EF			
START 22JAN84	FINISH 30DEC95	PAGE BREAK VALUE: 9 = FPL							
DATA DATE 19FEB91		LINE BREAK ON MDC COMMITMENT CATEGORIES							
FPL				1989	1990	1991	1992	1993	
S ECCS HEAT SINK UPDATE FPL MOD 0382		6MAY87				21MAR91			
C NEW EDG FIRE PROTECTION FPL MOD 1178		11MAY88				28MAR91			
4 ADD & RELOCATE AFW N2 SUPPLY FPL MOD 0218									
COMPLETE SATS ON PCM 85-176 DATED 06-27-87.		2DEC85				29MAR91			
COMPLETE SATS ON PCM 88-045 DATED 04-04-88.									
PARTIAL SATS ON PCM 88-184 DATED 04-21-89.									
4 PROCURE & INSTALL TWO NEW EDG'S FPL MOD 1138									
PARTIAL SATS ON PCM 87-263 DATED 2/27/91.		28FEB87				29MAR91			
3 PORV STROKE TIME ENHANCEMENT FPL MOD 1315									
PARTIAL SATS ON PCM 89-585 DATED 04/18/90		24OCT88				2APR91			
4 REPLACE SI CHK VLVS 4-874A & B FPL MOD 1356		27DEC89				6APR91			
3 CHARG PMP RELIEF VLV/DRN LN SUPPT FPL MOD 1323		17OCT89				10APR91			
4 REACTOR CAVITY HANDRAIL FPL MOD 0080		2MAR87				13APR91			
3 ATMOSPHERIC DUMP VLV REPLACEMENT FPL MOD 1259									
PARTIAL SATS ON PCM 88-517 DATED 05-11-90		3MAY88				13APR91			
AND 07-18-90									
4 NORM CNTMT CLRS CAPACITY INCREASE FPL MOD 0903									
PARTIAL SATS ON PCM 87-026 DATED 04-22-89.		7APR88				19APR91			
4 PORV STROKE TIME ENHANCEMENT FPL MOD 1316		5DEC88				25APR91			
4 UPRD RCP OIL LIFT SYS/LOWR COOLR FPL MOD 1021		3OCT88		9MAY91					
S PROV ACCEPT CRIT FOR OIL XFR PMPs FPL MOD 0928									
C EDG DIESEL/D.O.S.T. BLDG CONST FPL MOD 1174		20FEB91				14MAY91			
PARTIAL SATS ON PCM 87-259 DATED 1/04/90		8MAY87		17MAY91					
AND 2/27/91.									
C INVERTER RM HVAC UPGRADE/PERM FIX FPL MOD 1218		4APR88		23MAY91					
C DES & PURCH STA BATTERY CHARGERS FPL MOD 1275		13JUL88		23MAY91					
C SECONDARY SIDE HIGH-ENERGY PIPING FPL MOD 0892		13JUN88		29MAY91					
C BORIC ACID CONCENTRATION REDUCTN FPL MOD 1311		12JUN89				4JUN91			
4 ADD'L CNTMT ELECT PENETRATIONS FPL MOD 0786		30MAR89				13JUN91			

[illegible]

