

# ACCELERATED DISTRIBUTION DEMONSTRATION SYSTEM

## REGULATORY INFORMATION DISTRIBUTION SYSTEM (RIDS)

ACCESSION NBR:8806160023 DOC.DATE: 88/06/08 NOTARIZED: NO DOCKET #  
 FACIL:50-250 Turkey Point Plant, Unit 3, Florida Power and Light C 05000250  
 50-251 Turkey Point Plant, Unit 4, Florida Power and Light C 05000251

AUTH.NAME AUTHOR AFFILIATION  
 CONWAY,W.F. Florida Power & Light Co.

RECIP.NAME RECIPIENT AFFILIATION  
 Document Control Branch (Document Control Desk)

SUBJECT: Forwards 6 month rept of integrated schedule for plant.

DISTRIBUTION CODE: A001D COPIES RECEIVED:LTR 1 ENCL 1 SIZE: 33  
 TITLE: OR Submittal: General Distribution

### NOTES:

	RECIPIENT		COPIES			RECIPIENT		COPIES		
	ID	CODE/NAME	LTTR	ENCL		ID	CODE/NAME	LTTR	ENCL	
	PD2-2	LA	1	0		PD2-2	PD	5	5	
	EDISON,	G	1	1						
INTERNAL:	ARM/DAF/LFMB		1	0		NRR/DEST/ADS	7E	1	1	
	NRR/DEST/CEB	8H	1	1		NRR/DEST/ESB	8D	1	1	
	NRR/DEST/MTB	9H	1	1		NRR/DEST/RSB	8E	1	1	
	NRR/DOEA/TSB	11	1	1		NRR/PMAS/ILRB12		1	1	
	NUDOCS-ABSTRACT		1	1		OGC 15-B-18		1	0	
	(REG FILE)	01	1	1		RES/DE/EIB		1	1	
EXTERNAL:	LPDR		1	1		NRC PDR		1	1	
	NSIC		1	1						

TOTAL NUMBER OF COPIES REQUIRED: LTTR 22 ENCL 19

R  
I  
D  
S  
/  
A  
D  
D  
S  
  
R  
I  
D  
S  
/  
A  
D  
D  
S





JUNE 8 1988

L-88-144


U. S. Nuclear Regulatory Commission  
Attn: Document Control Desk  
Washington, D. C. 20555

Gentlemen:

Re: Turkey Point Units 3 and 4  
Docket Nos. 50-250 and 50-251  
Integrated Schedule 6-Month Report

Attached is the 6-Month Report of the Integrated Schedule for Turkey Point Plant. The schedule discussed in this report reflects information as of the issuance date of May 20, 1988. Updated information will be provided in subsequent reports. The changes to the schedules discussed in this summary have been reviewed with members of the NRC Staff in accordance with the Integrated Schedule Plan. In accordance with the Turkey Point Facility Licenses, the next Integrated Schedule (I/S) Regulatory Report will be issued in November 1988.

Very truly yours,

  
W. F. Conway  
Senior Vice President-Nuclear

WFC/RG/gp

Attachment

cc: Dr. J. Nelson Grace, Regional Administrator,  
Region II, USNRC  
Senior Resident Inspector, USNRC, Turkey Point Plant

RG/020.ISM

8806160023 880608  
PDR ADCK 05000250  
R DCD

  
an FPL Group company

200 2 200

**ATTACHMENT 1**  
**6 MONTH SUMMARY REPORT**

MOD STATUS REPORT  
NOV - MAY UPDATE  
MAY 16, 1988

MODIFICATIONS ADDED SINCE NOVEMBER ISSUE

I/S #	DESCRIPTION	LIC. CAT.
776	3 CHARGING PUMP VENTS	FPL
793	3 CORROSION OF 480V AC MCC 3E	FPL
794	4 CORROSION OF 480V AC MCC 4E	FPL
952	3 INSTL MANIPULATOR CRANE AIR COMPR	FPL
853	4 INSTL MANIPULATOR CRANE AIR COMPR	FPL
855	S EVAL DES.BASIS ACCIDENT HT LD REM	FPL
869	4 RELOCATE FM-113 MAG FLOW CONVERTR	FPL
889	C PLANT LIGHTING UPGRADE PH I & II	FPL
975	3 MODIFICATION TO #3 GAS STRIPPER	FPL
1001	C EXISTING "B" EDG IDLE START/STOP	NRR
1010	3 MSR INSTRUMENTATION	FPL
1013	4 MODIFICATION TO #4 GAS STRIPPER	FPL
1053	S METEOROLOGICAL SYSTEMS EVALUATION	FPL
1058	3 INSTALL SFP STORAGE BOXES	FPL
1060	4 INSTALL SFP STORAGE BOXES	FPL
1069	3 REACTOR HEAD LIFT RIG LOAD CELL	NRR
1070	4 REACTOR HEAD LIFT RIG LOAD CELL	NRR
1073	4 REACTOR CAVITY SEAL RING	FPL
1082	4 RX MANIP CRANE LOAD TEST DEVICE	FPL
1105	C AFW PUMPS-GOVRNR VLV STEM GUARDS	FPL
1113	4 CONNECT GAMMAMETRICS TO NIS RCRDR	FPL
1114	S STUDY FAILURE MODE/GE AUX RELAYS	FPL
1129	3 REPL PRMS R-11/R-12 OUTPUT RELAYS	FPL
1130	4 REPL PRMS R-11/R-12 OUTPUT RELAYS	FPL
1165	C "B" EDG STARTNG AIR TK PI ISO VLV	FPL
1202	C CHEMICAL STORAGE BLDG CENTRAL A/C	FPL
1203	4 CHARGING PUMP VENTS	FPL
1207	3 REPLACE G.E. CR120BD AUX RELAYS	FPL
1208	4 REPLACE G.E. CR120BD AUX RELAYS	FPL
1209	3 CONTAINMENT TENDON SURVEILLANCE	REG
1210	4 CONTAINMENT TENDON SURVEILLANCE	REG
1213	C LIVE LOADING OF VALVE PACKING	FPL
1217	C PLANT OUTFALL INVESTIGATION-PTN	FPL
1219	3 S.A.S. AS BUILT DRAWINGS	FPL
1220	4 S.A.S. AS BUILT DRAWINGS	FPL
1235	3 CONNECT GAMAMETRICS TO NIS RECRDR	FPL
1236	C EDG CLG WTR DISCH THERMOMETER	FPL
1237	4 TURBINE BLADE RING EROSION	FPL
1244	4 4160 V SWGR CNTRL MOD - 14 DIODES	FPL
1245	3 TURB RUNBACK SELECTOR SWITCH REPL	FPL
1246	4 TURB RUNBACK SELECTOR SWITCH REPL	FPL

1249	S MOV THERMAL OVERLOAD HTR SELECTN	I&E
1252	3 REDUCTION IN 4KV BKR VOLTAGE DROP	NRR
1253	4 REDUCTION IN 4KV BKR VOLTAGE DROP	NRR
1254	C ADD FUSE SPEC TO BKR LIST & DWGS	NRR
1255	4 CHARG PUMP SUCTN QUICK DISCONNECT	FPL
1263	3 CHARGING PUMP CHECK VALVE EVAL"N	FPL
1264	4 CHARGING PUMP CHECK VALVE EVAL"N	FPL
1267	3 REPL REGEN HX/PZR RLF LN SNUBBERS	FPL
1268	S SOER 86-3 CK VLV APPLICATION RVW	ORA

MODIFICATIONS COMPLETED SINCE NOVEMBER ISSUE

I/S #	DESCRIPTION	LIC. CAT.
11	C CABLE TRAY MODIFICATIONS	I&E
66	3 REPLACE LOW PRESSURE ROTORS	FPL
104	C SECURITY LIGHTING UPGRADE	FPL
114	3 CNTMT TEMP & NIS FLUX LVL RECORDR	FPL
130	3 PRMS DRAWERS REPLACEMENT	FPL
214	P5T3 PEP-PLT REF SIMULATOR	CFO
246	3 AFW STOP CHECK VALVE FAILURE	FPL
272	Plt4 PEP-PHASE IV SITE FAC UPGRD	CFO
332	S HGA RELAY - PART 21 REPLACEMENT	I&E
338	S POTABLE WATER CONCEP. DES. STDY	FPL
346	3 HI RNG GAMMA RAD ANN. ALARM CHECK	FPL
347	4 HI RNG GAMMA RAD ANN. ALARM CHECK	FPL
358	S REPL OBSOLETE ASCO SOLENOID VLVs	FPL
402	3 ICW CHECK VLV REPL/PERM FIX	I&E
403	4 ICW CHECK VLV REPL/PERM FIX	I&E
407	S STATION BATTERY LOADING EVAL	ORA
412	C REPL 14" GATE VLV @ RAW H2O TANK	FPL
416	C DIESEL OIL TANK SAMPLING PLATFORM	FPL
453	3 G.E. PK-2 TEST BLOCKS	FPL
459	S VTL PWR INVTR OPERATING CONCERNS	FPL
493	S RESPONSE TO BROKEN PUMP SHAFT	FPL
500	S EDG LOADING (EP-33)	FPL
520	3 RHR PUMP RECIRCULATION FLOW	FPL
530	S BORIC ACID STOR TK LVL XMTR CALIB	FPL
551	S PWR SOURCE TO WIDE RNG RAD MONTR	FPL
566	4 RHR PUMP RECIRCULATION FLOW	FPL
581	4 CNTMT TEMP & NIS FLUX LVL RECORDR	FPL
621	S CCW/TPCW/EDG CHROMATE REMOVAL	I&E
633	S GUYON ALLOYS 10CFR PART 21	FPL
647	S 125V DC POWER PARTIAL LOSS	I&E
649	C UPG PAX PHONE & SYS 85 MODULES	ORA
651	S CNTMT BLDG PROT COATINGS TESTING	FPL
710	S EVALUATE EDG EQUIPMENT MODS	I&E
721	S INTAKE HUB BUSTER&WATER LVL MEANS	FPL
746	S TECHNICAL SPECIFICATION IMPLEMENT	I&E
800	S TECH SPEC TEST REQUIREMENT	FPL
803	S PROC TP221 FOR O&M OF STA BATTERY	I&E
804	S REV FSAR TO INCL GOULDS GNB BATT	I&E





805	S EXCESS AC/DC CNTL CKT VOLT DROP	ORA
806	S STA BATT OPER & ACCEPT CRITERIA	FPL
811	S EVAL CURRENT OPER OF CCW PUMPS	I&E
812	S 3C CCW PUMP SHAFT SEAL LEAKAGE	I&E
813	S EMERG CTMT COOLERS OPERAB EVAL	FPL
814	S MTR SHAFT BRG FIT ACCEPT CRIT/CCW	I&E
815	S PROVIDE RWST TEMPERATURE INDICA	FPL
816	S RHR VLV OPERABILITY (605 & 758)	I&E
817	S DECAY HEAT REMOVAL REPORT	FPL
825	S OPER PRCDR 4704.6 ECC ACCEP CRIT	I&E
836	S MSI VALVE OPEN"G PROBLEM SOLUTION	I&E
837	S MSI VERIFY STROKE LENGTH	I&E
838	S MSI REVIEW MAINTENANCE HISTORY	FPL
839	S MSI REVISE MAINTENANCE PROCEDURES	I&E
841	S MSIV IE REPORT RVW EWO O/M 7206	FPL
904	C REPL WRONG SIZE EXP JNT/ICW PMP	FPL
905	C REPLACE ICW PUMP MOTOR COUPLINGS	FPL
911	S ICW SYS TEST EVAL & RECOMMENDT"N	FPL
913	S INSTR AIR REGULATOR DRAIN LINES	FPL
920	S REVISE IA SYSTEMS DESCRIPTIONS	FPL
923	S DEVELOP AIR LEAK INSP PROGRAM	FPL
926	S EVAL EDG OPER&HIGHR THAN BASE CAP	FPL
929	S REM BAT RM CHILLERS FOR EDG LDS	FPL
931	S ADD OP GUIDANCE TO EDG INST METER	FPL
932	S REV OPS & ELIM UNNEC ACCPT CRIT	FPL
933	S CNFIRM 200KW IS SINGLE LARGEST LD	FPL
940	S REV HIGH TEMP INSUL CONCERN	FPL
944	S U3 MSIV LINE PIN DAMAGE CAUSE	FPL
1149	C REPL AUTO-XFR SWITCH DP312A & 412A	FPL
1181	C NEW EDG"S CONCEPTUAL DESIGN	FPL
8965	P4T11.17 U3 SAF ENGR GRP FINAL RPT	CFO
8967	P4T11.18 U3 DRAWING FOLLOWUP	CFO
8977	P3T7 PEP-IMPL PHASE 4 PRCDR REVIS"N	CFO

MODIFICATIONS DELETED SINCE NOVEMBER ISSUE

I/S #	DESCRIPTION	LIC. CAT.
52	C DRY STORAGE WAREHOUSE - PHASE II	FPL
94	C NEAR SITE LIGHTED HELI-PORT	FPL
222	C AFW PMP/TURB AREA VITAL BARR. UPG	I&E
273	C ACCESS & DRESS FACILITY EXTENSION	FPL
329	C CTR RM DOORSET/REPAIR	FPL
421	C HAZARDOUS WASTE STORAGE BLDG	FPL
543	S AFW RELIABILITY/FOLLOW-ON EFFORT	FPL
558	S INADVERT GEN ENERGIZATION PROTECT	FPL
559	3 REMOVE LOAD FREQUENCY & CNTL SYS	FPL
604	C INST CARD READERS IN NEW VTL AREA	FPL
631	S EMERG OPERATING PROCEDURE REVIEW	FPL
648	C 480V LOAD CNTR VOLTAGE INDICATORS	FPL
656	C FIRE EQUIPMENT STORAGE FACILITY	FPL
663	3 METERING X-DUCERS FOR WATT & VARS	FPL

664	4 METERING X-DUCERS FOR WATT & VARS	FPL
669	3 INSTL RCDT DIGITAL GAGE READOUT	FPL
670	4 INSTL RCDT DIGITAL GAGE READOUT	FPL
684	C PURCHASE WASTE BAG MONITOR EQUIPT	FPL
686	C RADIOACTIVE MATL SEGREGT"N TABLE	FPL
690	4 PRESSURIZER TEMP SENSOR REPLMNT	FPL
691	3 PRESSURIZER TEMP SENSOR REPLMNT	FPL
702	S SPARE PARTS HARDCARD EVALUATION	FPL
726	S FLAG 1 LINE BKUP RELAY PROT ADDN	FPL
731	S ENGR SUPPT FOR 10CFR 50.59 EVAL"N	FPL
732	S ENGINEER SUPPORT FOR NRC AUDIT	FPL
733	S ENGINEERING EVAL OF NRC ISSUES	FPL
734	S ENGINEERING EVAL OF NRC NOTICES	FPL
737	S ENGINEERING SITE MAINT SUPPORT	FPL
738	S ENGINEERING SITE OUTAGE COORD"N	FPL
739	S ENGINEER"G EVAL SPARE PARTS SPECS	FPL
743	C SECURITY OFFICE & CONTRACT FACILITY	FPL
757	C CNTL RM LINE REPEATR PNL REMOVAL	FPL
760	C TEDB SITE CONTRACTOR ENGR SUPPORT	FPL
847	S RMS LICENSING & MAINTENANCE PRCDR CHANGE	FPL
856	C CHEMICAL STORAGE & DISTRIBUTION AREA	FPL
954	C REPL EDG IDLE GEAR STUB SHAFT	FPL
965	S PERFORM HFE REVIEW ON PCM IMPLMNTN > 9/85	FPL
966	S DEVELOP HFE MANUAL FOR FUTURE PCM	FPL
972	3 CONTAINMENT PAINTING	FPL
1014	3 ADD DPI TO SFP EXHST HEPA FILTRS	FPL
1015	4 ADD DPI TO SFP EXHST HEPA FILTRS	FPL
1084	C WTP ACID/CAUSTIC UNLOAD X-FER STA	FPL
1085	3 REPL PNLS WITH DRS ON QR81 & QR82	FPL
1086	4 REPL PNLS WITH DRS ON QR81 & QR82	FPL
1089	S WALKWAY BETWEEN NAB,MB & TURBINE DECK	FPL
1123	3 REFUELING TOOL STORAGE RACKS	FPL
1124	4 REFUELING TOOL STORAGE RACKS	FPL
1141	3 EDG TRAIN A TEMP MODIFICATIONS	FPL
1151	3 INSTALL IN-LINE NH4 ANALYZERS	FPL
1152	4 INSTALL IN-LINE NH4 ANALYZERS	FPL
1179	3 EDG TRAIN B TEMP MODIFICATIONS	FPL
1187	C OPERATING ENGR BLDG RELOCATION	FPL
1188	C MACHINE SHOP FACILITY	FPL
1189	C CONTRACTOR ENTRY BLDG SO OF NAB	FPL
1191	C DRAINAGE SYS AT NAB NMB & HP BLDG	FPL
1195	C WALKWAY BETWEEN NAB AND NMB	FPL
1196	C NEW BRIDGE OVER LAKE WARREN	FPL
1197	C BACKFIT CONSTRUCTION OFFICE	FPL

MODIFICATIONS COMBINED SINCE NOVEMBER ISSUE

DESCRIPTION	LIC. CAT.
1) MOD 1149 (U3) & 1150 (U4) WERE COMBINED INTO; MOD 1149 - C REPL AUTO-XFR SWITCH DP312A & 412A	FPL
2) MOD 1222 - C SELECT SAFETY SYS DESIGN VER - ORI 15 SYS IS A COMBINATION OF THE FOLLOWING MODS;	CFO
981 C AFW SEL SYS DESIGN VERIFICATION	
982 C MS ISOL SEL SYS DSN VERIFICATION	
983 C CTMT ISOL SEL SYS DSN VERIFICAT"N	
984 C CTMT SPRAY SEL SYS DSN VERIFICATN	
985 C ECC SEL SYS DESIGN VERIFICATION	
986 C EC FILTER SEL SYS DSN VERIFICAT"N	
987 C CCW SEL SYS DESIGN VERIFICATION	
988 C ICW SEL SYS DESIGN VERIFICATION	
989 C IA SEL SYS DESIGN VERIFICATION	
990 C SI SEL SYS DESIGN VERIFICATION	
991 C RHR SEL SYS DESIGN VERIFICATION	
992 C EMERG AC PWR SEL SYS DESIGN VERIF	
993 C VTL AC/DC PWR SEL SYS DSN VERIF	
994 C CHEM/VOL CNTL SEL SYS DSN VERIF	
1198 S RPS SEL SYS DESIGN VERIFICATION	
3) MOD 1223 - C SEL SAFETY SYS DESIGN VERIF-ARMS/PRMS/NCC IS A COMBINATION OF THE FOLLOWING MODIFICATIONS;	CFO
1199 S ARMS SEL SYS DESIGN VERIFICATION	
1200 S PRMS SEL SYS DESIGN VERIFICATION	
1201 S NORM CNTMT CLRS SEL SYS DSN VERIF	
4) MOD 1224 - C ON-GOING DESIG BASIS ENHANCEMENT-ORI 15 SYS IS A COMBINATION OF THE FOLLOWING MODIFICATIONS;	FPL
1022 S AFW SYS ONGO"G DES BAS ENHANCEMNT	
1023 S SI SYS ONGO"G DES BAS ENHANCEMENT	
1024 S CTMT SPRAY ONGO"G DES BAS ENHANCE	
1025 S CTMT ISO ONGO"G DES BAS ENHANCEMT	
1026 S EMERG AC PWR ONGO"G DES BAS ENHAN	
1027 S VTL DC PWR ONGO"G DES BAS ENHANCE	
1028 S MSIV SYS ONGO"G DES BAS ENHANCEMT	
1029 S EMERG CLRS ONGO"G DES BAS ENHANCE	
1030 S EMERG FLTRS ONGO"G DES BAS ENHANC	
1031 S IA SYS ONGO"G DES BAS ENHANCEMENT	
1032 S RX PROT ONGO"G DES BAS ENHANCEMNT	
1033 S CHEM & VOL CNTL DES BAS ENHANCEMT	
1034 S CCW SYS ONGO"G DES BAS ENHANCEMT	
1035 S ICW SYS ONGO"G DES BAS ENHANCEMT	
1036 S RHR SYS ONGO"G DES BAS ENHANCEMT	
5) MOD 509 - C ADDITION OF EDG HIGH TURBO CHARGER IS A COMBINATION OF THE FOLLOWING MODIFICATION; MOD 954 - C REPL EDG IDLE GEAR STUB SHAFT	FPL

[illegible]

## NRC MODIFICATIONS WITH DATE CHANGES

### SCHEDULE A COMPLETION DATE CHANGES

#### MOD 14 - CONTROL ROOM HABITILITY HVAC

This project requires both units to be operating and stabilized at power for 30 days prior to implementing a one time Technical Specification (TS) change that allows a 45 day Limiting Condition for Operation (LCO). During this LCO the HVAC modification will be completed. The NRC commitment date was January 14, 1988 and has been moved to June 17, 1988 based upon a 45 day LCO commencing on the projected permanent HVAC OOS date of May 4, 1988. This date change is in accordance with the NRC approved TS change.

#### MOD 25 - UNIT 3 ALTERNATE SHUTDOWN

A meeting was held on December 3, 1987 to develop a plan and schedule for the completion of training and procedures for Mod 25. Based on input from that meeting, the expected completion is now July 6, 1988. May 1988 was the previous completion date for procedures.

#### MOD 214 - P5T3 PEP-PLT REF SIMULATOR

The NRC commitment date was changed from March 1, 1988 to June 1, 1988 for completion of simulator acceptance testing with concurrence from Region II.

#### MOD 272 PEP - PROJECT 1 TASK 4 - PHASE IV SITE FACILITY UPGRADE

The NRC commitment date of February 29, 1988 was not met for the relocation of personnel into the new maintenance facility. FPL considers this PEP task to be completed as of March 31, 1988.

#### MOD 0250 Unit 3 AFW FLOW TRANSMITTER REPLACEMENT

The remaining work is delayed pending a Technical Department test which cannot be performed until a safety evaluation is complete. In addition, a review of this modification is on-going to determine if this is an NRC committed modification.

#### MOD 227 - C AFW PMP/TURB GOV BLEEDDOWN DEVICE

This MOD is currently pending deletion/closeout based on the results of an engineering study (JPT-PTPO-87-2726) which concludes that no modifications are to be performed.

SCHEDULE B COMPLETION DATE CHANGES

MOD 820 - C RHR VALVE OPERABILITY 864 & OTHER VALVES

The schedule was revised based on priority in accordance with the I/S Program. This MOD was originally scheduled for completion June 14, 1988 and has moved to February 28, 1989.

MOD 836 MSIV Opening Problem Solution

This completion date has moved from October 30, 1988 to January 11, 1989 because of the change in the Unit 4 refueling date, now scheduled to begin September 1988.

MOD 958/959 Units 3/4 PROJECT "V" GUARD FOR MG-6 SAFEGUARDS

This project is the installation of guard rails around the MG-6 Safeguard Rack. The completion of these mods slipped due to the change in the Unit 3 outage window and Unit 4 outage resource limits. The completion date has been moved from the Unit 4 refueling outage (December 16, 1988) to Unit 3 refueling outage (September 22, 1989).

**ATTACHMENT 2**

**MAY 1988 INTEGRATED SCHEDULE**

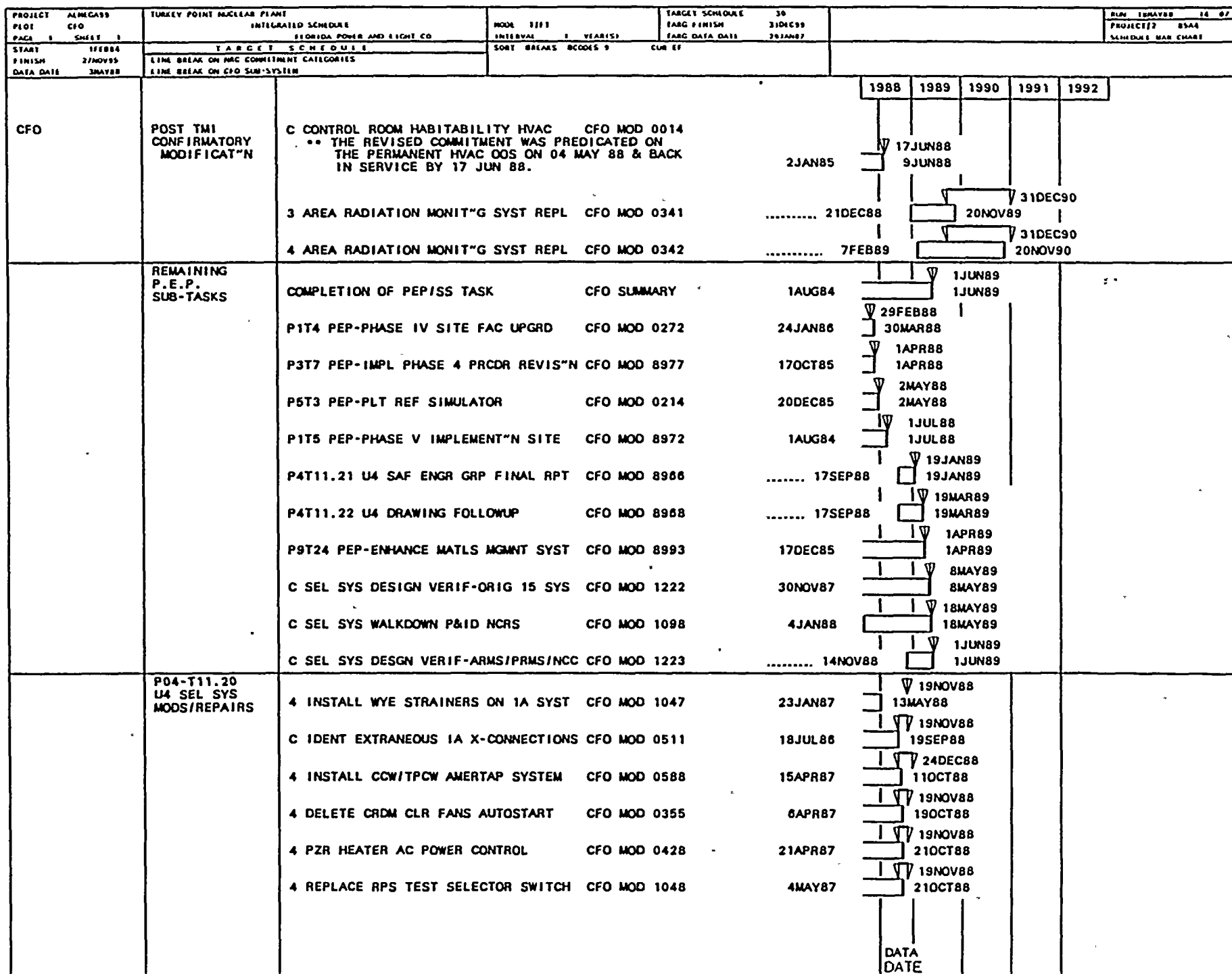
*FLORIDA POWER  
AND  
LIGHT COMPANY*

***INTEGRATED SCHEDULE***

*TURKEY POINT  
NUCLEAR POWER PLANT*

*REGULATORY REPORT  
MAY 1988*

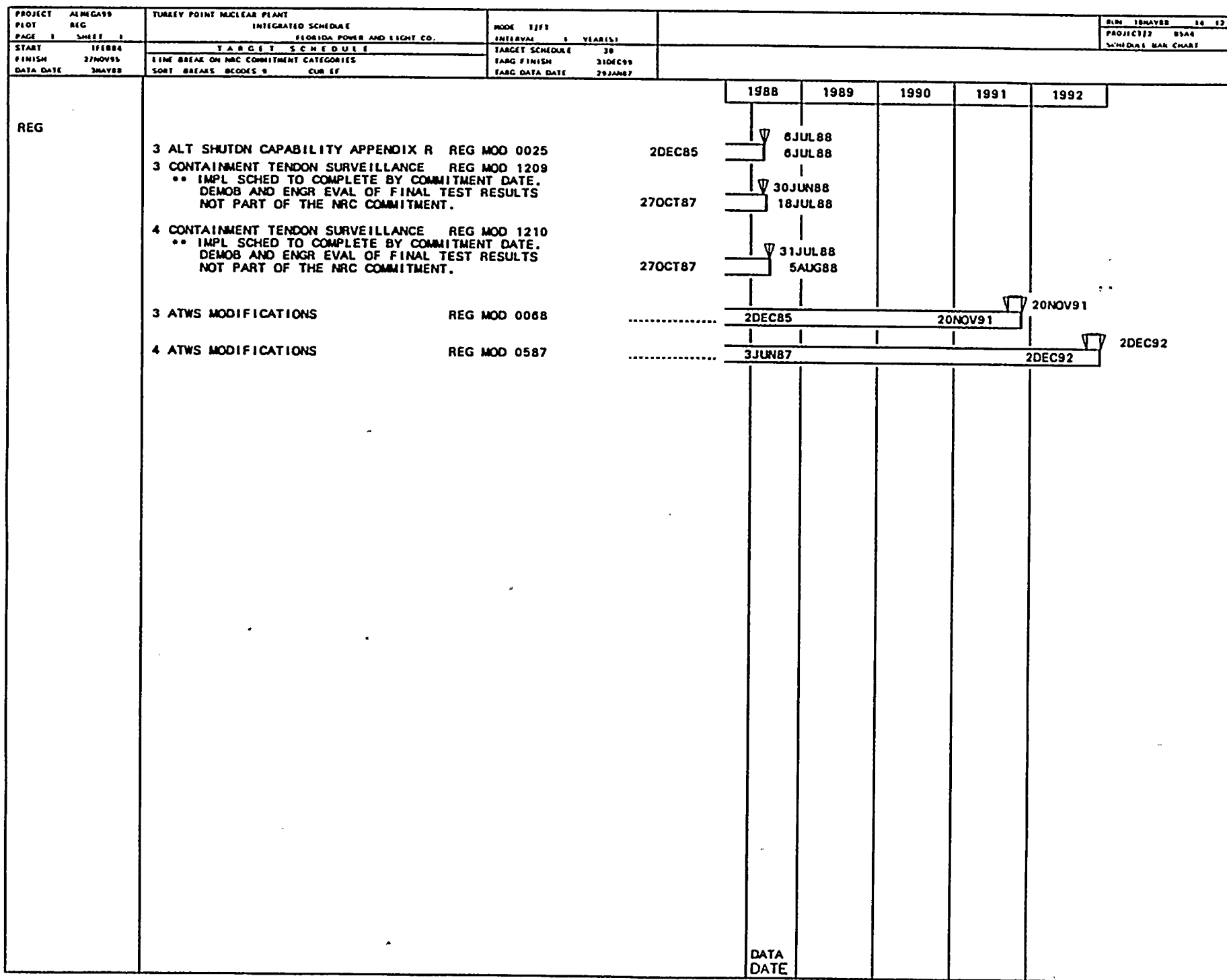




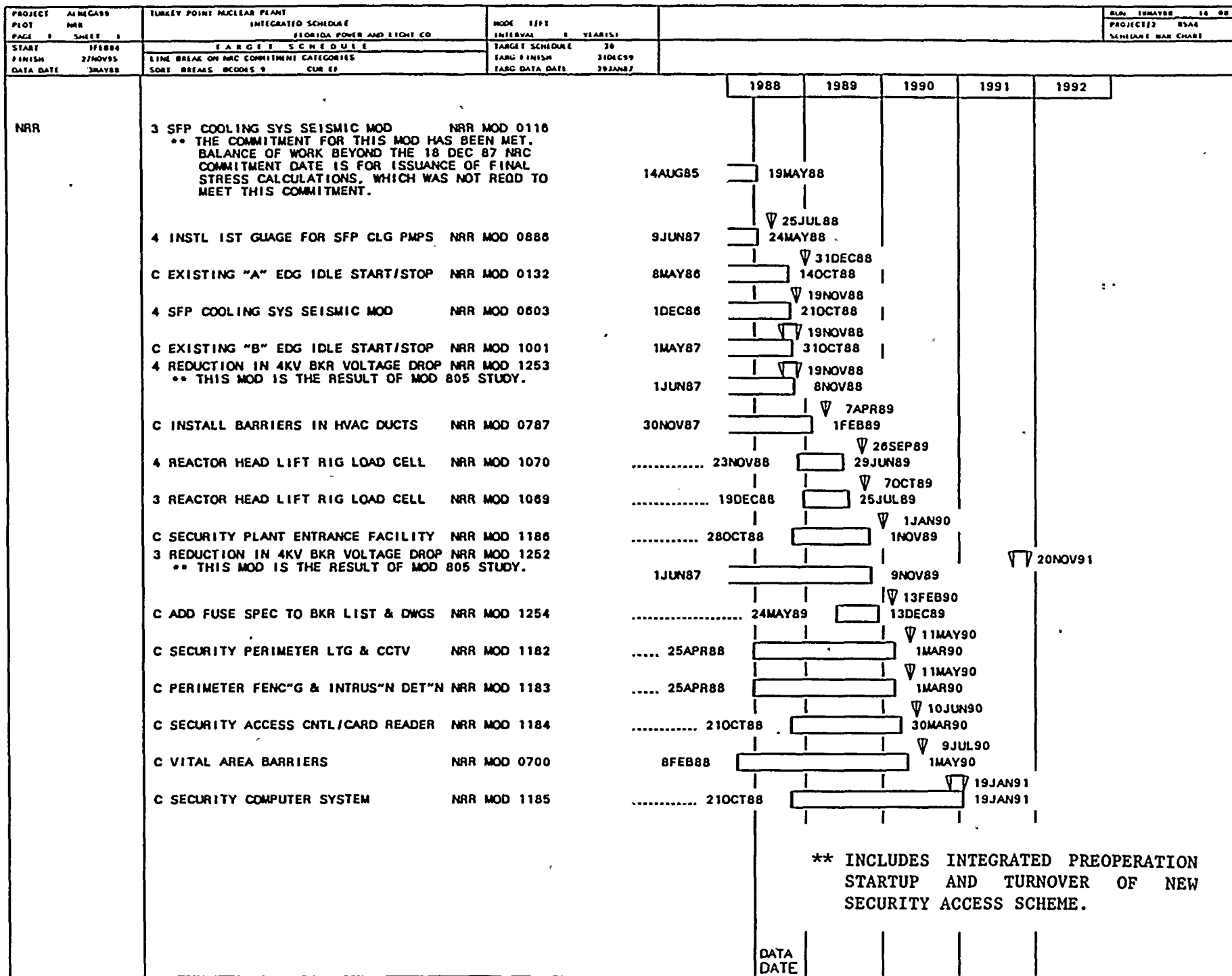
NOTES: ▼ INDICATES NON-OUTAGE N.R.C. COMMITMENT DATE  
 ▢ INDICATES OUTAGE RELATED N.R.C. COMMITMENT DATE

PROJECT ALMEGA99 CFO	TURKEY POINT NUCLEAR PLANT INTEGRATED SCHEDULE FLORIDA POWER AND LIGHT CO	MODE 1/7/7 INTERVAL 1 YEAR(S)	TARGET SCHEDULE TARG FINISH 31DEC99 TARG DATA DATE 29JAN97	MIN 18MAY88 PROJECT 2 8548 SCHEDULE BAR CHART
PAGE 1 SHEET 2	TARGET SCHEDULE	SORT BREAKS CODES 9	CUR EF	
START 17FEB88 FINISH 27NOV95 DATA DATE 2MAY88	LINE BREAK ON NRC COMMITMENT CATEGORIES LINE BREAK ON CFO SUB SYSTEM			
CFO	P04-T11.20 U4 SEL SYS MODS/REPAIRS	4 S.I. MINI RECIRC. VALVE REPLACE CFO MOD 0385 C EDG AIR START MOTORS UPGRADE CFO MOD 0576 4 MSIV AIR OPERATOR BACKUP N2 SYST CFO MOD 0268 4 RHR-INSTL UPGRADED 10" GLOBE VLV CFO MOD 0565	21MAR88 18JUL88 19SEP88 5FEB88	1988 1989 1990 1991 1992
	POST PEP	3 INSTALL WYE STRAINERS ON 1A SYS CFO MOD 0513 C P&ID QC WKDWN(ARM PRM NCC) O/CTMT CFO MOD 1041 S ISSUE DRAFT DESIGN BASIS FOR ARMS CFO MOD 1037 S ISSUE DRAFT DESIGN BASIS FOR PRMS CFO MOD 1038 S ISSUE DRAFT DESIGN BASIS FOR NCC CFO MOD 1039 4 P&ID VERIF WD(ARM PRM NCC) I/CTMT CFO MOD 1040 4 SM PP WD-I/C FUNC~N-ARM PRM NCC CFO MOD 1043 C SM PP WD FNCT O/C(ARM PRM & NCC) CFO MOD 1044 3 RHR-INSTL UPGRADED 10" GLOBE VLV CFO MOD 0519 3 P&ID QC WKDWN(ARM PRM NCC) I/CTMT CFO MOD 1042 3 SM PP WD FNCT I/C (ARM PRM NCC) CFO MOD 1045	15APR88 .... 5MAY88 4APR88 4APR88 4APR88 ..... 23SEP88 ..... 23SEP88 ..... 22JUL88 ..... 1SEP88 ..... 18SEP89 ..... 25SEP89	19NOV88 13MAY88 8AUG88 31OCT88 9NOV88 9NOV88 9NOV88 19NOV88 18NOV88 19NOV88 18NOV88 28FEB89 28FEB89 20NOV89 27OCT89 20NOV89 20NOV89 20NOV89 20NOV89
				DATA DATE

NOTES: ▼ INDICATES NON-OUTAGE N.R.C. COMMITMENT DATE  
 ▮ INDICATES OUTAGE RELATED N.R.C. COMMITMENT DATE



NOTES: ▼ INDICATES NON-OUTAGE N.R.C. COMMITMENT DATE  
 ▮ INDICATES OUTAGE RELATED N R C COMMITMENT DATE



NOTES: ▼ INDICATES NON-OUTAGE N.R.C. COMMITMENT DATE  
 ▢ INDICATES OUTAGE RELATED N.R.C. COMMITMENT DATE

PROJECT PLOT PAGE 1 SHEET 1	ALMGA99 I&E	TURKEY POINT NUCLEAR PLANT INTEGRATED SCHEDULE FLORIDA POWER AND LIGHT CO.	MODE 1/1/1 INTERVAL 1 YEAR(S)	BIN 10MAY88 14 13 PROJECT# 85A8 SCHEDULE BAR CHART							
START FINISH DATA DATE	11FEB88 27NOV99 3MAY88	TARGET SCHEDULE LINE BREAK ON NRC COMMITMENT CATEGORIES 30A1 BREAKS BLOCKS 9 CUR 11	TARGET SCHEDULE TARG FINISH TARG DATA DATE	30 31DEC99 29JAN87							
					1988	1989	1990	1991	1992		
I&E  S TECHNICAL SPECIFICATION IMPLEMENT I&E MOD 0746  S PROC TP221 FOR O&M OF STA BATTERY I&E MOD 0803  S REV FSAR TO INCL GOULDS GNB BATT I&E MOD 0804  C CABLE TRAY MODIFICATIONS I&E MOD 0011  S 125V DC POWER PARTIAL LOSS I&E MOD 0647  S EVAL CURRENT OPER OF CCW PUMPS I&E MOD 0811  S 3C CCW PUMP SHAFT SEAL LEAKAGE I&E MOD 0812  S MSI VERIFY STROKE LENGTH I&E MOD 0837  S MSI REVISE MAINTENANCE PROCEDURES I&E MOD 0839  S EVALUATE EDG EQUIPMENT MOOS I&E MOD 0710  4 STUD & BOLT THREAD ENGAGEMENT I&E MOD 0999  S REV T. SPEC TO CNTMT ISOL VLV I&E MOD 0826  S PENETR #18 ELIM ONE VALVE AS CIV I&E MOD 0829  S PENETR 27 ADD RV-6223&SGWL AS CIV I&E MOD 0830  S PENETR 24 CK VLV VS. ISI PROGRAM I&E MOD 0831  S PENETR #30 CV-6165 REQ INSTR AIR I&E MOD 0832  S RHR TECH SPEC REVISIONS I&E MOD 0819  S TEMP SETPOINT FOR H2 ANALYZER I&E MOD 0833  S CLOSEOUT IE INFO NOTICE 84-68 I&E MOD 0398  S LK RATE SPEC-ELEC PENET RCP 4160V I&E MOD 0834  S ECF DRAIN LOOP SEALS EVAPORATION I&E MOD 0801					2JAN87	▽ 8MAR88 6JAN88 ▽ 14JUN88 □ 17MAR88 ▽ 8MAY88 □ 17MAR88   ▽ 30OCT88 □ 21MAR88   ▽ 2DEC88 □ 21MAR88 ▽ 8MAY88 □ 21MAR88 ▽ 22MAY88 □ 21MAR88   ▽ 11JUN88 □ 21MAR88   ▽ 15JUL88 □ 21MAR88   ▽ 5NOV88 □ 1APR88   ▽ 28OCT88 □ 4MAY88 ▽ 6JUL88 □ 5MAY88 ▽ 18JUL88 □ 6MAY88 ▽ 6JUL88 □ 6MAY88 ▽ 6JUL88 □ 6MAY88 ▽ 6JUL88 □ 6MAY88 ▽ 9JUL88 □ 9MAY88 ▽ 10JUL88 □ 10MAY88 ▽ 18JUL88 □ 16MAY88 ▽ 27JUL88 □ 27MAY88 ▽ 31JUL88 □ 31MAY88					
					7JAN88						
					28JAN88						
					7JAN85						
					1DEC86						
					1FEB88						
					18JAN88						
					11JAN88						
					23NOV87						
					8DEC87						
					14JUL87						
					9MAR88						
					2MAR87						
					2MAR87						
					2MAR87						
					2MAR87						
					9MAR88						
					9MAR88						
					5JAN87						
					9MAR88						
					9MAR88						
					DATA DATE						

NOTES: ▼ INDICATES NON-OUTAGE N.R.C. COMMITMENT DATE  
 ▢ INDICATES OUTAGE RELATED N.R.C. COMMITMENT DATE

4. 1. 1

10

1000

1

100

100

1

1

1

1

1

1

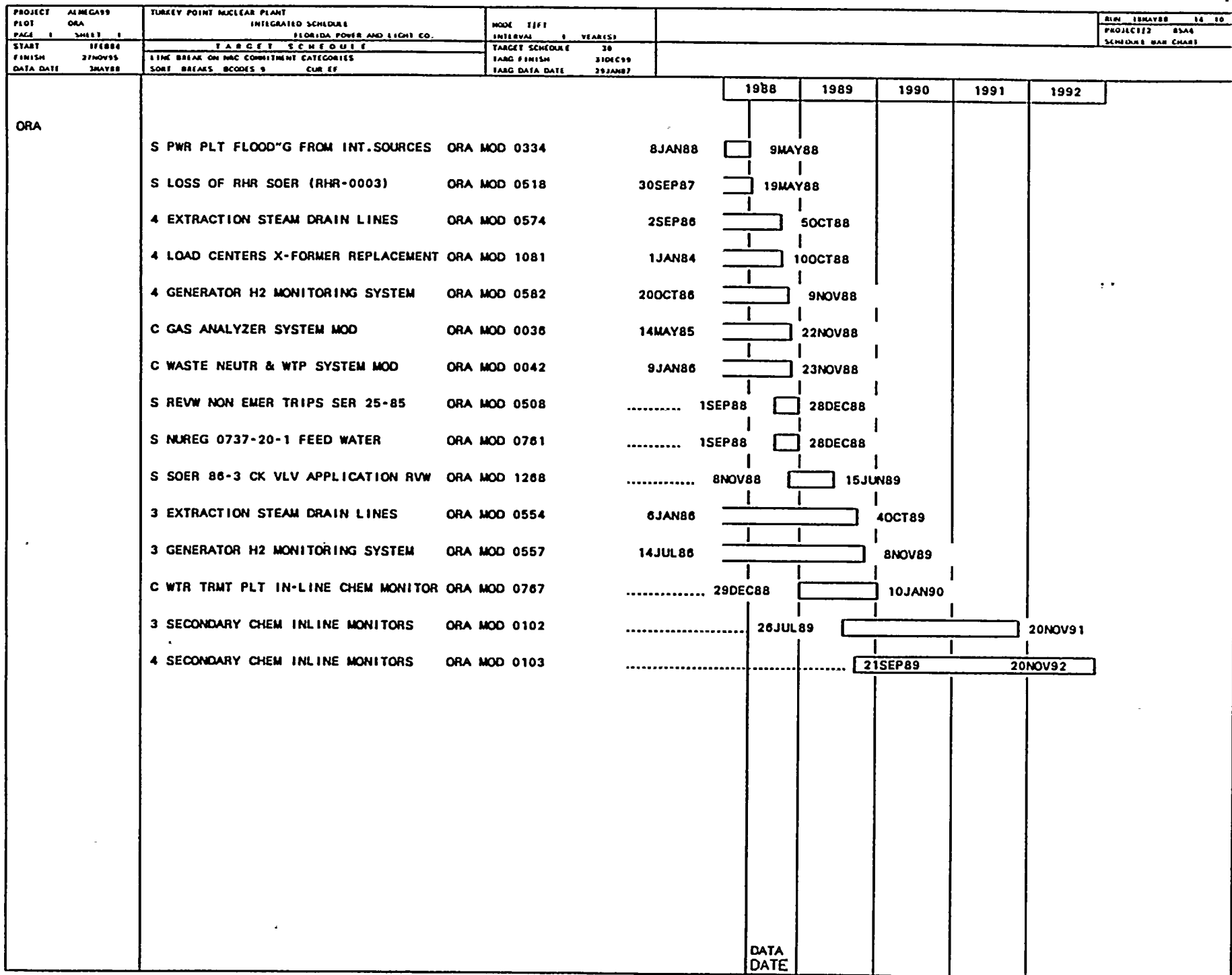
1

1

1

1







PROJECT FPL	ALNEGAS9 FPL	TURKEY POINT NUCLEAR PLANT INTEGRATED SCHEDULE FLORIDA POWER AND LIGHT CO.	MODE INTERVAL	TIME 0	YEARS	DATE 15MAY88	08	15
PAGE 1	SHEET 1	TARGET SCHEDULE	TARGET SCHEDULE	30		PROJECT 8544		
START 15FEB84		LINE BREAK ON MAC COMMITMENT CATEGORIES	TARGET FINISH	31DEC99		SCHEDULE BAR CHART		
FINISH 27NOV95		SORT BREAKS BCODES 9	TARG DATA DATE	29JAN87				
DATA DATE 3MAY88		CUR 11						
						1988	1989	1990
								1991
								1992
FPL								
S EDG PARALLELING OFF-SITE POWER FPL MOD 0472						15JAN88	25MAR88	
S REM BAT RM CHILLERS FOR EDG LDS FPL MOD 0929						22DEC87	1APR88	
S ADD OP GUIDANCE TO EDG INST METER FPL MOD 0931						18JAN88	1APR88	
S REV OPS & ELIM UNNEC ACCT CRIT FPL MOD 0932						12JAN88	1APR88	
C REPLACE ICW PUMP MOTOR COUPLINGS FPL MOD 0905						15APR87	4APR88	
S ACCEPTABILITY OF DC EQUIP RATINGS FPL MOD 0404						11JAN88	21APR88	
3 REPLACE LOW PRESSURE ROTORS FPL MOD 0066						31OCT84	2MAY88	
S TECH SPEC TEST REQUIREMENT FPL MOD 0800						25JAN88	2MAY88	
S INSTR AIR REGULATOR DRAIN LINES FPL MOD 0913						21JAN88	2MAY88	
S REVISE IA SYSTEMS DESCRIPTIONS FPL MOD 0920						11JAN88	2MAY88	
S PWR SOURCE TO WIDE RNG RAD MONTR FPL MOD 0551						22DEC86	3MAY88	
S STA BATT OPER & ACCEPT CRITERIA FPL MOD 0806						30JAN87	3MAY88	
3 MSR MODERNIZATION REPLACEMENT FPL MOD 0050						2DEC85	10MAY88	
4 REPAIR INTAKE STRUCTURE EQUIPT FPL MOD 0062						18FEB86	16MAY88	
C REMAINING SITE PREP WORK FPL MOD 1090						19NOV87	16MAY88	
C HALON SUPPRESSION SYSTEM FPL MOD 0279						17DEC85	23MAY88	
S CONTROL RM EMERGENCY LIGHTING FPL MOD 0491						11APR86	31MAY88	
3 FIX LEAKING VALVE MOV-3-832 FPL MOD 0492						22AUG86	8JUN88	
C INSTALL NUCLEAR DATA ACCOUNTG SYS FPL MOD 0229						1MAY84	9JUN88	
3 REM NMC RAD AIR MON/CNTRL ROOM FPL MOD 0350						17DEC85	9JUN88	
S EVAL LEAKING CTMT ISOLATION VLVS FPL MOD 0597						18JUL86	28JUN88	
						DATA DATE		

PROJECT FPL		TUMBLE POINT NUCLEAR PLANT INTEGRATED SCHEDULE FLORIDA POWER AND LIGHT CO		MODE LIFE INTERVAL 1 YEAR(S)		BLN 18MAY88 04 15 PROJECT 122 BSA4 SCHEDULE 1 BAR CHART	
PAGE 1	SHEET 2	TARGET SCHEDULE		TARGET SCHEDULE 30			
START 17FEB86	FINISH 27NOV85	LINE BREAK ON NRC COMMITMENT CATEGORIES		TARGET FINISH 31OCT89			
DATA DATE 3MAY88		SORT BREAKS BCODES 9 CUR EF		TARGET DATA DATE 20JAN87			
				1988	1989	1990	1991
FPL	S IDENT 125V/VITAL INSTR BUS MODS FPL MOD 0488	15JUL86		30JUN88			
	C ADD"L EMERG LIGHTING FOR APP. R FPL MOD 0592	12JUN86		1JUL88			
	3 MOV FAIL DUE TO IMPROPER SW SET'G FPL MOD 0528						
	** BALANCE OF MOD IS NOT I&E.CATEGORY CHANGED						
	TO FPL AFTER ORIGINAL COMMITMENT COMPLETED.	10APR86		5JUL88			
	3 MSR INSTRUMENTATION FPL MOD 1010	26JUN87		6JUL88			
	4 480V LOAD CENTER COOLING FACILITY FPL MOD 0085	11FEB85		19JUL88			
	S STA BATT LD TST REQ-PROP T. SPEC FPL MOD 0809						
	** BALANCE OF WORK IS NOT PART OF I&E COMMIT-						
	MENT. COMMITMENT MET PER JPE-86-1474.	10APR87		20JUL88			
	S REVIEW WEJ-IT EXPANSION ANCHORS FPL MOD 0586	4MAY87		27JUL88			
	C WHOLE BODY COUNTR PERMANENT INSTL FPL MOD 0677	28JUL87		3AUG88			
	3 INSTALL CCW/TPCW AMERTAP SYSTEM FPL MOD 0531						
	** BALANCE OF MOD IS NOT COFO.TPCW WORK TO GO.	15MAY86		12AUG88			
	C ON-GOING DES BAS ENH-ORIG 15 SYS FPL MOD 1224	18DEC87		15AUG88			
	S EVAL DES.BASIS ACCIDENT HT LD REM FPL MOD 0856	10NOV87		19AUG88			
	S BOUNDARIES FOR VISUAL LEAK INSP FPL MOD 0396	16JAN87		23AUG88			
	3 DEL LEAD/LAG MODULE LOW PZR LOOPS FPL MOD 1003	1JUL87		29AUG88			
	4 DEL LEAD/LAG MODULE/LOW PZR LOOPS FPL MOD 1004	1JUL87		29AUG88			
	C CONTROL BLDG ROOF HANDRAIL INSTL FPL MOD 0703	30OCT87		1SEP88			
	4 PERM SFP LEVEL MEASURING SCALE FPL MOD 1132	15MAR88		1SEP88			
	C BREATHING AIR COMPR WTR SOFTENER FPL MOD 0561	13JAN86		13SEP88			
	4 GEN DISCONN LINK INSPN WINDOWS FPL MOD 1167	1JAN84		20SEP88			
	4 RX CAVITY SEAL RING LAYDOWN FPL MOD 1212	1JAN84		22SEP88			
	C BREATHING AIR COMPRESSOR FPL MOD 0087	20JAN86		26SEP88			
				DATA DATE			

100

100

100

100

100

100

100

100

100

100

100

PROJECT PLOT PAGE 1 SHEET 3		ALMEGAS9 FPL		TURKEY POINT NUCLEAR PLANT INTEGRATED SCHEDULE FLORIDA POWER AND LIGHT CO.		MODE T/F/T INTERVAL 1 YEAR(S)		DATE 10MAY88 10 15 PROJECT 2 85A6 SCHEDULE BAR CHART		
START 11FEB86 FINISH 27NOV85 DATA DATE 3MAY88		T A R G E T S C H E D U L E LINE BREAK ON NRC COMMITMENT CATEGORIES SORT BREAKS BECOMES 9 CUR 6F		TARGET SCHEDULE 30 TARG FINISH 31DEC99 TARG DATA DATE 28JAN87						
						1988	1989	1990	1991	1992
FPL										
4 OPEN & CLOSE 1A PPG FOR QC INSP FPL MOD 1093				25SEP86			26SEP88			
3 480V LOAD CENTER COOLING FACILITY FPL MOD 0086				10JAN86			27SEP88			
C W.T.P. FLOW METERS UPGRADE FPL MOD 0151				11FEB86			27SEP88			
4 G.E. PK-2 TEST BLOCKS FPL MOD 0577 ** NO BASIS FOR I&E COMMITMENT - CATEGORY CHANGED TO FPL ON 2/10/88.				30JAN86			28SEP88			
4 CRDM DUCTWORK QUICK DISCONN CLAMP FPL MOD 1229				1JAN84			28SEP88			
4 BACKUP INSTR. AIR COMPRESSOR FPL MOD 0291				4APR86			29SEP88			
3 METERING X-DUCERS FOR WATT & VARS FPL MOD 0663				7MAR86			30OCT88			
4 REPLACE FARRIS RELIEF VALVES/CCW FPL MOD 0415				2SEP86			40OCT88			
4 REPLACE VELAN CHECK VALVE DISK FPL MOD 0420				19MAY87			50OCT88			
4 ADD & RELOCATE AFW N2 SUPPLY FPL MOD 0216				2DEC85			70OCT88			
C CABLE SPREAD ROOM DRAINS FPL MOD 0392				12JAN87			70OCT88			
4 REPLACE BASKET STRAINER CCW 4B FPL MOD 0274				14JUL87			100OCT88			
4 MAIN STM SAFETY LIFTING LEVERS FPL MOD 0423				22DEC86			100OCT88			
C FIRE PUMP DIESEL ENGINE UPGRADE FPL MOD 0191				..... 4MAY88			110OCT88			
4 INST FLGS ON RCP SEAL LINES FPL MOD 0479				22DEC86			120OCT88			
4 MODIFICATION TO #4 GAS STRIPPER FPL MOD 1013				1JAN84			130OCT88			
4 REPL CNTMT DOME LIGHTS U-4 FPL MOD 0693				1JAN84			140OCT88			
C HYDROGEN LINE MODIFICATION FPL MOD 0077				2DEC85			150OCT88			
4 ENHANCED RCP OIL COLL SYS FPL MOD 0713				18NOV86			150OCT88			
4 REPL. BASKET STRAINER TPCW 4A & B FPL MOD 0277				14JUL87			170OCT88			
C AFW PUMPS-GOVRNR VLV STEM GUARDS FPL MOD 1105				9JAN87			170OCT88			
						DATA DATE				

PROJECT ALMEGA99 FPL		TURKEY POINT NUCLEAR PLANT INTEGRATED SCHEDULE FLORIDA POWER AND LIGHT CO.		MOD 1/1/1 INTERVAL 1 YEAR(1)		BPM 10MAY88 14 15 PROJECT 2 8544 SCHEDULE BAR CHART				
PALE 1 SHEET 4		T A R G E T S C H E D U L E		T A R G E T S C H E D U L E						
START 17FEB84		LINE BREAK ON NRC COMMITMENT CATEGORIES		TARG FINISH						
FINISH 27NOV85		SORT BREAKS BCODES 9 CUR EF		TARG DATA DATE						
DATA DATE 3MAY88										



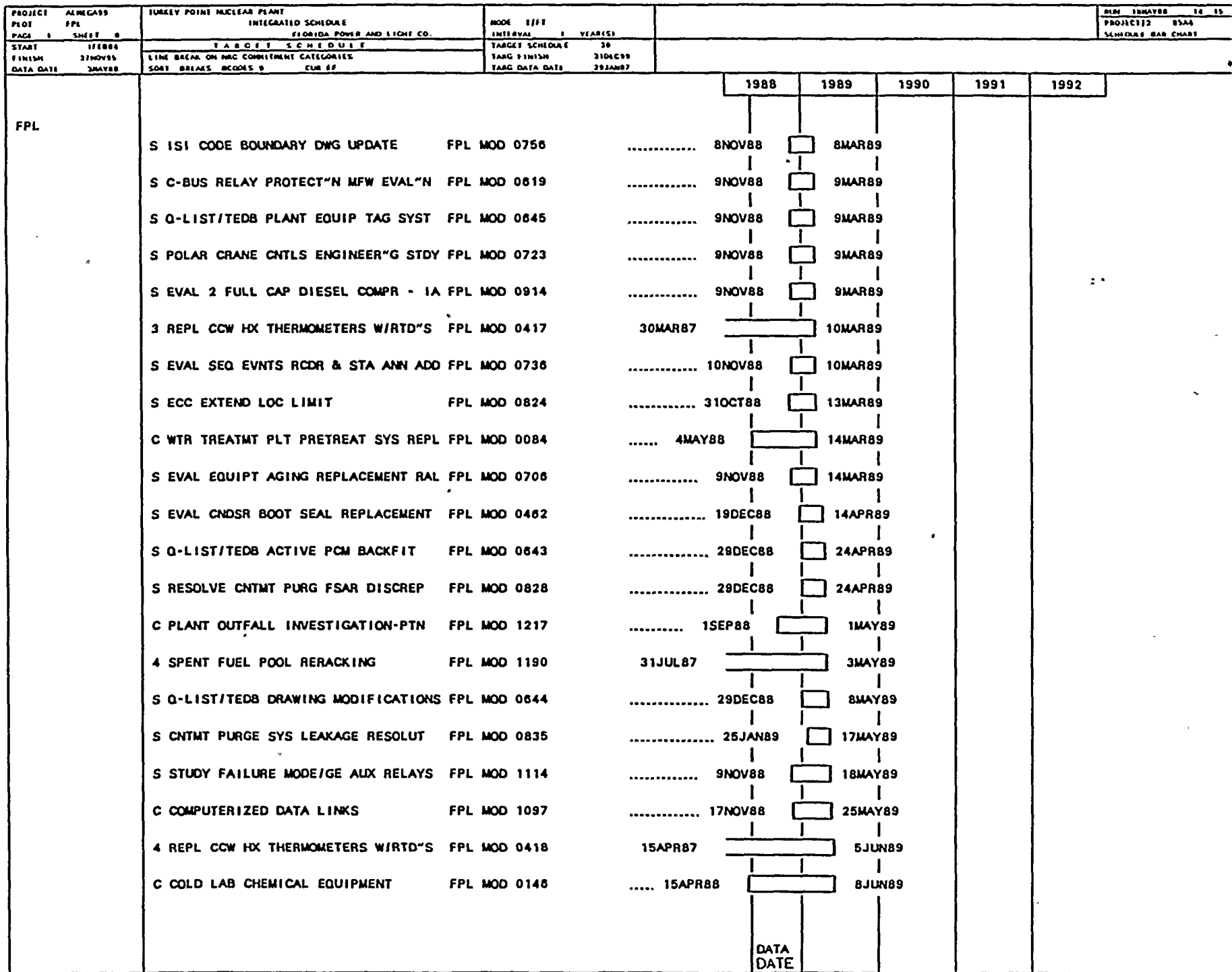
PROJECT P101	ALMEGASS FPL	TURKEY POINT NUCLEAR PLANT INTEGRATED SCHEDULE FLORIDA POWER AND LIGHT CO.	MODE F1/F2 INTERVAL 5 YEAR(S)	RLN 18MAY88 14 15 PROJECT/2 8544 SCHEDULE BAR CHART			
PAGE 1	SHEET 5	T A R G E T S C H E D U L E	TARGET SCHEDULE 30 TARG FINISH 31DEC89 TARG DATA DATE 29JAN87				
START 17FEB84		LINE BREAK ON NBC COMMITMENT CATEGORIES					
FINISH 27NOV85		SHORT BREAKS BCODES 9 CUR EF					
DATA DATE 3MAY88							
			1988	1989	1990	1991	1992
FPL	3 ADD & RELOCATE AFW N2 SUPPLY FPL MOD 0215 ** BALANCE OF MOD WORK BEYOND THE COMMITMENT DATE OF 28 JAN 88 IS NOT COFO. REPLACE REPLACE RUPTURE DISCS WITH RELIEF VALVES.	2DEC85		4NOV88			
	4 INSP/REPR EQ RAYCHEM SPLICES/O&M FPL MOD 0748	11MAR87		5NOV88			
	4 SGWL CNTMT ISOL. VLV REPLACEMENT FPL MOD 0257	4MAR86		7NOV88			
	3 MSIV AIR OPERATOR BACKUP N2 SYST FPL MOD 0267 ** BALANCE OF MOD IS NOT COFO. CHANGES ARE PER FPL.	2DEC85		15NOV88			
	4 CRDM MTR GEN SET VBRTN MONTRG SYS FPL MOD 0093	22NOV85		16NOV88			
	S LIMITING CONDITION CVT OPERATION FPL MOD 0344	29DEC86		16NOV88			
	4 REACTOR CAVITY SEAL RING FPL MOD 1073	4AUG87		17NOV88			
	4 REPLACE LOW PRESSURE ROTORS FPL MOD 0067	31OCT84		21NOV88			
	3 CHARG PUMP SUCTN QUICK DISCONNECT FPL MOD 0431	22DEC86		21NOV88			
	4 SFP AIR INLET DAMPER REPLACEMENT FPL MOD 0353	4MAY87		7DEC88			
	4 HEATER DRAIN TANK SAMPLE SYSTEM FPL MOD 1050	9OCT87		8DEC88			
	4 INST. CTMT SUMP LVL. PNEU.INDIC. FPL MOD 0652	1JAN84		13DEC88			
	4 TURB LUBE OIL BOWSER LVL CNTRL FPL MOD 0778	..... 4MAY88		16DEC88			
	C UPGRADE PH MONITORING SYS AT WWTF FPL MOD 0413	7MAY86		20DEC88			
	S CB/FUSE IMPACT ON VDC PANELS FPL MOD 0533	..... 1SEP88		28DEC88			
	S AFW PUMP TURBINE LUBE OIL SETPTS. FPL MOD 0544	..... 1SEP88		28DEC88			
	S PRA ADVISABILITY STUDY FPL MOD 0672	..... 1SEP88		28DEC88			
	S FLAG 1 LINE BKUP RELAY PROT ADDN FPL MOD 0726	..... 1SEP88		28DEC88			
	S SIU MTR DISC SW/INT-LCK A CTL REM FPL MOD 0741	..... 1SEP88		28DEC88			
	S SYNC CK RECLOSE&SUPV BRK CNTRL ADD FPL MOD 0742	..... 1SEP88		28DEC88			
			DATA DATE				

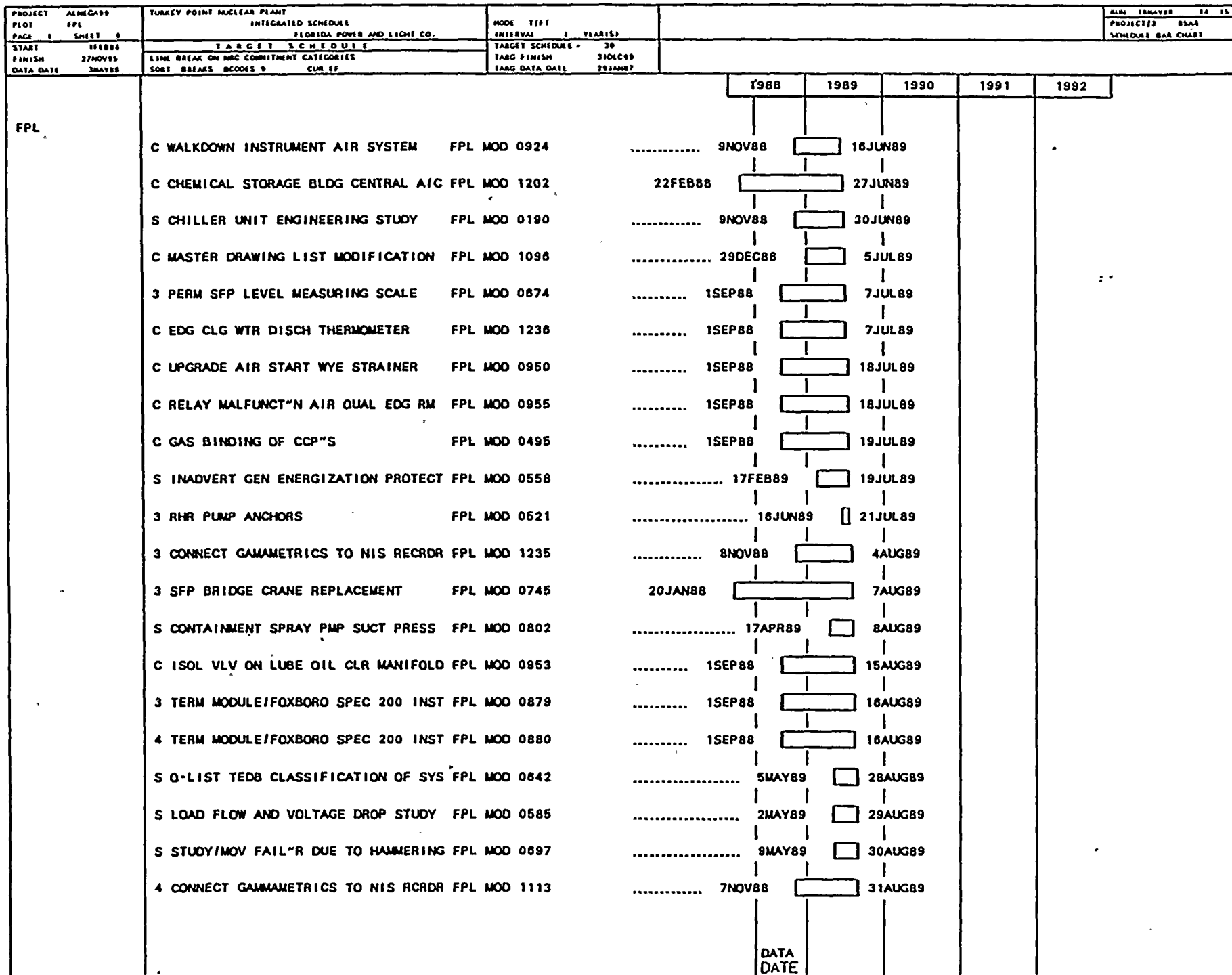




PROJECT ALMEGA99	TURKEY POINT NUCLEAR PLANT INTEGRATED SCHEDULE FLORIDA POWER AND LIGHT CO	MODE T/FT						RUN 18MAY88 14 15
PLOT FPL		INTERVAL 1 YEAR(S)						PROJECT# 85A4
PAGE 1 SHEET 6	T A R G E T S C H E D U L E	TARGET SCHEDULE 30						SCHEDULE BAR CHART
START 17FEB84	LINE BREAK ON MRC COMMITMENT CATEGORIES	TARG FINISH 31DEC99						
FINISH 27NOV95	SORT BREAKS BCODES 9 CUR EF	TARG DATA DATE 28JAN87						
DATA DATE 3MAY88				1988	1989	1990	1991	1992
FPL	S POST TMI SOURCE TERMS EVALUATION FPL MOD 0799	..... 1SEP88	<input type="checkbox"/>	28DEC88				
	S RHR MOV 744 A & B FPL MOD 0822	..... 1SEP88	<input type="checkbox"/>	28DEC88				
	S LONG TERM ECC FAN TEST FPL MOD 0823	..... 1SEP88	<input type="checkbox"/>	28DEC88				
	S OPERABILITY REQMTS ECCS EQUIP FPL MOD 0844	..... 1SEP88	<input type="checkbox"/>	28DEC88				
	S EVAL CCW HX BSKT STRNR NOZZLE LDS FPL MOD 0908	..... 1SEP88	<input type="checkbox"/>	28DEC88				
	S AMEND FSAR/ICW MAX INLT TEMP FPL MOD 0909	..... 1SEP88	<input type="checkbox"/>	28DEC88				
	S TPCW WALKDOWN & LOAD STUDY FPL MOD 0910	..... 1SEP88	<input type="checkbox"/>	28DEC88				
	S FEASIBILITY STDY CAB REARR FOR 1A FPL MOD 0912	..... 1SEP88	<input type="checkbox"/>	28DEC88				
	S EVAL 2 FULL CAP DIESEL GEN FOR 1A FPL MOD 0915	..... 1SEP88	<input type="checkbox"/>	28DEC88				
	S 1A/EVAL SFTY FUNCT'NS EFFECTED EQ FPL MOD 0917	..... 1SEP88	<input type="checkbox"/>	28DEC88				
	S 1A/REGULATOR ID NUMBER FPL MOD 0918	..... 1SEP88	<input type="checkbox"/>	28DEC88				
	S REVIEW COMPRESSOR SERVICE LIFE FPL MOD 0919	..... 1SEP88	<input type="checkbox"/>	28DEC88				
	S REVISE FSAR ON INSTRUMENT AIR FPL MOD 0921	..... 1SEP88	<input type="checkbox"/>	28DEC88				
	S REVIEW COMPRESSOR LOADING FOR 1A FPL MOD 0922	..... 1SEP88	<input type="checkbox"/>	28DEC88				
	S FSAR8.2-18A/INCRP AIR REG SET PT FPL MOD 0927	..... 1SEP88	<input type="checkbox"/>	28DEC88				
	S PROV ACCEPT CRIT FOR OIL XFR PMPS FPL MOD 0928	..... 1SEP88	<input type="checkbox"/>	28DEC88				
	S INC AMB TEMP EFF/CLG SYS ACC CRIT FPL MOD 0930	..... 1SEP88	<input type="checkbox"/>	28DEC88				
	S EVAL PROB RISK ASSMT STDY FOR EDG FPL MOD 0937	..... 1SEP88	<input type="checkbox"/>	28DEC88				
	S FUEL STORAGE, HOLG & WTR REMOVAL FPL MOD 0939	..... 1SEP88	<input type="checkbox"/>	28DEC88				
	S ADD PRESSURE GAUGES TO PENETS FPL MOD 0946	..... 1SEP88	<input type="checkbox"/>	28DEC88				
	S EVAL NEW CONN FOR TESTING PENET FPL MOD 0947	..... 1SEP88	<input type="checkbox"/>	28DEC88				
			DATA DATE					

PROJECT A1MEGAS9 FPL		TURKEY POINT NUCLEAR PLANT INTEGRATED SCHEDULE FLORIDA POWER AND LIGHT CO.		MODE 1/FT INTERVAL 1 YEAR(S)		RUN 18MAY88 18 15 PROJECT 72 85A4 SCHEDULE BAR CHART				
PAGE 1 SHEET 7		T A R G E T S C H E D U L E		TARGET SCHEDULE 30						
START 1FEB88 FINISH 27NOV88 DATA DATE 3MAY88		LINE BREAK ON MRC COMMITMENT CATEGORIES SORT BREAKS BCODES 9 CUR 55		TARG FINISH 31DEC89 TARG DATA DATE 29JAN87						
						1988	1989	1990	1991	1992
FPL	C MODIFY SI PUMP SPARE MOTOR FPL MOD 0126		23DEC86		29DEC88					
	S EVAL NEW VLVS FOR TESTING PENET FPL MOD 0945		..... 1SEP88		29DEC88					
	3 AFW FLOW TRANSMITTER REPLACEMENT FPL MOD 0250 ** PER RUSS GOULDY & DAVE DVORAK THERE WAS NO BASIS FOR THIS I&E COMMITMENT. REVISED COMMITMENT TO FPL PER THEIR DIRECTION.		3JUN86		30DEC88					
	3 POST ACCIDENT H2 MONITORS UPGRD FPL MOD 0363		12OCT87		4JAN89					
	4 POST ACCIDENT H2 MONITORS UPGRD FPL MOD 0364		15JAN88		4JAN89					
	S D.C. SWGR CRITERIA PER TS 3.7-8 FPL MOD 0528		..... 1SEP88		12JAN89					
	S ACCUMULATOR B PRESS XMTR REPL FPL MOD 0590		..... 1SEP88		20JAN89					
	3 "C" BUS SWGR ENCL A/C MOOS FPL MOD 0070		14OCT85		23JAN89					
	4 "C" BUS SWGR ENCL A/C MOOS FPL MOD 0071		3DEC85		23JAN89					
	3 BORIC ACID EVAP PMP UPGRADE FPL MOD 0237		12NOV85		23JAN89					
	S REV RM VNT&COMBS"N AIR INL CONCERN FPL MOD 0938		..... 1SEP88		24JAN89					
	S POTENTIAL FOR HIGH CTMT TEMP FPL MOD 0810		..... 1SEP88		3FEB89					
	S EVAL EDG EXCEEDING FREQ LIMIT FPL MOD 0454		..... 15DEC88		16FEB89					
	S ECCS HEAT SINK UPDATE FPL MOD 0362		6MAY87		17FEB89					
	4 SFP BRIDGE CRANE REPLACEMENT FPL MOD 0744		..... 11APR88		21FEB89					
	S FSAR START TIME DESCRP/DATA VERIF FPL MOD 0497		..... 1SEP88		27FEB89					
	S TECH SPEC REV GL-84-15 (EP-0017) FPL MOD 0498		..... 1SEP88		27FEB89					
	S ANNUNCIATOR SYS REPL STUDY FPL MOD 1011		..... 1SEP88		27FEB89					
	S METEOROLOGICAL SYSTEMS EVALUATION FPL MOD 1053		..... 1SEP88		27FEB89					
	C NEAR SITE LIGHTED HELI-PORT FPL MOD 0094		1JAN84		28FEB89					
	C "B" EDG STARTNG AIR TK PI ISO VLV FPL MOD 1165		..... 1SEP88		1MAR89					
						DATA DATE				





100

100

100

100

100

100

100

100

100

100

PROJECT ALMIGASS	TURKEY POINT NUCLEAR PLANT	MODE 1111	RUN 18MAY88 18 15		
PLOT FPL	INTEGRATED SCHEDULE	INTERVAL 1 YEAR(1)	PROJECT12 85A6		
PAGE 1 SMET 10	FLORIDA POWER AND LIGHT CO.		SCHEDULE BAR CHART		
START 1FEB84	TARGET SCHEDULE	TARGET SCHEDULE 30			
FINISH 27NOV85	LINE BREAK ON MRC COMMITMENT CATEGORIES	TARG FINISH 31DEC89			
DATA DATE 3MAY88	SORT BREAKS BECODES 0 CUR EF	TARG DATA DATE 29JAN87			
			1988	1989	1990
FPL	4 INSTALL SFP STORAGE BOXES FPL MOD 1060	..... 9NOV88		6SEP89	
	C NEW EDG BLDGS SECURITY SYSTEM FPL MOD 1177	18SEP87		11SEP89	
	C NEW EDG FIRE PROTECTION FPL MOD 1176	..... 4MAY88		14SEP89	
	C REL INV XFR LN TO CVT W/QSPDS PNL FPL MOD 0925	..... 9NOV88		15SEP89	
	3 NORMAL CNTMT COOLER AIR BAL & CTL FPL MOD 0892	..... 8NOV88		22SEP89	
	3 RX CAVITY SEAL RING LAYDOWN FPL MOD 1211	1JAN84		24SEP89	
	3 REACTOR CAVITY FILTER LEAD SHIELD FPL MOD 0236	1MAY84		26SEP89	
	3 BACKUP INSTR. AIR COMPRESSOR FPL MOD 0290	1APR86		26SEP89	
	C LIVE LOADING OF VALVE PACKING FPL MOD 1213 ** THIS IS A SAMPLE MOD FOR 15 VALVES ONLY.	..... 9NOV88		26SEP89	
	3 CRDM DUCTWORK QUICK DISCONN CLAMP FPL MOD 1228	1JAN84		28SEP89	
	3 REPLACE FARRIS RELIEF VALVES/CCW FPL MOD 0414	22DEC86		30OCT89	
	C WASTE GAS SYS UPGRADE PROGRAM FPL MOD 0768	..... 9NOV88		30OCT89	
	3 INSTALL SFP STORAGE BOXES FPL MOD 1058	..... 8NOV88		30OCT89	
	3 REPLACE VELAN CHECK VALVE DISK FPL MOD 0419	22DEC86		50OCT89	
	C NEW EDG BLDGS LTG FIRE COMM HVAC FPL MOD 1175	21MAY87		60OCT89	
	C SUCTION GUAGES FOR 1ST PUMPS FPL MOD 0136	..... 29DEC88		90OCT89	
	3 REPLACE REACTOR CAVITY LIGHT FPL MOD 0356	27DEC85		100OCT89	
	3 MAIN STM SAFETY LIFTING LEVERS FPL MOD 0422	17APR86		100OCT89	
	C EDG ENGINE CNTL PANEL MOOS FPL MOD 0450	..... 9NOV88		120OCT89	
	3 1ST GUAGE INSTLN FOR ICW PUMPS FPL MOD 0106	19MAR85		140OCT89	
	3 ENHANCED RCP OIL COLL SYS FPL MOD 0120	20MAY86		140OCT89	
			DATA DATE		

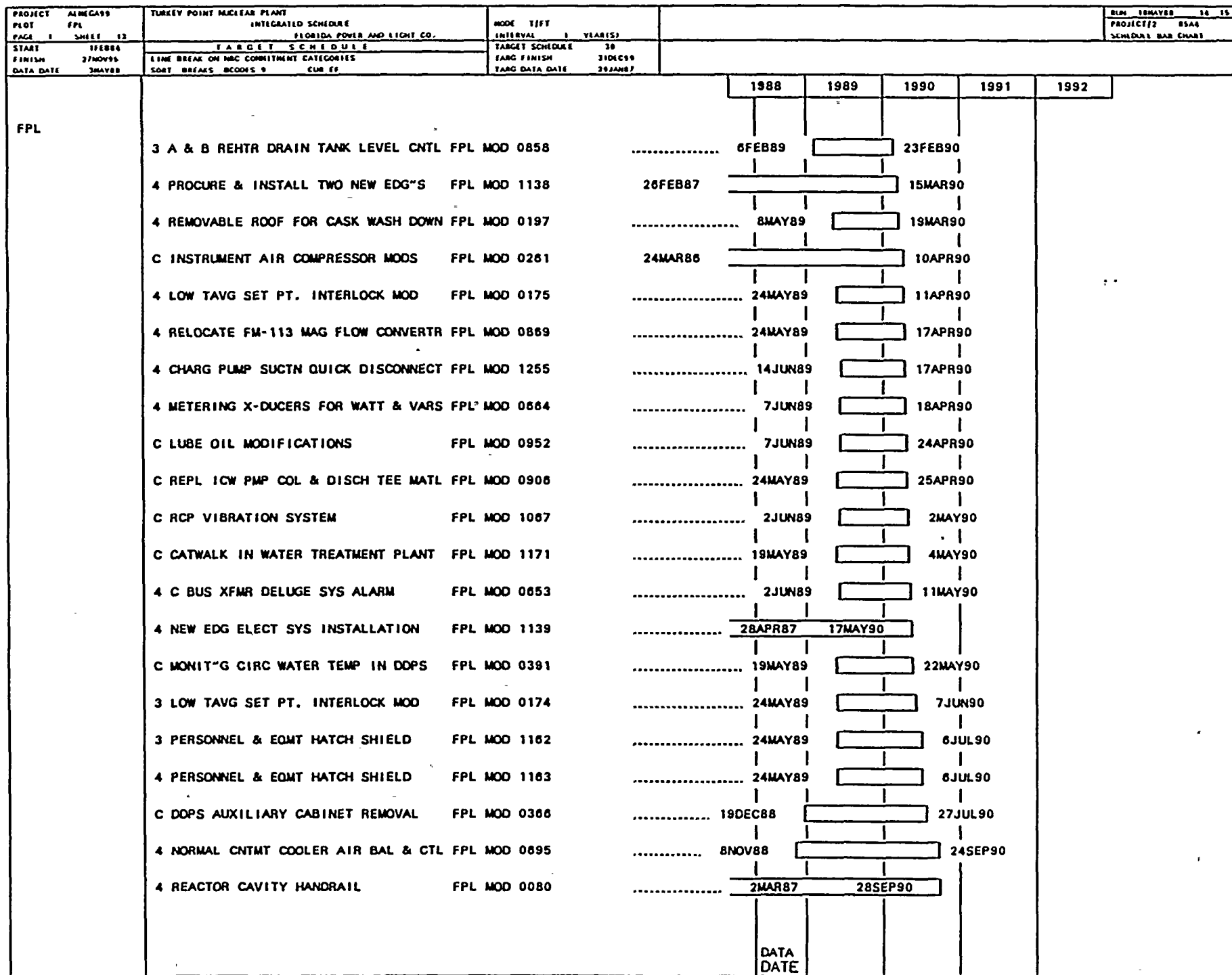
PROJECT	ALMCA99	TURKEY POINT NUCLEAR PLANT	MODE	1/1/1	BLN	18MAY88	10	15
FILE	FPL	INTEGRATED SCHEDULE	INTERVAL	1 YEAR(S)	PROJECT	2	85A4	
PAGE	8	FLORIDA POWER AND LIGHT CO.	TARGET SCHEDULE	30	SCHEDULE	BAR CHART		
START	1FEB84	LINE BREAK ON NRC COMMITMENT CATEGORIES	TARG FINISH	21DEC99				
FINISH	27NOV95	SHORT BREAKS BCODES 9 CUR EF	TARG DATA DATE	29JAN87				
DATA DATE	3MAY88							

		1988	1989	1990	1991	1992
FPL						
	3 MODIFICATION TO #3 GAS STRIPPER FPL MOD 0975	1JAN84		15OCT89		
	3 TURB RUNBACK SELECTOR SWITCH REPL FPL MOD 1245	1JAN84		17OCT89		
	3 INSPECT TURB PLT NSR PIPE SUPPRTS FPL MOD 0410	22DEC86		19OCT89		
	3 REPL. BASKET STRAINER TPCW 3A & B FPL MOD 0276	14JUL87		20OCT89		
	3 SGWL CNTMT ISOLAT^N VLV REPLACENT FPL MOD 0293	21MAR86		20OCT89		
	3 CNTRL SW FOR CV3722 & CV2913 FPL MOD 0387	1APR86		20OCT89		
	3 CRDM CLR FANS DAMPER POWER FPL MOD 0474	20MAR86		20OCT89		
	3 EVAL ACCUMULATOR N2 FILL LINE FPL MOD 0598	18JUL86		20OCT89		
	3 MAIN FEED CV 2011 CLOSING TIME FPL MOD 0662	9MAR88		20OCT89		
	3 HEATER DRAIN TANK SAMPLE SYSTEM FPL MOD 0072	26OCT87		25OCT89		
	3 RHR PUMPS SEAL UPGRADE FPL MOD 1172	31AUG87		26OCT89		
	3 CORROSION OF 480V AC MCC 3E FPL MOD 0793	..... 1SEP88		27OCT89		
	3 INSTL MANIPULATOR CRANE AIR COMPR FPL MOD 0852	19FEB87		27OCT89		
	3 CHARGING PUMP CHECK VALVE EVAL^N FPL MOD 1263	..... 18NOV88		27OCT89		
	3 INSTL MN LUBE OIL VAPOR EXTRACTOR FPL MOD 1250	1JAN84		29OCT89		
	3 CHARGING PUMPS VENTS FPL MOD 0776	..... 9NOV88		2NOV89		
	C INSTL LIFTING DEVICE/EDG CNTR LN FPL MOD 0951	..... 27DEC88		2NOV89		
	3 PERM FLOW INSTR - CCW LNS-RHR HX FPL MOD 0963	..... 19DEC88		3NOV89		
	C EDG DIESEL/D.O.S.T. BLDG CONST FPL MOD 1174	7AUG87		8NOV89		
	3 CRDM MTR GEN SET VBRN MONTRG SYS FPL MOD 0092	3JAN85		13NOV89		
	S ADD TO BREAKER LIST BKR TRIP SET FPL MOD 0618	..... 11MAY89		13NOV89		
		DATA DATE				

PROJECT AINCA99		TURKEY POINT NUCLEAR PLANT		MODE TITF		RIN 10MAY88 10 15	
PLOT FPL		INTEGRATED SCHEDULE		INTERVAL 1 YEAR(S)		PROJECT/2 05A4	
PAGE 1 SHEET 12		FLORIDA POWER AND LIGHT CO.				SCHEDULE BAR CHART	
START 15EB88		T A R G E T S C H E D U L E		TARGET SCHEDULE 30			
FINISH 27NOV88		LINE BREAK ON NRC COMMITMENT CATEGORIES		TARG FINISH 31DEC89			
DATA DATE 3MAY88		SHORT BREAKS MODELS 9 CUR EF		TARG DATA DATE 29JAN87			
				1988	1989	1990	1991
							1992
FPL	3 REACTOR CAVITY HANDRAIL	FPL MOD 0233	2MAR87			14NOV89	
	3 HIGH INITIAL RESPONSE EXCITER	FPL MOD 0978	22DEC88			15NOV89	
	3 NORMAL CTMT CLRS CNTRL SWITCHES	FPL MOD 0550	..... 29DEC88			30NOV89	
	4 NORMAL CTMT CLRS CNTRL SWITCHES	FPL MOD 0569	..... 29DEC88			30NOV89	
	C SF DEMIN BYPASS RWST RECIRC LINE	FPL MOD 0591	..... 9NOV88			30NOV89	
	3 C BUS XFMR DELUGE SYS ALARM	FPL MOD 0854	..... 2JUN89			4DEC89	
	S EVAL INDEPENDENT SERVICE AIR	FPL MOD 0916	..... 28JUL89			4DEC89	
	3 NEW EDG ELECT SYS INSTALLATION	FPL MOD 1142	15JUN87			5DEC89	
	3 SUPPLY BREATHING AIR/REGULATING VLV	FPL MOD 0560	..... 29DEC88			8DEC89	
	4 SUPPLY BREATHING AIR REGULATING VLV	FPL MOD 0575	..... 29DEC88			8DEC89	
	C WTR EQUIPT & HOTWELL SAMPLE SYST.	FPL MOD 0180	..... 6FEB89			18DEC89	
	C UNIT AUTONOMOUS P&ID DRAWINGS	FPL MOD 1094	1JUN87			29DEC89	
	C EDG PROJECT LICENSING SUBMITTALS	FPL MOD 1144	20JUL87			29DEC89	
	3 REMOVABLE ROOF FOR CASK WASH DOWN	FPL MOD 0198	..... 28FEB89			5JAN90	
	4 PERM SHIELDING IN CASK WASHDOWN	FPL MOD 0135	..... 23FEB89			16JAN90	
	3 PERM SHIELDING IN CASK WASHDOWN	FPL MOD 0134	..... 28FEB89			19JAN90	
	4 RHR PUMP ANCHORS	FPL MOD 0567	..... 14JUN89			22JAN90	
	C NO/HP SHELTER IN AUX BUILDING	FPL MOD 0378	..... 29DEC88			24JAN90	
	4 REM NMC RAD AIR MON/CNTRL ROOM	FPL MOD 0351	..... 28FEB89			6FEB90	
	3 SHIPPING CASK CLOSURE HEAD STAND	FPL MOD 0159	..... 24MAY89			20FEB90	
	4 A & B REHTR DRAIN TANK LEVEL CNTRL	FPL MOD 0857	..... 6FEB89			23FEB90	
				DATA DATE			



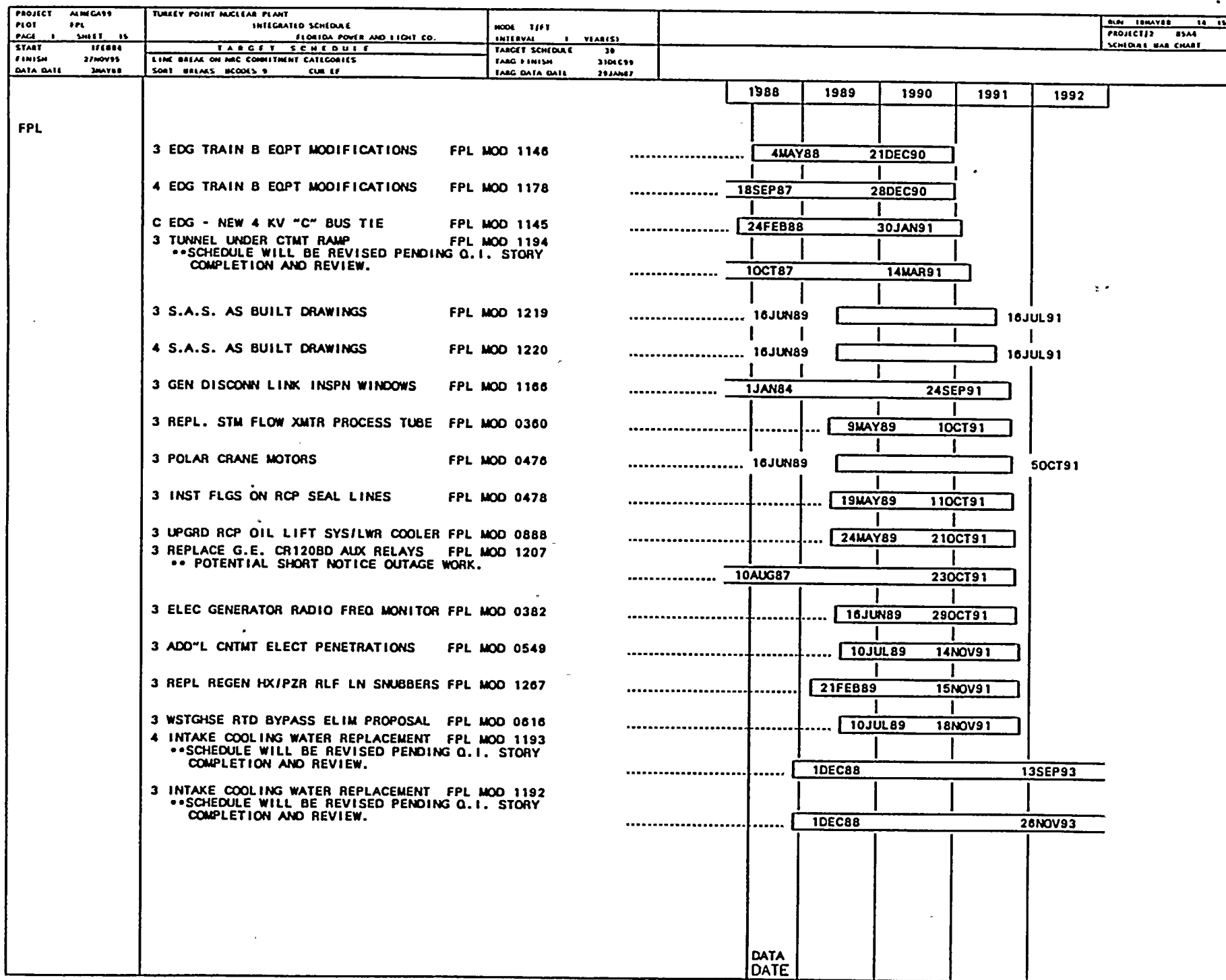


PROJECT FLOI	ALMEGA99 FPL	TURKEY POINT NUCLEAR PLANT INTEGRATED SCHEDULE	MOOD T/F/T	BLN 18MAY88 14 15
PAGE 1	SHEET 14	FLORIDA POWER AND LIGHT CO.	INTERVAL 1 YEAR(S)	PROJECT/2 8544
START 1/1/88		TARGET SCHEDULE	TARGET SCHEDULE 30	SCHEDULE BAR CHART
FINISH 27NOV95		LINE BREAK ON MCC COMMITMENT CATEGORIES	TARG FINISH 31DEC99	
DATA DATE 3MAY88		SORT BREAKS BCODES 9 CUR EF	TARG DATA DATE 29JAN87	

	1988	1989	1990	1991	1992
FPL					
4 REPL. STM FLOW XMTR PROCESS TUBE FPL MOD 0361	19MAY89		10CT90		
4 POLAR CRANE MOTORS FPL MOD 0477	16JUN89		50CT90		
4 SECONDARY PIPE WALL SIZE EVAL/RPR FPL MOD 0892	29DEC88		80CT90		
4 INSPECT TURB PLT NSR PIPE SUPPRTS FPL MOD 0411	10JUL89		180CT90		
4 4160 V SWGR CNTRL MOD - 14 DIODES FPL MOD 1244	8NOV88		180CT90		
4 UPGRD RCP OIL LIFT SYS/LOWR COOLR FPL MOD 1021	14JUN89		230CT90		
4 CORROSION OF 480V AC MCC 4E FPL MOD 0794	1SEP88		260CT90		
4 PERM FLOW INSTR - CCW LNS-RHR HX FPL MOD 0964	19DEC88		260CT90		
4 CHARGING PUMP CHECK VALVE EVAL"N FPL MOD 1264	18NOV88		260CT90		
4 CHARGING PUMP VENTS FPL MOD 1203	9NOV88		1NOV90		
3 TRANSFER CANAL LEAKAGE PERM FIX FPL MOD 0895	14JUN89		7NOV90		
4 ADD"L CNTMT ELECT PENETRATIONS FPL MOD 0766	10JUL89		14NOV90		
4 HIGH INITIAL RESPONSE EXCITER FPL MOD 0979	9FEB87	15NOV90			
4 WSTGHSE RTD BYPASS ELIM PROPOSAL FPL MOD 0617	10JUL89		16NOV90		
4 TURBINE BLADE RING EROSION FPL MOD 1237	16JUN89		20NOV90		
3 EDG TRAIN A EQPT MODIFICATIONS FPL MOD 1180	2DEC87	5DEC90			
4 RCP #2 SEAL LEAK-OFF INDICATOR FPL MOD 0017	21AUG88	11DEC90			
4 TRANSFER CANAL LEAKAGE PERM FIX FPL MOD 0886	16JUN89		12DEC90		
S UPGRADE U4 INSTR AIR SYSTEM STUDY FPL MOD 0461	24MAY89		20DEC90		
4 EDG TRAIN A EQPT MODIFICATIONS FPL MOD 1140	18SEP87	20DEC90			
4 EDG/REMOVAL OF UNIT 4 MCC "D" TIE FPL MOD 1143	4MAY88	20DEC90			
	DATA DATE				







100

100



100

100