

1. Chairman: Vice President, Advanced Systems and Technology
2. Member: Chief Engineer, Power Plant Engineering
3. Member: Vice President, Nuclear Energy
4. Member: Manager, Nuclear Energy
5. Member: Director of Nuclear Affairs
6. Member: Manager, Nuclear Fuel
7. Member: Power Plant Engineering Principal Engineer
8. Member: Power Plant Engineering Senior Project Manager

#### 6.5.2.3 ALTERNATES

Alternate members shall be appointed in writing by the CNRB Chairman to serve on a temporary basis; however, no more than two alternates shall participate in CNRB activities at any one time.

#### 6.5.2.4 CONSULTANTS

Consultants shall be utilized as determined by the CNRB to provide expert advice to the CNRB.

#### 6.5.2.5 MEETING FREQUENCY

The CNRB shall meet at least once per calendar quarter during the initial year of facility operation following fuel loading and at least once per six months thereafter.

#### 6.5.2.6 QUORUM

A quorum of the CNRB shall consist of the Chairman or designated acting Chairman and four (4) members including alternates. No more



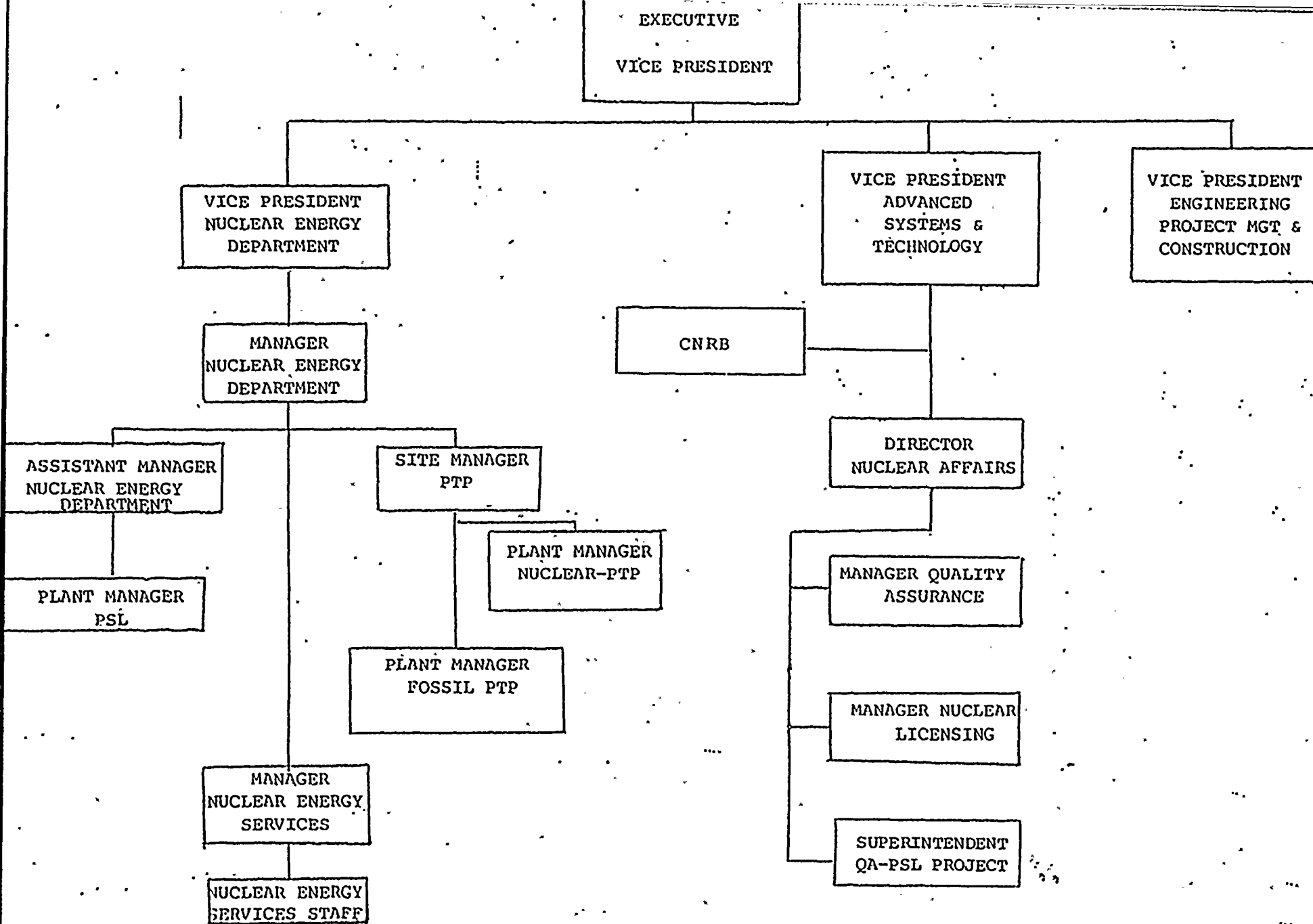


FIGURE 6.2-1 OFFSITE ORGANIZATION FOR FACILITY  
MANAGEMENT AND TECHNICAL SUPPORT



NUCLEAR ENERGY  
SERVICES STAFF  
HEALTH PHYSICS  
REFER TO FIG. 6.2-1

NUCLEAR ENERGY  
SERVICES STAFF  
FIRE PROTECTION  
ADMINISTRATOR  
REFER TO FIG. 6.2-1

FOSSIL  
PLANT

SITE MANAGER

PLANT MANAGER  
NUCLEAR

PLANT  
SECURITY  
SUPERVISOR

OPERATIONS  
SUPERINTENDENT  
NUCLEAR  
1

QUALITY  
CONTROL  
SUPERVISOR

TECHNICAL  
DEPARTMENT  
SUPERVISOR

PLANT  
NUCLEAR  
SAFETY  
COMMITTEE

MAINTENANCE  
SUPERINTENDENT  
NUCLEAR

HEALTH  
PHYSICS  
SUPERVISOR

CHEMISTRY  
SUPERVISOR

OPERATIONS  
SUPERVISOR  
1

REACTOR  
SUPERVISOR

TRAINING  
SUPERVISOR

SHIFT  
TECHNICAL  
ADVISOR

INSTRUMENT  
& CONTROL  
SUPERVISOR

ASSISTANT  
SUPERINTENDENT  
MECHANICAL  
MAINTENANCE  
NUCLEAR

ASSISTANT  
SUPERINTENDENT  
ELECTRICAL  
MAINTENANCE  
NUCLEAR

RADIATION  
PROTECTION  
MAN

NUCLEAR  
PLANT  
SUPERVISOR  
1

NUCLEAR  
WATCH  
ENGINEER  
1

NUCLEAR  
CONTROL  
CENTER  
OPERATOR  
2

UNLICENSED  
OPERATORS

- 1. SENIOR OPERATOR LICENSE
- 2. OPERATOR LICENSE
- \* LICENSED PERSONNEL ON SHIFT  
AS SHOWN IN TABLE 6.2-1

PLANT ORGANIZATION CHART  
FIGURE 6.2-2