

DISTRIBUTION - VOLUME 13 – EMERGENCY PREPAREDNESS PROCEDURES

Distribution Date: 11/28/17 LMB

Filed By: _____

Procedure Number	Revision
13.14.11	012

Procedure Number	Revision

Procedure Number	Revision

Security Receipt Acknowledgement for Control Copies 58, 59 and 214.

I hereby agree that the above stated revisions have been received.

Printed Name: _____

Signature: _____

Date _____

LEVEL 1 FILING (MUST BE FILED SAME DATE AS IMPLEMENTATION)

Copy #	Location	Procedures						Mail Drop	
2	Control Room - Shift Mgr Office	All (Except 13.1.1)						964Y	
	Control Room STA Desk	Distribution List Only						964Y	
31	Technical Support Center/Operations Support Center	All (Except 13.1.1)						964Y	
&	58	CGS Security – SAS-CR – S English	13.1.1	13.5.1	13.5.5	13.11.10	13.12.19	13.13.4	---
		Call for pickup – RA Memo Req'd	13.4.1	13.7.5	13.10.8				
&	59	CGS Security – CAS-GSB – S English	13.1.1	13.5.1	13.5.5	13.10.8	13.11.10	13.13.4	---
		Call for pickup – RA Memo Req'd	13.4.1		13.7.5		13.12.19		
68	Remote Shutdown Room	13.2.1	13.2.2	13.4.1	13.5.1	13.10.1	13.10.9	964Y	
78	Control Room STA Desk	All (Except 13.1.1)						964Y	
83	MUDAC (EOF)	All (Except 13.1.1)						964Y	
90	Joint Information Center	All (Except 13.1.1)						964Y	
94	Emergency Operations Facility	All (Except 13.1.1)						964Y	
160	Technical Support Center/Operations Support Center	All (Except 13.1.1)						964Y	
214	CGS Security - SCC- PAAP- S English	13.4.1	13.5.1	13.10.8	13.11.10	13.13.4	13.14.1	964Y	
	Call for pickup RA Memo Req'd								
238	Alternate Emergency Operations Facility	All (Except 13.1.1)						964Y	

For additional distribution, please refer to Position Specific book located in Document Control.

& PPM 13.1.1 is printed in color, single sided, on 11" x 17" paper, folded, 3-fold punched, stapled on top and distributed by Document Control.

Updated 10/06/17

4x45
NR

DISTRIBUTION - VOLUME 13 – EMERGENCY PREPAREDNESS PROCEDURESDistribution Date: 11/28/17 LMB

Filed By: _____

Procedure Number	Revision
13.14.11	012

Procedure Number	Revision

Procedure Number	Revision

NOTE: Distribution of the PPM 13.1.1 wall flow charts is controlled by PPM 13.1.1A and distribution is performed by EP.

OTHER FILING/ACTIONS

Copy #	Location	Procedures	Mail Drop
6	Simulator	All (Except 13.1.1)	1500
35	NRC Resident Inspector	All (Except 13.1.1)	988C
86	Simulator – STA Desk	All (Except 13.1.1)	1500
129	Operations Training Classroom	All (Except 13.1.1)	1050
132	Operations Training Classroom	All (Except 13.1.1)	1050
219	Operations Training Classroom	All (Except 13.1.1)	1050
220	Operations Training Classroom	All (Except 13.1.1)	1050
999	Security Liaison – ICP Kit – EP	13.11.10	PE30

For additional distribution, please refer to Position Specific book located in Document Control.

NOTE: Distribution of the PPM 13.1.1 wall flow charts is controlled by PPM 13.1.1A and distribution is performed by EP.

DISTRIBUTION - VOLUME 13 – EMERGENCY PREPAREDNESS PROCEDURES

Distribution Date: 11/28/17 LMB

Filed By: _____

Procedure Number	Revision
13.14.11	012

Procedure Number	Revision

Procedure Number	Revision

TO: ENERGY NORTHWEST EXTERNAL CONTROLLED COPY PROCEDURE HOLDERS

The following documents have been revised and are to be inserted into your controlled copy manual and the superseded revisions removed and destroyed. No receipt acknowledgement is required for the listed document(s).

Should you have questions on this distribution please contact Kim Saenz, Records and Information Supervisor at (509)377-2492 or KDSaenz@energy-northwest.com.

Distribution Date:

11/28/17 LMB

Procedure Number	Revision
13.14.11	012

Procedure Number	Revision

Procedure Number	Revision

EXTERNAL DISTRIBUTION

Copy #	Location	Procedures
26	Region IV – US Nuclear Regulatory Commission	All
28	Region IV – US Nuclear Regulatory Commission	All
52	State of Washington, Military Department	All
55	Federal Emergency Management Agency (FEMA)	All
57	Benton County – Department of Emergency Management	All
75	Department of Health Radiation Protection	All
87	Document Control Desk – NRC	All
142	Hanford EOC/SMT	All
164	Oregon State Department of Energy	All
223	Franklin County Emergency Management	All

DISTRIBUTION - VOLUME 13 – EMERGENCY PREPAREDNESS PROCEDURES

Distribution Date: 11/28/17 LMB

Filed By:

Procedure Number	Revision
13.14.11	012

Procedure Number	Revision

Procedure Number	Revision


224	Washington State Department of Health – Office of Radiation Protection	All
-----	--	-----

NOTE: PPM 13.1.1 is printed in color, single sided, on 11" x 17" paper, folded, 3-fold punched, stapled on the top & distributed by Document Control.

NOTE: Distribution of the PPM 13.1.1 wall flow charts is controlled by PPM 13.1.1A and distribution is performed by EP.

Verify Revision Information Prior To Use	Initials	
	Date	

Number: 13.14.11	Use Category: REFERENCE	Major Rev: 012
Title: EP Equipment		Minor Rev: N/A Page: 1 of 65

PLANT PROCEDURES MANUAL	PCN#: N/A
 13.14.11	Effective Date: 11/28/17

Number: 13.14.11	Use Category: REFERENCE	Major Rev: 012
Title: EP Equipment		Minor Rev: N/A Page: 2 of 65

DESCRIPTION OF CHANGES

Justification (required for major revision)
CGS has adopted NEI 99-01 Rev 6 EAL scheme. No rev bars due to greater than 30% change.

Page(s)	Description (including summary, reason, initiating document, if applicable)
Attachments 8.1 and 8.2	Revised Attachments 8.1 and 8.2 based on changes for implementation of NEI 99-01 Rev 6 EAL scheme. Some equipment is no longer used for EAL classification. Some new equipment has been added with the implementation of the new EAL scheme.
Various	Deleted "IC" from "IC/EAL" column heading from attachments. Initiating Condition (IC) is not a useful identifier in this procedure.
11	Removed definitions for "Corrective Maintenance" and "Elective Maintenance", these terms are not used in this procedure.
13	Removed definition of "Other Work" and "Safety Parameter Display System", these terms are not used in this procedure
41	Revised table on page 41 to align with current notification systems for Site and Public.

Number: 13.14.11	Use Category: REFERENCE	Major Rev: 012
Title: EP Equipment		Minor Rev: N/A
		Page: 3 of 65

TABLE OF CONTENTS

	<u>Page</u>
1.0 PURPOSE	4
2.0 RESPONSIBILITIES	4
3.0 DISCUSSION.....	5
4.0 PROCEDURE	7
5.0 DOCUMENTATION	10
6.0 DEFINITIONS	11
7.0 REFERENCES	14
8.0 ATTACHMENTS	14
8.1 EP Related Important Equipment by EPN	15
8.2 EP Related Important Equipment by Function.....	32
8.3 EP Related Important Equipment – TSC	42
8.4 EP Related Important Equipment – OSC	46
8.5 EP Related Important Equipment – EOF (Building 34)	48
8.6 EP Related Important Equipment – Alternate EOF.....	57
8.7 EP Related Important Equipment – JIC.....	60
8.8 Unplanned Loss of Equipment	64
8.9 Planned Loss of Equipment	65

Number: 13.14.11	Use Category: REFERENCE	Major Rev: 012
Title: EP Equipment		Minor Rev: N/A Page: 4 of 65

1.0 PURPOSE

The purpose of this document is to ensure when equipment important to emergency response is removed from service for maintenance or is in a degraded condition, the correct restoration priority is assigned, compensatory measures are implemented, and the equipment is promptly restored to a functional condition.

This procedure provides identification of Important Emergency Preparedness (EP) related equipment. The equipment identified in this procedure is essential to implementation of the Emergency Plan.

For Emergency Response Facilities (ERFs) and associated equipment that are not included in the station work management process, the corrective action process is used to ensure issues are identified and corrected.

The information and direction in this procedure applies to on-site and off-site equipment and facilities normally operated or maintained by Columbia Generating Station that are necessary to meet the requirements of the Emergency Plan.

2.0 RESPONSIBILITIES

2.1 Emergency Preparedness Manager

The Manager, Emergency Preparedness is responsible to assure that Important EP-related equipment is identified and repairs are executed expeditiously as necessary.

2.2 Shift Manager

The Shift Manager is responsible for ensuring that a Condition Report and/or Work Request is generated for Equipment identified in Attachment 8.1 and 8.2 of this procedure, and to ensure identified compensatory actions are put in place.

2.3 Work Control Manager

The Work Control Manager is responsible to assure that deficient conditions of Important EP-related equipment are appropriately prioritized and scheduled to be corrected promptly in the corrective maintenance program.

2.4 Emergency Planners

The Emergency Planners are responsible to assure issues with Important EP-related equipment are identified for correction.

Number: 13.14.11	Use Category: REFERENCE	Major Rev: 012
Title: EP Equipment		Minor Rev: N/A Page: 5 of 65

2.5 Unit Coordinator (Work Control)

Unit Coordinators are responsible to assign appropriate repair priorities to assure that Important EP equipment is factored into the daily work schedule for expeditious repair and return to service.

2.6 Corrective Action Program Manager

Responsible for ensuring that the corrective action program supports the tracking and trending of deficiencies related to EP equipment.

2.7 Design Engineering Manager

Responsible for ensuring that the design change process identifies any impacts to emergency plan commitments and emergency response capabilities.

2.8 Regulatory Affairs Manager

Responsible for providing guidance on compliance with the station licensing basis and related reportability issues.

NOTE: The Emergency Plan is designed as a last line of defense to address design basis accident events at a nuclear power plant, including the capability of protecting public health and safety during and following the accident. Therefore, regulations that govern EP equipment may require more timely restoration than technical specifications or other administrative controls. This procedure provides identification of Important Emergency Preparedness related equipment. The equipment identified in this procedure is essential to implementation of the Emergency Plan.

3.0 DISCUSSION

3.1 INPO 10-007, Equipment Important to Emergency Response, was used as guidance in the development of this procedure. The information contained in this procedure assists Information Technology (IT), Maintenance, and Facilities planners in identifying Important EP equipment and assigning appropriate repair priority to assure prompt return to service of any EP-related component identified here.

3.1.1 Equipment with an identified EPN is listed in Attachment 8.1.

3.1.2 IF there is no EPN, THEN reference Attachment 8.2 to determine if the affected equipment impacts the ability of the ERF to function (i.e. power, HVAC, communications).

3.1.3 Items specific to an Emergency Center are listed in Attachments 8.3 through 8.7. These items will impact the Centers ability to function but will NOT render the center non-functional.

Number: 13.14.11	Use Category: REFERENCE	Major Rev: 012
Title: EP Equipment		Minor Rev: N/A Page: 6 of 65

3.2 Regulatory guidance provided by the Nuclear Energy Institute (NEI) in their guidance NEI 13-01, which was endorsed by the NRC in NUREG 1022 Revision 3, differentiates between "Methods" and "Compensatory Measures," as applicable to the context in which these terms are used for equipment and facilities important to EPlan functions. Those definitions are included here verbatim as they appear in the NEI 13-01 guidance, so that their significance with respect to EPlan functions and EPlan event notifications is understood.

3.2.1 METHOD: A means that could be employed to perform an emergency response function as described in the site emergency plan or an implementing procedure described in the emergency plan. *[Site emergency plans and implementing procedures typically describe primary and one or more alternate methods for performing a given function. Provided that at least one METHOD is available, then the ability to perform the associated function has not been lost.]*

3.2.2 COMPENSATORY MEASURE: A temporary means, established as part of a planned activity, to perform a given emergency response function during a period when the normally used methods are unavailable such that, when implemented, there is a reasonable expectation that the function would be accomplished during an actual emergency, albeit in a possibly degraded manner. *[A COMPENSATORY MEASURE need not meet the same design or operating requirements as the normally used methods but must be sufficient to support effective implementation of the site emergency plan. Also refer to the related term "VIABLE."]*

3.2.3 VIABLE: A COMPENSATORY MEASURE that (1) can restore a required function in a reasonably comparable manner and (2) is proceduralized prior to an event. *[Proceduralized means that the necessary instructions to perform a function exist in a document (e.g., a procedure, a user aid, a night or standing order, etc.) that will be followed by response personnel should an emergency occur. Further, individuals expected to implement the COMPENSATORY MEASURE must be aware of the measure, in advance of its potential or actual implementation. A VIABLE COMPENSATORY MEASURE does not include reliance upon "skill-of-the-craft" or individual judgment.]*

Number: 13.14.11	Use Category: REFERENCE	Major Rev: 012
Title: EP Equipment		Minor Rev: N/A Page: 7 of 65

4.0 PROCEDURE

4.1 Discovery of Degraded or Nonfunctional Equipment Important to Emergency Response (Unplanned Loss)

See Attachment 8.8, Flowchart: Unplanned Loss of Equipment Important to EP. This illustrates the process for addressing an unplanned loss of equipment, such as unplanned maintenance.

NOTE: This section pertains to unanticipated degradation or failure of equipment important to emergency response.

- 4.1.1 Generate a Condition Report and prioritize to restore function. This allows tracking and trending, as well as ensuring timely repair. The priority given to these actions should be commensurate with the significance of the impact on the associated emergency response function.

NOTE: Compensatory Measures identified in this procedure, which is not an Emergency Plan Implementing Procedure (EPIP), may or may not be acceptable Alternate Methods unless so recognized in another EPIP. See PPM 1.10.1, Notifications and Reportable Events, for potential notifications on loss of EP equipment.

- 4.1.2 Compensatory measures associated with the degraded or nonfunctional equipment can be found in the attachments to this procedure.

- 4.1.3 IF the equipment is INPO 10-007 Category A1 or Category A2 equipment, THEN implement identified compensatory measures.

- a. The Shift Manager will implement compensatory measures to address the loss of plant equipment necessary to implement the station emergency plan. The compensatory measures should be documented in the Inop. Equip/LCO/RFO Log section of the Operations Logging System.
- b. The status of out-of-service equipment can be obtained from the Operations Logging System Out of Service EPNs report.
- c. Evaluate the loss of response capability. If the function requires more time to implement or cannot be implemented, evaluate the reportability requirements.
- d. The Shift Manager coordinates with the licensing/regulatory affairs staff to evaluate Nuclear Regulatory Commission (NRC) reporting requirements for out-of-service EP equipment per PPM 1.10.1.

Number: 13.14.11	Use Category: REFERENCE	Major Rev: 012
Title: EP Equipment		Minor Rev: N/A Page: 8 of 65

4.1.4 For INPO 10-007 Category B equipment:

- a. Verify the availability of redundant equipment for degraded or nonfunctional Category B equipment. If redundant equipment is not available, then the equipment should be reevaluated as Category A1 or Category A2 equipment.
- b. Category B equipment is allowed to be out of service provided redundant equipment is available to maintain the emergency response function.
- c. Notify emergency response personnel of the degraded condition and the compensatory measures in effect.

4.2 Removal Of Equipment From Service For Planned Maintenance (Planned Loss)

See Attachment 8.9, Flowchart: Planned Loss of Equipment Important to EP. This illustrates the process for addressing a planned loss of equipment.

NOTE: A rigorous work management process, which includes guidance for EP equipment, is essential to ensure that maintenance is completed and that the equipment is restored to service expeditiously.

- 4.2.1 Individuals who are trained on and knowledgeable of emergency plan requirements should help evaluate equipment configuration changes that may impact emergency plan functions or EAL assessment capabilities.
- 4.2.2 For INPO 10-007 Category A1 or Category A2 equipment, ensure compensatory measures are in place before equipment is removed from service for planned maintenance. Ensure the compensatory measure is controlled in accordance with PPM 13.14.11, PPM 1.3.68, or WCI-4.
 - a. Evaluate the loss of response capability. If the function requires more time to implement or cannot be implemented, evaluate the reportability requirements.
 - b. The Shift Manager will implement the compensatory measures as soon as practical.
- 4.2.3 For INPO 10-007 Category B equipment, verify the availability of redundant equipment to ensure the emergency preparedness function is maintained prior to removing the equipment for planned maintenance or testing.
 - a. Ensure that the equipment being removed from service is not being credited as a compensatory measure for another piece of equipment.
 - b. When redundant INPO 10-007 Category B equipment is not available to maintain the function, the affected INPO 10-007 Category B equipment is treated as INPO 1-007 Category A equipment.

Number: 13.14.11	Use Category: REFERENCE	Major Rev: 012
Title: EP Equipment		Minor Rev: N/A Page: 9 of 65

4.3 Degradation or Loss of Emergency Response Facilities (ERFs)

NOTE: Maintain ERFs, including alternate or backup facilities and their associated equipment, in a state of readiness. The following direction is related to planned maintenance and emergent issues and extends to all ERFs, including primary, alternate, and backup facilities as well as the equipment required to support their operation and habitability. Because of the broad scope of emergency preparedness functions conducted from these facilities, the loss of an ERF can have a significant impact on emergency plan implementation. Restoration of nonfunctional or degraded ERFs requires prompt management attention.

4.3.1 ERF Emergent Issues:

NOTE: Degraded or nonfunctioning equipment associated with these facilities is restored in a timely manner.

- a. If primary power is lost to any ERF, then establish emergency power (if available).
- b. If power cannot be restored to the ERF, then contact Emergency Preparedness to establish a backup or an alternate ERF (if available).
- c. If INPO 10-007 Category B equipment used to perform a specified ERF function is lost or degraded, then verify the availability of redundant equipment. If redundant INPO 10-007 Category B equipment is not available, then treat the equipment as INPO 10-007 Category A.
- d. If INPO Category A1 or Category A2 equipment used to perform a specified ERF function is lost or degraded, then implement the appropriate compensatory measures.
- e. To ensure effective implementation of the emergency plan, keep the affected members of the emergency response organization informed of changes to ERF status or availability and any associated compensatory measures.

Number: 13.14.11	Use Category: REFERENCE	Major Rev: 012
Title: EP Equipment		Minor Rev: N/A Page: 10 of 65

4.3.2 ERF Planned Maintenance

- a. Before a facility or its associated support equipment is removed from service, the Emergency Preparedness manager or designee should evaluate equipment and structural configuration changes that may impact Emergency Plan functions.
- b. Identify and implement compensatory measures before the facility is removed from service or is otherwise rendered uninhabitable. Minimize the out-of-service time for the facility.
- c. Maintenance should inform station management, including EP, of unanticipated delays in restoration.
- d. To ensure effective implementation of the emergency plan, keep the affected members of the emergency response organization informed of changes to ERF status or availability and any associated compensatory measures.

4.3.3 ERF Restoration

- a. In order to apply the appropriate priority and resources to the restoration effort, the Emergency Preparedness manager or designee notifies station management when the ERF or supporting equipment cannot be restored promptly.
- b. Following the restoration of ERF electrical power after an unexpected loss, the center Emergency Planner will walk down the facility to ensure the necessary support functions are available including the following:
 - Habitability
 - Communications
 - Dose assessment
 - Lighting and electrical power
 - Computers and Intranet
 - Technical data acquisition and display

5.0 DOCUMENTATION

None

Number: 13.14.11	Use Category: REFERENCE	Major Rev: 012
Title: EP Equipment		Minor Rev: N/A
		Page: 11 of 65

6.0 DEFINITIONS

- 6.1 Alternate indication - a backup means of monitoring a parameter or condition that should approximate the primary indication it is replacing.
- 6.2 Compensatory measure - a temporary means of mitigating the degradation or loss of an emergency response function or of maintaining the emergency response function until the equipment is restored to a fully functional condition:
- 6.2.1 A compensatory measure is the best available means to maintain the emergency preparedness function. Compensatory measures may include the use of redundant equipment.
 - 6.2.2 Compensatory measures are put in place prior to scheduled equipment outages and design modifications and without delay following equipment loss or facility functional failures, to prevent or mitigate any loss of function that could result from the equipment being out of service.
 - 6.2.3 Compensatory measures are incorporated into appropriate station processes, programs, and procedures. The station work management priority criteria appropriately address emergency preparedness equipment. Measures are in place to adjust work priorities when the compensatory measure put in place exceeds the time allowed in the evaluation or when the compensatory measure itself no longer maintains the emergency preparedness function.
 - 6.2.4 Compensatory measures that rely on periodic monitoring also have an event-based trigger that prompts immediate and more frequent monitoring. For example, periodic sampling (such as once per shift) may be used to compensate for a nonfunctional ventilation radiation monitor. However, any increase in elevated area or airborne radiation levels in the affected buildings after the compensatory measure is put in place should trigger immediate and more frequent sampling.
- 6.3 Critical Digital Assets - Some of the components included in this document may be considered Critical Digital Assets. Contact Cyber Security Assessment Team (CSAT) for further information if necessary.
- 6.4 Emergency response facility (ERF) - facilities, buildings, and structures necessary to implement the site emergency plan

Number: 13.14.11	Use Category: REFERENCE	Major Rev: 012
Title: EP Equipment		Minor Rev: N/A
		Page: 12 of 65

6.5 Equipment Important To Emergency Response (EP Equipment) -

- 6.5.1 Systems, structures, and components, as well as essential tools and equipment, necessary to implement the emergency plan.
- 6.5.2 The level of detail used in determining the functionality of these items should be sufficient to allow the shift manager (SM) or station leadership team members to identify any loss or degradation of function that supports the emergency plan.
- 6.5.3 Essential tools and equipment include facility computer links to the plant computer, dedicated telephone lines, handheld radiation survey meters, air samplers, and specially equipped radiation monitoring team vehicles. The loss or degradation of these items would result in the loss of an emergency response function, as identified in the emergency plan.
- 6.5.4 Nonessential tools and equipment are those items that, although useful, would not result in a loss of function or diminish the emergency response capability and that are not considered equipment important to emergency response. Nonessential tools and equipment include emergency response facility fax machines, white boards, furniture, and loudspeakers.

6.6 Functional readiness -

- 6.6.1 The capability of emergency response facilities and EP equipment to do what they were designed to do
- 6.6.2 Consult the documents listed in the References section for regulatory guidance related to "unavailable time" and restoration timeliness.
- 6.7 INPO 10-007 Category A1 equipment - equipment providing the sole indication or with little or no redundancy for a parameter used to assess an emergency action level (EAL) threshold.
- 6.8 INPO 10-007 Category A2 equipment - equipment providing the sole means of fulfilling an emergency response function.
- 6.9 INPO 10-007 Category B equipment - equipment having redundant components or trains that fulfill an emergency response function or redundant indications for a parameter used to assess an EAL threshold.
- 6.10 Loss of function - the inability of a facility, system, or component, including essential tools and equipment, to fulfill its emergency response purpose

Number: 13.14.11	Use Category: REFERENCE	Major Rev: 012
Title: EP Equipment		Minor Rev: N/A Page: 13 of 65

6.11 Maintenance actions that restore -

- 6.11.1 Restoring the capability of an emergency response function by repair, overhaul, or replacement.
- 6.11.2 This includes servicing, parts replacement, surveillance, modification, and testing as defined in INPO AP-913, *Equipment Reliability Process Description*.
- 6.11.3 As required by INPO AP-928, *Work Management Process Description*, maintenance activities that impact emergency preparedness equipment, systems, or facilities must be controlled by a work management process specific to the process owner requirements.
- 6.11.4 This procedure applies to EP equipment that site personnel or their contractors normally control and maintain.

6.12 Plant equipment -

NOTE: In some cases, the equipment required to maintain emergency preparedness systems may be outside the scope of the plant work management process. In such cases, maintenance or repair of that equipment should be managed under processes applicable to the responsible organization.

- 6.12.1 Includes components defined by INPO AP-913, *Equipment Reliability Process Description*, as critical, noncritical, or run-to-failure
 - 6.12.2 Plant equipment required to maintain federal or state regulatory compliance or emergency preparedness systems will be included in this grouping. If a component does not have a criticality code assigned per AP-913, the equipment should be considered run-to-failure.
- 6.13 Timely restoration - Actions site personnel take to return degraded or out-of-service EP equipment to service commensurate with the significance of the associated emergency response function.

Number: 13.14.11	Use Category: REFERENCE	Major Rev: 012 Minor Rev: N/A Page: 14 of 65
Title: EP Equipment		

7.0 REFERENCES

- 7.1 INPO 10-007, August 2010 Equipment Important to Emergency Response
- 7.2 INPO 08-007, Emergency Preparedness Manual
- 7.3 SWP-MAI-01, Work Management Process Overview
- 7.4 SWP-SEC-11, Protection of Sensitive But Un-classified Information
- 7.5 PPM 1.3.68, Work Management Process
- 7.6 OI-41, Operations Work Control Expectations
- 7.7 IMC 0609 Appendix B, Emergency Preparedness Significance Determination Process
- 7.8 INPO AP-913, Equipment Reliability Process Description
- 7.9 INPO AP 928, Work Management Process Description
- 7.10 10 CFR 54(q), Code of Federal Regulations
- 7.11 NUREG 0696, Functional Criteria for Emergency Response Facilities
- 7.12 WCI-4, Online Work Control Processes
- 8.13 PPM 1.10.1 Notifications and Reportable Events

8.0 ATTACHMENTS

- 8.1 EP Related Important Equipment by EPN
- 8.2 EP Related Important Equipment by Function
- 8.3 EP Related Important Equipment – TSC
- 8.4 EP Related Important Equipment – OSC
- 8.5 EP Related Important Equipment – EOF (Building 34)
- 8.6 EP Related Important Equipment – Alternate EOF
- 8.7 EP Related Important Equipment – JIC
- 8.8 Unplanned Loss of Equipment
- 8.9 Planned Loss of Equipment

Number: 13.14.11	Use Category: REFERENCE	Major Rev: 012
Title: EP Equipment		Minor Rev: N/A
		Page: 15 of 65

EP RELATED IMPORTANT EQUIPMENT BY EPN

<u>EPN</u>	<u>Noun Name / Description</u>	<u>EP Required Mode</u>	<u>10-007 Category</u>	<u>EAL</u>	<u>Alternate Indication and / or Compensatory Measure</u>	<u>Comments</u>
Annunciator P602.A5-3.3: "SJAE CONDRS OUTLET RAD Hi Hi"	Off-gas Pretreatment Radiation Hi Hi Alarm.	1 2 3	A1	MU4.1	Establish periodic monitoring of OG-RR-604. Refer to ODCM 6.1.2.1.	Refer to EPN OG-RIS-612 Alternate Method
Annunciator P851.S1-5.1. "OPERATING BASIS EARTHQUAKE"	Operating Basis Earthquake alarm.	1 2 3 4 5 def	B	HU2.1	Establish periodic monitoring of H13 P823 (Board L). If seismic instrumentation indications are not available, use information in Attachment 7.4 of ABN-EARTHQUAKE to estimate seismic intensity level.	Refer to EPN SEIS-SS-1
AEA-AD-51	TSC M.O. Exhaust Air Damper for AEA-FN-51	1 2 3 4 5 def	A2	NA	Notify the TSC EP Planner. If a FAZ signal occurs, manually close AEA-AD-51. Otherwise, consider relocating the TSC to the Main Control Room.	
AEA-AD-52	TSC MO Suction Damper for AMA-FN-52.	1 2 3 4 5 def	A2	NA	Notify the TSC EP Planner. If a FAZ signal occurs, manually open AEA-AD-52. Otherwise, consider relocating the TSC to the Main Control Room.	
AEA-FN-51	TSC Exhaust Fan.	1 2 3 4 5 def	A2	NA	Notify the TSC EP Planner. If a FAZ signal occurs, de-energize the fan at PP-TSC-1.	
AMA-AD-51	TSC MO Exhaust Damper for AMA-FN-52	1 2 3 4 5 def	A2	NA	Notify the TSC EP Planner. If a FAZ signal occurs, manually open AMA-AD-51. Otherwise, consider relocating the TSC to the Main Control Room.	
AMA-CF-52	TSC AMA-FU-52 Charcoal Filter/Adsorber	1 2 3 4 5 def	A2	NA	Notify the TSC EP Planner. Establish periodic radiological monitoring of the TSC. If a FAZ occurs, consider relocating the TSC to the Main Control Room.	

Attachment 8.1, EP Related Important Equipment by EPN

Number: 13.14.11	Use Category: REFERENCE	Major Rev: 012
Title: EP Equipment		Minor Rev: N/A
		Page: 16 of 65

EPN	Noun Name / Description	EP Required Mode	10-007 Category	EAL	Alternate Indication and / or Compensatory Measure	Comments
AMA-FL-52	TSC AMA-FU-52 Pre filter	1 2 3 4 5 def	A2	NA	Notify the TSC EP Planner. Establish periodic radiological monitoring of the TSC. If a FAZ occurs, consider relocating the TSC to the Main Control Room.	
AMA-FN-51	AMA-AH-51 Recirculation Fan	1 2 3 4 5 def	A2	NA	Notify the TSC EP Planner Establish alternate cooling as needed. If a FAZ occurs, consider relocating the TSC to the Main Control Room.	
AMA-FN-52	TSC Emergency Supply Fan	1 2 3 4 5 def	A2	NA	Notify the TSC EP Planner. Establish periodic radiological monitoring of the TSC. If a FAZ occurs, consider relocating the TSC to the Main Control Room.	
AMA-FU-52	TSC Emergency HEPA/Carbon Filter Unit	1 2 3 4 5 def	A2	NA	Notify the TSC EP Planner. Establish periodic radiological monitoring of the TSC. If a FAZ occurs, consider relocating the TSC to the Main Control Room	
AMA-HF-52	TSC AMA-FU-51 HEPA Filter	1 2 3 4 5 def	A2	NA	Notify the TSC EP Planner. Establish periodic radiological monitoring of the TSC. If a FAZ occurs, consider relocating the TSC to the Main Control Room.	
AOA-AD-51	TSC M.O. Outside Air Damper	1 2 3 4 5 def	A2	NA	Notify the TSC EP Planner. If a FAZ signal occurs, manually close AMA-AD-51. Otherwise, consider relocating the TSC to the Main Control Room.	
AOA-EHC-51	TSC AMA-AH-51 Outside Air Duct Heater	1 2 3 4 5 def	A2	NA	Notify the TSC EP Planner. Establish alternate cooling/heating as needed.	

Attachment 8.1, EP Related Important Equipment by EPN

Number: 13.14.11	Use Category: REFERENCE	Major Rev: 012
Title: EP Equipment		Minor Rev: N/A
		Page: 17 of 65

EPN	Noun Name / Description	EP Required Mode	10-007 Category	EAL	Alternate Indication and / or Compensatory Measure	Comments
AOA-FN-51	TSC Remote Air Intake Fan	1 2 3 4 5 def	A2	NA	Notify the TSC EP Planner. Establish periodic radiological monitoring of the TSC. If a FAZ occurs, consider relocating the TSC to the Main Control Room.	
AOA-V-51A	TSC Remote Air Intake Isolation Valve	1 2 3 4 5 def	A2	NA	Notify the TSC EP Planner. If a FAZ occurs, manually open AOA-V-51A or 51B, as appropriate. Otherwise, consider relocating the TSC to the Main Control Room..	
AOA-V-51B	TSC Remote Air Intake Isolation Valve	1 2 3 4 5 def	A2	NA	Notify the TSC EP Planner. If a FAZ occurs, manually open AOA-V-51A or 51B, as appropriate. Otherwise, consider relocating the TSC to the Main Control Room.	
ARE-CR-51	TSC Chiller	1 2 3 4 5 def	A2	NA	Notify the TSC EP Planner. Establish alternate cooling as needed. Establish periodic temperature monitoring of the TSC.	
ARE-TCV-1	TSC AMA-CC-51 Temperature Control Valve (Expansion Valve)	1 2 3 4 5 def	A2	NA	Notify the TSC EP Planner. Establish alternate cooling/heating as needed. Establish periodic temperature monitoring of the TSC. Verify ARE-TCV-2 is functional.	
ARE-TCV-2	TSC AMA-CC-52 Temperature Control Valve (Expansion Valve)	1 2 3 4 5 def	A2	NA	Notify the TSC EP Planner Establish alternate cooling/heating as needed. Establish periodic temperature monitoring of the TSC. Verify ARE-TCV-1 is functional.	

Attachment 8.1, EP Related Important Equipment by EPN

Number: 13.14.11	Use Category: REFERENCE	Major Rev: 012
Title: EP Equipment		Minor Rev: N/A
		Page: 18 of 65

EPN	Noun Name / Description	EP Required Mode	10-007 Category	EAL	Alternate Indication and / or Compensatory Measure	Comments
ARE-TIC-51	TSC Temperature Indicating Controller For ARE-CR-51	1 2 3 4 5 def	A2	NA	Notify the TSC EP Planner. Establish alternate cooling as needed. Establish periodic temperature monitoring of the TSC. If needed, establish alternate temperature control.	
ARE-TIS-52	TSC AOA-AD-51 Supply Plenum Temp Switch	1 2 3 4 5 def	A2	NA	Notify the TSC EP Planner. Establish alternate cooling/heating as needed	
ARM-RIS-1	Reactor Building 606' Fuel Pool Area	1 2 3 4 5 def	A1	RU2.1	ARM-RIS-1 / 2 OR	
ARM-RIS-2	Reactor Building 606' Fuel Pool Area	1 2 3 4 5 def		RA2.2	HP monitoring during load movement over spent fuel	

Number: 13.14.11	Use Category: REFERENCE	Major Rev: 012
Title: EP Equipment		Minor Rev: N/A
		Page: 19 of 65

EPN	Noun Name / Description	EP Required Mode	10-007 Category	EAL	Alternate Indication and / or Compensatory Measure	Comments						
ARM-RIS-4	Reactor Building 522' East CRD Area	<table><tr><td>1</td><td>2</td><td>3</td><td>4</td><td>5</td><td></td></tr></table>	1	2	3	4	5		A1	CG1.1 CG1.2 FS1.1 FA1.1	Refer to PPM 13.8.1	Alternate Method
1	2	3	4	5								
ARM-RIS-5	Reactor Building 522' West CRD Area	<table><tr><td>1</td><td>2</td><td>3</td><td>4</td><td>5</td><td></td></tr></table>	1	2	3	4	5					
1	2	3	4	5								
ARM-RIS-6	Reactor Building 572' H2 Recombiner Area	<table><tr><td>1</td><td>2</td><td>3</td><td>4</td><td>5</td><td></td></tr></table>	1	2	3	4	5					
1	2	3	4	5								
ARM-RIS-7	Reactor Building 501' TIP Drive Area	<table><tr><td>1</td><td>2</td><td>3</td><td>4</td><td>5</td><td></td></tr></table>	1	2	3	4	5					
1	2	3	4	5								
ARM-RIS-8	Reactor Building 572' SGT System Area	<table><tr><td>1</td><td>2</td><td>3</td><td>4</td><td>5</td><td></td></tr></table>	1	2	3	4	5					
1	2	3	4	5								
ARM-RIS-9	Reactor Building 422' "A" RHR Pump Room	<table><tr><td>1</td><td>2</td><td>3</td><td>4</td><td>5</td><td></td></tr></table>	1	2	3	4	5					
1	2	3	4	5								
ARM-RIS-10	Reactor Building 422' "B" RHR Pump Room	<table><tr><td>1</td><td>2</td><td>3</td><td>4</td><td>5</td><td>def</td></tr></table>	1	2	3	4	5	def	A1	RA3.1 CG1.1 CG1.2 FS1.1 FA1.1		
1	2	3	4	5	def							
ARM-RIS-11	Reactor Building 422' "C" RHR Pump Room	<table><tr><td>1</td><td>2</td><td>3</td><td>4</td><td>5</td><td></td></tr></table>	1	2	3	4	5					
1	2	3	4	5								
ARM-RIS-12	Reactor Building 422' RCIC Pump Room	<table><tr><td>1</td><td>2</td><td>3</td><td>4</td><td>5</td><td></td></tr></table>	1	2	3	4	5					
1	2	3	4	5								
ARM-RIS-13	Reactor Building 422' HPCS Pump Room	<table><tr><td>1</td><td>2</td><td>3</td><td>4</td><td>5</td><td></td></tr></table>	1	2	3	4	5		A1	CG1.1 CG1.2 FS1.1 FA1.1		
1	2	3	4	5								

Attachment 8.1, EP Related Important Equipment by EPN

Number: 13.14.11	Use Category: REFERENCE	Major Rev: 012
Title: EP Equipment		Minor Rev: N/A
		Page: 20 of 65

EPN	Noun Name / Description	EP Required Mode	10-007 Category	EAL	Alternate Indication and / or Compensatory Measure	Comments
ARM-RIS-19	Rad Waste Building 501' Main Control Room	1 2 3 4 5 def	A1	RA3.1 CG1.1 CG1.2 FS1.1 FA1.1	Non-wireless Area Radiation Monitor	
ARM-RIS-23	Reactor Building 422' CRD Pump Room	1 2 3 4 5	A1	CG1.1 CG1.2 FS1.1 FA1.1	Refer to PPM 13.8.1 5.3.1 Table 24	Alternate Method
ARM-RIS-24	Reactor Building 471' Northwest Area	1 2 3 4 5				
ARM-RIS-30	Radwaste Control Rm	1 2 3 4 5 def	A1	RA3.1 CG1.1 CG1.2 FS1.1 FA1.1	Refer to PPM 13.8.1	
ARM-RIS-32	Reactor Building 471' High Range ARM	1 2 3 4 5	A1	CG1.1 CG1.2 FS1.1 FA1.1	Refer to PPM 13.8.1 5.3.1 Table 24	Alternate Method
ARM-RIS-33	Reactor Building 501' High Range ARM	1 2 3 4 5				
ARM-RIS-34	Reactor Building 606' High Range ARM	1 2 3 4 5 def	A1	RU2.1 RA2.2	ARM-RIS-1/2 OR HP monitoring during load movement over spent fuel	

Attachment 8.1, EP Related Important Equipment by EPN

Number: 13.14.11	Use Category: REFERENCE	Major Rev: 012
Title: EP Equipment		Minor Rev: N/A
		Page: 21 of 65

EPN	Noun Name / Description	EP Required Mode	10-007 Category	EAL	Alternate Indication and / or Compensatory Measure	Comments
CMS-LR-3	Suppression Pool Level Recorder	1 2 3 4 5	B	CA1.1	Redundant Instrument	HCTL
CMS-LR-4	Suppression Pool Level Recorder	1 2 3 4 5		CU1.1		
CMS-PR-1	Primary Containment Pressure	1 2 3 4 5	B	CG1.2	Redundant Instrument	<ul style="list-style-type: none"> PC Loss RCS Loss HCTL
CMS-PR-2	Primary Containment Pressure	1 2 3 4 5		CS1.2		
CMS-PR-3	Wetwell Pressure	1 2 3 4 5		MA3.1		
CMS-PR-4	Wetwell Pressure	1 2 3 4 5		MU3.1		
CMS-RIS-27E	In-Containment Hi Range Area Radiation Readout	1 2 3	B	MS6.1	CMS-RIS-27A/B OR Perform Core Damage Estimate if needed	<ul style="list-style-type: none"> PC Potential Loss RCS Loss Fuel Clad Loss URI
CMS-RIS-27F	In-Containment Hi Range Area Radiation Readout	1 2 3		CG1.1		
				CG1.2		
				FA1.1		
				FS1.1		
				FG1.1		

Attachment 8.1, EP Related Important Equipment by EPN

Number: 13.14.11	Use Category: REFERENCE	Major Rev: 012
Title: EP Equipment		Minor Rev: N/A
		Page: 22 of 65

EPN	Noun Name / Description	EP Required Mode	10-007 Category	EAL	Alternate Indication and / or Compensatory Measure	Comments						
CMS-SR-13	H2/O2 Analyzer	<table><tr><td></td><td></td><td></td><td>4</td><td>5</td><td></td></tr></table>				4	5		B	CG1.1	CMS-SR-14/13	<ul style="list-style-type: none">PC Potential Loss
			4	5								
CMS-SR-14	H2/O2 Analyzer	<table><tr><td></td><td></td><td></td><td>4</td><td>5</td><td></td></tr></table>				4	5		CG1.2			
			4	5								
CMS-TR-5	Wetwell Temp	<table><tr><td>1</td><td>2</td><td>3</td><td></td><td></td><td></td></tr></table>	1	2	3				B	MA3.1	Redundant Instrument	<ul style="list-style-type: none">PC Potential LossHCTL
1			2	3								
CMS-TR-6	MU3.1 MS6.1											
EDR-FRS-623	Reactor Bldg EDR-FT-37 and Drywell FDR-FT-38 Recorder	<table><tr><td>1</td><td>2</td><td>3</td><td>4</td><td>5</td><td></td></tr></table>	1	2	3	4	5		A1	CA1.1 CU1.1 MU5.1	Manual Determination	
1	2	3	4	5								
E-LP-TSC1	TSC Lighting Power Supply	<table><tr><td>1</td><td>2</td><td>3</td><td>4</td><td>5</td><td>def</td></tr></table>	1	2	3	4	5	def	A2	NA	Notify the TSC EP Planner. Relocate TSC	
1	2	3	4	5	def							
E-MC-7AB	TSC power supply.	<table><tr><td>1</td><td>2</td><td>3</td><td>4</td><td>5</td><td>def</td></tr></table>	1	2	3	4	5	def	A2	NA	Notify the TSC EP Planner. Relocate TSC	
1	2	3	4	5	def							
E-PP-TSC1	TSC Power Panel	<table><tr><td>1</td><td>2</td><td>3</td><td>4</td><td>5</td><td>def</td></tr></table>	1	2	3	4	5	def	A2	NA	Notify the TSC EP Planner. Relocate TSC	
1	2	3	4	5	def							
E-VM-DPS1/1	125 VDC VITAL DIST PNL S1/1	<table><tr><td>1</td><td>2</td><td>3</td><td>4</td><td>5</td><td></td></tr></table>	1	2	3	4	5		A1	CU4.1 MS2.1 MG1.2	Local voltmeter or on back of remote indication meter.	
1	2	3	4	5								
E-VM-DPS1/2	125 VDC VITAL DIST PNL S1/2	<table><tr><td>1</td><td>2</td><td>3</td><td>4</td><td>5</td><td></td></tr></table>	1	2	3	4	5		A1	CU4.1 MS2.1 MG1.2	Local voltmeter or on back of remote indication meter.	
1	2	3	4	5								

Attachment 8.1, EP Related Important Equipment by EPN

Number: 13.14.11	Use Category: REFERENCE	Major Rev: 012
Title: EP Equipment		Minor Rev: N/A
		Page: 23 of 65

EPN	Noun Name / Description	EP Required Mode	10-007 Category	EAL	Alternate Indication and / or Compensatory Measure	Comments
FDR-RIS-606	Radwaste Liquid Effluent Rate meter	1 2 3 4 5 def	A1	RU1.1 RA1.2	Perform Sample and Verify Release Rate Calculation Prior to Release.	
FDR-LS-41	RHR "A" pump room level high annunciator	1 2 3 4 5	A2	CG1.2 CS1.2 CA6.1 MA8.1 HU3.2	Visual once per shift	
FDR-LS-42	RHR "B" pump room level high annunciator	1 2 3 4 5				
FDR-LS-43	RHR "C" pump room level high annunciator	1 2 3 4 5				
FDR-LS-44	RCIC pump room level high annunciator	1 2 3 4 5				
FDR-LS-45	LPCS pump room level high annunciator	1 2 3 4 5				
FDR-LS-46	HPCS pump room level high annunciator	1 2 3 4 5				
FPC-LI-21	Spent Fuel Pool Water Level	1 2 3 4 5 def	B	RG2.1 RS2.1 RA2.1 RA2.3 RU2.1	FPC-LIT-21A, 21B or 21 OR Visual twice per Shift OR Skimmer Surge Tank Low Level Not In With FPC Flow	Preferred compensatory measure is a level indicator
FPC-LIT-21A	Spent Fuel Pool Water Level	1 2 3 4 5 def				
FPC-LIT-21B	Spent Fuel Pool Water Level	1 2 3 4 5 def				

Attachment 8.1, EP Related Important Equipment by EPN

Number: 13.14.11	Use Category: REFERENCE	Major Rev: 012
Title: EP Equipment		Minor Rev: N/A
		Page: 24 of 65

EPN	Noun Name / Description	EP Required Mode	10-007 Category	EAL	Alternate Indication and / or Compensatory Measure	Comments
LD-TE-3A/B	RWCU-P-1A Rm	1 2 3	B	FA1.1 FS1.1 FG1.1	Use Leak Detection temperature element in same vicinity	<ul style="list-style-type: none"> PC Loss RCS Potential Loss
LD-TE-3C/D	RWCU-P-1B Rm	1 2 3				
LD-TE-4A/B	RCIC Pump Rm	1 2 3				
LD-TE-18A/B	RHR-P-2B Rm	1 2 3				
LD-TE-18C/D	RHR-P-2A Rm	1 2 3				
LD-TE-18E/F/G/H	RHR A HX Rm	1 2 3				
LD-TE-18J/K/L/M	RHR B HX Rm	1 2 3				
LD-TE-24A/B	RWCU Pipe Area RB 548 N (R509)	1 2 3				
LD-TE-24C/D	RWCU Pipe Area RB 548 S (R511)	1 2 3				
LD-TE-24E/F	RWCU Pipe Area RB 522 N (R408)	1 2 3				
LD-TE-24G/H	Above RWCU Pump Rooms RB 522 (R409)	1 2 3				
LD-TE-24J/K	TIP Mezzanine RB 501 NE (R313)	1 2 3				
LD-TE-31A/B/C/D	Main Steam Tunnel	1 2 3				

Attachment 8.1, EP Related Important Equipment by EPN

Number: 13.14.11	Use Category: REFERENCE	Major Rev: 012
Title: EP Equipment		Minor Rev: N/A
		Page: 25 of 65

EPN	Noun Name / Description	EP Required Mode	10-007 Category	EAL	Alternate Indication and / or Compensatory Measure	Comments
MET-CPU-1A	Primary Control Rack CPU	1 2 3 4 5 def	B	N/A	Channel B Met Tower instruments Hanford FFTF Website	FFTF is Alternate METHOD
MET-CPU-1B	Backup Control Rack CPU	1 2 3 4 5 def	B	N/A	Channel A Met Tower instruments Hanford FFTF Website	FFTF is Alternate METHOD
MET-TE-10A	Primary 245' Temperature Element	1 2 3 4 5 def	B	N/A	245' temperature on Channel B on eDNA/PDIS Hanford FFTF Website	FFTF is Alternate METHOD
MET-TE-10B	Backup 245' Temperature Element	1 2 3 4 5 def	B	N/A	245' temperature on Channel A on eDNA/PDIS Hanford FFTF Website	FFTF is Alternate METHOD
MET-TE-11A	Primary 33' Temperature Element	1 2 3 4 5 def	B	N/A	33' temperature on Channel B on eDNA/PDIS Hanford FFTF Website	FFTF is Alternate METHOD
MET-TE-11B	Backup 33' Temperature Element	1 2 3 4 5 def	B	N/A	33' temperature on Channel A on eDNA/PDIS Hanford FFTF Website	FFTF is Alternate METHOD
MET-TR-1	Temperature Recorder	1 2 3 4 5 def	B	NA	Delta temperature (245'-33') on Channel A or B on eDNA Hanford FFTF Website	FFTF is Alternate METHOD
MET-WDR-4	Wind Direction Recorder	1 2 3 4 5 def	B	NA	33' wind direction on Channel A or B on eDNA Hanford FFTF Website	FFTF is Alternate METHOD
MET-WMON-2A	Primary 33' Wind Speed/Direction Monitor	1 2 3 4 5 def	B	N/A	33' wind speed/direction on Channel B on eDNA/PDIS Hanford FFTF Website	FFTF is Alternate METHOD

Attachment 8.1, EP Related Important Equipment by EPN

Number: 13.14.11	Use Category: REFERENCE	Major Rev: 012
Title: EP Equipment		Minor Rev: N/A
		Page: 26 of 65

EPN	Noun Name / Description	EP Required Mode	10-007 Category	EAL	Alternate Indication and / or Compensatory Measure	Comments
MET-WMON-2B	Backup 33' Wind Speed/Direction Monitor	1 2 3 4 5 def	B	N/A	33' wind speed/direction on Channel A on eDNA/PDIS Hanford FFTF Website	FFTF is Alternate METHOD
MET-WSR-4	Wind Speed Recorder	1 2 3 4 5	B	CA6.1 MA8.1	33' wind speed on Channel A or B on eDNA Hanford FFTF Website	FFTF is Alternate METHOD
MS-LR-615	RPV Level – Fuel Zone	1 2 3 4 5	B	CG1.1 CS1.1 CS1.2 CA1.1 FS1.1 FG1.1 MG1.1 MS6.1	Redundant Instrument	<ul style="list-style-type: none"> TAF SAG Entry RCS Loss Fuel Clad Loss
MS-LR/PR-623A	RPV Press & Level Recorder (Post Acc Ckt A)	4 5	B	CS1.1 CA1.1	Redundant Instrument	Potential HCTL
MS-LR/PR-623B	Post Accident Mon Instr Loop B Press & Level Recorder	4 5				
OFMA-HF-1C	HEPA Filter Bank for AHU1 Cold Deck	1 2 3 4 5 def	A2	NA	Notify EOF Emergency Planner	EOF confirms habitability upon reporting and relocates if necessary
OFMA-HF-1H	HEPA Filter Bank for AHU1 Hot Deck	1 2 3 4 5 def	A2	NA	Notify EOF Emergency Planner	EOF confirms habitability upon reporting and relocates if necessary
OFMA-HF-3	EHPA Filter bank for supply fan 3	1 2 3	A2	NA	Notify EOF Emergency Planner	EOF confirms habitability upon reporting and relocates if necessary

Attachment 8.1, EP Related Important Equipment by EPN

Number: 13.14.11	Use Category: REFERENCE	Major Rev: 012
Title: EP Equipment		Minor Rev: N/A
		Page: 27 of 65

EPN	Noun Name / Description	EP Required Mode	10-007 Category	EAL	Alternate Indication and / or Compensatory Measure	Comments
OG-RIS-612	Off-Gas Pretreatment Rad Rate meter	1 2 3	A1	MU4.1	Refer to ODCM 6.1.2.1 and PPM 13.8.1	Refer to EPN - Annunciator P602.A5-3.3: "SJAЕ CONDRS OUTLET RAD Hi Hi" Alternate Method
PRM-DPT-2 PRM-SQRT-2 PRM-FI-2	Reactor Building Flow Rate Instruments	1 2 3 4 5 def	A1	RG1.1 RS1.1 RA1.1 RU1.1	Refer to ODCM 6.1.2.D	Alternate Method ODCM 6.1.2.D
PRM-RE-1B	Reactor Building Exhaust, Intermediate	1 2 3 4 5 def	A1	RU1.1	Direct HP to establish Stack Door Monitor (SDM) per PPM 11.2.24.2 -- radiation monitoring at the RB Stack Access Door (R-DOOR-R515). SDM readings are obtained from HP or from eDNA Point EP99M in ENW.WRM.	SDM is Alternate METHOD
PRM-RE-1C	Reactor Building Exhaust, High	1 2 3 4 5 def	A1	RG1.1 RS1.1 RA1.1	Direct HP to establish Stack Door Monitor (SDM) per PPM 11.2.24.2 -- radiation monitoring at the RB Stack Access Door (R-DOOR-R515). SDM readings are obtained from HP or from eDNA Points EP99M or EP99H in ENW.WRM.	SDM is Alternate METHOD
REA-RIS-609A-D	Reactor Building Vent	1 2 3 4 5 def	B	RA2.2	Redundant Instrument	
RFW-PI-605	Reactor Pressure (0-1200 psig)	4 5	B	CA3.1	Redundant Instrument	<ul style="list-style-type: none"> PC Potential loss HCTL
RWCU-TI-607	RWCU-P-1A, 1B Discharge Header Temp	4 5	B	CA3.1 CU3.1	Temporary Thermocouples or RPV RTDs RRC-TR-650 RHR-TRS-601	Only accurate if an RRC pump is running and RWCU flow is greater than 50 gpm.

Attachment 8.1, EP Related Important Equipment by EPN

Number: 13.14.11	Use Category: REFERENCE	Major Rev: 012
Title: EP Equipment		Minor Rev: N/A
		Page: 28 of 65

EPN	Noun Name / Description	EP Required Mode	10-007 Category	EAL	Alternate Indication and / or Compensatory Measure	Comments
SEIS-SS-1	Triaxial Acceleration Seismic Switch	1 2 3 4 5 def	A1	HU2.1	Establish periodic monitoring of H13 P823 (Board L red lights). Refer to PPM ABN-Earthquake if full instrumentation is lost.	Refer to EPN-Annunciator P851.S1-5.1: "OPERATING BASIS EARTHQUAKE"
SGT-FT-1A1	SGT A-1 Flow	1 2 3 4 5 def	B	NA	Field Team Results	
SGT-FT-1A2	SGT A-2 Flow	1 2 3 4 5 def	B	NA	Field Team Results	
SGT-FT-1B1	SGT B-1 Flow	1 2 3 4 5 def	B	NA	Field Team Results	
SGT-FT-1B2	SGT B-2 Flow	1 2 3 4 5 def	B	NA	Field Team Results	

Number: 13.14.11	Use Category: REFERENCE	Major Rev: 012
Title: EP Equipment		Minor Rev: N/A
		Page: 29 of 65

EPN	Noun Name / Description	EP Required Mode	10-007 Category	EAL	Alternate Indication and / or Compensatory Measure	Comments
SOFT-TECH-ECN	Electronic CNF on LAN	1 2 3 4 5 def	B	NA	Form 24075	
SOFT-TECH-EDNA	eDNA Application Service	1 2 3 4 5 def	B	NA	eDNA Real Time Client or PDIS	
Dose Software	Emergency Dose Projection System	1 2 3 4 5 def	B	RA1.1 RS1.1 RG1.1	Redundant dose projection station or Table 3 of PPM 13.1.1	
SPTM-TI-5	Suppression Pool Avg Temp	1 2 3	B	MA3.1 MU3.1 MS6.1	Redundant instrument	<ul style="list-style-type: none"> HCTL PC Potential Loss
SW-RIS-604 SW-RIS-605	RHR-HX-1A/B Outlet Radiation (0.1-1,000,000 CPS)	1 2 3 4 5 def	A1	RU1.1	Perform grab sample every 12 hours and analyze for radioactivity	See PPM 1.10.1
TDAS-SOFT-PDIS	Plant Data Information System (Control Room)	1 2 3 4 5 def	B	NA	Control Room instruments	
TEA-FT-13	TG Building Elevated Release Air Flow	1 2 3 4 5 def	A1	NA	Refer to ODCM 6.1.2.D	Alternate Method per PPM 13.8.1
TEA-RIS-13	Turbine Building Exhaust	1 2 3 4 5 def	A1	RG1.1 RS1.1 RA1.1 RU1.1	Notify Chemistry to set up Sample Cart (Frisker in a Brick) per 12.5.35B	Refer to PPM 13.8.1 Attachment 7.6 for converting frisker readings (in cpm) to equivalent TEA-RIS-13 readings (in µCi/cc). Sample cart is an Alternate METHOD.

Attachment 8.1, EP Related Important Equipment by EPN

Number: 13.14.11	Use Category: REFERENCE	Major Rev: 012
Title: EP Equipment		Minor Rev: N/A
		Page: 30 of 65

EPN	Noun Name / Description	EP Required Mode	10-007 Category	EAL	Alternate Indication and / or Compensatory Measure	Comments
TSC-CP-RAD/1	TSC Radiation Monitoring Rack	1 2 3 4 5 def	A2	NA	Notify the TSC EP Planner. Establish periodic radiological monitoring of the TSC. If a FAZ occurs, consider relocating the TSC to the Main Control Room.	
TSC-FN-21	TSC Mechanical Equipment Room 1-3 CFM Sample Pump	1 2 3 4 5 def	A2	NA	Notify the TSC EP Planner. Establish periodic radiological monitoring of the TSC. If a FAZ occurs, consider relocating the TSC to the Main Control Room.	
TSC-RE-1A	TSC Airborne Radiation Detector - Particulate	1 2 3 4 5 def	A2	NA	Notify the TSC EP Planner. Establish periodic radiological monitoring of the TSC. If a FAZ occurs, consider relocating the TSC to the Main Control Room.	
TSC-RE-1B	TSC Airborne Radiation Detector - Iodine	1 2 3 4 5 def	A2	NA	Notify the TSC EP Planner. Establish periodic radiological monitoring of the TSC. If a FAZ occurs, consider relocating the TSC to the Main Control Room.	
TSC-RE-1C	TSC Airborne Radiation Detector -- Noble Gas	1 2 3 4 5 def	A2	NA	Notify the TSC EP Planner. Establish periodic radiological monitoring of the TSC. If a FAZ occurs, consider relocating the TSC to the Main Control Room.	
TSC-RIS-1A	TSC Airborne Radiation Monitor - Particulate	1 2 3 4 5 def	A2	NA	Notify the TSC EP Planner. Establish periodic radiological monitoring of the TSC. If a FAZ occurs, consider relocating the TSC to the Main Control Room.	
TSC-RIS-1B	TSC Airborne Radiation Monitor - Iodine	1 2 3 4 5 def	A2	NA	Notify the TSC EP Planner. Establish periodic radiological monitoring of the TSC. If a FAZ occurs, consider relocating the TSC to the Main Control Room.	

Attachment 8.1, EP Related Important Equipment by EPN

Number: 13.14.11	Use Category: REFERENCE	Major Rev: 012
Title: EP Equipment		Minor Rev: N/A
		Page: 31 of 65

EPN	Noun Name / Description	EP Required Mode	10-007 Category	EAL	Alternate Indication and / or Compensatory Measure	Comments
TSC-RIS-1C	TSC Airborne Radiation Monitor – Noble Gas	1 2 3 4 5 def	A2	NA	Notify the TSC EP Planner. Establish periodic radiological monitoring of the TSC. If a FAZ occurs, consider relocating the TSC to the Main Control Room.	
TSC-RR-1	TSC Airborne Radiation Monitor Recorder	1 2 3 4 5 def	A2	NA	Notify the TSC EP Planner. Establish periodic radiological monitoring of the TSC. If a FAZ occurs, consider relocating the TSC to the Main Control Room.	
TSW-RIS-5	Ratemeter-Plant Serv Water Sample Rack TSW-SR-34	1 2 3 4 5 def	A1	RU1.1	Perform grab sample once per shift	See PPM 1.10.1
WEA-RIS-14	Rad Waste Building Exhaust	1 2 3 4 5 def	A1	RG1.1 RS1.1 RA1.1 RU1.1	Notify Chemistry to set up Sample Cart (Frisker in a brick) per PPM 12.5.37.	Refer to PPM 13.8.1 Attachment 7.6 for converting frisker readings (in cpm) to equivalent WEA-RIS-14 readings (in $\mu\text{Ci/cc}$). Sample cart is an Alternate METHOD.
WEA-SUM-1	RW Bldg Exhaust Stack Air Flow	1 2 3 4 5 def	A2	NA	Refer to ODCM 6.1.2.D	Alternate Method

END

Number: 13.14.11	Use Category: REFERENCE	Major Rev: 012
Title: EP Equipment		Minor Rev: N/A
		Page: 32 of 65

EP RELATED IMPORTANT EQUIPMENT BY FUNCTION

<u>EPN</u>	<u>Noun Name / Description</u>	<u>EP Required Mode</u>	<u>INPO 10-007 Category</u>	<u>EAL</u>	<u>Alternate Indication and / or Compensatory Measure</u>	<u>Comments</u>
N/A (Alt. EOF)	Emergency Response Facility Function – Alternate EOF	1 2 3 4 5 def	A2	NA	As determined by Emergency Preparedness	See PPM 1.10.1 Emergency Preparedness is to be informed prior to ANY maintenance activity in this center.
	Dose Projection Software	1 2 3 4 5 def	B	RG1.1 RS1.1 RA1.1	Perform dose projections in other centers	Stand alone software installed on selected individual computers EAL Table 3
	Inter Facility Communications	1 2 3 4 5 def				
	Dedicated X300 and x500 Circuits		B	NA	Dial-Up Line	
	Ring down Line		B	NA	Commercial Line	
	Commercial Line		B	NA	Satellite Phone	No satellite phone assigned to the Alternate EOF. One available in the JIC.
	FAX		B	NA	Scan documents to email	
	Field Team Radios		B	NA	Cell Phone	Field Teams would be dispatched to the plant to retrieve Field Team vehicles
	Ventilation	1 2 3 4 5 def	B	NA	Initiate work request Contact EOF Planner Establish alternate cooling/heating as needed	

Attachment 8.2, EP Related Important Equipment by Function

Number: 13.14.11	Use Category: REFERENCE	Major Rev: 012
Title: EP Equipment		Minor Rev: N/A
		Page: 33 of 65

EPN	Noun Name / Description	EP Required Mode	INPO 10-007 Category	EAL	Alternate Indication and /or Compensatory Measure	Comments
NA (Control Room)	Emergency Response Facility Function – Control Room	1 2 3 4 5 def	B	NA	Remote Shutdown Room	
	AC Power	1 2 3 4 5 def	B	NA	PPM 5.6.1 – Station Blackout	
	Dose Projection Software	1 2 3 4 5 def	B	RG1.1 RS1.1 RA1.1	Perform dose projections in other centers	Standalone software installed on selected individual computers EAL Table 3
	Inter Facility Communications	1 2 3 4 5 def				
	Dedicated X300 and x500 Circuits		B	NA	ABN-Communication Dial-Up Line	
	Dial-Up Line		B	NA	ABN-Communication Commercial Line	
	Ring down Line		B	NA	ABN-Communication Commercial Line	
	Commercial Line		B	NA	ABN-Communication Satellite Phone	Satellite phone stored in TSC
	FAX		B	NA	Scan documents to email	
	Repair Team Radios		B	NA	Plant phone system	
	Ventilation	1 2 3 4 5 def	B	NA	ABN-HVAC	

Number: 13.14.11	Use Category: REFERENCE	Major Rev: 012
Title: EP Equipment		Minor Rev: N/A
		Page: 34 of 65

EPN	Noun Name / Description	EP Required Mode	INPO 10-007 Category	EAL	Alternate Indication and / or Compensatory Measure	Comments
NA (EOF)	Emergency Response Facility Function – EOF	1 2 3 4 5 def	B	NA	Alternate EOF	See PPM 1.10.1 Emergency Preparedness is to be informed prior to ANY maintenance activity in this center.
	AC Power	1 2 3 4 5 def	B	NA	Diesel (Bldg 34 DG)	115 KV Line supplies power to Kootenai – EOF. Diesel (Bldg 34 DG) supplies EOF Backup Power for RED Outlets and Emergency Lighting
	Dose Projection Software	1 2 3 4 5 def	B	RG1.1 RS1.1 RA1.1	Perform dose projections in other centers	Standalone software installed on selected individual computers EAL Table 3
	Health Physics Center Decontamination Shower	1 2 3 4 5 def	B	NA	Use decontamination facilities located in-plant (RW 487') and at ENOC	
	Health Physics Center Receiving Area		B	NA	Contact EOF Planner Initiate work request	ERO to implement alternate location as defined by 13.11.7
	Inter Facility Communications	1 2 3 4 5 def				
	Dedicated X300 and x500 Circuits		B	NA	Dial-Up Line	
	Dial-Up Line		B	NA	Commercial Line	
	Ring down Line		B	NA	Commercial Line	
	Commercial Line		B	NA	Satellite Phone	
	FAX		B	NA	Scan documents to email	
	Field Team Radios		B	NA	Cell Phone	

Attachment 8.2, EP Related Important Equipment by Function

Number: 13.14.11	Use Category: REFERENCE	Major Rev: 012
Title: EP Equipment		Minor Rev: N/A
		Page: 35 of 65

EPN	Noun Name / Description	EP Required Mode						INPO 10-007 Category	EAL	Alternate Indication and / or Compensatory Measure	Comments
NA (EOF)	Ventilation	1	2	3	4	5	def	B	NA	Contact facilities and confirm Kootenai HVAC Establish alternate cooling/heating as needed	EOF confirms habitability upon reporting and relocates if necessary.
	Air Handling Unit 1							A2	NA	Verify normal Kootenai HVAC available Relocate to Alternate EOF if necessary	AHU-1 Backup to normal Kootenai HVAC EOF HVAC Test performed quarterly by MWO 00GCF3
	Fan SF-3							A2	NA	Verify normal Kootenai HVAC available Relocate to Alternate EOF if necessary	Supply Fan 3
	Radiation Monitor, Intake Air							A2	NA	Confirm no release in progress Shift to filtered air if release in progress	Only required if center is activated.
	Radiation Monitor, Return Air							A2	NA	Confirm no release in progress Shift to filtered air if release in progress	Only required if center is activated.

Number: 13.14.11	Use Category: REFERENCE	Major Rev: 012
Title: EP Equipment		Minor Rev: N/A
		Page: 36 of 65

EPN	Noun Name / Description	EP Required Mode	INPO 10-007 Category	EAL	Alternate Indication and / or Compensatory Measure	Comments
NA (JIC)	Emergency Response Facility Function - JIC	1 2 3 4 5 def	A2	NA	Notify JIC Planner As determined by Emergency Preparedness	See PPM 1.10.1 Emergency Preparedness is to be informed prior to ANY maintenance activity in this center.
	AC Power	1 2 3 4 5 def	B	NA	Diesel backup power	
	Inter Facility Communications	1 2 3 4 5 def				
	Dedicated X300 and x500 Circuits		B	NA	Dial-Up Line	
	Dial-Up Line		B	NA	Commercial Line	
	Ring down Line		B	NA	Commercial Line	
	Commercial Line		B	NA	Satellite Phone	
	FAX		B	NA	Scan documents to email	
	Ventilation	1 2 3 4 5 def	B	NA	Initiate work request Contact JIC Planner Establish alternate cooling/heating as needed	
	News Conference Capability – Walkley Rm	1 2 3 4 5 def	B	NA	MPF Auditorium Skamania Room	

Number: 13.14.11	Use Category: REFERENCE	Major Rev: 012
Title: EP Equipment		Minor Rev: N/A
		Page: 37 of 65

EPN	Noun Name / Description	EP Required Mode	INPO 10-007 Category	EAL	Alternate Indication and / or Compensatory Measure	Comments
NA (OSC)	Emergency Response Facility Function – OSC	1 2 3 4 5 def	A2	NA	Notify OSC Planner	See PPM 1.10.1
					Relocate the OSC as per "OSC Manager Checklist" (Form 26522)	Emergency Preparedness is to be informed prior to ANY maintenance activity in this center.
	AC Power	1 2 3 4 5 def	B	NA	Relocate the OSC as per "OSC Manager Checklist" (Form 26522)	
	Inter Facility Communications	1 2 3 4 5 def	B	NA		
	Dedicated X300 and x500 Circuits				Dial-Up Line	
	Dial-Up Line				Commercial Line	
	Ring down Line				Commercial Line	
	Commercial Line				None	OSC has no Emergency Response Function that requires commercial lines.
	FAX				Scan documents to email	
	Repair Team Radios				Plant phones	
	TSC Building Ventilation	1 2 3 4 5 def	B	NA	Initiate work request	OSC confirms habitability upon reporting and relocates if necessary
					Contact OSC Planner Establish alternate cooling/heating as needed	

Number: 13.14.11	Use Category: REFERENCE	Major Rev: 012
Title: EP Equipment		Minor Rev: N/A
		Page: 38 of 65

EPN	Noun Name / Description	EP Required Mode	INPO 10-007 Category	EAL	Alternate Indication and / or Compensatory Measure	Comments						
NA (TSC)	Emergency Response Facility Function – TSC	<table><tr><td>1</td><td>2</td><td>3</td><td>4</td><td>5</td><td>def</td></tr></table>	1	2	3	4	5	def	B	NA	Notify OSC Planner Relocate the TSC as per "TSC Manager Checklist" (Form 26506)	See PPM 1.10.1 Emergency Preparedness is to be informed prior to ANY maintenance activity in this center.
	1	2	3	4	5	def						
	AC Power	<table><tr><td>1</td><td>2</td><td>3</td><td>4</td><td>5</td><td>def</td></tr></table>	1	2	3	4	5	def	B	NA	Relocate the TSC as per "TSC Manager Checklist" (Form 26506)	See Attachment 8.1
	1	2	3	4	5	def						
	Dose Projection Software	<table><tr><td>1</td><td>2</td><td>3</td><td>4</td><td>5</td><td>def</td></tr></table>	1	2	3	4	5	def	B	RG1.1 RS1.1 RA1.1	Perform dose projections in other centers	Standalone software installed on selected individual computers EAL Table 3
	1	2	3	4	5	def						
	Inter Facility Communications	<table><tr><td>1</td><td>2</td><td>3</td><td>4</td><td>5</td><td>def</td></tr></table>	1	2	3	4	5	def	B	NA		
	1	2	3	4	5	def						
	Dedicated X300 and x500 Circuits	Dial-Up Line										
Dial-Up Line	Commercial Line											
Ring down Line	Commercial Line											
Commercial Line	Satellite Phone											
FAX	Scan documents to email											
Ventilation	<table><tr><td>1</td><td>2</td><td>3</td><td>4</td><td>5</td><td>def</td></tr></table>	1	2	3	4	5	def	B	NA	Initiate work request Contact TSC Planner Establish alternate cooling/heating as needed	TSC confirms habitability upon reporting and relocates if necessary See Attachment 8.1	
1	2	3	4	5	def							

Attachment 8.2, EP Related Important Equipment by Function

Number: 13.14.11	Use Category: REFERENCE	Major Rev: 012
Title: EP Equipment		Minor Rev: N/A
		Page: 39 of 65

EPN	Noun Name / Description	EP Required Mode	INPO 10-007 Category	EAL	Alternate Indication and / or Compensatory Measure	Comments
NA (ERO Notification)	ERO Notification Function	1 2 3 4 5 def				See PPM 1.10.1
	Auto-Dialer		B	NA	Planner Call-Tree	Required only when Radio Paging System unavailable
	Normal Power		B	NA	Backup Generator	Also powers company phone system
	Backup Generator		B	NA	Confirm Normal Power Contact Emergency Preparedness	Required only when normal power unavailable Backup generator known as TEL-COM-GEN, 30-209, or DG-2(TEC)
	Cellular Phone		B	NA	Commercial Line	
	Commercial Line		B	NA	Cellular Phone	
	Radio Paging		B	NA	Manual Activation OR Auto Dialer	Radio paging is the primary method of ERO notification.
	Public Address		B	NA	Make PA Announcement from other center.	
NA (NRC Notification)	NRC Notification Function	1 2 3 4 5 def	B	NA		See PPM 1.10.1
	ENS Line				Commercial NRC HOO Line	
	HPN Line				Commercial Line	
	ERDS				Verbally via ENS call	
	FTS 2001				Commercial Line	

Number: 13.14.11	Use Category: REFERENCE	Major Rev: 012
Title: EP Equipment		Minor Rev: N/A
		Page: 40 of 65

EPN	Noun Name / Description	EP Required Mode						INPO 10-007 Category	EAL	Alternate Indication and / or Compensatory Measure	Comments
NA (Offsite Notification)	Offsite Notification Function	1	2	3	4	5	def	B	NA		See PPM 1.10.1
	CRASH Line									Dial-Up Line	
	Dial-Up Line									Commercial Line	
	Commercial Line									Alternate phone switch (377, 372, 375)	
	Normal Power									Backup Generator	Also powers company phone system
	Backup Generator									Confirm Normal Power	Backup generator known as TEL-COM-GEN, 30-209, or DG-2(TEC)
										Contact Emergency Preparedness	Required only when normal power unavailable
	Radio									Alternate channels	
	LERN									Commercial Line	
	SCAN									Commercial Line	
	FAX									CRASH Line Commercial Fax	

Number: 13.14.11	Use Category: REFERENCE	Major Rev: 012
Title: EP Equipment		Minor Rev: N/A
		Page: 41 of 65

<u>EPN</u>	<u>Noun Name / Description</u>	<u>EP Required Mode</u>	<u>INPO 10-007 Category</u>	<u>EAL</u>	<u>Alternate Indication and / or Compensatory Measure</u>	<u>Comments</u>
NA	Site Evacuation Notification Function	1 2 3 4 5 def				See PPM 1.10.1
	CGS Site Evacuation Siren System		B	NA	Public Address or Area Sweep	
	HNES Units				Area Sweep	
NA	Pulic Alert & Notification System (ANS) Function	1 2 3 4 5 def				See PPM 1.10.1
	Sirens (<u>Primary Public ANS</u>)		B	NA	For siren system loss: Confirm functionality of ETNS system.	For single siren loss: Contact IS to confirm functionality of adjacent sirens
	Emergency Telephone Notification System (ETNS) (<u>Backup Public ANS</u>)				Confirm functionality of Public ANS Siren system.	Contact County EM Staff and ETNS vendor for resolution as needed
	Tone Alert Radios (TARs)**				KONA AM/FM Radio KORD FM Radio	**TARs are in very limited use within the CGS 10-Mile Emergency Planning Zone. See CGS ANS Design Report for details.

END

Number: 13.14.11	Use Category: REFERENCE	Major Rev: 012
Title: EP Equipment		Minor Rev: N/A
		Page: 42 of 65

EP RELATED IMPORTANT EQUIPMENT - TSC

<u>EPN</u>	<u>Noun Name / Description</u>	<u>EP Required Mode</u>	<u>INPO 10-007 Equipment Category</u>	<u>EAL</u>	<u>Alternate Indication and / or Compensatory Measure</u>	<u>Comments</u>
NA (TSC)	Computers	1 2 3 4 5 def	B	NA	Contact IS	
	Chemistry / Effluent					
	Engineer 1					
	Engineer 2					
	Engineer 3					
	Information Coordinator					
	NRC Liaison					
	NRC Computer					
	Print station w/ large monitor				PORTAL J or hard copies from TSC Library	CPU and Monitor
NA (TSC)	Printers/Copiers	1 2 3 4 5 def	B	NA	Contact IS	
	Print Station Plotter					
	Printer, Engineering Area					
	Lan Printer/Copy Machine				Contact Vendor	Also for OSC
NA (TSC)	Fax Machines	1 2 3 4 5 def	B	NA	Contact IS	Also for OSC
	Dedicated					
	Commercial					

Number: 13.14.11	Use Category: REFERENCE	Major Rev: 012
Title: EP Equipment		Minor Rev: N/A
		Page: 43 of 65

<u>EPN</u>	<u>Noun Name / Description</u>	<u>EP Required Mode</u>	<u>INPO 10-007 Equipment Category</u>	<u>EAL</u>	<u>Alternate Indication and / or Compensatory Measure</u>	<u>Comments</u>
NA (TSC)	Headset, Information Coordinator	1 2 3 4 5 def	B	NA	Contact IS	
NA (TSC)	Telephone	1 2 3 4 5 def	B	NA	Contact IS	Inventoried / tested by Telecom
	TSC Manager					
	Operations Manager					
	Radiation Protection Manager					
	Technical Manager					
	Plant/NRC Liaison					
	Administrative Manager					
	Chemistry/Effluent Manager					
	Maintenance Manager					
	Plant Technical Staff					
	Plant Technical Staff					
	Plant Technical Staff					
	Plant Technical Staff					
	Security Liaison					
	Admin Support Staff					
	Computer Engineer					

Attachment 8.3, EP Related Important Equipment – TSC

Number: 13.14.11	Use Category: REFERENCE	Major Rev: 012
Title: EP Equipment		Minor Rev: N/A
		Page: 44 of 65

<u>EPN</u>	<u>Noun Name / Description</u>	<u>EP Required Mode</u>	<u>INPO 10-007 Equipment Category</u>	<u>EAL</u>	<u>Alternate Indication and /or Compensatory Measure</u>	<u>Comments</u>
NA (TSC)	NRC Emergency Notification System (ENS)	1 2 3 4 5 def	B	NA	Contact IS	Headset and phone
NA (TSC)	NRC Communications	1 2 3 4 5 def	B	NA	Contact IS	Inventoried / tested by Telecom
	NRC Health Physics Network (HPN)					
	NRC Management Counterpart Link (MCL)					
	NRC Rad Safety Coordinator					
	NRC Reactor Safety Counterpart Link (RSCL)					
	NRC Reactor Safety Ops Coordinator					
	NRC Reactor Safety Specialist					
	NRC Senior Resident Inspector					
	NRC Protective Measures Counterpart Link (PMCL)					

Attachment 8.3, EP Related Important Equipment – TSC

Number: 13.14.11	Use Category: REFERENCE	Major Rev: 012
Title: EP Equipment		Minor Rev: N/A
		Page: 45 of 65

<u>EPN</u>	<u>Noun Name / Description</u>	<u>EP Required Mode</u>	<u>INPO 10-007 Equipment Category</u>	<u>EAL</u>	<u>Alternate Indication and / or Compensatory Measure</u>	<u>Comments</u>
NA (TSC)	Radios	1 2 3 4 5 def	B	NA	Contact IS	Inventoried and tested by Telecom There are 2 more base stations for OSC (total of 4)
	Base Station (x2)					
	On-Site Channels					
	Area Wide channels					
NA (TSC)	Flat Screen Monitors	1 2 3 4 5 def	B	NA	White Board	

END

Number: 13.14.11	Use Category: REFERENCE	Major Rev: 012
Title: EP Equipment		Minor Rev: N/A
		Page: 46 of 65

EP RELATED IMPORTANT EQUIPMENT - OSC

<u>EPN</u>	<u>Noun Name / Description</u>	<u>EP Required Mode</u>	<u>INPO 10-007 Equipment Category</u>	<u>EAL</u>	<u>Alternate Indication and / or Compensatory Measure</u>	<u>Comments</u>
NA (OSC)	Computers	1 2 3 4 5 def	B	NA	Contact IS	Tested by EP, Maintained by IT
	HP Lead					
	Repair Team Coordinator / Manager					
	Electrical Craft Lead					
	I&C Craft Lead					
	Mechanical Lead					
NA (OSC)	Repair Team Coordinator Headset	1 2 3 4 5 def	B	NA	Contact IS	
NA (OSC)	Telephones	1 2 3 4 5 def	B	NA	Contact IS	Inventoried and tested by Telecom
	Manager					
	HP Lead					
	Repair Team Coordinator					
	Team Tracker					
	Electrical Craft Lead					
	I&C Craft Lead					
	Mechanical Craft Lead					
	Craft Area					

Number: 13.14.11	Use Category: REFERENCE	Major Rev: 012
Title: EP Equipment		Minor Rev: N/A
		Page: 47 of 65

<u>EPN</u>	<u>Noun Name / Description</u>	<u>EP Required Mode</u>	<u>INPO 10-007 Equipment Category</u>	<u>EAL</u>	<u>Alternate Indication and / or Compensatory Measure</u>	<u>Comments</u>
NA (OSC)	Radios	1 2 3 4 5 def	B	NA	Contact IS	Inventoried and tested by Telecom There are 2 more base stations for TSC (total of 4)
	Base Station (x2)					
	On-Site Channels					
	Area Wide channels					
	Repair Team hand held (x6)					

END

Number: 13.14.11	Use Category: REFERENCE	Major Rev: 012
Title: EP Equipment		Minor Rev: N/A
		Page: 48 of 65

EP RELATED IMPORTANT EQUIPMENT – EOF (BUILDING 34)

<u>EPN</u>	<u>Noun Name / Description</u>	<u>EP Required Mode</u>	<u>INPO 10-007 Equipment Category</u>	<u>EAL</u>	<u>Alternate Indication and / or Compensatory Measure</u>	<u>Comments</u>
NA (EOF)	Computers	1 2 3 4 5 def	B	NA	Contact IS	Tested by EP, Maintained by IT
	Asst EOF Manager					
	DOH Dose Projection					
	Energy Northwest Dose Projection					
	EOF PIO					
	Information Coordinator (x2)					
	INPO Network					
	PDIS Analyst					
	Radiation Detection Engineer					
	Telecom Manager					
NA (EOF)	Emergency Diesel Generator	1 2 3 4 5 def	A2		Confirm 115 kV available Relocate to Alternate EOF.	DG Load Test performed monthly by MWO #00GBK0 DG Switch Test performed quarterly by MWO #00GBK2

Number: 13.14.11	Use Category: REFERENCE	Major Rev: 012
Title: EP Equipment		Minor Rev: N/A
		Page: 49 of 65

<u>EPN</u>	<u>Noun Name / Description</u>	<u>EP Required Mode</u>	<u>INPO 10-007 Equipment Category</u>	<u>EAL</u>	<u>Alternate Indication and / or Compensatory Measure</u>	<u>Comments</u>
NA (EOF)	Fax	1 2 3 4 5 def	B	NA	Contact IS	Inventoried / tested by Telecom - EP
	CNF					
	Dialogic					
	Incoming					
	Outgoing					
NA (EOF)	Health Physics Center Vehicle Field Team Air Sample Kit (x3)	1 2 3 4 5 def	B	NA	Kit at Alternate EOF Contact HP to provide additional equipment	Inventoried/tested by Radiation Protection quarterly – MWO 01050707
NA (EOF)	Health Physics Center Vehicle Field Team Field Sample Kit (x3)	1 2 3 4 5 def	B	NA	Kit at Alternate EOF Contact HP to provide additional equipment	Inventoried/tested by Radiation Protection quarterly – MWO 01050707
NA (EOF)	Health Physics Center Vehicle Field Team Instrumentation Kit (x3)	1 2 3 4 5 def	B	NA	Kit at Alternate EOF Contact HP to provide additional equipment	Inventoried/tested by Radiation Protection quarterly – MWO 01050707
NA (EOF)	Health Physics Center Vehicle Field Team Protective Clothing Kit (x3)	1 2 3 4 5 def	B	NA	Kit at Alternate EOF Contact HP to provide additional equipment	Inventoried/tested by Radiation Protection quarterly – MWO 01050707
NA (EOF)	Printers	1 2 3 4 5 def	B	NA	Contact IS	Tested by EP
	HP Dose Projection					
	INPO Network Coordinator					
	Laser 24					
	Laser 147					
NA (EOF)	Radiation Monitor, Victoreen VAMP	1 2 3 4 5 def	B	NA	Portable Monitor	Tested / Calibrated by RP

Attachment 8.5, EP Related Important Equipment – EOF (Building 34)

Number: 13.14.11	Use Category: REFERENCE	Major Rev: 012
Title: EP Equipment		Minor Rev: N/A
		Page: 50 of 65

<u>EPN</u>	<u>Noun Name / Description</u>	<u>EP Required Mode</u>	<u>INPO 10-007 Equipment Category</u>	<u>EAL</u>	<u>Alternate Indication and / or Compensatory Measure</u>	<u>Comments</u>
NA (EOF)	Radios	1 2 3 4 5 def	B	NA	Contact IS	Inventoried and maintained by Telecom EOF Radio inventory
	Field Team Console					
	Field Team Monitoring					
	Field Team Vehicle EN1					
	Field Team Vehicle EN2					
	Field Team Vehicle EN3					
	Portable Field Team (x6)					
	NOAA Weather					
	WA State Field Team Console					
	Security Area Wide					Call sign KZI509
	DOE Patrol					Call sign Station 51
	DOE Safety Console					Call sign Station 51
	Law Enforcement Radio Network					Call sign KOM785

Number: 13.14.11	Use Category: REFERENCE	Major Rev: 012
Title: EP Equipment		Minor Rev: N/A
		Page: 51 of 65

<u>EPN</u>	<u>Noun Name / Description</u>	<u>EP Required Mode</u>	<u>INPO 10-007 Equipment Category</u>	<u>EAL</u>	<u>Alternate Indication and / or Compensatory Measure</u>	<u>Comments</u>
NA (EOF)	Telephones	1 2 3 4 5 def	B	NA	Contact IS	Inventoried / tested by Telecom
	Admin Support					
	Admin Support					
	Assistant Manager					
	Benton County Emergency Management					
	BPA Representative					
	FEMA Representative					
	Decon Showers					
	Dept. of Energy Representative					
	Dept. of Health Field Team Coordinator					
	Dept. of Health Protective Action Decision Group Liaison					
	Dose Projection HP					
	Dose Projection HP					

Number: 13.14.11	Use Category: REFERENCE	Major Rev: 012
Title: EP Equipment		Minor Rev: N/A
		Page: 52 of 65

<u>EPN</u>	<u>Noun Name / Description</u>	<u>EP Required Mode</u>	<u>INPO 10-007 Equipment Category</u>	<u>EAL</u>	<u>Alternate Indication and / or Compensatory Measure</u>	<u>Comments</u>
NA (EOF)	Engineering General Area	1 2 3 4 5 def	B	NA	Contact IS	Inventoried / tested by Telecom
	Engineering Manager					
	Engineering Support					
	Field Team Coordinator					
	Field Team Dispatcher					
	Franklin County Emergency Management					
	Health Physics Center					
	INPO Network Coordinator					
	Instrument Calibration Lab					
	Manager					
	Manpower Scheduler					
	NRC Deputy Site Team Director					
	NRC Deputy Protective Measures Branch Leader					

Attachment 8.5, EP Related Important Equipment – EOF (Building 34)

Number: 13.14.11	Use Category: REFERENCE	Major Rev: 012
Title: EP Equipment		Minor Rev: N/A
		Page: 53 of 65

<u>EPN</u>	<u>Noun Name / Description</u>	<u>EP Required Mode</u>	<u>INPO 10-007 Equipment Category</u>	<u>EAL</u>	<u>Alternate Indication and / or Compensatory Measure</u>	<u>Comments</u>
NA (EOF)	NRC Chronology Documentation Branch Leader	1 2 3 4 5 def	B	NA	Contact IS	Inventoried / tested by Telecom
	NRC Dose Assessor					
	NRC Dose Assessor Modem					
	NRC ENS					
	NRC Information Technology Specialist					
	NRC Liaison Leader					
	NRC Management Counterpart Link					
	NRC Protective Measures Counterpart Link					
	NRC Protective Measures Branch Leader					
	NRC Chronology Documentation Communicator					
	NRC Deputy Technical Assessment Branch Leader					

Attachment 8.5, EP Related Important Equipment – EOF (Building 34)

Number: 13.14.11	Use Category: REFERENCE	Major Rev: 012
Title: EP Equipment		Minor Rev: N/A
		Page: 54 of 65

<u>EPN</u>	<u>Noun Name / Description</u>	<u>EP Required Mode</u>	<u>INPO 10-007 Equipment Category</u>	<u>EAL</u>	<u>Alternate Indication and / or Compensatory Measure</u>	<u>Comments</u>
NA (EOF)	NRC Deputy Technical Assessment Branch Leader	1 2 3 4 5 def	B	NA	Contact IS	Inventoried / tested by Telecom
	NRC Deputy Technical Assessment Branch Leader Modem					
	NRC Reactor Safety Counterpart Link (RSCL)					
	NRC Response Branch Leader					
	NRC Response Branch Leader Modem					
	NRC Site Team Director					
	NRC Technical Assessment Specialist					
	NRC Technical Assessment Branch Leader					
	Oregon State Liaison					
	Oregon Radiological Dose Analyst					
	PDIS Analyst					

Attachment 8.5, EP Related Important Equipment – EOF (Building 34)

Number: 13.14.11	Use Category: REFERENCE	Major Rev: 012
Title: EP Equipment		Minor Rev: N/A
		Page: 55 of 65

<u>EPN</u>	<u>Noun Name / Description</u>	<u>EP Required Mode</u>	<u>INPO 10-007 Equipment Category</u>	<u>EAL</u>	<u>Alternate Indication and / or Compensatory Measure</u>	<u>Comments</u>
NA (EOF)	Public Information Officer (PIO)	1 2 3 4 5 def	B	NA	Contact IS	Inventoried / tested by Telecom
	Radiation Detections Systems Engineer					
	Radiological Emergency Manager (REM)					
	Respiratory Testing Area					
	Secretary					
	Secretary					
	Security Manager					
	Site Support Manager					
	State/County Liaison					
	Technical Liaison					
	Telecom Manager					
	Washington Dept. of Agriculture					
	Washington State Emergency Management Liaison					
	Washington State DOH Liaison					

Attachment 8.5, EP Related Important Equipment – EOF (Building 34)

Number: 13.14.11	Use Category: REFERENCE	Major Rev: 012
Title: EP Equipment		Minor Rev: N/A
		Page: 56 of 65

<u>EPN</u>	<u>Noun Name / Description</u>	<u>EP Required Mode</u>	<u>INPO 10-007 Equipment Category</u>	<u>EAL</u>	<u>Alternate Indication and /or Compensatory Measure</u>	<u>Comments</u>
NA (EOF)	Vehicles	1 2 3 4 5 def	B	NA	Acquire other ENW vehicle Contact Vehicle Maintenance Contact WA to request DOH supplement	Maintained by CMS – EP verifies operable on a monthly basis
	Field Team EN1					
	Field Team EN2					
	Field Team EN3					
NA (EOF)	Whelen Siren Console, Site Evacuation Siren System	1 2 3 4 5 def	B	NA	Activate from SCC	Inventoried/Tested by Telecom
NA (EOF)	Wireless CRASH phone system	1 2 3 4 5 def	B	NA	Contact IS	Inventoried/Tested by Telecom and EP
NA (EOF)	Overhead Projector (x2)	1 2 3 4 5 def	B	NA	Contact IS	
NA (EOF)	Flat Screen Monitors	1 2 3 4 5 def	B	NA	Contact IS	

END

Attachment 8.5, EP Related Important Equipment – EOF (Building 34)

Number: 13.14.11	Use Category: REFERENCE	Major Rev: 012
Title: EP Equipment		Minor Rev: N/A
		Page: 57 of 65

EP RELATED IMPORTANT EQUIPMENT – ALTERNATE EOF

<u>EPN</u>	<u>Noun Name / Description</u>	<u>EP Required Mode</u>	<u>INPO 10-007 Equipment Category</u>	<u>EAL</u>	<u>Alternate Indication and / or Compensatory Measure</u>	<u>Comments</u>
NA (Alt. EOF)	Radios	1 2 3 4 5 def	B	NA		
	B.5.b Radios				Cellular phones	
	Field Team Base Station				Cellular phones	
NA (Alt. EOF)	Fax	1 2 3 4 5 def	B			Inventoried/tested by Telecommunications
NA (Alt. EOF)	Health Physics Center Vehicle Field Team Air Sampling Kit	1 2 3 4 5 def	B	NA	Kit at EOF Contact HP to provide additional equipment	Inventoried/tested by Radiation Protection quarterly – MWO 01050707
	Health Physics Center Vehicle Field Team Field Sample Kit					
	Health Physics Center Vehicle Field Team Instrumentation Kit					
NA (Alt. EOF)	Telephones	1 2 3 4 5 def	B	NA	Contact IS	Inventoried / tested by Telecom
	Assistant Manager					
	Benton County Commissioner					
	Dept. of Energy Field Team Coordinator					
	Dept. of Energy Field Team Dispatcher					

Number: 13.14.11	Use Category: REFERENCE	Major Rev: 012
Title: EP Equipment		Minor Rev: N/A
		Page: 58 of 65

<u>EPN</u>	<u>Noun Name / Description</u>	<u>EP Required Mode</u>	<u>INPO 10-007 Equipment Category</u>	<u>EAL</u>	<u>Alternate Indication and / or Compensatory Measure</u>	<u>Comments</u>
NA (Alt. EOF)	Dose Projectionist	1 2 3 4 5 def	B	NA	Contact IS	Inventoried / tested by Telecom
	Engineering Manager					
	Manager					
	Secretary					
	Field Team Coordinator					
	Field Team Dispatch					
	Franklin County Commissioner					
	Manpower Scheduler					
	NRC/FEMA					
	NRC Protective Measures Branch Lead					
	NRC Reactor Safety Counterpart Link (RSCL) Communicator					
	NRC Response Coordination Leader					
	NRC Site Team Director					

Number: 13.14.11	Use Category: REFERENCE	Major Rev: 012
Title: EP Equipment		Minor Rev: N/A
		Page: 59 of 65

<u>EPN</u>	<u>Noun Name / Description</u>	<u>EP Required Mode</u>	<u>INPO 10-007 Equipment Category</u>	<u>EAL</u>	<u>Alternate Indication and /or Compensatory Measure</u>	<u>Comments</u>
NA (Alt. EOF)	NRC Technical Assessment Branch Leader	1 2 3 4 5 def	B	NA	Contact IS	Inventoried / tested by Telecom
	Oregon State Liaison					
	REM					
	Site Support Manager					
	Security Manager					
	Technical Liaison					
	Telecom Manager					
	Washington State Representative					
	Washington Department of Health					
NA (Alt. EOF)	Headset	1 2 3 4 5 def	B	NA	Contact IS	Controller and Information Coordinator
NA (Alt. EOF)	Computer, Dose Projection	1 2 3 4 5 def	B	NA	Contact IS	

END

Number: 13.14.11	Use Category: REFERENCE	Major Rev: 012
Title: EP Equipment		Minor Rev: N/A
		Page: 60 of 65

EP RELATED IMPORTANT EQUIPMENT – JIC

<u>EPN</u>	<u>Noun Name / Description</u>	<u>EP Required Mode</u>	<u>INPO 10-007 Equipment Category</u>	<u>EAL</u>	<u>Alternate Indication and / or Compensatory Measure</u>	<u>Comments</u>
NA (JIC)	AM Tuner	1 2 3 4 5 def	B	NA	FM Tuner Internet	
NA (JIC)	Computers	1 2 3 4 5 def	B	NA	Contact IS	Tested by EP, Maintained by IT
	Alternate EOF/ENS					
	AV Walkley Room					
	Benton County PIO					
	Franklin County PIO					
	HP Spokesperson					
	Internet News Monitor					
	JIC Secretary					
	News Release Editor					
	NRC PIL					
	Oregon PIO					
	Phone Team (x8)					
	Rumor Control					
	Technical Spokesperson)					
	Washington PIO)					

Number: 13.14.11	Use Category: REFERENCE	Major Rev: 012
Title: EP Equipment		Minor Rev: N/A
		Page: 61 of 65

<u>EPN</u>	<u>Noun Name / Description</u>	<u>EP Required Mode</u>	<u>INPO 10-007 Equipment Category</u>	<u>EAL</u>	<u>Alternate Indication and / or Compensatory Measure</u>	<u>Comments</u>
NA (JIC)	Copy Machine	1 2 3 4 5 def	B	NA	Contact Vendor	
NA (JIC)	DISH Network Receiver (x2)	1 2 3 4 5 def	B	NA	Contact Vendor	
NA (JIC)	Fax					Inventoried/Tested by Telecom
	Commercial (x2)		B	NA	Contact IS	
	Dedicated (x2)	1 2 3 4 5 def	B	NA	Contact IS	
NA (JIC)	Flat panel displays (5)	1 2 3 4 5 def	B	NA	Contact IS	JIC, Phone Team Room and MPF Lobby
NA (JIC)	FM Tuner	1 2 3 4 5 def	B	NA	AM Tuner Internet	
NA (JIC)	Headset	1 2 3 4 5 def	B	NA	Contact IS	
	Phone Team, (x8)					
	Spokesperson					
NA (JIC)	Printers	1 2 3 4 5 def	B	NA	Contact Vendor	
	PIO Work Area					
	Rumor Control Work Area					
NA (JIC)	Projection Booth AV Equipment and DVR	1 2 3 4 5 def	B	NA	Contact IS	Prox card and booth key located in Support Manager's center desk drawer

Attachment 8.7, EP Related Important Equipment – JIC

Number: 13.14.11	Use Category: REFERENCE	Major Rev: 012
Title: EP Equipment		Minor Rev: N/A
		Page: 62 of 65

<u>EPN</u>	<u>Noun Name / Description</u>	<u>EP Required Mode</u>	<u>INPO 10-007 Equipment Category</u>	<u>EAL</u>	<u>Alternate Indication and /or Compensatory Measure</u>	<u>Comments</u>
NA (JIC)	Telephones	1 2 3 4 5 def	B	NA	Contact IS	Inventoried/Tested by Telecom
	Audio/Visual					
	Benton County Representative					
	Distribution Team Supervisor					
	DOE-RL Representative					
	FEMA Representative					
	Franklin County Representative					
	HP Spokesperson					
	Information Manager					
	Manager					
	Media Phone Team					
	News Release Editor					
	NRC Representative					
	Oregon State Representative					
	Public Phone Team					
	Receptionist					

Attachment 8.7, EP Related Important Equipment – JIC

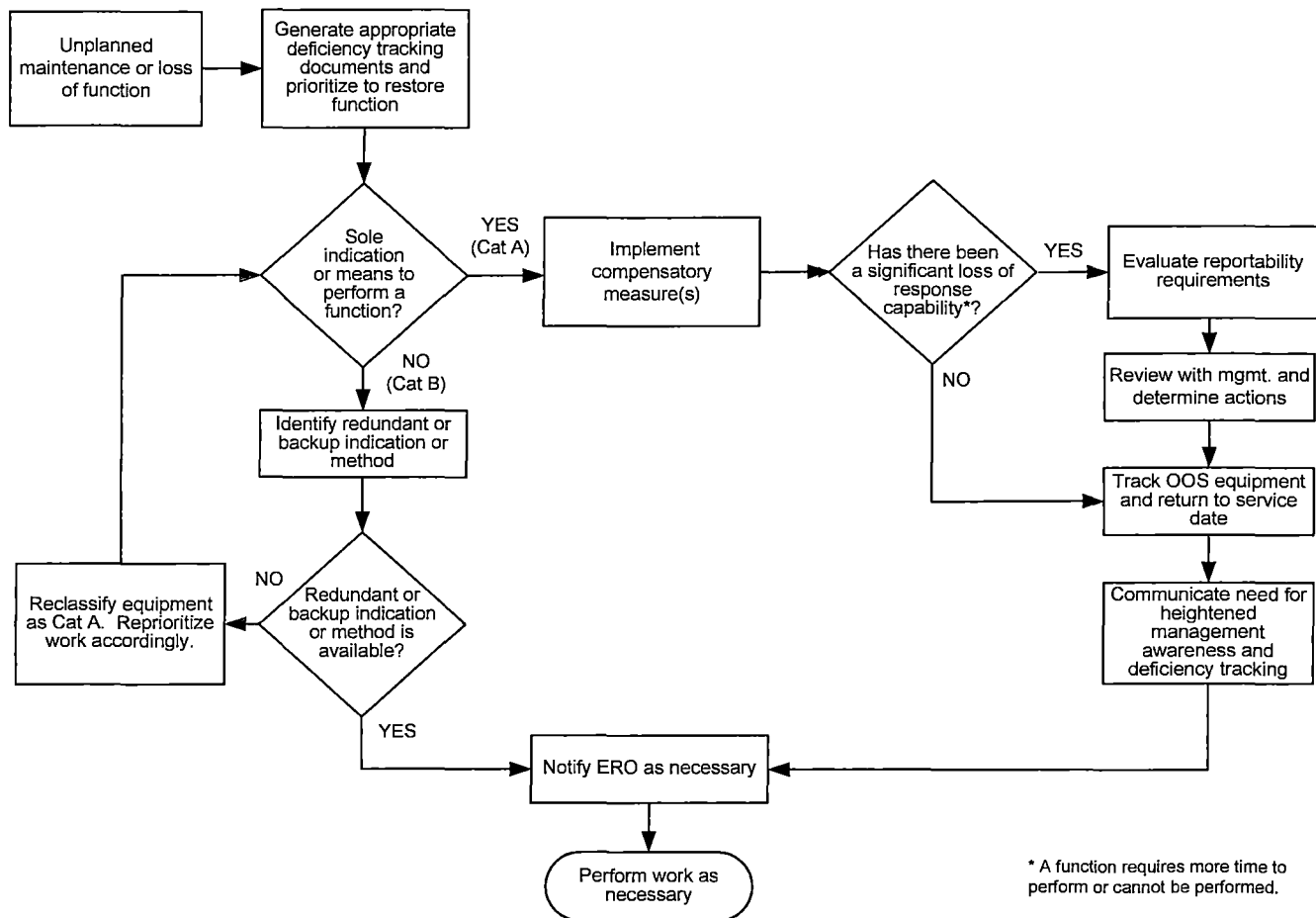
Number: 13.14.11	Use Category: REFERENCE	Major Rev: 012
Title: EP Equipment		Minor Rev: N/A
		Page: 63 of 65

<u>EPN</u>	<u>Noun Name / Description</u>	<u>EP Required Mode</u>	<u>INPO 10-007 Equipment Category</u>	<u>EAL</u>	<u>Alternate Indication and / or Compensatory Measure</u>	<u>Comments</u>
NA (JIC)	Spokesperson	1 2 3 4 5 def	B	NA	Contact IS	Inventoried/Tested by Telecom
	Support Manager					
	Technical Spokesperson					
	Washington State Representative EMD					
	Washington Department of Agriculture					
	Washington Department of Health					
NA (JIC)	Televisions, broadcast (x2)	1 2 3 4 5 def	B	NA	White Board	
NA (JIC)	Video	1 2 3 4 5 def	B	NA	Contact IS	
	JIC Projector					
	Walkley Room Projector					

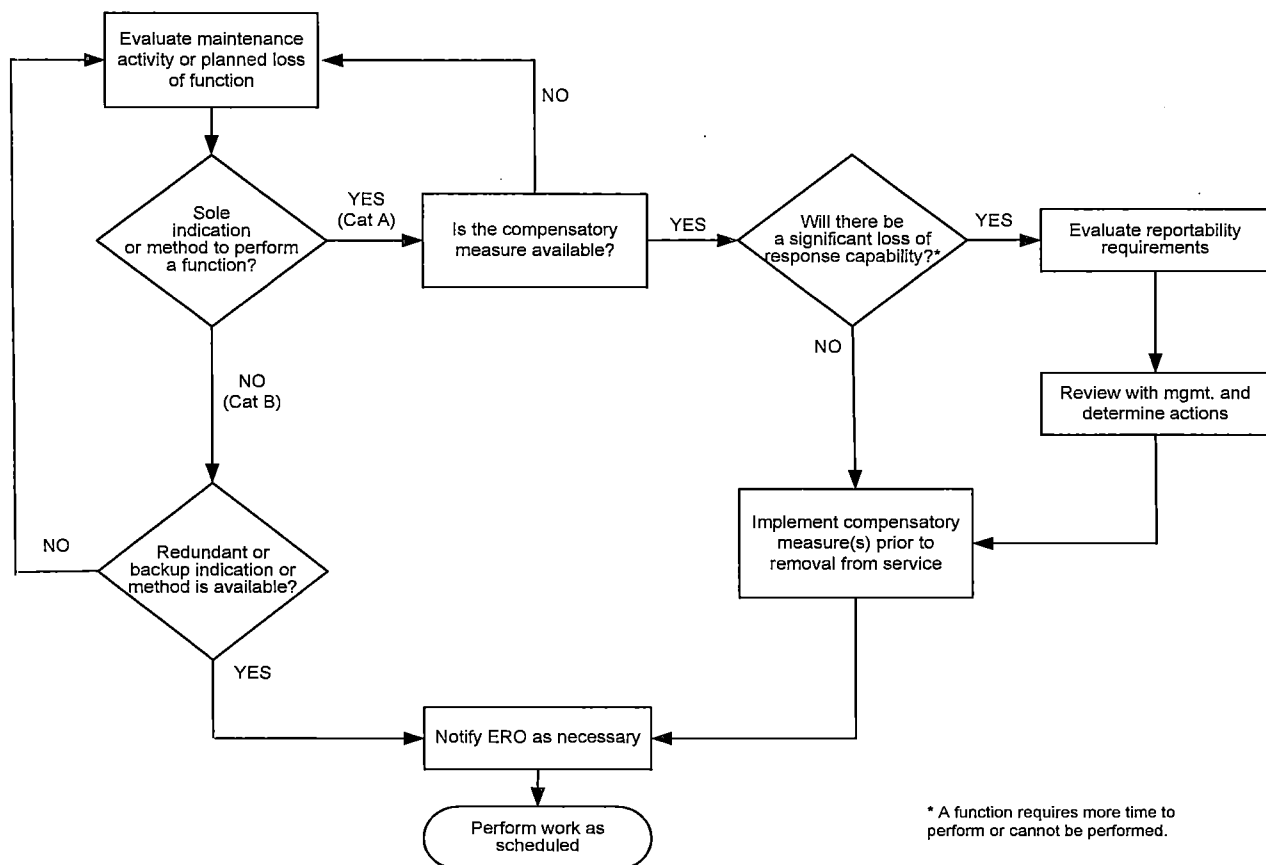
END

Number: 13.14.11	Use Category: REFERENCE	Major Rev: 012
Title: EP Equipment		Minor Rev: N/A
		Page: 64 of 65

UNPLANNED LOSS OF EQUIPMENT



END

PLANNED LOSS OF EQUIPMENT

END