

REGULATORY INFORMATION DISTRIBUTION SYSTEM (RIDS)

ACCESSION NBR: 8001290517 DOC. DATE: 80/01/23 NOTARIZED: NO DOCKET #  
 FACIL: 50-250 Turkey Point Plant, Unit 3, Florida Power and Light C 05000250  
 50-251 Turkey Point Plant, Unit 4, Florida Power and Light C 05000251  
 AUTH. NAME: URRIG, R. E. AUTHOR AFFILIATION: Florida Power & Light Co.  
 RECIP. NAME: SCHWENCER, A. RECIPIENT AFFILIATION: Operating Reactors Branch 1

SUBJECT: Forwards Drawing 560-M-339/79-112 in response to 791212 ltr  
 re Lessons Learned Task Force recommendations concerning  
 auxiliary feedwater sys. Drawing available in CF only.

DISTRIBUTION CODE: A001S COPIES RECEIVED: LTR 3, ENCL 1 SIZE: 1+1  
 TITLE: General Distribution for after Issuance of Operating Lic

NOTES: DRWGS. TO FILES

ACTION:	ID CODE NAME	COPIES		ID CODE NAME	COPIES	
		LTR	ENCL		LTR	ENCL
	05 BC ORB #1	1	1			
INTERNAL:	01 REG FILE	1	1	02 NRC PDR	1	1
	12 I&E	2	2	14 YA7E00	1	1
	15 CORE PERF BR	1	1	17 ENGR BR	1	1
	18 REAC SFTY BR	1	1	19 PLANT SYS BR	1	1
	20 EEB	1	1	21 EFCT TRT SYS	1	1
	22 BRINKMAN	1	1	EPB-DUR	1	1
	OELO	1	0			
EXTERNAL:	03 LPDR	1	1	04 NSIC	1	1
	23 ACRS	16	16			

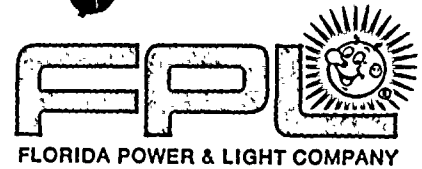
see drawings: 8001290522

JAN 30 1980

TOTAL NUMBER OF COPIES REQUIRED: LTR 39 ENCL 38

may

[The page contains extremely faint, illegible text, likely a document or report, with two large black circular marks at the top.]



January 23, 1980  
L-80-33

Office of Nuclear Reactor Regulation  
Attention: Mr. A. Schwencer, Chief  
Operating Reactors Branch #1  
Division of Operating Reactors  
U. S. Nuclear Regulatory Commission  
Washington, D. C. 20555

Dear Mr. Schwencer:

Re: Turkey Point Units 3 & 4.  
Docket Nos. 50-250 and 50-251  
Auxiliary Feedwater System

The attached drawings are submitted in response to your letter of December 12, 1979 regarding Lessons Learned recommendations 2.1.7.a and 2.1.7.b in accordance with Florida Power & Light Company's letter of January 14, 1980.

Very truly yours,

*[Signature]*

Robert E. Uhrig  
Vice President  
Advanced Systems & Technology

REU/GDW/ah

Attachments

cc: J. P. O'Reilly, Region II  
Harold F. Reis, Esquire

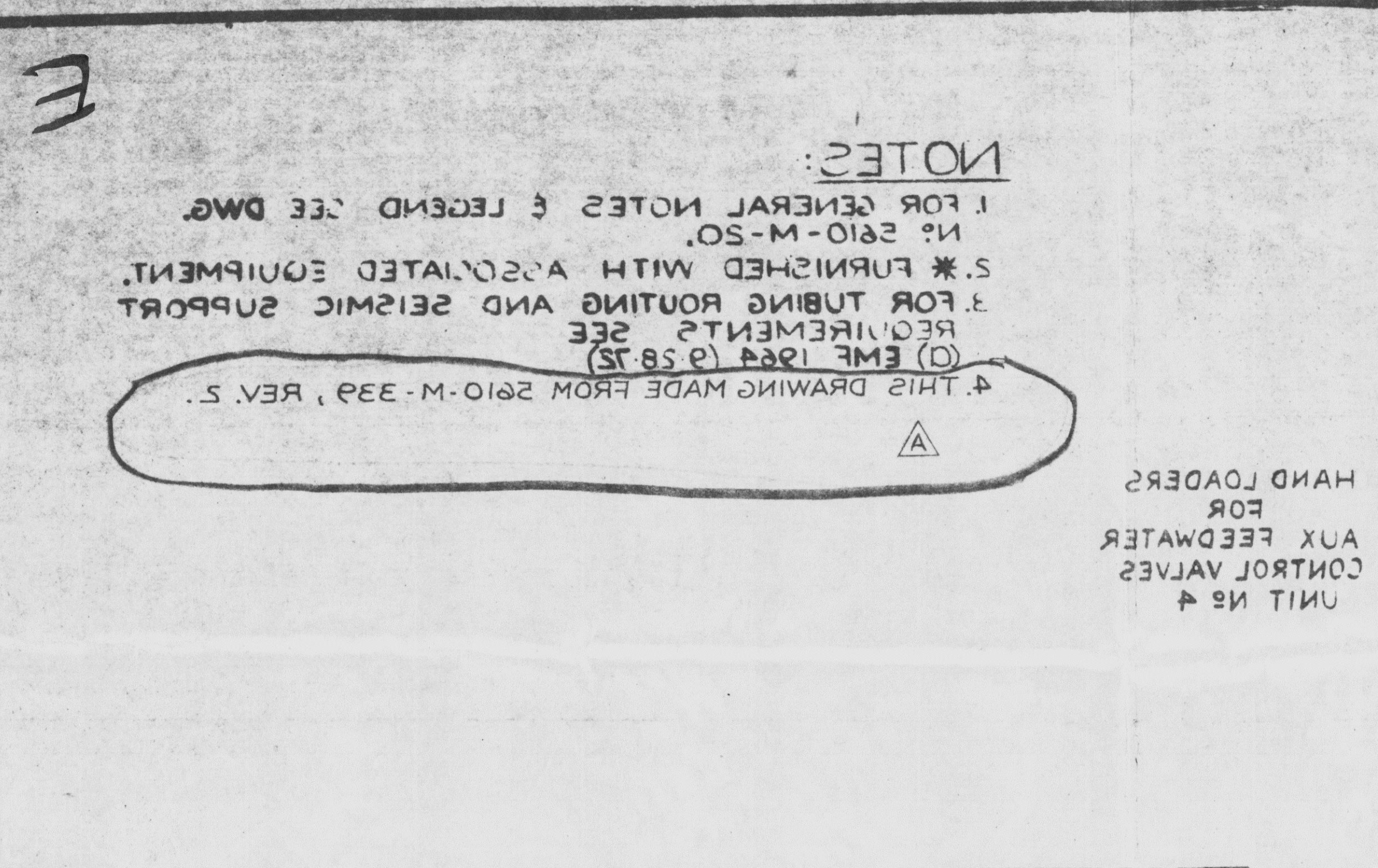
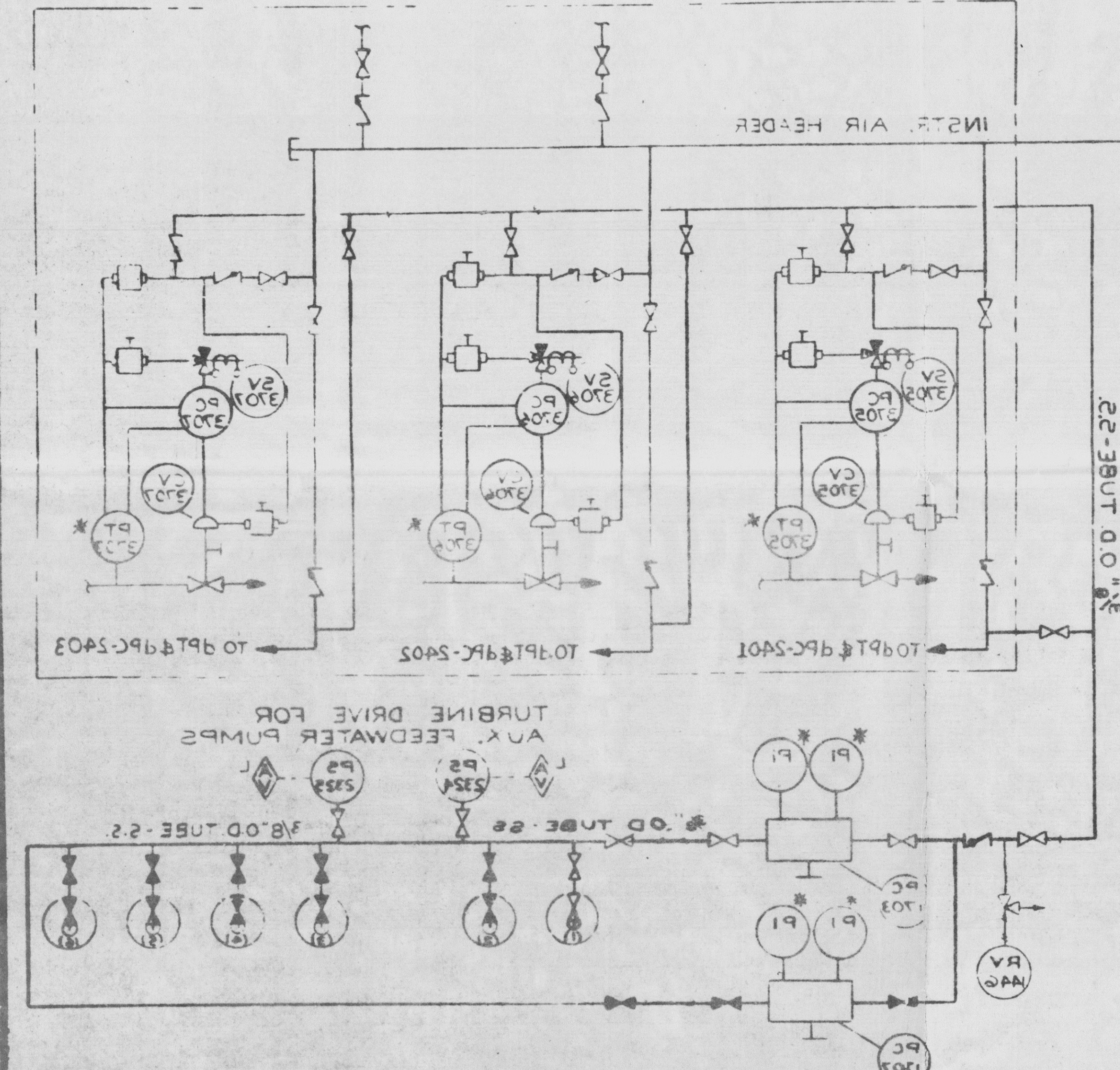
*App' 3/1  
Draws to  
File*

800 129 0517



FILE NUMBER:	PC/M 29-115/13
DATE:	2510-M-33a/29-115
DRAWING NO.:	A

**DIAGRAM**  
**PIPING & INSTRUMENT**  
**NITROGEN BACK-UP SUPPLY SYSTEM**  
**FLORIDA POWER & LIGHT COMPANY**  
**TURNKEY POINT NUCLEAR UNITS**  
**UNIT NO. 3 1970-200 WM ON**  
**UNIT NO. 4 1971-200 WM INSTALLATION**  
**GAITHERSBURG, MARYLAND**  
**BECHTEL CORPORATION**



**NOTES:**  
 1. FOR GENERAL NOTES & LEGEND SEE DWG. NO. 2510-M-30.  
 2. \* FURNISHED WITH ASSOCIATED EQUIPMENT.  
 3. FOR TUBING ROUTING AND SEISMIC SUPPORT REQUIREMENTS SEE (D) EMP 1964 (258-15)  
 4. THIS DRAWING MADE FROM 2510-M-33a, REV. 5.

UNIT NO. 4  
 AUX FEEDWATER  
 CONTROL VALVES  
 HAND LOADERS  
 FOR

UNIT NO. 3  
 AUX FEEDWATER  
 CONTROL VALVES  
 HAND LOADERS  
 FOR

UNIT NO. 2  
 AUX FEEDWATER  
 CONTROL VALVES  
 HAND LOADERS  
 FOR

UNIT NO. 1  
 AUX FEEDWATER  
 CONTROL VALVES  
 HAND LOADERS  
 FOR

UNIT NO. 4  
 AUX FEEDWATER  
 CONTROL VALVES  
 HAND LOADERS  
 FOR

UNIT NO. 3  
 AUX FEEDWATER  
 CONTROL VALVES  
 HAND LOADERS  
 FOR

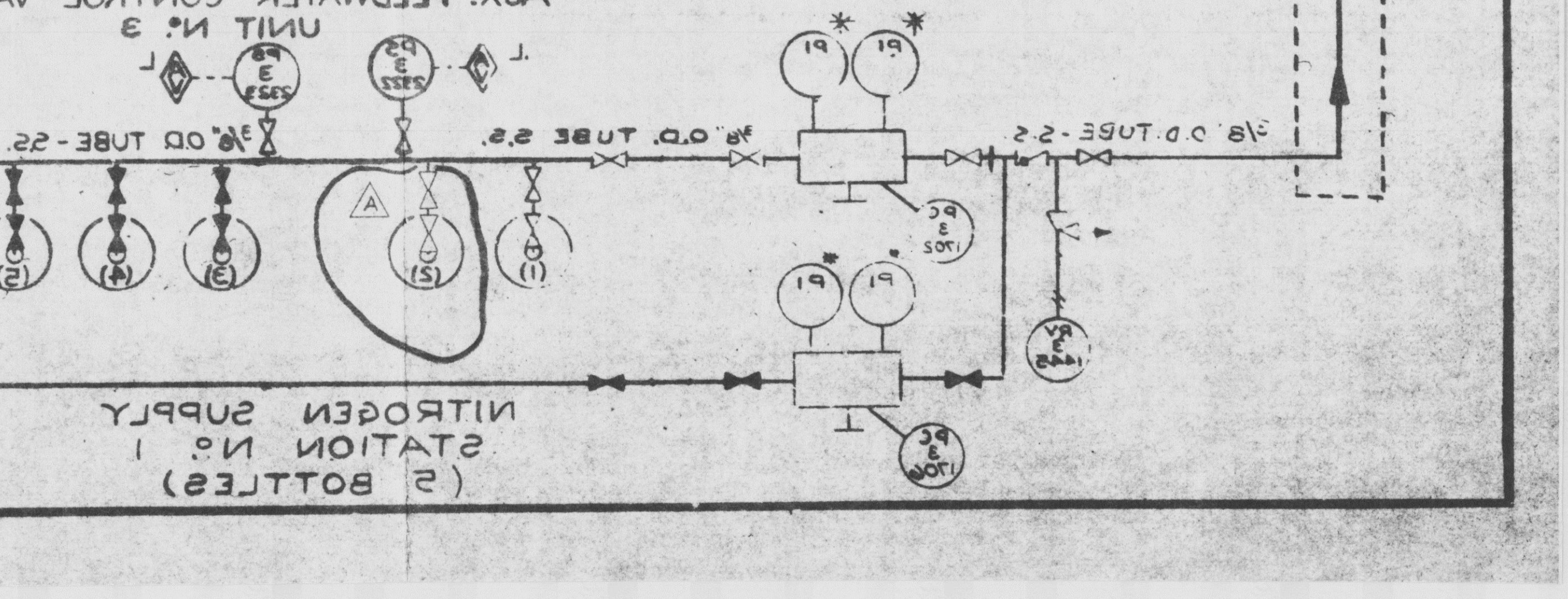
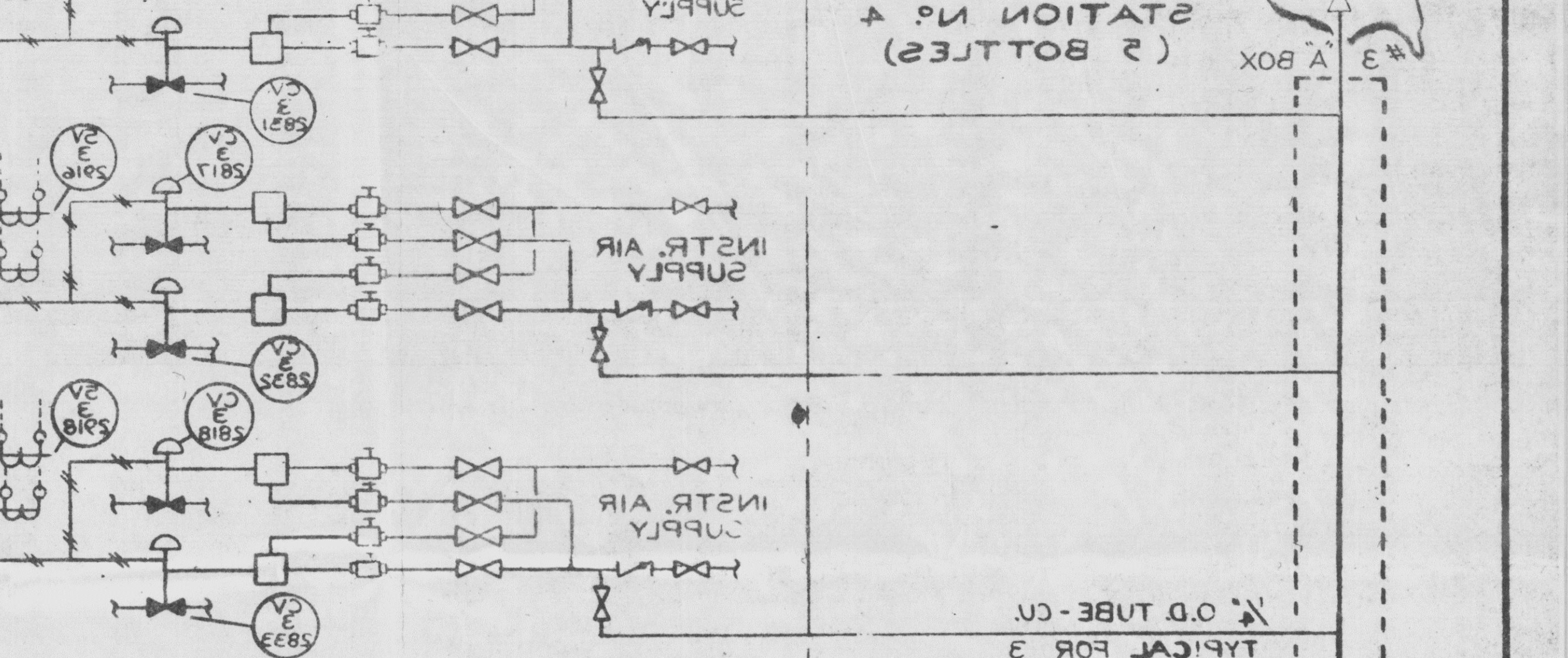
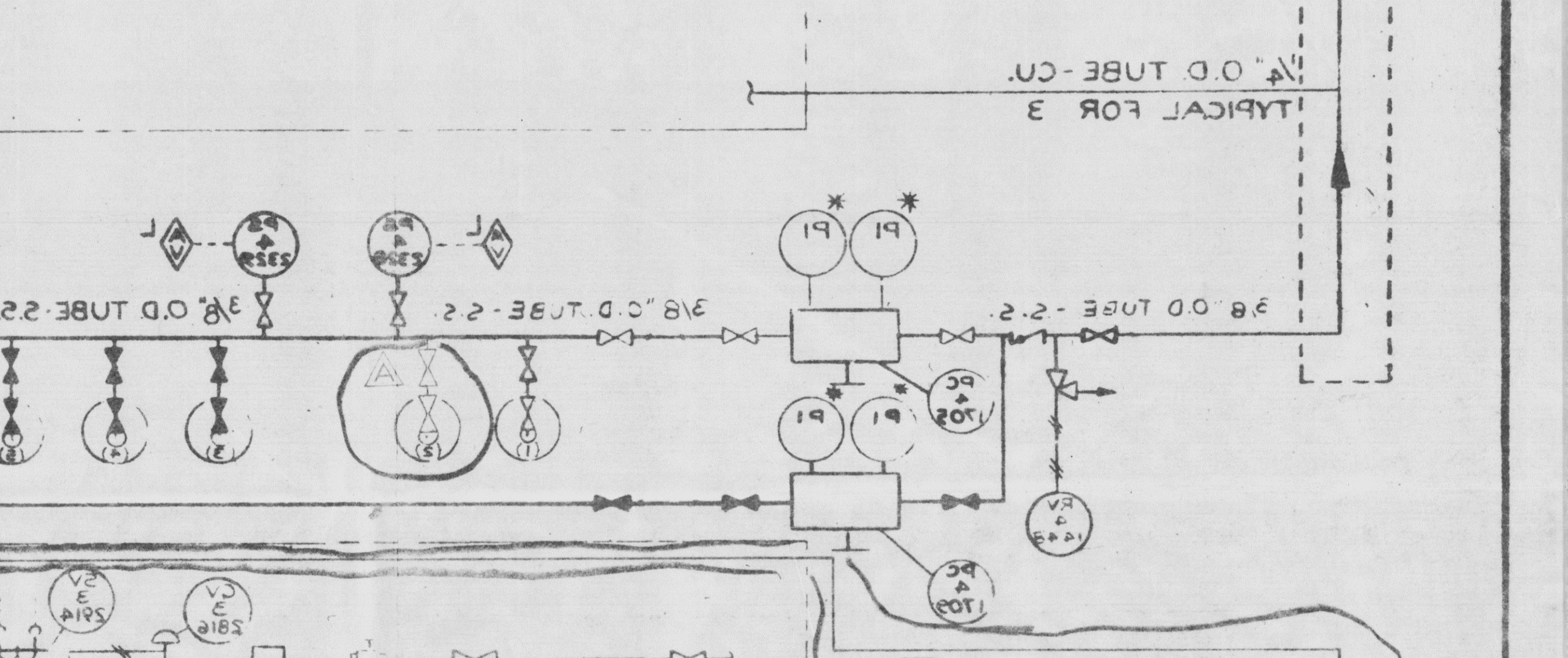
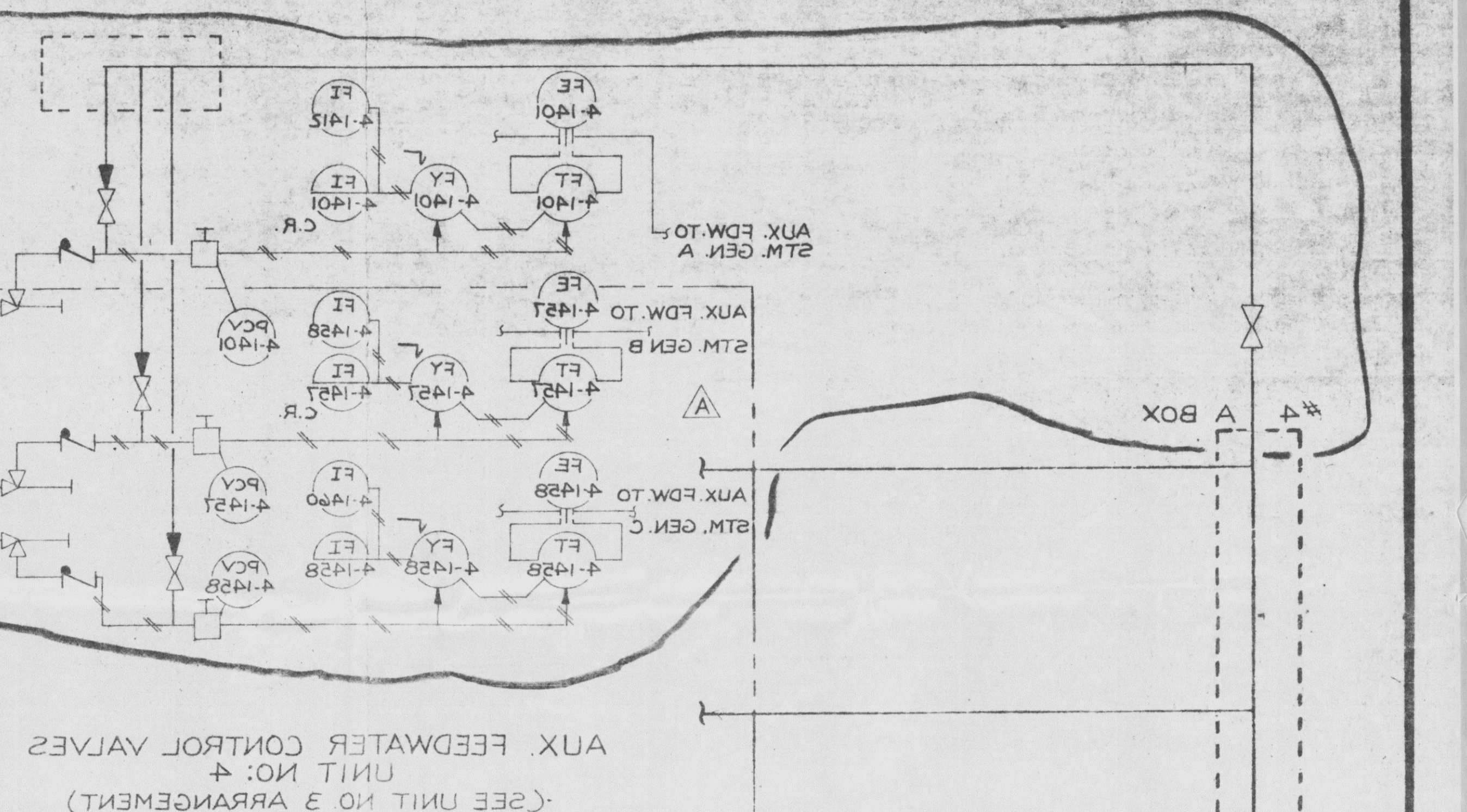
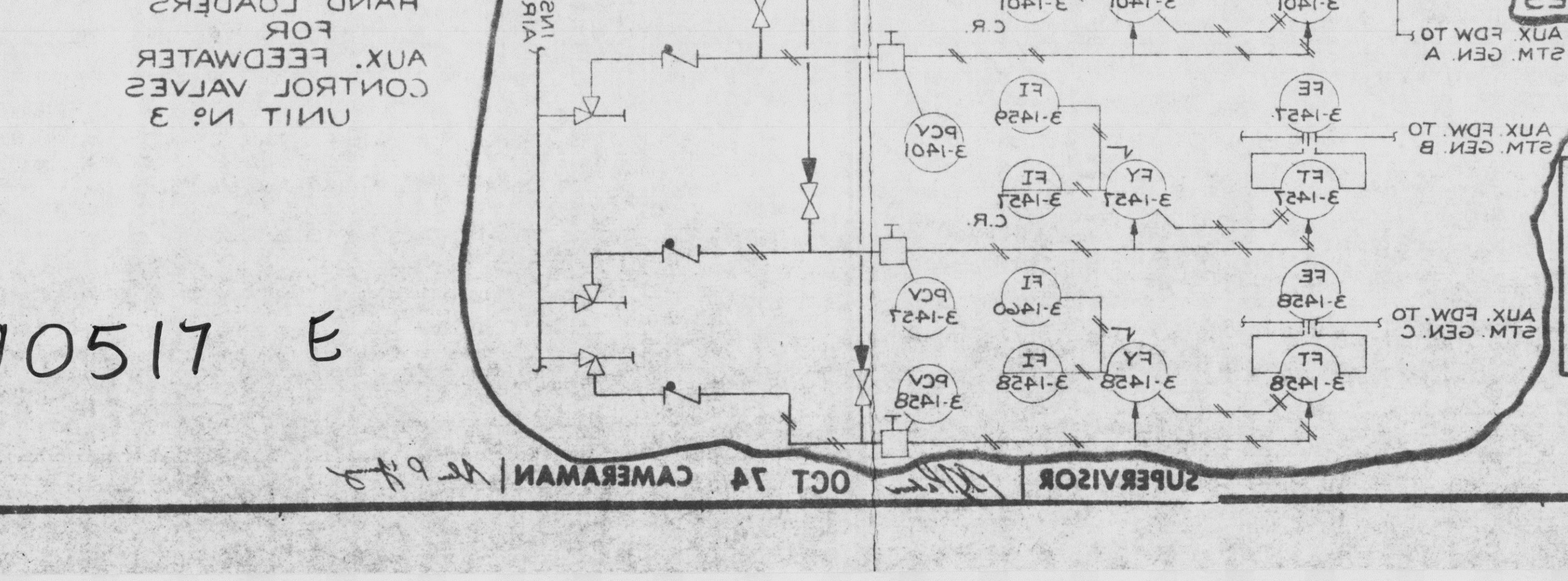
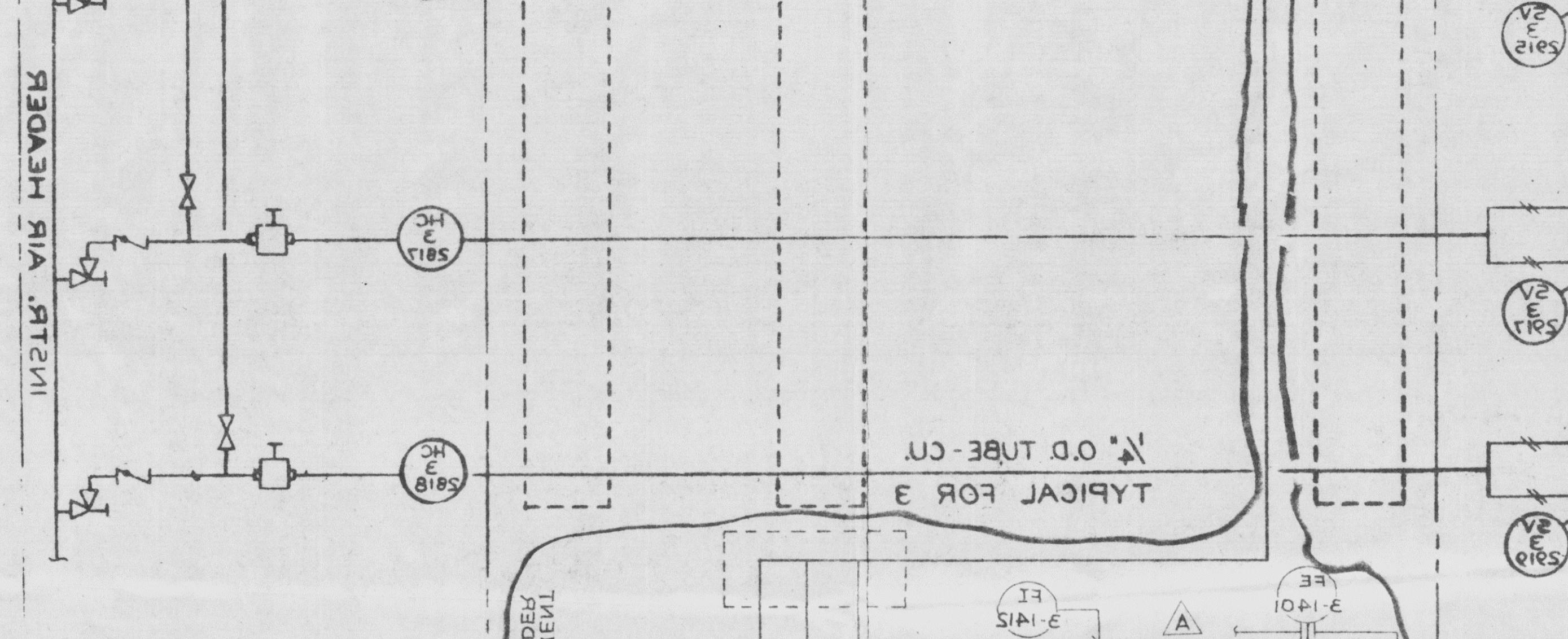
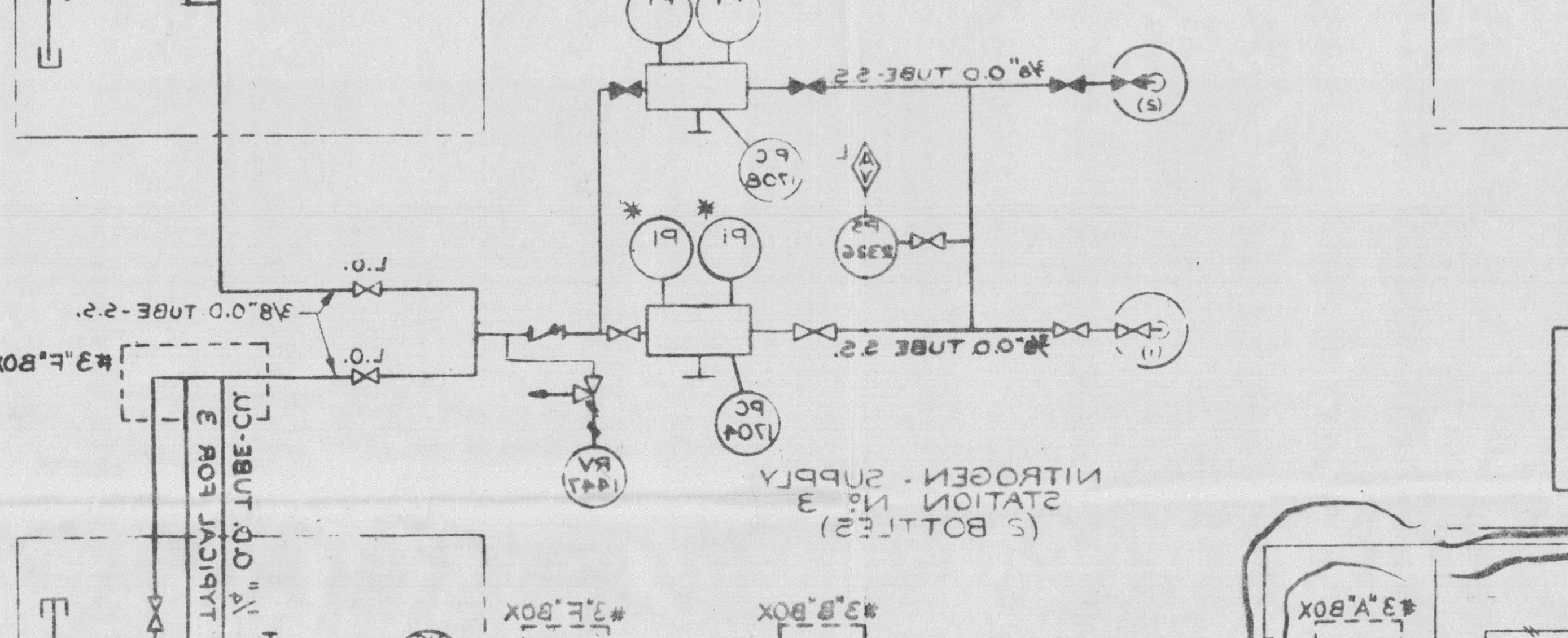
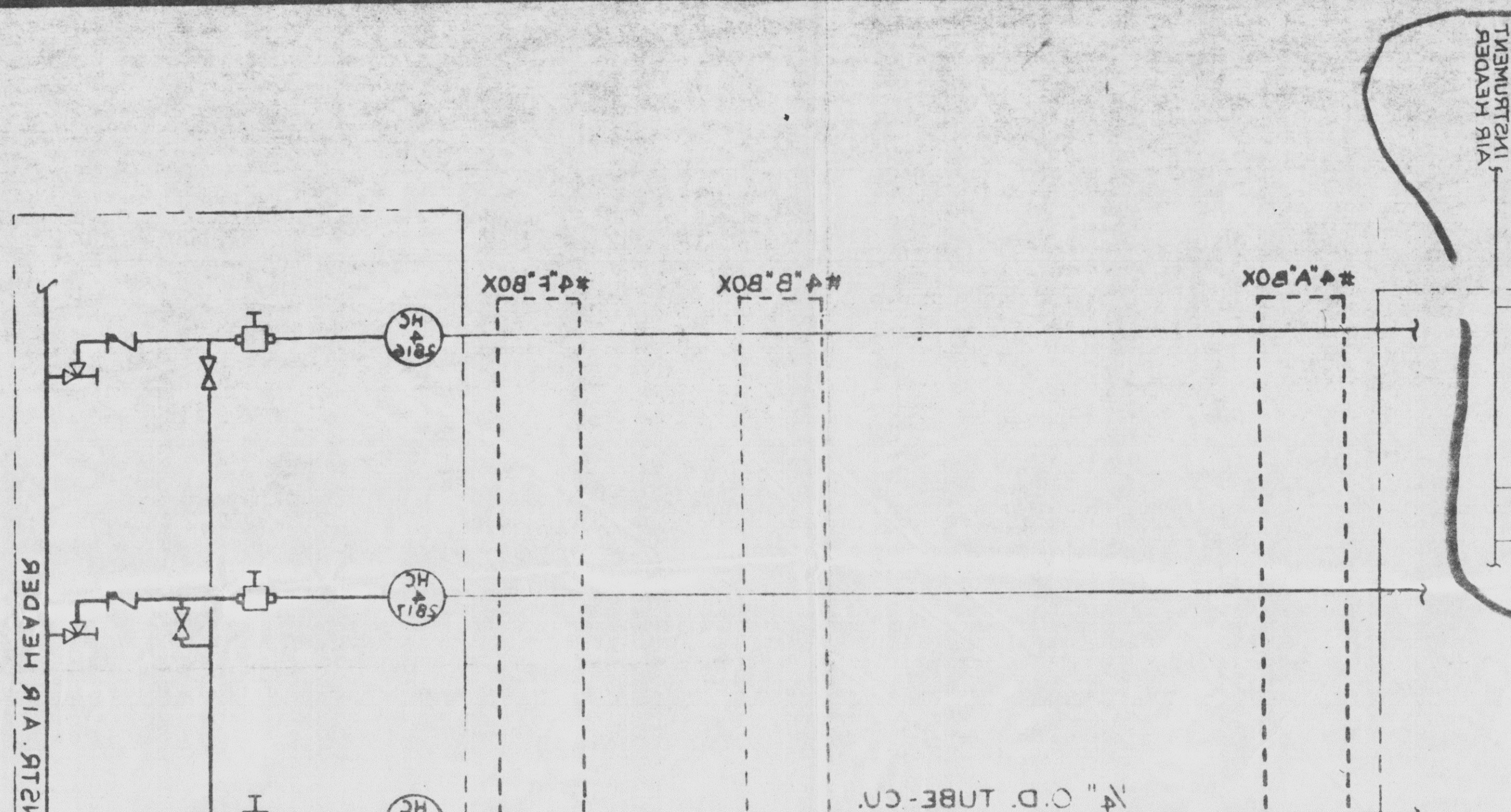
UNIT NO. 2  
 AUX FEEDWATER  
 CONTROL VALVES  
 HAND LOADERS  
 FOR

UNIT NO. 1  
 AUX FEEDWATER  
 CONTROL VALVES  
 HAND LOADERS  
 FOR

UNIT NO. 4  
 AUX FEEDWATER  
 CONTROL VALVES  
 HAND LOADERS  
 FOR

UNIT NO. 3  
 AUX FEEDWATER  
 CONTROL VALVES  
 HAND LOADERS  
 FOR

UNIT NO. 2  
 AUX FEEDWATER  
 CONTROL VALVES  
 HAND LOADERS  
 FOR



8001290517 E

OCT 24 CAMERAMAN / VC 9.4.2

SUPERVISOR