

REGULATORY INFORMATION DISTRIBUTION SYSTEM (RIDS)

ACCESSION NBR: 7908170352 DOC. DATE: 79/08/14 NOTARIZED: NO DOCKET #
 FACIL: 50-251 Turkey Point Plant, Unit 4, Florida Power and Light C 05000251
 AUTH. NAME AUTHOR AFFILIATION
 UHRIG, R.E. Florida Power & Light Co.
 RECIP. NAME RECIPIENT AFFILIATION
 STELLO, V. Division of Operating Reactors

SUBJECT: Forwards proposed changes to pump & valve test program.

DISTRIBUTION CODE: A001S COPIES RECEIVED: LTR 3 ENCL 3 SIZE: 44
 TITLE: GENERAL DISTRIBUTION FOR AFTER ISSUANCE OF OPERATING LIC

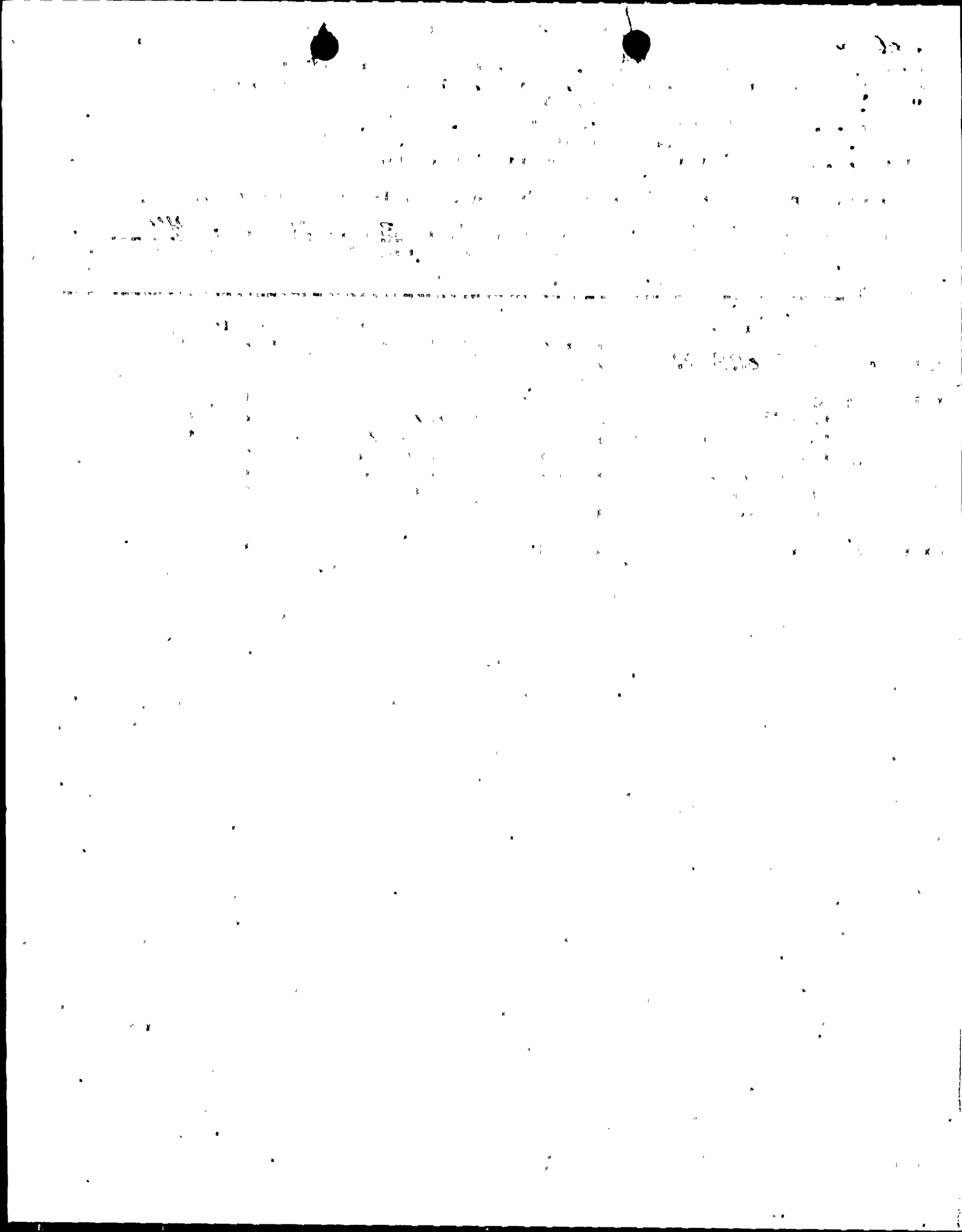
NOTES: -----

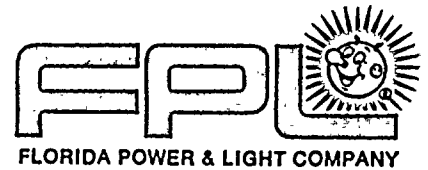
ACTION:	RECIPIENT	COPIES		RECIPIENT	COPIES	
	ID CODE/NAME	LTTR	ENCL		ID CODE/NAME	LTTR
ACTION:	05 BC <u>ORB #1</u>	7	7			
INTERNAL:	01 <u>REG FILE</u>	1	1	02 NRC PDR	1	1
	12 I&E	2	2	14 TA/EDO	1	1
	15 CORE PERF BR	1	1	16 AD SYS/PROJ	1	1
	17 ENGR BR	1	1	18 REAC SFTY BR	1	1
	19 PLANT SYS BR	1	1	20 EEB	1	1
	21 EFLT TRT SYS	1	1	22 BRINKMAN	1	1
	OELD	1	0			
EXTERNAL:	03 LPDR	1	1	04 NSIC	1	1
	23 ACRS	16	16			

AUG 26 1979

TRAC
COO

TOTAL NUMBER OF COPIES REQUIRED: LTTR 39 ENCL 38





August 10, 1979
L-79-219

Director of Nuclear Reactor Regulation
Attention: Mr. Victor Stello, Director
Division of Operating Reactors
U. S. Nuclear Regulatory Commission
Washington, D. C. 20555

Dear Mr. Stello:

Re: Turkey Point Unit 4
Docket No. 50-251
Proposed Changes to the Pump and Valve Test Program

Our most recent Pump and Valve Test Program for Turkey Point Unit 4 was submitted on August 23, 1978 (L-78-275). Portions of this program were discussed on July 13, 1979 during a telephone conference between representatives of Florida Power & Light Company and the NRC staff. As a result of that conference, several revisions have been made to the August 23 program. Brief descriptions of the revisions are contained in Attachment 1 to this letter. Revised Unit 4 Pump and Valve Program pages are contained in Attachment 2.

The proposed program changes have been reviewed by the Turkey Point Plant Nuclear Safety Committee and the Florida Power & Light Company Nuclear Review Board. They have concluded that the changes do not involve any unreviewed safety questions.

Very truly yours,

Robert E. Uhrig
Vice President
Advanced Systems & Technology

REU/MAS/cph

Attachment

cc: Mr. James P. O'Reilly, Region II
Robert Lowenstein, Esquire

7908170 352

A001
S 3/3

1944

1944

ATTACHMENT 1

Re: Turkey Point Unit 4
Proposed Program Changes
Pump and Valve Test Program

The following is an outline of revisions to the August 23, 1978 program:

1. Valve Nos. SV-3522A & 3522B
Valve Nos. CV-2046A & 2046B
(Diesel Oil System)

A relief request is submitted to delete these valves from position verification and/or stroke time testing. (Refer to Attachment 2, Section I.)

2. Valve Nos. CV-4-2816, 2817, & 2818
Valve Nos. CV-4-2831, 2832, & 2833
(Auxiliary Feedwater Control Valves, Hand Control-Modulating)

A relief request is submitted to delete these modulating valves from stroke time testing. (Refer to Attachment 2, Section I.)

3. Valve Nos. 4-879A, 879B, 879C, & 879D
(HPSI Pump Discharge Check Valves)

A relief request is submitted to permit testing of these valves during refueling shutdown instead of during plant operation or cold shutdown. (Refer to Attachment 2, Section I.)

4. Passive Valves

A general relief request is submitted for "Passive Valves" identified in the Unit 4 Pump and Valve Test Program. (Refer to Attachment 2, Section II.)

5. Editorial Change

The word "exemption" has been deleted from the Program. (Refer to Attachment 2, Section III.)

ATTACHMENT 2

Re: Turkey Point Unit 4
Proposed Program Changes
Pump and Valve Test Program

REVISED PAGES:

Section I - Specific relief requests and revised Tables for valves identified in Attachment 1.

Section II - Generic relief request and revised Tables for "passive" valves.

Section III - Revised Program pages and Tables with the word "exemption" deleted.

Attachment 2 - Section I

Specific relief requests and revised Tables for valves identified in Attachment 1.

RELIEF REQUEST BASIS

SYSTEM: Diesel Oil

1. Valve: SV-3522A and SV-3522B
Category: B
Class: 2

Function: Provides the flow path from the Emergency Diesel-generator Diesel Oil Day Tank to the Skid-mounted Diesel Oil Tank.

Test Requirement: IWV-3410

Basis for Relief: These self-contained, completely enclosed solenoid valves have no external valve position indicators. Therefore, stroke-time measurements and valve position verification is impractical.

Alternate Testing: An increase in level in the Skid-mounted Diesel Oil Tank while exercising these valves quarterly will demonstrate that the moving parts of the valve function satisfactorily.

2. Valve: CV-2046A and CV-2046B
Category: B
Class: 3

Function: Provides the flow path from the Emergency Diesel-generator Diesel Oil Transfer Pump Discharge Header to the Diesel Oil Day Tanks.

Test Requirement: IWV-3410

Basis for Relief: Valve stroke-time is not essential for the valve to fulfill its safety related function.

Alternate Testing: Exercising these valves quarterly will demonstrate that the moving parts of the valve function satisfactorily.

FLORIDA POWER & LIGHT COMPANY

VALVE NUMBER	SIZE	TYPE	ACTU.	CODE CL.	CODE CAT.	ACT/ PAS	NORM. POS.	FAIL- URE MODE	REM. POS. IND.	TEST PER.	ISI TESTS	RRB NO.	VALVE COORD	REMARKS
70-006A	2	CHECK	SELF	3	C	A	NC	--	NO	3	EF-1	--	B-4	
70-006B	2	CHECK	SELF	3	C	A	NC	--	NO	3	EF-1	--	B-4	
CV-2046A	2	PLUG	A/O	3	B	A	NC	--	NO	3	EF-1	2	C-3	
CV-2046B	2	PLUG	A/O	3	B	A	NC	--	NO	3	EF-1	2	C-5	
SV-3522A	1 1/2	GLOBE	SO	3	B	A	NC	--	NO	3	EF-1	1	D-4	
SV-3522B	1 1/2	GLOBE	SO	3	B	A	NC	--	NO	3	EF-1	1	D-5	
NOTE: NO TABLE 11 VALVES														

SYSTEM
TITLE

DIESEL OIL

PROGRAM
TITLE

VALVE TEST PROGRAM

CHART
TITLE

F-502033

TABLE 1
TESTS TO CODE

RELIEF REQUEST BASIS

SYSTEM: Condensate and Feedwater

3. Valve: CV-4-2900, CV-4-2901, and CV-4-2902
Category: C
Class: 2

Function: Prevents reverse flow from the associated steam generator to the Feedwater System.

Test Requirement: IWV-3520

Basis for Relief: Testing any one of these valves, during plant operation, would cause an interruption of feedwater flow to the associated steam generator; thereby, placing the plant in an unsafe mode of operation.

Alternate Testing: These valves will be tested during cold shutdowns.

4. Valve: CV-4-2816, CV-4-2817, CV-4-2818, CV-4-2831, CV-4-2832, and CV-4-2833
Category: B
Class: 2

Function: Provides a flow path from the Auxiliary Feedwater Pump Discharge Header to Steam Generator Nos. 4A, 4B, or 4C.

Test Requirement: IWV-3410

Basis for Relief: These valves are manually controlled; modulating valves. Therefore, valve stroke-time is not essential to fulfill their safety related function.

Alternate testing: Exercising these valves quarterly will demonstrate that the moving parts of the valve function satisfactorily.

FLORIDA POWER & LIGHT COMPANY

FLORIDA POWER & LIGHT COMPANY														
VALVE NUMBER	SIZE	TYPE	ACTU.	CODE CL.	CODE CAT.	ACT/ PAS	NORM. POS.	FAIL- URE MODE	REM. POS. IND.	TEST PER.	ISI TESTS	RIB NO.	VALVE COORD	REMARKS
CV-4-2816	4	PLUG	AO	2	B	A	NC	FC	NO	3 3	EF-1 EF-7	4	B-10	
CV-4-2817	4	PLUG	AO	2	B	A	NC	FC	NO	3 3	EF-1 EF-7	4	B-11	
CV-4-2818	4	PLUG	AO	2	B	A	NC	FC	NO	3 3	EF-1 EF-7	4	C-11	
CV-4-2831	4	PLUG	AO	2	B	A	NC	FC	NO	3 3	EF-1 EF-7	4	B-10	
CV-4-2832	4	PLUG	AO	2	B	A	NC	FC	NO	3 3	EF-1 EF-7	4	B-11	
CV-4-2833	4	PLUG	AO	2	B	A	NC	FC	NO	3 3	EF-1 EF-7	4	C-11	
20-143	6	CHECK	SELF	3	C	A	NC	--	NO	3	EF-1	--	D-12	
20-243	6	CHECK	SELF	3	C	A	NC	--	NO	3	EF-1	--	C-12	
20-343	6	CHECK	SELF	3	C	A	NC	--	NO	3	EF-1	--	D-12	

SYSTEM
TITLE

CONDENSATE AND FEEDWATER

CHART
TITLE

F-502028

PROGRAM
TITLE

VALVE TEST PROGRAM

TABLE 1

TESTS TO CODE

RELIEF REQUEST BASIS

SYSTEM: Safety Injection

18. Valve: 4-890A and 4-890B
Category: C
Class: 2

Function: Prevents reverse flow from a non-operating Containment Spray Header to the Containment Spray pump suction header.

Test Requirement: IWV-3520

Basis for Relief: Testing of these valves, by placing this system in operation, would result in dousing the Containment.

Alternate Testing: These valves will be dissassembled, on an alternating basis, during refueling shutdowns over the ten year Inservice Inspection Interval to inspect the valves' internals and to physically verify the valves' freedom of motion to the open and closed positions.. Any problems found during this inspection would be cause for inspecting the other valves.

19. Valve: 879A, 879B, 879C, and 879D
Category: C
Class: 2

Function: Prevents reverse flow from the High Pressure Safety System Supply Header to a non-operating High Pressure Safety Injection Pump.

Test Requirement: IWV-3520

Basis for Relief: These valves cannot be tested during plant operation because the High Pressure Safety Injection System Pumps do not develop sufficient discharge head to establish a flow path to the Reactor Coolant System.

Further, testing of these valves during cold shutdowns is impractical since it could subject the Reactor Coolant System to conditions exceeding pressure-temperature limits.

Alternate Testing: These check valves will be exercised during refueling shutdown.

Additional Testing: These check valves will be exercised quarterly during the performance of associated pump tests.

FLORIDA POWER & LIGHT COMPANY

VALVE NUMBER	SIZE	TYPE	ACTU.	CODE CL.	CODE CAT.	ACT/ PAS	NORM. POS.	FAIL- URE MODE	REM. POS. IND.	TEST PER.	ISI TESTS	RUN NO.	VALVE COORD	REMARKS
879A	3	CHECK	SA	2	C	A	NC	--	NO	3	EF-1	19	D-7	
879B	3	CHECK	SA	2	C	A	NC	--	NO	3	EF-1	19	C-7	
879C	3	CHECK	SA	2	C	A	NC	--	NO	3	EF-1	19	C-7	
879D	3	CHECK	SA	2	C	A	NC	--	NO	3	EF-1	19	C-7	
4-875A	10	CHECK	SA	1	C	A	NC	--	NO	2	EF-2	9	A-16	
4-875B	10	CHECK	SA	1	C	A	NC	--	NO	2	EF-2	9	A-17	
4-875C	10	CHECK	SA	1	C	A	NC	--	NO	2	EF-2	9	A-17	
MOV-4-865A	10	GATE	MO	2	E	P	LO	FAI	YES	1	OC-1	0	B-15	
MOV-4-865B	10	GATE	MO	2	E	P	LO	FAI	YES	1	OC-1	0	B-13	
MOV-4-865C	10	GATE	MO	2	E	P	LO	FAI	YES	1	OC-1	0	B-11	
4-2915	2	GATE	MAN	2	E	P	LO	FAI	NO	1	OC-1	0	B-10	

SYSTEM
TITLE SAFETY INJECTION SYSTEM (SIS)CHART
TITLE E-503185PROGRAM
TITLE

VALVE TEST PROGRAM

TABLE 1
TESTS TO CODE

Attachment 2 - Section II

Generic relief request and revised Tables for "passive" valves..

SYSTEM:

- Chemical Volume Control System
- Safety Injection System
- Auxiliary Coolant, Component Cooling Water System
- Auxiliary Coolant, Residual Heat Removal System
- Steam System
- Condensate and Feedwater System
- Lube Oil, Service and Instrument Air System
- Containment and Radwaste Drains and Vents
- Containment Ventilation
- Reactor Coolant System
- Sampling
- Waste Disposal - Liquid
- Diesel Oil
- Primary Makeup and Containment Cooling
- Intake Cooling Water System

0. Valve: Passive Valves listed in Table I and Table .II
Category: Passive
Class: 1, 2, or 3

Test Requirement: IWV - 3410

Basis for Relief: "Passive Valves" are not required to change position to either safely shut down the reactor or mitigate the consequences of an accident.

I. D. LIST OF VALVE TABLE SYMBOLS (CONT'D)

RRB NO. NUMBER RELATES TO APPROPRIATE VALVE
RELIEF REQUEST BASIS

VALVE COORDINATE LOCATION OF VALVE ON DRAWING

REMARKS RELATED TO SPECIAL ALTERNATE TESTING

TABLE - A

<u>CATEGORY</u>	<u>VALVE FUNCTION</u>	<u>CODE LEAK TEST</u>	<u>CODE EXER. TEST</u>	<u>CODE POSIT. VERIF.</u>
A	ACTIVE	IWV-3420	IWV-3410	NONE
A	PASSIVE*	IWV-3420	NONE	NONE
B	ACTIVE	NONE	IWV-3410	NONE
B	PASSIVE*	NONE	NONE	NONE
C (S/R)	ACTIVE	NONE	IWV-3510	NONE
C (CHK)	ACTIVE	NONE	IWV-3520	NONE
E	PASSIVE*	NONE	NONE	IWV-3700

* NOTE: Refer to Relief Request No. 0.

RELIEF REQUEST BASIS

SYSTEM: Auxiliary Coolant, Residual Heat Removal

1. Valve: MOV-4-744A and MOV-4-744B
Category: B
Class: 2

Function: Provides a flow path from the Low Pressure Safety Injection System to the Reactor Coolant System.

Test Requirement: IWB-3410

Basis for Relief: The testing of these valves during plant operation, coupled with the failure of Valves 4-876A, 4-876B, or 4-876C, could subject the Low Pressure Safety Injection System to pressures in excess of its design pressure.

Alternate Testing: These valves will be tested during cold shutdowns.

2.

RELIEF REQUEST BASIS

SYSTEM: Auxiliary Coolant, Residual Heat Removal

3.

FLORIDA POWER & LIGHT COMPANY

VALVE NUMBER	SIZE	TYPE	ACTU.	CODE CL.	CODE CAT.	ACT/ PAS	NORM. POS.	FAIL- URE MODE	REM. POS. IND.	TEST PER.	ISI TESTS	RIB NO.	VALVE COORD	REMARKS
4-297B	1	NEDL	MAN	2	A	A	NO	FAI	NO	2 1	EF-2 SLT-1	4	A-19	
4-297C	1	NEDL	MAN	2	A	A	NO	FAI	NO	2 1	EF-2 SLT-1	4	A-18	
HCV-4-121	3	PLUG	A/O	2	A	A	NO	FO	NO	2 2 1	EF-2 EF-8 SLT-1	5	C-17	
4-333	3	GLOBE	MAN	2	A	P	NC	FAI	NO	1	SLT-1	0	C-17	
CV-4-310A	3	PLUG	A/O	1	B	A	NO	FO	YES	2 2 2	EF-2 EF-8 EST-3	6	C-19	
CV-4-310B	3	PLUG	A/O	1	B	A	NC	FO	YES	2 2 2	EF-2 EF-8 EST-3	6	C-19	
LCV-4-115C	4	GATE	MO	2	B	A	NO	FAI	YES	2 2	EF-2 EST-3	7	C-14	

SYSTEM
TITLE

CHEM. VOL. CONT. (CVCS)

PROGRAM
TITLE

VALVE TEST PROGRAM

CHART
TITLE

F-503184

TABLE 1
TESTS TO CODE

FLORIDA POWER & LIGHT COMPANY														
VALVE NUMBER	SIZE	TYPE	ACTU.	CODE CL.	CODE CAT.	ACT/ PAS	NORM. POS.	FAIL- URE MODE	REM. POS. IND.	TEST PER.	ISI TESTS	RRR NO.	VALVE COORD	REMARKS
4-895V	3/4	GLOBE	MAN	2	A/E	P	LC	FAI	NO	1 1	SLT-1 OC-1	0	D-12	
MOV-4-866A	2	GLOBE	MO	1	B/E	A	LC	FAI	YES	2 2 1	EF-2 EST-3 OC-1	6	D-15	
MOV-4-866B	2	GLOBE	MO	1	B/E	A	LC	FAI	YES	2 2 1	EF-2 EST-3 OC-1	6	D-15	
MOV-4-843A	4	GATE	MO	2	B	A	NC	FAI	YES	3	EF-1	--	C-13	
MOV-4-843B	4	GATE	MO	2	B	A	NC	FAI	YES	3 3 3	EST-6 EF-1 EST-6	--	C-13	
4-876A	8	CHECK	SA	1	C	A	NC	--	NO	2	EF-2	7	B-15	
4-876B	8	CHECK	SA	1	C	A	NC	--	NO	2	EF-2	7	A-13	
4-876C	8	CHECK	SA	1	C	A	NC	--	NO	2	EF-2	7	A-11	
4-876D	8	CHECK	SA	1	C	A	NC	--	NO	2	EF-2	8	A-13	
4-876E	8	CHECK	SA	1	C	A	NC	--	NO	2	EF-2	8	A-11	

SYSTEM TITLE SAFETY INJECTION SYSTEM (SIS)

CHART TITLE E-503185

PROGRAM TITLE VALVE TEST PROGRAM

TABLE 1
TESTS TO CODE

FLORIDA POWER & LIGHT COMPANY														
VALVE NUMBER	SIZE	TYPE	ACTU.	CODE CL.	CODE CAT.	ACT/ PAS	NORM. POS.	FAIL- URE MODE	REM. POS. IND.	TEST PER.	ISI TESTS	IRB NO.	VALVE (X)RD	REMARKS
4-2916	2	GATE	MAN	2	E	P	LO	FAI	NO	1	OC-1	0	B-9	
4-2917	2	GATE	MAN	2	E	P	LO	FAI	NO	1	OC-1	0	B-9	
4-885	10	GATE	MAN	2	E	P	LO	FAI	NO	1	OC-1	0	A-11	
4-887	8	BUTFY	MAN	2	E	P	LO	FAI	NO	1	OC-1	0	B-6	
4-864-C	8	GATE	MAN	2	E	P	LO	FAI	NO	1	OC-1	0	C-4	
886-A	6	GATE	MAN	2	E	P	LO	FAI	NO	1	OC-1	0	D-6	
886-B	6	GATE	MAN	2	E	P	LO	FAI	NO	1	OC-1	0	C-6	
886-C	6	GATE	MAN	2	E	P	LO	FAI	NO	1	OC-1	0	C-6	
886-D	6	GATE	MAN	2	E	P	LO	FAI	NO	1	OC-1	0	C-6	
888-A	3	GATE	MAN	2	E	P	LO	FAI	NO	1	OC-1	0	D-7	
888-B	3	GATE	MAN	2	E	P	LO	FAI	NO	1	OC-1	0	C-7	
SYSTEM TITLE				PROGRAM TITLE									TABLE 1 TESTS TO CODE	
SAFETY INJECTION SYSTEM (SIS)				VALVE TEST PROGRAM										
CHANGE TITLE														
E-503185														

FLORIDA POWER & LIGHT COMPANY

FLORIDA POWER & LIGHT COMPANY														
VALVE NUMBER	SIZE	TYPE	ACTU.	CODE CL.	CODE CAT.	ACT/ PAS	NORM. POS.	FAIL- URE MODE	REM. POS. IND.	TEST PER.	ISI TESTS	RWD NO.	VALVE (XOR)	REMARKS
888-C	3	GATE	MAN	2	E	P	LO	FAI	NO	1	OC-1	0	C-7	
888-D	3	GATE	MAN	2	E	P	LO	FAI	NO	1	OC-1	0	C-7	
845-A	4	GATE	MAN	2	E	P	LO	FAI	NO	1	OC-1	0	D-7	
845-B	4	GATE	MAN	2	E	P	LO	FAI	NO	1	OC-1	0	C-7	
845-C	4	GATE	MAN	2	E	P	LO	FAI	NO	1	OC-1	0	C-7	
845-D	4	GATE	MAN	2	E	P	LO	FAI	NO	1	OC-1	0	C-7	
4-844-A	8	GATE	MAN	2	E	P	LO	FAI	NO	1	OC-1	0	B-6	
4-844-B	8	GATE	MAN	2	E	P	LO	FAI	NO	1	OC-1	0	B-6	
4-891-A	6	GATE	MAN	2	E	P	LO	FAI	NO	1	OC-1	0	B-9	
4-891-B	6	GATE	MAN	2	E	P	LO	FAI	NO	1	OC-1	0	B-9	

SYSTEM TITLE SAFETY INJECTION SYSTEM (SIS)

CHART TITLE E-503185

PROGRAM TITLE VALVE TEST PROGRAM

TABLE 1
TESTS TO CODE

FLORIDA POWER & LIGHT COMPANY

Page 11 of 15

FLORIDA POWER & LIGHT COMPANY														
VALVE NUMBER	SIZE	TYPE	ACTU.	CODE CL.	CODE CAT.	ACT/ PAS	NORM. POS.	FAIL- URE MODE	REM. POS. IND.	TEST PER.	1ST TESTS	RUB NO.	VALVE (XX)RD	REMARKS
4-868A	2	GLOBE	MAN	1	E	P	LO	---	NO	1	OC-1	0	C-15	
4-868B	2	GLOBE	MAN	1	E	P	LO	---	NO	1	OC-1	0	C-15	
4-868C	2	GLOBE	MAN	1	E	P	LO	---	NO	1	OC-1	0	C-15	

SVSIRPA
TITLE.

SAFETY INJECTION SYSTEM (SIS)

CHART
FILE

E-503185

PROGRAM TITLE

VALVE TEST PROGRAM

TABLE 1
TESTS TO CODE

FLORIDA POWER & LIGHT COMPANY

VALVE NUMBER	SIZE	TYPE	ACTU.	CODE CL.	CODE CAT.	ACT/ PAS	NORM. POS.	FAIL- URE MODE	REM. POS. IND.	TEST PER.	ISI TESTS	RND NO.	VALVE COORD	REMARKS
4-702A	16	CHECK	SELF	3	C	A	NO	--	NO	3	EF-1	--	C-11	
4-702B	16	CHECK	SELF	3	C	A	NO	--	NO	3	EF-1	--	B-11	
4-702C	16	CHECK	SELF	3	C	A	NO	--	NO	3	EF-1	--	B-11	
4-710A	4	GATE	MAN	3	E	P	LO	FAI	NO	1	OC-1	0	C-10	
4-710B	4	GATE	MAN	3	E	P	LO	FAI	NO	1	OC-1	0	C-10	
4-770A	2	GATE	MAN	3	E	P	LO	FAI	NO	1	OC-1	0	C-7	
4-770B	2	GATE	MAN	3	E	P	LO	FAI	NO	1	OC-1	0	A-9	
4-770C	2	GATE	MAN	3	E	P	LO	FAI	NO	1	OC-1	0	C-7	
4-770D	2	GATE	MAN	3	E	P	LO	FAI	NO	1	OC-1	0	A-8	
4-787A	16	GATE	MAN	3	B	P	NO	FAI	NO	3	---	0	C-10	

SYSTEM
TITLE AUX. COOL. COMP. COOL (ACCC)PROGRAM
TITLE VALVE TEST PROGRAMCHART
TITLE E-503188TABLE 1
TESTS TO CODE

FLORIDA POWER & LIGHT COMPANY

VALVE NUMBER	SIZE	TYPE	ACTU.	CODE CL.	CODE CAT.	ACT/ PAS	NORM. POS.	FAIL- URE MODE	REM. POS. IND.	TEST PER.	ISI TESTS	RRB NO.	VALVE COORD	REMARKS
4-787C	16	GATE	MAN	3	B	P	NO	FAI	NO	3	---	0	C-12	
4-787E	16	GATE	MAN	3	B	P	NO	FAI	NO	3	---	0	C-15	
4-787F	16	GATE	MAN	3	B	P	NO	FAI	NO	3	---	0	C-15	

NOTE:

NO TABLE II VALVES

SYSTEM
TITLE

AUX. COOL. COMP. COOL. (ACCC)

PROGRAM
TITLE

VALVE TEST PROGRAM

CHART
TITLE

E-503188

TABLE I
TESTS TO CODE

FLORIDA POWER & LIGHT COMPANY

VALVE NUMBER	SIZE	TYPE	ACTU.	CODE CL.	CODE CAT.	ACT/ PAS	NORM. POS.	FAIL- URE MODE	REM. POS. IND.	TEST PER.	ISI TESTS	RIIR NO.	VALVE COORD	RE-MARKS
4-752A	14	GATE	MAN	2	E	P	LO	FAI	NO	1	OC-1	0	E-5	
4-752B	14	GATE	MAN	2	E	P	LO	FAI	NO	1	OC-1	0	G-5	
4-754A	10	GATE	MAN	2	E	P	LO	FAI	NO	1	OC-1	0	F-8	
4-754B	10	GATE	MAN	2	E	P	LO	FAI	NO	1	OC-1	0	H-8	
4-757A	10	GATE	MAN	2	E	P	LO	FAI	NO	1	OC-1	0	F-9	
4-757B	10	GATE	MAN	2	E	P	LO	FAI	NO	1	OC-1	0	H-9	
4-759A	10	GATE	MAN	2	E	P	LO	FAI	NO	1	OC-1	0	F-10	
4-759B	10	GATE	MAN	2	E	P	LO	FAI	NO	1	OC-1	0	H-10	

SYSTEM
TITLE AUX. COOL. RES. HEAT REM. (RIIR)PROGRAM
TITLE VALVE TEST PROGRAMCHART
TITLE F-503194TABLE 1
TESTS TO CODE

FLORIDA POWER & LIGHT COMPANY

VALVE NUMBER	SIZE	TYPE	ACTU.	CODE CL.	CODE CAT.	ACT/ PAS	NORM. POS.	FAIL- URE MODE	REM. POS. IND.	TEST PER.	ISI TESTS	RIB NO.	VALVE COORD	REMARKS
RV-3441	4	RELIEF	SELF	3	C	A	NC	--	NO	1	TF-1	--	E-12	
RV-3442	4	RELIEF	SELF	3	C	A	NC	--	NO	1	TF-1	--	F-12	
4-10-083	4	CHECK	SELF	3	C	A	NC	--	NO	3	EF-1	--	E-12	
4-10-085	4	CHECK	SELF	3	C	A	NC	--	NO	3	EF-1	--	E-12	
4-10-087	4	CHECK	SELF	3	C	A	NC	--	NO	3	EF-1	--	F-12	
4-10-82A	4	GLOBE	MAN	3	E	P	LO	FAI	NO	1	OC-1	0	E-11	
4-10-82B	4	GLOBE	MAN	3	E	P	LO	FAI	NO	1	OC-1	0	E-11	
4-10-84A	4	GLOBE	MAN	3	E	P	LO	FAI	NO	1	OC-1	0	E-11	
4-10-84B	4	GLOBE	MAN	3	E	P	LO	FAI	NO	1	OC-1	0	E-11	
4-10-86A	4	GLOBE	MAN	3	E	P	LO	FAI	NO	1	OC-1	0	F-11	
4-10-86B	4	GLOBE	MAN	3	E	P	LO	FAI	NO	1	OC-1	0	F-11	

SYSTEM
TITLE

STEAM SYSTEM

CHART
TITLE

F-502027

PROGRAM
TITLE

VALVE TEST PROGRAM

TABLE I
TESTS TO CODE

FLORIDA POWER & LIGHT COMPANY

VALVE NUMBER	SIZE	TYPE	ACTU.	CODE CL.	CODE CAT.	ACT/ PAS	NORM. POS.	FAIL- URE MODE	REM. POS. IND.	TEST PER.	ISI TESTS	RUN NO.	VALVE (CODE)	REMARKS
4-20-140	4	CHECK	S/A	2	C	A	NC	--	NO	3	EF-1	--	B-10	
4-20-240	4	CHECK	S/A	2	C	A	NC	--	NO	3	EF-1	--	B-10	
4-20-340	4	CHECK	S/A	2	C	A	NC	--	NO	3	EF-1	--	C-11	
4-20-401	8	CHECK	S/A	3	C	A	NC	--	NO	3	EF-1	--	A-11	
4-20-139	1	GLOBE	MAN	2	E	P	LO	FAI	NO	1	OC-1	0	C-10	
4-20-239	1	GLOBE	MAN	2	E	P	LO	FAI	NO	1	OC-1	0	C-10	
4-20-339	1	GLOBE	MAN	2	E	P	LO	FAI	NO	1	OC-1	0	C-10	
4-20-141	4	GLOBE	MAN	3	E	P	LO	FAI	NO	1	OC-1	0	B-11	
4-20-241	4	GLOBE	MAN	3	E	P	LO	FAI	NO	1	OC-1	0	B-12	
4-20-341	4	GLOBE	MAN	3	E	P	LO	FAI	NO	1	OC-1	0	C-12	
4-20-142	6	GLOBE	MAN	3	E	P	LO	FAI	NO	1	OC-1	0	B-12	

SYSTEM
TITLE

CONDENSATE AND FEEDWATER

PROGRAM
TITLE

VALVE TEST PROGRAM

CHART
TITLE

F-502028

TABLE I
TESTS TO CODE

FLORIDA POWER & LIGHT COMPANY

VALVE NUMBER	SIZE	TYPE	ACTU.	CODE CL.	CODE CAT.	ACT/ PAS	NORM. POS.	FAIL- URE MODE	REM. POS. IND.	TEST PER.	ISI TESTS	RFB NO.	VALVE COORD	REMARKS
4-20-242	6	GLOBE	MAN	3	E	P	LO	FAI	NO	1	OC-1	0	C-12	
4-20-342	6	GLOBE	MAN	3	E	P	LO	FAI	NO	1	OC-1	0	D-12	
4-20-144	6	GLOBE	MAN	3	E	P	LO	FAI	NO	1	OC-1	0	B-13	
4-20-244	6	GLOBE	MAN	3	E	P	LO	FAI	NO	1	OC-1	0	C-13	
4-20-344	6	GLOBE	MAN	3	E	P	LO	FAI	NO	1	OC-1	0	D-13	
4-20-400	10	GLOBE	MAN	3	E	P	LO	FAI	NO	1	OC-1	0	A-12	

NOTE:

NO TABLE 11 VALVES

SYSTEM
TITLE

CONDENSATE AND FEEDWATER

PROGRAM
TITLE

VALVE TEST PROGRAM

TABLE 1
TESTS TO CODECHART
TITLE

F-502028

FLORIDA POWER & LIGHT COMPANY

VALVE NUMBER	SIZE	TYPE	ACTU.	CODE CL.	CODE CAT.	ACT/ PAS	NORM. POS.	FAIL- URE MODE	REN. POS. IND.	TEST PER.	ISI TESTS	RUN NO.	VALVE COORD	REMARKS
4-40-204	2	GATE	MAN	2	AE	A	LC	FAI	NO	2 1 1	EF-2 OC-1 SLT-1	1	A-10	
4-40-205	2	CHECK	SELF	2	AC	A	NC	--	NO	2 1	EF-2 SLT-1	2	A-11	
4-40-203	2	GATE	MAN	2	BE	A	LC	FAI	NO	2 1	EF-2 OC-1	3	A-10	
CV-4-2803	2	PLUG	A/O	2	AE	P	LO	FO	NO	1 1	OC-1 SLT-1	0	C-8	

SYSTEM
TITLE

LUBE OIL, SERVICE & INSTR. AIR

CHART
TITLE

F-502030

PROGRAM
TITLE

VALVE TEST PROGRAM

TABLE 1
TESTS TO CODE

FLORIDA POWER & LIGHT COMPANY

VALVE NUMBER	SIZE	TYPE	ACTU.	CODE CL.	CODE CAT.	ACT/ PAS	NORM. POS.	FAIL- URE MODE	REM. POS. IND.	TEST PER.	ISI TESTS	RRB NO.	VALVE COORD	REMARKS
CV-4-2908	10	BUTFY	A/O	2	B	A	NC	FO	YES	3 3 3	EF-1 EF-7 EST-3	--	C-11	
CV-4-2810	6	PLUG	A/O	2	B	A	NO	FC	YES	3 3 3	EF-1 EF-7 EST-3	--	A-11	
CV-4-2812	6	PLUG	A/O	2	B	A	NO	FC	YES	3 3 3	EF-1 EF-7 EST-3	--	B-11	
CV-4-2814	6	PLUG	A/O	2	B	A	NO	FC	YES	3 3 3	EF-1 EF-7 EST-3	--	B-11	
4-10-567	2	CHECK	SELF	2	AC	P	NC	--	NO	1	SLT-1	0	D-6	
<p><u>NOTE:</u></p> <p>NO TABLE II VALVES</p>														

SYSTEM
TITLE PRIMARY MAKEUP AND CONT. COOL.PROGRAM
TITLE VALVE TEST PROGRAMTABLE 1
TESTS TO CODECHART
TITLE F-502036

FLORIDA POWER & LIGHT COMPANY

VALVE NUMBER	SIZE	TYPE	ACTU.	CODE CL.	CODE CAT.	ACT/ PAS	NORM. POS.	FAIL- URE MODE	REM. POS. IND.	TEST PER.	ISI TESTS	RIBB NO.	VALVE COORD	REMARKS
HV-4-1	2	DIAPH	MAN	2	E	A	LC	FAI	NO	2 1	EF-2 OC-1	1	F-10	
HV-4-2	2	DIAPH	MAN	2	AE	A	LC	FAI	NO	2 1 1	EF-2 OC-1 SLT-1	2	F-10	
HV-4-3	2	DIAPH	MAN	2	E	A	LC	FAI	NO	2 1	EF-2 OC-1	1	F-10	
HV-4-4	2	DIAPH	MAN	2	AE	A	LC	FAI	NO	2 1 1	EF-2 OC-1 SLT-1	2	F-10	
POV-4-2600	48	BUTFY	AO	2	A	P	NC	FC	YES	1	SLT-1	0	B-2	
POV-4-2601	48	BUTFY	AO	2	A	P	NC	FC	YES	1	SLT-1	0	B-3	
POV-4-2602	54	BUTFY	AO	2	A	P	NC	FC	YES	1	SLT-1	0	D-2	
POV-4-2603	54	BUTFY	AO	2	A	P	NC	FC	YES	1	SLT-1	0	D-3	

SYSTEM
TITLE

CONTAINMENT VENTILATION

PROGRAM
TITLE

VALVE TEST PROGRAM

CHART
TITLE

F-502037

TABLE 1
TESTS TO CODE

Attachment 2 - Section III

Revised Program pages and Tables with the word "exemption" deleted.

TABLE OF CONTENTS

Section I. Valve Test Program

- I.A. List of Drawings
- I.B. List of Valve Categories
- I.C. List of Definitions
- I.D. List of Valve Table Symbols
- I.E. List of Category (A-B-C-E) Valves:
Table I - Tests to Code
- I.F. List of Category (A) Valves:
Table I.A. - Seat Leakage Rates
- I.G. List of Category (A-B-C) Valves:
Table II - To Code and Relief Request
- I.H. List of Exclusions:
Table III
- I.I. Relief Request Basis
Attachment 3-1

Section II. Pump Test Program

- II.A. Table IV - Test Parameters

Section III. Inservice Inspection Program

III.A. Introduction to Tables

- A.1. Table I - Class I Components and Systems
- A.2. Table II - Class II Components and Systems
- A.3. Table III - Pressure Tests, Class I, II, and III Components and Systems

III.B. 40-Month Period

II. PUMP TEST PROGRAM

II.A. Table IV - Test Parameters

This subsection outlines the pumps which are provided with an emergency power source.

I. G. LIST OF CATEGORY (A-B-C): LEGEND FOR TABLE II -
EXCEPTIONS TO CODE REQUIREMENTS DETERMINED TO BE
IMPRACTICAL... PARAGRAPH 50.55a(g) (5) (iii).

LEGEND - The LEGEND in Sub-Section I. E. applies
to this Table.

NOTES:

- 1) Notes 1, 2 and 3 of Sub-Section I. E. apply
to this Table.
- 2) Each valve in Table II is either
 - a) Partially tested to code or,
 - b) Relief requested and supported by Relief
Request Basis including Alternate Tests.



1 2 3 4 5 6 7 8 9 10 11 12 13 14 15 16 17 18 19 20 21 22 23 24 25 26 27 28 29 30 31 32 33 34 35 36 37 38 39 40 41 42 43 44 45 46 47 48 49 50 51 52 53 54 55 56 57 58 59 60 61 62 63 64 65 66 67 68 69 70 71 72 73 74 75 76 77 78 79 80 81 82 83 84 85 86 87 88 89 90 91 92 93 94 95 96 97 98 99 100

)

I.E. LIST OF EXCLUSIONS: TABLE III - EXCLUSIONS TO CODE (IWV-1300).

- Vent Valves
- Drain Valves
- Instrument Valves
- Test Valves
- Maintenance Valves
- Non-Nuclear Safety Valves

This table of valves is not included in this report. They are identified and included in the plant records.

FLORIDA POWER & LIGHT COMPANY

VALVE NUMBER	SIZE	TYPE	ACTU.	CODE CL.	CODE CAT.	ACT/ PAS.	NORM. POS.	FAIL- URE MODE	REM. POS. IND.	TEST PER.	ISI TESTS	RIB NO.	VALVE COORD	REMARKS
4-298A	2	CHECK	SA	1	AC	A	NO	--	NO	1 1	EF-2 SLT-1	13	A-20	
4-298B	2	CHECK	SA	1	AC	A	NO	--	NO	1 1	EF-2 SLT-1	13	A-19	
4-298C	2	CHECK	SA	1	AC	A	NO	--	NO	1 1	EF-2 SLT-1	13	A-18	
4-312C	3	CHECK	SA	1	AC	A	NO	--	NO	1 1	EF-2 SLT-1	14	C-17	

SYSTEM
TITLE

CHEM. VAL. CONT. (CVCS)

CHART
TITLE

F-503184

PROGRAM
TITLE

VALVE TEST PROGRAM

TABLE II
TO CODE AND
RELIEF REQUEST

FLORIDA POWER & LIGHT COMPANY

FLORIDA POWER & LIGHT COMPANY														
VALVE NUMBER	SIZE	TYPE	ACTU.	CODE CL.	CODE CAT.	ACT/ PAS	NORM. POS.	FAIL- URE MODE	REM. POS. IND.	TEST PER.	ISI TESTS	RIB NO.	VALVE COORD	REMARKS
MOV-878A	4	GATE	MO	2	B	A	NO	FAI	YES	1	EF-2	10	C-7	
MOV-878B	4	GATE	MO	2	B	A	NO	FAI	YES	1	EST-3	10	C-7	
										1	EF-2			
										1	EST-3			
MOV-4-864A	16	GATE	MO	2	B/E	A	LO	FAI	YES	1	EF-2	11	D-2	
										1	EST-4			
										1	OC-1			
MOV-4-864B	16	GATE	MO	2	B/E	A	LO	FAI	YES	1	EF-2	11	D-2	
										1	EST-4			
										1	OC-1			
MOV-4-862A	14	GATE	MO	2	B/E	A	LO	FAI	YES	1	EF-2	12	A-5	
										1	EST-5			
										1	OC-1			
MOV-4-862B	14	GATE	MO	2	B/E	A	LO	FAI	YES	1	EF-2	12	A-5	
										1	EST-5			
										1	OC-1			
SV-4-2905	2	GATE	SO	2	B	A	NC	FAI	NO	1	EF-2	13	C-10	
SV-4-2906	2	GATE	SO	2	B	A	NC	FAI	NO	1	EF-2	13	C-10	
SV-4-2907	2	GATE	SO	2	B	A	NC	FAI	NO	1	EF-2	13	C-9	

SYSTEM TITLE SAFETY INJECTION SYSTEM (SIS)

CHART TITLE E-503185

PROGRAM TITLE VALVE TEST PROGRAM

TABLE II
TO CODE AND
RELIEF REQUEST

FLORIDA POWER & LIGHT COMPANY

VALVE NUMBER	SIZE	TYPE	ACTU.	CODE CL.	CODE CAT.	ACT/ PAS	NORM. POS.	FAIL- URE MODE	REM. POS. IND.	TEST PERC	ISI TESTS	RRI NO.	VALVE COORD	REMARKS
SV-4-2908	2	GATE	SO	2	B	A	NC	FAI	NO	1	EF-2	13	C-9	
SV-4-2909	2	GATE	SO	2	B	A	NC	FAI	NO	1	EF-2	13	C-9	
SV-4-2910	2	GATE	SO	2	B	A	NC	FAI	NO	1	EF-2	13	C-9	
4-2918	2	CHECK	SA	2	C	A	NC	--	NO	1	*	14	B-10	*See Alternate Testing in Request for Relief Basis ↓
4-2919	2	CHECK	SA	2	C	A	NC	--	NO	1	*	14	B-9	
4-2920	2	CHECK	SA	2	C	A	NC	--	NO	1	*	14	B-9	
4-2921	2	CHECK	SA	2	C	A	NC	--	NO	1	*	14	B-10	
4-2922	2	CHECK	SA	2	C	A	NC	--	NO	1	*	14	B-9	
4-2923	2	CHECK	SA	2	C	A	NC	--	NO	1	*	14	B-9	
4-874A	2	CHECK	SA	1	C	A	NC	--	NO	1	EF-2	15	D-17	
4-874B	2	CHECK	SA	1	C	A	NC	--	NO	1	EF-2	15	D-17	

SYSTEM
TITLE

SAFETY INJECTION SYSTEM (SIS)

PROGRAM
TITLE

VALVE TEST PROGRAM

CHART
TITLE

E-503185

TABLE II
TO CODE AND
RELIEF REQUEST

FLORIDA POWER & LIGHT COMPANY

VALVE NUMBER	SIZE	TYPE	ACTU.	CODE CL.	CODE CAT.	ACT/ PAS	NORM. POS.	FAIL- URE MODE	REM. POS. IND.	TEST PER.	ISI TESTS	RRI NO.	VALVE COORD	REMARKS
4-873A	2	CHECK	SA	1	C	A	NC	--	NO	1	EF-2	16	C-15	
4-873B	2	CHECK	SA	1	C	A	NC	--	NO	1	EF-2	16	C-15	
4-873C	2	CHECK	SA	1	C	A	NC	--	NO	1	EF-2	16	C-14	
4-875D	10	CHECK	SA	1	C	A	NC	--	NO	1	EF-2	17	B-15	
4-875E	10	CHECK	SA	1	C	A	NC	--	NO	1	EF-2	17	B-13	
4-875F	10	CHECK	SA	1	C	A	NC	--	NO	1	EF-2	17	B-11	
4-890A	6	CHECK	SA	2	C	A	NC	--	NO	1	*	18	B-8	* See Alternate Testing in Request for Relief Basis
4-890B	6	CHECK	SA	2	C	A	NC	--	NO	1	*	18	B-8	

SYSTEM
TITLE

SAFETY INJECTION SYSTEM (SIS)

PROGRAM
TITLE

VALVE TEST PROGRAM

CHART
TITLE

E-503185

TABLE II
TO CODE AND
RELIEF REQUEST

FLORIDA POWER & LIGHT COMPANY

VALVE NUMBER	SIZE	TYPE	ACTU.	CODE CL.	CODE CAT.	ACT/ PAS	NORM. POS.	FAIL- URE MODE	REM. POS. IND.	TEST PER.	ISI TESTS	RIB NO.	VALVE COORD	REMARKS
4-753A	10	CHECK	SA	2	C	A	NC	--	NO	3	EF-1	--	F-7	
4-753B	10	CHECK	SA	2	C	A	NC	--	NO	3	EF-1	--	H-7	
HCV-4-758	12	BUTFY	A/O	2	E	P	LO	FO	NO	1	OC-1	0	G-11	
4-741A	2	GLOBE	MAN	2	B/E	A	LO	FAI	NO	3 1	EF-1 OC-1	--	D-11	
MOV-4-744A	10	GATE	MO	2	B	A	NC	FAI	YES	2 2	EF-2 EST-3	1	B-12	
MOV-4-744B	10	GATE	MO	2	B	A	NC	FAI	YES	2 2	EF-2 EST-3	1	B-12	

SYSTEM
TITLE AUX. COOL. RES. HEAT REM. (RIHR)PROGRAM
TITLE

VALVE TEST PROGRAM

GRANT
TITLE F-503194TABLE 1
TESTS TO CODE

2 1 1 0

FLORIDA POWER & LIGHT COMPANY

VALVE NUMBER	SIZE	TYPE	ACTU.	CODE CL.	CODE CAT.	ACT/ PAS	NORM. POS.	FAIL- URE MODE	REM. POS. IND.	TEST PER.	ISI TESTS	RRR NO.	VALVE COORD.	REMARKS
MOV-4-751	14	GATE	MO	1	AE	P	LC	FAI	YES	1 1	SLT-1 OC-1	0 0	C-5	
MOV-4-750	14	GATE	MO	1	B	P	NC	FAI	YES	---	---	0	D-5	

SYSTEM
TITLE

AUX. COOL. RES. HEAT REM.

CHART
TITLE

F-503194

PROGRAM
TITLE

VALVE TEST PROGRAM

TABLE II
TO CODE AND
RELIEF REQUEST



20

FLORIDA POWER & LIGHT COMPANY

VALVE NUMBER	SIZE	TYPE	ACTU.	CODE CL.	CODE CAT.	ACT/ PAS	NORM. POS.	FAIL- URE MODE	REM. POS. IND.	TEST PER.	ISI TESTS	RRD NO.	VALVE COORD	REMARKS
4-40-336	2	CHECK	SA	2	AC	A	NO	--	NO	1 1	EF-2 SLT-1	4	C-8	

SYSTEM
TITLE LUBE OIL SERVICE & INSTR. AIRCHART
TITLE F-502030PROGRAM
TITLE

VALVE TEST PROGRAM

TABLE II
TO CODE AND
RELIEF REQUEST



FLORIDA POWER & LIGHT COMPANY

VALVE NUMBER	SIZE	TYPE	ACTU.	CODE CL.	CODE CAT.	ACT/ PAS	NORM. POS.	FAIL- URE MODE	REM. POS. IND.	TEST PER.	ISI TESTS	RIB NO.	VALVE COORD	REMARKS
4-11-003	2	CHECK	S/A	2	A/C	A	NO	--	NO	1 1	EF-2 SLT-1	3	D-7	

SYSTEM
TITLE - CONTAINMENT VENTILATION SYSTEM

CHART
TITLE - F-502037

PROGRAM
TITLE

VALVE TEST PROGRAM

TABLE II
TO CODE AND
RELIEF REQUEST

