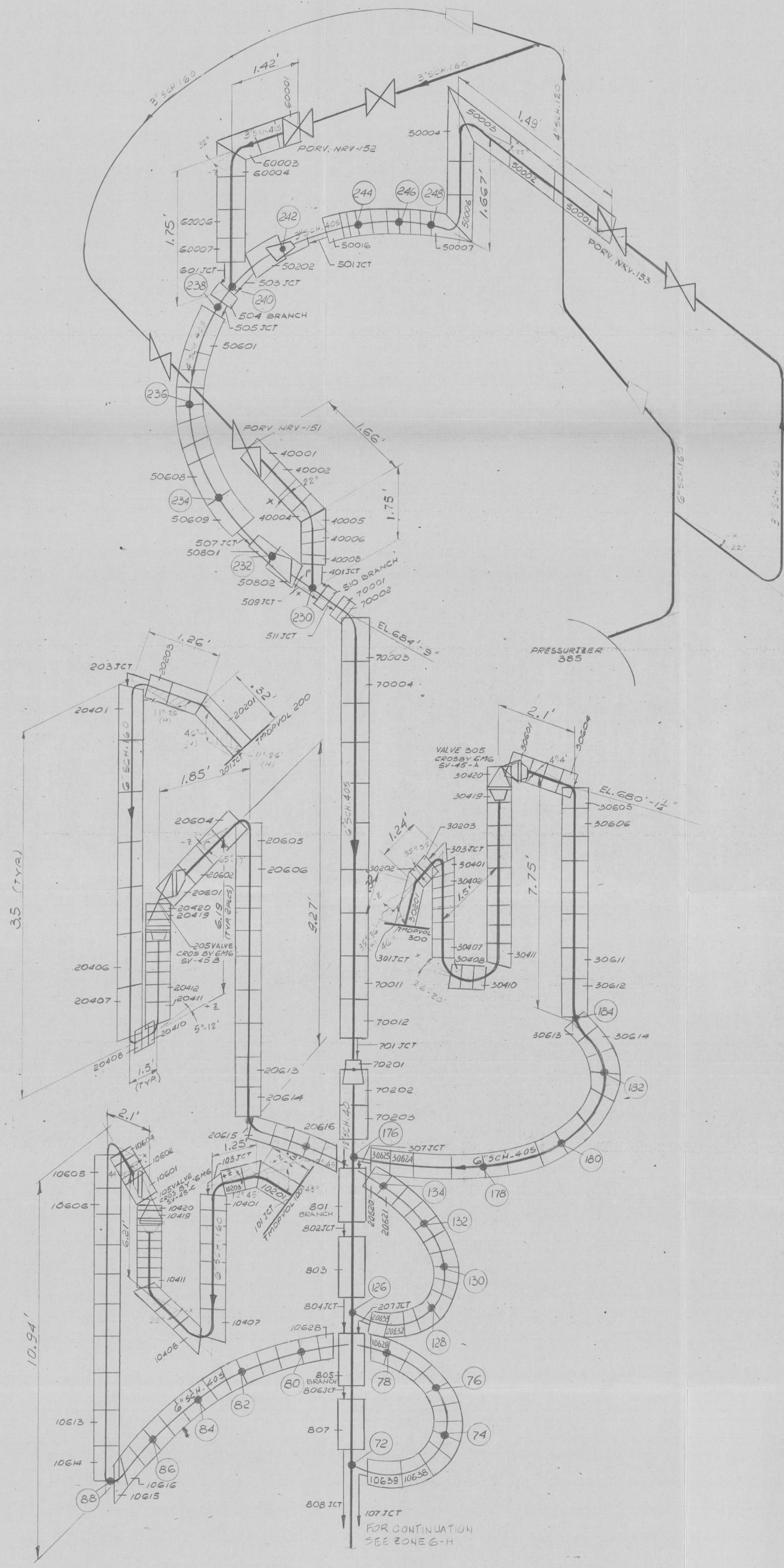
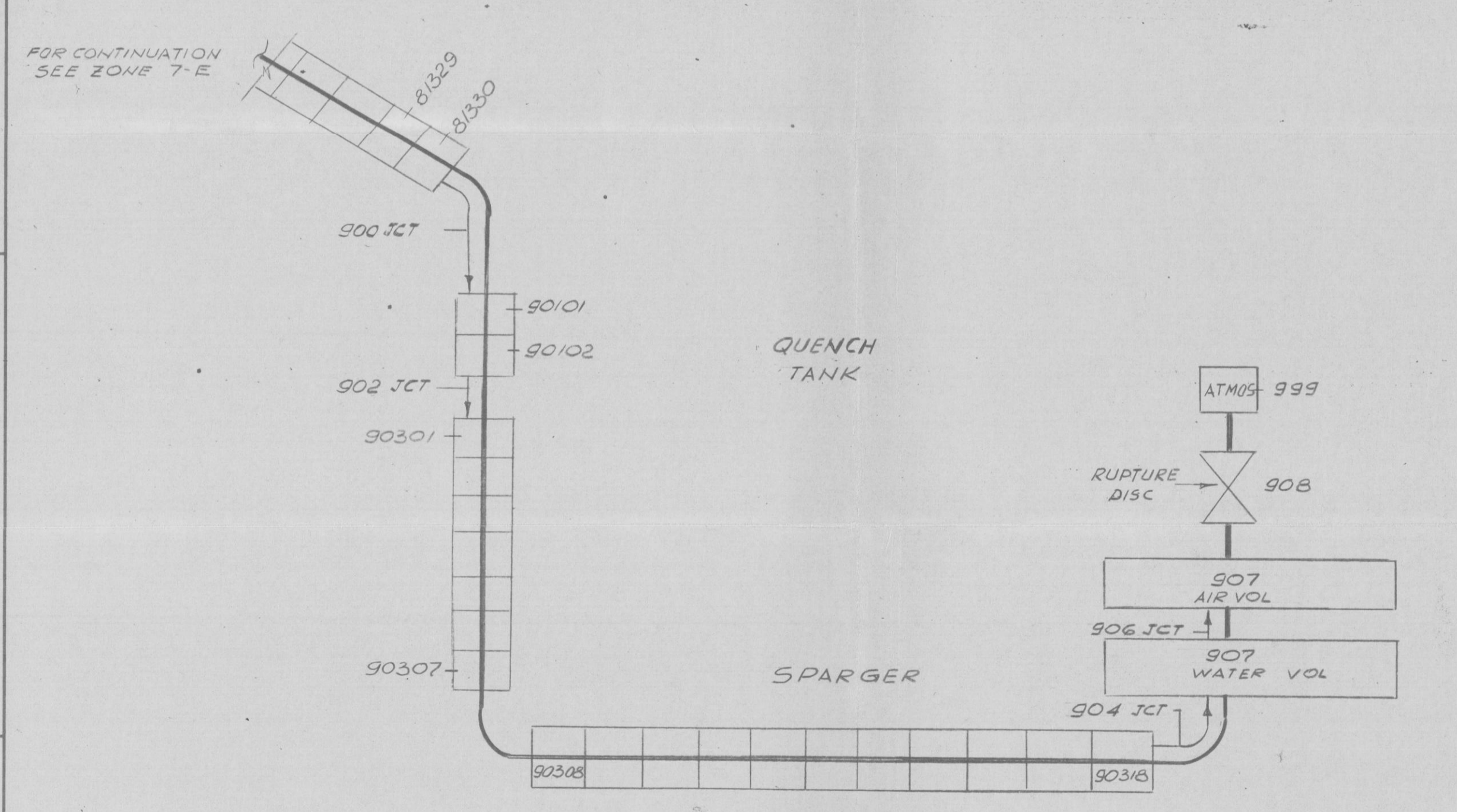
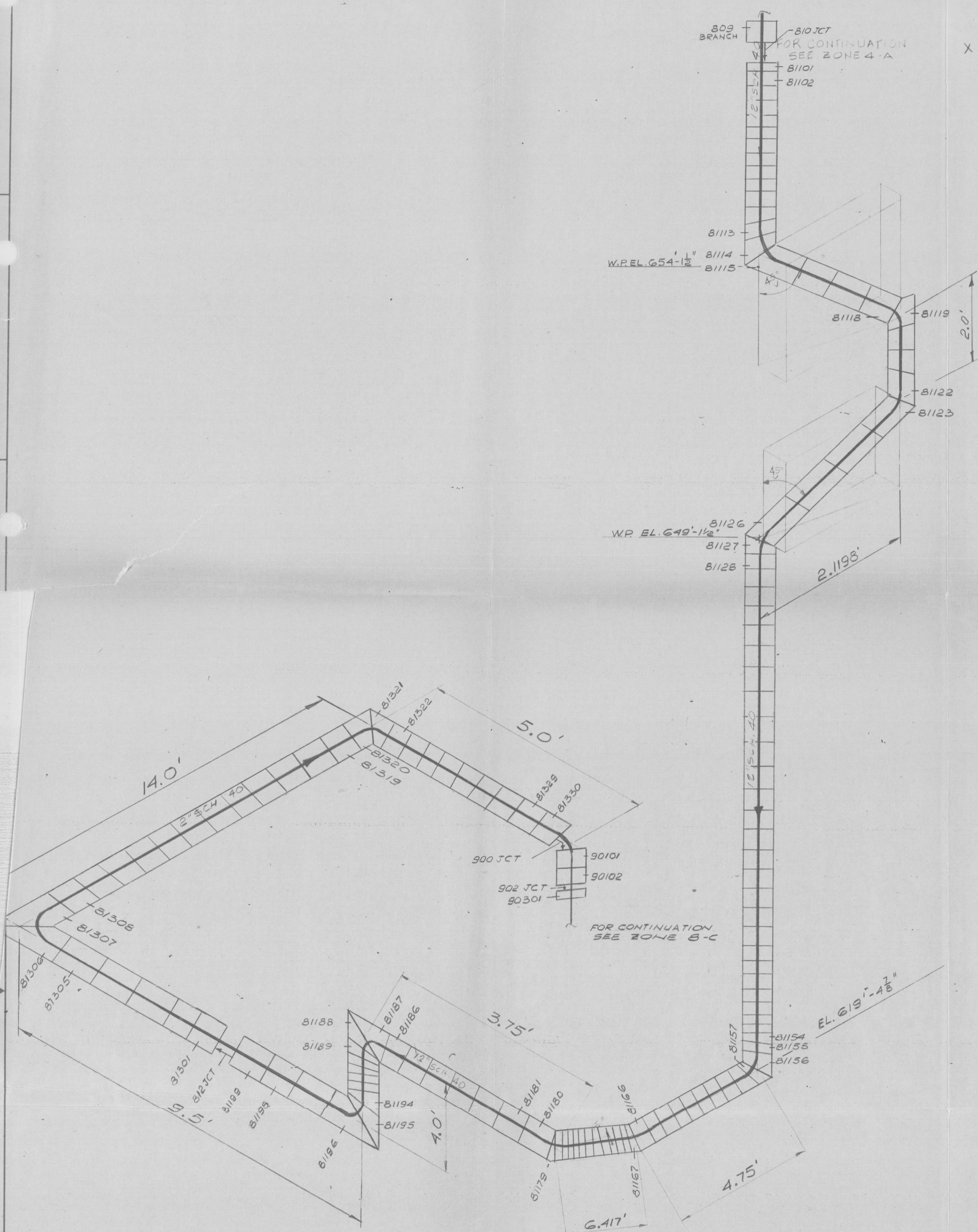


LIST OF MATERIAL				
ITEM	IDENT NUMBER	DRAWING NUMBER	DESCRIPTION / MATERIAL	QTY



PIPE SIZE	PIPE SCHEDULE	FLOW AREA (FT ²)
3"	40	.0513
3"	160	.0376
4"	40	.0884
4"	120	.0716
6"	40	.2007
6"	160	.1465
12"	40	.7771

PRC
APERTURE
CARD

8312210227-01

REV	DATE	DCO	ZONE	DESCRIPTION	DRAWN	CHKD	ANAL	ENGR	DWG. CON.
REVISIONS									
UNLESS OTHERWISE SPECIFIED									
DIMENSIONS ARE IN INCHES									
TOLERANCES ON									
FRACTIONS DECIMALS ANGLES									
± ± ±									
FINISH									
SCALE									
DRAWN ON NETT ASSY									
DESIGNED									
DATE									
DRAWN									
DATE									
ANALYZED									
DATE									
CHECKED									
DATE									
PROJECT NO.									
DRAWING NO.									
TITLE									
RELAP MODEL - SV									
DISCHARGE - DRAINED									
LOOPSEAL MOD									
D.C. COOL NUC POWER PLANT UNIT 2									
3364 E-8597									

TELEDYNE
ENGINEERING SERVICES

WALTHAM, MASS.

PROJECT NO. 3364

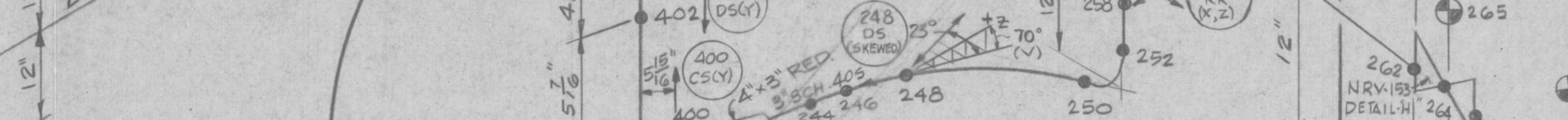
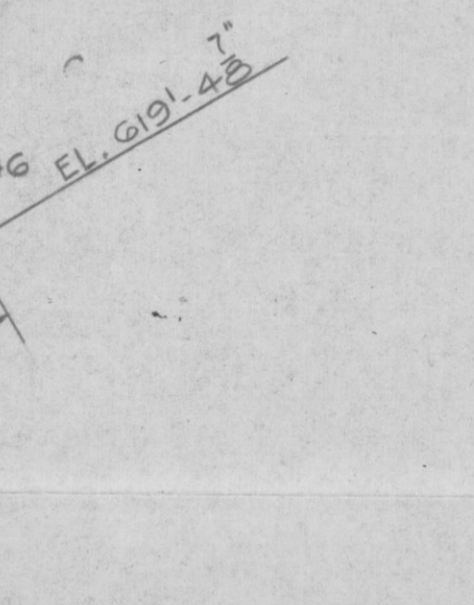
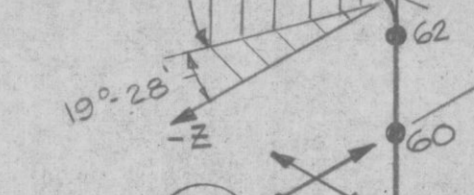
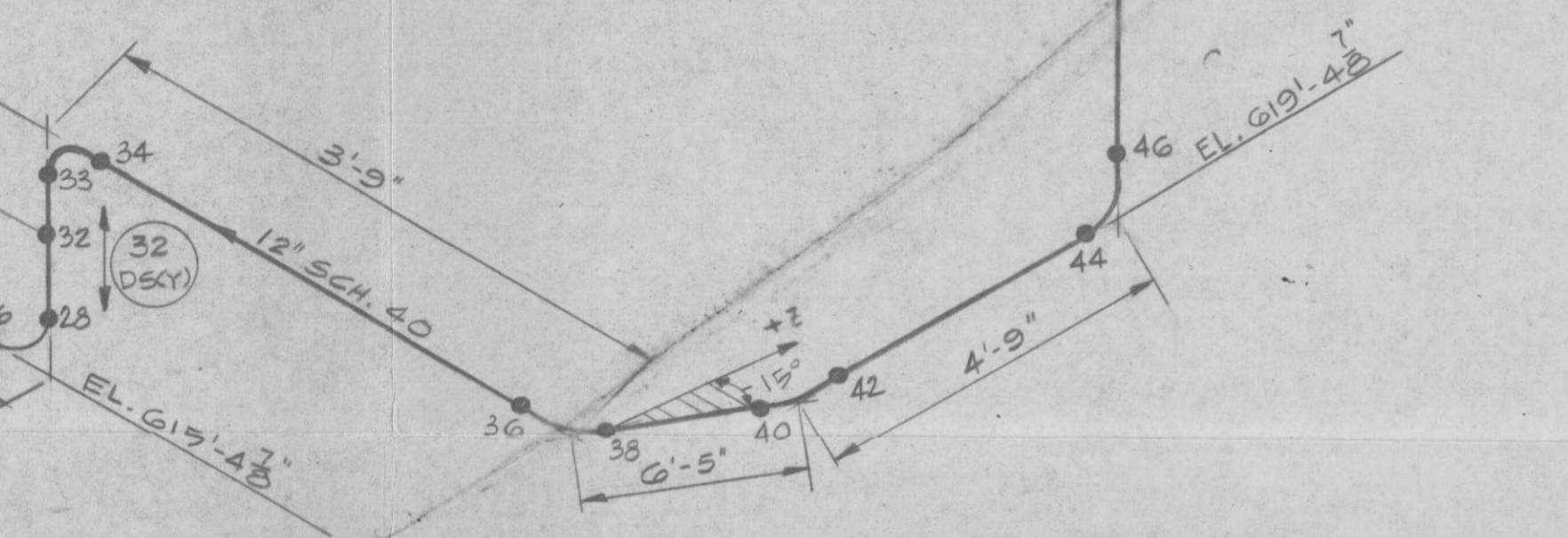
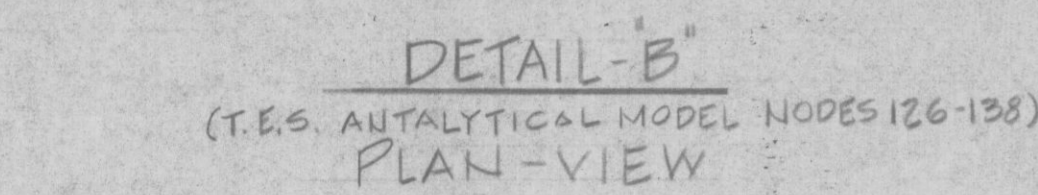
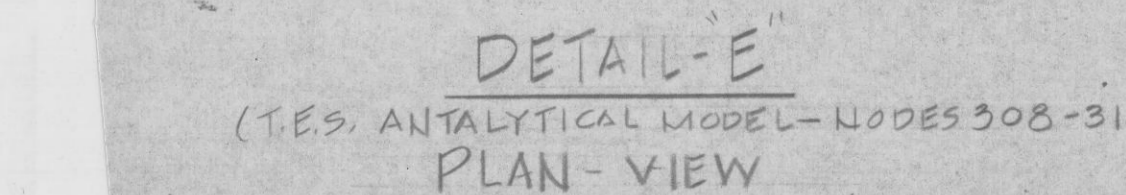
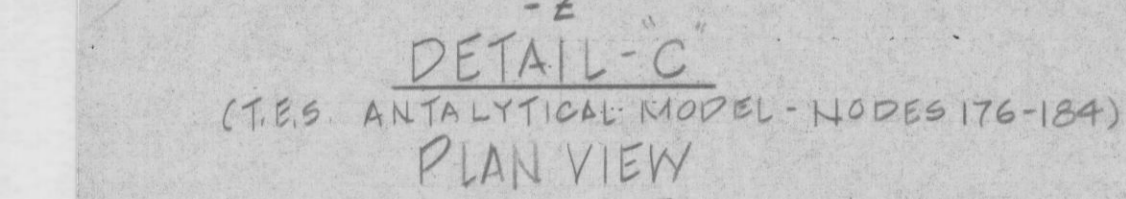
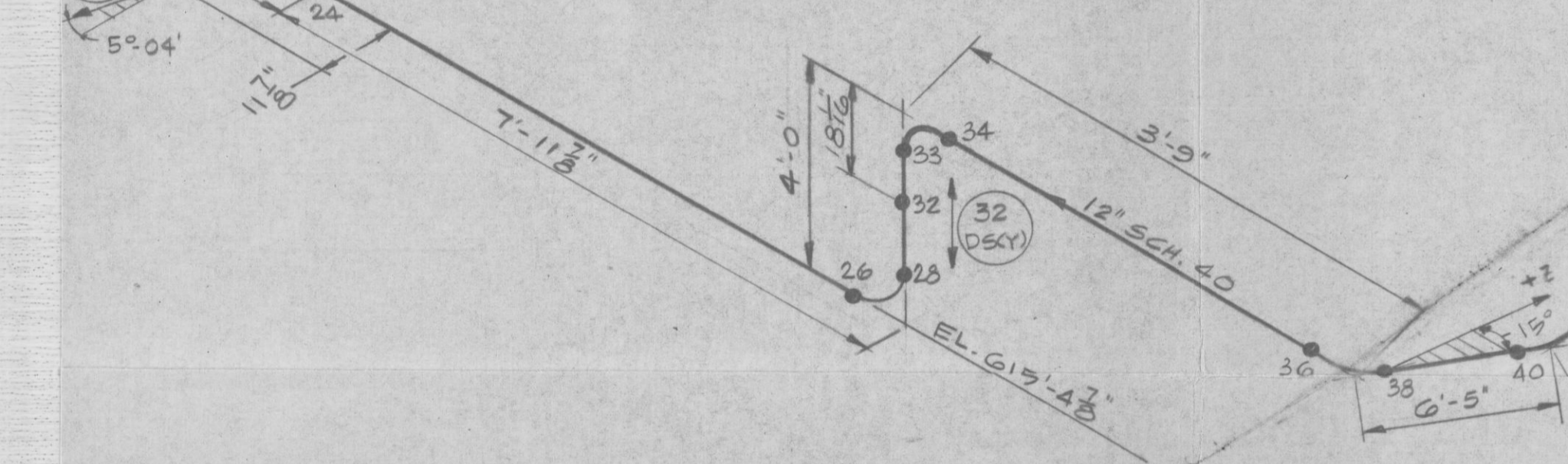
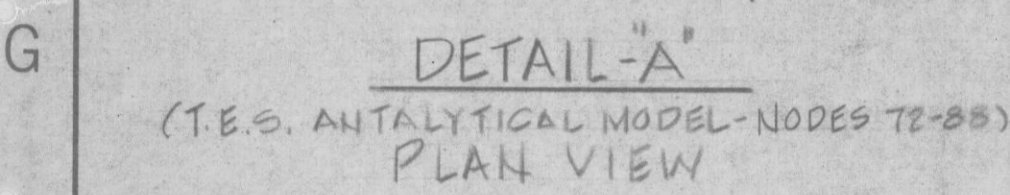
DRAWING NO. E-8597


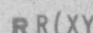
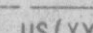
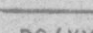
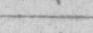
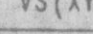
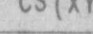

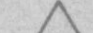
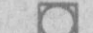
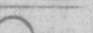
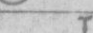
TITLE RELAP MODEL - SV

DISCHARGE - DRAINED

LOOPSEAL MOD

D.C. COOL NUC POWER PLANT UNIT 2



PIPE SCHEDULE				MATERIAL		TYPE	
LINE SIZE		PIPE SCHEDULE		MATERIAL		TYPE	
G-23	3"	40S	SA-312	304 SEAMLESS	SYMBOL	LEGEND	
	4"	40S	SA-312	304 SEAMLESS		RESTRAINT DESIGNATION	
	6"	40S	SA-312	304 SEAMLESS		RIGID RESTRAINT	
	12"	40	SA-358 CLASS I	316 WELDED		UNIDIRECTIONAL SUPPORT	
M-15	3"	160	SA-316	304 SEAMLESS		DYNAMIC SNUBBER	
	4"	120	SA-376	316 SEAMLESS		VARIABLE SPRING SUPPORT	
	6"	160	SA-376	316 SEAMLESS		CONSTANT FORCE SUPPORT	
						ANCHOR	
						MODE NUMBER-SEE TABLE	
						NOTE NUMBER	
						COLUMN LINE	
						TANGENT INTERSECT POINT	
						JOINT IDENTIFICATION NUMBER	

SUPPORT NODE NUMBER	SUPPORT MARK NUMBER
16	2-GRC-R-585
22	2-GRC-S-624
24	2-GRC-R-586
32	2-GRC-S-587
48	2-GRC-R-588
50	2-GRC-C-590
60	2-GRC-R-591
73	2-GRC-R-600
78	2-GRC-S-632
84	2-GRC-R-633
95	2-GRC-S-598
99	2-GRC-C-593
101	2-GRC-S-592
129	2-GRC-R-616
132	2-GRC-S-631
141	2-GRC-S-599
147	2-GRC-C-595
149	2-GRC-S-594
182	2-GRC-S-630
189	2-GRC-C-597
193	2-GRC-S-596
222	2-GRC-R-601
228	2-GRC-S-629
238	2-GRC-R-614
248	2-GRC-S-611
258	2-GRC-R-612
261	2-GRC-C-613
274	2-GRC-C-610
290	2-GRC-C-602
304	2-GRC-C-608
306	2-GRC-S-609
312	2-GRC-R-607
816	2-GRC-C-606
326	2-GRC-R-605
400	2-GRC-C-627
402	2-GRC-S-626

NOTES

1. ALL ELBOWS ARE LONG RADIUS (1.5D) EXCEPT WHERE NOTED.
2. FOR DETAILS "A" THROUGH "E" ALL DIMENSIONS ARE IN FEET UNLESS OTHERWISE SPECIFIED.

REFERENCE DRAWINGS

2-GR-C-22, SHEETS 1 & 2
2-GR-C-23, SHEETS 1, 2, & 3
2-GR-C-24
2-GR-C-25
2-GR-C-26
2-GR-C-27
2-RC-22 SHEETS 1 & 2
2-RC-23 SHEETS 1, 2 & 3
2-RC-24
2-RC-25
2-RC-26
2-RC-27
2-5435-8

2	6-883	49355	A-3 K-1-2	ADD REFERENCE DRAWING NO'S REVISED DETAIL	DDL	EDY	Smb	DTG		
				ADDED CLASS 1 MATERIAL SPEC				1/18/73		
		4498	5	ADD INSERTION NODE 141, 142, 143	RS	DDL	Smb	PDH		
REV	DATE	D/C	C/O	NO. 144, 145, 146, 147, 148, 149, 150, 151, 152, 153, 154, 155, 156, 157, 158, 159, 160, 161, 162, 163, 164, 165, 166, 167, 168, 169, 170, 171, 172, 173, 174, 175, 176, 177, 178, 179, 180, 181, 182, 183, 184, 185, 186, 187, 188, 189, 190, 191, 192, 193, 194, 195, 196, 197, 198, 199, 200, 201, 202, 203, 204, 205, 206, 207, 208, 209, 210, 211, 212, 213, 214, 215, 216, 217, 218, 219, 220, 221, 222, 223, 224, 225, 226, 227, 228, 229, 230, 231, 232, 233, 234, 235, 236, 237, 238, 239, 240, 241, 242, 243, 244, 245, 246, 247, 248, 249, 250, 251, 252, 253, 254, 255, 256, 257, 258, 259, 260, 261, 262, 263, 264, 265, 266, 267, 268, 269, 270, 271, 272, 273, 274, 275, 276, 277, 278, 279, 280, 281, 282, 283, 284, 285, 286, 287, 288, 289, 290, 291, 292, 293, 294, 295, 296, 297, 298, 299, 300, 301, 302, 303, 304, 305, 306, 307, 308, 309, 310, 311, 312, 313, 314, 315, 316, 317, 318, 319, 320, 321, 322, 323, 324, 325, 326, 327, 328, 329, 330, 331, 332, 333, 334, 335, 336, 337, 338, 339, 340, 341, 342, 343, 344, 345, 346, 347, 348, 349, 350, 351, 352, 353, 354, 355, 356, 357, 358, 359, 360, 361, 362, 363, 364, 365, 366, 367, 368, 369, 370, 371, 372, 373, 374, 375, 376, 377, 378, 379, 380, 381, 382, 383, 384, 385, 386, 387, 388, 389, 390, 391, 392, 393, 394, 395, 396, 397, 398, 399, 400, 401, 402, 403, 404, 405, 406, 407, 408, 409, 410, 411, 412, 413, 414, 415, 416, 417, 418, 419, 420, 421, 422, 423, 424, 425, 426, 427, 428, 429, 430, 431, 432, 433, 434, 435, 436, 437, 438, 439, 440, 441, 442, 443, 444, 445, 446, 447, 448, 449, 450, 451, 452, 453, 454, 455, 456, 457, 458, 459, 460, 461, 462, 463, 464, 465, 466, 467, 468, 469, 470, 471, 472, 473, 474, 475, 476, 477, 478, 479, 480, 481, 482, 483, 484, 485, 486, 487, 488, 489, 490, 491, 492, 493, 494, 495, 496, 497, 498, 499, 500, 501, 502, 503, 504, 505, 506, 507, 508, 509, 510, 511, 512, 513, 514, 515, 516, 517, 518, 519, 520, 521, 522, 523, 524, 525, 526, 527, 528, 529, 530, 531, 532, 533, 534, 535, 536, 537, 538, 539, 540, 541, 542, 543, 544, 545, 546, 547, 548, 549, 550, 551, 552, 553, 554, 555, 556, 557, 558, 559, 560, 561, 562, 563, 564, 565, 566, 567, 568, 569, 570, 571, 572, 573, 574, 575, 576, 577, 578, 579, 580, 581, 582, 583, 584, 585, 586, 587, 588, 589, 590, 591, 592, 593, 594, 595, 596, 597, 598, 599, 600, 601, 602, 603, 604, 605, 606, 607, 608, 609, 610, 611, 612, 613, 614, 615, 616, 617, 618, 619, 620, 621, 622, 623, 624, 625, 626, 627, 628, 629, 630, 631, 632, 633, 634, 635, 636, 637, 638, 639, 640, 641, 642, 643, 644, 645, 646, 647, 648, 649, 650, 651, 652, 653, 654, 655, 656, 657, 658, 659, 660, 661, 662, 663, 664, 665, 666, 667, 668, 669, 670, 671, 672, 673, 674, 675, 676, 677, 678, 679, 680, 681, 682, 683, 684, 685, 686, 687, 688, 689, 690, 691, 692, 693, 694, 695, 696, 697, 698, 699, 700, 701, 702, 703, 704, 705, 706, 707, 708, 709, 710, 711, 712, 713, 714, 715, 716, 717, 718, 719, 720, 721, 722, 723, 724, 725, 726, 727, 728, 729, 730, 731, 732, 733, 734, 735, 736, 737, 738, 739, 740, 741, 742, 743, 744, 745, 746, 747, 748, 749, 750, 751, 752, 753, 754, 755, 756, 757, 758, 759, 760, 761, 762, 763, 764, 765, 766, 767, 768, 769, 770, 771, 772, 773, 774, 775, 776, 777, 778, 779, 780, 781, 782, 783, 784, 785, 786, 787, 788, 789, 790, 791, 792, 793, 794, 795, 796, 797, 798, 799, 800, 801, 802, 803, 804, 805, 806, 807, 808, 809, 810, 811, 812, 813, 814, 815, 816, 817, 818, 819, 820, 821, 822, 823, 824, 825, 826, 827, 828, 829, 830, 831, 832, 833, 834, 835, 836, 837, 838, 839, 840, 841, 842, 843, 844, 845, 846, 847, 848, 849, 850, 851, 852, 853, 854, 855, 856, 857, 858, 859, 860, 861, 862, 863, 864, 865, 866, 867, 868, 869, 870, 871, 872, 873, 874, 875, 876, 877, 878, 879, 880, 881, 882, 883, 884, 885, 886, 887, 888, 889, 890, 891, 892, 893, 894, 895, 896, 897, 898, 899, 900, 901, 902, 903,	DESCRIPTION	DRAWN	CHKD	ANAL	ENGR	DWG CO.
UNLESS OTHERWISE SPECIFIED				DESIGNED	DATE					
DIMENSIONS ARE IN INCHES				DRS	1/10/73					
TOLERANCES ARE				EDY	2/20/73					
FRACTIONS DECIMALS ANGLES				SMB	2/26/73					
				ENGR'D	KFB		2/21/73			
FINISH				ADD DETAIL	2/20/73					
SCALE				2/20/73	2/20/73					
NONE				2/20/73	2/20/73					
USE ON NEXT ASSY				2/20/73	2/20/73					
				PROJECT NO.	DRAWING NO.		REV.			
				5364	E - 5761					