

ACCELERATED DISTRIBUTION DEMONSTRATION SYSTEM

REGULATORY INFORMATION DISTRIBUTION SYSTEM (RIDS)

ACCESSION NBR: 9204060374 DOC. DATE: 92/03/27 NOTARIZED: NO DOCKET #
 FACIL: 50-315 Donald C. Cook Nuclear Power Plant, Unit 1, Indiana M 05000315
 AUTH. NAME AUTHOR AFFILIATION
 FITZPATRICK, E. Indiana Michigan Power Co. (formerly Indiana & Michigan Ele
 RECIP. NAME RECIPIENT AFFILIATION
 Document Control Branch (Document Control Desk)

SUBJECT: Application for amend to License DPR-58, revising TSs to
 allow use of interim plugging criteria to establish
 operability of SG tubes for cycle beginning in approx Sept
 1992, per 920320 ltr submitting Westinghouse Rept WCAP-13187.

DISTRIBUTION CODE: A001D COPIES RECEIVED: LTR 1 ENCL 1 SIZE: 13 + 30
 TITLE: OR Submittal: General Distribution

NOTES:

| | RECIPIENT | | COPIES | | | RECIPIENT | | COPIES | |
|-----------|-----------------|--|--------|------|--|-----------------|--|--------|------|
| | ID CODE/NAME | | LTTR | ENCL | | ID CODE/NAME | | LTTR | ENCL |
| | PD3-1 LA | | 1 | 1 | | PD3-1 PD | | 1 | 1 |
| | STANG, J | | 2 | 2 | | | | | |
| INTERNAL: | NRR/DET/ECMB 7D | | 1 | 1 | | NRR/DET/ESGB | | 1 | 1 |
| | NRR/DOEA/OTSB11 | | 1 | 1 | | NRR/DST 8E2 | | 1 | 1 |
| | NRR/DST/SELB 7E | | 1 | 1 | | NRR/DST/SICB8H7 | | 1 | 1 |
| | NRR/DST/SRXB 8E | | 1 | 1 | | NUDOCS-ABSTRACT | | 1 | 1 |
| | OC/LEMB | | 1 | 0 | | OGC/HDS2 | | 1 | 0 |
| | REG FILE 01 | | 1 | 1 | | RES/DSIR/EIB | | 1 | 1 |
| EXTERNAL: | NRC PDR | | 1 | 1 | | NSIC | | 1 | 1 |

NOTE TO ALL "RIDS" RECIPIENTS:

PLEASE HELP US TO REDUCE WASTE! CONTACT THE DOCUMENT CONTROL DESK,
 ROOM P1-37 (EXT. 20079) TO ELIMINATE YOUR NAME FROM DISTRIBUTION
 LISTS FOR DOCUMENTS YOU DON'T NEED!

TOTAL NUMBER OF COPIES REQUIRED: LTTR 18 ENCL 16

AA-2
 11/2

Indiana Michigan
Power Company
P.O. Box 16631
Columbus, OH 43216



AEP:NRC:1166A

Donald C. Cook Nuclear Plant Unit 1
Docket No. 50-315
License No. DPR-58
TECHNICAL SPECIFICATIONS CHANGE TO ALLOW
INTERIM PLUGGING CRITERIA

U.S. Nuclear Regulatory Commission
Document Control Desk
Washington, D.C. 20555

Attn: T. E. Murley

March 27, 1992

Dear Dr. Murley:

This letter and its attachments constitute an application for amendment to the Technical Specifications (T/Ss) for Donald C. Cook Nuclear Plant Unit 1 in accordance with 10 CFR 50.90. Based on direction from your staff following a March 24, 1992 briefing on our proposed alternate plugging criteria, this license amendment request is to obtain authorization to use an interim plugging criteria to establish the operability of the Cook Nuclear Plant Unit 1 steam generator tubes for one cycle beginning in approximately September 1992.

The T/Ss now require steam generator tubes to be plugged or repaired when the degradation exceeds 40% tube wall penetration as determined by non-destructive examination. We believe that flaw indications within the bounds of the tube support plate with a bobbin voltage less than or equal to 1.75 volts may remain in service. Flaw indications with a voltage greater than 1.75 volts will be plugged or repaired. We also believe that a tube can remain in service if the signal amplitude is less than or equal to 1.75 volts, regardless of the depth of penetration, if the projected end-of-cycle distribution of crack indications is verified to result in primary-to-secondary leakage less than 120 gpm in one steam generator during a postulated steam line break. Westinghouse WCAP-13187, "D. C. Cook Unit 1 Steam Generator Tube Plugging Criteria for Indications at Tube Support Plates," which was submitted as Attachment 4 to our letter AEP:NRC:1166 dated March 20, 1992, provides the development of the 4.0 volt alternate plugging criteria and is also the technical basis for this more conservative interim plugging submittal.

9204060374 920327
PDR ADDCK 05000315
P PDR

ADD 1/1

1

2

3

4

5

6

7

8

Dr. T. E. Murley

-2-

AEP:NRC:1166A

A detailed description of the proposed changes and our analyses concerning significant hazards considerations are included in Attachment 1 to this letter. Attachment 2 contains the proposed revised T/Ss pages. Attachment 3 contains the marked-up copies of the existing T/Ss.

We believe that the proposed changes will not result in (1) a significant change in the types of effluents or a significant increase in the amount of any effluents that may be released offsite, or (2) a significant increase in individual or cumulative occupational radiation exposure.

These proposed changes have been reviewed by the Plant Nuclear Safety Review Committee and will be reviewed by the Nuclear Safety and Design Review Committee at their next regularly scheduled meeting.

In compliance with the requirements of 10CFR50.91(b)(1), copies of this letter and its attachments have been transmitted to the Michigan Public Service Commission and the NFEM Section Chief.

Please contact us if you have any questions concerning this license amendment request. Members of your staff agreed to review and provide verbal approval of these changes by May 22, 1992. This is the minimum amount of time necessary to prepare for implementation of the interim plugging criteria during the Unit 1 refueling outage beginning approximately June 23, 1992. We request that the amended T/Ss be issued by June 23, 1992.

This document has been prepared following Corporate procedures that incorporate a reasonable set of controls to ensure its accuracy and completeness prior to signature by the undersigned.

Sincerely,



E. E. Fitzpatrick
Vice President

eh

Attachments



12

民國三十一年九月九日

1990

10

•

5

•

1

1

Dr. T. E. Murley

-3-

AEP:NRC:1166A

cc: D. H. Williams, Jr.
A. A. Blind - Bridgman
J. R. Padgett
G. Charnoff
A. B. Davis - Region III
NRC Resident Inspector - Bridgman
NFEM Section Chief

ATTACHMENT 1 to AEP:NRC:1166A

NO SIGNIFICANT HAZARDS CONSIDERATION EVALUATION

IN SUPPORT OF THE

INTERIM PLUGGING CRITERIA

1
2
3
4
5
6
7
8
9
10
11
12
13
14
15
16
17
18
19
20
21
22
23
24
25
26
27
28
29
30
31
32
33
34
35
36
37
38
39
40
41
42
43
44
45
46
47
48
49
50
51
52
53
54
55
56
57
58
59
60
61
62
63
64
65
66
67
68
69
70
71
72
73
74
75
76
77
78
79
80
81
82
83
84
85
86
87
88
89
90
91
92
93
94
95
96
97
98
99
100

1
2
3
4
5
6
7
8
9
10
11
12
13
14
15
16
17
18
19
20
21
22
23
24
25
26
27
28
29
30
31
32
33
34
35
36
37
38
39
40
41
42
43
44
45
46
47
48
49
50
51
52
53
54
55
56
57
58
59
60
61
62
63
64
65
66
67
68
69
70
71
72
73
74
75
76
77
78
79
80
81
82
83
84
85
86
87
88
89
90
91
92
93
94
95
96
97
98
99
100

1
2
3
4
5
6
7
8
9
10
11
12
13
14
15
16
17
18
19
20
21
22
23
24
25
26
27
28
29
30
31
32
33
34
35
36
37
38
39
40
41
42
43
44
45
46
47
48
49
50
51
52
53
54
55
56
57
58
59
60
61
62
63
64
65
66
67
68
69
70
71
72
73
74
75
76
77
78
79
80
81
82
83
84
85
86
87
88
89
90
91
92
93
94
95
96
97
98
99
100

INTRODUCTION

A license amendment is proposed to preclude unnecessarily plugging steam generator tubes due to the occurrence of outer diameter initiated stress corrosion cracking (ODSCC) at the tube support plates in the Cook Nuclear Plant Unit 1 steam generators. Using the existing Technical Specifications (T/Ss) steam generator tube plugging criteria of 40% tube wall penetration as determined by non-destructive examination (NDE), many of the tubes with crack indications would needlessly have to be removed from service. The interim plugging criteria for tube support plate elevation ODSCC occurring in the Cook Nuclear Plant Unit 1 steam generators may result in tubes with both partial and through-wall cracks returning to service. In the limiting case, it is demonstrated that the presence of through-wall cracks alone is not reason enough to remove a tube from service.

DESCRIPTION OF THE AMENDMENT REQUEST

As required by 10 CFR 50.91(a)(1), an analysis is provided to demonstrate that the proposed license amendment to implement an interim steam generator tube plugging criteria for the tube support plate elevations at Cook Nuclear Plant Unit 1 involves no significant hazards considerations. The interim plugging criteria involve a correlation between eddy current bobbin coil signal amplitude (voltage) and tube burst and leakage capability. The plugging criteria is based on testing of laboratory-induced ODSCC specimens, extensive examination of pulled tubes from operating steam generators (industry wide), and field experience with leakage due to indications at the tube support plates (world wide).

Specifically, crack indications with bobbin coil voltages less than or equal to 1.75 volts, regardless of indicated depth, do not require remedial action if postulated steam line break leakage can be shown to be acceptable. Crack indications with bobbin coil signal amplitudes exceeding 1.75 volts must be either plugged or repaired.

The proposed amendment would modify T/Ss 3.4.5 "Steam Generators," 3.4.6, "Reactor Coolant System Leakage," and the associated bases. These proposed changes provide tube inspection requirements and acceptance criteria to determine the level of degradation for which a tube experiencing ODSCC at the tube support plate elevations may remain in service in the Cook Nuclear Plant Unit 1 steam generators.

[illegible]

1980

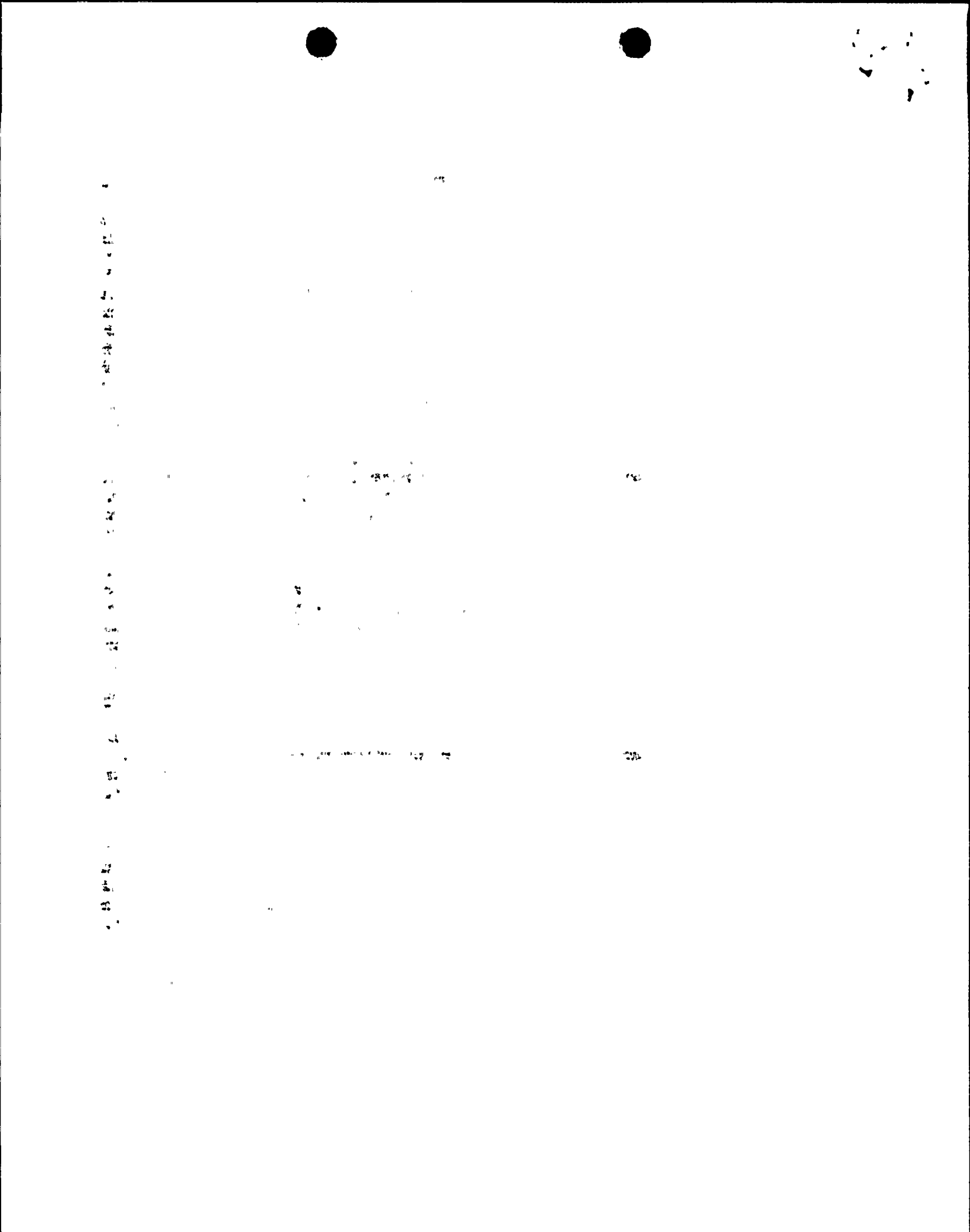
1 2 3 4 5 6 7 8 9 10 11 12 13 14 15 16 17 18 19 20 21 22 23 24 25 26 27 28 29 30 31 32 33 34 35 36 37 38 39 40 41 42 43 44 45 46 47 48 49 50 51 52 53 54 55 56 57 58 59 60 61 62 63 64 65 66 67 68 69 70 71 72 73 74 75 76 77 78 79 80 81 82 83 84 85 86 87 88 89 90 91 92 93 94 95 96 97 98 99 100 101 102 103 104 105 106 107 108 109 110 111 112 113 114 115 116 117 118 119 120 121 122 123 124 125 126 127 128 129 130 131 132 133 134 135 136 137 138 139 140 141 142 143 144 145 146 147 148 149 150 151 152 153 154 155 156 157 158 159 160 161 162 163 164 165 166 167 168 169 170 171 172 173 174 175 176 177 178 179 180 181 182 183 184 185 186 187 188 189 190 191 192 193 194 195 196 197 198 199 200 201 202 203 204 205 206 207 208 209 210 211 212 213 214 215 216 217 218 219 220 221 222 223 224 225 226 227 228 229 230 231 232 233 234 235 236 237 238 239 240 241 242 243 244 245 246 247 248 249 250 251 252 253 254 255 256 257 258 259 260 261 262 263 264 265 266 267 268 269 270 271 272 273 274 275 276 277 278 279 280 281 282 283 284 285 286 287 288 289 290 291 292 293 294 295 296 297 298 299 300 301 302 303 304 305 306 307 308 309 310 311 312 313 314 315 316 317 318 319 320 321 322 323 324 325 326 327 328 329 330 331 332 333 334 335 336 337 338 339 340 341 342 343 344 345 346 347 348 349 350 351 352 353 354 355 356 357 358 359 360 361 362 363 364 365 366 367 368 369 370 371 372 373 374 375 376 377 378 379 380 381 382 383 384 385 386 387 388 389 390 391 392 393 394 395 396 397 398 399 400 401 402 403 404 405 406 407 408 409 410 411 412 413 414 415 416 417 418 419 420 421 422 423 424 425 426 427 428 429 430 431 432 433 434 435 436 437 438 439 440 441 442 443 444 445 446 447 448 449 450 451 452 453 454 455 456 457 458 459 460 461 462 463 464 465 466 467 468 469 470 471 472 473 474 475 476 477 478 479 480 481 482 483 484 485 486 487 488 489 490 491 492 493 494 495 496 497 498 499 500 501 502 503 504 505 506 507 508 509 510 511 512 513 514 515 516 517 518 519 520 521 522 523 524 525 526 527 528 529 530 531 532 533 534 535 536 537 538 539 540 541 542 543 544 545 546 547 548 549 550 551 552 553 554 555 556 557 558 559 560 561 562 563 564 565 566 567 568 569 570 571 572 573 574 575 576 577 578 579 580 581 582 583 584 585 586 587 588 589 590 591 592 593 594 595 596 597 598 599 600 601 602 603 604 605 606 607 608 609 610 611 612 613 614 615 616 617 618 619 620 621 622 623 624 625 626 627 628 629 630 631 632 633 634 635 636 637 638 639 640 641 642 643 644 645 646 647 648 649 650 651 652 653 654 655 656 657 658 659 660 661 662 663 664 665 666 667 668 669 670 671 672 673 674 675 676 677 678 679 680 681 682 683 684 685 686 687 688 689 690 691 692 693 694 695 696 697 698 699 700 701 702 703 704 705 706 707 708 709 710 711 712 713 714 715 716 717 718 719 720 721 722 723 724 725 726 727 728 729 730 731 732 733 734 735 736 737 738 739 740 741 742 743 744 745 746 747 748 749 750 751 752 753 754 755 756 757 758 759 760 761 762 763 764 765 766 767 768 769 770 771 772 773 774 775 776 777 778 779 780 781 782 783 784 785 786 787 788 789 790 791 792 793 794 795 796 797 798 799 800 801 802 803 804 805 806 807 808 809 810 811 812 813 814 815 816 817 818 819 820 821 822 823 824 825 826 827 828 829 830 831 832 833 834 835 836 837 838 839 840 841 842 843 844 845 846 847 848 849 850 851 852 853 854 855 856 857 858 859 860 861 862 863 864 865 866 867 868 869 870 871 872 873 874 875 876 877 878 879 880 881 882 883 884 885 886 887 888 889 890 891 892 893 894 895 896 897 898 899 900 901 902 903 904 905 906 907 908 909 910 911 912 913 914 915 916 917 918 919 920 921 922 923 924 925 926 927 928 929 930 931 932 933 934 935 936 937 938 939 940 941 942 943 944 945 946 947 948 949 950 951 952 953 954 955 956 957 958 959 960 961 962 963 964 965 966 967 968 969 970 971 972 973 974 975 976 977 978 979 980 981 982 983 984 985 986 987 988 989 990 991 992 993 994 995 996 997 998 999 1000 1001 1002 1003 1004 1005 1006 1007 1008 1009 1010 1011 1012 1013 1014 1015 1016 1017 1018 1019 1020 1021 1022 1023 1024 1025 1026 1027 1028 1029 1030 1031 1032 1033 1034 1035 1036 1037 1038 1039 1040 1

EVALUATION

Steam Generator Tube Integrity Discussion

In the development of the interim plugging criteria, Regulatory Guides (RG) 1.121, "Bases for Plugging Degraded PWR Steam Generator Tubes," and 1.83 "Inservice Inspection of PWR Steam Generator Tubes," are used as the bases for determining that steam generator tube integrity considerations are maintained within acceptable limits. Regulatory Guide 1.121 describes a method acceptable to the NRC staff for meeting General Design Criteria (GDC) 2, 4, 14, 15, 31, and 32 by reducing the probability and consequences of steam generator tube rupture through determining the limiting safe conditions of tube wall degradation. Tubes with unacceptable cracking, as established by inservice inspection, should be repaired or removed from service by plugging. This RG uses safety factors on loads for tube burst that are consistent with the requirements of Section III of the ASME Code. For the tube support plate elevation degradation occurring in the Cook Nuclear Plant Unit 1 steam generators, tube burst criteria are inherently satisfied during normal operating conditions by the presence of the tube support plate. The presence of the tube support plate enhances the integrity of the degraded tubes in that region by precluding tube deformation beyond the diameter of the drilled hole. It is not certain whether the tube support plate would function to provide a similar constraining effect during accident condition loadings. Therefore, no credit is taken in the development of the plugging criteria for the presence of the tube support plate during accident condition loadings. Conservatively, based on the existing data base, burst testing shows that the safety requirements for tube burst margins during both normal and accident condition loadings can be satisfied with bobbin coil signal amplitudes less than 6.8 volts, regardless of the depth of tube wall penetration of the cracking. Regulatory Guide 1.83 describes a method acceptable to the NRC staff for implementing GDC 14, 15, 31, and 32 through periodic inservice inspection for the detection of significant tube wall degradation.

Upon implementation of the plugging criteria, tube leakage considerations must also be addressed. It must be determined that the cracks will not leak excessively during all plant conditions. For the interim tube plugging criteria developed for the Cook Nuclear Plant Unit 1 steam generator tubes, little or no leakage is expected during normal operating conditions even with the presence of through-wall cracks. Industry wide, the crack morphology of SCC at tube support plate intersections is best described as short, tight, axially oriented microcracks separated by ligaments of non-degraded material. The same morphology is judged to be present

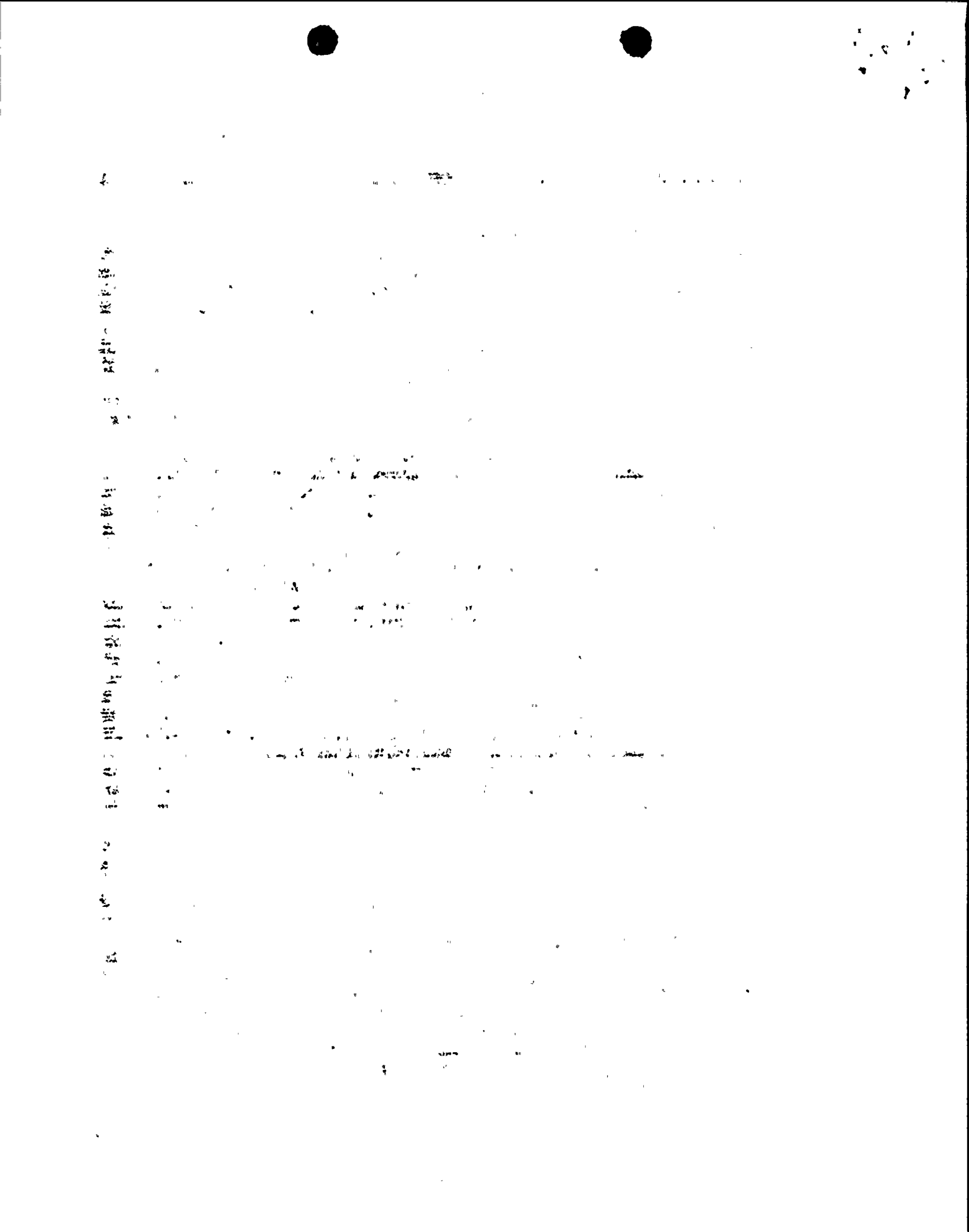


in the Cook Nuclear Plant Unit 1 steam generators. Tube pull examination results from 1983 indicated axial SCC in its early stages. The depths of the evidenced degradation (determined by destructive exam) showed the maximum depth of penetration to be approximately 10% through-wall. The rotating pancake coil (RPC) testing performed during the 1989 outage has confirmed that axially oriented SCC cracks exist at the tube support plate intersections. Based on the RPC testing results and relatively small amplitude bobbin voltages coupled with low bobbin voltage growth rates, it is concluded that axially oriented ODSCC best defines the degradation morphology occurring at the Cook Nuclear Plant Unit 1 tube support plate intersections. Additional tubes will be pulled during the summer 1992 refueling outage for destructive examination to confirm the tube degradation phenomena occurring at the tube support plates. No leakage during normal operating conditions has been observed at the support plates in the field at similar plants for crack indications with signal amplitudes less than 7.7 volts. Additionally, no primary-to-secondary leakage at the tube support plate has been detected in U.S. plants. Relative to the expected leakage during accident condition loadings, the limiting event with respect to primary-to-secondary leakage is a postulated steam line break event. Laboratory data for pulled tubes from other plants and model boiler specimens show limited leakage for indications under 10.0 volts during a postulated steam line break (SLB) condition (see Section 9.0 of WCAP-13187).

Additional Considerations

The proposed amendment would preclude approximately 10 manrem occupational radiation exposure that would otherwise be incurred by plant workers involved in tube plugging or repair operations. The proposed amendment would minimize the loss of margin in reactor coolant flow through the steam generator in LOCA analyses. The proposed amendment would avoid loss of margin in reactor coolant system flow and therefore assist in demonstrating that minimum flow rates are maintained in excess of those required for operation at full power. Reduction in the amount of tube plugging required can reduce the length of plant outages and reduce the time that the steam generator is open to the containment environment during an outage, thereby minimizing airborne contamination and exposure.

In addition, we will perform 100% bobbin coil inspection of the hot leg tubes to identify new areas of concern that may arise by providing a level of inservice inspection that is far in excess of the current T/Ss requirements.



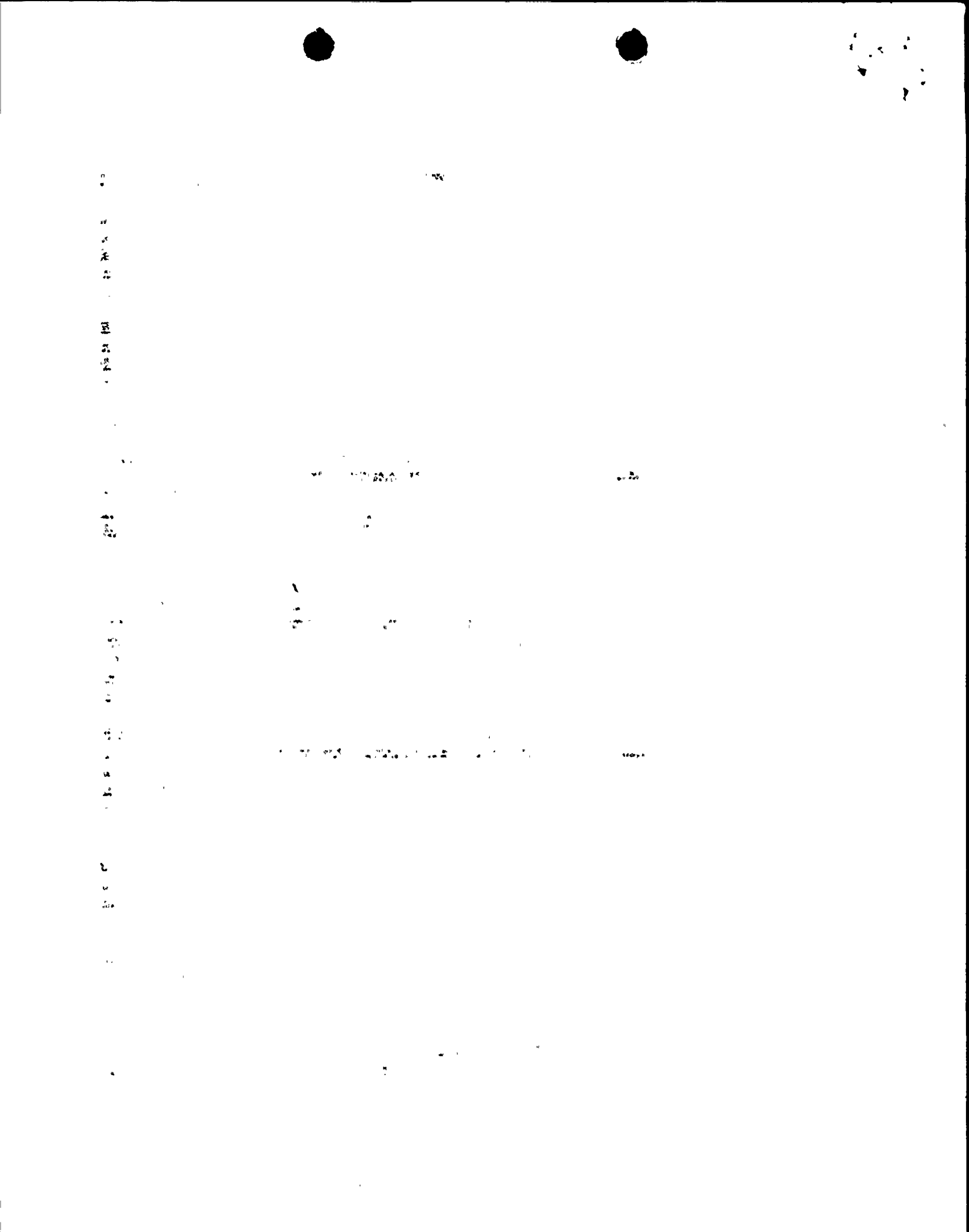
NO SIGNIFICANT HAZARDS ANALYSIS

We have evaluated the proposed T/Ss change and have determined that it does not represent a significant hazards consideration based on the criteria established in 10 CFR 50.92(c). Operation of the Cook Nuclear Plant in accordance with the proposed amendment will not:

- 1) Involve a significant increase in the probability or consequences of an accident previously evaluated

Testing of model boiler specimens for free standing tubes at room temperature conditions show burst pressures in excess of 5000 psi for indications of ODSCC with voltage measurements as high as 19 volts. Burst testing performed on pulled tubes from other plants with up to 10 volt indications show burst pressures in excess of 5900 psi at room temperature. Correcting for the effects of temperature on material properties and minimum strength levels (as the burst testing was done at room temperature), tube burst capability significantly exceeds the RG 1.121 criteria, requiring the maintenance of a margin of three times normal operating pressure differential on tube burst if through-wall cracks are present. Based on the existing data base, this criteria is satisfied with bobbin coil indications with signal amplitudes less than 6.8 volts, regardless of the indicated depth measurement. This structural limit is based on a -95% lower tolerance limit (LTL) confidence level of the data. The 1.75 volt plugging criteria compare favorably with the structural limit considering expected growth rates of ODSCC at Cook Nuclear Plant Unit 1. Alternate crack morphologies can correspond to 6.8 volts so that a unique crack length is not defined by a burst-pressure-to-voltage correlation. However, relative to expected leakage during normal operating conditions, no field leakage has been reported at other plants from tubes with indications with a voltage level of under 7.7 volts.

Also, a qualitative assessment is made between the beginning-of-cycle (BOC) 1.75 volt tube plugging criteria and the current 40% allowable tube wall penetration plugging criteria at Cook Nuclear Plant Unit 1. An ODSCC-degraded tube support plate intersection with a 4.0 volt bobbin coil response is expected to burst at approximately 7400 psi, using the mean curve of Figure 9-2 of WCAP-13187. While the -95% LTL curve is used in the application of the plugging criteria, the mean curve must be used for this specific comparison in order to adequately compare the two data sets used. Per WCAP-13187, a comparison of the material properties at 650°F and room



temperature condition properties showed that the elevated temperature properties are approximately 0.86 of the room temperature properties. Therefore, the temperature-adjusted burst pressure for a 4.0 volt bobbin coil indication is expected to be approximately 6400 psi.

Figure 11 of NUREG-0718 plots the burst pressures of thinned 0.875 x 0.050 inch steam generator tubes. At 40% actual uniform wall thinning, extending 0.75 inch in axial length, the burst pressure is 6800 psi. The NUREG test data is obtained at a temperature of 600°F, compared to the Westinghouse data noted above, which is adjusted for 650°F. The NUREG results at 40% actual thinning are comparable to the 4.0 volt BOC criteria expected burst pressure (6800 psi versus 6300 psi). The burst pressure for non-thinned tubes with partial depth cracks up to 0.75 inch in length is slightly lower than for uniform thinning up to depths of about 60%. Also, NUREG-0718 information can be used to estimate the burst pressure for a tube which has been slotted, simulating an axial crack. The expected burst pressure for a 40% deep, 0.75-inch long EDM slot using NUREG-0718 is approximately 6000 psi. Therefore, it is judged that the margin of safety corresponding to the current 40% by NDE depth based plugging criteria is not significantly reduced upon implementation of a 4.0 volt bobbin coil criteria, which is higher than this proposed interim plugging criteria of 1.75 volts.

Relative to the expected leakage during accident condition loadings, the accidents that are affected by primary-to-secondary leakage and steam release to the environment are: feedwater system malfunction, loss of external electrical load and/or turbine trip, loss of all AC power to station auxiliaries, major secondary system pipe failure, steam generator tube rupture, reactor coolant pump locked rotor, and rupture of a control rod drive mechanism housing. Of these, the major secondary system pipe failure is the most limiting for Cook Nuclear Plant Unit 1 in considering the potential for off-site doses. Upon implementation of the interim plugging criteria, it will be verified that the distribution of cracking indications at the tube support plate intersections is such that primary-to-secondary leakage would result in site boundary doses within a small fraction of the 10 CFR 100 guideline, i.e., 30 rem thyroid, during a postulated SLB event. Data indicates that a threshold voltage of 2.8 volts would result in through-wall cracks with the potential to leak at SLB conditions. Application of the proposed plugging criteria requires that the current

1

2

3

4

5

6

7

8

9

10

11

12

13

14

15

distribution of number of indications versus voltage be obtained. The indicated bobbin coil voltage is then combined with the rate of change in voltage measurement to establish an end-of-cycle (EOC) voltage distribution and, thus, leak rate during SLB pressure differential. If it is found that the projected SLB leakage for degraded intersections planned to be left in service exceeds 120 gpm, then additional tubes will be plugged to reduce projected SLB leakage below 120 gpm. Monte Carlo analyses results based on the Cook Nuclear Plant Unit 1 growth rate and assumed eddy current uncertainties indicate that over 4000 indications, all with a (BOC) bobbin coil voltage of 2.0 volts, would contribute less than 1 gpm leakage at SLB conditions. Based on the inspection results from the last outage (1990), indications left in service are expected to have a total predicted SLB leak rate of 0.1 gpm at EOC conditions.

2) Create the possibility of a new or different kind of accident from any previously analyzed

Implementation of the proposed amendment does not introduce any significant changes to the plant design basis. Use of the criteria does not provide a mechanism that could result in an accident outside of the region of the tube support plate elevations. Neither a single nor multiple tube rupture event would be expected in a steam generator in which the plugging criteria has been applied (during all plant conditions). The bobbin coil signal amplitude plugging criteria is established such that neither operational leakage nor excessive leakage during a postulated SLB condition are anticipated.

Indiana and Michigan Power Company will implement a maximum leakage rate limit of 150 gpd (0.1 gpm) per steam generator to help preclude the potential for excessive leakage during all plant conditions upon application of the interim plugging criteria. The current technical specification limit on primary-to-secondary leakage at operating conditions is a maximum of 1.0 gpm (1440 gpd) for all steam generators or a maximum of 500 gpd for any one steam generator. The RG 1.121 criteria for establishing operational leakage rate limits that require plant shutdown are based upon leak-before-break considerations to detect a free span crack before potential tube rupture. The 150 gpd limit provides for leakage detection and plant shutdown in the event of the occurrence of an unexpected single crack resulting in leakage that is associated with the longest permissible crack length. Regulatory Guide 1.121 acceptance criteria (Item 3 of Section

10

11

12

13

14

15

16

17

18

19

20

21

22

23

24

25

3.2 of WCAP-13187) for establishing operating leakage limits are based on leak-before-break considerations such that plant shutdown is initiated if the leakage associated with the longest permissible crack is exceeded. The longest permissible crack is the length that provides a factor of safety of three against bursting at normal operating pressure differential. A voltage amplitude of 6.8 volts for typical ODSCC corresponds to meeting this tube burst requirement at the -95% LTL uncertainty limit on the burst correlation. Alternate crack morphologies can correspond to 6.8 volts so that a unique crack length is not defined by the burst pressure versus voltage correlation. Consequently, typical burst pressure versus through-wall crack length correlations are used below to define the "longest permissible crack" for evaluating operating leakage limits.

The single through-wall crack lengths that result in tube burst at three times normal operating pressure differential and SLB conditions are about 0.44 inch and 0.84 inch, respectively. Nominal leakage for these crack lengths would range from 0.1 gpm to 4 gpm, respectively, while lower 95% confidence level leak rates would range from about 0.01 gpm to 0.5 gpm, respectively.

An operating leak rate limit of 150 gpd will be implemented in application of the interim tube plugging criteria. This leakage limit provides for detection of 0.4 inch long cracks at nominal leak rates and 0.6 inch long cracks at the -95% LTL confidence level leak rates. Thus, the 150 gpd limit provides for plant shutdown prior to reaching critical crack lengths for SLB conditions at leak rates less than a -95% LTL confidence level and for three times normal operating pressure differential at less than nominal leak rates.

3) Involve a significant reduction in a margin of safety

The use of the interim plugging criteria for the tube support plate at Cook Nuclear Plant Unit 1 is demonstrated to maintain steam generator tube integrity commensurate with the requirements of RG 1.121. Regulatory Guide 1.121 describes a method acceptable to the NRC staff for meeting GDC 14, 15, 31, and 32 by reducing the probability of the consequences of steam generator tube rupture. This is accomplished by determining the limiting conditions of degradation of steam generator tubing, as established by inservice inspection. Tubes with unacceptable cracking will be removed from service. The most limiting effect would be a possible increase in leakage during a steam line break event. Once

一、政治思想：具有坚定的政治立场，拥护党的路线、方针、政策，具有较高的政治觉悟和理论水平。

the interim plugging criteria is applied, excessive leakage during a steam line break event is precluded by verifying that the expected end-of-cycle distribution of crack indications at the tube support plate elevations would result in minimal and acceptable primary-to-secondary leakage during all plant conditions. This helps to demonstrate that radiological conditions are less than a small fraction of the 10 CFR 100 guideline.

In addressing the combined effects of a loss-of-coolant accident (LOCA) and a safe shutdown earthquake (SSE) on the steam generator component (as required by GDC 2), it has been determined that tube collapse may occur in the steam generators at some plants. This is the case as the tube support plates may become deformed as a result of lateral loads at the wedge supports at the periphery of the plate due to the combined effects of the LOCA rarefaction wave and SSE loadings. The resulting pressure differential on the deformed tubes may cause some of the tubes to collapse.

There are two issues associated with steam generator tube collapse. First, the collapse of steam generator tubing reduces the RCS flow area through the tubes. The reduction in flow area increases the resistance to flow of steam from the core during a LOCA which, in turn, may potentially increase peak clad temperature. Second, there is a potential that partial through-wall cracks in tubes could progress to through-wall cracks during tube deformation or collapse.

Consequently, since the leak-before-break methodology is applicable to the Cook Nuclear Plant Unit 1 reactor coolant system primary loops, the probability of breaks in the primary loop piping is sufficiently low that they need not be considered in the structural design basis of the plant. Excluding breaks in the RCS primary loops, the LOCA loads from the large branch line breaks were analyzed for Cook Nuclear Plant Unit 1 and were found to be of insufficient magnitude to result in steam generator tube collapse or significant deformation.

Regardless of whether or not leak-before-break is applied to the primary loop piping at Cook Nuclear Plant Unit 1, any flow area reduction is expected to be minimal (much less than 1%) and PCT margin is available to account for this potential effect. Analyses results show that no tubes near wedge locations are expected to collapse or deform to the degree that secondary-to-primary in-leakage would be increased over

100

100

100

100

100

100

100

100

100

100

100

100

100

100

100

100

100

100

100

100

100

100

100

100

100

100

100

100

100

100

100

100

100

100

current expected levels. For all other steam generator tubes, the possibility of secondary-to-primary leakage in the event of a combined LOCA and SSE event is not significant. In actuality, the amount of secondary-to-primary leakage in the event of a combined LOCA and SSE is expected to be less than that currently allowed, i.e., 500 gpd per steam generator. Furthermore, secondary-to-primary in-leakage would be less than primary-to-secondary leakage for the same pressure differential since the cracks would tend to close under a secondary-to-primary pressure differential. Also, the presence of the tube support plate is expected to reduce the amount of in-leakage.

Addressing RG 1.83 considerations, implementation of the interim plugging criteria is supplemented by 100% inspection requirements at the tube support plate elevations having ODSCC indications, reduced operating leak rate limits, and eddy current inspection guidelines to provide consistency in voltage normalization.

As noted previously, implementation of the interim plugging criteria will decrease the number of tubes which must be repaired or taken out of service by plugging. The installation of steam generator tube plugs reduces the RCS flow margin and, thus, implementation of the interim plugging criteria will maintain the margin of flow that would otherwise be reduced in the event of increased tube plugging.

Based on the above, it is concluded that the proposed change does not result in a significant reduction in margin with respect to plant safety as defined in the Final Safety Analysis Report or any bases of the plant Technical Specifications.

CONCLUSION

Based on the preceding analysis, it is concluded that using the tube support plate elevation bobbin coil signal amplitude interim steam generator tube plugging criteria for removing tubes from service at Cook Nuclear Plant Unit 1 is acceptable and the proposed license amendment does not involve a Significant Hazards Consideration as defined in 10 CFR 50.92.

10

10