

MONTH: JUNE, 1979

WEIGHT IN KILOGRAMS

TEMPERATURE IN DEGREES CENTIGRADE

PERCENTAGES ARE OF TOTAL SAMPLED THIS MONTH

	1		2		3		4		5		6		7		8	
TEMP C	NO SAMPLING		NO SAMPLING		NO SAMPLING		NO SAMPLING		NO SAMPLING		NO SAMPLING		NO SAMPLING		NO SAMPLING	
SPECIES	NUMBER	WEIGHT	NUMBER	WEIGHT	NUMBER	WEIGHT	NUMBER	WEIGHT	NUMBER	WEIGHT	NUMBER	WEIGHT	NUMBER	WEIGHT	NUMBER	WEIGHT
AL	0	0.0	0	0.0	0	0.0	0	0.0	0	0.0	0	0.0	0	0.0	0	0.0
WS	0	0.0	0	0.0	0	0.0	0	0.0	0	0.0	0	0.0	0	0.0	0	0.0
TOTALS	0	0.0	0	0.0	0	0.0	0	0.0	0	0.0	0	0.0	0	0.0	0	0.0
PERCENT	0.0	0.0	0.0	0.0	0.0	0.0	0.0	0.0	0.0	0.0	0.0	0.0	0.0	0.0	0.0	0.0

8002190755

MONTH: JUNE, 1979

WEIGHT IN KILOGRAMS
TEMPERATURE IN DEGREES CENTIGRADE
PERCENTAGES ARE OF TOTAL SAMPLED THIS MONTH

[illegible]

MONTH: JUN, 1979

WEIGHT IN KILOGRAMS
TEMPERATURE IN DEGREES CENTIGRADE
PERCENTAGES ARE OF TOTAL SAMPLED THIS MONTH

[illegible]

MONTH: JUNE, 1979

WEIGHT IN KILOGRAMS
TEMPERATURE IN DEGREES CENTIGRADE
PERCENTAGES ARE OF TOTAL SAMPLED THIS MONTH

	25		26		27		28		29		30		31			
TEMP C	NO SAMPLING		NO SAMPLING		NO SAMPLING		NO SAMPLING		NO SAMPLING		NO SAMPLING		NO SAMPLING			
SPECIES	NUMBER	WEIGHT	NUMBER	WEIGHT	NUMBER	WEIGHT	NUMBER	WEIGHT	NUMBER	WEIGHT	NUMBER	WEIGHT	NUMBER	WEIGHT	TOT. NO.	TOT. WT.
AL	0	0.0	0	0.0	0	0.0	0	0.0	0	0.0	0	0.0	0	0.0	4	0.16
WS	0	0.0	0	0.0	0	0.0	0	0.0	0	0.0	0	0.0	0	0.0	1	0.88
TOTALS	0	0.0	0	0.0	0	0.0	0	0.0	0	0.0	0	0.0	0	0.0	5	1.03
PERCENT	0.0	0.0	0.0	0.0	0.0	0.0	0.0	0.0	0.0	0.0	0.0	0.0	0.0	0.0	100.00	100.00

MONTH: JUL 1979

WEIGHT IN KILOGRAMS
TEMPERATURE IN DEGREES CENTIGRADE
PERCENTAGES ARE OF TOTAL SAMPLED THIS MONTH

SPECIES	DAILY AVG NUMBER	STD DEV NUMBER	DAILY AVG WEIGHT	STD DEV WEIGHT	PERCENT NUMBER	TOTAL NUMBER	PERCENT WEIGHT	TOTAL WEIGHT	ESTIMATED TOTALS FOR MONTH NUMBER	WEIGHT
AL	2.00	0.0	0.08	0.0	80.00	4	15.28	0.16	60	2.37
WS	0.50	0.0	0.44	0.0	20.00	1	84.72	0.88	15	13.14
TOTAL	2.50	0.0	0.52	0.0	100.00	5	100.00	1.03	75	15.51

THERE WERE 2 DAYS ON WHICH SAMPLES WERE TAKEN.
ESTIMATED TOTALS FOR THIS MONTH ARE BASED ON 30 DAYS OF IMPINGEMENT.

MONTH: JULY, 1979

WEIGHT IN KILOGRAMS
TEMPERATURE IN DEGREES CENTIGRADE
PERCENTAGES ARE OF TOTAL SAMPLED THIS MONTH

	1		2		3		4		5		6		7		8	
TEMP C	NO SAMPLING		NO SAMPLING		NO SAMPLING		NO SAMPLING		15.6		NO SAMPLING		NO SAMPLING		NO SAMPLING	
SPECIES	NUMBER	WEIGHT	NUMBER	WEIGHT	NUMBER	WEIGHT	NUMBER	WEIGHT	NUMBER	WEIGHT	NUMBER	WEIGHT	NUMBER	WEIGHT	NUMBER	WEIGHT
SP	0	0.0	0	0.0	0	0.0	0	0.0	35	0.23	0	0.0	0	0.0	0	0.0
AL	0	0.0	0	0.0	0	0.0	0	0.0	842	25.70	0	0.0	0	0.0	0	0.0
SH	0	0.0	0	0.0	0	0.0	0	0.0	8	0.04	0	0.0	0	0.0	0	0.0
YP	0	0.0	0	0.0	0	0.0	0	0.0	7	0.38	0	0.0	0	0.0	0	0.0
TP	0	0.0	0	0.0	0	0.0	0	0.0	17	0.14	0	0.0	0	0.0	0	0.0
JD	0	0.0	0	0.0	0	0.0	0	0.0	0	0.0	0	0.0	0	0.0	0	0.0
WS	0	0.0	0	0.0	0	0.0	0	0.0	0	0.0	0	0.0	0	0.0	0	0.0
LS	0	0.0	0	0.0	0	0.0	0	0.0	1	1.90	0	0.0	0	0.0	0	0.0
CH	0	0.0	0	0.0	0	0.0	0	0.0	0	0.0	0	0.0	0	0.0	0	0.0
MS	0	0.0	0	0.0	0	0.0	0	0.0	0	0.0	0	0.0	0	0.0	0	0.0
NS	0	0.0	0	0.0	0	0.0	0	0.0	0	0.0	0	0.0	0	0.0	0	0.0
SS	0	0.0	0	0.0	0	0.0	0	0.0	5	0.03	0	0.0	0	0.0	0	0.0
XC	0	0.0	0	0.0	0	0.0	0	0.0	17	0.18	0	0.0	0	0.0	0	0.0
BR	0	0.0	0	0.0	0	0.0	0	0.0	1	0.15	0	0.0	0	0.0	0	0.0
TOTALS	0	0.0	0	0.0	0	0.0	0	0.0	933	28.74	0	0.0	0	0.0	0	0.0
PERCENT	0.0	0.0	0.0	0.0	0.0	0.0	0.0	0.0	2.69	3.88	0.0	0.0	0.0	0.0	0.0	0.0

MONTH: JULY, 1979

WEIGHT IN KILOGRAMS
TEMPERATURE IN DEGREES CENTIGRADE
PERCENTAGES ARE OF TOTAL SAMPLED THIS MONTH

	9		10		11		12		13		14		15		16	
TEMP C	17.2		NO SAMPLING		NO SAMPLING		NO SAMPLING		20.7		NO SAMPLING		NO SAMPLING		NO SAMPLING	
SPECIES	NUMBER	WEIGHT	NUMBER	WEIGHT	NUMBER	WEIGHT	NUMBER	WEIGHT	NUMBER	WEIGHT	NUMBER	WEIGHT	NUMBER	WEIGHT	NUMBER	WEIGHT
SP	14	0.14	C	C.0	0	0.0	C	0.0	17	0.14	0	0.0	0	0.0	0	0.0
AL	980	32.38	C	C.0	0	0.0	0	0.0	3614	79.44	0	0.0	0	0.0	0	0.0
SH	1	0.00	C	0.0	0	0.0	C	0.0	3	0.01	0	0.0	0	0.0	0	0.0
YP	1	0.10	0	C.0	0	C.0	C	0.0	2	0.44	0	0.0	0	0.0	0	0.0
TP	0	0.0	C	0.0	0	0.0	C	0.0	7	0.04	0	0.0	0	0.0	0	0.0
JD	0	0.0	C	C.0	0	0.0	C	0.0	0	0.0	0	0.0	0	0.0	0	0.0
WS	1	0.85	C	C.0	0	0.0	0	0.0	0	0.0	0	0.0	0	0.0	0	0.0
LS	1	1.00	0	C.0	0	0.0	0	0.0	0	0.0	0	0.0	0	0.0	0	0.0
CH	0	0.0	C	C.0	0	0.0	C	0.0	0	0.0	0	0.0	0	0.0	0	0.0
HS	1	0.02	C	0.0	0	0.0	C	0.0	0	0.0	0	0.0	0	0.0	0	0.0
NS	0	0.0	C	C.0	0	0.0	0	0.0	0	0.0	0	0.0	0	0.0	0	0.0
SS	0	0.0	C	0.0	0	0.0	C	0.0	1	0.00	0	0.0	0	0.0	0	0.0
XC	0	0.0	C	C.0	0	0.0	C	0.0	0	0.0	0	0.0	0	0.0	0	0.0
BR	0	0.0	C	0.0	0	0.0	C	0.0	1	0.02	0	0.0	0	0.0	0	0.0
TOTALS	999	34.48	C	C.0	0	0.0	0	0.0	3645	80.10	0	0.0	0	0.0	0	0.0
PERCENT	2.88	4.65	0.0	C.0	0.0	0.0	0.0	0.0	10.52	10.81	0.0	0.0	0.0	0.0	0.0	0.0

PCNTH: JULY, 1979

WEIGHT IN KILOGRAMS
TEMPERATURE IN DEGREES CENTIGRADE
PERCENTAGES ARE OF TOTAL SAMPLED THIS MONTH

	17		18		19		20		21		22		23		24	
TEMP C	16.6		NO SAMPLING		NO SAMPLING		NO SAMPLING		22.0		NO SAMPLING		NO SAMPLING		NO SAMPLING	
SPECIES	NUMBER	WEIGHT	NUMBER	WEIGHT	NUMBER	WEIGHT	NUMBER	WEIGHT	NUMBER	WEIGHT	NUMBER	WEIGHT	NUMBER	WEIGHT	NUMBER	WEIGHT
SP	361	1.50	C	C.0	0	0.0	C	0.0	59	0.90	0	0.0	0	0.0	0	0.0
AL	9639	193.55	C	C.0	0	0.0	0	0.0	5884	149.28	0	0.0	0	0.0	0	0.0
SM	1310	3.85	C	C.0	0	0.0	0	0.0	229	1.03	0	0.0	0	0.0	0	0.0
YP	60	2.70	C	C.0	0	0.0	0	0.0	35	4.95	0	0.0	0	0.0	0	0.0
TP	838	3.67	C	C.0	0	0.0	0	0.0	57	0.51	0	0.0	0	0.0	0	0.0
JD	0	0.0	0	0.0	0	0.0	0	0.0	2	0.01	0	0.0	0	0.0	0	0.0
WS	0	0.0	C	C.0	0	0.0	C	0.0	0	0.0	0	0.0	0	0.0	0	0.0
LS	1	0.68	0	0.0	0	0.0	0	0.0	1	1.30	0	0.0	0	0.0	0	0.0
CH	0	0.0	C	C.0	0	0.0	C	0.0	2	0.02	0	0.0	0	0.0	0	0.0
HS	0	0.0	C	C.0	0	0.0	0	0.0	0	0.0	0	0.0	0	0.0	0	0.0
NS	1	0.00	C	C.0	0	0.0	C	0.0	0	0.0	0	0.0	0	0.0	0	0.0
SS	27	0.12	C	C.0	0	0.0	C	0.0	8	0.04	0	0.0	0	0.0	0	0.0
XC	591	4.68	0	C.0	0	0.0	0	0.0	14	0.14	0	0.0	0	0.0	0	0.0
BR	1	0.32	0	0.0	0	0.0	0	0.0	2	1.06	0	0.0	0	0.0	0	0.0
TOTALS	12829	211.08	C	C.0	0	0.0	0	0.0	6333	159.25	0	0.0	0	0.0	0	0.0
PERCENT	37.02	28.48	0.0	C.0	C.0	C.0	0.0	0.0	18.28	21.49	0.0	0.0	0.0	0.0	0.0	0.0

MONTH: JULY, 1979

WEIGHT IN KILOGRAMS
TEMPERATURE IN DEGREES CENTIGRADE
PERCENTAGES ARE OF TOTAL SAMPLED THIS MONTH

	25		26		27		28		29		30		31			
TEMP C	24.1		NO SAMPLING		NO SAMPLING		NO SAMPLING		20.0		NO SAMPLING		NO SAMPLING			
SPECIES	NUMBER	WEIGHT	NUMBER	WEIGHT	NUMBER	WEIGHT	NUMBER	WEIGHT	NUMBER	WEIGHT	NUMBER	WEIGHT	NUMBER	WEIGHT	TOT. NO.	TOT. WT.
SP	371	2.48	C	C.0	0	0.0	0	0.0	111	C.5E	0	0.0	0	0.0	1008	6.37
AL	5338	126.69	C	0.0	0	0.0	C	0.0	3737	88.67	0	0.0	0	0.0	30034	695.71
SM	187	1.13	0	0.0	0	0.0	0	0.0	29	0.14	0	0.0	0	0.0	1767	6.19
YP	27	2.59	C	0.0	0	0.0	C	0.0	29	3.70	0	0.0	0	0.0	161	14.86
TP	27	0.19	C	0.0	0	0.0	C	0.0	48	0.36	0	0.0	0	0.0	994	4.91
JD	0	0.0	C	0.0	0	0.0	C	0.0	0	0.0	0	0.0	0	0.0	2	0.0
HS	0	0.0	C	0.0	0	0.0	0	0.0	0	0.0	0	0.0	0	0.0	1	0.0
LS	0	0.0	C	0.0	0	0.0	C	0.0	1	0.50	0	0.0	0	0.0	5	5.38
CH	0	0.0	0	0.0	0	0.0	0	0.0	0	0.0	0	0.0	0	0.0	2	0.02
MS	0	0.0	C	0.0	0	0.0	0	0.0	7	0.06	0	0.0	0	0.0	8	0.07
NS	0	0.0	C	0.0	0	0.0	0	0.0	0	0.0	0	0.0	0	0.0	1	0.00
SS	0	0.0	C	0.0	0	0.0	0	0.0	1	0.00	0	0.0	0	0.0	42	0.19
XC	0	0.0	C	0.0	0	0.0	0	0.0	1	0.01	0	0.0	0	0.0	623	5.01
BR	0	0.0	C	0.0	0	0.0	0	0.0	0	0.0	0	0.0	0	0.0	5	1.56
TOTALS	5950	133.07	C	0.0	0	0.0	0	0.0	3964	94.41	0	0.0	0	0.0	34653	741.14
PERCENT	17.17	17.96	0.0	0.0	0.0	0.0	0.0	0.0	11.44	12.74	0.0	0.0	0.0	0.0	100.00	100.00

MCNTH: JULY, 1979

WEIGHT IN KILOGRAMS
TEMPERATURE IN DEGREES CENTIGRADE
PERCENTAGES ARE OF TOTAL SAMPLED THIS MONTH

SPECIES	DAILY AVG NUMBER	STD DEV NUMBER	DAILY AVG WEIGHT	STD DEV WEIGHT	PERCENT NUMBER	TOTAL NUMBER	PERCENT WEIGHT	TOTAL WEIGHT	ESTIMATED TOTALS FOR MONTH NUMBER	ESTIMATED TOTALS FOR MONTH WEIGHT
SP	144.00	156.33	C.91	C.86	2.91	1008	0.86	6.37	4320	27.31
AL	4290.57	3051.19	99.39	61.28	86.67	30034	93.87	695.71	128717	2981.60
SM	252.43	475.81	0.88	1.39	5.10	1767	0.84	6.19	7572	26.55
YP	23.00	21.39	2.12	1.87	0.46	161	2.00	14.86	690	63.68
TP	142.00	307.60	C.70	1.32	2.87	994	0.66	4.91	4260	21.03
JD	0.29	0.76	0.00	0.00	0.01	2	0.00	0.01	8	0.02
WS	0.14	0.38	C.12	0.32	0.00	1	0.11	0.85	4	3.64
LS	0.71	0.49	C.77	0.69	0.01	5	0.73	5.30	21	23.08
CH	0.29	0.76	0.00	0.01	0.01	2	0.00	0.02	8	0.10
MS	1.14	2.61	C.01	0.02	0.02	8	0.01	0.07	34	0.32
NS	0.14	0.38	C.00	0.00	0.00	1	0.00	0.00	4	0.01
SS	6.00	9.73	C.03	0.04	0.12	42	0.03	0.19	180	0.83
XC	89.00	221.48	C.72	1.75	1.80	623	0.68	5.01	2670	21.47
BR	0.71	0.76	0.22	0.39	0.01	5	0.21	1.56	21	6.67
TOTAL	4950.43	4070.49	105.88	66.46	100.00	34653	100.00	741.14	148512	3176.31

THERE WERE 7 DAYS ON WHICH SAMPLES WERE TAKEN.
ESTIMATED TOTALS FOR THIS MONTH ARE BASED ON 30 DAYS OF IMPINGEMENT.

MONTH: AUGUST, 1979

WEIGHT IN KILOGRAMS
TEMPERATURE IN DEGREES CENTIGRADE
PERCENTAGES ARE OF TOTAL SAMPLED THIS MONTH

	1		2		3		4		5		6		7		8	
TEMP C	NO SAMPLING		22.6		NO SAMPLING		NO SAMPLING		NO SAMPLING		25.2		NO SAMPLING		NO SAMPLING	
SPECIES	NUMBER	WEIGHT	NUMBER	WEIGHT	NUMBER	WEIGHT	NUMBER	WEIGHT	NUMBER	WEIGHT	NUMBER	WEIGHT	NUMBER	WEIGHT	NUMBER	WEIGHT
SP	0	0.0	68	0.53	0	0.0	C	0.0	0	0.0	68	0.49	0	0.0	0	0.0
AL	0	0.0	1366	35.05	0	0.0	0	0.0	0	0.0	894	22.40	0	0.0	0	0.0
SH	0	0.0	110	C.33	0	0.0	C	0.0	0	0.0	1	0.01	0	0.0	0	0.0
YP	0	0.0	24	2.05	0	0.0	C	0.0	0	0.0	12	1.00	0	0.0	0	0.0
TP	0	0.0	34	C.31	0	0.0	0	0.0	0	0.0	17	0.11	0	0.0	0	0.0
JD	0	0.0	2	0.00	0	0.0	0	0.0	0	0.0	1	0.00	0	0.0	0	0.0
HS	0	0.0	1	C.56	0	0.0	0	0.0	0	0.0	0	0.0	0	0.0	0	0.0
LS	0	0.0	0	C.0	0	0.0	0	0.0	0	0.0	0	0.0	0	0.0	0	0.0
LT	0	0.0	C	0.0	0	0.0	C	0.0	0	0.0	0	0.0	0	C.0	0	0.0
CH	0	0.0	2	C.03	0	0.0	C	0.0	0	0.0	0	0.0	0	0.0	0	0.0
CP	0	0.0	C	0.0	0	0.0	C	0.0	0	0.0	0	0.0	0	0.0	0	0.0
MS	0	0.0	E	C.08	0	0.0	C	0.0	0	0.0	1	0.01	0	0.0	0	0.0
SS	0	0.0	2	C.00	0	0.0	0	0.0	0	0.0	2	0.01	0	0.0	0	0.0
GS	0	0.0	C	0.0	0	0.0	C	0.0	0	0.0	0	0.0	0	0.0	0	0.0
XC	0	0.0	2	C.02	0	0.0	0	0.0	0	0.0	0	0.0	0	0.0	0	0.0
BR	0	0.0	C	0.0	0	0.0	0	0.0	0	0.0	0	0.0	0	0.0	0	0.0
TOTALS	0	0.0	1615	39.00	0	0.0	C	0.0	0	0.0	996	24.04	0	0.0	0	0.0
PERCENT	0.0	0.0	27.55	30.60	0.0	0.0	0.0	0.0	0.0	0.0	16.95	18.86	0.0	0.0	0.0	0.0

MONTH: AUGUST, 1979

WEIGHT IN KILOGRAMS
TEMPERATURE IN DEGREES CENTIGRADE
PERCENTAGES ARE OF TOTAL SAMPLED THIS MONTH

	9		10		11		12		13		14		15		16	
TEMP C	NO SAMPLING		25.8		NO SAMPLING		NO SAMPLING		NO SAMPLING		21.6		NO SAMPLING		NO SAMPLING	
SPECIES	NUMBER	WEIGHT	NUMBER	WEIGHT	NUMBER	WEIGHT	NUMBER	WEIGHT	NUMBER	WEIGHT	NUMBER	WEIGHT	NUMBER	WEIGHT	NUMBER	WEIGHT
SP	0	0.0	23	0.14	0	0.0	0	0.0	0	0.0	39	0.31	0	0.0	0	0.0
AL	0	0.0	1600	27.17	0	0.0	0	0.0	0	0.0	175	3.26	0	0.0	0	0.0
SM	0	0.0	C	C.0	0	0.0	C	0.0	0	0.0	49	0.42	0	0.0	0	0.0
YP	0	0.0	13	1.52	0	0.0	C	0.0	0	0.0	80	3.82	0	0.0	0	0.0
TP	0	0.0	21	C.13	0	0.0	C	0.0	0	0.0	74	0.68	0	0.0	0	0.0
JD	0	0.0	C	0.0	0	0.0	0	0.0	0	0.0	0	0.0	0	0.0	0	0.0
WS	0	0.0	C	C.0	0	0.0	C	0.0	0	0.0	0	0.0	0	0.0	0	0.0
LS	0	0.0	0	0.0	0	0.0	C	0.0	0	0.0	0	0.0	0	0.0	0	0.0
LT	0	0.0	C	0.0	0	0.0	C	0.0	0	0.0	0	0.0	0	0.0	0	0.0
CH	0	0.0	0	C.0	0	0.0	0	0.0	0	0.0	1	0.01	0	0.0	0	0.0
CP	0	0.0	C	C.0	0	0.0	0	0.0	0	0.0	0	0.0	0	0.0	0	0.0
MS	0	0.0	C	0.0	0	0.0	0	0.0	0	0.0	1	0.00	0	0.0	0	0.0
SS	0	0.0	1	C.00	0	0.0	0	0.0	0	0.0	0	0.0	0	0.0	0	0.0
GS	0	0.0	C	C.0	0	0.0	0	0.0	0	0.0	1	0.65	0	0.0	0	0.0
XC	0	0.0	C	0.0	0	0.0	0	0.0	0	0.0	1	0.01	0	0.0	0	0.0
BR	0	0.0	C	0.0	0	0.0	C	0.0	0	0.0	0	0.0	0	0.0	0	0.0
TOTALS	0	0.0	1658	28.97	0	0.0	C	0.0	0	0.0	421	9.21	0	0.0	0	0.0
PERCENT	0.0	0.0	28.21	22.72	C.0	0.0	0.0	0.0	0.0	0.0	7.16	7.22	0.0	0.0	0.0	0.0

MCNTH: AUGUST, 1979

WEIGHT IN KILOGRAMS
TEMPERATURE IN DEGREES CENTIGRADE
PERCENTAGES ARE OF TOTAL SAMPLED THIS MONTH

	17		18		19		20		21		22		23		24	
TEMP C	NO SAMPLING		22.6		NO SAMPLING		NO SAMPLING		NO SAMPLING		21.3		NO SAMPLING		NO SAMPLING	
SPECIES	NUMBER	WEIGHT	NUMBER	WEIGHT	NUMBER	WEIGHT	NUMBER	WEIGHT	NUMBER	WEIGHT	NUMBER	WEIGHT	NUMBER	WEIGHT	NUMBER	WEIGHT
SP	0	0.0	251	1.66	0	0.0	C	0.0	0	0.0	157	1.15	0	0.0	0	0.0
AL	0	0.0	38	0.75	0	0.0	0	0.0	0	0.0	36	0.79	0	0.0	0	0.0
SM	0	0.0	149	1.05	0	0.0	C	0.0	0	0.0	199	1.63	0	0.0	0	0.0
YP	0	0.0	97	5.01	0	0.0	C	0.0	0	0.0	28	1.26	0	0.0	0	0.0
TP	0	0.0	57	C.52	0	0.0	C	0.0	C	C.0	30	0.32	0	C.0	0	0.0
JD	0	0.0	C	0.0	0	0.0	0	0.0	0	0.0	0	0.0	0	0.0	0	0.0
HS	0	0.0	C	C.0	0	0.0	0	0.0	0	0.0	1	0.05	0	0.0	0	0.0
LS	0	0.0	1	C.83	0	0.0	0	0.0	0	0.0	1	0.20	0	0.0	0	0.0
LT	0	0.0	2	5.1C	0	0.0	0	0.0	0	0.0	1	2.00	0	0.0	0	0.0
CH	0	0.0	C	0.0	0	0.0	C	0.0	0	C.0	0	0.0	0	0.0	0	0.0
CP	0	0.0	C	C.0	0	0.0	C	0.0	0	0.0	1	0.01	0	0.0	0	0.0
MS	0	0.0	1	0.01	0	0.0	C	0.0	0	0.0	1	0.00	0	0.0	0	0.0
SS	0	0.0	1	C.02	0	0.0	C	0.0	0	0.0	0	0.0	0	0.0	0	0.0
GS	0	0.0	C	C.0	0	0.0	0	0.0	0	0.0	0	0.0	0	0.0	0	0.0
XC	0	0.0	C	C.0	0	0.0	0	0.0	0	0.0	0	0.0	0	0.0	0	0.0
BR	0	0.0	1	C.03	0	0.0	C	0.0	0	0.0	0	0.0	0	0.0	0	0.0
TOTALS	0	0.0	598	15.03	0	0.0	C	0.0	0	0.0	455	7.41	0	0.0	0	0.0
PERCENT	0.0	0.0	10.18	11.75	0.0	0.0	0.0	0.0	0.0	0.0	7.74	5.81	0.0	0.0	0.0	0.0

MONTH: AUGUST, 1979

WEIGHT IN KILOGRAMS
TEMPERATURE IN DEGREES CENTIGRADE
PERCENTAGES ARE OF TOTAL SAMPLED THIS MONTH

	25		26		27		28		29		30		31			
TEMP C	NO SAMPLING		NO SAMPLING		NO SAMPLING		NO SAMPLING		NO SAMPLING		23.4		NO SAMPLING			
SPECIES	NUMBER	WEIGHT	NUMBER	WEIGHT	NUMBER	WEIGHT	NUMBER	WEIGHT	NUMBER	WEIGHT	NUMBER	WEIGHT	NUMBER	WEIGHT	TOT. NO.	TOT. WT.
SP	0	0.0	C	C.0	0	0.0	C	0.0	0	0.0	43	0.28	0	0.0	649	4.56
AL	0	0.0	C	0.0	0	0.0	0	0.0	0	0.0	24	0.47	0	0.0	4133	89.94
SM	0	0.0	C	C.0	0	0.0	C	0.0	0	0.0	22	0.22	0	C.0	530	3.66
YP	0	0.0	C	C.0	0	0.0	0	0.0	0	0.0	18	1.51	0	0.0	272	16.21
TP	0	0.0	C	0.0	0	0.0	C	0.0	0	0.0	20	0.17	0	0.0	253	2.25
JD	0	0.0	C	0.0	0	0.0	0	0.0	0	0.0	0	0.0	0	0.0	3	0.01
WS	0	0.0	C	C.0	0	0.0	C	0.0	0	0.0	1	1.14	0	0.0	3	1.75
LS	0	0.0	C	0.0	0	0.0	0	0.0	0	0.0	0	0.0	0	0.0	2	1.0
LT	0	0.0	C	0.0	0	0.0	C	0.0	0	0.0	0	0.0	0	0.0	3	7.1
CH	0	0.0	0	C.0	0	0.0	0	0.0	0	0.0	0	0.0	0	0.0	3	0.04
CP	0	0.0	C	C.0	0	0.0	C	0.0	0	C.C	0	0.0	0	C.0	1	0.01
MS	0	0.0	C	C.0	0	0.0	C	0.0	0	0.0	1	0.02	0	0.0	13	0.13
SS	0	0.0	C	0.0	0	0.0	C	0.0	0	0.0	1	0.01	0	0.0	7	0.04
GS	0	0.0	C	C.0	0	0.0	C	0.0	0	0.0	0	0.0	0	0.0	1	0.69
XC	0	0.0	C	0.0	0	0.0	0	0.0	0	0.0	0	0.0	0	0.0	3	0.03
BR	0	0.0	C	0.0	0	0.0	C	0.0	0	0.0	0	0.0	0	0.0	1	0.03
TOTALS	0	0.0	C	C.0	0	0.0	C	0.0	0	0.0	130	3.82	0	0.0	5877	127.47
PERCENT	0.0	0.0	0.0	C.0	0.0	0.0	0.0	0.0	0.0	0.0	2.21	2.99	0.0	0.0	100.00	100.00

MONTH: AUGUST, 1979

WEIGHT IN KILOGRAMS
TEMPERATURE IN DEGREES CENTIGRADE
PERCENTAGES ARE OF TOTAL SAMPLED THIS MONTH

SPECIES	DAILY AVG NUMBER	STD DEV NUMBER	DAILY AVG WEIGHT	STD DEV WEIGHT	PERCENT NUMBER	TOTAL NUMBER	PERCENT WEIGHT	TOTAL WEIGHT	ESTIMATED TOTALS FOR MONTH NUMBER	ESTIMATED TOTALS FOR MONTH WEIGHT
SP	92.71	82.29	C.65	0.55	11.04	649	3.57	4.56	2874	20.17
AL	590.43	685.43	12.85	14.86	70.32	4133	70.56	89.94	18303	398.29
SM	75.71	78.17	0.52	C.60	9.02	530	2.88	3.66	2347	16.23
YP	38.86	34.73	2.32	1.51	4.63	272	12.72	16.21	1204	71.79
TP	36.14	21.47	C.32	C.21	4.30	253	1.76	2.25	1120	9.96
JD	0.43	0.79	C.00	0.00	0.05	3	0.00	0.01	13	0.03
WS	0.43	0.53	C.25	0.44	0.05	3	1.37	1.75	13	7.76
LS	0.29	0.49	0.15	0.31	0.03	2	0.81	1.03	8	4.55
LT	0.43	0.79	1.01	1.95	0.05	3	5.57	7.10	13	31.44
CH	0.43	0.79	0.01	0.01	0.05	3	0.03	0.04	13	0.18
CP	0.14	0.38	C.00	C.00	0.02	1	0.01	0.01	4	0.04
MS	1.86	2.73	0.02	0.03	0.22	13	0.10	0.13	57	0.56
SS	1.00	0.82	0.01	0.01	0.12	7	0.03	0.04	31	0.19
GS	0.14	0.38	C.10	0.26	0.02	1	0.54	0.69	4	3.04
XC	0.43	0.79	0.00	0.01	0.05	3	0.02	0.03	13	0.12
BR	0.14	0.38	0.00	0.01	0.02	1	0.03	0.03	4	0.15
TOTAL	839.57	603.70	18.21	12.89	100.00	5877	100.00	127.47	26026	564.49

THERE WERE 7 DAYS ON WHICH SAMPLES WERE TAKEN.
ESTIMATED TOTALS FOR THIS MONTH ARE BASED ON 31 DAYS OF IMPINGEMENT.

MCNTH: SEPTEMBER, 1979

WEIGHT IN KILOGRAMS
TEMPERATURE IN DEGREES CENTIGRADE
PERCENTAGES ARE OF TOTAL SAMPLED THIS MONTH

	1		2		3		4		5		6		7		8	
TEMP C	NO SAMPLING		NO SAMPLING		24.4		NO SAMPLING		NO SAMPLING		NO SAMPLING		16.8		NO SAMPLING	
SPECIES	NUMBER	HEIGHT	NUMBER	HEIGHT	NUMBER	HEIGHT	NUMBER	HEIGHT	NUMBER	HEIGHT	NUMBER	HEIGHT	NUMBER	HEIGHT	NUMBER	HEIGHT
SP	0	0.0	0	0.0	50	0.32	0	0.0	0	0.0	0	0.0	6382	47.67	0	0.0
AL	0	0.0	0	0.0	12	0.22	0	0.0	0	0.0	0	0.0	84773	209.17	0	0.0
SM	0	0.0	0	0.0	18	0.15	0	0.0	0	0.0	0	0.0	8734	53.32	0	0.0
YP	0	0.0	0	0.0	9	0.52	0	0.0	0	0.0	0	0.0	16332	712.78	0	0.0
TP	0	0.0	0	0.0	26	0.15	0	0.0	0	0.0	0	0.0	1658	11.09	0	0.0
JD	0	0.0	0	0.0	0	0.0	0	0.0	0	0.0	0	0.0	4	0.01	0	0.0
LS	0	0.0	0	0.0	0	0.0	0	0.0	0	0.0	0	0.0	2	0.93	0	0.0
LT	0	0.0	0	0.0	1	2.59	0	0.0	0	0.0	0	0.0	0	0.0	0	0.0
CH	0	0.0	0	0.0	0	0.0	0	0.0	0	0.0	0	0.0	1	0.18	0	0.0
HS	0	0.0	0	0.0	2	0.01	0	0.0	0	0.0	0	0.0	3	0.01	0	0.0
SS	0	0.0	0	0.0	0	0.0	0	0.0	0	0.0	0	0.0	0	0.0	0	0.0
CC	0	0.0	0	0.0	0	0.0	0	0.0	0	0.0	0	0.0	1	0.14	0	0.0
GS	0	0.0	0	0.0	0	0.0	0	0.0	0	0.0	0	0.0	0	0.0	0	0.0
XC	0	0.0	0	0.0	0	0.0	0	0.0	0	0.0	0	0.0	16	0.23	0	0.0
BR	0	0.0	0	0.0	2	0.04	0	0.0	0	0.0	0	0.0	2	0.31	0	0.0
FD	0	0.0	0	0.0	0	0.0	0	0.0	0	0.0	0	0.0	1	0.75	0	0.0
HC	0	0.0	0	0.0	0	0.0	0	0.0	0	0.0	0	0.0	1	0.14	0	0.0
TOTALS	0	0.0	0	0.0	120	3.99	0	0.0	0	0.0	0	0.0	117910	1036.74	0	0.0
PERCENT	0.0	0.0	0.0	0.0	0.10	0.36	0.0	0.0	0.0	0.0	0.0	0.0	96.01	92.77	0.0	0.0

MONTH: SEPTEMBER, 1979

WEIGHT IN KILOGRAMS

TEMPERATURE IN DEGREES CENTIGRADE

PERCENTAGES ARE OF TOTAL SAMPLED THIS MONTH

	9		10		11		12		13		14		15		16	
TEMP C	NO SAMPLING		NO SAMPLING		21.5		NO SAMPLING		NO SAMPLING		NO SAMPLING		19.9		NO SAMPLING	
SPECIES	NUMBER	WEIGHT	NUMBER	WEIGHT	NUMBER	WEIGHT	NUMBER	WEIGHT	NUMBER	WEIGHT	NUMBER	WEIGHT	NUMBER	WEIGHT	NUMBER	WEIGHT
SP	0	0.0	0	0.0	36	0.31	C	0.0	C	0.0	0	0.0	34	0.31	0	0.0
AL	0	0.0	0	0.0	456	1.41	0	0.0	0	0.0	0	0.0	179	0.49	0	0.0
SM	0	0.0	0	0.0	35	0.40	C	0.0	0	0.0	0	0.0	11	0.22	0	0.0
YP	0	0.0	C	0.0	22	1.72	0	0.0	0	0.0	0	0.0	23	1.44	0	0.0
TP	0	0.0	0	0.0	6	0.07	0	0.0	0	0.0	0	0.0	6	0.06	0	0.0
JD	0	0.0	0	0.0	0	0.0	0	0.0	0	0.0	0	0.0	0	0.0	0	0.0
LS	0	0.0	C	0.0	1	0.80	C	0.0	0	0.0	0	0.0	0	0.0	0	0.0
LT	0	0.0	0	0.0	1	3.05	0	0.0	0	0.0	0	0.0	1	3.25	0	0.0
CH	0	0.0	C	0.0	0	0.0	C	0.0	0	0.0	0	0.0	0	0.0	0	0.0
HS	0	0.0	0	0.0	1	0.01	0	0.0	0	0.0	0	0.0	2	0.02	0	0.0
SS	0	0.0	C	0.0	0	0.0	0	0.0	0	0.0	0	0.0	0	0.0	0	0.0
CC	0	0.0	C	0.0	0	0.0	0	0.0	0	0.0	0	0.0	1	2.25	0	0.0
GS	0	0.0	C	0.0	0	0.0	C	0.0	0	0.0	0	0.0	0	0.0	0	0.0
XC	0	0.0	C	0.0	8	0.02	0	0.0	0	0.0	0	0.0	0	0.0	0	0.0
BR	0	0.0	C	0.0	2	0.09	C	0.0	0	0.0	0	0.0	0	0.0	0	0.0
FD	0	0.0	0	0.0	0	0.0	0	0.0	0	0.0	0	0.0	0	0.0	0	0.0
WC	0	0.0	C	0.0	0	0.0	0	0.0	0	0.0	0	0.0	0	0.0	0	0.0
TOTALS	0	0.0	C	0.0	568	7.87	C	0.0	0	0.0	0	0.0	257	8.04	0	0.0
PERCENT	0.0	0.0	0.0	0.0	0.46	0.70	0.0	0.0	0.0	0.0	0.0	0.0	0.21	0.72	0.0	0.0

MONTH: SEPTEMBER, 1979

WEIGHT IN KILOGRAMS
TEMPERATURE IN DEGREES CENTIGRADE
PERCENTAGES ARE OF TOTAL SAMPLED THIS MONTH

	17		18		19		20		21		22		23		24	
TEMP C	NO SAMPLING		NO SAMPLING		20.6		NO SAMPLING		NO SAMPLING		NO SAMPLING		13.4		NO SAMPLING	
SPECIES	NUMBER	WEIGHT	NUMBER	WEIGHT	NUMBER	WEIGHT	NUMBER	WEIGHT	NUMBER	WEIGHT	NUMBER	WEIGHT	NUMBER	WEIGHT	NUMBER	WEIGHT
SP	0	0.0	0	0.0	188	1.46	0	0.0	0	0.0	0	0.0	952	10.13	0	0.0
AL	0	0.0	0	0.0	384	1.13	0	0.0	0	0.0	0	0.0	1120	7.51	0	0.0
SM	0	0.0	0	0.0	68	1.25	0	0.0	0	0.0	0	0.0	225	2.76	0	0.0
YP	0	0.0	0	0.0	57	2.99	0	0.0	0	0.0	0	0.0	368	7.07	0	0.0
TP	0	0.0	0	0.0	52	0.46	0	0.0	0	0.0	0	0.0	178	2.01	0	0.0
JD	0	0.0	0	0.0	0	0.0	0	0.0	0	0.0	0	0.0	0	0.0	0	0.0
LS	0	0.0	0	0.0	1	2.00	0	0.0	0	0.0	0	0.0	0	0.0	0	0.0
LT	0	0.0	0	0.0	0	0.0	0	0.0	0	0.0	0	0.0	3	10.60	0	0.0
CH	0	0.0	0	0.0	0	0.0	0	0.0	0	0.0	0	0.0	1	0.05	0	0.0
MS	0	0.0	0	0.0	2	0.01	0	0.0	0	0.0	0	0.0	1	0.01	0	0.0
SS	0	0.0	0	0.0	2	0.01	0	0.0	0	0.0	0	0.0	7	0.04	0	0.0
CC	0	0.0	0	0.0	0	0.0	0	0.0	0	0.0	0	0.0	1	0.00	0	0.0
GS	0	0.0	0	0.0	0	0.0	0	0.0	0	0.0	0	0.0	1	1.10	0	0.0
XC	0	0.0	0	0.0	2	0.00	0	0.0	0	0.0	0	0.0	7	0.02	0	0.0
BR	0	0.0	0	0.0	1	0.05	0	0.0	0	0.0	0	0.0	0	0.0	0	0.0
FD	0	0.0	0	0.0	0	0.0	0	0.0	0	0.0	0	0.0	0	0.0	0	0.0
WC	0	0.0	0	0.0	0	0.0	0	0.0	0	0.0	0	0.0	0	0.0	0	0.0
TOTALS	0	0.0	0	0.0	757	9.37	0	0.0	0	0.0	0	0.0	2864	41.30	0	0.0
PERCENT	0.0	0.0	0.0	0.0	0.62	0.84	0.0	0.0	0.0	0.0	0.0	0.0	2.33	3.70	0.0	0.0

WEIGHT IN KILOGRAMS
TEMPERATURE IN DEGREES CENTIGRADE
PERCENTAGES ARE OF TOTAL SAMPLED THIS MONTH

MONTH: SEPTEMBER, 1979

HEIGHT IN KILOGRAMS

TEMPERATURE IN DEGREES CENTIGRACE

PERCENTAGES ARE OF TOTAL SAMPLED THIS MONTH

TEMP C	25		26		27		28		29		30		31		TOT. NC.	TOT. WT.
	NO SAMPLING NUMBER	WEIGHT	NO SAMPLING NUMBER	WEIGHT	19.9 NUMBER	WEIGHT	NO SAMPLING NUMBER	WEIGHT	NO SAMPLING NUMBER	WEIGHT	NO SAMPLING NUMBER	WEIGHT	NO SAMPLING NUMBER	WEIGHT		
SPECIES																
SP	0	0.0	0	0.0	240	2.53	C	0.0	0	0.0	0	0.0	0	0.0	7882	62.73
AL	0	0.0	0	0.0	40	0.48	0	0.0	0	0.0	0	0.0	0	0.0	86964	220.41
SM	0	0.0	C	0.0	17	0.40	C	0.0	0	0.0	0	0.0	0	0.0	9108	58.50
YP	0	0.0	0	0.0	17	1.18	C	0.0	0	0.0	0	0.0	0	0.0	16828	727.70
TP	0	0.0	C	0.0	12	0.14	0	0.0	0	0.0	0	0.0	0	0.0	1938	13.97
JD	0	0.0	0	0.0	0	0.0	0	0.0	0	0.0	0	0.0	0	0.0	4	0.01
LS	0	0.0	C	0.0	0	0.0	C	0.0	0	0.0	0	0.0	0	0.0	4	3.73
LT	0	0.0	G	0.0	2	5.40	0	0.0	0	0.0	0	0.0	0	0.0	8	24.89
CH	0	0.0	C	0.0	0	0.0	0	0.0	0	0.0	0	0.0	0	0.0	2	0.23
MS	0	0.0	C	0.0	0	0.0	0	0.0	0	0.0	0	0.0	0	0.0	11	0.07
SS	0	0.0	0	0.0	0	0.0	0	0.0	0	0.0	0	0.0	0	0.0	9	0.06
CC	0	0.0	C	0.0	0	0.0	0	0.0	0	0.0	0	0.0	0	0.0	3	2.40
GS	0	0.0	C	0.0	0	0.0	0	0.0	0	0.0	0	0.0	0	0.0	1	1.10
XC	0	0.0	C	0.0	0	0.0	C	0.0	0	0.0	0	0.0	0	0.0	33	0.27
BR	0	0.0	0	0.0	1	0.13	0	0.0	0	0.0	0	0.0	0	0.0	8	0.62
FD	0	0.0	0	0.0	0	0.0	0	0.0	0	0.0	0	0.0	0	0.0	1	0.75
WC	0	0.0	0	0.0	0	0.0	0	0.0	0	0.0	0	0.0	0	0.0	1	0.14
TOTALS	0	0.0	0	0.0	329	10.26	0	0.0	0	0.0	0	0.0	0	0.0	122805	1117.57
PERCENT	0.0	0.0	0.0	0.0	0.27	0.92	0.0	0.0	0.0	0.0	0.0	0.0	0.0	0.0	100.00	100.00

2000



MONTH: SEPTEMBER, 1979

WEIGHT IN KILOGRAMS
TEMPERATURE IN DEGREES CENTIGRADE
PERCENTAGES ARE OF TOTAL SAMPLED THIS MONTH

SPECIES	DAILY AVG NUMBER	STD DEV NUMBER	DAILY AVG WEIGHT	STD DEV WEIGHT	PERCENT NUMBER	TOTAL NUMBER	PERCENT WEIGHT	TOTAL WEIGHT	ESTIMATED TOTALS FOR MONTH	
									NUMBER	WEIGHT
SP	1126.00	2340.19	8.96	17.43	6.42	7882	5.61	62.73	33780	268.83
AL	12423.43	0.0	31.49	78.39	70.81	86964	19.72	220.41	372702	944.61
SM	1301.14	3278.44	8.36	19.85	7.42	9168	5.23	58.50	39034	250.70
YP	2404.00	6143.02	103.96	268.48	13.70	16828	65.11	727.70	72120	3118.71
TP	276.86	612.06	2.00	4.07	1.58	1938	1.25	13.97	8305	59.88
JD	0.57	1.51	0.00	0.00	0.00	4	0.00	0.01	17	0.04
LS	0.57	0.79	0.53	0.77	0.00	4	0.33	3.73	17	16.00
LT	1.14	1.07	3.56	3.64	0.01	8	2.23	24.89	34	106.69
CH	0.29	0.49	0.03	0.07	0.00	2	0.02	0.23	8	0.97
MS	1.57	0.98	0.01	0.01	0.01	11	0.01	0.07	47	0.30
SS	1.29	2.63	0.01	0.02	0.01	9	0.01	0.06	38	0.25
CC	0.43	0.53	0.34	0.84	0.00	3	0.21	2.40	12	10.27
GS	0.14	0.38	0.16	0.42	0.00	1	0.10	1.10	4	4.71
XC	4.71	6.02	0.04	0.09	0.03	33	0.02	0.27	141	1.18
BR	1.14	0.90	0.09	0.11	0.01	8	0.06	0.62	34	2.65
FD	0.14	0.38	0.11	0.28	0.00	1	0.07	0.75	4	3.20
HC	0.14	0.38	0.02	0.05	0.00	1	0.01	0.14	4	0.62
TCTAL	17543.57	0.0	155.65	386.96	100.00	122805	100.00	1117.57	526307	4789.60

THERE WERE 7 DAYS ON WHICH SAMPLES WERE TAKEN.
ESTIMATED TOTALS FOR THIS MONTH ARE BASED ON 30 DAYS OF IMPINGEMENT.

MONTH: OCTOBER, 1979

WEIGHT IN KILCGRAMS

TEMPERATURE IN DEGREES CENTIGRADE

PERCENTAGES ARE OF TOTAL SAMPLED THIS MONTH

	1		2		3		4		5		6		7		8	
TEMP C	19.3		NO SAMPLING		NO SAMPLING		NO SAMPLING		19.1		NO SAMPLING		NO SAMPLING		NO SAMPLING	
SPECIES	NUMBER	WEIGHT	NUMBER	WEIGHT	NUMBER	WEIGHT	NUMBER	WEIGHT	NUMBER	WEIGHT	NUMBER	WEIGHT	NUMBER	WEIGHT	NUMBER	WEIGHT
SP	250	2.00	0	0.0	0	0.0	0	0.0	113	1.06	0	0.0	0	0.0	0	0.0
AL	77	0.40	0	0.0	0	0.0	0	0.0	15	0.24	0	0.0	0	0.0	0	0.0
SM	11	0.13	0	0.0	0	0.0	0	0.0	2	0.06	0	0.0	0	0.0	0	0.0
YP	21	0.70	0	0.0	0	0.0	0	0.0	15	1.59	0	0.0	0	0.0	0	0.0
TP	24	0.24	0	0.0	0	0.0	0	0.0	5	0.06	0	0.0	0	0.0	0	0.0
WS	0	0.0	0	0.0	0	0.0	0	0.0	0	0.0	0	0.0	0	0.0	0	0.0
IS	0	0.0	0	0.0	0	0.0	0	0.0	0	0.0	0	0.0	0	0.0	0	0.0
LT	0	0.0	0	0.0	0	0.0	0	0.0	0	0.0	0	0.0	0	0.0	0	0.0
MS	0	0.0	0	0.0	0	0.0	0	0.0	0	0.0	0	0.0	0	0.0	0	0.0
SS	1	0.01	0	0.0	0	0.0	0	0.0	1	0.01	0	0.0	0	0.0	0	0.0
GS	2	2.85	0	0.0	0	0.0	0	0.0	0	0.0	0	0.0	0	0.0	0	0.0
XC	3	0.08	0	0.0	0	0.0	0	0.0	0	0.0	0	0.0	0	0.0	0	0.0
EB	0	0.0	0	0.0	0	0.0	0	0.0	0	0.0	0	0.0	0	0.0	0	0.0
LB	0	0.0	0	0.0	0	0.0	0	0.0	0	0.0	0	0.0	0	0.0	0	0.0
MA	0	0.0	0	0.0	0	0.0	0	0.0	0	0.0	0	0.0	0	0.0	0	0.0
TOTALS	389	6.41	0	0.0	0	0.0	0	0.0	151	3.03	0	0.0	0	0.0	0	0.0
PERCENT	21.80	9.25	0.0	0.0	0.0	0.0	0.0	0.0	8.46	4.38	0.0	0.0	0.0	0.0	0.0	0.0

MONTH: OCTOBER, 1979

WEIGHT IN KILOGRAMS
TEMPERATURE IN DEGREES CENTIGRADE
PERCENTAGES ARE OF TOTAL SAMPLED THIS MONTH

	9		10		11		12		13		14		15		16	
TEMP C	16.9		NO SAMPLING		NO SAMPLING		NO SAMPLING		14.5		NO SAMPLING		NO SAMPLING		NO SAMPLING	
SPECIES	NUMBER	WEIGHT	NUMBER	WEIGHT	NUMBER	WEIGHT	NUMBER	WEIGHT	NUMBER	WEIGHT	NUMBER	WEIGHT	NUMBER	WEIGHT	NUMBER	WEIGHT
SP	220	2.21	0	0.0	0	0.0	0	0.0	214	2.05	0	0.0	0	0.0	0	0.0
AI	42	0.44	0	0.0	0	0.0	0	0.0	153	2.77	0	0.0	0	0.0	0	0.0
SE	21	0.51	0	0.0	0	0.0	0	0.0	26	0.52	0	0.0	0	0.0	0	0.0
YP	13	1.16	0	0.0	0	0.0	0	0.0	27	2.52	0	0.0	0	0.0	0	0.0
TP	80	0.98	0	0.0	0	0.0	0	0.0	153	2.02	0	0.0	0	0.0	0	0.0
WS	1	0.02	0	0.0	0	0.0	0	0.0	1	0.01	0	0.0	0	0.0	0	0.0
LS	0	0.0	0	0.0	0	0.0	0	0.0	2	3.25	0	0.0	0	0.0	0	0.0
LT	1	3.40	0	0.0	0	0.0	0	0.0	2	6.65	0	0.0	0	0.0	0	0.0
MS	1	0.01	0	0.0	0	0.0	0	0.0	2	0.01	0	0.0	0	0.0	0	0.0
SS	0	0.0	0	0.0	0	0.0	0	0.0	2	0.01	0	0.0	0	0.0	0	0.0
GS	4	0.91	0	0.0	0	0.0	0	0.0	7	1.59	0	0.0	0	0.0	0	0.0
XC	1	0.00	0	0.0	0	0.0	0	0.0	0	0.0	0	0.0	0	0.0	0	0.0
ER	0	0.0	0	0.0	0	0.0	0	0.0	2	0.11	0	0.0	0	0.0	0	0.0
LE	0	0.0	0	0.0	0	0.0	0	0.0	0	0.0	0	0.0	0	0.0	0	0.0
HA	0	0.0	0	0.0	0	0.0	0	0.0	1	2.40	0	0.0	0	0.0	0	0.0
TOTALS	384	9.63	0	0.0	0	0.0	0	0.0	592	23.91	0	0.0	0	0.0	0	0.0
PERCENT	21.52	13.91	0.0	0.0	0.0	0.0	0.0	0.0	33.18	34.51	0.0	0.0	0.0	0.0	0.0	0.0

MONTH: OCTOBER, 1979

WEIGHT IN KILOGRAMS

TEMPERATURE IN DEGREES CENTIGRADE

PERCENTAGES ARE OF TOTAL SAMPLED THIS MONTH

	17		18		19		20		21		22		23		24	
TEMP C	NO SAMPLING		NO SAMPLING		NO SAMPLING		NO SAMPLING		15.4		NO SAMPLING		NO SAMPLING		NO SAMPLING	
SPECIES	NUMBER	WEIGHT	NUMBER	WEIGHT	NUMBER	WEIGHT	NUMBER	WEIGHT	NUMBER	WEIGHT	NUMBER	WEIGHT	NUMBER	WEIGHT	NUMBER	WEIGHT
SP	C	0.0	0	0.0	0	0.0	0	0.0	0	0.0	0	0.0	0	0.0	0	0.0
AL	C	0.0	0	0.0	0	0.0	0	0.0	1	0.04	0	0.0	0	0.0	0	0.0
SH	0	0.0	0	0.0	0	0.0	0	0.0	1	0.03	0	0.0	0	0.0	0	0.0
YF	C	0.0	0	0.0	0	0.0	0	0.0	17	0.28	0	0.0	0	0.0	0	0.0
TP	C	0.0	0	0.0	0	0.0	0	0.0	4	0.06	0	0.0	0	0.0	0	0.0
WS	C	0.0	0	0.0	0	0.0	0	0.0	0	0.0	0	0.0	0	0.0	0	0.0
LS	0	0.0	0	0.0	0	0.0	0	0.0	0	0.0	0	0.0	0	0.0	0	0.0
LT	C	0.0	0	0.0	0	0.0	0	0.0	3	9.55	0	0.0	0	0.0	0	0.0
MS	0	0.0	0	0.0	0	0.0	0	0.0	1	0.01	0	0.0	0	0.0	0	0.0
SS	C	0.0	0	0.0	0	0.0	0	0.0	0	0.0	0	0.0	0	0.0	0	0.0
GS	0	0.0	0	0.0	0	0.0	0	0.0	0	0.0	0	0.0	0	0.0	0	0.0
XC	C	0.0	0	0.0	0	0.0	0	0.0	0	0.0	0	0.0	0	0.0	0	0.0
BR	0	0.0	0	0.0	0	0.0	0	0.0	1	0.16	0	0.0	0	0.0	0	0.0
LE	C	0.0	0	0.0	0	0.0	0	0.0	0	0.0	0	0.0	0	0.0	0	0.0
MA	0	0.0	0	0.0	0	0.0	0	0.0	0	0.0	0	0.0	0	0.0	0	0.0
TOTALS	0	0.0	0	0.0	0	0.0	0	0.0	28	10.13	0	0.0	0	0.0	0	0.0
PERCENT	0.0	0.0	0.0	0.0	0.0	0.0	0.0	0.0	1.57	14.62	0.0	0.0	0.0	0.0	0.0	0.0

MONTH: OCTOBER, 1979

WEIGHT IN KILOGRAMS

TEMPERATURE IN DEGREES CENTIGRADE

PERCENTAGES ARE OF TOTAL SAMPLED THIS MONTH

	25		26		27		28		29		30		31			
TEMP C	13.6		NO SAMPLING		NO SAMPLING		NO SAMPLING		13.6		NO SAMPLING		NO SAMPLING			
SPECIES	NUMBER	WEIGHT	NUMBER	WEIGHT	NUMBER	WEIGHT	NUMBER	WEIGHT	NUMBER	WEIGHT	NUMBER	WEIGHT	NUMBER	WEIGHT	TOT. NO.	TOT. WT.
SE	115	1.15	0	0.0	0	0.0	0	0.0	1	0.01	0	0.0	0	0.0	913	8.48
AL	11	0.20	0	0.0	0	0.0	0	0.0	1	0.04	0	0.0	0	0.0	300	4.13
SH	1	0.02	0	0.0	0	0.0	0	0.0	0	0.0	0	0.0	0	0.0	62	1.27
YP	43	0.96	0	0.0	0	0.0	0	0.0	0	0.0	0	0.0	0	0.0	136	7.22
TP	56	0.84	0	0.0	0	0.0	0	0.0	2	0.04	0	0.0	0	0.0	324	4.24
RS	0	0.0	0	0.0	0	0.0	0	0.0	0	0.0	0	0.0	0	0.0	2	0.03
LS	1	1.17	0	0.0	0	0.0	0	0.0	0	0.0	0	0.0	0	0.0	3	4.42
LT	3	8.90	0	0.0	0	0.0	0	0.0	1	2.75	0	0.0	0	0.0	10	31.25
MS	1	0.01	0	0.0	0	0.0	0	0.0	0	0.0	0	0.0	0	0.0	5	0.05
SS	0	0.0	0	0.0	0	0.0	0	0.0	0	0.0	0	0.0	0	0.0	4	0.03
GS	0	0.0	0	0.0	0	0.0	0	0.0	0	0.0	0	0.0	0	0.0	13	5.35
XC	2	0.01	0	0.0	0	0.0	0	0.0	0	0.0	0	0.0	0	0.0	6	0.09
BR	1	0.03	0	0.0	0	0.0	0	0.0	0	0.0	0	0.0	0	0.0	4	0.31
LP	1	0.01	0	0.0	0	0.0	0	0.0	0	0.0	0	0.0	0	0.0	1	0.01
MA	0	0.0	0	0.0	0	0.0	0	0.0	0	0.0	0	0.0	0	0.0	1	2.40
TOTALS	235	13.31	0	0.0	0	0.0	0	0.0	5	2.85	0	0.0	0	0.0	1784	69.28
PERCENT	13.17	19.22	0.0	0.0	0.0	0.0	0.0	0.0	0.28	4.11	0.0	0.0	0.0	0.0	100.00	100.00

Docket No. 50-315
50-316

September 22, 1980

ENV/2

SEE ATTACHED LSST

Subject: INDIANA AND MICHIGAN ELECTRIC CO.
D. C. Cook Units 1 and 2

DISTRIBUTION
Docket Files 50-315
50-316

ORB1 Reading

CSParrish
SMiner

The following documents concerning our review of the subject facility
are transmitted for your information:

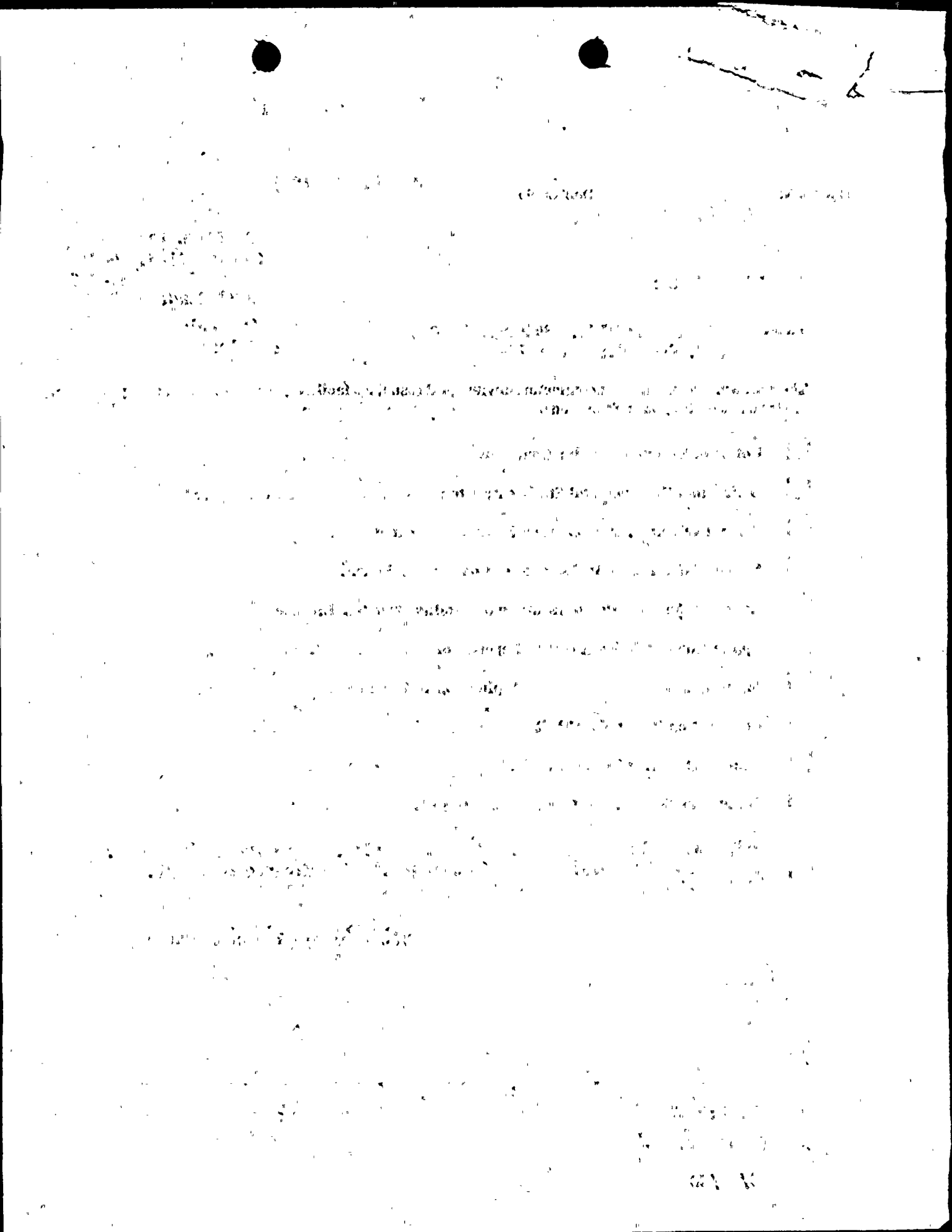
- ☐ Notice of Receipt of Application.
- ☐ Draft/Final Environmental Statement, dated _____.
- ☐ Safety Evaluation, or Supplement No. _____, dated _____.
- ☐ Notice of Hearing on Application for Construction Permit.
- ☐ Notice of Consideration of Issuance of Facility Operating License.
- ☐ Application and Safety Analysis Report, Vol. _____.
- ☐ Amendment No. _____ to Application/SAR, dated _____.
- ☐ Construction Permit No. CPPR-_____, dated _____.
- ☐ Facility Operating License No. DPR-_____, dated _____.
- ☐ Amendment No. _____ to CPPR-_____ or DRR-_____, dated _____.
- ☒ Other: Summaries of impinged fish for April and May 1980. Also info.
to aid in evaluation of ecological significance of event.
- ☒ (8009190422).

Division of Licensing
Office of Nuclear Reactor Regulation

Enclosures:
As stated

cc:

OFFICE	DL:ORB1					
SURNAME	CSParrish, cf					
DATE	9/2/80					



cc: Chief
Division of Ecological Services
Bureau of Sport Fisheries & Wildlife
U. S. Department of the Interior
Washington, D. C. 20240

Director
National Oceanographic Data Center
Environmental Data Service
National Oceanic & Atmospheric Administration
U. S. Department of Commerce
Washington, D. C. 20235

Dr. James T. Tanner
National Bureau of Standards
Reactor Building 235
Washington, D. C. 20234

Director
Technical Assessment Division
Office of Radiation Programs (AW-459)
U. S. Environmental Protection Agency
Crystal Mall #2
Arlington, Virginia 20460

U. S. Environmental Protection Agency
Region II Office
ATTN: EIS COORINDATOR
26 Federal Plaza
New York, New York 10007

Dr. Philip F. Gustafson
Argonne National Laboratory
9700 South Cass Avenue
Argonne, Illinois 60439