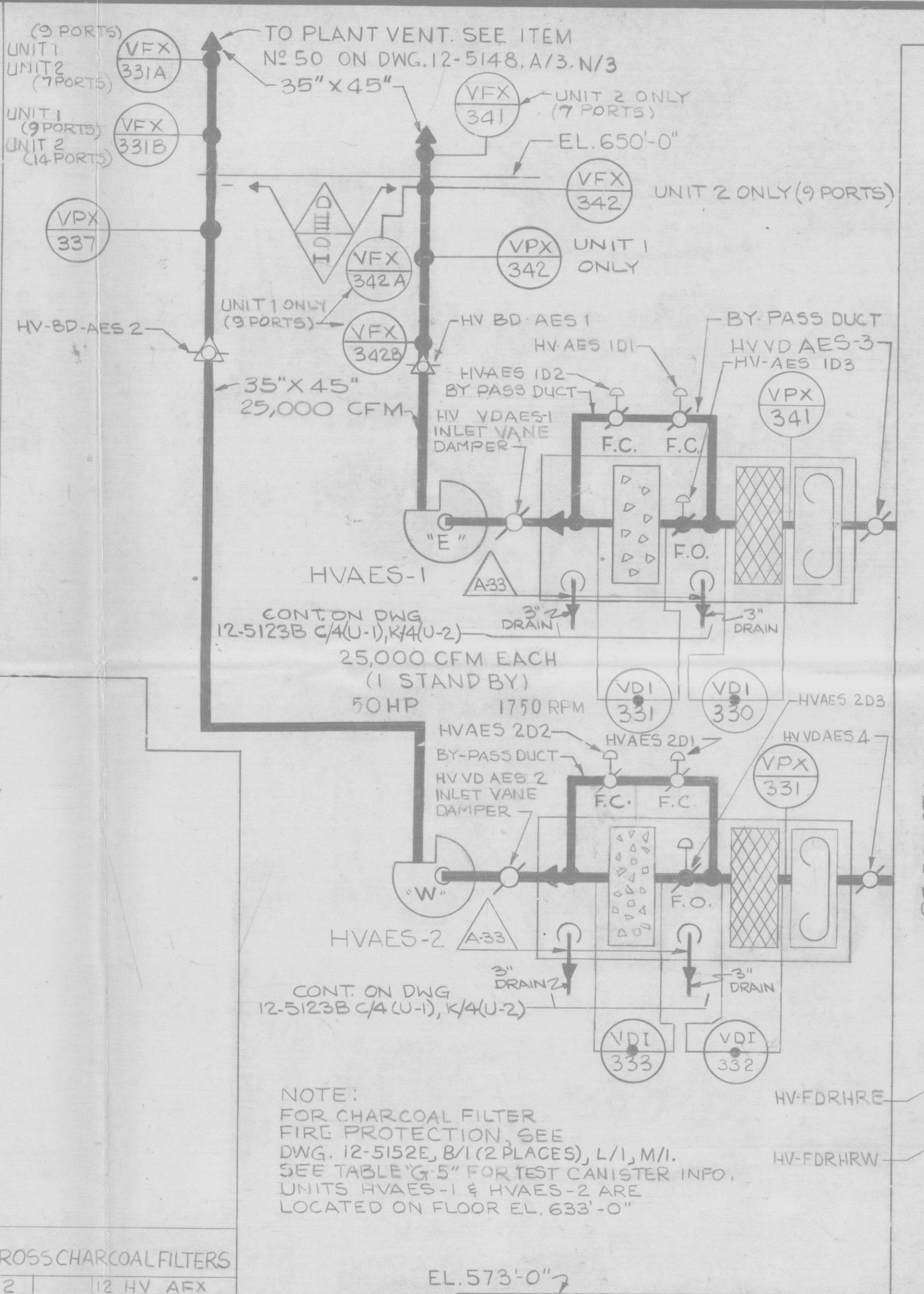


NOTE:  
ALL DUCTWORK TO BE 12" DIA.

SKETCH "D-5"  
AUXILIARY BUILDING GENERAL SUPPLY VENTILATION  
NORTH SIDE

TABLE "G-5"  
IDENTIFICATION OF CHARCOAL TEST CANISTERS ACROSS CHARCOAL FILTERS

| 1 HV AES1    | 1 HV AES2    | 2 HV AES1    | 2 HV AES2    | 12 HV AFX    |
|--------------|--------------|--------------|--------------|--------------|
| 1 HV AES1CT1 | 1 HV AES2CT1 | 2 HV AES1CT1 | 2 HV AES2CT1 | 12 HV AFXCT1 |
| 1 HV AES1CT2 | 1 HV AES2CT2 | 2 HV AES1CT2 | 2 HV AES2CT2 | 12 HV AFXCT2 |
| 1 HV AES1CT3 | 1 HV AES2CT3 | 2 HV AES1CT3 | 2 HV AES2CT3 | 12 HV AFXCT3 |
| 1 HV AES1CT4 | 1 HV AES2CT4 | 2 HV AES1CT4 | 2 HV AES2CT4 | 12 HV AFXCT4 |



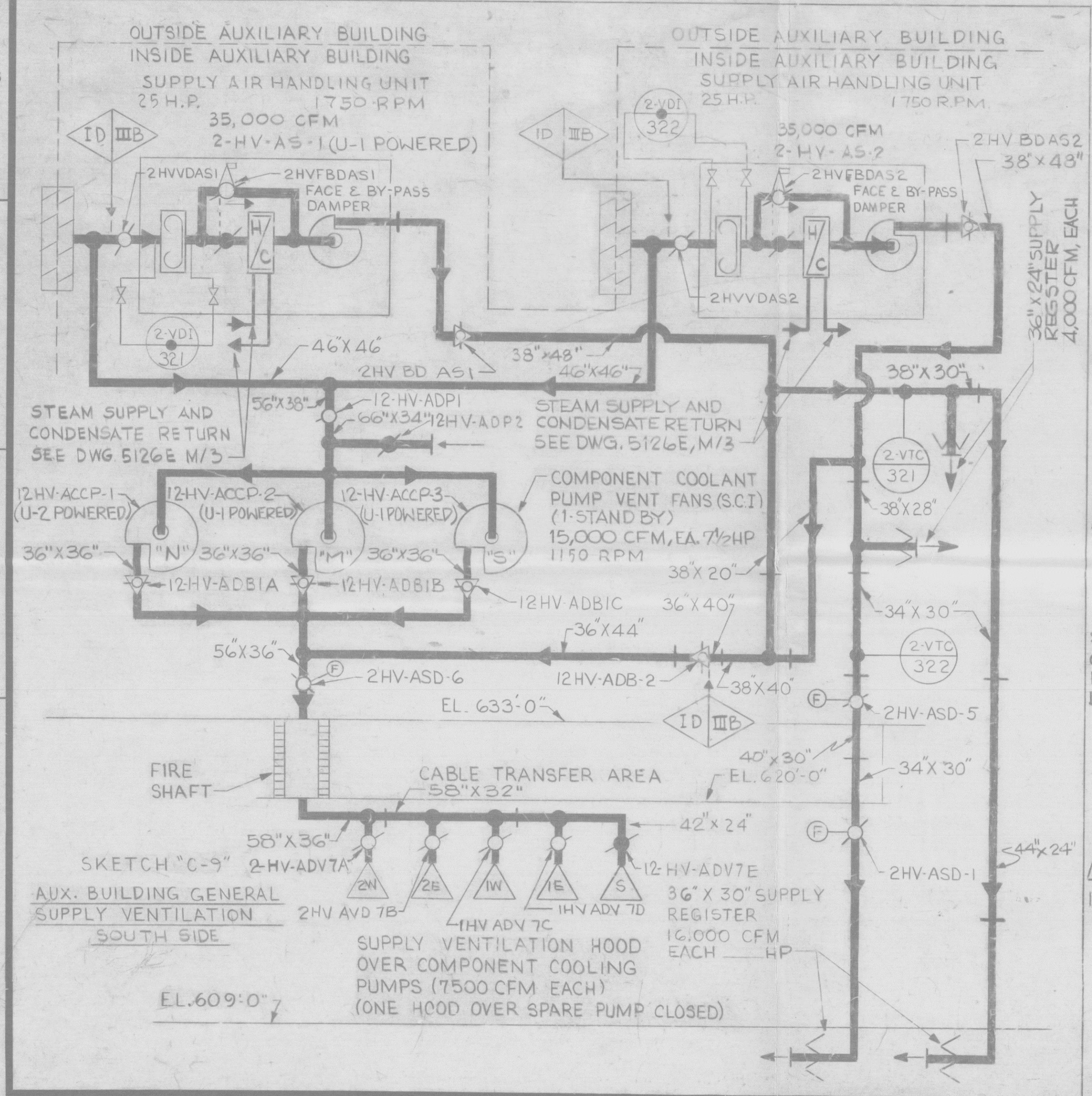
NOTE:  
FOR CHARCOAL FILTER  
FIRE PROTECTION, SEE  
DWG. 12-5152E, B/1 (2 PLACES), L/1, M/1.  
SEE TABLE "G-5" FOR TEST CANISTER INFO.  
UNITS HVAES-1 & HVAES-2 ARE  
LOCATED ON FLOOR EL. 633'-0"

SKETCH "L-5"  
ENGINEERED SAFETY FEATURE VENTILATION SYSTEM  
SEISMIC CLASS I  
(TYPICAL FOR UNIT 1 & 2, EXCEPT AS NOTED)

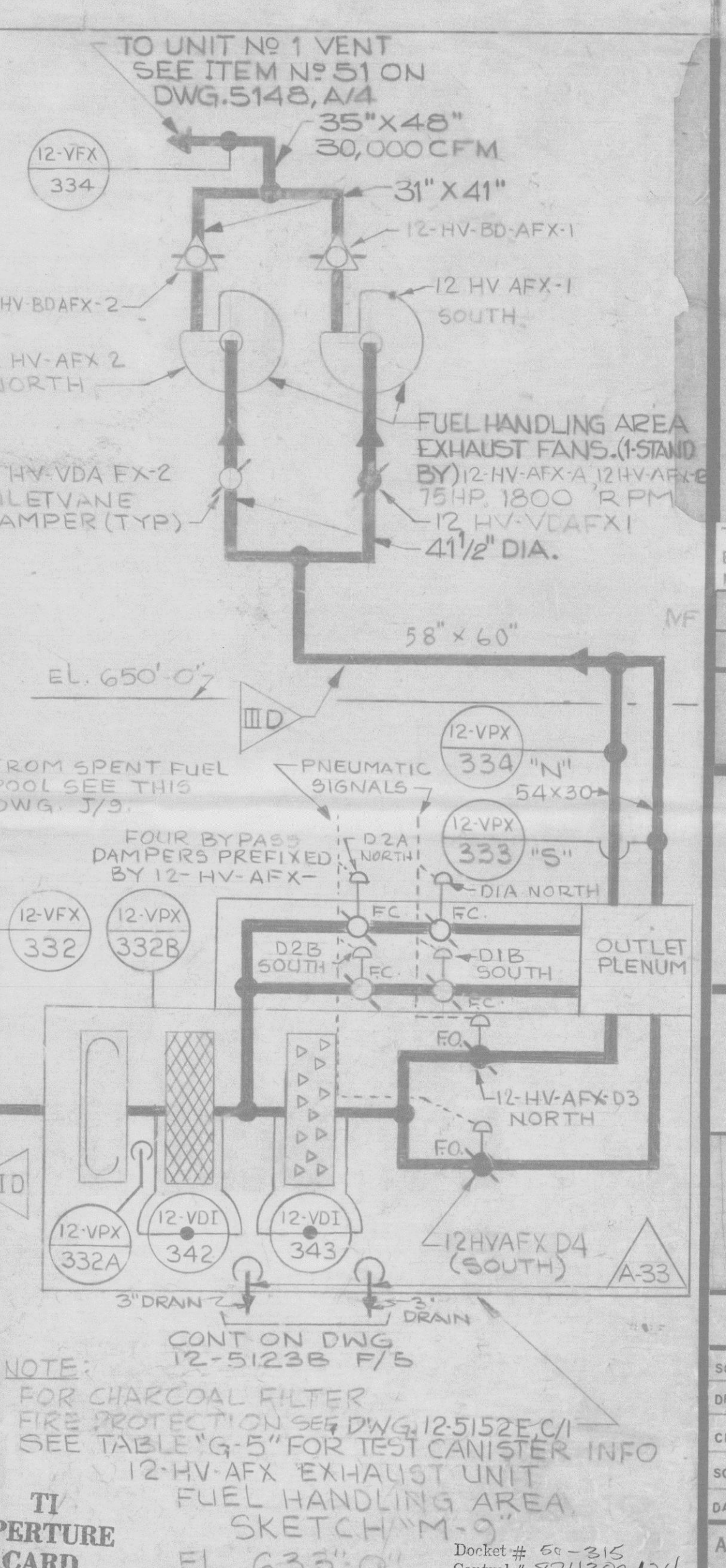
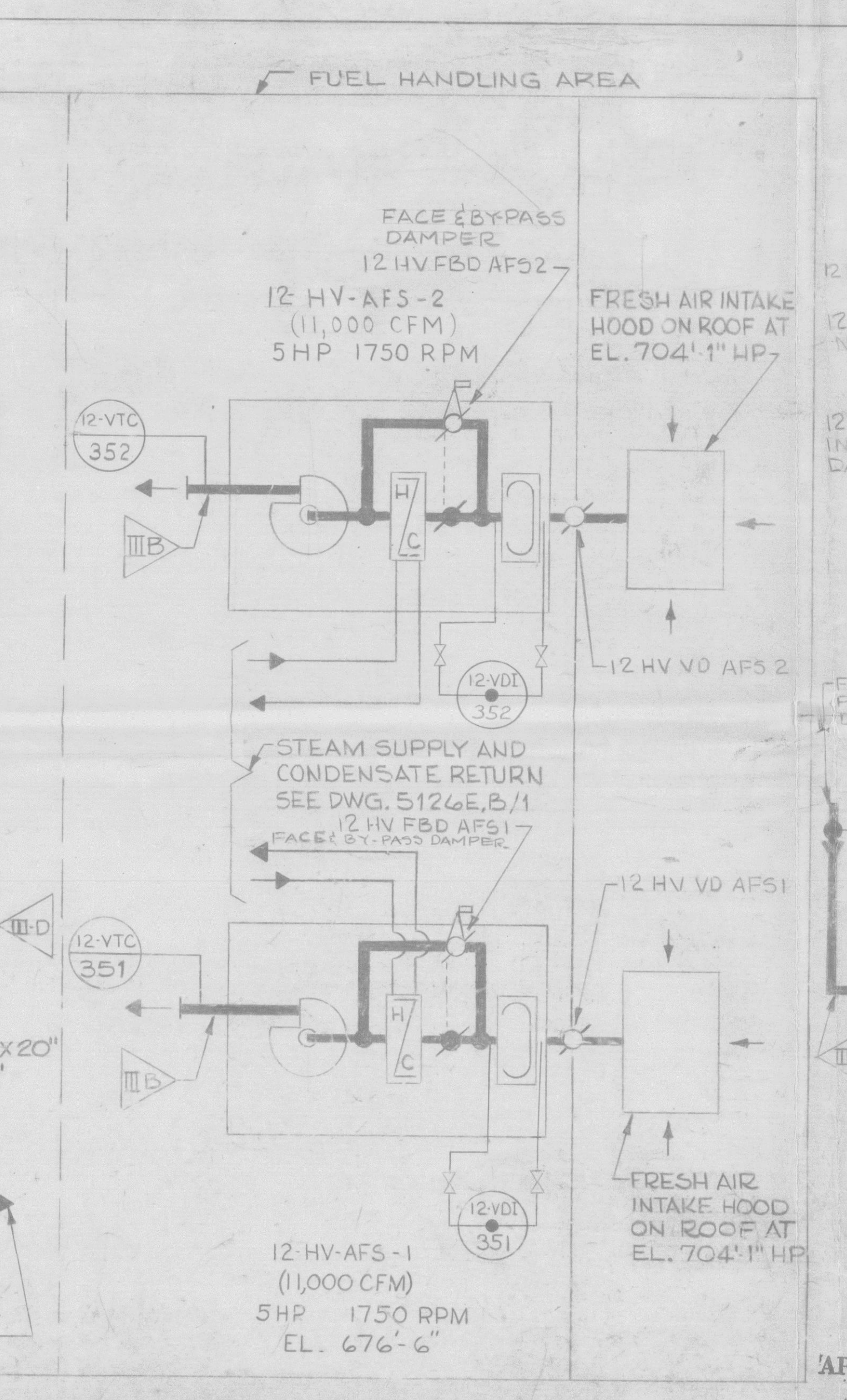
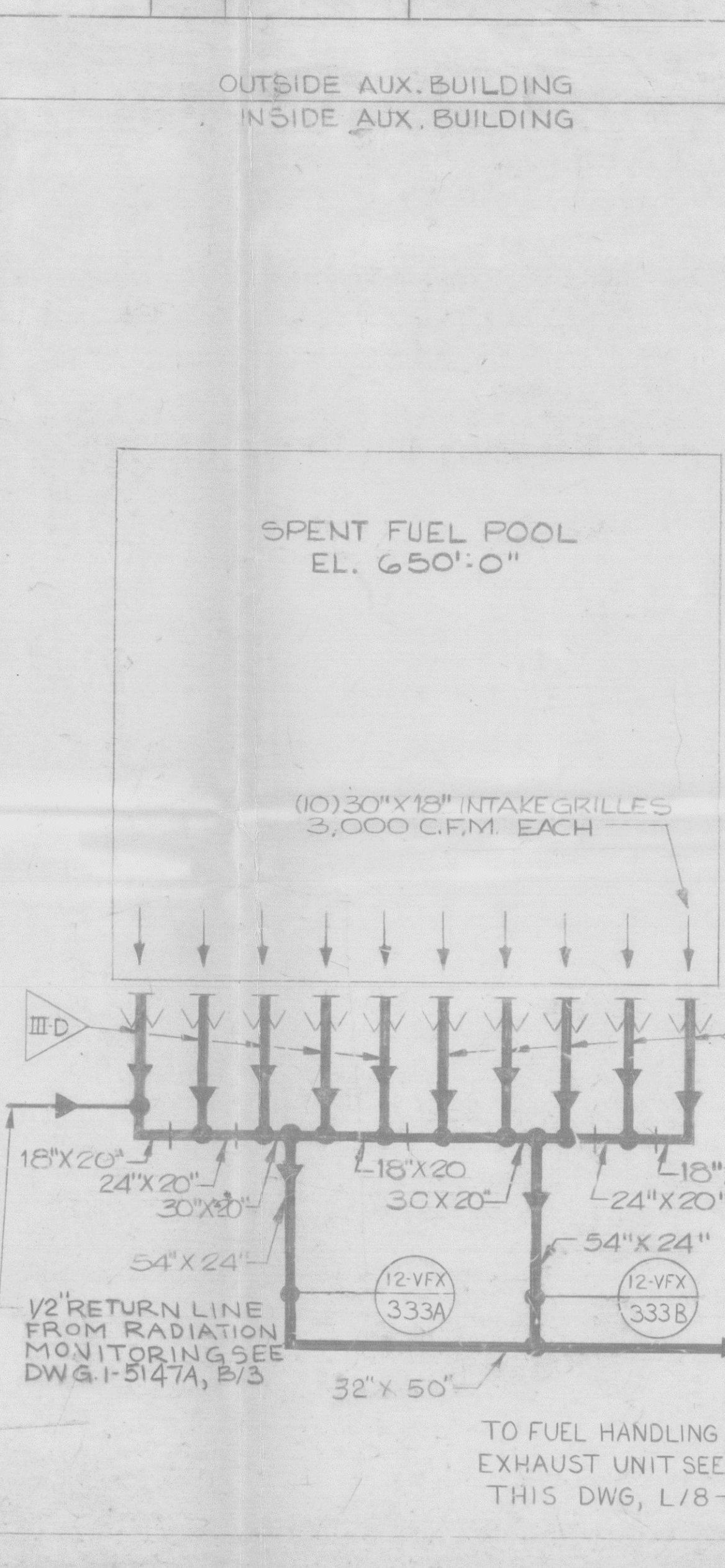
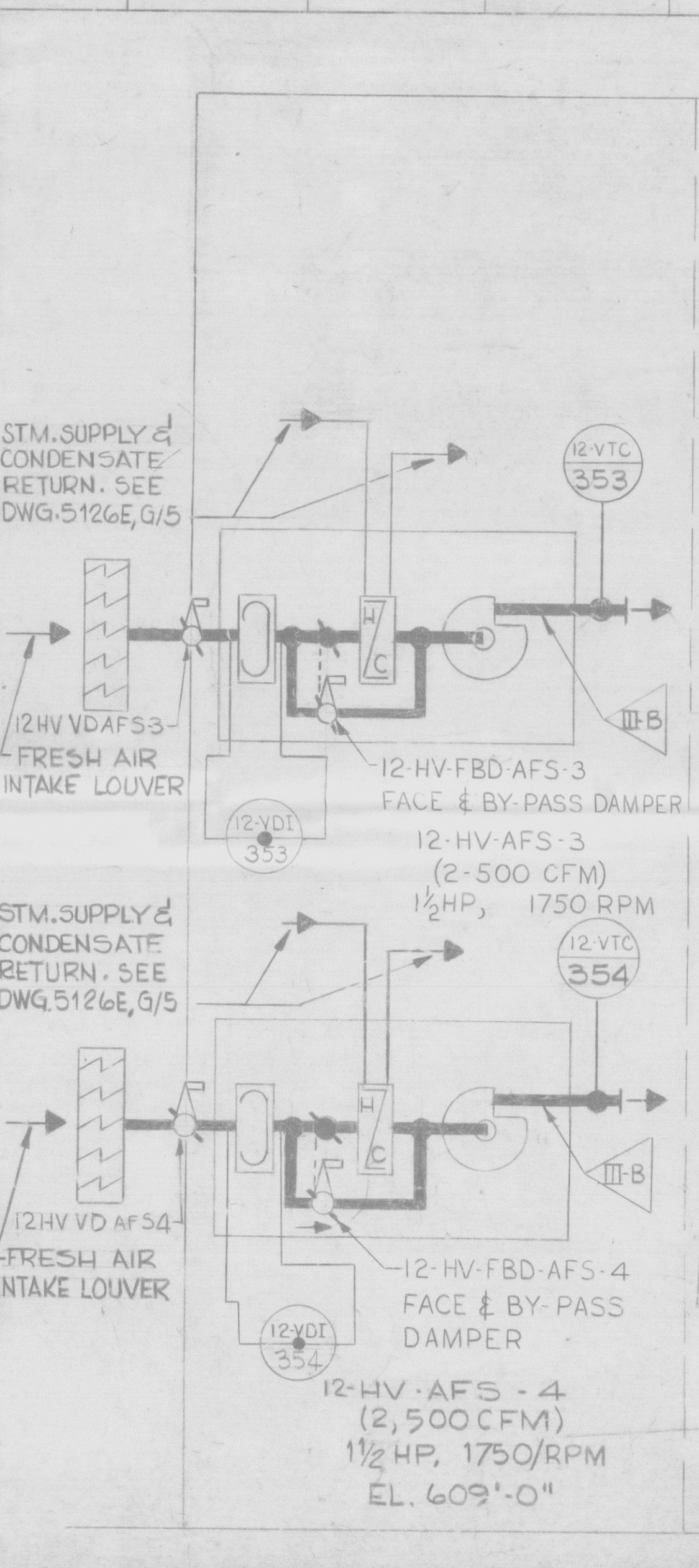
AREA'S WITH SC-1 VENTILATION  
WHICH DO NOT APPEAR ON  
ANY FLOW DIAGRAM

| AREA                                      | DWG. NO. |
|---|----------|
| DIESEL GENERATOR AND<br>SWITCH GEAR ROOMS | 5T24     |
| ESSENTIAL SERVICE<br>WATER PUMP ENCLOSURE | 5682     |
| AUXILIARY FEEDPUMP<br>ENCLOSURE           | 5684     |

- GENERAL NOTES
- LEGEND
- MAIN FLOW
  - AUXILIARY FLOW
  - SYMBOLS
  - AIR OPERATED DAMPER (N.O.)
  - DAMPER (N.C.)
  - EXHAUST OR SUPPLY HOOD
  - DISCONNECT POINT
  - REGISTER WITH OPPOSED BLADE DAMPER
  - CHARCOAL FILTER
  - HEPA FILTER
  - ROUGHING FILTER
  - HEATING COIL
  - COOLING COIL
  - MOTOR OPERATED DAMPER
  - ROLL TYPE PRE-FILTER
  - BACK DRAFT DAMPER
  - FIRE DAMPER
- FOR VALVE, INSTRUMENT SAMPLING, PIPE MATERIAL AND OTHER SYMBOLS NOT EXPLAINED ON THIS DWG AND FOR MARK NUMBER CODES, SEE DWG 12-5103 & 12-5104.



SKETCH "C-9"  
AUX. BUILDING GENERAL  
SUPPLY VENTILATION  
SOUTH SIDE



FOR REFERENCE ONLY  
NOT A CONTROLLED COPY

1. ONLY "UNIQUE VALVE NUMBERS" APPEAR ON THIS DRAWING. SEE SEPARATE VALVE IDENTIFICATION LIST FOR EQUIVALENT DESIGN (MCR) NUMBERS.

2. "TAG" NUMBERS MODIFIED FOR DRAWING USE AS FOLLOWS:  
TAG NO. 2-NSW-VIOS-W APPEARS AS: NSWIOSW

3. INSTRUMENT ROOT VALVE MARK NO'S NOT SHOWN ON DRAWING (SEE VALVE IDENTIFICATION LIST) DERIVED BY ADDING TO INSTRUMENT NUMBER:  
FOR SINGLE IMPULSE: V(I)UPSTR(EAM)  
FOR DOUBLE IMPULSE: V(I)UPSTR(EAM) V2(DOWN TRM)

THE UNIT PREFIX DESIGNATION FOR EACH COMPONENT IDENTIFICATION NO. AS INDICATED EXCEPT FOR SKETCH "L-5".

8-26-87 15

DATE NO. APPROVED

FOR REVISION DESCRIPTION SEE SEPARATE REVISION RECORD FOR THIS DRAWING

"THIS DRAWING IS THE PROPERTY OF THE AMERICAN ELECTRIC POWER SERVICE CORP. AND IS LOANED UPON CONDITION THAT IT IS NOT TO BE REPRODUCED OR COPIED, IN WHOLE OR IN PART, OR USED FOR FURNISHING INFORMATION TO ANY PERSON WITHOUT THE WRITTEN CONSENT OF THE AEP SERVICE CORP. OR FOR ANY PURPOSE, DETRIMENTAL TO THEIR INTEREST, AND IS TO BE RETURNED UPON REQUEST."

INDIANA & MICHIGAN ELECTRIC CO.  
DONALD C. COOK  
NUCLEAR PLANT

BRIDGMAN MICHIGAN

FLOW DIAGRAM  
AUXILIARY BUILDING  
VENTILATION  
UNITS NO. 1 & 2  
SHEET 2 OF 2

DR. NO. 12-5148A-15

SCALE: 1" = 1'-0"

CH. MK.

APPROVED FOR

DATE: 8-26-87

AMERICAN ELECTRIC POWER SERVICE CORP.  
2 BROADWAY  
NEW YORK