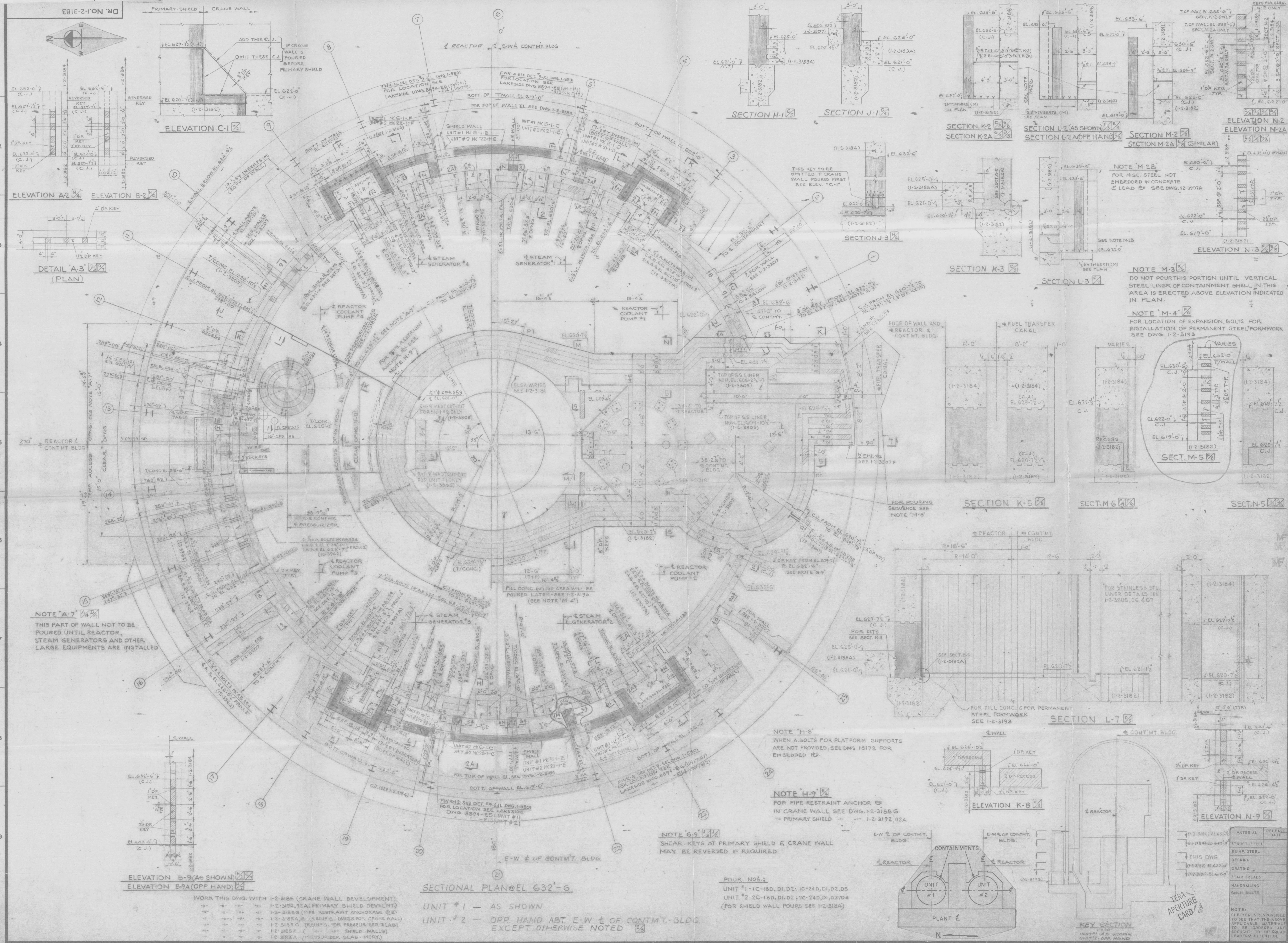


9-35314
10-140874
7-58



GENERAL NOTES

CONCRETE: FC 3500 PSI
ALL ELECTRICAL CONDUITS, PIPING AND EMBEDDED STEEL TO BE IN PLACE BEFORE CONCRETE IS POURED.
ALL ANCHOR BOLTS ARE PREFIXED WITH 12-3072A FOR EMBEDDED STRUT CHANNELS.
#3 12"x14" LENGTH VARIES. SEE DWG. 12-3137, 74, 74A.

MATERIAL

CONCRETE
PRIMARY SHIELD: 275 C.Y.
CRANE WALL (PRESSURIZER SLAB & SHIELD WALLS - EXCLUDED): 265 C.Y.
BY J.A. JONES CONST. CO.
#4 Y INSERTS - BY FIELD

REFERENCE DRAWINGS

12-3185, B.C.A. - SECT. PLAN @ EL. 622'-0"
12-3074, CONT. BLDG. VENT. DUCT & LEAK SHIELDING
12-3163, STAIR. FROM EL. 612'-0" TO EL. 641'-5"
12-3162, CONT. BLDG. PLATFORMS TO INST. ROOM
12-3165, " " " " SUP. FRAME FOR SEALABLE
12-3164, " " " " CRANE WALL MISC. SILLERS
12-3166, " " " " PRESSURIZER PIPING PLAN
12-3167, " " " " RIPPED ARCH. METALS
12-3168, " " " " VENTIL. DUCTS & LEAD SHIELDING
12-3169, " " " " PIPING ARRANG. @ EL. 612'-0"

SARGENT & LUNDY DWGS.

1-5801, 02, 03 - FIELD WITH RESTRAINT ANCHORS
6894, 55, 56 - LAKESIDE MAIN STEAM & TRAC. FEED PIPE RESTRAINTS - UNIT #1
6894, 55, 56 - LAKESIDE MAIN STEAM & TRAC. FEED PIPE RESTRAINTS - UNIT #2
6894, 55, 56 - LAKESIDE MAIN STEAM & TRAC. FEED PIPE RESTRAINTS - UNIT #3
6894, 55, 56 - LAKESIDE MAIN STEAM & TRAC. FEED PIPE RESTRAINTS - UNIT #4
6894, 55, 56 - LAKESIDE MAIN STEAM & TRAC. FEED PIPE RESTRAINTS - UNIT #5
6894, 55, 56 - LAKESIDE MAIN STEAM & TRAC. FEED PIPE RESTRAINTS - UNIT #6
6894, 55, 56 - LAKESIDE MAIN STEAM & TRAC. FEED PIPE RESTRAINTS - UNIT #7
6894, 55, 56 - LAKESIDE MAIN STEAM & TRAC. FEED PIPE RESTRAINTS - UNIT #8
6894, 55, 56 - LAKESIDE MAIN STEAM & TRAC. FEED PIPE RESTRAINTS - UNIT #9
6894, 55, 56 - LAKESIDE MAIN STEAM & TRAC. FEED PIPE RESTRAINTS - UNIT #10

REVISIONS

DATE	NO.	DESCRIPTION	APPROV.
10/1/74	1	REVISED PIPING PLAN	W.P.
10/1/74	2	REVISED PIPING PLAN	W.P.
10/1/74	3	REVISED PIPING PLAN	W.P.
10/1/74	4	REVISED PIPING PLAN	W.P.
10/1/74	5	REVISED PIPING PLAN	W.P.
10/1/74	6	REVISED PIPING PLAN	W.P.
10/1/74	7	REVISED PIPING PLAN	W.P.
10/1/74	8	REVISED PIPING PLAN	W.P.
10/1/74	9	REVISED PIPING PLAN	W.P.
10/1/74	10	REVISED PIPING PLAN	W.P.

INDIANA & MICHIGAN ELECTRIC CO.
DONALD C. COOK
NUCLEAR PLANT
BRIDGMAN, MICHIGAN

UNITS #1 & 2
CONTAINMENT BUILDING
SECTIONAL PLAN EL. 632'-6"
PLAN & SECTIONS MASONRY

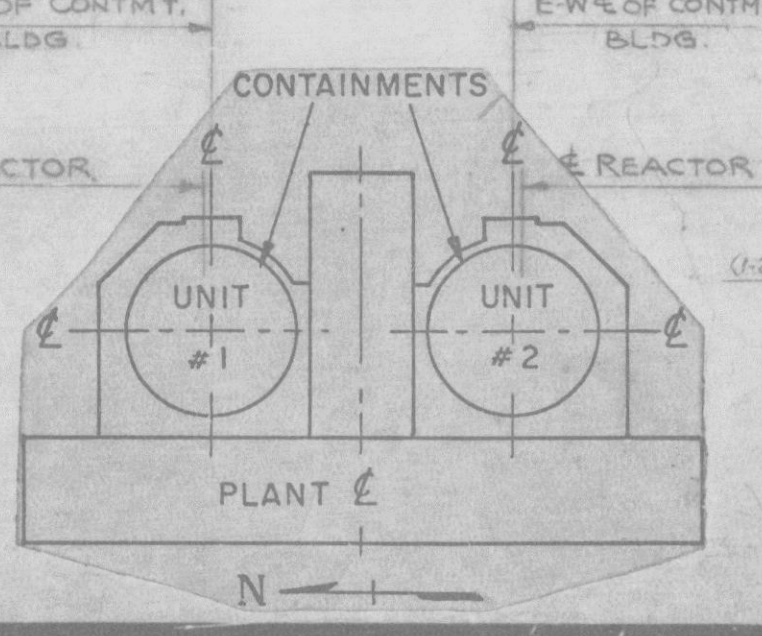
DR. NO. 12-3183-10

ARCH.	ELEC.	MECH.	STR.
W.P.	W.P.	W.P.	W.P.

SCALE: 1/8" = 1'-0"
DATE: 10/1/74
DESIGN DIV.
CHECKER: J.A. JONES
APPROVED: J.A. JONES
AMERICAN ELECTRIC POWER SERVICE CORP.
2 BROADWAY NEW YORK

POUR NOS.

UNIT #1 - 1C-18D, D1, D2; 1C-24D, D1, D2, D3
UNIT #2 - 2C-18D, D1, D2; 2C-24D, D1, D2, D3
(FOR SHIELD WALL POURS SEE 12-3184)



KEY SECTION

UNIT #1 - AS SHOWN
UNIT #2 - OPP. HAND