

REGULATORY INFORMATION DISTRIBUTION SYSTEM (RIDS)

ACCESSION NBR: 8105050586 DOC. DATE: 81/04/29 NOTARIZED: NO DOCKET #
 FACIL: 50-316 Donald C. Cook Nuclear Power Plant, Unit 2, Indiana & 05000316
 AUTH. NAME: AUTHOR AFFILIATION
 RISCHLING, J. L. Indiana & Michigan Electric Co.
 RECIP. NAME: RECIPIENT AFFILIATION
 Region 3, Chicago, Office of the Director

SUBJECT: LER 81-009/03L-0: on 810331, after entering Mode 6 & flooding
 of reactor cavity, routine analysis of RCS indicated chloride
 concentration of 0.26 ppm. Cause is undetermined.
 Contamination was reduced by purification.

DISTRIBUTION CODE: A0029 COPIES RECEIVED: LTR 1 ENCL 1 SIZE: 1/2/1
 TITLE: Incident Reports

NOTES: Send 3 copies of all material to I&E.

05000316

ACTION:	RECIPIENT ID CODE/NAME		COPIES		RECIPIENT ID CODE/NAME		COPIES	
			LTTR	ENCL			LTTR	ENCL
	VARGA, S.	04	3	3				
INTERNAL:	A/D COMP&STRU06		1	1	A/D ENV TECH 07		1	1
	A/D MATL & QU08		1	1	A/D OP REACT009		1	1
	A/D PLANT SYS10		1	1	A/D RAD PROT 11		1	1
	A/D SFTY ASSE12		1	1	ACC EVAL BR 14		1	1
	AEOD		3	3	AEOD/DMU		3	3
	ASLBP/J. HARD		1	1	AUX SYS BR 15		1	1
	CHEM ENG BR 16		1	1	CONT SYS BR 17		1	1
	CORE PERF BR 18		1	1	DIR, ENGINEER120		1	1
	DIR, HUM FAC S21		1	1	DIR, SYS INTEG22		1	1
	EFF TR SYS BR23		1	1	EQUIP QUAL BR25		1	1
	GEOSCIENCES 26		1	1	I&C SYS BR 29		1	1
	I&E 05		1	1	JORDAN, E./IE		1	1
	LIC GUID BR 30		1	1	MATL ENG BR 32		1	1
	MECH ENG BR 33		1	1	NRC PDR 02		1	1
	OR ASSESS BR 35		1	1	POWER SYS BR 36		1	1
	RAD ASSESS BR39		1	1	REACT SYS BR 40		1	1
	<u>REG. FILE</u> 01		1	1	REL & RISK A 41		1	1
	SFTY PROG EVA42		1	1	STRUCT ENG BR44		1	1
EXTERNAL:	ACRS	46	16	16	LPDR	03	1	1
	NSIC	05	1	1				

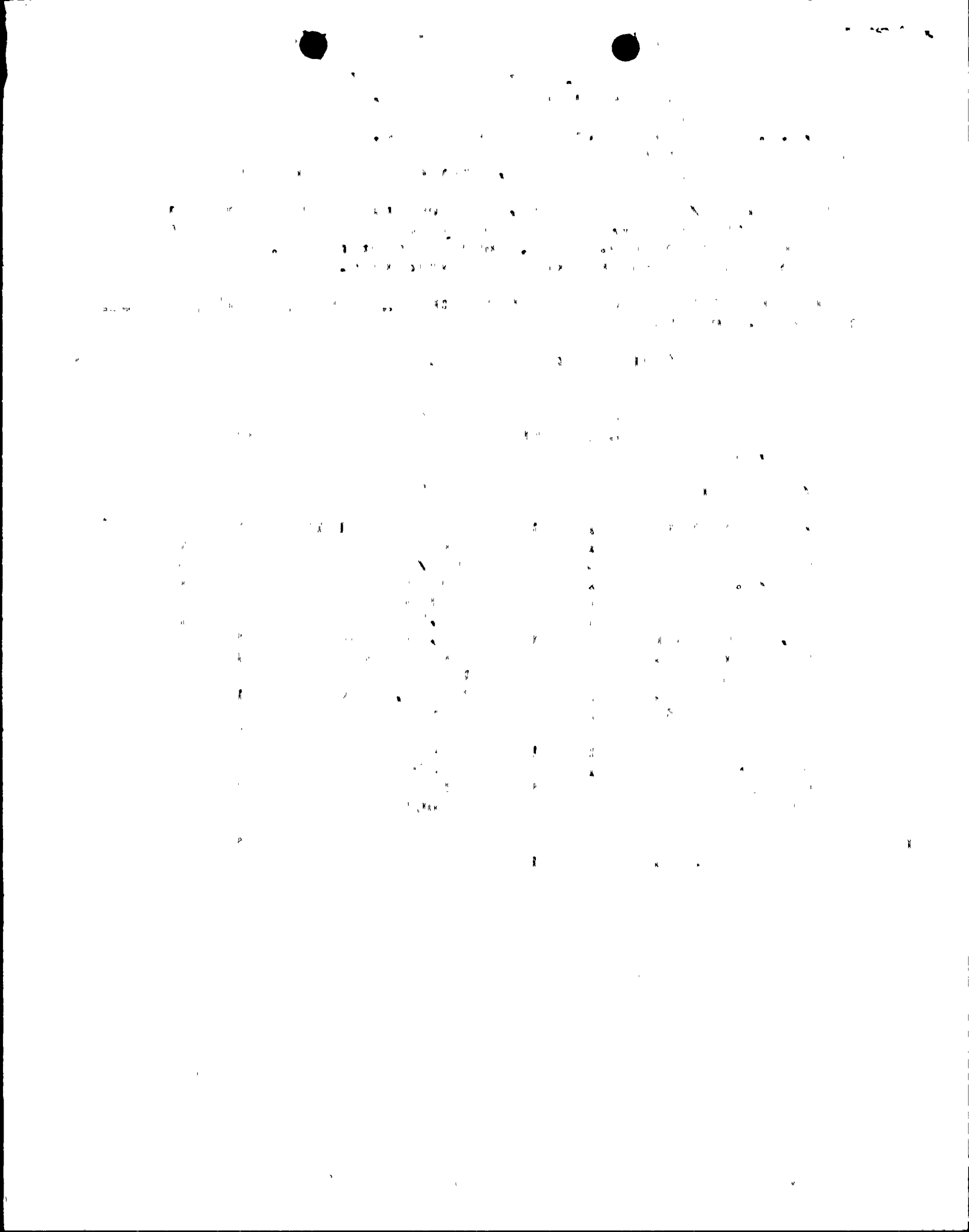
MAY 06 1981

AD/1
4

TOTAL NUMBER OF COPIES REQUIRED: LTTR

ENCL

JF





INDIANA & MICHIGAN ELECTRIC COMPANY

DONALD C. COOK NUCLEAR PLANT
P.O. Box 458, Bridgman, Michigan 49106
(616) 465-5901

April 29, 1981

Mr. J.G. Keppler, Regional Director
Office of Inspection and Enforcement
United States Nuclear Regulatory Commission
Region III
799 Roosevelt Road
Glen Ellyn, IL 60137

Operating License DPR-74
Docket No. 50-316

Dear Mr. Keppler:

Pursuant to the requirements of the Appendix A Technical Specifications,
the following report/s are submitted:

RO 81-009/03L-0.

Sincerely,

for D.V. Shaller
Plant Manager

/bab

cc: J.E. Dolan
R.S. Hunter
R.W. Jurgensen
R.F. Kroeger
R.W. Kilburn
E. Swanson/N. DuBry RO:III
R.C. Callen MPSC
G. Charnoff, Esq.
J.M. Hennigan
W. Lavallee EPRI
PNSRC
J.F. Stietzel
E.L. Townley
Dir., IE (30 copies)
Dir., MIPC (3 copies)

AO/I
4

MAY 4 1981

LICENSEE EVENT REPORT

CONTROL BLOCK: 1 2 3 4 5 6 7 8 9 10 11 12 13 14 15 16 17 18 19 20 21 22 23 24 25 26 27 28 29 30 31 32 33 34 35 36 37 38 39 40 41 42 43 44 45 46 47 48 49 50 51 52 53 54 55 56 57 58 59 60 61 62 63 64 65 66 67 68 69 70 71 72 73 74 75 76 77 78 79 80

(PLEASE PRINT OR TYPE ALL REQUIRED INFORMATION)

0 1 2 3 4 5 6 7 8 9 10 11 12 13 14 15 16 17 18 19 20 21 22 23 24 25 26 27 28 29 30 31 32 33 34 35 36 37 38 39 40 41 42 43 44 45 46 47 48 49 50 51 52 53 54 55 56 57 58 59 60 61 62 63 64 65 66 67 68 69 70 71 72 73 74 75 76 77 78 79 80

CON'T

REPORT
SOURCE

0 1 2 3 4 5 6 7 8 9 10 11 12 13 14 15 16 17 18 19 20 21 22 23 24 25 26 27 28 29 30 31 32 33 34 35 36 37 38 39 40 41 42 43 44 45 46 47 48 49 50 51 52 53 54 55 56 57 58 59 60 61 62 63 64 65 66 67 68 69 70 71 72 73 74 75 76 77 78 79 80

EVENT DESCRIPTION AND PROBABLE CONSEQUENCES (10)

0 2 AFTER ENTERING MODE 6 AND FLOODUP OF THE REACTOR CAVITY, ROUTINE ANALYSIS OF THE

0 3 REACTOR COOLANT SYSTEM INDICATED A CHLORIDE CONCENTRATION OF .26 PPM. THIS IS IN

0 4 EXCESS OF THE STEADY STATE LIMIT SPECIFIED IN TECHNICAL SPECIFICATION TABLE 3.4-1.

0 5 FLOW THROUGH THE MIXED BED DEMINERALIZER WAS KEPT AT ITS MAXIMUM AND THE CHLORIDE CON-

0 6 CENTRATION WAS REDUCED TO .08 PPM IN 16 HOURS. PREVIOUS OCCURRENCES OF A SIMILAR

0 7 NATURE INCLUDE: 050-315/78-35.

0 8 9 10 11 12 13 14 15 16 17 18 19 20 21 22 23 24 25 26 27 28 29 30 31 32 33 34 35 36 37 38 39 40 41 42 43 44 45 46 47 48 49 50 51 52 53 54 55 56 57 58 59 60 61 62 63 64 65 66 67 68 69 70 71 72 73 74 75 76 77 78 79 80

SYSTEM
CODECAUSE
CODECAUSE
SUBCODE

COMPONENT CODE

COMP.
SUBCODEVALVE
SUBCODE

0 9 10 11 12 13 14 15 16 17 18 19 20 21 22 23 24 25 26 27 28 29 30 31 32 33 34 35 36 37 38 39 40 41 42 43 44 45 46 47 48 49 50 51 52 53 54 55 56 57 58 59 60 61 62 63 64 65 66 67 68 69 70 71 72 73 74 75 76 77 78 79 80

(17) LER/RO
REPORT
NUMBEREVENT YEAR
8 1SEQUENTIAL
REPORT NO.
0 0 9OCCURRENCE
CODE
0 3REPORT
TYPE
LREVISION
NO.
0ACTION
TAKEN
XFUTURE
ACTION
XEFFECT
ON PLANT
ZSHUTDOWN
METHOD
ZHOURS
0 0 0 0 0ATTACHMENT
SUBMITTED
NNPRD-4
FORM SUB.
NPRIME COMP.
SUPPLIER
ZCOMPONENT
MANUFACTURER
Z 9 9 9

CAUSE DESCRIPTION AND CORRECTIVE ACTIONS (27)

1 0 THE EXACT CAUSE OF THE CONTAMINATION IS UNKNOWN BUT IT WAS QUICKLY REDUCED WITH NO

1 1 ACTIONS OTHER THAN CVCS PURIFICATION INDICATING A SINGLE RELEASE RATHER THAN A CON-

1 2 TINUING SOURCE. FUTURE PLANS INCLUDE MONITORING THE UNIT 1 REACTOR CAVITY FLOODUP

1 3 CAREFULLY TO SEE IF THIS IS A GENERIC PROBLEM OR AN ISOLATED INCIDENT.

1 4 5 6 7 8 9 10 11 12 13 14 15 16 17 18 19 20 21 22 23 24 25 26 27 28 29 30 31 32 33 34 35 36 37 38 39 40 41 42 43 44 45 46 47 48 49 50 51 52 53 54 55 56 57 58 59 60 61 62 63 64 65 66 67 68 69 70 71 72 73 74 75 76 77 78 79 80

FACILITY
STATUS

% POWER

OTHER STATUS

METHOD OF
DISCOVERY

DISCOVERY DESCRIPTION

1 5 6 7 8 9 10 11 12 13 14 15 16 17 18 19 20 21 22 23 24 25 26 27 28 29 30 31 32 33 34 35 36 37 38 39 40 41 42 43 44 45 46 47 48 49 50 51 52 53 54 55 56 57 58 59 60 61 62 63 64 65 66 67 68 69 70 71 72 73 74 75 76 77 78 79 80

ACTIVITY
RELEASEDCONTENT
RELEASED

AMOUNT OF ACTIVITY

LOCATION OF RELEASE

1 6 7 8 9 10 11 12 13 14 15 16 17 18 19 20 21 22 23 24 25 26 27 28 29 30 31 32 33 34 35 36 37 38 39 40 41 42 43 44 45 46 47 48 49 50 51 52 53 54 55 56 57 58 59 60 61 62 63 64 65 66 67 68 69 70 71 72 73 74 75 76 77 78 79 80

PERSONNEL EXPOSURES
NUMBER

TYPE

DESCRIPTION

1 7 8 9 10 11 12 13 14 15 16 17 18 19 20 21 22 23 24 25 26 27 28 29 30 31 32 33 34 35 36 37 38 39 40 41 42 43 44 45 46 47 48 49 50 51 52 53 54 55 56 57 58 59 60 61 62 63 64 65 66 67 68 69 70 71 72 73 74 75 76 77 78 79 80

PERSONNEL INJURIES
NUMBER

DESCRIPTION

1 8 9 10 11 12 13 14 15 16 17 18 19 20 21 22 23 24 25 26 27 28 29 30 31 32 33 34 35 36 37 38 39 40 41 42 43 44 45 46 47 48 49 50 51 52 53 54 55 56 57 58 59 60 61 62 63 64 65 66 67 68 69 70 71 72 73 74 75 76 77 78 79 80

LOSS OF OR DAMAGE TO FACILITY
TYPE

DESCRIPTION

1 9 10 11 12 13 14 15 16 17 18 19 20 21 22 23 24 25 26 27 28 29 30 31 32 33 34 35 36 37 38 39 40 41 42 43 44 45 46 47 48 49 50 51 52 53 54 55 56 57 58 59 60 61 62 63 64 65 66 67 68 69 70 71 72 73 74 75 76 77 78 79 80

PUBLCITY
ISSUED

DESCRIPTION

2 0 1 2 3 4 5 6 7 8 9 10 11 12 13 14 15 16 17 18 19 20 21 22 23 24 25 26 27 28 29 30 31 32 33 34 35 36 37 38 39 40 41 42 43 44 45 46 47 48 49 50 51 52 53 54 55 56 57 58 59 60 61 62 63 64 65 66 67 68 69 70 71 72 73 74 75 76 77 78 79 80

NAME OF PREPARER JACK L. RISCHLING

PHONE: 616-465-5901

